

# Houston Pilots Forecast Package

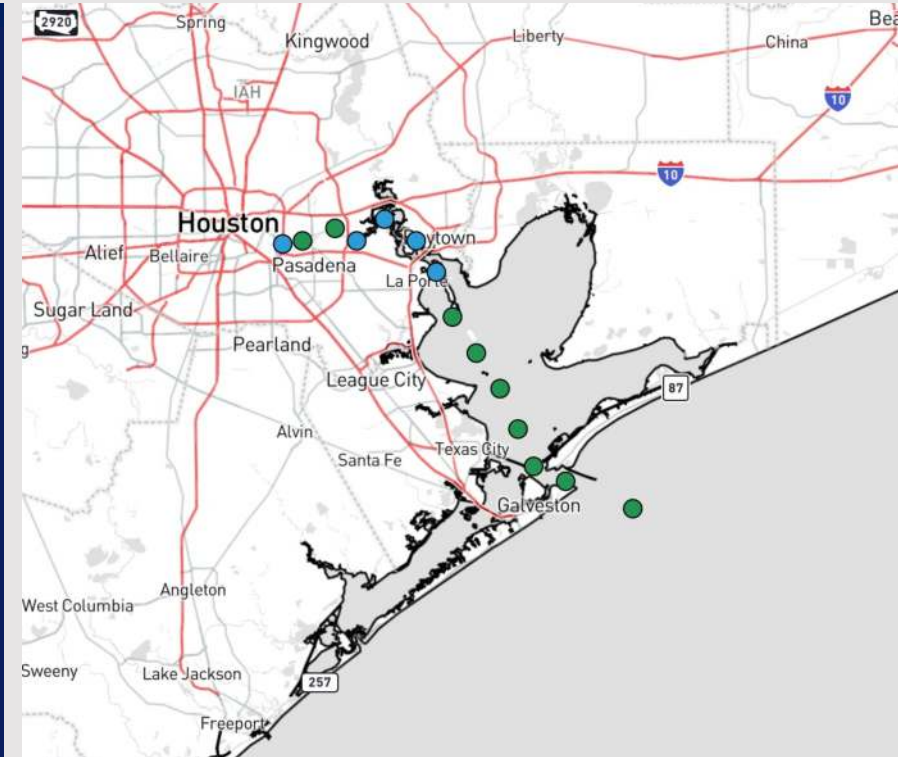


Updated: 11:00 PM CT

Saturday, May 18, 2024

Forecaster: Tyler Riggles

- Favoring a dry weekend/start to the beginning of next week
- **Low end threat for patchy fog continues N of Morgan's Point this AM. More details on timing on slides below**
- Winds will continue to be calmer today with next risk of slightly elevated gusts being MON PM



**Current Radar: 10:55 PM CT**



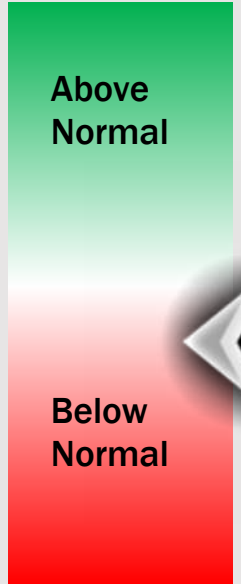
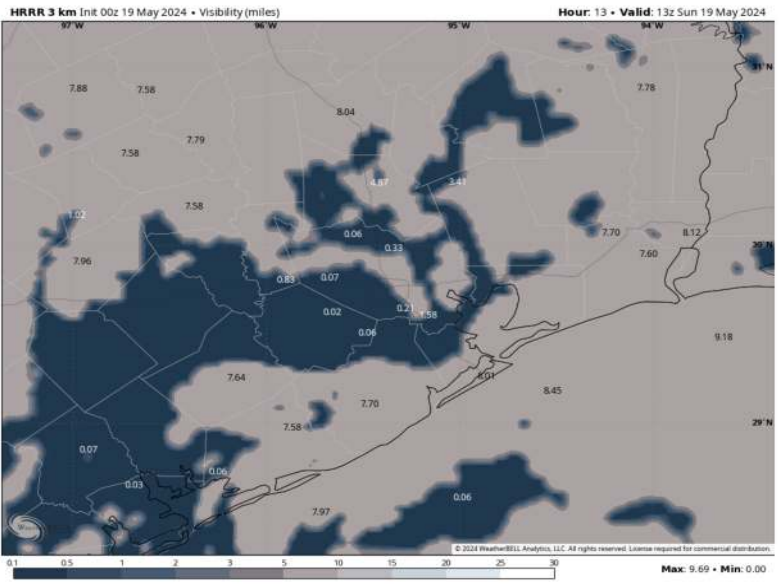
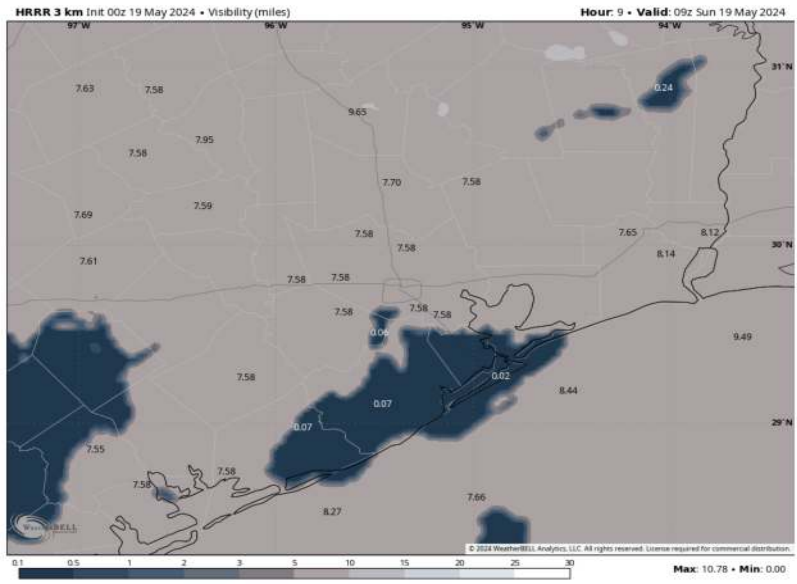
As always, please do not hesitate to reach out to us with any forecast questions via the chat option on Clarity or our on-call number, **(317)-560-8122** press 1 for forecast questions.

# Houston Pilots Visibility Report



## 4 AM CT SUN VISIBILITY      8 AM CT SUN VISIBILITY

## Confidence



TIMEFRAME DISCUSSED	THREAT
3 – 9 AM CT SUN	LOW

- Anticipating development of mist to begin near the Boarding Station at 3 AM and reach Morgan’s Point by 5 AM, likely as patchy fog for Stations N.
- The overall threat remains low, however there is some data indicating a risk for visibility dropping to 0.5 – 2 miles in a patchy fashion N of Morgan’s Point.
- Not favoring reduced visibilities of less than 2 miles for stations S of Morgan’s Point, as conditions will likely be more “misty”.
- Expecting 9 AM to be the latest this risk extends.

# Houston Pilots Visibility Chart (miles)



Time Knots	Sat 11pm	Sun 12am	Sun 1am	Sun 2am	Sun 3am	Sun 4am	Sun 5am	Sun 6am	Sun 7am	Sun 8am	Sun 9am	Sun 10am	Sun 11am	Sun 12pm	Sun 1pm	Sun 2pm	Sun 3pm	Sun 4pm	Sun 5pm	Sun 6pm	Sun 7pm	Sun 8pm	Sun 9pm	Sun 10pm
610 Bridge	3	3	2	2	1	1	1	1	1	2	2	3	3	4	5	5	6	7	7	7	7	6	5	5
	6	6	5	5	4	4	4	4	4	4	5	5	7	8	10	11	12	13	13	13	13	12	11	10
	S	S	S	SSE	SSE	SE	SE	SE	ESE	ESE	ESE	ESE	ESE	ESE	ESE	ESE	ESE	ESE	ESE	SE	SE	SE	SSE	SSE
Kinder 1	3	2	2	2	1	1	1	1	1	1	2	3	3	4	5	5	6	7	7	7	7	6	5	5
	6	6	5	4	4	4	4	4	4	4	5	5	7	8	10	11	12	13	12	13	12	12	11	10
	S	S	S	SSE	SE	SE	ESE	ESE	ESE	ESE	ESE	ESE	ESE	ESE	ESE	ESE	ESE	ESE	ESE	SE	SE	SE	SSE	SSE
Greens Bayou	3	2	2	1	1	1	1	1	1	1	2	2	3	4	5	5	6	7	7	7	7	6	5	5
	6	5	5	4	4	4	3	4	4	4	5	5	6	8	10	11	12	12	12	13	12	12	10	9
	S	S	S	S	SSE	SE	ESE	ESE	ESE	E	E	ESE	ESE	ESE	ESE	ESE	ESE	ESE	SE	SE	SE	SE	SSE	SSE
Shell Crude	3	2	2	1	1	1	1	1	1	1	2	2	3	4	5	5	6	6	7	7	7	6	5	5
	6	5	5	4	4	4	4	4	4	4	5	5	6	8	10	11	11	12	12	13	12	12	10	9
	S	S	S	S	SSE	SE	ESE	ESE	E	E	E	ESE	ESE	ESE	ESE	ESE	ESE	ESE	SE	SE	SE	SE	SSE	SSE
Lynchburg Ferries	3	2	2	1	1	1	1	1	1	1	2	3	4	5	5	6	6	7	7	7	6	5	5	4
	6	5	5	4	3	3	3	3	4	4	5	6	8	9	11	12	12	12	13	12	13	11	10	9
	S	S	S	S	SSE	SE	ESE	ESE	E	E	ESE	ESE	ESE	SE	SE	SE	SE	SE	SE	SE	SE	SSE	SSE	SSE
Exxon 3	4	4	3	3	3	3	2	3	3	3	3	3	4	5	5	6	7	7	8	8	9	8	7	7
	7	6	6	5	5	5	4	5	5	5	6	7	9	10	11	12	13	13	14	13	13	13	12	10
	SSE	SSE	S	SSE	SE	SE	SE	ESE	ESE	ESE	ESE	ESE	ESE	SE	SE	SE	SE	SE	SE	SE	SSE	SSE	SSE	SSE
Morgans Point	5	4	3	3	3	3	3	3	3	3	3	3	4	5	5	6	7	7	8	8	9	8	7	7
	7	6	6	5	5	5	5	5	6	6	6	7	9	10	11	12	13	13	13	13	13	12	11	10
	S	SSE	S	SSE	SSE	SSE	SE	ESE	ESE	ESE	ESE	ESE	ESE	SE	SE	SE	SE	SE	SE	SE	SE	SSE	SSE	SSE
75/76	5	5	4	3	3	3	3	3	3	3	3	4	4	5	5	6	7	8	8	9	9	9	8	7
	7	6	6	6	5	5	5	5	6	6	6	7	7	9	10	11	13	13	13	14	13	13	12	11
	SSE	SSE	SSE	SSE	SSE	SE	SE	SE	ESE	ESE	ESE	ESE	ESE	ESE	ESE	SE	SE	SE	SE	SE	SE	SSE	SSE	SSE
63/64	5	5	4	3	3	3	3	3	3	3	4	4	5	5	5	6	7	7	8	8	9	8	8	7
	8	6	6	6	5	5	5	5	6	6	6	7	7	9	10	11	12	13	13	13	13	13	12	11
	SSE	SSE	SSE	SSE	SSE	SE	SE	SE	ESE	ESE	ESE	ESE	ESE	ESE	ESE	ESE	SE	SE	SE	SE	SE	SE	SSE	SSE
51/52	5	5	4	3	3	3	3	3	4	4	4	5	5	5	5	6	7	7	7	8	8	8	7	7
	8	6	6	6	6	5	5	6	6	6	7	7	8	9	10	11	12	13	12	12	12	12	12	11
	SSE	SSE	SSE	SSE	SSE	SSE	SE	SE	ESE	ESE	ESE	ESE	ESE	ESE	ESE	ESE	SE	SE	SE	SE	SE	SE	SE	SSE
37/38	5	5	4	3	3	3	3	3	4	4	4	5	5	5	5	6	7	7	7	7	8	7	7	7
	8	7	6	6	6	6	6	6	6	7	7	7	8	9	10	11	12	12	12	12	12	12	11	11
	SSE	SSE	SSE	SSE	SSE	SE	SE	ESE	ESE	ESE	ESE	ESE	ESE	ESE	ESE	ESE	SE	SE	SE	SE	SE	SE	SSE	SSE
25/26	5	5	4	3	3	3	3	3	4	4	4	5	5	5	6	6	7	7	7	7	8	7	7	7
	8	7	6	6	6	6	6	6	6	7	7	8	8	9	10	11	11	12	11	12	11	12	11	11
	SSE	SSE	SSE	SSE	SSE	SE	SE	ESE	ESE	ESE	ESE	ESE	ESE	ESE	ESE	ESE	ESE	ESE	SE	SE	SE	SE	SE	SSE
11/12	5	4	4	3	3	3	3	3	4	4	4	5	5	6	7	7	7	7	7	7	7	7	7	7
	8	7	6	6	6	6	6	6	6	7	8	8	8	9	10	11	11	11	11	11	11	11	11	11
	SSE	SSE	SSE	SSE	SE	SE	SE	ESE	ESE	ESE	ESE	ESE	ESE	ESE	ESE	ESE	ESE	ESE	SE	SE	SE	SE	SE	SSE
1 & 2 Bravo	6	5	5	5	4	4	4	5	5	5	5	5	6	6	6	6	7	7	7	7	7	7	8	8
	9	8	7	6	6	6	6	7	7	8	8	9	9	9	9	10	10	11	11	11	11	12	12	12
	SE	SSE	SSE	SSE	SE	SE	ESE	ESE	ESE	ESE	E	E	E	E	E	E	ESE	ESE	ESE	ESE	SE	SE	SE	SSE

**NOTE: This is automated data that may/may not agree with the official BAM thinking that's found on the daily slides or special visibility report slides. This data should be used as a guide only**

# Houston Pilots Wind Chart



## Forecast Confidence



## Example

Sustained wind 13 Knots  
Gusts 18 Knots  
Wind from the N

WS: 13  
G:18  
N

Time	Sat 11pm	Sun 12am	Sun 1am	Sun 2am	Sun 3am	Sun 4am	Sun 5am	Sun 6am	Sun 7am	Sun 8am	Sun 9am	Sun 10am	Sun 11am	Sun 12pm	Sun 1pm	Sun 2pm	Sun 3pm	Sun 4pm	Sun 5pm	Sun 6pm	Sun 7pm	Sun 8pm	Sun 9pm	Sun 10pm
610 Bridge	10	10	9	6	5	6	6	2	2	1	8	10	10	10	10	10	10	10	10	10	10	10	10	10
Kinder 1	10	10	9	6	5	6	6	2	1	1	8	10	10	10	10	10	10	10	10	10	10	10	10	10
Greens Bayou	10	10	9	6	6	6	5	2	0.5	1	8	10	10	10	10	10	10	10	10	10	10	10	10	10
Shell Crude	10	10	10	6	6	6	5	2	0.5	1	8	10	10	10	10	10	10	10	10	10	10	10	10	10
Lynchburg Ferries	10	10	9	6	6	6	4	2	0.5	3	10	10	10	10	10	10	10	10	10	10	10	10	10	10
Exxon 3	10	10	10	6	6	6	2	2	2	6	10	10	10	10	10	10	10	10	10	10	10	10	10	10
Morgans Point	10	10	10	6	6	6	2	6	5	6	10	10	10	10	10	10	10	10	10	10	10	10	10	10
75/76	10	10	9	6	6	6	4	6	5	6	10	10	10	10	10	10	10	10	10	10	10	10	9	9
63/64	10	10	9	6	6	6	9	6	5	6	10	10	10	10	10	10	10	10	10	10	10	10	9	9
51/52	10	10	9	6	6	6	9	6	3	6	10	10	10	10	10	10	10	10	10	10	10	10	9	9
37/38	10	10	9	6	4	6	9	6	3	6	10	10	10	10	10	10	10	10	10	10	10	10	9	10
25/26	10	10	9	6	6	6	8	6	5	6	9	10	10	10	10	10	10	10	10	10	10	10	10	10
11/12	10	10	9	2	6	6	8	6	5	6	9	10	10	10	10	10	10	10	10	10	10	10	10	10
1 & 2 Bravo	10	7	7	6	6	6	8	6	4	5	6	7	7	7	9	9	6	6	6	6	6	6	10	10

**NOTE: This is automated data that may/may not agree with the official BAM thinking that's found on the daily slides. This data should be used as a guide only**

# Houston Pilots: Sun. 5/19/2024



## Forecast Discussion

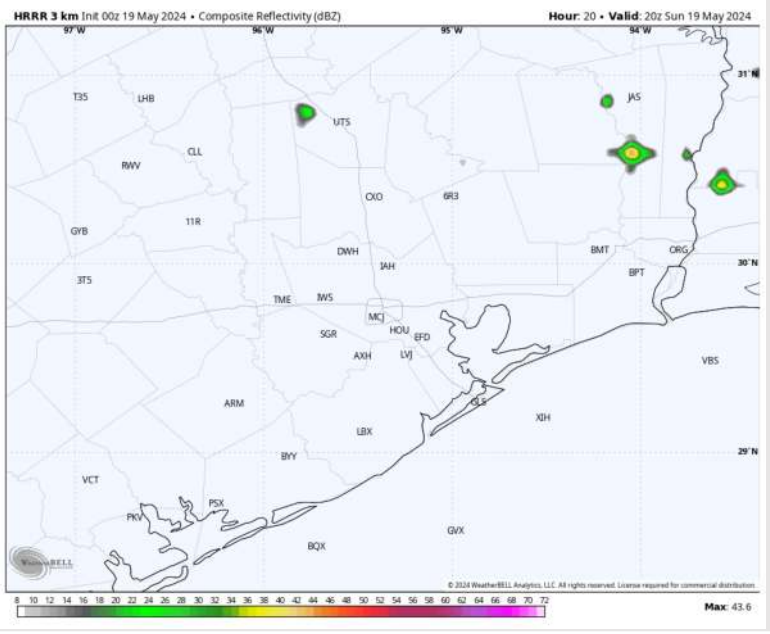
**Precip:** Favoring dry conditions for most of the day. Very Isolated Pop-Up (10%) chance from 3PM – 7PM.

**Wind:** Winds will be out of S/SE throughout the day. **N of Morgan's Point:** Winds at 4 – 9 kts all day. **S of Morgan's Point:** Winds at 5-10 kts expected for the whole day outside of 12 PM – 4 PM when winds slightly weaken 3 – 6 kts.

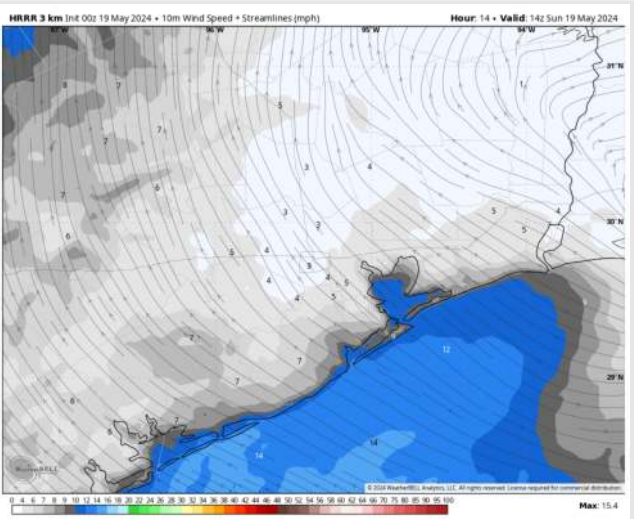
**High Temps:** **N of Morgan's Point:** Near 90 F **S of Morgan's Point:** Low to mid 80s F.

**Visibility:** Watching the potential for a window of patchy fog N of Morgan's point between 4 – 10 AM this morning. Confidence is low at this time.

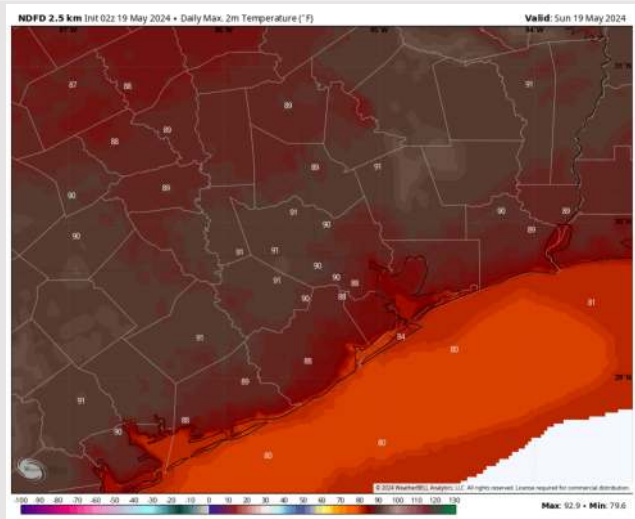
## Precip Image: 3 PM CT



Wind Speed:  
9 AM CT



High Temps  
Today



# Houston Pilots: Mon. 5/20/2024



## Forecast Discussion

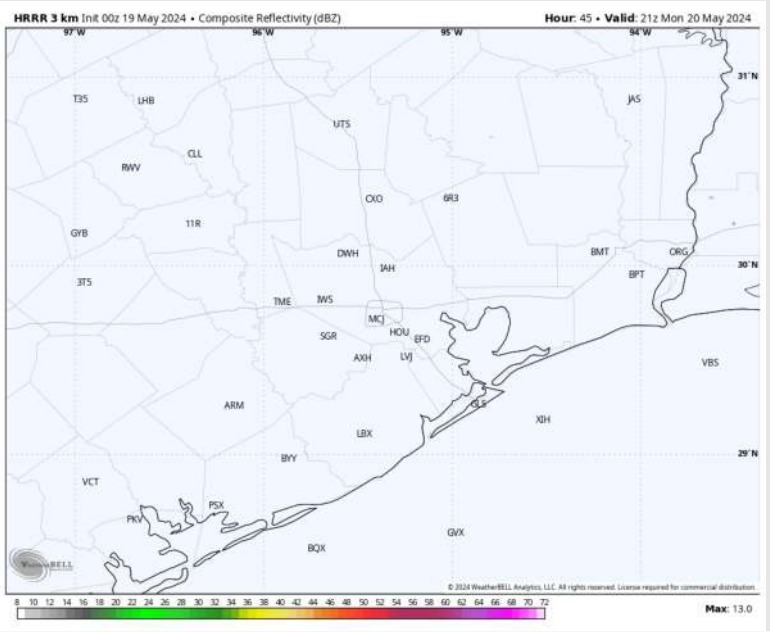
**Precip:** Favoring dry conditions for all of Monday.

**Wind:** Winds out of the SE for all of Monday. **N of Morgan's Point:** Winds at 5-10 kts through 4 PM before slightly increasing to 7-12 kts. **S of Morgan's Point:** Winds at 7 - 12 kts through 5 PM CT, then winds increase to 12-17 kts the rest of the PM hours. **A few gusts of up to 25 kts for the Boarding Station after 4PM can't be ruled out.**

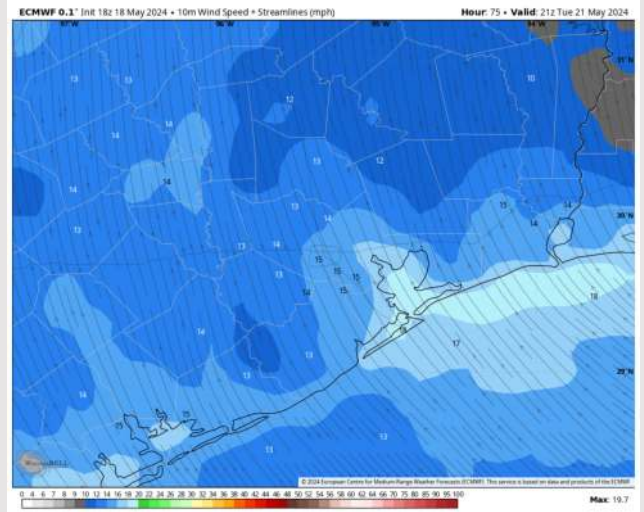
**High Temps:** **N of Morgan's Point:** Near 90F. **S of Morgan's Point:** Mid 80s F.

**Visibility:** Not anticipating any fog risks.

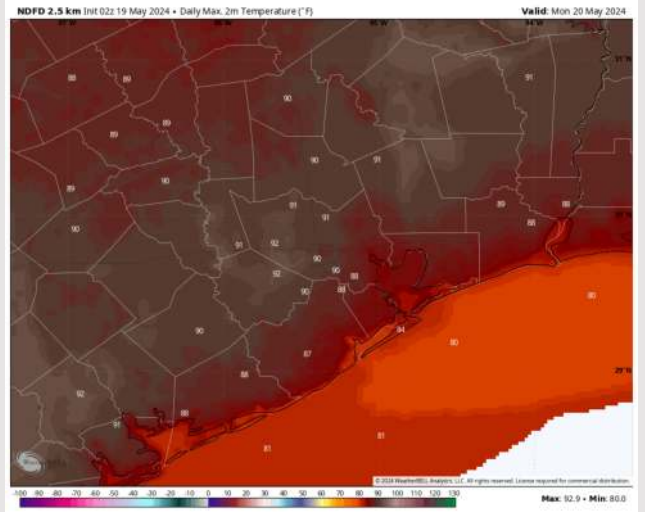
## Precip Image: 4 PM CT



Wind Speed  
7 PM CT



High Temps  
Monday



# Houston Pilots: Tue. 5/21/2024



## Forecast Discussion

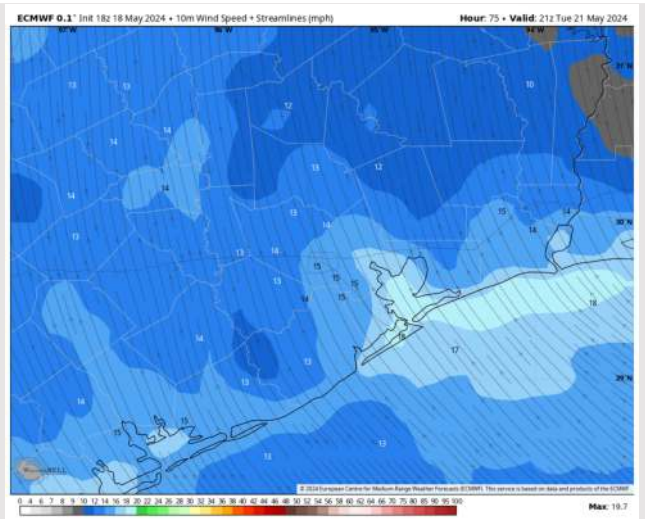
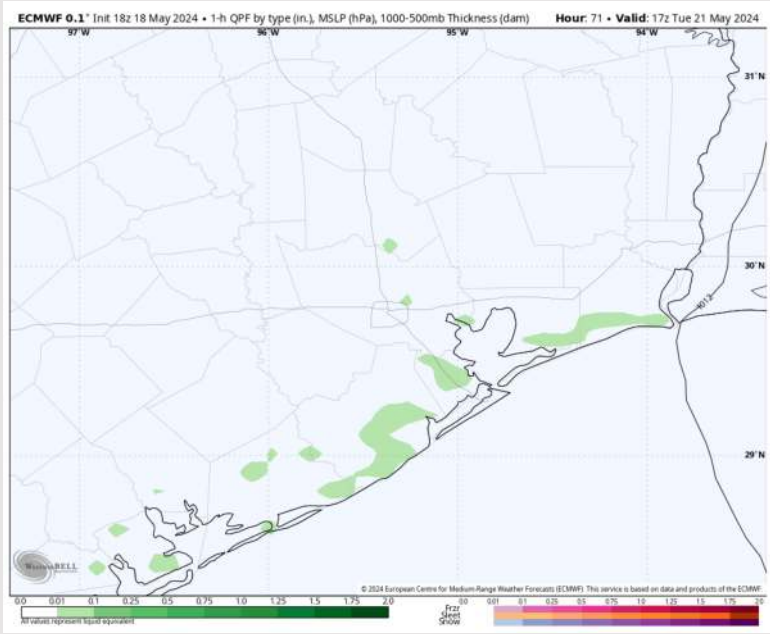
**Precip:** Hit/miss (30%) light showers in play for Station's S of Morgan's Point between 8 AM – 6 PM

**Wind:** Winds will remain out of the SE throughout TUE. **N of Morgan's Point:** Winds at 3-8 kts through 8 AM, increasing to 8-13 kts after that time. Winds then return to 3-8 kts at 8 PM. **S of Morgan's Point:** Winds at 13-18 kts throughout Tuesday. **Wind gusts of 18-22 kts possible for Stations S of Morgan's Point throughout the day, and for Stations N of Morgan's Point between 8 AM – 8 PM.**

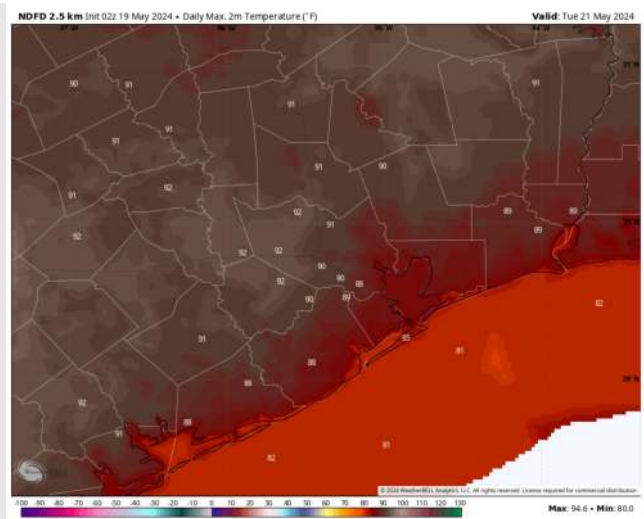
**High Temps:** **N of Morgan's Point:** Near 90 F. **S of Morgan's Point:** Low/Mid 80s F.

**Visibility:** No fog is favored for Tuesday.

## Precip Image: 12 PM CT



Wind Speed:  
4 PM CT

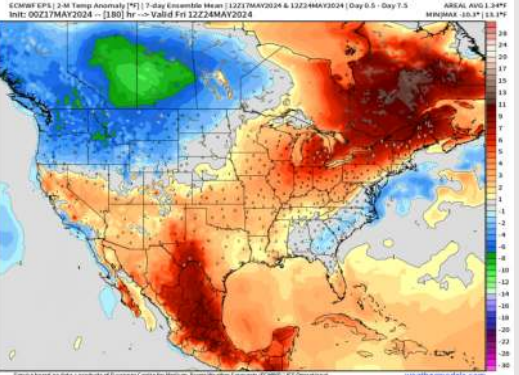


High Temps  
Tuesday

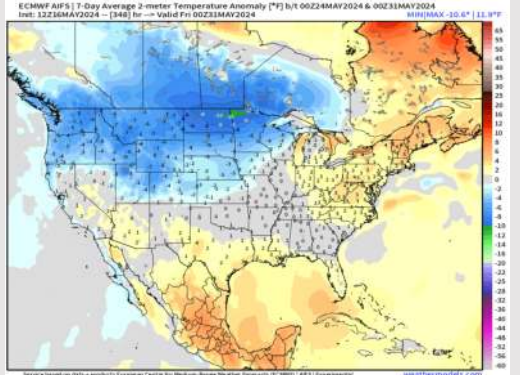
# Houston Pilots: 5/19/24



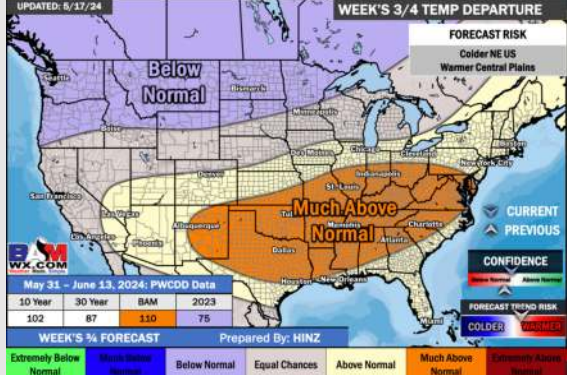
**Next 7 Day Temperature Departure**



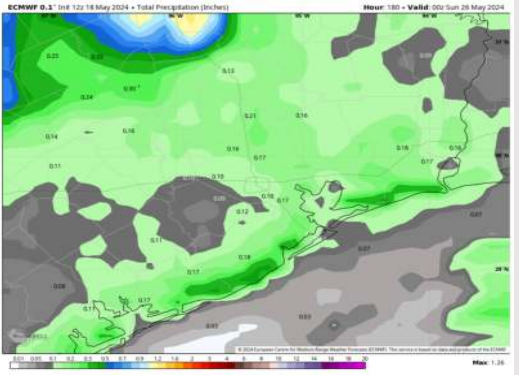
**8-14 Day Temperature Departure**



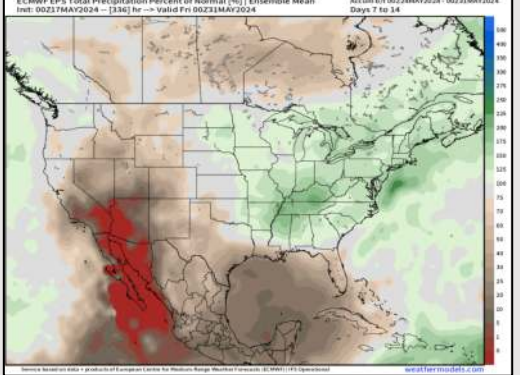
**15-30 Day Temperature Departure**



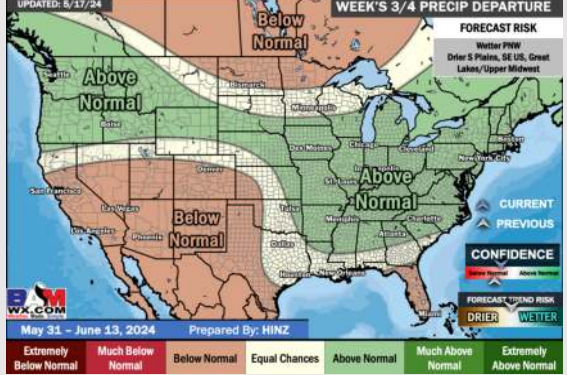
**Next 7 Day Total Precipitation**



**8-14 Day % of Average Precip.**



**15-30 Day % of Average Precip.**



- Favoring a dry weekend overall. Next best shot for hit/miss showers will come TUE AM. Temps are expected to be above normal for the week 1 timeframe.
- Below normal precipitation chances are at play during the week 2 timeframe. Temps are expected to be above normal.
- Near normal chances for precipitation are favored in the weeks 3/4 timeframe. Temperatures expected to be above normal for the weeks 3 and 4 timeframe.