

Houston Pilots Forecast Package



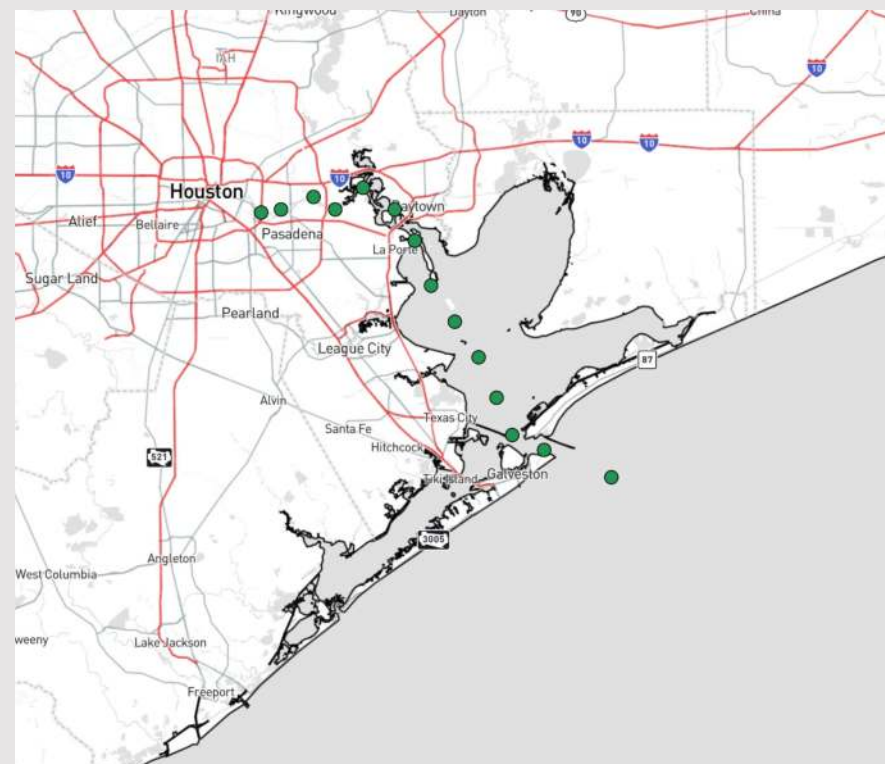
Updated: 12:00 AM CT

Saturday, May 11, 2024

Forecaster: John Kemper

Weather Headlines

- Thunderstorm chances begin to increase as we get beyond 6PM, with multiple rounds in play through at least Monday.
- Not anticipating any visibility concerns over the next few days.
- Winds for locations S of Morgan's point can reach up to 30kts for tomorrow afternoon / evening.



Current Radar: 11:55 PM CT



As always, please do not hesitate to reach out to us with any forecast questions via the chat option on Clarity or our on-call number, **(317)-560-8122** press 1 for forecast questions.

Houston Pilots Visibility Chart (miles)



| Time | Fri 11pm | Sat 12am | Sat 1am | Sat 2am | Sat 3am | Sat 4am | Sat 5am | Sat 6am | Sat 7am | Sat 8am | Sat 9am | Sat 10am | Sat 11am | Sat 12pm | Sat 1pm | Sat 2pm | Sat 3pm | Sat 4pm | Sat 5pm | Sat 6pm | Sat 7pm | Sat 8pm | Sat 9pm | Sat 10pm |
|-------------------|----------|----------|---------|---------|---------|---------|---------|---------|---------|---------|---------|----------|----------|----------|---------|---------|---------|---------|---------|---------|---------|---------|---------|----------|
| 610 Bridge | 10 | 10 | 10 | 10 | 10 | 10 | 10 | 10 | 10 | 10 | 10 | 10 | 10 | 10 | 10 | 10 | 10 | 10 | 10 | 10 | 10 | 10 | 10 | 10 |
| Kinder 1 | 10 | 10 | 10 | 10 | 10 | 10 | 10 | 10 | 10 | 10 | 10 | 10 | 10 | 10 | 10 | 10 | 10 | 10 | 10 | 10 | 10 | 10 | 10 | 10 |
| Greens Bayou | 10 | 10 | 10 | 10 | 10 | 10 | 10 | 10 | 10 | 10 | 10 | 10 | 10 | 10 | 10 | 10 | 10 | 10 | 10 | 10 | 10 | 10 | 10 | 10 |
| Shell Crude | 10 | 10 | 10 | 10 | 10 | 10 | 10 | 10 | 10 | 10 | 10 | 10 | 10 | 10 | 10 | 10 | 10 | 10 | 10 | 10 | 10 | 10 | 10 | 10 |
| Lynchburg Ferries | 10 | 10 | 10 | 10 | 10 | 10 | 10 | 10 | 10 | 10 | 10 | 10 | 10 | 10 | 10 | 10 | 10 | 10 | 10 | 10 | 10 | 10 | 10 | 10 |
| Exxon 3 | 10 | 10 | 10 | 10 | 10 | 10 | 10 | 10 | 10 | 10 | 10 | 10 | 10 | 10 | 10 | 10 | 10 | 10 | 10 | 10 | 10 | 10 | 10 | 10 |
| Morgans Point | 10 | 10 | 10 | 10 | 10 | 10 | 10 | 10 | 10 | 10 | 10 | 10 | 10 | 10 | 10 | 10 | 10 | 10 | 10 | 10 | 10 | 10 | 10 | 10 |
| 75/76 | 10 | 10 | 10 | 10 | 10 | 10 | 10 | 10 | 10 | 10 | 10 | 10 | 10 | 10 | 10 | 10 | 10 | 10 | 10 | 10 | 10 | 10 | 10 | 10 |
| 63/64 | 10 | 10 | 10 | 10 | 10 | 10 | 10 | 10 | 10 | 10 | 10 | 10 | 10 | 10 | 10 | 10 | 10 | 10 | 10 | 10 | 10 | 10 | 10 | 10 |
| 51/52 | 10 | 10 | 10 | 10 | 10 | 10 | 10 | 10 | 10 | 10 | 10 | 10 | 10 | 10 | 10 | 10 | 10 | 10 | 10 | 10 | 10 | 10 | 10 | 10 |
| 37/38 | 10 | 10 | 10 | 10 | 10 | 10 | 10 | 10 | 10 | 10 | 10 | 10 | 10 | 10 | 10 | 10 | 10 | 10 | 10 | 10 | 10 | 10 | 10 | 10 |
| 25/26 | 10 | 10 | 10 | 10 | 10 | 10 | 10 | 10 | 10 | 10 | 10 | 10 | 10 | 10 | 10 | 10 | 10 | 10 | 10 | 10 | 10 | 10 | 10 | 10 |
| 11/12 | 10 | 10 | 10 | 10 | 10 | 10 | 10 | 10 | 10 | 10 | 10 | 10 | 10 | 10 | 10 | 10 | 10 | 10 | 10 | 10 | 10 | 10 | 10 | 10 |
| 1 & 2 Bravo | 10 | 10 | 10 | 10 | 10 | 10 | 10 | 10 | 10 | 10 | 10 | 10 | 10 | 10 | 10 | 10 | 10 | 10 | 10 | 10 | 10 | 10 | 10 | 10 |

NOTE: This is automated data that may/may not agree with the official BAM thinking that's found on the daily slides or special visibility report slides. This data should be used as a guide only

Houston Pilots Wind Chart



Forecast Confidence



Example

Sustained wind 13 Knots
Gusts 18 Knots
Wind from the N

WS: 13
G:18
N

| Time Knots | Fri 11pm | Sat 12am | Sat 1am | Sat 2am | Sat 3am | Sat 4am | Sat 5am | Sat 6am | Sat 7am | Sat 8am | Sat 9am | Sat 10am | Sat 11am | Sat 12pm | Sat 1pm | Sat 2pm | Sat 3pm | Sat 4pm | Sat 5pm | Sat 6pm | Sat 7pm | Sat 8pm | Sat 9pm | Sat 10pm |
|-------------------|----------|----------|---------|---------|---------|---------|---------|---------|---------|---------|---------|----------|----------|----------|---------|---------|---------|---------|---------|---------|---------|---------|---------|----------|
| 610 Bridge | 7 | 6 | 6 | 6 | 6 | 6 | 6 | 7 | 7 | 9 | 9 | 9 | 9 | 10 | 11 | 9 | 9 | 9 | 9 | 9 | 9 | 7 | 7 | 6 |
| | 14 | 13 | 13 | 12 | 13 | 13 | 13 | 13 | 13 | 18 | 18 | 19 | 19 | 20 | 19 | 19 | 17 | 18 | 18 | 17 | 17 | 15 | 13 | 13 |
| | NE | NE | NE | NE | NE | NE | NE | NE | NE | ENE | ENE | ENE | E | E | E | E | E | ESE | ESE | ESE | ESE | ESE | ESE | ESE |
| Kinder 1 | 7 | 7 | 6 | 6 | 7 | 6 | 6 | 6 | 7 | 9 | 9 | 9 | 9 | 10 | 11 | 9 | 9 | 9 | 9 | 9 | 9 | 7 | 7 | 6 |
| | 14 | 13 | 12 | 12 | 13 | 13 | 13 | 13 | 14 | 18 | 18 | 19 | 18 | 19 | 18 | 19 | 17 | 18 | 18 | 17 | 17 | 15 | 13 | 12 |
| | NE | NE | NE | NE | NE | NE | NE | NE | NE | ENE | ENE | ENE | E | E | E | E | E | ESE | ESE | ESE | ESE | ESE | ESE | ESE |
| Greens Bayou | 7 | 6 | 6 | 6 | 6 | 6 | 6 | 6 | 7 | 9 | 9 | 9 | 9 | 9 | 9 | 9 | 9 | 9 | 9 | 9 | 8 | 7 | 6 | 5 |
| | 13 | 13 | 12 | 12 | 13 | 13 | 13 | 13 | 13 | 18 | 18 | 19 | 18 | 18 | 17 | 18 | 17 | 17 | 17 | 16 | 16 | 13 | 13 | 11 |
| | NE | NE | NE | NE | NE | NE | NE | NE | NE | ENE | ENE | ENE | E | E | E | E | E | ESE | ESE | ESE | ESE | ESE | ESE | ESE |
| Shell Crude | 7 | 6 | 6 | 6 | 7 | 7 | 7 | 7 | 7 | 9 | 9 | 9 | 9 | 10 | 9 | 9 | 9 | 9 | 9 | 9 | 8 | 7 | 6 | 6 |
| | 13 | 13 | 12 | 12 | 13 | 13 | 13 | 13 | 14 | 18 | 18 | 18 | 18 | 18 | 17 | 18 | 17 | 16 | 17 | 16 | 16 | 14 | 13 | 12 |
| | NE | NE | NE | NE | NE | NE | NE | NE | NE | ENE | ENE | ENE | E | E | E | E | E | ESE | ESE | ESE | ESE | ESE | ESE | ESE |
| Lynchburg Ferries | 6 | 6 | 5 | 5 | 6 | 6 | 6 | 6 | 7 | 8 | 9 | 9 | 9 | 10 | 9 | 9 | 9 | 9 | 9 | 9 | 8 | 7 | 6 | 5 |
| | 13 | 12 | 11 | 11 | 12 | 13 | 12 | 13 | 13 | 16 | 18 | 18 | 18 | 18 | 17 | 17 | 16 | 17 | 16 | 16 | 16 | 13 | 12 | 12 |
| | NE | NE | NE | NE | NE | NE | NE | NE | NE | ENE | ENE | ENE | E | E | E | E | ESE | ESE | ESE | ESE | ESE | ESE | ESE | ESE |
| Exxon 3 | 10 | 10 | 9 | 9 | 9 | 11 | 11 | 11 | 11 | 11 | 12 | 11 | 11 | 11 | 11 | 11 | 11 | 11 | 11 | 11 | 11 | 11 | 9 | 9 |
| | 14 | 14 | 13 | 13 | 14 | 15 | 16 | 16 | 16 | 18 | 18 | 19 | 19 | 18 | 17 | 18 | 17 | 17 | 18 | 17 | 17 | 15 | 13 | 13 |
| | NE | NE | NE | NE | NE | NE | NE | NE | NE | ENE | ENE | ENE | ENE | E | E | E | E | ESE | ESE | ESE | ESE | ESE | ESE | ESE |
| Morgans Point | 9 | 9 | 9 | 9 | 9 | 10 | 11 | 11 | 11 | 11 | 12 | 11 | 12 | 12 | 12 | 11 | 11 | 11 | 12 | 12 | 12 | 11 | 9 | 9 |
| | 15 | 15 | 13 | 14 | 15 | 16 | 16 | 17 | 18 | 19 | 19 | 19 | 19 | 19 | 18 | 19 | 18 | 18 | 19 | 18 | 17 | 16 | 14 | 14 |
| | NE | NE | NE | NE | NE | NE | NE | NE | NE | ENE | ENE | ENE | ENE | E | E | E | ESE | ESE | ESE | ESE | ESE | ESE | ESE | ESE |
| 75/76 | 15 | 15 | 15 | 14 | 15 | 17 | 17 | 17 | 18 | 18 | 17 | 16 | 15 | 15 | 15 | 14 | 14 | 15 | 16 | 17 | 16 | 15 | 14 | 13 |
| | 21 | 21 | 21 | 21 | 22 | 24 | 25 | 25 | 26 | 26 | 25 | 23 | 22 | 21 | 21 | 21 | 21 | 21 | 24 | 23 | 24 | 21 | 21 | 20 |
| | NE | NE | NE | NE | NE | NE | NE | ENE | ENE | ENE | ENE | ENE | ENE | E | E | E | E | ESE | ESE | ESE | ESE | E | E | E |
| 63/64 | 15 | 15 | 15 | 14 | 15 | 17 | 17 | 17 | 17 | 17 | 17 | 16 | 15 | 14 | 14 | 15 | 15 | 15 | 16 | 15 | 14 | 13 | 13 | 13 |
| | 22 | 22 | 21 | 21 | 22 | 24 | 25 | 25 | 25 | 25 | 24 | 23 | 21 | 21 | 20 | 21 | 22 | 22 | 22 | 23 | 22 | 21 | 20 | 18 |
| | NE | NE | ENE | NE | NE | NE | ENE | ENE | ENE | ENE | ENE | ENE | ENE | E | E | E | E | ESE | ESE | ESE | ESE | E | E | E |
| 51/52 | 14 | 14 | 13 | 13 | 14 | 15 | 15 | 16 | 16 | 17 | 16 | 16 | 16 | 16 | 16 | 16 | 16 | 15 | 15 | 15 | 15 | 14 | 13 | 11 |
| | 20 | 21 | 19 | 20 | 20 | 21 | 22 | 23 | 23 | 24 | 23 | 23 | 23 | 24 | 24 | 24 | 22 | 22 | 22 | 23 | 22 | 21 | 19 | 17 |
| | NE | NE | ENE | ENE | NE | NE | ENE | ENE | ENE | ENE | ENE | ENE | E | E | E | E | E | E | ESE | ESE | ESE | ESE | E | E |
| 37/38 | 13 | 13 | 13 | 13 | 14 | 15 | 15 | 17 | 17 | 17 | 17 | 17 | 17 | 16 | 17 | 17 | 15 | 15 | 15 | 15 | 15 | 14 | 13 | 11 |
| | 19 | 20 | 19 | 20 | 21 | 21 | 22 | 24 | 24 | 25 | 24 | 24 | 24 | 25 | 25 | 24 | 23 | 22 | 22 | 22 | 22 | 21 | 19 | 16 |
| | NE | NE | ENE | ENE | NE | NE | ENE | ENE | ENE | ENE | ENE | ENE | ENE | E | E | E | E | E | E | E | E | E | ESE | E |
| 25/26 | 12 | 13 | 12 | 13 | 14 | 14 | 15 | 15 | 16 | 16 | 16 | 17 | 17 | 17 | 17 | 16 | 16 | 16 | 15 | 15 | 15 | 14 | 13 | 11 |
| | 17 | 18 | 17 | 19 | 20 | 21 | 21 | 22 | 23 | 23 | 23 | 24 | 24 | 25 | 25 | 24 | 23 | 22 | 21 | 21 | 21 | 20 | 17 | 15 |
| | NE | NE | ENE | ENE | NE | NE | ENE | ENE | ENE | ENE | ENE | ENE | ENE | E | E | E | E | E | E | E | E | E | ESE | E |
| 11/12 | 9 | 10 | 9 | 11 | 11 | 12 | 13 | 14 | 15 | 15 | 16 | 17 | 17 | 17 | 17 | 16 | 16 | 15 | 14 | 13 | 13 | 12 | 10 | 9 |
| | 13 | 14 | 14 | 16 | 17 | 18 | 19 | 21 | 21 | 22 | 23 | 24 | 24 | 25 | 25 | 24 | 23 | 21 | 20 | 19 | 18 | 17 | 15 | 13 |
| | NE | NE | ENE | ENE | NE | NE | ENE | ENE | ENE | ENE | ENE | ENE | ENE | E | E | E | E | E | E | E | E | E | ESE | E |
| 1 & 2 Bravo | 12 | 13 | 13 | 15 | 16 | 17 | 17 | 19 | 19 | 19 | 19 | 19 | 19 | 18 | 17 | 17 | 16 | 15 | 15 | 16 | 15 | 14 | 13 | 12 |
| | 17 | 19 | 19 | 21 | 23 | 24 | 26 | 27 | 27 | 27 | 27 | 28 | 27 | 26 | 25 | 25 | 23 | 22 | 22 | 23 | 21 | 21 | 20 | 18 |
| | ENE | ENE | ENE | ENE | ENE | ENE | ENE | ENE | ENE | ENE | ENE | ENE | ENE | E | E | E | E | E | E | E | E | E | ESE | E |

NOTE: This is automated data that may/may not agree with the official BAM thinking that's found on the daily slides. This data should be used as a guide only

Houston Pilots: Sat. 5/11/2024



Forecast Discussion

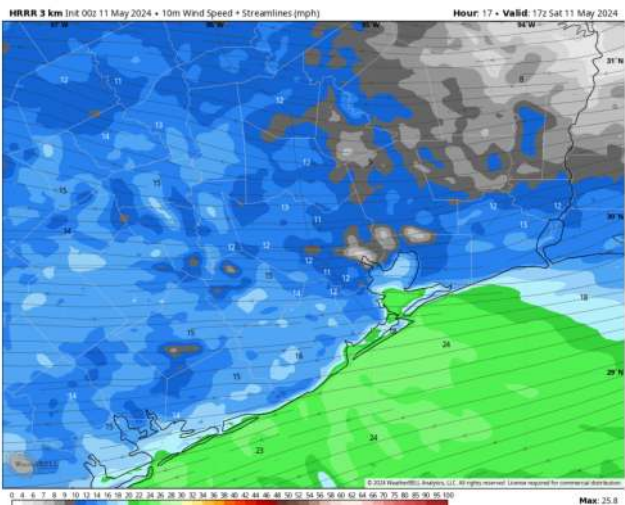
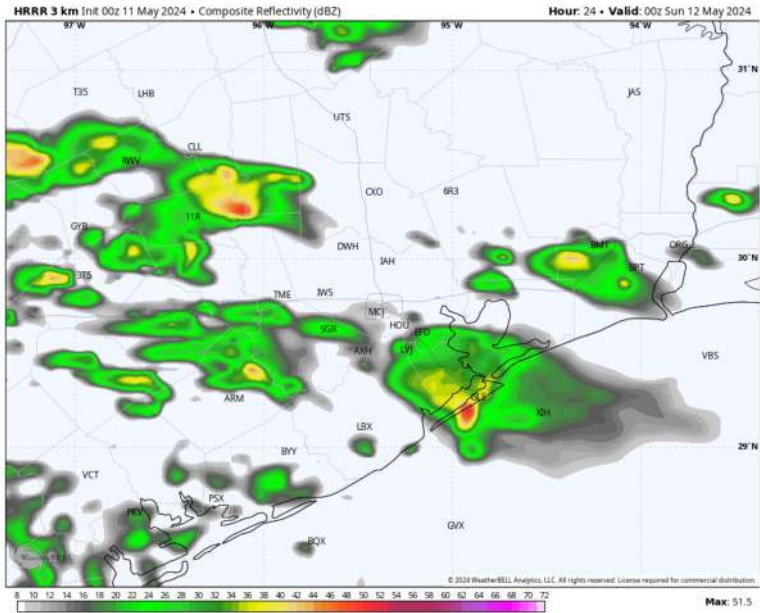
Precip: Dry conditions favored through 3 PM. Hit/miss showers will then be in play for all Stations. After 6 PM, rain chances will increase in coverage (40%) with a risk for a few storms to mix in as well, especially as we get later into the evening. **A few storms will be capable of small hail and gusts of 35 – 40 kts in a localized fashion.**

Wind: Winds begin the day out of the ENE and gradually shift out of the E through 6 PM before becoming ESE. **N of Morgan's Point:** Winds at 5-10 kts throughout the day. **S of Morgan's Point:** Winds at 10-15 kts through 6 PM, decreasing to 7-12 kts after that time. **Non thunderstorm gusts able to reach 25-30 kts S of Morgan's Point through 2 PM, and N of Morgan's Point between 7-10 AM.**

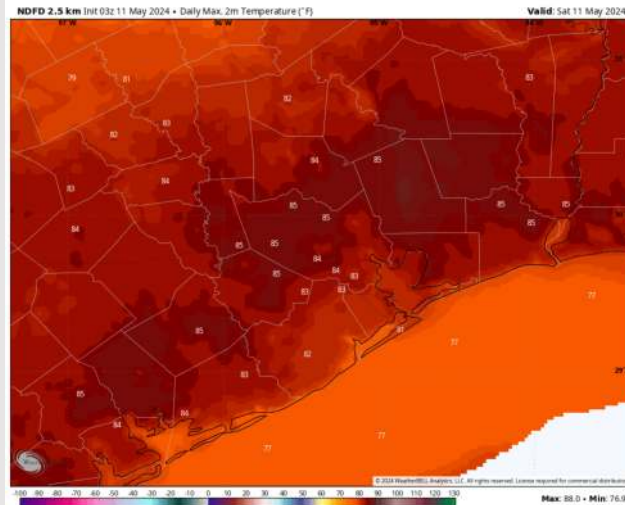
High Temps: **N of Morgan's Point:** Low 80s F. **S of Morgan's Point:** Upper 70s F.

Visibility: Not favoring any fog concerns for today.

Precip Image: 7 PM CT



Wind Speed
12 PM CT



High Temps
Today

Houston Pilots: Sun. 5/12/2024



Forecast Discussion

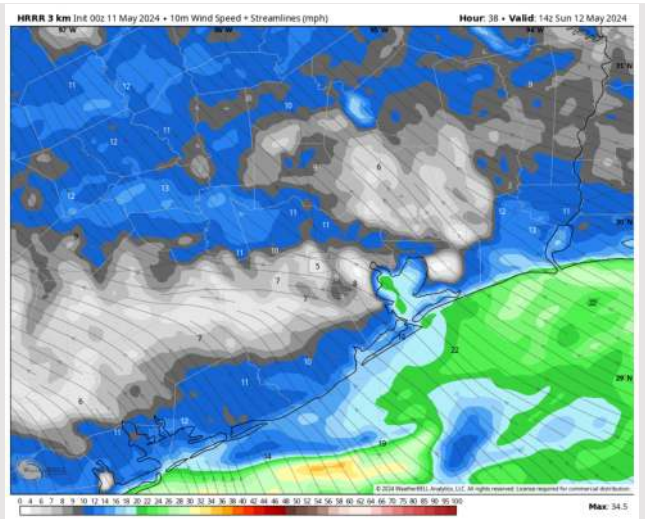
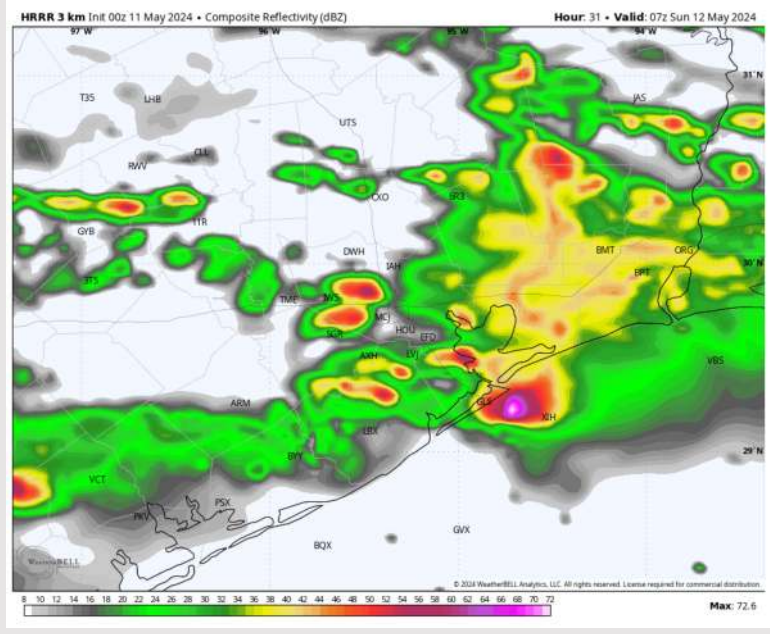
Precip: Hit/miss (50%) showers and storms in play through 7 AM. Coverage then becomes scattered to widespread (60-70%) and storm chances begin after that time and remains that way through 9 PM before returning to hit/miss. **Lightning and wind gusts of 35-45 kts will be the main risks with storms.**

Wind: Winds will be out of the SE throughout the day Sunday. **N of Morgan's Point:** Winds at 5-10 kts through 3 PM, increasing to 8-13 kts after that time. Winds then return to 5-10 kts after 5 PM. **S of Morgan's Point:** Winds at 15 - 20 kts throughout Sunday. **Non-T-Storm Gusts of up to 25kts will be possible for all stations throughout the day!**

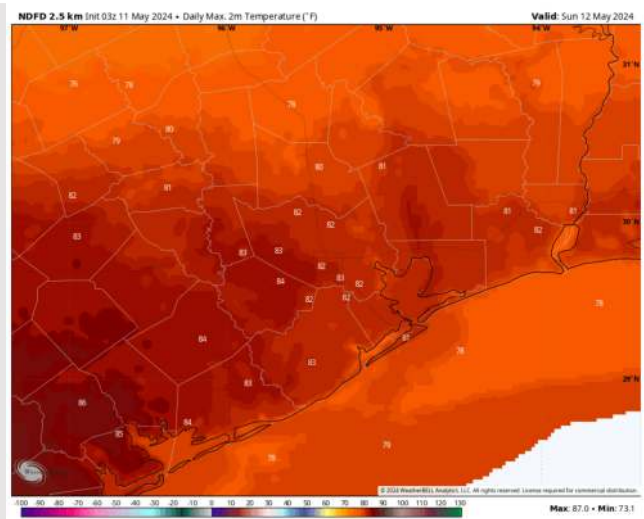
High Temps: **N of Morgan's Point:** Upper 70s-Near 80 F. **S of Morgan's Point:** Upper 70s F.

Visibility: Not favoring any fog concerns Sunday, however visibilities can be reduced under heavy downpours.

Precip Image: 1 AM CT



Wind Speed:
2 PM CT



High Temps
Sunday

Houston Pilots: Mon. 5/13/2024



Forecast Discussion

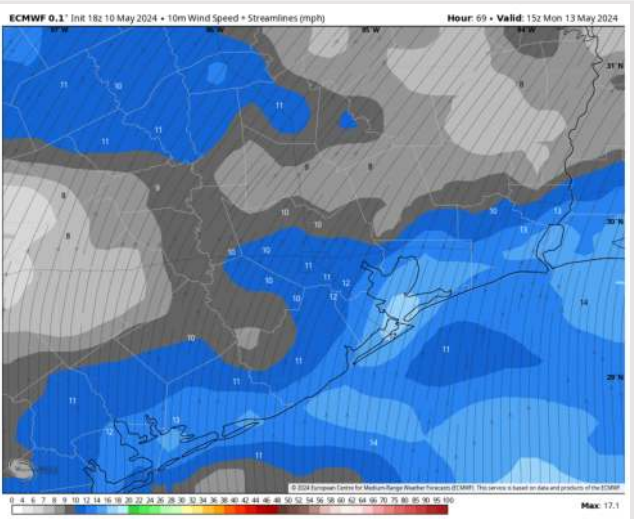
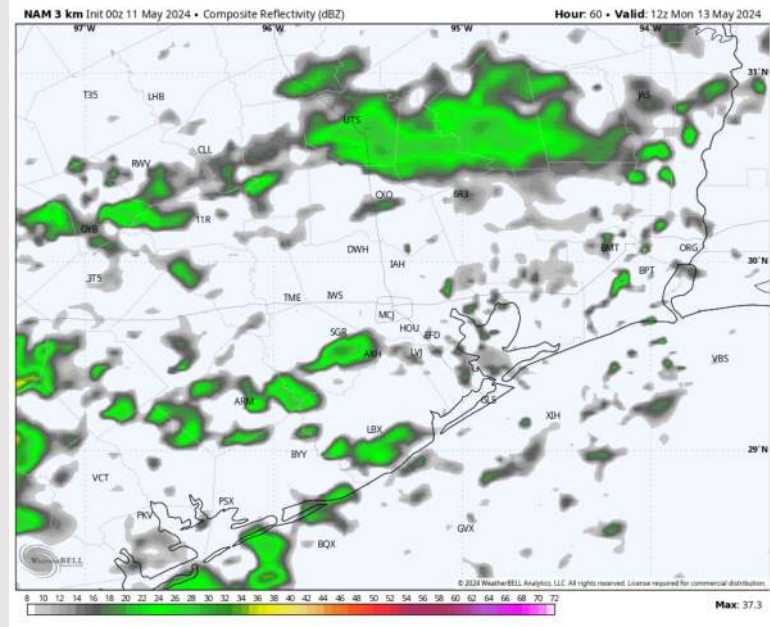
Precip: A couple isolated showers will be possible through ~10 AM-CT, then anticipating clear conditions through the mid afternoon. Scattered thunderstorms likely build in no later than 6PM to the west (30%), with a few stronger gusts of up to 35kts possible.

Wind: Winds will be out of the S / SW for the entire day / prior to a front passing around 11PM, which is when winds will become variable for a brief time. **N of Morgan's Point:** Winds at 3-8 kts for the entire day. **S of Morgan's Point:** Winds at 10 - 15 kts for the entire day. Non T-Storm Gusts may reach 25 kts at times near the Boarding Station and 11/12 after 8PM.

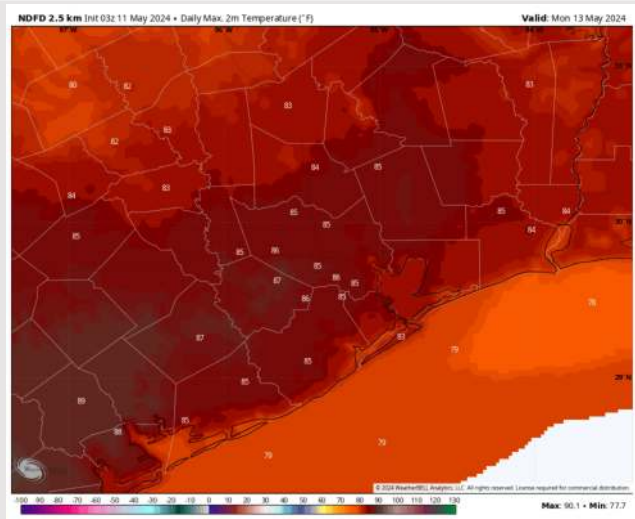
High Temps: **N of Morgan's Point:** Mid 80s F **S of Morgan's Point:** Low 80s F.

Visibility: Not anticipating any visibility concerns for the evening.

Precip Image: 7 AM CT



Wind Speed:
10 AM CT

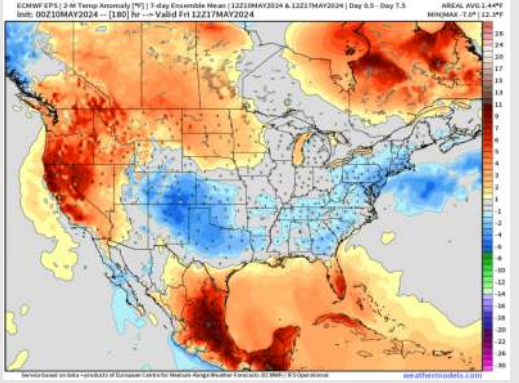


High Temps
Monday

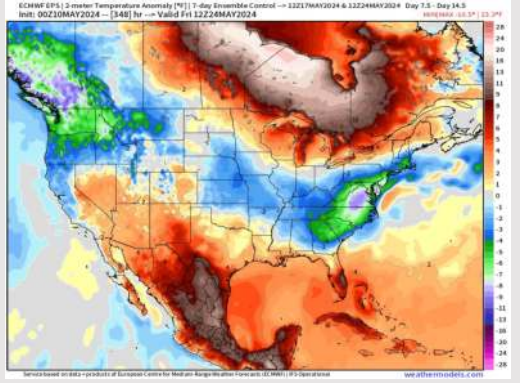
Houston Pilots: 5/11/24



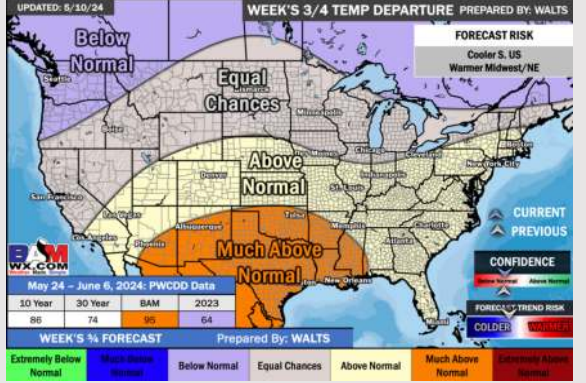
Next 7 Day Temperature Departure



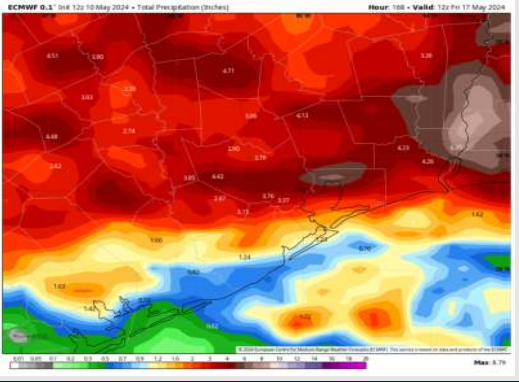
8-14 Day Temperature Departure



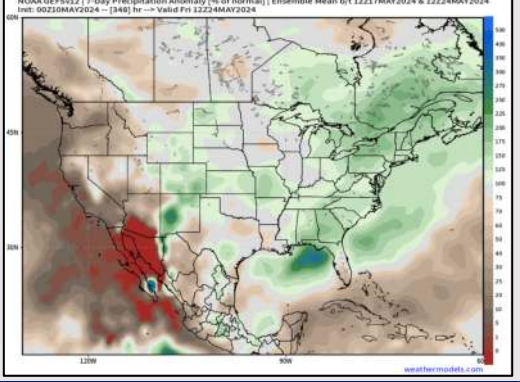
15-30 Day Temperature Departure



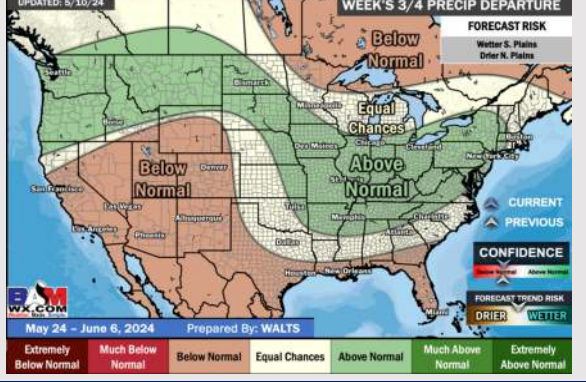
Next 7 Day Total Precipitation



8-14 Day % of Average Precip.



15-30 Day % of Average Precip.



- Scattered shower /storm chances gradually increase Saturday PM, with next best rain chances returning SUN AM. Temps are expected to be slightly above normal for the week 1 timeframe.
- Near normal precipitation chances are at play during the week 2 timeframe. Temps are expected to be slightly above normal.
- Below normal chances for precipitation are favored in the weeks ¾ timeframe. Temperatures expected to be much above normal for the weeks 3 and 4 timeframe.