

Houston Pilots Forecast Package



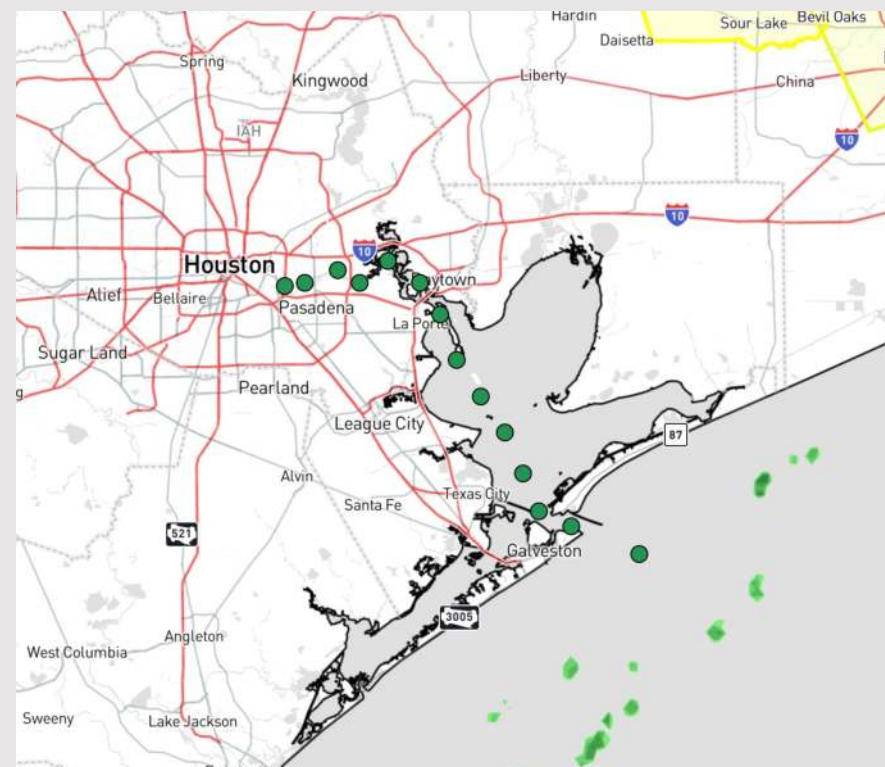
Updated: 11:00 PM CT

Friday, May 10, 2024

Forecaster: Tyler Riggles

Weather Headlines

- Hit/miss shower chances expected for today and SAT. Next best shower/storm chances move in on SUN.
- Hazy conditions are reducing visibility to 2 - 4 miles for all stations this morning. See visibility slide for more info.
- No elevated wind gust concerns today, however wind gusts of 20-25 kts will be in play SAT.



Current Radar: 11:00 PM CT



As always, please do not hesitate to reach out to us with any forecast questions via the chat option on Clarity or our on-call number, **(317)-560-8122** press 1 for forecast questions.

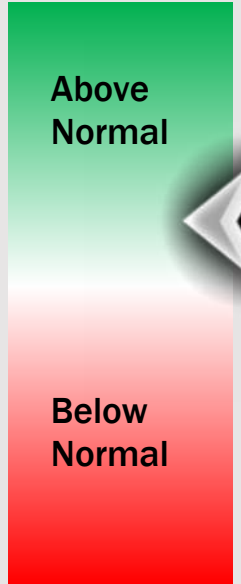
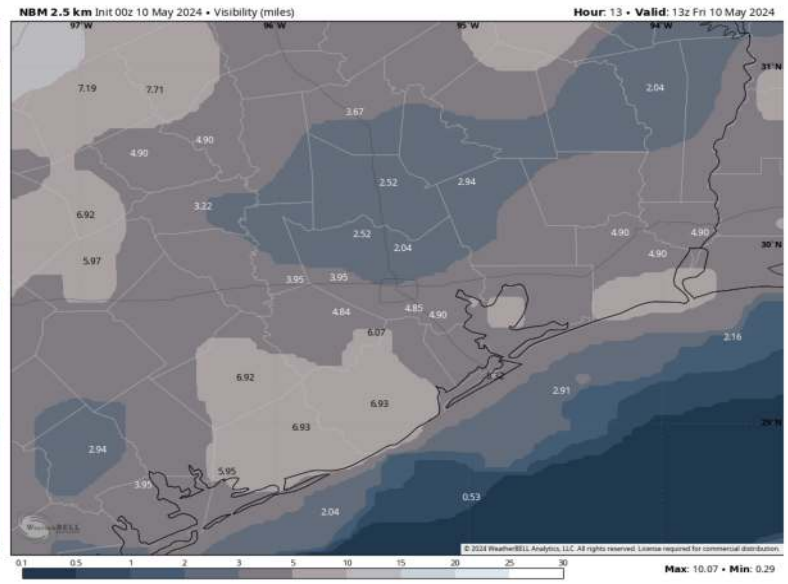
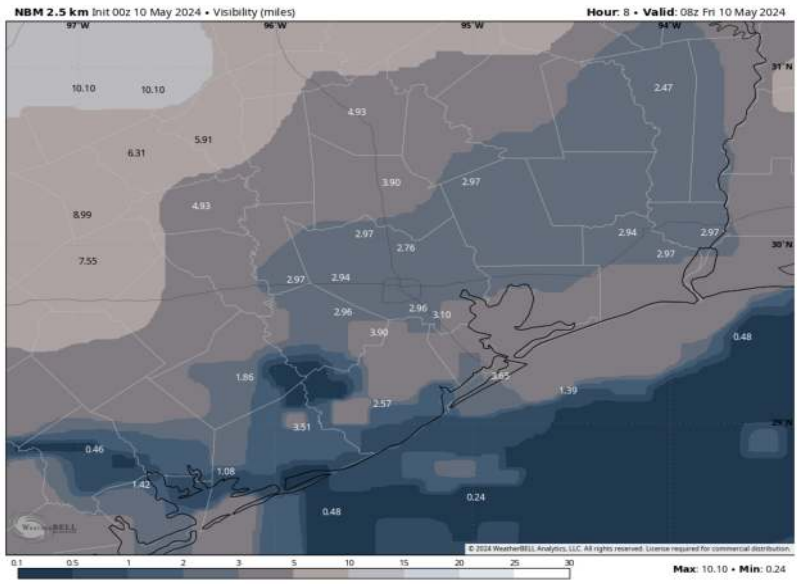
Houston Pilots Visibility Report



3 AM CT FRI VISIBILITY

8 AM CT FRI VISIBILITY

Confidence



TIMEFRAME DISCUSSED	THREAT
CURRENT - 12 PM FRI	LOW

- Hazy conditions / a low cloud deck is expected to continue for the Houston Metro / Galv. Bay region through ~12 PM Friday.
- Visibility for all stations will continue to sit generally in the 2 – 4-mile range for the overnight and this morning. Between 3 – 7 AM CT, there is a low-end risk for a couple isolated instances of visibility dropping to 1 mile or less for stations S of Morgan’s Point.
- Anticipating these hazy conditions / low cloud deck clears up after the 12 PM timeframe tomorrow.

Houston Pilots Visibility Chart (miles)



Time	Thu 11pm	Fri 12am	Fri 1am	Fri 2am	Fri 3am	Fri 4am	Fri 5am	Fri 6am	Fri 7am	Fri 8am	Fri 9am	Fri 10am	Fri 11am	Fri 12pm	Fri 1pm	Fri 2pm	Fri 3pm	Fri 4pm	Fri 5pm	Fri 6pm	Fri 7pm	Fri 8pm	Fri 9pm	Fri 10pm
610 Bridge	4	3	3	3	3	3	3	4	4	3	3	4	3	4	4	4	5	7	6	6	6	5	6	6
Kinder 1	4	3	3	3	3	3	3	4	4	3	3	4	4	4	4	4	5	7	8	6	6	6	6	6
Greens Bayou	4	3	3	3	3	3	3	4	4	3	4	4	4	4	4	4	5	9	9	8	6	6	8	6
Shell Crude	4	4	3	3	3	3	3	4	4	4	4	4	4	4	5	5	5	10	10	10	9	8	10	9
Lynchburg Ferries	4	3	3	3	3	3	3	4	4	3	4	4	4	4	5	4	5	9	9	8	6	6	8	6
Exxon 3	4	4	4	3	3	3	4	4	4	4	4	4	4	4	5	5	5	10	10	10	9	8	10	9
Morgans Point	4	4	4	3	3	3	4	4	4	4	4	4	4	4	5	5	6	10	10	10	10	10	10	10
75/76	6	6	4	3	4	3	4	6	6	6	6	6	10	10	10	10	10	10	10	10	10	10	10	
63/64	8	6	4	3	4	2	4	6	6	6	6	7	10	10	10	10	10	10	10	10	10	10	10	
51/52	6	4	1	3	4	1	1	6	6	6	6	7	10	10	10	9	10	10	10	10	10	10	10	
37/38	6	4	1	3	4	1	1	6	6	6	6	6	7	10	10	9	9	10	10	10	10	10	10	
25/26	6	4	1	3	3	1	1	3	5	6	5	6	7	10	10	9	9	10	10	10	10	10	10	
11/12	4	4	2	3	3	3	1	2	5	5	5	6	6	10	10	9	9	9	9	10	10	10	10	
1 & 2 Bravo	2	2	2	2	1	2	0.7	1	2	3	4	5	6	10	10	8	8	9	9	9	9	10	10	

NOTE: This is automated data that may/may not agree with the official BAM thinking that's found on the daily slides or special visibility report slides. This data should be used as a guide only

Houston Pilots Wind Chart



Forecast Confidence



Sustained wind 13 Knots
Gusts 18 Knots
Wind from the N

Example

WS: 13
G:18
N

Time Knots	Thu 11pm	Fri 12am	Fri 1am	Fri 2am	Fri 3am	Fri 4am	Fri 5am	Fri 6am	Fri 7am	Fri 8am	Fri 9am	Fri 10am	Fri 11am	Fri 12pm	Fri 1pm	Fri 2pm	Fri 3pm	Fri 4pm	Fri 5pm	Fri 6pm	Fri 7pm	Fri 8pm	Fri 9pm	Fri 10pm
610 Bridge	3	3	3	3	3	3	5	5	7	7	8	9	9	9	9	9	9	9	9	9	9	7	7	7
	5	6	6	7	6	6	9	11	13	13	14	16	15	16	16	16	15	16	16	15	14	14	14	14
	E	E	NE	NNE	N	NNE	NNE	N	N	NNE	NE	NE	NE	NE	NE	NE	NE	NE	NE	NE	NE	NE	NNE	NE
Kinder 1	3	3	3	3	3	3	5	5	7	7	8	9	9	9	9	9	9	9	9	9	8	7	7	8
	6	6	7	6	6	6	9	11	13	13	14	16	15	15	16	15	15	16	16	14	14	14	14	14
	E	E	NE	N	N	NNE	N	N	N	NNE	NE	NE	NE	NE	NE	NE	NE	NE	NE	NE	NE	NNE	NNE	NE
Greens Bayou	3	3	3	3	3	3	4	5	7	7	7	9	9	9	9	9	9	9	9	8	7	7	7	7
	6	6	5	7	6	6	8	11	13	13	13	15	15	15	15	15	15	15	15	14	14	14	14	14
	E	E	NE	N	N	NNE	N	N	N	NNE	NNE	NE	NE	NE	NE	NE	NE	NE	NE	NE	NNE	NNE	NNE	NE
Shell Crude	3	3	3	3	3	3	4	5	7	7	7	8	9	9	9	8	9	9	9	8	7	7	7	7
	5	6	5	6	6	6	8	11	13	13	13	15	14	15	15	15	15	15	15	14	14	14	14	14
	E	E	NE	N	N	NNE	N	N	N	NNE	NNE	NE	NE	NE	NE	NE	NE	NE	NE	NE	NNE	NNE	NNE	NE
Lynchburg Ferries	3	3	3	3	3	3	4	5	7	6	7	8	9	9	8	9	9	9	8	8	7	7	7	7
	6	6	5	6	5	6	7	11	13	13	13	15	15	15	15	14	15	15	15	15	15	13	13	13
	E	ENE	NE	NNE	N	NNE	N	N	N	NNE	NNE	NE	NE	NE	NE	NE	NE	NE	NE	NE	NNE	NNE	NNE	NNE
Exxon 3	4	4	3	4	5	6	7	8	9	9	10	10	10	9	9	9	9	9	10	9	9	10	9	11
	6	6	6	7	6	9	11	12	13	13	14	15	15	15	15	14	15	15	15	14	14	14	14	15
	ESE	E	ENE	NNE	N	N	N	N	NNE	NNE	NNE	NE	NE	NE	NE	NE	NE	NE	NE	NE	NE	NE	NE	NNE
Morgans Point	3	4	3	4	3	5	7	7	8	9	9	9	9	9	9	9	9	9	9	8	9	9	10	10
	6	6	6	6	6	7	10	12	13	13	13	14	15	14	14	14	15	14	14	14	13	14	14	15
	E	E	NE	NE	N	N	N	N	NNE	NNE	NNE	NE	NE	NE	NE	NE	NE	NE	NE	NE	NE	NE	NE	NNE
75/76	5	6	6	5	5	7	9	10	11	12	12	12	11	11	10	9	10	11	12	12	12	12	13	13
	8	9	8	8	8	10	13	14	16	17	17	18	17	16	17	17	17	17	17	18	17	18	18	19
	E	E	NE	NE	NNE	NNE	NNE	N	NNE	NNE	NE	NE	NE	NE	NE	NE	NE	NE	ENE	NE	NE	NE	NE	NE
63/64	5	6	5	5	5	6	9	9	11	11	11	12	11	11	9	9	9	11	11	11	12	11	11	13
	7	9	8	7	7	9	13	13	16	16	17	18	17	16	17	17	17	17	16	17	17	16	17	19
	E	E	NE	NE	NE	NNE	NNE	NNE	NNE	NNE	NE	NE	NE	NE	NE	NE	NE	NE	NE	NE	NE	NE	NE	NE
51/52	3	5	5	4	4	5	7	9	11	11	11	11	11	10	9	9	9	9	9	10	9	11	9	11
	4	7	6	5	6	8	10	13	15	15	15	16	15	15	15	15	15	15	14	14	14	15	14	16
	ESE	E	NE	ENE	NE	NNE	NNE	NNE	NNE	NNE	NE	NE	NE	NNE	NNE	NNE	NNE	NNE	NE	NE	NE	NE	NE	NE
37/38	3	5	4	4	4	5	6	8	9	9	11	11	11	9	9	9	8	9	8	9	9	9	11	11
	5	6	5	5	6	7	8	12	14	14	15	16	15	15	14	14	14	14	13	13	13	13	15	15
	ESE	E	ENE	ENE	ENE	NNE	NNE	NNE	NNE	NNE	NE	NE	NE	NNE	NNE	NNE	NNE	ENE	ENE	NE	NE	NE	NE	NE
25/26	3	4	3	3	4	5	5	8	9	9	9	10	11	10	9	9	9	9	8	8	9	9	9	9
	4	5	5	5	5	6	7	12	13	14	14	14	15	15	14	13	14	13	13	12	12	13	13	13
	ESE	ENE	ENE	ENE	ENE	NNE	NNE	NNE	NNE	NNE	NE	NE	NE	NE	NE	NNE	NE	E	ENE	ENE	ENE	NE	NE	NE
11/12	3	3	3	3	3	4	4	5	7	7	8	9	9	9	9	9	8	8	9	8	7	7	7	7
	6	5	6	6	5	6	6	8	11	11	13	13	14	14	14	13	12	11	12	12	9	10	12	13
	E	ENE	ENE	ENE	ENE	NE	NNE	NNE	NNE	NNE	NE	NE	NE	NE	NE	NE	ENE	ENE	ENE	ENE	ENE	NE	NE	NE
1 & 2 Bravo	5	7	5	6	5	6	5	7	9	9	9	11	11	11	9	9	9	9	9	8	9	9	11	11
	9	10	8	9	8	8	8	10	13	13	14	15	16	15	14	13	13	13	13	13	12	13	14	16
	ESE	ENE	ENE	ENE	ENE	NE	NNE	NNE	NNE	NNE	NNE	NE	NE	NE	ENE	ENE	ENE	ENE	ENE	ENE	ENE	ENE	NE	NE

NOTE: This is automated data that may/may not agree with the official BAM thinking that's found on the daily slides. This data should be used as a guide only

Houston Pilots: Fri. 5/10/2024



Forecast Discussion

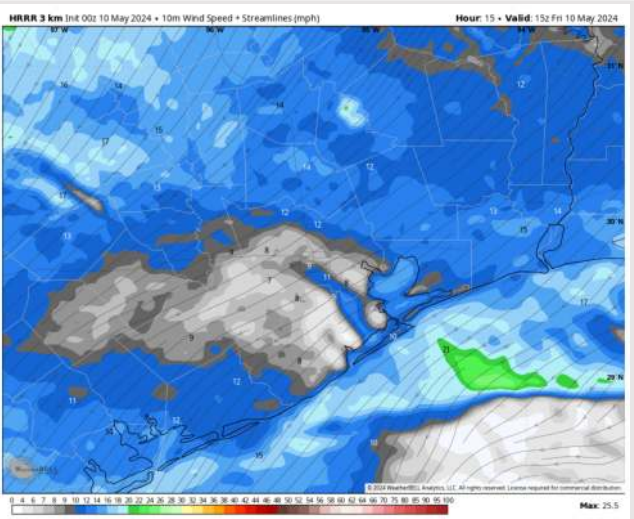
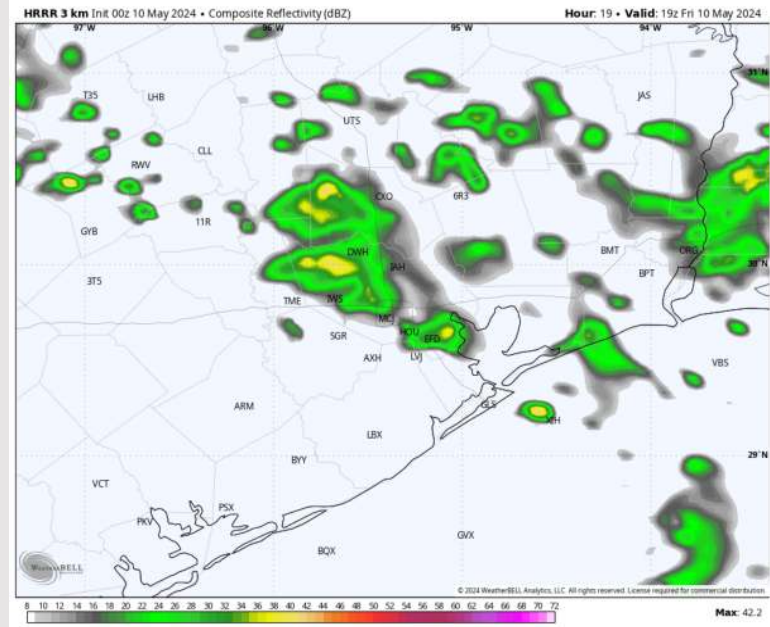
Precip: Risk for a localized thunderstorm through ~2 AM. A few localized gusts of 35-40 kts will be possible with any storm. Mostly dry conditions favored for the rest of the day, however hit/miss showers will be possible between 9 AM – 3 PM.

Wind: Winds will quickly shift after midnight where they will then be out of the NE for the entire day on today. **N of Morgan's Point:** Winds at 5-10 kts through 8 AM before increasing to 9-14 kts. Winds remain there through 5 PM before decreasing to 5-10 kts the rest of the evening. **S of Morgan's Point:** Winds at 12-17 kts through 5 PM before decreasing to 9-14 kts the rest of the day.

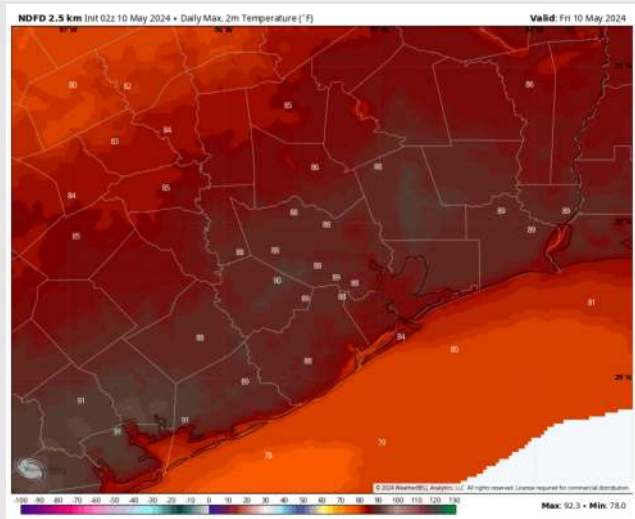
High Temps: **N of Morgan's Point:** Mid 80s F **S of Morgan's Point:** Low 80's F.

Visibility: Favoring a low cloud deck/hazy conditions to continue through 12 PM. (See visibility slide)

Precip Image: 2 PM CT



Wind Speed:
10 AM CT



High Temps
Today

Houston Pilots: Sat. 5/11/2024



Forecast Discussion

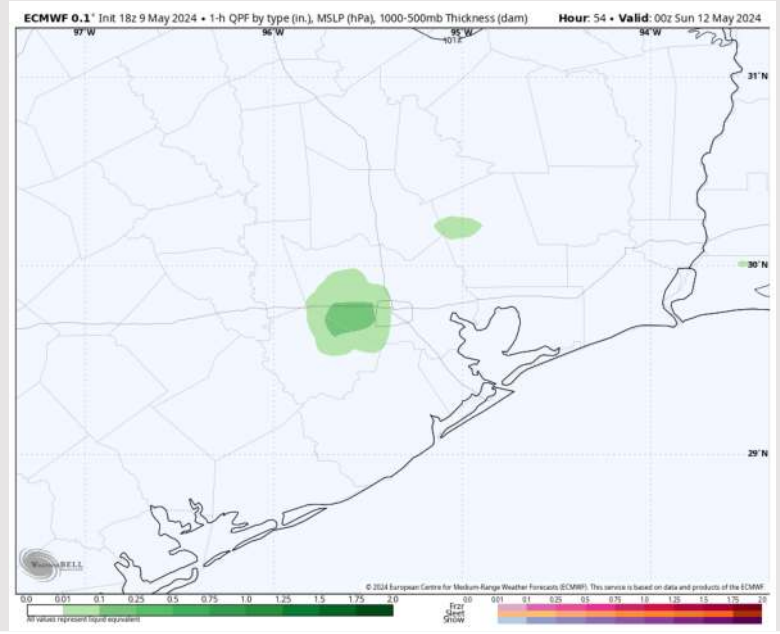
Precip: Dry conditions favored through 7 PM. Hit/miss showers will then be in play for all Stations after that time.

Wind: Winds begin the day out of the NE and gradually shift out of the ESE through 7 PM. **N of Morgan's Point:** Winds at 5-10 kts throughout Saturday. **S of Morgan's Point:** Winds at 10-15 kts through 7 PM, decreasing to 7-12 kts after that time. **Wind gusts able to reach 20-25 kts S of Morgan's Point through 2 PM, and N of Morgan's Point between 7-10 AM**

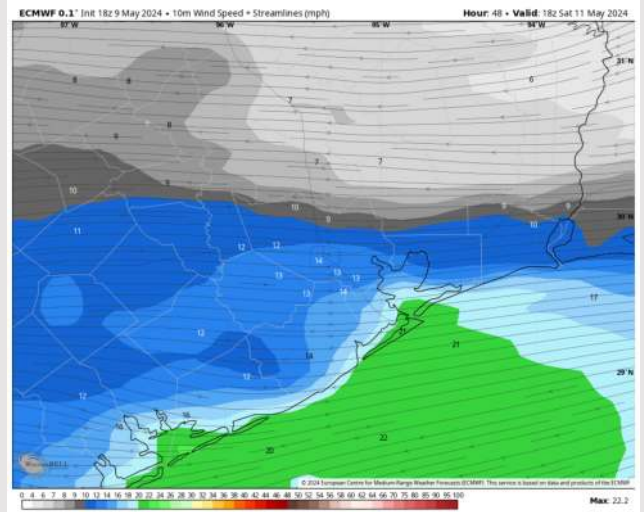
High Temps: **N of Morgan's Point:** Low 80s F. **S of Morgan's Point:** Upper 70s F.

Visibility: Not favoring any fog concerns for Saturday.

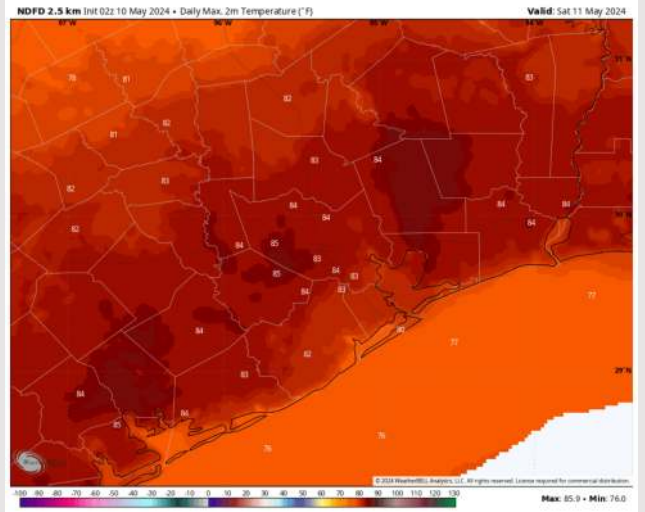
Precip Image: 7 PM CT



Wind Speed
1 PM CT



High Temps
Saturday



Houston Pilots: Sun. 5/12/2024



Forecast Discussion

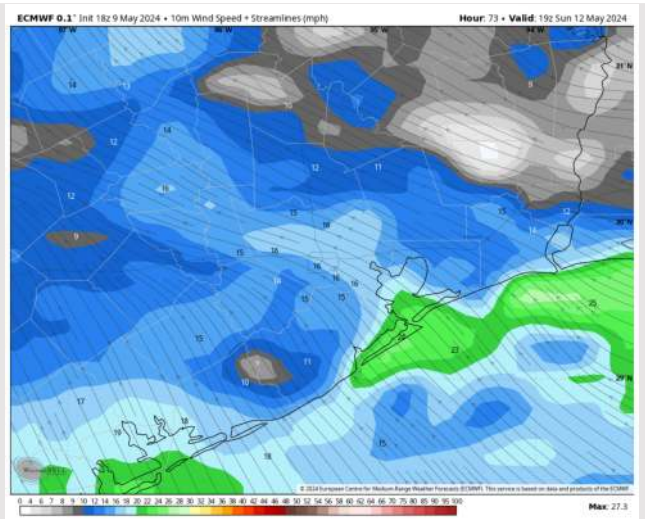
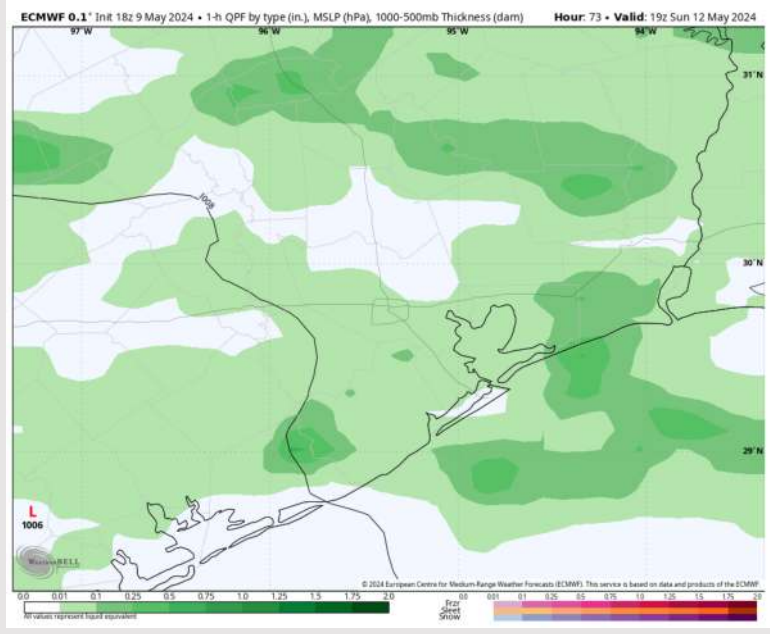
Precip: Hit/miss (20-30%) showers in play through 7 AM. Coverage then becomes scattered to widespread (60-70%) and storm chances begin after that time and remains that way through 9 PM before returning to hit/miss. **Lightning and wind gusts of 25-30 kts will be the main risks with storms.**

Wind: Winds will be out of the SE throughout the day Sunday. **N of Morgan's Point:** Winds at 5-10 kts through 1 PM, increasing to 8-13 kts after that time. Winds then return to 5-10 kts after 5 PM. **S of Morgan's Point:** Winds at 15 - 20 kts throughout Sunday.

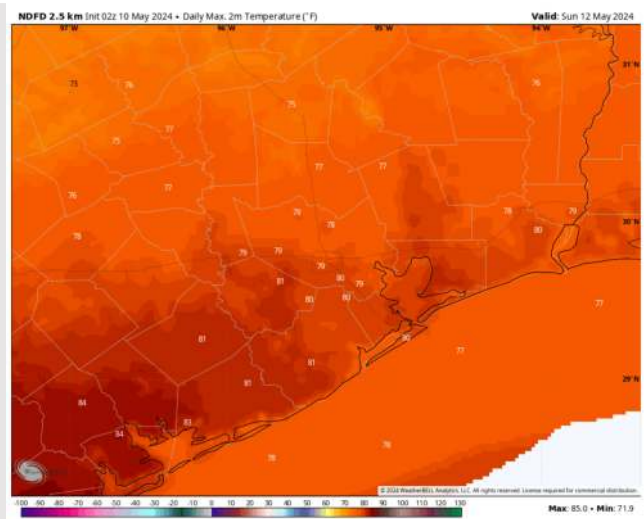
High Temps: **N of Morgan's Point:** Upper 70s-Near 80 F. **S of Morgan's Point:** Upper 70s F.

Visibility: Not favoring any fog concerns Sunday, however visibilities can be reduced under heavy downpours.

Precip Image: 2 PM CT



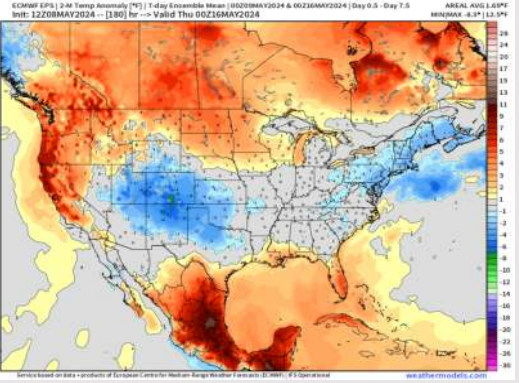
Wind Speed:
2 PM CT



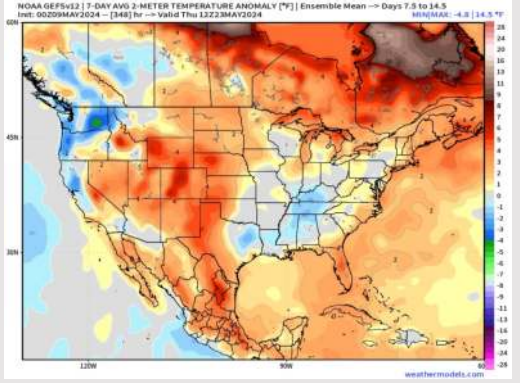
High Temps
Sunday

Houston Pilots: 5/10/24

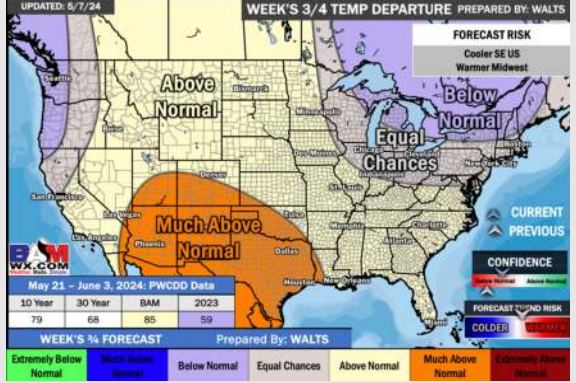
Next 7 Day Temperature Departure



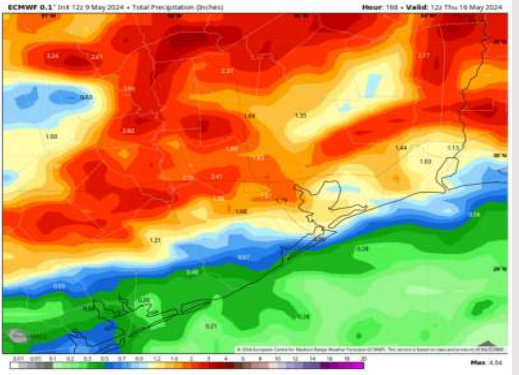
8-14 Day Temperature Departure



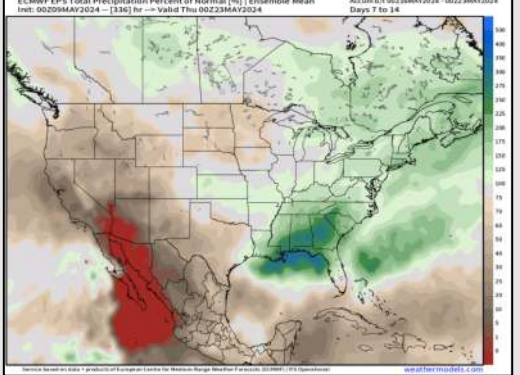
15-30 Day Temperature Departure



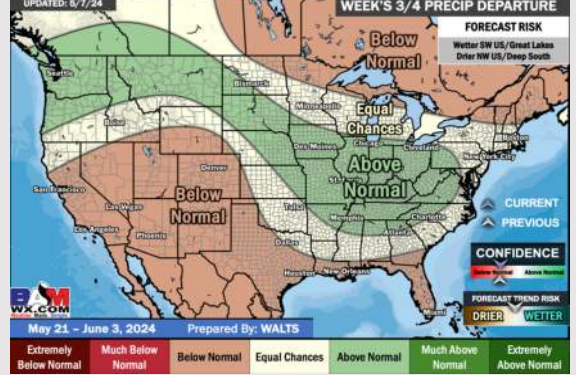
Next 7 Day Total Precipitation



8-14 Day % of Average Precip.



15-30 Day % of Average Precip.



- Rain chances to start the weekend FRI/SAT will be minor, with next best rain chances returning SUN. Temps are expected to be slightly above normal for the week 1 timeframe.
- Slightly above normal precipitation chances are at play during the week 2 timeframe. Temps are expected to be near normal.
- Below normal chances for precipitation are favored in the weeks 3/4 timeframe. Temperatures expected to be much above normal for the weeks 3 and 4 timeframe.