

Houston Pilots Forecast Package

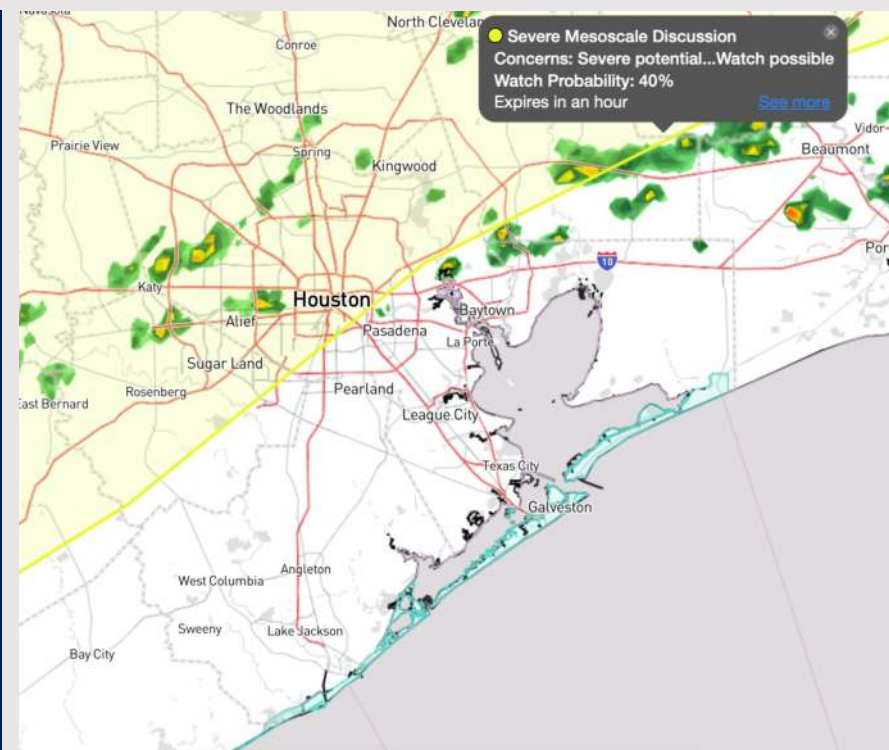


Updated: 12:25 PM CT
Monday, April 8, 2024

Forecaster: Alyssa Elliott

Weather Headlines

- A more active pattern works across the area over the next few days.
- Not anticipating a fog risk, however visibilities may be slightly reduced due to drizzle / misty conditions this evening.
- Winds gradually becoming elevated once again this afternoon and will continue over the next few days



Current Radar: 12:00 PM CT



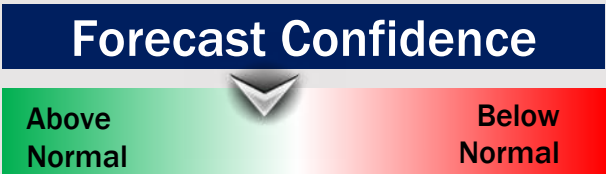
As always, please do not hesitate to reach out to us with any forecast questions via the chat option on Clarity or our on-call number, **(317)-560-8122** press 1 for forecast questions.

Houston Pilots Extended Range Visibility Report



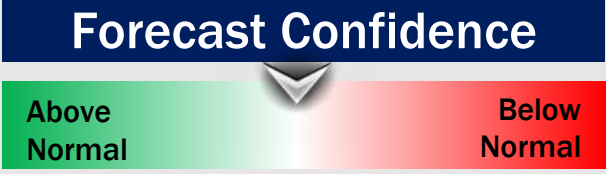
Thursday 4/11/24

Fog not favored for THU.



Friday 4/12/24

Fog not favored for FRI.



Saturday 4/13/24

Fog not favored for SAT.



Chance for Fog

Thursday AM	Unlikely
Thursday PM	Unlikely
Friday AM	Unlikely
Friday PM	Unlikely
Saturday AM	Unlikely
Saturday PM	Unlikely

Houston Pilots Visibility Chart (miles)



Forecast Confidence



Time	Mon 12pm	Mon 1pm	Mon 2pm	Mon 3pm	Mon 4pm	Mon 5pm	Mon 6pm	Mon 7pm	Mon 8pm	Mon 9pm	Mon 10pm	Mon 11pm	Tue 12am	Tue 1am	Tue 2am	Tue 3am	Tue 4am	Tue 5am	Tue 6am	Tue 7am	Tue 8am	Tue 9am	Tue 10am	Tue 11am
610 Bridge	3	4	5	6	6	6	4	4	4	5	5	5	5	5	4	4	4	4	4	2	2	3	4	5
Kinder 1	3	4	5	6	6	6	4	4	4	5	5	5	5	4	4	4	4	4	3	2	2	3	4	5
Greens Bayou	4	4	5	6	6	6	4	4	4	5	5	4	4	4	4	4	4	4	3	2	2	3	4	5
Shell Crude	4	4	5	6	6	5	4	4	4	5	5	4	4	4	4	4	4	4	3	2	2	3	4	5
Lynchburg Ferries	4	4	5	6	5	5	4	4	4	5	5	5	4	4	4	4	4	4	3	2	2	3	4	5
Exxon 3	4	4	5	6	5	5	4	4	4	5	5	4	4	4	4	4	4	4	3	2	2	3	4	5
Morgans Point	4	4	5	6	5	5	4	4	4	5	5	5	4	4	4	4	4	4	3	2	2	3	4	5
75/76	5	6	5	6	5	5	4	4	4	5	5	5	6	6	5	9	9	9	9	9	9	9	9	10
63/64	5	6	6	6	5	5	4	4	4	5	5	5	6	6	5	9	9	9	9	9	9	9	9	9
51/52	6	6	6	6	5	5	4	4	5	6	5	6	6	6	5	9	9	9	9	9	9	9	9	9
37/38	6	6	6	6	5	5	4	4	5	6	5	6	6	6	5	9	9	9	9	9	9	9	9	9
25/26	6	6	6	6	5	5	4	4	5	5	5	6	6	6	5	9	9	9	9	9	9	9	9	9
11/12	6	6	6	6	5	5	4	4	5	5	5	5	6	6	5	9	9	9	9	9	9	9	9	9
1 & 2 Bravo	6	6	5	4	4	4	4	4	4	5	4	4	4	4	4	9	9	9	9	9	9	9	9	9

NOTE: This is automated data that may/may not agree with the official BAM thinking that's found on the daily slides or special visibility report slides. This data should be used as a guide only

Houston Pilots Wind Chart



Forecast Confidence



Sustained wind 13 Knots
Gusts 18 Knots
Wind from the N

Example

WS: 13
G:18
N

Time Knots	Mon 12pm	Mon 1pm	Mon 2pm	Mon 3pm	Mon 4pm	Mon 5pm	Mon 6pm	Mon 7pm	Mon 8pm	Mon 9pm	Mon 10pm	Mon 11pm	Tue 12am	Tue 1am	Tue 2am	Tue 3am	Tue 4am	Tue 5am	Tue 6am	Tue 7am	Tue 8am	Tue 9am	Tue 10am	Tue 11am
610 Bridge	9	10	11	11	11	12	13	13	13	13	15	15	17	17	18	17	19	17	16	13	13	11	12	13
	18	21	21	22	23	25	24	26	27	27	30	30	34	33	37	36	38	35	32	27	27	22	24	26
	SSE	SSE	SSE	SSE	SSE	SE	SE	SE	SE	SE	SSE	SSE	SSE	SSE	S	S	SSE	SSE	SSE	SE	SSE	SSE	SSE	SSE
Kinder 1	9	10	11	11	11	12	13	13	13	14	15	15	17	17	18	18	19	17	16	13	13	11	12	13
	18	21	21	22	23	24	24	26	26	28	30	30	34	34	36	36	38	36	32	27	27	23	23	26
	SSE	SSE	SSE	SSE	SSE	SE	SE	SE	SE	SE	SSE	SSE	SSE	SSE	SSE	S	SSE	SSE	SSE	SE	SSE	SSE	SSE	SSE
Greens Bayou	9	10	11	12	11	13	13	13	13	13	15	15	17	17	18	17	19	17	16	13	13	12	12	13
	18	20	21	22	23	24	24	26	26	27	30	31	33	34	36	36	38	35	32	27	26	23	24	25
	SSE	SSE	SE	SE	SE	SE	SE	SE	SE	SE	SSE	SSE	SSE	SSE	S	S	SSE	SSE	SSE	SE	SSE	SSE	SSE	SSE
Shell Crude	9	10	11	11	11	12	13	13	13	13	15	15	16	16	17	17	19	17	17	14	14	13	13	13
	18	20	21	22	23	24	25	26	27	28	31	31	33	31	36	35	38	36	33	29	28	27	25	26
	SSE	SSE	SE	SE	SE	SE	SE	SE	SE	SE	SSE	SSE	SSE	SSE	S	S	SSE	SSE	SSE	SE	SSE	SSE	SSE	SSE
Lynchburg Ferries	9	11	11	13	12	13	13	13	13	15	17	16	16	16	17	17	19	17	15	13	13	12	13	13
	18	20	21	22	23	25	25	27	27	30	33	32	32	32	35	34	38	35	31	28	25	24	25	26
	SSE	SSE	SE	SE	SE	SE	SE	SE	SE	SE	SSE	SSE	SSE	SSE	S	S	SSE	SSE	SSE	SE	SSE	SSE	SSE	SSE
Exxon 3	11	12	12	13	14	15	15	16	16	17	17	17	17	17	17	19	19	19	16	15	14	15	13	13
	19	20	21	22	23	24	25	29	28	31	34	31	34	31	35	35	38	38	33	30	28	27	25	26
	SSE	SE	SE	SE	SE	SE	SE	SE	SE	SE	SSE	SSE	SSE	SSE	S	S	SSE	SSE	SSE	SE	SSE	SSE	SSE	SSE
Morgans Point	10	12	12	14	14	15	15	16	17	17	17	17	17	17	17	18	19	19	17	16	15	16	14	13
	19	20	21	23	23	25	26	29	30	31	33	31	33	31	33	37	39	38	35	32	30	29	25	26
	SE	SE	SE	SE	SE	SE	SE	SE	SE	SE	SSE	SSE	SSE	SSE	S	S	SSE	SSE	SSE	SSE	SSE	SSE	SSE	SSE
75/76	13	13	14	16	17	17	19	20	22	22	22	23	22	21	21	23	24	22	21	21	23	21	19	17
	20	21	23	24	26	27	28	30	31	32	34	32	33	32	32	34	35	35	35	33	33	31	30	29
	SE	SE	SE	SE	SE	SE	SE	SE	SE	SE	SSE	SSE	SSE	SSE	S	S	SSE	SSE	SSE	SSE	SSE	SSE	SSE	SSE
63/64	12	13	13	15	16	17	19	19	21	21	22	23	22	20	20	22	23	22	21	19	23	21	19	17
	20	21	23	24	25	26	27	29	30	30	33	33	34	32	32	34	33	35	35	33	33	30	30	30
	SE	SE	SE	SE	SE	SE	SE	SE	SE	SE	SSE	SSE	SSE	SSE	S	S	SSE	SSE	SSE	SSE	SSE	SSE	SSE	SSE
51/52	11	12	13	14	15	16	17	19	20	21	21	23	23	21	19	21	20	19	20	20	22	21	19	16
	19	20	22	23	23	24	26	29	30	30	33	33	35	31	32	32	30	30	32	33	33	30	30	30
	SSE	SE	SE	SE	SE	SE	SE	SE	SE	SE	SSE	SSE	SSE	SSE	SSE	S	S	SSE	SSE	SSE	SSE	SSE	SSE	SSE
37/38	11	11	13	14	14	15	17	18	19	21	21	22	23	21	19	20	18	18	19	19	21	20	19	17
	19	20	22	23	23	24	25	28	30	31	33	34	36	32	31	30	29	29	32	33	33	30	30	30
	SSE	SE	SE	SE	SE	SE	SE	SE	SE	SE	SE	SE	SSE	SSE	SSE	S	S	SSE	SSE	SSE	SSE	SSE	SSE	SSE
25/26	13	12	13	14	14	15	16	17	18	19	20	21	22	19	19	19	17	17	17	19	20	19	19	17
	19	20	21	22	23	24	24	26	30	30	33	33	35	32	30	29	27	28	32	32	32	30	30	30
	SSE	SE	SE	SE	SE	SE	SE	SE	SE	SE	SE	SSE	SSE	SSE	SSE	S	S	SSE	SSE	SSE	SSE	SE	SSE	SSE
11/12	12	12	13	13	14	15	15	17	17	19	19	19	19	19	17	16	14	14	15	17	18	19	18	16
	18	19	20	20	21	22	24	25	30	30	32	32	32	30	29	27	25	25	29	31	30	30	29	29
	SSE	SE	SE	SE	SE	SE	SE	SE	SE	SE	SSE	SSE	SSE	SSE	SSE	S	S	SSE	SSE	SSE	SSE	SSE	SSE	SE
1 & 2 Bravo	12	12	13	13	14	16	17	17	19	21	21	21	21	21	19	17	17	16	15	17	19	20	20	18
	18	18	20	20	21	23	25	26	30	32	34	34	32	31	29	28	28	28	28	30	32	32	30	30
	SE	SE	SE	SE	SE	SE	SE	SE	SE	SE	SE	SSE	SSE	SSE	SSE	S	SSE	SSE	SSE	SSE	SE	SE	SE	SE

NOTE: This is automated data that may/may not agree with the official BAM thinking that's found on the daily slides. This data should be used as a guide only

Houston Pilots: Mon. 4/8/2024



Forecast Discussion

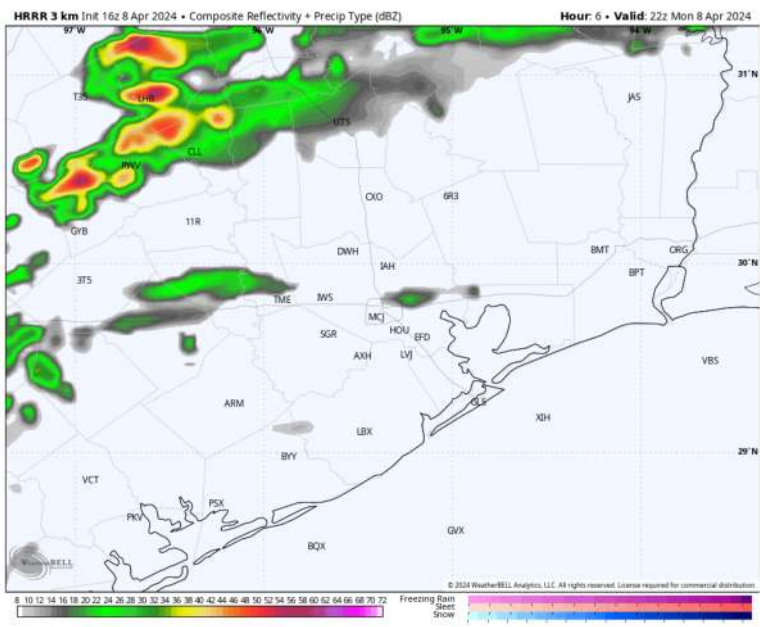
Precip: Scattered showers and storms will continue to work N of all stations through the PM. A couple scattered showers may linger near 610 Bridge until 2 PM CT. Pockets of drizzle / hazy conditions may linger beyond 2 PM for stations primarily N of Morgan's Point.

Wind: Winds out of the SE throughout the PM. **N Morgan's Point:** Winds at 10-15 kts throughout much of the evening. After 11 PM, winds will increase to 13 - 18 kts. **S of Morgan's Point:** Winds at 15 - 20 kts through 7 PM, then another increase to 20-25 kts thereafter and continue for the PM. Gusts will pick up to 30 - 40 kts at all stations after 8 PM CT.

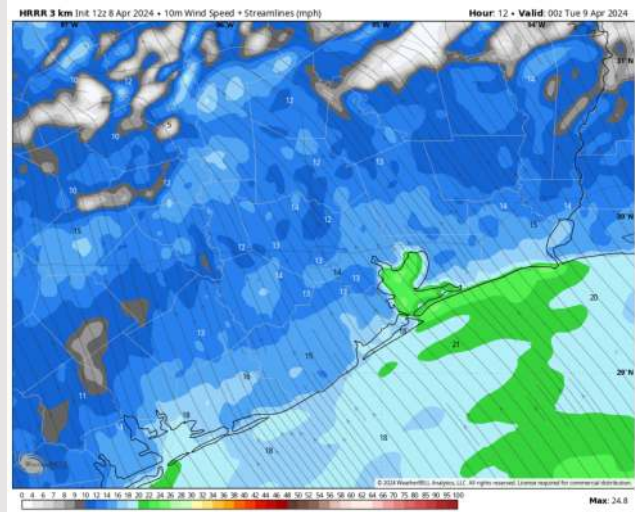
Low Temps: **N of Morgan's Point:** Low 70s **S of Morgan's Point:** Mid 70s F

Visibility: Reduced visibilities of 2-4 miles may be possible under light rain, drizzly conditions through the evening.

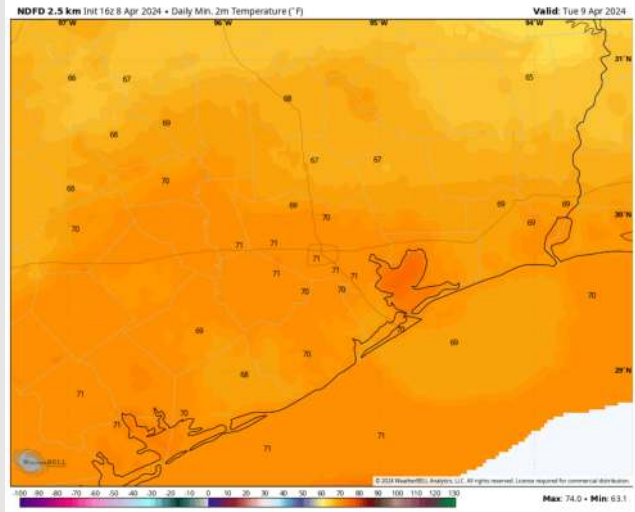
Precip Image: 5 PM CT



Wind Speed
7 PM CT



Low Temps
TUE AM



Houston Pilots: Tue. 4/9/2024



Forecast Discussion

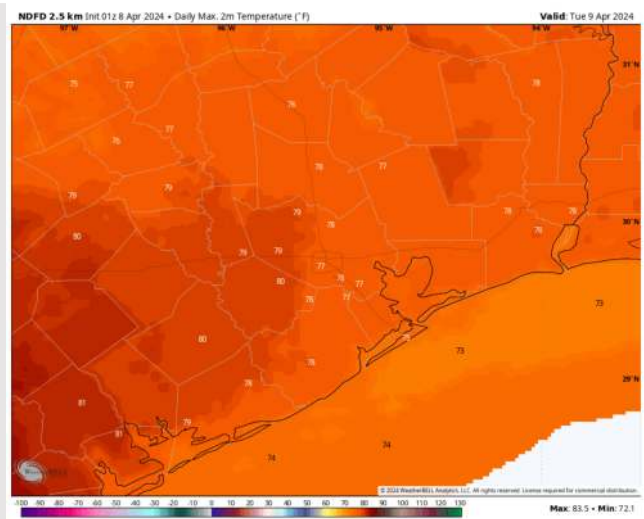
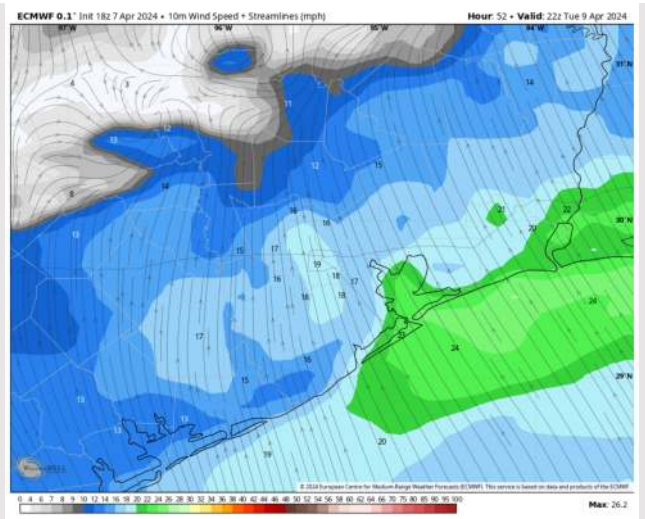
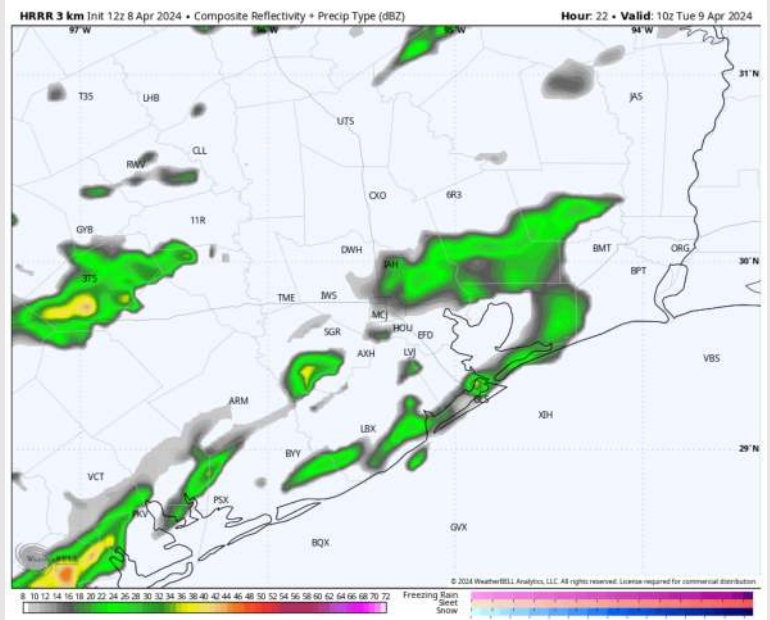
Precip: Majority of rain chances expected to remain just to the North of all Stations, however Stations can see scattered light showers at any time after 2 AM. Best chances of showers and a few thunderstorms between 4 AM through 11 AM TUE.

Wind: Winds will be out of the SE throughout Tuesday. **N Morgan's Point:** Winds at 7-12 kts through 8 AM, increasing to 12-17 kts through 7 PM, before winds return to 7-12 kts. **S of Morgan's Point:** Winds at 18-23 kts through 2 PM outside of a decrease to 14-19 kts from 2-6 PM. **Wind gusts of 30 - 35kts for Stations S of Morgan's Point throughout the day, and for Stations N between 9 AM - 6 PM.**

High Temps: **N of Morgan's Point:** Upper 70s F. **S of Morgan's Point:** Mid 70s F.

Visibility: No fog concerns favored for Tuesday with elevated winds

Precip Image: 6 AM CT



Forecast Discussion

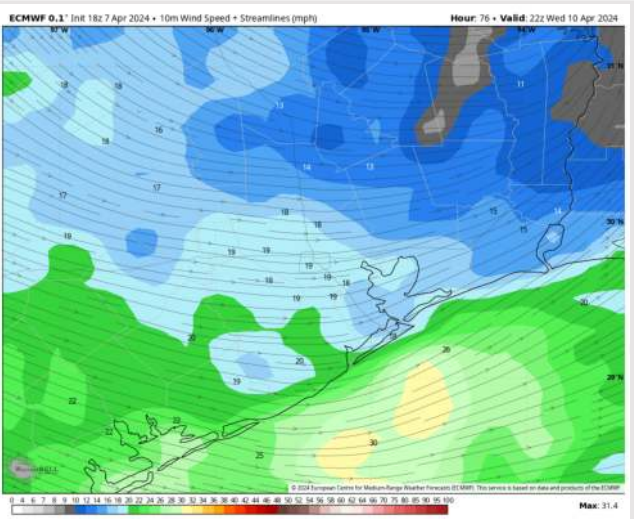
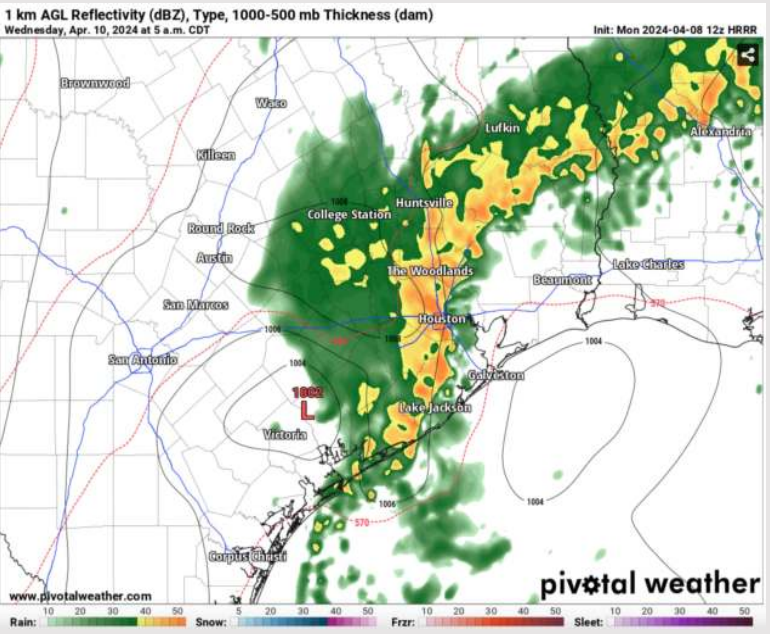
Precip: Scattered showers and storms will move through primarily through the AM hours Wednesday. Scattered storms will likely move in as early as 2 AM, however the best risk for strong to severe storms will move in from ~5 – 7 AM CT. Hail, lightning, some gusty winds possible with these storms. Need to watch for an iso tornado risk.

Wind: Winds will be out of the SE to begin before gradually veering clockwise throughout the day. Winds will be out of the SW ~7 AM CT, the W ~12 PM CT, and eventually settling out of the NW by ~8 PM CT. **N of Morgan's Point:** Winds at 9-14 kts through 4 PM before increasing to 12-17 kts the rest of the day **S of Morgan's Point:** Winds at 19-24 kts through 9 AM before decreasing to 12-17 kts. Winds increase again to 18-23 kts after 6 PM. **Wind gusts of 22-27 kts through 5 PM at all stations with increased gusts of 30-35 kts after 5 PM S of Morgan's Point.**

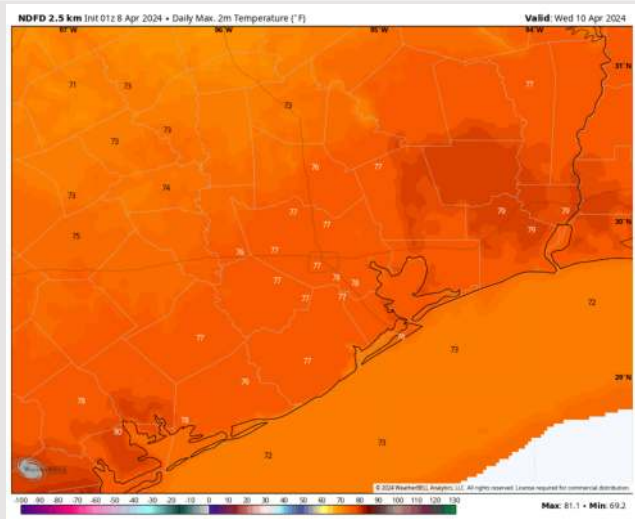
High Temps: **N of Morgan's Point:** Upper 70s F **S of Morgan's Point:** Mid 70s F

Visibility: No fog concerns at this time, however monitoring for risk of heavier storms producing reduced visibilities WED AM.

Precip Image: 5 AM CT

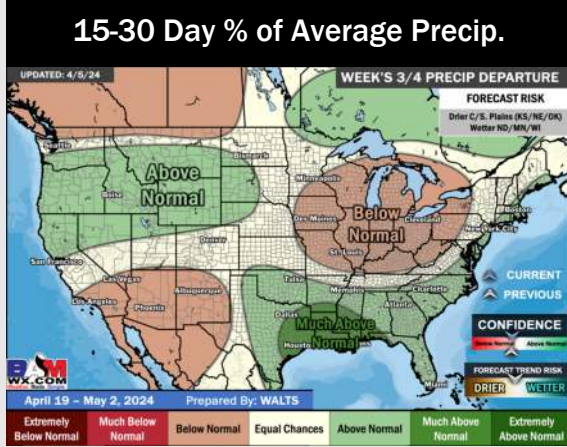
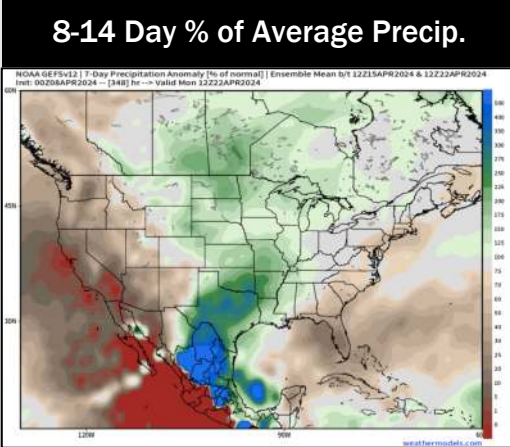
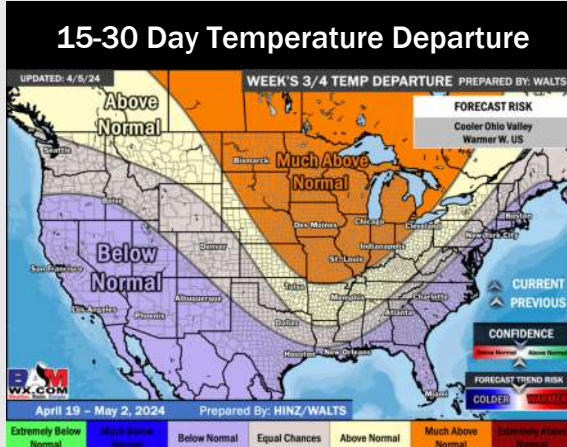
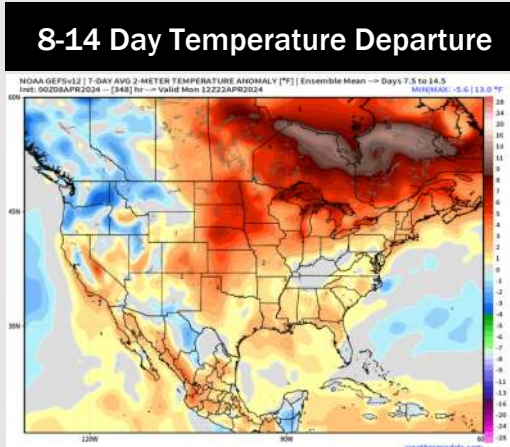
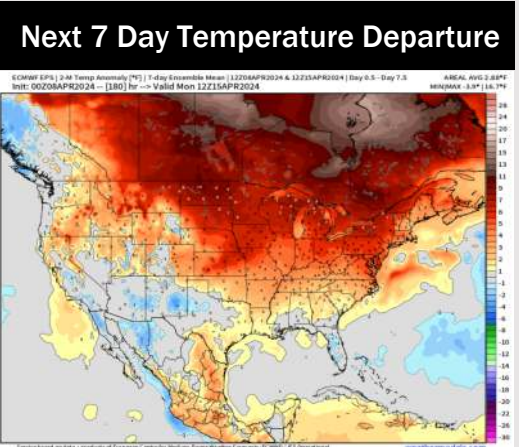


Wind Speed:
5 PM CT



High Temps
Wednesday

Houston Pilots: 4/8/24



- A more active pattern continues through WED. Temps are expected to be slightly above normal for the week 1 timeframe.
- Above normal precipitation chances are at play during the week 2 timeframe. Temps are expected to be slightly above normal.
- Much above normal chances for precipitation are favored in the weeks 3/4 timeframe. Temperatures expected to be below normal.