

Houston Pilots Forecast Package



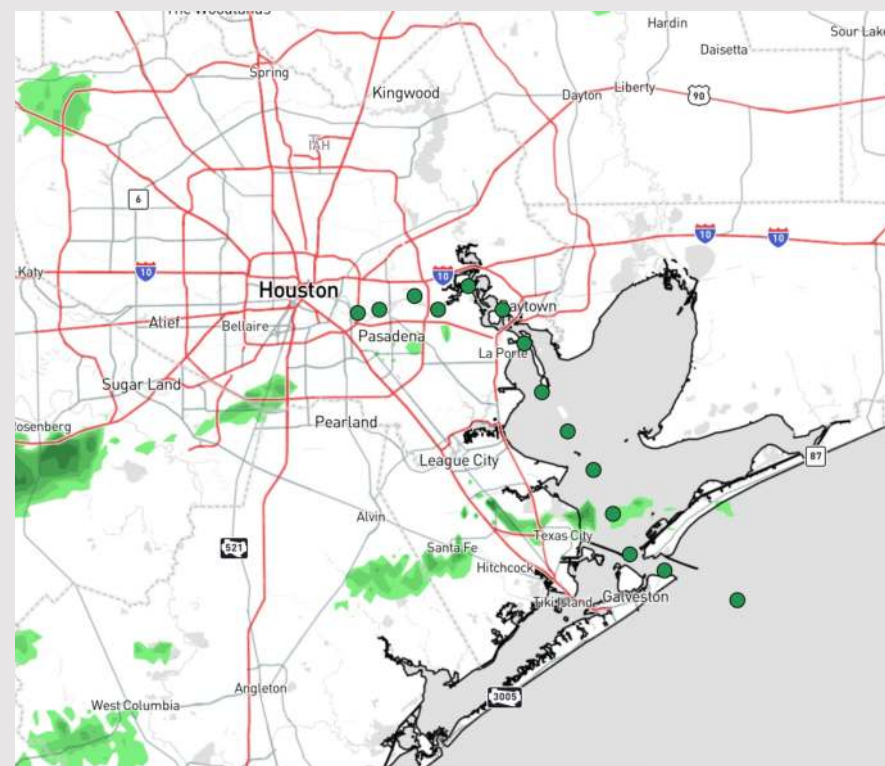
Updated: 1:50 PM CT

Wednesday, March 27, 2024

Forecaster: Alyssa Elliott

Weather Headlines

- Outside of light rain chances this PM / Drizzle Early THU AM, dry conditions are favored over the next few days.
- Gusts may reach ~28 kts at the Boarding Station this evening through 7 PM-CT. Then winds over land will calm while winds over the Gulf and Bay remain slightly elevated.
- **Not favoring fog development today, but a very low-end risk will exist for Thursday/tomorrow AM and Saturday AM.**



Current Radar: 1:20 PM CT



As always, please do not hesitate to reach out to us with any forecast questions via the chat option on Clarity or our on-call number, **(317)-560-8122** press 1 for forecast questions.

Houston Pilots Extended Range Visibility Report



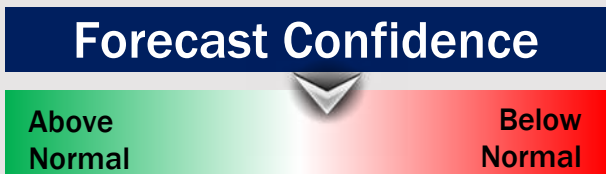
Saturday 3/30/24

Patchy Fog / Haze for the AM can't be ruled out, but lower confidence due to elevated winds.



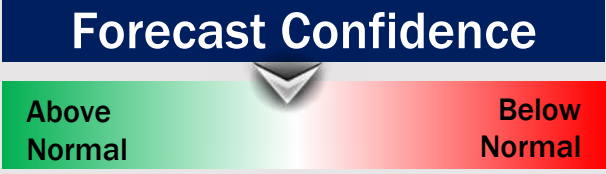
Monday 4/1/24

Fog is not favored for Monday.



Sunday 3/31/24

Fog is not favored for Sunday.



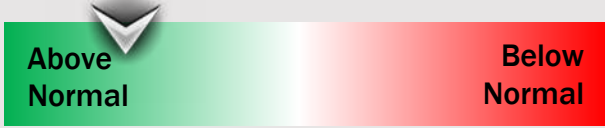
Chance for Fog

Saturday AM	Possible
Saturday PM	Unlikely
Sunday AM	Unlikely
Sunday PM	Unlikely
Monday AM	Unlikely
Monday PM	Unlikely

Houston Pilots Visibility Chart (miles)



Forecast Confidence



Time	Wed 2pm	Wed 3pm	Wed 4pm	Wed 5pm	Wed 6pm	Wed 7pm	Wed 8pm	Wed 9pm	Wed 10pm	Wed 11pm	Thu 12am	Thu 1am	Thu 2am	Thu 3am	Thu 4am	Thu 5am	Thu 6am	Thu 7am	Thu 8am	Thu 9am	Thu 10am	Thu 11am	Thu 12pm	Thu 1pm
610 Bridge	10	10	10	10	10	10	10	10	10	10	10	10	10	10	10	10	10	10	10	10	10	10	10	10
Kinder 1	10	10	10	10	10	10	10	10	10	10	10	10	10	10	10	10	10	10	10	10	10	10	10	10
Greens Bayou	10	10	10	10	10	10	10	10	10	10	10	10	10	10	10	10	10	10	10	10	10	10	10	10
Shell Crude	10	10	10	10	10	10	10	10	10	10	10	10	10	10	10	10	10	10	10	10	10	10	10	10
Lynchburg Ferries	10	10	10	10	10	10	10	10	10	10	10	10	10	10	10	10	10	10	10	10	10	10	10	10
Exxon 3	10	10	10	10	10	10	10	10	10	10	10	10	10	10	10	10	10	10	10	10	10	10	10	10
Morgans Point	10	10	10	10	10	10	10	10	10	10	10	10	10	10	10	10	10	10	10	10	10	10	10	10
75/76	10	10	10	10	10	10	10	10	10	10	10	10	10	10	10	9	9	9	10	10	10	10	10	10
63/64	10	10	10	10	10	10	10	10	10	10	10	10	10	10	10	10	9	9	10	10	10	10	10	10
51/52	10	10	10	10	10	10	10	10	10	10	10	10	10	10	10	10	10	9	10	10	10	10	10	10
37/38	10	10	10	10	10	10	10	10	10	10	10	10	10	10	10	10	10	9	10	10	10	10	10	10
25/26	10	10	10	10	10	10	10	10	10	10	10	10	10	10	10	10	10	10	10	10	10	10	10	10
11/12	10	10	10	10	10	10	10	10	10	10	10	10	10	10	10	10	10	10	10	10	10	10	10	10
1 & 2 Bravo	10	10	10	10	10	10	10	10	10	10	10	10	10	10	10	10	10	10	10	10	10	10	10	10

NOTE: This is automated data that may/may not agree with the official BAM thinking that's found on the daily slides or special visibility report slides. This data should be used as a guide only

Houston Pilots Wind Chart



Forecast Confidence



Example

Sustained wind 13 Knots
Gusts 18 Knots
Wind from the N

WS: 13
G:18
N

Time Knots	Wed 2pm	Wed 3pm	Wed 4pm	Wed 5pm	Wed 6pm	Wed 7pm	Wed 8pm	Wed 9pm	Wed 10pm	Wed 11pm	Thu 12am	Thu 1am	Thu 2am	Thu 3am	Thu 4am	Thu 5am	Thu 6am	Thu 7am	Thu 8am	Thu 9am	Thu 10am	Thu 11am	Thu 12pm	Thu 1pm
610 Bridge	6 13 NNW	7 13 NW	7 15 NW	7 14 NW	5 10 N	5 11 N	4 7 N	4 7 N	3 4 NNW	3 5 N	3 4 NNE	3 5 ENE	3 5 E	3 4 NNE	2 4 NNE	2 4 NE	3 4 NE	3 4 NE	3 4 NE	3 6 ENE	4 8 ENE	4 6 E	4 6 E	3 7 E
Kinder 1	6 13 NNW	7 13 NW	7 15 NW	7 14 NW	5 10 N	5 10 N	4 8 N	4 6 N	3 4 N	3 5 NE	3 4 ENE	3 5 E	3 5 E	2 4 NNE	2 4 NNE	2 4 NE	3 4 NE	3 4 NE	3 5 NE	3 6 ENE	4 7 E	4 7 E	4 7 E	4 7 E
Greens Bayou	7 13 NNW	7 13 NW	7 14 NW	7 14 WNW	5 10 N	5 11 N	4 8 N	4 6 N	3 5 N	3 5 N	2 4 NE	3 5 ENE	3 5 E	3 4 NNE	3 5 NNE	3 4 NE	3 5 NE	3 5 NE	3 5 NE	3 6 ENE	4 8 E	4 6 E	4 7 E	4 7 ESE
Shell Crude	7 13 NNW	7 13 NW	7 15 NW	7 14 NW	5 11 N	5 11 N	4 9 N	3 6 N	3 5 N	3 5 N	2 4 NE	3 5 ENE	3 5 E	3 5 E	3 4 NNE	3 5 NE	3 4 NE	3 6 NE	3 6 NE	3 6 ENE	4 8 ENE	4 6 E	4 7 E	4 7 ESE
Lynchburg Ferries	7 13 NNW	7 13 NW	7 15 NW	7 13 NW	5 10 NNW	5 10 N	4 8 N	3 6 N	3 5 N	3 5 N	3 5 NE	3 5 ENE	3 5 E	2 4 NE	3 4 NNE	3 4 NE	3 4 NE	3 5 NE	3 6 NE	3 6 ENE	4 8 E	4 7 E	4 7 E	3 6 ESE
Exxon 3	7 13 NNW	7 14 NW	9 16 NW	7 14 NNW	7 12 N	7 12 N	6 9 N	5 8 N	5 7 NNE	3 7 NNE	3 5 ENE	3 6 ENE	3 5 E	3 5 ENE	3 5 NE	3 5 NE	3 7 NE	3 7 NE	3 7 NE	5 8 ENE	5 9 ENE	5 8 E	5 8 E	4 8 SE
Morgans Point	7 13 NNW	7 14 NW	9 16 NW	7 15 NNW	7 12 N	7 11 N	5 10 N	5 7 N	5 7 N	3 7 NNE	3 6 NE	3 6 ENE	3 6 ENE	3 5 ENE	3 5 ENE	3 5 NE	3 5 NE	4 7 NNE	4 6 NE	5 8 ENE	5 8 ENE	5 8 E	5 8 E	5 8 ESE
75/76	9 16 NNW	11 19 NNW	13 21 NW	12 20 NNW	11 15 N	10 14 N	9 13 N	8 12 N	7 10 N	6 9 NNE	6 9 NE	6 9 ENE	6 9 ENE	6 8 ENE	5 9 ENE	6 9 NE	7 10 NE	7 10 NE	7 11 NE	8 12 ENE	8 12 ENE	7 11 E	7 11 E	5 10 ESE
63/64	9 17 NNW	11 19 NNW	13 22 NW	12 20 NNW	11 16 N	9 13 N	9 14 N	9 13 N	7 10 N	6 9 NNE	6 9 NE	6 8 ENE	6 8 ENE	5 8 ENE	5 7 ENE	6 9 ENE	7 10 ENE	7 11 ENE	7 11 ENE	8 12 ENE	8 12 ENE	7 10 E	7 10 E	5 10 ESE
51/52	11 18 NNW	14 20 NNW	15 23 NW	13 20 NNW	11 16 NNW	9 13 N	9 13 N	8 12 N	7 9 N	6 9 NNE	6 9 NE	5 8 ENE	5 8 ENE	5 7 E	5 6 ENE	5 7 NE	5 8 NE	6 9 NE	6 11 NE	7 11 ENE	7 11 ENE	7 11 E	7 11 E	6 11 ESE
37/38	12 19 N	14 21 NNW	15 24 NW	15 21 NNW	11 16 NNW	9 13 N	9 13 N	8 12 N	7 9 N	7 9 NNE	6 9 NE	5 8 ENE	5 7 ENE	5 7 E	4 6 ENE	5 7 NE	5 7 NE	5 8 NE	7 10 NE	7 11 ENE	8 11 ENE	7 11 E	7 11 E	7 11 ESE
25/26	13 19 N	14 21 NNW	16 24 NW	15 21 NNW	12 17 NNW	9 13 N	9 13 N	8 12 N	6 9 N	6 9 NNE	5 8 NE	5 7 ENE	5 6 ENE	4 5 ENE	4 6 ENE	4 7 NE	5 7 NE	5 8 NE	5 9 NE	7 11 ENE	7 11 ENE	7 11 E	7 11 E	7 12 E
11/12	13 19 N	13 19 NNW	15 22 NW	15 21 NNW	11 16 N	8 12 N	7 11 N	7 10 N	5 9 N	5 8 NNE	4 7 NE	4 6 ENE	3 5 E	3 4 E	3 4 E	3 4 NE	4 6 NE	5 7 NE	5 8 NE	7 9 ENE	7 10 ENE	7 11 E	7 12 E	8 11 E
1 & 2 Bravo	13 18 N	13 19 NNW	16 23 NW	17 24 NNW	13 20 N	11 15 N	9 13 N	9 13 N	9 13 N	8 12 NNE	8 12 NE	7 10 ENE	7 10 ENE	6 9 ENE	6 9 ENE	6 8 NE	6 9 NE	7 10 NE	7 11 NE	8 12 ENE	8 13 ENE	9 13 E	9 13 E	8 12 E

NOTE: This is automated data that may/may not agree with the official BAM thinking that's found on the daily slides. This data should be used as a guide only

Houston Pilots: Wed. 3/27/2024



Forecast Discussion

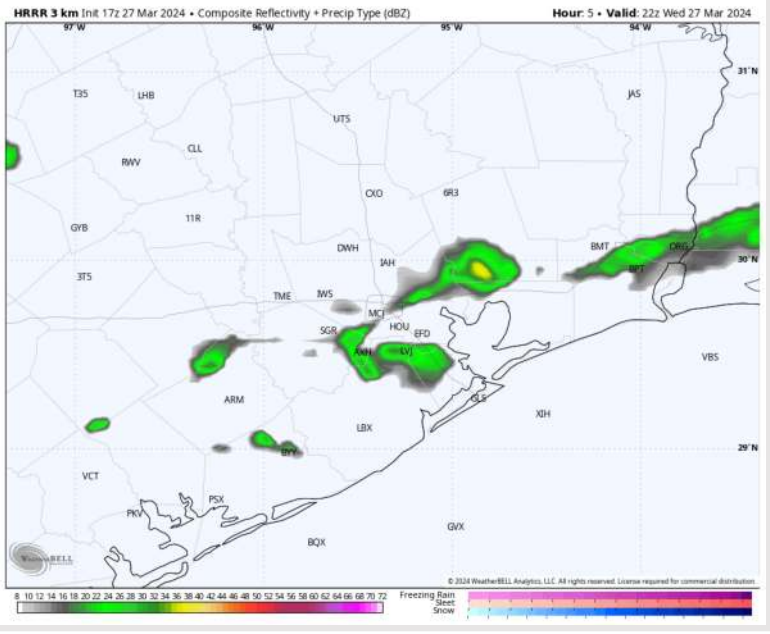
Precip: Scattered showers will continue to be a risk through ~7 PM-Ct this evening. Then anticipating a dry rest of the day.

Wind: Winds will be out of the N/NE through 6 PM for all stations, after 6 PM, winds N of Morgan's Point will become more variable, before winds at all stations shift out of the ENE by 10-11 PM. **N Morgan's Point:** Winds 3 – 8 kts for the rest of the day. **S of Morgan's Point:** Winds to at 13 – 18 kts through 7 PM, then winds drop to 8 – 13 kts for the evening. Gusts of ~28 kts cannot be ruled out for the Boarding Station through 7 PM-CT.

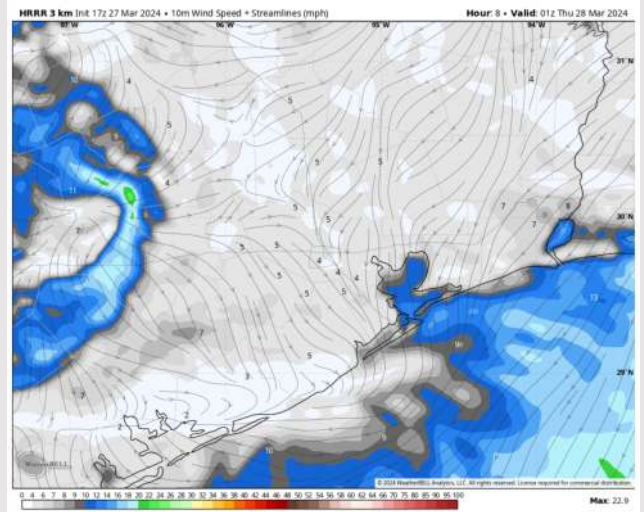
Low Temps: **N of Morgan's Point:** Low 50s F. **S of Morgan's Point:** Upper 50s F to Low 60s F

Visibility: No fog concerns for the rest of the day.

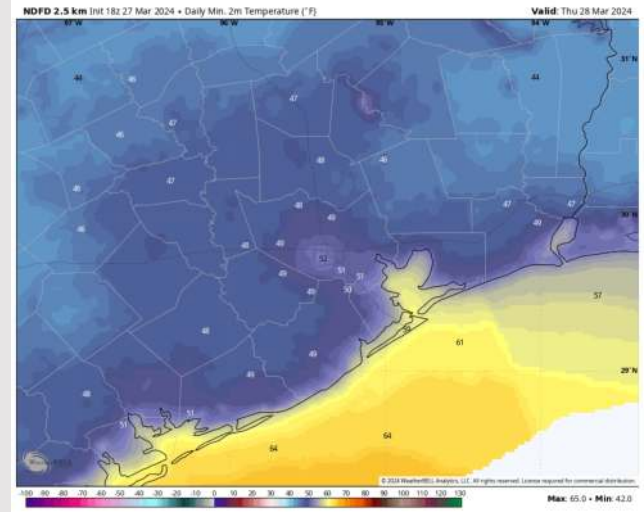
Precip Image: 10 PM CT



Wind Speed
8 PM CT



Low Temps
THU AM



Houston Pilots: Thu. 3/28/2024



Forecast Discussion

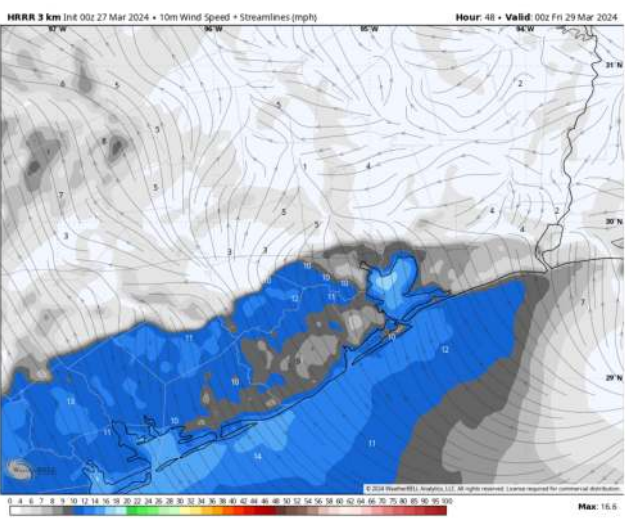
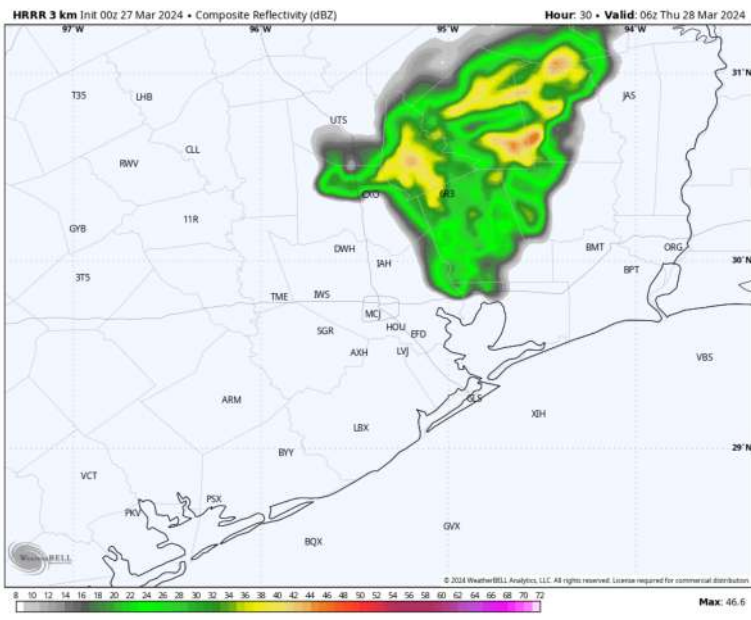
Precip: Outside of an isolated shower or two through 3AM (20%), favoring dry conditions for Thursday.

Wind: Winds will start out variable before being out of the NW by 6 AM. From 6 AM to 5 PM, winds will gradually veer clockwise before settling out of the S beyond 7 PM. **N Morgan's Point:** Winds at 3-8 kts the entire day. **S of Morgan's Point:** Winds at 4-9 kts through 7 PM before increasing to 7-12 kts the rest of the evening.

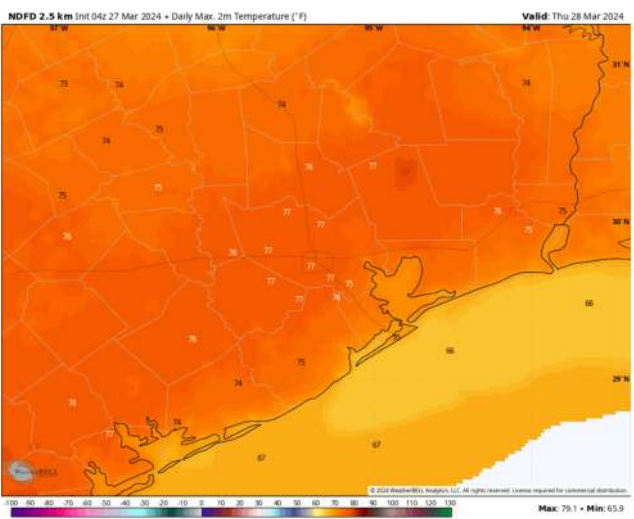
High Temps: **N of Morgan's Point:** Mid/Upper 70s F. **S of Morgan's Point:** Upper 60s F/Near 70 F.

Visibility: Latest data suggesting higher wind speeds / increased cloud cover. Therefore, patchy fog chances very low. If there is reduced visibility, favoring risk to set up W. of stations where winds are calm.

Precip Image: 1 AM CT



Wind Speed:
7 PM CT



High Temps
Thursday

Houston Pilots: Fri. 3/29/2024



Forecast Discussion

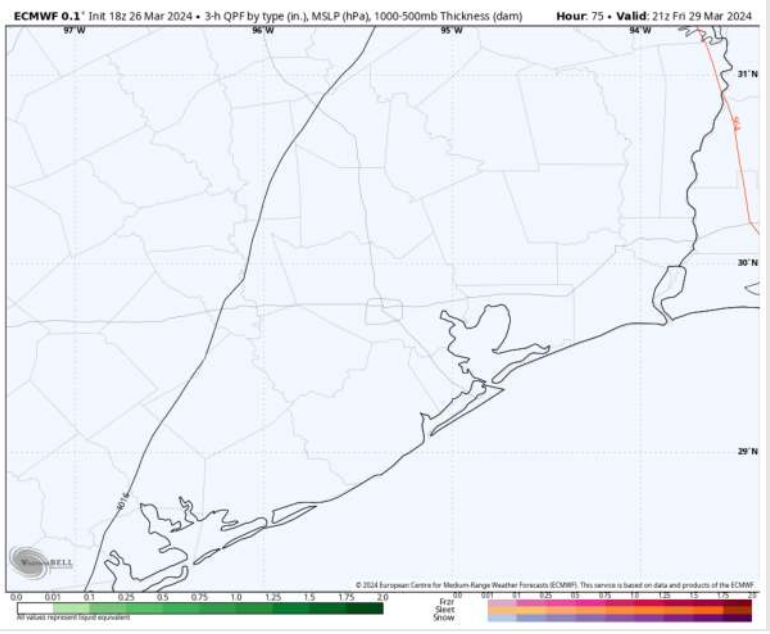
Precip: Favoring dry conditions for Friday.

Wind: Brisk winds out of the SE will continue to shift out of the NW throughout the PM. **N of Morgan's Point:** Winds at 3-8 kts through 10AM before increasing to 7 – 12kts for the remainder of the day. **S of Morgan's Point:** Winds at 8 – 13 kts through 10 AM, before increasing to 13 – 18 kts for the remainder of the day. **Gusts of up to 25kts can't be ruled out for 11/12 and the boarding station beyond 7PM.**

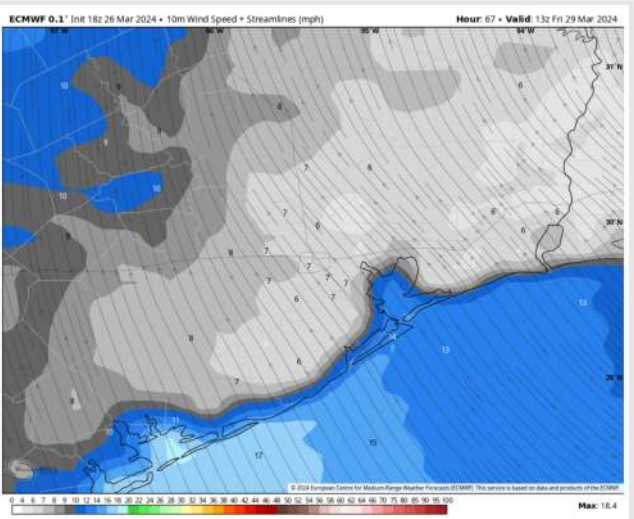
High Temps: **N of Morgan's Point:** Upper 70s F. **S of Morgan's Point:** Upper 60s F – Lower 70s

Visibility: Fog concerns not favored for Friday.

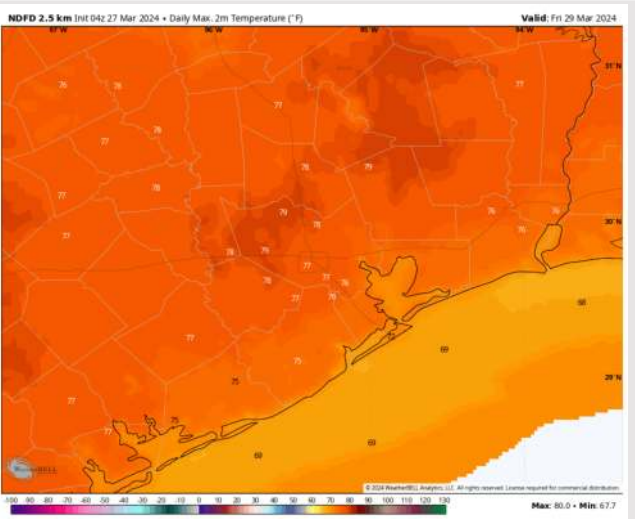
Precip Image: 4 PM CT



Wind Speed:
8 AM CT



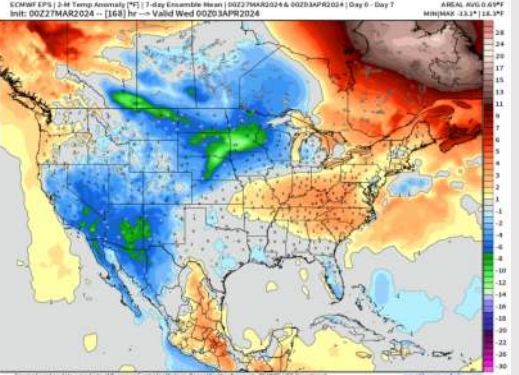
High Temps
Friday



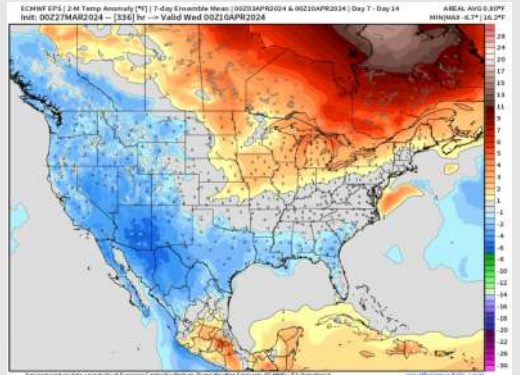
Houston Pilots: 3/27/24



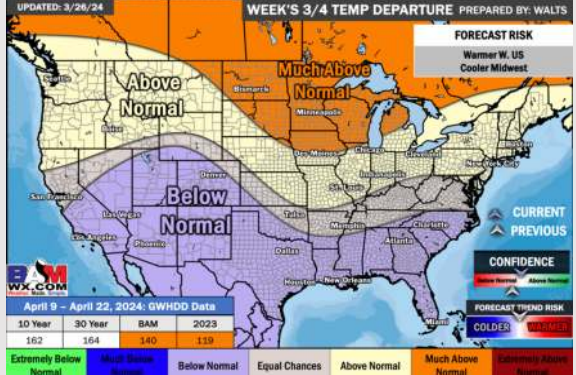
Next 7 Day Temperature Departure



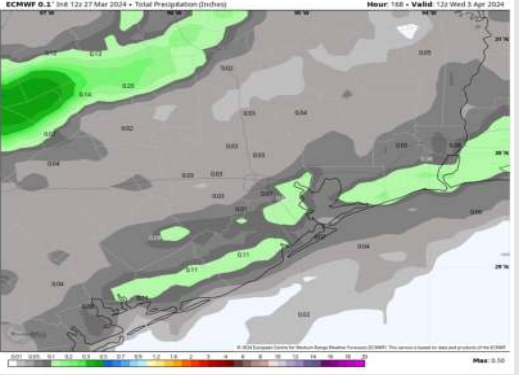
8-14 Day Temperature Departure



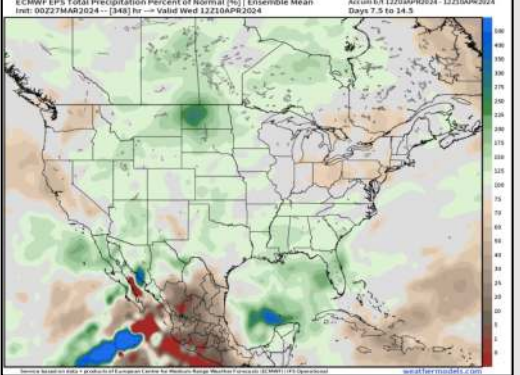
15-30 Day Temperature Departure



Next 7 Day Total Precipitation



8-14 Day % of Average Precip.



15-30 Day % of Average Precip.



- Outside of the showers / light rain this PM, a drier week is anticipated. Temps are expected to be below normal / seasonable to end March.
- Seasonable to slightly above normal precipitation chances are at play during the week 2 timeframe. Temps are expected to be below normal.
- Slightly above normal chances for precipitation are favored in the weeks 3/4 timeframe. Temperatures expected to be below normal.