

# Houston Pilots Forecast Package



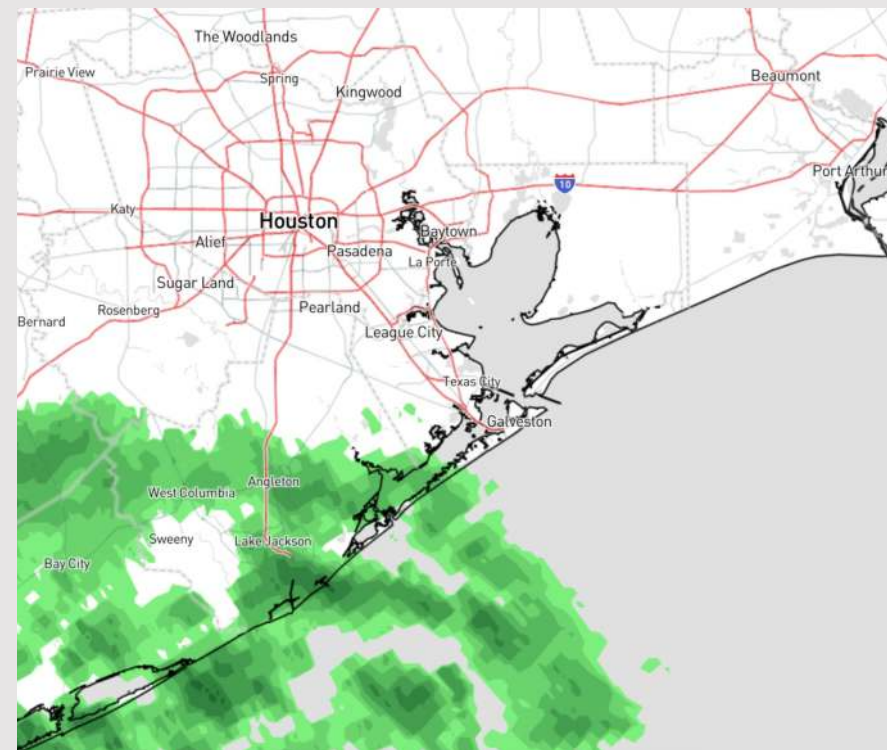
Updated: 2:00 PM CT

Tuesday, March 19, 2024

Forecaster: Alyssa Elliott

## Weather Headlines

- Today and tomorrow will be quieter with scattered showers and storms entering Thu + Fri
- Winds fairly calm this evening with gusts picking up Thursday.
- **No fog concerns over the next few days.**



**Current Radar: 2:00 PM CT**



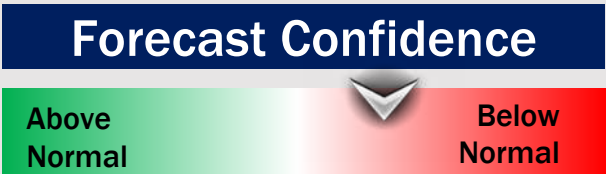
As always, please do not hesitate to reach out to us with any forecast questions via the chat option on Clarity or our on-call number, **(317)-560-8122** press 1 for forecast questions.

# Houston Pilots Extended Range Visibility Report



## Friday 3/22/24

Would need to monitor Friday AM for a chance at fog as there is a slight inversion or stable atmosphere with moisture present.



## Sunday 3/24/24

Need to monitor for a low-end risk for fog SUN AM with winds out of the SE.



## Saturday 3/23/24

Fog is not likely for Saturday



## Chance for Fog

Friday AM	Possible
Friday PM	Unlikely
Saturday AM	Unlikely
Saturday PM	Unlikely
Sunday AM	Possible
Sunday PM	Unlikely

# Houston Pilots Visibility Chart (miles)



## Forecast Confidence



Time	Tue 2pm	Tue 3pm	Tue 4pm	Tue 5pm	Tue 6pm	Tue 7pm	Tue 8pm	Tue 9pm	Tue 10pm	Tue 11pm	Wed 12am	Wed 1am	Wed 2am	Wed 3am	Wed 4am	Wed 5am	Wed 6am	Wed 7am	Wed 8am	Wed 9am	Wed 10am	Wed 11am	Wed 12pm	Wed 1pm
610 Bridge	10	10	10	10	10	10	10	10	10	10	10	10	10	10	10	10	10	10	10	10	10	10	10	10
Kinder 1	10	10	10	10	10	10	10	10	10	10	10	10	10	10	10	10	10	10	10	10	10	10	10	10
Greens Bayou	10	10	10	10	10	10	10	10	10	10	10	10	10	10	10	10	10	10	10	10	10	10	10	10
Shell Crude	10	10	10	10	10	10	10	10	10	10	10	10	10	10	10	10	10	10	10	10	10	10	10	10
Lynchburg Ferries	10	10	10	10	10	10	10	10	10	10	10	10	10	10	10	10	10	10	10	10	10	10	10	10
Exxon 3	10	10	10	10	10	10	10	10	10	10	10	10	10	10	10	10	10	10	10	10	10	10	10	10
Morgans Point	10	10	10	10	10	10	10	10	10	10	10	10	10	10	10	10	10	10	10	10	10	10	10	10
75/76	10	10	10	10	10	10	10	10	10	10	10	10	10	10	10	10	10	10	10	10	10	10	10	10
63/64	10	10	10	10	10	10	10	10	10	10	10	10	10	10	10	10	10	10	10	10	10	10	10	10
51/52	10	10	10	10	10	10	10	10	10	10	10	10	10	10	10	10	10	10	10	10	10	10	10	10
37/38	10	10	10	10	10	10	10	10	10	10	10	10	10	10	10	10	10	10	10	10	10	10	10	10
25/26	10	10	10	10	10	10	10	10	10	10	10	10	10	10	10	10	10	10	10	10	10	10	10	10
11/12	10	10	10	10	10	10	10	10	10	10	10	10	10	10	10	10	10	10	10	10	10	10	10	10
1 & 2 Bravo	10	10	10	10	10	10	10	10	10	10	10	10	10	10	10	10	10	10	10	10	10	10	10	10

**NOTE: This is automated data that may/may not agree with the official BAM thinking that's found on the daily slides or special visibility report slides. This data should be used as a guide only**

# Houston Pilots Wind Chart



## Forecast Confidence



Sustained wind 13 Knots  
Gusts 18 Knots  
Wind from the N

## Example

WS: 13  
G:18  
N

Time Knots	Tue 2pm	Tue 3pm	Tue 4pm	Tue 5pm	Tue 6pm	Tue 7pm	Tue 8pm	Tue 9pm	Tue 10pm	Tue 11pm	Wed 12am	Wed 1am	Wed 2am	Wed 3am	Wed 4am	Wed 5am	Wed 6am	Wed 7am	Wed 8am	Wed 9am	Wed 10am	Wed 11am	Wed 12pm	Wed 1pm
610 Bridge	4 6 SE	4 7 SSE	5 6 SSE	5 8 SSE	7 10 SSE	6 10 SSE	5 9 SSE	5 8 S	5 8 S	4 8 S	3 7 SSW	3 5 SSW	2 4 S	2 3 S	1 3 SSW	1 2 S	1 2 SE	2 3 ESE	1 4 ESE	3 4 ESE	4 8 SE	5 9 SE	5 10 SE	6 10 SE
Kinder 1	4 7 SE	4 7 SSE	5 6 SSE	5 8 SSE	7 10 SSE	6 10 SSE	5 9 S	5 8 S	5 8 S	4 8 SSW	3 7 SSW	3 5 S	2 4 S	2 4 SSW	1 3 SW	1 2 SSW	1 2 ESE	1 3 ESE	2 4 ESE	3 5 ESE	4 8 SE	5 9 SE	6 10 SE	6 10 SE
Greens Bayou	4 7 SE	4 7 SE	5 7 SE	5 9 SE	7 11 SE	6 10 SSE	5 9 SSE	5 8 S	5 8 S	4 7 S	3 6 SSW	3 6 SSW	3 4 SSW	2 4 SSW	1 3 SW	1 2 SSW	1 2 ESE	1 3 ESE	2 4 ESE	3 5 ESE	4 8 SE	5 9 SE	6 10 SE	6 10 SE
Shell Crude	5 7 SE	5 7 SE	5 8 SE	6 9 SE	7 11 SE	6 10 SSE	5 9 SSE	5 8 S	4 8 S	4 7 S	3 6 SSW	3 6 SSW	2 4 SSW	2 4 SSW	2 4 SW	1 2 SSW	1 2 ESE	1 3 ESE	2 4 ESE	3 5 ESE	4 8 SE	5 10 SE	6 10 SE	6 10 SE
Lynchburg Ferries	4 7 SSE	4 7 SSE	5 8 SSE	6 10 SSE	7 11 SSE	6 11 SSE	5 9 SSE	5 8 S	4 7 S	4 7 S	3 7 SSW	3 5 SSW	3 5 SSW	2 4 SSW	2 4 SW	1 2 SSW	1 2 SSE	1 4 ESE	2 4 ESE	3 5 ESE	4 8 SE	5 9 SE	6 10 SE	6 10 SE
Exxon 3	5 9 SE	5 9 SE	7 10 SE	7 11 SSE	7 11 SSE	7 11 SSE	7 10 SSE	6 9 S	6 9 S	5 9 S	4 7 SSW	3 7 SSW	3 5 SSW	2 4 SSW	2 4 SW	1 3 SSW	1 2 SE	2 4 SE	2 4 ESE	3 6 ESE	4 8 ESE	5 9 ESE	6 10 ESE	6 11 ESE
Morgans Point	5 9 SE	5 9 SE	7 9 SE	7 11 SE	7 11 SSE	7 11 SSE	7 9 SSE	6 9 S	6 9 S	5 9 S	4 7 SSW	3 7 SSW	3 5 SW	2 4 SW	2 4 WSW	2 3 SW	1 2 SSW	2 4 SE	3 4 ESE	3 7 ESE	4 8 ESE	5 9 ESE	6 10 ESE	7 11 ESE
75/76	5 11 SE	7 12 SE	8 12 SE	9 14 SE	11 15 SSE	11 16 SSE	10 14 SSE	9 13 SSE	8 12 S	8 12 S	7 11 S	6 9 SSW	5 7 SSW	4 6 SSW	3 5 SW	3 4 SSW	3 4 SSE	3 5 SE	4 6 ESE	6 8 ESE	7 10 ESE	8 12 ESE	8 13 ESE	8 13 ESE
63/64	5 10 ESE	7 11 ESE	8 12 ESE	9 13 ESE	9 14 SSE	10 14 SSE	9 13 SSE	9 11 S	7 10 S	7 10 S	7 11 SSW	6 6 SSW	5 6 SSW	4 6 SSW	3 5 SW	3 4 SSW	2 4 S	3 5 SSE	3 5 SE	5 8 ESE	6 10 ESE	7 12 ESE	8 13 ESE	7 13 ESE
51/52	6 10 ESE	7 11 ESE	7 11 ESE	8 11 ESE	8 12 SSE	8 12 SSE	8 10 SSE	7 9 S	7 9 S	6 9 S	6 8 SSW	5 8 SSW	4 6 SSW	3 5 SSW	3 4 SSW	2 3 S	1 3 SSE	2 4 SE	3 6 SE	5 8 ESE	6 10 ESE	7 11 ESE	8 13 ESE	9 13 ESE
37/38	7 10 ESE	7 11 ESE	7 11 ESE	8 11 ESE	8 11 SSE	8 11 SSE	7 10 SSE	7 9 S	7 9 S	6 8 S	6 8 S	5 8 SSW	4 6 SSW	3 4 SSW	3 4 SSW	1 3 S	1 3 SSE	2 4 SE	3 6 SE	5 8 ESE	6 10 ESE	7 11 ESE	8 13 ESE	9 13 ESE
25/26	7 11 ESE	7 11 ESE	7 11 ESE	8 11 ESE	7 11 SSE	7 11 SSE	7 10 SSE	6 8 S	6 8 S	6 8 S	5 7 SSW	5 7 SSW	4 5 SSW	3 4 SSW	2 3 S	1 3 SSE	1 3 SE	2 4 SE	3 6 ESE	5 8 ESE	6 9 ESE	7 11 ESE	8 13 ESE	9 13 ESE
11/12	7 11 ESE	7 11 ESE	7 10 ESE	7 11 ESE	6 9 SE	6 9 SE	5 8 SSE	5 8 SSE	5 8 S	5 8 S	4 7 S	4 7 S	3 5 S	2 4 SSW	2 4 SSW	1 4 S	1 4 SSE	2 4 SE	3 6 ESE	4 8 ESE	5 9 ESE	7 11 ESE	9 13 ESE	9 13 ESE
1 & 2 Bravo	8 12 E	7 11 ESE	7 10 ESE	7 11 ESE	7 10 SE	7 11 SE	7 10 SE	7 10 SSE	7 11 SSE	7 10 SSE	7 10 S	6 9 S	5 8 S	5 6 S	5 6 S	4 4 S	3 4 SSE	3 4 SSE	4 5 SE	4 6 SE	5 8 ESE	7 10 ESE	9 13 ESE	9 13 ESE

NOTE: This is automated data that may/may not agree with the official BAM thinking that's found on the daily slides. This data should be used as a guide only

## Forecast Discussion

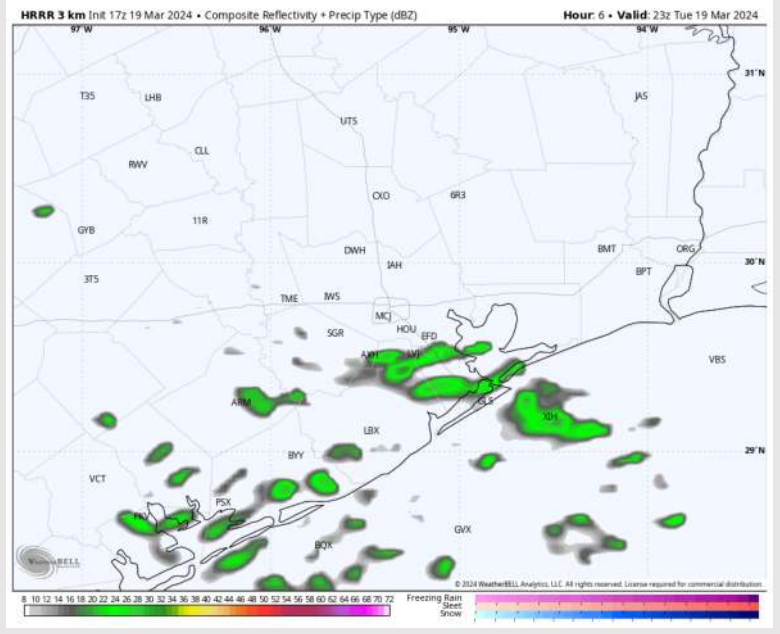
**Precip:** Favoring dry conditions the rest of the day outside of light drizzle after 6 PM.

**Wind:** Winds out of the SE for the rest of the day. Winds continue a slow shift in the PM and will be from the S by 12 AM. **N Morgan's Point:** Winds expected to remain at 5 - 10 kts throughout the day. **S of Morgan's Point:** Winds will sit 7 - 12 kts for the rest of the PM, the greatest risk for sustained winds near 12 kts being within the Bay. **Wind gusts this evening may reach up to 15 kts.**

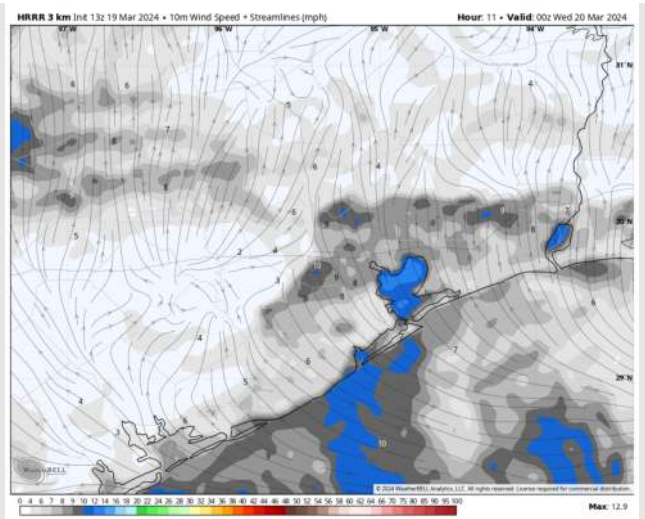
**Low Temps:** **N of Morgan's Point:** Mid 50's F. **S of Morgan's Point:** Upper 50's F.

**Visibility:** Not anticipating fog concerns for the rest of today.

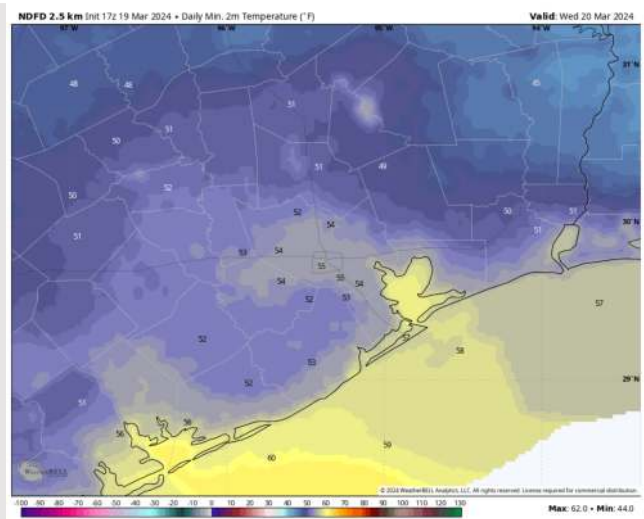
## Precip Image: 6 PM CT



Wind Speed:  
7 PM CT



Low Temps  
WED AM



# Houston Pilots: Wed. 3/20/2024



## Forecast Discussion

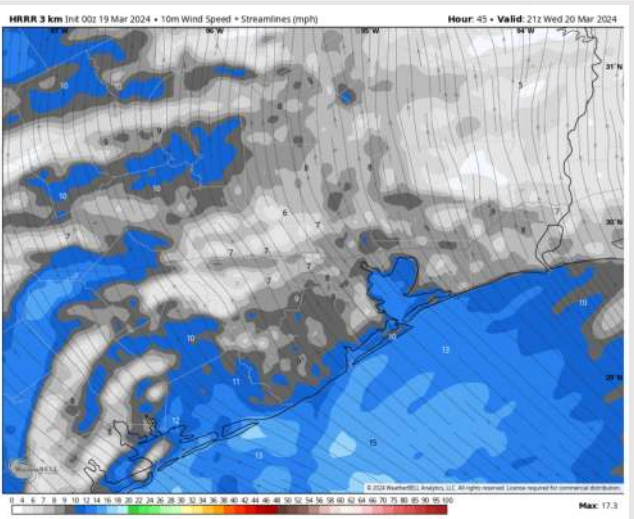
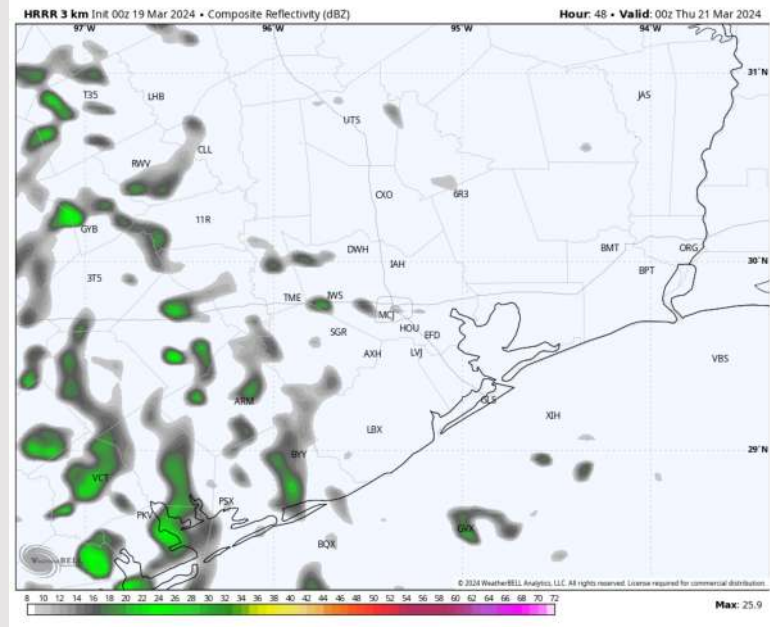
**Precip:** Isolated pockets of drizzle will be in play throughout the day (~10%) on Wednesday, however most stations will see predominantly dry conditions

**Wind:** Winds out of the SSE to SE throughout Wednesday. **N of Morgan's Point:** Near-calm at 2 - 5 kts prior to 11 AM, increasing to 4 - 9 kts thereafter. **S of Morgan's Point:** 3 - 7 kts prior to 2 PM, increasing to 7 - 12 kts at 2 PM and continuing at that clip for the PM.

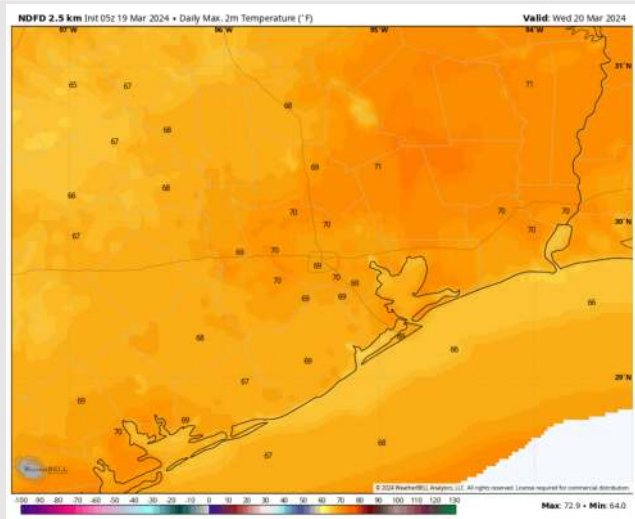
**High Temps:** **N of Morgan's Point:** Near 70 F. **S of Morgan's Point:** Mid to Upper 60s F

**Visibility:** Fog concerns not favored for Wednesday.

## Precip Image: 7 PM CT



Wind Speed:  
4 PM CT



High Temps  
Wednesday

# Houston Pilots: Thu. 3/21/2024



## Forecast Discussion

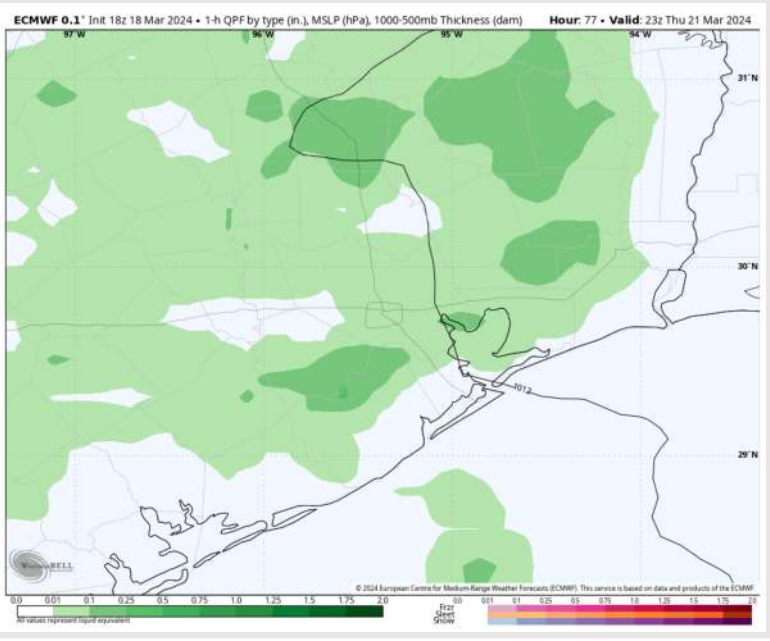
**Precip:** Scattered light showers/storms will work their way into the area Thursday morning, with coverage increasing throughout the PM hours. **Stronger storms will be able to produce wind gusts of 30-40 kts.**

**Wind:** Winds out of the SE throughout Thursday. **N Morgan's Point:** 4-9 kts through 10 AM before increasing to 7-12 kts through 8 PM. Winds then decrease again to 4-9 kts the rest of the PM. **S of Morgan's Point:** 7-12 kts throughout the day outside of a slight increase to 9-15 kts from 2-7 PM. **Wind gusts of up to 22-27 kts will be possible during the PM hours, with stronger gusts of 30-40 kts under stronger storms.**

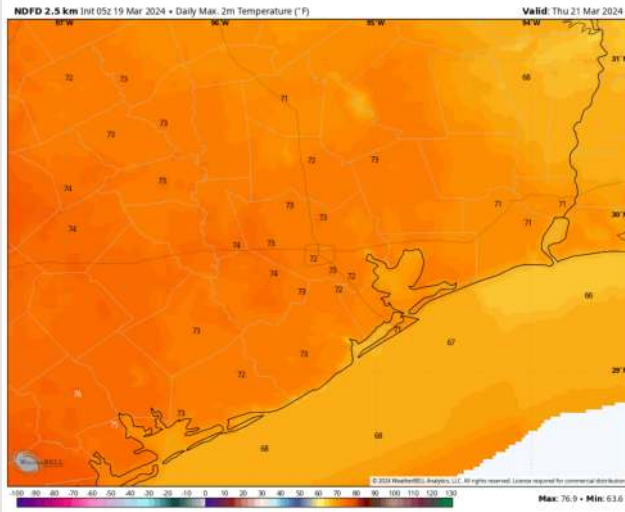
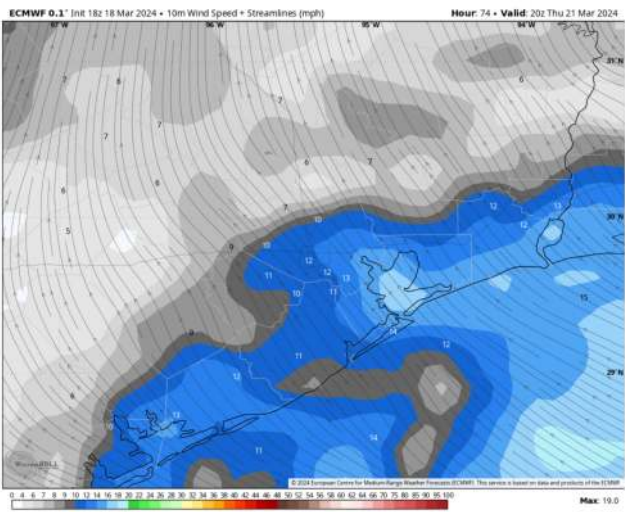
**High Temps N of Morgan's Point** Low 70s F **S of Morgan's Point:** Mid to Upper 60s F

**Visibility:** No fog concerns for Thursday, however reduced visibilities under heavier cells will be possible.

## Precip Image: 6 PM CT

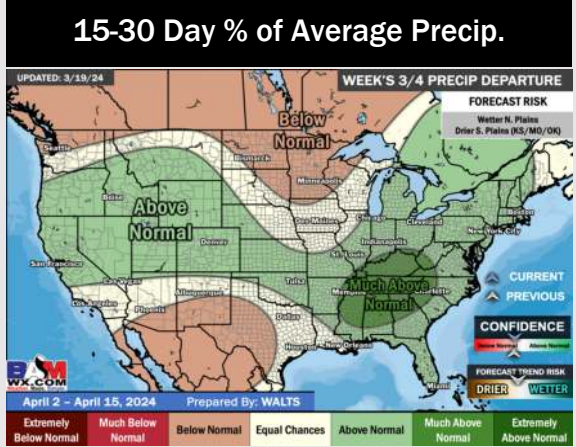
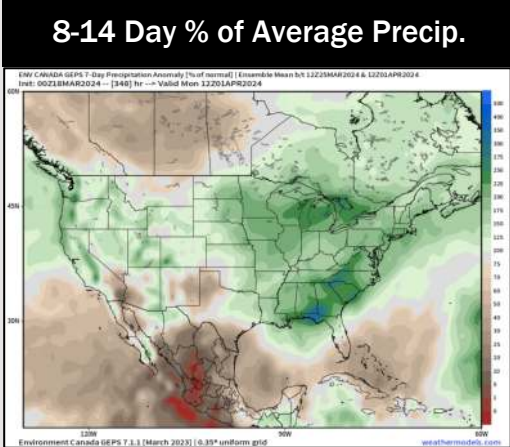
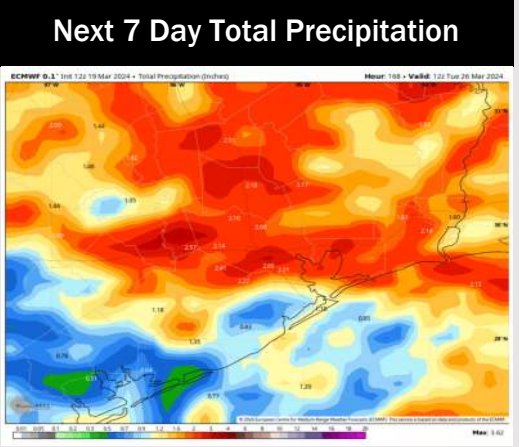
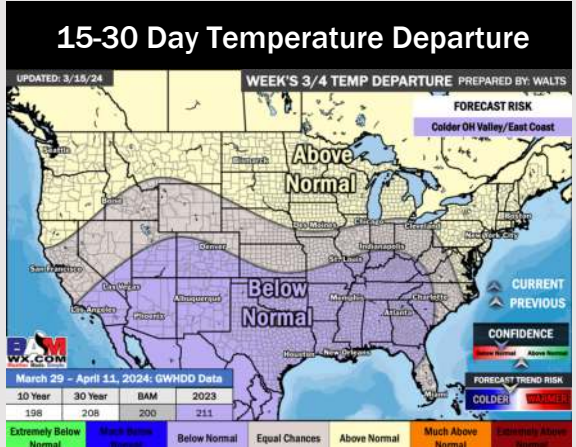
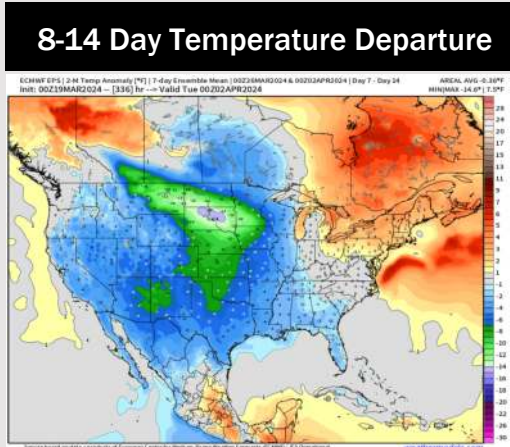
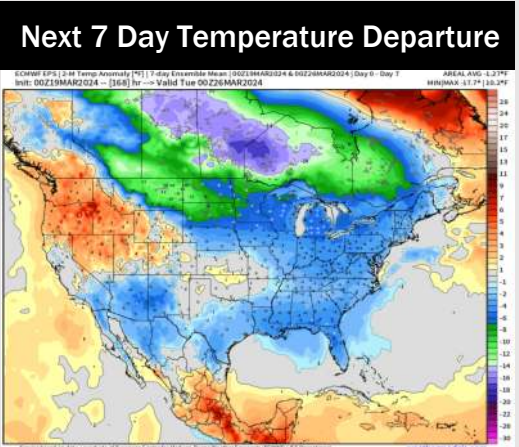


Wind Speed  
3 PM CT



High Temps  
Thursday

# Houston Pilots: 3/19/24



- Favoring dry conditions through the first half of the week. Precipitation chances to work back in starting Thursday. Temps expected to be below normal.
- Slightly above normal / new seasable precipitation chances are at play during the week 2 timeframe. Temps continue to be below normal.
- Below normal temperatures and seasonable chances for precipitation are favored in the weeks 3/4 timeframe.