

Houston Pilots Forecast Package



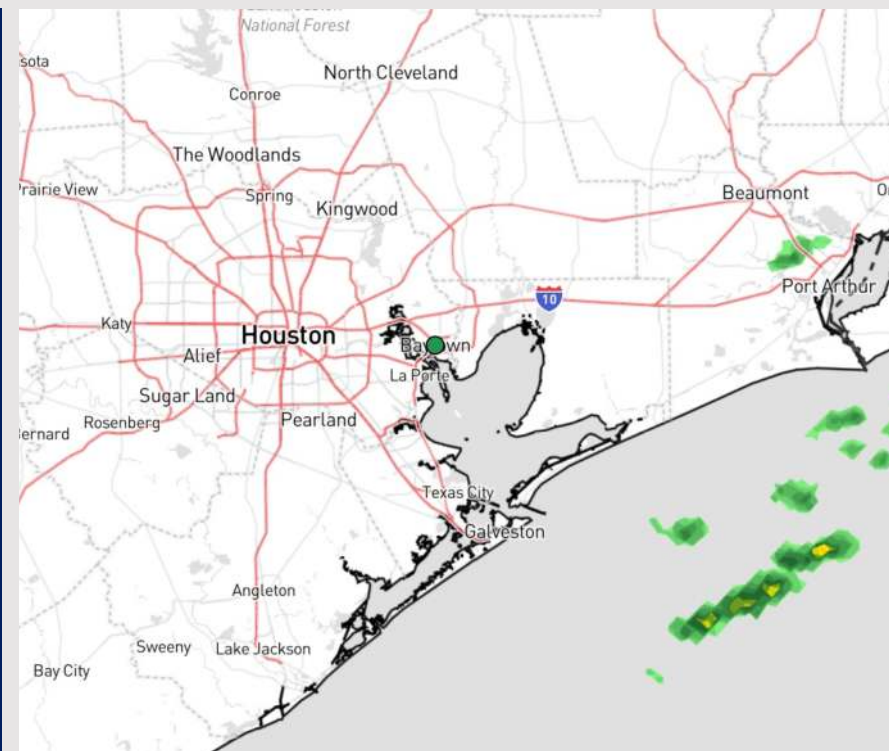
Updated: 12:00 AM CT

Sunday, March 17, 2024

Forecaster: Tyler Riggles

Weather Headlines

- The week will start mostly dry, with minimal moisture chances this morning.
- Winds will remain slightly elevated over the next 48 hours, gusts reaching up to 25 kts at times.
- **No fog concerns over the next few days.**



Current Radar: 11:32 PM CT



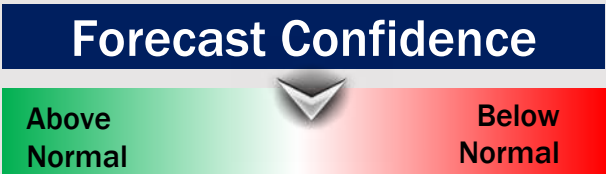
As always, please do not hesitate to reach out to us with any forecast questions via the chat option on Clarity or our on-call number, **(317)-560-8122** press 1 for forecast questions.

Houston Pilots Extended Range Visibility Report



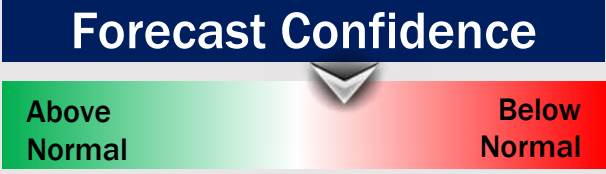
Thursday 3/21/24

Fog is not favored for THU. Heavy rainfall can reduce visibilities to 2-4 miles at times.



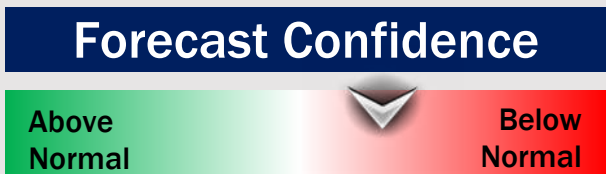
Friday 3/22/24

Fog is not favored for FRI.



Saturday 3/23/24

Calm winds out of the SE can create favorable conditions for fog formation SAT AM.



Chance for Fog

Thursday AM	Unlikely
Thursday PM	Unlikely
Friday AM	Unlikely
Friday PM	Unlikely
Saturday AM	Possible
Saturday PM	Unlikely

Houston Pilots Visibility Chart (miles)



Forecast Confidence



Time	Mon 12am	Mon 1am	Mon 2am	Mon 3am	Mon 4am	Mon 5am	Mon 6am	Mon 7am	Mon 8am	Mon 9am	Mon 10am	Mon 11am	Mon 12pm	Mon 1pm	Mon 2pm	Mon 3pm	Mon 4pm	Mon 5pm	Mon 6pm	Mon 7pm	Mon 8pm	Mon 9pm	Mon 10pm	Mon 11pm
610 Bridge	10	10	10	10	10	10	10	10	10	10	10	10	10	10	10	10	10	10	10	10	10	10	10	10
Kinder 1	10	10	10	10	10	10	10	10	10	10	10	10	10	10	10	10	10	10	10	10	10	10	10	10
Greens Bayou	10	10	10	10	10	10	10	10	10	10	10	10	10	10	10	10	10	10	10	10	10	10	10	10
Shell Crude	10	10	10	10	10	10	10	10	10	10	10	10	10	10	10	10	10	10	10	10	10	10	10	10
Lynchburg Ferries	10	10	10	10	10	10	10	10	10	10	10	10	10	10	10	10	10	10	10	10	10	10	10	10
Exxon 3	10	10	10	10	10	10	10	10	10	10	10	10	10	10	10	10	10	10	10	10	10	10	10	10
Morgans Point	10	10	10	10	10	10	10	10	10	10	10	10	10	10	10	10	10	10	10	10	10	10	10	10
75/76	10	10	10	10	10	10	10	10	10	10	10	10	10	10	10	10	10	10	10	10	10	10	10	10
63/64	10	10	10	10	10	10	10	10	10	10	10	10	10	10	10	10	10	10	10	10	10	10	10	10
51/52	10	10	10	10	10	10	10	10	10	10	10	10	10	10	10	10	10	10	10	10	10	10	10	10
37/38	10	10	10	10	10	10	10	10	10	10	10	10	10	10	10	10	10	10	10	10	10	10	10	10
25/26	10	10	10	10	10	10	10	10	10	10	10	10	10	10	10	10	10	10	10	10	10	10	10	10
11/12	10	10	10	10	10	10	10	10	10	10	10	10	10	10	10	10	10	10	10	10	10	10	10	10
1 & 2 Bravo	10	10	9	9	7	10	10	10	10	10	10	10	10	10	10	10	10	10	10	10	10	10	10	10

NOTE: This is automated data that may/may not agree with the official BAM thinking that's found on the daily slides or special visibility report slides. This data should be used as a guide only

Houston Pilots Wind Chart



Forecast Confidence



Sustained wind 13 Knots
Gusts 18 Knots
Wind from the N

Example

WS: 13
G:18
N

Time Knots	Mon 12am	Mon 1am	Mon 2am	Mon 3am	Mon 4am	Mon 5am	Mon 6am	Mon 7am	Mon 8am	Mon 9am	Mon 10am	Mon 11am	Mon 12pm	Mon 1pm	Mon 2pm	Mon 3pm	Mon 4pm	Mon 5pm	Mon 6pm	Mon 7pm	Mon 8pm	Mon 9pm	Mon 10pm	Mon 11pm
610 Bridge	7	8	9	10	11	12	13	13	13	13	13	13	13	13	13	12	12	12	11	9	8	7	7	6
	14	15	18	20	23	24	25	25	26	26	25	26	27	27	27	25	24	24	21	19	16	14	13	13
	NNE	NNE	NNE	NNE	NNE	NNE	NNE	NNE	NNE	NNE	NE	NE	NNE	NNE	NNE	NNE	NNE	NNE	NNE	NNE	NNE	NNE	NNE	NNE
Kinder 1	7	7	9	10	11	12	13	13	13	13	13	13	13	13	13	12	12	12	11	9	8	7	7	6
	14	15	18	20	23	24	25	25	26	26	25	26	26	26	27	24	24	24	21	19	16	14	13	13
	NNE	NNE	NNE	NNE	NNE	NNE	NNE	NNE	NNE	NNE	NE	NE	NNE	NNE	NNE	NNE	NNE	NNE	NNE	NNE	NNE	NNE	NNE	NNE
Greens Bayou	7	7	9	9	11	11	13	13	13	13	13	13	13	13	13	12	12	11	11	9	8	7	7	6
	14	15	17	20	22	23	25	25	25	25	25	26	25	25	25	23	23	23	21	19	16	15	13	13
	NNE	NNE	NNE	NNE	NNE	NNE	NNE	NNE	NNE	NNE	NNE	NNE	NNE	NNE	NNE	NNE	NNE	NNE	NNE	NNE	NNE	NNE	NNE	NNE
Shell Crude	7	7	9	9	11	11	12	13	13	13	13	13	13	13	13	12	12	11	11	9	8	7	7	6
	14	15	17	20	22	23	24	25	25	25	25	25	25	24	25	24	23	23	21	19	17	15	14	13
	NNE	NNE	NNE	NNE	NNE	NNE	NNE	NNE	NNE	NNE	NNE	NNE	NNE	NNE	NNE	NNE	NNE	NNE	NNE	NNE	NNE	NNE	NNE	NNE
Lynchburg Ferries	7	7	8	9	11	11	11	12	12	11	12	13	13	13	13	13	12	12	11	9	8	7	7	6
	13	14	16	19	21	22	23	24	23	23	24	25	25	24	24	22	23	22	21	18	16	14	13	13
	NNE	NNE	NNE	NNE	NNE	NNE	NNE	NNE	NNE	NNE	NNE	NNE	NNE	NNE	NNE	NNE	NNE	NNE	NNE	N	N	N	NNE	NNE
Exxon 3	9	10	11	13	14	14	14	15	15	15	15	15	15	14	14	14	13	13	13	11	11	9	9	9
	14	15	17	20	21	23	24	24	24	24	24	24	24	24	24	22	23	22	20	19	16	15	15	13
	NNE	NNE	NNE	NNE	NNE	NNE	NNE	NNE	NNE	NNE	NNE	NNE	NNE	NNE	NNE	NNE	NNE	NNE	NNE	NNE	NNE	NNE	NNE	NNE
Morgans Point	9	9	12	13	14	14	14	15	15	15	15	15	14	14	14	14	13	13	13	11	11	10	10	9
	14	14	17	19	21	23	23	26	26	25	25	24	25	24	24	24	23	22	21	19	17	16	15	14
	NNE	NNE	NNE	NNE	NNE	NNE	NNE	NNE	NNE	NNE	NNE	NNE	NNE	NNE	NNE	NNE	NNE	NNE	NNE	NNE	NNE	NNE	NNE	NNE
75/76	13	15	16	18	19	21	21	21	22	21	21	19	19	17	17	17	17	17	17	17	16	15	15	15
	19	21	23	26	28	30	30	30	31	30	30	28	28	27	27	26	26	26	24	24	23	22	21	21
	NNE	NNE	NNE	NNE	NNE	NNE	NNE	NNE	NNE	NNE	NNE	NE	NNE	NNE	NNE	NNE	NNE	NNE	NNE	NNE	NNE	NNE	NNE	NNE
63/64	13	14	16	18	19	22	23	23	23	22	22	20	19	18	18	17	17	17	17	17	17	15	15	15
	19	21	23	27	28	31	32	32	33	32	32	29	29	27	28	27	26	25	26	24	24	22	22	22
	NNE	NNE	NNE	NNE	NNE	NNE	NNE	NNE	NNE	NNE	NNE	NE	NNE	NNE	NNE	NNE	NNE	NNE	NNE	NNE	NNE	NNE	NNE	NNE
51/52	14	15	16	18	19	21	22	23	23	23	23	21	19	19	19	18	17	17	18	17	17	16	16	16
	20	21	23	26	28	31	32	34	34	33	33	30	29	28	29	26	25	24	26	26	24	23	23	23
	NNE	NNE	NNE	NNE	NNE	NNE	NNE	NNE	NNE	NNE	NE	NNE	NNE	NNE	NNE	NNE	NNE	NNE	NNE	NNE	NNE	NNE	NNE	NNE
37/38	13	14	16	17	19	21	22	23	24	23	23	21	20	19	19	18	17	17	17	17	17	16	15	15
	19	21	23	25	27	30	32	33	35	33	33	30	29	28	29	27	25	24	25	25	24	23	22	22
	NNE	NNE	NNE	NNE	NNE	NNE	NNE	NNE	NNE	NNE	NNE	NNE	NNE	NNE	NNE	NNE	NNE	NNE	NNE	NNE	NNE	NNE	NNE	NNE
25/26	13	13	15	17	19	21	22	23	24	23	23	21	21	19	20	19	17	17	17	17	17	16	15	15
	18	20	22	25	28	30	32	33	35	33	33	30	30	28	29	27	25	25	25	24	24	23	21	22
	NNE	NNE	NNE	NNE	NNE	NNE	NNE	NNE	NNE	NNE	NNE	NNE	NNE	NNE	NNE	NNE	NNE	NNE	NNE	NNE	NNE	NNE	NNE	NNE
11/12	9	11	13	15	17	18	20	21	22	21	21	20	19	18	19	17	17	15	15	14	13	12	13	
	14	16	19	21	24	27	30	30	32	30	31	29	28	27	28	26	24	22	22	21	20	20	18	18
	NNE	NNE	NNE	NNE	NNE	NNE	NNE	NNE	NNE	NNE	NNE	NNE	NNE	NNE	NNE	NNE	NNE	NNE	NNE	NNE	NNE	NNE	NNE	NNE
1 & 2 Bravo	13	14	16	18	20	21	23	23	25	25	25	23	22	21	20	19	19	19	19	17	17	17	16	16
	20	21	23	26	29	31	33	34	36	36	37	33	32	30	30	27	27	27	27	24	24	24	23	23
	NNE	NNE	NNE	NE	NNE	NNE	NNE	NNE	NNE	NNE	NNE	NNE	NNE	NNE	NNE	NNE	NNE	NNE	NNE	NNE	NNE	NNE	NNE	NNE

NOTE: This is automated data that may/may not agree with the official BAM thinking that's found on the daily slides. This data should be used as a guide only

Houston Pilots: Mon. 3/18/2024



Forecast Discussion

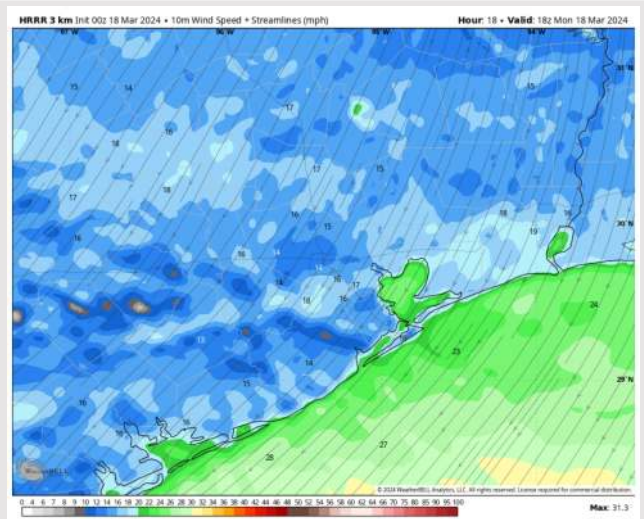
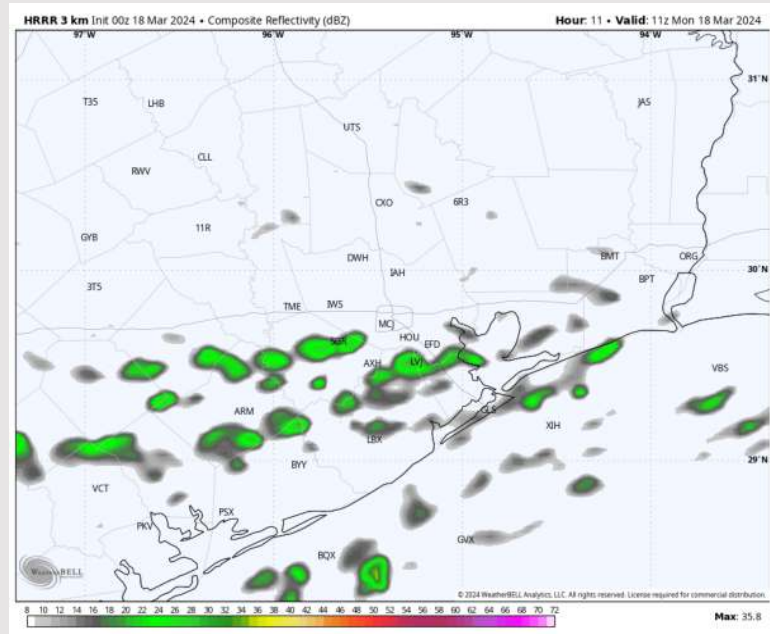
Precip: Favoring dry conditions for today aside from lingering light showers through 9AM-CT.

Wind: Winds out of the NE throughout the day. **N Morgan's Point:** Winds at 7-12 kts throughout most of the day, with winds tapering down to 4-9 kts after 7 PM. **S of Morgan's Point:** Winds will pick up to 15-20 kts shortly after 12 AM. Then after 1 PM, winds will begin to gradually taper down to 7-12 kts for Stations N of 11/12 by 4 PM. **Wind gusts of 20-25 kts possible through all Stations through 7 PM. The risk for wind gusts continues beyond 7 PM for Stations S of Morgan's Point**

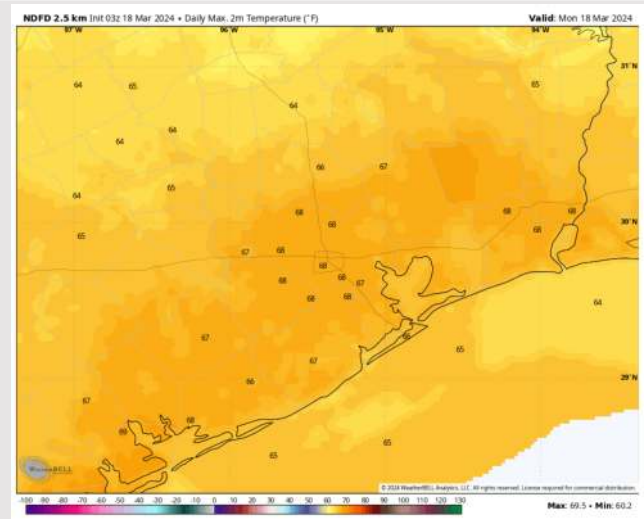
High Temps: **N of Morgan's Point:** Upper 60s-Near 70 F. **S of Morgan's Point:** Mid 60s F.

Visibility: No visibility concerns for Monday.

Precip Image: 6 AM CT



Wind Speed
1 PM CT



High Temps
Today

Forecast Discussion

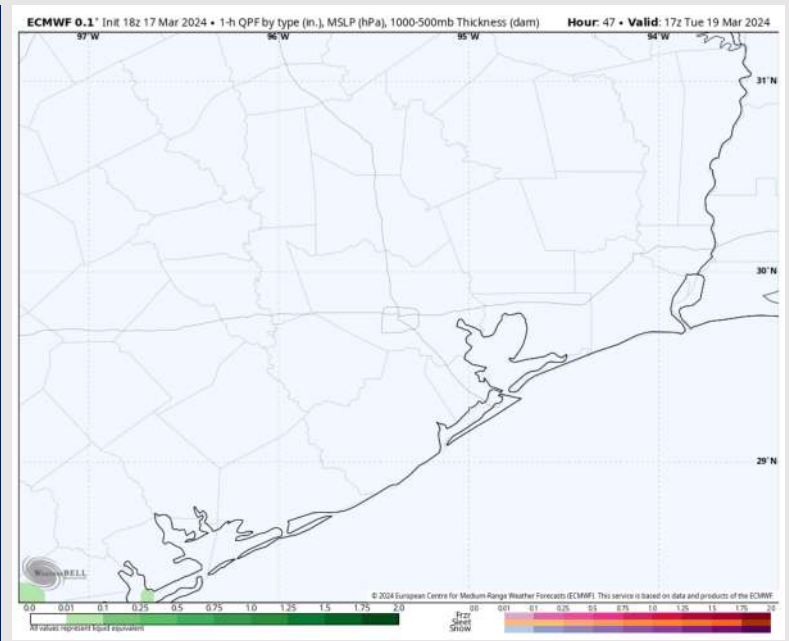
Precip: Favoring dry conditions for Tuesday.

Wind: Winds out of the NE will veer out of the E by 12 PM, then veer out of the SE by 3 PM. **N Morgan's Point:** Winds expected to remain at 3-8 kts throughout the day. **S of Morgan's Point:** Winds at 7-12 kts for Stations N of 11/12 and 15-20 kts for 11/12 and the Boarding Station will gradually taper through the morning until all Stations S of Morgan's Point reach 5-10 kts by 8 AM. Winds will then decrease to 3-8 kts by 3 PM. **Wind gusts of 20-25 kts possible for Stations S of Morgan's Point through 8 AM.**

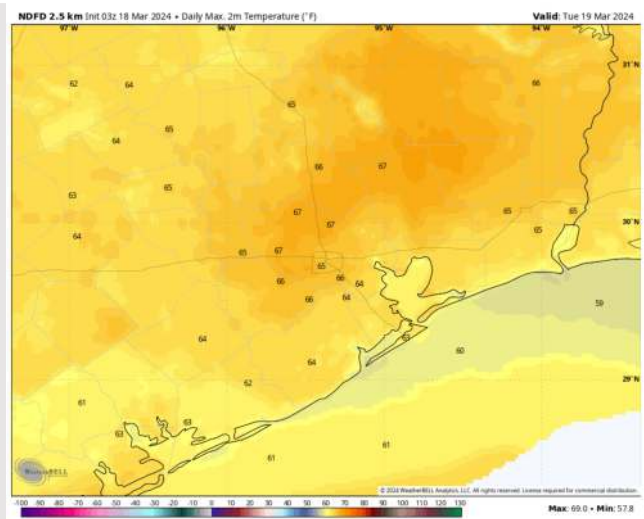
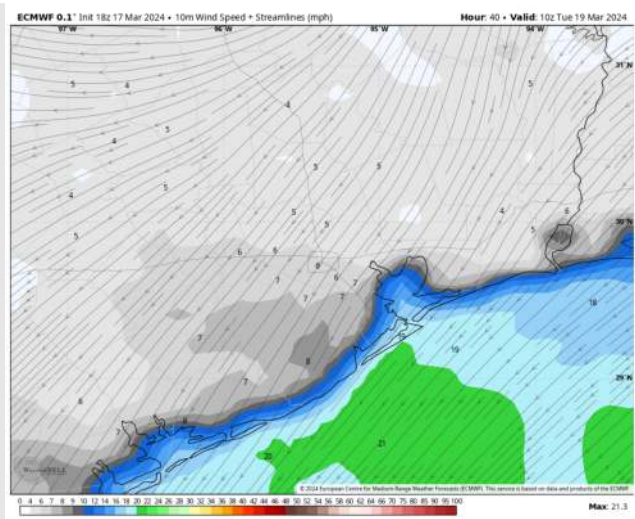
High Temps: **N of Morgan's Point:** Mid 60's F. **S of Morgan's Point:** Low 60's F.

Visibility: Not anticipating fog concerns for Tuesday.

Precip Image: 12 PM CT



Wind Speed:
5 AM CT



High Temps
Tuesday

Forecast Discussion

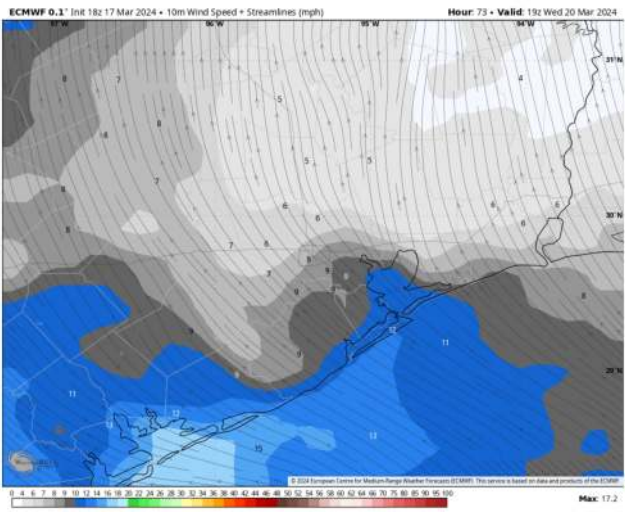
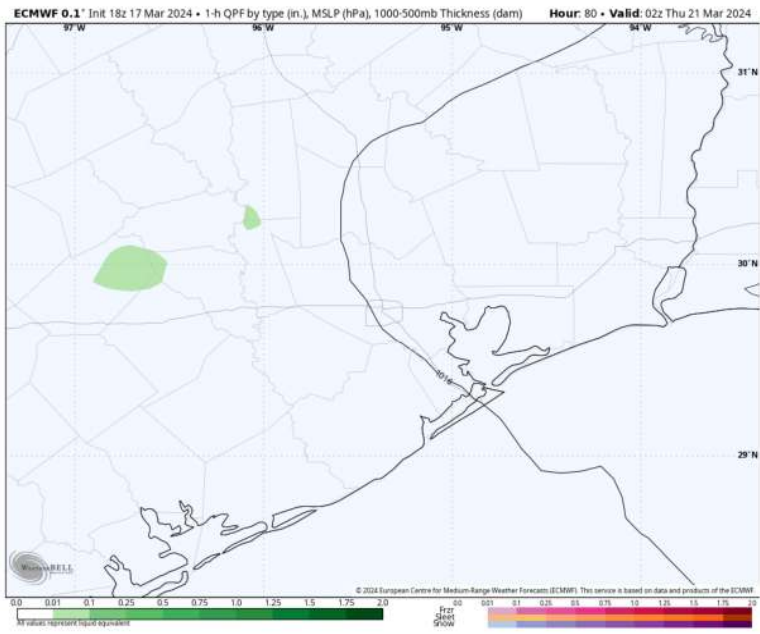
Precip: Favoring mostly dry conditions for Wednesday, though a low-end risk (10%) for isolated pockets of drizzle will be in play after 4 PM.

Wind: Winds out of the SSE throughout Wednesday. **N of Morgan's Point:** 3-8 kts throughout the day. **S of Morgan's Point:** 3-8 kts throughout the AM and early afternoon, increasing to 6-11 kts by 2 PM.

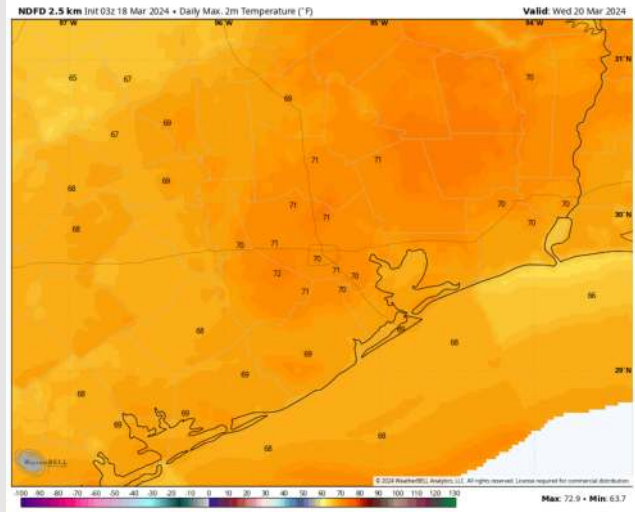
High Temps: **N of Morgan's Point:** Low 70's F. **S of Morgan's Point:** Upper 60s F .

Visibility: Fog concerns not favored for Wednesday.

Precip Image: 9 PM CT

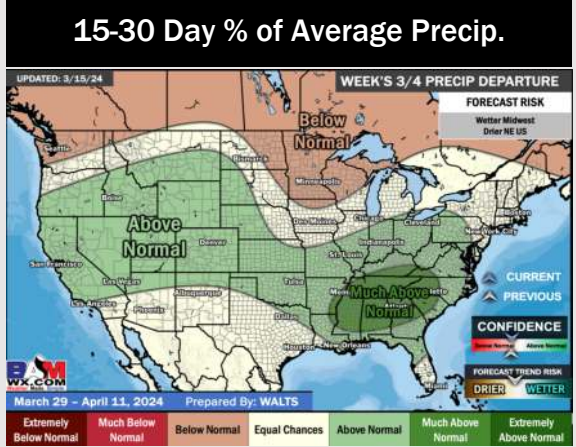
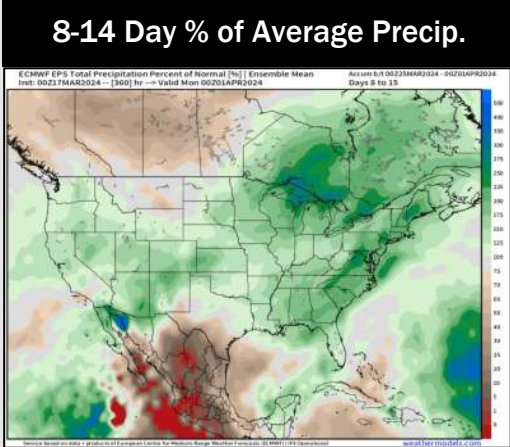
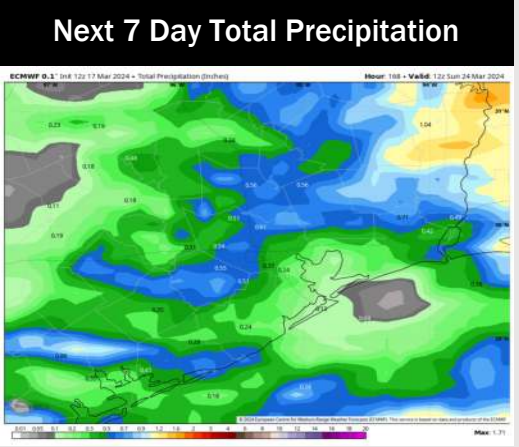
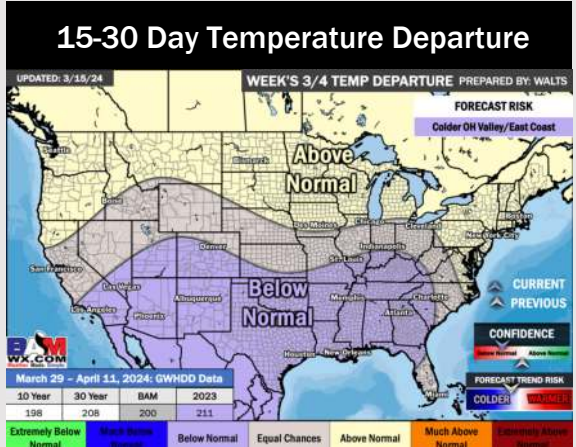
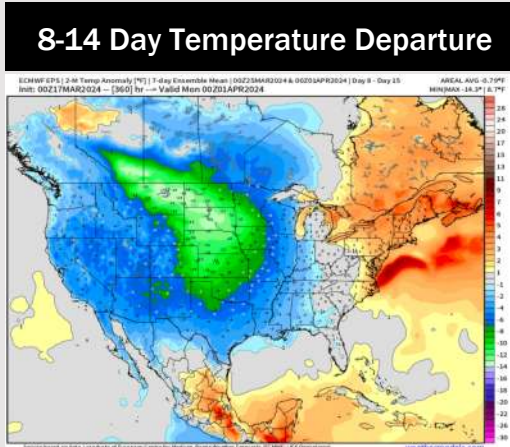
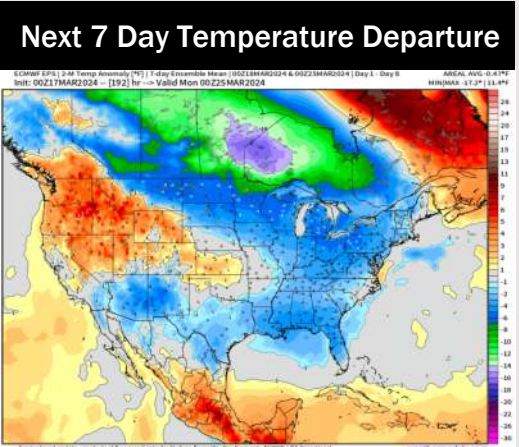


Wind Speed:
2 PM CT



High Temps
Wednesday

Houston Pilots: 3/17/24



- Favoring conditions to dry out to start the beginning of the week. With precip chances to work back in starting Thursday. Temps expected to be below normal.
- Slightly above normal precipitation chances are at play during the week 2 timeframe. Temps continue to be below normal.
- Below normal temperatures and seasonable chances for precipitation are favored in the weeks 3/4 timeframe.