

Houston Pilots Forecast Package

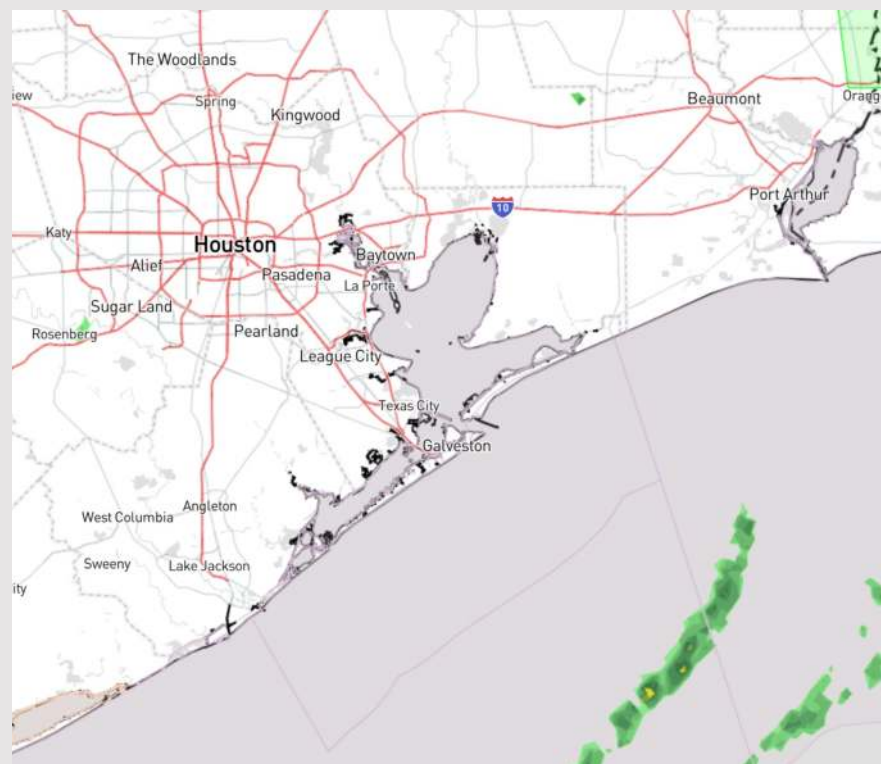


Updated: 2:00 PM CT
Friday, March 8, 2024

Forecaster: Alyssa Elliott

Weather Headlines

- Scattered showers expected to continue over the next few hours before light rain chances become much more isolated.
- Wind gusts expected to become slightly elevated later this evening and into SAT.
- **Patchy sea fog risks are expected to continue until cold front passes later this PM. See slide below for additional information.**



Current Radar: 2:00 PM CT



As always, please do not hesitate to reach out to us with any forecast questions via the chat option on Clarity or our on-call number, **(317)-560-8122** press 1 for forecast questions.

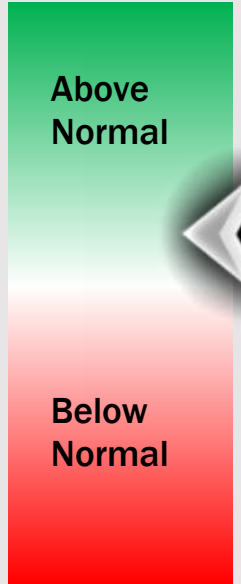
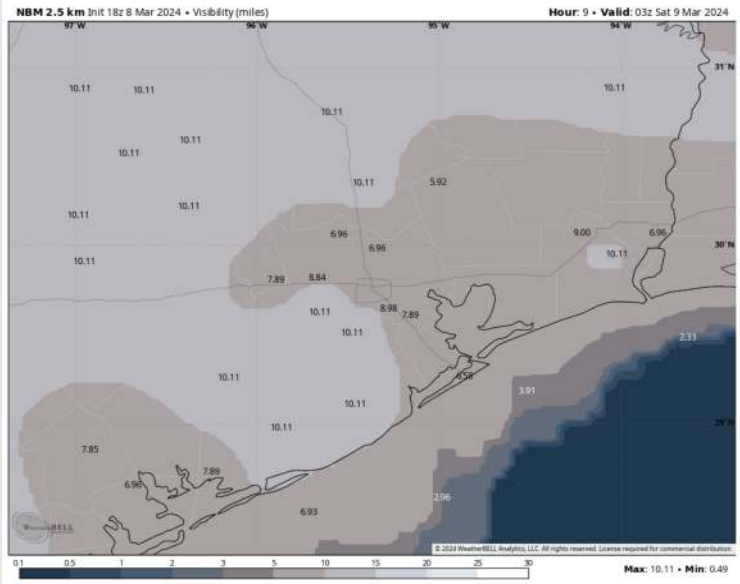
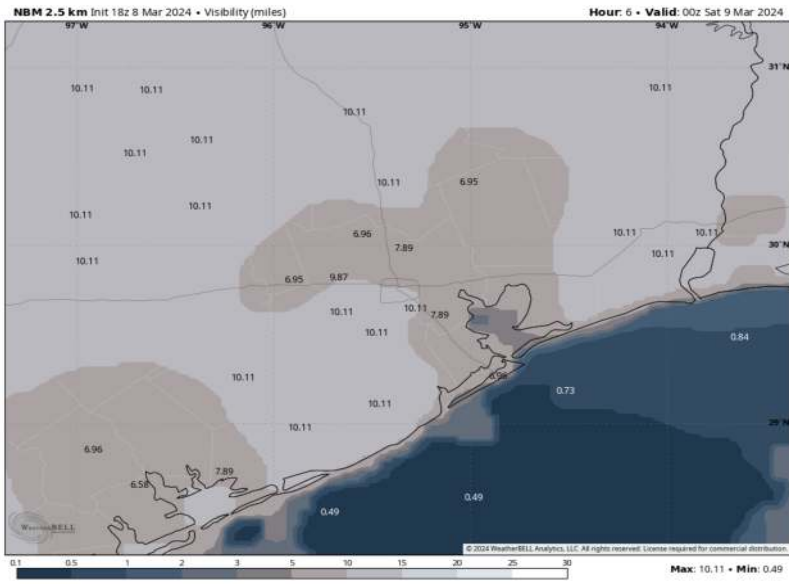
Houston Pilots Visibility Report



6 PM CT FRI VISIBILITY

9 PM CT FRI VISIBILITY

Confidence



TIMEFRAME DISCUSSED	THREAT
CURRENT - 10 PM FRI	LOW - MED

- Stations 51/52 through the Boarding Station may continue to see patchy fog, dropping visibility to 1 – 3 miles with visibility at times dropping under a mile. The greatest risk for this visibility at less than 1 mile occurring at the Boarding Station.
- Stations N of 51/52 are favored to visibility of 4 – 6 miles or greater for the rest of the day.
- This fog threat is not favored to exit until the front passes around 10 PM CT.

Houston Pilots Extended Range Visibility Report



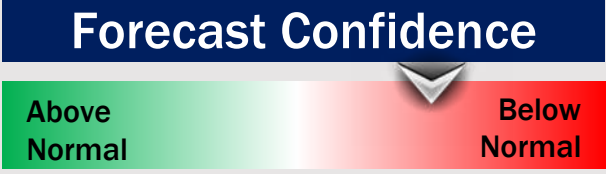
Monday 3/11/24

Fog not favored for Monday.



Tuesday 3/12/24

Fog not favored for Tuesday, although winds will gradually shift to out of the southeast. Temperatures and cloud cover will be the limiting factor at present.



Wednesday 3/13/24

Fog not favored for Wednesday.



Chance for Fog

Monday AM	Unlikely
Monday PM	Unlikely
Tuesday AM	Unlikely
Tuesday PM	Unlikely
Wednesday AM	Unlikely
Wednesday PM	Unlikely

Houston Pilots Visibility Chart (miles)



Forecast Confidence



Time	Fri 1pm	Fri 2pm	Fri 3pm	Fri 4pm	Fri 5pm	Fri 6pm	Fri 7pm	Fri 8pm	Fri 9pm	Fri 10pm	Fri 11pm	Sat 12am	Sat 1am	Sat 2am	Sat 3am	Sat 4am	Sat 5am	Sat 6am	Sat 7am	Sat 8am	Sat 9am	Sat 10am	Sat 11am	Sat 12pm
610 Bridge	5	10	10	10	10	10	10	10	7	9	10	10	10	10	10	10	10	10	10	10	10	10	10	10
Kinder 1	5	10	10	10	10	10	10	10	7	7	10	10	10	10	10	10	10	10	10	10	10	10	10	10
Greens Bayou	5	10	10	10	10	10	10	10	7	7	10	10	10	10	10	10	10	10	10	10	10	10	10	10
Shell Crude	5	9	10	10	10	9	10	9	7	7	10	10	10	10	10	10	10	10	10	10	10	10	10	10
Lynchburg Ferries	6	9	10	10	10	9	10	9	7	7	10	10	10	10	10	10	10	10	10	10	10	10	10	10
Exxon 3	6	7	10	10	10	6	10	9	7	7	10	10	10	10	10	10	10	10	10	10	10	10	10	10
Morgans Point	4	6	10	9	9	6	10	9	7	7	9	9	9	10	10	10	10	10	10	10	10	10	10	10
75/76	3	5	7	6	3	3	4	6	7	6	9	10	9	10	6	9	9	9	9	9	9	9	9	10
63/64	3	5	7	6	3	3	4	6	7	6	9	10	9	10	6	9	9	9	9	9	9	9	9	10
51/52	5	6	6	6	6	6	5	5	7	6	9	10	9	10	6	9	9	9	9	9	9	9	9	10
37/38	5	5	6	6	6	6	6	5	7	6	9	10	9	10	6	9	9	9	9	9	9	9	9	10
25/26	4	5	6	6	6	6	6	5	7	6	7	10	9	10	6	9	9	9	9	9	9	9	9	10
11/12	3	4	6	6	6	4	6	4	6	6	7	10	9	10	6	9	9	9	9	9	9	9	9	10
1 & 2 Bravo	0.7	0.5	0.5	0.5	0.5	0.5	1	3	3	5	7	10	9	9	5	9	9	9	9	9	9	9	9	10

NOTE: This is automated data that may/may not agree with the official BAM thinking that's found on the daily slides or special visibility report slides. This data should be used as a guide only

Houston Pilots Wind Chart



Forecast Confidence



Example

Sustained wind 13 Knots
Gusts 18 Knots
Wind from the N

WS: 13
G:18
N

Time Knots	Fri 1pm	Fri 2pm	Fri 3pm	Fri 4pm	Fri 5pm	Fri 6pm	Fri 7pm	Fri 8pm	Fri 9pm	Fri 10pm	Fri 11pm	Sat 12am	Sat 1am	Sat 2am	Sat 3am	Sat 4am	Sat 5am	Sat 6am	Sat 7am	Sat 8am	Sat 9am	Sat 10am	Sat 11am	Sat 12pm	
610 Bridge	5	6	6	6	6	6	6	7	8	10	13	16	15	13	11	12	12	12	13	13	13	13	13	13	
	11	11	13	13	12	12	13	13	17	20	26	32	30	26	23	24	24	25	27	27	26	26	25	25	
	W	W	WNW	NW	NW	NW	NW	NNW	NNW	NNW	NNW	NNW	NNW	NNW	NNW	NNW	NNW	NNW	NNW	NNW	NNW	NNW	NNW	NNW	
Kinder 1	5	5	6	6	6	5	6	7	8	9	13	15	15	13	11	12	12	12	13	13	13	13	13	13	
	11	11	13	12	12	12	13	13	16	20	26	31	30	27	23	23	24	24	26	26	26	26	25	25	
	W	W	WNW	NW	NW	NW	NW	NNW	NNW	NNW	NNW	NNW	NNW	NNW	NNW	NNW	NNW	NNW	NNW	NNW	NNW	NNW	NNW	NNW	
Greens Bayou	5	5	5	5	5	5	6	7	8	10	12	15	15	13	11	11	11	12	12	13	13	13	13	13	
	11	11	11	11	11	11	13	13	16	20	25	31	30	26	22	22	23	24	25	25	26	25	24	24	
	W	W	WNW	NW	NW	NNW	NW	NNW	NNW	NNW	NNW	NNW	NNW	NNW	NNW	NNW	NNW	NNW	NNW	NNW	NNW	NNW	NNW	NNW	
Shell Crude	5	5	5	5	5	5	6	6	8	9	12	15	15	13	11	11	11	12	12	13	13	13	13	13	
	11	11	11	11	11	11	13	13	16	20	24	30	30	26	22	23	23	24	25	25	26	25	24	23	
	WSW	W	WNW	WNW	NW	NNW	NW	NNW	NNW	NNW	NNW	NNW	NNW	NNW	NNW	NNW	NNW	NNW	NNW	NNW	NNW	NNW	NNW	NNW	
Lynchburg Ferries	5	5	5	5	5	5	6	6	8	9	11	15	15	13	11	11	11	12	12	13	13	14	14	13	
	10	11	11	11	11	11	13	13	16	19	23	30	30	25	22	22	22	24	24	24	24	25	25	23	23
	WSW	W	WNW	NW	NW	NW	NNW	NNW	NNW	NNW	NNW	NNW	NNW	NNW	NNW	NNW	NNW	NNW	NNW	NNW	NNW	NNW	NNW	NNW	NNW
Exxon 3	5	5	5	6	6	6	6	7	8	11	13	15	14	15	13	15	15	16	16	16	15	15	15	14	
	11	11	12	12	11	11	12	13	15	19	23	27	27	25	21	22	22	23	23	24	25	24	24	24	
	SW	WSW	W	W	WNW	WNW	NW	NNW	NNW	NNW	NNW	NNW	NNW	NNW	NNW	NNW	NNW	NNW	NNW	NNW	NNW	NNW	NNW	NNW	
Morgans Point	5	5	5	5	5	5	6	6	8	9	13	14	14	14	13	14	15	15	16	15	15	15	15	14	
	10	10	10	10	10	9	10	12	14	18	22	25	26	24	21	22	22	24	25	25	27	26	25	24	
	SW	SW	SSW	SW	W	WNW	NW	NNW	NNW	NNW	NNW	NNW	NNW	NNW	NNW	NNW	NNW	NNW	NNW	NNW	NNW	NNW	NNW	NNW	
75/76	6	6	7	8	8	8	7	9	9	11	15	17	18	19	18	20	21	21	21	21	21	20	19	18	
	13	12	13	13	12	12	11	13	14	17	22	25	26	27	26	29	30	32	33	32	31	29	29	27	
	SSW	S	S	S	SSW	SW	W	NW	NNW	NNW	NNW	NNW	NNW	NNW	NNW	NNW	NNW	NNW	NNW	NNW	NNW	NNW	NNW	NNW	
63/64	7	6	6	7	7	7	7	8	9	11	15	17	18	18	17	20	21	22	22	22	22	20	20	17	
	13	12	12	13	11	11	10	12	13	16	21	25	26	27	25	29	31	32	33	32	32	29	29	26	
	SSW	S	S	S	SSW	SSW	W	NW	NNW	NNW	NNW	NNW	NNW	NNW	NNW	NNW	NNW	NNW	NNW	NNW	NNW	NNW	NNW	NNW	
51/52	7	6	6	6	7	6	6	7	7	10	13	17	17	17	18	19	21	23	23	23	23	21	20	19	
	13	11	11	11	10	9	9	10	12	15	20	24	26	26	27	28	30	33	34	33	33	30	30	28	
	S	SSW	S	S	SSW	SW	W	WNW	NW	NNW	NNW	NNW	NNW	NNW	NNW	NNW	NNW	NNW	NNW	NNW	NNW	NNW	NNW	NNW	
37/38	7	7	7	6	6	6	5	7	7	9	13	16	17	17	18	19	21	23	23	23	23	22	21	19	
	13	11	11	11	10	9	8	10	12	15	20	23	25	26	26	28	31	33	34	34	33	31	30	28	
	S	SSW	S	SSW	SSW	SW	WSW	WNW	NNW	NNW	NNW	NNW	NNW	NNW	NNW	NNW	NNW	NNW	NNW	NNW	NNW	NNW	NNW	NNW	
25/26	7	7	7	7	7	6	5	6	7	9	13	15	17	17	17	19	21	23	23	23	23	22	21	20	
	13	12	11	11	10	9	8	9	12	15	20	22	25	26	26	28	30	33	35	34	33	32	30	30	
	SSW	SSW	SSW	SSW	SW	SW	WSW	WNW	NW	NNW	NNW	NNW	NNW	NNW	NNW	NNW	NNW	NNW	NNW	NNW	NNW	NNW	NNW	NNW	
11/12	7	7	7	6	6	5	4	5	6	7	11	13	15	15	15	17	19	21	22	23	22	21	20	19	
	12	11	10	9	9	8	7	8	11	13	18	21	21	22	22	25	28	30	32	32	32	30	30	27	
	SSW	SW	SW	SSW	SW	SW	WSW	WNW	NNW	NNW	NNW	NNW	NNW	NNW	NNW	NNW	NNW	NNW	NNW	NNW	NNW	NNW	NNW	NNW	
1 & 2 Bravo	6	7	6	7	7	7	7	7	9	10	12	14	15	17	18	19	21	23	24	24	25	23	23	21	
	11	11	11	11	10	10	10	11	13	15	19	21	22	24	26	28	30	33	34	34	36	33	33	30	
	SSW	SSW	SW	SW	SW	SW	WSW	W	WNW	NNW	NNW	NNW	NNW	NNW	NNW	NNW	NNW	NNW	NNW	NNW	NNW	NNW	NNW	NNW	

NOTE: This is automated data that may/may not agree with the official BAM thinking that's found on the daily slides or special visibility report slides. This data should be used as a guide only

Houston Pilots: Fri. 3/8/2024



Forecast Discussion

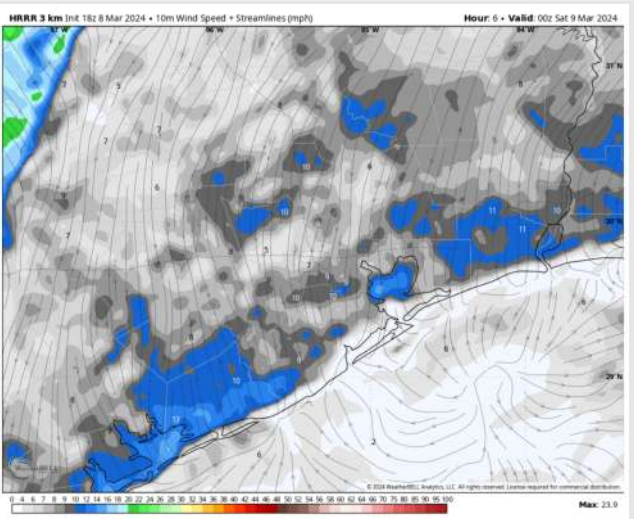
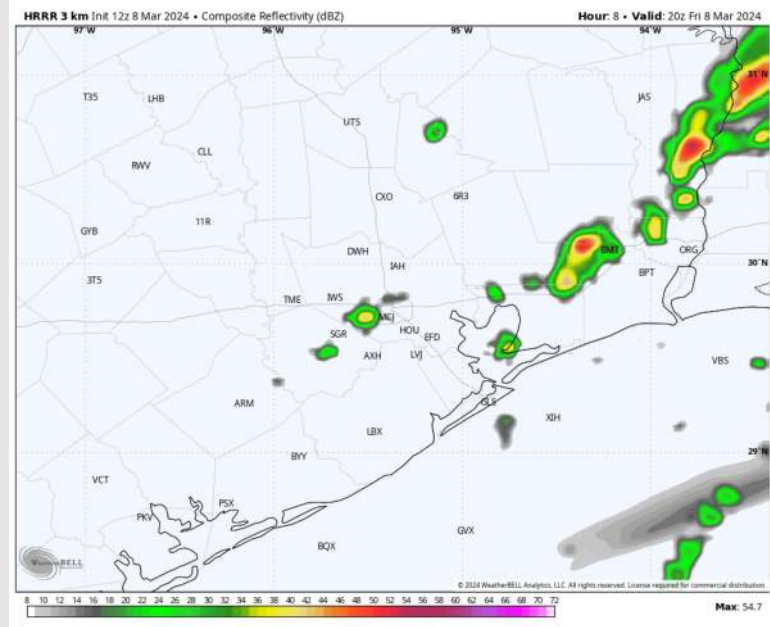
Precip: A few scattered showers (10-20% chances) will linger through 6 PM. Then favoring mostly dry conditions outside of hazy / misty conditions until the front passes.

Wind: Calm, variable winds are expected to increase and shift out of the N by 6 PM. **N of Morgan's Point:** Winds at 7 – 12 kts through 6 PM before weakening to 3 – 8 kts. **S of Morgan's Point:** Calm winds will continue until around 6 PM, then winds pick up to 10 – 15 kts continuing then for the rest of the PM. **Gusts of 25 – 35 kts will be possible with passing front late this evening into SAT AM.**

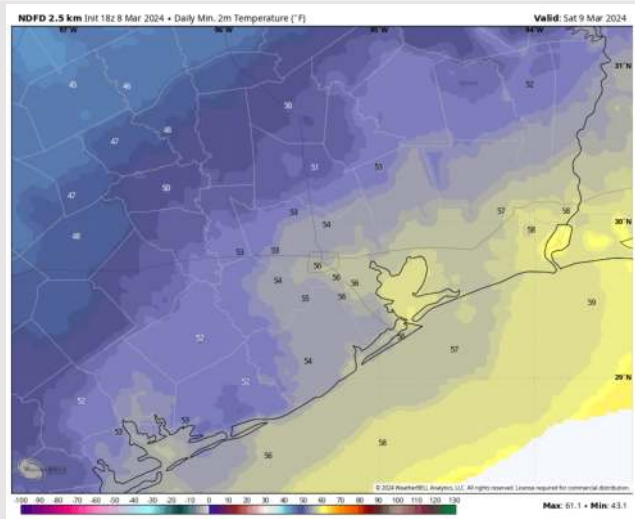
Low Temps: **N of Morgan's Point:** Mid 70s F. **S of Morgan's Point:** Upper 60's F.

Visibility: Patchy fog and hazy conditions continue to cause some visibility issues this afternoon, especially for the Boarding Station. Anticipating the cold front pushing in from the NW to put an end to these foggy conditions. Check fog slide for more details.

Precip Image: 2 PM CT



Wind Speed:
6 PM CT



Low Temps
SAT AM

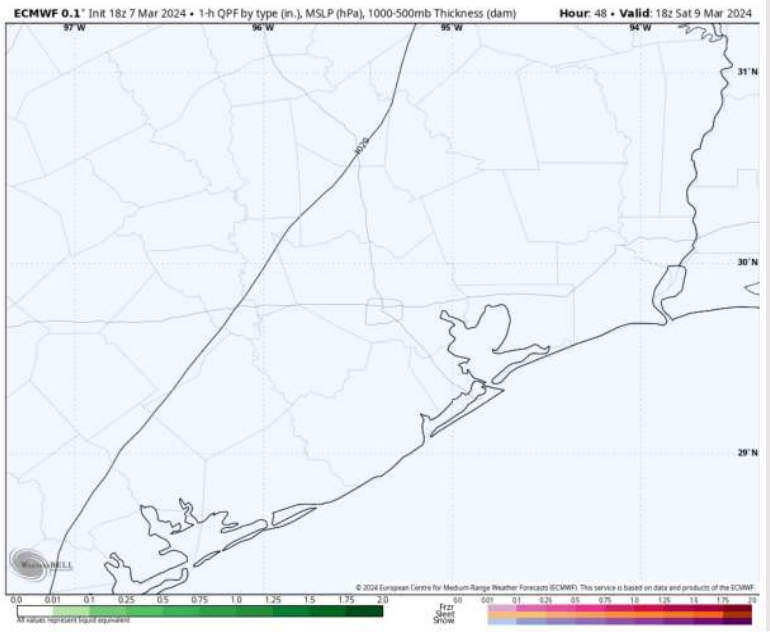
Houston Pilots: Sat. 3/9/2024



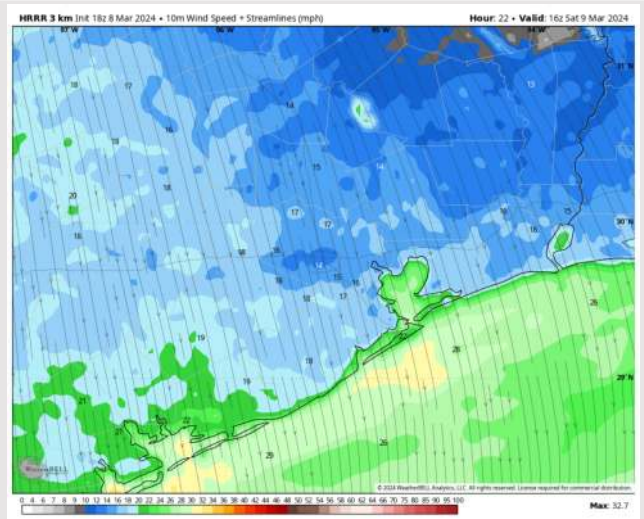
Forecast Discussion

- Precip:** Dry conditions favored for Saturday.
- Wind:** Winds out of the N / NW throughout the day. **N Morgan's Point:** Winds will sit at 12 – 17 kts throughout the day. **S of Morgan's Point:** Winds at 20 – 25 kts throughout the day. Gusts from the N/NW may reach 25 – 35 kts through the day.
- High Temps:** **N of Morgan's Point:** Mid 60s F. **S of Morgan's Point:** Low 60s F.
- Visibility:** No visibility concerns for Saturday as model data has pushed the arrival of the front up earlier to late FRI PM.

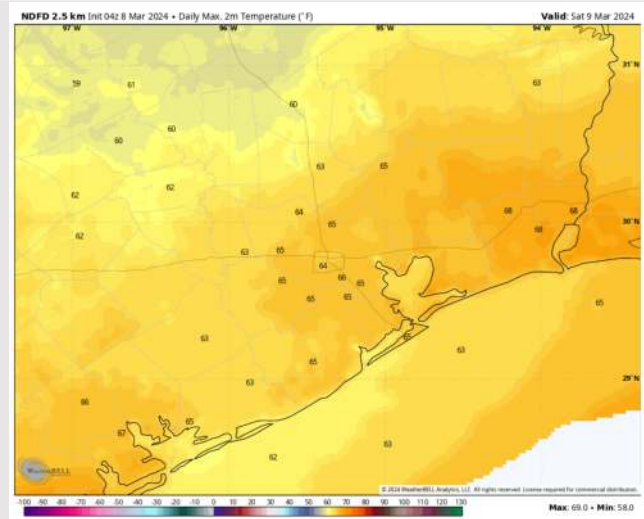
Precip Image: 12 PM CT



Wind Speed
10 AM CT



High Temps
Saturday



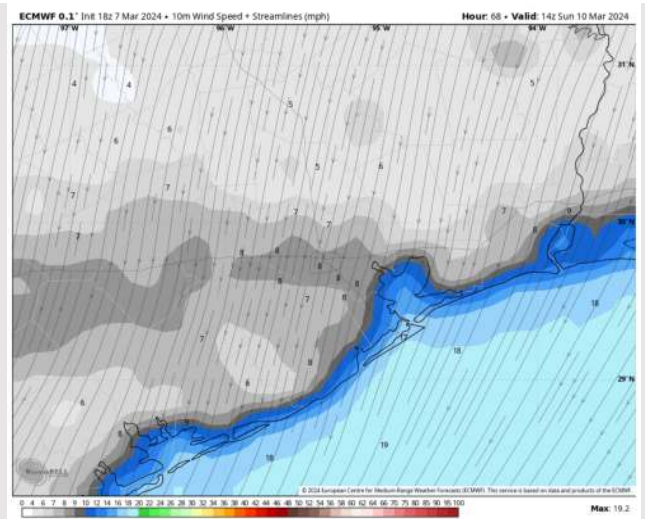
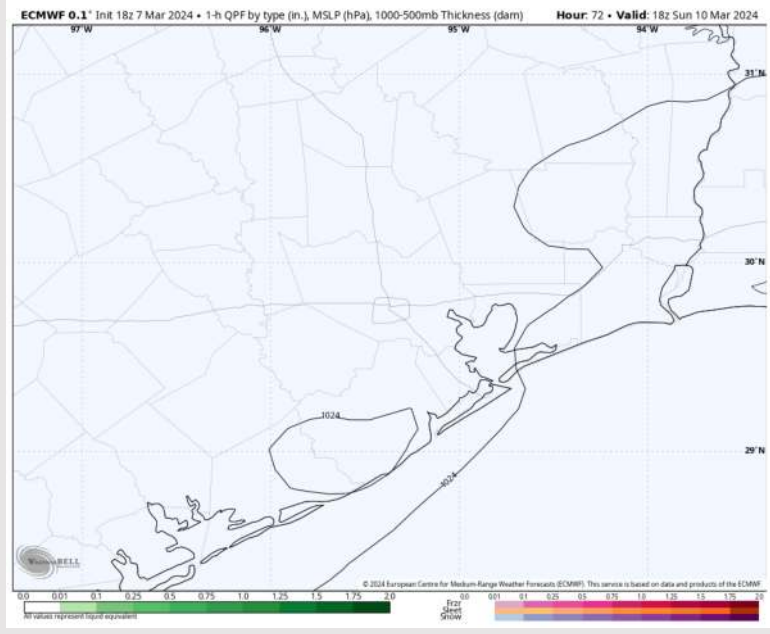
Houston Pilots: Sun. 3/10/2024



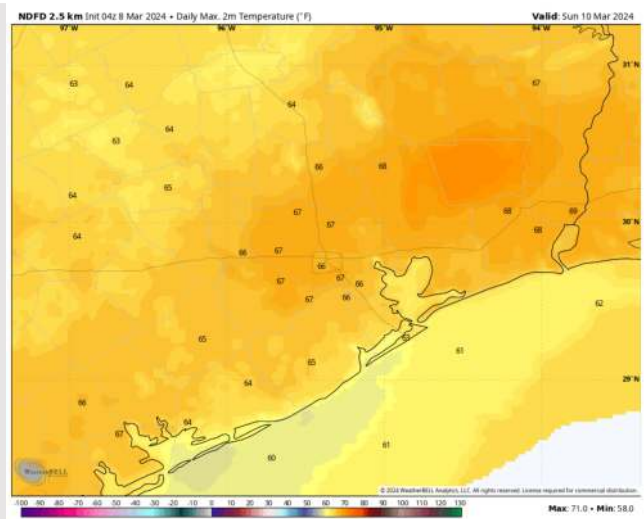
Forecast Discussion

- Precip:** Favoring dry conditions for Sunday.
- Wind:** Winds will be out of the N/NE through 5 PM before winds become variable. **N Morgan's Point:** Winds at 4-9 kts through 11 AM before a slight decrease to 3-8 kts. **S of Morgan's Point:** 7-12 kts through 11 AM before decreasing to 3-8 kts. **Wind gusts of 18-23 kts in play for Stations S of Morgan's Point through 11 AM.**
- High Temps:** **N of Morgan's Point:** Mid-Upper 60's F. **S of Morgan's Point:** Low 60s F.
- Visibility:** Not anticipating any visibility concerns for Sunday.

Precip Image: 12 PM CT



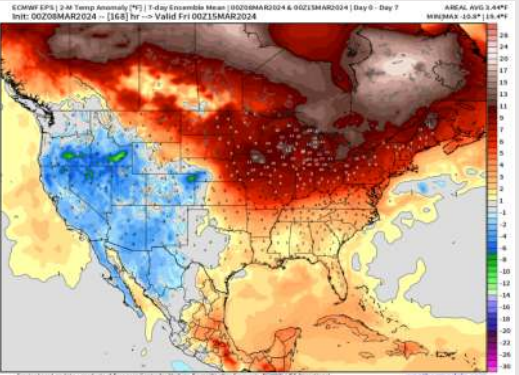
Wind Speed:
8 AM CT



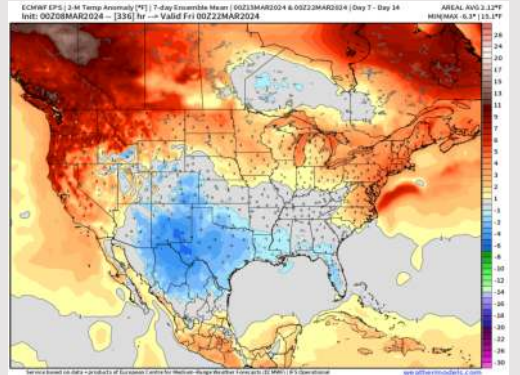
High Temps
Sunday

Houston Pilots: 3/8/24

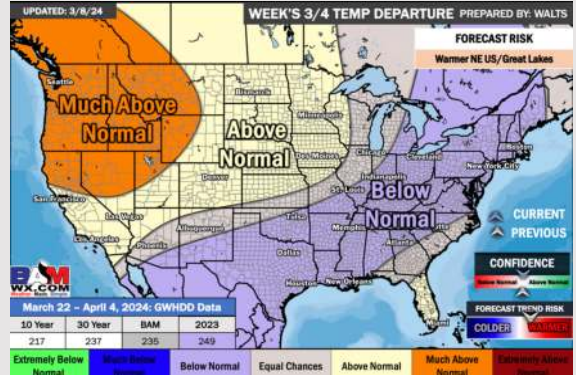
Next 7 Day Temperature Departure



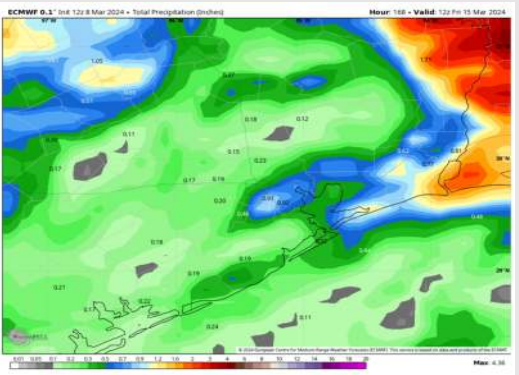
8-14 Day Temperature Departure



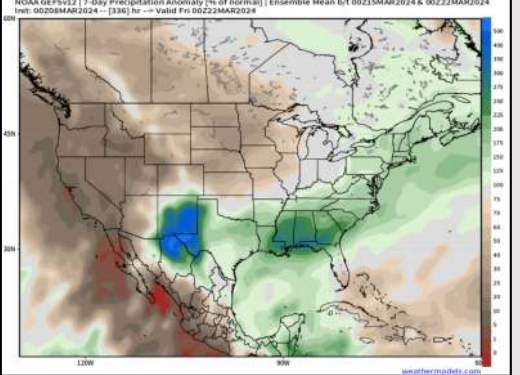
15-30 Day Temperature Departure



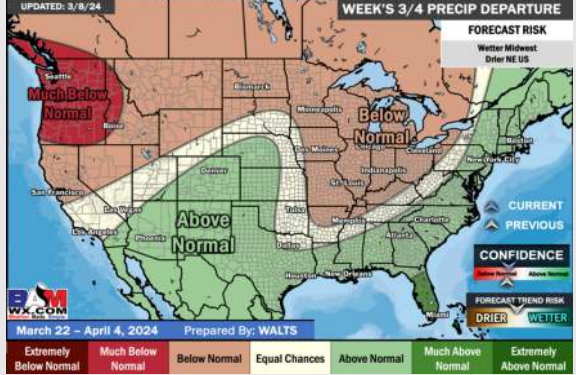
Next 7 Day Total Precipitation



8-14 Day % of Average Precip.



15-30 Day % of Average Precip.



- The next best shot for rain will move through towards the middle of next week. Slightly above normal temperatures favored for the week ahead.
- Above normal precipitation chances are at play during the week 2 timeframe. Temps expected to be below normal.
- Below normal temperatures and above normal chances for precipitation are favored in the weeks 3/4 timeframe.