

# Houston Pilots Forecast Package

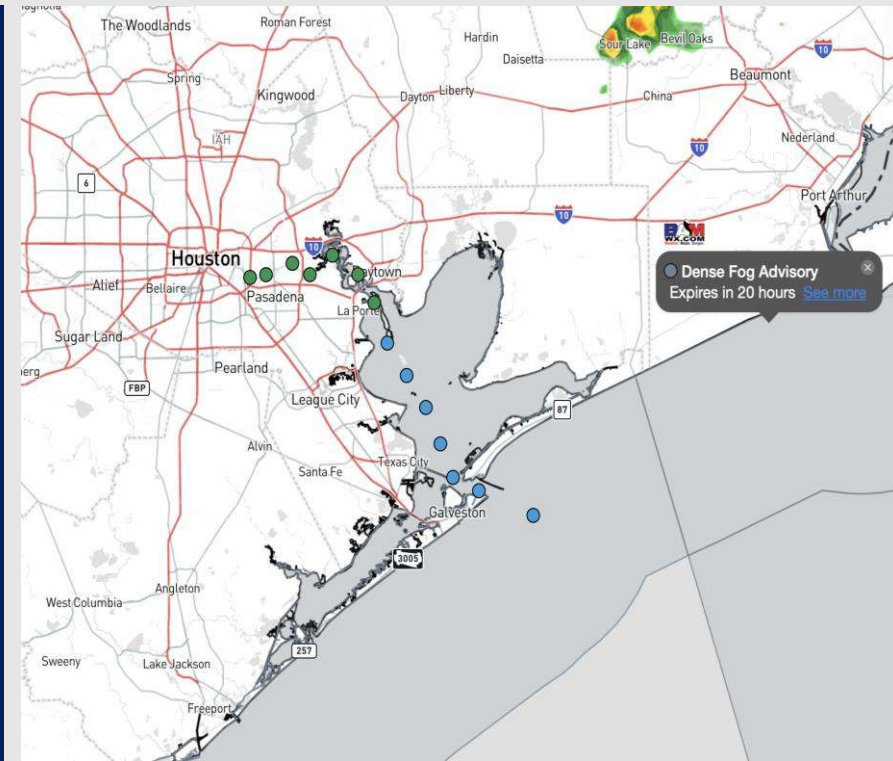


Updated: 3:00 PM CT  
Monday, March 4, 2024

Forecaster: Alyssa Elliott

## Weather Headlines

- Scattered rain chances will be possible throughout the PM. **Localized stronger storms cannot be ruled out.**
- Winds generally calm for all stations this evening with some slightly elevated gusts out of the SE. Gusts also may be slightly elevated within the strongest storms.
- **Sea fog risks will remain in play through late week. See slides below for additional information.**



**Radar/NWS Alerts: 2:05 PM CT**

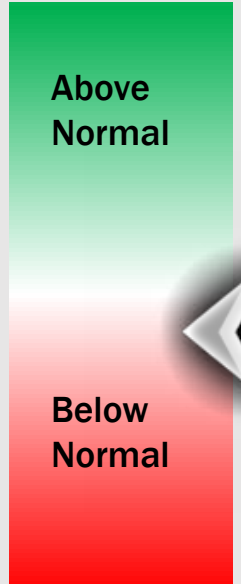
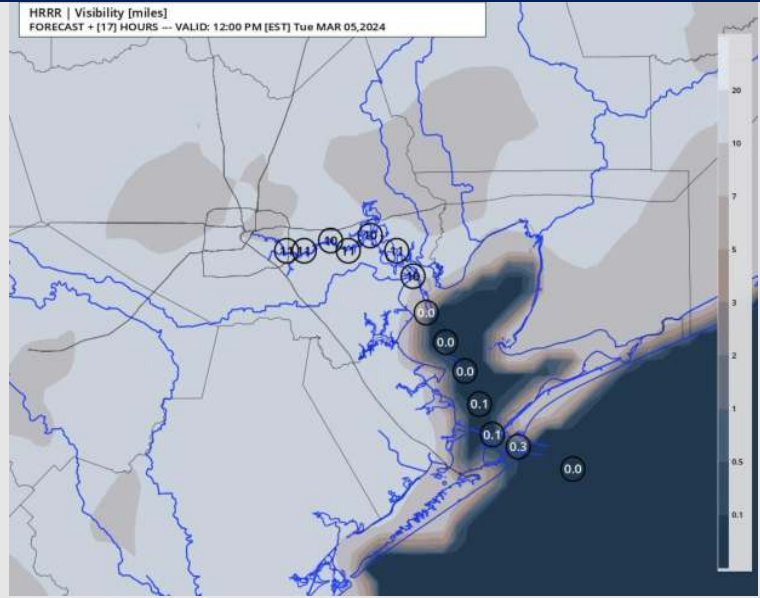
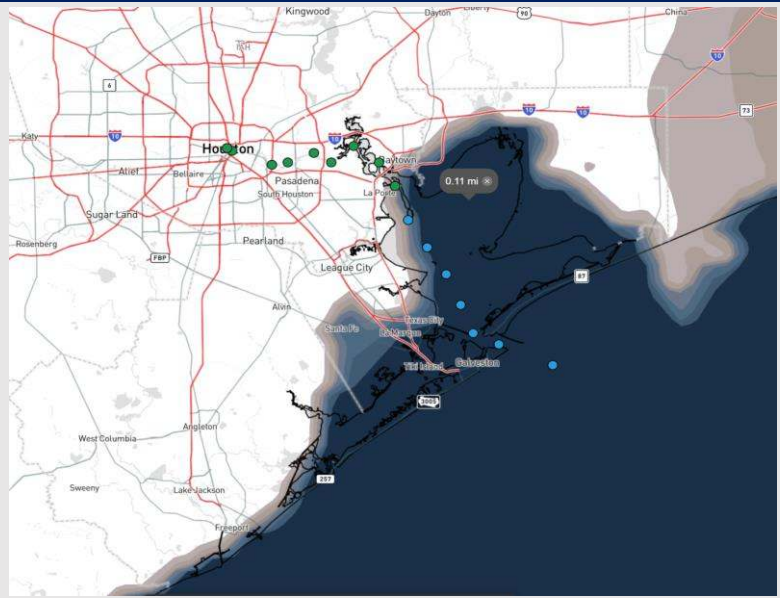


As always, please do not hesitate to reach out to us with any forecast questions via the chat option on Clarity or our on-call number, **(317)-560-8122** press 1 for forecast questions.

# Houston Pilots Visibility Report



## CURRENT VIS. as of 8:20 PM CT      11 AM CT TUE VISIBILITY      Confidence



TIMEFRAME DISCUSSED	THREAT
Current - 11 AM TUE	MED - HIGH

- Dense / patchy dense fog is expected to be a continued risk across the Galv. Bay / Houston Metro region throughout the evening, overnight and into tomorrow. Scattered showers and storms will bring opportunities to break this fog up, causing it to be patchier in nature at times, however the threat may not completely exit until late Fri / early Sat when the winds shift out of the NNW.
- Light winds out of the ESE are keeping dense sea fog around, reducing visibilities to 0.75 mile or less for stations S of Morgan's Point in a patchy to widespread fashion. South of Station 11/12 to the Boarding Station continues to see visibilities dropping to 0.25 mile. This fog risk will only continue to be patchier N of Morgan's point.
- Fog will remain widespread and dense through the overnight, becoming patchier once again for stations N of 11/12 by 11 AM Tuesday. Winds are currently favored to be very light to near calm by 12PM-CT Tuesday. This brings a low-end chance of some breaks in the fog, but still favoring patchy dense fog to linger for stations N of 11/12.
- Slightly lower confidence remains, but overall, at this time we are not seeing a guaranteed time slot for clear visibility this evening and/or tomorrow.

# Houston Pilots Extended Range Visibility Report



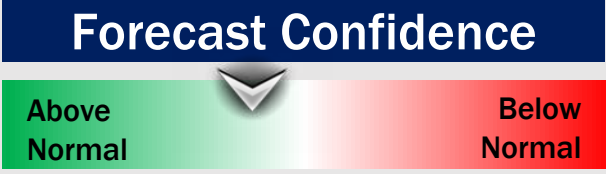
## Thursday 3/7/24

Winds expected to remain calmer and out of the SE, making for favorable conditions for sea fog formation in the AM.



## Friday 3/8/24

Not favoring a fog risk for Friday.



## Saturday 3/9/24

Calm winds after Friday rains can allow for fog formation SAT AM. .



## Chance for Fog

Thursday AM	Possible
Thursday PM	Unlikely
Friday AM	Unlikely
Friday PM	Unlikely
Saturday AM	Possible
Saturday PM	Unlikely

# Houston Pilots Visibility Chart (miles)



## Forecast Confidence



Time	Mon 3pm	Mon 4pm	Mon 5pm	Mon 6pm	Mon 7pm	Mon 8pm	Mon 9pm	Mon 10pm	Mon 11pm	Tue 12am	Tue 1am	Tue 2am	Tue 3am	Tue 4am	Tue 5am	Tue 6am	Tue 7am	Tue 8am	Tue 9am	Tue 10am	Tue 11am	Tue 12pm	Tue 1pm	Tue 2pm	
610 Bridge	10	10	10	10	10	7	3	2	0.5	0.3	0.3	0.3	0.3	0.3	0.3	0.2	0.2	0.2	0.2	0.2	5	9	10	10	10
Kinder 1	10	10	10	10	10	4	3	0.5	0.3	0.3	0.3	0.3	0.3	0.3	0.2	0.2	0.2	0.2	0.2	4	9	10	10	10	
Greens Bayou	10	10	10	10	2	4	1	0.5	0.3	0.3	0.3	0.3	0.3	0.3	0.2	0.2	0.2	0.2	0.2	4	9	10	10	10	
Shell Crude	10	10	10	10	2	4	1	0.5	0.3	0.3	0.3	0.3	0.3	0.3	0.2	0.2	0.2	0.2	0.2	4	8	10	10	10	
Lynchburg Ferries	10	10	10	2	2	2	1	0.5	0.3	0.3	0.3	0.3	0.3	0.3	0.2	0.2	0.2	0.2	0.2	4	8	10	10	10	
Exxon 3	6	10	6	2	2	2	1	0.5	0.3	0.3	0.3	0.3	0.3	0.3	0.2	0.2	0.2	0.2	0.2	4	8	10	10	10	
Morgans Point	6	6	2	2	2	2	1	0.5	0.3	0.3	0.3	0.3	0.3	0.3	0.2	0.2	0.2	0.2	0.2	4	8	10	10	10	
75/76	6	6	2	2	2	2	1	0.8	0.5	0.5	0.3	0.3	0.3	0.3	1	1	0.2	0.2	1	5	7	8	8	8	
63/64	6	6	2	2	2	2	1	0.8	0.5	0.5	0.3	0.3	0.3	0.3	0.7	0.7	0.2	0.2	0.7	4	6	8	8	8	
51/52	1	4	2	2	2	2	1	0.8	0.5	0.5	0.3	0.3	0.3	0.3	0.2	0.2	0.2	0.2	0.2	4	4	7	6	6	
37/38	1	4	2	2	2	2	1	0.8	0.5	0.5	0.3	0.3	0.3	0.3	0.2	0.2	0.2	0.2	0.2	2	2	6	5	4	
25/26	1	4	2	2	2	2	1	0.8	0.5	0.3	0.3	0.3	0.3	0.3	0.2	0.2	0.2	0.2	0.2	1	1	4	4	4	
11/12	1	3	2	2	2	2	1	0.5	0.5	0.3	0.3	0.3	0.3	0.3	0.2	0.2	0.2	0.2	0.2	0.2	0.2	2	2	1	
1 & 2 Bravo	1	3	2	2	2	2	1	0.5	0.5	0.3	0.3	0.3	0.3	0.3	0.2	0.2	0.2	0.2	0.2	0.2	0.2	0.2	0.2	0.2	

**NOTE: This is automated data that may/may not agree with the official BAM thinking that's found on the daily slides or special visibility report slides. This data should be used as a guide only**

# Houston Pilots Wind Chart



## Forecast Confidence



Sustained wind 13 Knots  
Gusts 18 Knots  
Wind from the N

## Example

WS: 13  
G:18  
N

Time Knots	Mon 3pm	Mon 4pm	Mon 5pm	Mon 6pm	Mon 7pm	Mon 8pm	Mon 9pm	Mon 10pm	Mon 11pm	Tue 12am	Tue 1am	Tue 2am	Tue 3am	Tue 4am	Tue 5am	Tue 6am	Tue 7am	Tue 8am	Tue 9am	Tue 10am	Tue 11am	Tue 12pm	Tue 1pm	Tue 2pm
610 Bridge	5	6	6	5	5	5	5	3	4	4	3	2	2	3	2	3	3	3	5	4	5	4	5	5
	10	9	10	10	9	8	7	6	7	9	5	4	4	5	4	5	5	6	9	8	8	8	9	10
	SE	SSE	SE	SE	SE	SE	SE	SE	SE	SE	SE	SE	SE	SSE	SSE	SW	S	W	NW	W	WSW	W	WNW	NW
Kinder 1	5	6	6	5	5	5	5	3	3	5	3	2	3	3	3	3	3	3	5	4	5	4	5	5
	10	9	10	10	9	8	7	7	7	9	5	4	4	5	5	5	5	6	9	8	8	8	9	10
	SE	SSE	SE	SE	SE	SE	SE	SE	SE	SE	SE	SSE	SE	SSE	SSE	SW	SW	W	NW	W	W	W	WNW	NW
Greens Bayou	6	6	6	5	5	5	5	3	3	5	3	3	3	3	3	3	3	3	5	4	5	4	5	5
	11	9	10	10	9	7	7	7	7	9	6	5	4	4	5	5	5	6	9	8	8	8	9	11
	SE	SE	SE	SE	SE	SE	SE	SE	SE	ESE	SE	SSE	SSE	S	S	WSW	WNW	W	NW	W	WSW	W	NW	NW
Shell Crude	6	6	6	5	5	4	4	3	3	5	3	3	3	3	3	3	3	3	5	4	4	4	5	5
	11	10	10	11	9	8	7	7	7	9	6	5	5	4	5	5	6	9	8	8	8	9	9	10
	SE	SE	SE	SE	SE	SE	SE	SE	SE	ESE	SE	SSE	SSE	SSE	S	WSW	W	W	NW	W	WSW	W	NW	NW
Lynchburg Ferries	6	6	6	5	5	4	4	3	3	4	3	3	3	3	3	3	3	3	5	4	4	4	5	5
	11	10	10	10	9	8	7	7	6	8	6	5	5	5	5	5	7	9	9	8	8	8	9	10
	SSE	SE	SE	SE	SE	SE	SE	SE	SE	SE	ESE	SSE	SSE	S	SSW	WSW	W	W	NW	W	W	W	W	WNW
Exxon 3	7	7	7	7	6	6	6	4	4	5	3	3	3	3	3	3	3	4	5	5	5	5	5	5
	12	12	11	11	10	9	9	7	7	8	7	6	6	6	5	6	6	7	9	10	9	9	10	11
	SSE	SE	SE	SE	SE	SE	SE	SE	SE	SE	SE	SSE	SSE	SSE	SSW	SW	NW	W	NW	NNW	W	WNW	WNW	WNW
Morgans Point	7	7	7	7	6	5	5	4	4	4	4	3	3	3	3	3	3	3	4	5	5	5	5	5
	11	11	10	10	9	9	8	8	8	9	8	6	5	5	6	5	5	7	8	10	9	9	10	10
	SE	SE	SE	SE	SE	SE	SE	ESE	SE	SE	SE	SSE	SSE	SSE	S	SSW	WSW	W	NW	NNW	SW	W	W	S
75/76	9	9	9	9	9	8	8	6	6	7	6	5	3	3	3	4	4	5	5	5	5	5	6	7
	13	14	14	13	13	12	12	9	8	10	9	7	4	5	5	6	6	7	9	11	11	11	12	13
	SE	SE	SE	SE	SE	SE	SE	SE	SE	SE	SE	SSE	S	SSE	S	SSW	SSW	W	WNW	NNE	E	S	SSE	SSE
63/64	9	9	9	9	8	7	7	6	5	6	6	5	3	3	3	3	3	5	5	5	5	5	6	6
	13	13	13	12	12	11	10	9	8	9	8	6	4	5	4	5	5	8	8	11	11	11	12	13
	SE	SE	SE	SE	SE	SE	SE	SSE	SE	SE	SE	SSE	SSE	SSE	S	SW	SSW	WSW	NW	NNE	NE	SSW	SSE	SSE
51/52	7	7	8	7	7	6	6	5	5	5	5	4	3	3	2	2	3	4	5	5	5	5	5	5
	12	11	12	11	10	9	8	8	7	7	8	5	5	4	4	4	5	8	9	11	11	11	11	11
	SE	ESE	SE	SE	SE	SE	SE	SE	SE	SE	SE	SE	SSE	S	S	SSW	NNW	SW	NW	N	NE	NE	ESE	SE
37/38	7	7	7	7	6	5	5	5	5	5	4	3	2	2	2	2	3	4	5	5	5	5	5	5
	11	11	11	10	9	8	8	8	7	7	8	5	5	4	4	4	5	8	9	11	10	10	10	11
	SE	ESE	SE	SE	SE	SE	SE	SSE	SE	SE	SE	SE	SSE	S	S	SSW	NW	SW	NW	NNW	NE	NE	ESE	SE
25/26	7	7	7	6	5	5	5	5	4	5	5	3	3	2	2	2	3	4	5	5	5	5	6	6
	11	10	9	9	8	7	8	8	6	7	7	5	5	4	4	4	8	9	9	10	10	10	10	10
	ESE	ESE	ESE	SE	SE	SE	SE	SSE	SE	SE	SE	SSE	SSE	S	S	SSW	NW	WNW	WNW	NW	NNE	NNE	ESE	SE
11/12	7	7	5	5	4	4	3	3	4	4	4	3	3	2	2	2	2	3	4	5	5	5	6	6
	10	9	8	8	7	6	7	6	7	7	6	5	4	4	4	4	6	7	8	9	9	8	9	9
	ESE	ESE	ESE	ESE	ESE	ESE	SE	SE	SE	SE	SE	S	SE	S	SE	WSW	NNW	N	W	NNW	ENE	SSE	SE	SE
1 & 2 Bravo	7	7	7	7	7	6	7	7	7	7	7	6	5	4	4	3	3	5	5	5	5	5	5	5
	11	11	10	10	10	9	9	10	10	9	10	9	9	7	7	6	6	8	10	10	11	9	9	9
	ESE	ESE	ESE	ESE	ESE	ESE	ESE	SE	SSE	SE	SE	SE	SSE	S	S	WSW	WNW	N	N	NNW	N	NNW	SSE	SSE

NOTE: This is automated data that may/may not agree with the official BAM thinking that's found on the daily slides or special visibility report slides. This data should be used as a guide only

# Houston Pilots: Mon. 3/4/2024



## Forecast Discussion

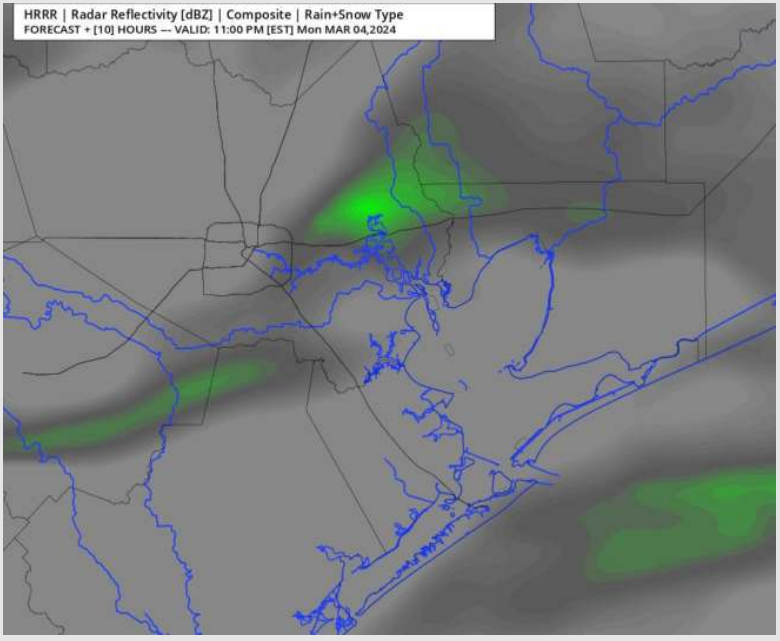
**Precip:** Scattered showers/storms (30-40%) will decrease in coverage after 6 PM to be hit/miss. This light hit and miss chances then favored to continue for the rest of the evening. Lightning and small hail cannot be ruled out with these storms.

**Wind:** Winds will be out of the S/SE throughout the day. **N Morgan's Point:** 3-8 kts throughout the rest of the day. **S of Morgan's Point:** Winds will remain at 8-13 kts through 8 PM. After 8 PM, winds will drop to 3 - 8 kts for the evening. **Wind gusts of 13 - 18 kts will be possible throughout the rest of the evening. The greatest risk for a gust up to 20 kts will be at the Boarding Station.**

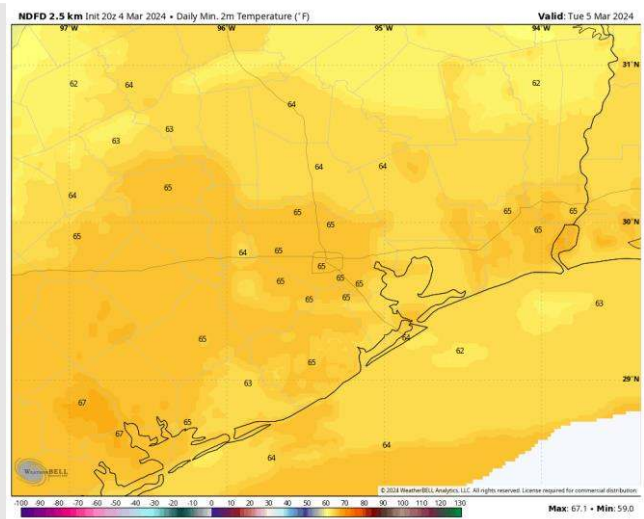
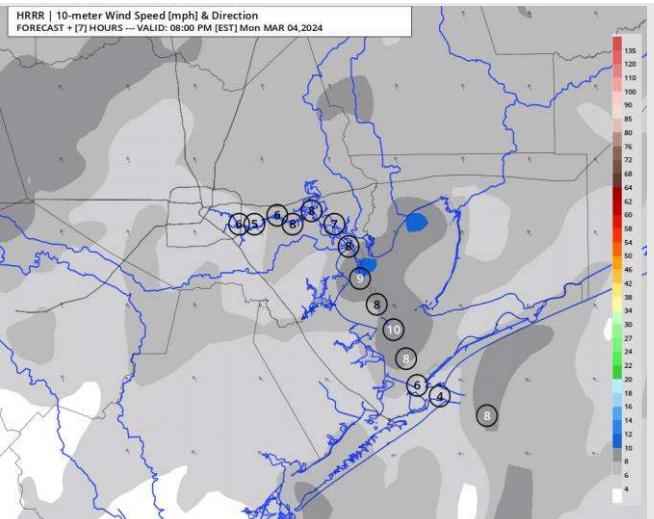
**Low Temps:** **N of Morgan's Point:** Mid 60's F. **S of Morgan's Point:** Low 60s F.

**Visibility:** Patchy dense fog will continue to become more widespread throughout the evening. See visibility slide for more details on coverage and impacts.

## Precip Image: 10 PM CT



**Wind Speed:  
7 PM CT**



**Low Temps  
TUE AM**

# Houston Pilots: Tue. 3/5/2024



## Forecast Discussion

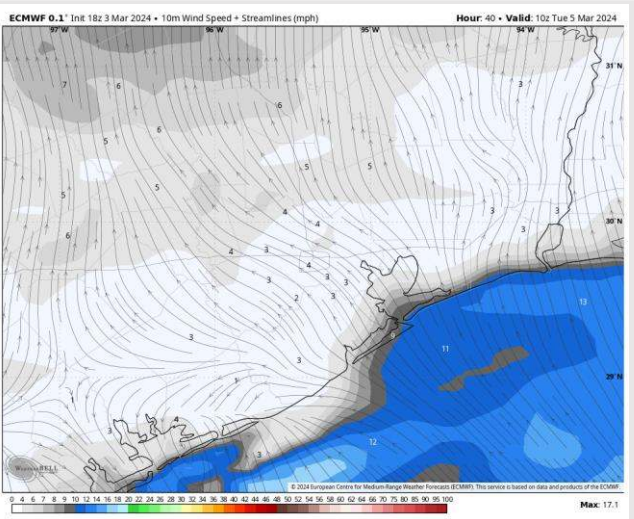
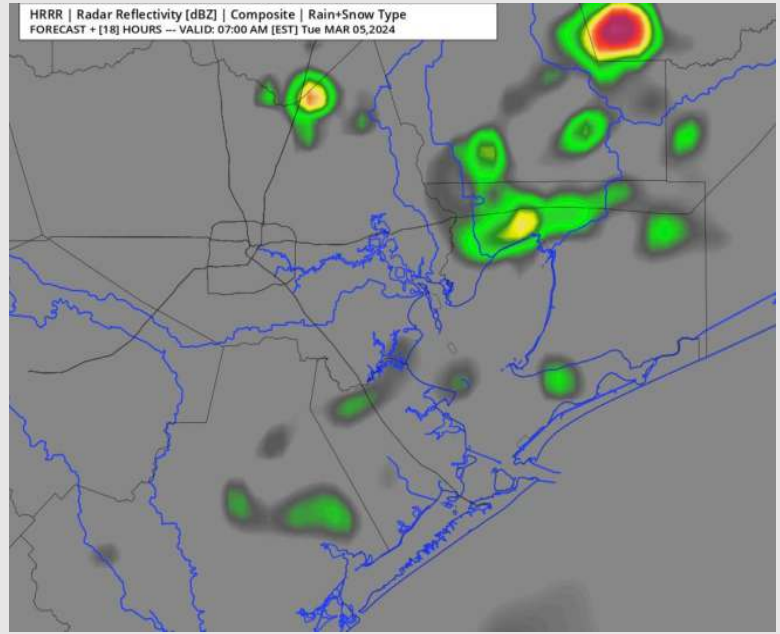
**Precip:** An advancing front will bring showers and storms through 8-9 AM. Main risks with storms will be lightning and small hail. Isolated showers will then continue through 5 PM.

**Wind:** Winds will be variable through much of the day, settling out of the SW by 7 PM. **N of Morgan's Point:** Winds at 3 - 7 kts throughout Tuesday. **S of Morgan's Point:** Winds slightly elevated at 7-12 kts through 4 AM with the passing front, but will calm to 4-8 kts thereafter. **With the passage of the front wind gusts of 20 - 25 kts will be possible between 4AM - 9AM. Although the risk is generally low, we cannot rule out thunderstorm induced wind gusts of 40 - 45 MPH tp be possible.**

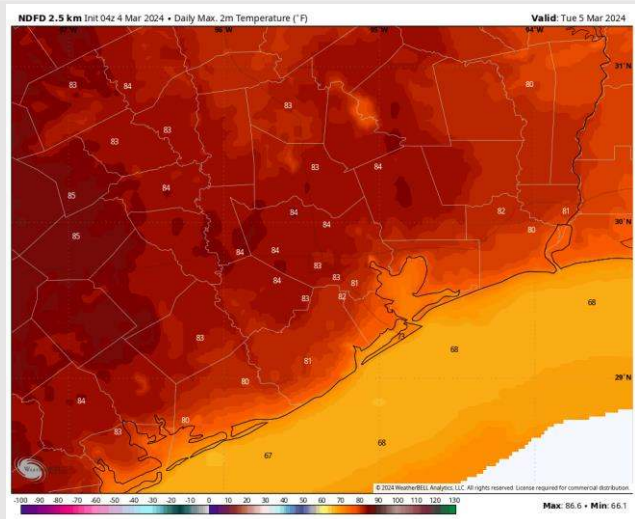
**High Temps:** **N of Morgan's Point:** Low 80s F. **S of Morgan's Point:** Low 70s-Upper 60s F.

**Visibility:** Patchy to widespread dense fog will be a risk throughout the morning. Visibility will slightly improve moving into the early afternoon with the risk possibly becoming dense once again through Tuesday evening.

## Precip Image: 7 AM CT



Wind Speed:  
4 AM CT



High Temps  
Tuesday

## Forecast Discussion

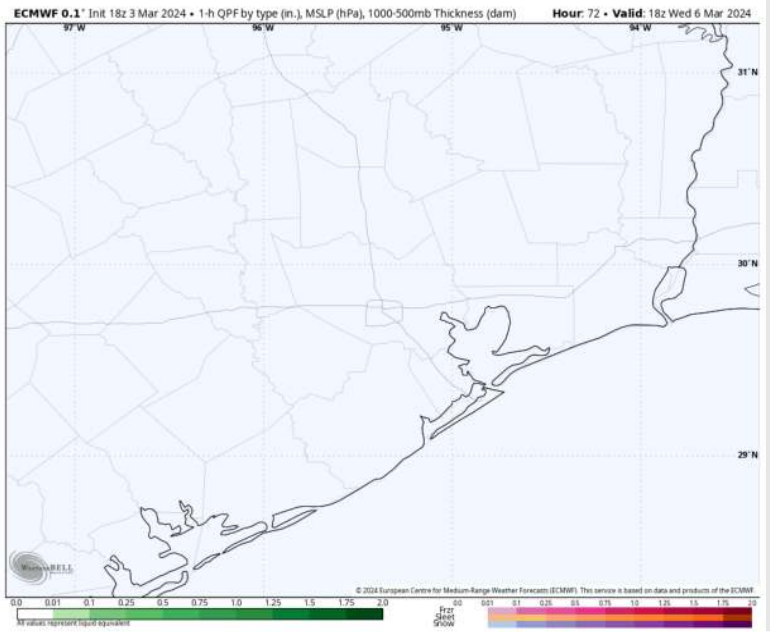
**Precip:** Dry conditions favored for Wednesday.

**Wind:** Winds out of the SW initially will become variable by 3 AM, then settle out of the S/SE by 4 PM. **N Morgan's Point:** 2-7kts throughout the day. **S of Morgan's Point:** Winds at 4 - 9 kts throughout the day.

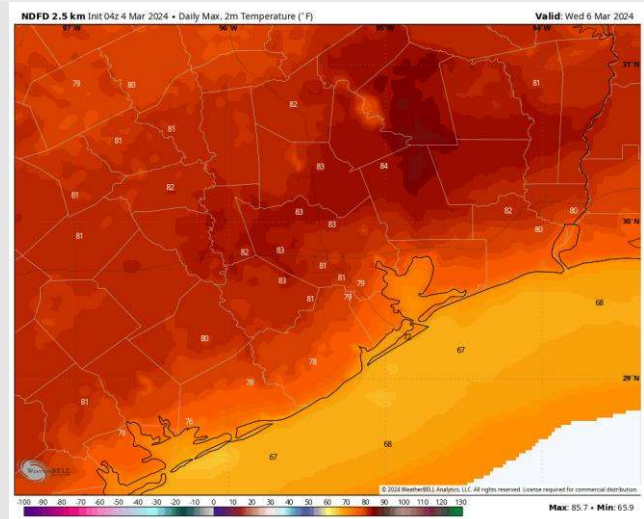
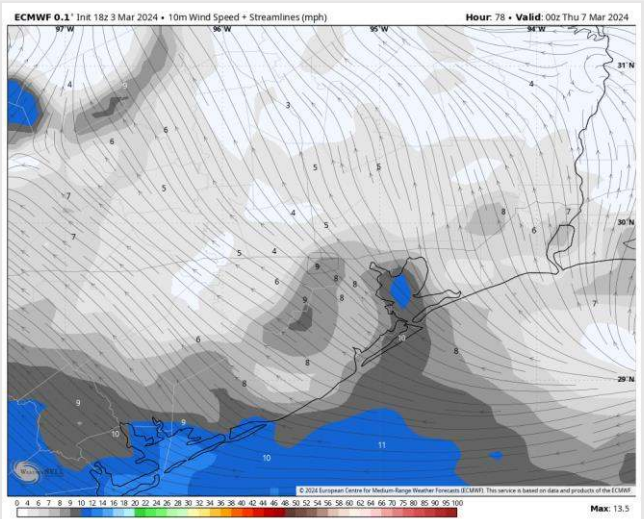
**High Temps:** **N of Morgan's Point:** Upper 70s-Low 80s F. **S of Morgan's Point:** Upper 60s-Low 70s F.

**Visibility:** Lower confidence at this time, but calm wind out of the SW WED AM can make adequate conditions for sea fog formation.

## Precip Image: 12 PM CT



Wind Speed:  
6 PM CT



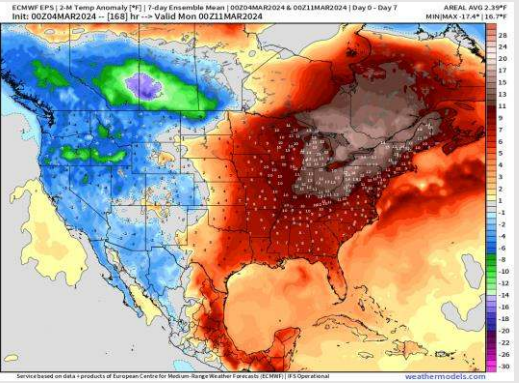
High Temps  
Wednesday



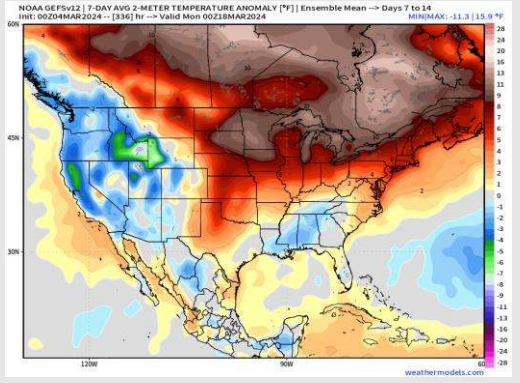
# Houston Pilots: 3/4/2024



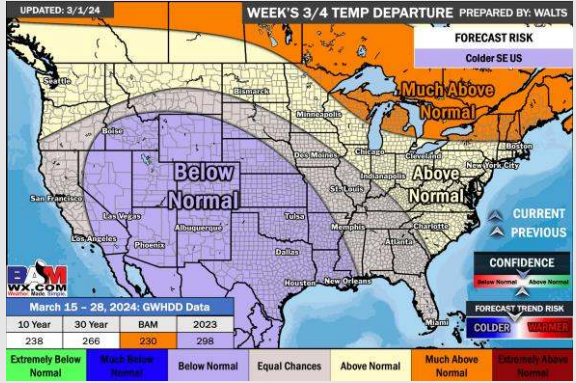
## Next 7 Day Temperature Departure



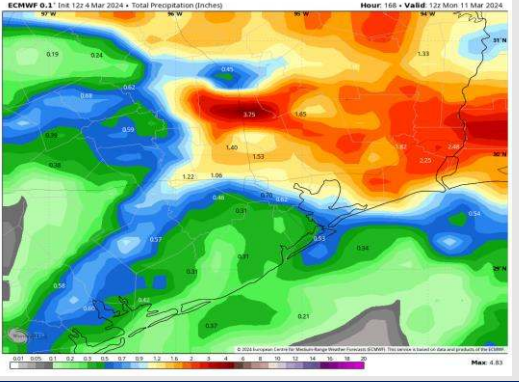
## 8-14 Day Temperature Departure



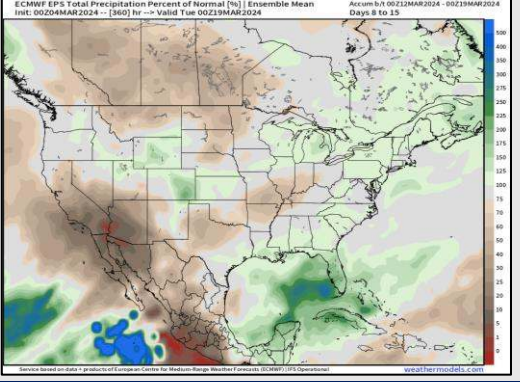
## 15-30 Day Temperature Departure



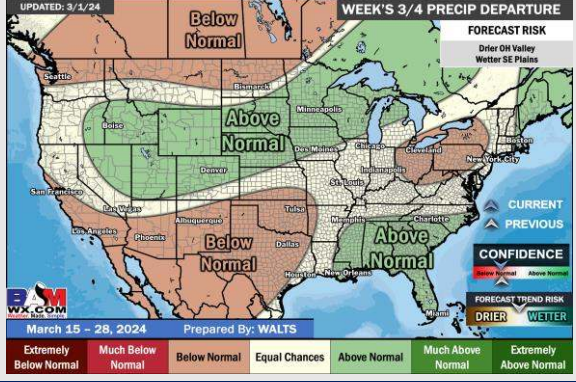
## Next 7 Day Total Precipitation



## 8-14 Day % of Average Precip.



## 15-30 Day % of Average Precip.



- Scattered rain chances continue today and tomorrow. Above normal temperatures favored for the week ahead.
- Slightly above normal precipitation chances are at play during the week 2 timeframe. Temps expected to be seasonable to slightly above normal.
- Below normal temperatures and seasonable chances for precipitation are favored in the weeks 3/4 timeframe.