

Houston Pilots Forecast Package



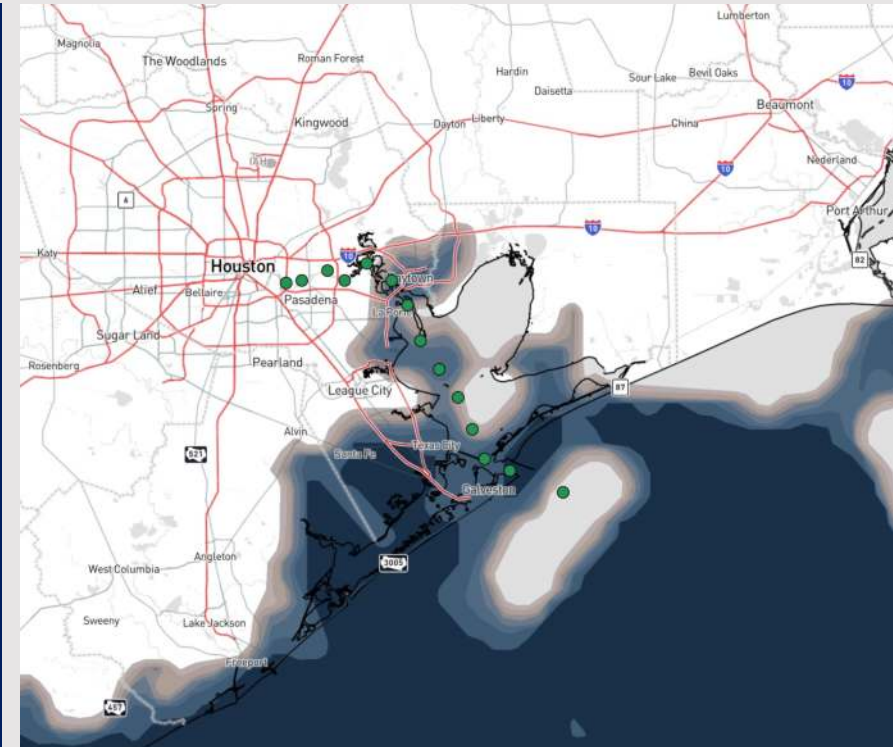
Updated: 1:45 AM CT

Thursday, March 14, 2024

Forecaster: John Kemper

Weather Headlines

- Scattered light showers will be possible Thursday PM with the better storm chances pushing in Friday AM. Chances will then continue through the weekend.
- Winds will remain generally mild with non storm related gusts reaching up to 25 kts at times.
- Patchy Fog risks favored for this AM. **See visibility slides for more details.**



Current Radar: 1:30 AM CT

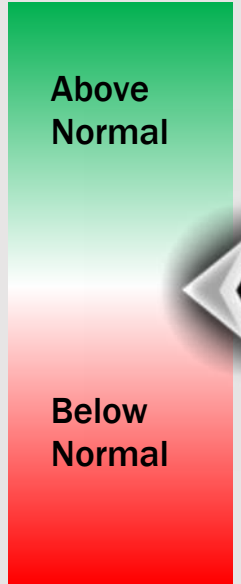
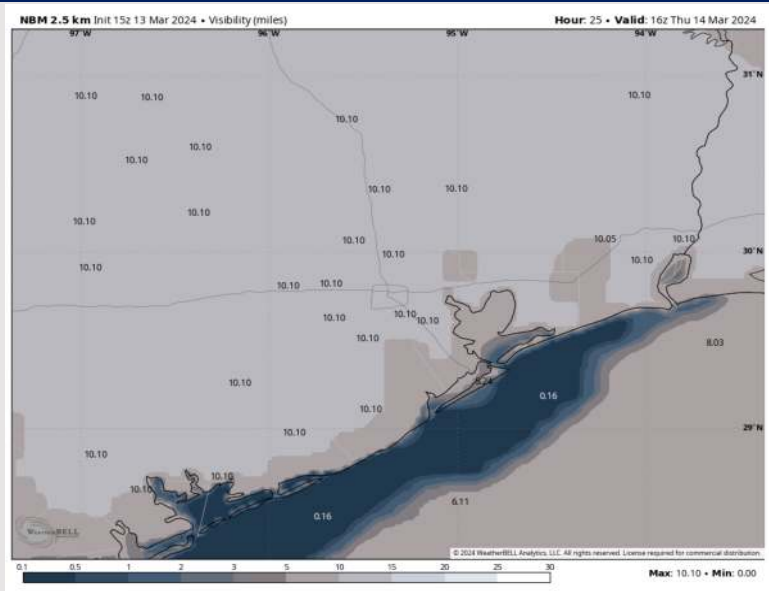
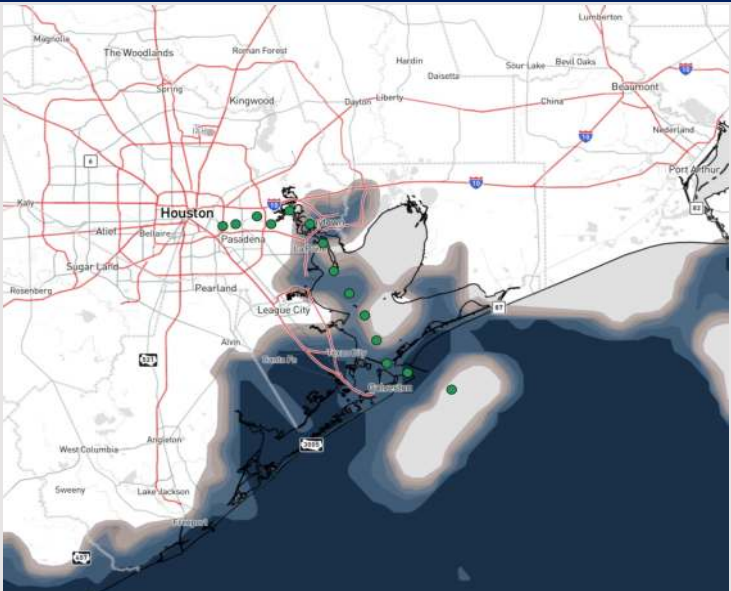


As always, please do not hesitate to reach out to us with any forecast questions via the chat option on Clarity or our on-call number, **(317)-560-8122** press **1** for forecast questions.

Houston Pilots Visibility Report



Current VISIBILITY 11 AM CT THU VISIBILITY Confidence



TIMEFRAME DISCUSSED	THREAT
Now – 12 PM THU	Med

- Patchy dense fog risk is expected to continue through the mid to late AM, impacting all stations S of Morgan’s Point with reduced visibilities of 1 -2 miles. Localized instances of visibilities of below 1 mile can’t be ruled out, especially for 11/12 and the Boarding Station.
- Stations N of Morgan’s Point still not favored to see anything more than drizzle and hazy conditions, briefly reducing visibility to 3 – 5 miles at times throughout the morning. Lower confidence on exact timeframe of when this will be favorable; Approximately 6 – 9 AM.
- Fog risks will begin to recede after 10 – 11 AM CT, becoming more patchy in nature for all stations. By 1 PM, anticipating this fog risk to have cleared up for all stations, including 11/12 and the boarding station. A low cloud deck / haze may continue for these two stations in particular.
- Overall, this forecast still has some lower confidence as drizzle and slightly elevated winds are expected to continue for the duration of the period.

Houston Pilots Extended Range Visibility Report



Sunday 3/17/24

Fog is not favored for SUN.

Forecast Confidence



Tuesday 3/19/24

Fog is not favored for Tue.

Forecast Confidence



Monday 3/18/24

Fog is not favored for Mon.

Forecast Confidence



Chance for Fog

Sunday AM	Unlikely
Sunday PM	Unlikely
Monday AM	Unlikely
Monday PM	Unlikely
Tuesday AM	Unlikely
Tuesday PM	Unlikely

Houston Pilots Visibility Chart (miles)



Forecast Confidence



Time	Thu 2am	Thu 3am	Thu 4am	Thu 5am	Thu 6am	Thu 7am	Thu 8am	Thu 9am	Thu 10am	Thu 11am	Thu 12pm	Thu 1pm	Thu 2pm	Thu 3pm	Thu 4pm	Thu 5pm	Thu 6pm	Thu 7pm	Thu 8pm	Thu 9pm	Thu 10pm	Thu 11pm	Fri 12am	Fri 1am	
610 Bridge	3	5	4	6	6	6	3	4	10	10	10	10	10	10	10	10	8	5	5	5	5	5	5	5	5
Kinder 1	1	3	4	6	6	6	3	4	10	10	10	10	10	10	10	10	8	5	5	5	5	5	5	5	5
Greens Bayou	0.7	1	1	0.7	3	2	3	2	7	6	10	10	10	10	10	10	8	5	6	5	5	5	5	5	5
Shell Crude	0.7	1	1	0.7	3	2	1	2	6	4	10	10	10	10	10	10	8	5	5	5	5	5	5	5	5
Lynchburg Ferries	0.7	1	1	0.7	0.7	1	0.8	1	5	2	6	10	10	10	10	10	9	6	6	5	5	5	5	5	5
Exxon 3	0.7	1	0.7	0.5	0.5	0.5	0.5	1	4	2	2	10	10	10	10	10	8	5	5	5	5	5	5	5	5
Morgans Point	0.7	0.7	0.7	0.5	0.5	0.5	0.5	1	1	2	2	10	10	10	10	9	6	5	5	5	5	5	5	5	5
75/76	0.7	0.7	0.5	0.5	0.7	0.5	0.5	0.5	1	1	2	10	7	6	9	8	7	4	6	8	8	8	8	8	8
63/64	0.7	0.7	0.5	0.5	0.7	0.5	0.5	0.5	1	1	2	10	7	6	9	8	6	5	7	8	8	8	8	8	8
51/52	0.7	1	0.5	0.5	0.7	0.5	0.5	0.5	1	1	3	7	6	6	8	5	4	7	8	8	8	8	8	8	8
37/38	0.7	1	0.5	0.5	0.5	0.5	0.5	0.5	1	1	9	7	6	6	8	5	4	8	8	8	8	8	8	8	8
25/26	0.7	0.7	0.5	0.5	0.5	0.5	0.5	0.5	1	1	9	7	6	6	8	5	4	8	8	8	8	8	8	8	8
11/12	0.7	0.5	0.5	0.5	0.5	0.5	0.5	0.5	1	1	4	7	6	6	8	5	5	8	8	8	8	8	8	8	8
1 & 2 Bravo	0.7	0.2	0.5	0.5	0.5	0.8	0.5	0.3	0.5	1	4	6	5	5	8	6	7	8	8	8	8	8	8	8	8

NOTE: This is automated data that may/may not agree with the official BAM thinking that's found on the daily slides or special visibility report slides. This data should be used as a guide only

Houston Pilots Wind Chart



Forecast Confidence



Example

Sustained wind 13 Knots
Gusts 18 Knots
Wind from the N

WS: 13
G:18
N

Time Knots	Thu 2am	Thu 3am	Thu 4am	Thu 5am	Thu 6am	Thu 7am	Thu 8am	Thu 9am	Thu 10am	Thu 11am	Thu 12pm	Thu 1pm	Thu 2pm	Thu 3pm	Thu 4pm	Thu 5pm	Thu 6pm	Thu 7pm	Thu 8pm	Thu 9pm	Thu 10pm	Thu 11pm	Fri 12am	Fri 1am
610 Bridge	11 SSE	10 SSE	10 SSE	10 SSE	9 SSE	9 SSE	9 SSE	10 SSE	11 SSE	12 SSE	13 SSE	13 SSE	14 SSE	13 SSE	13 SSE	13 SSE	13 SSE	12 SSE	11 SSE	11 SSE	10 SSE	10 SSE	9 SSE	9 SSE
Kinder 1	11 SSE	10 SSE	10 SSE	9 SSE	9 SSE	9 SSE	9 SSE	10 SSE	11 SSE	11 SSE	13 SSE	13 SSE	14 SSE	13 SSE	13 SSE	13 SSE	13 SSE	12 SSE	11 SSE	10 SSE	10 SSE	10 SSE	9 SSE	9 SSE
Greens Bayou	10 SSE	11 SSE	9 SSE	9 SSE	9 SSE	9 SSE	9 SSE	9 SSE	10 SSE	11 SSE	12 SSE	13 SSE	13 SSE	13 SSE	13 SSE	13 SSE	12 SSE	11 SSE	11 SSE	10 SSE	10 SSE	10 SSE	9 SSE	8 SSE
Shell Crude	10 SSE	10 SSE	9 SSE	9 SSE	9 SSE	9 SSE	9 SSE	9 SSE	10 SSE	11 SSE	13 SSE	13 SSE	13 SSE	12 SSE	12 SSE	12 SSE	12 SSE	11 SSE	11 SSE	10 SSE	10 SSE	10 SSE	9 SSE	8 SSE
Lynchburg Ferries	11 SSE	11 SSE	9 SSE	9 SSE	9 SSE	9 SSE	9 SSE	9 SSE	10 SSE	12 SSE	13 SSE	13 SSE	13 SSE	13 SSE	13 SSE	12 SSE	11 SSE	11 SSE	9 SSE	9 SSE	9 SSE	9 SSE	9 SSE	7 SSE
Exxon 3	13 SSE	14 SSE	13 SSE	12 SSE	11 SSE	11 SSE	12 SSE	12 SSE	12 SSE	13 SSE	13 SSE	14 SSE	13 SSE	13 SSE	13 SSE	13 SSE	13 SSE	13 SSE	12 SSE	11 SSE	11 SSE	11 SSE	10 SSE	8 SSE
Morgans Point	13 SSE	13 SSE	12 SSE	11 SSE	11 SSE	11 SSE	11 SSE	12 SSE	12 SSE	13 SSE	13 SSE	12 SSE	12 SSE	13 SSE	12 SSE	13 SSE	12 SSE	12 SSE	11 SSE	11 SSE	10 SSE	9 SSE	9 SSE	8 SSE
75/76	16 SSE	15 SSE	14 SSE	15 SSE	15 SSE	14 SSE	14 SSE	14 SSE	14 SSE	15 SSE	14 SSE	15 SSE	14 SSE	13 SSE	13 SSE	14 SSE	15 SSE	15 SSE	15 SSE	14 SSE	12 SSE	13 SSE	12 SSE	11 SSE
63/64	15 SSE	14 SSE	13 SSE	13 SSE	14 SSE	13 SSE	13 SSE	13 SSE	14 SSE	13 SSE	14 SSE	13 SSE	13 SSE	13 SSE	13 SSE	13 SSE	14 SSE	14 SSE	14 SSE	13 SSE	11 SSE	12 SSE	11 SSE	9 SSE
51/52	14 SSE	14 SSE	13 SSE	13 SSE	13 SSE	13 SSE	13 SSE	13 SSE	13 SSE	13 SSE	13 SSE	13 SSE	13 SSE	13 SSE	13 SSE	12 SSE	12 SSE	13 SSE	13 SSE	12 SSE	11 SSE	11 SSE	10 SSE	9 SSE
37/38	14 SSE	14 SSE	13 SSE	12 SSE	13 SSE	13 SSE	13 SSE	13 SSE	13 SSE	13 SSE	13 SSE	13 SSE	13 SSE	13 SSE	13 SSE	12 SSE	12 SSE	13 SSE	12 SSE	12 SSE	11 SSE	11 SSE	10 SSE	9 SSE
25/26	13 SSE	13 SSE	13 SSE	12 SSE	12 SSE	12 SSE	12 SSE	13 SSE	13 SSE	13 SSE	14 SSE	14 SSE	13 SSE	13 SSE	13 SSE	12 SSE	12 SSE	13 SSE	12 SSE	12 SSE	11 SSE	11 SSE	10 SSE	9 SSE
11/12	12 SSE	11 SSE	11 SSE	11 SSE	11 SSE	11 SSE	11 SSE	12 SSE	12 SSE	13 SSE	14 SSE	14 SSE	14 SSE	13 SSE	13 SSE	12 SSE	11 SSE	11 SSE	11 SSE	11 SSE	10 SSE	10 SSE	9 SSE	9 SSE
1 & 2 Bravo	14 SSE	14 SSE	14 SSE	13 SSE	13 SSE	13 SSE	13 SSE	13 SSE	13 SSE	13 SSE	14 SSE	13 SSE	13 SSE	13 SSE	13 SSE	13 SSE	13 SSE	13 SSE	13 SSE	13 SSE	13 SSE	12 SSE	12 SSE	11 SSE

NOTE: This is automated data that may/may not agree with the official BAM thinking that's found on the daily slides. This data should be used as a guide only

Houston Pilots: Thu. 3/14/2024



Forecast Discussion

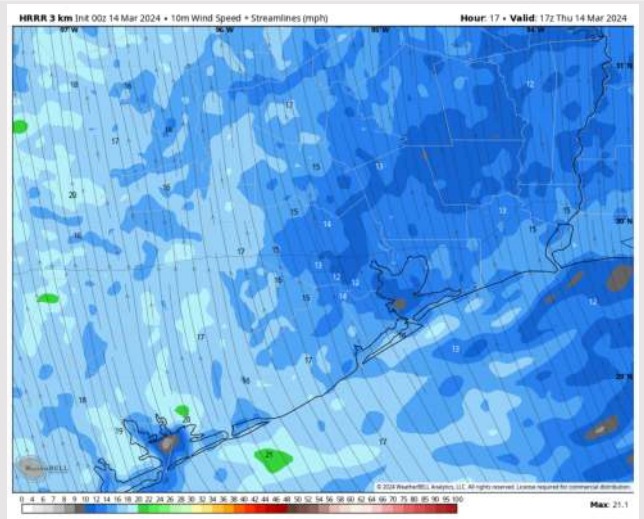
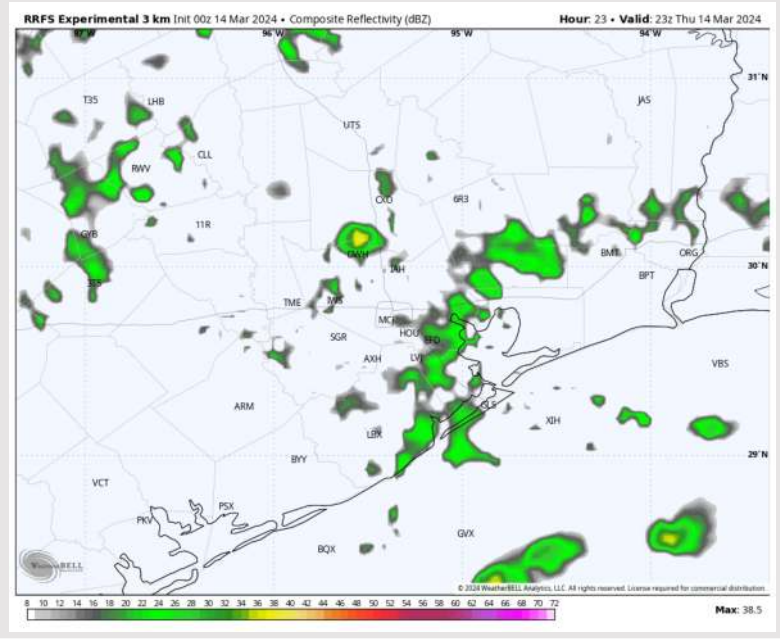
Precip: Isolated light showers will be possible in an "off/on" fashion beyond 6AM through 3PM. From 6PM through 10PM, scattered showers and an isolated storm can't be ruled out.

Wind: Winds will be out of the SSE for the entire day. **N of Morgan's Point:** Winds at 6-11 kts through 10 AM before increasing to 15-20 kts. Winds remain at this clip through 7 PM before decreasing to 5-10 kts. **S of Morgan's Point:** Winds will be at 15-20 kts through 10 PM before decreasing to 12-17 kts. **Wind gusts of 25-35 kts will be possible from 9 AM to 10 PM.**

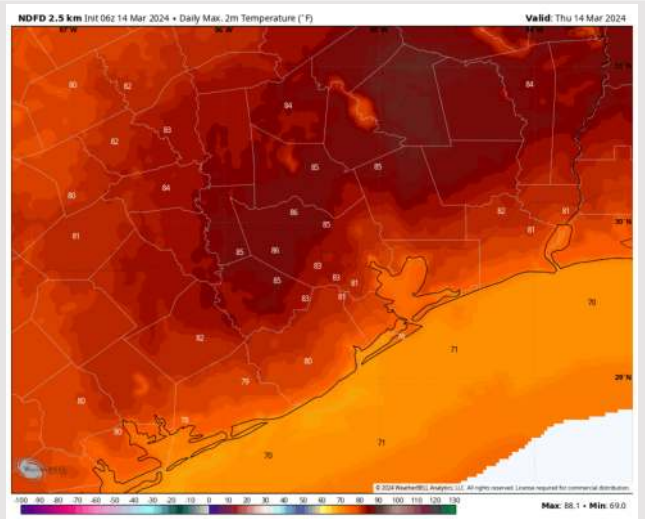
High Temps: **N of Morgan's Point:** Low 80s F. **S of Morgan's Point:** Low to Mid 70's F.

Visibility: Patchy Sea fog risks can't be ruled out, but presence of drizzle and higher winds will be mitigating factor through late AM (See visibility slide for additional details)

Precip Image: 7 PM CT



Wind Speed:
12 PM CT



High Temps
Today

Houston Pilots: Fri. 3/15/2024



Forecast Discussion

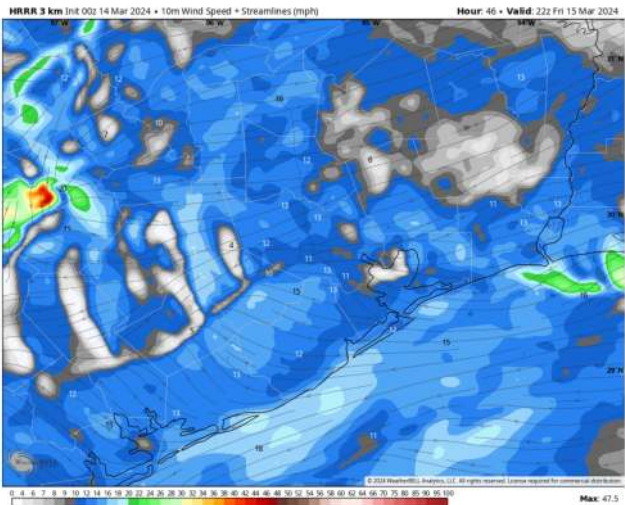
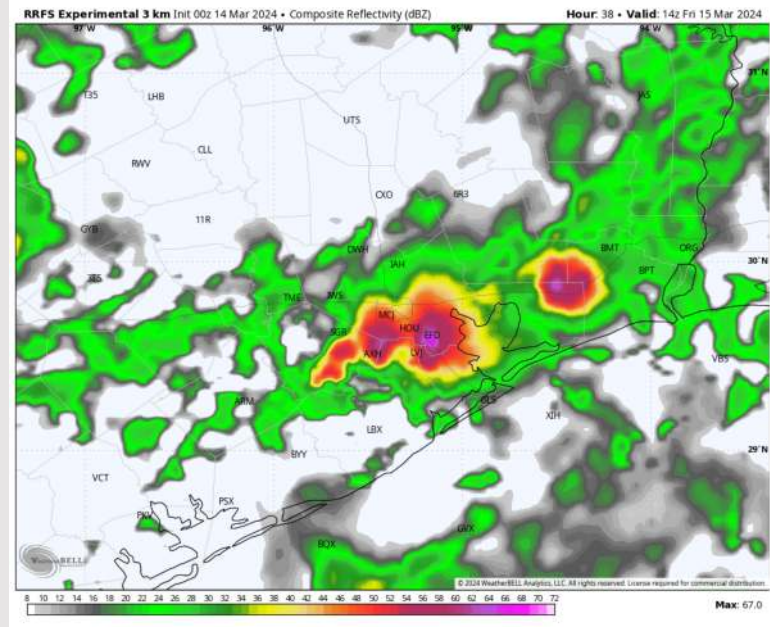
Precip: Showers and storms are favored to increase in coverage beyond 7AM, with a few stronger storms in play as weak front pushes through. During the evening hours, a line of storms likely to impact all stations after 6PM. A few strong to severe storms will be in play with large hail and **damaging wind gusts of 40 - 50 kts.**

Wind: Winds out of the S / SSE throughout the day before veering out of the N immediately following the passage of front / storm line (~10PM). **N Morgan's Point:** Winds at 7 - 13 kts through 10PM, then winds slightly decrease to 5 - 8 kts. **S of Morgan's Point:** 12 - 16 kts expected for the entire day. **Non-thunderstorm gusts of 18 - 23 kts cannot be ruled out throughout the PM prior to passage of front..**

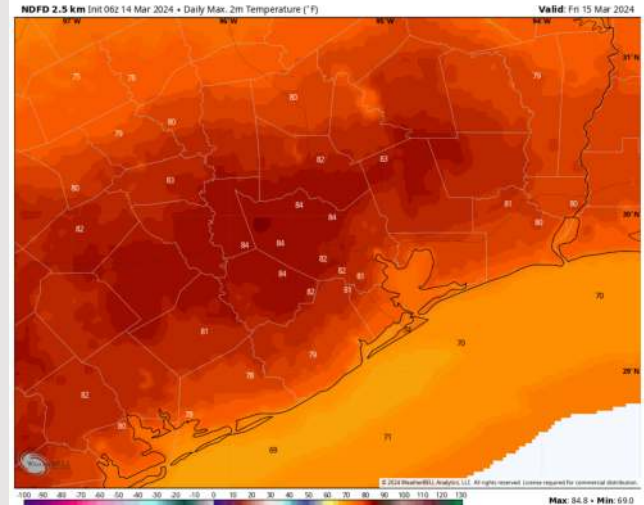
High Temps: **N of Morgan's Point:** Low 80s F. **S of Morgan's Point:** Low to Mid 70s F.

Visibility: Needing to watch timing of precip on FRI, but SE winds would allow for foggy setup behind rain chances. Heavier downpours can result in reduced visibilities as well.

Precip Image: 9 AM CT



Wind Speed
5 PM CT



High Temps
Friday

Houston Pilots: sat. 3/16/2024



Forecast Discussion

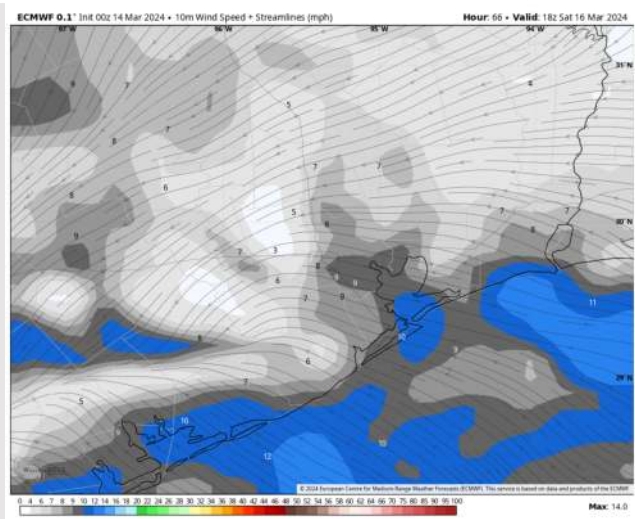
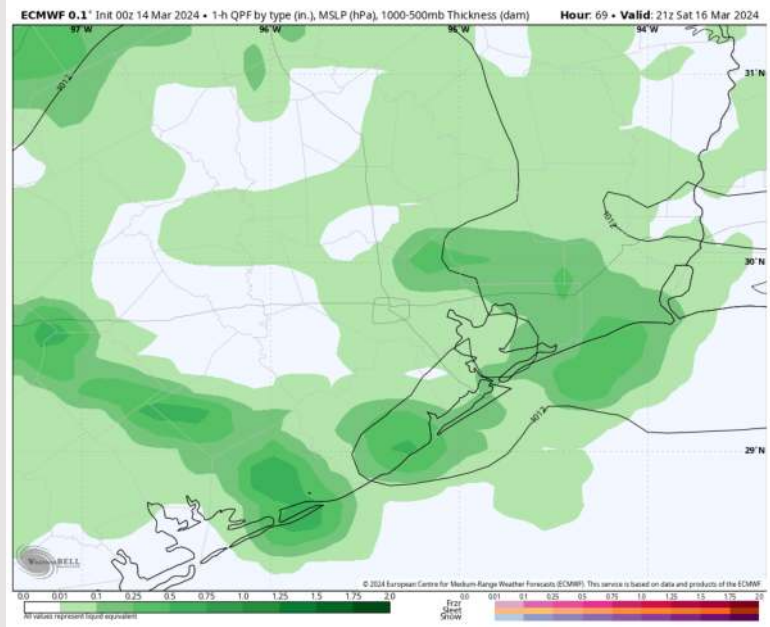
Precip: Scattered to organized pockets of storms from 2PM – 10 PM will be possible. Severe threat appears low, but a few storm gusts of 40 – 50 kts and large hail can't be ruled out. Confidence will increase as we get closer.

Wind: Winds will be out of N before 8AM before returning to out of the ESE / SE. **N Morgan's Point:** Winds expected to remain at 3 - 6 kts through 10AM. After 10AM, winds of 5 – 8 kts will be possible. **S of Morgan's Point:** Winds at 7 - 10 kts will be possible for the entire day. **Wind gusts of 25 kts possible after 3 PM CT for stations S of Morgan's Point.**

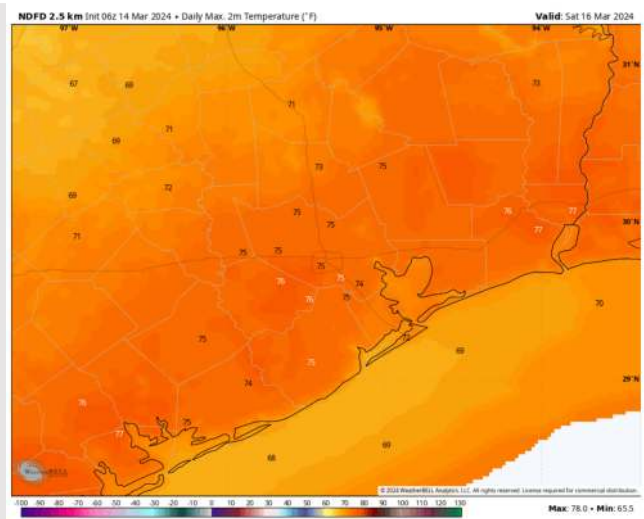
High Temps: **N of Morgan's Point:** Mid 70's F. **S of Morgan's Point:** Upper 60s / Near 70 F .

Visibility: Not anticipating fog risks at this time.

Precip Image: 4 PM CT

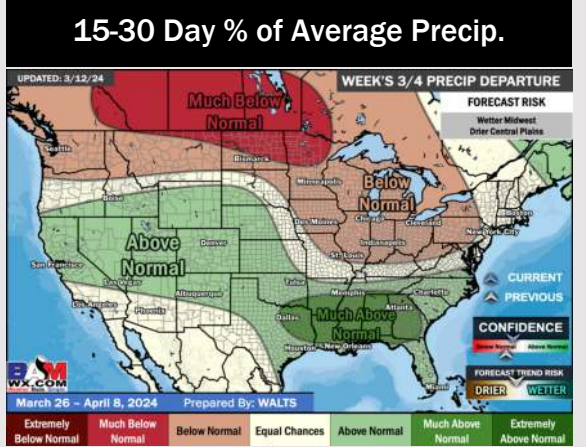
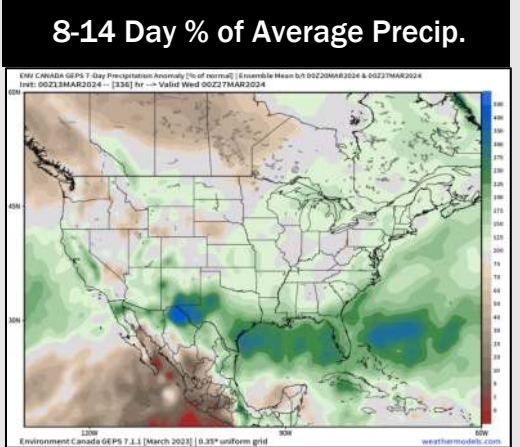
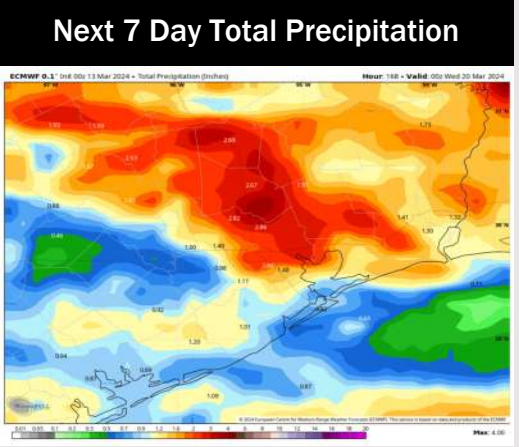
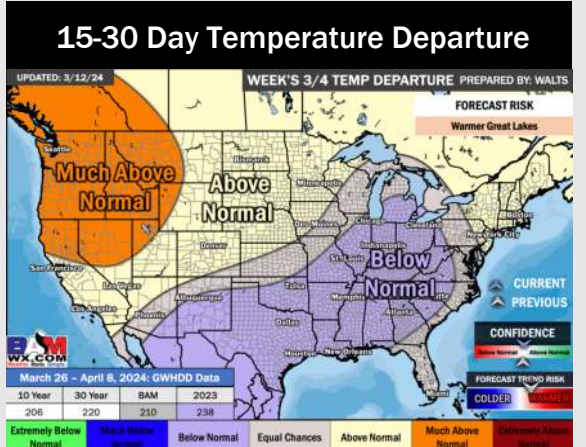
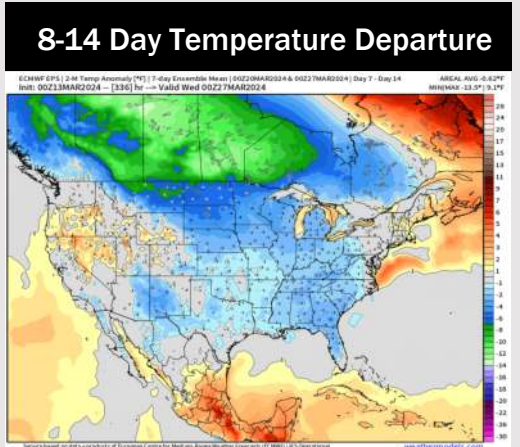
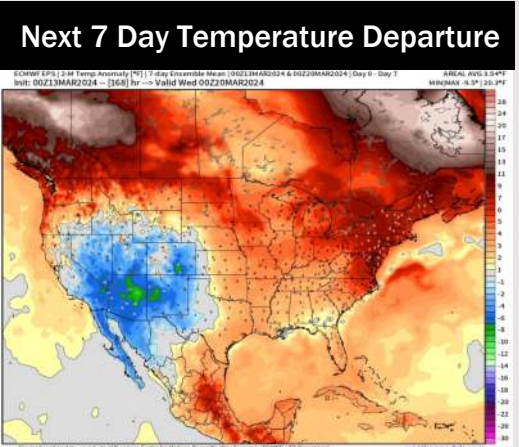


Wind Speed:
1 PM CT



High Temps
Saturday

Houston Pilots: 3/14/24



- Multiple shots of rain/ storms will be possible through the weekend and into next week. Temperatures expected to sit above normal.
- Slightly above normal precipitation chances are at play during the week 2 timeframe. Temps expected to be seasonable to below normal.
- Below normal temperatures and above normal chances for precipitation are favored in the weeks 3/4 timeframe.