

Houston Pilots Forecast Package



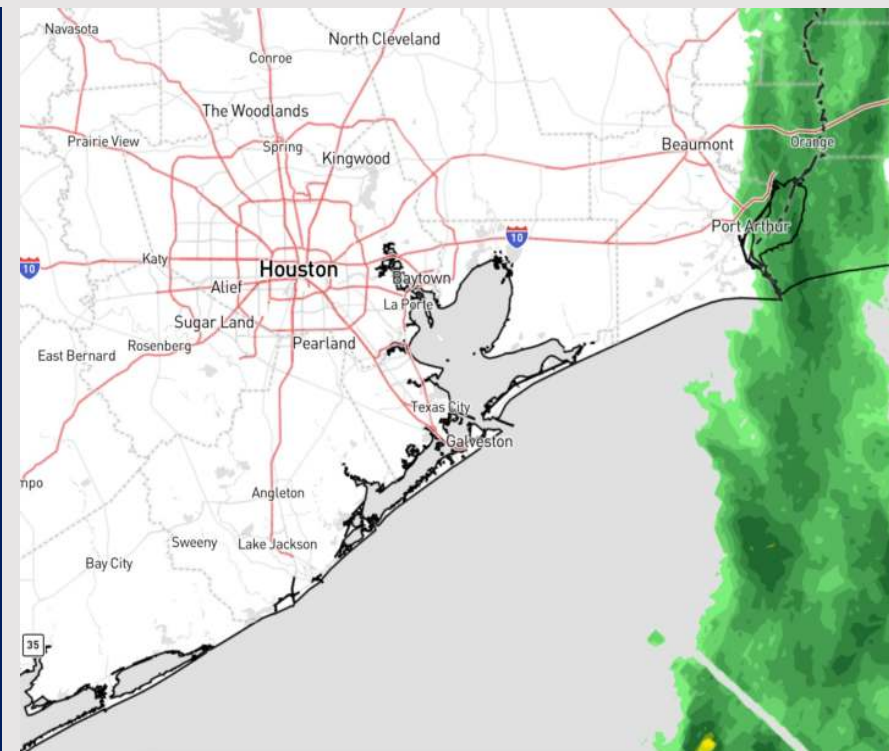
Updated: 1:05 PM CT

Saturday, February 3, 2024

Forecaster: Will Danby

Weather Headlines

- **A low-end fog risk will be at play this evening into the early AM Sunday before sunrise. Check visibility slide for more details.**
- **Winds will become elevated for a period starting Sunday AM - Monday AM. Winds decline into Monday afternoon, but gusts of 25+ kts are possible**
- **Beyond this morning, less active period favored to continue.**



Radar/NWS Alerts: 1:00 PM CT



As always, please do not hesitate to reach out to us with any forecast questions via the chat option on Clarity or our on-call number, **(317)-560-8122** press 1 for forecast questions.

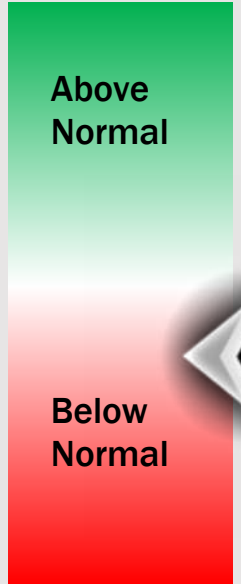
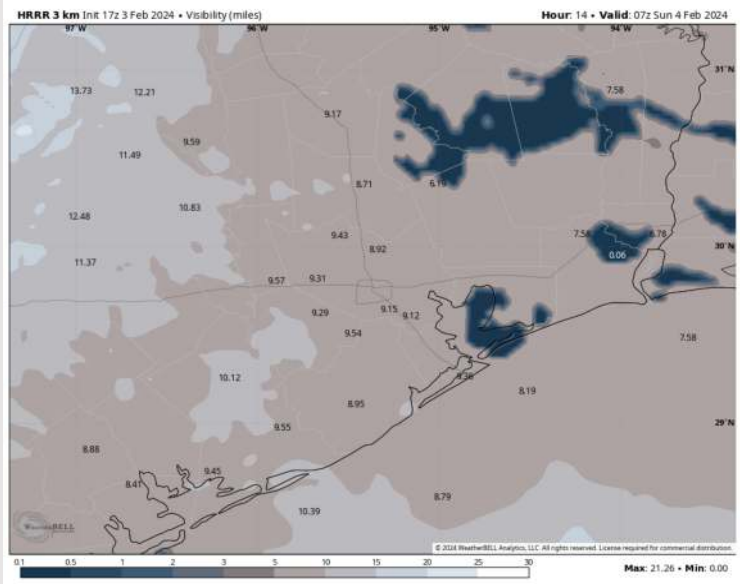
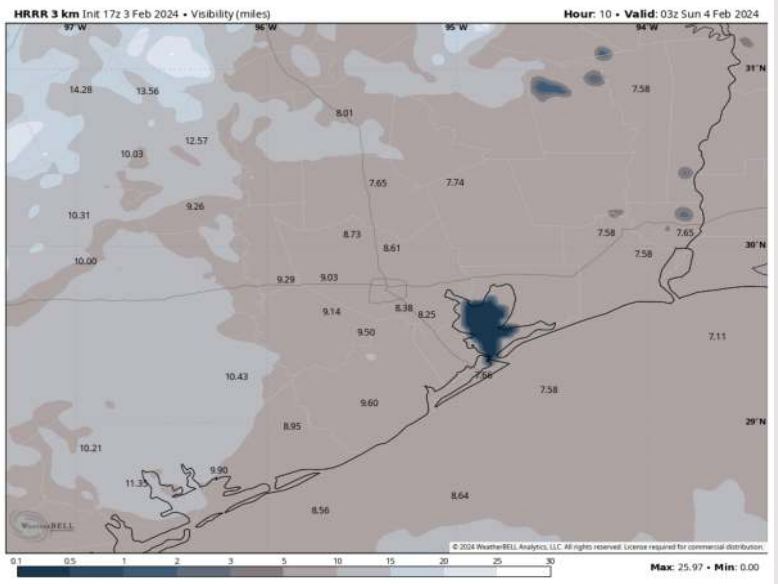
Houston Pilots Visibility Report



9 PM CT SAT VISIBILITY

2 AM CT SUN VISIBILITY

Confidence



TIMEFRAME DISCUSSED	THREAT
7 PM - 2 AM CT	Low

- Given conditions visibility-wise remain clear this afternoon with some sun trying to break through the clouds, this can help to heat the low levels of the atmosphere
- We would still need to watch for a patchy fog threat this evening shortly after sunrise from about 7 PM through 1 AM
- Fog is not favored to be dense in nature, but 2 - 4 mi visibility is still on the table, mainly for stations 75/76 through 25/26 at the "core" inlet stations
- Low confidence is present at this time, but the Boarding Station and 11/12 can also see some patchy fog, but the likelihood is lower than that for 75/76 to 25/26.
- Fog threats favored to drift east after 2 AM, leaving clear conditions into Sunday AM. A risk is that fog can linger slightly later until 3 AM, but not favored.

Houston Pilots Extended Range Visibility Report



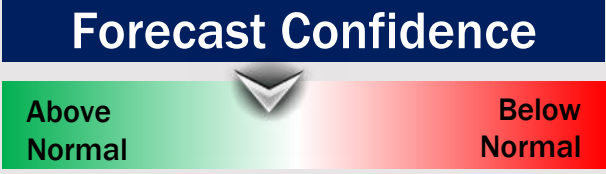
Tuesday 2/6/24

Not favoring fog concerns at this time.



Wednesday 2/7/24

Not favoring fog concerns at this time.



Thursday 2/8/24

Watching a weak cold front enter the area with sea fog threats out ahead of it. Confidence remains low at this distance, but certainly a possibility.



Chance for Fog

Tuesday AM	Unlikely
Tuesday PM	Unlikely
Wednesday AM	Unlikely
Wednesday PM	Unlikely
Thursday AM	Possible
Thursday PM	Possible

Houston Pilots Visibility Chart (miles)



Forecast Confidence



Time	Sat 1pm	Sat 2pm	Sat 3pm	Sat 4pm	Sat 5pm	Sat 6pm	Sat 7pm	Sat 8pm	Sat 9pm	Sat 10pm	Sat 11pm	Sun 12am	Sun 1am	Sun 2am	Sun 3am	Sun 4am	Sun 5am	Sun 6am	Sun 7am	Sun 8am	Sun 9am	Sun 10am	Sun 11am	Sun 12pm
610 Bridge	10	10	10	10	10	10	10	10	10	10	10	10	10	10	10	10	10	10	10	10	10	10	10	10
Kinder 1	10	10	10	10	10	10	10	10	10	10	10	10	10	10	10	10	10	10	10	10	10	10	10	10
Greens Bayou	10	10	10	10	10	10	10	10	10	10	10	10	10	10	10	10	10	10	10	10	10	10	10	10
Shell Crude	10	10	10	10	10	10	10	10	10	10	10	10	10	10	10	10	10	10	10	10	10	10	10	10
Lynchburg Ferries	10	10	10	10	10	10	10	10	10	10	10	10	10	10	10	10	10	10	10	10	10	10	10	10
Exxon 3	10	10	10	10	10	10	10	10	10	10	10	10	10	10	10	10	10	10	10	10	10	10	10	10
Morgans Point	10	10	10	10	10	10	10	10	10	10	10	10	10	10	10	10	10	10	10	10	10	10	10	10
75/76	6	6	10	9	9	10	10	9	9	7	7	6	7	10	10	10	10	10	10	10	10	10	10	10
63/64	6	6	10	9	9	9	10	9	9	7	7	6	7	10	10	10	10	10	10	10	10	10	10	10
51/52	6	6	10	9	9	9	10	9	9	6	7	6	6	10	10	10	10	10	10	10	10	10	10	10
37/38	6	6	10	9	9	9	10	9	9	6	6	6	6	10	10	10	10	10	10	10	10	10	10	10
25/26	6	6	10	9	9	9	10	10	9	7	7	6	6	10	10	10	10	10	10	10	10	10	10	10
11/12	6	6	10	9	9	9	10	9	7	6	6	6	6	10	10	10	10	10	10	10	10	10	10	10
1 & 2 Bravo	5	6	7	7	7	7	9	9	7	6	6	5	5	6	7	10	10	10	10	10	10	10	10	10

NOTE: This is automated data that may/may not agree with the official BAM thinking that's found on the daily slides or special visibility report slides. This data should be used as a guide only

Houston Pilots Wind Chart



Forecast Confidence



Example

Sustained wind 13 Knots
Gusts 18 Knots
Wind from the N

WS: 13
G:18
N

Time Knots	Sat 1pm	Sat 2pm	Sat 3pm	Sat 4pm	Sat 5pm	Sat 6pm	Sat 7pm	Sat 8pm	Sat 9pm	Sat 10pm	Sat 11pm	Sun 12am	Sun 1am	Sun 2am	Sun 3am	Sun 4am	Sun 5am	Sun 6am	Sun 7am	Sun 8am	Sun 9am	Sun 10am	Sun 11am	Sun 12pm
610 Bridge	6	6	6	6	5	4	4	4	4	5	5	5	6	7	8	8	9	9	10	10	12	12	11	12
	13	13	12	12	10	7	8	8	8	10	10	11	13	13	15	16	18	18	20	21	24	25	23	25
Kinder 1	6	6	6	6	5	4	5	4	4	5	5	5	6	7	7	8	9	9	9	9	12	12	11	12
	13	13	12	12	9	7	7	8	8	9	10	11	13	13	15	17	18	18	20	20	23	24	23	24
Greens Bayou	6	6	5	6	5	4	4	4	4	4	4	5	5	6	7	8	8	9	9	9	11	11	11	11
	12	12	12	11	9	7	7	8	8	9	9	9	10	13	14	16	16	17	18	18	22	23	22	23
Shell Crude	6	6	6	6	5	4	4	4	4	4	4	5	5	6	7	8	8	9	9	9	11	11	11	11
	12	13	12	12	9	8	7	8	8	8	8	9	9	13	14	16	16	17	18	19	22	23	22	23
Lynchburg Ferries	6	6	6	6	5	4	4	4	4	4	4	5	5	7	7	8	8	9	9	9	11	11	11	11
	12	12	12	11	9	8	7	8	8	9	8	9	9	11	13	15	15	17	17	17	21	22	21	22
Exxon 3	7	6	7	7	6	6	5	5	6	5	5	5	6	7	8	9	11	11	11	11	11	12	12	13
	13	13	13	12	10	9	8	9	9	10	10	10	11	13	14	16	17	18	18	18	21	22	21	22
Morgans Point	6	6	6	7	5	5	4	5	6	5	5	5	6	7	9	9	11	11	11	11	11	12	12	12
	13	13	13	12	10	9	8	8	9	10	9	10	10	13	14	17	18	20	20	20	22	22	21	21
75/76	7	7	7	9	9	9	7	8	8	8	8	8	9	11	13	14	16	17	17	16	15	15	14	13
	13	13	14	14	13	13	10	12	12	12	12	12	13	16	18	21	23	24	24	23	25	24	24	23
63/64	7	7	7	8	8	8	7	7	7	8	8	8	10	12	14	16	17	17	16	16	15	14	13	
	13	13	13	13	12	12	11	11	11	12	12	12	15	17	21	23	24	24	23	26	25	23	23	
51/52	7	5	7	7	8	7	7	6	7	7	7	7	9	11	13	15	16	16	15	15	15	14	13	
	13	12	13	12	12	11	10	9	10	11	10	11	11	13	16	20	21	23	24	24	27	26	24	23
37/38	7	6	7	7	8	7	6	7	7	7	7	7	9	11	13	15	16	15	16	15	15	14	14	
	14	12	11	12	12	11	9	10	10	10	10	11	12	14	18	21	23	24	26	27	28	27	25	24
25/26	8	7	7	7	7	7	6	7	7	7	7	7	9	11	13	14	15	15	15	15	15	15	15	15
	15	12	11	11	11	10	9	10	10	10	10	11	12	13	18	22	24	26	26	28	28	28	25	24
11/12	8	7	7	6	6	5	5	5	5	6	6	6	7	9	11	13	15	15	15	15	15	15	15	14
	15	11	10	9	9	8	7	9	10	11	10	12	12	13	16	21	24	26	27	29	28	27	24	22
1 & 2 Bravo	9	8	7	7	8	8	7	8	9	9	9	9	11	13	15	17	19	18	18	18	18	17	17	16
	16	13	11	11	12	12	11	12	13	13	14	13	14	17	20	25	28	30	30	30	30	28	26	23

NOTE: This is automated data that may/may not agree with the official BAM thinking that's found on the daily slides or special visibility report slides. This data should be used as a guide only

Houston Pilots: sat. 2/3/2024



Forecast Discussion

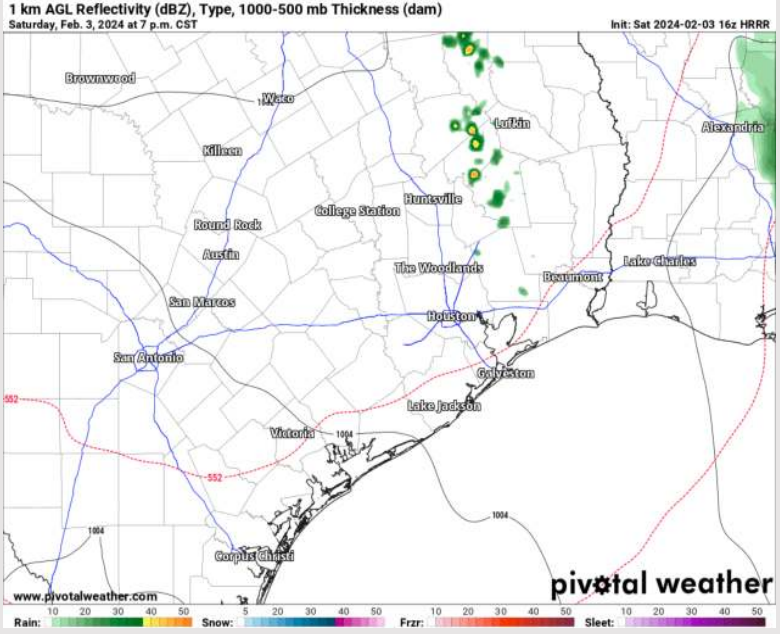
Precip: A slight chance of drizzle can linger leading up to 1 PM as the tail end of rain showers exit. Favoring a dry afternoon. Any stray backside showers look to stay to the north of the stations.

Wind: Variable wind will be present through about 4 PM before winds settle in from the WSW. **N Morgan's Point:** 4 - 9 kts sustained. **S of Morgan's Point:** Generally at 6 - 11 kts and 8 - 13 kts at the Boarding Station.

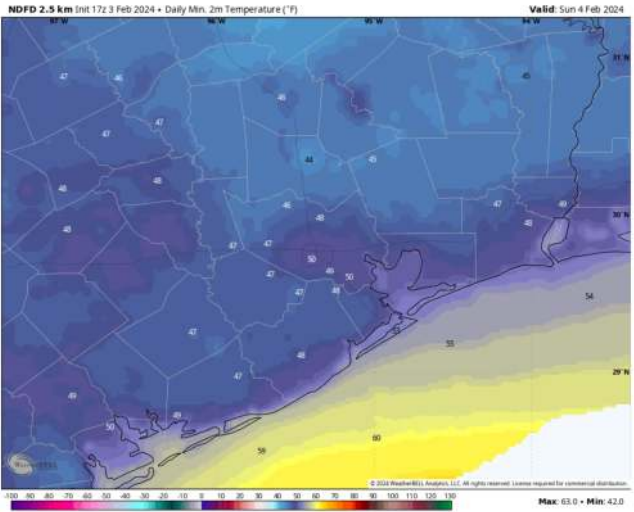
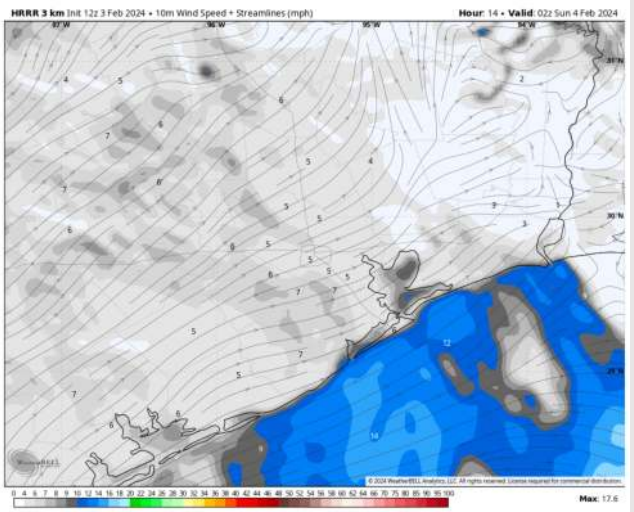
Low Temps: **N of Morgan's Point:** Near 50 F. **S of Morgan's Point:** Lower 50s F. Mid 50s F at the Boarding Station.

Visibility: Check the visibility slide for more details on a low-end risk for patchy fog this afternoon.

Precip Image: 7 PM CT



Wind Speed:
8 PM CT



Low Temps
Sunday AM

Houston Pilots: Sun. 2/4/2024



Forecast Discussion

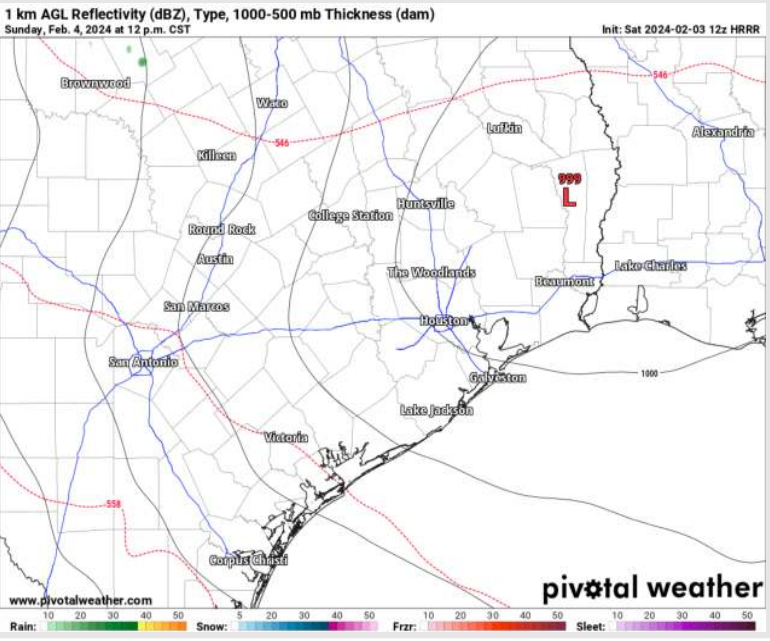
Precip: Dry conditions favored for Sunday. A slight chance for drizzle after 7 PM.

Wind: Winds will start the early AM from the WSW and will then very slowly veer clockwise from the NW. Winds will be due west by 12 PM, then NW by 3 PM. **N of Morgan's Point:** Winds at 4 - 9 kts through 4 AM, then steadily increasing to 7 - 12 kts by 12 PM and peaking at 11 - 16 kts from 2 - 4 PM. Winds start to calm after 4 PM, at 5 - 10 kts by 7 PM. **S of Morgan's Point:** Winds at 5 - 10 kts will increase to 14 - 19 kts after 5 AM. Boarding Station winds will be a notch higher at 17 - 23 kts after 5 AM. **Strongest wind gusts of up to 27 - 30 kts will be possible at all stations after 2 PM.**

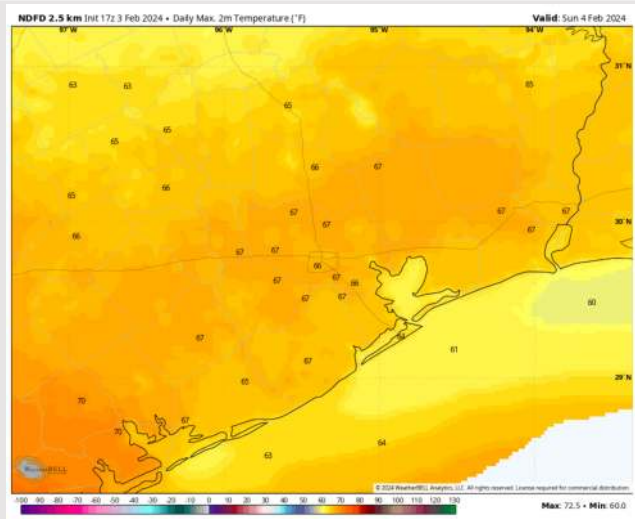
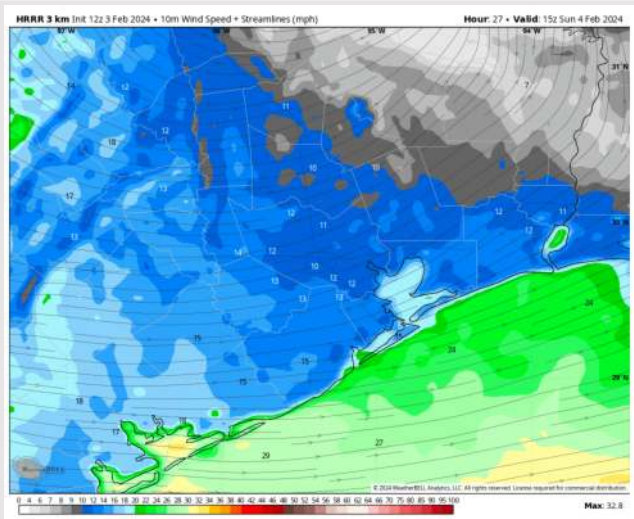
High Temps: **N of Morgan's Point:** Mid 60s F. **S of Morgan's Point:** Low 60s F

Visibility: Anticipating fog that develops Saturday to carry into the early AM of Sunday, clearing out before sunrise.

Precip Image: 12 PM CT



Wind Speed:
9 AM CT



High Temps
Sunday

Forecast Discussion

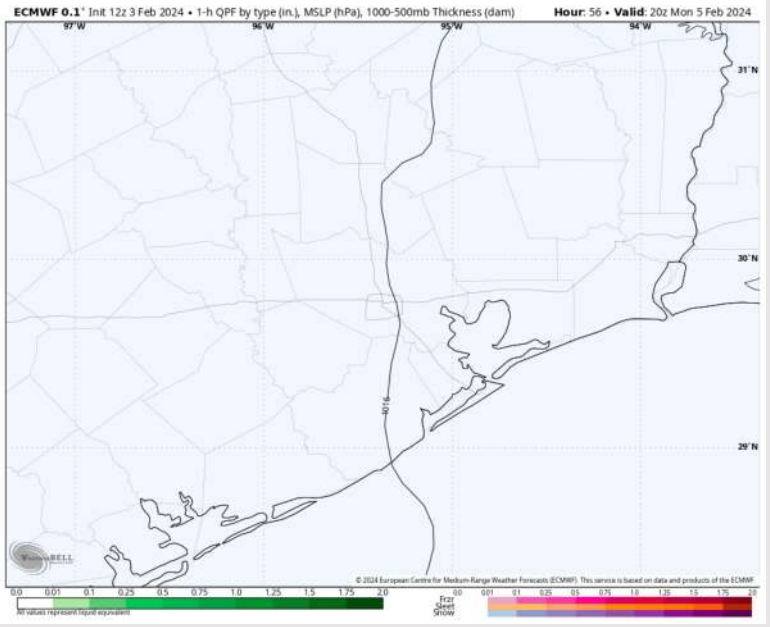
Precip: Favoring dry conditions for Monday. Slight chance for drizzle prior to 10 AM.

Wind: Elevated winds will continue into Monday. Winds will be sustained from the NW with a slow veer from the N/NNW by 6 AM. **N Morgan's Point:** 10 - 15 kts will increase slightly to 12-17 kts ~ 9 AM into the early PM. After 2 PM winds slowly decline, reaching 6 - 11 kts by 6 PM. Winds then decrease to 4-9 kts after by 9 PM. **S of Morgan's Point:** 20 - 25 kts in the AM. A declining trend begins in the PM, at 17 - 22kts by 12 PM then 11 -16 kts by 6 PM.

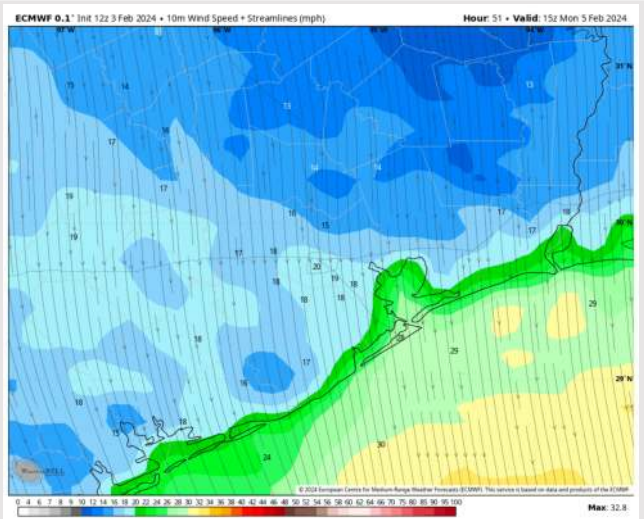
High Temps: **N of Morgan's Point:** Low 60s F **S of Morgan's Point:** Upper 50s F to Near 60 F.

Visibility: Not anticipating any visibility concerns.

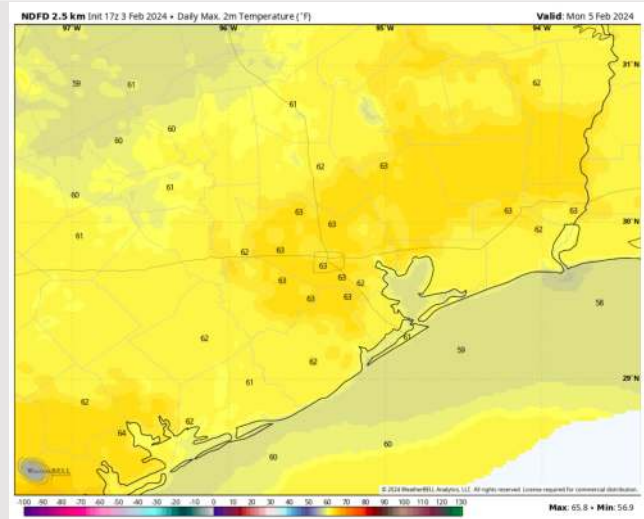
Precip Image: 2 PM CT



Wind Speed:
9 AM CT

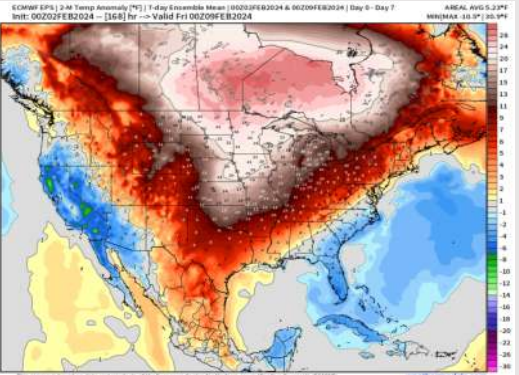


High Temps
Monday

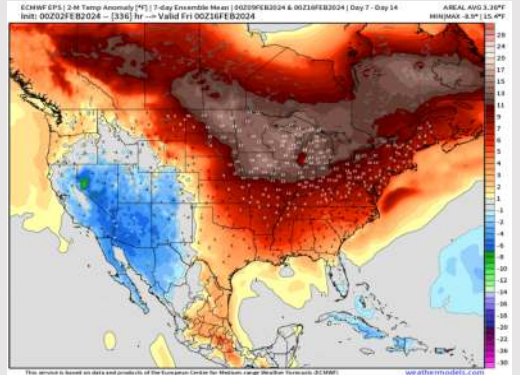


Houston Pilots: 2/3/24

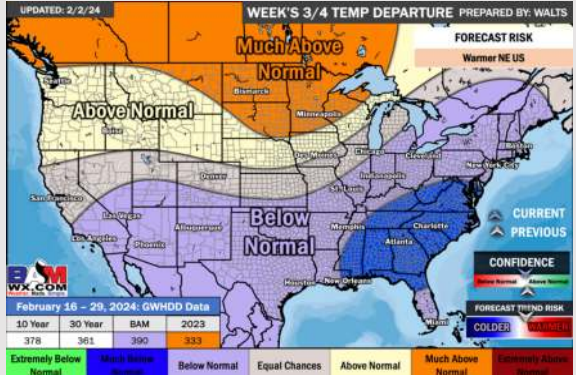
Next 7 Day Temperature Departure



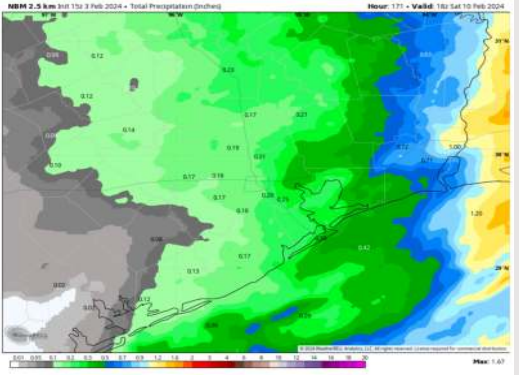
8-14 Day Temperature Departure



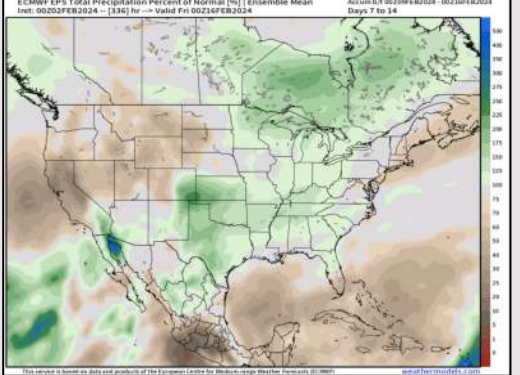
15-30 Day Temperature Departure



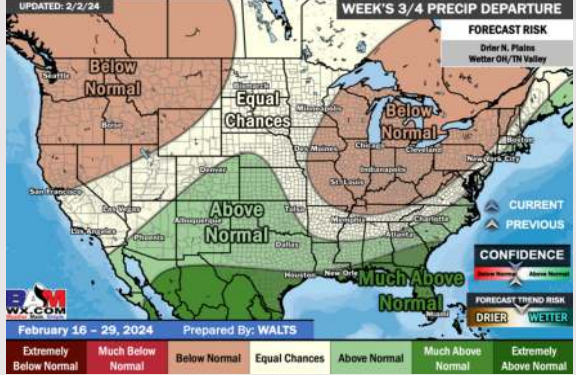
Next 7 Day Total Precipitation



8-14 Day % of Average Precip.



15-30 Day % of Average Precip.



- With exiting rain this early afternoon, the next several days look to be dry. A weak front will try to press through on Thursday/Friday. Above normal temperatures favored for the week ahead.
- Seasonable to slightly above normal precipitation chances are at play during the week 2 timeframe. Temps expected to be above normal.
- Below normal temperatures and much above normal chances for precipitation are favored in the weeks 3/4 timeframe.