

Houston Pilots Forecast Package



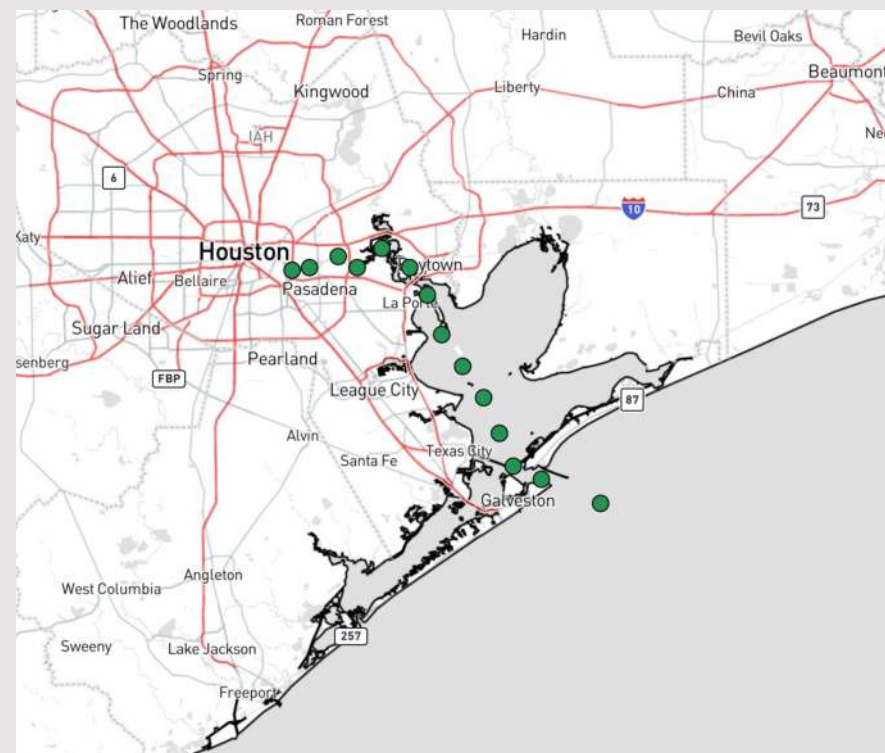
Updated: 1:30 PM CT

Saturday, February 24, 2024

Forecaster: Tyler Riggles

Weather Headlines

- Favoring dry conditions through the weekend and into the start of next week.
- Winds remain relatively calm today before elevated winds return SUN.
- Not anticipating any visibility risks over the next few days.



Radar/NWS Alerts: 1:30 PM CT



As always, please do not hesitate to reach out to us with any forecast questions via the chat option on Clarity or our on-call number, **(317)-560-8122** press 1 for forecast questions.

Houston Pilots Extended Range Visibility Report



Tuesday 2/27/24

As a front approaches from the northwest, will need to monitor for low end potential for patchy fog late Tuesday PM. Confidence remains below normal.



Wednesday 2/28/24

As a front approaches from the northwest, will need to monitor for low end potential for patchy fog Wednesday AM. Confidence remains below normal.



Thursday 2/29/24

Not anticipating visibility concerns for Thursday



Chance for Fog

Tuesday AM	Possible
Tuesday PM	Possible
Wednesday AM	Possible
Wednesday PM	Possible
Thursday AM	Unlikely
Thursday PM	Unlikely

Houston Pilots Visibility Chart (miles)



Time	Sat 2pm	Sat 3pm	Sat 4pm	Sat 5pm	Sat 6pm	Sat 7pm	Sat 8pm	Sat 9pm	Sat 10pm	Sat 11pm	Sun 12am	Sun 1am	Sun 2am	Sun 3am	Sun 4am	Sun 5am	Sun 6am	Sun 7am	Sun 8am	Sun 9am	Sun 10am	Sun 11am	Sun 12pm	Sun 1pm
610 Bridge	10	10	10	10	10	10	10	10	10	10	10	10	10	10	10	10	10	10	10	10	10	10	10	10
Kinder 1	10	10	10	10	10	10	10	10	10	10	10	10	10	10	10	10	10	10	10	10	10	10	10	10
Greens Bayou	10	10	10	10	10	10	10	10	10	10	10	10	10	10	10	10	10	10	10	10	10	10	10	10
Shell Crude	10	10	10	10	10	10	10	10	10	10	10	10	10	10	10	10	10	10	10	10	10	10	10	10
Lynchburg Ferries	10	10	10	10	10	10	10	10	10	10	10	10	10	10	10	10	10	10	10	10	10	10	10	10
Exxon 3	10	10	10	10	10	10	10	10	10	10	10	10	10	10	10	10	10	10	10	10	10	10	10	10
Morgans Point	10	10	10	10	10	10	10	10	10	10	10	10	10	10	10	10	10	10	10	10	10	10	10	10
75/76	10	10	10	10	10	10	10	10	10	10	10	10	10	10	9	9	9	9	9	9	10	10	10	10
63/64	10	10	10	10	10	10	10	10	10	10	10	10	10	10	9	9	9	9	9	9	10	10	10	10
51/52	10	10	10	10	10	10	10	10	10	10	10	10	10	10	9	9	9	9	9	9	10	10	10	10
37/38	10	10	10	10	10	10	10	10	10	10	10	10	10	10	9	9	9	9	9	9	10	10	10	10
25/26	10	10	10	10	10	10	10	10	10	10	10	10	10	10	9	9	9	9	9	9	10	10	10	10
11/12	10	10	10	10	10	10	10	10	10	10	10	10	10	10	9	9	9	9	9	9	9	9	9	9
1 & 2 Bravo	10	10	10	10	10	10	10	10	10	10	10	10	10	10	9	9	9	9	9	9	9	9	9	9

NOTE: This is automated data that may/may not agree with the official BAM thinking that's found on the daily slides or special visibility report slides. This data should be used as a guide only

Houston Pilots Wind Chart



Forecast Confidence



Sustained wind 13 Knots
Gusts 18 Knots
Wind from the N

Example

WS: 13
G:18
N

Time Knots	Sat 2pm	Sat 3pm	Sat 4pm	Sat 5pm	Sat 6pm	Sat 7pm	Sat 8pm	Sat 9pm	Sat 10pm	Sat 11pm	Sun 12am	Sun 1am	Sun 2am	Sun 3am	Sun 4am	Sun 5am	Sun 6am	Sun 7am	Sun 8am	Sun 9am	Sun 10am	Sun 11am	Sun 12pm	Sun 1pm
610 Bridge	5 11 WNW	5 11 WNW	5 9 WNW	4 7 WSW	4 6 S	5 7 S	6 11 SSW	6 13 SSW	5 11 SSW	5 9 SSW	5 10 SSW	5 9 SSW	5 9 SSW	4 8 SSW	4 8 SSW	4 8 SSW	4 8 SSW	4 8 SSW	5 10 S	7 14 S	9 16 S	9 19 S	11 21 S	12 24 S
Kinder 1	5 11 WNW	5 11 WNW	5 9 WNW	3 7 WSW	4 6 S	5 8 S	5 11 SSW	6 13 SSW	5 11 SSW	5 9 SSW	5 9 SSW	5 9 SSW	5 9 SSW	4 8 SSW	4 8 SSW	4 8 SSW	4 8 SSW	4 10 S	5 13 S	7 16 S	9 19 S	11 21 S	11 23 S	11 23 S
Greens Bayou	5 10 WNW	5 10 WNW	5 9 W	4 7 W	4 7 S	5 9 S	6 11 SSW	6 13 SSW	5 11 SSW	5 9 SSW	5 9 SSW	5 9 SSW	5 9 SSW	4 8 SSW	4 7 SSW	4 9 SSW	4 9 SSW	4 10 S	5 13 S	7 15 S	9 18 S	9 21 S	11 22 S	11 22 S
Shell Crude	5 10 NW	5 10 WNW	4 9 W	4 8 SW	4 8 S	5 10 S	6 12 SSW	6 13 SSW	5 11 SSW	5 9 SSW	5 9 SSW	4 9 SSW	4 9 SSW	4 9 SSW	4 8 SSW	4 7 SSW	4 9 SSW	4 9 SSW	5 13 S	7 15 S	9 18 S	9 21 S	11 21 S	11 21 S
Lynchburg Ferries	5 9 WNW	5 10 NW	4 9 WNW	4 8 SSW	5 7 S	5 9 S	5 11 SSW	6 12 SSW	5 11 SSW	5 9 SSW	5 9 SSW	4 8 SSW	4 8 SSW	4 7 SSW	3 7 S	3 8 S	4 8 S	4 8 S	5 9 S	6 13 S	8 15 S	9 17 S	11 21 S	12 21 S
Exxon 3	5 10 W	5 11 W	5 9 SW	6 9 S	7 9 S	7 10 S	7 12 SSW	8 13 SSW	6 12 SSW	5 10 SSW	5 9 SSW	5 9 SSW	4 9 SSW	4 9 SSW	4 8 SSW	4 8 SSW	4 9 SSW	4 9 SSW	5 10 S	6 13 S	8 15 S	10 18 S	12 20 S	13 21 S
Morgans Point	4 9 S	5 9 S	5 9 S	6 9 S	7 10 S	7 11 S	7 12 SSW	7 12 SSW	6 12 SSW	5 10 SSW	5 9 SSW	4 9 SSW	4 9 SSW	4 8 SSW	4 8 SSW	4 8 SSW	4 8 SSW	5 10 S	5 13 S	6 14 S	8 17 S	9 19 S	11 20 S	12 20 S
75/76	5 11 S	7 13 S	9 13 S	11 15 S	11 16 SSW	11 16 SSW	11 15 SSW	11 14 SSW	9 13 SSW	8 12 SSW	7 10 SSW	7 10 SSW	7 9 SSW	6 9 SSW	7 10 SSW	7 10 SSW	7 10 SSW	7 11 SSW	8 12 SSW	9 13 SSW	9 15 SSW	11 17 SSW	13 20 SSW	14 22 SSW
63/64	5 10 S	7 12 S	9 13 S	10 14 S	11 15 SSW	11 15 SSW	10 14 SSW	9 13 SSW	8 13 SSW	7 12 SSW	6 10 SSW	6 9 SSW	6 9 SSW	6 9 SSW	6 9 SSW	6 9 SSW	6 9 SSW	7 10 S	7 11 S	8 12 S	9 15 S	11 17 S	13 20 S	13 21 S
51/52	5 9 S	7 11 S	8 12 S	9 14 S	10 15 SSW	9 14 SSW	9 13 SSW	9 13 SSW	8 12 SSW	7 10 SSW	6 9 SSW	6 9 SSW	5 8 SSW	5 8 SSW	5 8 SSW	5 7 SSW	5 8 SSW	6 9 S	7 10 S	8 12 S	9 14 S	11 16 S	13 18 S	13 19 S
37/38	5 9 S	7 11 S	8 12 S	9 14 S	10 14 SSW	9 13 SSW	9 13 SSW	8 12 SSW	8 12 SSW	7 10 SSW	6 9 SSW	6 8 SSW	5 8 SSW	5 8 SSW	5 7 SSW	5 7 SSW	5 7 SSW	6 9 S	7 11 S	8 13 S	9 14 S	11 16 S	13 17 S	13 19 S
25/26	5 8 SSW	7 10 S	9 13 SSW	9 13 S	9 13 SSW	9 13 SSW	9 13 SSW	8 12 SSW	7 11 SSW	7 10 SSW	6 9 SSW	5 8 SSW	5 8 SSW	5 8 SSW	5 7 SSW	5 7 SSW	5 7 SSW	6 9 S	7 12 S	8 13 S	9 14 S	11 16 S	13 17 S	13 18 S
11/12	5 8 SSW	6 9 S	8 12 S	7 11 S	7 11 SSW	7 10 SSW	7 11 SSW	6 12 SSW	6 11 SSW	5 9 SSW	5 8 SSW	5 7 SSW	5 7 SSW	5 7 SSW	5 7 SSW	5 7 SSW	5 7 SSW	6 9 S	7 11 S	7 12 S	9 13 S	11 15 S	13 16 S	13 17 S
1 & 2 Bravo	5 8 SW	7 10 SW	8 12 SSW	9 13 SSW	9 13 SSW	9 13 SSW	9 13 SSW	9 14 SSW	9 13 SSW	9 13 SSW	7 11 SSW	7 10 SSW	7 10 SSW	7 10 SSW	7 10 SSW	7 10 SSW	7 10 SSW	7 11 S	8 12 S	9 13 S	9 14 S	10 14 S	10 15 S	10 15 S

NOTE: This is automated data that may/may not agree with the official BAM thinking that's found on the daily slides or special visibility report slides. This data should be used as a guide only

Houston Pilots: sat. 2/24/2024



Forecast Discussion

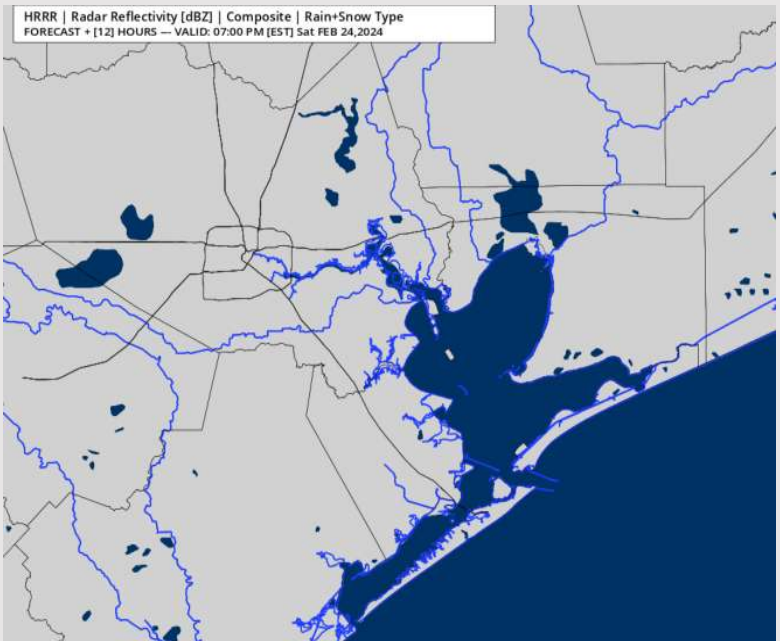
Precip: Favoring dry conditions for today.

Wind: Winds variable in direction as a weak front works through. **N Morgan's Point:** Winds at 3 – 6 kts for the entire day. **S of Morgan's Point:** Winds at 3 – 6 kts through 6PM before becoming 4 - 8 kts.

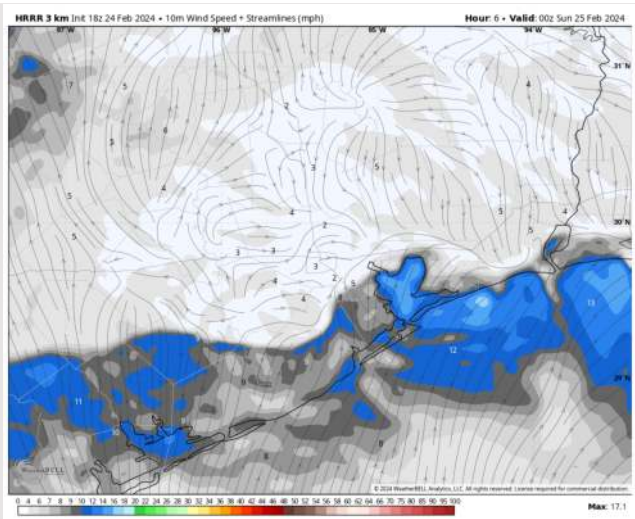
Low Temps: **N of Morgan's Point:** Mid 50s F. **S of Morgan's Point:** Upper 50s-Low 60s F.

Visibility: No fog risks favored for today.

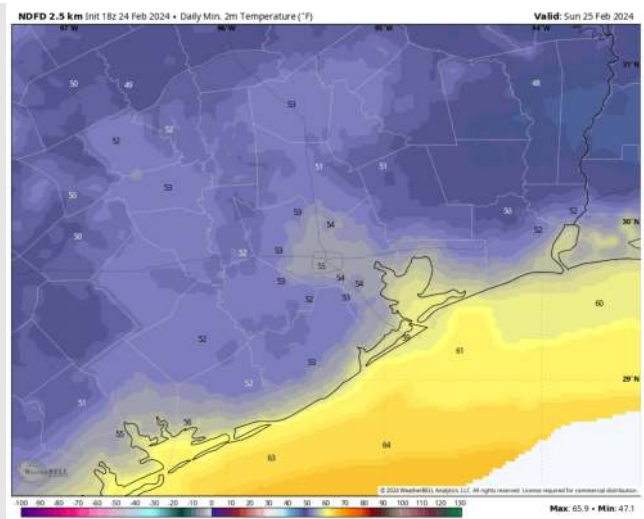
Precip Image: 6 PM CT



Wind Speed:
6 PM CT



Low Temps
SUN AM



Houston Pilots: Sun. 2/25/2024



Forecast Discussion

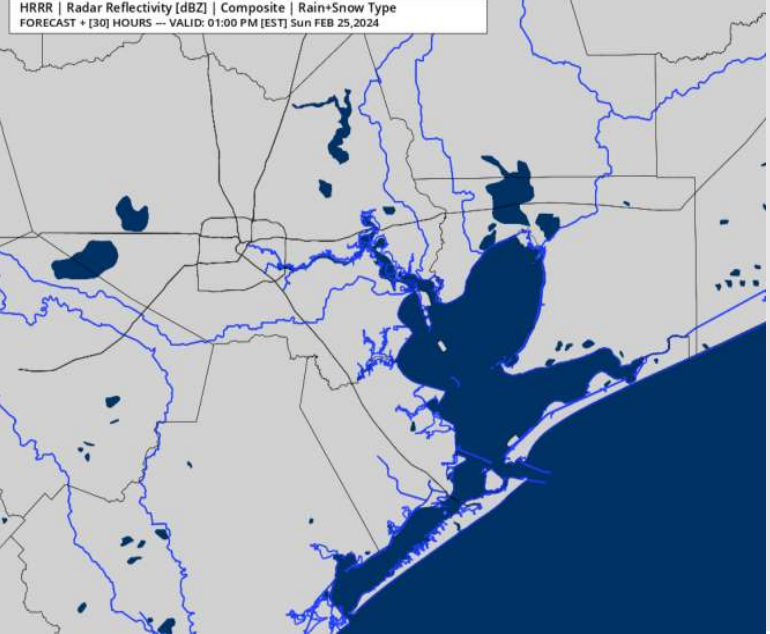
Precip: Favoring dry conditions for Sunday.

Wind: Winds out of the SW during much of the AM shift out of the S by 10 AM. **N of Morgan's Point:** Winds will be at 3-8 kts through 11 AM, increasing to 7-12 kts after that time. **S of Morgan's Point:** Winds at 5-10 kts through 11 AM, increasing to 8-13 kts after that time. **Wind gusts of 20-25 kts possible N of Morgan's Point after 11 AM and for all Stations after 6 PM.**

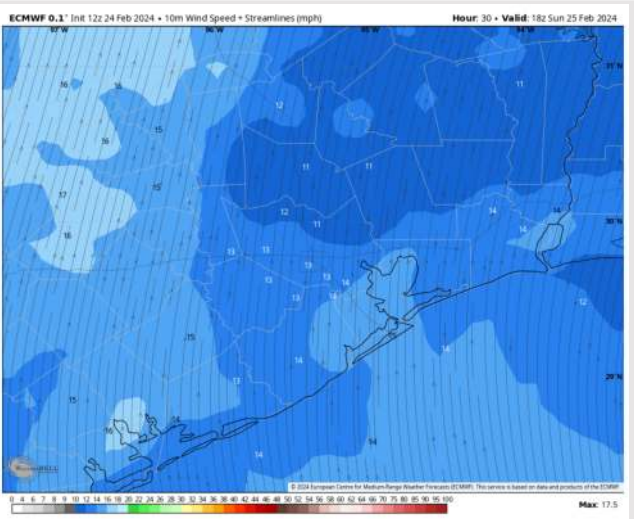
High Temps: **N of Morgan's Point:** Upper 70s F. **S of Morgan's Point:** Mid-Upper 60s F.

Visibility: Not anticipating visibility concerns at this time.

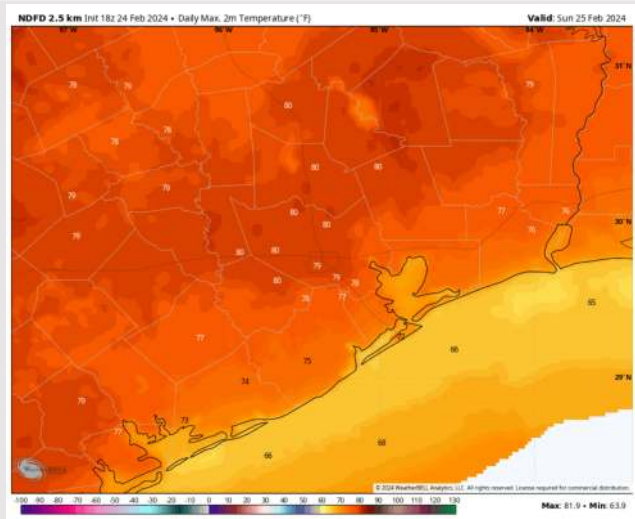
Precip Image: 12 PM CT



Wind Speed:
12 PM CT



High Temps
Sunday



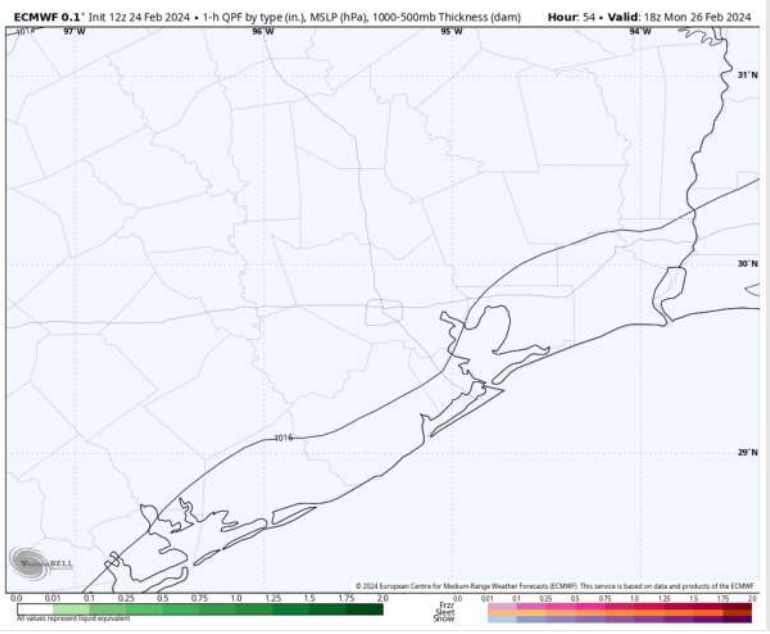
Houston Pilots: Mon. 2/26/2024



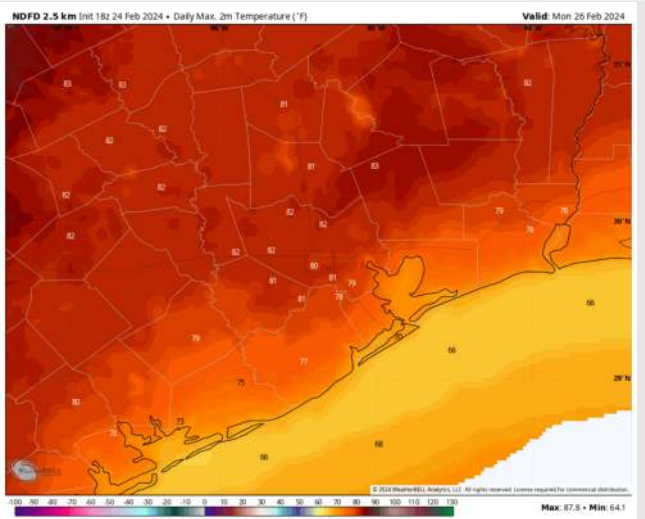
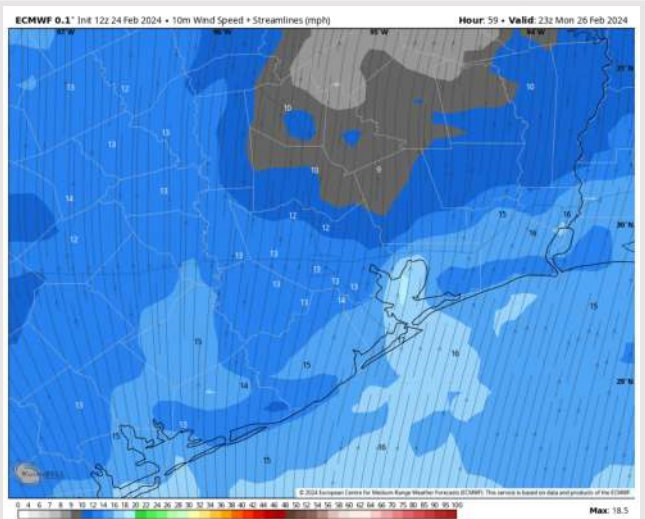
Forecast Discussion

- Precip:** Favoring dry conditions for Monday.
- Wind:** Winds will remain out of the S/SSW throughout the day Monday. **N Morgan's Point:** 7 – 12 kts throughout the day. **S of Morgan's Point:** Winds at 13 – 18 kts throughout the day. **Wind gusts of 20-25 kts possible for all Stations throughout the day Monday.**
- High Temps:** **N of Morgan's Point:** Low 80s F. **S of Morgan's Point:** Mid-Low 70s F.
- Visibility:** Not anticipating any fog concerns for Monday.

Precip Image: 12 PM CT



Wind Speed:
5 PM CT

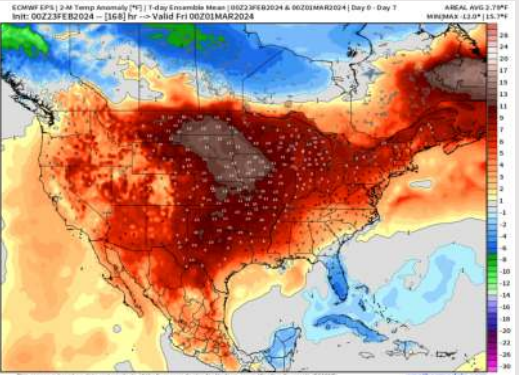


High Temps
Monday

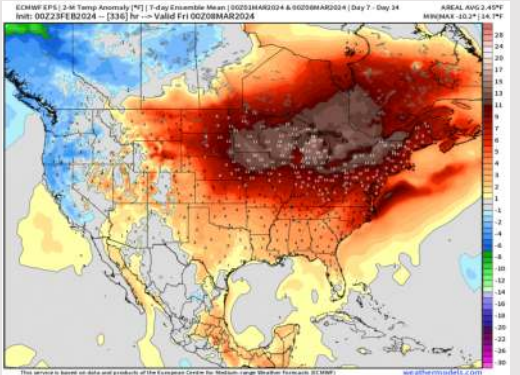
Houston Pilots: 2/24/24



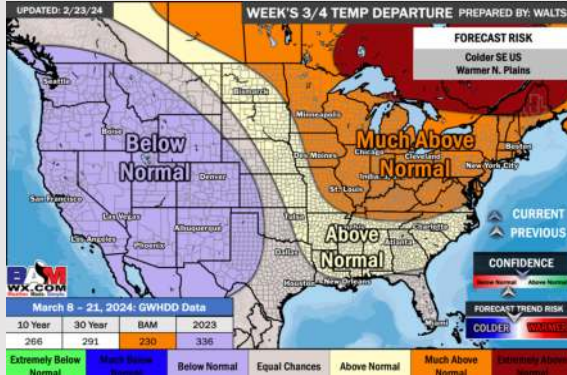
Next 7 Day Temperature Departure



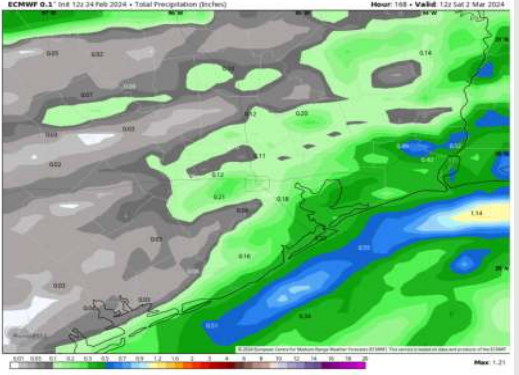
8-14 Day Temperature Departure



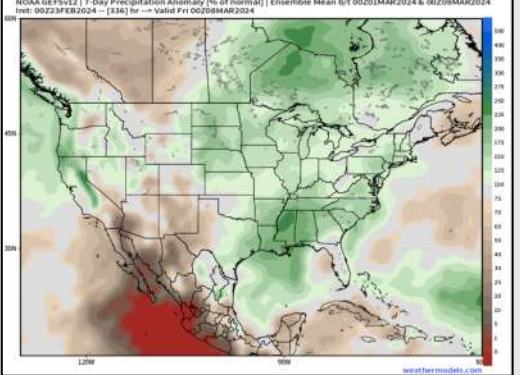
15-30 Day Temperature Departure



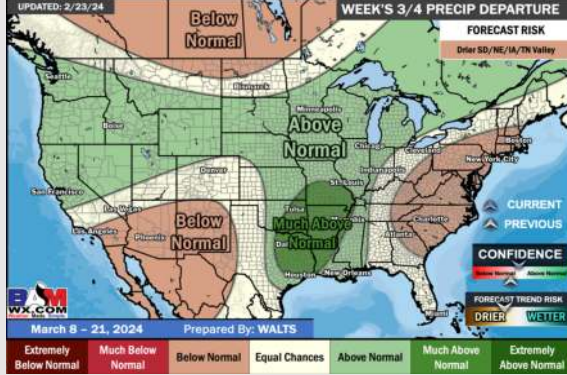
Next 7 Day Total Precipitation



8-14 Day % of Average Precip.



15-30 Day % of Average Precip.



- The next best chance of rain is favored to move in towards the middle / end of next week. Above normal temperatures favored for the week ahead.
- Slightly above normal precipitation chances are at play during the week 2 timeframe. Temps expected to be slightly above normal.
- Seasonable temperatures and above normal chances for precipitation are favored in the weeks 3/4 timeframe.