

# Houston Pilots Forecast Package



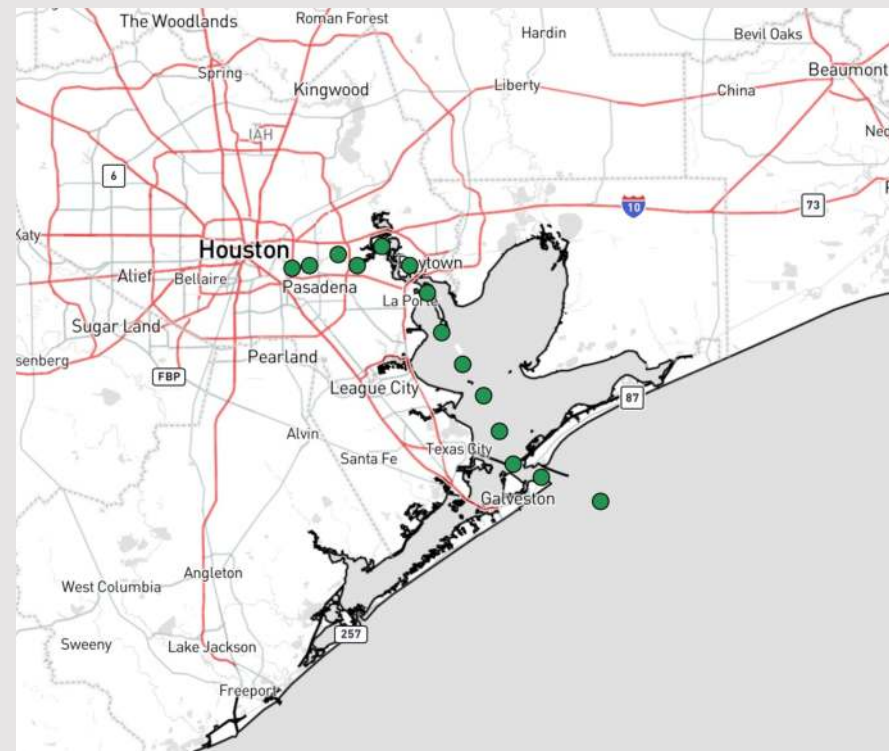
Updated: 12:45 AM CT

Saturday, February 24, 2024

Forecaster: Tyler Riggles

## Weather Headlines

- Favoring dry conditions through the weekend and into the start of next week.
- Winds remain relatively calm today before elevated winds return SUN.
- Not anticipating any visibility risks over the next few days.



**Radar/NWS Alerts: 12:43 AM CT**



As always, please do not hesitate to reach out to us with any forecast questions via the chat option on Clarity or our on-call number, **(317)-560-8122** press 1 for forecast questions.

# Houston Pilots Extended Range Visibility Report



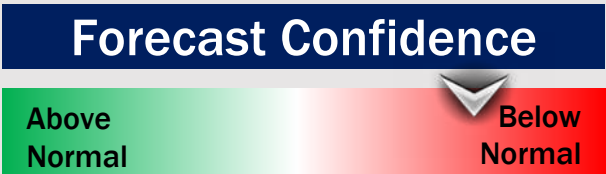
## Tuesday 2/27/24

As a front approaches from the northwest, will need to monitor for low end potential for patchy fog late Tuesday PM. Confidence remains below normal.



## Wednesday 2/28/24

As a front approaches from the northwest, will need to monitor for low end potential for patchy fog Wednesday AM. Confidence remains below normal.



## Thursday 2/29/24

Not anticipating visibility concerns for Thursday



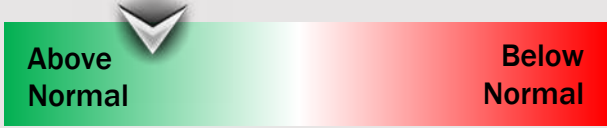
## Chance for Fog

|              |          |
|--------------|----------|
| Tuesday AM   | Possible |
| Tuesday PM   | Possible |
| Wednesday AM | Possible |
| Wednesday PM | Possible |
| Thursday AM  | Unlikely |
| Thursday PM  | Unlikely |

# Houston Pilots Visibility Chart (miles)



## Forecast Confidence



| Time              | Sat 12am | Sat 1am | Sat 2am | Sat 3am | Sat 4am | Sat 5am | Sat 6am | Sat 7am | Sat 8am | Sat 9am | Sat 10am | Sat 11am | Sat 12pm | Sat 1pm | Sat 2pm | Sat 3pm | Sat 4pm | Sat 5pm | Sat 6pm | Sat 7pm | Sat 8pm | Sat 9pm | Sat 10pm | Sat 11pm |
|-------------------|----------|---------|---------|---------|---------|---------|---------|---------|---------|---------|----------|----------|----------|---------|---------|---------|---------|---------|---------|---------|---------|---------|----------|----------|
| 610 Bridge        | 10       | 10      | 10      | 10      | 10      | 10      | 10      | 10      | 10      | 10      | 10       | 10       | 10       | 10      | 10      | 10      | 10      | 10      | 10      | 10      | 10      | 10      | 10       | 10       |
| Kinder 1          | 10       | 10      | 10      | 10      | 10      | 10      | 10      | 10      | 10      | 10      | 10       | 10       | 10       | 10      | 10      | 10      | 10      | 10      | 10      | 10      | 10      | 10      | 10       | 10       |
| Greens Bayou      | 10       | 10      | 10      | 10      | 10      | 10      | 10      | 10      | 10      | 10      | 10       | 10       | 10       | 10      | 10      | 10      | 10      | 10      | 10      | 10      | 10      | 10      | 10       | 10       |
| Shell Crude       | 10       | 10      | 10      | 10      | 10      | 10      | 10      | 10      | 10      | 10      | 10       | 10       | 10       | 10      | 10      | 10      | 10      | 10      | 10      | 10      | 10      | 10      | 10       | 10       |
| Lynchburg Ferries | 10       | 10      | 10      | 10      | 10      | 10      | 10      | 10      | 10      | 10      | 10       | 10       | 10       | 10      | 10      | 10      | 10      | 10      | 10      | 10      | 10      | 10      | 10       | 10       |
| Exxon 3           | 10       | 10      | 10      | 10      | 10      | 10      | 10      | 10      | 10      | 10      | 10       | 10       | 10       | 10      | 10      | 10      | 10      | 10      | 10      | 10      | 10      | 10      | 10       | 10       |
| Morgans Point     | 10       | 10      | 10      | 10      | 10      | 10      | 10      | 10      | 10      | 10      | 10       | 10       | 10       | 10      | 10      | 10      | 10      | 10      | 10      | 10      | 10      | 10      | 10       | 10       |
| 75/76             | 10       | 10      | 10      | 10      | 10      | 10      | 10      | 10      | 10      | 10      | 10       | 10       | 10       | 10      | 10      | 10      | 10      | 10      | 10      | 10      | 10      | 10      | 10       | 10       |
| 63/64             | 10       | 10      | 10      | 10      | 10      | 10      | 10      | 10      | 10      | 10      | 10       | 10       | 10       | 10      | 10      | 10      | 10      | 10      | 10      | 10      | 10      | 10      | 10       | 10       |
| 51/52             | 10       | 10      | 10      | 10      | 10      | 10      | 10      | 10      | 10      | 10      | 10       | 10       | 10       | 10      | 10      | 10      | 10      | 10      | 10      | 10      | 10      | 10      | 10       | 10       |
| 37/38             | 10       | 10      | 10      | 10      | 10      | 10      | 10      | 10      | 10      | 10      | 10       | 10       | 10       | 10      | 10      | 10      | 10      | 10      | 10      | 10      | 10      | 10      | 10       | 10       |
| 25/26             | 10       | 10      | 10      | 10      | 10      | 10      | 10      | 10      | 10      | 10      | 10       | 10       | 10       | 10      | 10      | 10      | 10      | 10      | 10      | 10      | 10      | 10      | 10       | 10       |
| 11/12             | 10       | 10      | 10      | 10      | 10      | 10      | 10      | 10      | 10      | 10      | 10       | 10       | 10       | 10      | 10      | 10      | 10      | 10      | 10      | 10      | 10      | 10      | 10       | 10       |
| 1 & 2 Bravo       | 10       | 10      | 10      | 10      | 10      | 10      | 10      | 10      | 10      | 10      | 10       | 10       | 10       | 10      | 10      | 10      | 10      | 10      | 10      | 10      | 10      | 10      | 10       | 10       |

**NOTE: This is automated data that may/may not agree with the official BAM thinking that's found on the daily slides or special visibility report slides. This data should be used as a guide only**

# Houston Pilots Wind Chart



## Forecast Confidence



Sustained wind 13 Knots  
Gusts 18 Knots  
Wind from the N

## Example

WS: 13  
G:18  
N

| Time Knots        | Sat 12am | Sat 1am | Sat 2am | Sat 3am | Sat 4am | Sat 5am | Sat 6am | Sat 7am | Sat 8am | Sat 9am | Sat 10am | Sat 11am | Sat 12pm | Sat 1pm | Sat 2pm | Sat 3pm | Sat 4pm | Sat 5pm | Sat 6pm | Sat 7pm | Sat 8pm | Sat 9pm | Sat 10pm | Sat 11pm |
|-------------------|----------|---------|---------|---------|---------|---------|---------|---------|---------|---------|----------|----------|----------|---------|---------|---------|---------|---------|---------|---------|---------|---------|----------|----------|
| 610 Bridge        | 4        | 3       | 3       | 2       | 2       | 2       | 2       | 2       | 2       | 3       | 3        | 4        | 4        | 5       | 5       | 5       | 4       | 4       | 4       | 5       | 5       | 6       | 5        | 5        |
| Kinder 1          | 9        | 7       | 6       | 4       | 4       | 3       | 4       | 3       | 4       | 5       | 5        | 8        | 8        | 9       | 11      | 10      | 8       | 7       | 6       | 8       | 11      | 13      | 11       | 9        |
| Greens Bayou      | 5        | 3       | 3       | 2       | 2       | 2       | 2       | 2       | 2       | 3       | 3        | 4        | 4        | 4       | 5       | 5       | 4       | 4       | 4       | 5       | 5       | 6       | 5        | 5        |
| Shell Crude       | 9        | 7       | 6       | 5       | 4       | 4       | 4       | 4       | 4       | 5       | 6        | 7        | 8        | 8       | 10      | 10      | 9       | 7       | 7       | 9       | 11      | 12      | 11       | 9        |
| Lynchburg Ferries | 4        | 3       | 3       | 3       | 2       | 2       | 2       | 1       | 2       | 3       | 3        | 4        | 4        | 5       | 5       | 5       | 4       | 4       | 4       | 5       | 5       | 5       | 5        | 5        |
| Exxon 3           | 5        | 4       | 3       | 3       | 3       | 3       | 2       | 2       | 3       | 3       | 3        | 4        | 5        | 5       | 5       | 5       | 5       | 5       | 6       | 7       | 7       | 7       | 7        | 5        |
| Morgans Point     | 9        | 7       | 6       | 5       | 4       | 4       | 4       | 4       | 4       | 4       | 6        | 8        | 8        | 9       | 9       | 9       | 9       | 10      | 10      | 11      | 11      | 12      | 11       | 10       |
| 75/76             | 7        | 6       | 5       | 4       | 5       | 3       | 3       | 3       | 4       | 4       | 4        | 4        | 4        | 5       | 5       | 6       | 8       | 9       | 12      | 11      | 11      | 10      | 9        | 9        |
| 63/64             | 7        | 6       | 5       | 4       | 4       | 3       | 2       | 3       | 4       | 4       | 4        | 4        | 4        | 5       | 5       | 7       | 8       | 10      | 11      | 10      | 11      | 10      | 9        | 8        |
| 51/52             | 7        | 5       | 5       | 5       | 3       | 2       | 1       | 2       | 3       | 3       | 3        | 3        | 4        | 5       | 5       | 7       | 8       | 9       | 10      | 9       | 9       | 8       | 8        | 7        |
| 37/38             | 7        | 6       | 5       | 4       | 3       | 1       | 1       | 1       | 3       | 3       | 3        | 3        | 5        | 5       | 5       | 7       | 9       | 9       | 10      | 9       | 9       | 8       | 8        | 7        |
| 25/26             | 7        | 6       | 5       | 5       | 2       | 1       | 1       | 1       | 3       | 3       | 3        | 3        | 5        | 5       | 5       | 7       | 8       | 9       | 9       | 9       | 9       | 7       | 7        | 7        |
| 11/12             | 6        | 5       | 5       | 4       | 3       | 2       | 1       | 1       | 2       | 2       | 3        | 4        | 5        | 5       | 5       | 7       | 7       | 7       | 7       | 7       | 7       | 6       | 6        | 5        |
| 1 & 2 Bravo       | 9        | 8       | 7       | 7       | 5       | 3       | 3       | 3       | 3       | 3       | 5        | 5        | 5        | 5       | 7       | 7       | 8       | 9       | 9       | 9       | 9       | 9       | 9        | 9        |

NOTE: This is automated data that may/may not agree with the official BAM thinking that's found on the daily slides or special visibility report slides. This data should be used as a guide only



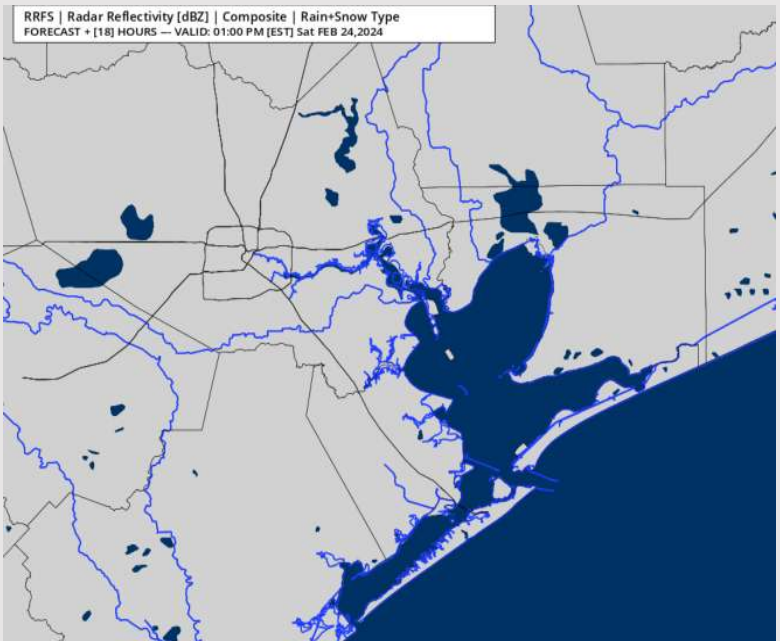
# Houston Pilots: sat. 2/24/2024



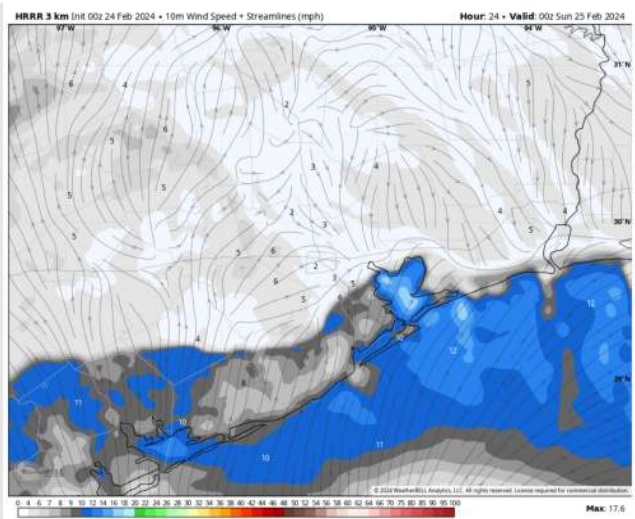
## Forecast Discussion

- Precip:** Favoring dry conditions for today.
- Wind:** Winds out of the N/NW through 7AM before becoming variable as a weak front works through. **N Morgan's Point:** Winds at 3 – 6 kts for the entire day. **S of Morgan's Point:** Winds at 3 – 6 kts through 6PM before becoming 4 - 8 kts.
- High Temps:** **N of Morgan's Point:** Mid 70s F. **S of Morgan's Point:** Low 60s F.
- Visibility:** No fog risks favored for today.

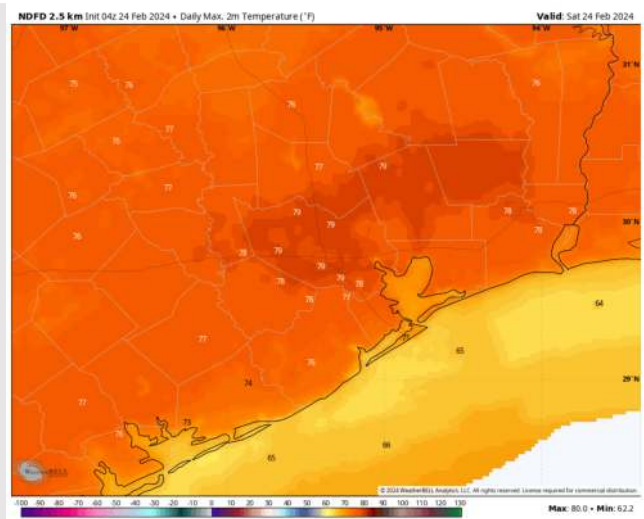
## Precip Image: 12 PM CT



Wind Speed:  
6 PM CT



High Temps  
Today



# Houston Pilots: Sun. 2/25/2024



## Forecast Discussion

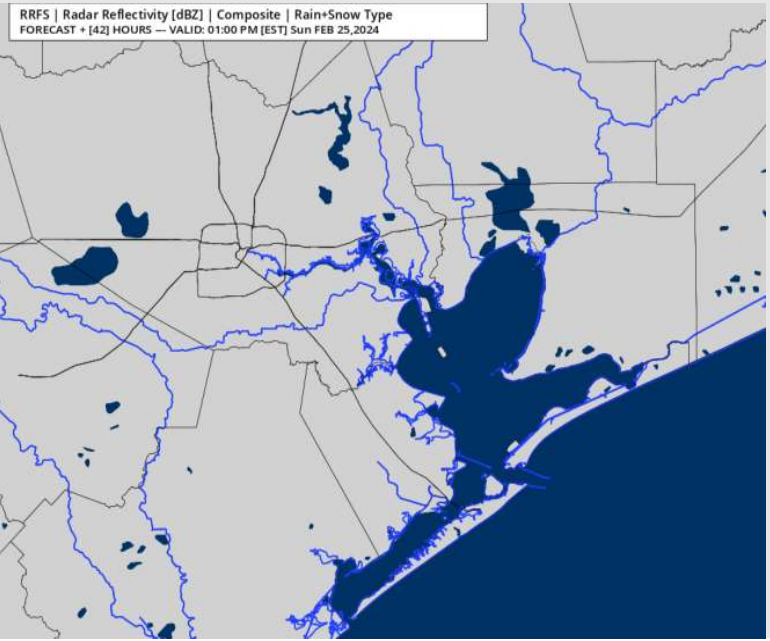
**Precip:** Favoring dry conditions for Sunday.

**Wind:** Winds out of the SW during much of the AM shift out of the S by 10 AM. **N of Morgan's Point:** Winds will be at 3-8 kts through 11 AM, increasing to 7-12 kts after that time. **S of Morgan's Point:** Winds at 5-10 kts through 11 AM, increasing to 8-13 kts after that time. **Wind gusts of 20-25 kts possible N of Morgan's Point after 11 AM.**

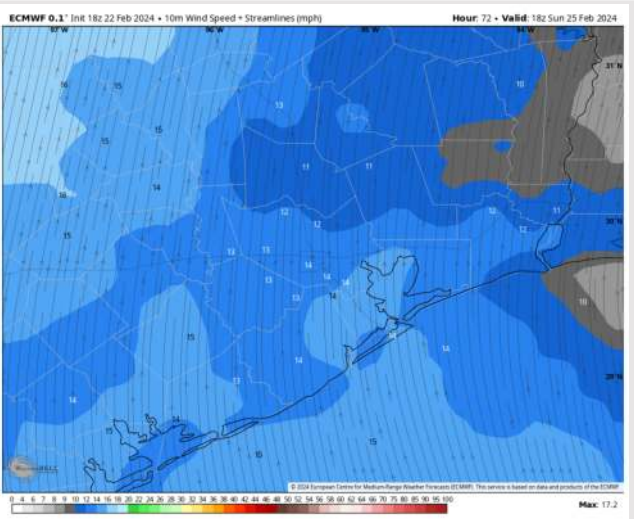
**High Temps:** **N of Morgan's Point:** Upper 70s F. **S of Morgan's Point:** Mid-Upper 60s F.

**Visibility:** Not anticipating visibility concerns at this time.

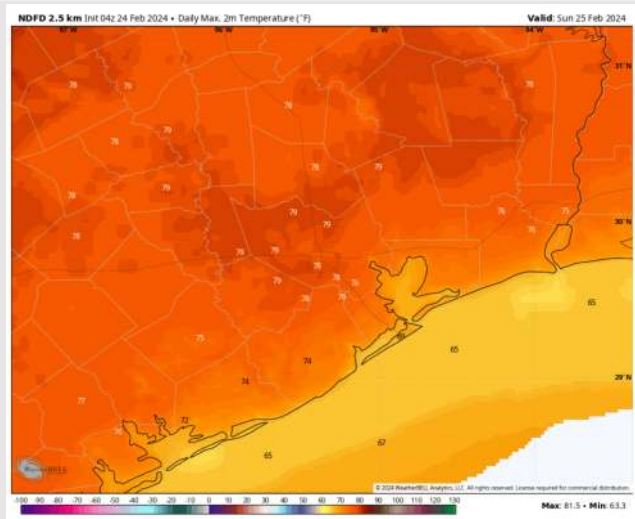
## Precip Image: 12 PM CT



Wind Speed:  
12 PM CT



High Temps  
Sunday





# Houston Pilots: Mon. 2/26/2024



## Forecast Discussion

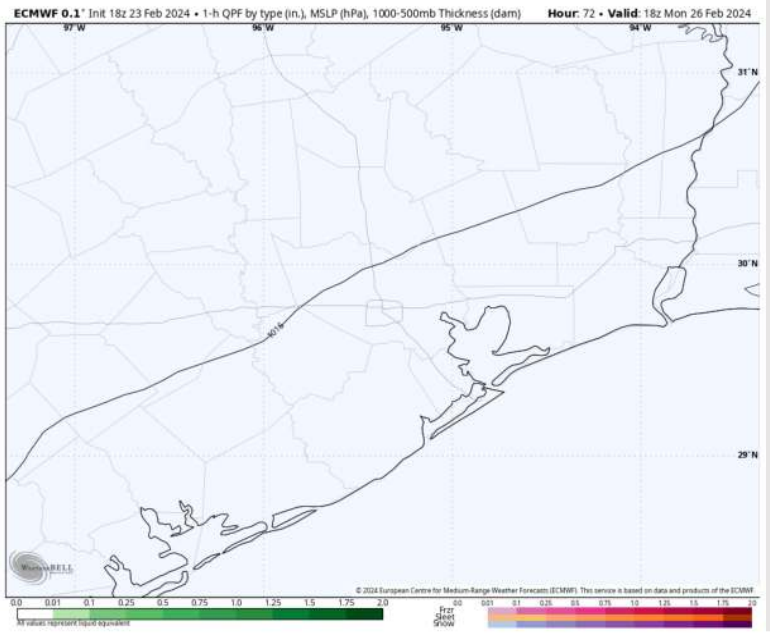
**Precip:** Favoring dry conditions for Monday.

**Wind:** Winds will remain out of the S/SSW throughout the day Monday. **N Morgan's Point:** 7 – 12 kts throughout the day. **S of Morgan's Point:** Winds at 13 – 18 kts throughout the day. **Wind gusts of 20-25 kts possible for all Stations throughout the day Monday.**

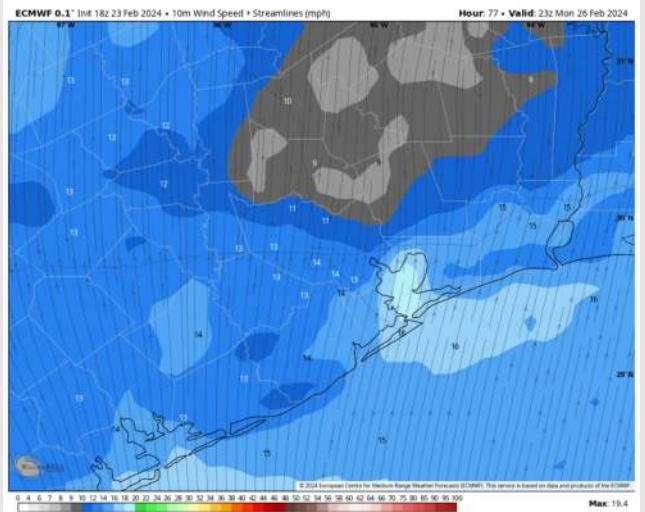
**High Temps:** **N of Morgan's Point:** Low 80s F. **S of Morgan's Point:** Mid-Low 70s F.

**Visibility:** Not anticipating any fog concerns for Monday.

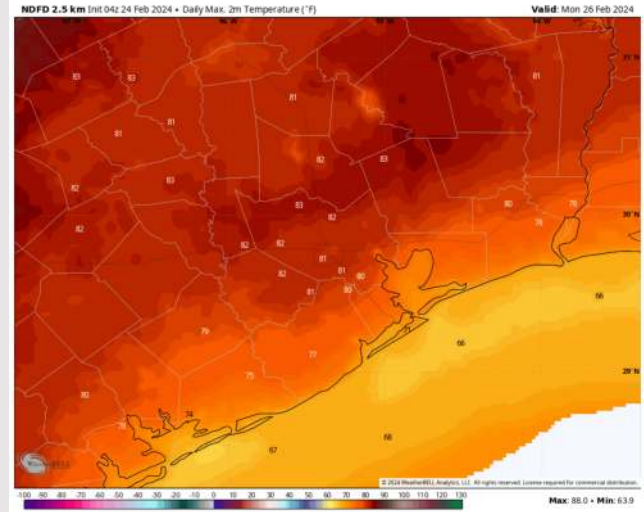
## Precip Image: 12 PM CT



**Wind Speed:  
5 PM CT**



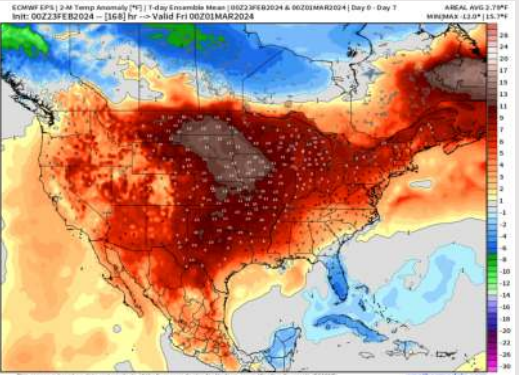
**High Temps  
Monday**



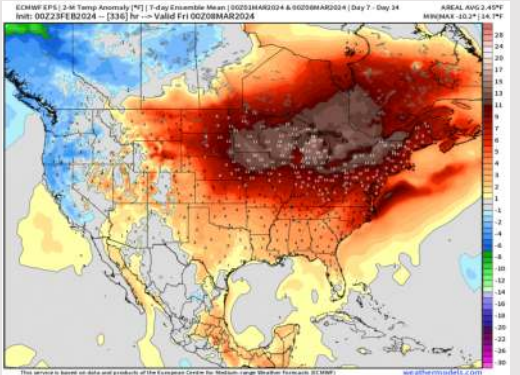
# Houston Pilots: 2/24/24



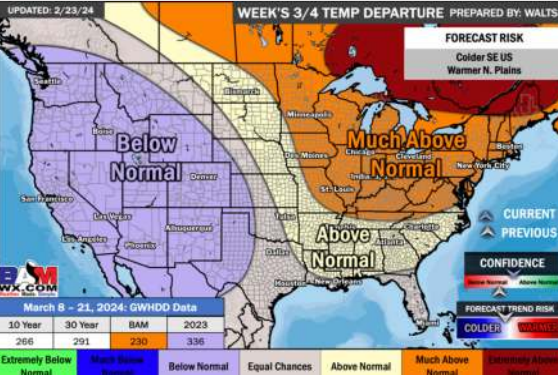
**Next 7 Day Temperature Departure**



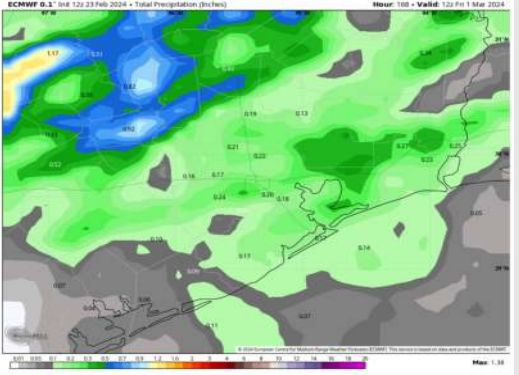
**8-14 Day Temperature Departure**



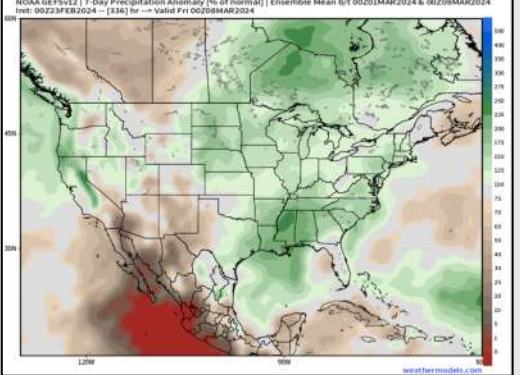
**15-30 Day Temperature Departure**



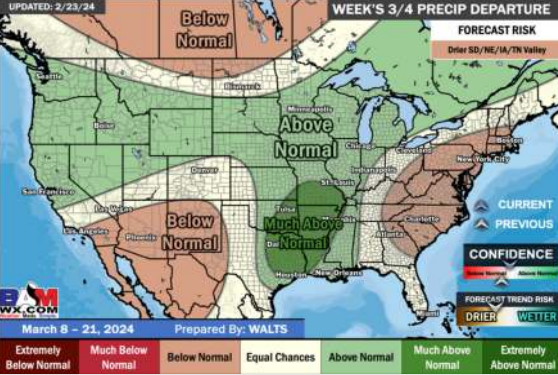
**Next 7 Day Total Precipitation**



**8-14 Day % of Average Precip.**



**15-30 Day % of Average Precip.**



- The next best chance of rain is favored to move in towards the middle / end of next week. Above normal temperatures favored for the week ahead.
- Slightly above normal precipitation chances are at play during the week 2 timeframe. Temps expected to be slightly above normal.
- Seasonable temperatures and above normal chances for precipitation are favored in the weeks 3/4 timeframe.