

# Houston Pilots Forecast Package



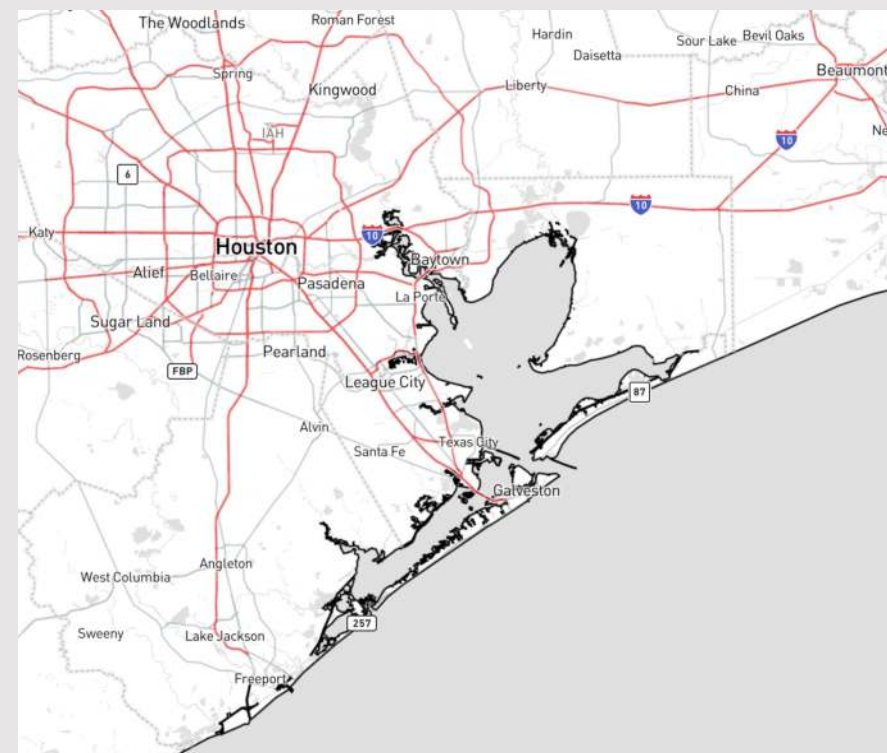
Updated: 1:30 PM CT

Friday, February 23, 2024

Forecaster: Alyssa Elliott

## Weather Headlines

- Favoring dry conditions through the weekend and into the start of next week.
- Wind gusts will remain slightly elevated through the early PM. That being said, winds have shifted out of the N and wave heights continue to decrease.
- Not anticipating any visibility risks over the next few days.



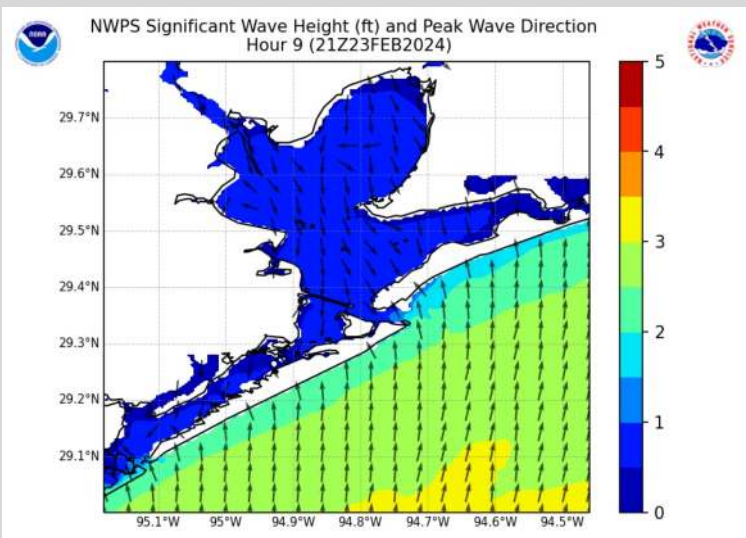
**Radar/NWS Alerts: 1:15 PM CT**



As always, please do not hesitate to reach out to us with any forecast questions via the chat option on Clarity or our on-call number, **(317)-560-8122** press 1 for forecast questions.

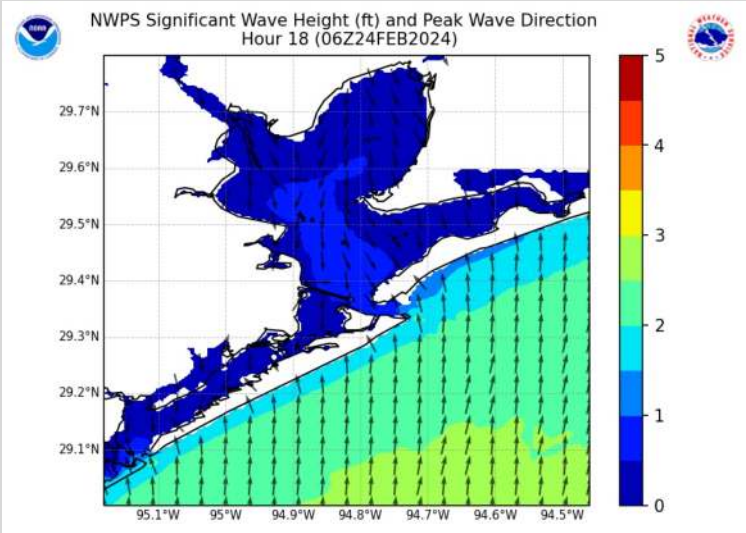
# Houston Pilots Wave Height Update

## Significant Wave Height Image



5 PM CT FRI

Waves heights at the Boarding Station will gradually decrease over the next few hours, dropping to less than 3 ft by 5 PM CT today.



12 AM CT SAT

Waves will not decrease to 1 – 2 ft for 11/12 through the Boarding Station until ~9 PM CT Friday.

# Houston Pilots Extended Range Visibility Report



## Monday 2/26/24

Not favoring visibility concerns at this time for MON.



## Wednesday 2/28/24

As a front approaches from the northwest, will need to monitor for low end potential for patchy fog Wednesday AM. Confidence remains below normal.



## Tuesday 2/27/24

As a front approaches from the northwest, will need to monitor for low end potential for patchy fog late Tuesday PM. Confidence remains below normal.



## Chance for Fog

Monday AM	Unlikely
Monday PM	Unlikely
Tuesday AM	Possible
Tuesday PM	Possible
Wednesday AM	Possible
Wednesday PM	Possible

# Houston Pilots Visibility Chart (miles)



## Forecast Confidence



Time	Fri 2pm	Fri 3pm	Fri 4pm	Fri 5pm	Fri 6pm	Fri 7pm	Fri 8pm	Fri 9pm	Fri 10pm	Fri 11pm	Sat 12am	Sat 1am	Sat 2am	Sat 3am	Sat 4am	Sat 5am	Sat 6am	Sat 7am	Sat 8am	Sat 9am	Sat 10am	Sat 11am	Sat 12pm	Sat 1pm
610 Bridge	10	10	10	10	10	10	10	10	10	10	10	10	10	10	10	10	10	10	10	10	10	10	10	10
Kinder 1	10	10	10	10	10	10	10	10	10	10	10	10	10	10	10	10	10	10	10	10	10	10	10	10
Greens Bayou	10	10	10	10	10	10	10	10	10	10	10	10	10	10	10	10	10	10	10	10	10	10	10	10
Shell Crude	10	10	10	10	10	10	10	10	10	10	10	10	10	10	10	10	10	10	10	10	10	10	10	10
Lynchburg Ferries	10	10	10	10	10	10	10	10	10	10	10	10	10	10	10	10	10	10	10	10	10	10	10	10
Exxon 3	10	10	10	10	10	10	10	10	10	10	10	10	10	10	10	10	10	10	10	10	10	10	10	10
Morgans Point	10	10	10	10	10	10	10	10	10	10	10	10	10	10	10	10	10	10	10	10	10	10	10	10
75/76	10	10	10	10	10	10	10	10	10	10	10	10	10	10	10	10	10	10	10	10	10	10	10	10
63/64	10	10	10	10	10	10	10	10	10	10	10	10	10	10	10	10	10	10	10	10	10	10	10	10
51/52	10	10	10	10	10	10	10	10	10	10	10	10	10	10	10	10	10	10	10	10	10	10	10	10
37/38	10	10	10	10	10	10	10	10	10	10	10	10	10	10	10	10	10	10	10	10	10	10	10	10
25/26	10	10	10	10	10	10	10	10	10	10	10	10	10	10	10	10	10	10	10	10	10	10	10	10
11/12	10	10	10	10	10	10	10	10	10	10	10	10	10	10	10	10	10	10	10	10	10	10	10	10
1 & 2 Bravo	10	10	10	10	10	10	10	10	10	10	10	10	10	10	10	10	10	10	10	10	10	10	10	10

**NOTE: This is automated data that may/may not agree with the official BAM thinking that's found on the daily slides or special visibility report slides. This data should be used as a guide only**

# Houston Pilots Wind Chart



## Forecast Confidence



## Example

Sustained wind 13 Knots  
Gusts 18 Knots  
Wind from the N

WS: 13  
G:18  
N

Time Knots	Fri 2pm	Fri 3pm	Fri 4pm	Fri 5pm	Fri 6pm	Fri 7pm	Fri 8pm	Fri 9pm	Fri 10pm	Fri 11pm	Sat 12am	Sat 1am	Sat 2am	Sat 3am	Sat 4am	Sat 5am	Sat 6am	Sat 7am	Sat 8am	Sat 9am	Sat 10am	Sat 11am	Sat 12pm	Sat 1pm
610 Bridge	10	10	9	9	7	5	5	5	5	4	5	4	3	3	3	2	2	2	2	3	3	4	4	5
	20	20	19	16	14	12	11	12	11	9	9	7	7	5	4	3	4	4	4	5	6	7	8	9
	N	N	N	NNW	NNW	N	NNW	NNW	N	N	N	N	NNW	NNW	NNW	NW	W	W	W	W	W	NNW	WNW	WNW
Kinder 1	10	9	9	9	7	6	5	6	5	4	5	4	3	3	3	2	2	2	2	3	3	4	4	4
	20	20	18	16	14	12	11	12	11	9	9	7	7	5	4	4	4	4	4	5	6	7	8	9
	N	N	N	N	NNW	N	NNW	NNW	NNW	N	N	N	NNW	NNW	NNW	NW	W	W	W	W	W	NNW	WNW	WNW
Greens Bayou	10	9	9	9	7	5	5	5	5	4	5	4	3	3	3	2	2	2	2	3	3	4	4	5
	19	19	18	16	14	12	10	12	10	9	9	8	7	5	4	4	4	4	4	5	5	7	8	9
	N	NNW	NNW	NNW	NNW	NNW	NNW	NNW	NNW	NNW	NNW	N	NNW	NNW	NNW	NW	W	W	W	W	W	W	WNW	NW
Shell Crude	10	9	9	9	7	6	5	5	5	4	4	4	4	3	3	2	2	2	2	3	3	4	4	4
	19	18	17	15	13	12	11	11	10	9	8	8	7	6	5	4	4	4	4	5	6	7	8	8
	N	N	NNW	NNW	NNW	NNW	NNW	NNW	NNW	N	NNW	N	NNW	NNW	NNW	NW	W	W	W	W	W	W	WNW	NW
Lynchburg Ferries	11	10	9	8	7	5	5	6	5	4	4	4	3	3	3	2	2	2	2	3	3	4	4	4
	19	19	17	16	13	11	11	12	10	8	8	8	7	6	4	4	4	4	4	5	6	7	8	8
	N	N	NNW	N	NNW	NNW	NNW	NNW	NNW	N	NNW	NNW	NNW	NNW	NNW	NW	WNW	W	W	W	W	W	WNW	NW
Exxon 3	11	11	11	10	8	7	7	7	5	5	4	4	4	3	3	3	3	2	3	3	3	4	4	5
	19	19	18	16	14	11	11	12	11	10	8	8	8	7	5	4	4	4	5	6	7	7	8	9
	N	N	N	N	N	NNW	NNW	NNW	N	N	NNW	N	N	NNW	N	NNW	NW	WNW	WNW	NW	WNW	WNW	WNW	NW
Morgans Point	11	11	11	9	7	7	6	6	5	5	4	4	4	3	3	3	3	2	3	3	3	3	4	4
	19	18	18	16	14	12	11	12	11	10	9	8	8	6	5	4	5	4	5	5	6	7	8	9
	N	N	NNW	NNW	NNW	NNW	NNW	NNW	NNW	N	NNW	NNW	N	NNW	NNW	NNW	WNW	WNW	W	W	W	W	WNW	WNW
75/76	12	12	13	12	11	9	9	8	8	7	7	7	6	5	5	5	5	5	5	4	4	4	4	5
	20	21	20	18	16	13	13	12	12	11	10	10	9	7	7	6	6	6	6	8	8	8	8	10
	N	N	N	N	N	NNW	NNW	NNW	N	N	N	N	N	N	N	NNW	NNW	NW	WNW	WNW	W	W	WSW	S
63/64	11	11	11	11	10	9	9	8	8	7	7	7	6	5	5	4	3	3	4	4	4	4	4	5
	19	20	18	17	15	13	13	12	12	11	10	9	8	7	6	5	5	6	7	8	7	8	10	
	N	N	N	N	N	N	NNW	NNW	N	N	N	N	N	N	N	NNW	NNW	NW	WNW	WNW	WNW	W	SSW	S
51/52	10	10	10	10	9	9	8	7	8	7	7	6	5	5	3	3	3	3	3	3	3	3	4	5
	17	17	16	14	13	13	12	11	12	10	10	9	7	6	5	4	4	5	6	6	6	7	8	10
	NNW	NNW	N	N	N	N	NNW	NNW	N	N	N	N	N	N	N	NNW	NNW	NW	WNW	WNW	WNW	WNW	NW	SSE
37/38	9	10	9	10	9	9	8	7	7	7	7	6	5	5	3	3	3	3	3	3	3	3	4	5
	17	17	17	14	13	13	12	11	11	10	10	9	8	6	5	4	4	4	5	6	6	7	8	9
	NNW	NNW	N	N	N	N	NNW	NNW	N	N	N	N	N	N	N	NNW	NNW	NW	WNW	WNW	WNW	WNW	N	SSE
25/26	9	9	9	9	9	8	8	7	7	7	7	6	5	5	3	3	2	3	3	3	3	3	4	5
	16	17	16	14	13	12	12	12	11	11	10	9	8	6	4	4	4	4	5	6	6	7	8	9
	NNW	NNW	NNW	N	N	N	NNW	NNW	NNW	N	N	N	N	N	N	N	NNW	NW	WNW	WNW	WNW	WNW	W	S
11/12	10	9	9	9	7	7	7	6	6	5	5	4	3	2	2	2	2	2	3	3	3	4	5	5
	16	16	15	13	12	11	11	11	11	11	10	9	7	6	5	4	4	4	4	6	6	7	8	8
	NNW	NNW	NNW	N	N	N	NNW	NNW	NNW	N	N	N	N	N	N	NNW	NNW	NW	WNW	WNW	W	W	W	WSW
1 & 2 Bravo	9	9	9	10	9	9	9	9	9	9	9	8	7	7	5	4	3	3	3	4	5	5	5	5
	14	15	16	15	14	13	13	13	13	13	13	12	11	9	7	6	5	5	5	7	8	8	9	9
	NNW	NNW	NNW	NNW	NNW	NNW	NNW	NNW	NNW	N	N	N	N	N	N	N	N	NW	NW	NW	WNW	W	W	SW

NOTE: This is automated data that may/may not agree with the official BAM thinking that's found on the daily slides or special visibility report slides. This data should be used as a guide only

# Houston Pilots: Fri. 2/23/2024



## Forecast Discussion

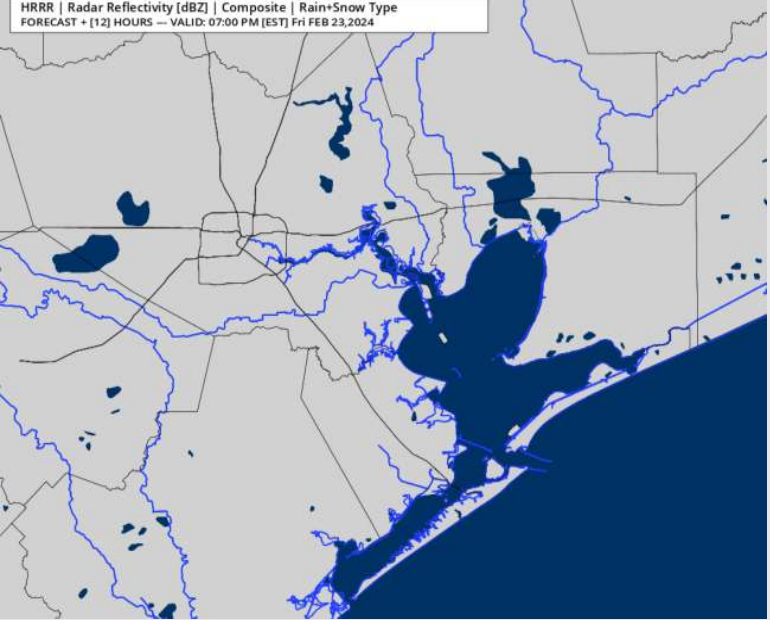
**Precip:** Favoring dry conditions for today.

**Wind:** Winds will remain out of the N for the rest of the day. **N Morgan's Point:** 7 – 12 kts throughout the day. **S of Morgan's Point:** Winds at 13 – 18 kts calming to 8 – 13 kts for the remainder of the day. A few gusts of up to 24 – 29 kts will be possible through 7 PM CT.

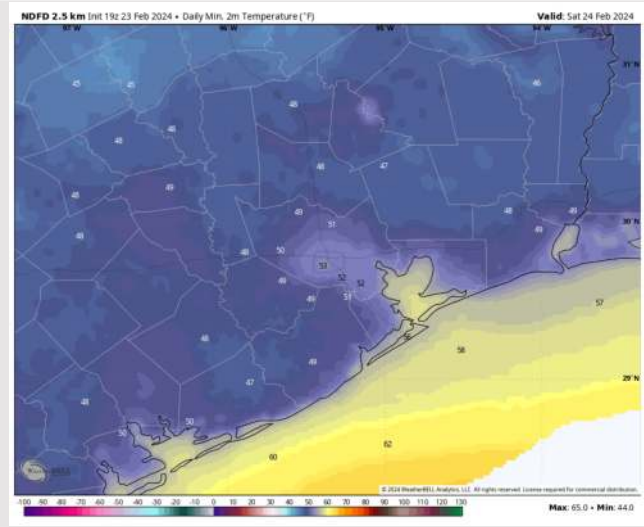
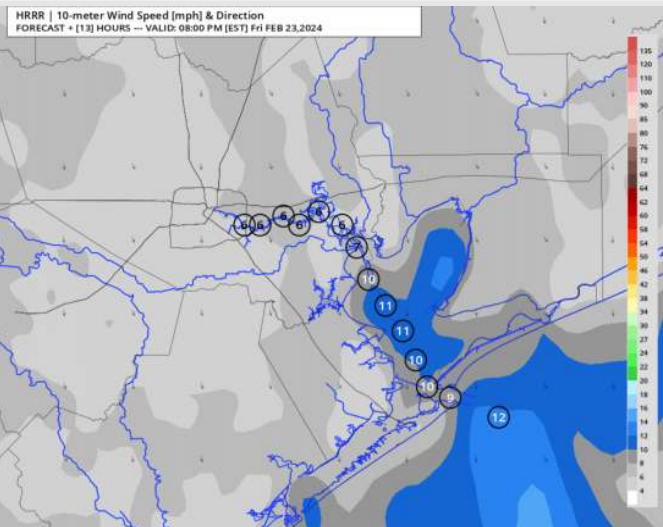
**Low Temps:** **N of Morgan's Point:** Low 50s F. **S of Morgan's Point:** Upper 50s F.

**Visibility:** Not anticipating any fog concerns the rest of the PM.

## Precip Image: 6 PM CT



Wind Speed:  
7 PM CT



Low Temps  
SAT AM

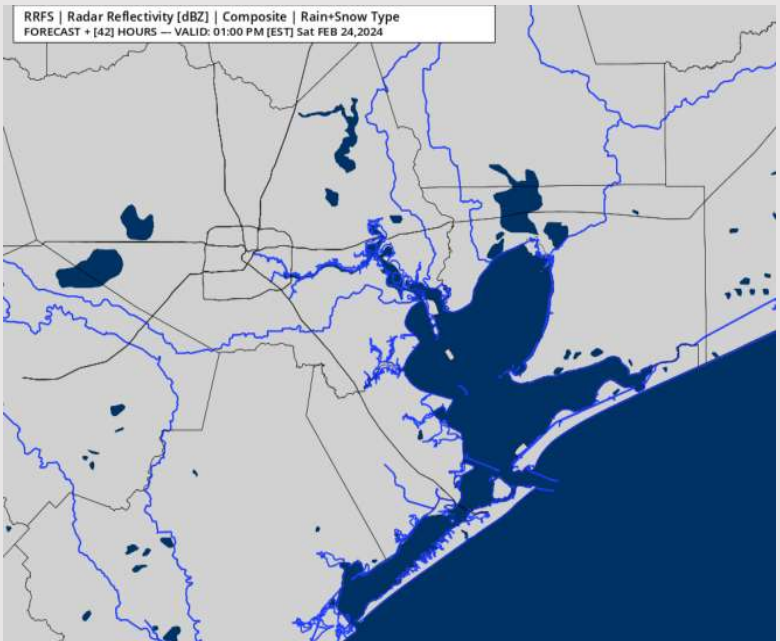
# Houston Pilots: sat. 2/24/2024



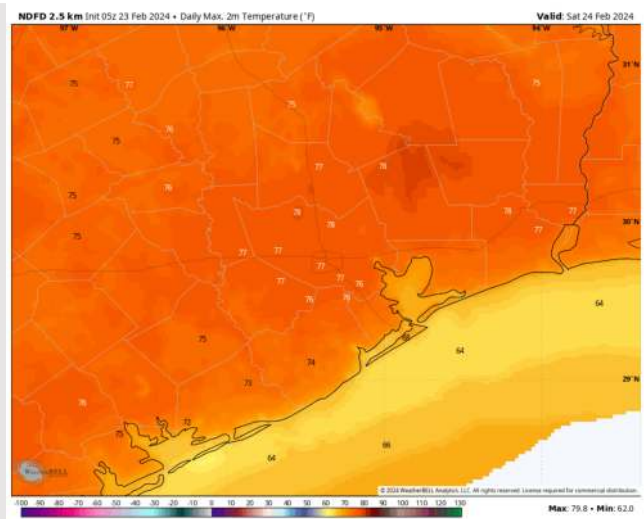
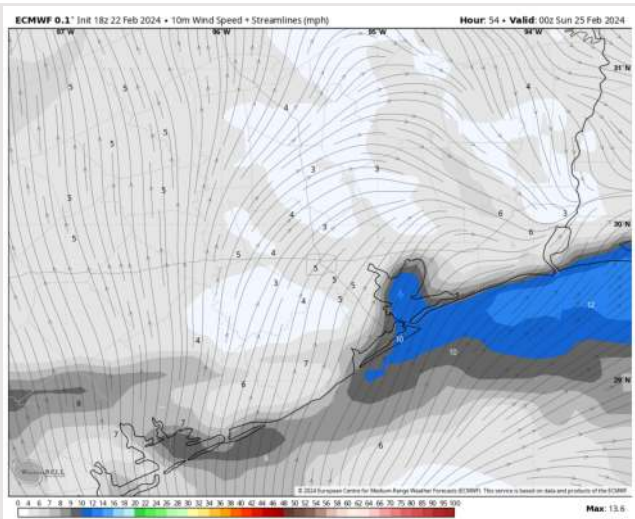
## Forecast Discussion

- Precip:** Favoring dry conditions for Saturday.
- Wind:** Winds out of the N/NW through 7AM before becoming variable as a weak front works through. **N Morgan's Point:** Winds at 3 – 6 kts for the entire day. **S of Morgan's Point:** Winds at 3 – 6 kts through 6PM before becoming 4 - 8 kts.
- High Temps:** **N of Morgan's Point:** Mid 70s F. **S of Morgan's Point:** Low 60s F.
- Visibility:** No fog risks favored for Saturday.

## Precip Image: 12 PM CT



Wind Speed:  
6 PM CT



High Temps  
Saturday

# Houston Pilots: Sun. 2/25/2024



## Forecast Discussion

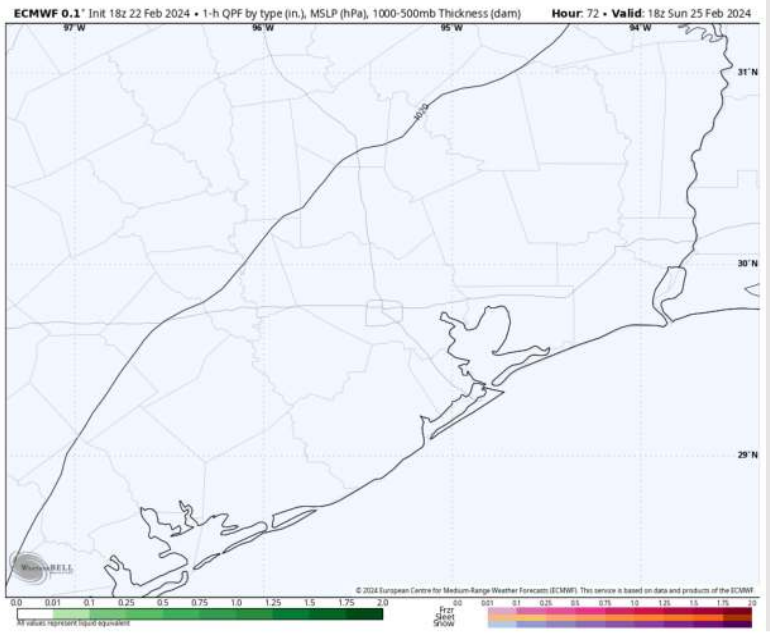
**Precip:** Favoring dry conditions for Sunday.

**Wind:** Winds out of the SW during much of the AM shift out of the S by 10 AM. **N of Morgan's Point:** Winds will be at 3-8 kts through 11 AM, increasing to 7-12 kts after that time. **S of Morgan's Point:** Winds at 5-10 kts through 11 AM, increasing to 8-13 kts after that time. **Wind gusts of 20-25 kts possible N of Morgan's Point after 11 AM.**

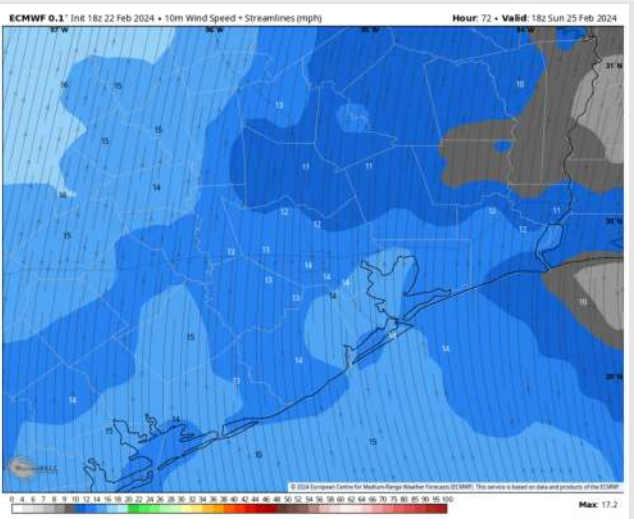
**High Temps:** **N of Morgan's Point:** Upper 70s F. **S of Morgan's Point:** Mid-Upper 60s F.

**Visibility:** Not anticipating visibility concerns at this time.

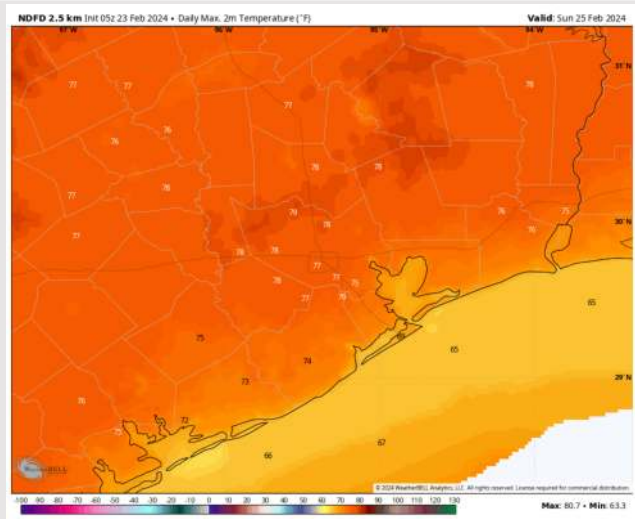
## Precip Image: 12 PM CT



Wind Speed:  
12 PM CT



High Temps  
Sunday

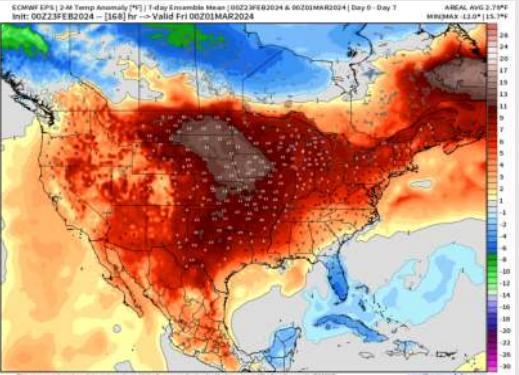




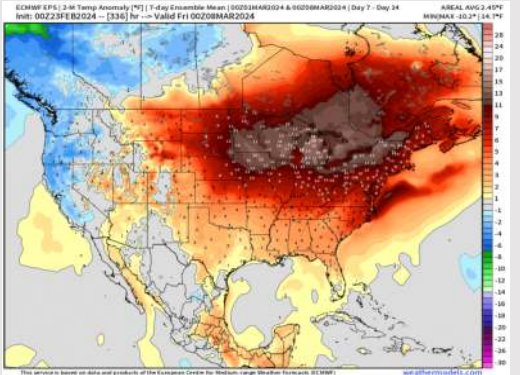
# Houston Pilots: 2/23/24



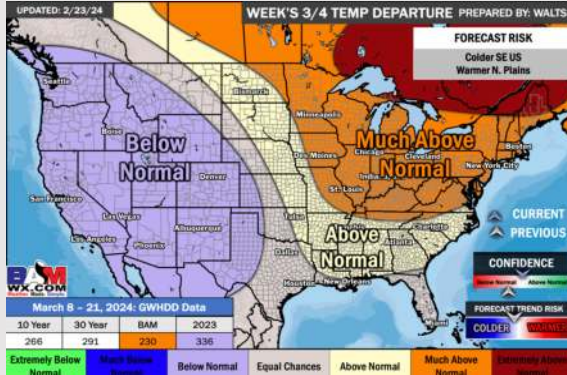
**Next 7 Day Temperature Departure**



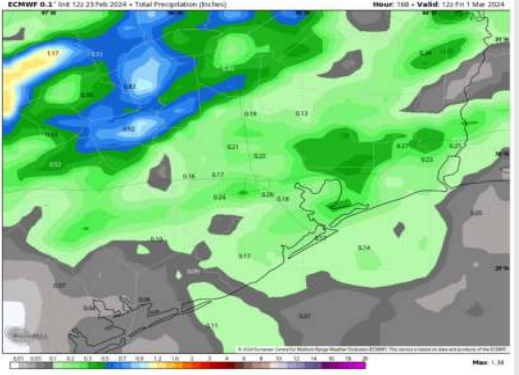
**8-14 Day Temperature Departure**



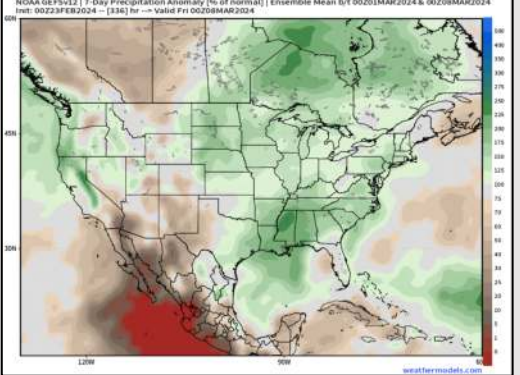
**15-30 Day Temperature Departure**



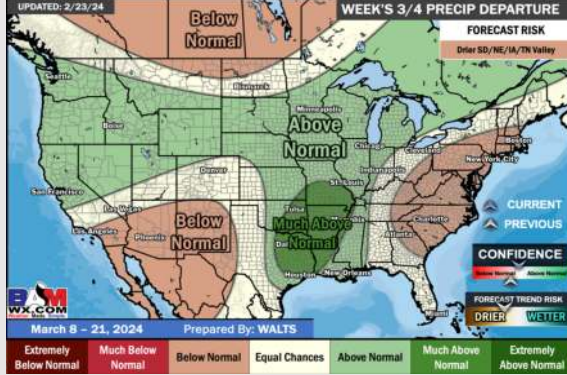
**Next 7 Day Total Precipitation**



**8-14 Day % of Average Precip.**



**15-30 Day % of Average Precip.**



- The next best chance of rain is favored to move in towards the middle / end of next week. Above normal temperatures favored for the week ahead.
- Slightly above normal precipitation chances are at play during the week 2 timeframe. Temps expected to be slightly above normal.
- Seasonable temperatures and above normal chances for precipitation are favored in the weeks 3/4 timeframe.