

# Houston Pilots Forecast Package



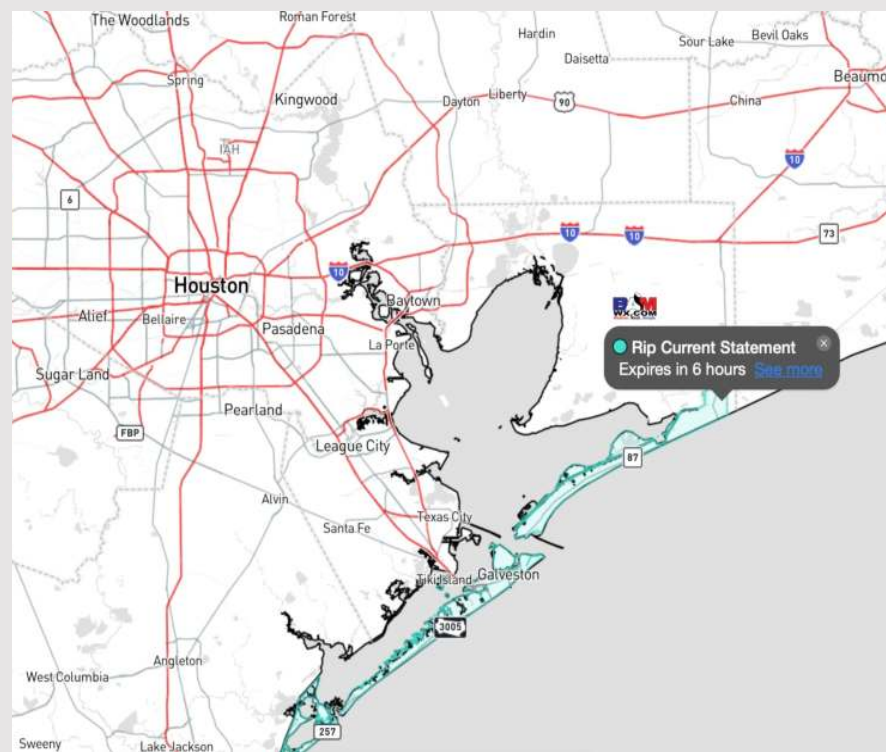
Updated: 7:00 PM CT

Thursday, February 22, 2024

Forecaster: Tyler Riggles

## Weather Headlines

- Favoring dry conditions through the end of the week / into the weekend.
- Winds will remain slightly elevated through Friday. Wave heights may reach 3 – 4 ft at the Boarding Station this PM.
- Low end visibility risk for stations 25/26 through the Boarding Station through early Fri AM.



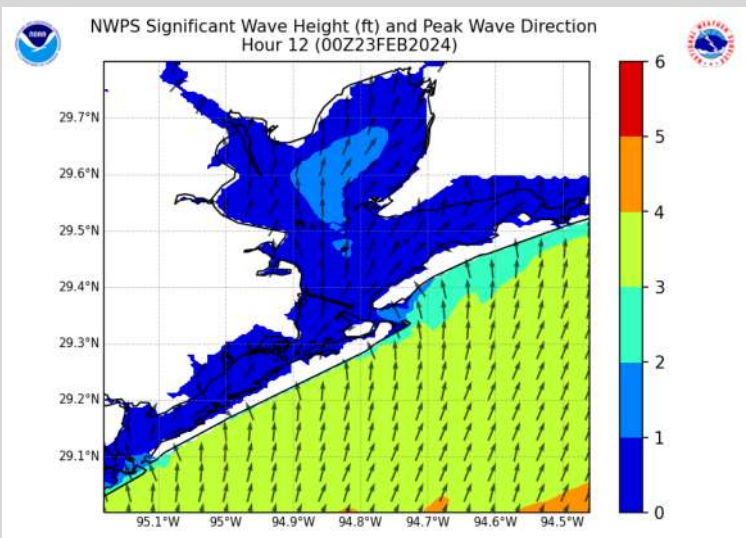
**Radar/NWS Alerts: 1:15 PM CT**



As always, please do not hesitate to reach out to us with any forecast questions via the chat option on Clarity or our on-call number, **(317)-560-8122** press 1 for forecast questions.

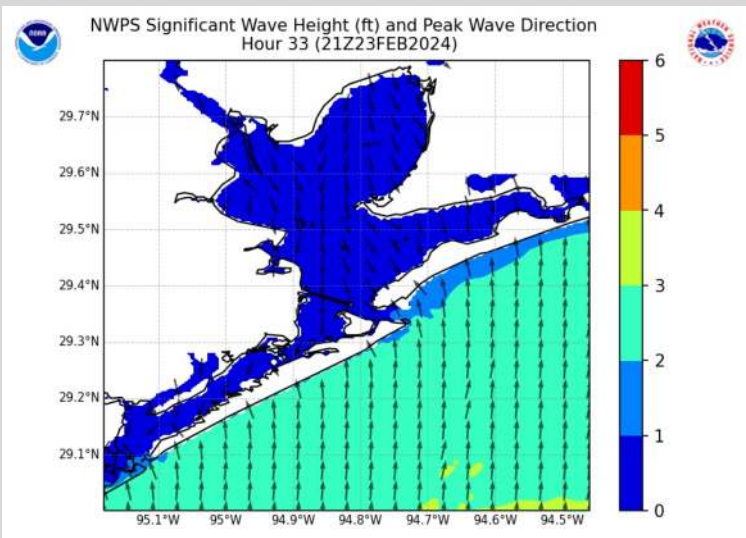
# Houston Pilots Wave Height Update

## Significant Wave Height Image



6 PM CT THU

Wave heights are slightly elevated to 2 – 3 ft at stations 11/12 and 3 – 4 ft at the Boarding Station this afternoon as winds continue out of the S/SW.



3 PM CT FRI

Waves at the Boarding Station will decrease to 2 – 3 ft at the Boarding Station by 12 AM CT Friday. Waves will not decrease to 1 – 2 ft for 11/12 through the Boarding Station until ~9 PM CT Friday.

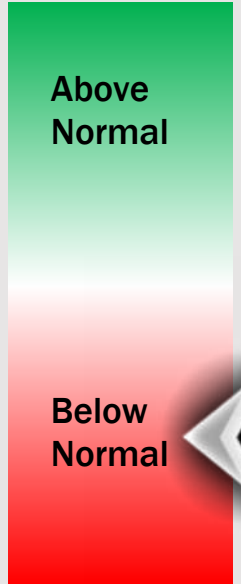
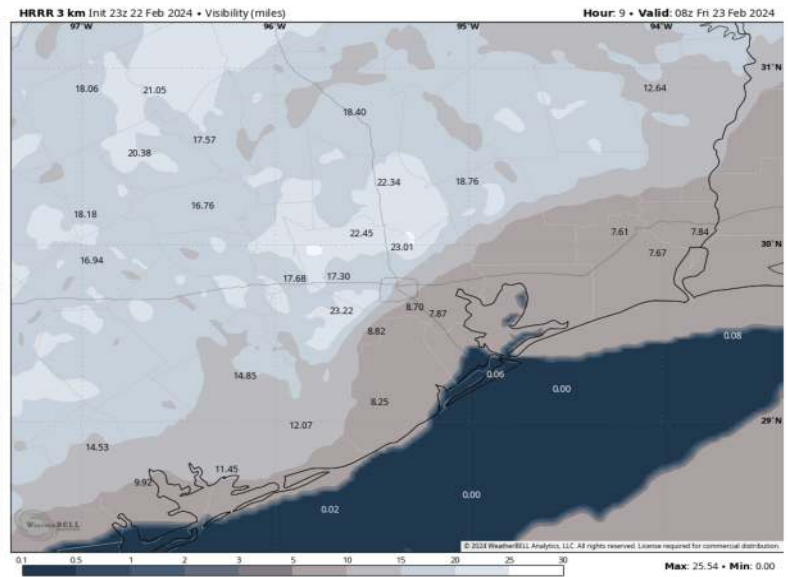
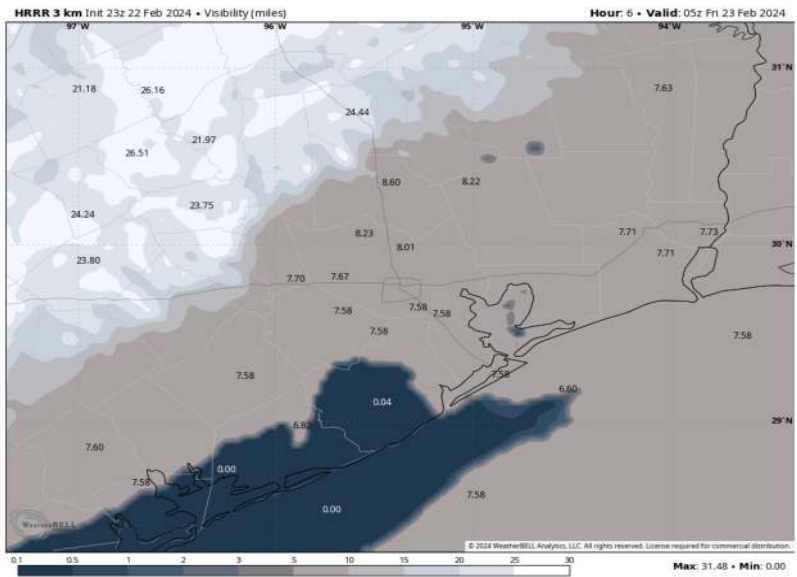
# Houston Pilots Visibility Report



## 11 PM CT THU VISIBILITY

## 2 AM CT FRI VISIBILITY

## Confidence



| TIMEFRAME DISCUSSED  | THREAT |
|----------------------|--------|
| 10 PM THU – 3 AM FRI | Low    |

- Anticipating a low-end risk for reduced visibility / patchy fog at Station 25/26 through the Boarding Station between 10 PM tonight and 3 AM CT tomorrow out ahead of a weak front. Some brief patches of fog may also occur towards Stations 37/38 through 63/64 during this period, however this would be an even lower risk in our opinion. Visibility may reduce to 1 – 3 miles with the greatest risk occurring over the Boarding Station.
- Confidence remains low, however winds out of the SW would be favorable for this temporary fog development before winds shift out of the NW early Friday morning.
- Fog is expected to remain primarily over the Gulf with the risk just clipping the shoreline before winds shift and push fog E. off the coast right around 3 AM Friday, clearing up any visibility concerns.

# Houston Pilots Extended Range Visibility Report



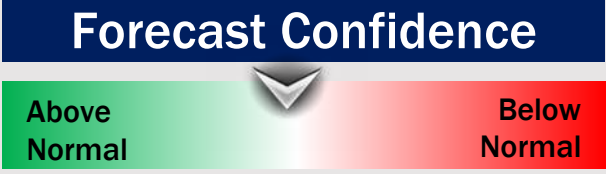
## Sunday 2/25/24

Not favoring visibility concerns at this time for SUN.



## Monday 2/26/24

Not favoring visibility concerns on MON.



## Tuesday 2/27/24

As a front approaches from the northwest, will need to monitor for low end potential for patchy fog either Tuesday AM or late Tuesday PM. Confidence remains below normal.



## Chance for Fog

|            |          |
|------------|----------|
| Sunday AM  | Unlikely |
| Sunday PM  | Unlikely |
| Monday AM  | Unlikely |
| Monday PM  | Unlikely |
| Tuesday AM | Possible |
| Tuesday PM | Possible |

# Houston Pilots Visibility Chart (miles)



## Forecast Confidence



| Time              | Thu 1pm | Thu 2pm | Thu 3pm | Thu 4pm | Thu 5pm | Thu 6pm | Thu 7pm | Thu 8pm | Thu 9pm | Thu 10pm | Thu 11pm | Fri 12am | Fri 1am | Fri 2am | Fri 3am | Fri 4am | Fri 5am | Fri 6am | Fri 7am | Fri 8am | Fri 9am | Fri 10am | Fri 11am | Fri 12pm |
|-------------------|---------|---------|---------|---------|---------|---------|---------|---------|---------|----------|----------|----------|---------|---------|---------|---------|---------|---------|---------|---------|---------|----------|----------|----------|
| 610 Bridge        | 10      | 10      | 10      | 10      | 10      | 10      | 10      | 10      | 10      | 10       | 10       | 10       | 10      | 10      | 10      | 10      | 10      | 10      | 10      | 10      | 10      | 10       | 10       | 10       |
| Kinder 1          | 10      | 10      | 10      | 10      | 10      | 10      | 10      | 10      | 10      | 10       | 10       | 10       | 10      | 10      | 10      | 10      | 10      | 10      | 10      | 10      | 10      | 10       | 10       | 10       |
| Greens Bayou      | 10      | 10      | 10      | 10      | 10      | 10      | 10      | 10      | 10      | 10       | 10       | 10       | 10      | 10      | 10      | 10      | 10      | 10      | 10      | 10      | 10      | 10       | 10       | 10       |
| Shell Crude       | 10      | 10      | 10      | 10      | 10      | 10      | 10      | 10      | 10      | 10       | 10       | 10       | 10      | 10      | 10      | 10      | 10      | 10      | 10      | 10      | 10      | 10       | 10       | 10       |
| Lynchburg Ferries | 10      | 10      | 10      | 10      | 10      | 10      | 10      | 10      | 10      | 10       | 10       | 10       | 10      | 10      | 10      | 10      | 10      | 10      | 10      | 10      | 10      | 10       | 10       | 10       |
| Exxon 3           | 10      | 10      | 10      | 10      | 10      | 10      | 10      | 10      | 10      | 10       | 10       | 10       | 10      | 10      | 10      | 10      | 10      | 10      | 10      | 10      | 10      | 10       | 10       | 10       |
| Morgans Point     | 10      | 10      | 10      | 10      | 10      | 10      | 10      | 10      | 10      | 10       | 10       | 10       | 10      | 10      | 10      | 10      | 10      | 10      | 10      | 10      | 10      | 10       | 10       | 10       |
| 75/76             | 10      | 10      | 10      | 10      | 10      | 10      | 10      | 10      | 5       | 10       | 7        | 6        | 9       | 10      | 10      | 10      | 10      | 10      | 10      | 10      | 10      | 10       | 10       | 10       |
| 63/64             | 10      | 10      | 10      | 10      | 10      | 10      | 10      | 10      | 5       | 10       | 7        | 6        | 9       | 10      | 10      | 10      | 10      | 10      | 10      | 10      | 10      | 10       | 10       | 10       |
| 51/52             | 10      | 10      | 10      | 10      | 10      | 10      | 10      | 10      | 9       | 9        | 7        | 6        | 6       | 9       | 7       | 10      | 10      | 10      | 10      | 10      | 10      | 10       | 10       | 10       |
| 37/38             | 10      | 10      | 10      | 10      | 10      | 10      | 10      | 10      | 3       | 5        | 3        | 2        | 6       | 9       | 6       | 10      | 10      | 10      | 10      | 10      | 10      | 10       | 10       | 10       |
| 25/26             | 10      | 10      | 10      | 10      | 10      | 10      | 10      | 10      | 3       | 5        | 3        | 2        | 6       | 9       | 6       | 10      | 10      | 10      | 10      | 10      | 10      | 10       | 10       | 10       |
| 11/12             | 10      | 10      | 10      | 10      | 10      | 10      | 10      | 10      | 3       | 4        | 3        | 2        | 5       | 6       | 5       | 10      | 10      | 10      | 10      | 10      | 10      | 10       | 10       | 10       |
| 1 & 2 Bravo       | 10      | 7       | 7       | 10      | 6       | 10      | 10      | 10      | 3       | 2        | 0.5      | 0.3      | 0.3     | 0.8     | 0.5     | 10      | 10      | 10      | 10      | 10      | 10      | 10       | 10       | 10       |

**NOTE: This is automated data that may/may not agree with the official BAM thinking that's found on the daily slides or special visibility report slides. This data should be used as a guide only**



# Houston Pilots Wind Chart



## Forecast Confidence



## Example

Sustained wind 13 Knots  
Gusts 18 Knots  
Wind from the N

WS: 13  
G:18  
N

| Time Knots        | Thu 1pm | Thu 2pm | Thu 3pm | Thu 4pm | Thu 5pm | Thu 6pm | Thu 7pm | Thu 8pm | Thu 9pm | Thu 10pm | Thu 11pm | Fri 12am | Fri 1am | Fri 2am | Fri 3am | Fri 4am | Fri 5am | Fri 6am | Fri 7am | Fri 8am | Fri 9am | Fri 10am | Fri 11am | Fri 12pm |
|-------------------|---------|---------|---------|---------|---------|---------|---------|---------|---------|----------|----------|----------|---------|---------|---------|---------|---------|---------|---------|---------|---------|----------|----------|----------|
| 610 Bridge        | 13      | 11      | 9       | 9       | 8       | 6       | 5       | 5       | 5       | 5        | 5        | 5        | 5       | 7       | 8       | 9       | 9       | 9       | 9       | 9       | 11      | 11       | 11       | 11       |
|                   | 25      | 21      | 19      | 17      | 13      | 12      | 11      | 10      | 11      | 11       | 10       | 10       | 12      | 13      | 16      | 18      | 19      | 18      | 20      | 20      | 21      | 21       | 21       | 21       |
|                   | SW      | SW      | SW      | SW      | SSW     | SSW     | SSW     | SSW     | SSW     | SW       | W        | W        | WNW     | NW      | NNW     | NNW     | NNW     | NNW     | N       | N       | N       | N        | N        | N        |
| Kinder 1          | 12      | 11      | 9       | 9       | 8       | 6       | 5       | 5       | 5       | 5        | 5        | 5        | 5       | 7       | 8       | 9       | 9       | 9       | 9       | 9       | 11      | 10       | 10       | 11       |
|                   | 24      | 21      | 19      | 16      | 13      | 12      | 11      | 10      | 11      | 11       | 10       | 11       | 11      | 13      | 16      | 17      | 19      | 18      | 19      | 19      | 21      | 21       | 21       | 21       |
|                   | SW      | SW      | SW      | SW      | SSW     | SSW     | SSW     | SSW     | SSW     | SW       | W        | W        | WNW     | NW      | NNW     | NNW     | NNW     | NNW     | N       | N       | N       | N        | N        | N        |
| Greens Bayou      | 11      | 10      | 9       | 9       | 8       | 6       | 5       | 5       | 5       | 5        | 5        | 5        | 5       | 7       | 8       | 9       | 9       | 9       | 9       | 9       | 11      | 10       | 10       | 11       |
|                   | 23      | 21      | 19      | 16      | 14      | 12      | 11      | 10      | 11      | 11       | 10       | 10       | 11      | 13      | 15      | 16      | 17      | 18      | 18      | 19      | 21      | 21       | 21       | 21       |
|                   | SW      | SW      | SW      | SW      | SSW     | SSW     | SSW     | SSW     | SSW     | SW       | W        | W        | WNW     | NW      | NNW     | NNW     | NNW     | NNW     | N       | N       | N       | N        | N        | N        |
| Shell Crude       | 11      | 10      | 9       | 9       | 8       | 6       | 5       | 5       | 5       | 5        | 5        | 5        | 5       | 7       | 8       | 9       | 9       | 9       | 9       | 9       | 11      | 10       | 10       | 10       |
|                   | 22      | 21      | 19      | 17      | 14      | 13      | 11      | 10      | 11      | 11       | 10       | 10       | 11      | 13      | 14      | 15      | 16      | 17      | 18      | 19      | 21      | 21       | 21       | 21       |
|                   | SW      | SW      | SSW     | SW      | SSW     | SSW     | SSW     | SSW     | SSW     | SW       | W        | W        | WNW     | NW      | NNW     | NNW     | NNW     | NNW     | NNW     | N       | N       | N        | N        | N        |
| Lynchburg Ferries | 11      | 10      | 9       | 9       | 7       | 6       | 5       | 5       | 5       | 5        | 5        | 5        | 5       | 6       | 7       | 8       | 8       | 9       | 9       | 9       | 11      | 10       | 11       | 11       |
|                   | 21      | 20      | 19      | 16      | 13      | 12      | 11      | 10      | 11      | 10       | 10       | 10       | 11      | 13      | 14      | 16      | 16      | 18      | 18      | 18      | 21      | 21       | 20       | 21       |
|                   | SW      | SW      | SSW     | SSW     | SSW     | SSW     | SSW     | SSW     | SSW     | SW       | W        | W        | WNW     | NW      | NNW     | NNW     | NNW     | NNW     | NNW     | N       | N       | N        | N        | N        |
| Exxon 3           | 11      | 10      | 10      | 10      | 9       | 8       | 8       | 8       | 8       | 7        | 6        | 6        | 7       | 7       | 8       | 9       | 10      | 11      | 11      | 11      | 12      | 12       | 11       | 11       |
|                   | 21      | 20      | 20      | 17      | 14      | 13      | 12      | 12      | 12      | 11       | 11       | 11       | 12      | 13      | 14      | 16      | 17      | 18      | 18      | 19      | 21      | 21       | 20       | 20       |
|                   | SSW     | SW      | SSW     | SSW     | SSW     | SSW     | SSW     | SSW     | SSW     | SW       | W        | W        | WNW     | NW      | NNW     | NNW     | NNW     | NNW     | NNW     | N       | N       | N        | N        | N        |
| Morgans Point     | 10      | 9       | 10      | 9       | 9       | 8       | 8       | 8       | 7       | 7        | 5        | 6        | 6       | 7       | 8       | 9       | 9       | 10      | 11      | 11      | 11      | 11       | 11       | 11       |
|                   | 21      | 20      | 18      | 17      | 14      | 13      | 12      | 12      | 11      | 11       | 10       | 11       | 12      | 13      | 15      | 16      | 17      | 18      | 19      | 20      | 21      | 21       | 20       | 20       |
|                   | SSW     | SSW     | SSW     | SSW     | SSW     | SSW     | SSW     | SSW     | SW      | SW       | W        | W        | WNW     | NW      | NNW     | NNW     | NNW     | NNW     | NNW     | N       | N       | N        | N        | N        |
| 75/76             | 11      | 11      | 11      | 13      | 13      | 13      | 12      | 11      | 10      | 9        | 9        | 9        | 9       | 9       | 11      | 12      | 14      | 15      | 15      | 15      | 15      | 13       | 12       | 11       |
|                   | 20      | 20      | 19      | 20      | 19      | 18      | 17      | 16      | 15      | 13       | 13       | 13       | 13      | 14      | 15      | 18      | 21      | 22      | 22      | 21      | 22      | 21       | 21       | 21       |
|                   | SSW     | SSW     | SSW     | SSW     | SSW     | SSW     | SSW     | SSW     | SW      | WSW      | W        | W        | WNW     | NW      | NW      | NNW     | NNW     | NNW     | NNW     | N       | N       | N        | N        | N        |
| 63/64             | 11      | 11      | 11      | 13      | 13      | 12      | 12      | 11      | 9       | 9        | 9        | 8        | 9       | 9       | 10      | 12      | 13      | 15      | 15      | 14      | 14      | 12       | 11       | 10       |
|                   | 19      | 19      | 19      | 18      | 19      | 17      | 17      | 15      | 14      | 13       | 13       | 12       | 13      | 13      | 15      | 17      | 20      | 21      | 21      | 21      | 22      | 21       | 20       | 19       |
|                   | SSW     | SSW     | SSW     | SSW     | SSW     | SSW     | SSW     | SSW     | SSW     | SW       | WSW      | W        | W       | WNW     | NW      | NNW     | NNW     | NNW     | NNW     | N       | N       | N        | N        | N        |
| 51/52             | 11      | 11      | 11      | 12      | 12      | 12      | 11      | 10      | 9       | 9        | 8        | 8        | 9       | 8       | 10      | 11      | 13      | 14      | 14      | 14      | 14      | 12       | 11       | 10       |
|                   | 20      | 18      | 17      | 17      | 18      | 17      | 16      | 14      | 13      | 13       | 12       | 12       | 13      | 12      | 14      | 15      | 18      | 21      | 21      | 21      | 21      | 20       | 20       | 18       |
|                   | SSW     | SSW     | SSW     | SSW     | SSW     | SSW     | SSW     | SSW     | SSW     | SW       | WSW      | W        | W       | WNW     | NW      | NNW     | NNW     | NNW     | NNW     | N       | N       | N        | N        | N        |
| 37/38             | 11      | 11      | 11      | 12      | 12      | 12      | 11      | 9       | 9       | 9        | 8        | 7        | 8       | 8       | 9       | 11      | 12      | 13      | 14      | 15      | 14      | 13       | 11       | 10       |
|                   | 18      | 17      | 18      | 17      | 17      | 17      | 16      | 14      | 13      | 13       | 12       | 11       | 12      | 12      | 14      | 15      | 18      | 19      | 21      | 21      | 23      | 21       | 19       | 18       |
|                   | SSW     | SSW     | SSW     | SSW     | SSW     | SSW     | SSW     | SSW     | SW      | SW       | WSW      | W        | W       | WNW     | NW      | NNW     | NNW     | NNW     | NNW     | N       | N       | N        | N        | N        |
| 25/26             | 11      | 11      | 11      | 12      | 11      | 10      | 9       | 8       | 8       | 8        | 8        | 7        | 8       | 8       | 9       | 10      | 11      | 13      | 13      | 14      | 13      | 12       | 11       | 11       |
|                   | 19      | 17      | 16      | 17      | 17      | 16      | 14      | 14      | 13      | 12       | 12       | 10       | 12      | 12      | 13      | 14      | 16      | 18      | 19      | 21      | 22      | 21       | 19       | 17       |
|                   | SSW     | SSW     | SSW     | SSW     | SSW     | SSW     | SSW     | SSW     | SW      | SW       | WSW      | W        | W       | WNW     | NW      | NNW     | NNW     | NNW     | NNW     | N       | N       | N        | N        | N        |
| 11/12             | 11      | 10      | 10      | 11      | 10      | 9       | 8       | 8       | 7       | 7        | 6        | 6        | 7       | 7       | 9       | 10      | 11      | 11      | 11      | 12      | 13      | 12       | 12       | 11       |
|                   | 17      | 16      | 15      | 15      | 14      | 13      | 12      | 12      | 11      | 11       | 10       | 10       | 11      | 11      | 13      | 14      | 15      | 16      | 19      | 20      | 21      | 20       | 18       | 17       |
|                   | SSW     | SSW     | SSW     | SSW     | SSW     | SSW     | SSW     | SSW     | SW      | SW       | WSW      | W        | W       | WNW     | NW      | NNW     | NNW     | NNW     | NNW     | N       | N       | N        | N        | N        |
| 1 & 2 Bravo       | 10      | 9       | 9       | 11      | 11      | 11      | 11      | 10      | 11      | 10       | 10       | 9        | 9       | 9       | 11      | 11      | 13      | 13      | 14      | 14      | 14      | 13       | 11       | 10       |
|                   | 16      | 15      | 14      | 15      | 16      | 16      | 15      | 15      | 15      | 15       | 15       | 13       | 13      | 14      | 15      | 16      | 19      | 19      | 21      | 21      | 23      | 20       | 17       | 15       |
|                   | SSW     | SSW     | SSW     | SSW     | SSW     | SSW     | SSW     | SSW     | SSW     | SW       | SW       | WSW      | W       | W       | WNW     | NW      | NNW     | NNW     | NNW     | N       | N       | N        | N        | N        |

NOTE: This is automated data that may/may not agree with the official BAM thinking that's found on the daily slides or special visibility report slides. This data should be used as a guide only

# Houston Pilots: Thu. 2/22/2024



## Forecast Discussion

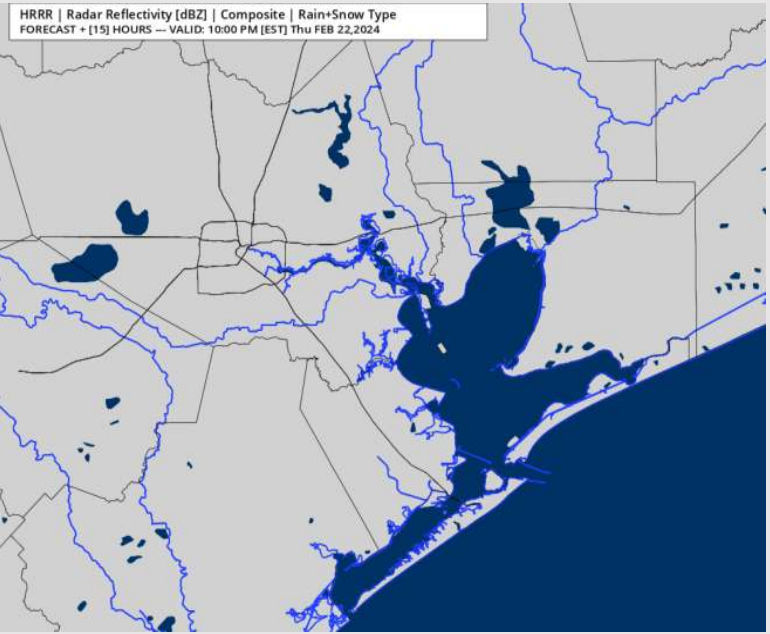
**Precip:** Favoring dry conditions for the rest of the day.

**Wind:** Winds will be out of the S/SW throughout this PM. **N of Morgan's Point:** Winds will be at 13 – 18 kts through 4 PM before decreasing to 5 - 10 kts the rest of the evening. **S of Morgan's Point:** Winds at 13 – 18 kts for the rest of the evening. **Wind gusts of 22 – 27 kts will be possible through 7 PM, then gusts of 20 kts will continue to be a risk through the rest of the evening.**

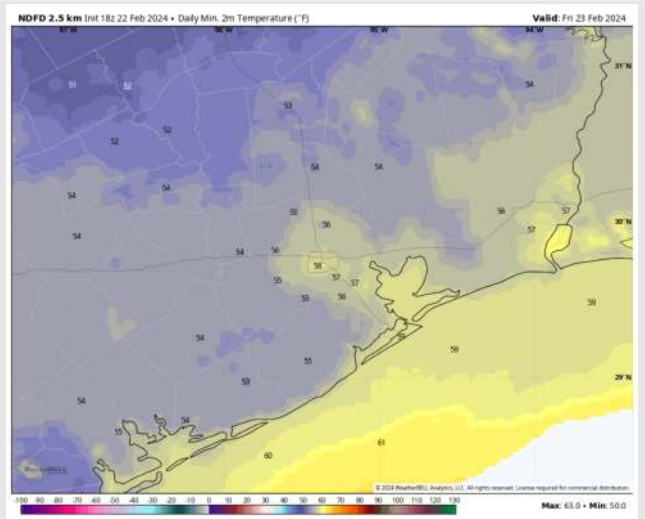
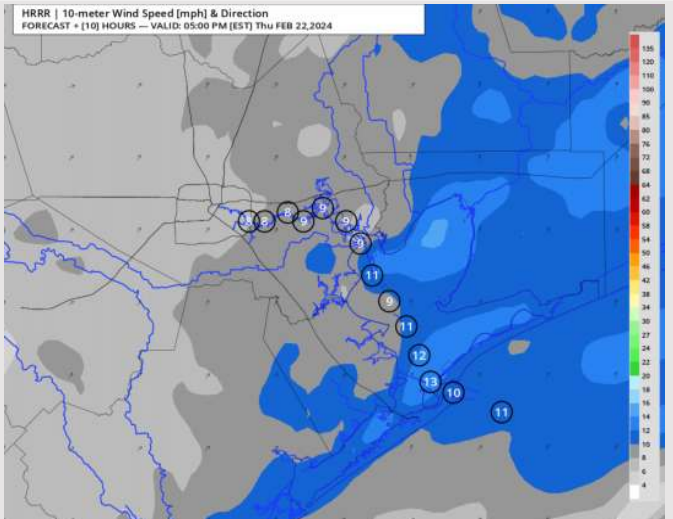
**Low Temps:** **N of Morgan's Point:** Mid to Upper 50s F. **S of Morgan's Point:** Upper 50s F.

**Visibility:** Low end risk for fog along shoreline and Boarding Station. **Check out visibility slide for more info.**

## Precip Image: 9 PM CT



Wind Speed:  
4 PM CT



Low Temps  
Fri AM

## Forecast Discussion

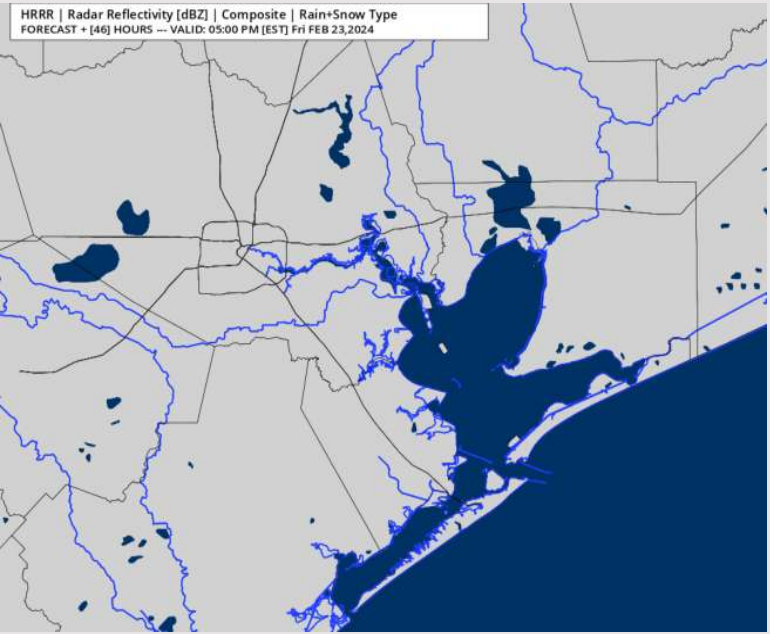
**Precip:** Favoring dry conditions for Friday.

**Wind:** Winds will calm, and slowly rotate clockwise from SW to N through 5AM, and remain out of the N for the rest of the day. **N Morgan's Point:** 7 – 12 kts throughout the day. **S of Morgan's Point:** Winds will sit at 14 – 18 kts through 11 AM before calming to 8 – 13 kts for the remainder of the day. A few gusts of up to 20kts can't be ruled out for all stations through 11AM.

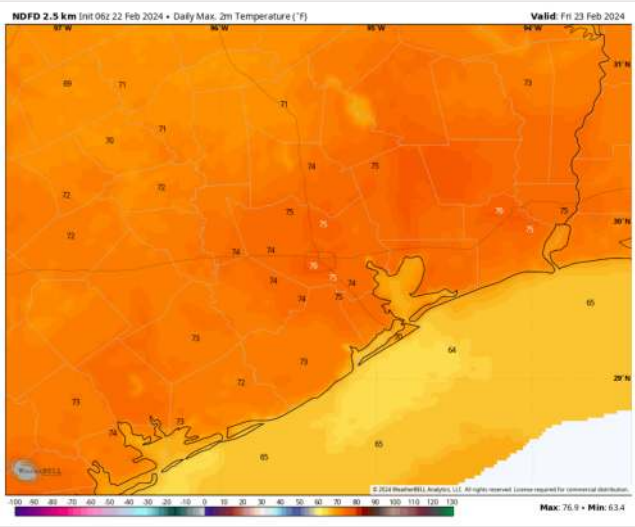
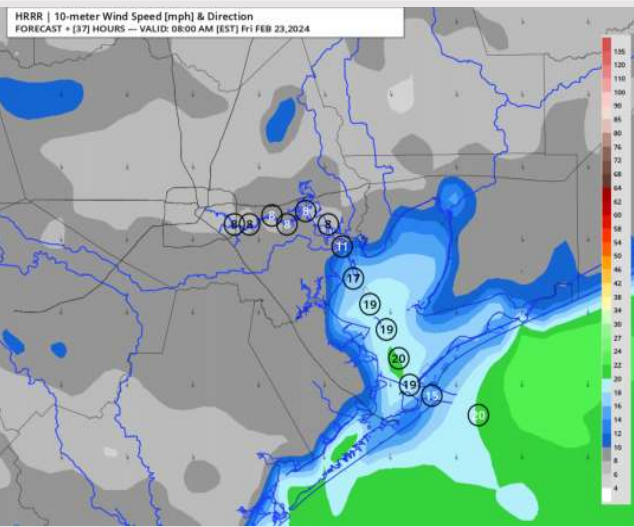
**High Temps:** **N of Morgan's Point:** Mid 70s F. **S of Morgan's Point:** Mid 60s F.

**Visibility:** Patchy fog cannot be ruled out through the early AM Friday. **Check out visibility slide for more info.**

## Precip Image: 4 PM CT



Wind Speed:  
7 AM CT



High Temps  
Friday



# Houston Pilots: sat. 2/24/2024



## Forecast Discussion

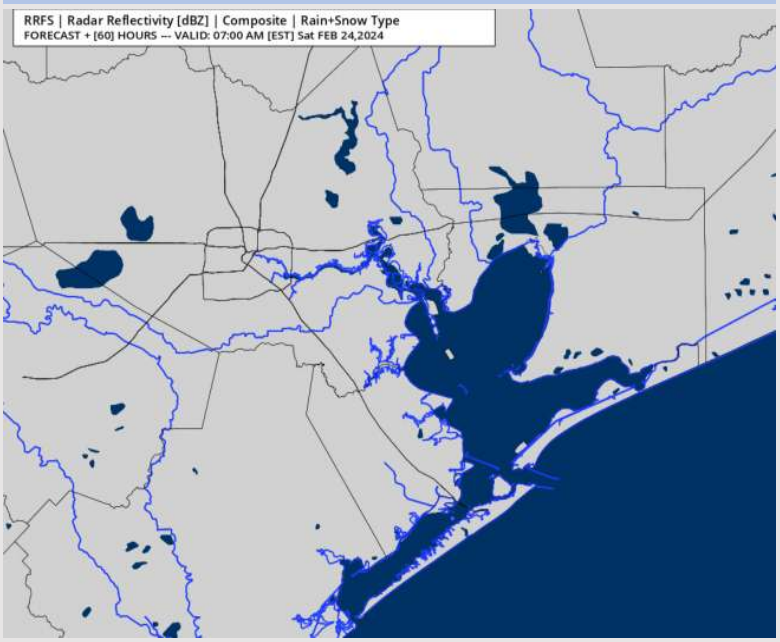
**Precip:** Favoring dry conditions for Saturday.

**Wind:** Winds out of the N/NW through 7AM before becoming variable as a weak front works through. Winds re-establish out of the South by 6PM. **N Morgan's Point:** Winds at 3 – 6 kts for the entire day. **S of Morgan's Point:** Winds at 3 – 6 kts through 6PM before becoming 4 - 8 kts.

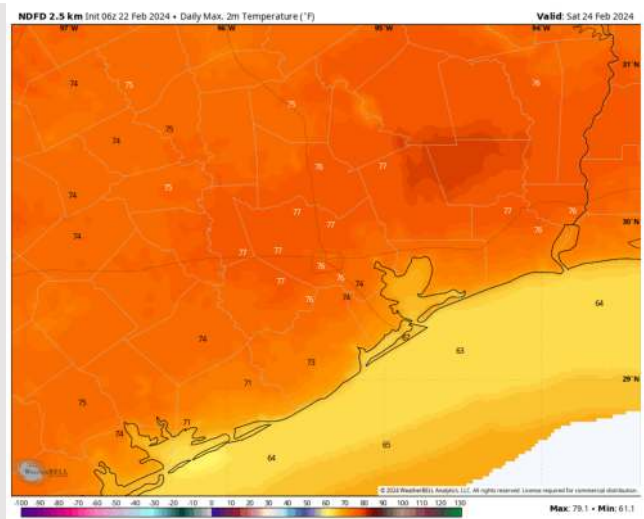
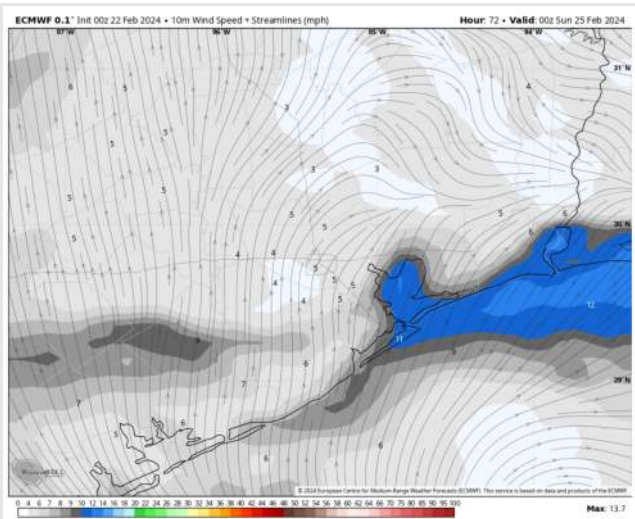
**High Temps:** **N of Morgan's Point:** Mid 70s F. **S of Morgan's Point:** Low 60s F.

**Visibility:** No fog risks favored for Saturday.

## Precip Image: 6 AM CT



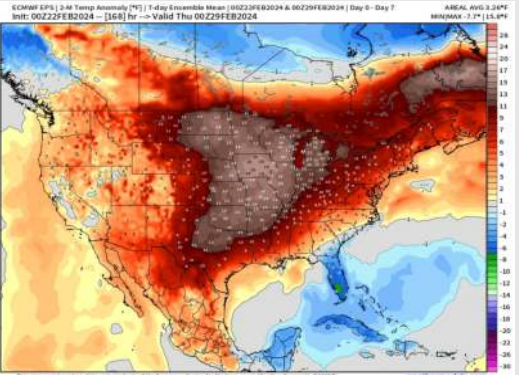
Wind Speed:  
6 PM CT



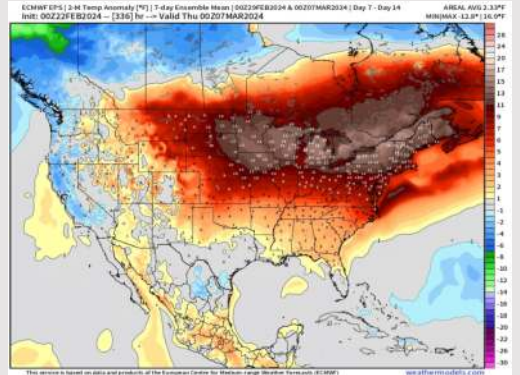
High Temps  
Saturday

# Houston Pilots: 2/22/24

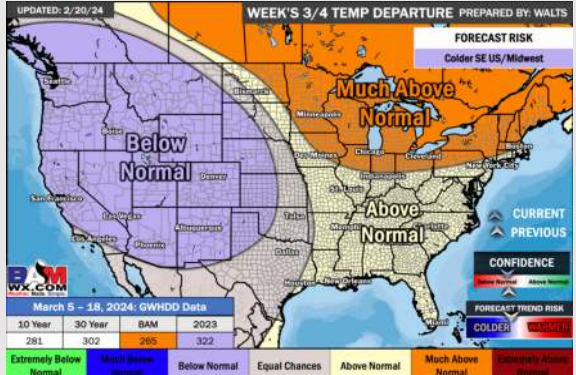
**Next 7 Day Temperature Departure**



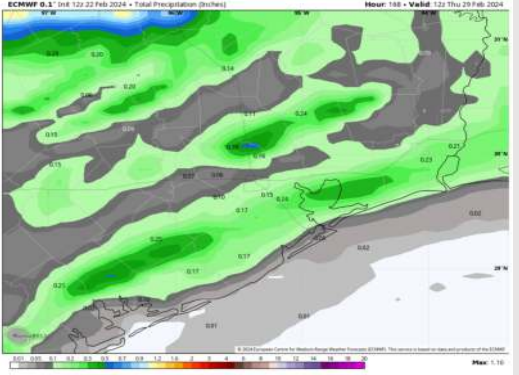
**8-14 Day Temperature Departure**



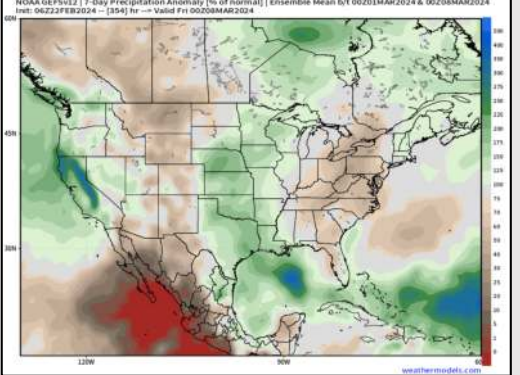
**15-30 Day Temperature Departure**



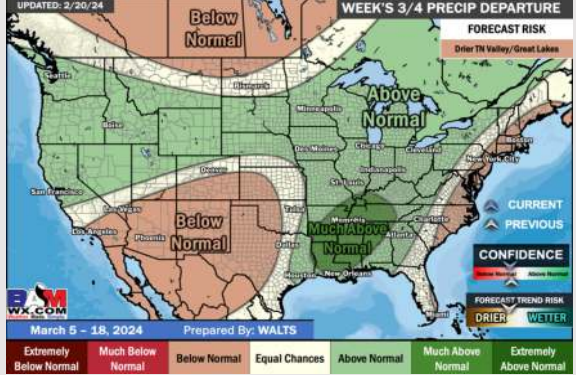
**Next 7 Day Total Precipitation**



**8-14 Day % of Average Precip.**



**15-30 Day % of Average Precip.**



- The next best chance of rain is favored to move in early next week. Above normal temperatures favored for the week ahead.
- Slightly above normal precipitation chances are at play during the week 2 timeframe. Temps expected to be above normal.
- Seasonable to slightly above normal temperatures and above normal chances for precipitation are favored in the weeks ¾ timeframe.