

Houston Pilots Forecast Package



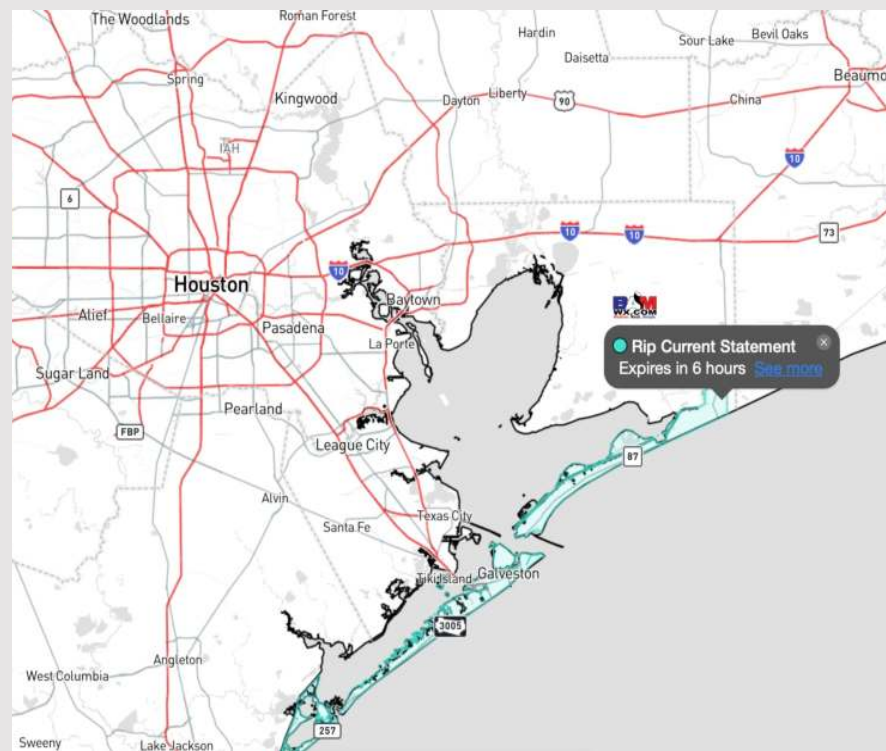
Updated: 1:35 PM CT

Thursday, February 22, 2024

Forecaster: Alyssa Elliott

Weather Headlines

- Favoring dry conditions through the end of the week / into the weekend.
- Winds will remain slightly elevated through Friday. Wave heights may reach 3 – 4 ft at the Boarding Station this PM.
- Low end visibility risk for stations 25/26 through the Boarding Station through early Fri AM.



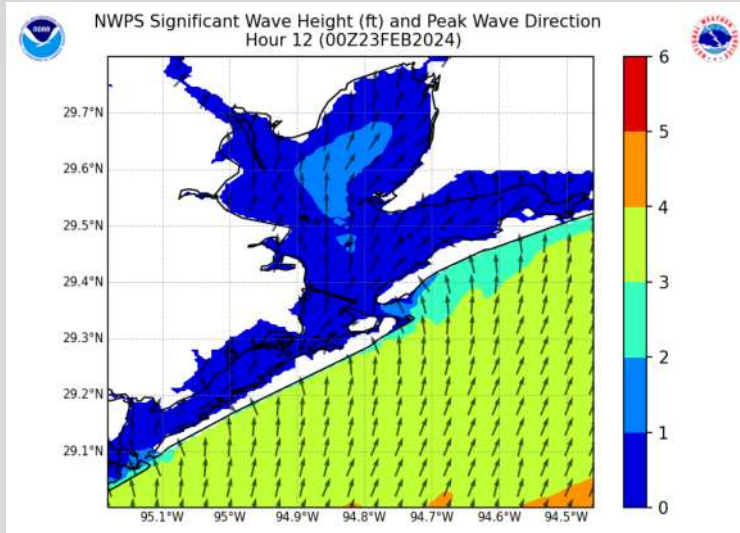
Radar/NWS Alerts: 1:15 PM CT



As always, please do not hesitate to reach out to us with any forecast questions via the chat option on Clarity or our on-call number, **(317)-560-8122** press 1 for forecast questions.

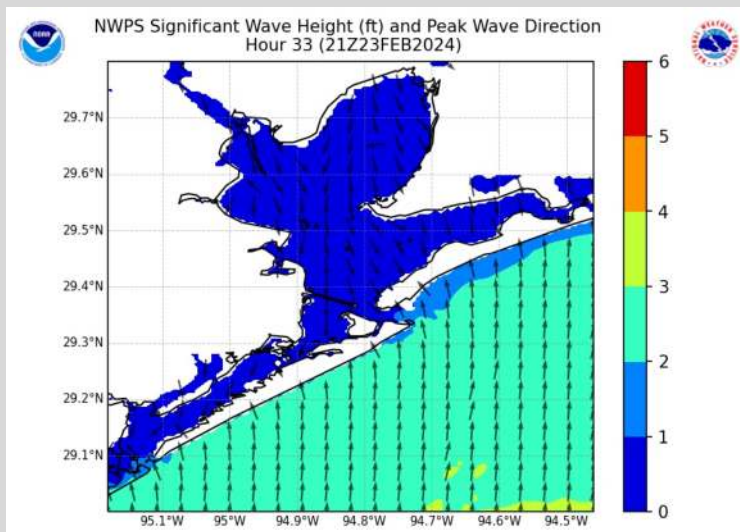
Houston Pilots Wave Height Update

Significant Wave Height Image



6 PM CT THU

Wave heights are slightly elevated to 2 – 3 ft at stations 11/12 and 3 – 4 ft at the Boarding Station this afternoon as winds continue out of the S/SW.



3 PM CT FRI

Waves at the Boarding Station will decrease to 2 – 3 ft at the Boarding Station by 12 AM CT Friday. Waves will not decrease to 1 – 2 ft for 11/12 through the Boarding Station until ~9 PM CT Friday.

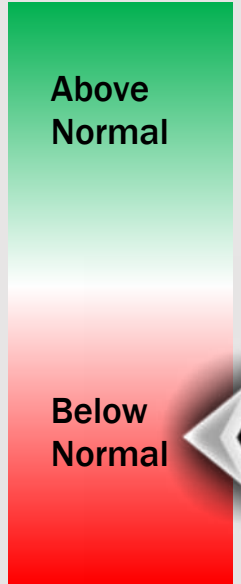
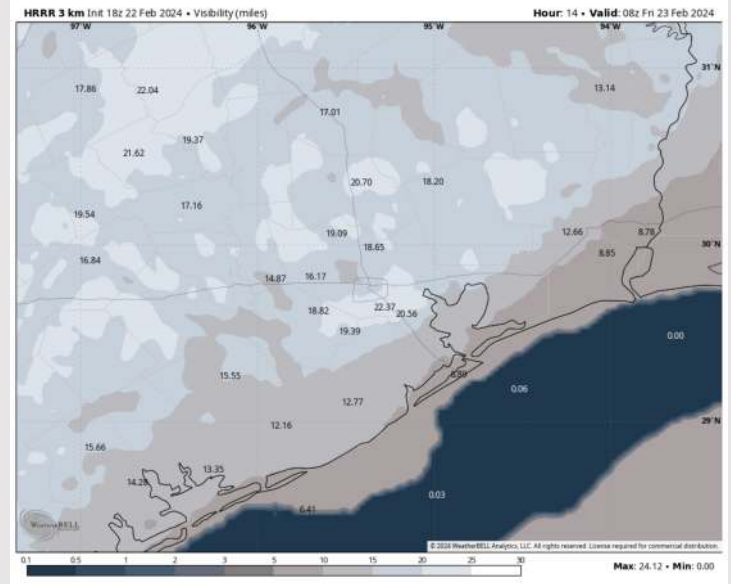
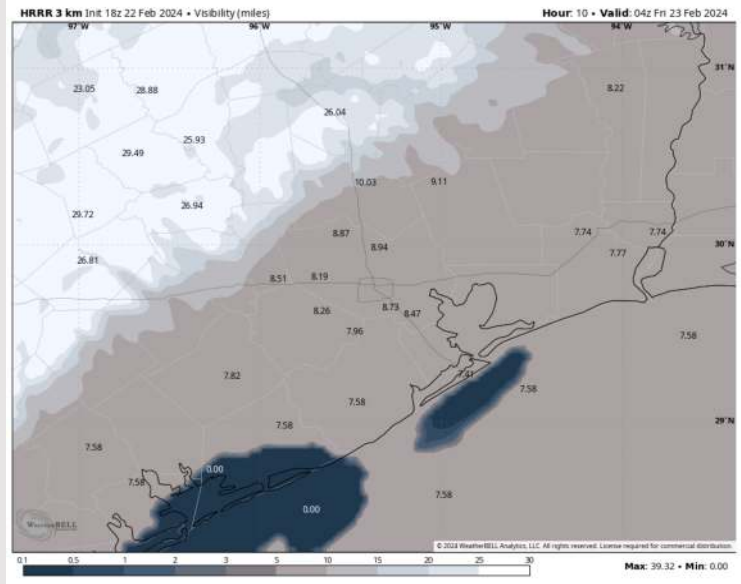
Houston Pilots Visibility Report



10 PM CT THU VISIBILITY

2 AM CT FRI VISIBILITY

Confidence



TIMEFRAME DISCUSSED	THREAT
10 PM THU – 3 AM FRI	Low

- Anticipating a low end risk for reduced visibility / patchy fog at Station 25/26 through the Boarding Station between 10 PM tonight and 3 AM CT tomorrow out ahead of a weak front. Visibility may reduce to 1 – 3 miles with the greatest risk occurring over the Boarding Station.
- Confidence remains low, however winds out of the SW would be favorable for this temporary fog development before winds shift out of the NW early Friday morning.
- Fog is expected to remain primarily over the Gulf with the risk just clipping the shoreline before winds shift and push fog E. off of the coast right around 3 AM Friday, clearing up any visibility concerns.

Houston Pilots Extended Range Visibility Report



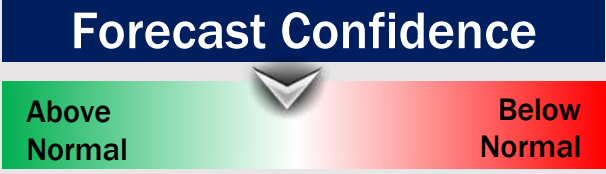
Sunday 2/25/24

Not favoring visibility concerns at this time for SUN.



Monday 2/26/24

Not favoring visibility concerns on MON.



Tuesday 2/27/24

As a front approaches from the northwest, will need to monitor for low end potential for patchy fog either Tuesday AM or late Tuesday PM. Confidence remains below normal.



Chance for Fog

Sunday AM	Unlikely
Sunday PM	Unlikely
Monday AM	Unlikely
Monday PM	Unlikely
Tuesday AM	Possible
Tuesday PM	Possible

Houston Pilots Visibility Chart (miles)



Forecast Confidence



Time	Thu 1pm	Thu 2pm	Thu 3pm	Thu 4pm	Thu 5pm	Thu 6pm	Thu 7pm	Thu 8pm	Thu 9pm	Thu 10pm	Thu 11pm	Fri 12am	Fri 1am	Fri 2am	Fri 3am	Fri 4am	Fri 5am	Fri 6am	Fri 7am	Fri 8am	Fri 9am	Fri 10am	Fri 11am	Fri 12pm
610 Bridge	10	10	10	10	10	10	10	10	10	10	10	10	10	10	10	10	10	10	10	10	10	10	10	10
Kinder 1	10	10	10	10	10	10	10	10	10	10	10	10	10	10	10	10	10	10	10	10	10	10	10	10
Greens Bayou	10	10	10	10	10	10	10	10	10	10	10	10	10	10	10	10	10	10	10	10	10	10	10	10
Shell Crude	10	10	10	10	10	10	10	10	10	10	10	10	10	10	10	10	10	10	10	10	10	10	10	10
Lynchburg Ferries	10	10	10	10	10	10	10	10	10	10	10	10	10	10	10	10	10	10	10	10	10	10	10	10
Exxon 3	10	10	10	10	10	10	10	10	10	10	10	10	10	10	10	10	10	10	10	10	10	10	10	10
Morgans Point	10	10	10	10	10	10	10	10	10	10	10	10	10	10	10	10	10	10	10	10	10	10	10	10
75/76	10	10	10	10	10	10	10	10	5	10	7	6	9	10	10	10	10	10	10	10	10	10	10	10
63/64	10	10	10	10	10	10	10	10	5	10	7	6	9	10	10	10	10	10	10	10	10	10	10	10
51/52	10	10	10	10	10	10	10	10	9	9	7	6	6	9	7	10	10	10	10	10	10	10	10	10
37/38	10	10	10	10	10	10	10	10	3	5	3	2	6	9	6	10	10	10	10	10	10	10	10	10
25/26	10	10	10	10	10	10	10	10	3	5	3	2	6	9	6	10	10	10	10	10	10	10	10	10
11/12	10	10	10	10	10	10	10	10	3	4	3	2	5	6	5	10	10	10	10	10	10	10	10	10
1 & 2 Bravo	10	7	7	10	6	10	10	10	3	2	0.5	0.3	0.3	0.8	0.5	10	10	10	10	10	10	10	10	10

NOTE: This is automated data that may/may not agree with the official BAM thinking that's found on the daily slides or special visibility report slides. This data should be used as a guide only

Houston Pilots Wind Chart



Forecast Confidence



Example

Sustained wind 13 Knots
Gusts 18 Knots
Wind from the N

WS: 13
G:18
N

Time Knots	Thu 1pm	Thu 2pm	Thu 3pm	Thu 4pm	Thu 5pm	Thu 6pm	Thu 7pm	Thu 8pm	Thu 9pm	Thu 10pm	Thu 11pm	Fri 12am	Fri 1am	Fri 2am	Fri 3am	Fri 4am	Fri 5am	Fri 6am	Fri 7am	Fri 8am	Fri 9am	Fri 10am	Fri 11am	Fri 12pm
610 Bridge	13	11	9	9	8	6	5	5	5	5	5	5	5	7	8	9	9	9	9	9	11	11	11	11
	25	21	19	17	13	12	11	10	11	11	10	10	12	13	16	18	19	18	20	20	21	21	21	21
	SW	SW	SW	SW	SSW	SSW	SSW	SSW	SSW	SW	W	W	WNW	NW	NNW	NNW	NNW	NNW	N	N	N	N	N	N
Kinder 1	12	11	9	9	8	6	5	5	5	5	5	5	5	7	8	9	9	9	9	9	11	10	10	11
	24	21	19	16	13	12	11	10	11	11	10	11	11	13	16	17	19	18	19	19	21	21	21	21
	SW	SW	SW	SW	SSW	SSW	SSW	SSW	SSW	SW	W	W	WNW	NW	NNW	NNW	NNW	NNW	N	N	N	N	N	N
Greens Bayou	11	10	9	9	8	6	5	5	5	5	5	5	5	7	8	9	9	9	9	9	11	10	10	11
	23	21	19	16	14	12	11	10	11	11	10	10	11	13	15	16	17	18	18	19	21	21	21	21
	SW	SW	SW	SW	SSW	SSW	SSW	SSW	SSW	SW	W	W	WNW	NW	NNW	NNW	NNW	NNW	N	N	N	N	N	N
Shell Crude	11	10	9	9	8	6	5	5	5	5	5	5	5	6	7	8	8	9	9	9	11	10	10	10
	22	21	19	17	14	13	11	10	11	11	10	10	11	13	14	15	16	17	18	19	21	21	21	21
	SW	SW	SSW	SW	SSW	SSW	SSW	SSW	SSW	SW	W	W	WNW	NW	NNW	NNW	NNW	NNW	NNW	N	N	N	N	N
Lynchburg Ferries	11	10	9	9	7	6	5	5	5	5	5	5	5	6	7	8	8	9	9	9	11	10	11	11
	21	20	19	16	13	12	11	10	11	10	10	10	11	13	14	16	16	18	18	18	21	21	20	21
	SW	SW	SSW	SSW	SSW	SSW	SSW	SSW	SSW	SW	W	W	WNW	NW	NNW	NNW	NNW	NNW	NNW	N	N	N	N	N
Exxon 3	11	10	10	10	9	8	8	8	8	7	6	6	7	7	8	9	10	11	11	11	12	12	11	11
	21	20	20	17	14	13	12	12	12	11	11	11	12	13	14	16	17	18	18	19	21	21	20	20
	SSW	SW	SSW	SSW	SSW	SSW	SSW	SSW	SSW	SW	W	W	WNW	NW	NNW	NNW	NNW	NNW	NNW	N	N	N	N	N
Morgans Point	10	9	10	9	9	8	8	8	7	7	5	6	6	7	8	9	9	10	11	11	11	11	11	11
	21	20	18	17	14	13	12	12	11	11	10	11	12	13	15	16	17	18	19	20	21	21	20	20
	SSW	SSW	SSW	SSW	SSW	SSW	SSW	SSW	SW	SW	W	W	WNW	NW	NNW	NNW	NNW	NNW	NNW	N	N	N	N	N
75/76	11	11	11	13	13	13	12	11	10	9	9	9	9	9	11	12	14	15	15	15	15	13	12	11
	20	20	19	20	19	18	17	16	15	13	13	13	13	14	15	18	21	22	22	21	22	21	21	21
	SSW	SSW	SSW	SSW	SSW	SSW	SSW	SSW	SW	WSW	W	W	WNW	NW	NW	NNW	NNW	NNW	NNW	N	N	N	N	N
63/64	11	11	11	13	13	12	12	11	9	9	9	8	9	9	10	12	13	15	15	14	14	12	11	10
	19	19	19	18	19	17	17	15	14	13	13	12	13	13	15	17	20	21	21	21	22	21	20	19
	SSW	SSW	SSW	SSW	SSW	SSW	SSW	SSW	SSW	SW	WSW	W	W	WNW	NW	NNW	NNW	NNW	NNW	N	N	N	N	N
51/52	11	11	11	12	12	12	11	10	9	9	8	8	9	8	10	11	13	14	14	14	14	12	11	10
	20	18	17	17	18	17	16	14	13	13	12	12	13	12	14	15	18	21	21	21	21	20	20	18
	SSW	SSW	SSW	SSW	SSW	SSW	SSW	SSW	SSW	SW	WSW	W	W	WNW	NW	NNW	NNW	NNW	NNW	N	N	N	N	N
37/38	11	11	11	12	12	12	11	9	9	9	8	7	8	8	9	11	12	13	14	15	14	13	11	10
	18	17	18	17	17	17	16	14	13	13	12	11	12	12	14	15	18	19	21	21	23	21	19	18
	SSW	SSW	SSW	SSW	SSW	SSW	SSW	SSW	SW	SW	WSW	W	W	WNW	NW	NNW	NNW	NNW	NNW	N	N	N	N	N
25/26	11	11	11	12	11	10	9	8	8	8	8	7	8	8	9	10	11	13	13	14	13	12	11	11
	19	17	16	17	17	16	14	14	13	12	12	10	12	12	13	14	16	18	19	21	22	21	19	17
	SSW	SSW	SSW	SSW	SSW	SSW	SSW	SSW	SW	SW	WSW	W	W	WNW	NW	NNW	NNW	NNW	NNW	N	N	N	N	N
11/12	11	10	10	11	10	9	8	8	7	7	6	6	7	7	9	10	11	11	11	12	13	12	12	11
	17	16	15	15	14	13	12	12	11	11	10	10	11	11	13	14	15	16	19	20	21	20	18	17
	SSW	SSW	SSW	SSW	SSW	SSW	SSW	SSW	SW	SW	WSW	W	W	WNW	NW	NNW	NNW	NNW	NNW	N	N	N	N	N
1 & 2 Bravo	10	9	9	11	11	11	11	10	11	10	10	9	9	9	11	11	13	13	14	14	14	13	11	10
	16	15	14	15	16	16	15	15	15	15	15	13	13	14	15	16	19	19	21	21	23	20	17	15
	SSW	SSW	SSW	SSW	SSW	SSW	SSW	SSW	SSW	SW	SW	WSW	W	W	WNW	NW	NNW	NNW	NNW	N	N	N	N	N

NOTE: This is automated data that may/may not agree with the official BAM thinking that's found on the daily slides or special visibility report slides. This data should be used as a guide only

Forecast Discussion

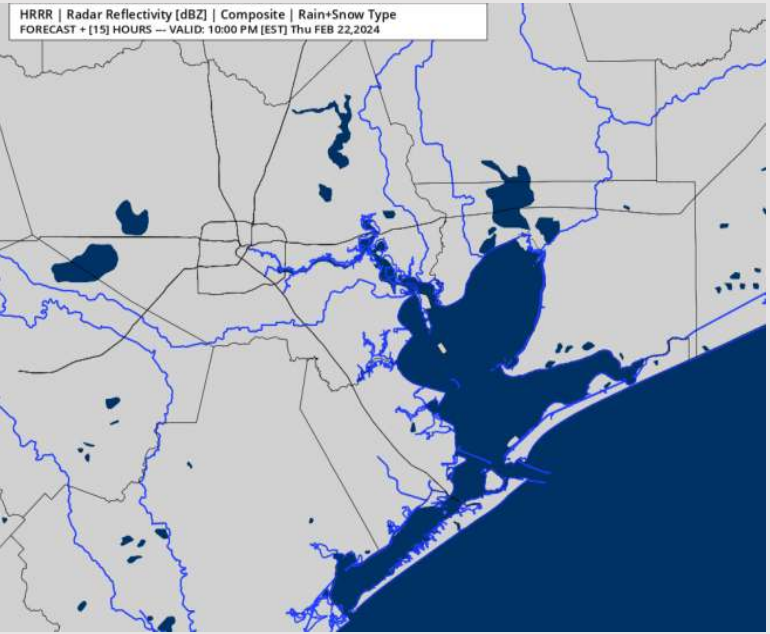
Precip: Favoring dry conditions for the rest of the day.

Wind: Winds will be out of the S/SW throughout this PM. **N of Morgan's Point:** Winds will be at 13 – 18 kts through 4 PM before decreasing to 5 - 10 kts the rest of the evening. **S of Morgan's Point:** Winds at 13 – 18 kts for the rest of the evening. **Wind gusts of 22 – 27 kts will be possible through 7 PM, then gusts of 20 kts will continue to be a risk through the rest of the evening.**

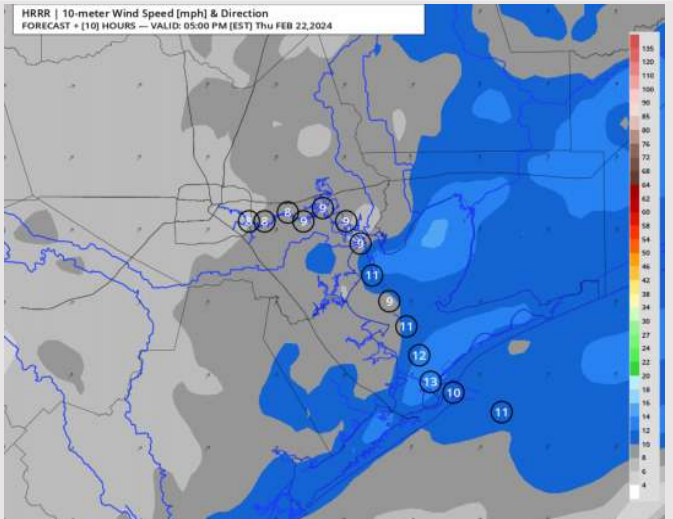
Low Temps: **N of Morgan's Point:** Mid to Upper 50s F. **S of Morgan's Point:** Upper 50s F.

Visibility: Low end risk for fog along shoreline and Boarding Station. **Check out visibility slide for more info.**

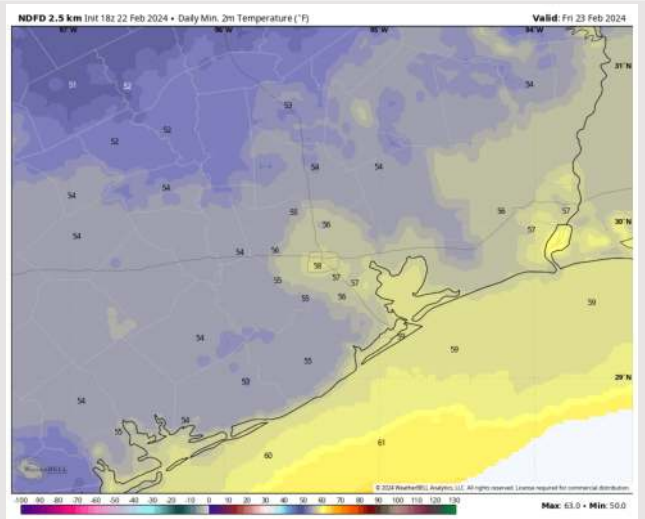
Precip Image: 9 PM CT



Wind Speed:
4 PM CT



Low Temps
Fri AM



Forecast Discussion

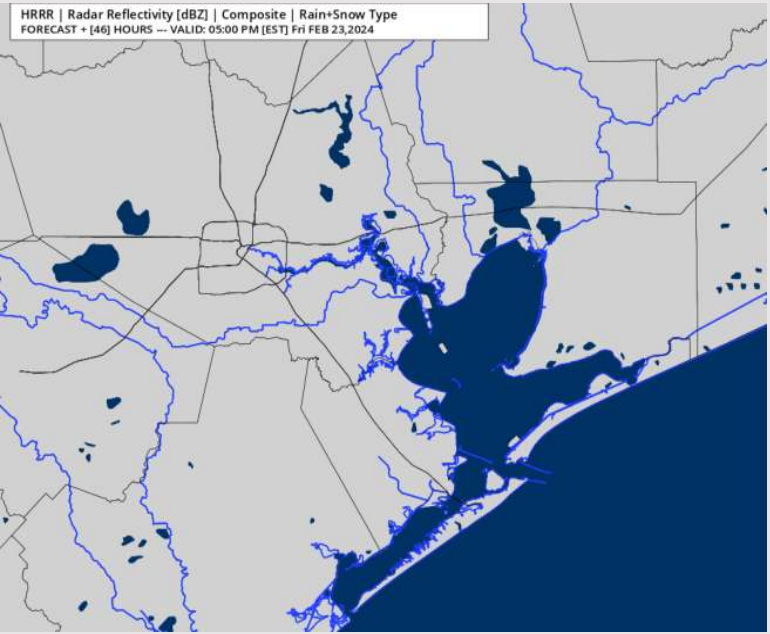
Precip: Favoring dry conditions for Friday.

Wind: Winds will calm, and slowly rotate clockwise from SW to N through 5AM, and remain out of the N for the rest of the day. **N Morgan's Point:** 7 – 12 kts throughout the day. **S of Morgan's Point:** Winds will sit at 14 – 18 kts through 11 AM before calming to 8 – 13 kts for the remainder of the day. A few gusts of up to 20kts can't be ruled out for all stations through 11AM.

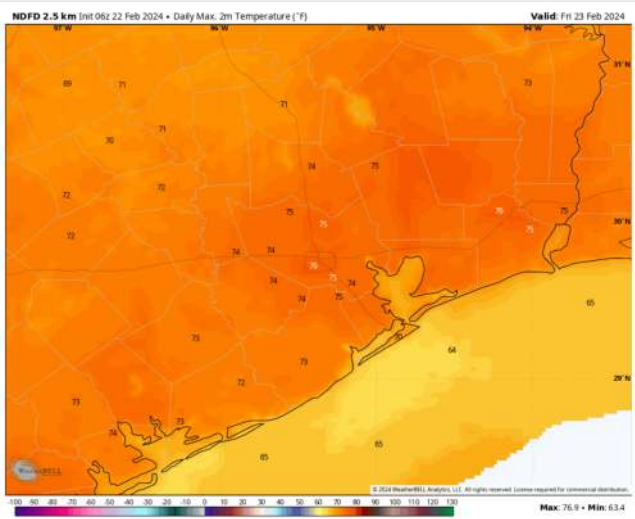
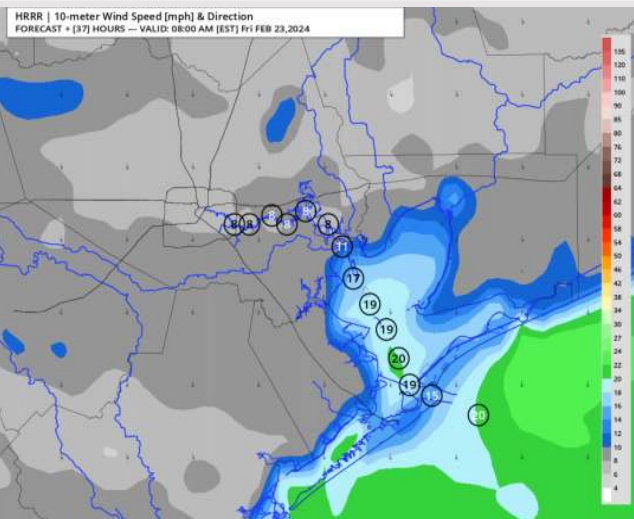
High Temps: **N of Morgan's Point:** Mid 70s F. **S of Morgan's Point:** Mid 60s F.

Visibility: Patchy fog cannot be ruled out through the early AM Friday. **Check out visibility slide for more info.**

Precip Image: 4 PM CT



Wind Speed:
7 AM CT

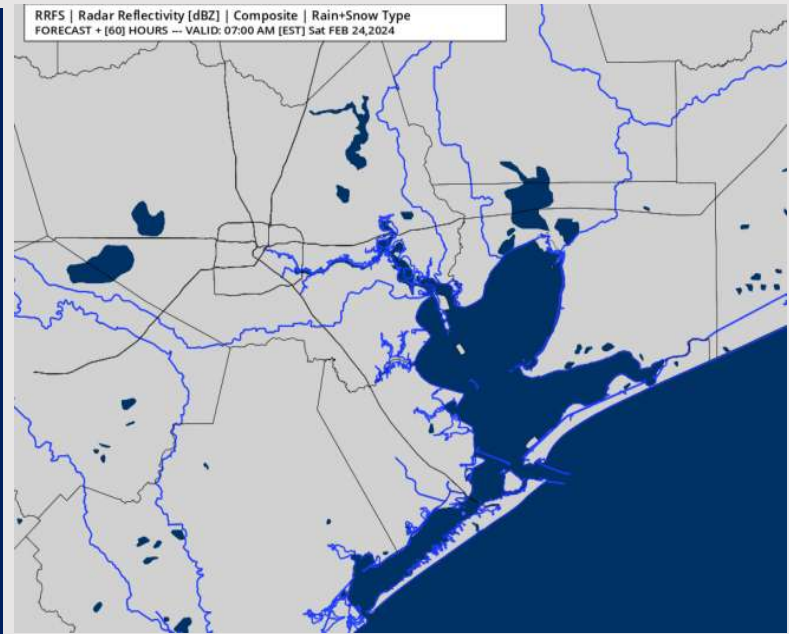


High Temps
Friday

Houston Pilots: sat. 2/24/2024

Forecast Discussion

Precip Image: 6 AM CT



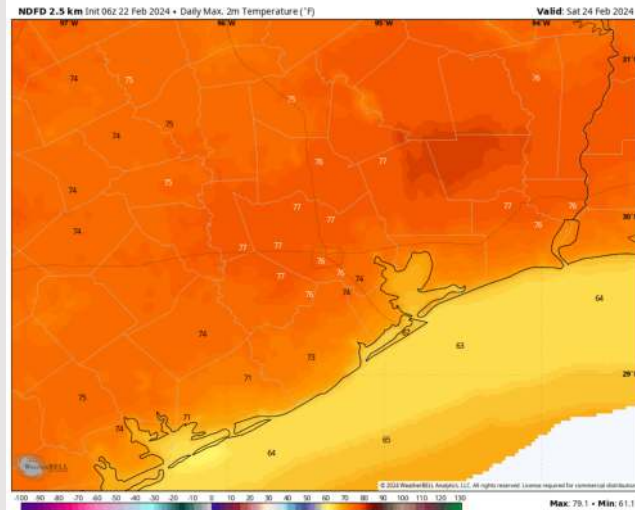
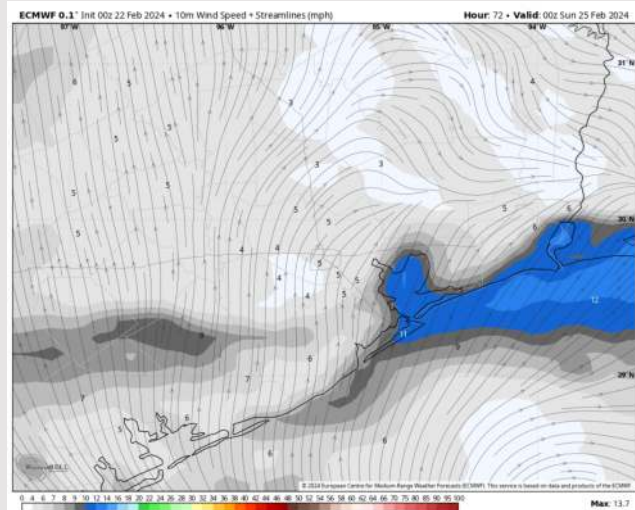
Precip: Favoring dry conditions for Saturday.

Wind: Winds out of the N/NW through 7AM before becoming variable as a weak front works through. Winds re-establish out of the South by 6PM. **N Morgan's Point:** Winds at 3 – 6 kts for the entire day. **S of Morgan's Point:** Winds at 3 – 6 kts through 6PM before becoming 4 - 8 kts.

High Temps: **N of Morgan's Point:** Mid 70s F. **S of Morgan's Point:** Low 60s F.

Visibility: No fog risks favored for Saturday.

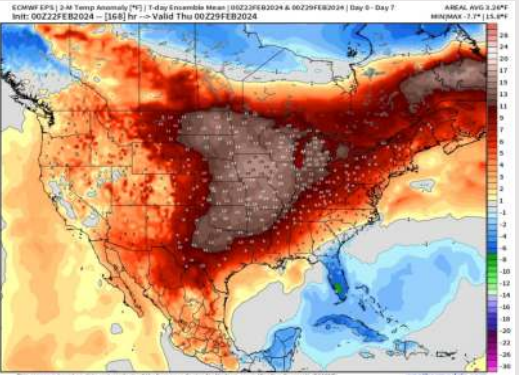
Wind Speed:
6 PM CT



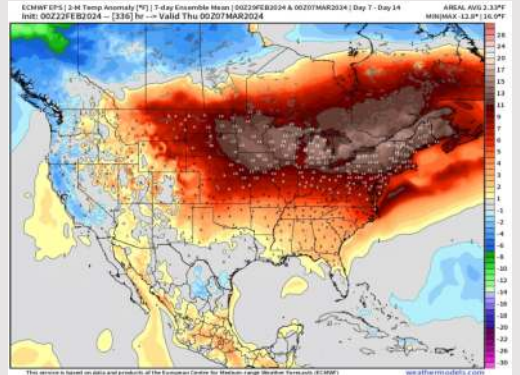
High Temps
Saturday

Houston Pilots: 2/22/24

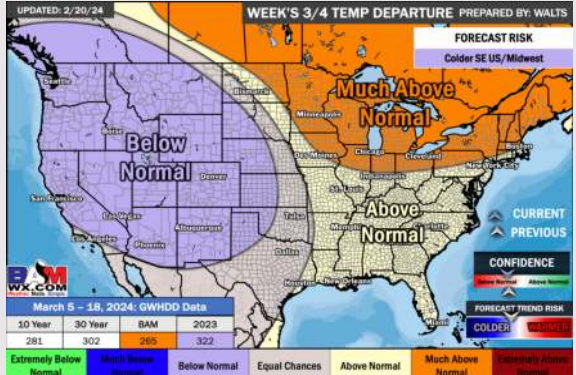
Next 7 Day Temperature Departure



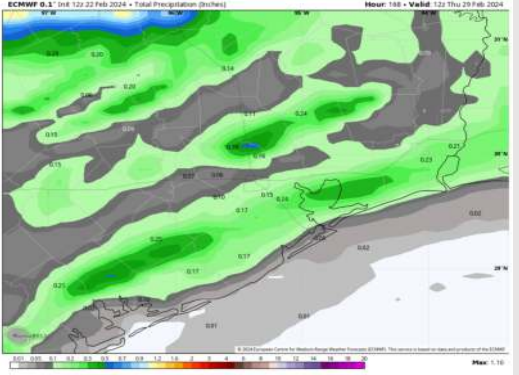
8-14 Day Temperature Departure



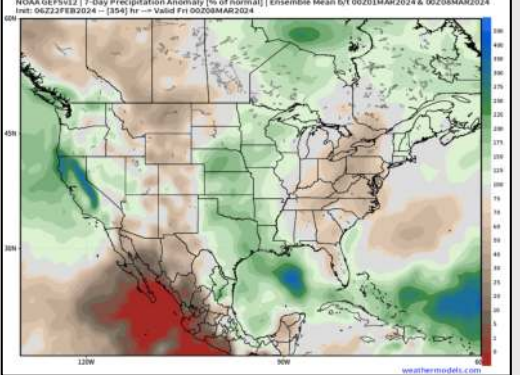
15-30 Day Temperature Departure



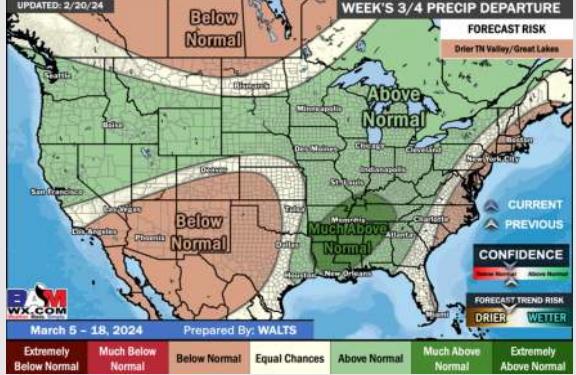
Next 7 Day Total Precipitation



8-14 Day % of Average Precip.



15-30 Day % of Average Precip.



- The next best chance of rain is favored to move in early next week. Above normal temperatures favored for the week ahead.
- Slightly above normal precipitation chances are at play during the week 2 timeframe. Temps expected to be above normal.
- Seasonable to slightly above normal temperatures and above normal chances for precipitation are favored in the weeks ¾ timeframe.