

Houston Pilots Forecast Package



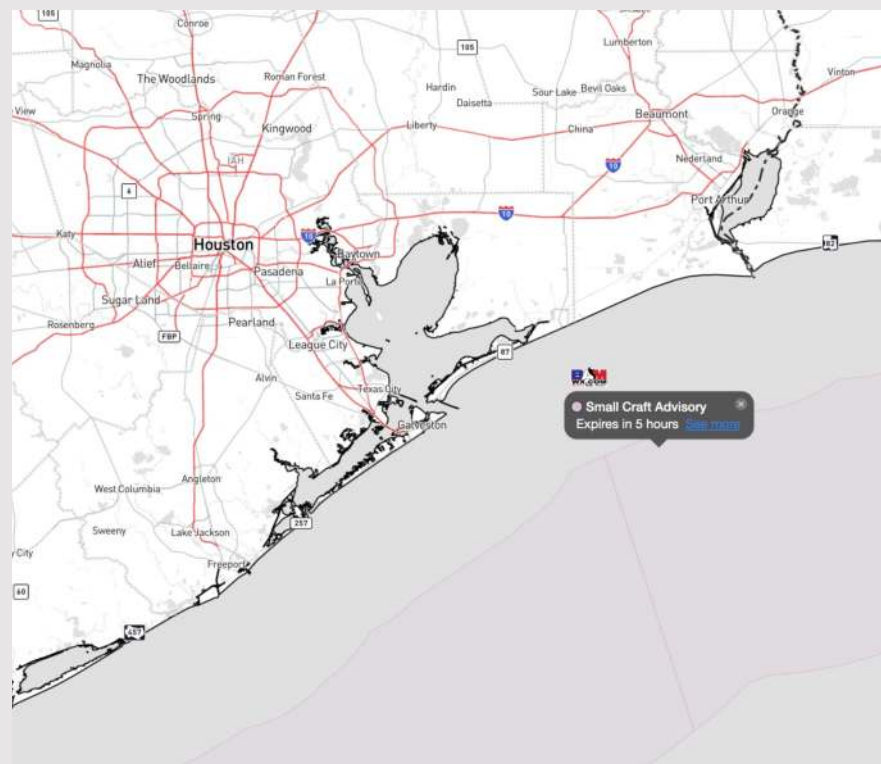
Updated: 1:15 AM CT

Thursday, February 22, 2024

Forecaster: John Kemper

Weather Headlines

- Favoring dry conditions through the end of the week / into the weekend.
- Winds will remain slightly elevated through Friday. No wave height concerns for stations.
- Not anticipating a fog risk the next several days.



Radar/NWS Alerts: 1:05 AM CT



As always, please do not hesitate to reach out to us with any forecast questions via the chat option on Clarity or our on-call number, **(317)-560-8122** press 1 for forecast questions.

Houston Pilots Extended Range Visibility Report



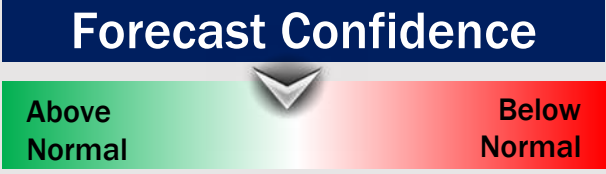
Sunday 2/25/24

Not favoring visibility concerns at this time for SUN.



Monday 2/26/24

Not favoring visibility concerns on MON.



Tuesday 2/27/24

As a front approaches from the northwest, will need to monitor for low end potential for patchy fog either Tuesday AM or late Tuesday PM. Confidence remains below normal.



Chance for Fog

Sunday AM	Unlikely
Sunday PM	Unlikely
Monday AM	Unlikely
Monday PM	Unlikely
Tuesday AM	Possible
Tuesday PM	Possible

Houston Pilots Visibility Chart (miles)



Forecast Confidence

Above Normal
Below Normal

Time	Thu 1am	Thu 2am	Thu 3am	Thu 4am	Thu 5am	Thu 6am	Thu 7am	Thu 8am	Thu 9am	Thu 10am	Thu 11am	Thu 12pm	Thu 1pm	Thu 2pm	Thu 3pm	Thu 4pm	Thu 5pm	Thu 6pm	Thu 7pm	Thu 8pm	Thu 9pm	Thu 10pm	Thu 11pm	Fri 12am
610 Bridge	10	10	10	10	10	10	10	10	10	10	10	10	10	10	10	10	10	10	10	10	10	10	10	9
Kinder 1	10	10	10	10	10	10	10	10	10	10	10	10	10	10	10	10	10	10	10	10	10	10	10	9
Greens Bayou	10	10	10	10	10	10	10	10	10	10	10	10	10	10	10	10	10	10	10	10	10	10	10	9
Shell Crude	10	10	10	10	10	10	10	10	10	10	10	10	10	10	10	10	10	10	10	10	10	10	10	7
Lynchburg Ferries	10	10	10	10	10	10	10	10	10	10	10	10	10	10	10	10	10	10	10	10	10	10	10	9
Exxon 3	10	10	10	10	10	10	10	10	10	10	10	10	10	10	10	10	10	10	10	10	10	10	10	7
Morgans Point	10	10	10	10	10	10	10	10	10	10	10	10	10	10	10	10	10	10	10	10	10	10	9	6
75/76	10	10	10	10	10	10	10	10	10	10	10	10	10	10	10	10	10	10	9	8	8	8	9	10
63/64	10	10	10	10	10	10	10	10	10	10	10	10	10	10	10	10	9	9	8	8	8	8	9	10
51/52	10	10	10	10	10	10	10	10	10	10	10	10	10	9	9	9	9	8	8	8	8	8	8	9
37/38	10	10	10	10	10	10	10	10	10	10	10	10	10	9	9	9	9	8	8	8	8	8	8	9
25/26	10	10	10	10	10	10	9	9	10	10	10	10	10	9	9	9	9	8	8	8	8	8	8	9
11/12	10	10	10	10	10	10	9	7	10	10	10	10	10	10	8	8	8	8	8	8	8	8	8	9
1 & 2 Bravo	10	10	10	10	10	10	9	9	10	10	10	10	9	9	8	8	8	8	8	8	8	8	8	8

NOTE: This is automated data that may/may not agree with the official BAM thinking that's found on the daily slides or special visibility report slides. This data should be used as a guide only

Houston Pilots Wind Chart



Forecast Confidence



Example

Sustained wind 13 Knots
 Gusts 18 Knots
 Wind from the N

WS: 13
 G:18
 N

Time Knots	Thu 1am	Thu 2am	Thu 3am	Thu 4am	Thu 5am	Thu 6am	Thu 7am	Thu 8am	Thu 9am	Thu 10am	Thu 11am	Thu 12pm	Thu 1pm	Thu 2pm	Thu 3pm	Thu 4pm	Thu 5pm	Thu 6pm	Thu 7pm	Thu 8pm	Thu 9pm	Thu 10pm	Thu 11pm	Fri 12am
610 Bridge	14	14	13	13	11	9	8	9	11	11	13	14	13	11	9	9	8	6	5	5	5	5	5	7
	28	28	27	26	22	19	17	19	21	22	26	29	27	21	20	17	14	12	11	10	10	10	11	13
	S	S	S	S	SSW	SSW	SSW	SSW	SSW	SSW	SW	SSW	SW	SW	SW	SW	SW	SSW	SSW	SSW	SSW	SSW	WSW	WNW
Kinder 1	13	14	13	13	11	9	8	9	11	11	13	14	13	11	9	9	8	6	5	5	5	5	5	7
	28	28	27	26	22	19	16	18	21	22	25	28	26	21	20	18	13	12	11	10	10	10	11	13
	S	S	S	S	SSW	SSW	SSW	SSW	SSW	SSW	SW	SW	SW	SW	SW	SW	SW	SSW	SSW	SSW	SSW	SSW	WSW	WNW
Greens Bayou	13	13	13	13	11	9	7	9	10	11	13	13	13	11	9	9	7	6	5	5	5	5	5	6
	27	27	26	25	22	18	15	18	21	22	25	27	25	21	20	17	13	12	10	10	10	10	11	13
	S	S	S	S	SSW	SSW	SSW	SSW	SSW	SSW	SW	SSW	SW	SW	SW	SW	SW	SSW	SSW	SSW	SSW	SSW	WSW	WNW
Shell Crude	13	13	13	12	11	9	7	9	11	11	12	13	13	11	9	9	7	6	5	5	5	5	5	7
	27	27	27	24	22	19	15	17	21	22	24	27	25	21	20	17	14	12	10	10	10	10	11	13
	S	S	S	S	SSW	SSW	SSW	SSW	SSW	SSW	SSW	SW	SW	SW	SW	SW	SW	SSW	SSW	SSW	SSW	SSW	WSW	W
Lynchburg Ferries	13	13	13	11	10	9	7	8	10	11	12	13	12	11	9	9	7	6	5	5	5	5	5	6
	25	25	26	23	21	18	14	16	21	22	23	26	24	21	19	17	13	12	10	9	10	10	10	13
	S	S	S	S	SSW	SSW	SSW	SSW	SSW	SSW	SSW	SSW	SW	SW	SW	SW	SW	SSW	SSW	SSW	SSW	SSW	WSW	W
Exxon 3	13	13	13	12	10	9	7	8	10	11	13	13	12	11	11	10	9	7	7	7	7	7	6	6
	25	26	25	24	21	18	15	16	19	21	23	25	24	22	21	19	15	13	12	11	11	11	11	12
	S	S	S	S	SSW	SSW	SSW	SSW	SSW	SSW	SSW	SSW	SSW	SW	SW	SW	SSW	SSW	SSW	SSW	SSW	SSW	WSW	W
Morgans Point	12	12	12	11	10	9	7	7	9	11	11	13	12	11	11	10	9	8	7	7	7	7	6	5
	22	24	24	23	21	17	14	15	17	20	21	25	24	22	21	18	15	13	11	11	11	11	11	11
	S	S	S	S	SSW	SSW	SSW	S	S	SSW	SSW	SSW	SSW	SSW	SSW	SW	SSW	SSW	SSW	SSW	SSW	SSW	WSW	W
75/76	13	14	13	13	13	9	7	9	11	11	13	13	13	12	13	13	13	13	13	11	10	9	9	9
	21	22	21	21	20	15	13	13	16	18	21	23	23	22	22	21	19	19	18	16	14	14	13	13
	S	S	S	S	S	SSW	SSW	S	S	SSW	SSW	SSW	SSW	SSW	SSW	SSW	SSW	SSW	SSW	SSW	SSW	SSW	WSW	W
63/64	13	13	13	12	11	9	7	8	10	11	12	13	13	13	13	13	13	13	12	11	9	9	9	9
	20	21	21	21	19	15	13	13	16	18	20	21	22	22	21	21	19	19	17	16	13	13	13	13
	S	S	S	S	S	SSW	SSW	S	S	SSW	SSW	SSW	SSW	SSW	SSW	SSW	SSW	SSW	SSW	SSW	SSW	SSW	WSW	W
51/52	11	11	12	11	11	9	7	7	9	11	11	13	13	13	13	13	13	13	11	10	9	9	8	
	19	19	21	19	18	14	12	12	14	18	20	21	22	21	21	19	19	18	16	14	13	13	13	12
	S	S	S	S	SSW	SSW	SSW	SSW	S	SSW	SSW	SSW	SSW	SSW	SSW	SSW	SSW	SSW	SSW	SSW	SSW	SSW	WSW	W
37/38	11	11	11	11	11	9	7	7	9	11	11	13	13	13	13	13	13	13	11	10	9	9	8	
	19	19	21	19	19	15	13	13	14	18	20	21	24	22	21	20	19	18	16	15	13	13	13	12
	S	S	S	SSW	SSW	SSW	SSW	S	SSW	SSW	SSW	SSW	SSW	SSW	SSW	SSW	SSW	SSW	SSW	SSW	SSW	SSW	WSW	W
25/26	11	10	11	11	11	9	7	7	9	11	12	14	14	14	13	13	13	12	11	10	9	9	8	
	19	18	20	19	20	16	14	13	15	19	21	23	23	23	21	21	19	18	16	14	13	13	13	12
	S	S	S	SSW	SSW	SSW	SSW	SSW	S	SSW	SSW	SSW	SSW	SSW	SSW	SSW	SSW	SSW	SSW	SSW	SSW	SSW	WSW	W
11/12	9	9	9	9	9	8	7	7	8	11	11	13	13	13	12	12	11	10	9	9	8	7	7	7
	18	18	20	19	18	15	14	13	14	18	19	21	21	21	21	20	18	15	13	13	12	12	11	11
	S	S	SSW	SSW	SSW	SSW	SSW	SSW	SSW	SSW	SSW	SSW	SSW	SSW	SSW	SSW	SSW	SSW	SSW	SSW	SSW	SSW	WSW	W
1 & 2 Bravo	12	11	12	12	12	10	9	8	9	11	11	12	12	12	11	13	12	11	12	11	11	11	11	9
	21	21	21	21	20	16	16	14	15	17	18	20	21	21	19	21	19	18	17	16	16	15	15	14
	S	S	S	SSW	SSW	SSW	SSW	SSW	SSW	S	SSW	SSW	SSW	SSW	SSW	SSW	SSW	SSW	SSW	SSW	SSW	SSW	WSW	W

NOTE: This is automated data that may/may not agree with the official BAM thinking that's found on the daily slides or special visibility report slides. This data should be used as a guide only

Forecast Discussion

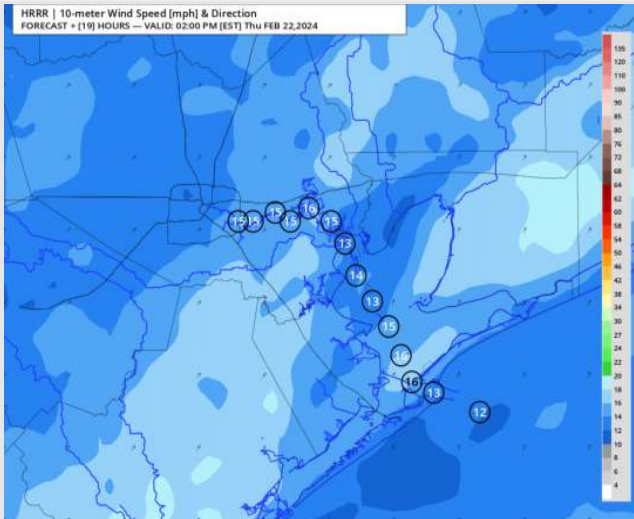
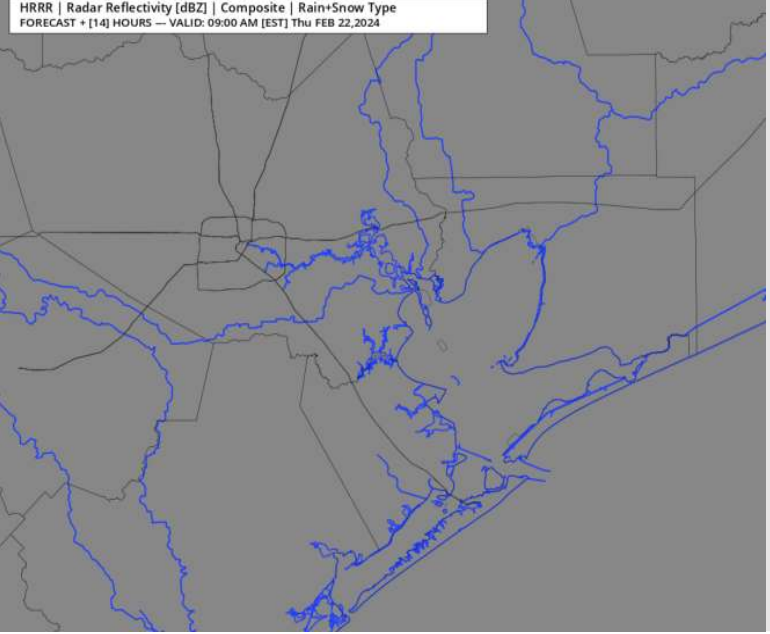
Precip: Favoring dry conditions for today.

Wind: Winds will be out of the S/SW throughout THU. **N of Morgan's Point:** Winds will be at 9-14 kts through 6 PM before a decrease to 6-11 kts the rest of the evening. **S of Morgan's Point:** Winds at 15-20 kts through 4 AM before a decrease to 12-17 kts the rest of the day. **Wind gusts of 22-27 kts will be possible through 1 PM.**

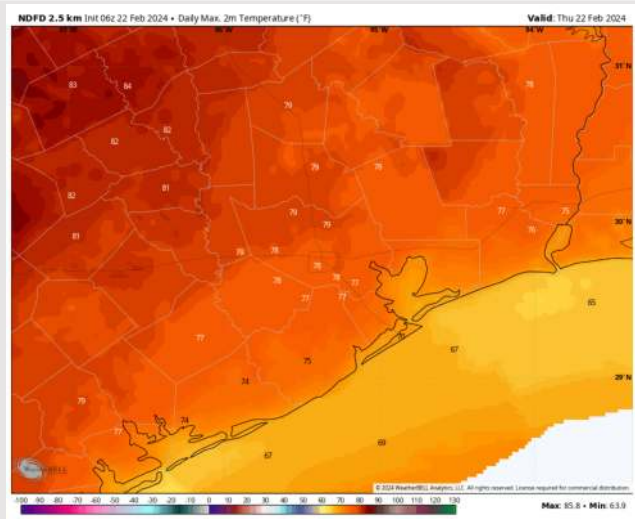
High Temps: **N of Morgan's Point:** Upper 70s F. **S of Morgan's Point:** Mid to Upper 60s F.

Visibility: Not anticipating visibility concerns for today / tonight.

Precip Image: 8 AM CT



Wind Speed:
1 PM CT



High Temps
Thursday

Forecast Discussion

Precip: Favoring dry conditions for Friday.

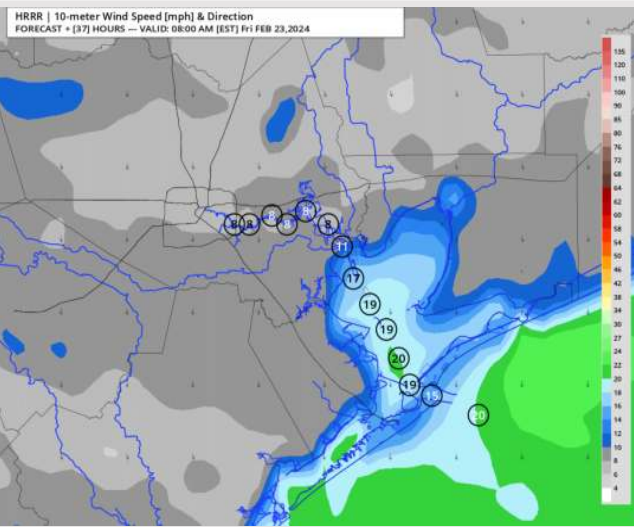
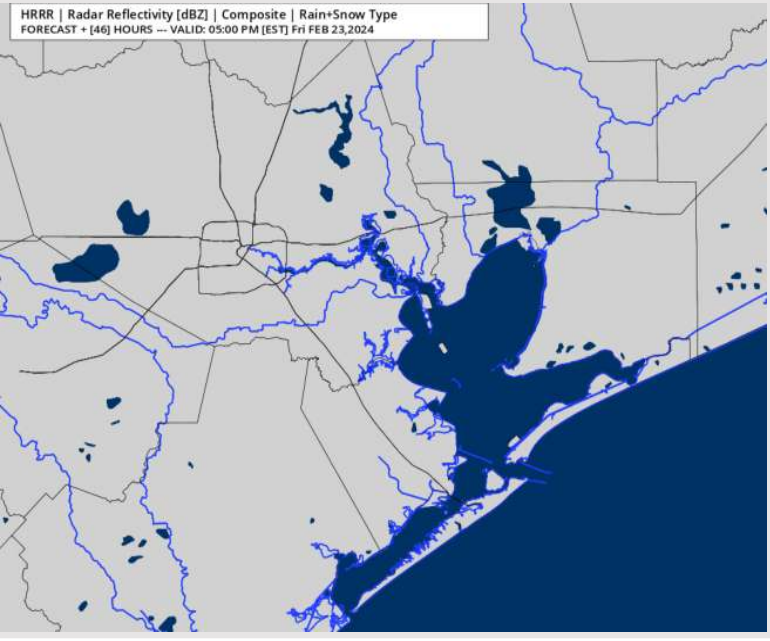
Wind: Winds will calm, and slowly rotate clockwise from SW to N through 5AM, and remain out of the N for the rest of the day.

N Morgan's Point: 7 – 12 kts throughout the day. **S of Morgan's Point:** Winds will sit at 14 – 18 kts through 11 AM before calming to 8 – 13 kts for the remainder of the day. A few gusts of up to 20kts can't be ruled out for all stations through 11AM.

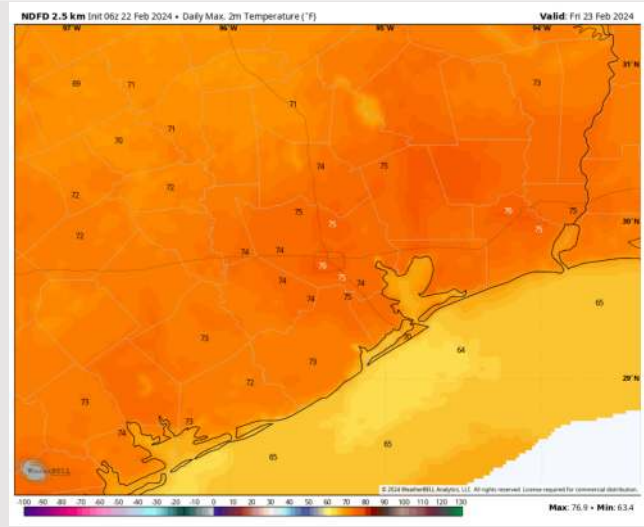
High Temps: **N of Morgan's Point:** Mid 70s F. **S of Morgan's Point:** Mid 60s F.

Visibility: Not anticipating a fog risk for Friday.

Precip Image: 4 PM CT



Wind Speed:
7 AM CT



High Temps
Friday

Houston Pilots: sat. 2/24/2024



Forecast Discussion

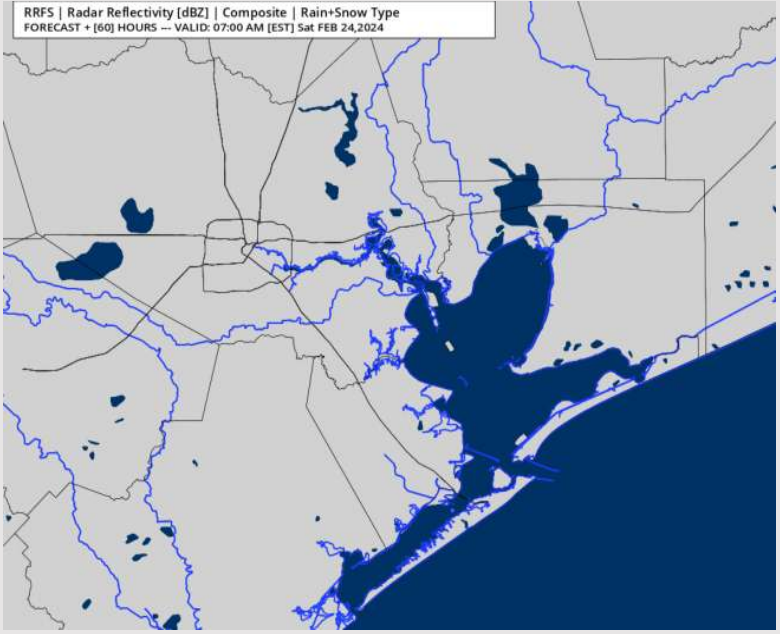
Precip: Favoring dry conditions for Saturday.

Wind: Winds out of the N/NW through 7AM before becoming variable as a weak front works through. Winds re-establish out of the South by 6PM. **N Morgan's Point:** Winds at 3 – 6 kts for the entire day. **S of Morgan's Point:** Winds at 3 – 6 kts through 6PM before becoming 4 - 8 kts.

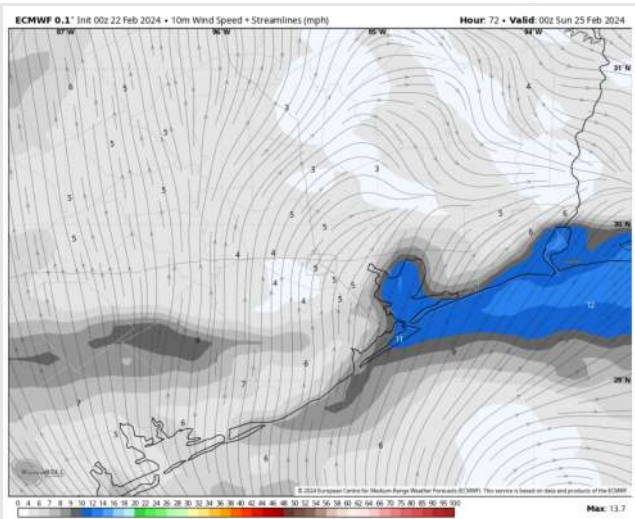
High Temps: **N of Morgan's Point:** Mid 70s F. **S of Morgan's Point:** Low 60s F.

Visibility: No fog risks favored for Saturday.

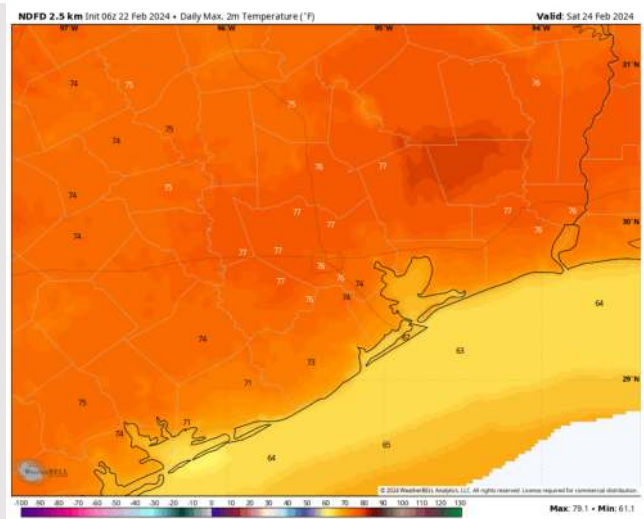
Precip Image: 6 AM CT



Wind Speed:
6 PM CT



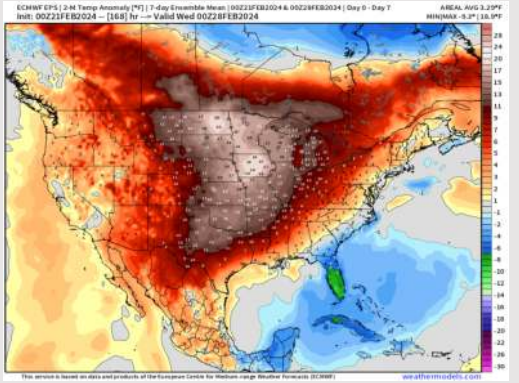
High Temps
Saturday



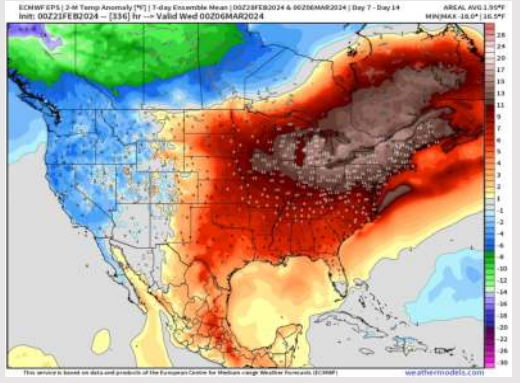
Houston Pilots: 2/22/24



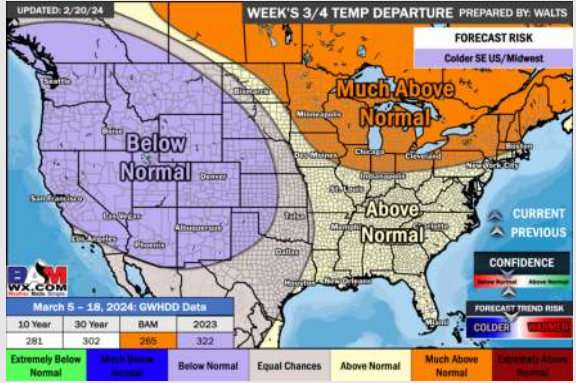
Next 7 Day Temperature Departure



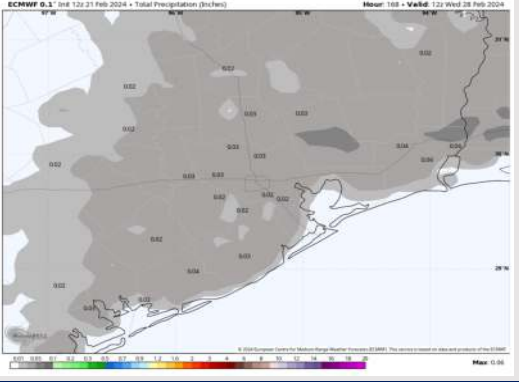
8-14 Day Temperature Departure



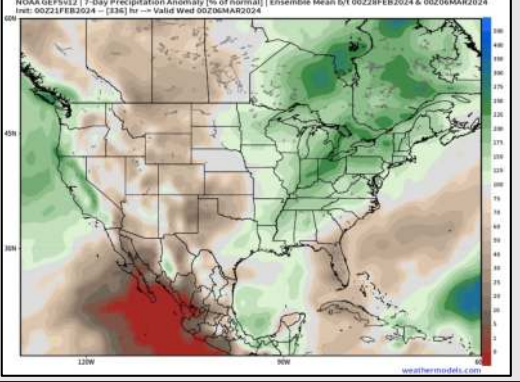
15-30 Day Temperature Departure



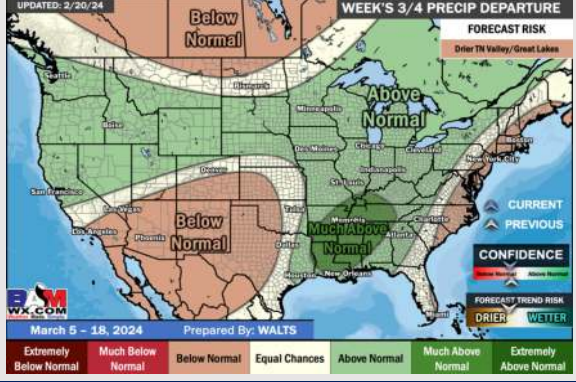
Next 7 Day Total Precipitation



8-14 Day % of Average Precip.



15-30 Day % of Average Precip.



- A drier week is favored ahead with a low end precip risk on THU. Above normal temperatures favored for the week ahead.
- Near normal to slightly above precipitation chances are at play during the week 2 timeframe. Temps expected to be above normal.
- Seasonable to slightly above normal temperatures and above normal chances for precipitation are favored in the weeks ¾ timeframe.