

# Houston Pilots Forecast Package



Updated: 2:15 PM CT

Sunday, February 11, 2024

Forecaster: Tyler Riggles

## Weather Headlines

- Drizzle and scattered shower risks will come to an end with the passing of a cold front near 3-4 PM CT.
- Gusts of 20 – 30 kts will remain in the forecast through the remainder of the weekend into Monday.
- Risks for patchy/patchy dense sea fog will steadily decrease as the cold front passes over the area. **Check Visibility slide for more details.**



Radar/NWS Alerts: 2:06 PM CT

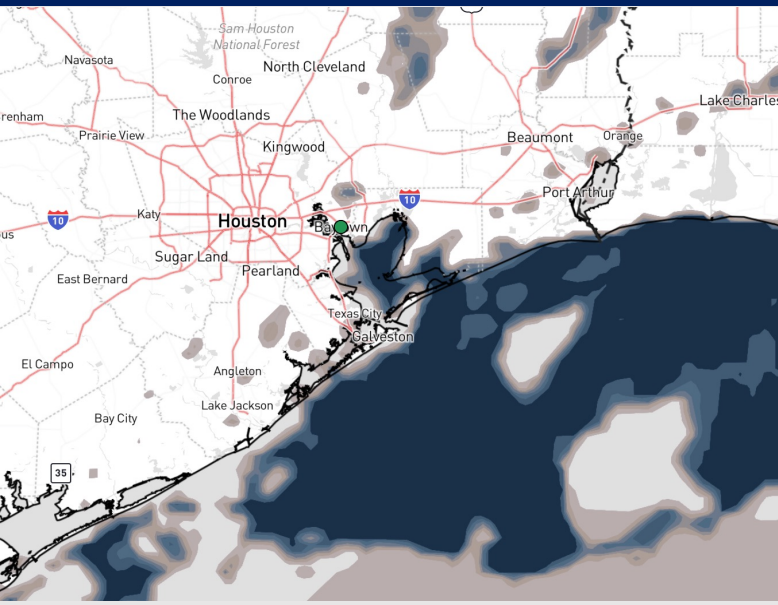


As always, please do not hesitate to reach out to us with any forecast questions via the chat option on Clarity or our on-call number, **(317)-560-8122** press 1 for forecast questions.

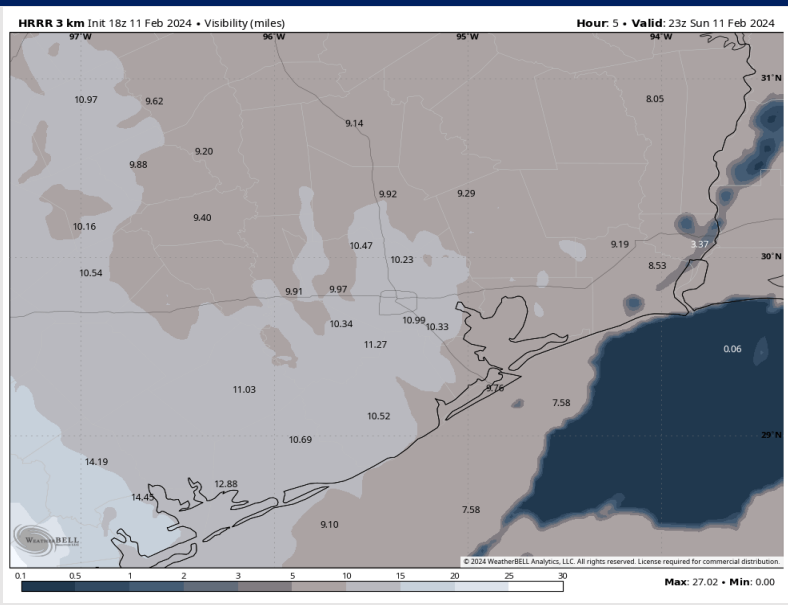
# Houston Pilots Visibility Report



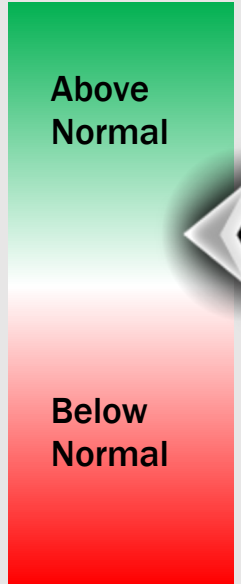
## Current Visibility as of 1:30 PM CT



## 5 PM CT SUN VISIBILITY



## Confidence



TIMEFRAME DISCUSSED	THREAT
NOW – 4 PM CT SUN	MED - HIGH

- Fog threats will now begin to steadily lift as the front enters the area. Stations near the entrance to the Galveston Bay like the Boarding Station, 11/12 and 25/26 will continue to be at risk for the densest fog (0.5 mi or less) while 37/38 through 75/76 can see a slightly higher visibility range of 1-2 miles.
- It is almost certain visibility will be normal across all stations by 5 PM CT today as the passing of the cold front will wipe out fog chances. Targeted timeframe for the dissipation of fog is near 3 PM CT over a one-hour period (front sweeps through 3 - 4 PM)

# Houston Pilots Extended Range Visibility Report



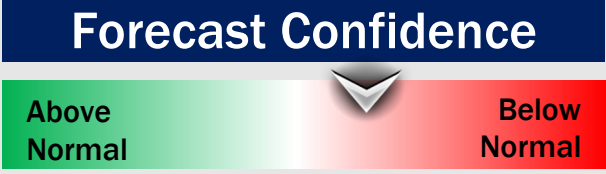
## Wednesday 2/14/24

Not favoring fog concerns at this time.



## Thursday 2/15/24

Not favoring fog concerns at this time.



## Friday 2/16/24

Not favoring fog concerns at this time, however some moderate to heavy showers can decrease visibility to 2-4 miles.



## Chance for Fog

Wednesday AM	Unlikely
Wednesday PM	Unlikely
Thursday AM	Unlikely
Thursday PM	Unlikely
Friday AM	Unlikely
Friday PM	Unlikely

# Houston Pilots Visibility Chart (miles)



## Forecast Confidence



Time	Sun 2pm	Sun 3pm	Sun 4pm	Sun 5pm	Sun 6pm	Sun 7pm	Sun 8pm	Sun 9pm	Sun 10pm	Sun 11pm	Mon 12am	Mon 1am	Mon 2am	Mon 3am	Mon 4am	Mon 5am	Mon 6am	Mon 7am	Mon 8am	Mon 9am	Mon 10am	Mon 11am	Mon 12pm	Mon 1pm
610 Bridge	9	9	9	10	10	10	10	10	10	10	10	10	10	10	10	10	10	10	10	10	10	10	10	10
Kinder 1	9	9	9	10	10	10	10	10	10	10	10	10	10	10	10	10	10	10	10	10	10	10	10	10
Greens Bayou	7	9	9	10	10	10	10	10	10	10	10	10	10	10	10	10	10	10	10	10	10	10	10	10
Shell Crude	7	9	9	10	10	10	10	10	10	10	10	10	10	10	10	10	10	10	10	10	10	10	10	10
Lynchburg Ferries	7	9	10	10	10	10	10	10	10	10	10	10	10	10	10	10	10	10	10	10	10	10	10	10
Exxon 3	5	9	9	10	10	10	10	10	10	10	10	10	10	10	10	10	10	10	10	10	10	10	10	10
Morgans Point	4	7	9	9	10	10	10	10	10	10	10	10	10	10	10	10	10	10	10	10	10	10	10	10
75/76	3	5	6	5	5	6	5	6	6	6	10	10	10	10	10	9	10	10	10	10	10	10	10	10
63/64	3	5	6	4	5	5	5	5	6	6	10	10	10	10	10	9	10	10	10	10	10	10	10	10
51/52	3	3	6	4	5	5	5	5	6	6	9	10	10	10	10	9	10	10	10	10	10	10	10	10
37/38	4	2	6	4	5	5	5	5	5	6	9	10	10	10	10	9	10	10	10	10	10	10	10	10
25/26	5	4	6	4	5	5	5	5	5	6	8	10	10	10	10	9	10	10	10	10	10	10	10	10
11/12	5	2	6	4	5	5	5	5	5	6	8	9	10	9	10	9	10	10	10	10	10	10	10	10
1 & 2 Bravo	3	3	4	4	5	5	4	4	5	5	6	6	9	9	10	9	10	10	10	10	10	10	10	10

**NOTE: This is automated data that may/may not agree with the official BAM thinking that's found on the daily slides or special visibility report slides. This data should be used as a guide only**

# Houston Pilots Wind Chart



## Forecast Confidence



## Example

Sustained wind 13 Knots  
Gusts 18 Knots  
Wind from the N

WS: 13  
G:18  
N

Time Knots	Sun 2pm	Sun 3pm	Sun 4pm	Sun 5pm	Sun 6pm	Sun 7pm	Sun 8pm	Sun 9pm	Sun 10pm	Sun 11pm	Mon 12am	Mon 1am	Mon 2am	Mon 3am	Mon 4am	Mon 5am	Mon 6am	Mon 7am	Mon 8am	Mon 9am	Mon 10am	Mon 11am	Mon 12pm	Mon 1pm
610 Bridge	9	9	10	10	9	11	11	13	12	13	13	13	13	13	15	15	15	15	14	14	15	15	15	15
	19	19	20	20	20	22	23	26	24	25	25	26	26	26	28	30	30	30	30	29	29	30	30	30
	W	WNW	NW	NW	NW	NW	NW	NW	NW	NW	NW	NW	NW	WNW	WNW	WNW	WNW	WNW	WNW	WNW	NW	NW	NW	NW
Kinder 1	9	9	9	9	9	11	11	13	12	12	13	13	13	13	15	15	15	15	14	14	15	14	15	15
	19	18	20	20	20	22	23	25	24	25	25	26	25	26	30	30	30	30	29	29	30	29	30	30
	W	WNW	NW	NW	NW	NW	NW	NW	NW	NW	NW	NW	WNW	WNW	WNW	WNW	WNW	WNW	WNW	WNW	NW	NW	NW	NW
Greens Bayou	9	9	9	9	9	11	11	13	12	12	13	13	13	13	15	14	14	14	14	13	14	15	14	15
	18	17	19	19	19	21	21	25	25	24	25	25	25	26	30	29	29	29	29	27	28	30	29	30
	W	WNW	NW	NW	NW	NW	NW	NW	NW	NW	NW	NW	WNW	WNW	WNW	WNW	WNW	WNW	WNW	WNW	NW	NW	NW	NW
Shell Crude	9	9	9	9	9	11	11	13	12	11	13	13	13	13	15	14	14	14	14	13	14	14	15	14
	17	17	19	19	19	21	21	25	24	23	25	25	25	25	30	29	29	29	29	27	28	29	29	30
	W	WNW	NW	NW	NW	NW	NW	NW	NW	NW	NW	NW	WNW	WNW	WNW	WNW	WNW	WNW	WNW	WNW	NW	NW	NW	NW
Lynchburg Ferries	8	9	9	9	9	10	11	13	12	11	11	12	12	13	14	14	14	13	13	13	14	15	15	15
	17	17	18	19	18	21	21	25	23	23	23	24	24	25	29	28	29	28	27	28	28	30	29	30
	W	WNW	NW	NW	NW	NW	NW	NW	NW	NW	NW	NW	WNW	WNW	WNW	WNW	WNW	WNW	WNW	WNW	WNW	NW	NW	NW
Exxon 3	9	9	9	11	11	13	15	16	16	15	15	14	16	17	17	16	16	17	16	16	17	17	16	15
	17	18	19	19	19	21	22	25	23	23	23	23	23	24	28	28	29	28	26	27	29	29	29	30
	WSW	W	WNW	WNW	NW	NW	NW	NW	NW	NW	NW	NW	WNW	WNW	WNW	WNW	WNW	WNW	WNW	WNW	WNW	NW	NW	NW
Morgans Point	8	8	9	10	11	12	15	15	15	15	14	14	15	16	17	17	16	17	16	16	17	17	16	15
	16	16	18	18	18	21	22	24	23	23	23	22	24	24	28	28	30	29	28	29	29	30	30	30
	SW	W	WNW	WNW	NW	NW	NW	NW	NW	NW	NW	NW	WNW	WNW	WNW	WNW	WNW	WNW	WNW	WNW	WNW	WNW	NW	NW
75/76	9	9	11	13	14	15	17	19	20	20	19	20	20	21	23	23	23	23	22	22	21	21	20	20
	17	17	19	21	21	22	25	28	30	30	29	29	30	31	32	34	33	34	32	32	30	31	31	32
	S	WSW	WNW	WNW	NW	NW	NW	NW	NW	NW	NW	NW	NW	WNW	WNW	WNW	WNW	WNW	WNW	WNW	NW	NW	NW	NW
63/64	9	9	10	13	13	15	17	19	20	20	19	19	20	21	23	24	23	24	23	23	21	21	20	20
	16	17	18	19	20	21	25	27	30	30	28	29	30	30	33	35	34	34	33	33	31	31	31	32
	S	SW	WNW	WNW	NW	NW	NW	NW	NW	NW	NW	NW	NW	WNW	WNW	WNW	WNW	WNW	WNW	WNW	WNW	NW	NW	NW
51/52	9	9	9	11	12	14	16	17	20	21	19	20	19	21	23	25	24	24	23	23	22	21	21	21
	15	17	17	16	18	20	23	25	30	30	28	29	29	30	33	36	35	35	34	34	32	32	31	32
	S	SSW	WNW	WNW	NW	NW	NW	NW	NW	NW	NW	NW	NW	WNW	WNW	WNW	WNW	WNW	WNW	WNW	NW	NW	NW	NW
37/38	9	9	9	11	12	13	16	17	20	21	19	20	19	21	23	24	24	25	23	24	23	23	21	21
	15	15	16	15	18	19	23	25	29	30	29	30	28	30	33	35	35	36	34	34	33	33	32	31
	S	SW	W	WNW	NW	NW	NW	NW	NW	NW	NW	NW	NW	WNW	WNW	WNW	WNW	WNW	WNW	WNW	NW	NW	NW	NW
25/26	9	9	9	10	11	12	15	17	19	21	19	20	19	20	23	24	25	24	24	23	23	22	22	21
	16	16	15	14	17	19	21	25	28	30	28	29	28	30	33	35	36	35	35	34	33	32	32	31
	SSW	SW	W	WNW	NW	NW	NW	NW	NW	NW	NW	NW	NW	WNW	WNW	WNW	WNW	WNW	WNW	WNW	NW	NW	NW	NW
11/12	9	9	9	9	9	11	13	15	17	19	18	18	19	19	22	23	23	23	23	23	22	22	21	21
	14	15	14	14	16	18	21	24	25	27	27	27	27	28	32	33	34	34	34	34	33	32	32	30
	SSW	SW	W	WNW	NW	NW	NW	NW	NW	NW	NW	NW	NW	NW	WNW	WNW	WNW	WNW	WNW	WNW	NW	NW	NW	NW
1 & 2 Bravo	9	9	9	9	11	13	16	18	19	22	21	21	22	23	25	26	27	27	26	27	25	25	23	23
	15	15	16	15	17	21	23	27	29	32	31	31	32	32	37	38	38	38	38	38	38	36	34	32
	S	SSW	SW	W	WNW	NW	NW	NW	NW	NW	NW	NW	NW	NW	NW	WNW	WNW	WNW	WNW	WNW	NW	NW	NW	NW

**NOTE: This is automated data that may/may not agree with the official BAM thinking that's found on the daily slides or special visibility report slides. This data should be used as a guide only**



# Houston Pilots: Sun. 2/11/2024



## Forecast Discussion

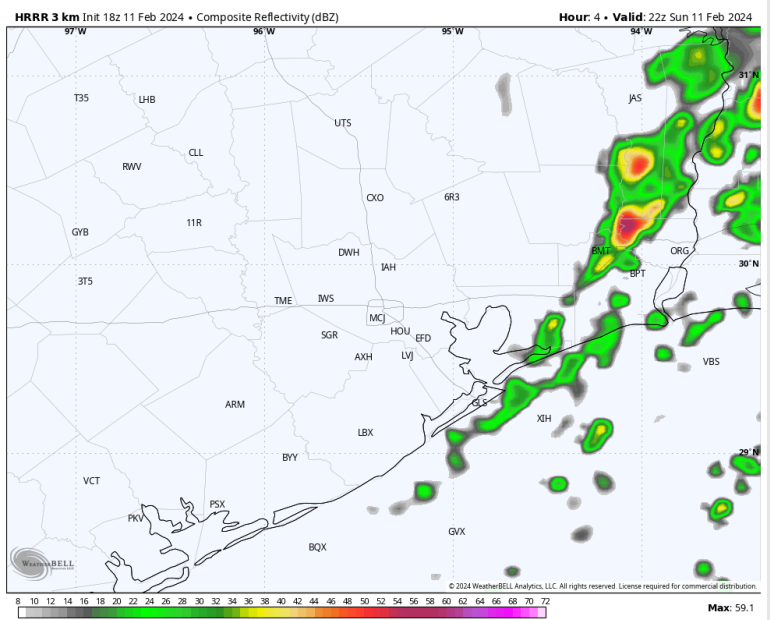
**Precip:** Scattered showers, some moderate to heavy, in association with a passing front linger through ~3-4 PM.

**Wind:** Winds out of the NW by 3-4 PM with the passing of the front. **N Morgan's Point:** Winds will be at 7-12 kts for the remainder of the day. **S of Morgan's Point:** Winds at 12-17 kts throughout the remainder of the day. **Wind gusts of 25-30 kts possible for all stations for the rest of the day.**

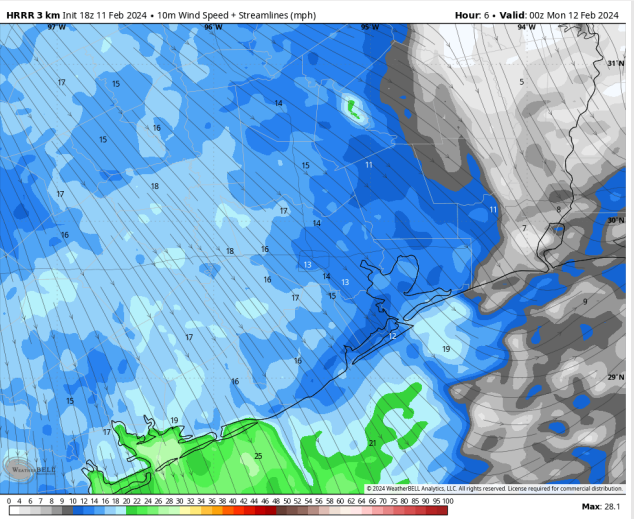
**Low Temps:** **N of Morgan's Point:** Low 40s F. **S of Morgan's Point:** Upper 40s.

**Visibility:** As a front passes through this afternoon, moderate to at times heavy rain will be able to create reduced visibilities along with patchy fog mixed in towards the coast. Expecting patchy fog risks to dissipate after ~3-4 PM with the passing of the front.

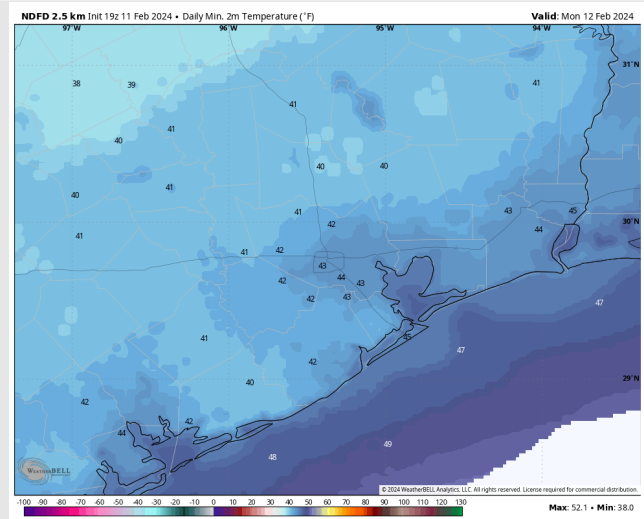
## Precip Image: 4 PM CT



**Wind Speed:  
6 PM CT**



**Low Temps  
MON AM**



# Houston Pilots: Mon. 2/12/2024



## Forecast Discussion

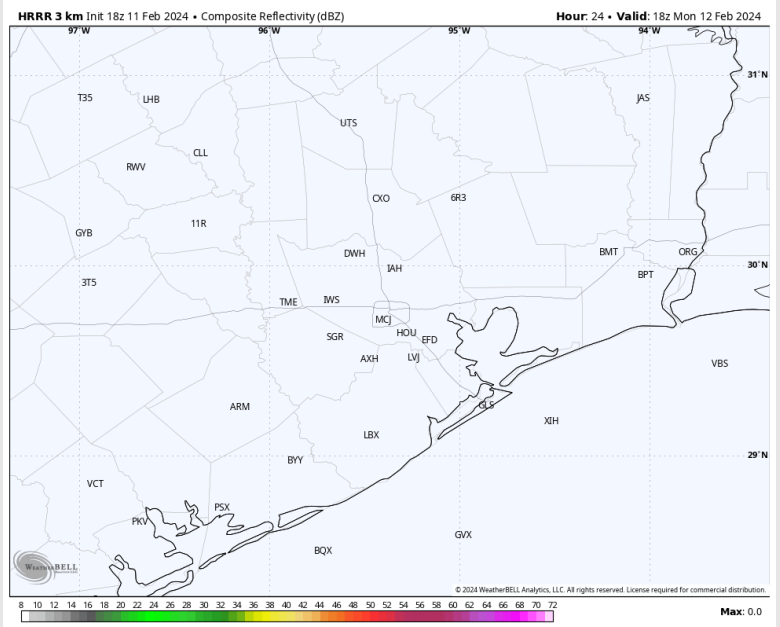
**Precip:** Favoring dry conditions for Monday

**Wind:** Winds will remain out of the NW throughout Monday. **N Morgan's Point:** Winds at 13-18 kts through 7 PM, with winds gradually decreasing after that time to 3-8 kts by 12 AM. **S of Morgan's Point:** Winds at 18- 23 kts through 7 PM, at which time they begin a gradual decrease to 4-9 kts by 12 AM. The Boarding Station remains slightly higher at 6-11 kts. **Wind gusts of 25-30+ kts possible for all Stations through 7 PM.**

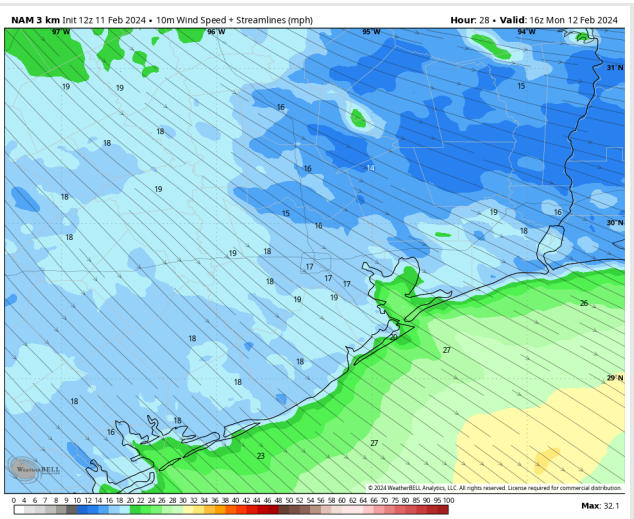
**High Temps:** **N of Morgan's Point:** Upper 50s-Near 60 F. **S of Morgan's Point:** Mid-Upper 50s F.

**Visibility:** Not anticipating any visibility risks for Monday.

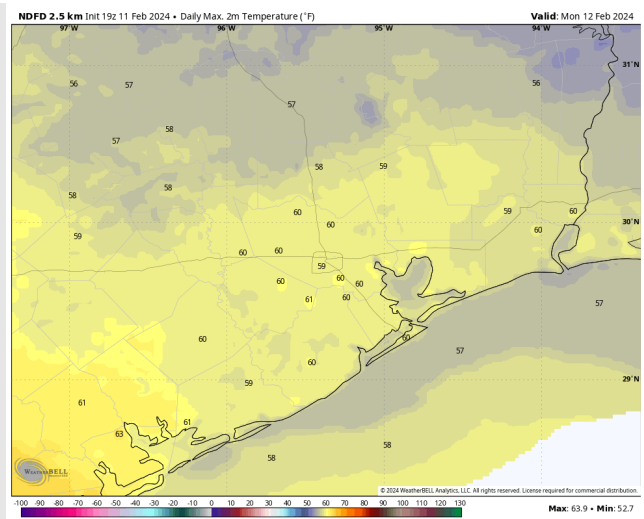
## Precip Image: 12 PM CT



Wind Speed:  
10 AM CT



High Temps  
Monday



## Forecast Discussion

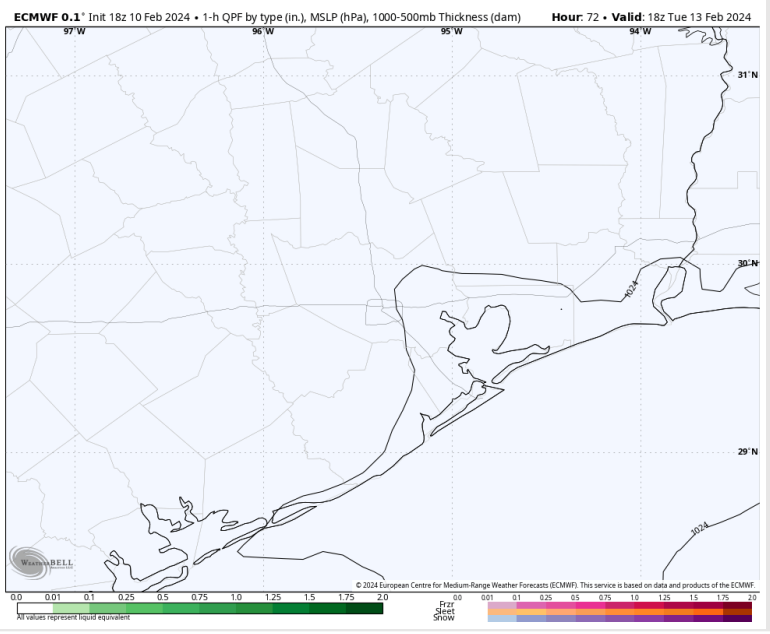
**Precip:** Favoring dry conditions for Tuesday.

**Wind:** Winds will be veering clockwise through the AM, settling out of the SE by 12 PM. **N of Morgan's Point:** Winds at 3-8 kts throughout the day. **S of Morgan's Point:** Gradually decreasing in the AM to 4-9 kts by 7 AM.

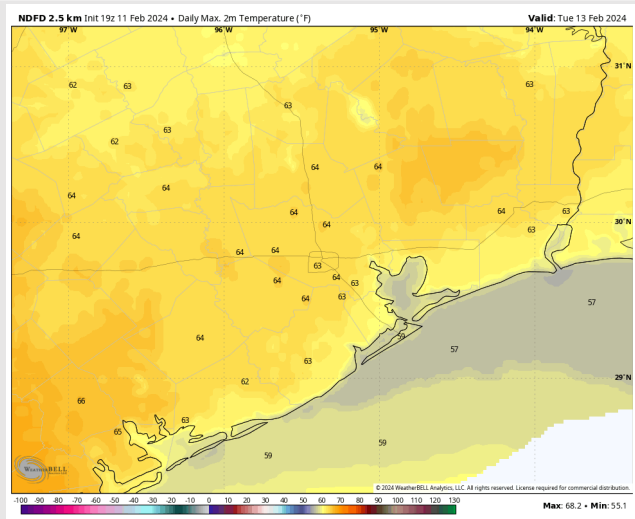
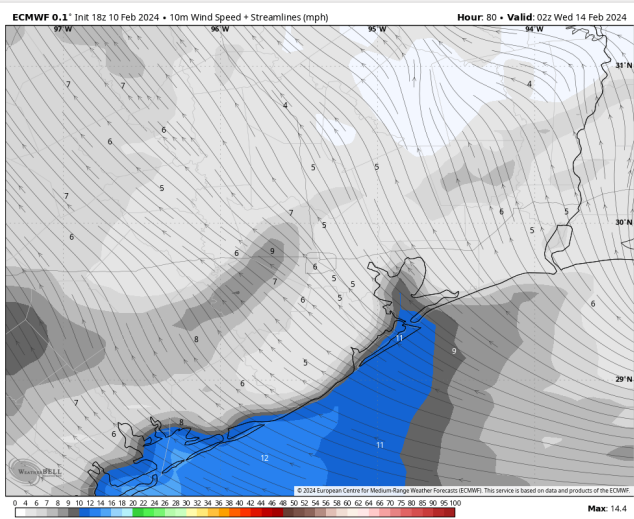
**High Temps:** **N of Morgan's Point:** Low 60s F. **S of Morgan's Point:** Upper 50s F

**Visibility:** No visibility concerns for Tuesday.

## Precip Image: 12 PM CT



Wind Speed:  
6 PM CT

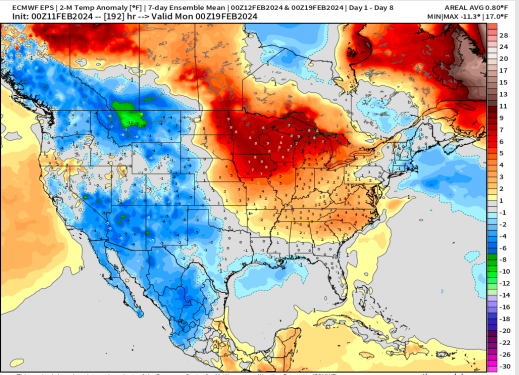


High Temps  
Tuesday

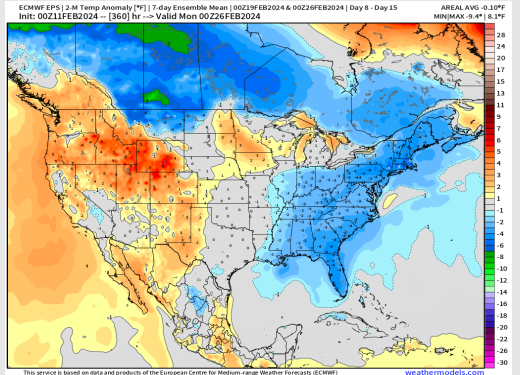


# Houston Pilots: 2/11/24

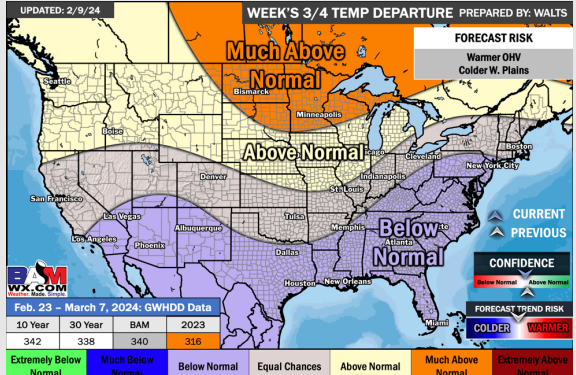
## Next 7 Day Temperature Departure



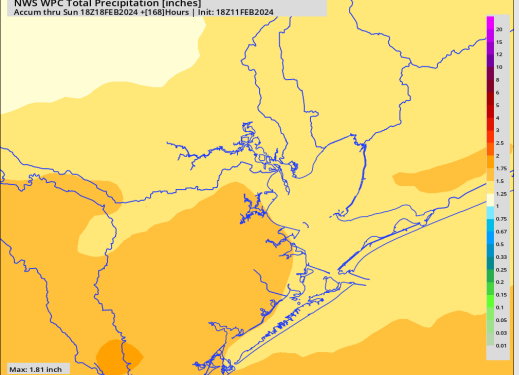
## 8-14 Day Temperature Departure



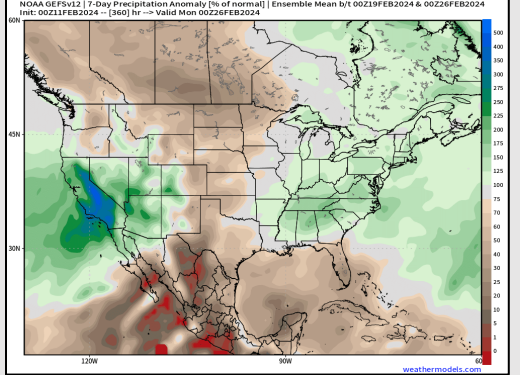
## 15-30 Day Temperature Departure



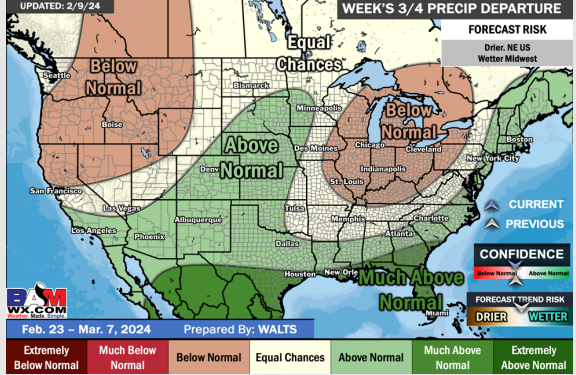
## Next 7 Day Total Precipitation



## 8-14 Day % of Average Precip.



## 15-30 Day % of Average Precip.



- The active weekend comes to an end with the passing of a front, making way for dry conditions to start the next week. Below normal temperatures favored for the week ahead.
- Below normal precipitation chances are at play during the week 2 timeframe. Temps expected to be seasonal to just below normal.
- Below normal temperatures and much above normal chances for precipitation are favored in the weeks 3/4 timeframe.