

Houston Pilots Forecast Package



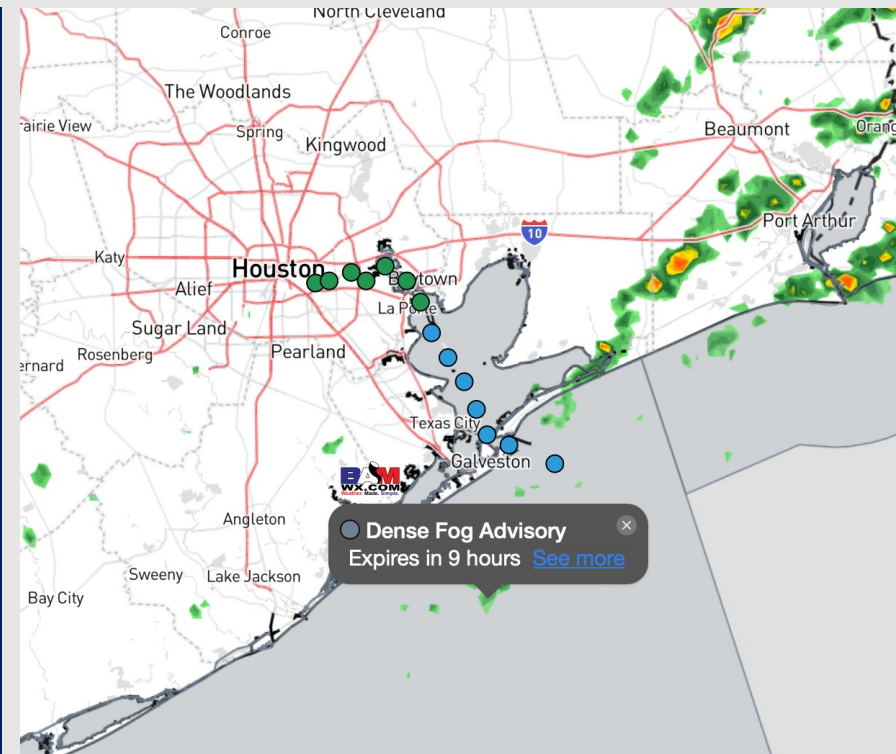
Updated: 12:10 AM CT

Saturday, February 10, 2024

Forecaster: Tyler Riggles

Weather Headlines

- Drizzle and scattered shower expected to continue through the remainder of the weekend. A few isolated storms can't be ruled out.
- Gusts of 20 – 30 kts will remain in the forecast through the remainder of the weekend into Monday.
- Risks for patchy/patchy dense sea fog remain in play this morning into the early afternoon. **Check Visibility slide for more details.**



Radar/NWS Alerts: 12:05 AM CT

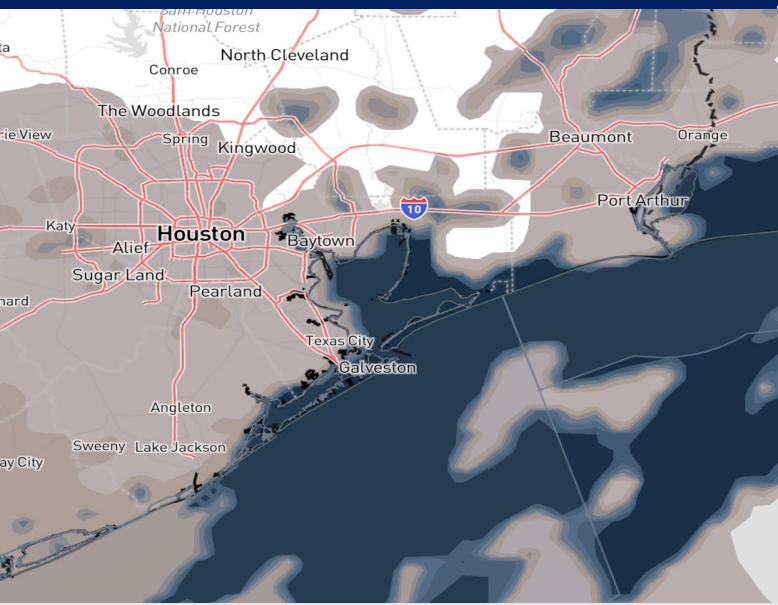


As always, please do not hesitate to reach out to us with any forecast questions via the chat option on Clarity or our on-call number, **(317)-560-8122** press 1 for forecast questions.

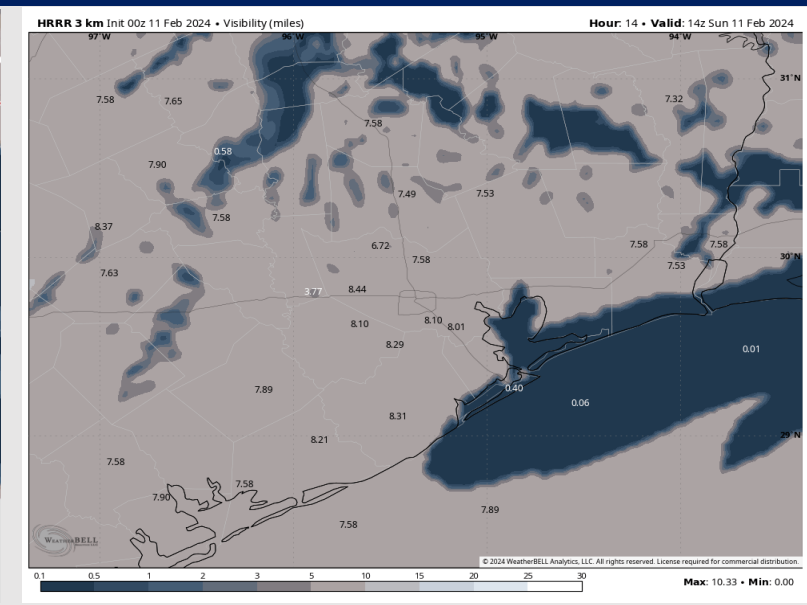
Houston Pilots Visibility Report



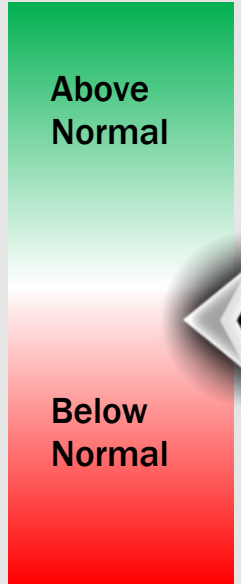
Current Vis as of 11:30 PM CST



8 AM CT SUN VISIBILITY



Confidence



TIMEFRAME DISCUSSED	THREAT
NOW - 2 PM SUN	MED - HIGH

- Stations South of Morgan's Point continue to see widespread, locally dense fog less than 1 mi in visibility. Lower confidence exists on the final exit time of sea fog as patchy coverage does run the risk of lingering through sunrise.
- It is possible that Morgan's Point, Exxon 3 and Lynchburg Ferries can see additional patchy fog/mist through ~5-6 AM, reducing visibilities to 2-4 miles.
- There will be a cold front sweeping through from about 12 - 4 PM and it would depend on the timing of this front to completely wipe out fog chances. This 4-hour window for now would be when fog chances can potentially end into the early afternoon.

Houston Pilots Extended Range Visibility Report



Wednesday 2/14/24

Not favoring fog concerns at this time.

Forecast Confidence



Thursday 2/15/24

Not favoring fog concerns at this time.

Forecast Confidence



Friday 2/16/24

Not favoring fog concerns at this time, however some moderate to heavy showers can decrease visibility to 2-4 miles.

Forecast Confidence



Chance for Fog

Wednesday AM	Unlikely
Wednesday PM	Unlikely
Thursday AM	Unlikely
Thursday PM	Unlikely
Friday AM	Unlikely
Friday PM	Unlikely

Houston Pilots Visibility Chart (miles)



Forecast Confidence



Time	Sun 12am	Sun 1am	Sun 2am	Sun 3am	Sun 4am	Sun 5am	Sun 6am	Sun 7am	Sun 8am	Sun 9am	Sun 10am	Sun 11am	Sun 12pm	Sun 1pm	Sun 2pm	Sun 3pm	Sun 4pm	Sun 5pm	Sun 6pm	Sun 7pm	Sun 8pm	Sun 9pm	Sun 10pm	Sun 11pm
610 Bridge	3	3	3	3	2	3	3	3	2	4	6	6	10	10	10	10	10	10	10	10	10	10	10	10
Kinder 1	3	3	3	3	2	3	3	3	2	4	6	6	10	10	10	10	10	10	10	10	10	10	10	10
Greens Bayou	3	3	3	1	0.7	3	3	3	2	4	6	6	9	10	10	10	10	10	10	10	10	10	10	10
Shell Crude	3	3	3	1	0.5	3	3	3	2	4	6	6	7	9	10	10	10	10	10	10	10	10	10	10
Lynchburg Ferries	3	3	3	0.7	0.5	3	3	3	2	4	6	6	9	10	10	10	10	10	10	10	10	10	10	10
Exxon 3	3	3	0.5	0.5	0.2	1	3	3	2	4	5	6	7	9	10	10	10	10	10	10	10	10	10	10
Morgans Point	0.7	0.5	0.5	0.2	0.2	0.5	0.5	2	2	3	5	6	6	9	10	10	10	10	10	10	10	10	10	10
75/76	0.5	0.2	0.2	0.2	0.2	0.5	0.5	0.2	0.2	0.2	2	3	4	5	5	8	10	10	10	10	10	10	10	10
63/64	0.5	0.2	0.2	0.2	0.2	0.5	0.5	0.2	0.2	0.2	2	3	4	4	5	7	10	10	10	10	10	10	10	10
51/52	0.5	0.2	0.2	0.2	0.2	0.5	0.5	0.5	0.5	1	2	4	4	4	5	5	9	10	10	10	10	10	10	10
37/38	0.5	0.2	0.2	0.2	0.2	0.5	0.5	1	0.2	1	3	4	4	4	5	4	9	10	10	10	10	10	10	10
25/26	0.7	0.2	0.2	0.2	0.2	0.2	0.5	0.5	0.2	0.7	3	4	4	4	4	2	7	9	10	10	10	10	10	10
11/12	0.5	0.2	0.2	0.2	0.2	0.2	0.5	0.5	0.2	0.2	2	3	4	4	4	0.2	4	8	10	10	10	10	10	10
1 & 2 Bravo	0.2	0.2	0.2	0.2	0.2	0.2	0.5	0.2	0.2	0.2	0.8	2	3	4	0.8	0.2	0.2	1	9	10	10	10	10	10

NOTE: This is automated data that may/may not agree with the official BAM thinking that's found on the daily slides or special visibility report slides. This data should be used as a guide only

Houston Pilots Wind Chart



Forecast Confidence



Example

Sustained wind 13 Knots
Gusts 18 Knots
Wind from the N

WS: 13
G:18
N

Time Knots	Sun 12am	Sun 1am	Sun 2am	Sun 3am	Sun 4am	Sun 5am	Sun 6am	Sun 7am	Sun 8am	Sun 9am	Sun 10am	Sun 11am	Sun 12pm	Sun 1pm	Sun 2pm	Sun 3pm	Sun 4pm	Sun 5pm	Sun 6pm	Sun 7pm	Sun 8pm	Sun 9pm	Sun 10pm	Sun 11pm
610 Bridge	5	4	5	5	6	7	7	8	9	10	10	11	11	10	9	9	10	9	9	9	9	9	9	11
	9	8	10	10	12	13	15	16	18	21	21	21	21	21	20	20	20	19	18	18	18	18	18	21
	SSE	SSE	SSE	SSE	SSE	SSE	SSE	S	S	S	S	SSW	SW	WSW	W	W	WNW	WNW	WNW	WNW	NW	NW	NW	NW
Kinder 1	5	4	5	5	6	7	7	8	9	10	10	10	11	10	9	9	9	9	9	9	9	9	9	11
	10	8	10	9	12	13	15	15	18	21	21	21	21	21	20	20	20	19	18	17	17	18	20	21
	SSE	SSE	SSE	SSE	SSE	SSE	SSE	S	S	S	S	SSW	SW	WSW	W	W	WNW	WNW	WNW	NW	NW	NW	NW	NW
Greens Bayou	5	4	4	5	5	6	7	7	9	9	10	10	11	9	9	9	9	9	8	9	9	9	10	10
	9	7	9	9	10	13	14	15	17	19	21	20	21	20	20	19	19	17	16	17	17	18	20	21
	SSE	SE	SSE	SSE	SSE	SSE	S	S	S	S	S	SSW	SW	WSW	W	W	WNW	WNW	WNW	NW	NW	NW	NW	NW
Shell Crude	5	3	4	5	5	6	7	7	8	9	10	9	10	9	9	9	9	9	8	9	8	9	9	9
	9	7	9	9	11	13	14	14	17	18	20	19	21	20	19	18	19	17	16	17	17	18	20	20
	SSE	SSE	SSE	SSE	SSE	SSE	SSE	S	S	S	S	SSW	SSW	WSW	W	W	WNW	WNW	WNW	NW	NW	NW	NW	NW
Lynchburg Ferries	4	3	4	4	5	5	7	6	7	9	9	9	9	9	9	9	9	9	8	8	9	9	9	10
	9	7	8	8	10	12	13	13	15	17	19	18	20	19	18	17	18	17	16	16	17	19	20	20
	SSE	SSE	SE	SSE	SSE	SSE	SSE	S	S	S	S	S	SSW	WSW	W	W	WNW	WNW	WNW	NW	NW	NW	NW	NW
Exxon 3	5	5	5	5	7	7	7	7	8	9	9	9	9	9	9	9	9	9	9	9	11	12	12	13
	9	8	9	10	12	12	13	13	15	17	18	18	19	18	18	18	18	18	17	17	17	20	18	20
	SSE	SSE	SSE	SSE	SSE	SSE	SSE	SSE	SSE	S	S	S	SSW	SW	WSW	W	W	WNW	WNW	WNW	NW	NW	NW	NW
Morgans Point	4	5	5	5	7	7	7	7	7	8	9	9	9	9	9	9	9	9	9	9	11	11	12	13
	8	7	8	9	11	12	13	13	15	17	17	19	19	19	18	17	17	18	16	16	17	18	18	19
	SSE	SSE	SSE	SSE	SSE	SSE	SSE	SSE	S	S	S	S	SSW	SW	W	W	WNW	WNW	WNW	WNW	NW	NW	NW	NW
75/76	6	7	7	7	9	11	11	11	11	11	11	11	10	10	9	10	11	12	12	13	13	15	16	17
	9	10	11	11	13	16	16	15	15	15	17	19	20	20	19	19	19	19	18	18	19	21	23	24
	SSE	SSE	SSE	SSE	SSE	SSE	SSE	SSE	SSE	S	S	S	SSW	SW	WSW	W	W	WNW	WNW	WNW	NW	NW	NW	NW
63/64	6	7	7	7	8	10	10	10	10	9	11	11	9	9	9	9	10	12	11	12	13	14	16	16
	9	9	10	10	12	14	14	14	14	14	17	19	19	19	18	18	18	17	17	18	18	21	23	23
	SSE	SSE	SSE	SSE	SSE	SSE	SSE	SSE	SSE	S	S	S	SSW	SW	W	W	WNW	WNW	WNW	NW	NW	NW	NW	NW
51/52	5	5	6	7	8	9	9	10	9	9	10	11	10	9	9	9	9	11	10	11	11	13	15	16
	8	8	9	9	12	14	14	14	14	14	15	18	20	19	17	17	16	16	14	16	17	19	21	23
	SSE	SSE	SSE	SSE	SSE	SSE	SSE	SSE	S	S	S	S	SSW	SW	WSW	W	W	WNW	WNW	WNW	NW	NW	NW	NW
37/38	5	5	5	7	7	9	9	11	10	10	10	11	11	10	9	9	9	10	9	11	11	13	14	15
	8	7	8	9	11	14	14	15	15	15	16	18	19	20	17	16	16	15	14	15	16	18	21	22
	S	SSE	SSE	SSE	SSE	S	SSE	SSE	S	S	S	S	S	SSW	SW	WSW	W	W	WNW	WNW	WNW	NW	NW	NW
25/26	5	5	5	7	7	9	9	10	10	10	11	11	11	11	9	9	9	9	9	9	11	11	14	15
	7	7	7	9	11	13	14	15	15	16	16	19	20	20	18	16	15	14	14	15	16	17	20	21
	S	SSE	SSE	SSE	SSE	S	SSE	S	S	S	S	S	S	SSW	SW	WSW	W	W	WNW	WNW	WNW	NW	NW	NW
11/12	4	5	5	6	7	8	9	9	9	9	10	11	11	11	9	9	9	8	7	8	9	9	12	13
	8	7	8	10	12	13	13	14	15	15	16	19	20	18	16	15	13	13	13	14	15	16	17	18
	S	SSE	SSE	SSE	SSE	S	S	S	S	S	S	S	S	SSW	SW	W	W	WNW	WNW	NW	NW	NW	NW	NW
1 & 2 Bravo	7	7	8	9	9	11	11	11	10	10	11	11	11	11	10	9	9	9	9	10	12	14	15	17
	11	11	12	13	14	16	16	15	15	15	16	19	20	20	17	15	15	15	14	16	19	20	21	24
	S	SSE	SSE	SSE	S	S	SSE	SSE	SSE	S	S	S	S	SSW	SSW	SW	WSW	W	W	WNW	NW	NW	NW	NW

NOTE: This is automated data that may/may not agree with the official BAM thinking that's found on the daily slides or special visibility report slides. This data should be used as a guide only

Houston Pilots: Sun. 2/11/2024



Forecast Discussion

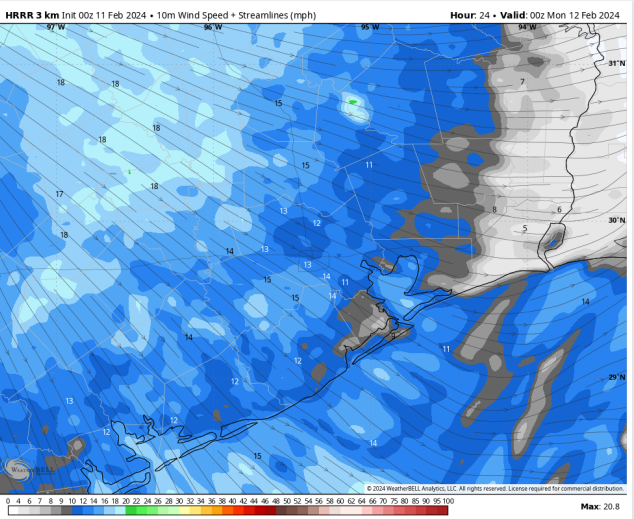
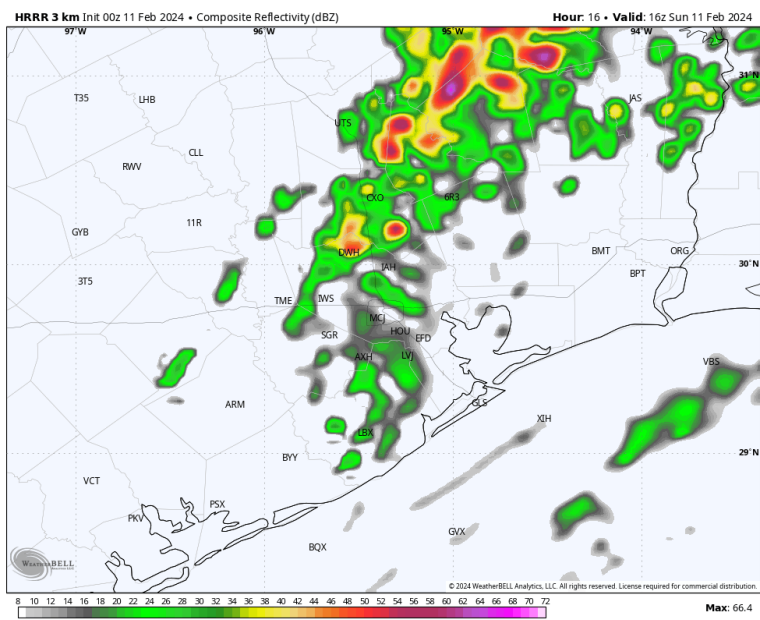
Precip: Favoring light hit/miss drizzle (10%) to hang around through ~10 AM. Chances will then increase after 10 AM as scattered moderate to heavy showers enter from the NW in association with a passing front. These scattered showers will linger through 3 PM.

Wind: Winds out of the SSE will veer out of the NE by 2 PM. **N Morgan's Point:** Winds will be at 3-8 kts until 8 AM-CT before increasing to 7-12 kts for the remainder of the day. **S of Morgan's Point:** Winds at 3-8 kts will gradually increase to 10-15 kts by 9 AM, remaining at that speed throughout the day. **Wind gusts of 25-30 kts possible for all stations after 10 AM.**

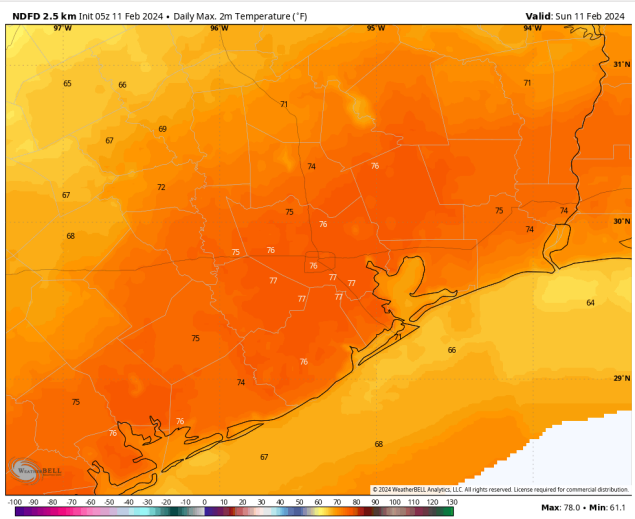
High Temps: **N of Morgan's Point:** Mid 70s F. **S of Morgan's Point:** Mid 60s.

Visibility: As a front passes through this AM, moderate to at times heavy rain will be able to create reduced visibilities along with patchy fog mixed in towards the coast.

Precip Image: 10 AM CT



Wind Speed:
6 PM CT



High Temps
Sunday

Houston Pilots: Mon. 2/12/2024



Forecast Discussion

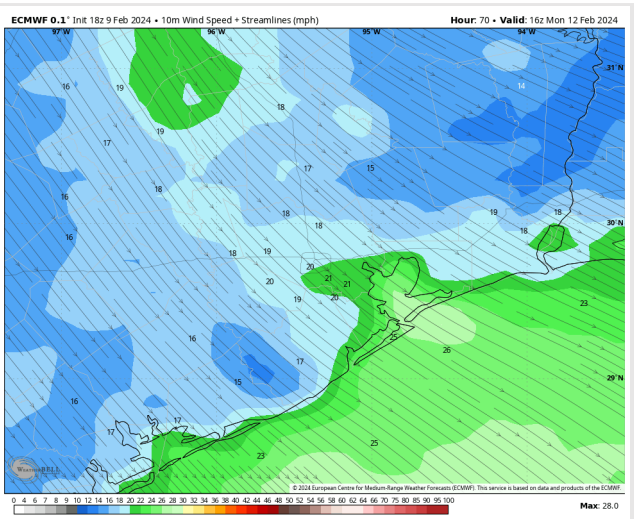
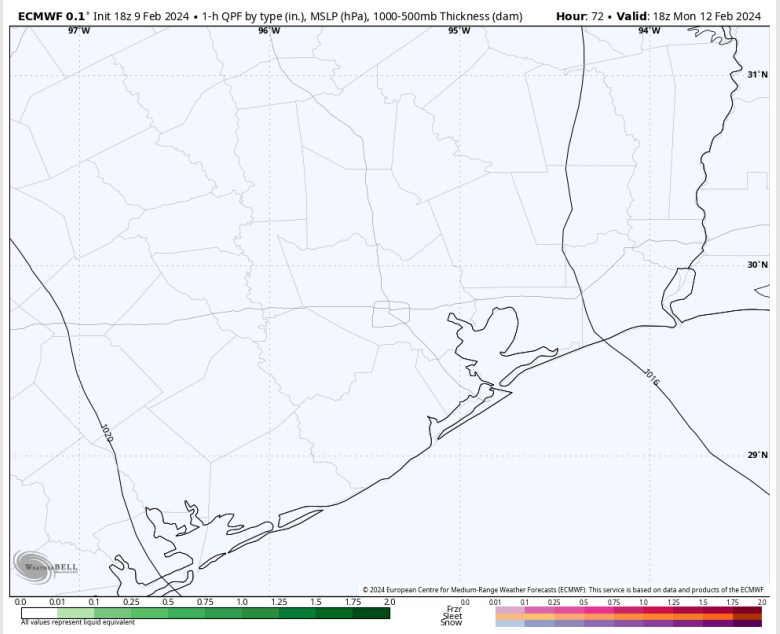
Precip: Favoring dry conditions for Monday

Wind: Winds will remain out of the NW throughout Monday. **N Morgan's Point:** Winds at 13-18 kts through 7 PM, with winds gradually decreasing after that time to 3-8 kts by 12 AM. **S of Morgan's Point:** Winds at 18- 23 kts through 7 PM, at which time they begin a gradual decrease to 4-9 kts by 12 AM. The Boarding Station remains slightly higher at 6-11 kts. **Wind gusts of 25-30 kts possible for all Stations through 7 PM.**

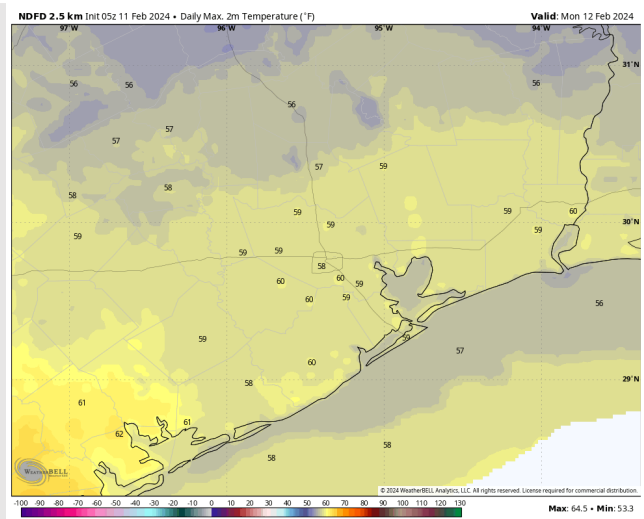
High Temps: **N of Morgan's Point:** Upper 50s F. **S of Morgan's Point:** Mid 50s F.

Visibility: Not anticipating any visibility risks for Monday.

Precip Image: 12 PM CT



Wind Speed:
10 AM CT



High Temps
Monday

Houston Pilots: Tue. 2/13/2024



Forecast Discussion

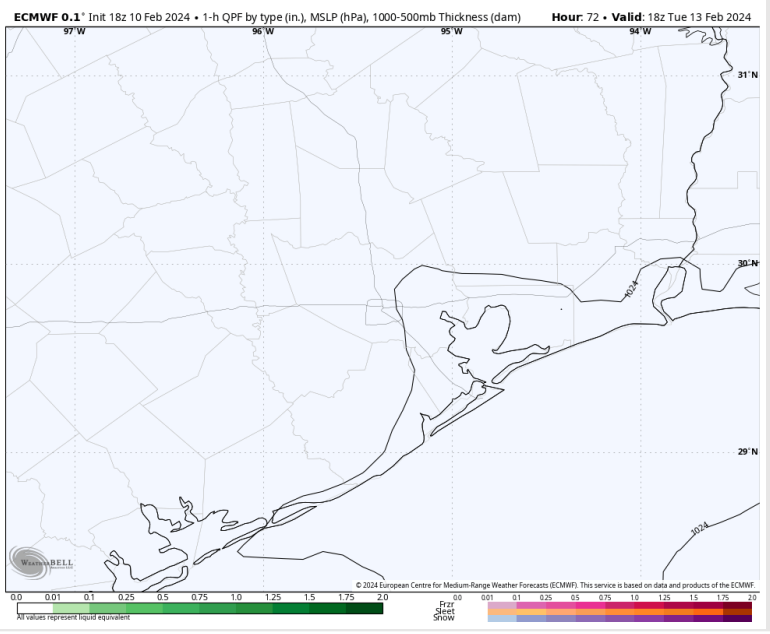
Precip: Favoring dry conditions for Tuesday.

Wind: Winds will be veering clockwise through the AM, settling out of the SE by 12 PM. **N of Morgan's Point:** Winds at 3-8 kts throughout the day. **S of Morgan's Point:** Gradually decreasing in the AM to 4-9 kts by 7 AM.

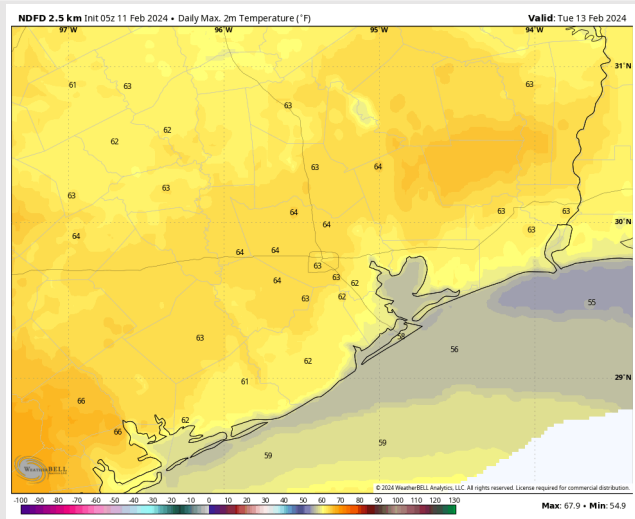
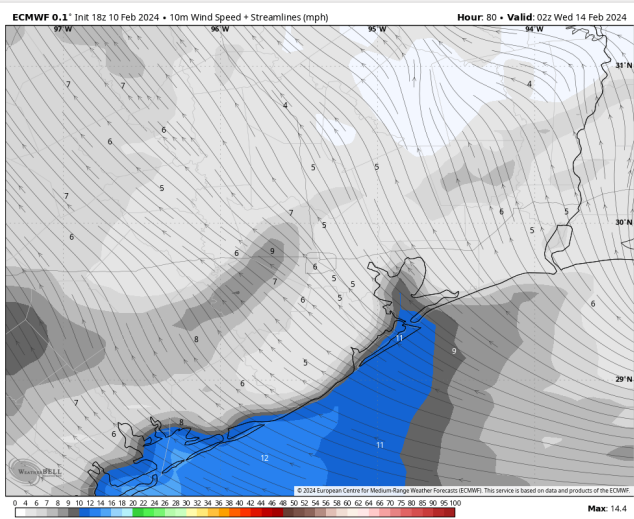
High Temps: **N of Morgan's Point:** Low 60s F. **S of Morgan's Point:** Upper 50s F

Visibility: No visibility concerns for Tuesday.

Precip Image: 12 PM CT



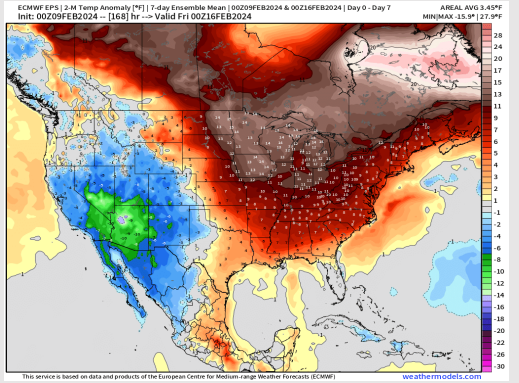
Wind Speed:
6 PM CT



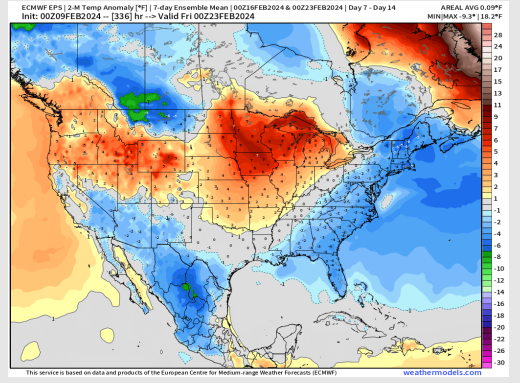
High Temps
Tuesday

Houston Pilots: 2/10/24

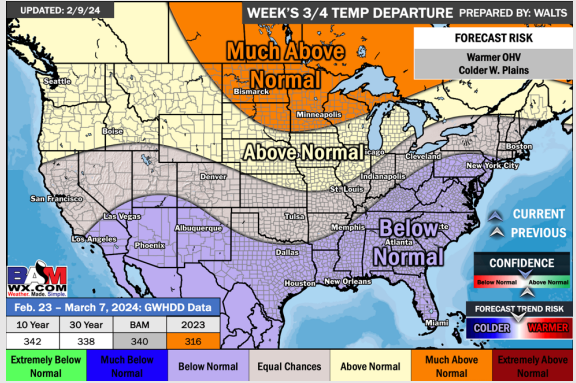
Next 7 Day Temperature Departure



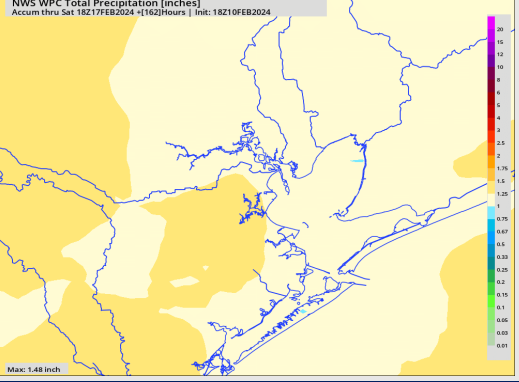
8-14 Day Temperature Departure



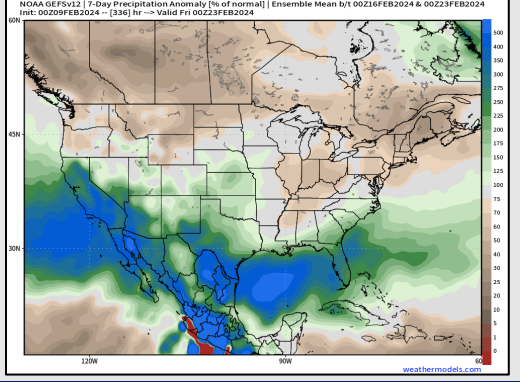
15-30 Day Temperature Departure



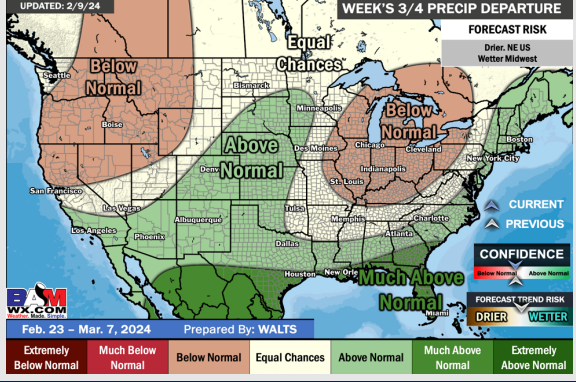
Next 7 Day Total Precipitation



8-14 Day % of Average Precip.



15-30 Day % of Average Precip.



- The active weekend continues, making way for dry conditions to start the next week. Above normal temperatures favored for the week ahead.
- Slightly above normal precipitation chances are at play during the week 2 timeframe. Temps expected to be seasonable to just below normal.
- Below normal temperatures and much above normal chances for precipitation are favored in the weeks 3/4 timeframe.