

Houston Pilots Forecast Package



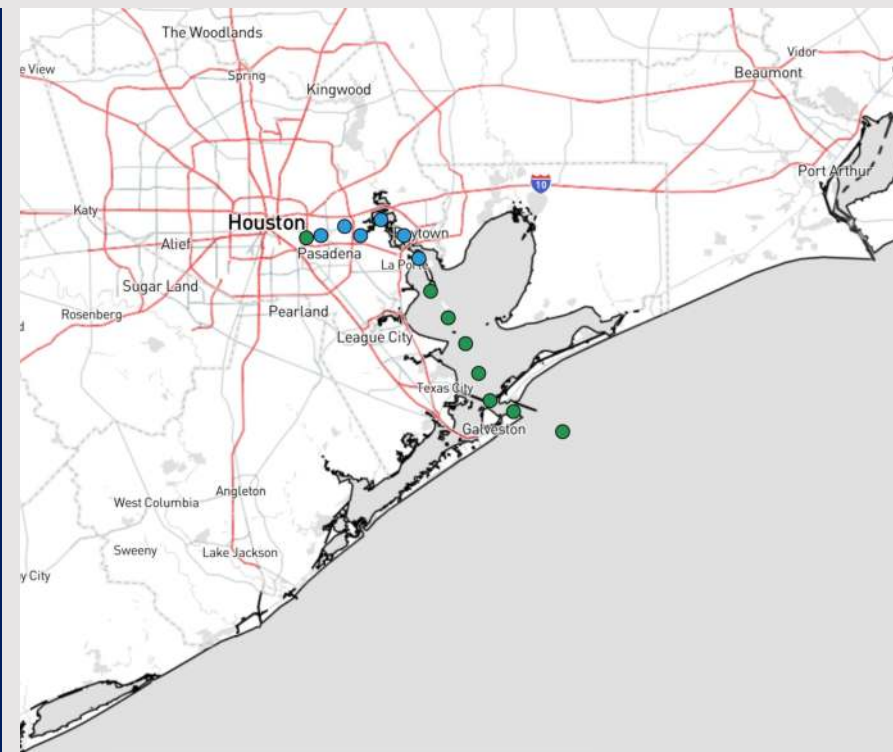
Updated: 12:20 AM CT

Friday, February 9, 2024

Forecaster: Tyler Riggles

Weather Headlines

- Drizzle and scattered showers will begin to work into the area, with chances continuing through start of the weekend.
- Gusts of 20 – 25+ mph will remain in the forecast through the weekend.
- Increasing patchy sea fog risks will be in play this morning, with the risk continuing off and on into the weekend.
Check Visibility slide for more details on the fog risks this morning.



Radar/NWS Alerts: 12:12 AM CT

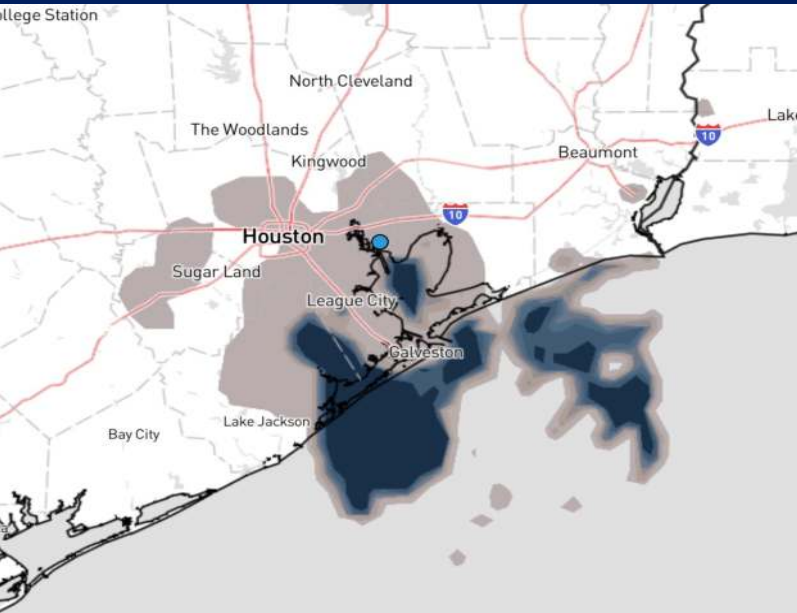


As always, please do not hesitate to reach out to us with any forecast questions via the chat option on Clarity or our on-call number, **(317)-560-8122** press 1 for forecast questions.

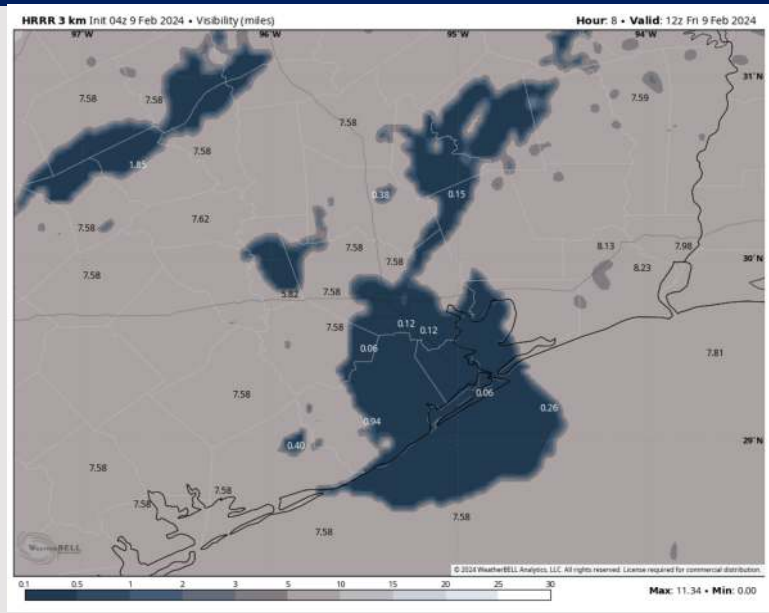
Houston Pilots Visibility Report



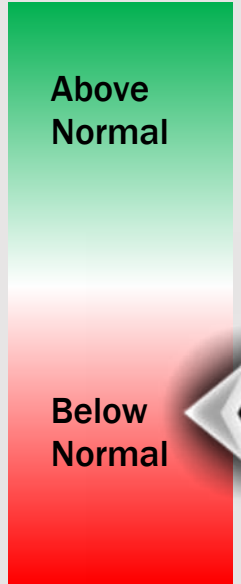
Current Vis as of 11:45 PM-CT



6 AM CT FRI VISIBILITY



Confidence



TIMEFRAME DISCUSSED	THREAT
NOW - 9 AM FRI	Medium

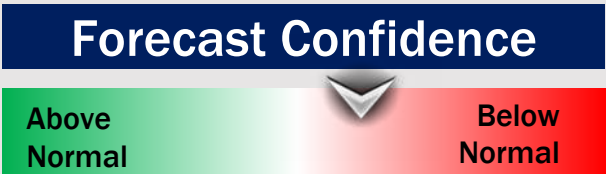
- There is low confidence regarding the development of patchy fog through this morning. Patchy drizzle / showers and SE winds may encourage hazy conditions this evening with a risk for patchy fog to develop after midnight.
- **North of Morgan's Point:** Not anticipating much of a fog risk for stations N of Morgan's Point as better potential remains within Galv. Bay. That being said, conditions may become hazy at times as spotty light precip moves through the area, possibly reducing visibility to 2 – 4 miles.
- **South of Morgan's Point:** Greatest risk for patchy/patchy dense fog will continue through 9 AM-CT. Favoring best timeframe for dense fog to be between 3AM-6AM CT. Patchy fog can linger past 9 AM-CT but favored to clear by 12PM-CT at the very latest.

Houston Pilots Extended Range Visibility Report



Monday 2/12/24

Not favoring fog concerns at this time.



Tuesday 2/13/24

Not favoring fog concerns at this time.



Wednesday 2/14/24

Not favoring fog concerns at this time.



Chance for Fog

Monday AM	Unlikely
Monday PM	Unlikely
Tuesday AM	Unlikely
Tuesday PM	Unlikely
Wednesday AM	Unlikely
Wednesday PM	Unlikely

Houston Pilots Visibility Chart (miles)



Forecast Confidence



Time	Fri 1am	Fri 2am	Fri 3am	Fri 4am	Fri 5am	Fri 6am	Fri 7am	Fri 8am	Fri 9am	Fri 10am	Fri 11am	Fri 12pm	Fri 1pm	Fri 2pm	Fri 3pm	Fri 4pm	Fri 5pm	Fri 6pm	Fri 7pm	Fri 8pm	Fri 9pm	Fri 10pm	Fri 11pm	Sat 12am
610 Bridge	9	4	1	0.5	0.3	0.5	0.5	5	9	10	10	10	10	10	10	10	10	10	10	10	10	8	6	4
Kinder 1	7	4	2	0.5	0.8	0.5	0.5	4	9	10	10	10	10	10	10	10	10	10	10	10	10	8	6	4
Greens Bayou	7	2	2	2	1	0.5	0.5	2	7	10	10	10	10	10	10	10	10	10	10	10	10	8	6	4
Shell Crude	7	2	2	2	1	0.5	0.5	2	7	10	10	10	10	10	10	10	10	10	10	10	10	6	6	4
Lynchburg Ferries	7	1	1	2	1	0.5	0.5	2	6	10	10	10	10	10	10	10	10	10	10	10	10	8	6	4
Exxon 3	4	0.7	1	2	1	0.5	0.5	2	6	10	10	10	10	10	10	10	10	10	10	10	9	6	5	4
Morgans Point	0.5	0.5	1	2	0.8	0.3	0.3	0.5	4	6	10	10	10	10	10	10	10	10	10	10	9	6	5	4
75/76	0.5	0.5	1	0.2	0.3	0.3	0.3	0.3	0.3	1	2	1	1	3	8	8	8	7	4	0.2	0.2	0.2	0.2	0.2
63/64	0.5	0.7	1	0.2	0.3	0.3	0.3	0.3	0.3	1	2	1	1	5	7	7	6	6	2	0.2	0.2	0.2	0.2	0.2
51/52	3	5	3	1	0.8	0.3	0.3	0.3	0.3	4	0.5	3	4	6	5	4	4	4	0.2	0.2	0.2	0.2	0.2	0.2
37/38	3	9	3	1	0.8	0.3	0.3	0.3	0.3	4	10	9	7	7	4	2	2	2	0.2	0.2	0.2	0.2	0.2	0.2
25/26	3	9	3	1	0.8	0.3	0.3	0.3	0.3	9	10	9	7	7	1	1	1	1	0.2	0.2	0.2	0.2	0.2	0.2
11/12	3	7	3	1	0.8	0.3	0.3	0.3	0.3	4	4	4	3	2	0.2	0.2	0.2	0.2	0	0.2	0.2	0.2	0.2	0.2
1 & 2 Bravo	4	6	3	1	2	0.5	0.3	0.5	1	1	2	2	1	2	0.2	0.2	0.2	0	0	0.2	4	1	0.2	0.2

NOTE: This is automated data that may/may not agree with the official BAM thinking that's found on the daily slides or special visibility report slides. This data should be used as a guide only

Houston Pilots Wind Chart



Forecast Confidence



Sustained wind 13 Knots
Gusts 18 Knots
Wind from the N

Example

WS: 13
G:18
N

Time Knots	Fri 12am	Fri 1am	Fri 2am	Fri 3am	Fri 4am	Fri 5am	Fri 6am	Fri 7am	Fri 8am	Fri 9am	Fri 10am	Fri 11am	Fri 12pm	Fri 1pm	Fri 2pm	Fri 3pm	Fri 4pm	Fri 5pm	Fri 6pm	Fri 7pm	Fri 8pm	Fri 9pm	Fri 10pm	Fri 11pm
610 Bridge	5	5	5	5	5	5	5	5	6	7	8	9	9	10	9	9	9	8	7	6	5	5	5	5
	10	10	12	11	10	9	9	9	12	15	16	18	20	20	20	20	19	17	13	12	11	10	9	9
	SSE	SSE	S	S	S	S	S	S	S	S	S	S	S	S	S	S	S	S	S	SSE	SSE	SSE	SSE	
Kinder 1	5	5	5	5	5	5	5	5	6	7	8	9	9	10	9	9	9	8	7	6	5	5	5	4
	10	11	12	11	10	9	9	9	12	15	16	18	20	20	20	19	19	16	13	11	11	9	9	9
	SSE	SSE	SSE	S	S	S	S	S	S	S	S	S	S	S	S	S	S	S	S	SSE	SSE	SSE	SSE	SSE
Greens Bayou	5	5	5	5	5	4	5	5	5	7	7	8	9	9	9	9	9	8	7	6	5	5	4	5
	10	10	11	11	9	8	9	9	11	14	14	16	18	19	19	19	18	16	13	12	11	10	8	9
	SSE	SSE	SSE	S	S	S	S	S	S	S	S	S	S	S	S	S	S	S	S	SSE	SSE	SSE	SSE	SSE
Shell Crude	5	5	5	5	5	4	5	5	5	7	7	8	9	9	9	9	9	8	7	6	5	5	4	5
	10	10	11	11	9	9	9	10	11	14	15	16	18	19	19	19	18	15	13	12	10	9	8	9
	SSE	SSE	SSE	S	S	S	S	S	S	S	S	S	S	S	S	S	S	S	S	SSE	SSE	SSE	SSE	SSE
Lynchburg Ferries	5	5	5	5	5	4	4	4	5	7	7	8	9	9	9	9	9	8	6	5	5	5	4	4
	9	9	11	11	10	8	8	8	11	14	15	15	17	18	19	18	18	15	13	11	9	8	8	8
	SSE	SSE	SSE	SSE	SSE	SSE	S	S	S	S	S	S	S	S	S	S	S	S	SSE	SSE	SSE	SSE	SSE	SSE
Exxon 3	5	6	7	7	6	6	5	5	7	7	8	9	9	9	9	9	9	9	8	7	7	7	6	5
	10	11	12	12	11	11	10	9	12	13	15	16	18	18	19	18	18	16	13	11	10	10	10	9
	SSE	SSE	SSE	S	S	S	S	S	S	SSE	S	S	S	S	S	SSE	SSE	SSE	SSE	SSE	SSE	SSE	SSE	SSE
Morgans Point	5	6	7	7	7	6	5	5	7	7	7	8	9	9	9	9	10	9	8	7	7	6	5	5
	10	10	11	11	10	10	10	9	11	13	14	16	17	18	19	19	18	16	13	11	10	9	9	8
	SSE	SSE	SSE	S	S	SSE	S	S	S	S	S	SSE	S	SSE	S	S	SSE	SSE	SSE	SSE	SSE	SSE	SSE	SSE
75/76	8	9	9	9	9	9	8	9	9	9	9	9	9	11	11	12	13	12	11	10	9	8	8	8
	12	13	14	13	13	13	12	13	13	13	15	17	18	18	20	20	20	18	17	15	13	12	12	12
	SSE	SSE	SSE	S	S	S	S	S	S	S	SSE	SSE	SSE	SSE	SSE	SSE	SSE	SSE	SSE	SSE	SSE	SSE	SSE	SSE
63/64	7	8	9	8	9	9	7	8	9	9	9	9	9	10	11	11	11	11	10	9	9	7	7	7
	11	12	13	12	13	13	11	12	13	13	15	16	17	19	19	18	18	16	15	13	13	11	11	11
	SSE	SSE	SSE	S	S	S	S	S	S	S	S	S	SSE	SSE	SSE	S	SSE	SSE	SSE	SSE	SSE	SSE	SSE	SSE
51/52	7	7	8	8	9	9	8	8	8	8	9	9	9	9	9	9	9	9	9	7	7	7	7	7
	11	11	12	12	13	13	12	12	12	13	14	16	17	17	16	17	15	14	13	11	10	9	10	10
	SSE	SSE	SSE	SSE	S	S	S	S	S	S	S	S	S	S	S	SSE	SSE	SSE	SSE	SSE	SSE	SE	SSE	SSE
37/38	7	7	8	9	9	9	8	9	8	8	9	9	9	9	9	9	9	9	8	7	6	6	7	6
	10	11	12	13	13	13	12	13	13	13	14	16	17	16	16	16	14	13	12	10	9	9	9	9
	SSE	SSE	SSE	SSE	S	S	S	S	S	S	S	S	S	S	S	SSE	SSE	SSE	SSE	SSE	SSE	SE	SSE	SSE
25/26	7	7	7	9	9	8	8	9	9	9	9	10	10	9	9	9	9	9	7	7	6	6	6	6
	11	11	11	13	13	12	12	13	13	14	15	16	17	16	15	14	13	13	11	10	9	8	9	8
	SSE	SSE	SSE	SSE	S	S	S	S	S	S	S	S	S	S	S	SSE	SSE	SSE	SSE	SSE	SE	SE	SE	SSE
11/12	7	7	7	7	7	7	7	7	7	8	9	9	9	9	9	9	8	7	6	5	5	5	5	5
	11	11	12	11	12	12	12	13	13	13	15	16	16	15	14	13	12	10	10	9	8	8	9	8
	SSE	SSE	SSE	SSE	S	S	S	S	S	S	S	S	S	S	S	S	SSE	SSE	SSE	SE	SE	SE	SE	SSE
1 & 2 Bravo	9	9	9	11	10	11	10	9	9	9	9	9	9	9	8	8	8	9	7	8	7	7	7	8
	13	13	14	15	15	16	15	15	14	15	16	16	15	13	13	13	13	13	11	12	11	11	11	12
	SSE	SSE	SSE	SSE	S	S	S	S	S	S	S	S	SSE	SSE	SSE	SSE	SSE	SSE	SE	SE	SE	SE	SE	SE

NOTE: This is automated data that may/may not agree with the official BAM thinking that's found on the daily slides or special visibility report slides. This data should be used as a guide only

Houston Pilots: Fri. 2/9/2024



Forecast Discussion

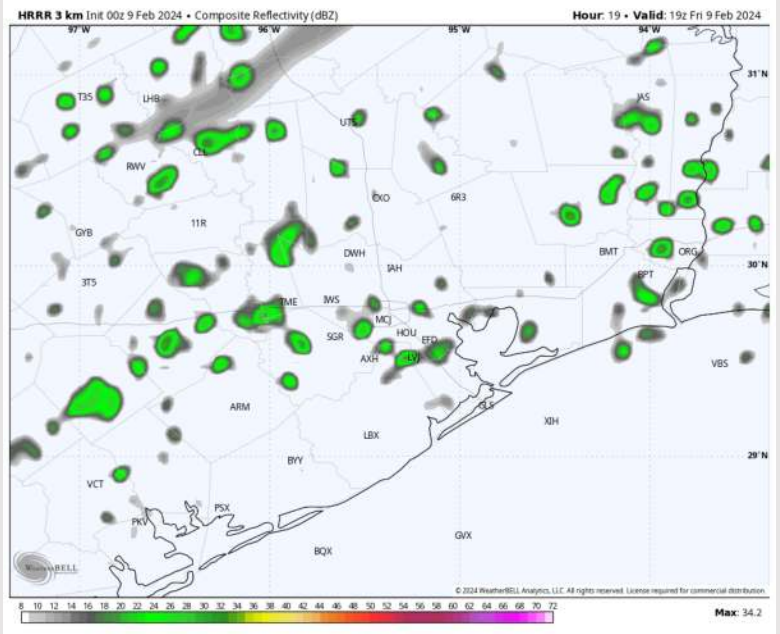
Precip: Favoring drizzle to be spotty in nature through the early AM hours. Light showers to begin to mix in after 7AM and will continue to be possible (40%) for the remainder of the day. There is potential for light/moderate showers after 4PM.

Wind: Winds will remain out of the S / SE. **N Morgan's Point:** Winds to begin at 3 - 8 kts through 11AM before increasing to 7 - 11 kts for the rest of the day. **S of Morgan's Point:** Winds at 7-12 kts for the entire day. **Gusts of 20 - 25 kts possible for all stations (greatest risk N of 51/52) during the AM hours through 4PM.**

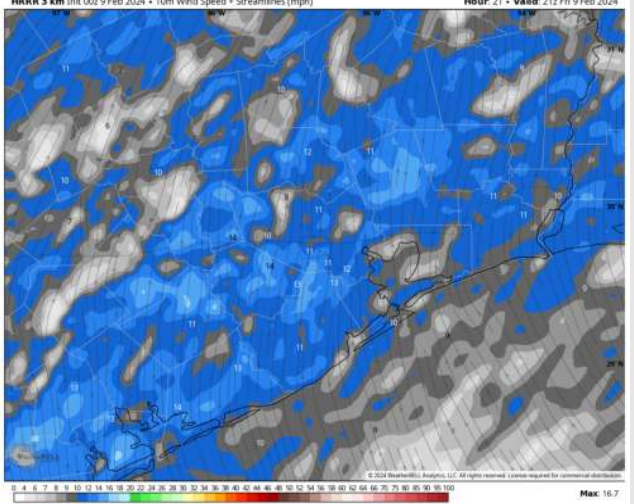
High Temps: **N of Morgan's Point:** Mid 70s F. **S of Morgan's Point:** Mid 60s.

Visibility: Keeping an eye on at least patchy sea fog potential through 10AM-CT. Coverage may become widespread if drizzle / light rain coverage is more limited. **See visibility slide for more details.**

Precip Image: 1 PM CT

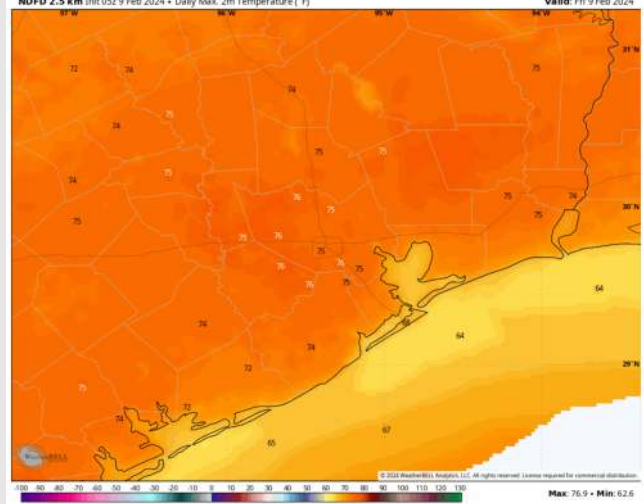


HRRR 3 km Init 00z 9 Feb 2024 • 10m Wind Speed • Streamlines (mph) Hour: 21 • Valid: 21z Fri 9 Feb 2024



Wind Speed:
3 PM CT

NDFD 2.5 km Init 05z 9 Feb 2024 • Daily Max. 2m Temperature (°F) Valid: Fri 9 Feb 2024



High Temps
Today

Houston Pilots: Sat. 2/10/2024



Forecast Discussion

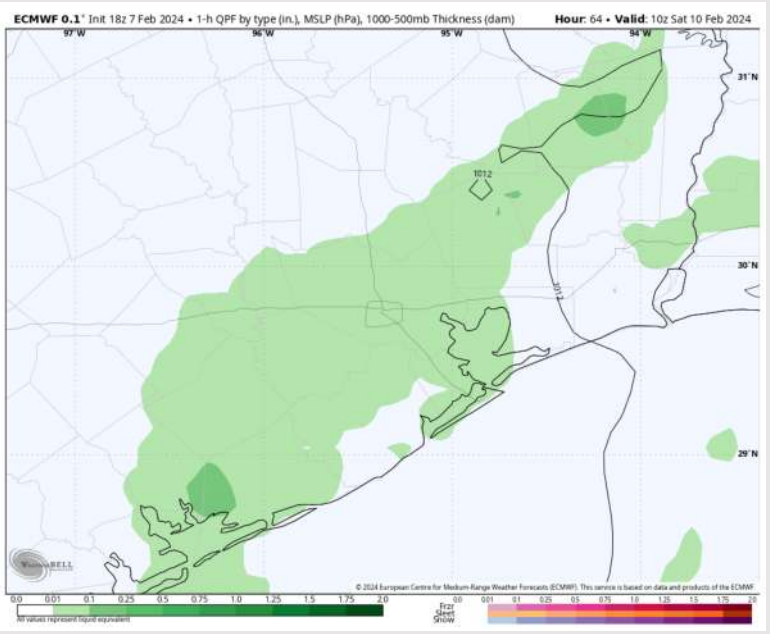
Precip: Light Rain risks will be ongoing during the morning hours (40%) with shower coverage gradually tapering off by 11AM.

Wind: Winds will start out and remain southerly before becoming southwesterly after 8PM. **N of Morgan's Point:** Winds will start at 7 - 10 kts before increasing to 9 - 13 kts after 10AM. **S of Morgan's Point:** Winds will remain at 13 - 17 kts for the entire day. **Gusts of 18 - 23 kts will be possible at all stations after 10AM.**

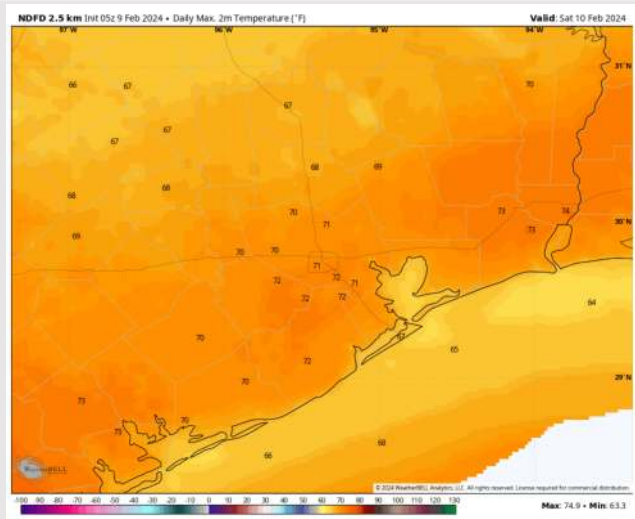
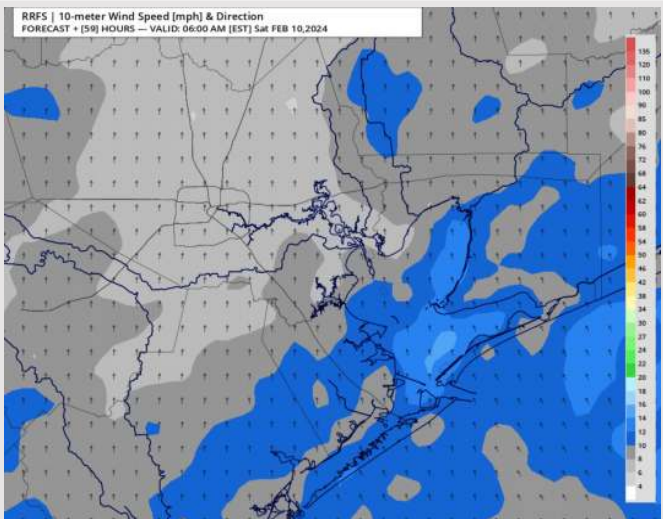
High Temps: **N of Morgan's Point:** Low 70 F. **S of Morgan's Point:** Mid 60s F

Visibility: Monitoring Patchy Sea Fog Risks for the AM Hours.

Precip Image: 4 AM CT



Wind Speed:
5 AM CT



High Temps
Saturday

Houston Pilots: Sun. 2/11/2024



Forecast Discussion

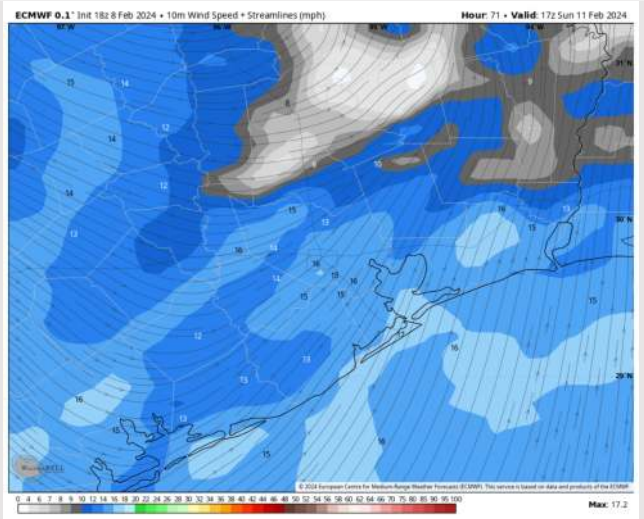
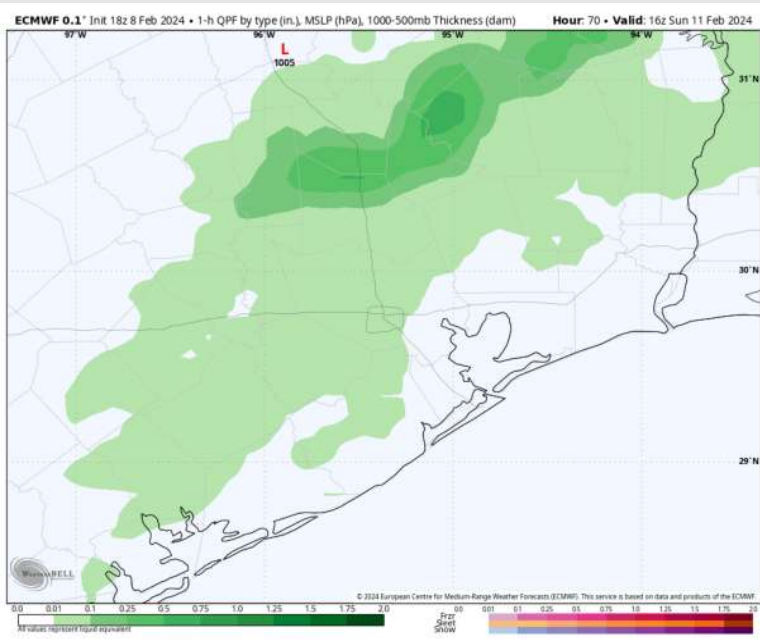
Precip: Favoring light hit/miss drizzle (10% to hang around through ~10 AM. Chances will then increase after 10 PM as scattered moderate to heavy showers enter from the NW in association with a passing front. These scattered showers will linger through 3 PM.

Wind: Winds out of the SSE will veer out of the NE by 2 PM. **N Morgan's Point:** Winds will be at 3-8 kts until 8 AM-CT before increasing to 7-12 kts for the remainder of the day. **S of Morgan's Point:** Winds at 3-8 kts will gradually increase to 10-15 kts by 9 AM, remaining at that speed throughout the day. **Wind gusts of 25-30 kts possible for all stations after 10 AM.**

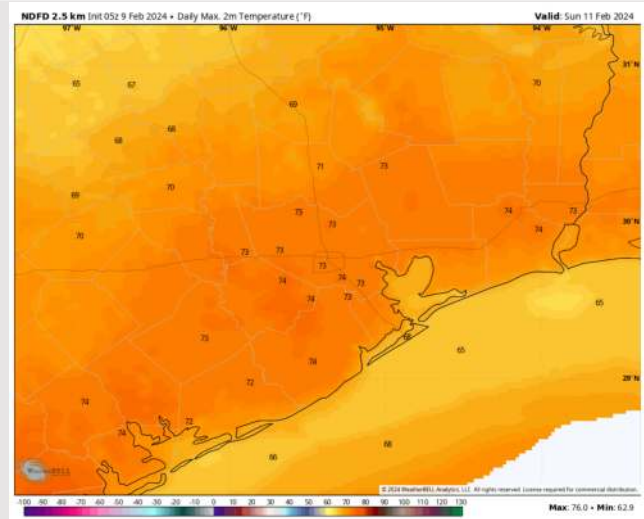
High Temps: **N of Morgan's Point:** Mid 70s F. **S of Morgan's Point:** Mid 60s.

Visibility: As a front passes through SUN AM, moderate to at times heavy rain will be able to create reduced visibilities along with patchy fog mixed in towards the coast.

Precip Image: 10 AM CT



Wind Speed:
11 AM CT

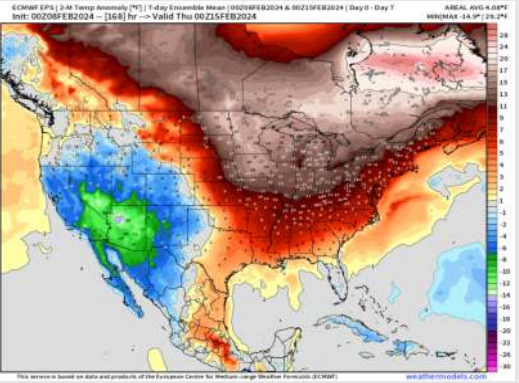


High Temps
Sunday

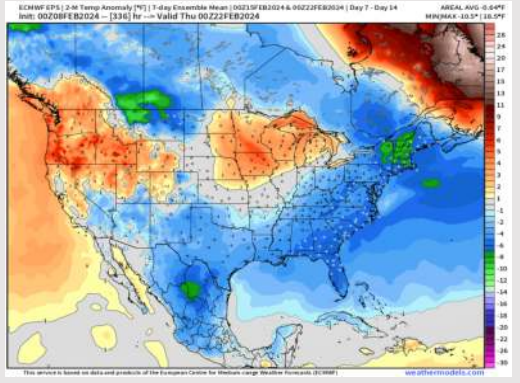
Houston Pilots: 2/9/24



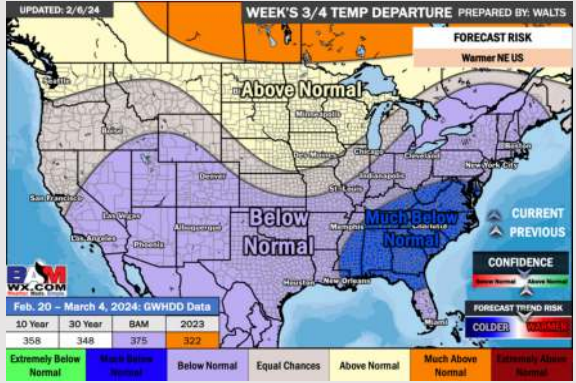
Next 7 Day Temperature Departure



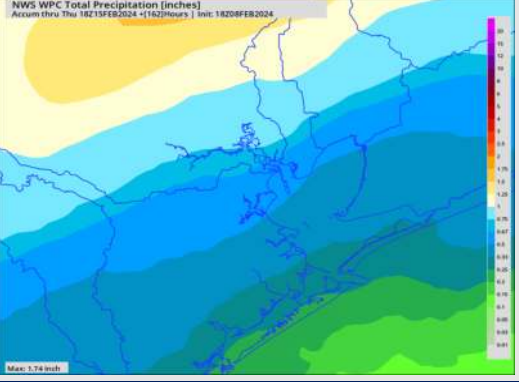
8-14 Day Temperature Departure



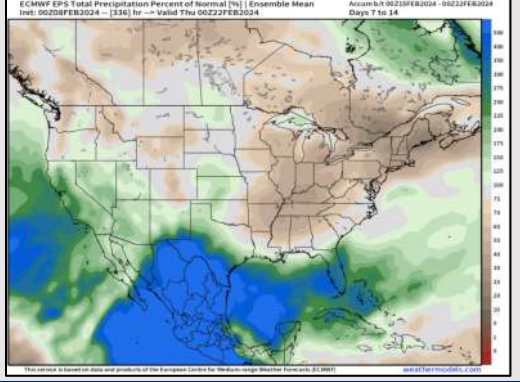
15-30 Day Temperature Departure



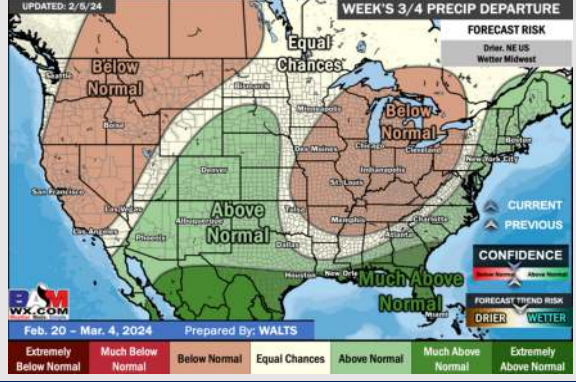
Next 7 Day Total Precipitation



8-14 Day % of Average Precip.



15-30 Day % of Average Precip.



- A weak front is pressing through today bringing light rain. Following this front will be a more active weekend. Above normal temperatures favored for the week ahead.
- Slightly above normal precipitation chances are at play during the week 2 timeframe. Temps expected to be below normal.
- Below normal temperatures and much above normal chances for precipitation are favored in the weeks 3/4 timeframe.