

# Houston Pilots Forecast Package



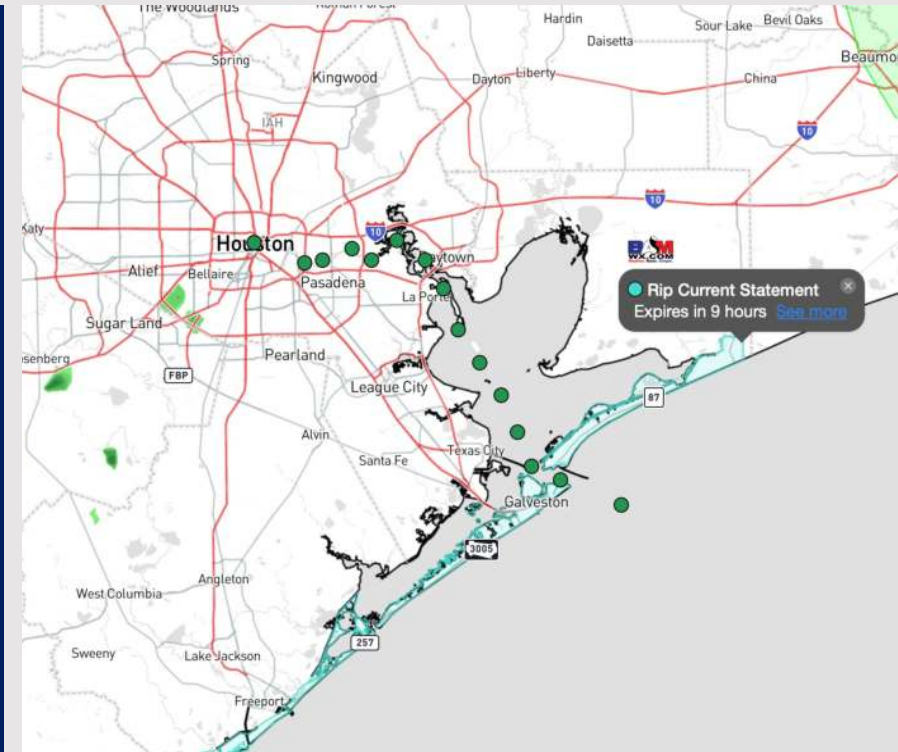
Updated: 1:00 PM CT

Thursday, February 8, 2024

Forecaster: Alyssa Elliott

## Weather Headlines

- Drizzle and scattered showers will begin to work into the area, with chances continuing through start of the weekend.
- Gusts of 20 - 25 mph will remain in the forecast through the end of the week.
- Increasing patchy sea fog risks will be in play as early as this evening with the risk continuing off and on into the weekend.



**Radar/NWS Alerts: 1:00 PM CT**



As always, please do not hesitate to reach out to us with any forecast questions via the chat option on Clarity or our on-call number, **(317)-560-8122** press 1 for forecast questions.

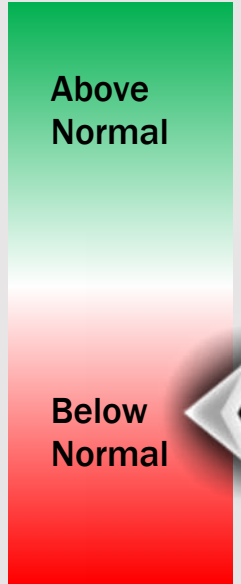
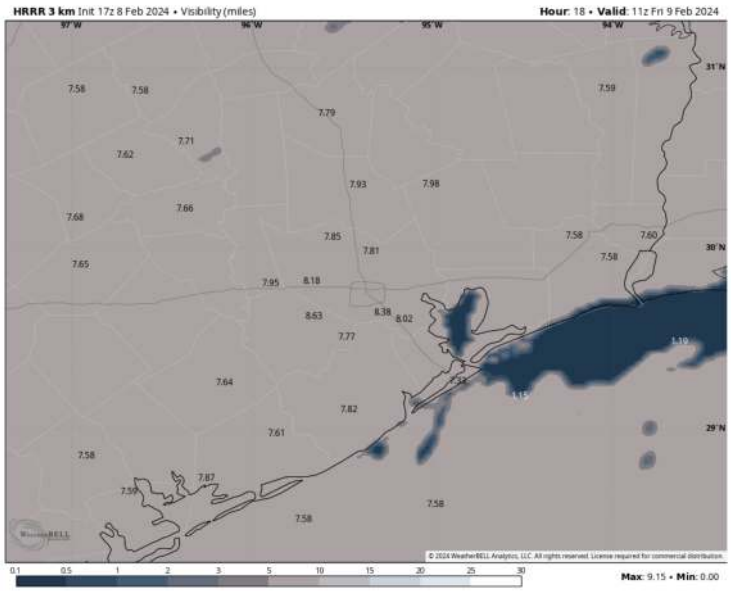
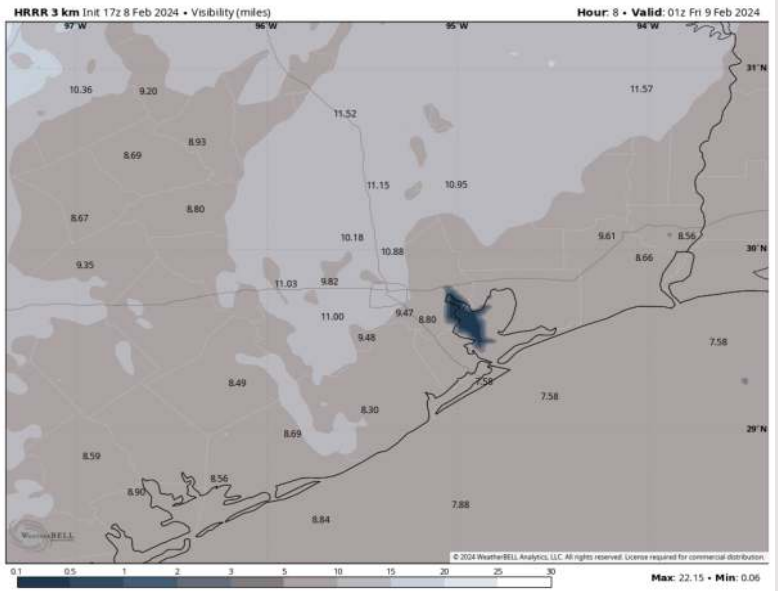
# Houston Pilots Visibility Report



## 7 PM CT THU VISIBILITY

## 5 AM CT FRI VISIBILITY

## Confidence



TIMEFRAME DISCUSSED	THREAT
6 PM THU – 9 AM FRI	Medium

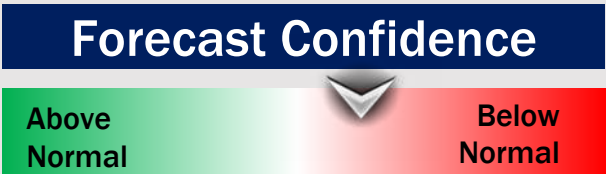
- There is low confidence regarding the development of patchy fog Thursday evening through Friday morning. Patchy drizzle / showers and SE winds may encourage hazy conditions this evening with a risk for patchy fog to develop after midnight.
- **North of Morgan's Point:** Not anticipating much of a fog risk for stations N of Morgan's Point as better potential remains within Galv. Bay. That being said, conditions may become hazy at times as spotty light precip moves through the area, possibly reducing visibility to 2 – 4 miles.
- **South of Morgan's Point:** Moisture from spotty drizzle and showers, along with SE winds, will bring patchy fog development near Morgan's Point and within the N. portions of the bay as early as 6 PM, reducing visibility to 2 - 4 miles. Between 12 – 3 AM-CT, there may be slight improvement in visibility, however after 3 AM, anticipating this patchy / patchy dense fog will build back in for stations S. of Morgan's Point, likely reducing visibility to less than 1 mile. Anticipating fog to clear up by 9 AM-CT.

# Houston Pilots Extended Range Visibility Report



## Sunday 2/11/24

As a front passes through SUN AM, moderate to at times heavy rain will be able to create reduced visibilities along with patchy fog mixed in towards the coast.



## Tuesday 2/13/24

Not favoring fog concerns at this time.



## Monday 2/12/24

Not favoring fog concerns at this time.



## Chance for Fog

Sunday AM	Possible
Sunday PM	Unlikely
Monday AM	Unlikely
Monday PM	Unlikely
Tuesday AM	Unlikely
Tuesday PM	Unlikely

# Houston Pilots Visibility Chart (miles)



## Forecast Confidence



Time	Thu 1pm	Thu 2pm	Thu 3pm	Thu 4pm	Thu 5pm	Thu 6pm	Thu 7pm	Thu 8pm	Thu 9pm	Thu 10pm	Thu 11pm	Fri 12am	Fri 1am	Fri 2am	Fri 3am	Fri 4am	Fri 5am	Fri 6am	Fri 7am	Fri 8am	Fri 9am	Fri 10am	Fri 11am	Fri 12pm
610 Bridge	10	10	10	10	10	10	10	10	10	10	10	10	10	10	7	7	8	8	6	5	8	10	10	10
Kinder 1	10	10	10	10	10	10	10	10	10	10	10	10	10	10	7	7	8	6	6	5	8	10	10	10
Greens Bayou	10	10	10	10	10	10	10	10	10	10	10	10	10	9	6	7	8	6	5	5	8	10	10	10
Shell Crude	10	10	10	10	10	10	10	10	10	10	10	10	10	9	6	6	6	6	5	5	8	10	10	10
Lynchburg Ferries	10	10	10	10	10	10	10	10	10	10	10	10	10	9	6	6	6	6	5	5	8	10	10	10
Exxon 3	10	10	10	10	10	10	10	10	10	10	10	10	10	9	6	6	6	6	5	4	8	10	10	10
Morgans Point	10	10	10	10	10	10	10	10	10	10	10	10	10	9	6	6	6	6	5	4	8	10	10	10
75/76	10	10	10	10	10	10	10	10	10	10	10	10	10	9	8	7	5	5	5	5	8	7	9	9
63/64	10	10	10	10	10	10	10	10	10	10	10	10	10	9	8	6	4	4	5	5	8	8	9	9
51/52	10	10	10	10	10	10	10	10	10	10	10	10	10	9	7	4	4	4	4	4	8	8	9	9
37/38	10	10	10	10	10	10	10	10	10	10	10	10	10	9	6	4	2	2	2	4	8	8	9	9
25/26	10	10	10	10	10	10	10	10	10	10	10	10	10	9	6	4	2	2	2	2	8	8	8	9
11/12	10	10	10	10	10	10	10	10	10	10	10	10	10	9	5	2	1	1	1	2	8	8	8	9
1 & 2 Bravo	10	10	10	10	10	10	10	10	9	9	10	7	7	7	7	2	0.2	0.2	0.2	4	5	8	7	9

**NOTE: This is automated data that may/may not agree with the official BAM thinking that's found on the daily slides or special visibility report slides. This data should be used as a guide only**

# Houston Pilots Wind Chart



## Forecast Confidence



Sustained wind 13 Knots  
Gusts 18 Knots  
Wind from the N

## Example

WS: 13  
G:18  
N

Time Knots	Thu 1pm	Thu 2pm	Thu 3pm	Thu 4pm	Thu 5pm	Thu 6pm	Thu 7pm	Thu 8pm	Thu 9pm	Thu 10pm	Thu 11pm	Fri 12am	Fri 1am	Fri 2am	Fri 3am	Fri 4am	Fri 5am	Fri 6am	Fri 7am	Fri 8am	Fri 9am	Fri 10am	Fri 11am	Fri 12pm
610 Bridge	8 16 S	8 16 S	8 16 S	8 16 S	7 14 S	6 13 S	5 12 SSE	5 11 SSE	5 11 SSE	5 11 SSE	5 11 SSE	5 10 S	5 11 S	5 12 S	5 11 S	5 10 S	5 10 S	6 12 S	6 12 S	8 16 S	9 17 S	9 19 S	11 21 S	
Kinder 1	9 16 S	8 16 S	8 16 S	8 15 S	7 14 S	6 13 SSE	5 12 SSE	5 10 SSE	5 10 SSE	5 11 SSE	5 11 SSE	5 10 S	5 11 S	6 12 S	5 10 S	5 9 S	5 9 S	5 9 S	5 12 S	6 12 S	7 15 S	8 17 S	9 19 S	10 21 S
Greens Bayou	8 16 S	8 16 S	8 16 S	8 15 S	7 13 S	6 12 SSE	5 11 SSE	5 10 SSE	5 10 SSE	5 10 SSE	5 10 SSE	5 10 SSE	5 10 SSE	5 11 S	5 11 S	5 10 S	5 9 S	5 9 S	5 11 S	6 12 S	7 15 S	8 16 S	9 18 S	10 21 S
Shell Crude	8 15 S	8 16 S	8 16 S	8 15 S	7 13 SSE	6 12 SSE	5 11 SSE	5 10 SSE	5 10 SSE	5 10 SSE	5 10 SSE	5 10 S	5 11 SSE	5 11 S	5 11 S	5 11 S	4 9 S	5 10 S	5 11 S	6 13 S	7 15 S	8 16 S	9 18 S	10 20 S
Lynchburg Ferries	8 15 S	8 16 S	8 16 S	8 15 SSE	7 13 SSE	5 12 SSE	5 11 SSE	5 9 SSE	5 9 SSE	5 9 SSE	4 9 SSE	5 9 SSE	5 10 S	5 10 S	5 10 S	5 10 S	4 8 S	5 9 S	5 11 S	5 12 S	7 14 S	8 16 S	9 18 S	10 20 S
Exxon 3	8 15 SSE	8 16 S	9 16 SSE	9 16 SSE	8 14 SSE	7 12 SSE	7 11 SSE	7 10 SSE	7 10 SSE	6 10 SSE	6 10 SSE	6 11 SSE	6 11 SSE	6 11 S	6 11 S	6 10 S	5 11 S	5 11 S	6 11 S	7 12 S	7 13 S	8 15 S	9 18 S	10 20 S
Morgans Point	8 15 SSE	8 15 SSE	9 15 SSE	9 15 SSE	8 13 SSE	7 12 SSE	6 10 SSE	7 9 SSE	6 10 SSE	6 10 SSE	5 10 SSE	5 10 SSE	6 10 S	6 11 S	6 11 S	5 10 S	5 10 S	5 10 S	6 10 S	7 12 S	7 13 S	8 14 S	9 17 S	9 19 S
75/76	9 17 SSE	9 17 SSE	11 17 SSE	11 17 SSE	11 16 SSE	11 15 SSE	9 13 SSE	9 13 SSE	8 12 SSE	8 13 SSE	9 13 SSE	9 13 SSE	9 13 SSE	9 13 SSE	9 13 S	9 13 S	9 13 S	9 12 S	9 13 S	9 14 SSE	9 13 S	10 15 S	10 18 S	11 19 S
63/64	8 16 SSE	9 16 SSE	10 16 SSE	10 16 SSE	10 15 SSE	10 14 SSE	9 13 SSE	9 13 SSE	8 12 SSE	8 12 SSE	8 13 SSE	8 12 SSE	8 12 SSE	8 13 S	8 12 S	8 13 S	8 12 S	8 12 S	8 13 S	9 13 S	9 13 S	10 16 S	10 17 S	10 18 S
51/52	8 15 SSE	9 15 SSE	9 14 SSE	9 14 SSE	9 13 SSE	9 13 SSE	8 12 SSE	7 11 SSE	7 10 SSE	8 12 SSE	8 12 SSE	7 11 SSE	7 12 SSE	7 12 SSE	7 12 S	7 11 S	7 11 S	7 11 S	7 11 S	8 13 S	8 13 S	9 15 S	10 18 S	11 18 S
37/38	9 14 SSE	9 13 SSE	9 14 SSE	9 13 SSE	9 13 SSE	9 13 SSE	7 11 SSE	7 11 SSE	7 10 SSE	7 11 SSE	7 11 SSE	7 11 SSE	7 11 SSE	7 12 SSE	7 11 S	7 12 S	7 12 S	7 12 S	7 12 S	8 13 S	8 14 S	9 15 S	10 17 S	11 18 S
25/26	9 13 SSE	9 13 SSE	9 13 SSE	9 13 SSE	9 12 SSE	8 10 SSE	7 11 SSE	7 11 SSE	7 9 SSE	7 11 SSE	7 11 SSE	7 11 SSE	7 11 SSE	7 12 SSE	7 12 S	7 12 S	7 12 S	7 12 S	7 13 S	8 13 S	8 14 S	9 16 S	10 18 S	11 19 S
11/12	9 13 SSE	9 13 SSE	9 13 SSE	9 13 SSE	7 11 SSE	7 10 SSE	6 9 SSE	6 9 SSE	5 9 SSE	6 11 SSE	6 11 SSE	6 11 SSE	6 11 SSE	6 11 SSE	6 11 S	6 10 S	6 10 S	6 10 S	6 10 S	7 12 S	7 13 S	8 16 S	9 17 S	11 18 S
1 & 2 Bravo	8 13 SSE	9 13 SSE	8 12 SSE	9 13 SSE	8 13 SSE	9 13 SSE	9 13 SSE	8 12 SSE	9 13 SSE	9 13 SSE	9 14 SSE	9 13 SSE	9 13 SSE	9 14 SSE	9 14 S	9 13 S	9 14 S	9 14 S	10 15 S	10 14 S	10 16 S	10 16 S	10 17 S	10 16 S

NOTE: This is automated data that may/may not agree with the official BAM thinking that's found on the daily slides or special visibility report slides. This data should be used as a guide only

# Houston Pilots: Thu. 2/8/2024



## Forecast Discussion

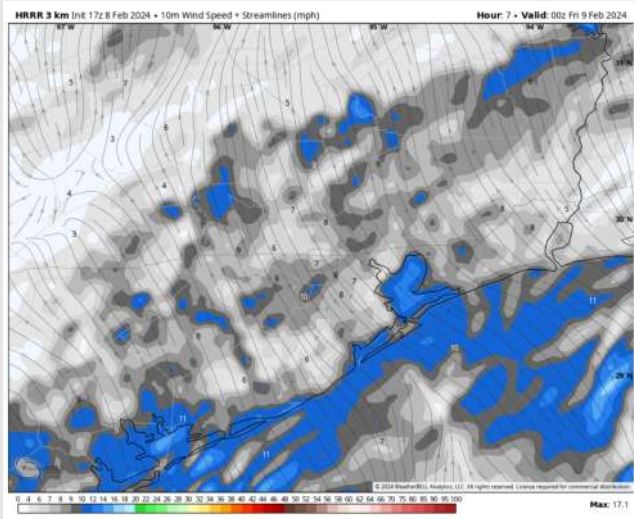
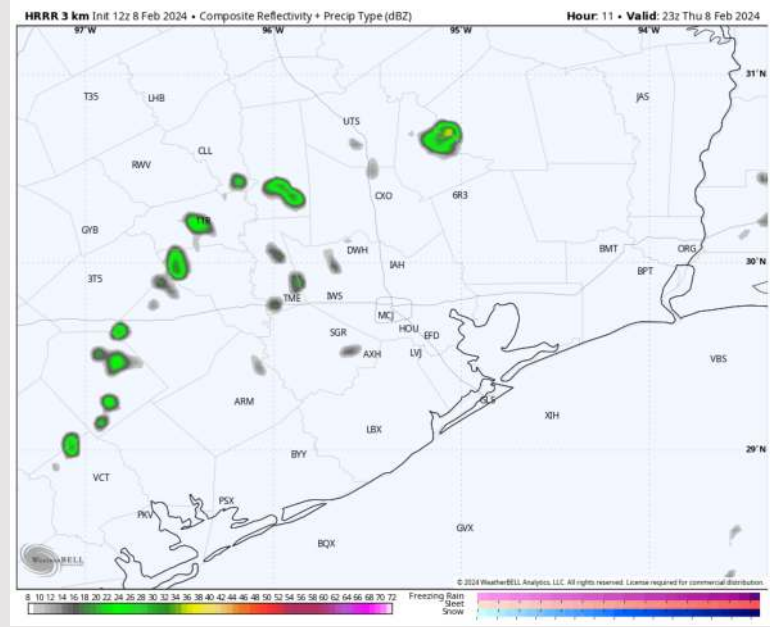
**Precip:** Favoring light hit/miss showers (30%) and drizzle to hang around through ~6 PM. Chances will decrease after 6 PM through the rest of the PM to 10% for a pocket of drizzle.

**Wind:** Winds will continue out of the SE for the rest of the evening. **N Morgan's Point:** Winds will be at 8 – 13 kts until ~7-8 PM-Ct before gradually decreasing to 3 – 8 for the rest of the night. **S of Morgan's Point:** Winds will remain at 8 – 13 kts for the remainder of the afternoon and evening. **Gusts up to 20 kts will be possible for all stations throughout the PM.**

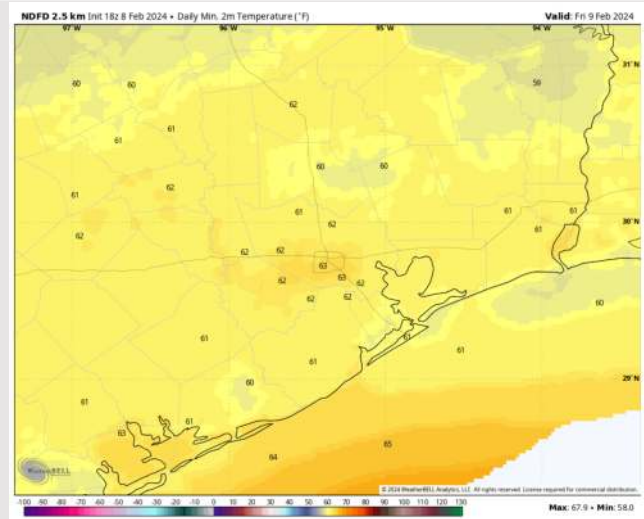
**Low Temps:** **N of Morgan's Point:** Low 60s F **S of Morgan's Point:** Upper 50s to Low 60sF.

**Visibility:** Need to watch for patchy fog to begin to develop within the Bay causing hazy conditions as early as 6 PM. Fog potential will increase through the overnight and into Friday morning. See visibility slide for more details.

## Precip Image: 5 PM CT



Wind Speed:  
6 PM CT



Low Temps  
Fri AM

# Houston Pilots: Fri. 2/9/2024

## Forecast Discussion

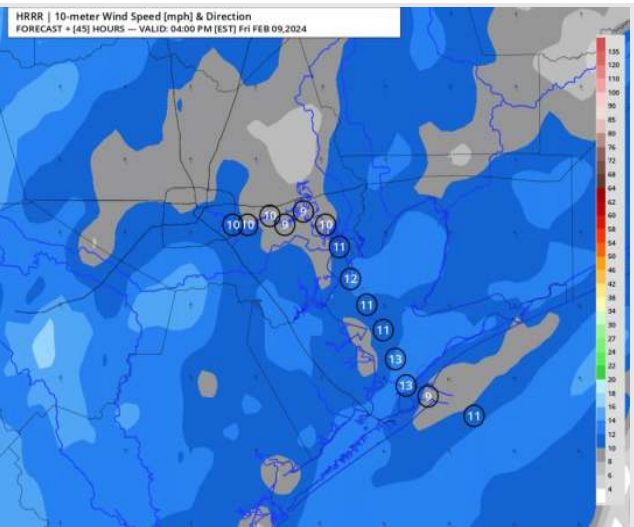
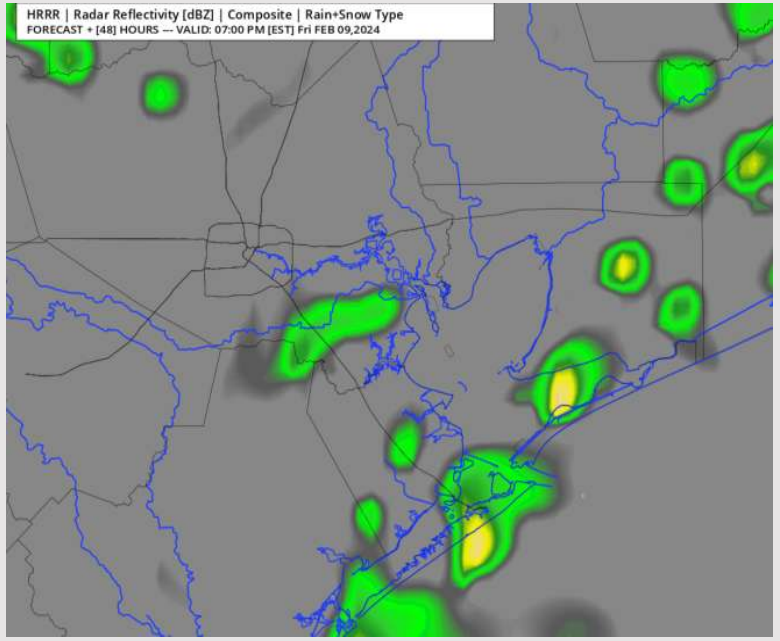
**Precip:** Favoring drizzle to be spotty in nature through the early AM hours. Light showers to begin to mix in after 7AM and will continue to be possible (40%) for the remainder of the day. There is potential for light/moderate showers after 4PM.

**Wind:** Winds will remain out of the S / SE. **N Morgan's Point:** Winds to begin at 3 - 8 kts through 11AM before increasing to 7 - 11 kts for the rest of the day. **S of Morgan's Point:** Winds at 10 -15 kts for the entire day. **Gusts of 20 - 25 kts possible for all stations (greatest risk N of 51/52) during the AM hours through 4PM.**

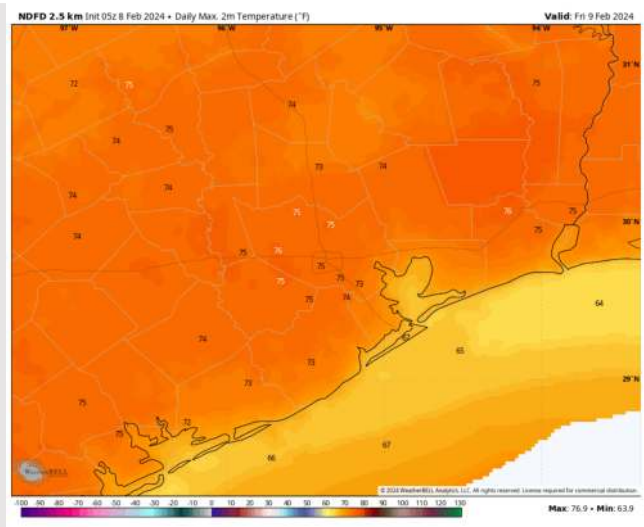
**High Temps:** **N of Morgan's Point:** Mid 70s F. **S of Morgan's Point:** Mid 60s.

**Visibility:** Keeping an eye on at least patchy sea fog potential through 10AM-CT. Coverage may become widespread if drizzle / light rain coverage is more limited. **See visibility slide for more details.**

## Precip Image: 6 PM CT



Wind Speed:  
3 PM CT



High Temps  
Friday

# Houston Pilots: Sat. 2/10/2024



## Forecast Discussion

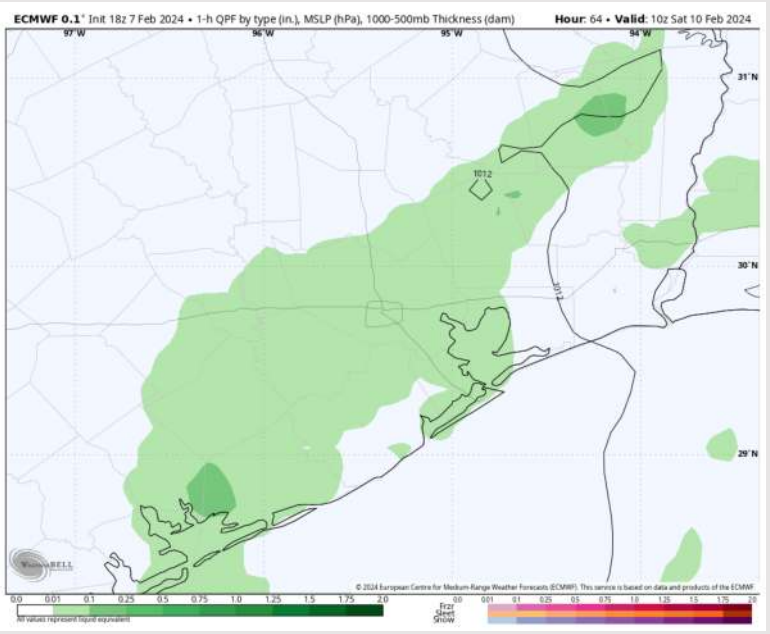
**Precip:** Light Rain risks will be ongoing during the morning hours (40%) with shower coverage gradually tapering off by 11AM.

**Wind:** Winds will start out and remain southerly before becoming southwesterly after 8PM. **N of Morgan's Point:** Winds will start at 7 - 10 kts before increasing to 9 - 13 kts after 10AM. **S of Morgan's Point:** Winds will remain at 13 - 17 kts for the entire day. **Gusts of 18 - 23 kts will be possible at all stations after 10AM.**

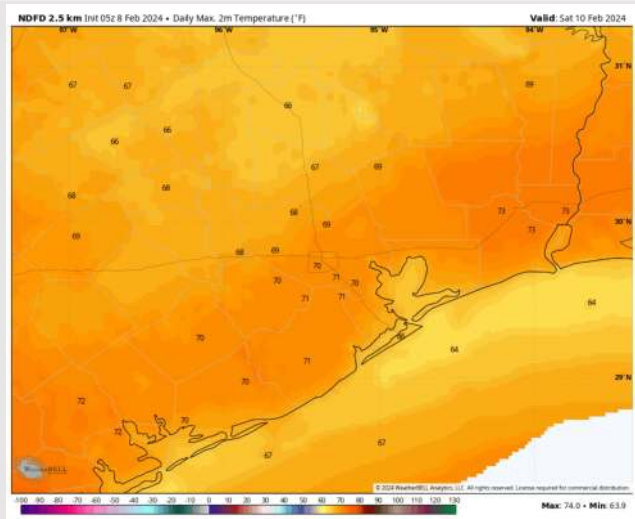
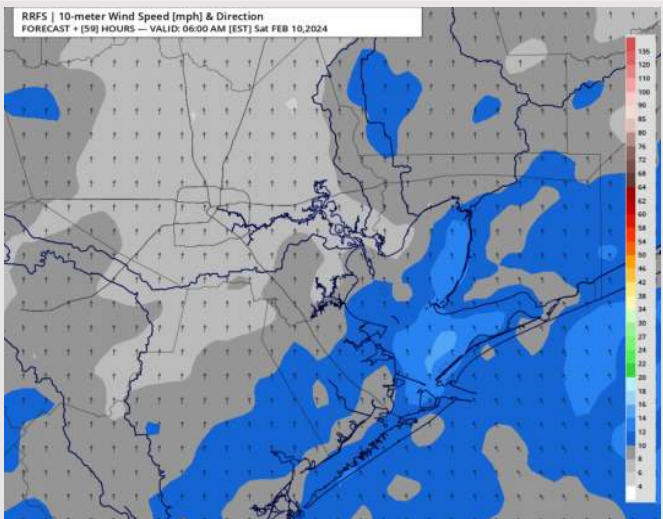
**High Temps:** **N of Morgan's Point:** Low 70 F. **S of Morgan's Point:** Mid 60s F

**Visibility:** Monitoring Patchy Sea Fog Risks for the AM Hours.

## Precip Image: 4 AM CT



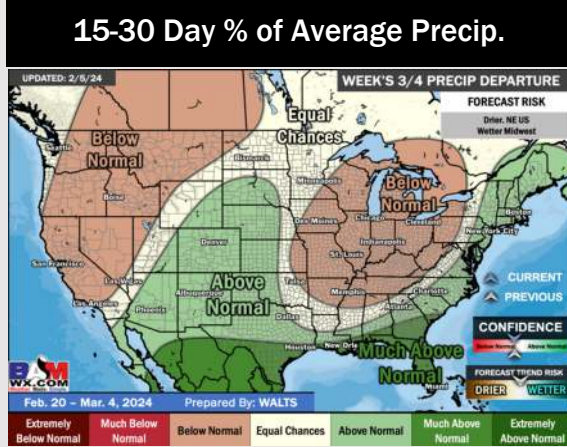
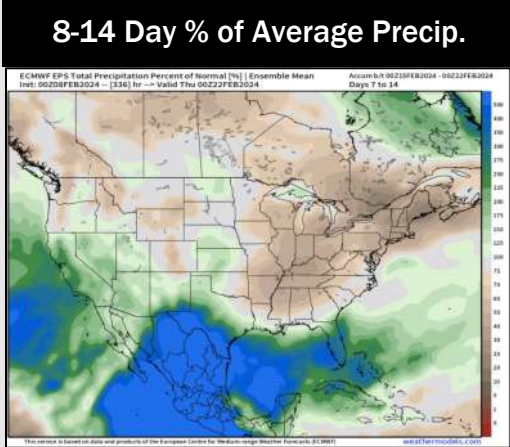
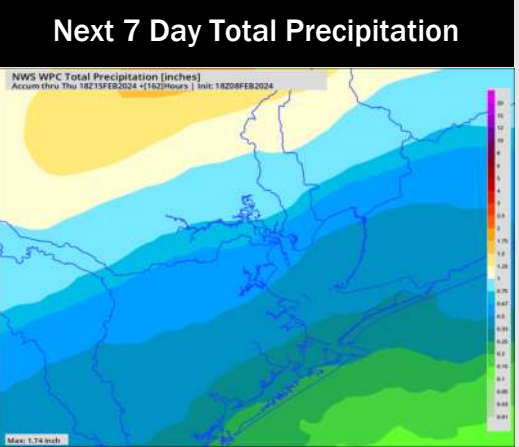
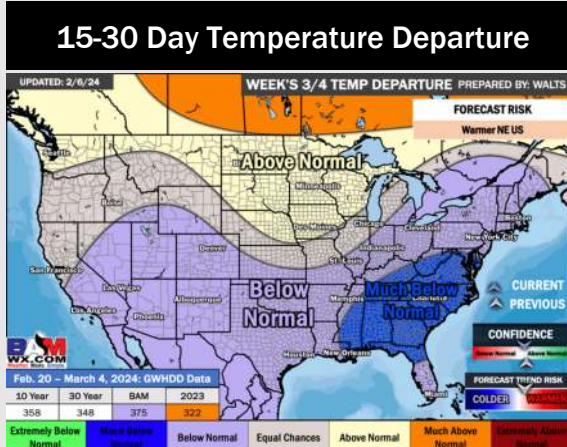
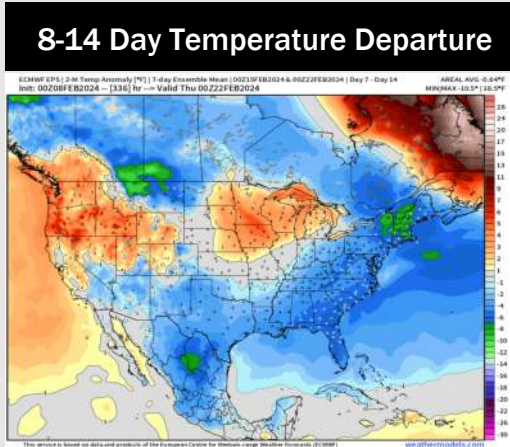
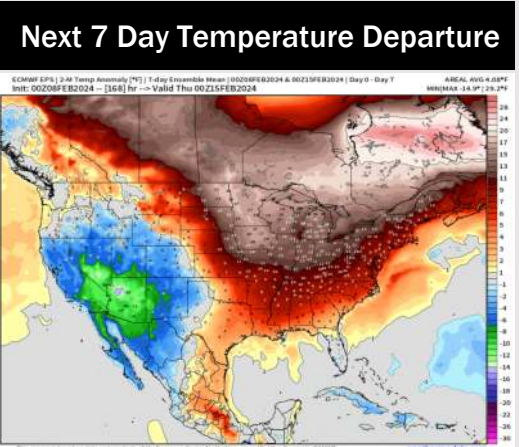
Wind Speed:  
5 AM CT



High Temps  
Saturday



# Houston Pilots: 2/8/24



- A weak front is pressing through today bringing light rain. Following this front will be a more active weekend. Above normal temperatures favored for the week ahead.
- Slightly above normal precipitation chances are at play during the week 2 timeframe. Temps expected to be below normal.
- Below normal temperatures and much above normal chances for precipitation are favored in the weeks 3/4 timeframe.