

# Houston Pilots Forecast Package



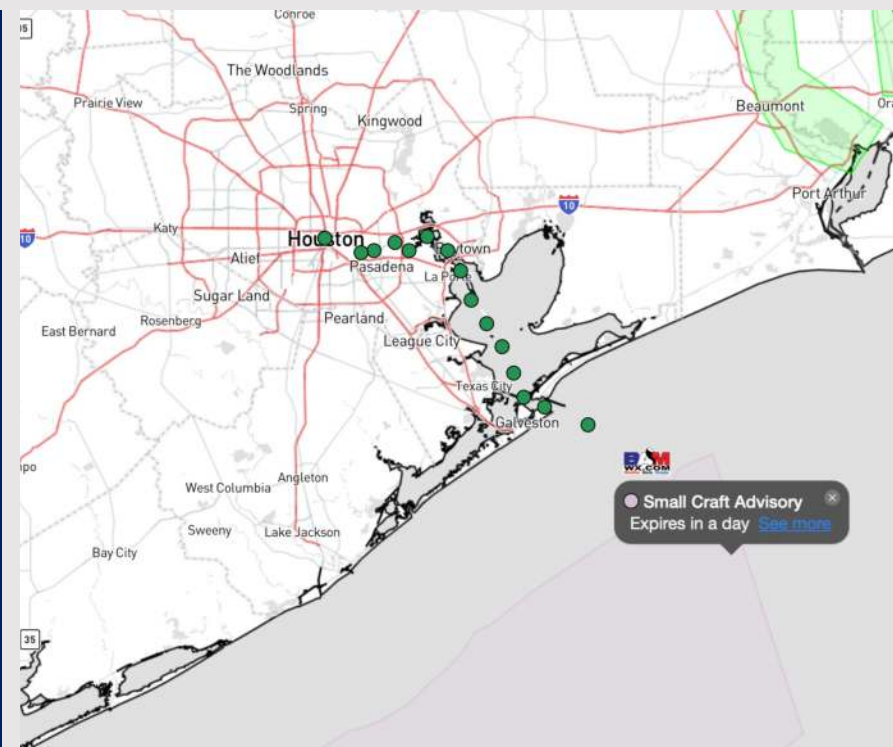
Updated: 12:45 AM CT

Thursday, February 8, 2024

Forecaster: John Kemper

## Weather Headlines

- Drizzle and scattered showers will begin to work into the area, with chances continuing through start of the weekend.
- Gusts of 20 - 25 mph will remain in the forecast through the end of the week.
- Increasing patchy sea fog risks will be in play as we get into Friday morning and the beginning of the weekend.



**Radar/NWS Alerts: 12:20 AM CT**



As always, please do not hesitate to reach out to us with any forecast questions via the chat option on Clarity or our on-call number, **(317)-560-8122** press 1 for forecast questions.

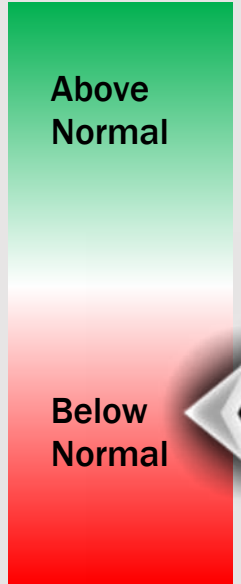
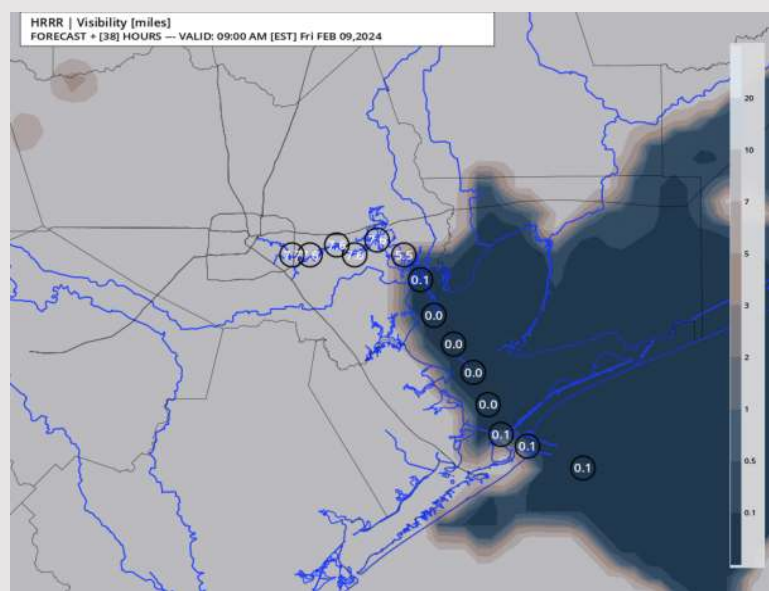
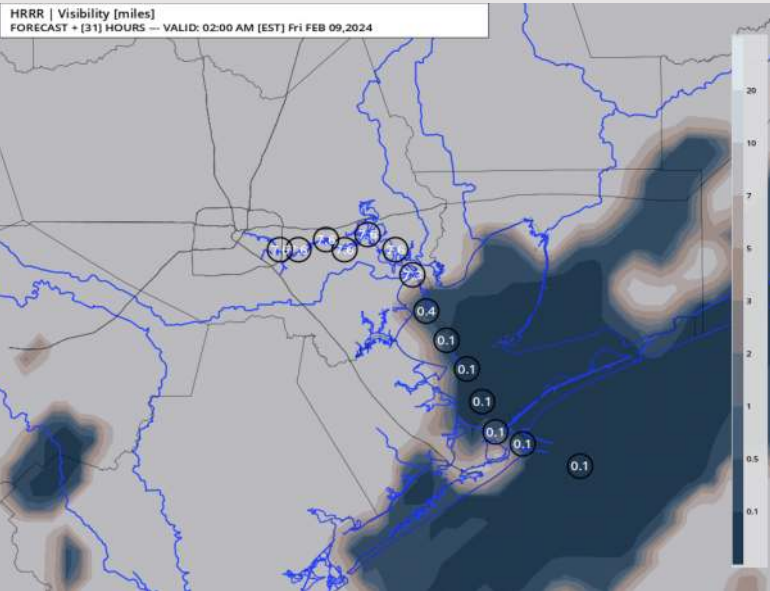
# Houston Pilots Visibility Report



## 1 AM CT FRI VISIBILITY

## 8 AM CT FRI VISIBILITY

## Confidence



TIMEFRAME DISCUSSED	THREAT
11 PM THU - 10 AM FRI	Medium

- Patchy to widespread dense sea fog will be possible from late Thursday Evening through Friday late morning. Visibilities of less than one mile will be likely for stations affected. Confidence remains below normal for this event, with drizzle / light rain showers mixing in during the AM hours and potentially limiting coverage.
- **North of Morgan's Point:** Fog will be patchier in nature and likely will not work into the area until after 5AM CT. Reduced visibilities of less than 1 – 3 miles will be possible, with best localized risks of less than a mile to occur from 7AM – 9AM. The northward extent of sea fog for these stations remains the lowest confidence part of this report.
- **South of Morgan's Point:** Due to consistent flow of winds from the SE settling in around / after 11PM, sea fog will start to work into the area, with visibilities of less than 1 mile to be possible almost immediately. Boarding station and 11/12 will have the best potential to see these risks initially, before fog fully extends across stations S of Morgan's point shortly after midnight. Lower confidence on end time for sea fog.

# Houston Pilots Extended Range Visibility Report



## Sunday 2/11/24

As a front passes through SUN AM, moderate to at times heavy rain will be able to create reduced visibilities along with patchy fog mixed in towards the coast.



## Tuesday 2/13/24

Not favoring fog concerns at this time.



## Monday 2/12/24

Not favoring fog concerns at this time.



## Chance for Fog

Sunday AM	Possible
Sunday PM	Unlikely
Monday AM	Unlikely
Monday PM	Unlikely
Tuesday AM	Unlikely
Tuesday PM	Unlikely

# Houston Pilots Visibility Chart (miles)



## Forecast Confidence



Time	Thu 12am	Thu 1am	Thu 2am	Thu 3am	Thu 4am	Thu 5am	Thu 6am	Thu 7am	Thu 8am	Thu 9am	Thu 10am	Thu 11am	Thu 12pm	Thu 1pm	Thu 2pm	Thu 3pm	Thu 4pm	Thu 5pm	Thu 6pm	Thu 7pm	Thu 8pm	Thu 9pm	Thu 10pm	Thu 11pm
610 Bridge	10	10	10	10	10	10	7	7	7	10	10	10	10	10	10	10	10	10	10	10	10	10	10	10
Kinder 1	10	10	10	10	10	10	7	7	7	10	10	10	10	10	10	10	10	10	10	10	10	10	10	10
Greens Bayou	10	10	10	10	10	9	7	7	7	10	10	10	10	10	10	10	10	10	10	10	10	10	10	10
Shell Crude	10	10	10	10	10	9	7	7	7	10	10	10	10	10	10	10	10	10	10	10	10	10	10	10
Lynchburg Ferries	10	10	10	10	10	9	7	7	7	10	10	10	10	10	10	10	10	10	10	10	10	10	10	10
Exxon 3	10	10	10	10	10	9	7	7	7	10	10	10	10	10	10	10	10	10	10	10	10	10	10	9
Morgans Point	10	10	10	10	10	9	7	7	7	10	10	10	10	10	10	10	10	10	10	10	10	10	10	9
75/76	10	10	10	10	10	10	9	7	6	10	10	10	10	10	10	10	9	9	9	8	8	8	8	8
63/64	10	10	10	10	10	10	9	7	6	10	10	10	10	10	10	9	9	9	9	8	8	8	8	8
51/52	10	10	10	10	10	10	10	9	7	10	10	10	10	10	10	9	9	9	8	8	8	8	8	6
37/38	10	10	10	10	10	10	10	9	7	10	10	10	10	10	10	9	9	9	8	8	8	7	7	5
25/26	10	10	10	10	10	10	10	9	7	10	10	10	10	10	10	9	9	8	8	8	8	7	6	4
11/12	10	10	10	10	10	10	10	9	7	10	10	10	10	10	10	8	8	8	8	8	8	6	6	2
1 & 2 Bravo	10	10	10	10	10	10	10	10	7	10	10	10	10	10	10	8	8	8	8	8	8	7	7	0.3

**NOTE: This is automated data that may/may not agree with the official BAM thinking that's found on the daily slides or special visibility report slides. This data should be used as a guide only**

# Houston Pilots Wind Chart



## Forecast Confidence



## Example

Sustained wind 13 Knots  
Gusts 18 Knots  
Wind from the N

WS: 13  
G:18  
N

Time Knots	Thu 12am	Thu 1am	Thu 2am	Thu 3am	Thu 4am	Thu 5am	Thu 6am	Thu 7am	Thu 8am	Thu 9am	Thu 10am	Thu 11am	Thu 12pm	Thu 1pm	Thu 2pm	Thu 3pm	Thu 4pm	Thu 5pm	Thu 6pm	Thu 7pm	Thu 8pm	Thu 9pm	Thu 10pm	Thu 11pm
610 Bridge	9	7	6	5	4	4	3	4	4	5	7	7	9	9	8	8	8	7	6	5	5	5	5	5
	17	14	12	10	8	7	6	7	9	11	13	14	17	17	16	16	16	13	13	11	11	11	11	10
	SSE	SSE	SSE	SSE	SSE	SE	SE	SE	SSE	SSE	S	S	S	S	S	S	S	SSE	SSE	SSE	SSE	SSE	SSE	SSE
Kinder 1	9	7	6	5	4	3	3	4	4	5	7	7	8	8	8	8	8	7	6	5	5	5	5	5
	17	15	12	10	8	6	6	7	9	12	13	14	17	17	16	16	16	13	13	11	11	11	11	10
	SSE	SSE	SSE	SSE	SSE	SSE	SE	SE	SSE	SSE	S	S	S	S	S	S	S	SSE	SSE	SSE	SSE	SSE	SSE	SSE
Greens Bayou	9	7	6	5	3	3	4	4	4	5	6	7	8	8	8	8	8	7	6	5	5	5	5	5
	17	14	11	9	6	5	6	7	9	11	13	13	16	16	16	16	16	14	12	11	11	10	10	10
	SSE	SSE	SSE	SSE	SE	SE	SE	SE	SE	SSE	SSE	S	S	S	S	S	S	SSE	SSE	SSE	SSE	SSE	SSE	SSE
Shell Crude	9	7	5	5	3	3	3	4	4	5	6	7	8	8	8	8	8	7	6	5	5	5	5	5
	17	14	11	9	7	5	6	7	8	11	13	13	16	16	16	16	16	14	12	11	11	10	10	9
	SSE	SSE	SSE	SSE	SSE	SE	SE	SE	SSE	SSE	S	S	S	S	S	S	S	SSE	SSE	SSE	SSE	SSE	SSE	SSE
Lynchburg Ferries	9	7	6	5	3	3	3	4	4	5	6	7	7	7	8	8	7	7	6	5	5	5	5	5
	17	14	12	9	6	5	6	7	8	11	13	13	15	15	15	16	16	13	11	10	10	9	9	9
	SSE	SSE	SSE	SSE	SSE	SE	SE	SE	SSE	SSE	S	S	S	S	S	S	SSE	SSE	SSE	SSE	SSE	SSE	SSE	SSE
Exxon 3	11	10	9	7	5	5	5	5	6	6	7	7	7	7	8	9	9	9	7	7	7	7	7	6
	17	16	13	12	9	7	6	8	9	10	13	13	15	15	16	16	16	14	13	11	11	10	11	11
	SSE	SSE	SSE	SSE	SSE	SE	SSE	SSE	SSE	SSE	S	SSE	S	SSE	SSE	SSE	SSE	SSE	SSE	SSE	SE	SE	SSE	SSE
Morgans Point	11	10	9	7	5	5	5	5	5	5	7	7	7	7	8	9	9	8	7	7	7	7	7	6
	17	15	13	11	8	6	6	7	9	10	12	13	14	15	15	15	15	13	12	10	10	10	11	11
	SE	SSE	SSE	SSE	SSE	SE	SE	SE	SSE	SSE	SSE	SSE	SSE	SSE	SSE	SSE	SSE	SSE	SSE	SSE	SE	SE	SSE	SSE
75/76	14	13	11	9	7	6	7	8	9	9	9	9	9	9	9	10	11	11	11	10	9	9	9	9
	21	19	15	13	9	9	10	12	13	13	13	14	15	16	17	17	17	16	16	14	14	13	13	13
	SE	SSE	SSE	SSE	SSE	SSE	SE	SSE	SE	SSE	SSE	SSE	SSE	SSE	SSE	SSE	SSE	SSE	SSE	SE	SE	SE	SSE	SSE
63/64	13	12	10	8	6	5	6	7	8	8	9	9	8	9	9	10	11	11	10	9	9	8	9	9
	19	17	14	12	9	8	9	10	12	12	13	14	15	16	16	16	16	15	15	14	13	12	13	13
	SE	SSE	SSE	SSE	SSE	SE	SSE	SE	SSE	SE	SSE	SSE	SSE	SSE	SSE	SSE	SSE	SSE	SSE	SSE	SSE	SSE	SSE	SSE
51/52	11	11	9	8	6	5	5	6	7	7	8	9	9	9	9	9	9	9	9	7	7	7	7	8
	17	16	13	12	9	7	7	9	11	11	12	13	15	15	15	14	14	14	13	13	11	12	12	13
	SSE	SSE	SSE	SSE	S	SSE	SSE	SSE	SSE	SSE	SSE	SSE	SSE	SSE	SSE	SSE	SSE	SSE	SSE	SE	SE	SE	SSE	SSE
37/38	11	11	9	9	6	5	5	6	7	8	8	8	9	9	9	9	9	9	8	7	7	7	7	8
	16	16	13	13	10	7	7	9	11	12	12	13	14	15	14	14	13	13	13	12	11	11	12	12
	SSE	SSE	SSE	SSE	S	S	S	SSE	SSE	SSE	SSE	SSE	SSE	SSE	SSE	SSE	SSE	SSE	SSE	SE	SE	SE	SSE	SSE
25/26	11	11	9	8	6	5	5	7	7	7	8	8	9	9	9	9	9	8	7	7	7	7	7	8
	15	15	13	13	11	8	7	9	10	11	12	13	14	13	13	13	13	13	12	11	11	10	11	12
	SSE	SSE	SSE	SSE	S	S	S	SSE	SSE	SSE	SSE	SSE	SSE	SSE	SSE	SSE	SSE	SSE	SE	SE	SE	SE	SSE	SSE
11/12	9	9	8	7	5	4	4	5	7	7	8	9	9	9	9	9	8	7	7	6	6	5	6	6
	14	14	13	13	11	9	6	8	10	10	12	13	13	13	13	13	12	11	10	10	10	10	11	10
	SSE	SSE	SSE	SSE	S	S	S	SSE	SSE	SSE	SSE	SSE	SSE	SSE	SSE	SSE	SSE	SSE	SE	SE	SE	SSE	SSE	SSE
1 & 2 Bravo	12	13	11	9	7	7	7	7	8	8	9	9	8	8	9	9	9	9	9	9	9	9	9	9
	18	18	17	14	12	11	10	11	12	12	13	13	12	12	13	13	13	13	13	13	13	13	13	14
	SSE	SSE	SSE	SSE	SSE	S	S	S	SSE	SSE	SSE	SSE	SSE	SSE	SE	SSE	SE	SE	SE	SE	SE	SE	SSE	SSE

**NOTE: This is automated data that may/may not agree with the official BAM thinking that's found on the daily slides or special visibility report slides. This data should be used as a guide only**

# Houston Pilots: Thu. 2/8/2024



## Forecast Discussion

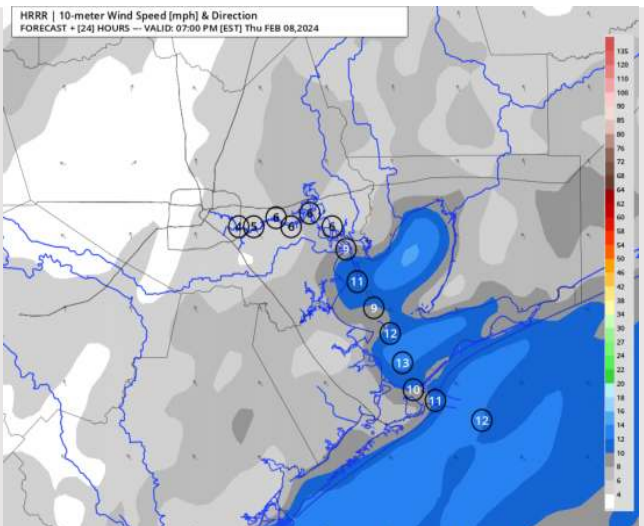
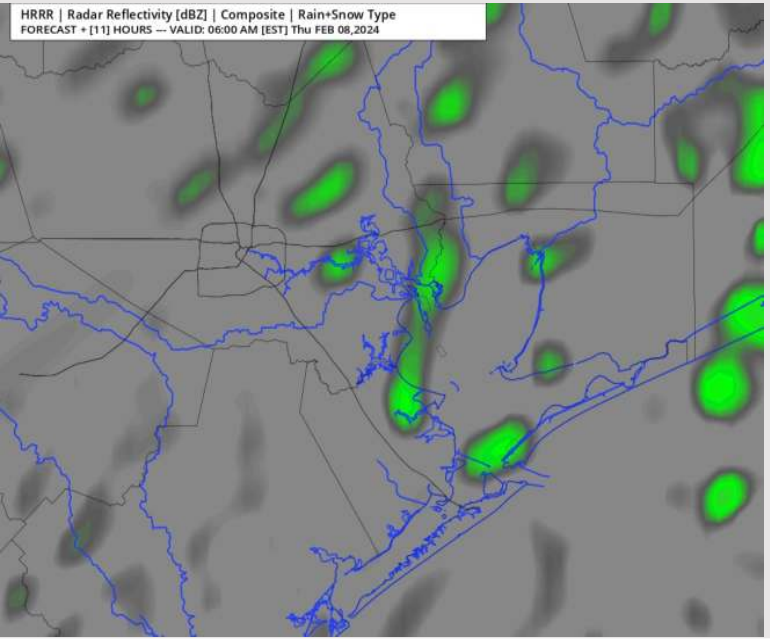
**Precip:** Favoring a few isolated pockets of drizzle through ~5 AM before light hit/miss activity works into the area through ~8 PM. Dry conditions favored for the remainder of the evening.

**Wind:** Winds out of the S will transition to out of the SE by 9 AM. **N Morgan's Point:** Winds decrease to 3-8 kts by 5 AM and remain there through 1 PM. Winds then increase to 9-14 kts through 8 PM before decreasing to 4-9 kts the rest of the day. **S of Morgan's Point:** Winds decrease to 9-14 kts by 6 AM and continue there the rest of the day. **Gusts of up 18-23 kts will be possible through 5 AM-CT. Between 5 AM and 12 PM-CT gusts will calm. After 2 PM, gusts will again pick up towards 13 - 18 kts, then will increase to 18-23 kts after 8 PM.**

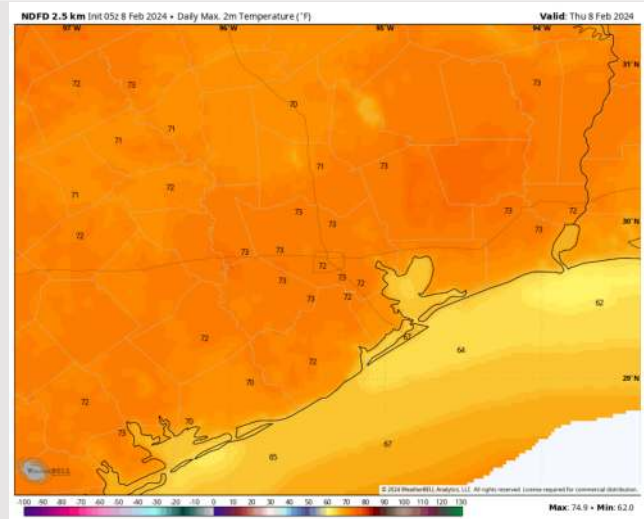
**High Temps:** **N of Morgan's Point:** Low to Mid 70s F **S of Morgan's Point:** Mid 60s F.

**Visibility:** Not anticipating any patchy fog concerns Thursday AM, however showers and misty conditions may lead to slightly reduced visibilities. For 11PM and beyond, we will need to watch sea fog risks extending northwestward. See visibility graphic for additional information.

## Precip Image: 5 AM CT



Wind Speed:  
6 PM CT



High Temps  
Today

# Houston Pilots: Fri. 2/9/2024



## Forecast Discussion

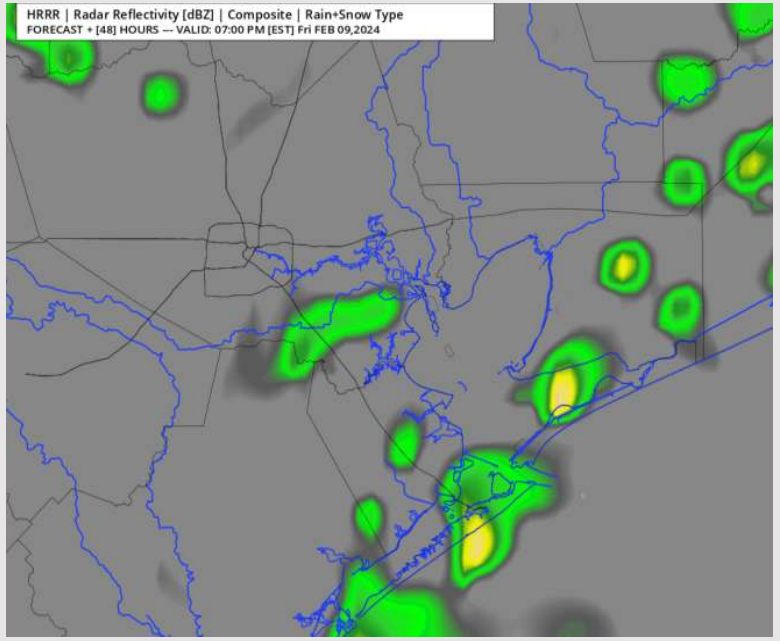
**Precip:** Favoring drizzle / light showers to begin to work into the region after 7AM and continue to be possible (40%) for the remainder of the day. Need to monitor for potential for light/moderate showers after 4PM.

**Wind:** Winds will remain out of the S / SE. **N Morgan's Point:** Winds to begin at 3 - 8 kts through 11AM before increasing to 7 - 11 kts for the rest of the day. **S of Morgan's Point:** Winds at 10 -15 kts for the entire day. **Gusts of 20 - 25 MPH possible for all stations (greatest risk N of 51/52) during the AM hours through 4PM.**

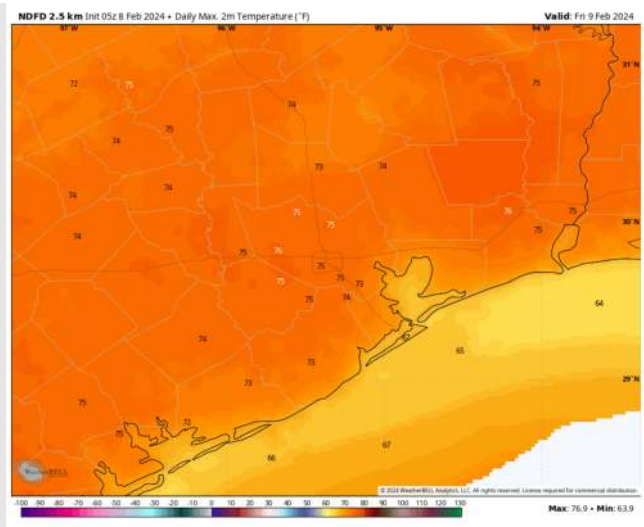
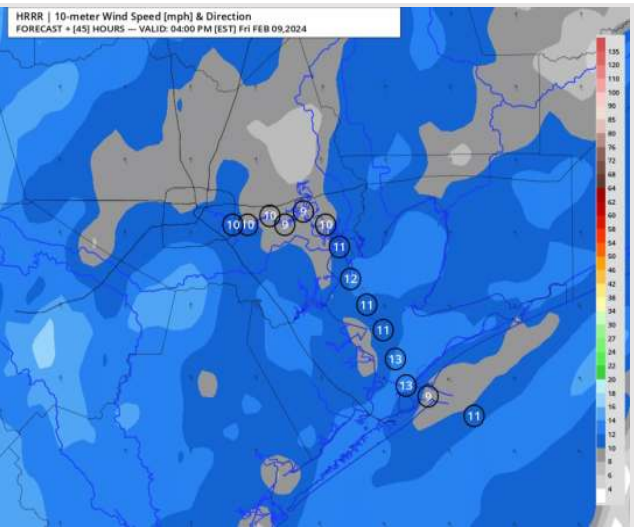
**High Temps:** **N of Morgan's Point:** Mid 70s F. **S of Morgan's Point:** Mid 60s.

**Visibility:** Keeping an eye on at least patchy sea fog potential through 10AM-CT. Coverage may become widespread if drizzle / light rain coverage is more limited.

## Precip Image: 6 PM CT



Wind Speed:  
3 PM CT



High Temps  
Friday

# Houston Pilots: Sat. 2/10/2024



## Forecast Discussion

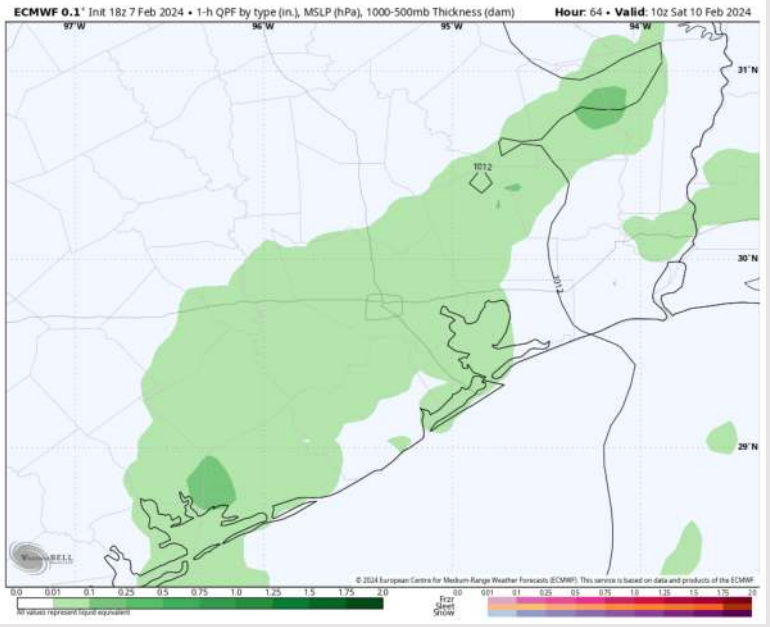
**Precip:** Light Rain risks will be ongoing during the morning hours (40%) with shower coverage gradually tapering off by 11AM.

**Wind:** Winds will start out and remain southerly before becoming southwesterly after 8PM. **N of Morgan's Point:** Winds will start at 7 - 10 kts before increasing to 9 - 13 kts after 10AM. **S of Morgan's Point:** Winds will remain at 13 - 17 kts for the entire day. **Gusts of 18 - 23 kts will be possible at all stations after 10AM.**

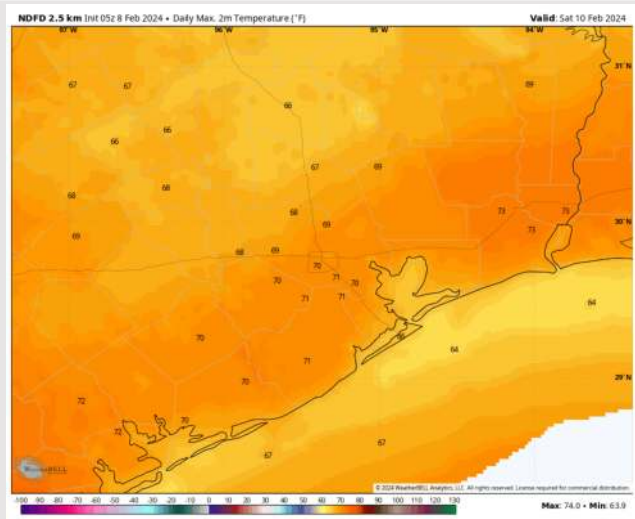
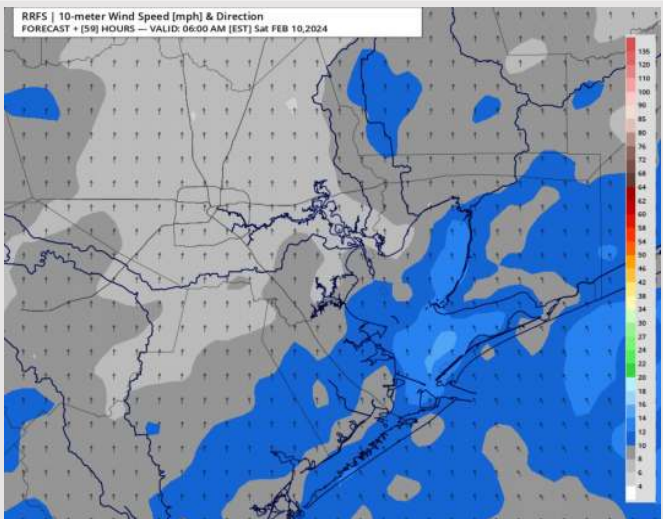
**High Temps:** **N of Morgan's Point:** Low 70 F. **S of Morgan's Point:** Mid 60s F

**Visibility:** Monitoring Patchy Sea Fog Risks for the AM Hours.

## Precip Image: 4 AM CT



Wind Speed:  
5 AM CT



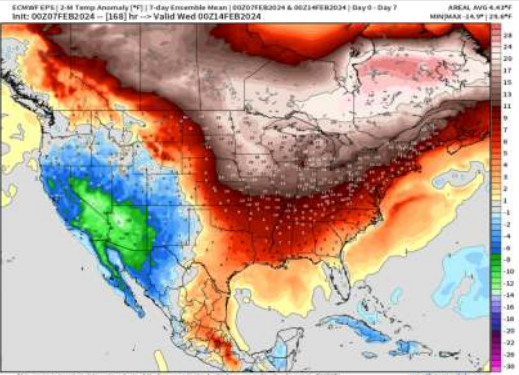
High Temps  
Saturday



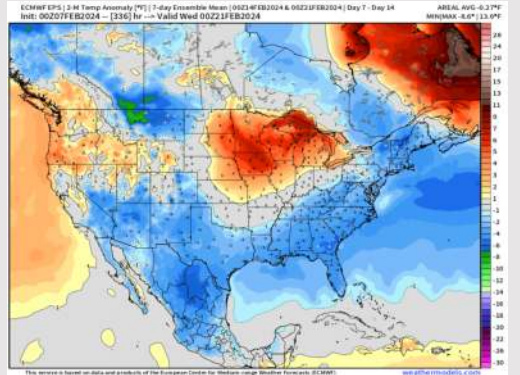
# Houston Pilots: 2/8/24



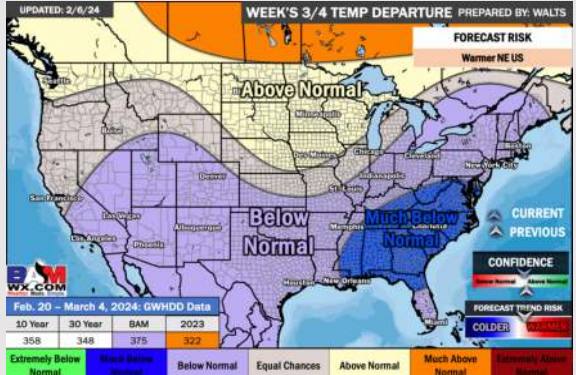
**Next 7 Day Temperature Departure**



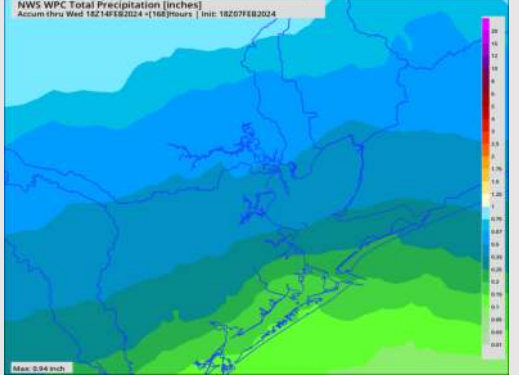
**8-14 Day Temperature Departure**



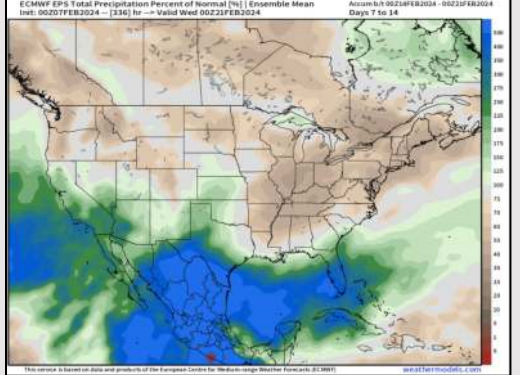
**15-30 Day Temperature Departure**



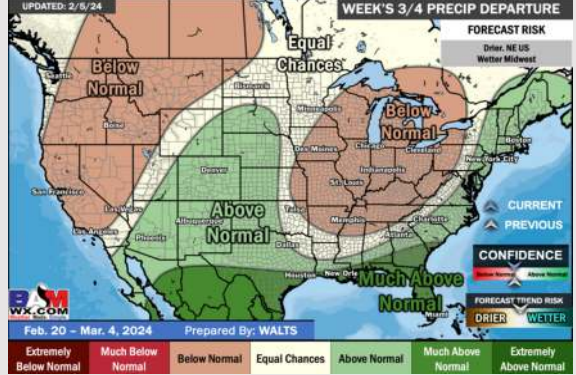
**Next 7 Day Total Precipitation**



**8-14 Day % of Average Precip.**



**15-30 Day % of Average Precip.**



- A weak front will try to press through starting on THU. Following this front will be a more active weekend. Above normal temperatures favored for the week ahead.
- Seasonable to slightly above normal precipitation chances are at play during the week 2 timeframe. Temps expected to be below normal.
- Below normal temperatures and much above normal chances for precipitation are favored in the weeks 3/4 timeframe.