

Houston Pilots Forecast Package



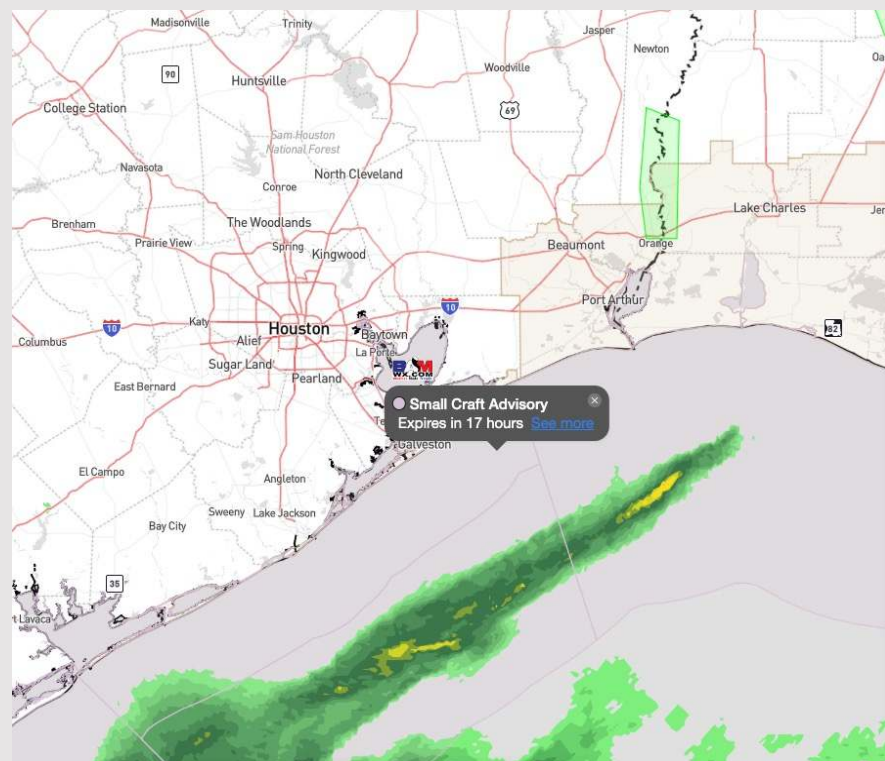
Updated: 1:10 PM CT

Saturday, February 17, 2024

Forecaster: Jonathan Kipper

Weather Headlines

- Light rain/drizzle will continue for for the afternoon/early evening, before a dry start to next week.
- Winds will continue to be slightly elevated today before decreasing throughout SUN.
- **Not anticipating a fog risk over the next several days.**



Radar/NWS Alerts: 12:55 PM CT



As always, please do not hesitate to reach out to us with any forecast questions via the chat option on Clarity or our on-call number, **(317)-560-8122** press 1 for forecast questions.

Houston Pilots Extended Range Visibility Report



Tuesday 2/20/24

While winds will be out of the southeast, not favoring fog concerns at this time.

Forecast Confidence



Thursday 2/22/24

Not favoring visibility concerns at this time.

Forecast Confidence



Wednesday 2/21/24

Not favoring visibility concerns at this time.

Forecast Confidence



Chance for Fog

Tuesday AM	Unlikely
Tuesday PM	Unlikely
Wednesday AM	Unlikely
Wednesday PM	Unlikely
Thursday AM	Unlikely
Thursday PM	Unlikely

Houston Pilots Visibility Chart (miles)



Time	Sat 1pm	Sat 2pm	Sat 3pm	Sat 4pm	Sat 5pm	Sat 6pm	Sat 7pm	Sat 8pm	Sat 9pm	Sat 10pm	Sat 11pm	Sun 12am	Sun 1am	Sun 2am	Sun 3am	Sun 4am	Sun 5am	Sun 6am	Sun 7am	Sun 8am	Sun 9am	Sun 10am	Sun 11am	Sun 12pm
610 Bridge	10	10	10	10	10	10	10	10	10	10	10	10	10	10	10	10	10	10	10	10	10	10	10	10
Kinder 1	10	10	10	10	10	10	10	10	10	10	10	10	10	10	10	10	10	10	10	10	10	10	10	10
Greens Bayou	10	10	10	10	10	10	10	10	10	10	10	10	10	10	10	10	10	10	10	10	10	10	10	10
Shell Crude	10	10	10	10	10	10	10	10	10	10	10	10	10	10	10	10	10	10	10	10	10	10	10	10
Lynchburg Ferries	10	10	10	10	10	10	10	10	10	10	10	10	10	10	10	10	10	10	10	10	10	10	10	10
Exxon 3	10	10	10	10	10	10	10	10	10	10	10	10	10	10	10	10	10	10	10	10	10	10	10	10
Morgans Point	10	10	10	10	10	10	10	10	10	10	10	10	10	10	10	10	10	10	10	10	10	10	10	10
75/76	10	10	10	10	10	10	10	10	10	10	10	10	10	10	10	10	10	10	10	10	10	10	10	10
63/64	10	10	10	10	10	10	10	10	10	10	10	10	10	10	10	10	10	10	10	10	10	10	10	10
51/52	10	10	10	10	10	10	10	10	10	10	10	10	10	10	10	10	10	10	10	10	10	10	10	10
37/38	10	10	10	10	10	10	10	10	10	10	10	10	10	10	10	10	10	10	10	10	10	10	10	10
25/26	10	10	10	10	10	10	10	10	10	10	10	10	10	10	10	10	10	10	10	10	10	10	10	10
11/12	10	10	10	10	10	10	10	10	10	10	10	10	10	10	10	10	10	10	10	10	10	10	10	10
1 & 2 Bravo	10	10	10	10	10	10	10	10	10	10	10	10	10	10	10	10	10	10	10	10	10	10	10	10

NOTE: This is automated data that may/may not agree with the official BAM thinking that's found on the daily slides or special visibility report slides. This data should be used as a guide only

Houston Pilots Wind Chart



Sustained wind 13 Knots
Gusts 18 Knots
Wind from the N

Example

WS: 13
G:18
N

Time Knots	Sat 1pm	Sat 2pm	Sat 3pm	Sat 4pm	Sat 5pm	Sat 6pm	Sat 7pm	Sat 8pm	Sat 9pm	Sat 10pm	Sat 11pm	Sun 12am	Sun 1am	Sun 2am	Sun 3am	Sun 4am	Sun 5am	Sun 6am	Sun 7am	Sun 8am	Sun 9am	Sun 10am	Sun 11am	Sun 12pm
610 Bridge	13	12	12	12	11	10	9	9	9	7	6	6	5	5	6	6	6	5	5	5	6	6	6	5
	26	23	24	23	21	21	20	18	17	14	13	12	12	11	12	11	11	11	11	11	12	11	10	9
	N	N	N	N	N	N	N	N	N	N	N	N	N	N	N	N	N	N	N	N	N	N	N	NNW
Kinder 1	13	13	11	12	11	10	9	9	9	7	6	6	5	6	6	6	6	5	5	5	6	6	6	5
	26	23	24	23	21	20	19	18	17	15	13	13	12	11	12	11	11	11	11	11	12	12	10	9
	N	N	N	N	N	N	N	N	N	N	N	N	N	N	N	N	N	N	N	N	N	N	N	NNW
Greens Bayou	13	13	11	11	11	10	9	9	9	8	7	6	5	6	5	5	6	5	5	5	6	6	5	5
	25	23	23	22	21	20	19	18	18	16	13	13	12	11	11	11	11	11	11	11	12	11	10	9
	N	N	N	N	N	N	N	N	N	N	N	N	N	N	N	N	N	N	N	N	N	N	N	N
Shell Crude	13	13	11	11	11	10	9	9	9	8	7	6	6	6	6	6	6	5	5	5	6	6	6	5
	25	23	23	22	21	20	19	19	18	16	13	13	12	11	12	12	11	11	11	11	12	11	10	10
	N	N	N	N	N	N	N	N	N	N	N	N	N	N	N	N	N	N	N	N	N	N	N	N
Lynchburg Ferries	13	13	12	12	11	9	9	9	9	7	7	6	5	5	5	5	5	5	5	5	5	6	6	5
	24	22	23	22	21	20	19	18	18	15	13	12	12	11	11	11	11	11	11	11	12	11	10	9
	N	N	N	N	N	N	N	N	N	N	N	N	N	N	N	N	N	N	N	N	N	N	N	N
Exxon 3	14	14	13	14	14	13	13	12	11	11	9	8	7	8	8	8	8	7	7	7	7	7	6	5
	23	23	23	22	21	21	19	19	18	16	15	13	13	13	13	13	13	12	12	12	12	12	11	10
	N	N	N	N	N	N	N	N	N	N	N	N	N	N	N	N	N	N	N	N	N	N	N	N
Morgans Point	14	14	13	14	13	13	13	12	11	11	10	9	8	9	9	8	8	8	7	7	7	7	6	5
	24	23	22	21	21	20	19	19	18	16	16	14	13	13	13	13	13	13	12	13	12	12	11	10
	N	N	N	N	N	N	N	N	N	N	N	N	N	N	N	N	N	N	N	N	N	N	N	N
75/76	18	19	17	18	19	19	18	17	17	17	16	15	14	14	14	14	14	14	13	12	11	9	7	6
	26	27	25	27	27	27	26	26	24	24	23	21	21	22	21	21	21	21	19	18	15	14	13	13
	N	N	N	N	N	N	N	N	N	N	N	N	N	N	N	N	N	N	N	N	N	N	N	N
63/64	18	18	17	17	19	19	19	18	17	17	16	15	15	15	14	14	14	14	13	12	11	9	8	6
	27	27	25	26	28	27	27	26	25	24	23	22	22	22	21	21	21	21	20	18	15	14	13	13
	N	N	N	N	N	N	N	N	N	N	N	N	N	N	NNE	N	N	N	N	N	N	N	N	N
51/52	20	19	18	19	19	20	19	19	17	18	17	16	16	16	15	15	15	15	14	13	11	9	9	7
	30	28	26	27	29	29	28	28	25	26	24	23	24	23	22	21	21	21	21	19	16	14	13	13
	N	N	N	N	NNE	N	N	N	N	N	NNE	NNE	NNE	NNE	NNE	NNE	NNE	NNE	NNE	NNE	NNE	NNE	N	N
37/38	21	19	18	19	20	19	19	19	18	17	17	16	17	16	15	15	15	15	13	11	10	9	8	
	30	29	26	27	29	28	28	27	26	26	25	23	24	23	22	22	22	22	21	19	17	15	13	13
	NNE	N	N	N	NNE	NNE	N	N	N	NNE	NNE	NNE	NNE	NNE	NNE	NNE	NNE	NNE	NNE	NNE	NNE	NNE	N	N
25/26	21	20	19	19	19	19	19	19	18	18	17	16	17	16	16	16	15	15	13	12	11	9	9	
	30	29	27	28	28	28	28	27	27	27	25	23	24	23	23	23	22	22	21	20	18	15	14	13
	NNE	NNE	N	N	NNE	NNE	NNE	NNE	NNE	NNE	NNE	NNE	NNE	NNE	NNE	NNE	NNE	NNE	NNE	NNE	NNE	NNE	N	N
11/12	19	18	17	17	18	17	17	17	15	15	15	14	14	14	13	14	14	14	13	12	11	10	9	9
	29	27	25	25	26	26	24	24	22	22	21	20	20	21	20	20	20	20	19	18	16	15	14	13
	NNE	N	N	N	NNE	NNE	N	NNE	N	N	NNE	NNE	NNE	NNE	NNE	NNE	NNE	NNE	NNE	NNE	NNE	NNE	N	N
1 & 2 Bravo	21	20	20	21	21	20	20	20	19	18	18	17	17	18	18	17	17	17	17	15	14	12	10	9
	31	29	29	30	30	29	30	29	28	27	26	24	26	26	26	26	25	25	24	21	20	17	15	13
	NNE	NNE	N	N	NNE	N	N	N	N	NNE	NNE	NNE	NNE	NNE	NNE	NNE	NNE	NNE	NNE	NNE	NNE	NNE	NNE	N

NOTE: This is automated data that may/may not agree with the official BAM thinking that's found on the daily slides or special visibility report slides. This data should be used as a guide only

Houston Pilots: Sat. 2/17/2024

Forecast Discussion

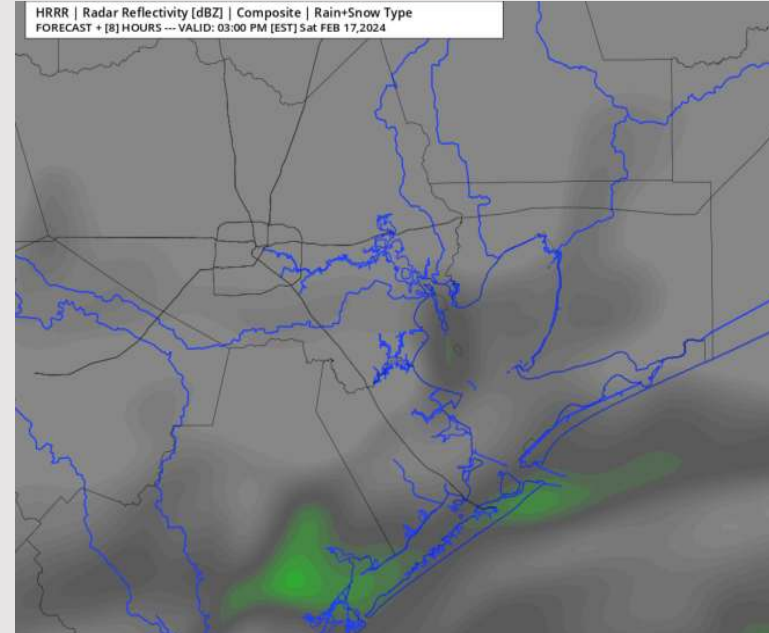
Precip: Light drizzle will be possible through 8 PM, especially for locations S of Morgan's Point. Dry conditions favored after 8 PM.

Wind: Winds will remain elevated and out of the N/NNE throughout the PM hours today. **N Morgan's Point:** Winds at 11 - 15 kts through 9 PM before decreasing to 6-10 kts. **S of Morgan's Point:** Winds at 18 - 23 kts throughout the day. Gusts of up to 25 kts will be possible through 8PM.

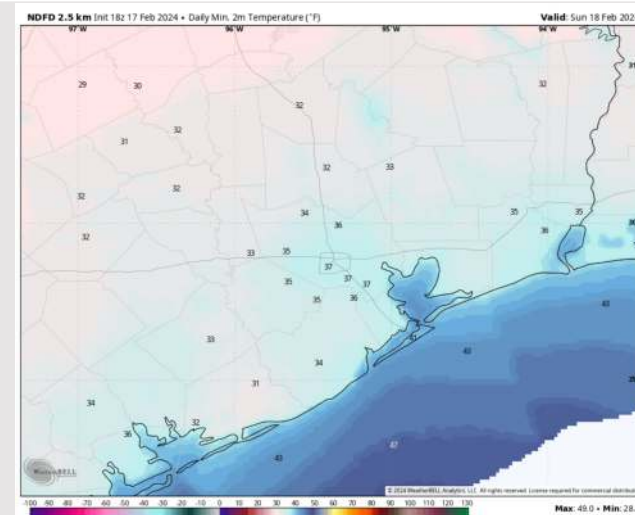
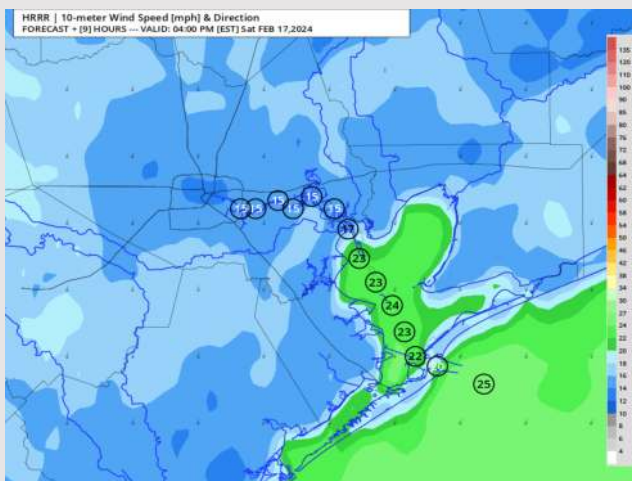
Low Temps: **N of Morgan's Point:** Mid to Upper 30s F. **S of Morgan's Point:** Low 40s F

Visibility: No fog concerns for the remainder of the day.

Precip Image: 2 PM CT



Wind Speed:
3 PM CT



Low Temps
SUN AM

Houston Pilots: Sun. 2/18/2024

Forecast Discussion

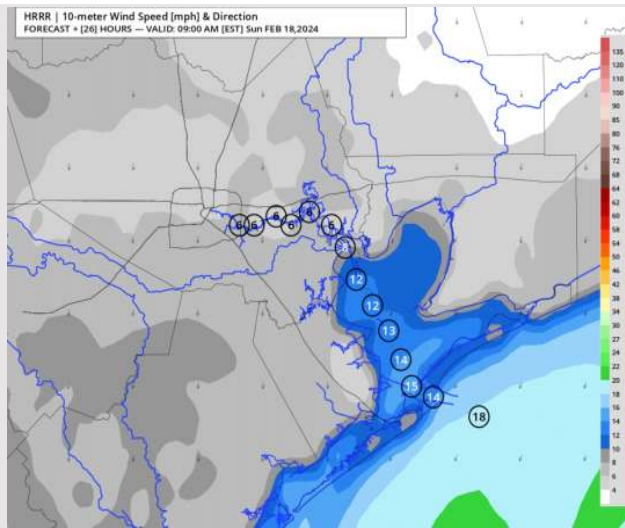
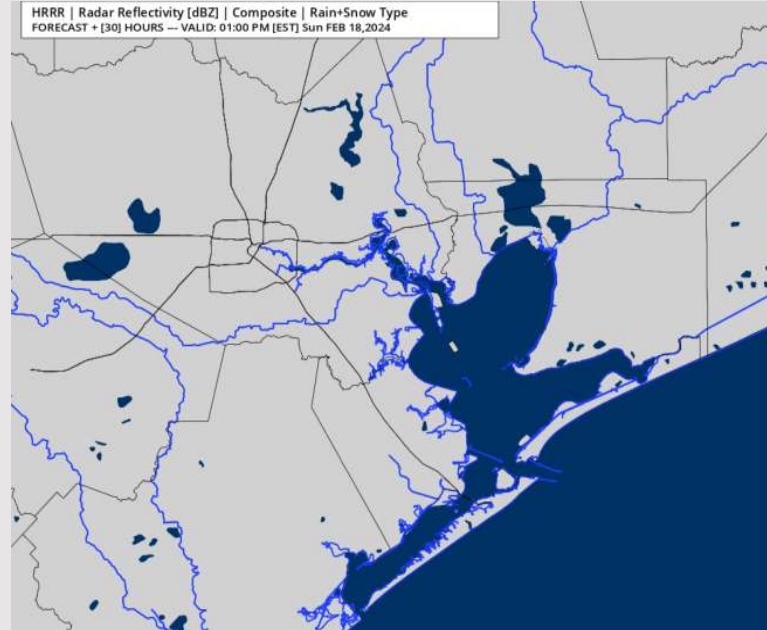
Precip: Favoring dry conditions for Sunday.

Wind: Winds to continue out of the N/NE through 3PM before becoming variable for the remainder of the period. **N Morgan's Point:** 4 – 9 kts through 5 PM before becoming 3 – 6 kts. **S of Morgan's Point:** Winds at 12-17 kts through 9 AM before decreasing to 8 – 13 kts through 3PM. After 3 PM, winds will be at 4 – 9 kts for the remainder of the day for all Stations. Gusts of 15 – 20 kts will be possible through 10AM near the Boarding Station.

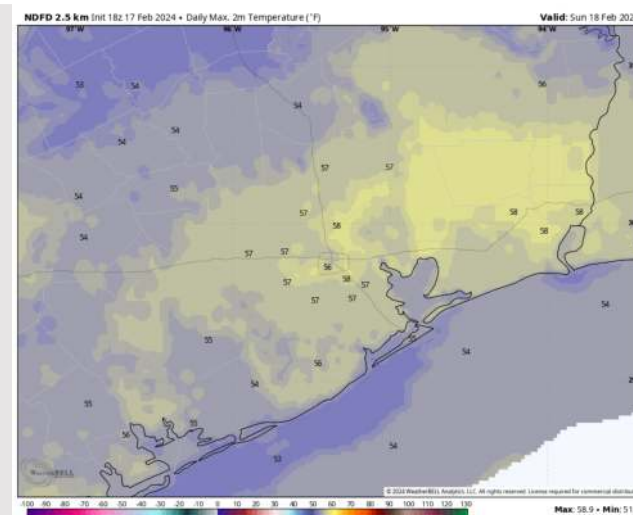
High Temps: **N of Morgan's Point:** Upper 50sF. **S of Morgan's Point:** Mid 50's F.

Visibility: Not anticipating any fog concerns at this time.

Precip Image: 12 PM CT



Wind Speed:
8 AM CT



High Temps
Sunday

Houston Pilots: Mon. 2/19/2024

Forecast Discussion

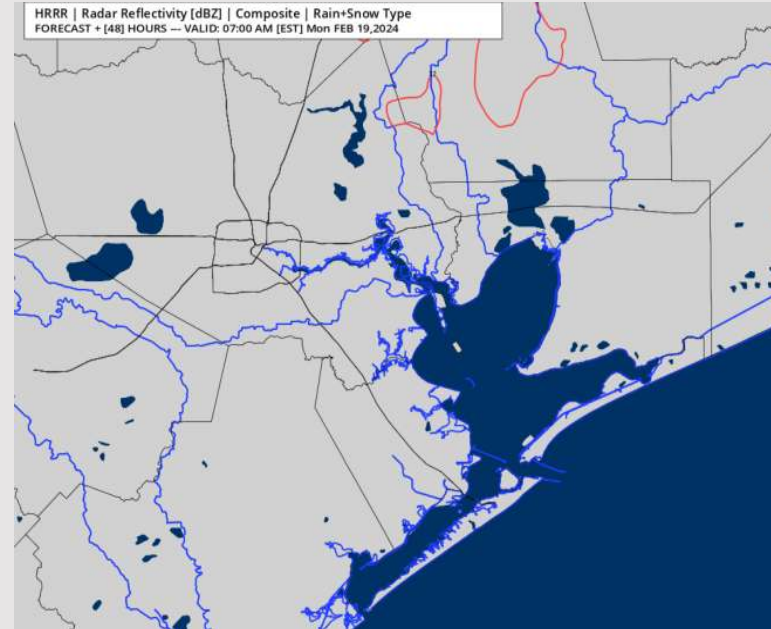
Precip: Favoring dry conditions throughout the day Monday.

Wind: Winds predominantly out of the N/NW will settle out of the S/SE by 1 PM. **N of Morgan's Point:** Winds at 2-6 kts through 1 PM before slight increase to 4-9 kts the rest of the day. **S of Morgan's Point:** Winds at 3-7 kts through 3 PM before increasing to 6-11 kts the remainder of MON.

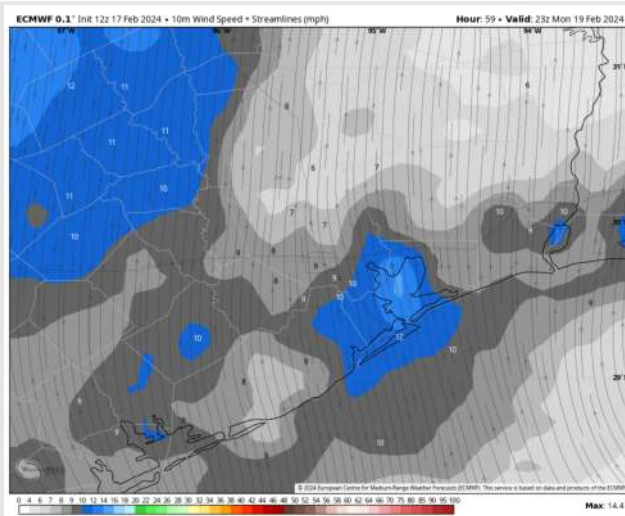
High Temps: **N of Morgan's Point:** Mid/Upper 60s F. **S of Morgan's Point:** Low 60s F.

Visibility: While winds will be out of the SE in the afternoon/evening, not favoring fog concerns at this time.

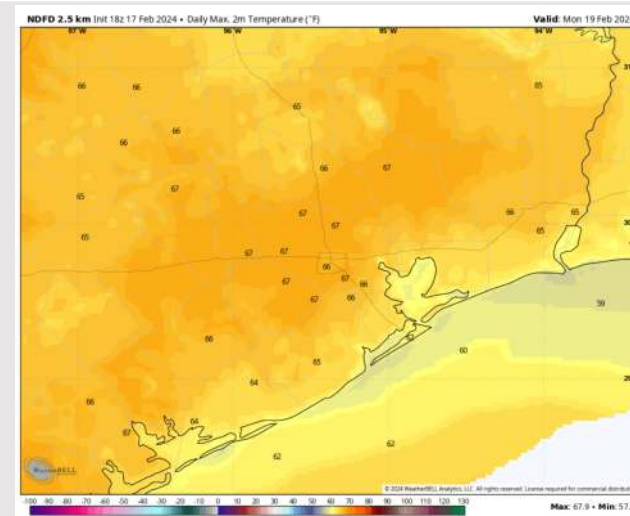
Precip Image: 6 AM CT



Wind Gusts:
5 PM CT

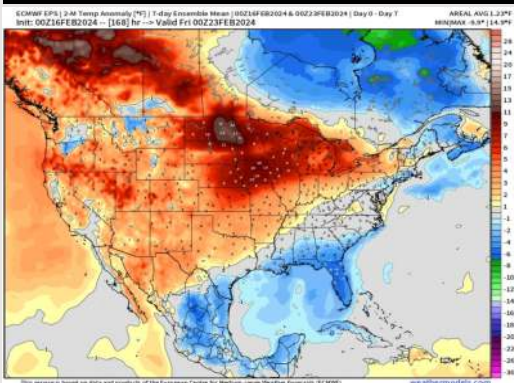


High Temps
Monday

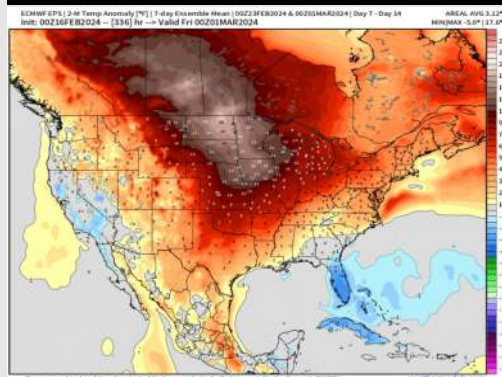


Houston Pilots: 2/17/24

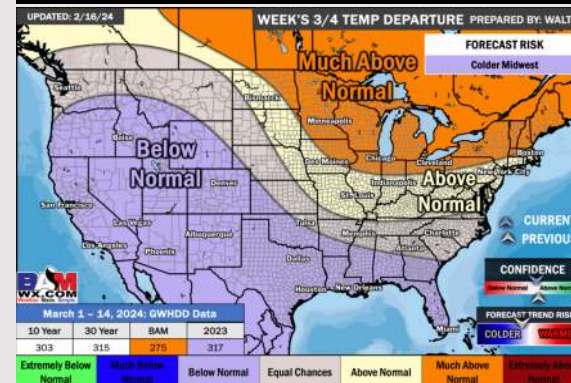
Next 7 Day Temperature Departure



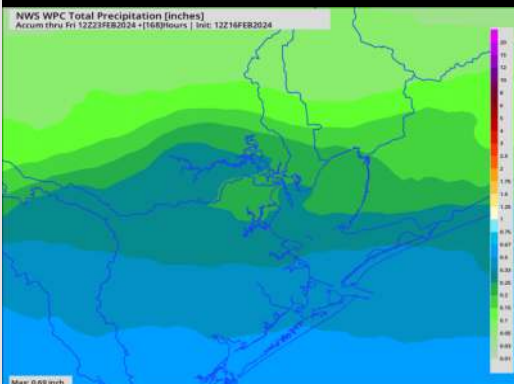
8-14 Day Temperature Departure



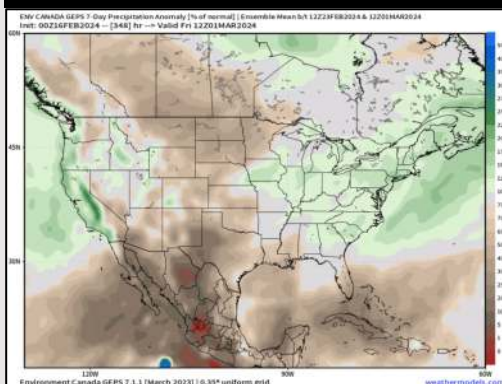
15-30 Day Temperature Departure



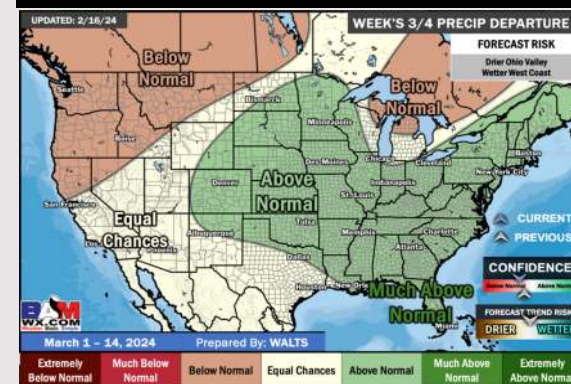
Next 7 Day Total Precipitation



8-14 Day % of Average Precip.



15-30 Day % of Average Precip.



- Outside of light rain showers/drizzle moving through today, a drier week is favored ahead. Slightly below normal temperatures favored for the week ahead.
- Below normal precipitation chances are at play during the week 2 timeframe. Temps expected to be above normal.
- Below normal temperatures and near normal chances for precipitation are favored in the weeks $\frac{3}{4}$ timeframe.