

# Houston Pilots Forecast Package



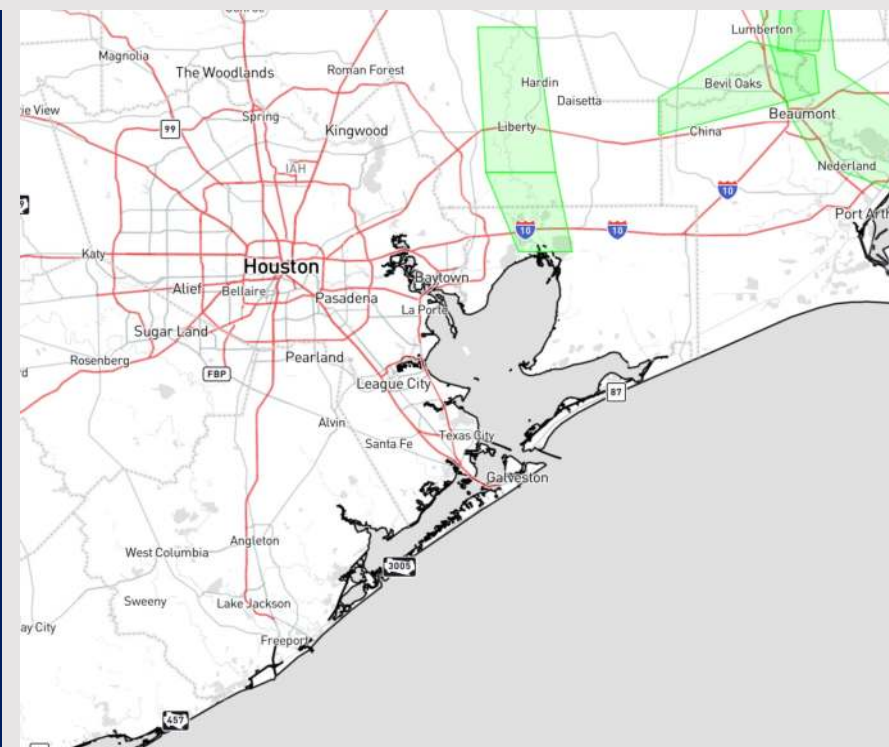
Updated: 1:00 PM CT

Thursday, February 1, 2024

Forecaster: Alyssa Elliott

## Weather Headlines

- Winds to remain rather calm through Friday evening before a front approaches the area.
- Lower end, patchy fog risks in play over the next few days. **See Visibility Slide for Additional Information**
- Beyond Saturday Morning, less active period favored to continue.



**Radar/NWS Alerts: 1:00 PM CT**

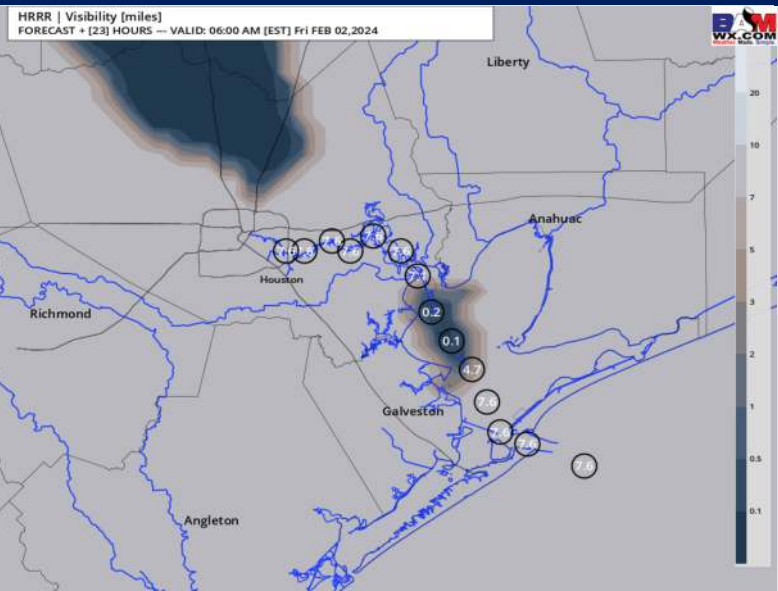


As always, please do not hesitate to reach out to us with any forecast questions via the chat option on the Weather Porthole or our on-call number, **(317)-560-8122** press 1 for forecast questions.

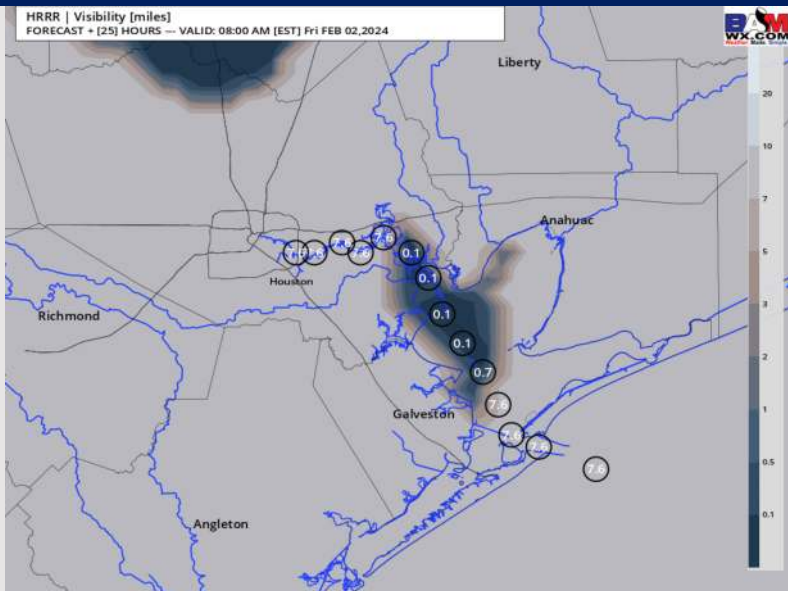
# Houston Pilots Visibility Report



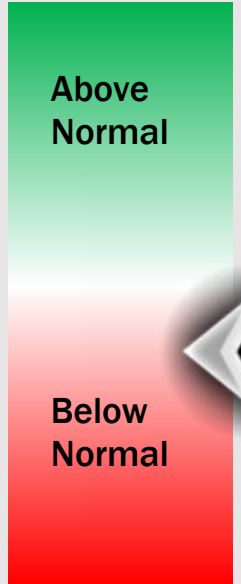
## 5 AM CT FRI Visibility



## 7 AM CT FRI Visibility



## Confidence



TIMEFRAME DISCUSSED	THREAT
5 AM - 11 AM THU	Low

- Confidence remains fairly low in terms of coverage and start time for this event. Given slightly elevated winds and cloud cover concerns, favoring this lower end risk to be patchier in nature at this time.
- Anticipating patchy fog could begin to develop around 5 AM Friday morning within the Bay near stations 51/52 where coverage will gradually bleed N. towards Shell Crude. If this fog can develop, favoring coverage to be patchy in nature, reducing visibility to 2 – 4 miles. It’s possible that visibility could drop to 1 mile or less at times.
- Favoring the “greatest coverage” to occur between 7 – 9 AM-CT, with fog the risk clearing out by 11 AM-CT.

# Houston Pilots Extended Range Visibility Report



## Sunday 2/4/24

Not favoring fog concerns at this time.



## Monday 2/5/24

Not favoring fog concerns at this time.



## Tuesday 2/6/24

Not favoring fog concerns at this time.



## Chance for Fog

Sunday AM	Unlikely
Sunday PM	Unlikely
Monday AM	Unlikely
Monday PM	Unlikely
Tuesday AM	Unlikely
Tuesday PM	Unlikely

# Houston Pilots Visibility Chart (miles)



## Forecast Confidence



Time	Thu 1pm	Thu 2pm	Thu 3pm	Thu 4pm	Thu 5pm	Thu 6pm	Thu 7pm	Thu 8pm	Thu 9pm	Thu 10pm	Thu 11pm	Fri 12am	Fri 1am	Fri 2am	Fri 3am	Fri 4am	Fri 5am	Fri 6am	Fri 7am	Fri 8am	Fri 9am	Fri 10am	Fri 11am	Fri 12pm
610 Bridge	10	10	10	10	10	10	10	10	10	10	10	10	10	9	6	6	5	4	4	5	10	10	10	10
Kinder 1	10	10	10	10	10	10	10	10	10	10	10	10	10	9	6	6	5	4	4	5	10	10	10	10
Greens Bayou	10	10	10	10	10	10	10	10	10	10	10	10	10	8	6	5	4	4	4	5	10	10	10	10
Shell Crude	10	10	10	10	10	10	10	10	10	10	10	10	10	8	6	5	4	4	4	5	10	10	10	10
Lynchburg Ferries	10	10	10	10	10	10	10	10	10	10	10	10	10	8	6	5	4	4	4	4	10	10	10	10
Exxon 3	10	10	10	10	10	10	10	10	10	10	10	10	10	8	6	5	4	4	4	4	10	10	10	10
Morgans Point	10	10	10	10	10	10	10	10	10	10	10	10	10	8	6	5	5	4	4	5	10	10	10	10
75/76	10	10	10	10	10	10	10	10	10	10	10	10	10	10	8	8	8	8	8	8	9	10	10	10
63/64	10	10	10	10	10	10	10	10	10	10	10	10	10	10	8	8	8	8	8	8	9	10	10	10
51/52	10	10	10	10	10	10	10	10	10	10	10	10	10	10	8	8	8	8	8	8	9	9	9	9
37/38	10	10	10	10	10	10	10	10	10	10	10	10	10	10	8	8	8	8	8	9	9	9	9	9
25/26	10	10	10	10	10	10	10	10	10	10	10	10	10	10	8	8	8	8	8	9	9	9	9	9
11/12	10	10	10	10	10	10	10	10	10	10	10	10	10	10	8	8	8	8	9	9	9	9	9	8
1 & 2 Bravo	10	10	10	10	10	10	10	10	10	10	10	10	10	10	8	8	8	9	9	9	9	9	8	8

**NOTE: This is automated data that may/may not agree with the official BAM thinking that's found on the daily slides or special visibility report slides. This data should be used as a guide only**

# Houston Pilots Wind Chart



## Forecast Confidence



Sustained wind 13 Knots  
Gusts 18 Knots  
Wind from the N

## Example

WS: 13  
G:18  
N

Time Knots	Thu 1pm	Thu 2pm	Thu 3pm	Thu 4pm	Thu 5pm	Thu 6pm	Thu 7pm	Thu 8pm	Thu 9pm	Thu 10pm	Thu 11pm	Fri 12am	Fri 1am	Fri 2am	Fri 3am	Fri 4am	Fri 5am	Fri 6am	Fri 7am	Fri 8am	Fri 9am	Fri 10am	Fri 11am	Fri 12pm
610 Bridge	6	7	7	8	9	7	5	5	5	4	4	4	4	3	3	3	3	3	3	4	5	7	7	9
	11	13	14	13	13	13	12	10	8	9	7	8	8	7	7	6	6	5	5	7	10	13	14	16
	S	S	S	S	SSE	SSE	SSE	SSE	SSE	SSE	SSE	SSE	SSE	SSE	SSE	SSE	SE	SE	SE	SE	SSE	SSE	SSE	SSE
Kinder 1	6	7	8	8	8	7	5	5	5	4	4	4	4	3	3	3	3	3	3	4	5	7	7	8
	11	13	13	13	13	13	11	10	8	8	7	8	8	7	7	6	6	5	6	7	11	13	14	16
	S	SSE	SSE	SSE	SSE	SSE	SSE	SSE	SSE	SSE	SSE	SSE	SSE	SSE	SSE	SSE	SE	SE	SE	SE	SSE	SSE	SSE	SSE
Greens Bayou	6	7	8	8	7	7	5	5	5	4	4	4	4	3	3	3	3	3	3	4	5	7	7	8
	10	12	13	14	13	12	10	9	7	8	7	8	8	7	6	6	6	5	6	8	10	12	13	15
	SSE	SSE	SSE	SSE	SSE	SSE	SSE	SSE	SSE	SSE	SSE	SSE	SSE	SSE	SSE	SSE	SSE	SE	SE	SE	SE	SSE	SSE	SSE
Shell Crude	6	7	7	8	7	7	5	5	5	4	4	4	3	3	3	3	3	3	3	4	5	7	7	9
	10	12	13	13	13	12	11	9	8	8	7	8	7	7	7	6	6	6	6	7	11	12	13	15
	SSE	SSE	SSE	SSE	SSE	SSE	SSE	SSE	SSE	SSE	SSE	SSE	SSE	SSE	SSE	SSE	SSE	SE	SE	SE	SE	SSE	SSE	SSE
Lynchburg Ferries	6	7	8	8	7	7	5	5	5	4	3	3	3	3	3	3	3	3	3	4	5	7	8	8
	11	12	14	14	13	12	10	9	7	8	7	7	7	6	5	5	5	5	6	8	10	12	13	15
	SSE	SSE	SSE	SSE	SSE	SSE	SSE	SSE	SSE	SSE	SSE	SSE	SSE	SSE	SSE	SSE	SSE	SE	SE	SE	SE	SSE	SSE	SSE
Exxon 3	6	7	9	9	9	8	7	7	7	6	5	5	5	4	4	4	4	4	5	6	6	7	7	9
	12	13	14	15	13	13	10	10	10	9	8	9	8	7	7	6	7	7	7	8	11	12	13	15
	SSE	SSE	SSE	SSE	SSE	SSE	SSE	SSE	SSE	SSE	SSE	SSE	SSE	SSE	SSE	SSE	SSE	SE	SE	SE	SE	SSE	SSE	SSE
Morgans Point	6	7	9	9	9	7	7	7	6	5	5	5	4	4	4	4	4	4	5	5	6	7	7	8
	11	12	13	13	13	11	9	9	9	9	8	8	8	7	7	6	7	6	7	8	10	12	13	14
	SSE	SSE	SSE	SSE	SSE	SSE	SSE	SSE	SSE	SSE	SSE	SSE	SSE	SSE	SSE	SSE	SSE	SE	SE	SE	SE	SSE	SSE	SSE
75/76	7	8	9	11	11	11	9	9	9	9	8	8	7	7	7	7	7	7	7	8	8	9	9	9
	13	13	15	16	16	15	14	13	13	13	12	12	11	11	10	10	10	10	11	12	12	13	14	16
	SE	SE	SE	SSE	SSE	SSE	SSE	SSE	SSE	SSE	SSE	SSE	SSE	SSE	SSE	SSE	SSE	SE	SE	SE	SE	SSE	SSE	SSE
63/64	7	8	9	10	11	10	9	9	8	8	8	7	7	7	6	7	6	7	7	8	8	9	9	9
	13	13	14	15	15	14	13	13	12	12	12	11	10	10	9	9	9	10	10	12	12	13	14	15
	SE	SE	SE	SSE	SSE	SSE	SSE	SSE	SSE	SSE	SSE	SSE	SSE	SSE	SSE	SSE	SSE	SE	SE	SE	SE	SSE	SSE	SSE
51/52	6	7	9	9	9	9	8	7	7	7	7	7	6	5	6	5	5	5	7	7	8	9	9	9
	12	13	13	13	13	13	12	11	10	11	11	10	9	8	8	8	8	8	10	11	12	13	14	15
	SE	SSE	SSE	SSE	SSE	SSE	SSE	SE	SE	SE	SSE	SSE	SSE	SSE	SSE	SSE	SSE	SSE	SE	SE	SE	SSE	SSE	SSE
37/38	7	7	8	9	9	9	7	7	7	7	7	7	6	5	5	5	5	5	7	7	8	9	9	9
	12	12	13	13	13	13	11	10	10	11	10	10	9	8	8	8	7	8	9	11	12	13	13	15
	SE	SSE	SSE	SSE	SSE	SSE	SE	SE	SE	SE	SE	SSE	SSE	SSE	SSE	SSE	SSE	SSE	SE	SE	SE	SE	SE	SE
25/26	7	7	8	8	9	8	7	7	6	7	7	6	6	5	5	5	5	5	6	7	8	9	9	9
	12	12	12	12	13	12	10	10	9	10	9	9	9	8	8	7	7	7	9	11	12	13	13	14
	SE	SSE	SSE	SSE	SSE	SSE	SE	SE	SE	SE	SE	SSE	SSE	SSE	SSE	SSE	SSE	SSE	SE	SE	SE	SE	SE	SE
11/12	7	7	7	7	7	7	6	6	5	5	5	5	5	5	4	5	5	5	7	7	9	9	9	9
	12	11	11	11	10	10	9	9	8	8	8	8	8	7	7	7	6	8	8	9	11	13	14	13
	SE	SE	SSE	SSE	SSE	SE	SE	SE	SE	SE	SE	SSE	SSE	SSE	SSE	SSE	SSE	SSE	SE	SE	SE	SE	SE	SE
1 & 2 Bravo	6	7	6	8	8	9	8	8	8	8	8	8	8	7	7	7	7	7	8	8	8	9	9	9
	11	11	10	12	12	13	12	12	12	12	12	12	12	10	10	9	10	11	12	12	12	13	13	14
	SE	SE	SE	SE	SE	SE	SE	SE	SE	SE	SE	SE	SE	SSE	SSE	SSE	SSE	SSE	SE	SE	SE	SE	SE	SE

**NOTE: This is automated data that may/may not agree with the official BAM thinking that's found on the daily slides or special visibility report slides. This data should be used as a guide only**

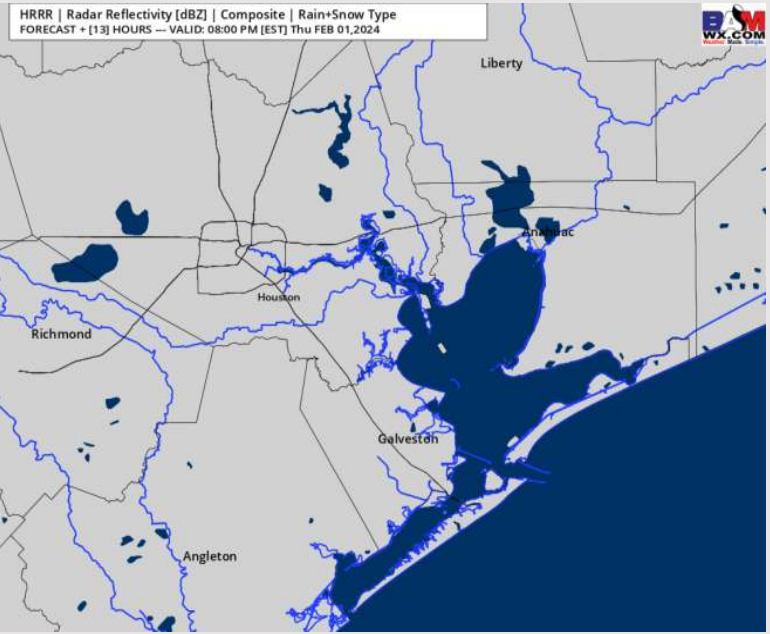
# Houston Pilots: Thu. 2/1/2024



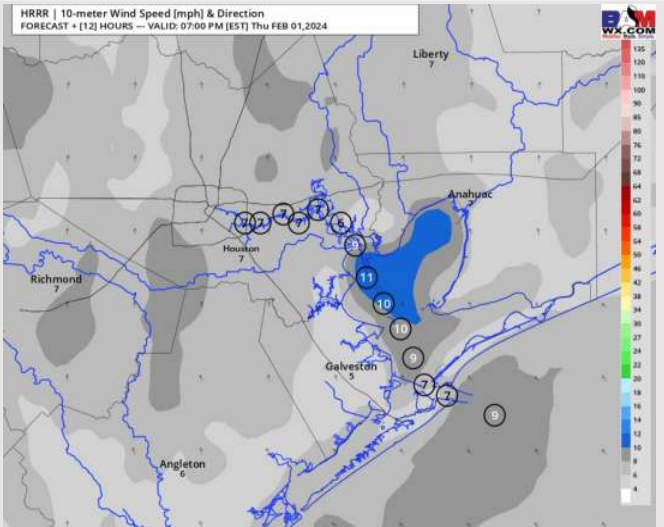
## Forecast Discussion

- Precip:** Dry conditions favored for the rest of today.
- Wind:** Winds will be out of the SE through the rest of the afternoon / evening. **N of Morgan's Point:** Winds will be at 3 – 8 kts through the rest of the day, occasionally reaching 10 kts. **S of Morgan's Point:** Winds will be at 5 – 10 kts throughout the rest of the day. Favoring gusts of 15 – 18 kts to be possible for all stations through the PM.
- Low Temps:** **N of Morgan's Point:** Mid 50s F. **S of Morgan's Point:** Mid to Uppers 50s F
- Visibility:** Patchy fog risks favored to hold off until Friday AM. **Check out visibility slide for more details.**

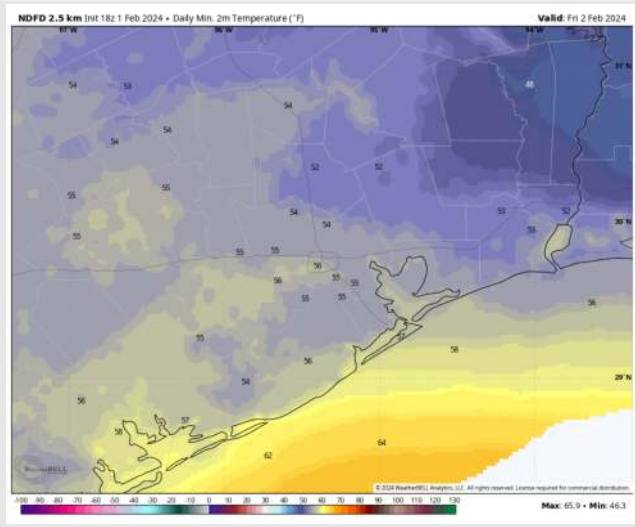
## Precip Image: 7 PM CT



Wind Speed:  
6 PM CT



Low Temps  
FRI AM



# Houston Pilots: Fri. 2/2/2024



## Forecast Discussion

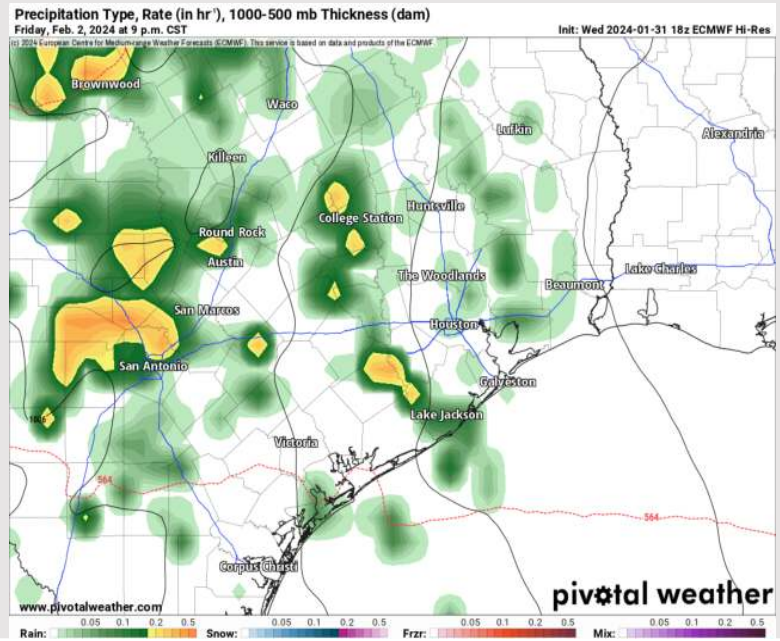
**Precip:** Pockets of drizzle will be possible early Friday afternoon with scattered showers and a few storms working in around 8 PM-CT and continuing through the rest of the evening. Main storm line favored to impact area Saturday AM.

**Wind:** Winds will remain out of the southeast for the entire day. **N Morgan's Point:** Will start the day at 3 – 7 kts before increasing to 6 – 11 kts after 12PM for the remainder of the day. **S of Morgan's Point:** 8 – 14 kts for the entire day.

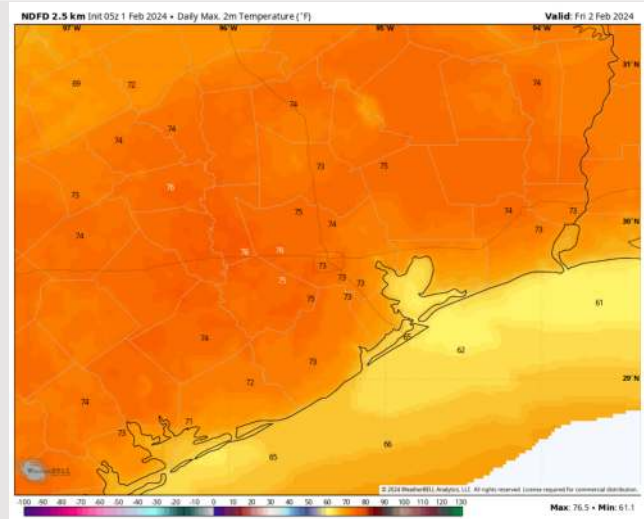
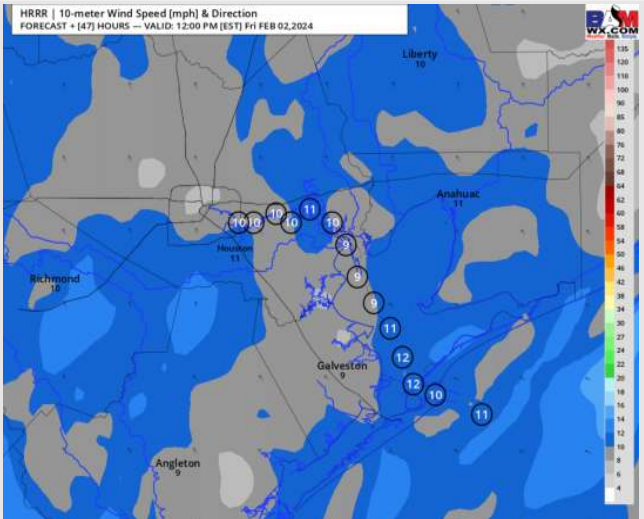
**High Temps:** **N of Morgan's Point:** Lower 70s F **S of Morgan's Point:** Low to Mid 60s F .

**Visibility:** Lower confidence on timing and coverage, but given southeasterly winds, periods of least patchy fog can be anticipated. **More information can be found on the visibility slide.**

## Precip Image: 9 PM CT



**Wind Speed:**  
1 AM CT



**High Temps**  
Friday

# Houston Pilots: Sat. 2/3/2024



## Forecast Discussion

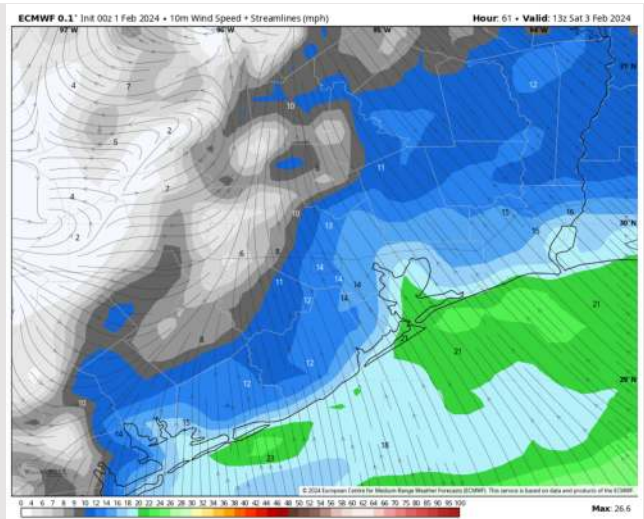
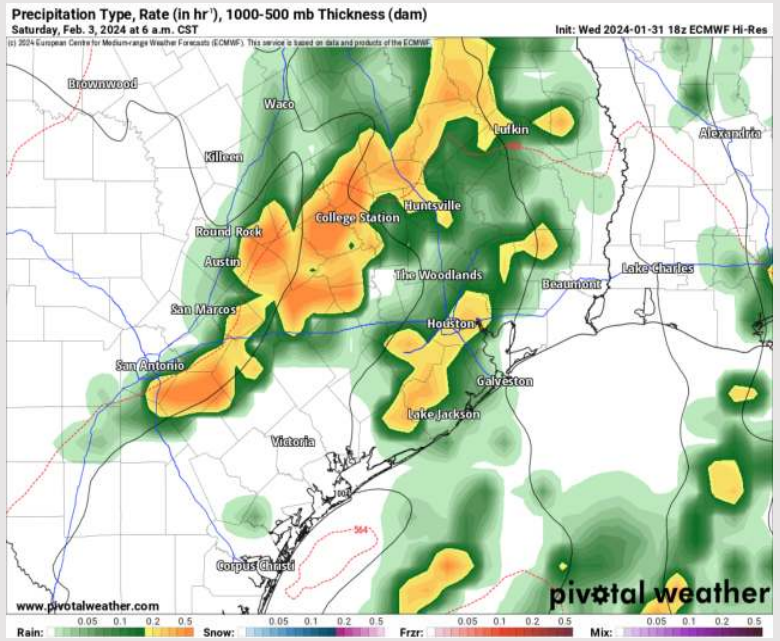
**Precip:** Line of Scattered Storms will push in from the west during the morning hours. A few storms will have severe potential, with 40 – 50 kt gusts to be possible. Storms favored to impact the area between 5AM and 10AM.

**Wind:** Winds will remain out of the southeast before veering out of the southwest after 3PM as the front fully passes the area. **N Morgan's Point:** 7 - 12 kts through 2PM before becoming 3 – 6 kts. **S of Morgan's Point:** Winds will be at 14 – 19 kts though 2 PM, then will decrease to 7- 11 kts for the rest of the evening. Non-Thunderstorm Gusts of 25 - 30 kts cannot be ruled out for all stations through 2PM.

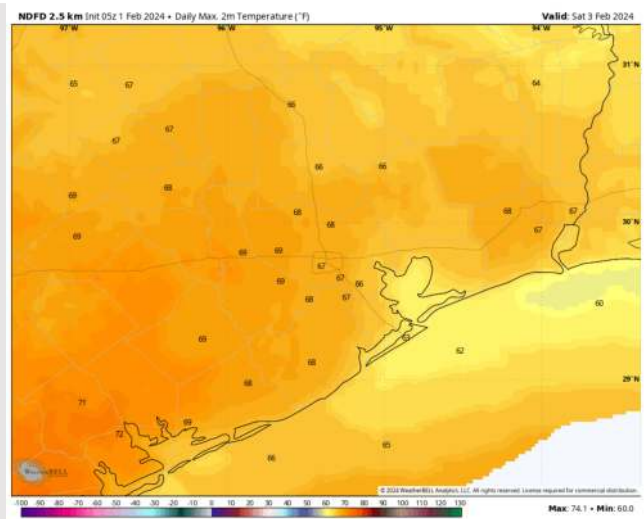
**High Temps:** **N of Morgan's Point:** Low 60s F. **S of Morgan's Point:** Mid to Upper 60s F.

**Visibility:** Patchy fog risks will be in play for Stations S of Morgan's Point prior to arrival of front, but lower confidence on timing.

## Precip Image: 6 AM CT



Wind Speed:  
8 AM CT



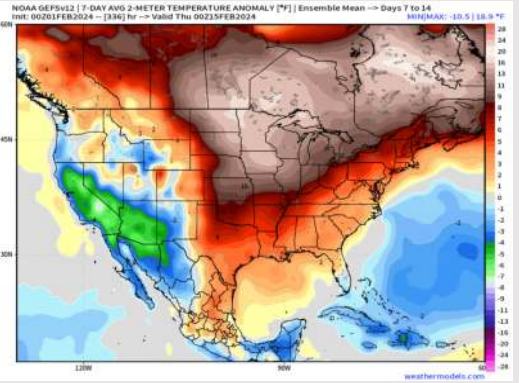
High Temps  
Saturday



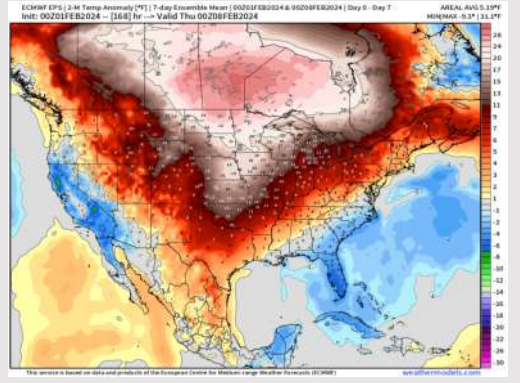
# Houston Pilots: 2/1/24



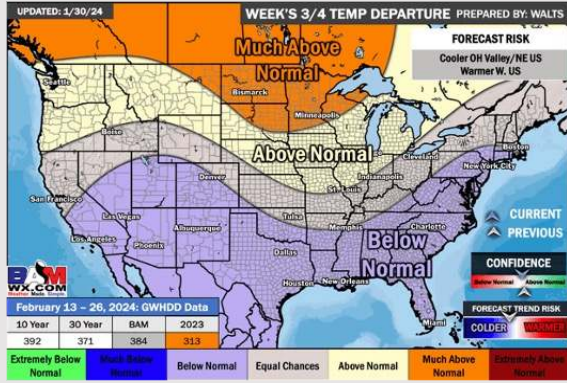
**Next 7 Day Temperature Departure**



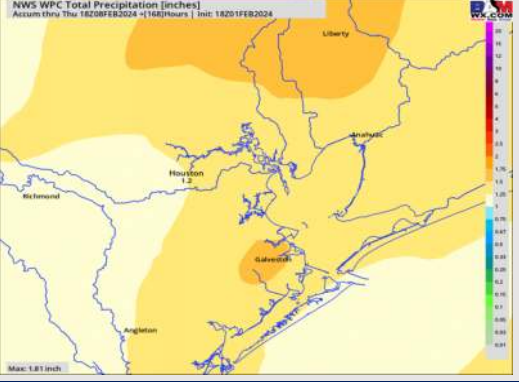
**8-14 Day Temperature Departure**



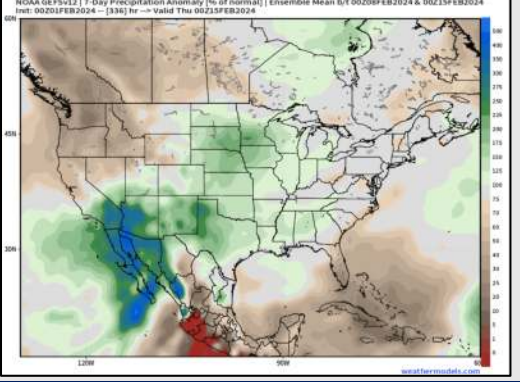
**15-30 Day Temperature Departure**



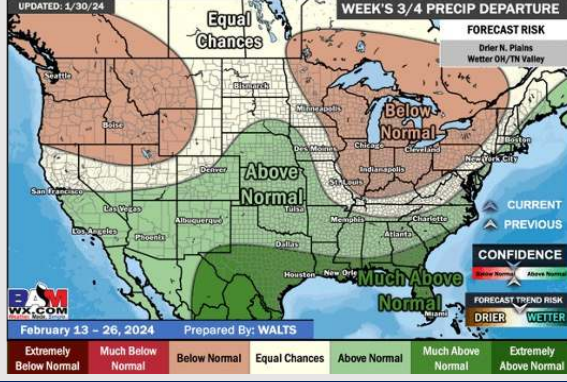
**Next 7 Day Total Precipitation**



**8-14 Day % of Average Precip.**



**15-30 Day % of Average Precip.**



- Drier conditions will continue through Friday AM before pockets of drizzle push in early Friday PM. The best chances for accumulation looks to enter on Saturday. Above normal temperatures favored for the week ahead.
- Seasonable to slightly above normal precipitation chances are at play during the week 2 timeframe. Temps expected to be above normal.
- Below normal temperatures and much above normal chances for precipitation are favored in the weeks 3/4 timeframe.