

Houston Pilots Forecast Package



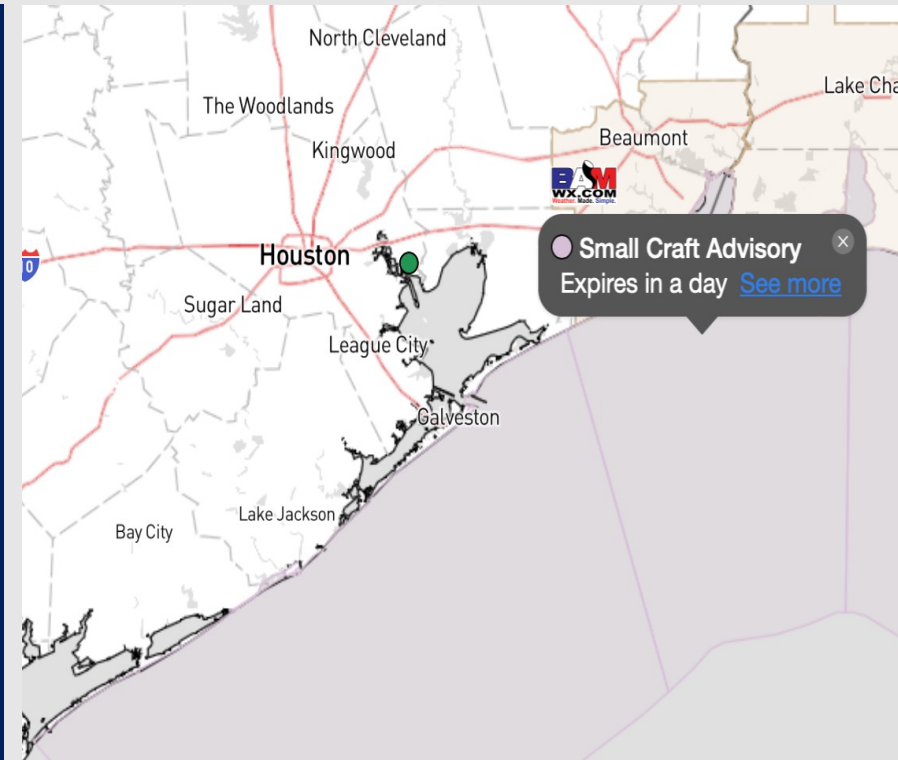
Updated: 2:30 PM CT

Thursday, January 4, 2024

Forecaster: Tyler Riggles

Weather Headlines

- Winds steadily pick up today out ahead of a system on FRI.
- Monitoring potential for 4– 5 wave height Friday afternoon towards the Boarding Station, however confidence remains low.
- **Friday AM will be the next chance of widespread showers and storms, with locally strong gusts of up to 40 - 50 kts.**



Radar/NWS Alerts: 2:24 PM CT



As always, please do not hesitate to reach out to us with any forecast questions via the chat option on the Weather Porthole or our on-call number, **(317)-560-8122** press 1 for forecast questions.

Houston Pilots Extended Range Visibility Report



Sunday 1/7/24

No visibility concerns for Sunday.

Forecast Confidence



Monday 1/8/24

No visibility concerns for Monday.

Forecast Confidence



Tuesday 1/9/24

No visibility concerns for Tuesday.

Forecast Confidence



Chance for Fog

Sunday AM	Unlikely
Sunday PM	Unlikely
Monday AM	Unlikely
Monday PM	Unlikely
Tuesday AM	Unlikely
Tuesday PM	Unlikely

Houston Pilots Visibility Chart (miles)



Forecast Confidence



Time	Thu 1pm	Thu 2pm	Thu 3pm	Thu 4pm	Thu 5pm	Thu 6pm	Thu 7pm	Thu 8pm	Thu 9pm	Thu 10pm	Thu 11pm	Fri 12am	Fri 1am	Fri 2am	Fri 3am	Fri 4am	Fri 5am	Fri 6am	Fri 7am	Fri 8am	Fri 9am	Fri 10am	Fri 11am	Fri 12pm	Fri 1pm	Fri 2pm	Fri 3pm	Fri 4pm	Fri 5pm	Fri 6pm	Fri 7pm	Fri 8pm	Fri 9pm	Fri 10pm	Fri 11pm	Sat 12am			
610 Bridge	10	10	10	10	10	10	10	10	10	10	10	10	10	7	6	6	6	6	3	2	2	3	4	6	8	10	10	10	10	10	10	10	10	10	10	10	10	8	
Kinder 1	10	10	10	10	10	10	10	10	10	10	10	10	10	7	6	6	7	6	5	3	4	3	4	6	7	9	10	10	10	10	10	10	10	10	10	10	10	10	8
Greens Bayou	10	10	10	10	10	10	10	10	10	10	10	10	10	7	6	6	8	7	6	5	5	3	4	6	7	9	10	10	10	10	10	10	10	10	10	10	10	8	
Shell Crude	10	10	10	10	10	10	10	10	10	10	10	10	10	7	6	6	9	8	8	7	7	3	4	6	7	9	10	10	10	10	10	10	10	10	10	10	10	8	
Lynchburg Ferries	10	10	10	10	10	10	10	10	10	10	10	10	10	7	6	6	9	9	9	7	7	3	4	6	6	9	10	10	10	10	10	10	10	10	10	9	10	8	
Exxon 3	10	10	10	10	10	10	10	10	10	10	10	10	10	7	7	6	9	9	9	7	7	4	4	6	6	7	10	10	10	10	10	10	10	10	9	8	8		
Morgans Point	10	10	10	10	10	10	10	10	10	10	10	10	10	7	7	6	9	9	9	9	8	6	4	5	6	7	9	10	10	10	10	10	10	10	9	8	8		
75/76	10	10	10	10	10	10	10	10	10	10	10	10	10	7	7	6	9	9	9	9	7	6	4	5	6	7	9	10	10	10	10	10	9	9	9	8	8		
63/64	10	10	10	10	10	10	10	10	10	10	10	10	9	7	7	6	9	9	9	9	7	7	4	5	6	7	9	9	10	10	10	9	9	9	10	10			
51/52	10	10	10	10	10	10	10	10	10	10	10	10	9	7	7	6	9	9	9	9	7	7	4	4	5	7	9	9	10	10	9	9	9	9	9	10	10		
37/38	10	10	10	10	10	10	10	10	10	10	10	10	9	7	7	6	9	9	9	9	7	6	3	4	7	7	8	9	10	10	9	9	9	9	9	10	10		
25/26	10	10	10	10	10	10	10	10	10	10	10	10	9	7	7	7	9	9	9	9	7	6	4	4	7	7	9	9	9	9	9	9	9	9	10	10	10		
11/12	10	10	10	10	10	10	10	10	10	10	10	10	9	7	7	7	9	9	9	9	7	6	5	4	7	7	8	9	9	9	9	9	9	9	10	10	10		
1 & 2 Bravo	10	10	10	10	10	10	10	10	10	10	9	7	7	7	7	7	9	9	9	9	7	6	6	3	7	7	7	9	9	9	8	9	9	10	10	10			

NOTE: This is automated data that may/may not agree with the official BAM thinking that's found on the daily slides or special visibility report slides. This data should be used as a guide only

Houston Pilots Wind Chart



Forecast Confidence



Example

Sustained wind 13 Knots
Gusts 18 Knots
Wind from the N

WS: 13
G:18
N

Time Knots	Thu 1pm	Thu 2pm	Thu 3pm	Thu 4pm	Thu 5pm	Thu 6pm	Thu 7pm	Thu 8pm	Thu 9pm	Thu 10pm	Thu 11pm	Fri 12am	Fri 1am	Fri 2am	Fri 3am	Fri 4am	Fri 5am	Fri 6am	Fri 7am	Fri 8am	Fri 9am	Fri 10am	Fri 11am	Fri 12pm	Fri 1pm	Fri 2pm	Fri 3pm	Fri 4pm	Fri 5pm	Fri 6pm	Fri 7pm	Fri 8pm	Fri 9pm	Fri 10pm	Fri 11pm	Fri 12am	Sat 12am
610 Bridge	8	8	9	9	8	7	6	7	7	8	9	9	8	8	9	11	11	10	9	6	7	7	7	7	7	7	8	8	7	6	4	4	3	3	2	2	2
	13	14	15	16	18	18	15	16	19	21	22	24	20	21	22	18	17	16	13	10	11	10	10	10	10	11	12	12	10	9	7	6	5	4	3	2	2
	E	ESE	ESE	ESE	ESE	E	E	E	E	ESE	E	E	E	E	ESE	E	E	ENE	ENE	NNE	N	W	N	NNW	NNW	NNW	NW	NW	NW	NW	NW	NW	NNW	NNW	NNW	NNW	NW
Kinder 1	8	8	9	9	7	7	6	7	7	8	9	10	8	8	9	11	11	10	9	7	7	7	7	7	7	8	8	7	6	4	4	3	3	2	2	2	
	13	14	15	16	18	17	15	16	20	21	22	24	20	22	22	18	17	16	14	10	11	10	10	10	10	11	12	12	10	9	7	6	5	4	3	4	4
	E	ESE	ESE	ESE	ESE	E	E	E	ESE	E	E	E	E	ESE	ESE	E	E	ENE	ENE	NNE	N	NW	N	NNW	NNW	NNW	NW	NW	NW	NW	NW	NW	NNW	NNW	NNW	NNW	NW
Greens Bayou	8	8	9	9	7	7	6	7	7	8	9	10	8	9	9	11	11	11	9	7	7	7	7	7	7	8	7	6	5	4	3	3	2	2	2		
	13	13	14	16	17	15	14	15	21	21	22	24	21	22	22	18	17	16	13	11	11	10	10	10	10	10	11	12	12	10	9	7	6	5	4	3	3
	E	ESE	ESE	ESE	ESE	E	E	ESE	ESE	E	E	E	E	ESE	E	E	ENE	ENE	NE	ENE	NNW	N	NNW	NNW	NNW	NW	NW	NW	NW	NW	NW	NNW	NNW	NNW	NNW	NW	
Shell Crude	8	8	9	9	7	7	6	7	8	8	9	10	9	9	9	12	11	11	9	8	7	7	8	7	8	8	7	6	5	4	3	3	2	2	2		
	13	13	15	16	18	15	14	15	21	21	23	24	23	23	23	18	17	17	14	12	11	11	11	10	11	12	12	10	9	7	6	5	4	3	4	4	
	E	ESE	ESE	ESE	ESE	E	E	ESE	ESE	E	E	E	E	ESE	ESE	E	E	ENE	ENE	ENE	ENE	NNW	N	NNW	NNW	NNW	NW	NW	NW	NW	NW	NNW	NNW	NNW	NNW	NW	
Lynchburg Ferries	8	8	9	9	7	6	6	6	6	8	8	9	11	10	10	12	11	11	9	8	7	8	8	8	8	7	8	8	7	6	5	4	4	3	2	3	
	13	13	14	16	17	15	13	14	20	21	23	24	24	24	24	17	17	13	12	11	11	11	11	10	11	12	12	10	9	7	6	6	5	4	4	4	
	E	ESE	ESE	ESE	ESE	E	ESE	ESE	ESE	E	E	E	E	ESE	E	E	ENE	ENE	SE	NW	N	N	NNW	NNW	NNW	NW	NW	NW	NW	NW	NNW	NNW	NNW	NNW	NNW	NW	
Exxon 3	8	8	9	9	7	7	7	7	8	8	10	11	11	11	11	12	12	11	10	9	8	8	8	8	8	8	8	8	7	6	5	5	4	4	3	3	
	13	13	15	16	18	16	16	16	21	21	23	23	23	24	24	17	17	14	13	12	11	11	11	11	12	12	12	11	9	8	7	6	5	4	4	4	
	E	ESE	ESE	ESE	ESE	E	ESE	ESE	ESE	E	E	E	E	E	E	E	E	ENE	NE	S	NNW	NNW	NNW	NNW	NNW	NW	NW	NW	NW	NNW	NNW	NNW	NNW	NNW	NNW	NW	
Morgans Point	8	7	10	10	9	10	10	11	12	12	12	12	12	13	12	13	13	13	12	10	9	9	9	8	8	9	9	9	7	6	5	4	4	4	4		
	13	13	15	17	19	19	19	20	22	22	23	23	23	25	25	17	17	17	16	14	13	12	12	11	12	13	13	13	11	10	8	7	6	5	5	5	
	E	E	ESE	ESE	ESE	E	ESE	ESE	ESE	E	E	E	E	E	E	E	E	ENE	NE	E	NNW	NNW	NNW	NNW	NNW	NW	NW	NW	NW	NNW	NNW	NNW	NNW	NNW	NNW	NW	
75/76	9	7	12	13	13	15	15	16	16	16	16	16	15	15	16	16	15	15	13	12	10	10	10	9	9	10	10	10	11	11	9	8	7	5	4	4	
	14	13	17	19	20	22	22	23	24	24	24	24	24	26	27	18	19	18	18	15	15	13	12	13	12	13	14	14	14	13	11	10	9	7	6	5	5
	E	E	ESE	ESE	E	E	ESE	ESE	ESE	E	E	E	E	E	E	E	E	ENE	E	NE	NNW	NNW	NNW	NNW	NNW	NW	NW	NW	NW	NNW	NNW	NNW	NNW	NNW	NNW	NW	
63/64	9	8	13	15	14	16	16	16	16	16	16	15	16	17	18	17	18	17	16	14	13	11	11	10	10	10	11	11	11	10	9	8	7	6	4	4	
	15	14	18	20	20	22	23	24	25	24	25	24	25	27	28	19	20	20	19	17	17	14	14	13	14	14	14	14	13	11	10	9	8	6	5	5	
	E	E	E	ESE	E	E	ESE	ESE	ESE	E	E	E	E	E	ESE	E	E	E	ENE	S	NNW	NNW	NNW	NNW	NNW	NW	NW	NW	NW	NNW	NNW	NNW	NNW	NNW	NNW	NW	
51/52	10	10	14	15	15	16	16	17	17	16	16	15	15	16	19	17	18	17	16	14	12	11	11	11	10	11	11	11	11	10	9	8	7	6	4	4	
	15	15	19	20	20	22	23	24	25	24	25	24	24	26	29	20	21	19	17	17	15	14	14	14	14	14	14	13	12	10	9	7	6	5	5		
	E	E	E	E	E	E	ESE	ESE	ESE	E	E	E	E	E	ESE	E	E	E	E	ENE	S	NNW	NNW	NNW	NNW	NNW	NW	NW	NW	NW	NNW	NNW	NNW	NNW	NNW	NW	
37/38	11	11	14	15	15	16	16	16	17	16	16	14	14	15	18	17	17	17	16	13	12	11	11	11	11	11	11	11	11	10	9	8	6	6	4	4	
	15	16	18	20	20	22	23	24	25	25	25	24	24	25	28	20	21	22	20	18	17	15	14	14	14	14	13	12	11	10	9	7	6	5	5		
	E	E	E	E	E	E	ESE	ESE	ESE	E	ESE	E	E	E	ESE	E	E	E	E	S	NNW	NNW	NNW	NNW	NNW	NW	NW	NW	NW	NNW	NNW	NNW	NNW	NNW	NNW	NW	
25/26	11	11	14	14	14	15	16	16	16	16	15	14	14	14	16	16	16	16	15	13	12	12	11	11	11	11	11	11	10	9	8	7	6	5	4	4	
	16	16	18	20	20	22	24	24	25	25	25	24	25	25	27	21	21	21	20	19	18	16	14	14	14	14	13	12	11	10	8	7	6	5	5		
	E	E	E	E	E	ESE	ESE	ESE	ESE	E	ESE	E	E	E	ESE	ESE	ESE	ESE	E	E	ESE	SSW	NNW	NNW	NNW	NNW	NW	NW	NW	NW	NNW	NNW	NNW	NNW	NNW	NNW	NW
11/12	13	13	15	16	16	17	18	18	18	18	17	16	17	17	19	17	16	16	15	14	12	12	11	11	11	11	11	11	10	9	8	7	6	5	5		
	16	16	18	20	20	22	24	24	25	25	24	24	25	26	28	21	21	21	21	20	19	17	14	14	14	14	13	12	11	10	9	8	7	6	6	6	
	E	E	E	E	ESE	ESE	ESE	ESE	ESE	ESE	ESE	E	E	E	ESE	ESE	ESE	ESE	E	ESE	ESE	SW	NW	NW	NW	NW	NW	NW	NW	NW	NW	NW	NW	NW	NW	NW	NW
1 & 2 Bravo	15	15	17	18	18	19	21	21	21	21	21	21	20	21	22	20	19	18	18	17	15	13	13	13	13	13	13	13	13	12	11	10	8	7	7		
	17	17	19	20	21	22	24	24	25	24	25	25	26	26	28	22	22	22	22	21	20	18	15	14	14	14	14	13	12	11	10	9	8	7	7		
	E	E	E	E	ESE	ESE	ESE	ESE	ESE	ESE	ESE	ESE	E	E	ESE	ESE	ESE	ESE	E	ESE	ESE	SSE	NW	NW	NW	NW	NW	NW	NW	NW	NW	NW	NW	NW	NW	NW	

NOTE: This is automated data that may/may not agree with the official BAM thinking that's found on the daily slides or special visibility report slides. This data should be used as a guide only

Houston Pilots: Thu. 01/04/2024



Forecast Discussion

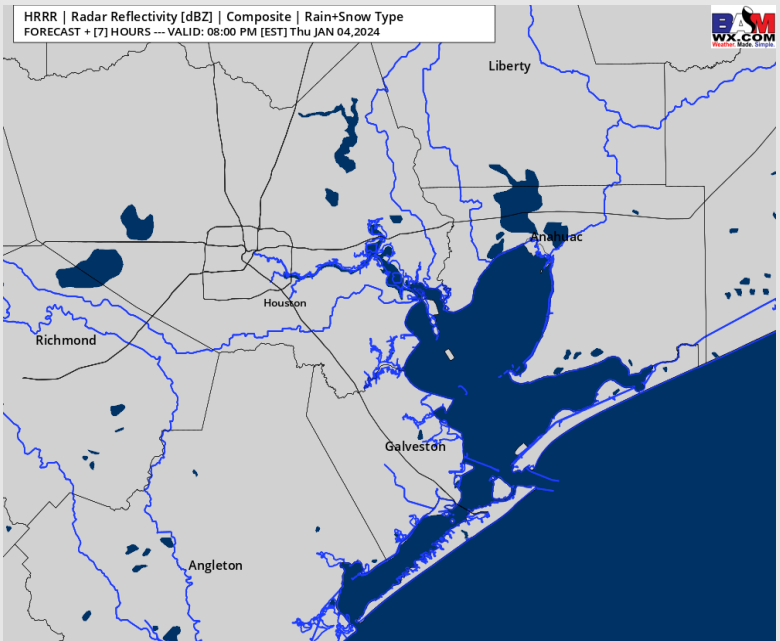
Precip: Dry Conditions are favored for much of the remainder of the day. 10% chances for sprinkles after 10PM-CT will be possible if moisture can move in earlier.

Wind: Winds will remain out of the E for much of the day, becoming out of the ESE by 10PM for all stations. **N Morgan's Point:** 7 - 13 kts for the remainder of the day. **S of Morgan's Point:** 14 - 18 kt winds increasing to 16 - 21 knots by 6 PM. Winds at the Boarding Station a touch higher at 18 - 22 kts by 6 PM. Gusts of 23 - 26 knots cannot be ruled out after 6 PM near the Boarding Station.

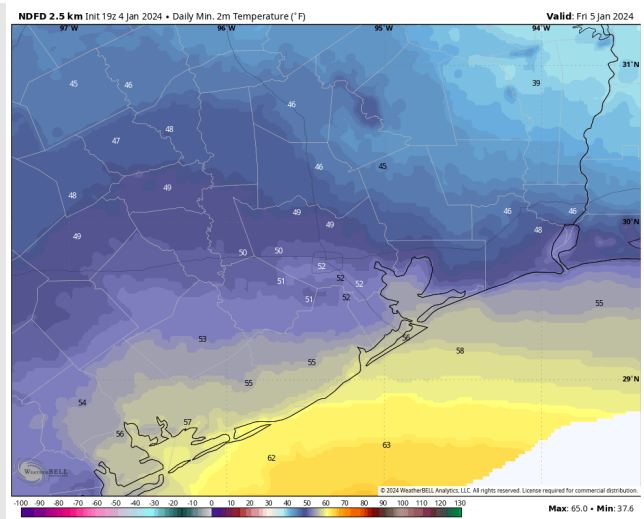
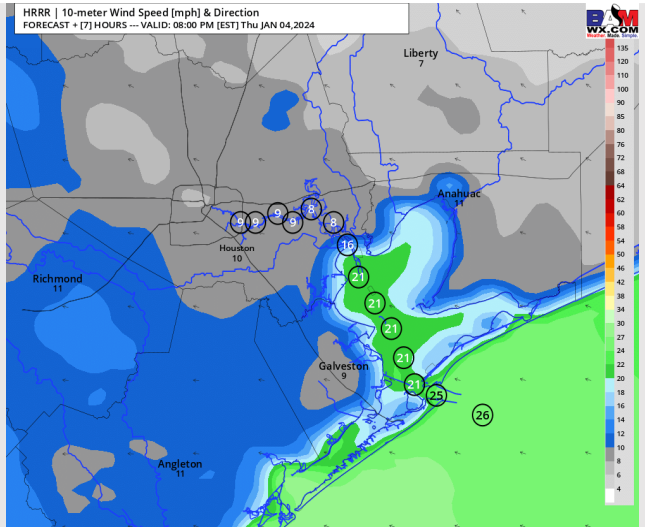
Low Temps: **N of Morgan's Point:** Low 50s F. **S of Morgan's Point:** Mid to upper 50s F.

Visibility: No visibility concerns for the remainder of the day.

Precip Image: 7 PM CT



Wind Speed:
7 PM CT



Low Temps
FRI AM

Houston Pilots: Fri. 01/05/2024



Forecast Discussion

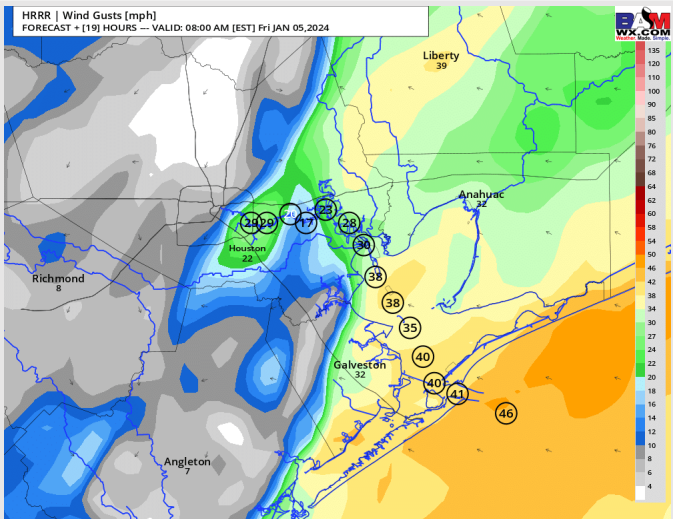
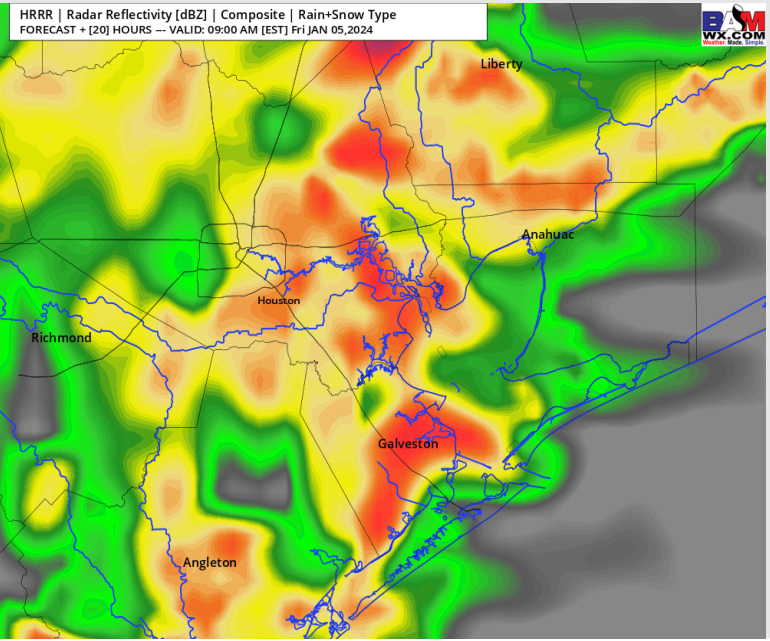
Precip: Favoring light drizzle to be possible between 12AM and 3AM for all stations. Rain showers/ storms will be possible from 4 AM – 10 AM. Favoring majority of rain / storms to exit no later than 12 – 1PM. Similar to the event from WED AM, strong gusts will be a possibility.

Wind: E/SE winds are expected through roughly 10 AM before winds being to shift out of the NW (lower confidence on wind shift timing). **N of Morgan's Point:** 8 -13 kts for most of the day with the exception of 5AM – 10AM when winds increase to 14 – 18 kts. Winds should calm to to 3 – 7 knots after 3 PM. **S of Morgan's Point:** Winds of 18 – 23 kts will be possible before winds calm down after 4 – 6 pm to 8 – 13 knots. **Sustained winds a touch higher towards the boarding station of 21 – 25 kts. Strong storm gusts of 40 – 50 kts can't be ruled out between ~6AM to ~10AM.**

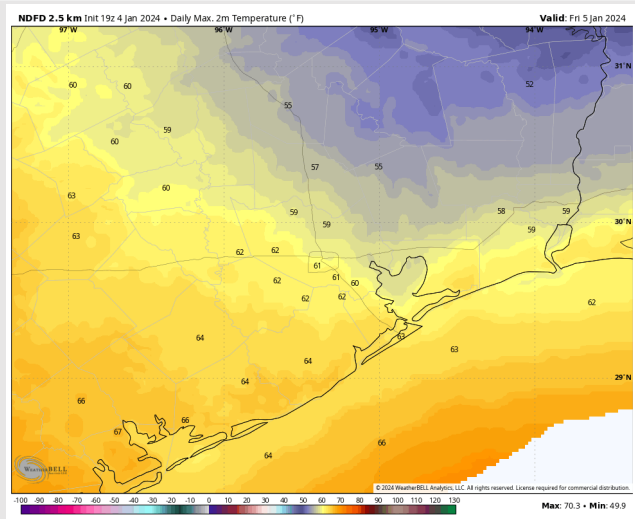
High Temps: **N of Morgan's Point:** Mid 60s F **S of Morgan's Point:** Mid 60s F

Visibility: Not favoring fog concerns at this time, however visibility can be reduced to 2-4 miles under heavy downpours.

Precip Image: 8 AM CT



**Wind Gusts:
7 AM CT**



**High Temps
Friday**

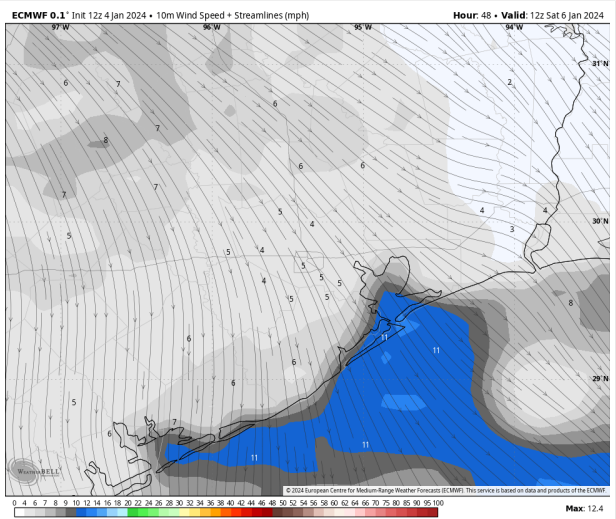
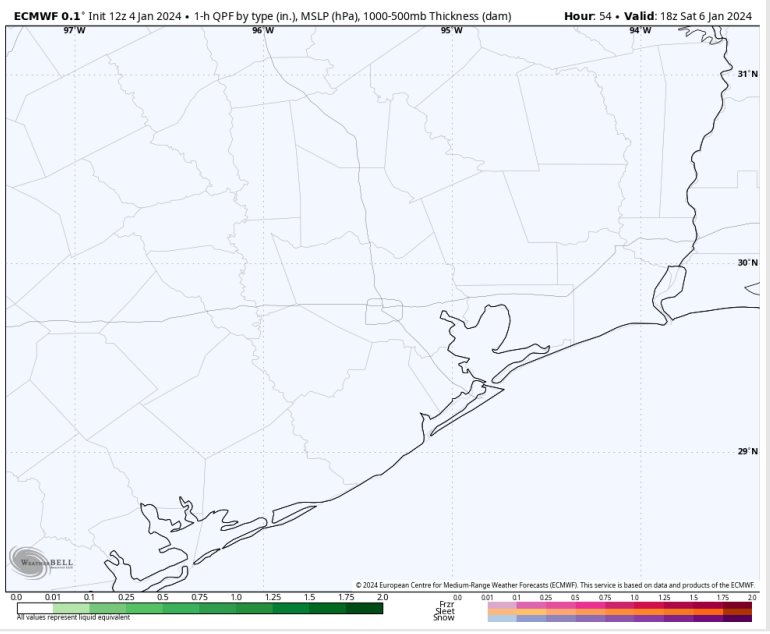
Houston Pilots: Sat. 01/06/2023



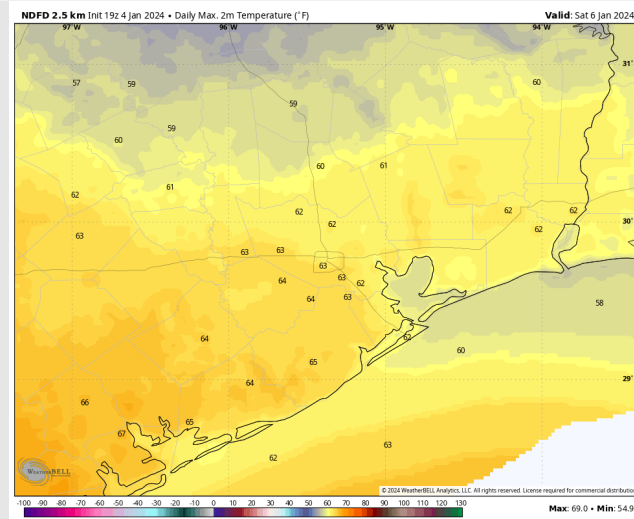
Forecast Discussion

- Precip:** Favoring dry conditions for Saturday.
- Wind:** Winds remain out of the north / northwest for Saturday.
- N Morgan's Point:** Winds calm to 3 – 6 knots for most of the day.
- S of Morgan's Point:** Winds of 8 -12 kts through 2PM, before slightly weakening to 5 – 9 kts.
- High Temps:** N of Morgan's Point: Lower to mid 60s F. S of Morgan's Point: Lower 60s F
- Visibility:** Lower confidence in timing and coverage, but 1AM – 5AM patchy fog for all stations can't be ruled out.

Precip Image: 12 PM CT

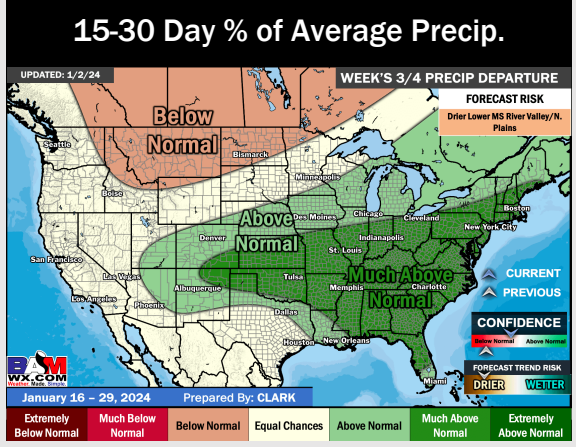
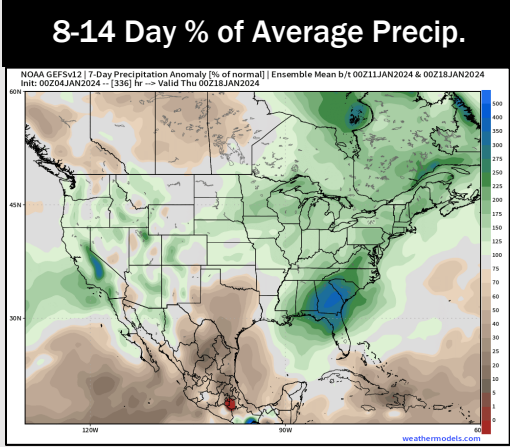
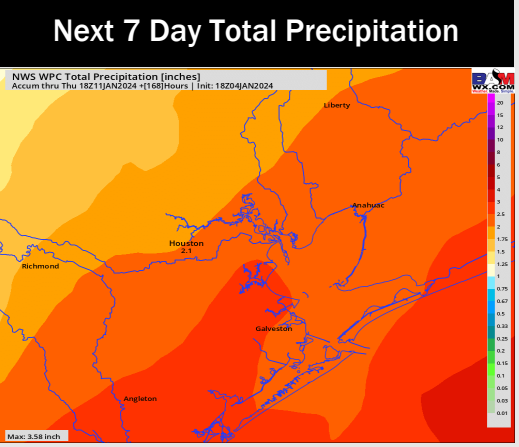
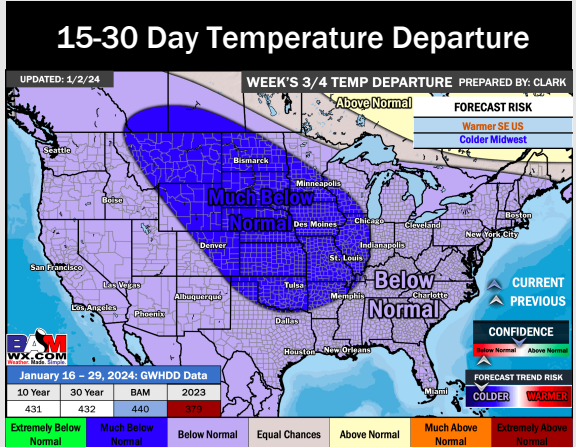
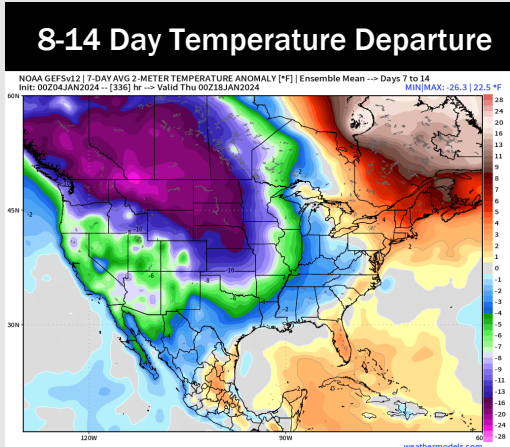
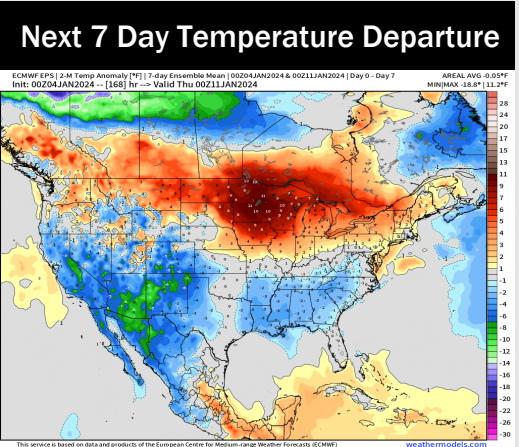


Wind Speed:
6 AM CT



High Temps
Saturday

Houston Pilots: 1/4/24



- Best opportunities for rain will be FRI AM and another on Monday. Some up and down temperatures will be possible this week.
- Periods of up and down temperatures likely continues into the week 2 timeframe with a colder risk. Versus the map above, there is a risk for things to trend wetter.
- Below normal temperatures and seasonal chances for precipitation are favored in the weeks 3/4 timeframe.