

# Houston Pilots Forecast Package



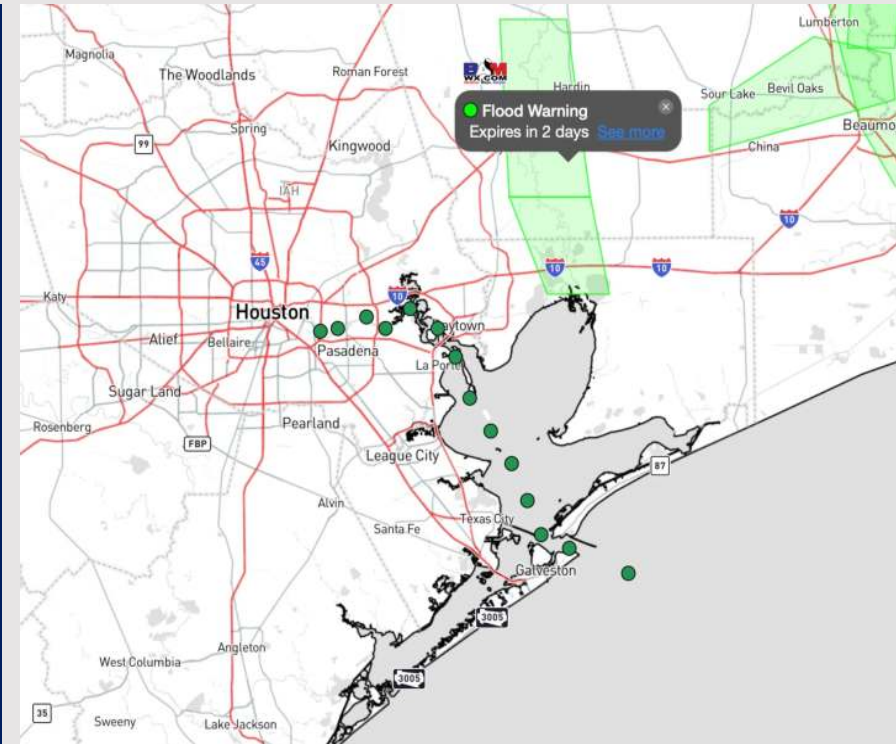
Updated: 2:30 PM CT

Wednesday, January 31, 2024

Forecaster: Alyssa Elliott

## Weather Headlines

- A dry stretch is in store through the rest of this evening and through tomorrow AM. Watching potential for showers and thunderstorms to move in this weekend.
- Winds to remain rather calm over the next few days.
- Lower end, patchy fog risks in play over the next few days. **See Visibility Slide for Additional Information**



**Radar/NWS Alerts: 2:00 PM CT**



As always, please do not hesitate to reach out to us with any forecast questions via the chat option on the Weather Porthole or our on-call number, **(317)-560-8122** press 1 for forecast questions.

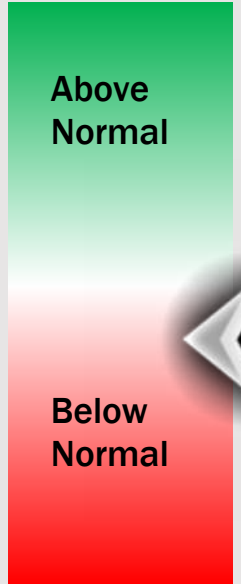
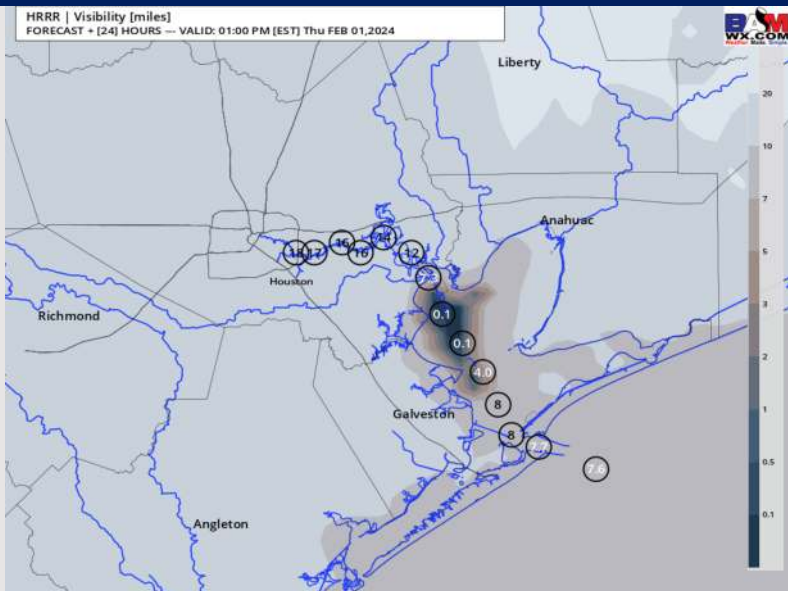
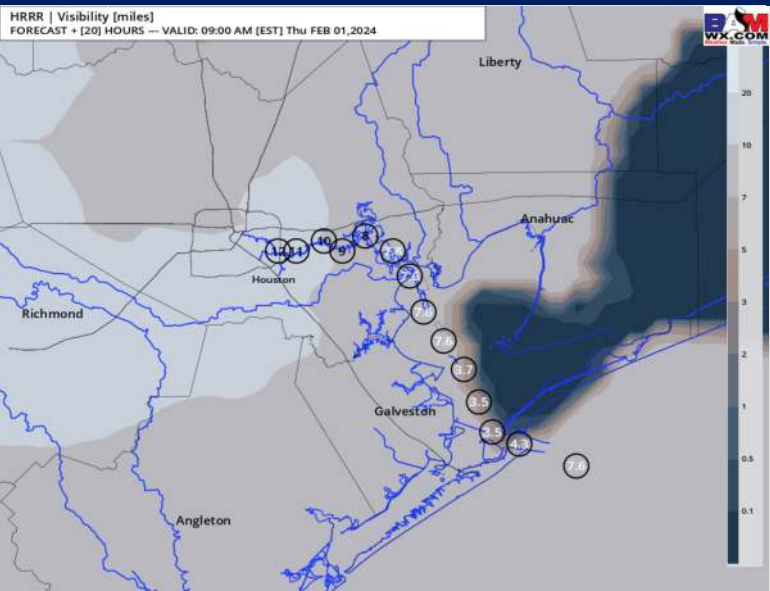
# Houston Pilots Visibility Report



## 8 AM CT THU Visibility

## 12 PM CT THU Visibility

## Confidence



TIMEFRAME DISCUSSED	THREAT
5 AM - 1 PM THU	Medium

- Watching for a patchy fog risk through the late AM tomorrow.
- **N of Morgan's Point:** Anticipating a low cloud deck reducing visibility to 2 - 4 miles in a patchy fashion to be possible Thursday morning as winds will be very calm. This risk is favored to linger through 12 PM-CT.
- **S of Morgan's Point:** Watching for the risk of patchy / patchy dense fog for stations S. of Morgan's Point from 5 AM - 1 PM-CT Thursday. Winds will begin out of the SW Thursday morning, limiting fog development. After 5 AM-CT, winds over the Gulf will shift out of the WSW, allowing for some patchy fog development within Galv. Bay reducing visibility to 1 - 3 miles. The greatest, most "widespread" risk occurring between 8 - 11 AM-CT with visibilities being reduced to 1 mile or less at times.
- Patchy fog can continue after 1PM-CT and into the evening hours. Confidence remains lower on the duration of which fog can continue to remain a risk through the afternoon hours of Thursday. Additional updates to follow.

# Houston Pilots Extended Range Visibility Report



## Saturday 2/3/24

Patchy fog risks will be possible prior to the arrival of a cold front with storm potential.



## Monday 2/5/24

Not favoring fog concerns at this time.



## Sunday 2/4/24

Patchy fog can't be ruled out behind the front that works through the area Sat, with moisture lingering through Sun AM.



## Chance for Fog

Saturday AM	Possible
Saturday PM	Possible
Sunday AM	Possible
Sunday PM	Unlikely
Monday AM	Unlikely
Monday PM	Unlikely

# Houston Pilots Visibility Chart (miles)



## Forecast Confidence



Time	Wed 2pm	Wed 3pm	Wed 4pm	Wed 5pm	Wed 6pm	Wed 7pm	Wed 8pm	Wed 9pm	Wed 10pm	Wed 11pm	Thu 12am	Thu 1am	Thu 2am	Thu 3am	Thu 4am	Thu 5am	Thu 6am	Thu 7am	Thu 8am	Thu 9am	Thu 10am	Thu 11am	Thu 12pm	Thu 1pm	
610 Bridge	10	10	10	10	10	10	10	10	10	10	10	10	10	10	10	10	10	9	9	10	10	10	10	10	
Kinder 1	10	10	10	10	10	10	10	10	10	10	10	10	10	10	10	10	10	9	9	10	10	10	10	10	
Greens Bayou	10	10	10	10	10	10	10	10	10	10	10	10	10	10	10	10	10	7	7	10	10	10	10	10	
Shell Crude	10	10	10	10	10	10	10	10	10	10	10	10	10	10	10	10	10	7	7	10	10	10	10	10	
Lynchburg Ferries	10	10	10	10	10	10	10	10	10	10	10	10	10	10	10	10	10	7	7	10	10	10	10	10	
Exxon 3	10	10	10	10	10	10	10	10	10	10	10	10	10	10	10	10	10	7	7	10	10	10	10	10	
Morgans Point	10	10	10	10	10	10	10	10	10	10	10	10	10	10	9	10	10	6	7	10	10	10	10	10	
75/76	10	10	10	10	10	10	10	10	10	10	10	10	9	7	0.8	8	8	8	8	8	8	9	10	10	10
63/64	10	10	10	10	10	10	10	10	10	10	10	10	9	7	0.8	8	8	8	8	8	8	9	9	9	9
51/52	10	10	10	10	10	10	10	10	10	10	10	10	9	7	6	9	8	8	8	8	8	8	8	9	9
37/38	10	10	10	10	10	10	10	10	10	10	10	10	9	7	7	9	8	8	7	7	7	7	7	8	9
25/26	10	10	10	10	10	10	10	10	10	10	10	10	9	7	9	9	8	8	7	7	7	7	6	7	8
11/12	10	10	10	10	10	10	10	10	10	10	10	10	9	7	9	9	8	8	7	7	5	5	5	6	7
1 & 2 Bravo	10	10	10	10	10	10	10	10	10	10	10	9	7	7	9	8	8	8	8	8	8	6	7	7	7

**NOTE: This is automated data that may/may not agree with the official BAM thinking that's found on the daily slides or special visibility report slides. This data should be used as a guide only**

# Houston Pilots Wind Chart



## Forecast Confidence



Sustained wind 13 Knots  
Gusts 18 Knots  
Wind from the N

## Example

WS: 13  
G:18  
N

Time Knots	Wed 2pm	Wed 3pm	Wed 4pm	Wed 5pm	Wed 6pm	Wed 7pm	Wed 8pm	Wed 9pm	Wed 10pm	Wed 11pm	Thu 12am	Thu 1am	Thu 2am	Thu 3am	Thu 4am	Thu 5am	Thu 6am	Thu 7am	Thu 8am	Thu 9am	Thu 10am	Thu 11am	Thu 12pm	Thu 1pm
610 Bridge	3	3	4	4	4	4	3	3	3	2	2	2	2	2	2	1	2	2	3	4	5	5	6	7
	6	5	5	5	7	7	6	6	5	4	4	4	3	4	3	3	3	4	5	7	8	10	11	12
Kinder 1	ENE	E	E	ESE	SE	SSE	SSE	S	S	S	S	SSE	SSE	S	S	SE	ESE	ESE	ESE	ESE	SE	SE	SSE	SSE
	3	3	4	4	4	4	3	3	3	2	2	2	2	2	2	1	2	2	3	4	5	6	6	7
Greens Bayou	6	5	5	5	7	7	6	6	5	4	4	4	3	4	3	3	3	4	5	8	8	11	11	12
	ENE	E	E	SE	SE	SSE	SSE	S	S	S	S	SSE	SSE	S	S	SE	ESE	ESE	ESE	ESE	SE	SE	SE	SSE
Shell Crude	3	3	3	4	4	4	3	3	3	2	2	1	1	2	2	1	2	2	3	4	5	6	7	7
	6	5	5	5	8	7	6	6	6	4	4	4	3	4	3	3	3	4	6	7	9	11	12	12
Lynchburg Ferries	ENE	E	ESE	SE	SE	SSE	SSE	S	S	S	SSE	SSE	S	SSE	S	SE	ESE	ESE	ESE	SE	SE	SE	SE	SE
	3	3	3	4	4	4	3	3	3	2	2	1	1	1	1	1	1	2	3	4	5	6	7	7
Exxon 3	6	5	5	6	7	7	6	6	6	4	4	3	3	3	3	2	3	4	6	8	9	10	12	12
	E	ESE	SE	SE	SSE	SSE	SSE	SSE	S	S	SSE	SSE	SE	SSE	SSE	SE	ESE	ESE	ESE	ESE	SE	SE	SE	SSE
Morgans Point	3	4	5	5	5	5	5	4	3	3	3	2	2	2	2	2	2	3	4	4	5	7	7	7
	6	6	6	8	8	7	7	6	6	5	4	4	4	4	3	3	4	5	7	7	9	11	12	13
75/76	ESE	ESE	SE	SSE	SSE	SSE	SSE	S	S	S	SSE	SSE	SE	SSE	SSE	ESE	ESE	ESE	E	ESE	ESE	SE	SE	SE
	4	5	7	8	9	7	7	7	5	4	4	3	3	3	3	4	4	5	7	7	7	7	7	8
63/64	8	9	10	12	13	11	11	9	8	6	5	5	4	4	4	5	6	7	9	10	12	13	14	15
	SE	SSE	SSE	SSE	SSE	SSE	SSE	S	S	S	S	SSE	SE	SE	SSE	ESE	ESE	ESE	ESE	ESE	SE	SE	SE	SE
51/52	3	5	6	7	8	7	7	5	5	4	3	3	3	2	3	3	3	4	6	7	7	7	7	8
	6	7	9	11	12	11	10	8	6	5	4	4	4	4	4	4	5	6	9	10	12	14	14	14
37/38	SE	SE	SSE	SSE	SSE	SSE	S	S	S	S	SSE	SSE	SE	SSE	SSE	ESE	ESE	ESE	ESE	ESE	SE	SE	SE	SE
	3	4	5	6	7	5	4	4	4	3	3	2	1	1	1	1	2	3	5	7	7	7	8	7
25/26	6	7	7	9	10	8	7	6	6	4	4	3	2	3	3	3	4	6	8	10	11	12	14	13
	E	SE	SSE	SSE	SSE	SSE	SSE	S	S	S	SSE	SSE	SE	SSE	SSE	ESE	ESE	ESE	ESE	ESE	ESE	SE	SE	SE
11/12	3	4	5	6	7	5	4	4	4	3	3	2	1	1	1	1	2	3	5	7	7	7	8	7
	6	7	7	9	10	8	7	6	6	4	4	3	2	3	3	3	4	6	8	10	11	12	14	13
1 & 2 Bravo	ENE	SE	SSE	SSE	SSE	SSE	SSE	S	S	S	SSE	SSE	SE	SE	SE	ESE	E	ESE	ESE	ESE	ESE	SE	SE	SE
	3	3	4	4	4	3	3	3	3	2	2	1	1	1	1	1	2	3	5	6	7	8	9	8
1 & 2 Bravo	6	5	5	5	5	5	5	5	4	4	4	3	3	3	3	3	4	5	8	9	11	12	13	12
	N	ESE	SSE	SSE	SSE	SSE	SSE	S	S	S	SSE	SSE	SE	SE	SE	E	ESE	ESE	ESE	ESE	ESE	SE	SE	SE
1 & 2 Bravo	3	3	5	5	5	5	4	5	4	4	3	3	3	3	3	3	5	5	7	7	9	9	8	8
	6	5	7	6	8	7	7	7	7	6	5	4	4	5	4	5	6	8	10	11	13	13	13	12
1 & 2 Bravo	NW	S	SSE	SSE	SE	SSE	SSE	S	SSE	SSE	SSE	SE	SE	SE	SE	ESE	ESE	ESE	ESE	ESE	ESE	ESE	ESE	ESE

**NOTE: This is automated data that may/may not agree with the official BAM thinking that's found on the daily slides or special visibility report slides. This data should be used as a guide only**



## Forecast Discussion

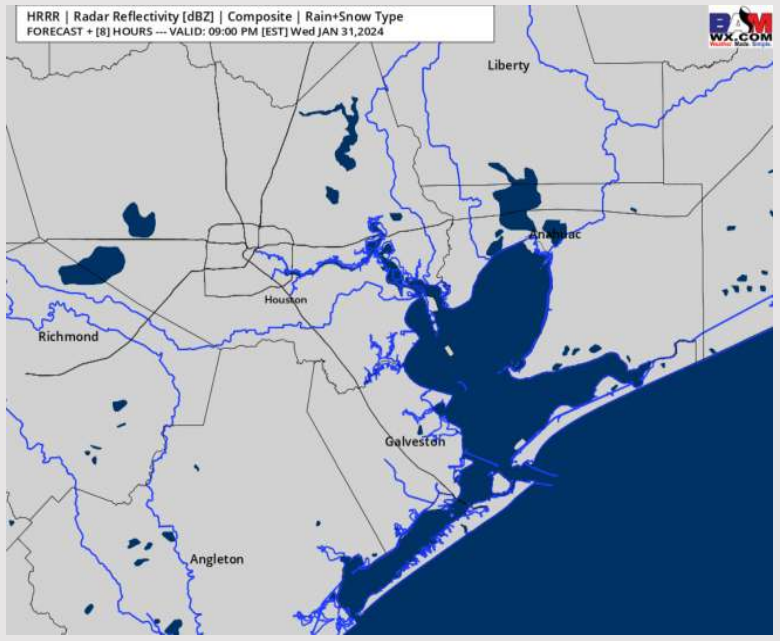
**Precip:** Favoring dry conditions for today.

**Wind:** Winds this evening will remain slightly variable N of Morgan's Point and out of the SW S of Morgan's Point. **N Morgan's Point:** 1-6 kts the rest of the day. **S of Morgan's Point:** Winds will be at 1 - 6 kts though 6 PM, then will increase slightly to 5 - 10 kts for the rest of the evening. Gusts of 12 kts cannot be ruled out for all stations through the evening.

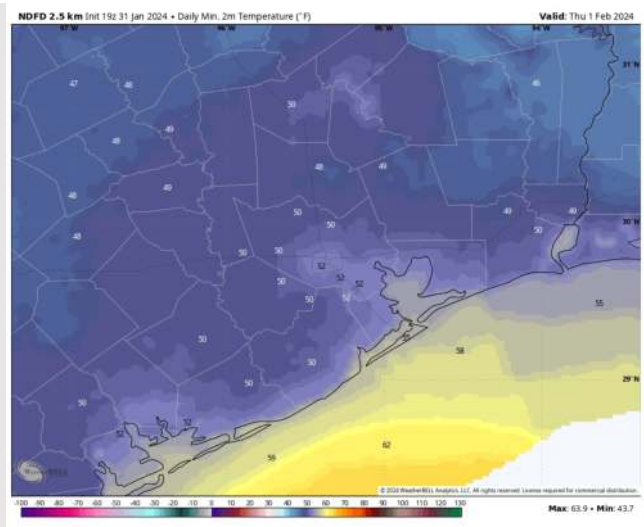
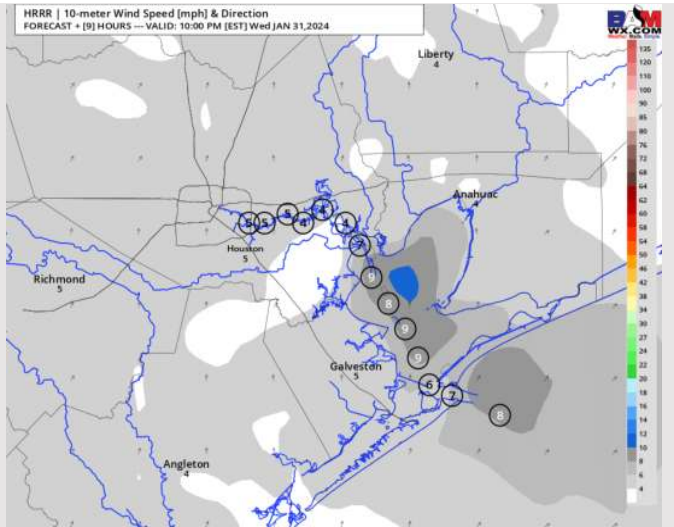
**Low Temps:** **N of Morgan's Point:** Low 50s F. **S of Morgan's Point:** Mid to Upper 50s F.

**Visibility:** Not anticipating a fog risk for this evening. Patchy fog threat favored to hold off until Thursday AM.

## Precip Image: 8 PM CT



Wind Speed:  
9 PM CT



Low Temps  
THU AM

# Houston Pilots: Thu. 2/1/2024



## Forecast Discussion

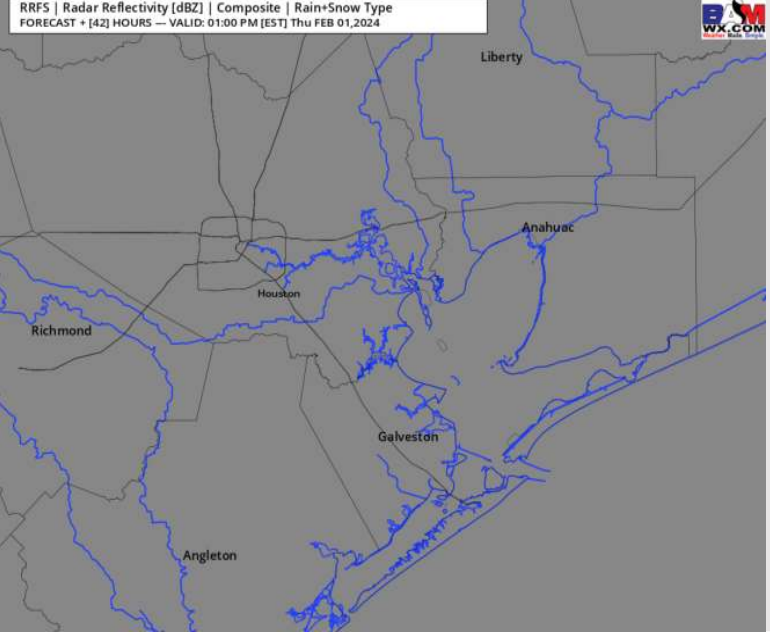
**Precip:** Dry conditions favored for Thursday AM / early PM. Watching risk for late PM drizzle, but confidence remains low.

**Wind:** Winds will be variable N of Morgan's Point through 7 AM-CT while winds S of Morgan's Point will be out of the S through 5 AM-CT before shifting out of the ESE. **N of Morgan's Point:** 1-6 kts through 12 PM then winds increase to 7 - 12 kts thereafter, continuing until 10 PM when they again drop to 1 - 6 kts. **S of Morgan's Point:** Winds will be calm to 1 - 6 kts through much of the AM, shifting to 7 - 12 kts after 1 PM and for the rest of the day.

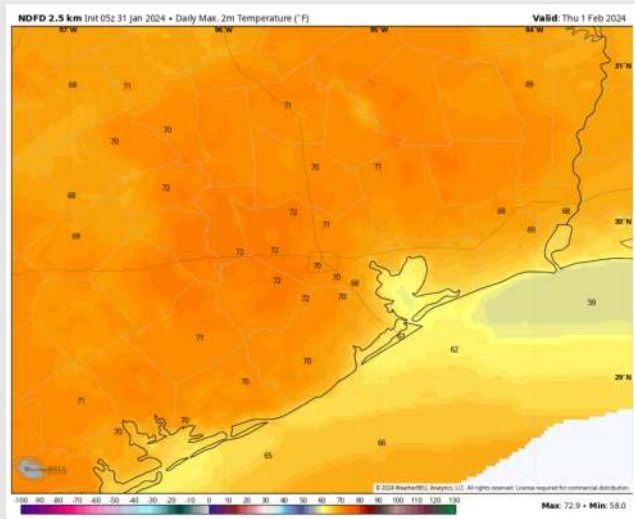
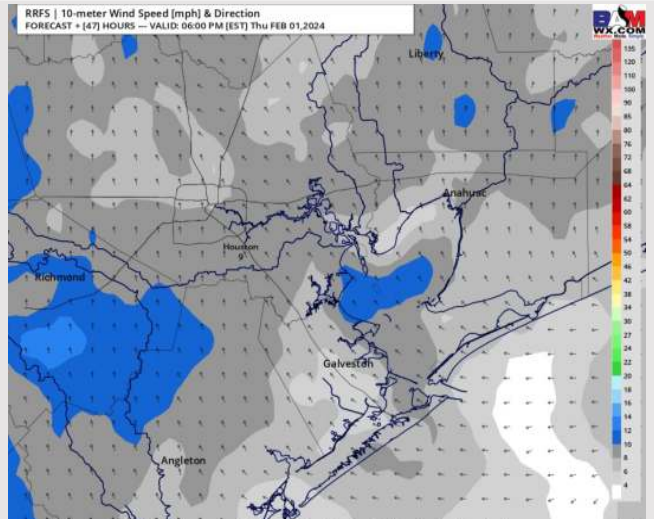
**High Temps:** **N of Morgan's Point:** High 60s to lower 70s F. **S of Morgan's Point:** Low 60s F

**Visibility:** Confidence increasing for patchy fog concerns for stations S of Morgan's Point. **See Visibility Slide for more details.**

## Precip Image: 12 PM CT



Wind Speed:  
6 PM CT



High Temps  
Thursday



# Houston Pilots: Fri. 2/2/2024



## Forecast Discussion

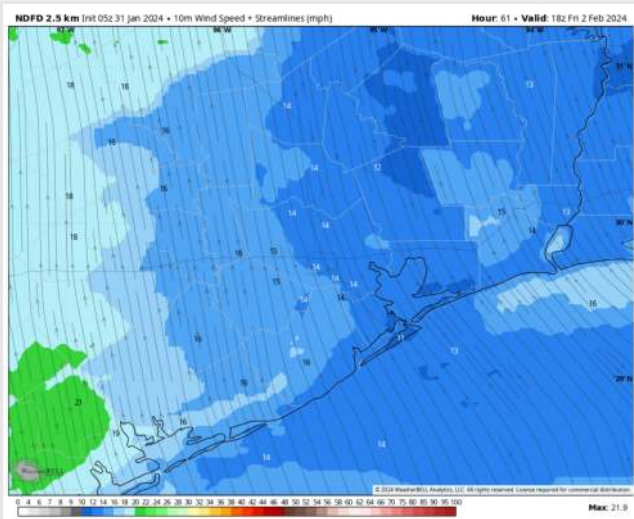
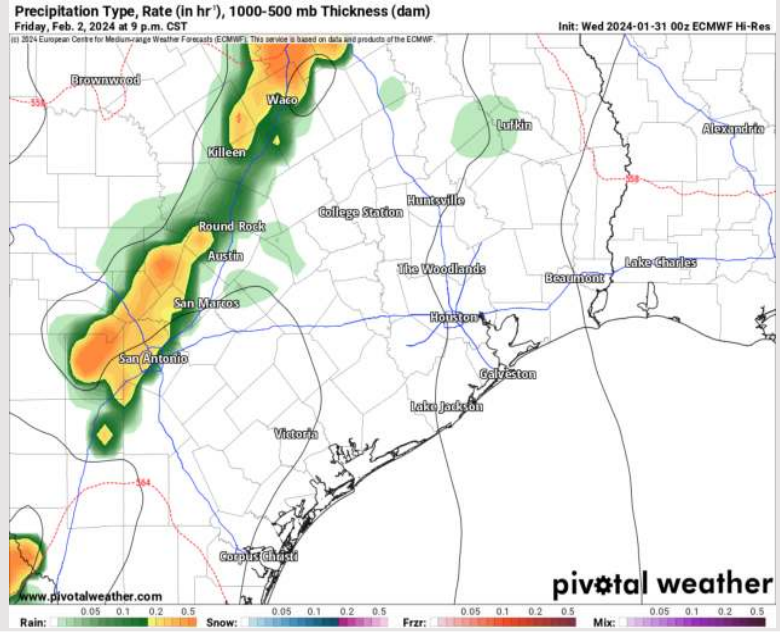
**Precip:** Pockets of drizzle will be possible through 9 AM-CT. Then dry conditions favored for the rest of the day, as potential storms associated with front expected to arrive early Saturday AM. Let's keep an eye on earlier trends.

**Wind:** Winds will remain out of the southeast for the entire day. **N Morgan's Point:** Will start the day at 3 – 7 kts before increasing to 6 – 11 kts after 12PM for the remainder of the day. **S of Morgan's Point:** 8 – 14 kts for the entire day.

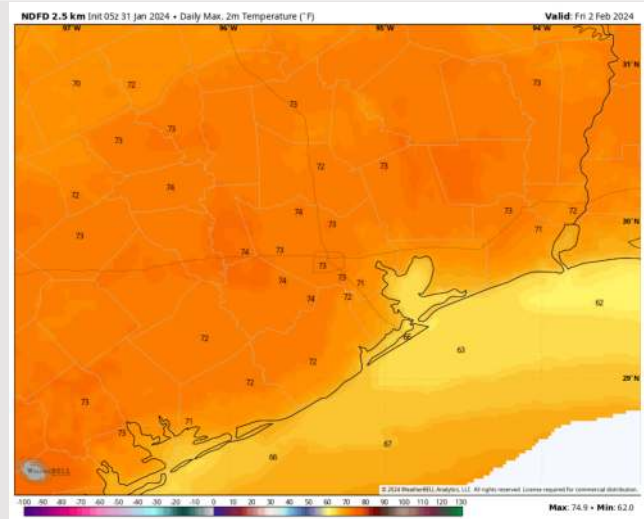
**High Temps:** **N of Morgan's Point:** Lower 70s F **S of Morgan's Point:** Low to Mid 60s F .

**Visibility:** Lower confidence on timing and coverage, but given southeasterly winds, periods of at least patchy fog will be favored.

## Precip Image: 9 PM CT



Wind Speed:  
12 PM CT



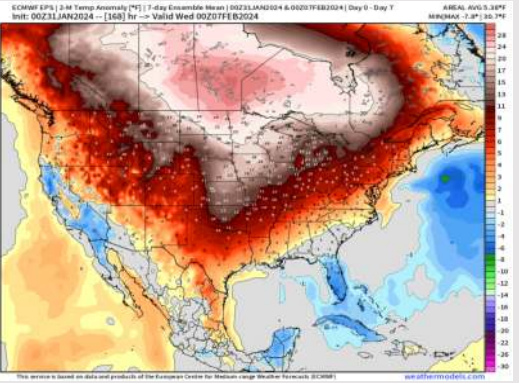
High Temps  
Friday



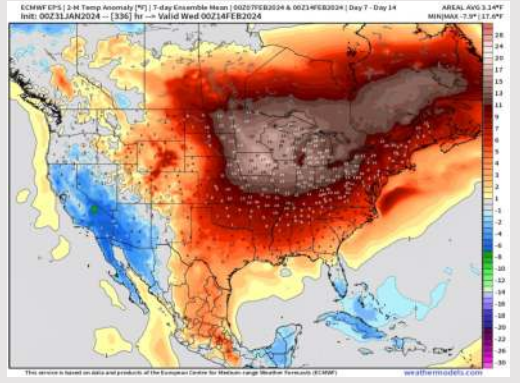
# Houston Pilots: 1/31/24



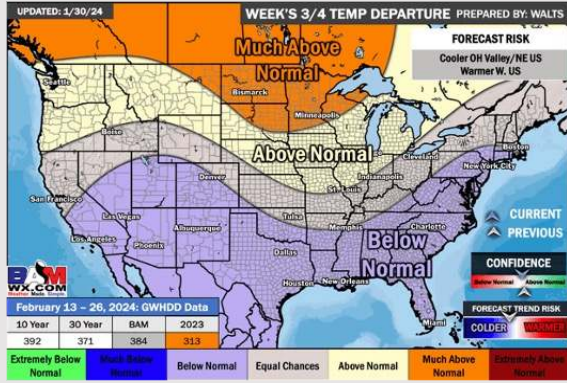
**Next 7 Day Temperature Departure**



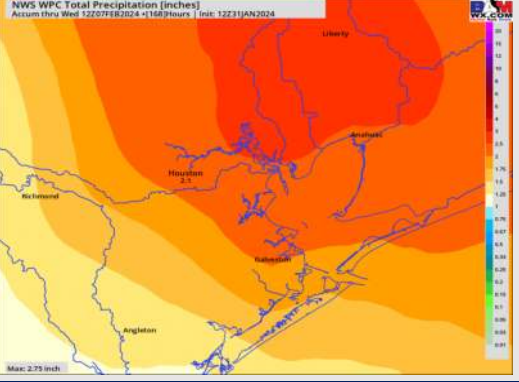
**8-14 Day Temperature Departure**



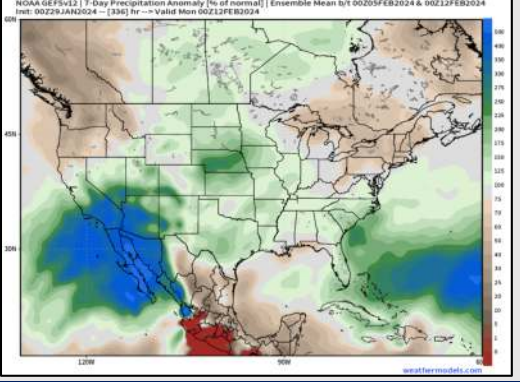
**15-30 Day Temperature Departure**



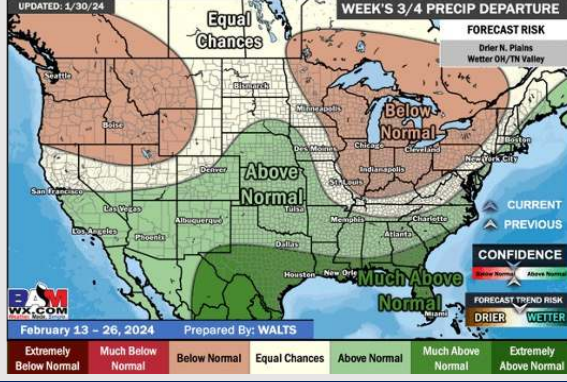
**Next 7 Day Total Precipitation**



**8-14 Day % of Average Precip.**



**15-30 Day % of Average Precip.**



- Drier conditions will continue through tomorrow PM before drizzle can press into the area. The best chances for accumulation looks to enter on Saturday. Above normal temperatures favored for the week ahead.
- Above normal precipitation chances are at play during the week 2 timeframe. Temps expected to be above normal as well.
- Below normal temperatures and much above normal chances for precipitation are favored in the weeks 3/4 timeframe.