

# Houston Pilots Forecast Package



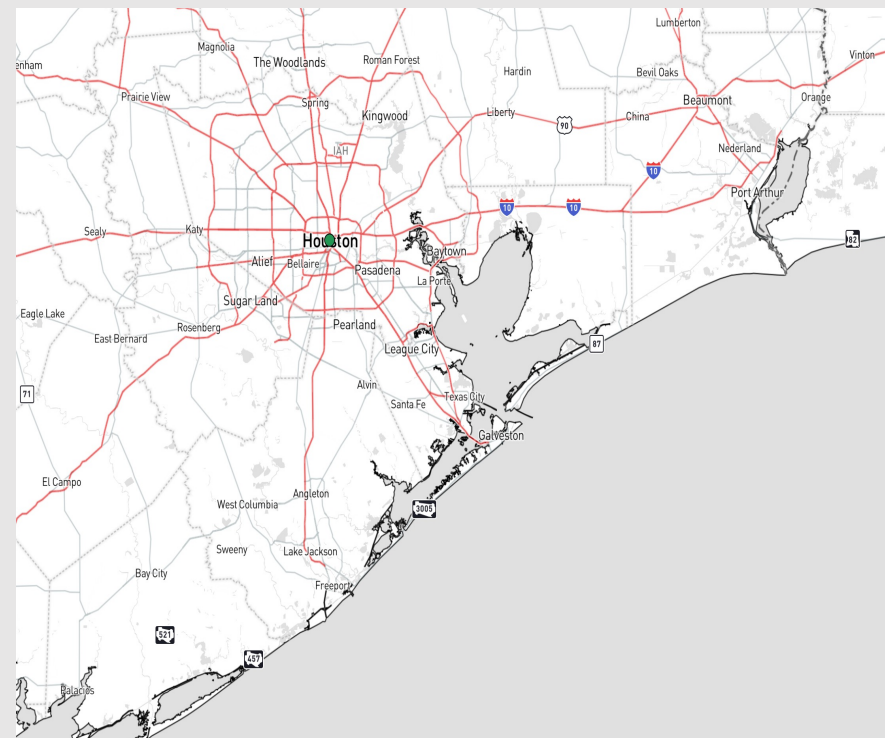
Updated: 2:00 PM CT

Wednesday, January 3, 2024

Forecaster: Matt Griffin

## Weather Headlines

- Winds steadily pick up tomorrow out ahead of a system on FRI.
- Low end potential for fog THU AM and FRI AM – leaning towards no fog on both AM's however.
- Friday AM will be the next chance of scattered showers as a front approaches the area.



**Radar/NWS Alerts: 2:00 PM CT**



As always, please do not hesitate to reach out to us with any forecast questions via the chat option on the Weather Porthole or our on-call number, **(317)-560-8122** press **1** for forecast questions.

# Houston Pilots Extended Range Visibility Report



## Saturday 1/6/24

No visibility concerns for Saturday.

### Forecast Confidence



## Monday 1/8/24

No visibility concerns for Monday.

### Forecast Confidence



## Sunday 1/7/24

No visibility concerns for Sunday.

### Forecast Confidence



## Chance for Fog

Saturday AM	Unlikely
Saturday PM	Unlikely
Sunday AM	Unlikely
Sunday PM	Unlikely
Monday AM	Unlikely
Monday PM	Unlikely

# Houston Pilots Visibility Chart (miles)



**Forecast Confidence**

Above Normal

Below Normal

Time	Wed 1pm	Wed 2pm	Wed 3pm	Wed 4pm	Wed 5pm	Wed 6pm	Wed 7pm	Wed 8pm	Wed 9pm	Wed 10pm	Wed 11pm	Thu 12am	Thu 1am	Thu 2am	Thu 3am	Thu 4am	Thu 5am	Thu 6am	Thu 7am	Thu 8am	Thu 9am	Thu 10am	Thu 11am	Thu 12pm	Thu 1pm	Thu 2pm	Thu 3pm	Thu 4pm	Thu 5pm	Thu 6pm	Thu 7pm	Thu 8pm	Thu 9pm	Thu 10pm	Thu 11pm	Fri 12am		
610 Bridge	10	10	10	10	10	10	10	10	10	10	10	10	10	10	10	10	10	10	10	10	10	10	10	10	10	10	10	10	10	10	10	10	10	10	10	10	10	10
Kinder 1	10	10	10	10	10	10	10	10	10	10	10	10	10	10	10	10	10	10	10	10	10	10	10	10	10	10	10	10	10	10	10	10	10	10	10	10	10	10
Greens Bayou	10	10	10	10	10	10	10	10	10	10	10	10	10	10	10	10	10	10	10	10	10	10	10	10	10	10	10	10	10	10	10	10	10	10	10	10	10	10
Shell Crude	10	10	10	10	10	10	10	10	10	10	10	10	10	10	10	10	10	10	10	10	10	10	10	10	10	10	10	10	10	10	10	10	10	10	10	10	10	10
Lynchburg Ferries	10	10	10	10	10	10	10	10	10	10	10	10	10	10	10	10	10	10	10	10	10	10	10	10	10	10	10	10	10	10	10	10	10	10	10	10	10	10
Exxon 3	10	10	10	10	10	10	10	10	10	10	10	10	10	10	10	10	10	10	10	10	10	10	10	10	10	10	10	10	10	10	10	10	10	10	10	10	10	10
Morgans Point	10	10	10	10	10	10	10	10	10	10	10	10	10	10	10	10	10	10	10	10	10	10	10	10	10	10	10	10	10	10	10	10	10	10	10	10	10	10
75/76	10	10	10	10	10	10	10	10	10	10	10	10	10	10	10	10	10	10	10	10	10	10	10	10	10	10	10	10	10	10	10	10	10	10	10	10	10	10
63/64	10	10	10	10	10	10	10	10	10	10	10	10	10	10	10	10	10	10	10	10	10	10	10	10	10	10	10	10	10	10	10	10	10	10	10	10	10	10
51/52	10	10	10	10	10	10	10	10	10	10	10	10	10	10	10	10	10	10	10	10	10	10	10	10	10	10	10	10	10	10	10	10	10	10	10	10	10	10
37/38	10	10	10	10	10	10	10	10	10	10	10	10	10	10	10	10	10	10	10	10	10	10	10	10	10	10	10	10	10	10	10	10	10	10	10	10	10	10
25/26	10	10	10	10	10	10	10	10	10	10	10	10	10	10	10	10	10	10	10	10	10	10	10	10	10	10	10	10	10	10	10	10	10	10	10	10	10	10
11/12	10	10	10	10	10	10	10	10	10	10	10	10	10	10	10	10	10	10	10	10	10	10	10	10	10	10	10	10	10	10	10	10	10	10	10	10	10	10
1 & 2 Bravo	10	10	10	10	10	10	10	10	10	10	10	10	10	10	10	10	10	10	10	10	10	10	10	10	10	10	10	10	10	10	10	10	10	10	10	10	10	10

**NOTE: This is automated data that may/may not agree with the official BAM thinking that's found on the daily slides or special visibility report slides. This data should be used as a guide only**

# Houston Pilots Wind Chart



## Forecast Confidence



## Example

Sustained wind 13 Knots  
Gusts 18 Knots  
Wind from the N

WS: 13  
G:18  
N

Time Knots	Wed 1pm	Wed 2pm	Wed 3pm	Wed 4pm	Wed 5pm	Wed 6pm	Wed 7pm	Wed 8pm	Wed 9pm	Wed 10pm	Wed 11pm	Thu 12am	Thu 1am	Thu 2am	Thu 3am	Thu 4am	Thu 5am	Thu 6am	Thu 7am	Thu 8am	Thu 9am	Thu 10am	Thu 11am	Thu 12pm	Thu 1pm	Thu 2pm	Thu 3pm	Thu 4pm	Thu 5pm	Thu 6pm	Thu 7pm	Thu 8pm	Thu 9pm	Thu 10pm	Thu 11pm	Fri 12am	
610 Bridge	4	4	5	5	4	2	3	3	4	3	2	2	2	2	2	2	3	3	3	4	6	6	7	8	9	9	9	9	9	10	10	10	10	10	10	11	12
	8	7	8	8	8	8	8	8	8	9	7	6	6	6	5	4	4	5	5	6	9	10	11	12	13	13	14	14	14	14	14	15	15	16	16	17	18
	NNE	NW	ESE	NNE	ENE	NNW	NNW	NNW	ENE	ENE	E	NNE	NNE	NNE	NNE	NE	NE	ENE	ENE	ENE	E	E	E	E	ESE	ESE	ESE	ESE	ESE	ESE	ESE	ESE	ESE	ESE	ESE	ESE	
Kinder 1	4	4	5	5	4	2	3	3	4	3	2	2	2	2	2	2	3	3	4	4	6	6	7	8	9	9	9	9	9	9	9	9	10	10	10	11	12
	8	7	8	8	8	8	8	8	9	9	6	7	6	6	6	5	4	4	5	5	6	9	10	11	12	13	13	14	14	14	14	14	14	15	16	17	18
	NE	SW	ENE	NNE	NNE	SSE	NNW	WNW	NNE	SSE	NE	NNE	NNE	NNE	NNE	NE	NE	ENE	ENE	ENE	E	E	E	E	ESE	ESE	ESE	ESE	ESE	ESE	ESE	ESE	ESE	ESE	ESE	ESE	
Greens Bayou	4	4	5	5	4	2	3	4	4	3	3	2	3	3	2	2	3	3	4	4	6	6	7	8	8	9	9	9	9	8	9	9	10	10	11	11	
	8	7	8	8	8	8	8	9	9	6	7	5	6	7	6	4	4	5	6	6	8	9	11	12	12	13	13	14	14	13	14	14	15	16	16	18	
	N	ENE	N	NNE	N	NW	NNW	SE	NNE	NW	S	NE	NNE	NNE	NNE	NE	NE	ENE	ENE	ENE	E	E	E	E	ESE	ESE	ESE	ESE	ESE	ESE	ESE	ESE	ESE	ESE	ESE	ESE	
Shell Crude	4	4	5	4	4	2	3	4	4	3	3	2	3	3	2	3	3	3	4	4	6	7	8	9	9	9	9	9	9	9	9	10	10	10	11	12	
	8	8	8	8	8	8	8	10	8	6	7	5	7	7	6	4	4	5	6	6	8	10	11	12	12	13	13	14	14	13	14	14	15	16	17	18	
	N	N	N	NNE	ENE	NNW	NNW	SE	ENE	NNW	SSW	ESE	NNE	NNE	NNE	NE	NE	ENE	ENE	ENE	E	E	E	E	ESE	ESE	ESE	ESE	ESE	ESE	ESE	ESE	ESE	ESE	ESE	ESE	
Lynchburg Ferries	5	4	5	4	4	2	3	4	3	3	3	2	3	3	2	3	3	4	4	4	6	7	8	9	9	9	10	10	9	9	9	10	10	11	12		
	8	8	8	8	8	8	8	10	7	7	6	5	7	7	7	4	5	5	6	6	8	9	10	11	12	12	13	14	14	13	13	13	14	14	16	17	
	N	N	N	N	SSW	NNW	NW	NNE	SSW	NNW	NNW	SW	NNE	NNE	NNE	NE	NE	ENE	ENE	ENE	E	E	E	E	ESE	ESE	ESE	ESE	ESE	ESE	ESE	ESE	ESE	ESE	ESE	ESE	
Exxon 3	5	4	5	4	3	3	3	4	3	3	3	2	3	3	2	4	4	4	4	5	6	7	8	9	9	10	10	10	10	10	10	10	11	11	12		
	8	7	9	8	8	8	8	9	7	8	7	6	7	8	8	5	5	6	6	7	9	10	11	11	12	13	13	14	14	13	14	14	15	16	17		
	N	NNE	N	NNE	NW	NNW	NNW	NE	NNE	NW	N	SSW	NNE	NNE	NE	NE	NE	ENE	ENE	ENE	E	E	E	E	ESE	ESE	ESE	ESE	ESE	ESE	ESE	ESE	ESE	ESE	ESE	ESE	
Morgans Point	5	4	5	5	4	3	4	5	4	4	4	3	4	4	3	5	5	6	6	7	8	8	9	9	10	11	11	12	12	12	12	12	13	13			
	8	6	9	8	8	8	8	9	8	8	9	7	9	9	8	6	6	7	8	8	10	11	12	12	13	14	15	15	15	15	16	16	17	17			
	NNE	NE	ENE	NNE	W	N	W	NNE	NNW	NNW	N	E	NNE	NNE	NE	NE	NE	ENE	ENE	ENE	ENE	E	E	E	ESE	ESE	ESE	ESE	ESE	ESE	ESE	ESE	ESE	ESE	ESE		
75/76	5	4	6	7	6	5	6	8	7	6	7	6	7	7	6	7	8	8	9	10	10	10	10	10	11	12	13	14	15	16	16	16	16	17			
	9	6	9	9	9	8	10	8	7	8	10	9	9	9	9	8	9	9	10	11	12	12	13	13	14	15	16	17	18	18	18	18	18	19	19		
	NNE	N	SSE	NNE	ENE	SSW	SE	NNE	W	N	SSW	N	NNE	NNE	NE	NE	ENE	ENE	ENE	ENE	E	E	E	E	ESE	ESE	ESE	ESE	ESE	ESE	ESE	ESE	ESE	ESE	ESE		
63/64	6	5	7	7	7	7	7	9	7	7	9	8	8	8	8	9	10	10	11	11	11	11	11	11	12	13	14	15	16	17	17	17	17	17			
	9	7	9	10	9	9	8	10	7	8	10	9	9	9	9	8	9	10	10	11	12	12	13	13	14	15	16	17	18	18	19	19	19	19	20		
	NNE	NNE	SE	N	N	NNE	N	NNE	SW	N	NE	N	NNE	NE	NE	ENE	ENE	ENE	ENE	ENE	E	E	E	E	ESE	ESE	ESE	ESE	ESE	ESE	ESE	ESE	ESE	ESE	ESE		
51/52	7	6	7	7	8	7	8	9	7	7	9	8	8	9	8	8	9	9	10	10	11	11	12	12	13	14	14	15	17	17	17	17	17	17			
	9	8	10	10	9	9	9	9	7	8	10	9	10	10	9	9	10	11	11	12	13	14	15	15	16	16	17	18	19	19	19	19	19	20			
	N	E	ESE	ENE	N	NNE	NNE	NNE	W	N	N	NNE	NNE	NE	NE	ENE	ENE	ENE	ENE	ENE	E	E	E	E	ESE	ESE	ESE	ESE	ESE	ESE	ESE	ESE	ESE	ESE	ESE		
37/38	7	7	9	7	8	8	7	8	7	7	9	9	8	9	7	8	8	9	10	10	11	12	13	13	14	14	14	15	16	17	17	17	17	18			
	9	9	10	10	9	10	9	9	7	8	10	9	10	11	10	8	9	10	11	11	12	12	13	14	15	16	16	17	18	19	19	19	19	20			
	N	SW	SSW	SSW	N	NNE	NNE	NE	W	WNW	N	NNE	NNE	NE	NE	ENE	ENE	ENE	ENE	ENE	E	E	E	E	ESE	ESE	ESE	ESE	ESE	ESE	ESE	ESE	ESE	ESE	ESE		
25/26	7	7	8	7	7	8	6	8	6	7	8	8	8	8	7	7	8	8	9	10	10	12	13	13	14	14	14	14	15	15	16	16	16	16			
	9	9	9	10	9	10	9	9	8	8	9	9	10	11	10	8	9	10	10	11	12	13	14	15	15	15	16	17	18	18	18	18	18				
	N	SW	W	S	NE	NNE	N	NE	S	ESE	NNE	NNE	NNE	NE	NE	ENE	ENE	ENE	ENE	ENE	E	E	E	E	ESE	ESE	ESE	ESE	ESE	ESE	ESE	ESE	ESE	ESE			
11/12	7	6	7	7	6	7	6	7	6	7	7	7	7	8	7	8	8	9	9	10	11	12	13	13	14	14	14	15	15	16	16	16	16				
	9	9	9	10	9	10	9	9	8	9	9	9	10	10	9	9	10	11	12	12	14	15	15	15	15	16	17	18	18	18	18	18	18				
	N	ENE	SSE	E	E	NNE	N	ESE	SW	NNE	NNE	NNE	NNE	NE	NE	NE	ENE	ENE	ENE	ENE	E	E	E	E	ESE	ESE	ESE	ESE	ESE	ESE	ESE	ESE	ESE	ESE			
1 & 2 Bravo	9	8	8	9	9	11	9	8	8	9	10	9	9	10	9	10	11	12	13	13	14	15	15	16	16	16	17	18	18	19	19	19	19				
	10	9	9	11	10	11	10	9	9	9	10	9	10	10	10	10	11	12	13	14	14	15	16	17	17	17	17	18	19	20	21	21	21				
	NNE	N	N	N	N	NNE	NNE	E	SE	N	NNE	NNE	NE	NE	NE	NE	ENE	ENE	ENE	E	E	E	E	ESE	ESE	ESE	ESE	ESE	ESE	ESE	ESE	ESE	ESE	ESE			

Data Error



## Forecast Discussion

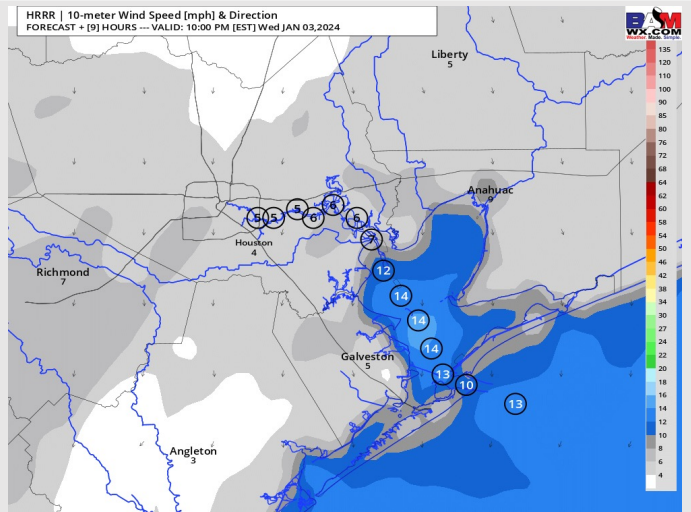
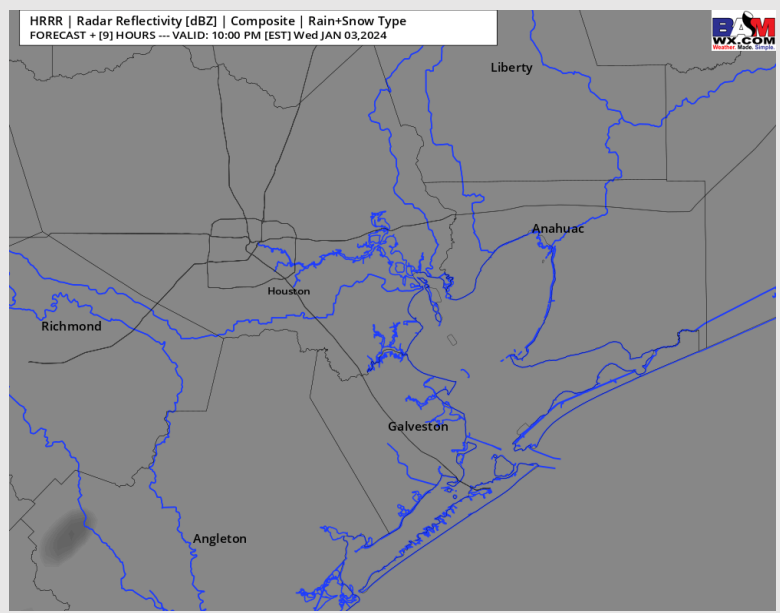
**Precip:** Rain has exited the area. Next best shot for rain comes FRI AM.

**Wind:** Winds remain out of the north through the remainder of the day/night. **N Morgan's Point:** Winds calm to 3 – 6 knots by 5 – 6 PM where they remain for the remainder of the night. **S of Morgan's Point:** By 5 – 6 PM, winds will generally be in the 8 – 14 knot range (windiest by the Boarding Station)

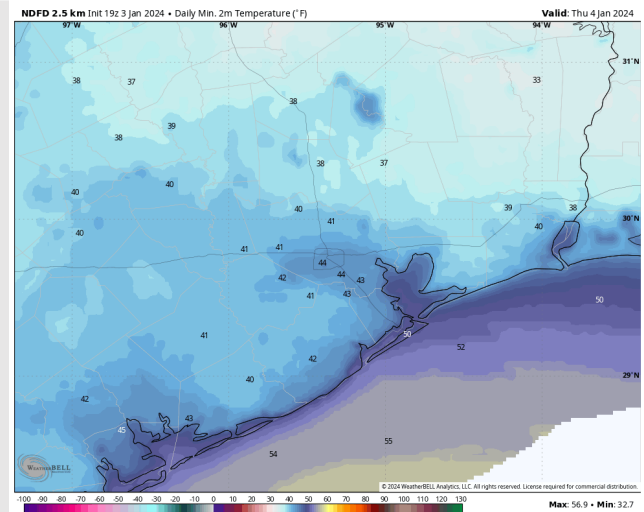
**High Temps:** **N of Morgan's Point:** Mid 40s F. **S of Morgan's Point:** Upper 40's F to near 50 F

**Visibility:** Not anticipating any fog concerns for the rest of the day.

## Precip Image: 9 PM CT



**Wind Speed:  
9 PM CT**



**Low Temps  
Thursday**

# Houston Pilots: Thu. 01/04/2024



## Forecast Discussion

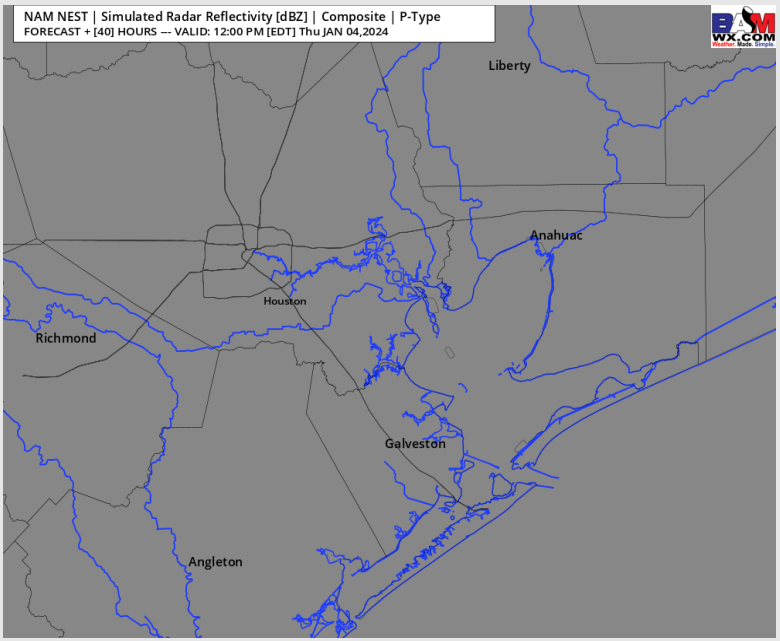
**Precip:** Dry Conditions are favored for most of THU. Would need to watch near midnight for less than 10% chances.

**Wind:** Northerly winds will begin to rotate out of the east through the AM becoming nearly easterly by 10 AM - 12 PM. Winds will continue to shift more out of the ESE heading into the afternoon/ evening. **N Morgan's Point:** 3 - 7 kits prior to 12 PM, increasing to 7 - 13 kts thereafter. **S of Morgan's Point:** 8 - 14 knot winds continue through about 9 - 10 AM where they being to pick up, especially towards the boarding station. By noon, winds at the boarding station are expected to by sustained around 13 - 17 mph and continue to pick up becoming sustained around 17 - 22 knots by 6 PM at the boarding station. Winds at the Boarding Station a touch higher at 13 - 17 kts by 1 PM. Gust of 23 - 26 knots cannot be ruled out after 5 PM near the Boarding Station.

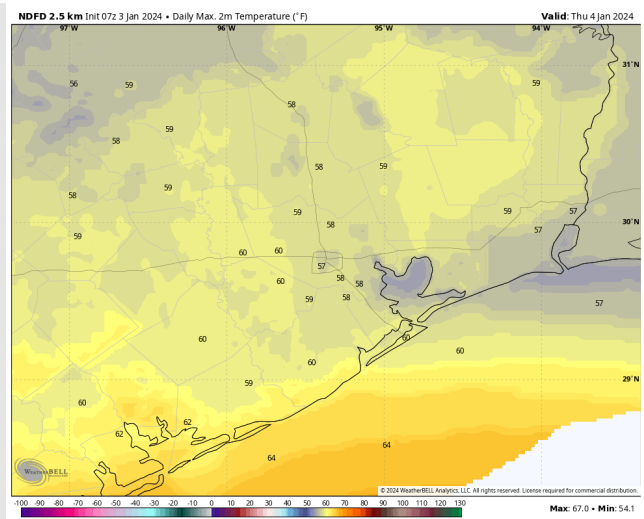
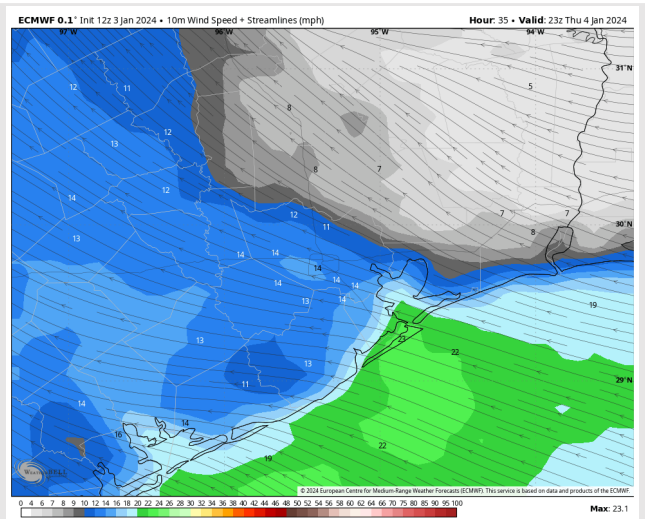
**High Temps:** **N of Morgan's Point:** Mid to upper 50s F. **S of Morgan's Point:** Mid 50s F. Near 60 F at the Boarding Station.

**Visibility:** At least a nonzero risk exists for patchy fog north of Morgan's point from 1 AM - 9 AM. This is a very low confidence mention. We overall favor a fog free WED night into THU AM.

## Precip Image: 11 AM CT



Wind Speed: 5 PM CT



High Temps Thursday

# Houston Pilots: Fri. 01/05/2024



## Forecast Discussion

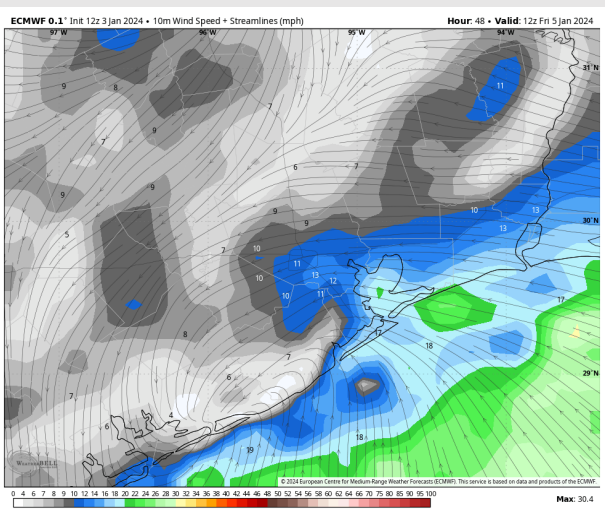
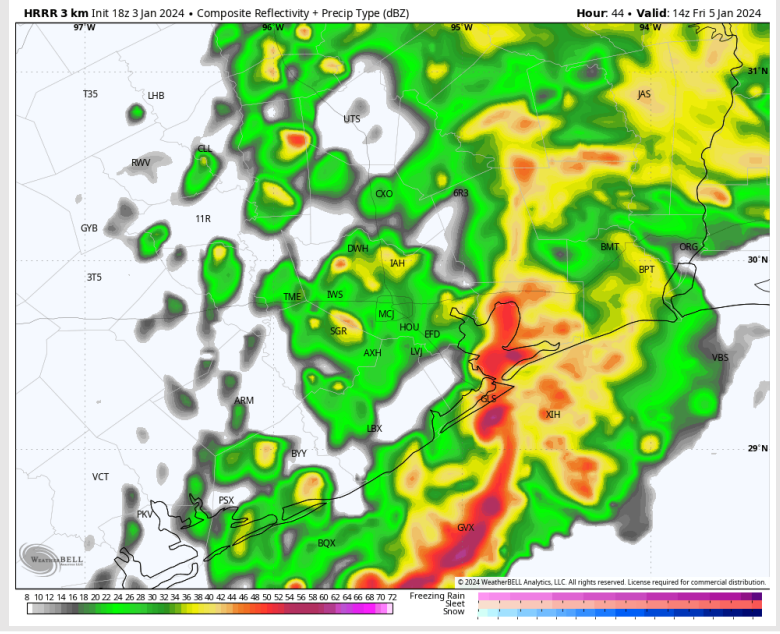
**Precip:** Favoring light drizzle to be possible between 12AM and 3AM for all stations. Rain showers/ storms will be possible from 4 AM – 10 AM. A bit lower confidence on exit time, but rain chances can extend towards 12 PM. Similar to the event from WED AM, this would need to be monitored for some stronger wind gusts.

**Wind:** E/SE winds are expected through roughly 10 AM before winds being to shift out of the NW (lower confidence on wind shift timing). **N of Morgan's Point:** 8 -13 kts for most of the day calming down to 3 – 7 knots after 4 – 6 PM. **S of Morgan's Point:** Winds of 15 – 22 kts will be possible before winds calm down after 4 – 6 pm to 8 – 13 knots.

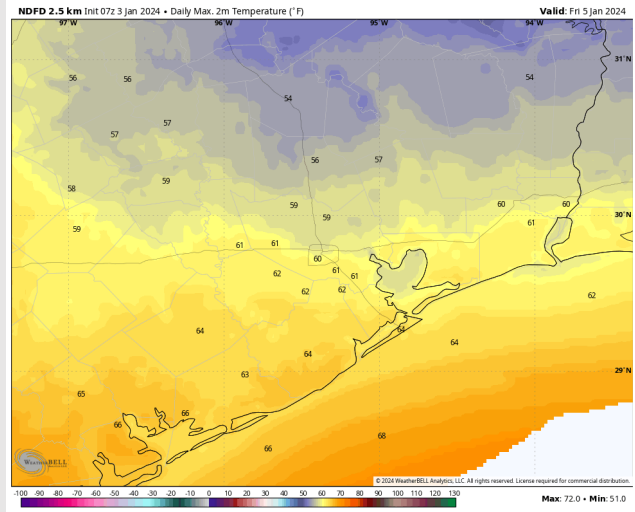
**Low Temps:** **N of Morgan's Point:** Low 60s F **S of Morgan's Point:** Mid 60s F

**Visibility:** FRI AM fog continues to remain low confidence. At this distance, I do not favor but a nonzero risk exists.

## Precip Image: 8 AM CT



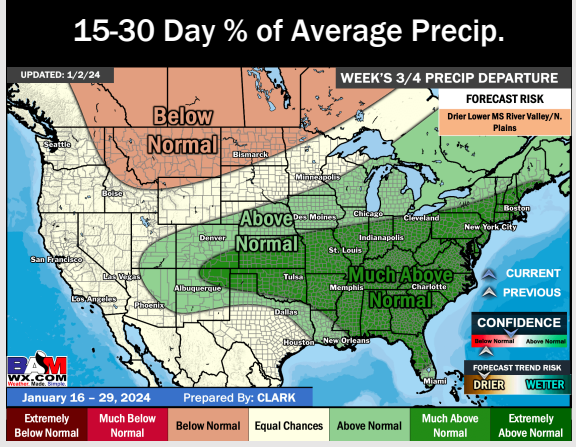
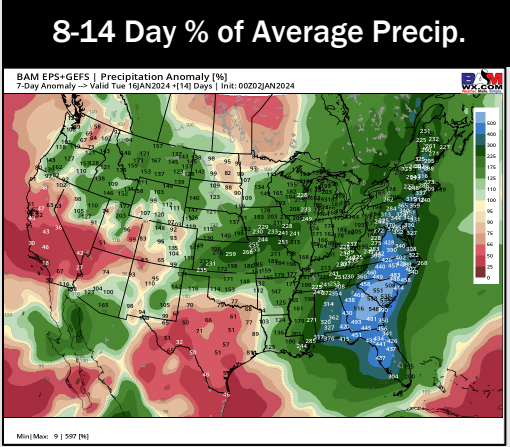
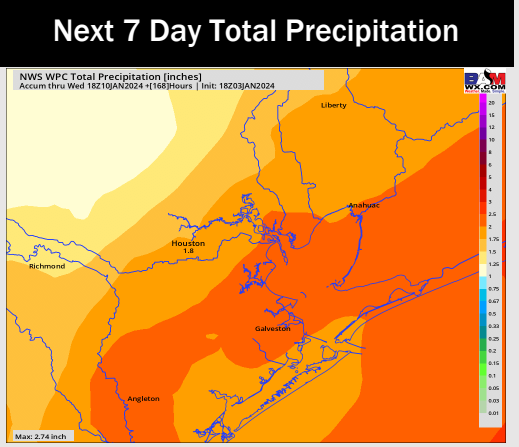
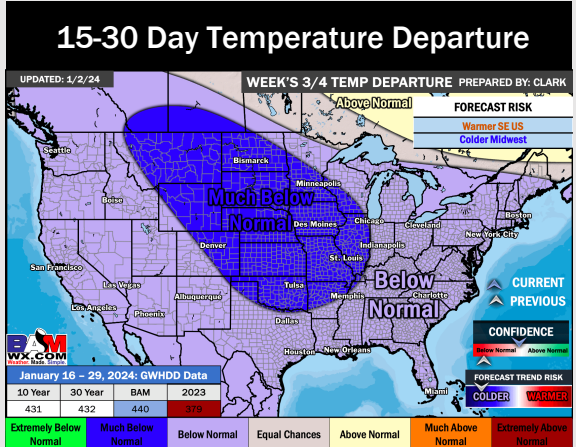
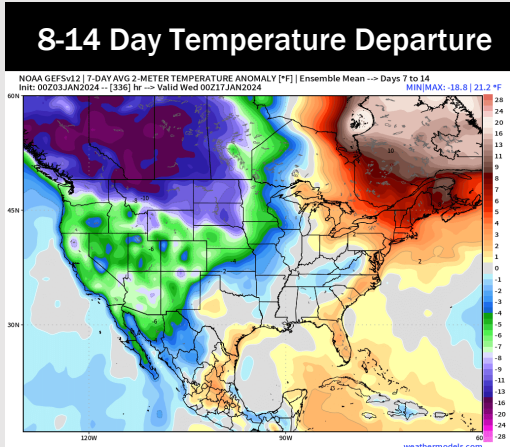
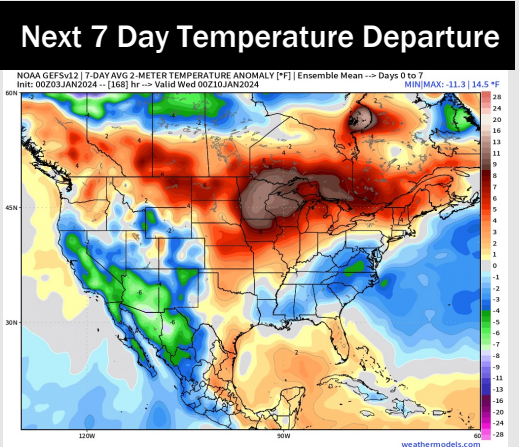
Wind Speed:  
6 AM CT



High Temps  
Friday



# Houston Pilots: 1/3/24



- Best opportunities for rain will be FRI AM and another on Monday. Some up and down temperatures will be possible this week.
- Periods of up and down temperatures likely continues into the week 2 timeframe with a colder risk. Versus the map above, there is a risk for things to trend wetter.
- Below normal temperatures and seasonal chances for precipitation are favored in the weeks 3/4 timeframe.