

Houston Pilots Forecast Package



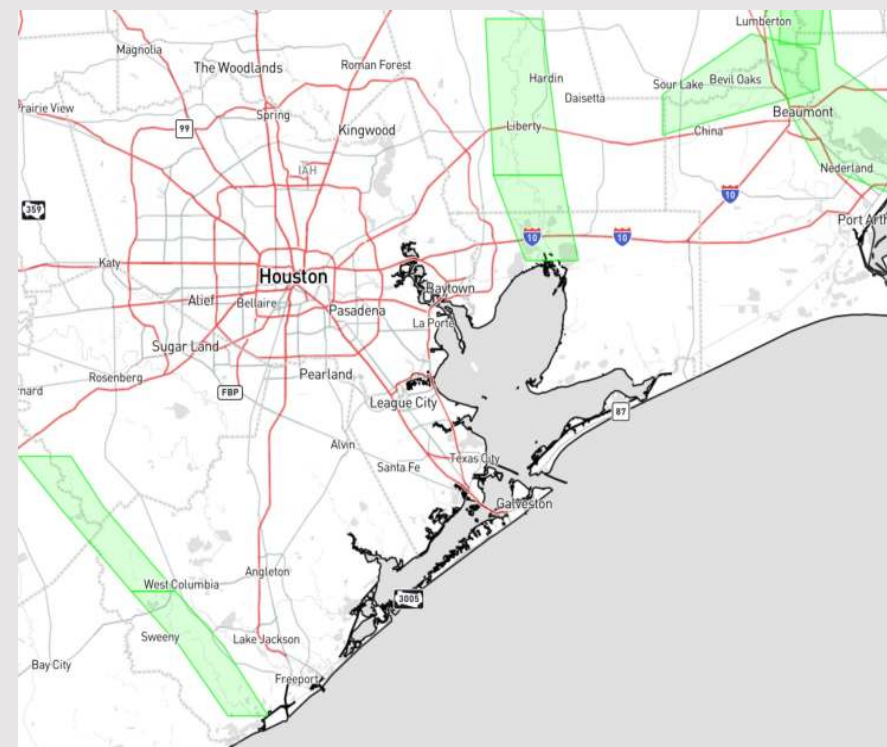
Updated: 2:00 PM CT

Tuesday, January 30, 2024

Forecaster: Alyssa Elliott

Weather Headlines

- A dry stretch is in store through tomorrow. Drizzle chances will enter on Thursday with better chances for accumulating precip through the weekend.
- Winds to remain rather calm over the next few days.
- Not anticipating a fog risk tonight and tomorrow. Need to watch Thursday AM for a low end, patchy risk.



Radar/NWS Alerts: 2:00 PM CT



As always, please do not hesitate to reach out to us with any forecast questions via the chat option on the Weather Porthole or our on-call number, **(317)-560-8122** press 1 for forecast questions.

Houston Pilots Extended Range Visibility Report



Friday 2/2/24

No visibility concerns favored for Friday



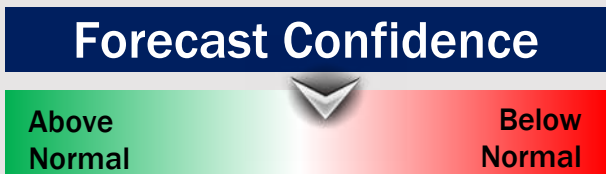
Saturday 2/3/24

Periods of moderate to heavy rainfall can reduce visibilities throughout SAT (lower confidence on exact start timing). A few instances of patchy fog mixing in cannot be ruled out.



Sunday 2/4/24

Lower confidence due to exit timing of rain SAT PM, but patchy fog will be possible behind heavy rain SUN AM



Chance for Fog

Friday AM	Unlikely
Friday PM	Unlikely
Saturday AM	Possible
Saturday PM	Possible
Sunday AM	Possible
Sunday PM	Unlikely

Houston Pilots Visibility Chart (miles)



Forecast Confidence



Time	Tue 1pm	Tue 2pm	Tue 3pm	Tue 4pm	Tue 5pm	Tue 6pm	Tue 7pm	Tue 8pm	Tue 9pm	Tue 10pm	Tue 11pm	Wed 12am	Wed 1am	Wed 2am	Wed 3am	Wed 4am	Wed 5am	Wed 6am	Wed 7am	Wed 8am	Wed 9am	Wed 10am	Wed 11am	Wed 12pm	Wed 1pm	Wed 2pm	Wed 3pm	Wed 4pm	Wed 5pm	Wed 6pm	Wed 7pm	Wed 8pm	Wed 9pm	Wed 10pm	Wed 11pm	Thu 12am
610 Bridge	10	10	10	10	10	10	10	10	10	10	10	10	10	10	10	10	10	10	6	6	10	10	10	10	10	10	10	10	10	10	10	10	10	10	10	
Kinder 1	10	10	10	10	10	10	10	10	10	10	10	10	10	10	10	10	10	10	6	6	10	10	10	10	10	10	10	10	10	10	10	10	10	10	10	
Greens Bayou	10	10	10	10	10	10	10	10	10	10	10	10	10	10	10	10	10	10	7	7	10	10	10	10	10	10	10	10	10	10	10	10	10	10	10	
Shell Crude	10	10	10	10	10	10	10	10	10	10	10	10	10	10	10	10	10	10	9	9	10	10	10	10	10	10	10	10	10	10	10	10	10	10	10	
Lynchburg Ferries	10	10	10	10	10	10	10	10	10	10	10	10	10	10	10	10	10	10	9	9	10	10	10	10	10	10	10	10	10	10	10	10	10	10	10	
Exxon 3	10	10	10	10	10	10	10	10	10	10	10	10	10	10	10	10	10	10	9	9	10	10	10	10	10	10	10	10	10	10	10	10	10	10	10	
Morgans Point	10	10	10	10	10	10	10	10	10	10	10	10	10	10	10	10	10	10	9	9	10	10	10	10	10	10	10	10	10	10	10	10	10	10	10	
75/76	10	10	10	10	10	10	10	10	10	10	10	10	10	10	10	10	10	10	9	9	10	10	10	10	10	10	10	10	10	10	10	10	10	10	10	
63/64	10	10	10	10	10	10	10	10	10	10	10	10	10	10	10	10	10	9	9	9	9	10	10	10	10	10	10	10	10	10	10	10	10	10	10	
51/52	10	10	10	10	10	10	10	10	10	10	10	10	10	10	10	9	8	9	9	9	9	10	10	10	10	10	10	10	10	10	10	10	10	10	10	
37/38	10	10	10	10	10	10	10	10	10	10	10	10	10	10	10	9	10	10	9	9	9	10	10	10	10	10	10	10	10	10	10	10	10	10	10	
25/26	10	10	10	10	10	10	10	10	10	10	10	10	10	10	10	9	10	10	10	9	9	10	10	10	10	10	10	10	10	10	10	10	10	10	10	
11/12	10	10	10	10	10	10	10	10	10	10	10	10	10	10	10	9	10	10	10	10	9	10	10	10	10	10	10	10	10	10	10	10	10	9	10	
1 & 2 Bravo	10	10	10	10	10	10	10	10	10	10	10	10	10	9	7	9	10	10	10	10	10	10	9	10	10	10	10	10	10	9	9	9	9	9	9	9

NOTE: This is automated data that may/may not agree with the official BAM thinking that's found on the daily slides or special visibility report slides. This data should be used as a guide only

Houston Pilots Wind Chart



Forecast Confidence



Example

Sustained wind 13 Knots
Gusts 18 Knots
Wind from the N

WS: 13
G:18
N

Time Knots	Tue 1pm	Tue 2pm	Tue 3pm	Tue 4pm	Tue 5pm	Tue 6pm	Tue 7pm	Tue 8pm	Tue 9pm	Tue 10pm	Tue 11pm	Wed 12am	Wed 1am	Wed 2am	Wed 3am	Wed 4am	Wed 5am	Wed 6am	Wed 7am	Wed 8am	Wed 9am	Wed 10am	Wed 11am	Wed 12pm	Wed 1pm	Wed 2pm	Wed 3pm	Wed 4pm	Wed 5pm	Wed 6pm	Wed 7pm	Wed 8pm	Wed 9pm	Wed 10pm	Wed 11pm	Thu 12am
610 Bridge	5 8 W	5 8 W	5 8 W	5 7 W	5 7 W	4 6 WSW	3 5 WSW	3 5 SW	3 5 SW	3 5 WSW	3 5 WSW	4 6 WSW	4 6 WSW	4 6 W	4 6 W	4 5 WNW	3 5 WNW	3 5 WNW	2 4 NW	2 3 NNW	3 5 NNW	3 4 WNW	3 4 NNE	2 4 ENE	3 5 E	3 4 ESE	3 4 ESE	4 5 ESE	4 5 ESE	4 6 SE	4 5 SE	4 5 SSE	3 5 SSE	3 5 SSE	2 4 SSE	3 5 S
Kinder 1	6 8 W	5 8 W	5 8 W	5 7 W	5 7 W	4 6 WSW	3 5 WSW	3 5 SW	3 5 SW	3 5 WSW	3 5 WSW	4 6 WSW	4 6 WSW	4 6 W	4 6 W	4 5 WNW	3 5 WNW	3 5 WNW	2 4 NW	2 3 NNW	3 5 NNW	3 4 WNW	3 4 NE	3 4 ENE	3 4 E	3 4 ESE	3 4 ESE	4 5 ESE	4 5 SE	4 5 SE	4 5 SSE	3 5 SSE	3 5 SSE	2 4 SSE	3 5 S	
Greens Bayou	6 8 W	5 8 W	5 8 W	5 7 W	5 7 W	4 6 WSW	3 5 WSW	3 5 SW	3 5 SW	3 5 WSW	3 5 WSW	4 6 WSW	4 6 WSW	4 6 W	4 6 W	4 5 WNW	3 5 WNW	3 5 WNW	2 4 NW	2 3 NNW	3 5 NNW	3 4 WNW	3 4 NE	3 4 ENE	3 4 E	3 4 ESE	3 4 ESE	4 5 ESE	4 5 SE	4 5 SE	4 5 SSE	3 5 SSE	3 5 SSE	2 4 SSE	3 5 S	
Shell Crude	6 7 W	5 8 W	5 8 W	5 7 W	5 7 W	4 6 WSW	3 5 WSW	3 5 SW	3 5 SW	3 5 WSW	3 5 WSW	4 6 WSW	4 6 WSW	4 6 W	4 6 W	4 5 WNW	3 5 WNW	3 5 WNW	2 4 NW	2 3 NNW	3 5 NNW	3 4 WNW	3 4 NE	3 4 ENE	3 4 E	3 4 ESE	3 4 ESE	4 5 ESE	4 5 SE	4 5 SE	4 5 SSE	3 5 SSE	3 5 SSE	2 4 SSE	3 5 S	
Lynchburg Ferries	6 8 W	5 8 W	5 8 W	5 7 W	5 7 W	4 6 WSW	3 5 WSW	3 5 SW	3 5 SW	3 5 WSW	3 5 WSW	4 6 WSW	4 6 WSW	4 6 W	4 6 W	4 5 WNW	3 5 WNW	3 5 WNW	2 4 NW	2 3 NNW	3 5 NNW	3 4 WNW	3 4 NE	3 4 ENE	3 4 E	3 4 ESE	3 4 ESE	4 5 ESE	4 5 SE	4 5 SE	4 5 SSE	3 5 SSE	3 5 SSE	2 4 SSE	3 5 S	
Exxon 3	5 8 W	5 8 W	6 8 W	5 8 W	5 8 W	4 6 WSW	4 6 WSW	4 6 SW	4 6 SW	4 6 WSW	4 6 WSW	5 7 WSW	5 7 WSW	5 7 W	5 7 W	4 6 WNW	4 6 WNW	4 6 WNW	3 5 NW	3 5 NNW	3 5 NNW	3 4 WNW	3 4 NE	3 4 ENE	3 4 E	3 4 ESE	3 4 ESE	4 5 ESE	4 5 SE	4 5 SE	4 5 SSE	3 5 SSE	3 5 SSE	2 4 SSE	3 5 S	
Morgans Point	5 WSW	5 WSW	6 SW	6 SW	6 SW	5 SW	5 SW	5 SW	5 SW	5 WSW	5 WSW	5 WSW	5 WSW	5 W	5 W	4 WNW	4 WNW	4 WNW	3 NW	3 NNW	3 NNW	3 WNW	3 NE	3 ENE	3 E	3 ESE	3 ESE	4 ESE	4 SE	4 SE	4 SSE	3 SSE	3 SSE	2 SSE	3 SSE	
75/76	5 WSW	6 SW	6 SW	7 SW	7 SW	6 SW	6 SW	6 SW	6 SW	6 WSW	6 WSW	6 WSW	6 WSW	6 W	6 W	5 WNW	5 WNW	5 WNW	4 NW	4 NNW	4 NNW	4 WNW	4 NNE	4 ENE	4 E	4 ESE	4 ESE	5 ESE	5 SE	5 SE	5 SSE	4 SSE	4 SSE	3 SSE	4 SSE	
63/64	5 WSW	5 SW	6 SSW	7 SW	7 SW	6 SW	6 SW	6 SW	6 SW	6 WSW	6 WSW	6 WSW	6 WSW	6 W	6 W	5 WNW	5 WNW	5 WNW	4 NW	4 NNW	4 NNW	4 WNW	4 NNE	4 ENE	4 E	4 ESE	4 ESE	5 ESE	5 SE	5 SE	5 SSE	4 SSE	4 SSE	3 SSE	4 SSE	
51/52	5 WSW	5 SW	6 SSW	7 SW	7 SW	6 SW	6 SW	6 SW	6 SW	6 WSW	6 WSW	6 WSW	6 WSW	6 W	6 W	5 WNW	5 WNW	5 WNW	4 NW	4 NNW	4 NNW	4 WNW	4 NNE	4 ENE	4 E	4 ESE	4 ESE	5 ESE	5 SE	5 SE	5 SSE	4 SSE	4 SSE	3 SSE	4 SSE	
37/38	5 WSW	5 SW	6 SSW	7 SW	7 SW	6 SW	6 SW	6 SW	6 SW	6 WSW	6 WSW	6 WSW	6 WSW	6 W	6 W	5 WNW	5 WNW	5 WNW	4 NW	4 NNW	4 NNW	4 WNW	4 NNE	4 ENE	4 E	4 ESE	4 ESE	5 ESE	5 SE	5 SE	5 SSE	4 SSE	4 SSE	3 SSE	4 SSE	
25/26	5 WSW	6 SW	6 SSW	7 SW	7 SW	6 SW	6 SW	6 SW	6 SW	6 WSW	6 WSW	6 WSW	6 WSW	6 W	6 W	5 WNW	5 WNW	5 WNW	4 NW	4 NNW	4 NNW	4 WNW	4 NNE	4 ENE	4 E	4 ESE	4 ESE	5 ESE	5 SE	5 SE	5 SSE	4 SSE	4 SSE	3 SSE	4 SSE	
11/12	5 WSW	6 SW	6 SSW	7 SW	7 SW	6 SW	6 SW	6 SW	6 SW	6 WSW	6 WSW	6 WSW	6 WSW	6 W	6 W	5 WNW	5 WNW	5 WNW	4 NW	4 NNW	4 NNW	4 WNW	4 NNE	4 ENE	4 E	4 ESE	4 ESE	5 ESE	5 SE	5 SE	5 SSE	4 SSE	4 SSE	3 SSE	4 SSE	
1 & 2 Bravo	5 WSW	6 SW	7 SW	9 SW	9 SW	9 SW	9 SW	9 SW	9 SW	9 WSW	9 WSW	9 WSW	9 WSW	9 W	9 W	8 WNW	8 WNW	8 WNW	8 NW	8 NNW	8 NNW	8 WNW	8 NNE	8 ENE	8 E	8 ESE	8 ESE	9 ESE	9 SE	9 SE	9 SSE	8 SSE	8 SSE	7 SSE	8 SSE	

NOTE: This is automated data that may/may not agree with the official BAM thinking that's found on the daily slides or special visibility report slides. This data should be used as a guide only

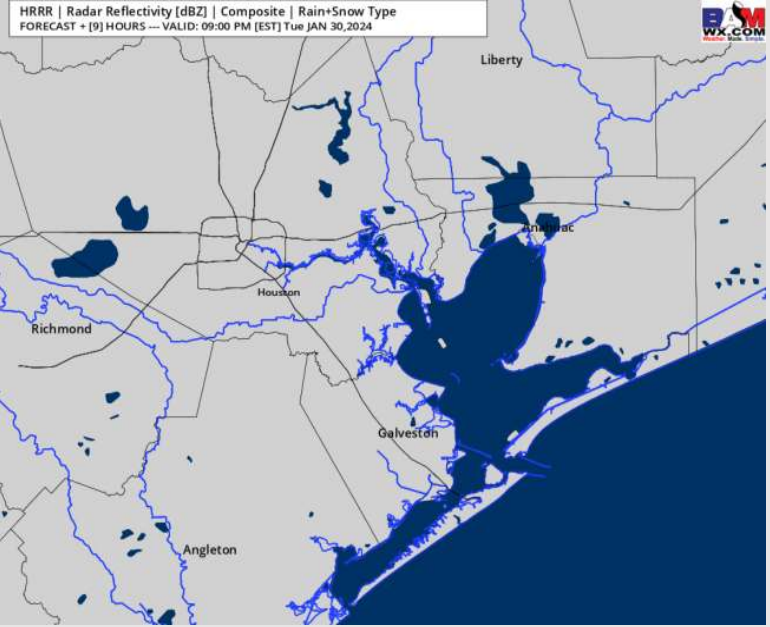
Houston Pilots: Tue. 1/30/2024



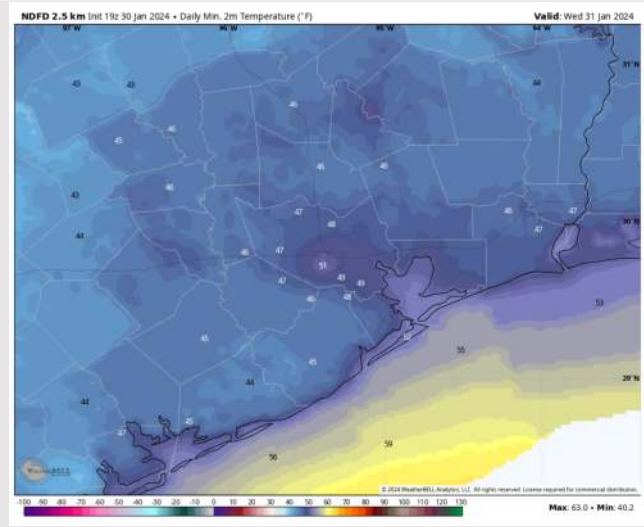
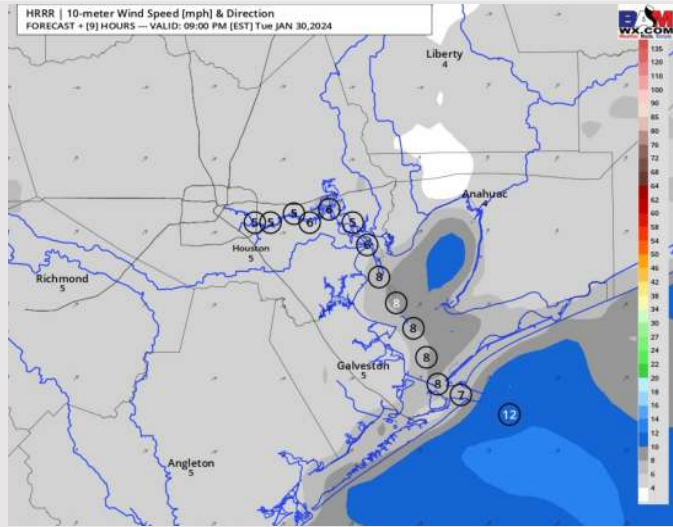
Forecast Discussion

- Precip:** Dry conditions favored throughout the day.
- Wind:** Winds out of the W will shift out of the WSW by 6 PM. **N Morgan's Point:** 3-8 kts throughout the day. **S of Morgan's Point:** 4-9 kts through 4PM when winds will slightly pick up to 7 - 12 kts for the rest of the day.
- Low Temps:** **N of Morgan's Point:** Upper 40s F to Low 50s F
S of Morgan's Point: Low to Mid 50s F .
- Visibility:** No visibility concerns for the rest of today.

Precip Image: 8 PM CT



Wind Speed:
8 PM CT



Low Temps
Wed AM

Forecast Discussion

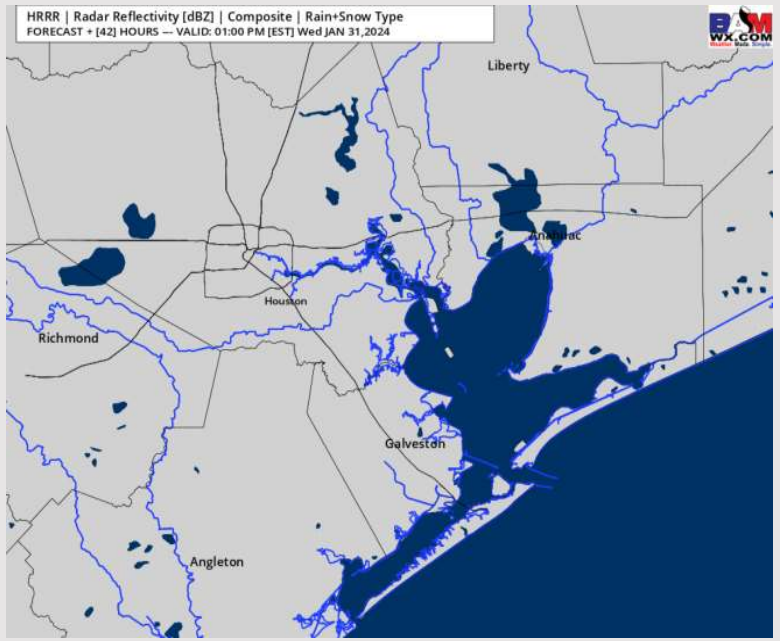
Precip: Favoring dry conditions throughout the day on Wednesday.

Wind: Winds to gradually shift to being out of the NW by 5AM, NE by 10 AM, then settle out of the SE by 6 PM. **N Morgan's Point:** 3-8 kts the entire day **S of Morgan's Point:** Winds will be at 7-12 kts through ~9 AM before decreasing to 3-8 kts the rest of the day. (Winds at the Boarding Station can linger ~10-12 kts through 4 PM)

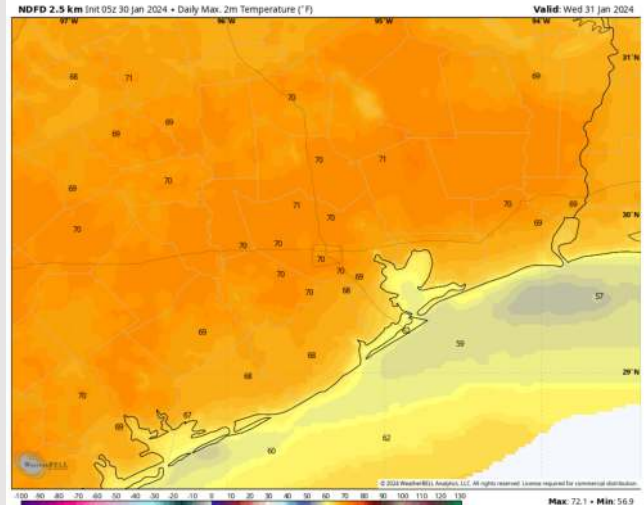
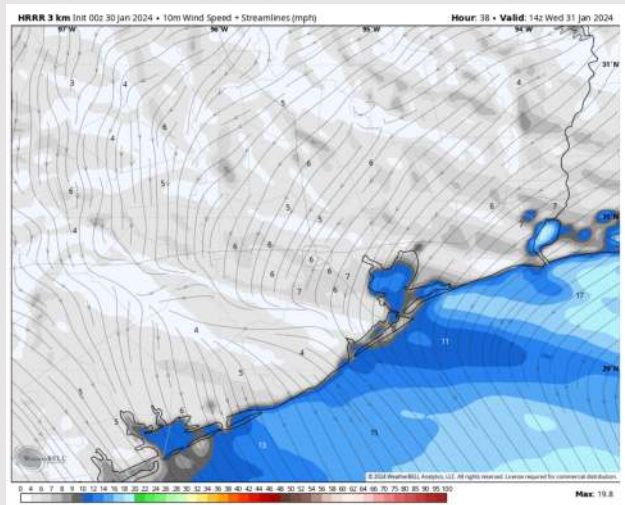
High Temps: **N of Morgan's Point:** Upper 60s/Near 70 F. **S of Morgan's Point:** Upper 50s/Near 60 F.

Visibility: No visibility concerns favored for Wednesday.

Precip Image: 12 PM CT



Wind Speed:
8 AM CT



High Temps
Wednesday

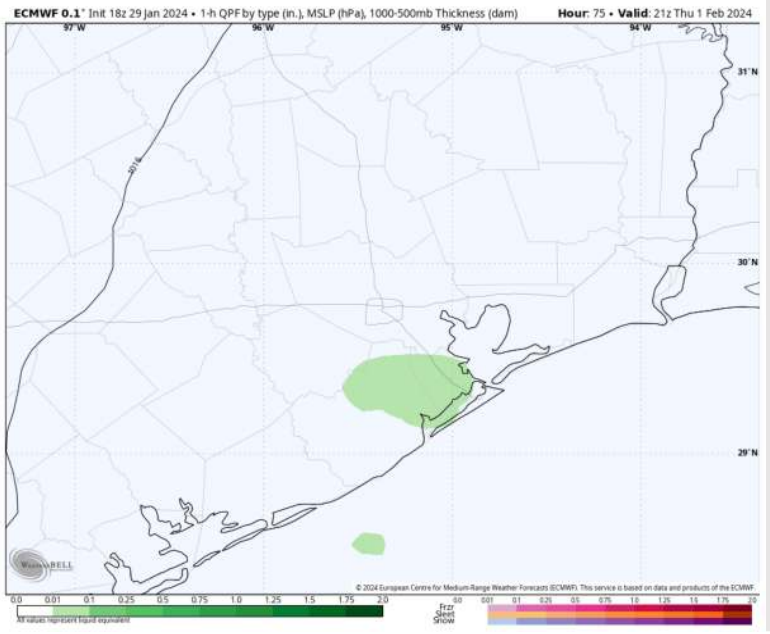
Houston Pilots: Thu. 2/1/2024



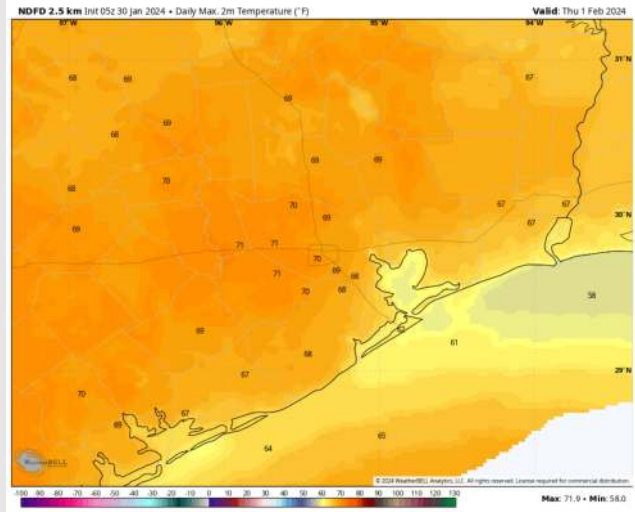
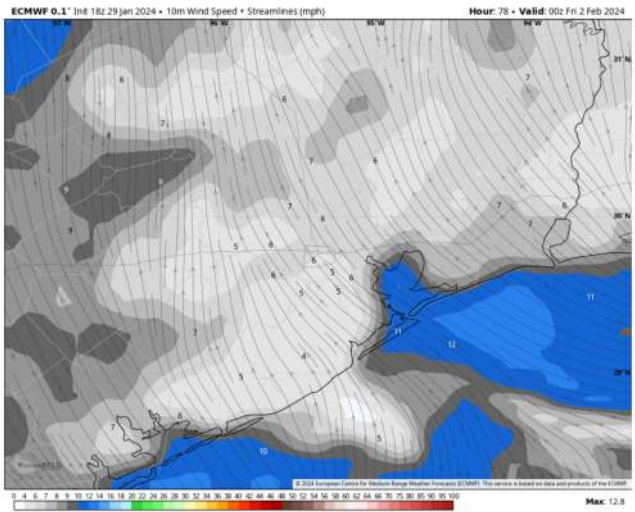
Forecast Discussion

- Precip:** Dry conditions favored Thursday AM with light drizzle/showers entering for the PM hours.
- Wind:** Winds out of the SE the entire day THU. **N of Morgan's Point:** 3-8 kts the entire day. **S of Morgan's Point:** 3-8 kts through 10 AM before a slight increase to 7-12kts the rest of the day.
- High Temps:** **N of Morgan's Point:** High 60s to near 70 F. **S of Morgan's Point:** Low 60s F
- Visibility:** A low end, patchy fog risk will be possible during the mid morning hours for stations N of Morgan's Point.

Precip Image: 3 PM CT



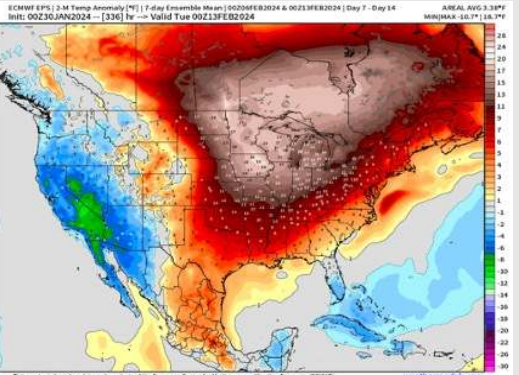
Wind Speed:
6 PM CT



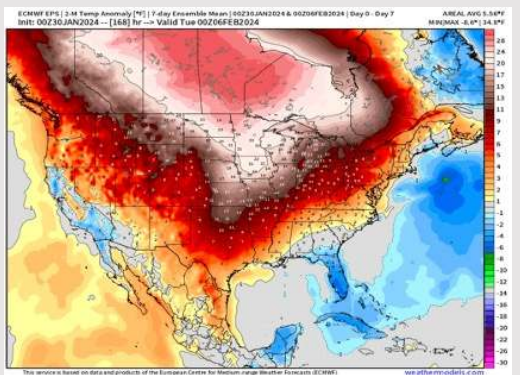
High Temps
Thursday

Houston Pilots: 1/30/24

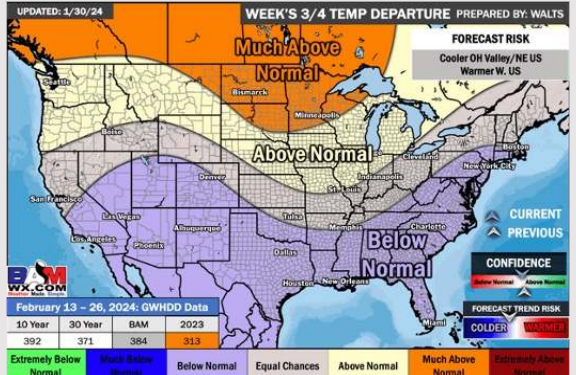
Next 7 Day Temperature Departure



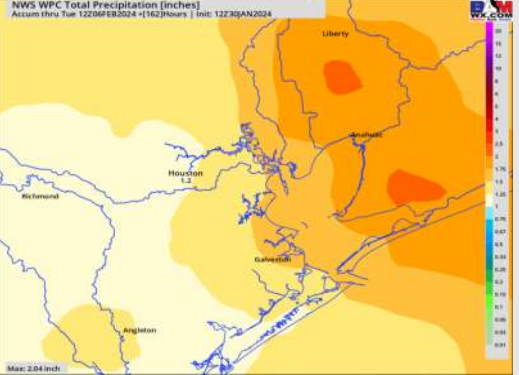
8-14 Day Temperature Departure



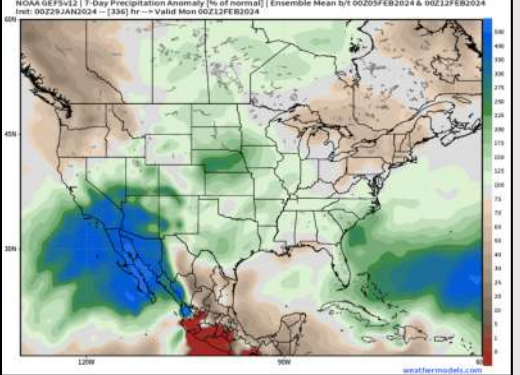
15-30 Day Temperature Departure



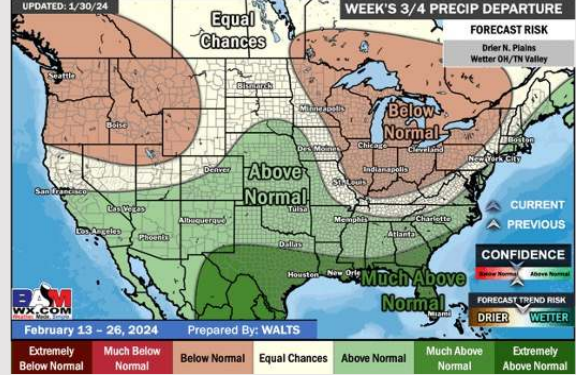
Next 7 Day Total Precipitation



8-14 Day % of Average Precip.



15-30 Day % of Average Precip.



- Drier conditions will continue through roughly Thursday AM before drizzle can press into the area during the afternoon. The best chances for accumulation looks to enter on Saturday. Above normal temperatures favored for the week ahead.
- Above normal precipitation chances are at play during the week 2 timeframe. Temps expected to be above normal as well.
- Below normal temperatures and much above normal chances for precipitation are favored in the weeks 3/4 timeframe.