

Houston Pilots Forecast Package



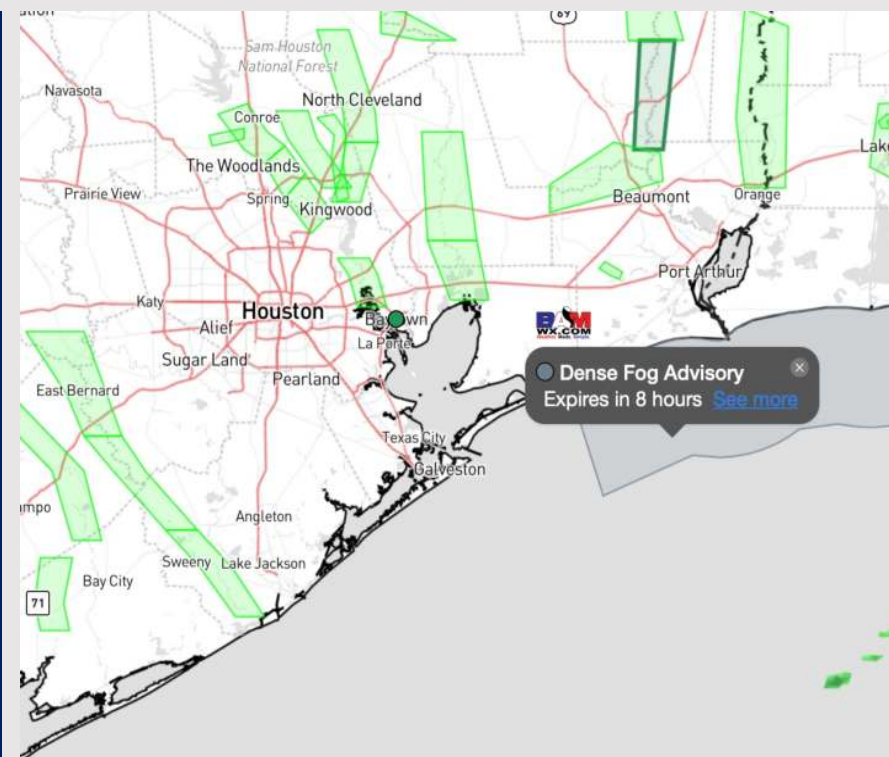
Updated: 9:00 AM CT

Friday, January 26, 2024

Forecaster: Alyssa Elliott

Weather Headlines

- Anticipating shower risks for Friday and Saturday.
- Favoring winds to remain fairly calm over the next 24 hours before winds pick up for the weekend and some gusts of up to 20 kts will be in play.
- **Sea fog threats continuing this morning into the PM with lower confidence remaining for exact start time possible evening coverage. Please see visibility slides for more info.**



Radar/NWS Alerts: 12:39 AM CT

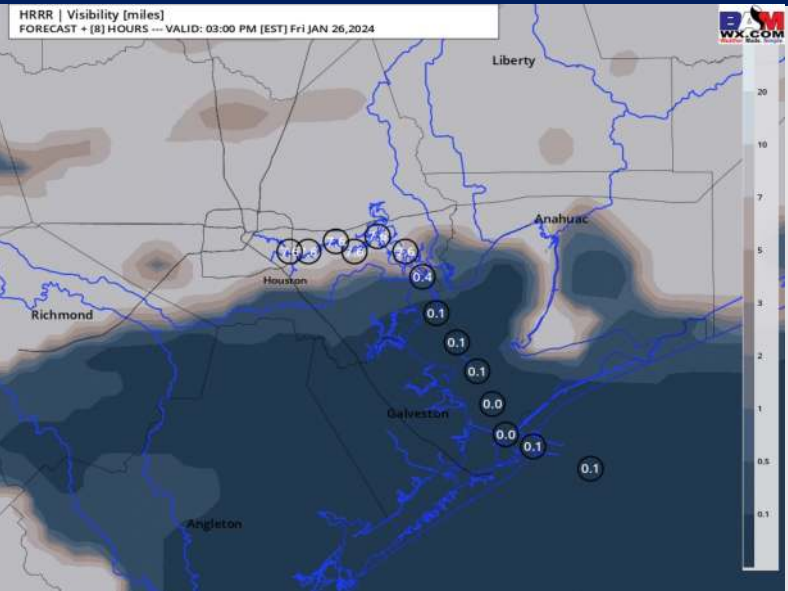


As always, please do not hesitate to reach out to us with any forecast questions via the chat option on the Weather Porthole or our on-call number, **(317)-560-8122** press 1 for forecast questions.

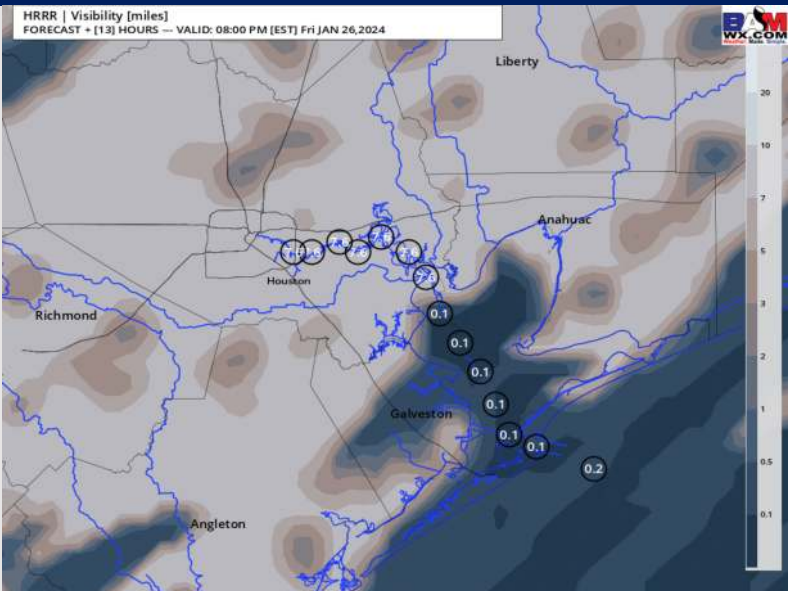
Houston Pilots Visibility Report



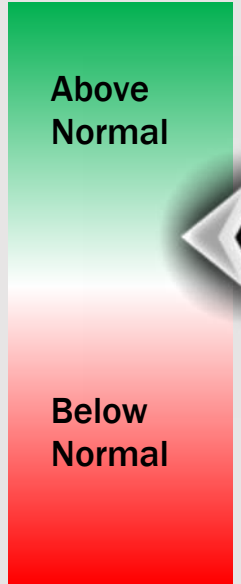
2 PM CT FRI Visibility



7 PM CT FRI Visibility



Confidence



TIMEFRAME DISCUSSED	THREAT
CURRENT - 3 AM SAT	Med - High

- There is higher confidence that dense sea fog will continue to be a risk throughout much of the day today. Confidence remains slightly lower for timing for when coverage can become patchier in nature later this evening and exact timing for when this fog pushes out completely.
- **N of Morgan's Point:** Anticipating widespread, dense fog (vis less than 1 mile) continues to linger for stations N. of Morgan's Point until 1 - 2 PM-CT today before scattered showers begin to push through the area, improving visibility to 2 - 4 miles (showers slightly reducing vis). An isolated pocket of fog mixing in through the PM, reducing visibility to less than 1 mile, cannot be ruled out.
- **S of Morgan's Point:** Fog is expected to remain widespread and dense (vis less than 1 mile) through 4-5 PM-CT today. After ~4 PM, scattered showers will be working through the area helping to make fog slightly more patchy in nature for stations S of Morgan's Point. Visibility is expected to be reduced to 1 - 3 miles with frequent instances of visibility dropping to 1 mile or less through 9 PM. From 9 PM - 11 PM, a break in rain may allow for fog / dense fog to temporarily become widespread again throughout the Bay and at the Boarding Station. Between 11 PM-CT Friday and 3 AM-CT fog will begin to be pushed out by the front traveling SE. Anticipating fog clears the Boarding Station by 3 AM-CT, ending the reduced visibility threat. It is possible the threat could end slightly sooner early Sat AM.

Houston Pilots Extended Range Visibility Report



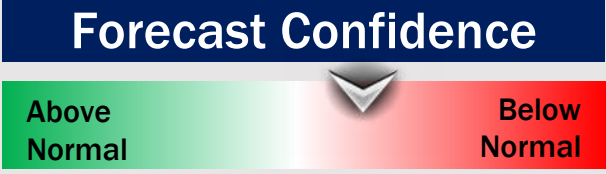
Monday 1/29/24

No visibility concerns favored for Monday.



Tuesday 1/30/24

No visibility concerns favored for Tuesday.



Wednesday 1/31/24

No visibility concerns favored for Wednesday.



Chance for Fog

Monday AM	Unlikely
Monday PM	Unlikely
Tuesday AM	Unlikely
Tuesday PM	Unlikely
Wednesday AM	Unlikely
Wednesday PM	Unlikely

Houston Pilots Visibility Chart (miles)



Forecast Confidence



Time	Fri 12am	Fri 1am	Fri 2am	Fri 3am	Fri 4am	Fri 5am	Fri 6am	Fri 7am	Fri 8am	Fri 9am	Fri 10am	Fri 11am	Fri 12pm	Fri 1pm	Fri 2pm	Fri 3pm	Fri 4pm	Fri 5pm	Fri 6pm	Fri 7pm	Fri 8pm	Fri 9pm	Fri 10pm	Fri 11pm	Sat 12am	Sat 1am	Sat 2am	Sat 3am	Sat 4am	Sat 5am	Sat 6am	Sat 7am	Sat 8am	Sat 9am	Sat 10am	Sat 11am			
610 Bridge	10	7	6	5	4	0.84	1	0.89	1	2	3	9	10	10	10	8	7	6	6	5	4	3	3	2	2	0.48	0.24	0.24	0.24	0.24	0.48	1	4	8	10	10			
Kinder 1	10	7	6	5	4	0.98	1	1	1	2	3	9	10	10	10	8	7	7	6	5	4	3	3	3	4	2	2	2	2	2	2	2	4	8	10	10			
Greens Bayou	10	7	6	5	4	1	1	1	1	2	3	9	10	10	10	9	7	7	7	5	4	3	3	4	5	4	4	4	4	4	4	4	4	5	8	10	10		
Shell Crude	10	7	6	5	4	1	1	1	1	2	3	9	10	10	10	9	7	7	7	5	4	3	3	4	8	8	8	8	8	8	8	8	8	8	8	8	10	10	
Lynchburg Ferries	10	7	6	5	4	1	1	1	1	2	3	9	10	10	10	9	8	7	7	5	4	4	3	4	8	8	8	8	8	8	8	8	8	8	8	8	10	10	
Exxon 3	10	7	6	5	4	1	1	1	1	2	3	9	10	10	10	9	7	7	7	5	4	3	3	4	8	8	8	8	8	8	8	8	8	8	8	8	10	10	
Morgans Point	10	7	6	5	4	0.93	1	1	0.81	1	3	9	10	10	10	9	7	7	7	5	4	3	3	4	8	8	8	8	8	8	8	8	8	8	8	8	8	10	10
75/76	10	7	6	5	4	0.77	0.91	0.53	0.29	1	3	9	10	10	9	7	6	7	7	5	4	3	2	3	8	8	8	8	8	8	8	8	8	8	8	8	8	10	10
63/64	10	7	5	3	0.57	0.57	0.53	0.29	0.29	1	2	6	10	10	9	7	6	6	6	5	4	3	2	2	8	8	8	8	8	8	8	8	8	8	8	8	8	10	10
51/52	9	6	2	1	1	0.9	0.29	0.29	0.29	1	3	7	9	7	7	6	5	5	4	4	3	3	2	2	6	8	8	7	8	7	8	8	8	8	8	8	10	10	
37/38	9	6	2	2	1	1	0.29	0.29	0.29	0.29	3	5	8	5	4	4	4	4	3	2	2	1	1	1	4	7	7	6	6	6	6	8	8	8	8	8	8	10	10
25/26	9	4	2	2	2	1	0.48	0.29	0.29	0.29	2	4	7	2	1	1	1	1	1	1	1	1	1	0.72	1	3	8	6	6	6	5	7	8	8	8	8	10	10	
11/12	9	4	2	2	2	1	0.53	0.29	0.29	0.29	2	5	9	4	2	1	1	1	1	1	1	1	1	0.9	0.84	1	6	6	5	6	4	5	8	8	8	8	8	10	10
1 & 2 Bravo	9	3	2	2	1	0.29	0.53	0.29	0.29	0.29	2	4	7	3	3	2	0.89	0.89	0.99	0.89	0.89	0.89	0.58	0.58	0.44	4	6	2	4	6	4	8	8	8	8	8	9	9	

NOTE: This is automated data that may/may not agree with the official BAM thinking that's found on the daily slides or special visibility report slides. This data should be used as a guide only

Houston Pilots Wind Chart



Forecast Confidence



Example

Sustained wind 13 Knots
Gusts 18 Knots
Wind from the N

WS: 13
G:18
N

Time Knots	Fri 12am	Fri 1am	Fri 2am	Fri 3am	Fri 4am	Fri 5am	Fri 6am	Fri 7am	Fri 8am	Fri 9am	Fri 10am	Fri 11am	Fri 12pm	Fri 1pm	Fri 2pm	Fri 3pm	Fri 4pm	Fri 5pm	Fri 6pm	Fri 7pm	Fri 8pm	Fri 9pm	Fri 10pm	Fri 11pm	Sat 12am	Sat 1am	Sat 2am	Sat 3am	Sat 4am	Sat 5am	Sat 6am	Sat 7am	Sat 8am	Sat 9am	Sat 10am	Sat 11am
610 Bridge	3	2	2	2	2	2	3	3	4	5	5	6	6	6	6	6	5	5	4	3	3	3	3	3	4	4	4	5	6	7	8	9	10	10	11	11
	4	3	3	4	4	4	4	5	5	7	7	9	10	9	9	9	8	7	6	5	5	4	5	5	7	6	7	8	9	11	13	15	15	16	17	17
Kinder 1	3	2	2	2	2	2	3	3	4	5	5	6	6	6	6	6	5	5	4	3	3	3	3	3	4	4	4	5	6	7	8	9	10	10	11	11
	4	3	3	4	4	4	4	5	5	7	7	9	9	9	9	9	8	7	6	5	5	4	5	5	7	6	7	8	9	11	13	15	15	16	17	17
Greens Bayou	3	2	2	2	2	2	3	3	4	5	5	6	6	6	6	6	5	5	4	4	3	3	3	3	4	4	4	5	6	7	8	9	10	10	11	11
	4	4	3	4	4	4	4	5	5	7	7	9	9	8	9	9	8	7	6	6	5	4	5	5	7	6	7	8	9	11	12	14	15	15	16	16
Shell Crude	3	2	2	2	2	2	3	3	4	5	5	6	6	6	6	6	5	5	4	4	3	3	3	3	4	4	4	5	6	7	8	9	10	10	11	11
	5	3	3	4	4	4	4	5	5	7	7	9	9	8	9	9	8	7	6	6	5	4	5	5	7	6	7	8	9	11	12	14	15	15	16	16
Lynchburg Ferries	3	2	2	3	3	3	3	3	4	5	6	6	6	6	6	6	5	5	4	4	3	3	3	3	4	4	5	6	7	8	9	9	10	10	11	11
	5	4	4	4	4	4	5	5	6	7	8	9	9	8	9	9	8	7	6	6	5	4	5	5	7	6	7	8	9	11	12	14	15	15	16	16
Exxon 3	3	3	3	3	3	3	3	4	4	5	6	6	6	6	6	6	5	5	4	4	3	3	3	3	4	4	5	5	6	7	8	9	10	10	11	11
	5	4	4	4	4	4	5	5	6	7	8	9	9	9	9	9	8	8	6	5	5	5	5	6	7	6	7	8	9	11	13	14	14	15	16	16
Morgans Point	3	3	3	3	3	3	4	4	5	6	6	6	6	6	6	6	6	5	4	4	4	4	4	5	6	5	6	7	7	9	10	11	11	11	12	12
	5	4	4	4	4	4	5	5	6	7	8	9	9	9	9	9	8	7	6	5	4	5	5	6	7	7	8	10	12	13	14	15	15	16	16	16
75/76	3	3	3	3	3	3	4	4	5	6	6	6	6	6	6	6	5	4	4	4	4	4	4	5	6	5	6	7	7	9	10	11	12	13	13	13
	4	4	4	4	4	4	5	5	6	7	8	9	9	10	10	10	9	8	7	6	5	5	5	5	6	7	6	7	8	9	10	11	12	13	13	13
63/64	3	3	3	3	3	3	4	4	5	6	6	6	6	6	6	6	5	4	4	4	4	4	4	5	6	5	6	7	7	9	10	11	12	13	13	13
	4	4	4	4	4	4	5	5	6	7	8	9	9	10	10	10	9	8	7	6	5	5	5	5	6	7	6	7	8	9	10	11	12	13	14	14
51/52	3	3	3	3	3	3	4	4	5	6	7	7	7	7	7	7	6	4	4	4	4	4	4	5	6	6	6	7	7	9	10	11	12	12	13	13
	4	4	3	4	4	4	4	6	7	8	9	9	10	9	9	9	9	7	5	5	4	5	6	8	7	7	9	10	11	12	13	14	14	15	15	
37/38	3	3	3	3	3	3	4	4	5	6	7	7	7	7	7	7	6	5	4	4	3	3	3	4	4	6	6	6	8	8	9	10	11	12	12	13
	3	3	3	4	4	4	4	6	7	8	9	9	10	9	9	9	8	7	5	5	4	5	5	7	7	6	8	8	9	10	12	13	14	15	15	
25/26	3	3	3	3	3	3	4	4	5	6	7	8	8	8	8	7	7	6	5	4	4	3	3	4	6	6	5	7	7	8	9	9	10	11	11	12
	3	3	4	4	4	5	5	6	7	9	9	9	10	9	9	9	9	7	6	5	4	5	5	7	7	6	8	8	9	10	12	13	14	14	14	
11/12	3	3	3	4	4	4	5	6	7	8	8	8	8	8	7	7	6	5	4	3	3	4	5	6	7	6	7	8	8	9	10	10	11	11	12	
	3	4	4	5	5	5	6	6	8	9	10	10	11	10	10	10	9	8	7	6	5	5	6	7	8	7	8	10	10	11	12	13	14	14	14	
1 & 2 Bravo	3	4	5	5	5	6	7	7	8	9	9	9	9	8	8	8	8	8	8	7	6	5	5	6	8	9	8	9	10	11	12	12	13	13	13	
	4	5	6	6	6	7	7	8	9	10	11	11	11	11	11	11	10	10	9	9	8	7	6	7	8	8	9	10	11	12	13	14	14	15	15	

NOTE: This is automated data that may/may not agree with the official BAM thinking that's found on the daily slides or special visibility report slides. This data should be used as a guide only

Houston Pilots: Fri. 01/26/2024



Forecast Discussion

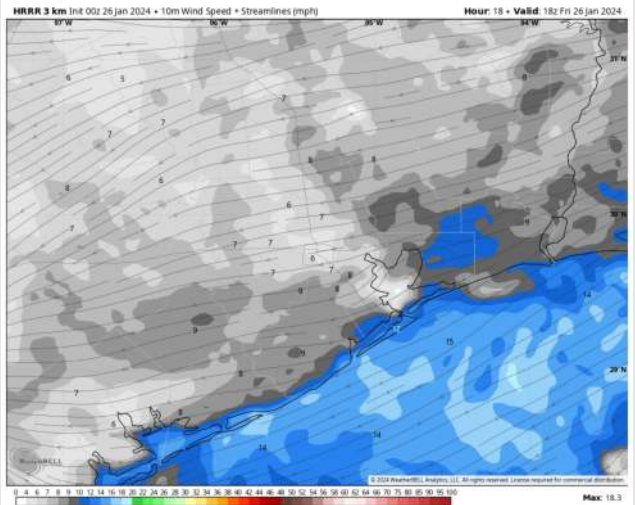
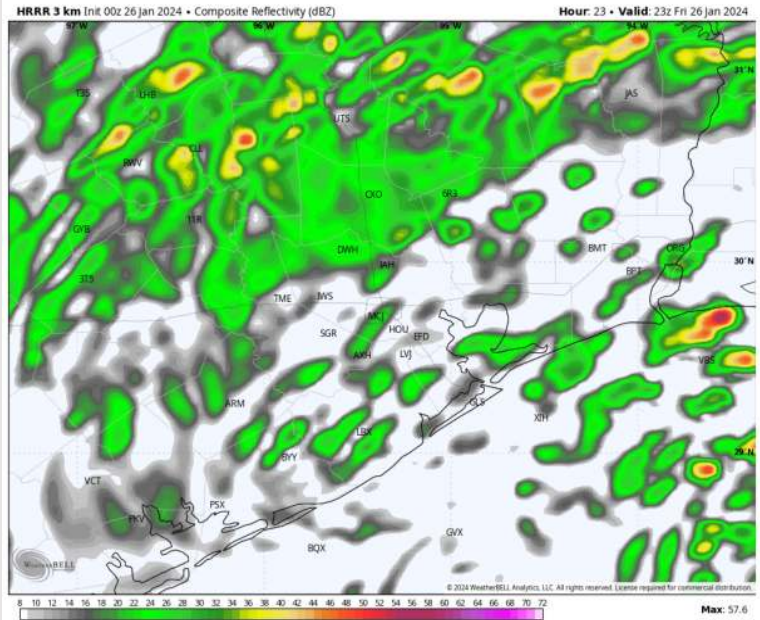
Precip: Favoring 11 AM – 11PM to be the best potential for light showers (30%-40%) to work into the area, impacting all stations. Not favoring additional thunderstorm risks at this time.

Wind: Winds will start out of the ENE shift out of the NW by 10PM with the passing of the front. **N of Morgan's Point:** 4-9 kts favored for the entire day. **S of Morgan's Point:** 8 - 12 kts sustained for the entire day.

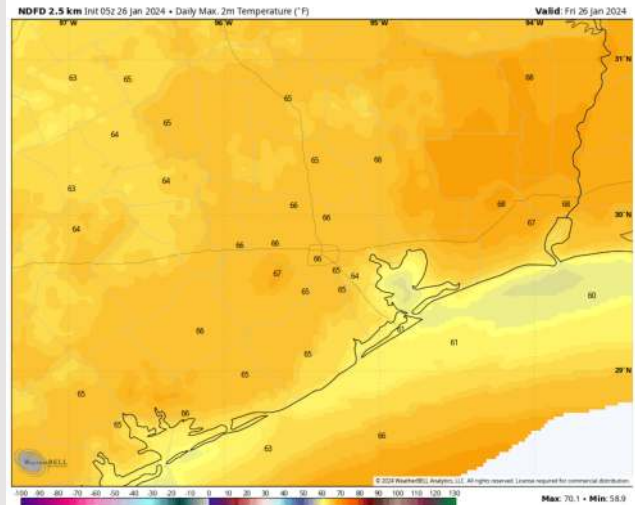
High Temps: **N of Morgan's Point:** Upper 60s F / **Near 70 S of Morgan's Point:** Lower 60s F to upper 50s F.

Visibility: Confidence on exact timing remains low, but sea fog for Friday AM remains a risk. Patchy to widespread fog remains possible for the late evening but will be highly dependent on weak front passage. **Check the Visibility slides above for more details.**

Precip Image: 5 PM CT



Wind Speed:
12 PM CT



High Temps
Today

Houston Pilots: Sat. 01/27/2024



Forecast Discussion

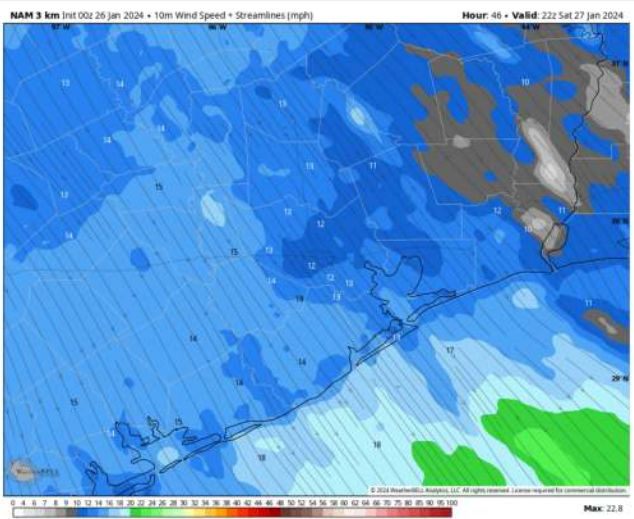
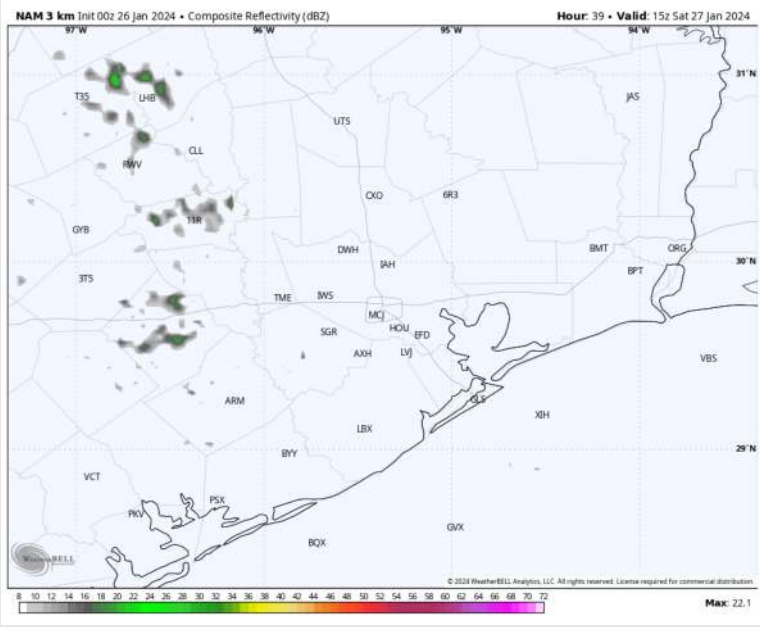
Precip: Isolated light showers will be possible for stations N of Morgan's Point through 12 PM. Favoring dry conditions for the remainder of the day.

Wind: Winds will be out of the NW for the entire day. **N Morgan's Point:** Winds will be 6 – 9 kts through 7AM, before becoming 9 – 13 kts for the remainder of the day. **S of Morgan's Point:** Winds will start at 6 – 9 kts through 7AM, before becoming 11 – 16kts for the remainder of the day. A few gusts of up to 20 kts can't be ruled out.

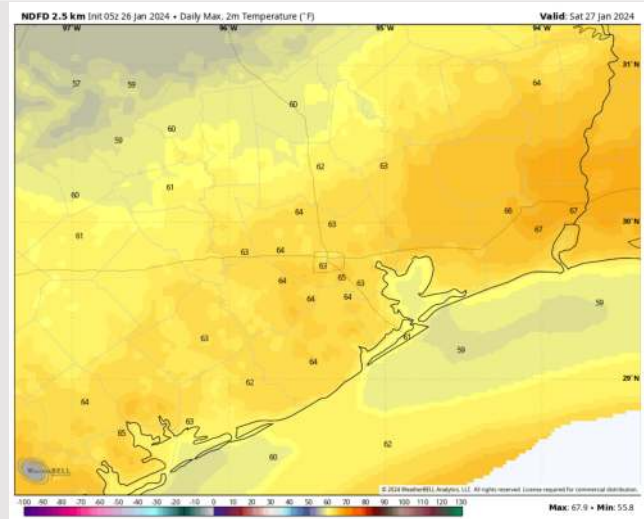
High Temps: **N of Morgan's Point:** Mid 60s F. **S of Morgan's Point:** Upper 50s F

Visibility: Lower confidence exists on how far into SAT AM the FRI PM fog risks can continue, but the potential for more fog for Stations N of Morgan's Point remains.

Precip Image: 9 AM CT



Wind Speed:
4 PM CT



High Temps
Saturday

Houston Pilots: Sun. 01/28/2024



Forecast Discussion

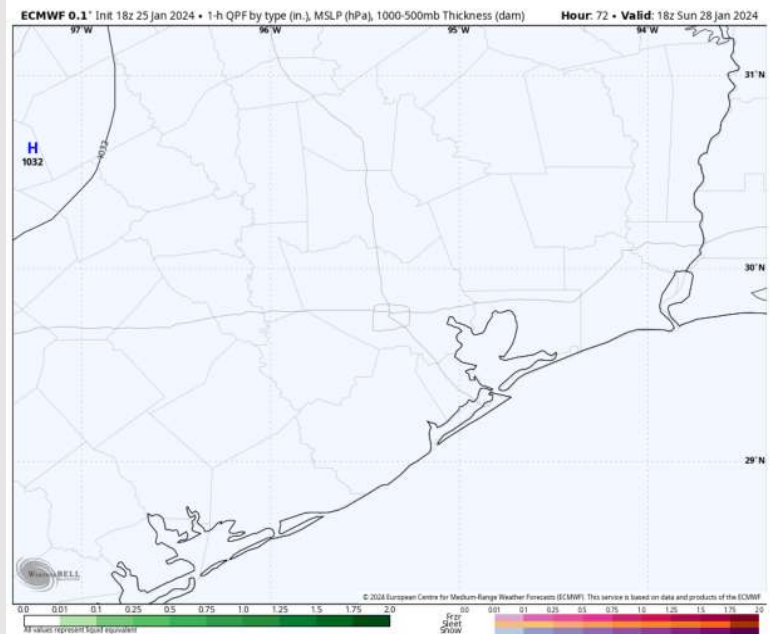
Precip: Favoring dry conditions throughout the day Sunday.

Wind: Winds out of the NW throughout the day. **N Morgan's Point:** Winds at 4-9 kts throughout the day Sunday. **S of Morgan's Point:** Winds at 8-13 kts through the AM will then decrease to 5-10 kts by 4 PM. A few gusts of up to 20 kts cannot be ruled out at the Boarding Station through 6 PM.

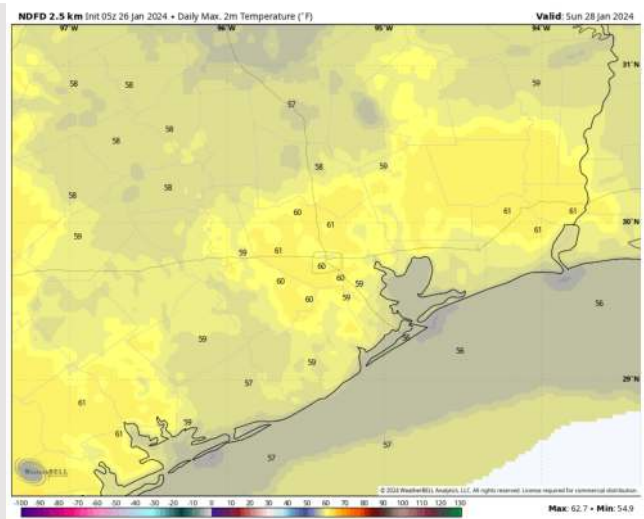
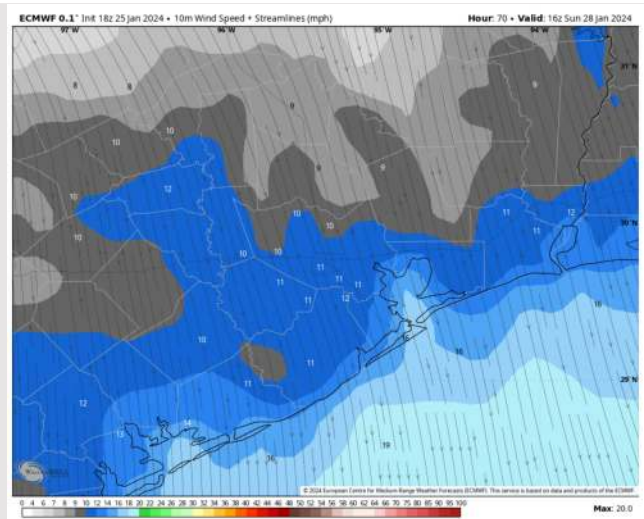
High Temps: **N of Morgan's Point:** Upper 50s-Near 60 F. **S of Morgan's Point:** Mid 50s F.

Visibility: No visibility concerns favored for Sunday.

Precip Image: 12 PM CT



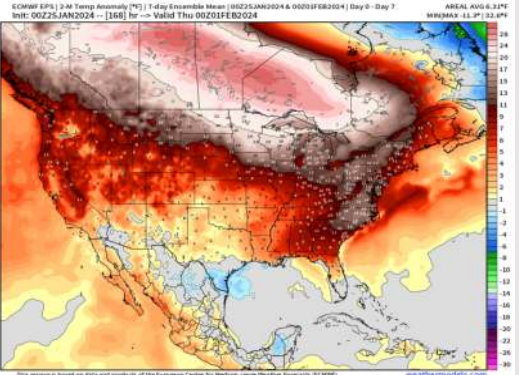
Wind Speeds:
10 AM CT



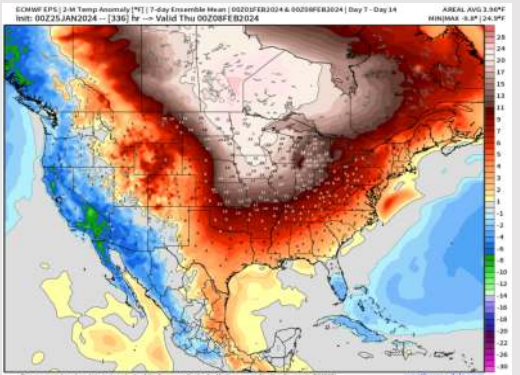
High Temps
Sunday

Houston Pilots: 1/26/24

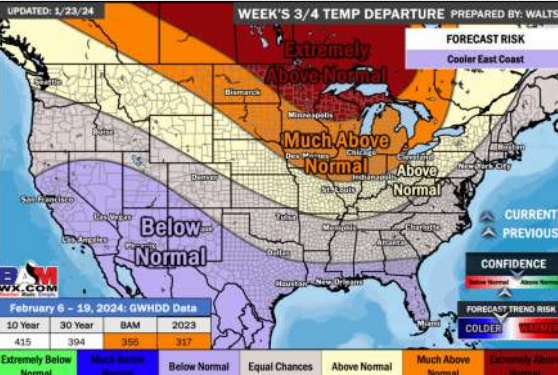
Next 7 Day Temperature Departure



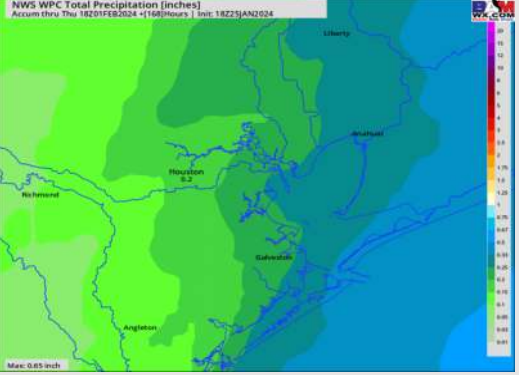
8-14 Day Temperature Departure



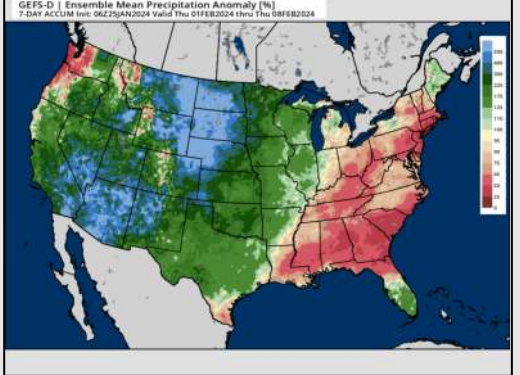
15-30 Day Temperature Departure



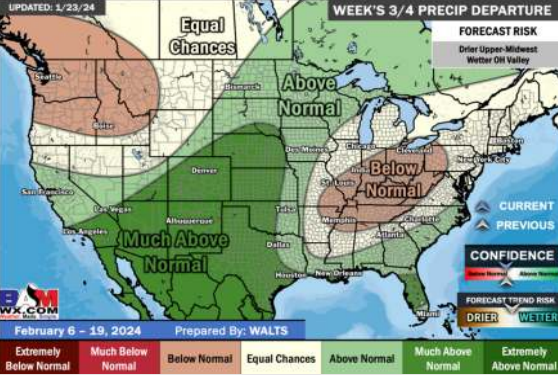
Next 7 Day Total Precipitation



8-14 Day % of Average Precip.



15-30 Day % of Average Precip.



- A few rain opportunities will work through Friday and Saturday. Slightly above normal to near normal temperatures favored for the week ahead.
- Near normal precipitation chances are at play during the week 2 timeframe. Temps expected to be above normal.
- Below normal temperatures and much above normal chances for precipitation are favored in the weeks ¾ timeframe.