

# Houston Pilots Forecast Package



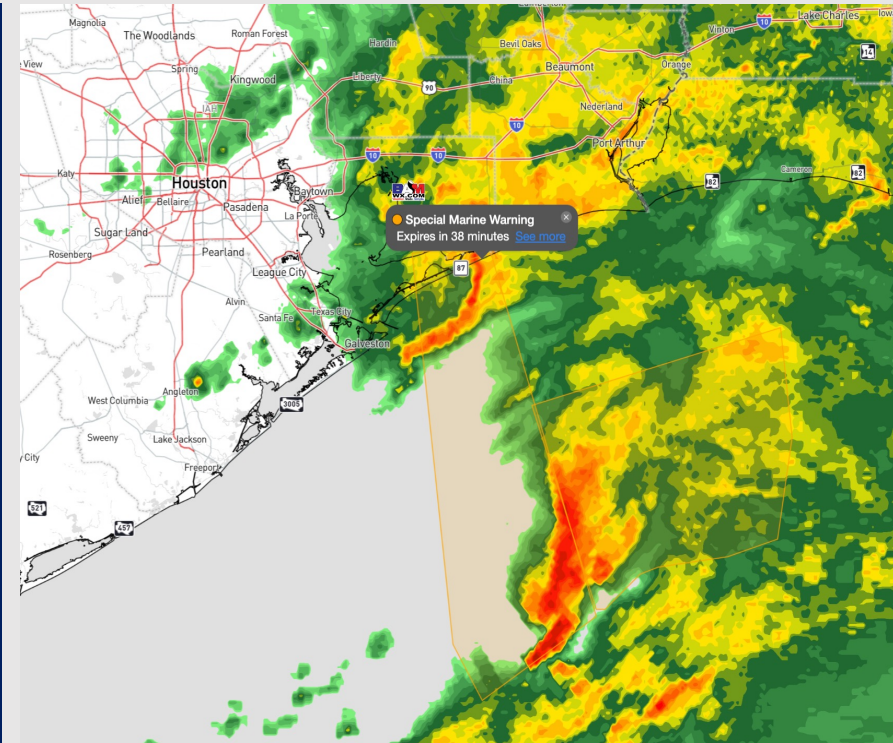
Updated: 2:30 AM CT

Wednesday, January 3, 2024

Forecaster: John Kemper

## Weather Headlines

- Wind gusts will continue to decrease as front / storms push further to the east.
- Fog does not look to be a concern in the forecast outside of a low-end risk to watch Friday AM
- Friday AM will be the next chance of scattered showers as a front approaches the area.



**Radar/NWS Alerts: 2:20 AM CT**



As always, please do not hesitate to reach out to us with any forecast questions via the chat option on the Weather Porthole or our on-call number, **(317)-560-8122** press 1 for forecast questions.

# Houston Pilots Extended Range Visibility Report



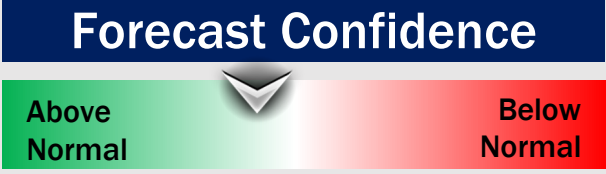
## Saturday 1/6/24

No visibility concerns for Saturday.



## Sunday 1/7/24

No visibility concerns for Sunday.



## Monday 1/8/24

No visibility concerns for Monday.



## Chance for Fog

Saturday AM	Unlikely
Saturday PM	Unlikely
Sunday AM	Unlikely
Sunday PM	Unlikely
Monday AM	Unlikely
Monday PM	Unlikely

# Houston Pilots Visibility Chart (miles)



Time	Wed 1am	Wed 2am	Wed 3am	Wed 4am	Wed 5am	Wed 6am	Wed 7am	Wed 8am	Wed 9am	Wed 10am	Wed 11am	Wed 1pm	Wed 2pm	Wed 3pm	Wed 4pm	Wed 5pm	Wed 6pm	Wed 7pm	Wed 8pm	Wed 9pm	Wed 10pm	Wed 11pm	Thu 12am	Thu 1am	Thu 2am	Thu 3am	Thu 4am	Thu 5am	Thu 6am	Thu 7am	Thu 8am	Thu 9am	Thu 10am	Thu 11am	Thu 12pm			
610 Bridge	2	2	3	3	5	3	4	2	3	6	9	10	10	10	10	10	10	10	10	10	10	10	10	10	7	6	6	4	4	6	6	10	10	10	10			
Kinder 1	2	2	3	3	5	3	4	2	3	6	9	10	10	10	10	10	10	10	10	10	10	10	10	10	7	7	6	5	5	6	6	10	10	10	10			
Greens Bayou	2	2	3	4	4	4	4	2	3	6	9	10	10	10	10	10	10	10	10	10	10	10	10	10	8	8	7	7	7	7	7	10	10	10	10			
Shell Crude	2	3	3	4	4	5	4	3	4	6	9	10	10	10	10	10	10	10	10	10	10	10	10	10	9	9	9	9	9	9	9	10	10	10	10			
Lynchburg Ferries	2	3	3	4	4	5	4	3	4	6	10	10	10	10	10	10	10	10	10	10	10	10	10	10	9	9	9	9	9	9	9	10	10	10	10			
Exxon 3	2	3	3	4	4	5	4	3	4	6	10	10	10	10	10	10	10	10	10	10	10	10	10	10	9	9	9	9	9	9	9	10	10	10	10			
Morgans Point	2	3	3	4	4	5	4	3	4	6	9	10	10	10	10	10	10	10	10	10	10	10	10	10	9	9	9	9	9	9	9	10	10	10	10			
75/76	2	3	4	4	5	6	5	3	4	6	9	10	10	10	10	10	10	10	10	10	10	10	10	9	9	9	9	9	9	9	9	9	10	10	10	10		
63/64	2	3	4	4	5	6	6	3	4	6	9	10	10	10	10	10	10	10	10	10	10	10	10	10	9	9	9	9	9	10	10	9	10	10	10	10		
51/52	2	3	4	4	6	6	6	4	4	7	9	10	10	10	10	10	10	10	10	10	10	10	10	10	10	10	10	10	10	10	10	10	10	10	10	10	10	
37/38	2	3	4	4	6	6	6	4	5	7	10	10	10	10	10	10	10	10	10	10	10	10	10	10	10	10	10	10	10	10	10	10	10	10	10	10	10	10
25/26	2	3	5	6	6	6	6	4	5	9	10	10	10	10	10	10	10	10	10	10	10	10	10	10	10	10	10	10	10	10	10	10	10	10	10	10	10	10
11/12	2	2	5	6	6	6	6	4	5	9	10	10	10	10	10	10	10	10	10	10	10	10	10	10	10	10	10	10	10	10	10	10	10	10	10	10	10	10
1 & 2 Bravo	2	2	4	5	6	6	6	4	5	9	10	10	10	10	10	9	10	10	10	10	10	10	10	10	10	10	10	10	10	10	10	10	10	10	10	10	10	10

**NOTE: This is automated data that may/may not agree with the official BAM thinking that's found on the daily slides or special visibility report slides. This data should be used as a guide only**

# Houston Pilots Wind Chart



## Forecast Confidence



## Example

Sustained wind 13 Knots  
Gusts 18 Knots  
Wind from the N

WS: 13  
G:18  
N

Time Knots	Wed 1am	Wed 2am	Wed 3am	Wed 4am	Wed 5am	Wed 6am	Wed 7am	Wed 8am	Wed 9am	Wed 10am	Wed 11am	Wed 1pm	Wed 2pm	Wed 3pm	Wed 4pm	Wed 5pm	Wed 6pm	Wed 7pm	Wed 8pm	Wed 9pm	Wed 10pm	Wed 11pm	Thu 12am	Thu 1am	Thu 2am	Thu 3am	Thu 4am	Thu 5am	Thu 6am	Thu 7am	Thu 8am	Thu 9am	Thu 10am	Thu 11am	Thu 12pm		
610 Bridge	6	7	6	6	4	6	7	7	6		6	6	4	4	6	5	4	4	4	4	4	4	4	4	4	4	3	3	3	3	4	4	6	7	7	8	
	15	17	16	16	9	11	13	14	13		11	9	7	8	8	7	7	6	6	6	6	6	6	6	6	5	5	5	5	5	5	6	7	9	10	10	12
	NE	NNE	ENE	E	NNE	NNW	NNW	N	E		N	N	N	NNE	NNE	N	N	ENE	N	N	NNE	NNE	NNE	NE	NE	NE	NE	NE	ENE	ENE	ENE	E	E	E	E		
Kinder 1	7	8	6	6	4	6	7	7	6		6	5	4	4	6	5	4	4	4	4	4	4	4	4	4	3	3	3	3	4	4	6	7	7	8		
	15	18	16	16	9	11	13	14	13		11	9	7	8	8	7	7	6	6	6	6	6	6	6	5	5	5	5	5	6	7	9	10	10	11		
	ENE	NNE	ENE	E	NNE	NNW	NNW	N	SE		NNE	N	N	NNE	N	N	ENE	N	N	NNE	NNE	NNE	NE	NE	NE	NE	NE	ENE	ENE	ENE	E	E	E	E			
Greens Bayou	6	9	6	6	4	7	7	7	6		6	5	5	5	6	5	4	4	4	4	4	4	4	4	4	3	3	3	3	4	4	6	7	7	8		
	13	20	16	16	9	11	14	15	13		11	9	8	8	8	7	7	6	6	6	6	6	6	6	6	5	5	5	5	6	7	9	10	10	11		
	NE	NNE	ENE	E	NNE	NNW	N	N	SSE		NNE	N	N	N	N	N	NNE	NE	N	SE	N	NNE	NNE	NE	NE	NE	NE	NE	ENE	ENE	ENE	E	E	E	E		
Shell Crude	6	9	6	6	4	7	7	8	7		6	5	5	4	6	5	4	4	4	4	4	4	4	4	4	3	3	3	3	4	4	5	6	7	8	8	
	13	20	16	17	11	11	14	15	14		12	9	8	8	8	8	7	6	6	6	6	6	6	6	6	6	5	5	5	6	6	7	9	10	10	11	
	NE	NNE	ENE	E	NNE	NNW	NNW	N	W		NNE	NNE	N	N	N	ENE	NE	N	SE	N	SE	N	NNE	NNE	NNE	NE	NE	NE	ENE	ENE	ENE	E	E	E	E		
Lynchburg Ferries	5	10	6	6	4	7	7	8	7		7	6	5	5	7	6	5	4	4	4	4	4	4	4	4	3	3	3	4	4	5	6	7	8	8		
	13	20	17	17	11	11	14	15	14		12	9	8	8	9	8	7	6	6	6	6	6	6	6	6	5	5	5	6	6	7	9	10	10	11		
	NNE	NNE	ENE	E	NNE	NNW	NNW	N	WNW		NNE	ENE	N	N	N	E	WSW	ESE	ESE	W	N	NNE	NNE	NNE	NE	NE	NE	NE	ENE	ENE	ENE	E	E	E	E		
Exxon 3	7	10	7	7	5	7	8	8	7		6	6	5	5	7	6	5	5	5	4	4	4	4	4	4	4	4	4	4	4	5	5	7	7	8	8	
	14	20	18	18	14	12	14	16	14		12	9	8	8	9	8	7	6	6	6	6	6	6	6	6	6	5	5	6	7	9	10	10	11			
	NNE	NNE	ENE	E	NE	NNW	NNW	N	W		NNE	E	N	N	N	SE	NNW	SSE	SE	SSW	N	NNE	NNE	NNE	NE	NE	NE	NE	ENE	ENE	ENE	E	E	E	E		
Morgans Point	9	12	9	9	8	7	9	10	8		7	6	5	5	8	7	6	6	5	5	5	5	5	5	5	5	5	5	6	7	7	8	8	9	9		
	16	21	18	18	16	12	14	17	14		12	9	8	8	10	9	8	7	7	7	7	6	6	6	6	6	6	6	7	7	8	9	10	10	11	12	
	NNE	NNE	ENE	E	ENE	NNW	NNW	N	NNW		N	ENE	NNE	N	N	ENE	SW	ENE	ENE	E	N	NNE	NNE	NNE	NE	NE	NE	NE	ENE	ENE	ENE	E	E	E	E		
75/76	13	14	13	15	13	11	13	13	11		10	7	6	6	9	9	8	8	7	7	7	7	7	7	7	7	7	7	8	9	9	10	10	10	10	10	
	17	20	18	19	17	12	15	18	15		13	10	8	8	11	10	10	9	8	8	8	8	8	8	8	7	8	7	8	9	10	11	12	11	12	13	
	NNE	NNE	NE	E	E	SSE	NNW	NNW	N		N	N	ENE	N	N	NNE	N	N	N	N	NNE	NNE	NNE	NE	NE	NE	NE	NE	ENE	ENE	ENE	E	E	E	E		
63/64	16	17	15	16	15	12	14	15	13		12	8	7	6	9	10	9	9	8	7	7	7	7	8	7	7	7	8	8	9	10	11	10	10	10	10	
	19	19	19	21	18	13	15	18	15		13	11	9	8	11	11	10	10	9	8	8	8	8	8	8	8	8	9	10	11	12	12	12	12	13	13	
	NNE	NNE	NNE	ENE	ENE	NNE	NNW	NNW	N		N	N	NE	N	N	N	N	N	NNE	NNE	NNE	NNE	NNE	NE	NE	NE	NE	ENE	ENE	ENE	ENE	ENE	E	E	E	E	
51/52	17	18	15	16	16	11	14	16	14		13	9	7	6	9	10	9	9	8	7	7	7	7	8	7	7	7	8	8	9	10	10	10	10	10	10	
	19	21	19	21	19	12	15	18	16		14	11	10	8	11	11	10	9	9	8	8	8	8	8	8	8	8	9	10	11	11	11	12	12	14	14	
	NNE	NNE	NNE	ENE	ENE	NNE	NNW	NNW	N		N	ESE	NNE	NE	N	N	N	N	N	N	NNE	NNE	NNE	NE	NE	NE	NE	ENE	ENE	ENE	ENE	ENE	E	E	E	E	
37/38	17	19	16	16	16	10	14	16	15		13	10	8	7	9	9	9	8	7	7	7	7	7	7	7	7	7	7	8	9	10	10	10	11	12	12	
	20	23	20	20	20	12	15	18	17		15	11	10	9	11	10	10	9	8	7	7	8	8	8	8	8	8	8	9	10	11	11	11	12	13	14	
	NNE	NNE	NNE	NE	ENE	NE	NNW	NNW	N		NE	W	ESE	NE	N	N	N	NNE	NNE	NNE	NNE	NNE	NE	NE	NE	NE	NE	ENE	ENE	ENE	ENE	E	E	E	E		
25/26	17	18	16	15	16	11	12	15	15		13	10	8	7	9	8	8	7	6	7	7	7	7	7	7	7	7	7	8	8	9	10	11	12	12	12	
	21	23	20	20	22	14	14	18	17		15	11	10	9	10	10	9	9	8	7	8	8	8	8	8	7	8	8	9	10	11	12	13	14	14	14	
	NNE	NNE	ENE	NE	ENE	ENE	NW	NNW	N		NNE	NW	S	N	N	N	N	NNE	NNE	NNE	NNE	NNE	NE	NE	NE	NE	NE	ENE	ENE	ENE	ENE	ENE	E	E	E	E	
11/12	17	16	15	16	18	13	12	14	14		12	8	8	7	9	8	8	8	7	7	7	7	7	7	7	7	7	8	8	9	9	10	11	11	12	13	
	22	21	21	21	23	16	14	17	17		15	10	10	9	10	10	9	9	8	8	8	8	8	8	8	8	8	8	9	10	10	11	12	13	13	14	
	NNE	NNE	E	NE	ENE	ENE	N	NNW	N		ENE	NNW	SE	N	NE	N	N	NNE	NNE	NNE	NNE	NE	NE	NE	NE	NE	NE	ENE	ENE	ENE	ENE	E	E	E	E		
1 & 2 Bravo	23	19	21	22	22	18	14	16	16		14	9	9	8	10	10	10	10	9	9	9	9	9	9	9	9	10	11	12	13	14	14	14	14	14		
	25	21	23	24	24	19	15	18	17		15	10	10	9	11	11	11	11	10	10	10	10	10	10	10	10	10	11	12	13	14	15	15	15	16		
	NNE	NNE	NNE	NE	ENE	ENE	ESE	NNW	N		SW	WNW	N	NNE	NNE	N	N	N	N	NNE	NNE	NNE	NE	NE	NE	NE	ENE	ENE	ENE	ENE	E	E	E	E	E		

Data Error

## Forecast Discussion

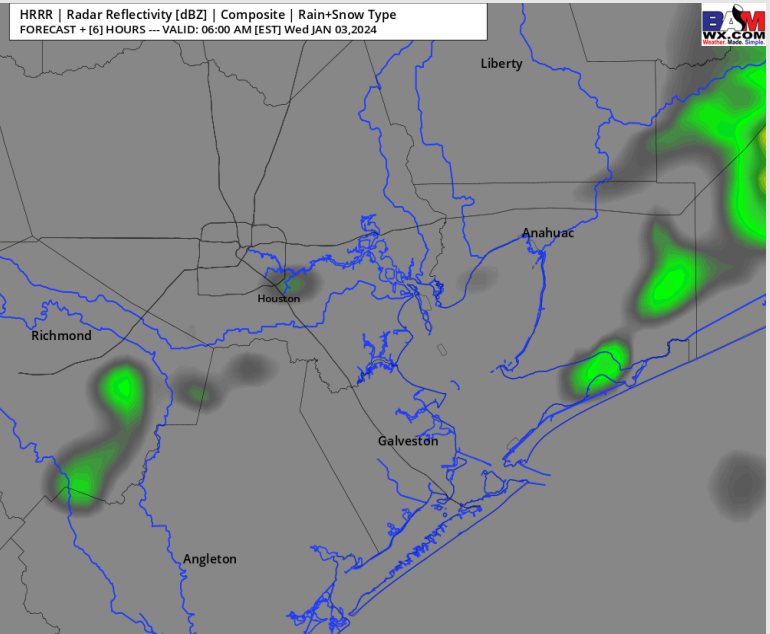
**Precip:** Moderate to heavy rain will fully exit the area by 3AM-CT. A few light, scattered showers will remain possible through 9AM-CT (20%). Anticipating dry conditions for the remainder of the day.

**Wind:** Cold front continues to work it's way through the area behind storms. Winds will gradually shift from the NE to the N by 6AM-CT. **N Morgan's Point:** 9-14 kt winds will calm to 5-10 kts by 6 AM. Towards 5PM winds calm more to 3-7 kts. **S of Morgan's Point:** From 3 AM - 12 PM, winds of 14 - 19 kts are favored. Winds will calm to 11 - 14 kts by 12 PM and finally 8 - 13 kts post 7 PM. Winds at the Boarding Station 3AM to 6AM will remain at 17 - 24 kts, weakening to 12 - 16 kts by 9AM and continuing to remain there throughout the day. **Gusts to 28 - 34 kts possible at 11/12 and the Boarding Station through 7AM.** North of the Boarding Station can see up to 21 - 23 kts through 9AM.

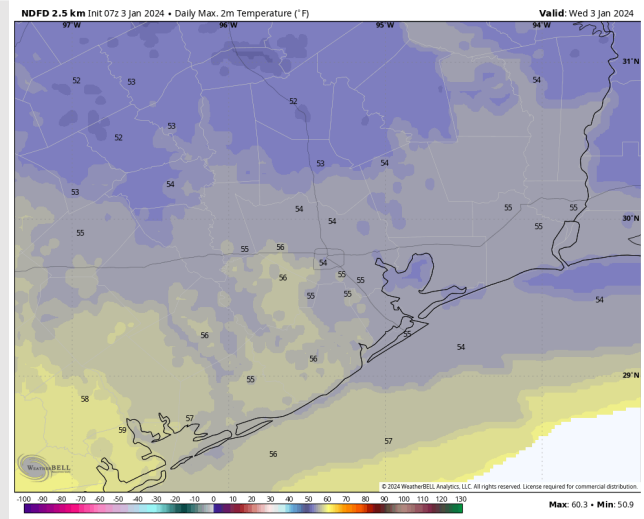
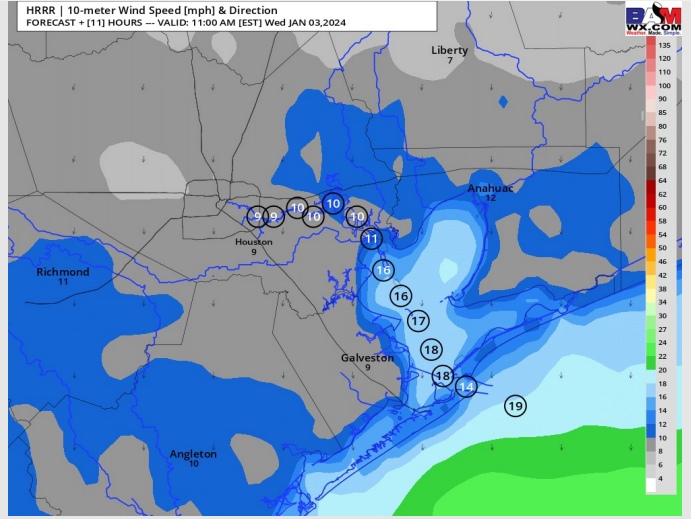
**High Temps:** N of Morgan's Point: Mid 50s F. S of Morgan's Point: Mid 50s F

**Visibility:** Not anticipating any fog concerns for the rest of the day.

## Precip Image: 5 AM CT



Wind Speed:  
10 AM CT



High Temps  
Wednesday



# Houston Pilots: Thu. 01/04/2024



## Forecast Discussion

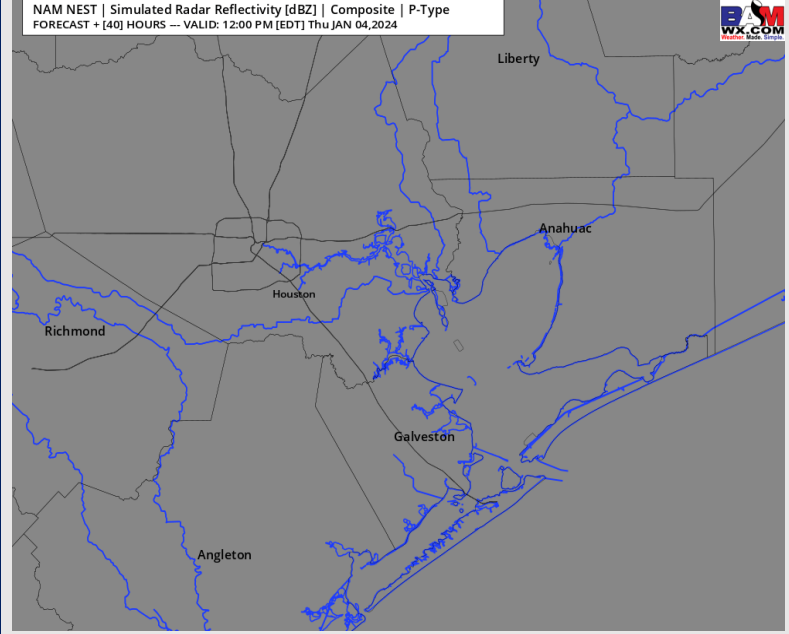
**Precip:** Dry Conditions are favored for Thursday.

**Wind:** Winds will rotate from the N to E between 2AM and 8AM. **N Morgan's Point:** 3 - 7 kits prior to 12 PM, increasing to 7 - 12 kts thereafter. **S of Morgan's Point:** 4 - 9 kts through 8 AM, increasing to 10 - 15 kts by 1 PM. Winds at the Boarding Station a touch higher at 13 - 17 kts by 1 PM.

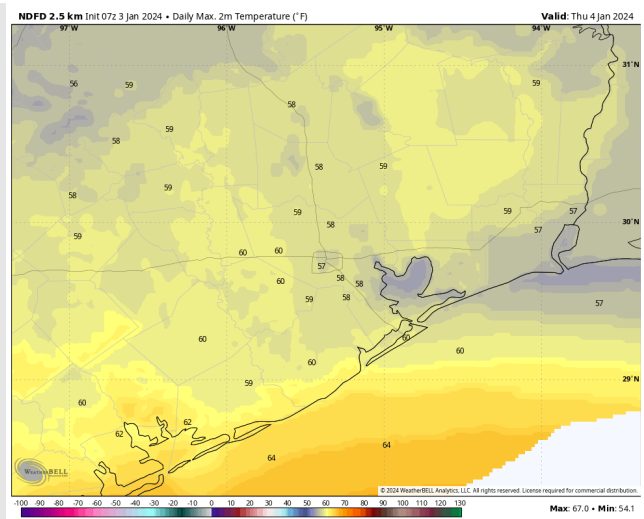
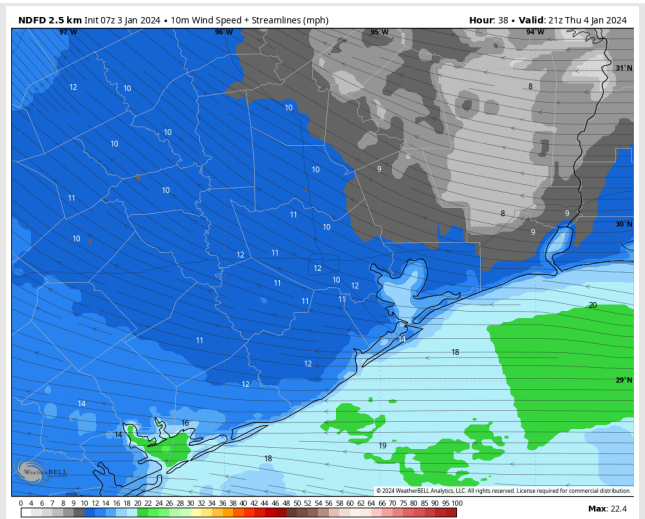
**High Temps:** **N of Morgan's Point:** Mid to upper 50s F. **S of Morgan's Point:** Mid 50s F. Near 60 F at the Boarding Station.

**Visibility:** Confidence remains low in regards to fog concerns, but at this time favoring this risk to patchy in nature and for stations N of Morgan's Point during the late evening hours.

## Precip Image: 11 AM CT



Wind Speed:  
3 PM CT



High Temps  
Thursday

# Houston Pilots: Fri. 01/05/2024



## Forecast Discussion

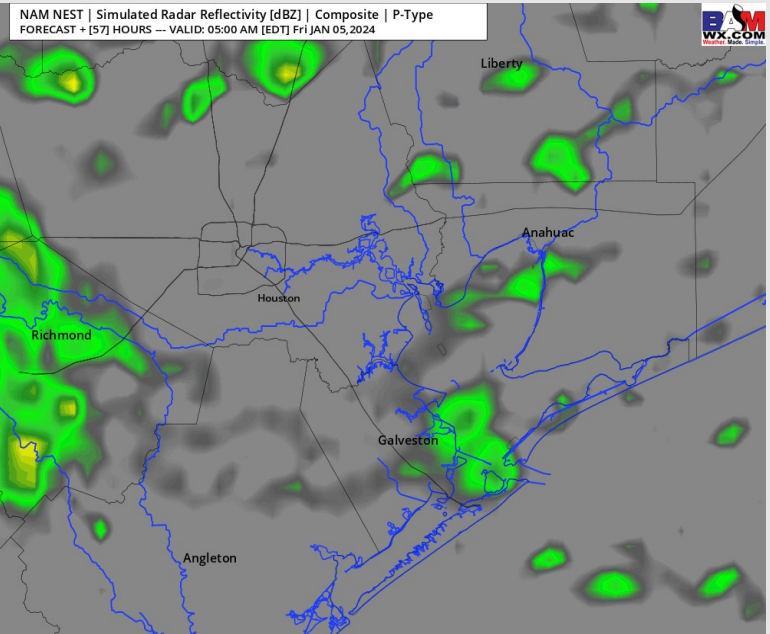
**Precip:** Favoring light drizzle to be possible between 2AM and 9AM for all stations. Lower confidence in terms of exit time, but risk would be light drizzle sticks around through the early afternoon.

**Wind:** Winds will be variable throughout the day given the passage of a front. Winds will start out of the ESE before veering out of the SE by 12PM. From 12PM-6PM, winds will veer from the SE to out of the N as the front passes. **N of Morgan's Point:** 9 -14 kts for the entire day. **S of Morgan's Point:** Winds of 15 – 20 kts will be likely for the entire day, closer to 17 – 22 kts for the boarding station. Continuing to monitor these aggressive trends associated with this system in terms of wind. **Gof up to 24 kts will be possible across all stations starting from 12PM – 9PM , with gusts locally up to 30 kts for the Boarding station.**

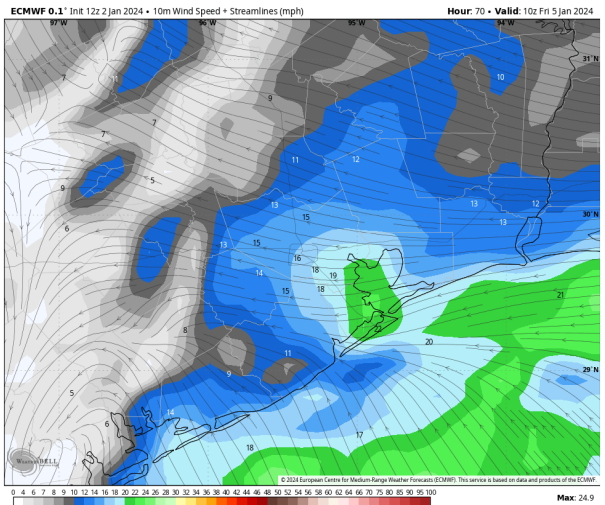
**Low Temps:** **N of Morgan's Point:** Low 60s F **S of Morgan's Point:** Mid 60s F

**Visibility:** Confidence remains low in regards to fog concerns, but at this time favoring fog potential between 12AM and 9AM, with risks for all stations.

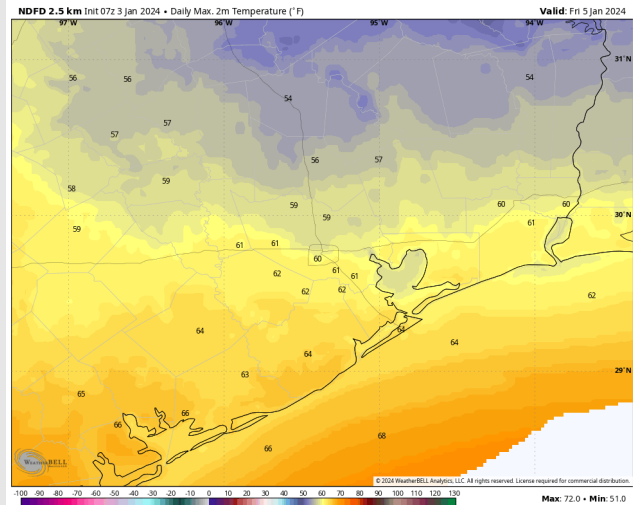
## Precip Image: 4 AM CT



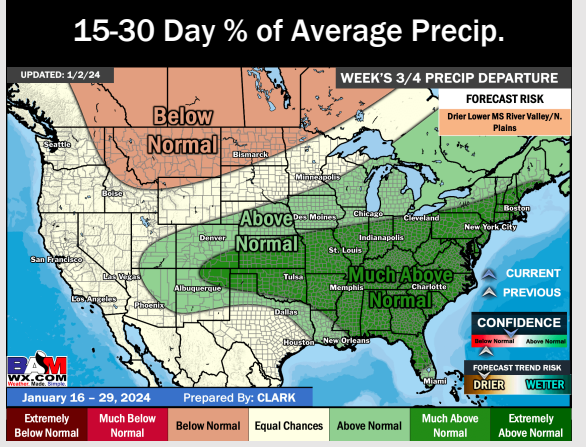
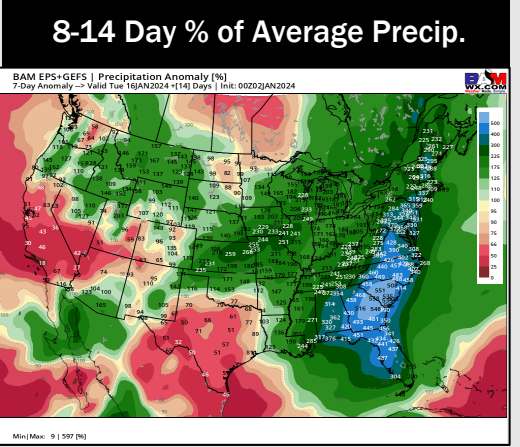
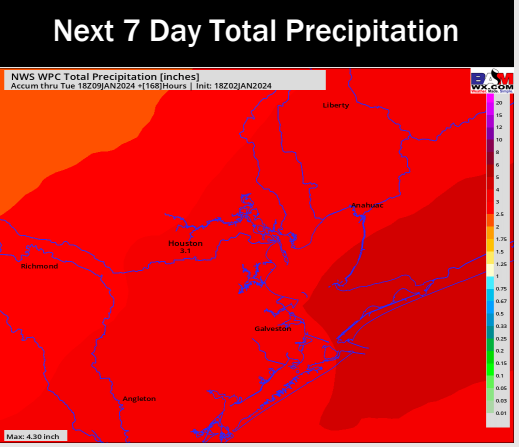
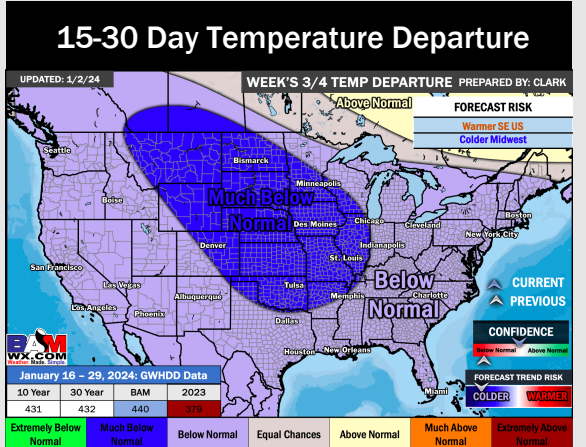
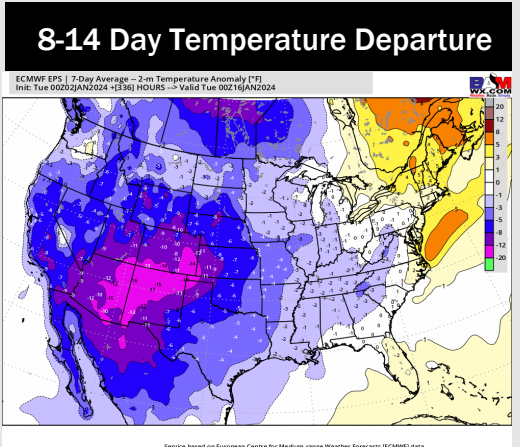
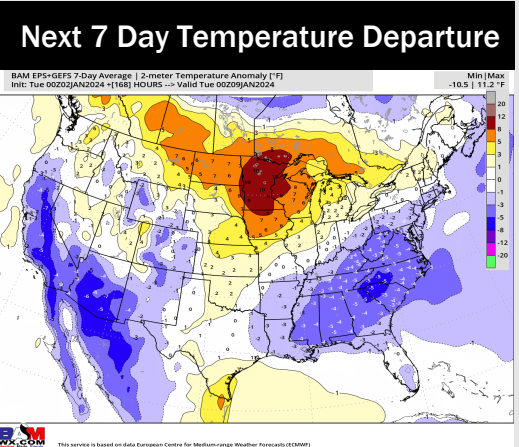
Wind Speed:  
4 AM CT



High Temps  
Friday



# Houston Pilots: 1/3/24



- With exiting rains WED AM, the next wave of rain showers will enter near early Friday AM. Seasonable temperatures anticipated this week.
- Cooler temperatures and near normal rainfall is favored for the week 2 timeframe wetter risks are valid, however.
- Below normal temperatures and seasonal chances for precipitation are favored in the weeks 3/4 timeframe.