

# Houston Pilots Forecast Package



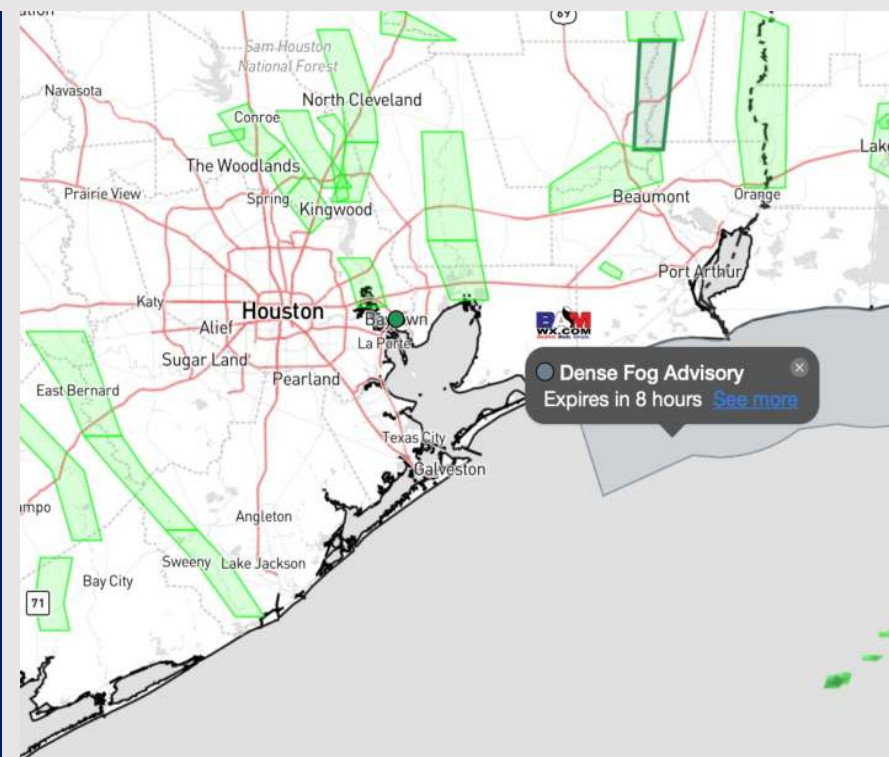
Updated: 12:45 AM CT

Friday, January 26, 2024

Forecaster: Tyler Riggles

## Weather Headlines

- Anticipating shower risks for Friday and Saturday.
- Favoring winds to remain fairly calm over the next 24 hours before winds pick up for the weekend and some gusts of up to 20 kts will be in play.
- **Sea fog threats continuing this morning into the PM with lower confidence remaining for exact start time possible evening coverage. Please see visibility slides for more info.**



**Radar/NWS Alerts: 12:39 AM CT**

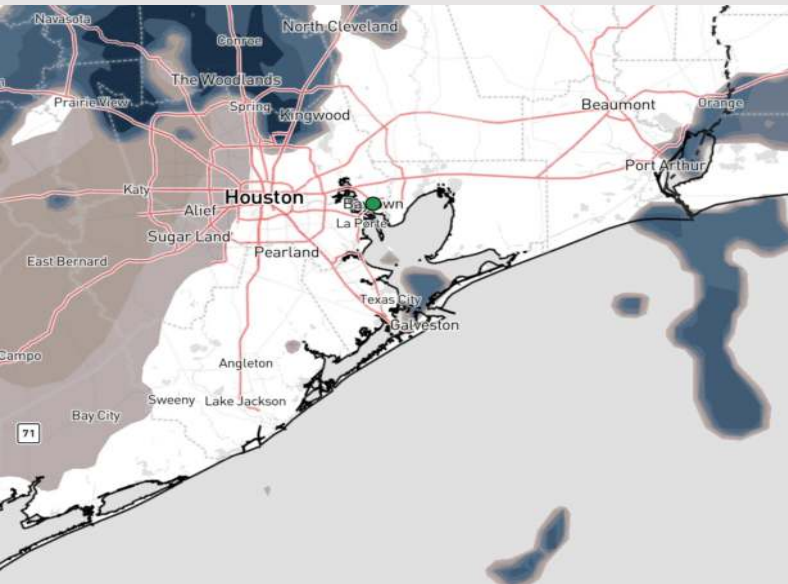


As always, please do not hesitate to reach out to us with any forecast questions via the chat option on the Weather Porthole or our on-call number, **(317)-560-8122** press 1 for forecast questions.

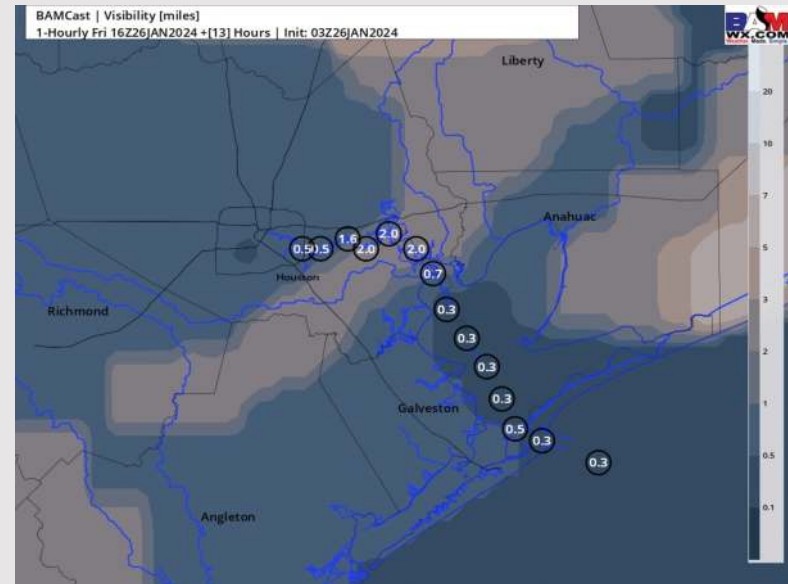
# Houston Pilots Visibility Report



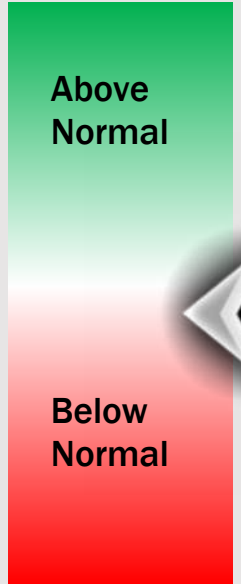
## Current Visibility as of 12 AM CT



## 10 AM CT FRI Visibility



## Confidence



TIMEFRAME DISCUSSED	THREAT
CURRENT - 11 AM FRI	Medium-High

- **N of Morgan's Point:** Misty conditions with visibilities of 5-6 miles continue to gradually build in. Anticipating the fog risk to steadily become patchy to widespread and dense in nature for stations N of Morgan's Point from 3-6 AM-CT Friday. The fog risk will be the most widespread and dense with visibilities of less than a mile after 6 AM FRI. The fog risk for these Stations will then begin to decrease at 11 AM-CT Friday.
- **S of Morgan's Point:** Patchy dense fog will continue to work into the Bay area, reducing visibility to 1 - 3 miles with a few instances of less than 1 mile mixing in. Lower confidence remains on how late the start time of fog coverage can be however watching for coverage to expand across the Bay and into the Gulf as early as 2 AM, with fog coverage becoming the most widespread and dense with visibilities of less than a mile through 11 AM FRI. Lower confidence remains on how long patchy fog risks can continue beyond 11 AM FRI.

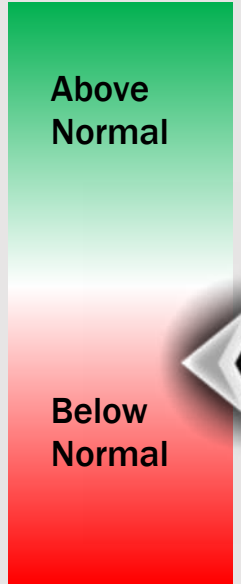
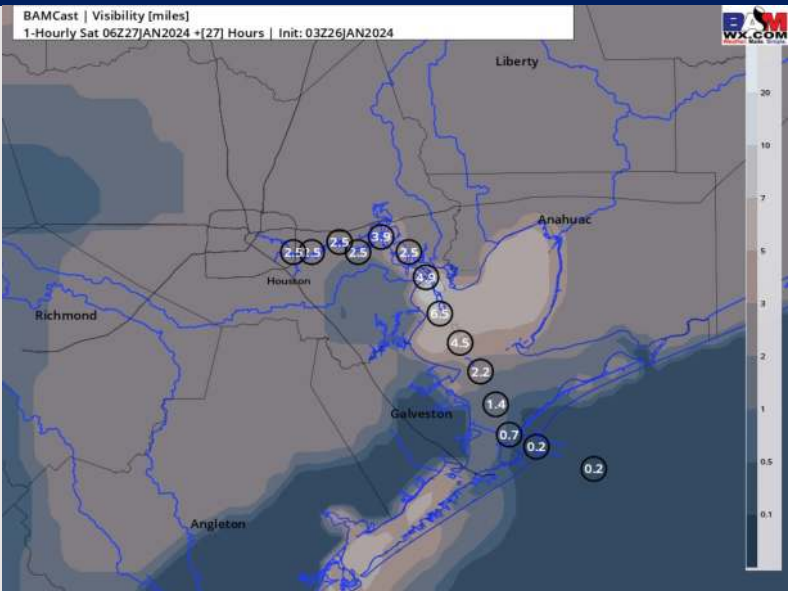
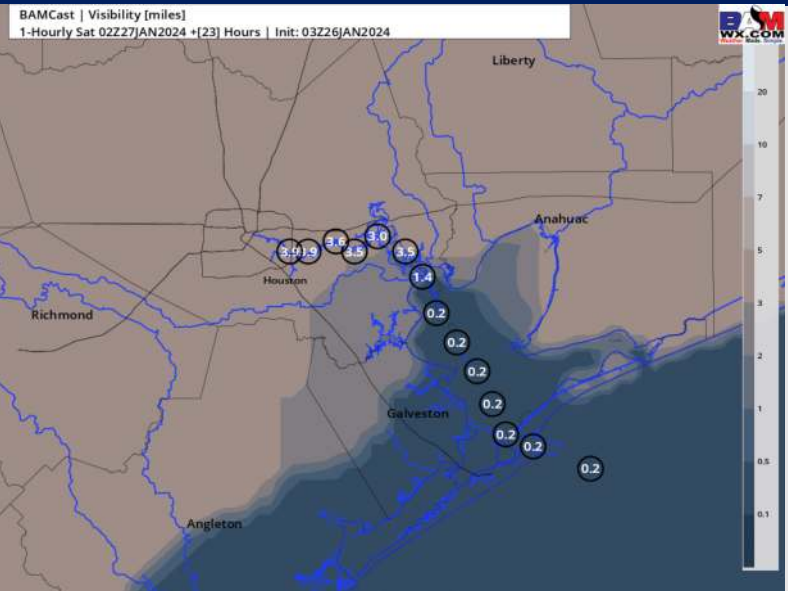
# Houston Pilots Visibility Report



## 8 PM CT FRI Visibility

## 12 AM CT SAT Visibility

## Confidence



TIMEFRAME DISCUSSED	THREAT
11 AM FRI - 1 AM SAT	Medium

- Confidence is lower than normal for patchy fog risks as pockets of rain mixing in could make it more difficult for fog development.
- **N of Morgan's Point:** Not anticipating much in the way of impacts from fog for stations N of Morgan's Point during the afternoon. However, persistent misty conditions can reduce visibilities to 5-6 miles.
- **S of Morgan's Point:** Patchy fog can stick around in the Bay after 11 AM through the afternoon. 4 PM-CT FRI is when the better patchy fog is expected to return to the Bay, impacting stations S of Morgan's Point, including the Boarding Station. This fog risk is then favored to become widespread and dense around 8 PM, lasting through 1 AM-CT. Visibility may be reduced to 1 - 3 miles with patchy instances of visibility being reduced to 1 mile or less.

# Houston Pilots Extended Range Visibility Report



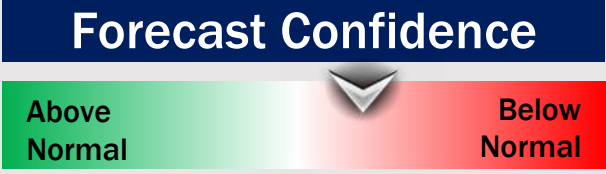
## Monday 1/29/24

No visibility concerns favored for Monday.



## Tuesday 1/30/24

No visibility concerns favored for Tuesday.



## Wednesday 1/31/24

No visibility concerns favored for Wednesday.



## Chance for Fog

Monday AM	Unlikely
Monday PM	Unlikely
Tuesday AM	Unlikely
Tuesday PM	Unlikely
Wednesday AM	Unlikely
Wednesday PM	Unlikely

# Houston Pilots Visibility Chart (miles)



## Forecast Confidence



Time	Fri 12am	Fri 1am	Fri 2am	Fri 3am	Fri 4am	Fri 5am	Fri 6am	Fri 7am	Fri 8am	Fri 9am	Fri 10am	Fri 11am	Fri 12pm	Fri 1pm	Fri 2pm	Fri 3pm	Fri 4pm	Fri 5pm	Fri 6pm	Fri 7pm	Fri 8pm	Fri 9pm	Fri 10pm	Fri 11pm	Sat 12am	Sat 1am	Sat 2am	Sat 3am	Sat 4am	Sat 5am	Sat 6am	Sat 7am	Sat 8am	Sat 9am	Sat 10am	Sat 11am			
610 Bridge	10	7	6	5	4	0.84	1	0.89	1	2	3	9	10	10	10	8	7	6	6	5	4	3	3	2	2	0.48	0.24	0.24	0.24	0.24	0.48	1	4	8	10	10			
Kinder 1	10	7	6	5	4	0.98	1	1	1	2	3	9	10	10	10	8	7	7	6	5	4	3	3	3	4	2	2	2	2	2	2	2	2	4	8	10	10		
Greens Bayou	10	7	6	5	4	1	1	1	1	2	3	9	10	10	10	9	7	7	7	5	4	3	3	4	5	4	4	4	4	4	4	4	4	5	8	10	10		
Shell Crude	10	7	6	5	4	1	1	1	1	2	3	9	10	10	10	9	7	7	7	5	4	3	3	4	8	8	8	8	8	8	8	8	8	8	8	8	10	10	
Lynchburg Ferries	10	7	6	5	4	1	1	1	1	2	3	9	10	10	10	9	8	7	7	5	4	4	3	4	8	8	8	8	8	8	8	8	8	8	8	8	10	10	
Exxon 3	10	7	6	5	4	1	1	1	1	2	3	9	10	10	10	9	7	7	7	5	4	3	3	4	8	8	8	8	8	8	8	8	8	8	8	8	10	10	
Morgans Point	10	7	6	5	4	0.93	1	1	0.81	1	3	9	10	10	10	9	7	7	7	5	4	3	3	4	8	8	8	8	8	8	8	8	8	8	8	8	10	10	
75/76	10	7	6	5	4	0.77	0.91	0.53	0.29	1	3	9	10	10	9	7	6	7	7	5	4	3	2	3	8	8	8	8	8	8	8	8	8	8	8	8	8	10	10
63/64	10	7	5	3	0.57	0.57	0.53	0.29	0.29	1	2	6	10	10	9	7	6	6	6	5	4	3	2	2	8	8	8	8	8	8	8	8	8	8	8	8	10	10	
51/52	9	6	2	1	1	0.9	0.29	0.29	0.29	1	3	7	9	7	7	6	5	5	4	4	3	3	2	2	6	8	8	7	8	7	8	8	8	8	8	10	10		
37/38	9	6	2	2	1	1	0.29	0.29	0.29	0.29	3	5	8	5	4	4	4	4	3	2	2	1	1	1	4	7	7	6	6	6	6	8	8	8	8	8	10	10	
25/26	9	4	2	2	2	1	0.48	0.29	0.29	0.29	2	4	7	2	1	1	1	1	1	1	1	1	1	0.72	1	3	8	6	6	6	5	7	8	8	8	10	10		
11/12	9	4	2	2	2	1	0.53	0.29	0.29	0.29	2	5	9	4	2	1	1	1	1	1	1	1	1	0.9	0.84	1	6	6	5	6	4	5	8	8	8	8	10	10	
1 & 2 Bravo	9	3	2	2	1	0.29	0.53	0.29	0.29	0.29	2	4	7	3	3	2	0.89	0.89	0.99	0.89	0.89	0.89	0.58	0.58	0.44	4	6	2	4	6	4	8	8	8	8	9			

**NOTE: This is automated data that may/may not agree with the official BAM thinking that's found on the daily slides or special visibility report slides. This data should be used as a guide only**

# Houston Pilots Wind Chart



## Forecast Confidence



## Example

Sustained wind 13 Knots  
Gusts 18 Knots  
Wind from the N

WS: 13  
G:18  
N

Time Knots	Fri 12am	Fri 1am	Fri 2am	Fri 3am	Fri 4am	Fri 5am	Fri 6am	Fri 7am	Fri 8am	Fri 9am	Fri 10am	Fri 11am	Fri 12pm	Fri 1pm	Fri 2pm	Fri 3pm	Fri 4pm	Fri 5pm	Fri 6pm	Fri 7pm	Fri 8pm	Fri 9pm	Fri 10pm	Fri 11pm	Sat 12am	Sat 1am	Sat 2am	Sat 3am	Sat 4am	Sat 5am	Sat 6am	Sat 7am	Sat 8am	Sat 9am	Sat 10am	Sat 11am	
610 Bridge	3	2	2	2	2	2	3	3	4	5	5	6	6	6	6	6	5	5	4	3	3	3	3	3	4	4	4	4	5	6	7	8	9	10	10	11	11
	4	3	3	4	4	4	4	5	5	7	7	9	10	9	9	9	8	7	6	5	5	4	5	5	7	6	7	8	9	11	13	15	15	16	17	17	
Kinder 1	3	2	2	2	2	2	3	3	4	5	5	6	6	6	6	6	5	5	4	3	3	3	3	3	4	4	4	5	6	7	8	9	10	10	11	11	
	4	3	3	4	4	4	4	5	5	7	7	9	9	9	9	9	8	7	6	5	5	4	5	5	7	6	7	8	9	11	13	15	15	16	17	17	
Greens Bayou	3	2	2	2	2	2	3	3	4	5	5	6	6	6	6	6	5	5	4	4	3	3	3	3	4	4	4	5	6	7	8	9	10	10	11	11	
	4	4	3	4	4	4	4	5	5	7	7	9	9	8	9	9	8	7	6	6	5	4	5	5	7	6	7	8	9	11	12	14	15	15	16	16	
Shell Crude	3	2	2	2	2	2	3	3	4	5	5	6	6	6	6	6	5	5	4	4	3	3	3	3	4	4	4	5	6	7	8	9	10	10	11	11	
	5	3	3	4	4	4	4	5	5	7	7	9	9	8	9	9	8	7	6	6	5	4	5	5	7	6	7	8	9	11	12	14	15	15	16	16	
Lynchburg Ferries	3	2	2	3	3	3	3	3	4	5	6	6	6	6	6	6	5	5	4	4	3	3	3	3	4	5	6	7	8	9	10	10	11	11	11		
	5	4	4	4	4	4	5	5	6	7	8	9	9	8	9	9	8	7	6	6	5	4	5	5	7	6	7	8	9	11	12	14	15	15	16	16	
Exxon 3	3	3	3	3	3	3	3	4	4	5	6	6	6	6	6	6	5	5	4	4	3	3	3	3	4	4	5	6	7	8	9	10	10	11	11	11	
	5	4	4	4	4	4	5	5	6	7	8	9	9	9	9	9	8	8	6	5	5	5	5	6	7	6	7	8	9	11	13	14	14	14	15	16	
Morgans Point	3	3	3	3	3	3	4	4	5	6	6	6	6	6	6	6	6	5	4	4	4	4	4	5	6	6	7	7	8	9	10	11	11	11	11	12	12
	5	4	4	4	4	4	5	5	6	7	8	9	9	9	9	9	8	7	6	5	5	5	6	7	7	8	10	12	13	14	15	15	16	16	16	16	
75/76	3	4	4	3	4	4	5	5	6	7	7	6	6	7	7	7	7	6	5	5	5	5	5	6	7	6	7	8	9	10	11	12	13	13	13	13	
	4	4	4	4	4	4	5	5	6	7	8	9	9	10	10	10	9	8	7	6	5	5	5	6	6	7	6	7	8	9	10	12	13	14	15	16	16
63/64	3	3	3	3	3	3	4	4	5	6	7	7	7	7	7	7	7	6	5	5	4	4	4	5	5	6	6	7	7	8	9	10	11	12	13	13	13
	4	4	4	4	4	4	5	6	7	8	9	9	10	10	10	10	9	8	7	6	5	5	5	6	6	7	6	7	8	9	10	12	13	14	14	15	15
51/52	3	3	3	3	3	3	4	5	6	7	7	7	7	7	7	7	6	4	4	4	4	4	5	7	6	6	8	8	10	11	12	12	13	13	13	13	
	4	4	3	4	4	4	4	6	7	8	9	9	10	9	9	9	9	7	5	5	4	5	6	8	7	9	10	11	12	13	14	13	14	14	14	14	
37/38	3	3	3	3	3	3	4	5	6	7	7	7	7	7	7	7	6	5	4	4	3	4	4	6	6	6	8	8	9	10	11	12	12	12	12	13	
	3	3	3	4	4	4	4	6	7	8	9	9	10	9	9	9	8	7	5	5	4	5	5	7	7	6	8	9	10	12	13	14	15	15	15	15	
25/26	3	3	3	3	3	4	4	5	6	7	8	8	8	8	7	7	7	6	5	4	4	3	3	4	6	6	5	7	7	8	9	9	10	11	11	11	12
	3	3	4	4	5	5	5	6	7	9	9	9	10	9	9	9	9	7	6	5	4	5	5	7	7	6	8	9	10	12	13	14	14	14	14	14	
11/12	3	3	3	4	4	4	5	6	7	8	8	8	8	8	7	7	7	6	5	4	3	4	5	6	7	6	7	8	8	9	10	10	11	11	11	11	
	3	4	4	5	5	5	6	6	8	9	10	10	11	10	10	10	9	8	8	7	6	5	5	6	7	8	7	8	10	11	12	13	14	14	14	14	
1 & 2 Bravo	3	4	5	5	5	6	7	7	8	9	9	9	9	8	8	8	8	8	8	7	6	5	5	6	8	9	8	9	10	11	12	12	12	13	13	13	
	4	5	6	6	6	7	7	8	9	10	11	11	11	11	11	11	10	10	9	9	8	7	6	6	7	8	10	9	10	11	12	13	14	14	15	15	
	NE	ENE	ENE	ENE	ENE	ENE	ENE	ENE	ENE	ENE	ENE	ENE	ENE	ENE	ENE	ENE	ENE	ENE	ENE	ENE	E	E	ESE	NW	WNW	WNW	NW	WNW	WNW	WNW	NW	NW	NW	NW	NW	NW	

NOTE: This is automated data that may/may not agree with the official BAM thinking that's found on the daily slides or special visibility report slides. This data should be used as a guide only

# Houston Pilots: Fri. 01/26/2024



## Forecast Discussion

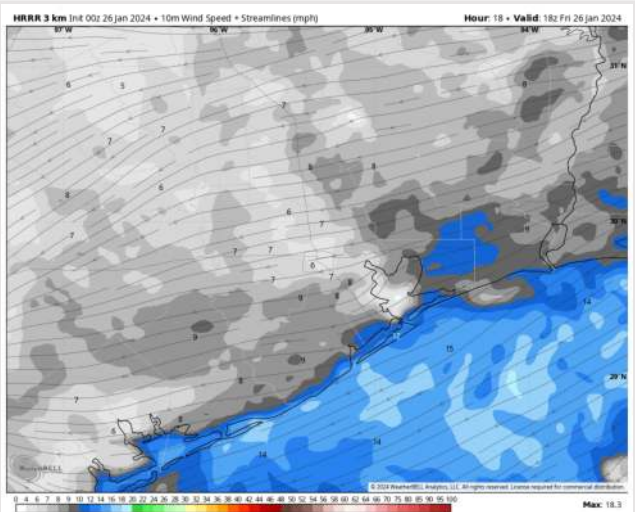
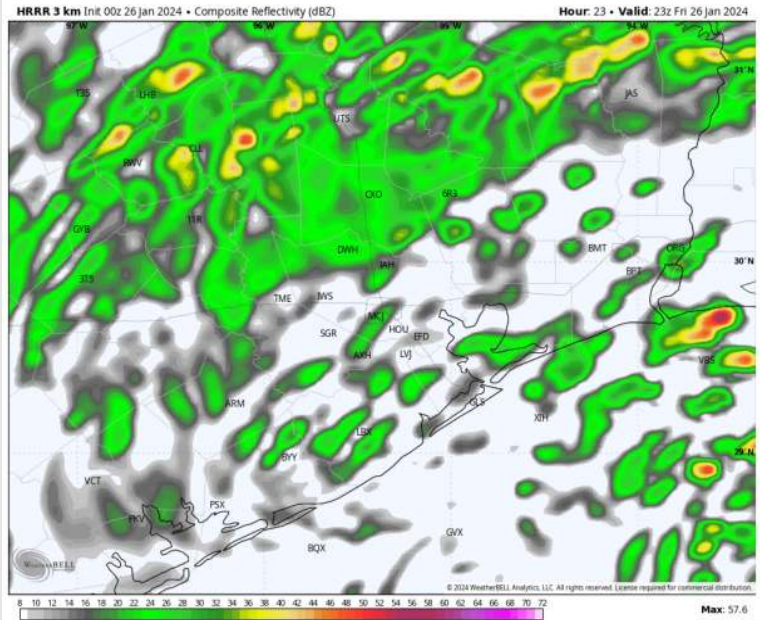
**Precip:** Favoring 11 AM – 11PM to be the best potential for light showers (30%-40%) to work into the area, impacting all stations. Not favoring additional thunderstorm risks at this time.

**Wind:** Winds will start out of the ENE shift out of the NW by 10PM with the passing of the front. **N of Morgan's Point:** 4-9 kts favored for the entire day. **S of Morgan's Point:** 8 - 12 kts sustained for the entire day.

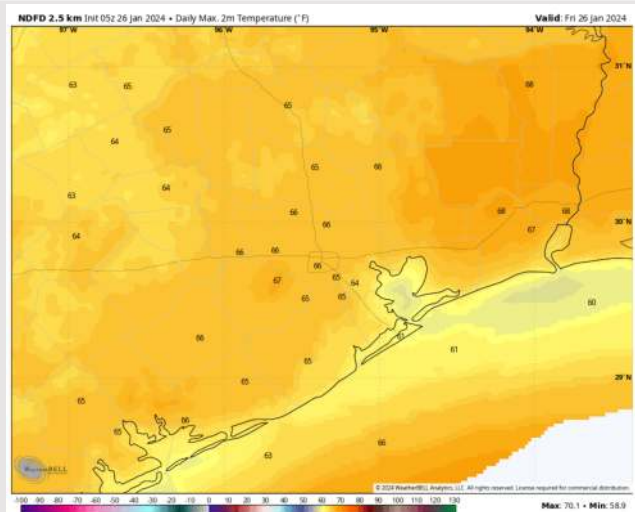
**High Temps:** **N of Morgan's Point:** Upper 60s F / **Near 70 S of Morgan's Point:** Lower 60s F to upper 50s F.

**Visibility:** Confidence on exact timing remains low, but sea fog for Friday AM remains a risk. Patchy to widespread fog remains possible for the late evening but will be highly dependent on weak front passage. **Check the Visibility slides above for more details.**

## Precip Image: 5 PM CT



Wind Speed:  
12 PM CT



High Temps  
Today

# Houston Pilots: Sat. 01/27/2024



## Forecast Discussion

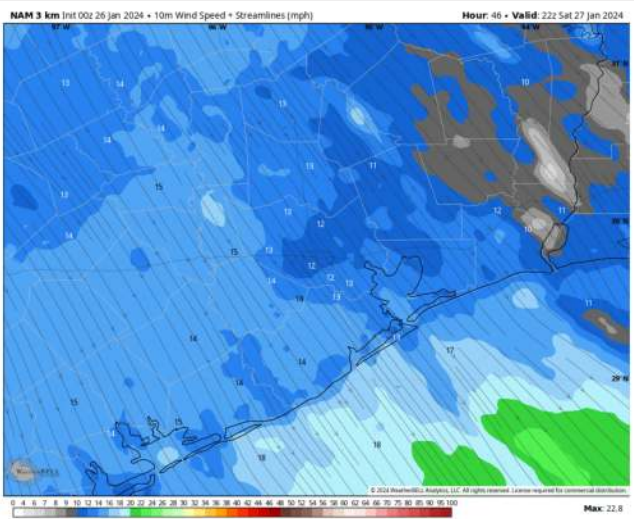
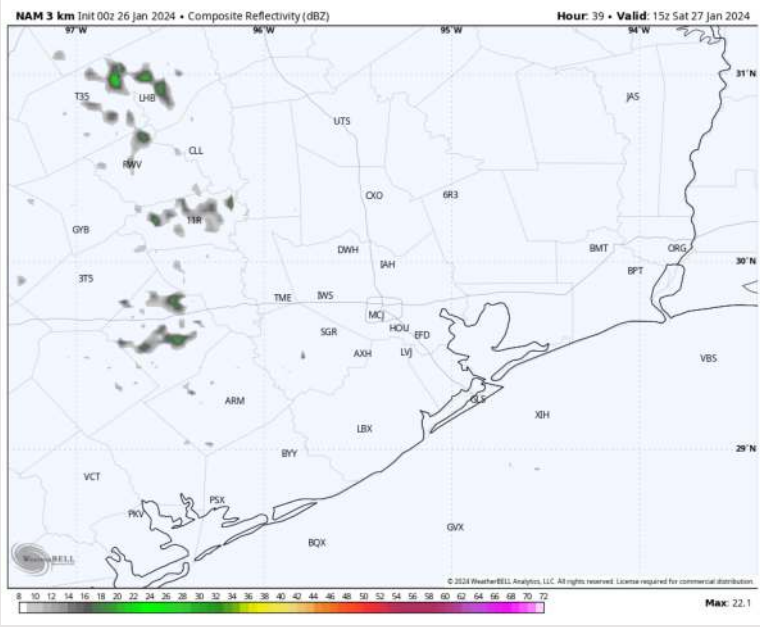
**Precip:** Isolated light showers will be possible for stations N of Morgan's Point through 12 PM. Favoring dry conditions for the remainder of the day.

**Wind:** Winds will be out of the NW for the entire day. **N Morgan's Point:** Winds will be 6 – 9 kts through 7AM, before becoming 9 – 13 kts for the remainder of the day. **S of Morgan's Point:** Winds will start at 6 – 9 kts through 7AM, before becoming 11 – 16kts for the remainder of the day. A few gusts of up to 20 kts can't be ruled out.

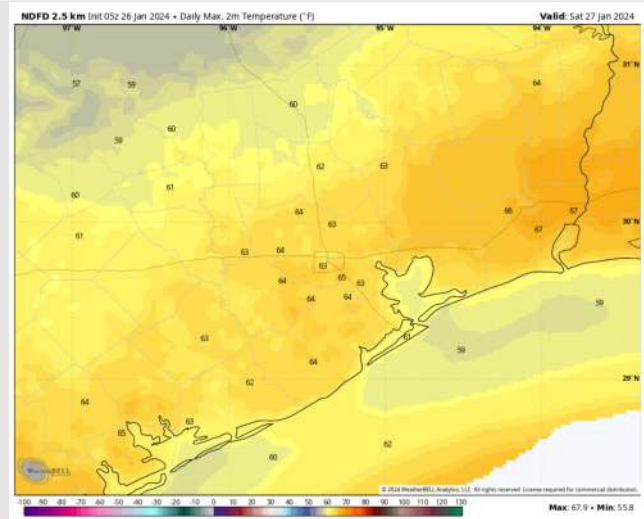
**High Temps:** **N of Morgan's Point:** Mid 60s F. **S of Morgan's Point:** Upper 50s F

**Visibility:** Lower confidence exists on how far into SAT AM the FRI PM fog risks can continue, but the potential for more fog for Stations N of Morgan's Point remains.

## Precip Image: 9 AM CT



Wind Speed:  
4 PM CT



High Temps  
Saturday



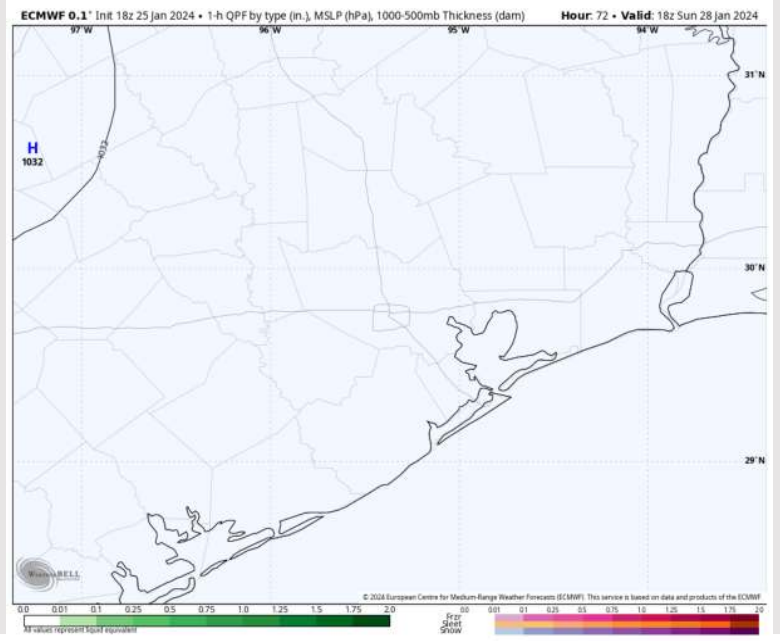
# Houston Pilots: Sun. 01/28/2024



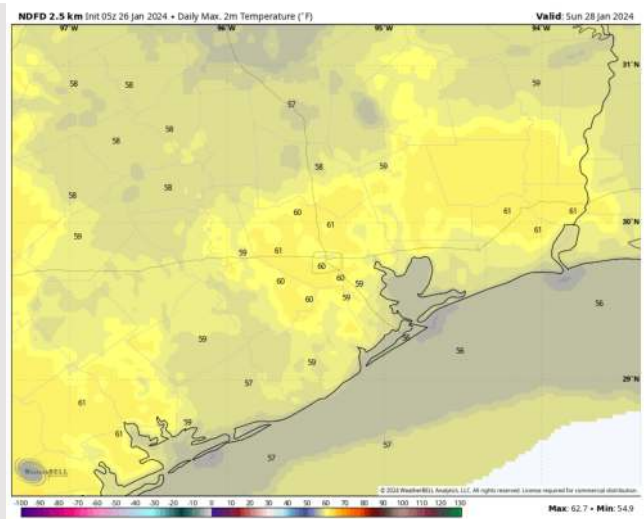
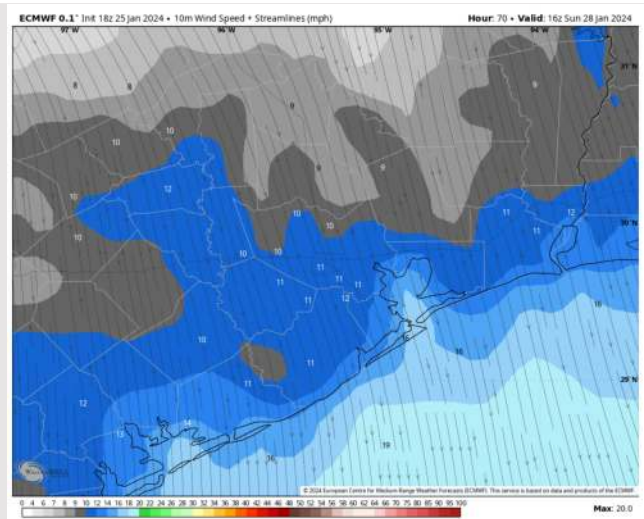
## Forecast Discussion

- Precip:** Favoring dry conditions throughout the day Sunday.
- Wind:** Winds out of the NW throughout the day. **N Morgan's Point:** Winds at 4-9 kts throughout the day Sunday. **S of Morgan's Point:** Winds at 8-13 kts through the AM will then decrease to 5-10 kts by 4 PM. A few gusts of up to 20 kts cannot be ruled out at the Boarding Station through 6 PM.
- High Temps:** **N of Morgan's Point:** Upper 50s-Near 60 F. **S of Morgan's Point:** Mid 50s F.
- Visibility:** No visibility concerns favored for Sunday.

## Precip Image: 12 PM CT



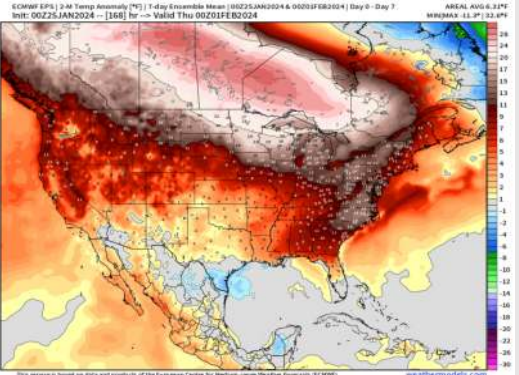
Wind Speeds:  
10 AM CT



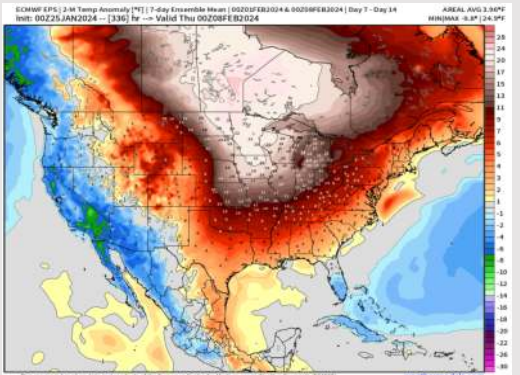
High Temps  
Sunday

# Houston Pilots: 1/26/24

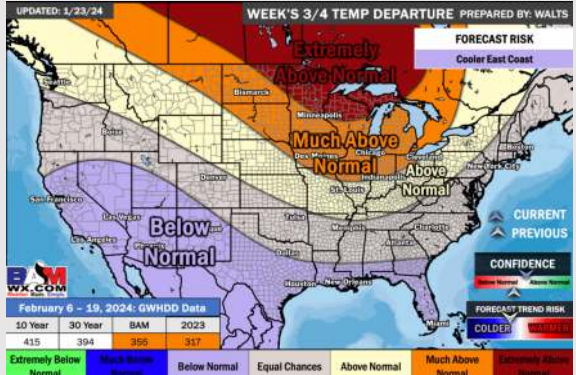
**Next 7 Day Temperature Departure**



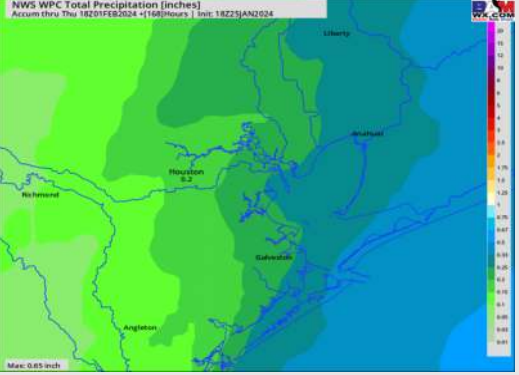
**8-14 Day Temperature Departure**



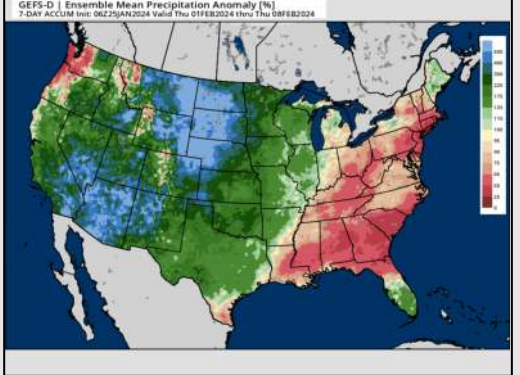
**15-30 Day Temperature Departure**



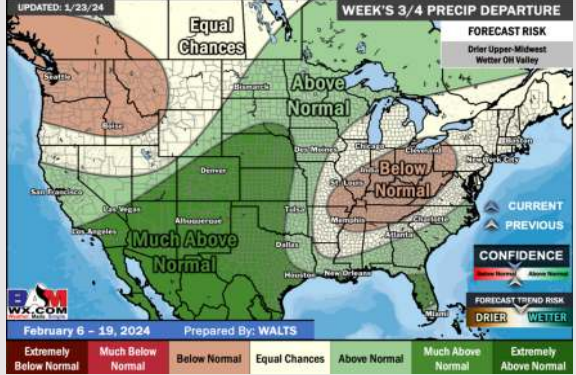
**Next 7 Day Total Precipitation**



**8-14 Day % of Average Precip.**



**15-30 Day % of Average Precip.**



- A few rain opportunities will work through Friday and Saturday. Slightly above normal to near normal temperatures favored for the week ahead.
- Near normal precipitation chances are at play during the week 2 timeframe. Temps expected to be above normal.
- Below normal temperatures and much above normal chances for precipitation are favored in the weeks ¾ timeframe.