

Houston Pilots Forecast Package



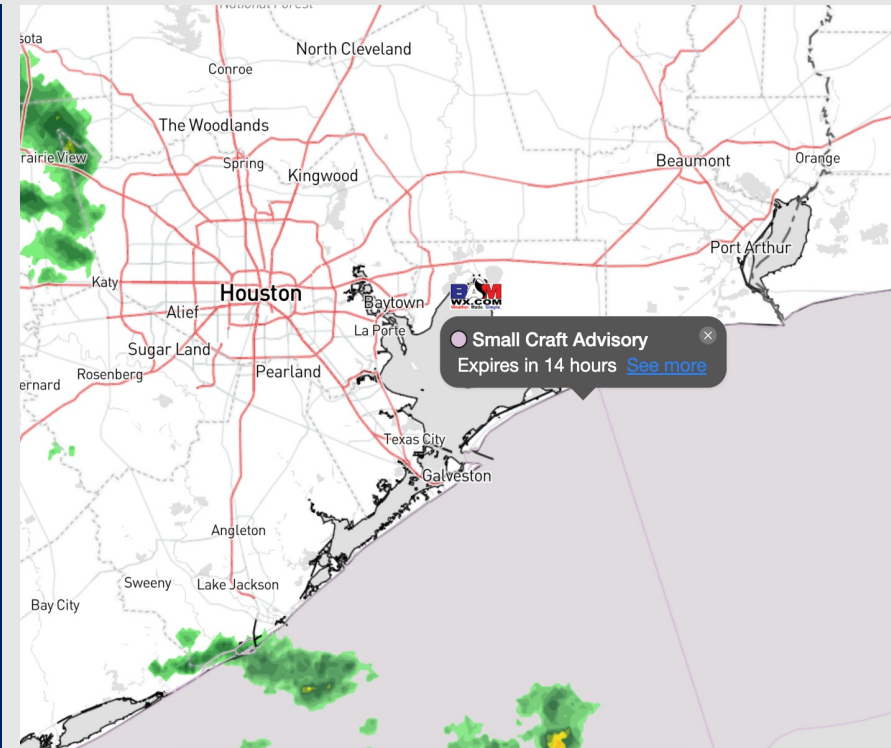
Updated: 3:45 PM CT

Tuesday, January 2, 2024

Forecaster: Will Danby

Weather Headlines

- Winds will be on the increase late this afternoon with the arrival of a cold front from ~11 PM - 4 AM. Winds can become elevated at the Boarding Station during this time.
- Fog does not look to be a concern in the forecast outside of a low-end risk to watch Thursday AM
- Outside of rain exiting early WED, the next round of rain showers will enter early FRI AM.



Radar/NWS Alerts: 3:40 PM CT



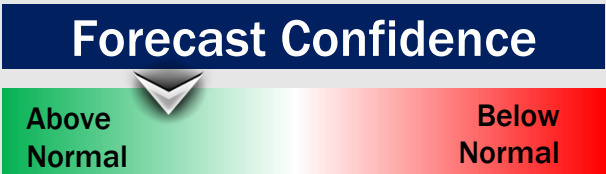
As always, please do not hesitate to reach out to us with any forecast questions via the chat option on the Weather Porthole or our on-call number, **(317)-560-8122** press 1 for forecast questions.

Houston Pilots Extended Range Visibility Report



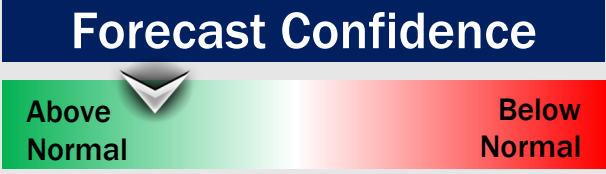
Friday 1/5/24

No visibility concerns for Friday. Rain Showers/downpours can cause visibility to drop ~2 mi.



Saturday 1/6/24

No visibility concerns for Saturday.



Sunday 1/7/24

No visibility concerns for Sunday.



Chance for Fog

Friday AM	Unlikely
Friday PM	Unlikely
Saturday AM	Unlikely
Saturday PM	Unlikely
Sunday AM	Unlikely
Sunday PM	Unlikely

Houston Pilots Wind Chart



Forecast Confidence



Example

Sustained wind 13 Knots
Gusts 18 Knots
Wind from the N

WS: 13
G:18
N

Time Knots	Tue 4am	Tue 5am	Tue 6am	Tue 7am	Tue 8am	Tue 9am	Tue 10am	Tue 11am	Tue 12pm	Tue 1pm	Tue 2pm	Tue 3pm	Tue 4pm	Tue 5pm	Tue 6pm	Tue 7pm	Tue 8pm	Tue 9pm	Tue 10pm	Tue 11pm	Wed 12am	Wed 1am	Wed 2am	Wed 3am	Wed 4am	Wed 5am	Wed 6am	Wed 7am	Wed 8am	Wed 9am	Wed 10am	Wed 11am	Wed 12pm	Wed 1pm	Wed 2pm	Wed 3pm			
610 Bridge	4 11 NE	4 11 ENE	4 12 ENE	4 14 ENE	5 13 ENE	6 13 ENE	6 10 ENE	5 9 ENE	5 8 E	6 10 E	6 12 E	6 13 ESE	6 15 ESE	9 14 E	9 15 E	10 15 ENE	9 14 NE	9 14 NNE	9 13 NNE	10 15 NNE	12 18 NNE	10 15 NNE	9 14 NNE	8 12 N	8 12 N	8 12 N	8 12 N	8 13 N	9 13 N	8 12 N	8 11 N	8 11 N	8 11 N	7 11 NNE	7 11 NNE				
Kinder 1	4 11 NE	4 11 ENE	5 11 ENE	4 13 ENE	4 13 ENE	6 16 ENE	5 12 ENE	5 10 ENE	5 8 E	5 9 ENE	6 12 E	5 13 ESE	5 15 ESE	9 14 E	9 15 E	10 14 ENE	9 14 NE	9 13 NNE	9 14 NNE	10 15 NNE	11 17 NNE	10 15 NNE	9 14 NNE	8 12 N	8 12 N	8 12 N	8 12 N	8 13 N	9 13 N	8 12 N	8 11 N	8 11 N	8 11 N	8 11 N	7 11 ENE				
Greens Bayou	4 10 NE	4 11 ENE	5 12 ENE	4 11 ENE	4 13 ENE	6 12 ENE	6 11 ENE	6 10 ENE	5 8 E	5 8 E	6 10 E	5 11 ESE	5 13 ESE	4 14 E	9 14 E	9 15 ENE	10 14 NE	9 13 NNE	9 10 NNE	10 16 NNE	11 17 NNE	10 16 NNE	11 14 NNE	8 12 N	8 12 N	8 12 N	7 11 N	8 12 N	8 13 N	9 12 N	9 11 N	9 11 N	9 11 N	8 11 N	8 11 SSE				
Shell Crude	4 10 NE	4 11 ENE	5 12 ENE	4 11 ENE	4 12 ENE	5 12 ENE	6 11 ENE	6 11 ENE	5 8 E	5 8 E	6 10 E	5 11 ESE	4 13 ESE	4 14 E	9 15 E	10 16 ENE	9 14 NE	9 13 NNE	10 14 NNE	11 16 NNE	11 16 NNE	11 14 NNE	9 12 NNE	8 12 NNE	8 12 N	8 12 N	8 12 N	9 13 N	9 12 N	9 12 N	9 12 N	9 11 N	9 11 N	8 11 N	8 11 WNW				
Lynchburg Ferries	3 10 NE	4 10 ENE	4 12 ENE	4 11 ENE	4 12 ENE	5 12 ENE	6 11 ENE	6 11 ENE	5 7 E	4 8 E	5 9 E	5 11 E	4 12 ESE	4 12 SE	9 13 E	10 15 E	11 16 ENE	10 14 NE	10 13 NNE	10 15 NNE	11 16 NNE	11 16 NNE	11 16 NNE	10 14 NNE	9 13 NNE	8 12 N	8 12 N	8 12 N	9 12 N	9 12 N	9 12 N	9 12 N	9 12 N	9 11 N	8 11 NW				
Exxon 3	3 11 NE	4 11 ENE	5 13 ENE	4 12 ENE	4 13 ENE	6 13 ENE	6 11 ENE	6 9 ENE	5 7 E	5 7 E	5 10 E	5 11 E	4 12 ESE	5 13 ESE	10 15 E	11 16 ENE	10 14 NE	10 13 NNE	11 15 NNE	12 16 NNE	12 16 NNE	12 16 NNE	10 14 NNE	9 13 NNE	9 12 N	9 12 N	9 12 N	9 12 N	9 12 N	9 12 N	9 12 N	9 11 N	9 11 N	9 11 N	9 11 NW				
Morgans Point	6 13 NE	6 13 ENE	7 15 ENE	7 13 ENE	7 13 ENE	7 13 ENE	7 11 ENE	7 12 ENE	6 9 E	6 10 E	6 11 E	6 11 E	6 13 ESE	8 15 ESE	12 16 E	13 16 E	12 15 ENE	11 14 NE	11 15 NNE	12 17 NNE	13 17 NNE	13 17 NNE	12 16 NNE	12 16 NNE	11 14 NNE	10 13 NNE	10 13 N	10 13 N	10 13 N	10 13 N	10 13 N	9 12 N	9 12 N	9 12 N	9 12 NW				
75/76	12 14 ENE	12 14 ENE	13 16 ENE	13 15 ENE	11 14 ENE	11 12 ENE	10 12 ENE	8 11 ENE	8 10 ENE	8 11 ENE	7 12 ENE	8 12 ESE	10 15 ESE	15 18 E	16 18 E	16 18 ENE	14 16 ENE	14 16 NNE	16 18 NNE	17 19 NNE	17 20 NNE	17 20 NNE	16 18 NNE	16 18 NNE	14 16 NNE	14 16 NNE	15 16 NNE	15 16 NNE	14 15 NNE	14 15 NNE	14 15 NNE	14 15 NNE	14 15 NNE	13 14 NNE	13 14 SSE				
63/64	13 16 ENE	13 16 ENE	14 17 ENE	13 16 ENE	12 14 ENE	11 13 ENE	11 12 ENE	11 10 ENE	7 9 ENE	8 10 ENE	9 11 ENE	10 12 E	12 13 E	16 17 E	17 18 E	16 17 ENE	16 17 ENE	17 19 ENE	18 20 ENE	19 21 ENE	20 22 ENE	20 22 ENE	20 22 ENE	18 20 ENE	17 19 ENE	16 18 ENE	16 18 ENE	15 17 ENE	15 16 ENE	15 16 ENE	15 16 ENE	14 15 ENE	14 15 ENE	14 15 ENE	14 15 ENE	13 14 ENE			
51/52	13 15 ENE	12 15 ENE	13 16 ENE	13 16 ENE	12 14 ENE	11 13 ENE	11 12 ENE	10 11 ENE	8 9 ENE	7 10 ENE	7 11 ENE	12 14 E	16 19 E	16 19 E	17 19 E	16 18 ENE	15 17 ENE	15 17 NNE	18 20 NNE	18 20 NNE	20 22 NNE	20 22 NNE	20 22 NNE	18 20 NNE	18 20 NNE	16 18 NNE	16 18 NNE	15 17 NNE	15 16 NNE	15 16 NNE	15 16 NNE	14 15 NNE	14 15 NNE	14 15 NNE	14 15 ENE	14 15 W			
37/38	12 14 NE	12 14 ENE	13 15 ENE	12 14 ENE	11 14 ENE	12 14 ENE	12 13 ENE	10 12 ENE	9 11 ENE	8 11 ENE	11 13 ENE	12 14 E	12 15 E	16 18 E	16 18 E	16 18 ENE	15 17 ENE	15 17 NNE	18 20 NNE	18 20 NNE	20 22 NNE	20 22 NNE	20 22 NNE	18 20 NNE	18 20 NNE	17 19 NNE	17 19 NNE	16 18 NNE	16 18 NNE	15 17 NNE	15 16 NNE	15 16 NNE	15 16 NNE	14 15 NNE	14 15 SSE	14 15 N			
25/26	11 14 NE	11 14 ENE	11 15 ENE	11 14 ENE	11 14 ENE	12 14 ENE	12 13 ENE	11 12 ENE	10 11 ENE	10 12 ENE	12 14 ENE	12 15 E	16 18 E	16 18 E	16 18 ENE	15 17 ENE	15 17 NNE	18 20 NNE	18 20 NNE	20 22 NNE	20 22 NNE	20 22 NNE	18 20 NNE	18 20 NNE	16 18 NNE	16 18 NNE	15 17 NNE	15 16 NNE	15 16 NNE	15 16 NNE	14 15 NNE	14 15 NNE	14 15 NNE	14 15 NNE	14 15 NNE	13 14 NNE	13 14 SSW		
11/12	14 15 NE	14 15 ENE	15 16 ENE	15 16 ENE	14 16 ENE	15 16 ENE	15 14 ENE	15 14 ENE	14 15 ENE	14 15 ENE	15 16 ENE	15 16 E	17 19 E	18 18 E	18 18 ENE	16 18 ENE	15 17 ENE	15 17 NNE	18 20 NNE	18 21 NNE	20 22 NNE	20 22 NNE	20 22 NNE	18 20 NNE	18 20 NNE	17 19 NNE	17 19 NNE	16 18 NNE	16 18 NNE	16 18 NNE	16 18 NNE	15 17 NNE	15 17 NNE	15 17 NNE	14 16 NNE	14 16 NNE			
1 & 2 Bravo	15 ENE	14 ENE	15 ENE	16 E	14 E	16 ENE	16 ENE	16 ENE	15 ENE	14 ENE	14 ENE	15 E	16 E	16 E	20 E	20 E	19 E	18 E	19 E	20 E	20 E	22 E	22 E	22 E	22 E	22 E	18 E	18 E	17 E	17 E	16 E	16 E	16 E	16 E	16 E	14 E	14 E	13 E	12 W

NOTE: This is automated data that may/may not agree with the official BAM thinking that's found on the daily slides or special visibility report slides. This data should be used as a guide only

Forecast Discussion

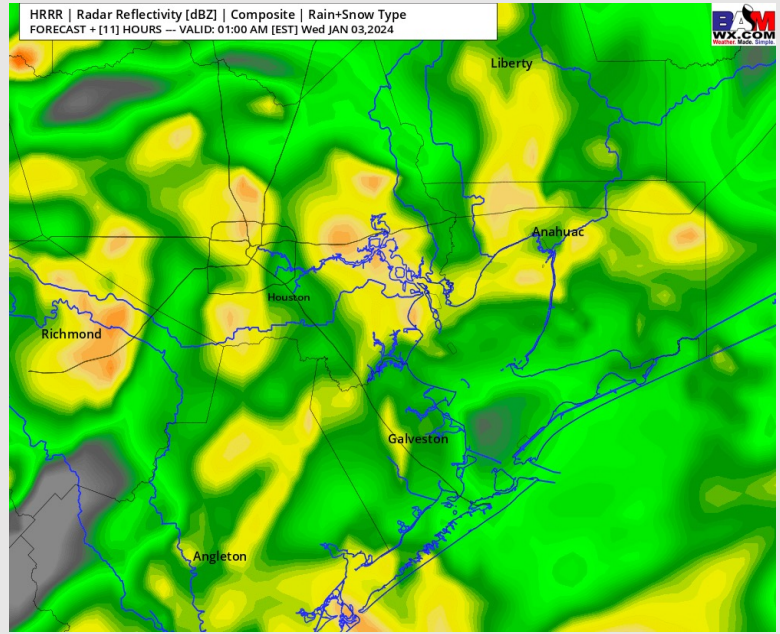
Precip: Favoring light drizzle to reach all stations near 6 PM. Better timing for rain to enter will be near 10 PM and lasting through 4 AM. Coverage then tapers off by 6 AM.

Wind: Easterly winds continue this afternoon. Towards 10 PM winds will begin to veer from the NE ahead of the cold front. **N of Morgan's Point:** 5 -10 kts prior to 10 PM increasing to 7 - 12 kts at 10 PM with the cold front. **S of Morgan's Point:** 8-13 kts before 7 PM, increasing to 12-17 kts at that time. 15-20 kts winds at the Boarding Station. Watch for winds to slightly increase to 18 - 23 kts near 8 PM. **Wind gusts of up to 24 kts will be possible across all stations starting towards 7 PM ahead of the front. Towards 11 PM Gusts increase to 24 - 27 kts.**

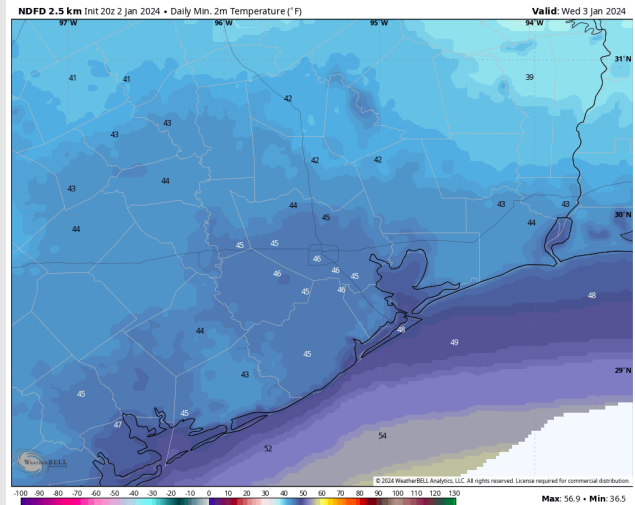
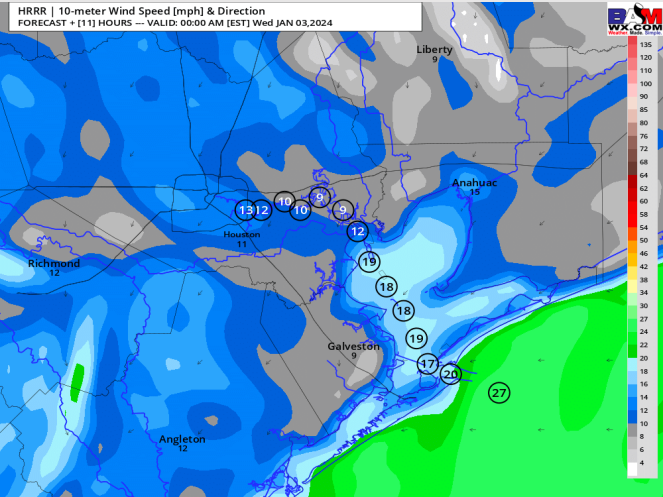
Low Temps: **N of Morgan's Point:** Mid 40s F **S of Morgan's Point:** Mid to upper 40s F. Upper 40s F at the Boarding Station.

Visibility: No visibility concerns for Tuesday. Downpours can cause visibility to drop to ~2 miles at times in the early AM Wednesday.

Precip Image: 12 AM CT



**Wind Speed:
11 PM CT**



**Low Temps
WED AM**

Forecast Discussion

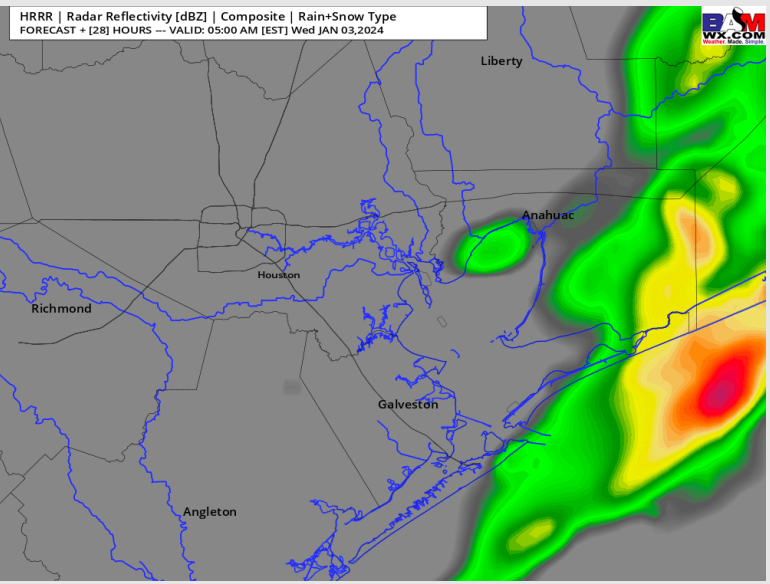
Precip: Scattered showers continue through 4 AM. From roughly 4 - 6 AM coverage tapers off to drizzle, with dry conditions thereafter.

Wind: Frontal passage itself occurs from 10 PM through 5 AM from west to east across the Bay. Behind the front by 7 AM features Northerly winds. **N Morgan's Point:** 7-12 kt winds will calm to 5-10 kts by 6 AM. Towards sunset winds calm more to 3-7 kts. **S of Morgan's Point:** Stronger trends in winds with the front noted compared to AM update. From 12 AM - 5 AM, 14 - 19 kts. Winds then calm to 11 - 16 kts by 10 AM and finally 9 - 14 kts post 10 AM. Winds at the Boarding Station from 12 - 5 AM can see 23 - 28 kts. After 5 AM through 12 PM winds decline slowly to the 9 - 14 kt range. Gusts to 28 - 32 kts possible at the Boarding Station from 12 - 5 AM. North of the Boarding Station can see up to 21 - 23 kts.

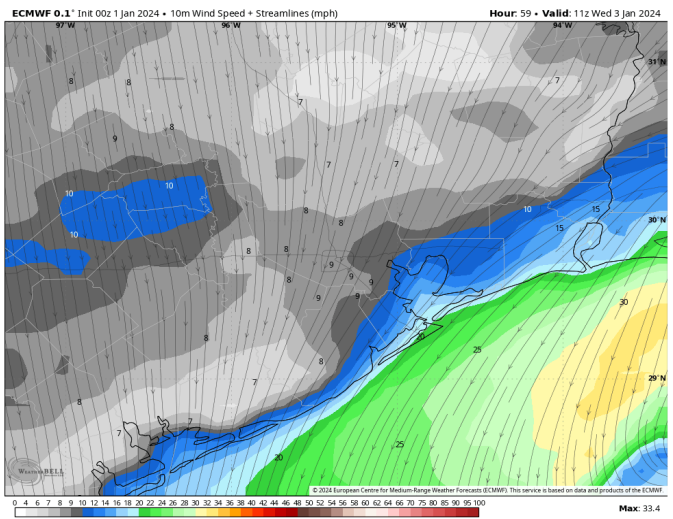
High Temps: N of Morgan's Point: Mid 50s F. S of Morgan's Point: Mid 50s F

Visibility: Not anticipating any fog concerns. Downpours can reduce visibilities to ~2 miles.

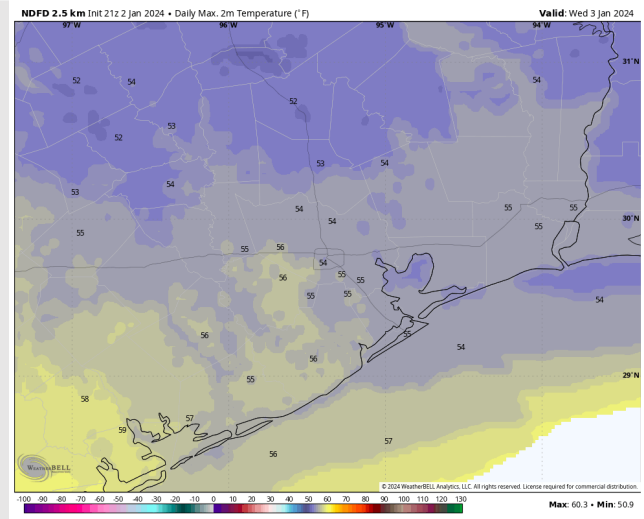
Precip Image: 4 AM CT



Wind Speed:
5 AM CT



High Temps
Wednesday



Forecast Discussion

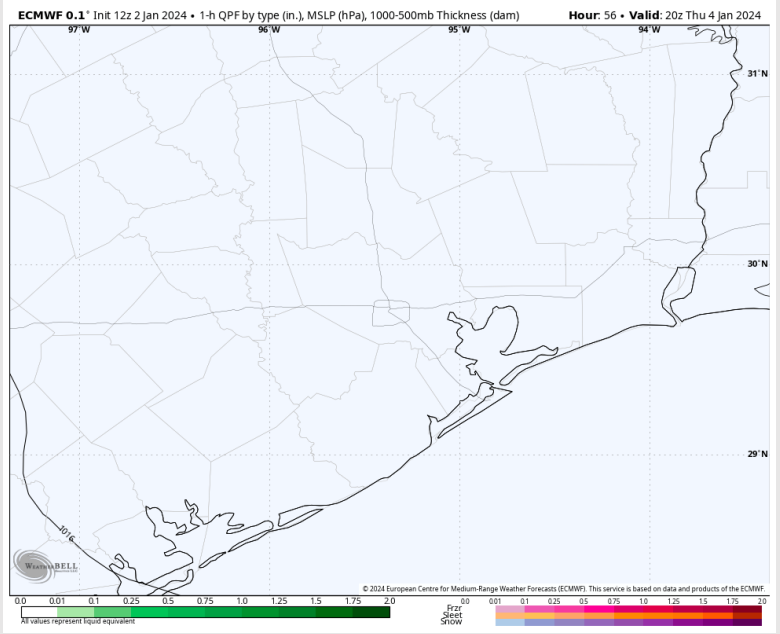
Precip: Dry Conditions are favored for Thursday.

Wind: Winds will rotate ~110 degrees clockwise from the N to ESE. Winds would be from the E by 12 PM and ESE by 4 PM. **N Morgan's Point:** 3 - 7 kits prior to 12 PM, increasing to 7 - 12 kts thereafter. **S of Morgan's Point:** 4 - 9 kts through 8 AM, increasing to 9 - 14 kts by 2 PM. Winds at the Boarding Station a touch higher at 11 - 16 kts by 2 PM.

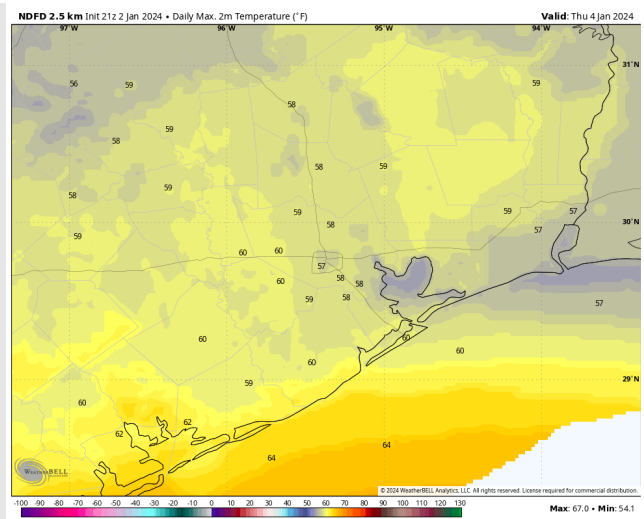
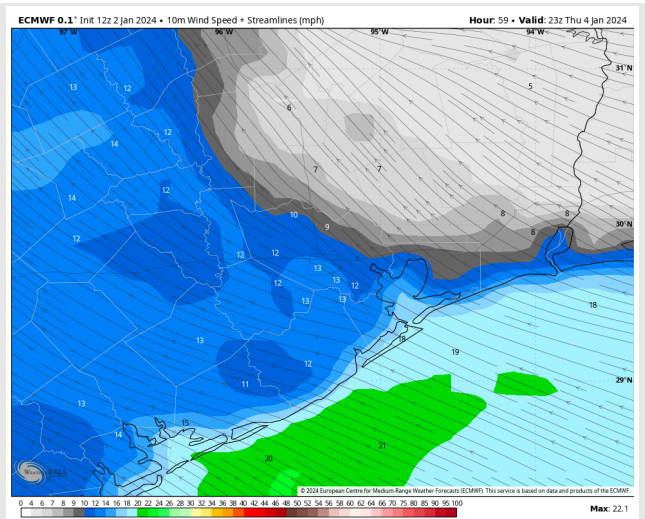
High Temps: **N of Morgan's Point:** Mid to upper 50s F. **S of Morgan's Point:** Mid 50s F. Near 60 F at the Boarding Station.

Visibility: Fog threats have increased marginally from AM update ahead of the next rain shot entering Friday early AM. Confidence remains low, but would be worth monitoring fog development in the AM.

Precip Image: 2 PM CT

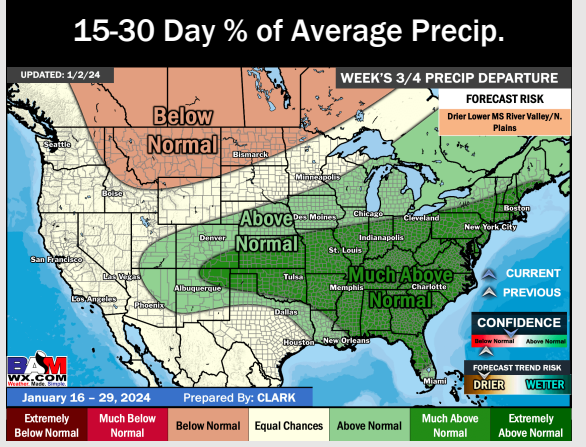
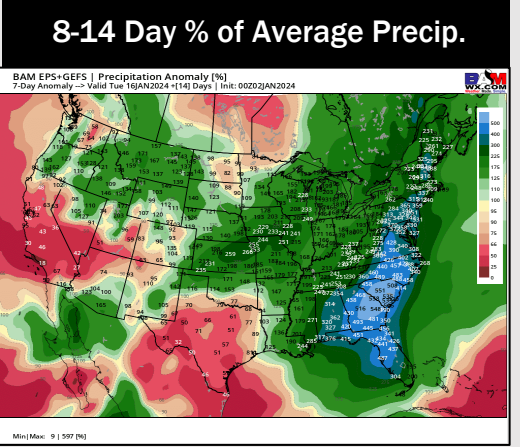
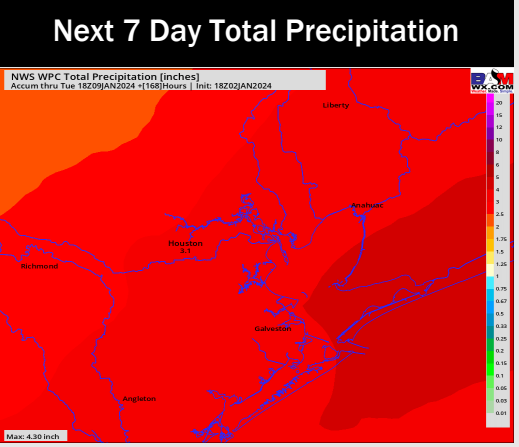
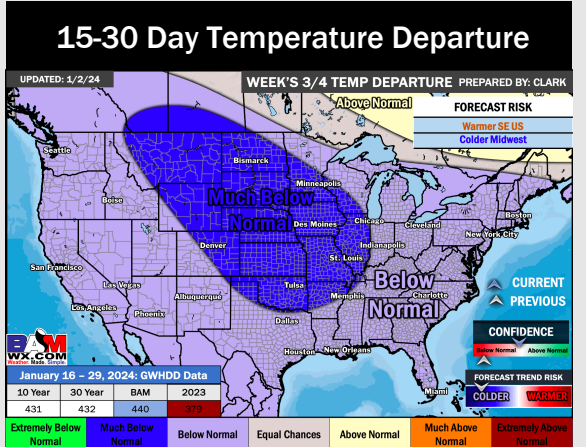
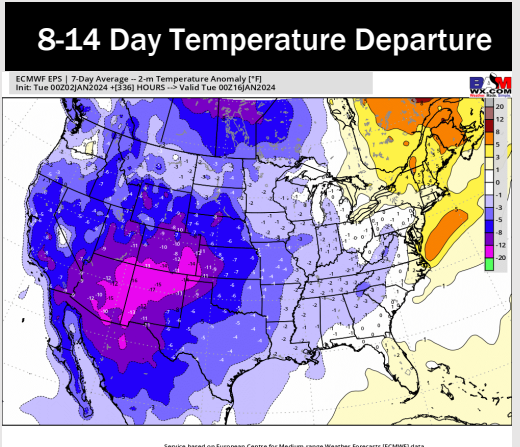
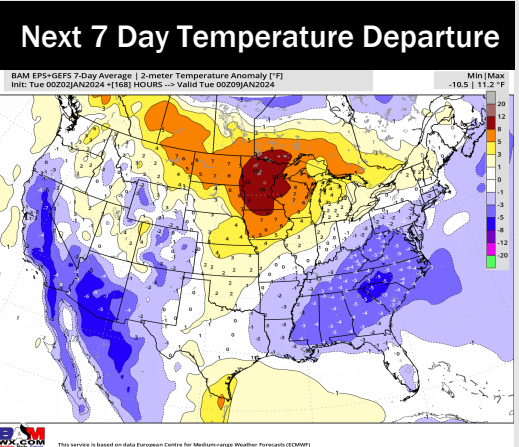


Wind Speed:
5 PM CT



High Temps
Thursday

Houston Pilots: 1/2/24



- With exiting rains WED AM, the next wave of rain showers will enter near early Friday AM. Seasonable temperatures anticipated this week.
- Cooler temperatures and near normal rainfall is favored for the week 2 timeframe wetter risks are valid, however.
- Below normal temperatures and seasonal chances for precipitation are favored in the weeks 3/4 timeframe.