

# Houston Pilots Forecast Package



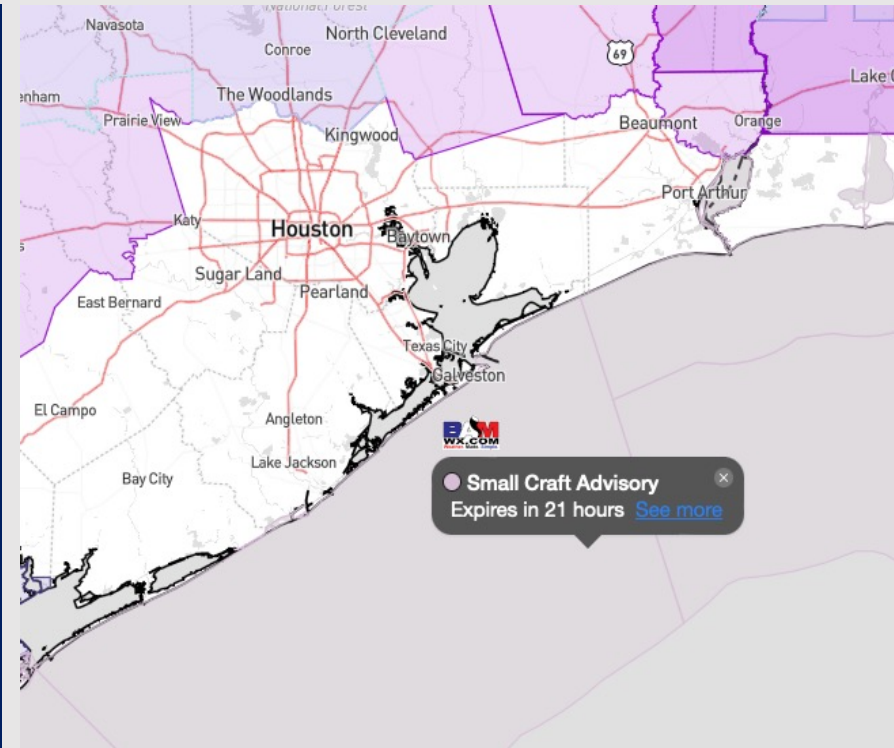
Updated: 3:10 PM CT

Friday, January 19, 2024

Forecaster: Will Danby

## Weather Headlines

- No precip chances are favored for the majority of the weekend, however scattered showers expected to return SUN PM.
- Gusty winds are possible at times, mainly at the Boarding Station this afternoon through tomorrow AM. Winds are slightly elevated on Sunday as well.
- **Next sea fog threat will need to be closely monitored near Monday AM. Sea fog threats look possible TUE/WED as well with numerous shots of showers/thunderstorms.**



Radar/NWS Alerts: 3:08 PM CT



As always, please do not hesitate to reach out to us with any forecast questions via the chat option on the Weather Porthole or our on-call number, **(317)-560-8122** press 1 for forecast questions.

# Houston Pilots Extended Range Visibility Report



## Monday 1/22/24

No visibility concerns for Monday in the AM at least for now, watching for Sea fog development potentially in the early afternoon with oncoming rain chances.



## Wednesday 1/24/24

Monitoring potential for patchy fog to occur in gaps between showers Wednesday AM. Lower confidence at this time.



## Tuesday 1/23/24

Keeping an eye on potential for sea fog during the morning hours. Low confidence on timing exits, but it is likely sea fog will be in the area during the afternoon.



## Chance for Fog

Monday AM	Unlikely
Monday PM	Possible
Tuesday AM	Possible
Tuesday PM	Likely
Wednesday AM	Possible
Wednesday PM	Possible

# Houston Pilots Visibility Chart (miles)



**Forecast Confidence**

Above Normal

▼

Below Normal

Time	Fri 2pm	Fri 3pm	Fri 4pm	Fri 5pm	Fri 6pm	Fri 7pm	Fri 8pm	Fri 9pm	Fri 10pm	Fri 11pm	Sat 12am	Sat 1am	Sat 2am	Sat 3am	Sat 4am	Sat 5am	Sat 6am	Sat 7am	Sat 8am	Sat 9am	Sat 10am	Sat 11am	Sat 12pm	Sat 1pm	Sat 2pm	Sat 3pm	Sat 4pm	Sat 5pm	Sat 6pm	Sat 7pm	Sat 8pm	Sat 9pm	Sat 10pm	Sat 11pm	Sun 12am	Sun 1am	
610 Bridge	10	10	10	10	10	10	10	10	10	10	10	10	10	10	10	10	10	10	10	10	10	10	10	10	10	10	10	10	10	10	10	10	10	10	10	10	10
Kinder 1	10	10	10	10	10	10	10	10	10	10	10	10	10	10	10	10	10	10	10	10	10	10	10	10	10	10	10	10	10	10	10	10	10	10	10	10	10
Greens Bayou	10	10	10	10	10	10	10	10	10	10	10	10	10	10	10	10	10	10	10	10	10	10	10	10	10	10	10	10	10	10	10	10	10	10	10	10	10
Shell Crude	10	10	10	10	10	10	10	10	10	10	10	10	10	10	10	10	10	10	10	10	10	10	10	10	10	10	10	10	10	10	10	10	10	10	10	10	10
Lynchburg Ferries	10	10	10	10	10	10	10	10	10	10	10	10	10	10	10	10	10	10	10	10	10	10	10	10	10	10	10	10	10	10	10	10	10	10	10	10	10
Exxon 3	10	10	10	10	10	10	10	10	10	10	10	10	10	10	10	10	10	10	10	10	10	10	10	10	10	10	10	10	10	10	10	10	10	10	10	10	10
Morgans Point	10	10	10	10	10	10	10	10	10	10	10	10	10	10	10	10	10	10	10	10	10	10	10	10	10	10	10	10	10	10	10	10	10	10	10	10	10
75/76	10	10	10	10	10	10	10	10	10	10	10	10	10	10	10	10	10	10	10	10	10	10	10	10	10	10	10	10	10	10	10	10	10	10	10	10	10
63/64	10	10	10	10	10	10	10	10	10	10	10	10	10	10	10	10	10	10	10	10	10	10	10	10	10	10	10	10	10	10	10	10	10	10	10	10	10
51/52	10	10	10	10	10	10	10	10	10	10	10	10	10	10	10	10	10	10	10	10	10	10	10	10	10	10	10	10	10	10	10	10	10	10	10	10	10
37/38	10	10	10	10	10	10	10	10	10	10	10	10	10	10	10	10	10	10	10	10	10	10	10	10	10	10	10	10	10	10	10	10	10	10	10	10	10
25/26	10	10	10	10	10	10	10	10	10	10	10	10	10	10	10	10	10	10	10	10	10	10	10	10	10	10	10	10	10	10	10	10	10	10	10	10	10
11/12	10	10	10	10	10	10	10	10	10	10	10	10	10	10	10	10	10	10	10	10	10	10	10	10	10	10	10	10	10	10	10	10	10	10	10	10	10
1 & 2 Bravo	10	10	10	10	10	10	10	10	10	10	10	10	10	10	10	10	10	10	10	10	10	10	10	10	10	10	10	10	10	10	10	10	10	10	10	10	10

**NOTE: This is automated data that may/may not agree with the official BAM thinking that's found on the daily slides or special visibility report slides. This data should be used as a guide only**

# Houston Pilots Wind Chart



## Forecast Confidence



## Example

Sustained wind 13 Knots  
Gusts 18 Knots  
Wind from the N

WS: 13  
G:18  
N

Time Knots	Fri 2pm	Fri 3pm	Fri 4pm	Fri 5pm	Fri 6pm	Fri 7pm	Fri 8pm	Fri 9pm	Fri 10pm	Fri 11pm	Sat 12am	Sat 1am	Sat 2am	Sat 3am	Sat 4am	Sat 5am	Sat 6am	Sat 7am	Sat 8am	Sat 9am	Sat 10am	Sat 11am	Sat 12pm	Sat 1pm	Sat 2pm	Sat 3pm	Sat 4pm	Sat 5pm	Sat 6pm	Sat 7pm	Sat 8pm	Sat 9pm	Sat 10pm	Sat 11pm	Sun 12am	Sun 1am	
610 Bridge	11	11	11	10	10	11	10	10	10	10	10	9	9	8	9	8	7	7	7	8	9	8	8	7	6	6	6	5	5	5	5	6	6	6	7	7	
	16	16	16	15	15	16	15	16	15	15	15	14	13	13	13	13	11	11	11	12	11	11	10	9	9	8	8	8	8	8	8	8	8	8	9	9	10
	N	N	N	N	N	N	N	N	N	NNE	NNE	NNE	NNE	NNE	NNE	NNE	NNE	NNE	NNE	NNE	NNE	NE	NE	NE	NE	NE	NE	NE	NE	NE	ENE	ENE	ENE	ENE	ENE		
Kinder 1	11	11	11	10	10	10	10	10	10	10	10	9	9	8	8	8	7	7	7	9	9	8	8	7	7	6	6	5	5	5	5	6	6	6	7	7	
	16	16	16	15	15	16	15	16	15	15	15	14	13	13	13	13	11	11	11	12	11	10	10	9	9	9	8	8	8	8	8	8	8	9	9	10	
	N	N	N	N	N	N	N	N	N	NNE	NNE	NNE	NNE	NNE	NNE	NNE	NNE	NNE	NNE	NNE	NE	NE	NE	NE	NE	NE	NE	NE	NE	ENE	ENE	ENE	ENE	ENE			
Greens Bayou	12	11	11	10	10	10	10	10	10	10	10	9	9	8	8	8	7	7	7	8	9	8	8	7	7	7	7	5	5	5	6	6	6	7	7		
	16	16	15	15	15	15	16	15	15	15	14	13	12	13	12	11	11	11	12	11	10	10	9	9	9	8	8	8	8	8	8	8	9	9	9		
	N	N	N	N	ENE	N	N	N	N	NNE	NNE	NNE	NNE	NNE	NNE	NNE	NNE	NNE	NNE	NE	NE	NE	NE	NE	NE	NE	NE	NE	NE	ENE	ENE	ENE	ENE	ENE			
Shell Crude	12	11	11	10	10	10	10	11	10	10	10	9	9	8	8	8	7	7	8	8	9	8	8	7	7	7	5	5	5	6	6	6	7	7			
	16	16	15	15	15	15	16	15	15	15	14	13	12	13	12	11	11	11	12	11	11	10	9	9	9	9	8	8	8	8	8	9	9	10			
	N	N	N	N	SSW	N	N	N	N	N	N	NNE	NNE	NNE	NNE	NNE	NNE	NNE	NNE	NNE	NE	NE	NE	NE	NE	NE	NE	NE	NE	ENE	ENE	ENE	ENE	ENE			
Lynchburg Ferries	13	12	12	11	10	10	10	11	11	10	10	9	9	9	9	8	8	8	8	8	9	9	9	8	7	7	7	6	6	6	6	7	7	7			
	16	16	15	15	15	15	16	15	14	14	13	13	12	12	12	11	11	11	12	11	10	10	10	9	9	9	8	8	8	8	9	9	9	10	10		
	N	N	N	N	W	N	N	N	N	N	NNE	NNE	NNE	NNE	NNE	NNE	NNE	NNE	NNE	NNE	NE	NE	NE	NE	NE	NE	NE	NE	NE	ENE	ENE	ENE	ENE	ENE			
Exxon 3	13	12	12	11	11	11	11	12	11	10	10	10	9	9	9	9	9	9	9	9	9	9	9	8	8	8	8	7	6	6	7	7	8	8	8		
	16	16	16	15	15	15	16	15	14	14	13	13	13	13	13	12	12	12	12	11	11	10	10	10	10	10	9	8	8	9	10	10	11	11			
	N	N	N	E	W	N	N	N	N	NNE	NNE	NNE	NNE	NNE	NNE	NNE	NNE	NNE	NNE	NE	NE	NE	NE	NE	NE	NE	NE	NE	NE	ENE	ENE	ENE	ENE	ENE			
Morgans Point	13	13	13	12	12	12	13	13	12	12	11	12	11	11	11	11	11	11	11	10	11	10	9	8	8	8	9	8	8	9	9	10	10	11			
	16	16	16	16	16	15	16	16	16	15	15	14	15	14	14	14	14	13	13	13	12	12	11	11	10	11	11	10	11	11	12	12	13	13			
	N	N	N	ESE	S	N	N	NNE	N	NNE	NNE	NNE	NNE	NNE	NNE	NNE	NNE	NNE	NNE	NE	NE	NE	NE	NE	NE	NE	NE	NE	NE	ENE	ENE	ENE	ENE	ENE			
75/76	14	14	14	15	15	15	16	16	16	16	15	15	16	15	16	16	16	15	14	14	13	11	10	9	9	10	11	11	12	12	13	14	15	15			
	17	17	17	17	17	17	18	18	18	18	17	17	18	17	18	18	17	17	16	16	16	14	13	12	12	12	12	13	14	14	16	16	17				
	N	N	N	NNE	ENE	N	NNE	NNE	NNE	NNE	NNE	NNE	NNE	NNE	NNE	NNE	NNE	NNE	NNE	NE	NE	NE	NE	NE	NE	NE	NE	NE	NE	ENE	ENE	ENE	ENE	ENE			
63/64	14	14	15	16	16	17	18	18	19	19	18	18	18	18	19	19	18	17	16	14	13	11	10	10	10	11	12	12	13	14	16	16	17				
	17	17	17	17	18	19	20	21	20	19	20	20	20	20	20	20	20	20	18	18	16	14	13	12	12	12	13	14	15	17	18	17	18				
	N	N	N	N	N	N	NNE	NNE	NNE	NNE	NNE	NNE	NNE	NNE	NNE	NNE	NNE	NNE	NE	NE	NE	NE	NE	NE	NE	NE	NE	NE	ENE	ENE	ENE	ENE	ENE				
51/52	15	14	15	16	16	17	18	18	19	19	18	18	18	18	18	18	18	18	17	16	14	13	11	10	10	10	11	12	13	13	15	16	15				
	17	17	16	17	18	19	19	20	20	19	20	19	20	19	20	20	20	19	18	18	16	15	14	13	12	12	12	13	14	14	16	17	16				
	N	N	N	N	N	N	NNE	NNE	NNE	NNE	NNE	NNE	NNE	NNE	NNE	NNE	NNE	NNE	NE	NE	NE	NE	NE	NE	NE	NE	NE	NE	ENE	ENE	ENE	ENE	ENE				
37/38	15	14	15	16	17	17	18	18	19	18	18	18	18	18	18	18	18	17	16	15	14	12	11	10	10	11	12	13	14	15	14	14					
	17	16	16	17	17	19	20	20	21	19	20	19	20	19	20	20	20	19	19	18	16	15	14	13	12	12	11	12	13	14	15	16	16				
	N	N	N	N	N	NNE	NNE	NNE	NNE	NNE	NNE	NNE	NNE	NNE	NNE	NNE	NNE	NNE	NE	NE	NE	NE	NE	NE	NE	NE	NE	NE	ENE	ENE	ENE	ENE	ENE				
25/26	15	14	14	14	14	15	16	16	17	17	16	17	16	16	16	16	16	16	15	14	14	12	11	10	10	10	11	12	13	13	13	13					
	17	16	16	16	16	17	18	19	19	18	19	18	18	18	18	18	18	18	17	16	16	14	13	12	11	11	11	12	13	14	14	14					
	N	N	N	N	N	N	NNE	NNE	NNE	NNE	NNE	NNE	NNE	NNE	NNE	NNE	NNE	NNE	NE	NE	NE	NE	NE	NE	NE	NE	NE	NE	ENE	ENE	ENE	ENE	ENE				
11/12	14	14	14	13	14	15	15	16	16	17	16	16	16	16	16	16	16	16	15	14	14	12	11	10	10	10	10	11	12	12	13	13	13				
	17	16	16	15	15	17	17	18	19	19	18	18	18	18	18	18	18	18	17	16	16	14	13	12	11	11	11	12	13	14	15	14	14				
	N	N	NNE	N	N	NNE	NNE	NNE	NNE	NNE	NNE	NNE	NNE	NNE	NNE	NNE	NNE	NNE	NE	NE	NE	NE	NE	NE	NE	NE	NE	NE	ENE	ENE	ENE	ENE	ENE				
1 & 2 Bravo	17	17	17	17	19	20	20	20	21	20	20	20	20	20	21	20	20	19	19	18	17	15	13	12	12	13	13	13	15	15	16	17	17				
	18	18	18	18	19	21	21	22	23	22	22	22	22	22	22	22	21	21	21	21	19	18	16	14	13	13	14	14	16	17	18	18	18				
	N	N	NNE	N	N	NNE	NNE	NNE	NNE	NNE	NNE	NNE	NNE	NNE	NNE	NNE	NNE	NNE	NE	NE	NE	NE	NE	NE	NE	NE	NE	NE	ENE	ENE	ENE	ENE	ENE				

NOTE: This is automated data that may/may not agree with the official BAM thinking that's found on the daily slides or special visibility report slides. This data should be used as a guide only

# Houston Pilots: Fri. 01/19/2024



## Forecast Discussion

**Precip:** Dry conditions will continue this evening and into the overnight hours.

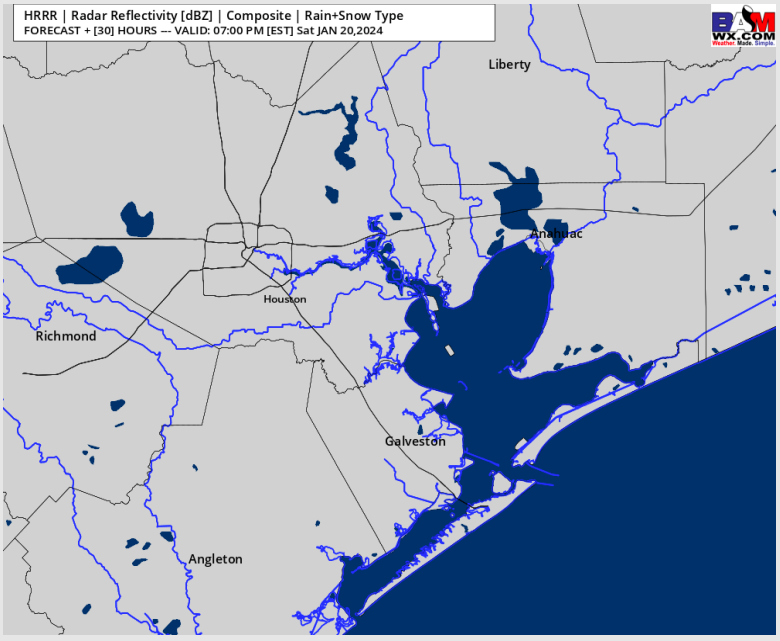
**Wind:** Sustained winds from the N/NNE for this afternoon. **N Morgan's Point:** 9 - 14 kts prior to 6 PM, calming slightly to 7 - 12 kts thereafter. **S of Morgan's Point:** 11 - 16 kts prior to 6 PM, increasing slightly to 14 - 19 kts after 6 PM.

**Boarding Station** winds will remain rather consistent at 19 - 24 kts for the remainder of today. **Wind gusts of up to 26 - 28 kts will be possible at the Boarding Station and 11/12 this afternoon. Gusts to 23 kts possible for all stations north.**

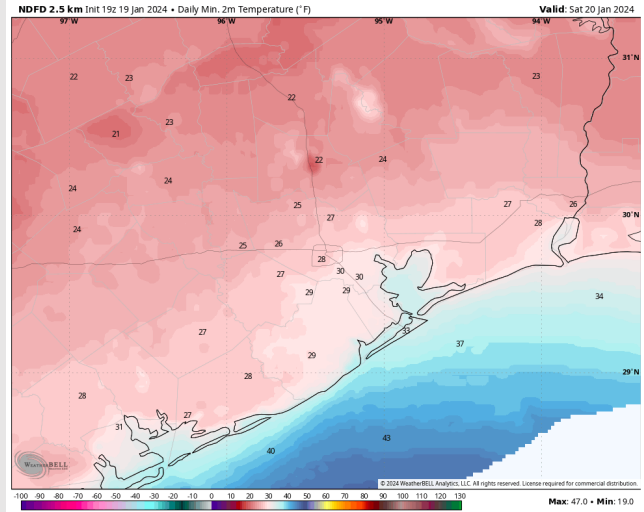
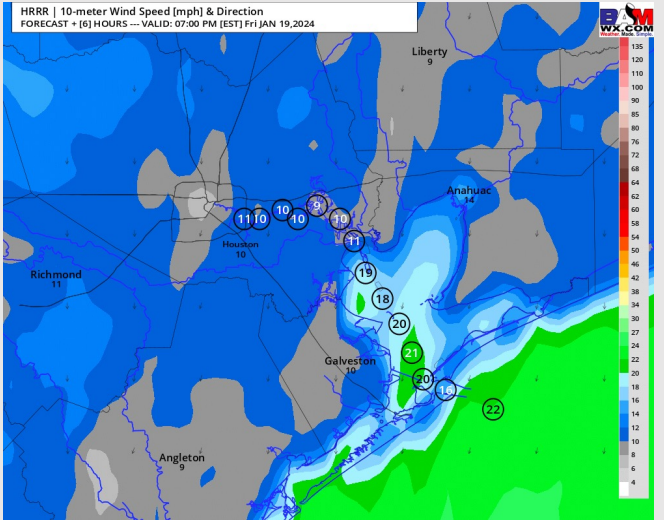
**Low Temps:** **N of Morgan's Point:** Upper 20s to near 30 F **S of Morgan's Point:** Mid 30s F. Mid to upper 30s F at the Boarding Station.

**Visibility:** Not anticipating any visibility concerns at this time due to elevated northerly winds.

## Precip Image: 6 PM CT



Wind Speed:  
6 PM CT



Low Temps  
SAT AM

# Houston Pilots: Sat. 01/20/2024



## Forecast Discussion

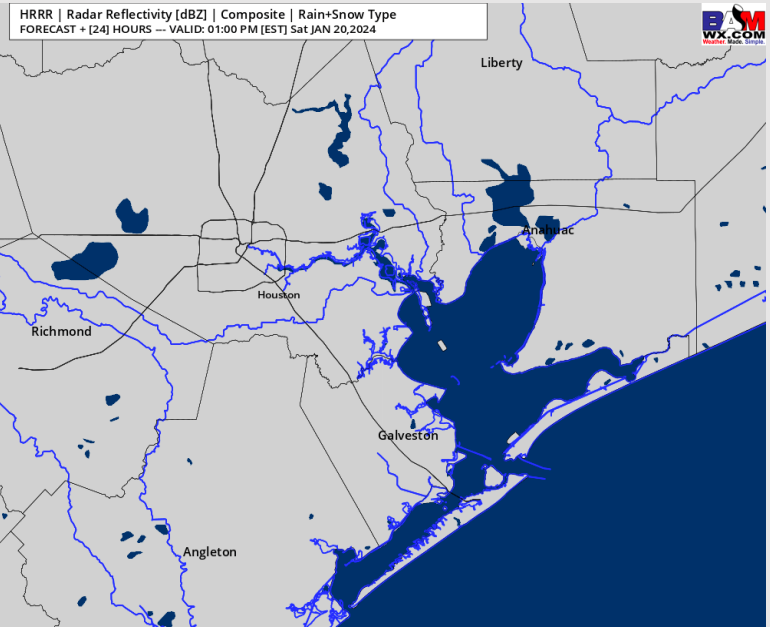
**Precip:** Favoring dry conditions to continue Saturday.

**Wind:** Winds expected to remain out of the NE through the late afternoon before veering out of the ENE in the late evening (~7 PM). **N of Morgan's Point:** 5 - 10 kts through 12 PM before decreasing slightly to 4 - 8 kts. **S of Morgan's Point:** 14- 19 kts will begin a weakening trend near 11 AM, with winds at 8 - 13 kts by 1 PM. The **Boarding Station** will start at 18 - 23 kts and calm to 13 - 18 kts by 12 PM. A few gusts of up to 25 kts will be possible prior to sunrise at the Boarding Station.

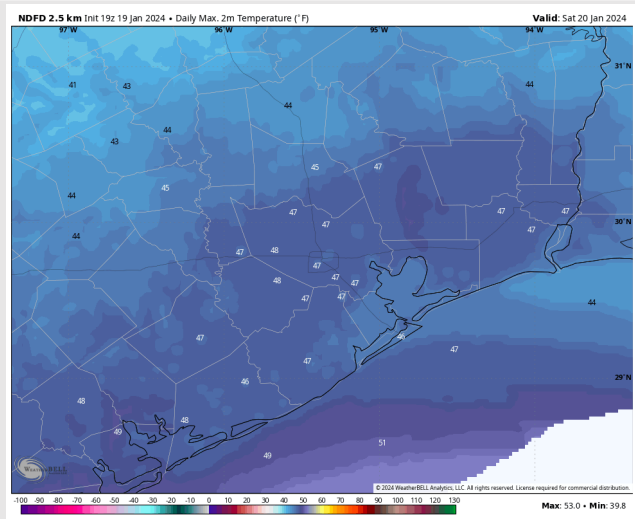
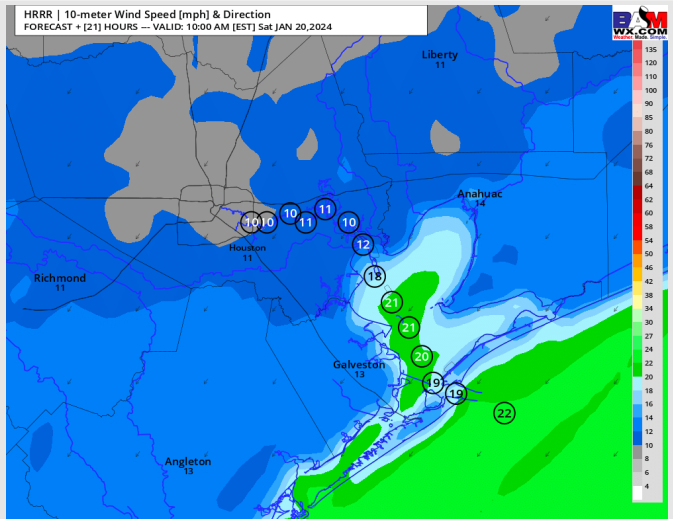
**High Temps:** Cool Down given Passage of Front. **N of Morgan's Point:** Mid 40s F **S of Morgan's Point:** Mid 40s F

**Visibility:** No visibility concerns for Saturday.

## Precip Image: 12 PM CT



Wind Speed:  
9 AM CT



High Temps  
Saturday

# Houston Pilots: Sun. 01/21/2024



## Forecast Discussion

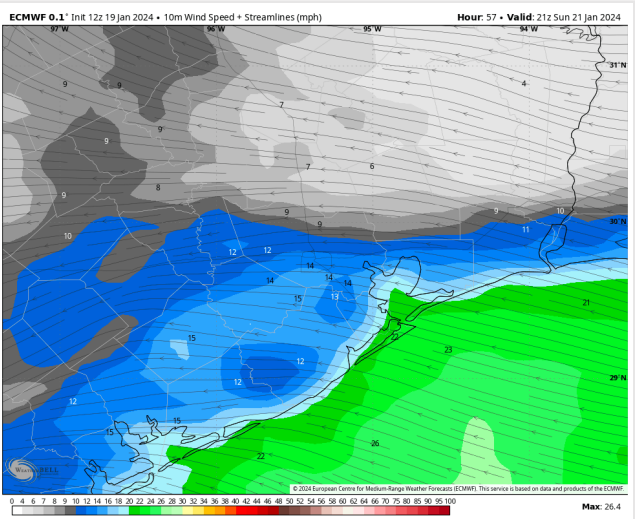
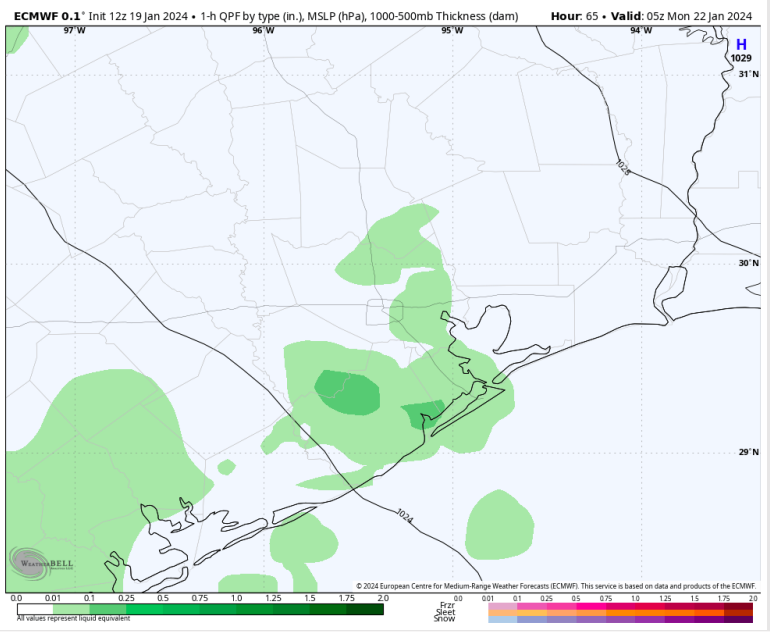
**Precip:** Dry conditions favored through 4 PM SUN, with scattered showers building in from the West after that time. Most coverage would not enter the area until roughly 10 PM, keeping PM chances isolated (20%)

**Wind:** Winds will remain out of the ENE throughout the day Sunday becoming E near 10 AM - 12 PM. **N Morgan's Point:** Winds will be at 5 - 10 kts through 8 AM CT, increasing to 8-13 kts after that time. **S of Morgan's Point:** 13 - 18 kts prior to 6 AM, increasing to 17 - 22 kts thereafter. **Wind gusts of up to 25 - 28 kts can be possible in the AM south of Morgan's Point.**

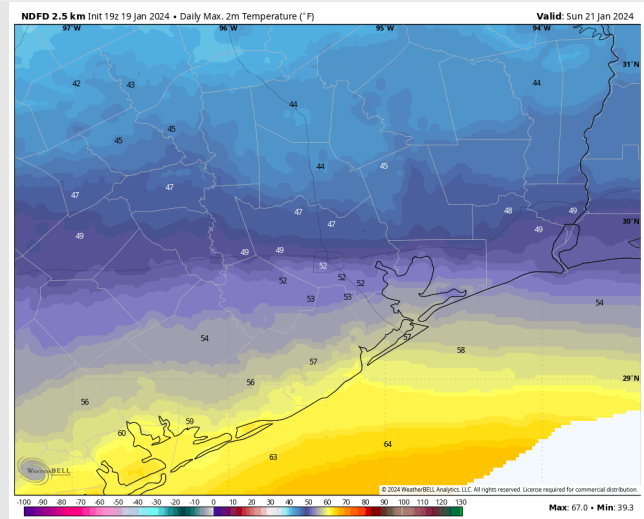
**High Temps:** Slightly warmer. **N of Morgan's Point:** Low 50s F. **S of Morgan's Point:** Mid 50s F. Upper 50s F at the Boarding Station.

**Visibility:** No visibility concerns for Sunday.

## Precip Image: 11 PM CT



Wind Speed:  
3 PM CT

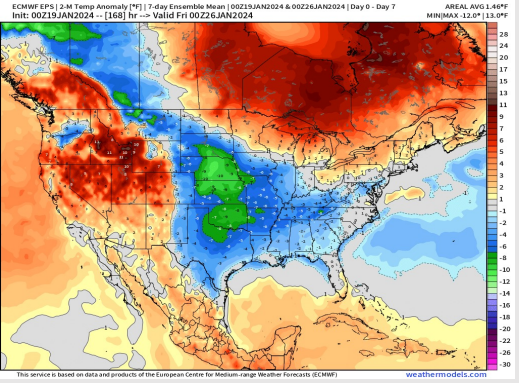


High Temps  
Sunday

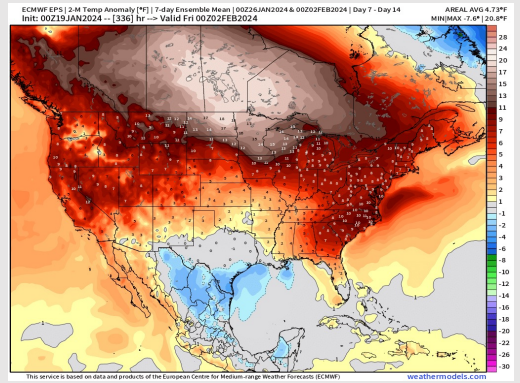
# Houston Pilots: 1/19/24



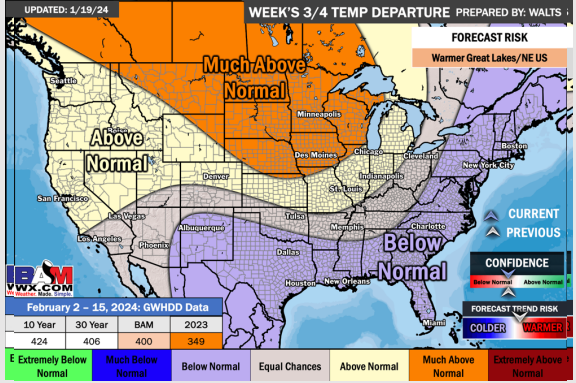
## Next 7 Day Temperature Departure



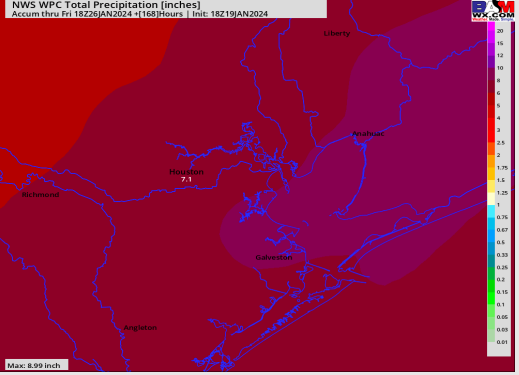
## 8-14 Day Temperature Departure



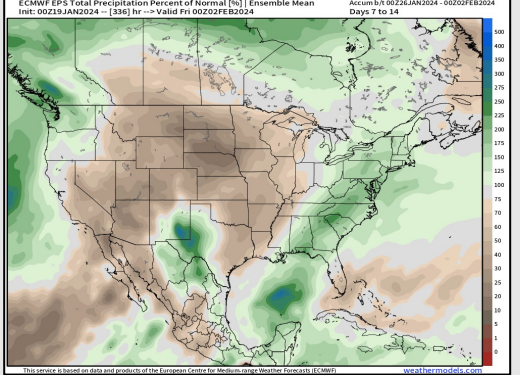
## 15-30 Day Temperature Departure



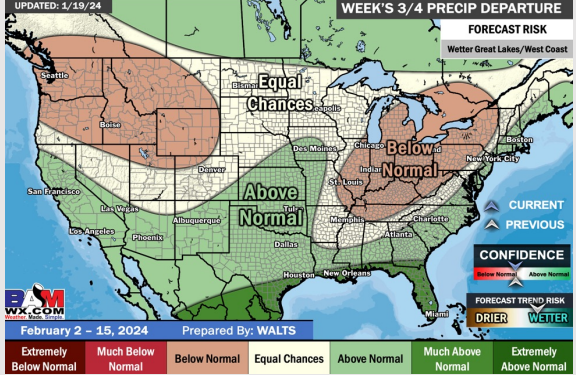
## Next 7 Day Total Precipitation



## 8-14 Day % of Average Precip.



## 15-30 Day % of Average Precip.



- Looking at MON for the next chance of significant rain. Downpours through next Thursday can yield rainfall amounts of 3- 5" + rain. Much below normal temperatures favored for the week ahead.
- Above normal rain chances are expected for the week 2 timeframe. Temps expected to warm up becoming above normal for the week 2 timeframe after a very cold stretch the week prior.
- Below normal temperatures and above normal chances for precipitation are favored in the weeks 3/4 timeframe.