

Houston Pilots Forecast Package



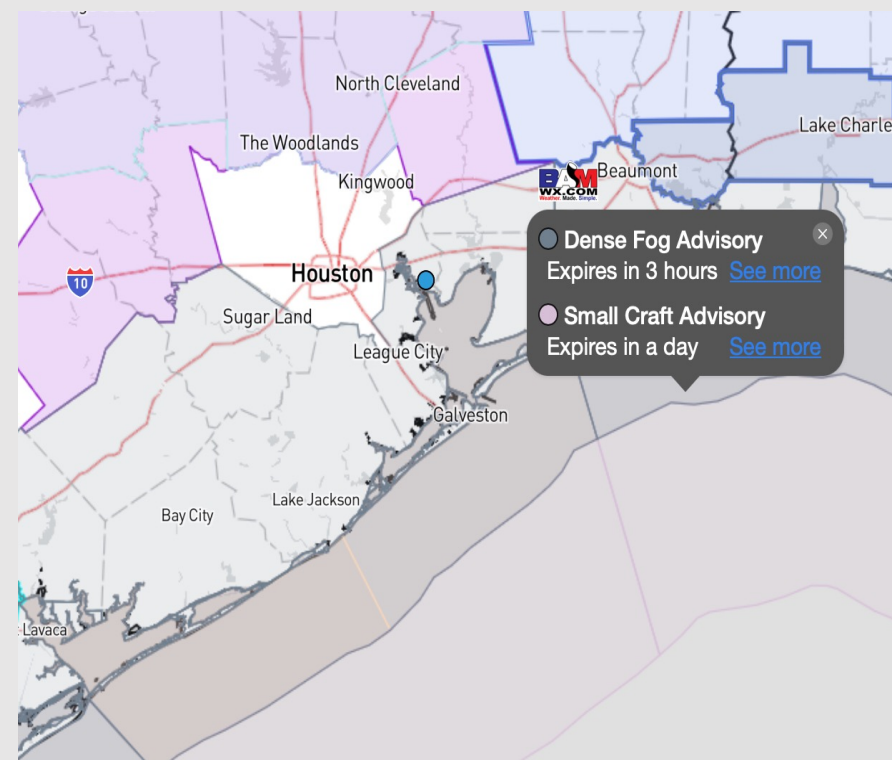
Updated: 2:10 AM CT

Friday, January 19, 2024

Forecaster: Tyler Riggles

Weather Headlines

- **Patchy to widespread fog will continue to work through the area this AM. See Visibility Slide for Additional Details**
- No precip chances are favored for the majority of the weekend, however scattered showers expected to return **SUN PM.**
- Front passage this morning will result in some gusty winds of locally up 32 kts for the Boarding Station.



Radar/NWS Alerts: 2:07 AM CT

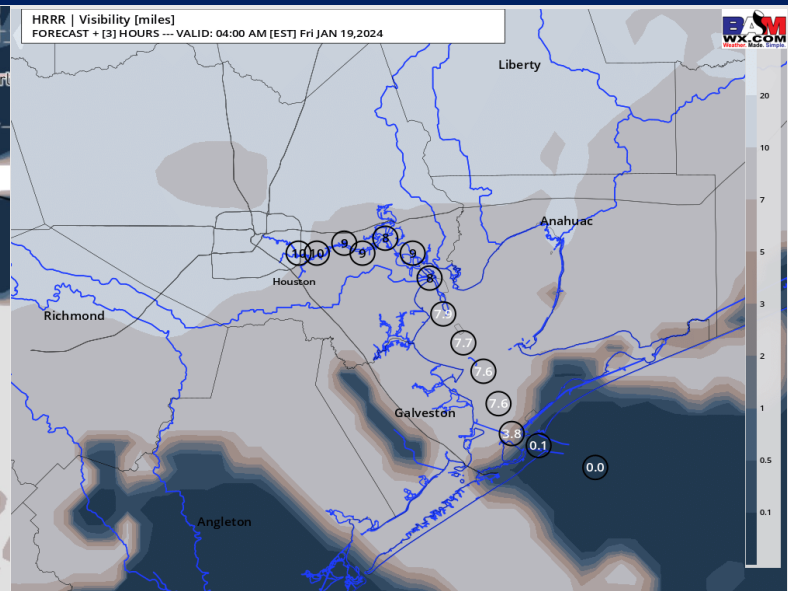
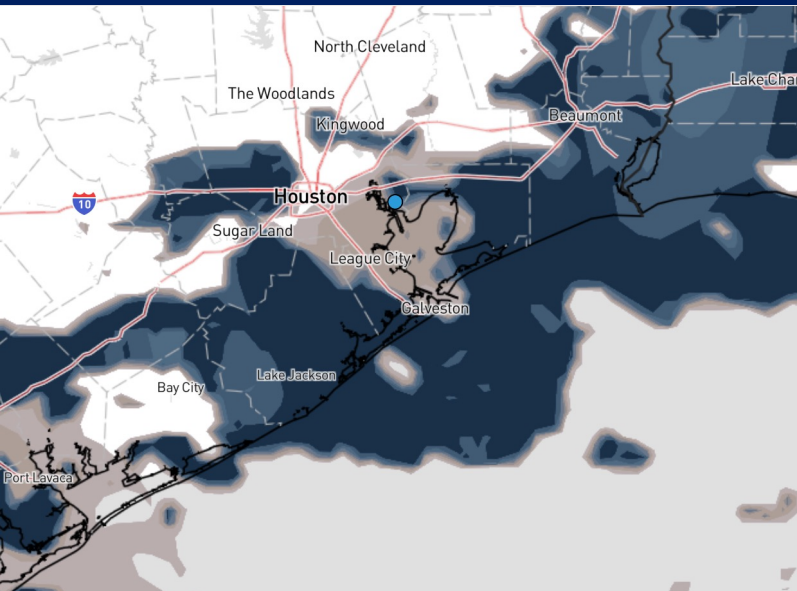


As always, please do not hesitate to reach out to us with any forecast questions via the chat option on the Weather Porthole or our on-call number, **(317)-560-8122** press 1 for forecast questions.

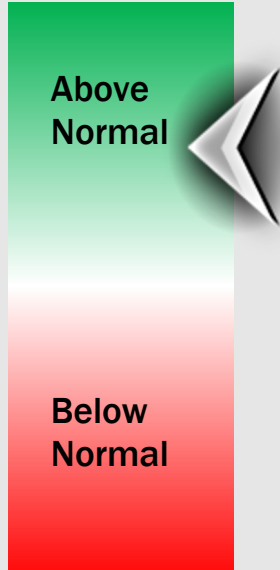
Houston Pilots Visibility Report



CURRENT VIS (1:30 AM CT) 3 AM CT FRI VISIBILITY



Confidence



TIMEFRAME DISCUSSED	THREAT
NOW - 6 AM CT	Med

- Patchy (and at times dense) fog will continue to work across the area through the early AM this morning due to a brief calming of the winds.
- The risk for reduced visibility will continue at its peak through 3 AM-CT, the most widespread and dense for all stations through this time. Visibility of less than 1 mile cannot be ruled out for that timeframe.
- Expecting the front moving through early this morning to gradually clear fog out of the area from N to S, clearing up visibility for most locations by ~5 AM-CT. Chances for fog can linger at the Boarding Station through ~6 AM-CT.

Houston Pilots Extended Range Visibility Report



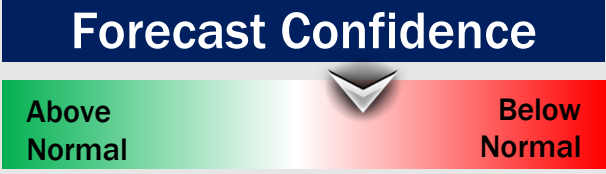
Monday 1/22/24

No visibility concerns for Monday



Tuesday 1/23/24

Keeping an eye on potential for sea fog during the evening hours. Low confidence on timing.



Wednesday 1/24/24

Monitoring potential for patchy fog to occur in gaps between showers Wednesday AM. Lower confidence at this time.



Chance for Fog

Monday AM	Unlikely
Monday PM	Unlikely
Tuesday AM	Unlikely
Tuesday PM	Possible
Wednesday AM	Possible
Wednesday PM	Unlikely

Houston Pilots Visibility Chart (miles)



Forecast Confidence



Time	Fri 1am	Fri 2am	Fri 3am	Fri 4am	Fri 5am	Fri 6am	Fri 7am	Fri 8am	Fri 9am	Fri 10am	Fri 11am	Fri 12pm	Fri 1pm	Fri 2pm	Fri 3pm	Fri 4pm	Fri 5pm	Fri 6pm	Fri 7pm	Fri 8pm	Fri 9pm	Fri 10pm	Fri 11pm	Sat 12am	Sat 1am	Sat 2am	Sat 3am	Sat 4am	Sat 5am	Sat 6am	Sat 7am	Sat 8am	Sat 9am	Sat 10am	Sat 11am	Sat 12pm							
610 Bridge	3	4	6	10	10	10	10	10	10	10	10	10	10	10	10	10	10	10	10	10	10	10	10	10	10	10	10	10	10	10	10	10	10	10	10	10	10	10					
Kinder 1	3	4	6	10	10	10	10	10	10	10	10	10	10	10	10	10	10	10	10	10	10	10	10	10	10	10	10	10	10	10	10	10	10	10	10	10	10	10					
Greens Bayou	0.99	4	6	9	10	10	10	10	10	10	10	10	10	10	10	10	10	10	10	10	10	10	10	10	10	10	10	10	10	10	10	10	10	10	10	10	10	10					
Shell Crude	1	4	6	6	10	10	10	10	10	10	10	10	10	10	10	10	10	10	10	10	10	10	10	10	10	10	10	10	10	10	10	10	10	10	10	10	10	10	10				
Lynchburg Ferries	1	4	5	6	8	10	10	10	10	10	10	10	10	10	10	10	10	10	10	10	10	10	10	10	10	10	10	10	10	10	10	10	10	10	10	10	10	10	10				
Exxon 3	1	3	4	6	6	9	10	10	10	10	10	10	10	10	10	10	10	10	10	10	10	10	10	10	10	10	10	10	10	10	10	10	10	10	10	10	10	10	10	10			
Morgans Point	1	0.98	4	5	6	8	10	10	10	10	10	10	10	10	10	10	10	10	10	10	10	10	10	10	10	10	10	10	10	10	10	10	10	10	10	10	10	10	10	10			
75/76	1	0.48	4	5	6	8	10	10	10	10	10	10	10	10	10	10	10	10	10	10	10	10	10	10	10	10	10	10	10	10	10	10	10	10	10	10	10	10	10	10			
63/64	1	0.48	4	5	6	8	10	10	10	10	10	10	10	10	10	10	10	10	10	10	10	10	10	10	10	10	10	10	10	10	10	10	10	10	10	10	10	10	10	10	10		
51/52	0.37	0.24	2	4	5	7	10	9	10	10	10	10	10	10	10	10	10	10	10	10	10	10	10	10	10	10	10	10	10	10	10	10	10	10	10	10	10	10	10	10	10		
37/38	0.29	0.24	0.24	0.24	4	6	10	8	10	10	10	10	10	10	10	10	10	10	10	10	10	10	10	10	10	10	10	10	10	10	10	10	10	10	10	10	10	10	10	10	10	10	
25/26	0.29	0.24	0.24	0.24	2	6	10	8	8	10	10	10	10	10	10	10	10	10	10	10	10	10	10	10	10	10	10	10	10	10	10	10	10	10	10	10	10	10	10	10	10	10	
11/12	0.29	0.24	0.24	0.24	0.24	5	10	8	8	10	10	10	10	10	10	10	10	10	10	10	10	10	10	10	10	10	10	10	10	10	10	10	10	10	10	10	10	10	10	10	10	10	
1 & 2 Bravo	0.29	0.24	0.24	0.24	0.24	1	10	8	8	10	10	10	10	10	10	10	10	10	10	10	10	10	10	10	10	10	10	10	10	10	10	10	10	10	10	10	10	10	10	10	10	10	10

NOTE: This is automated data that may/may not agree with the official BAM thinking that's found on the daily slides or special visibility report slides. This data should be used as a guide only

Houston Pilots Wind Chart



Forecast Confidence



Example

Sustained wind 13 Knots
Gusts 18 Knots
Wind from the N

WS: 13
G:18
N

Time Knots	Fri 1am	Fri 2am	Fri 3am	Fri 4am	Fri 5am	Fri 6am	Fri 7am	Fri 8am	Fri 9am	Fri 10am	Fri 11am	Fri 12pm	Fri 1pm	Fri 2pm	Fri 3pm	Fri 4pm	Fri 5pm	Fri 6pm	Fri 7pm	Fri 8pm	Fri 9pm	Fri 10pm	Fri 11pm	Sat 12am	Sat 1am	Sat 2am	Sat 3am	Sat 4am	Sat 5am	Sat 6am	Sat 7am	Sat 8am	Sat 9am	Sat 10am	Sat 11am	Sat 12pm			
610 Bridge	4	6	8	10	11	12	13	14	15	14	13	13	12	11	11	11	10	10	10	10	10	9	9	9	9	8	8	8	8	8	8	8	8	9	9	8	7		
	N	N	N	N	N	N	N	N	N	N	N	N	N	N	N	N	N	N	N	N	N	NNE	NNE	NNE	NNE	NNE	NNE	NNE	NNE	NNE	NNE	NNE	NNE	NNE	NNE	NNE	NNE		
Kinder 1	4	6	8	9	11	11	13	14	15	13	13	13	12	11	11	11	10	9	10	10	10	10	9	9	9	8	8	8	8	8	8	8	8	9	9	8	7		
	N	N	N	N	N	N	N	N	N	N	N	N	N	N	N	N	N	N	N	N	N	N	NNE	NNE	NNE	NNE	NNE	NNE	NNE	NNE	NNE	NNE	NNE	NNE	NNE	NNE	NNE		
Greens Bayou	4	6	8	9	10	11	12	14	14	14	13	13	12	12	11	11	10	9	10	9	10	10	9	9	8	8	8	8	8	8	8	8	8	9	9	8	8		
	N	N	N	N	N	N	N	N	N	N	N	N	N	N	N	N	N	N	N	N	N	N	NNE	NNE	NNE	NNE	NNE	NNE	NNE	NNE	NNE	NNE	NNE	NNE	NNE	NNE	NNE		
Shell Crude	4	6	8	9	10	11	12	13	14	14	14	13	12	12	11	12	11	9	10	10	10	10	9	9	8	8	8	8	8	8	8	8	8	8	9	9	8	8	
	N	NNE	N	N	N	N	N	N	N	N	N	N	N	N	N	N	N	N	SSW	N	N	N	N	NNE	NNE	NNE	NNE	NNE	NNE	NNE	NNE	NNE	NNE	NNE	NNE	NNE	NNE		
Lynchburg Ferries	4	6	8	10	10	12	12	13	14	14	14	13	13	13	12	12	11	10	10	10	11	10	10	9	9	9	8	9	8	8	8	8	8	8	9	9	8	8	
	N	NE	N	N	N	N	N	N	N	N	N	N	N	N	N	N	N	N	N	N	N	N	NNE	NNE	NNE	NNE	NNE	NNE	NNE	NNE	NNE	NNE	NNE	NNE	NNE	NNE	NNE	NNE	
Exxon 3	4	7	8	10	11	12	12	14	14	14	14	13	13	13	12	13	11	11	11	11	11	10	10	10	9	9	9	9	9	9	9	9	9	9	9	8	8		
	N	SE	N	N	N	N	N	N	N	N	NNE	N	N	N	N	N	N	N	S	N	N	NNE	NNE	NNE	NNE	NNE	NNE	NNE	NNE	NNE	NNE	NNE	NNE	NNE	NNE	NNE	NNE	NNE	
Morgans Point	5	7	9	11	12	14	14	15	15	15	14	14	13	13	13	14	13	12	12	12	12	12	12	11	11	11	12	11	11	11	11	11	11	11	10	9	8		
	N	WNW	N	N	N	N	N	N	NNE	NNE	NNE	N	N	N	N	N	N	N	NE	N	N	NNE	NNE	NNE	NNE	NNE	NNE	NNE	NNE	NNE	NNE	NNE	NNE	NNE	NNE	NNE	NNE	NNE	
75/76	6	8	11	14	16	17	18	18	18	17	17	15	14	14	14	14	15	15	16	16	16	16	16	15	15	16	16	16	16	16	16	15	15	14	13	11	9		
	NNW	N	N	N	N	N	N	N	NNE	NNE	NNE	N	N	N	N	N	N	N	NNE	NNE	NNE	NNE	NNE	NNE	NNE	NNE	NNE	NNE	NNE	NNE	NNE	NNE	NNE	NNE	NNE	NNE	NNE	NNE	
63/64	6	9	12	15	17	19	20	21	20	21	19	17	16	15	14	15	16	17	17	18	18	18	18	17	18	18	18	19	19	19	19	19	18	17	16	14	13	10	
	NNW	N	N	NNE	NNE	NNE	NNE	NNE	NNE	NNE	NNE	NNE	N	N	N	N	N	N	NNE	NNE	NNE	NNE	NNE	NNE	NNE	NNE	NNE	NNE	NNE	NNE	NNE	NNE	NNE	NNE	NNE	NNE	NNE	NNE	NNE
51/52	5	8	12	15	17	19	20	21	21	20	19	17	16	15	14	15	16	16	17	18	18	18	18	17	18	18	18	18	18	18	18	18	18	18	17	16	14	13	11
	NNW	N	N	NNE	NNE	NNE	NNE	NNE	NNE	NNE	NNE	NNE	N	N	N	N	N	N	NNE	NNE	NNE	NNE	NNE	NNE	NNE	NNE	NNE	NNE	NNE	NNE	NNE	NNE	NNE	NNE	NNE	NNE	NNE	NNE	NNE
37/38	5	7	11	14	16	19	20	21	22	20	20	18	17	16	15	15	16	16	17	17	18	18	18	17	17	18	18	18	18	18	18	18	18	17	16	15	14	12	
	NNW	N	N	NNE	NNE	NNE	NNE	NNE	NNE	NNE	NNE	NNE	N	N	N	N	N	N	NNE	NNE	NNE	NNE	NNE	NNE	NNE	NNE	NNE	NNE	NNE	NNE	NNE	NNE	NNE	NNE	NNE	NNE	NNE	NNE	NNE
25/26	5	7	10	13	15	17	18	20	20	19	19	17	16	15	14	14	15	14	15	16	16	17	17	16	16	16	16	16	16	16	16	16	16	16	15	14	13	12	
	NNW	N	N	NNE	NNE	NNE	NNE	NNE	NNE	NNE	NNE	NNE	N	N	N	N	N	N	NNE	NNE	NNE	NNE	NNE	NNE	NNE	NNE	NNE	NNE	NNE	NNE	NNE	NNE	NNE	NNE	NNE	NNE	NNE	NNE	NNE
11/12	5	7	10	13	14	16	18	19	20	19	19	17	16	15	14	14	14	14	15	16	16	16	17	15	16	16	16	16	16	16	16	16	16	15	14	13	12		
	NNW	N	N	NNE	NNE	NNE	NNE	NNE	NNE	NNE	NNE	NNE	NNE	N	N	N	N	N	NNE	NNE	NNE	NNE	NNE	NNE	NNE	NNE	NNE	NNE	NNE	NNE	NNE	NNE	NNE	NNE	NNE	NNE	NNE	NNE	NNE
1 & 2 Bravo	6	8	12	16	18	20	22	23	24	23	22	20	18	16	16	17	17	18	19	20	20	20	21	19	20	20	20	21	21	21	21	21	20	19	17	16	15		
	NNW	N	N	NNE	NNE	NNE	NNE	NNE	NNE	NNE	NNE	NNE	NNE	N	N	N	N	N	NNE	NNE	NNE	NNE	NNE	NNE	NNE	NNE	NNE	NNE	NNE	NNE	NNE	NNE	NNE	NNE	NNE	NNE	NNE	NNE	NNE

NOTE: This is automated data that may/may not agree with the official BAM thinking that's found on the daily slides or special visibility report slides. This data should be used as a guide only

Houston Pilots: Fri. 01/19/2024



Forecast Discussion

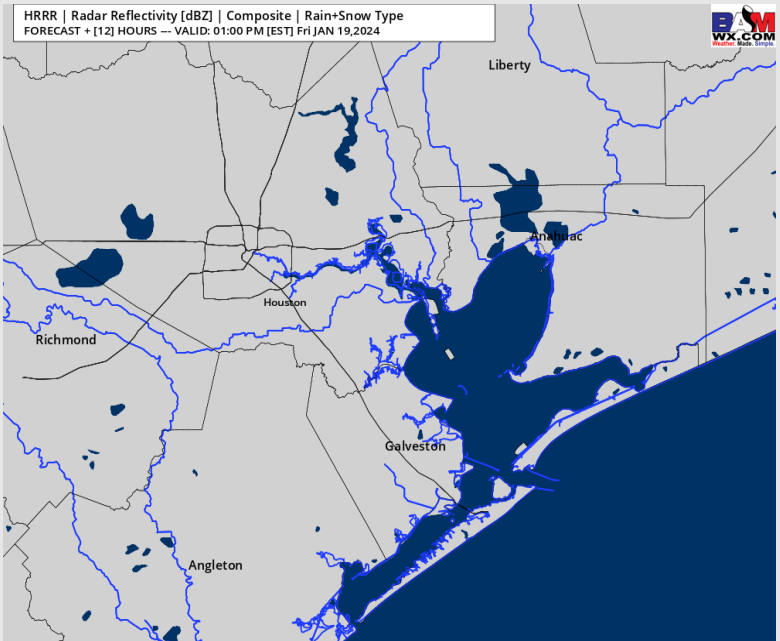
Precip: Favoring dry conditions for today.

Wind: Winds will begin out of the SW before quickly shifting to out of the NW by 2 AM and veer out of the NE by 7AM. **N Morgan's Point:** 5-10 kt winds will increase to 11 – 16 kts after 6AM and remain there for the rest of the day. **Gusts of 20-25 kts in play N of Morgan's Point through 6 PM. S of Morgan's Point:** 12 – 15 kt winds will increase to 18 – 22kts by 6 AM, with winds at the board station reaching closer to 20-24 kts. Winds after 4PM will gradually decrease to 16 – 20 kts (boarding station remains elevated). **Gusts of 25 - 30 kts will be in play for Stations S of Morgan's Point from 5 AM through 6 PM.** Boarding station will see gusts closer to 28 – 32kts the entire day.

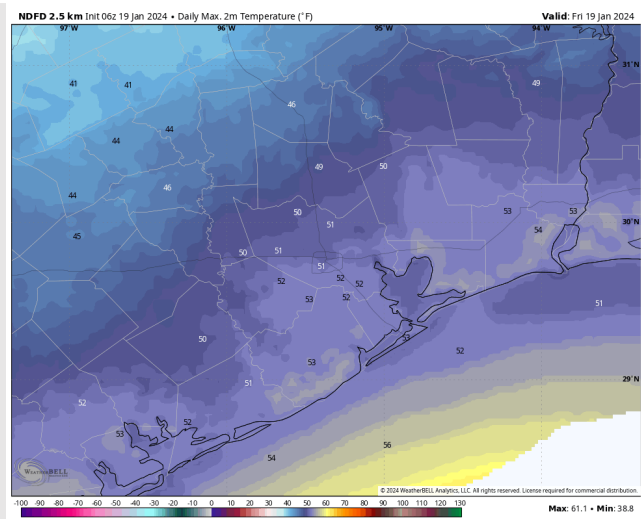
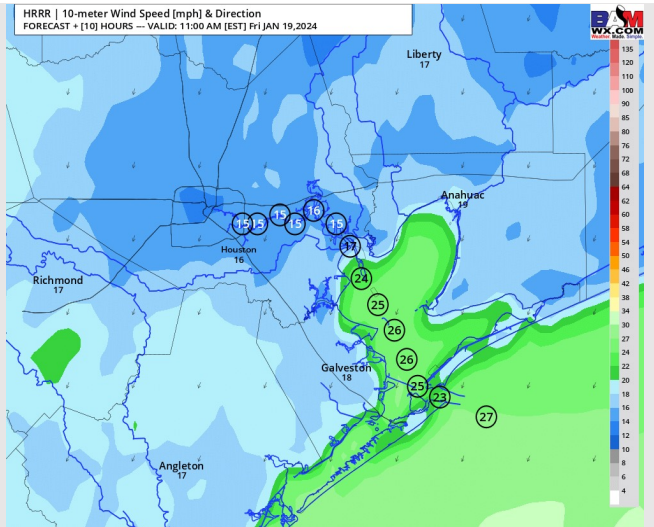
High Temps: **N of Morgan's Point:** Mid 50's F. **S of Morgan's Point:** Low 50s F.

Visibility: Patchy to widespread fog will continue in the area this morning. Check out visibility slide above for more info

Precip Image: 12 PM CT



Wind Speed:
10 AM CT



High Temps
Today

Houston Pilots: Sat. 01/20/2024



Forecast Discussion

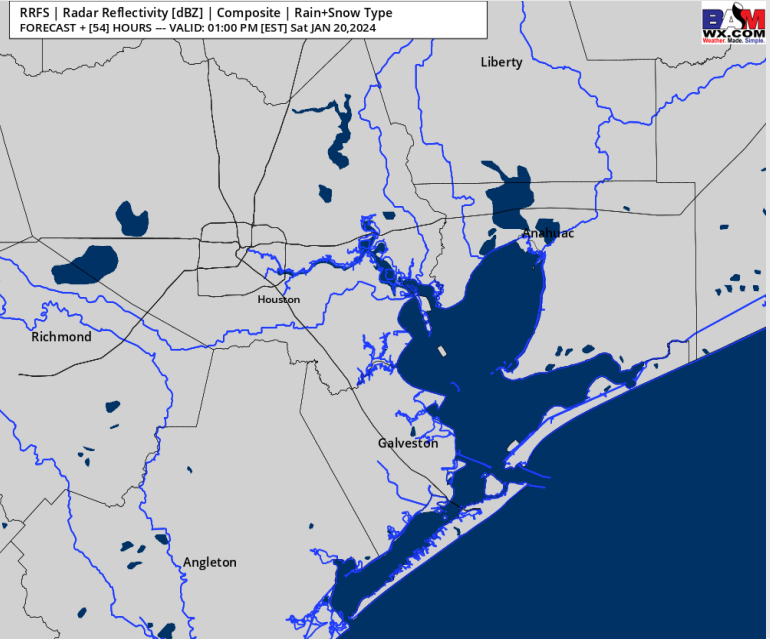
Precip: Favoring dry conditions for Saturday.

Wind: Winds expected to remain out of the NE through the late afternoon before veering out of the ENE ~4 PM. **N of Morgan's Point:** 4-9 kts through 12 PM before decreasing slightly to 3-8 kts. **S of Morgan's Point:** 10 – 15 kts throughout the day on SAT. Slightly higher winds towards 15-20 kts near the Boarding Station. **Wind gusts of 25-30 kts near the Boarding Station through 2 PM.**

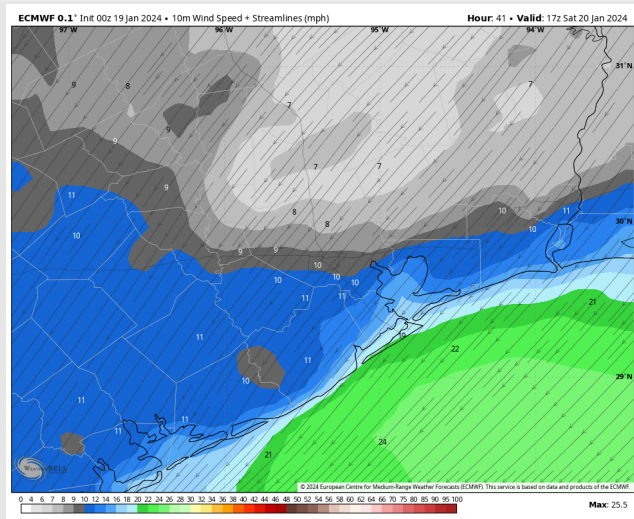
High Temps: Cool Down given Passage of Front **N of Morgan's Point:** Mid 40s **S of Morgan's Point:** Mid 40s F

Visibility: No visibility concerns for Saturday.

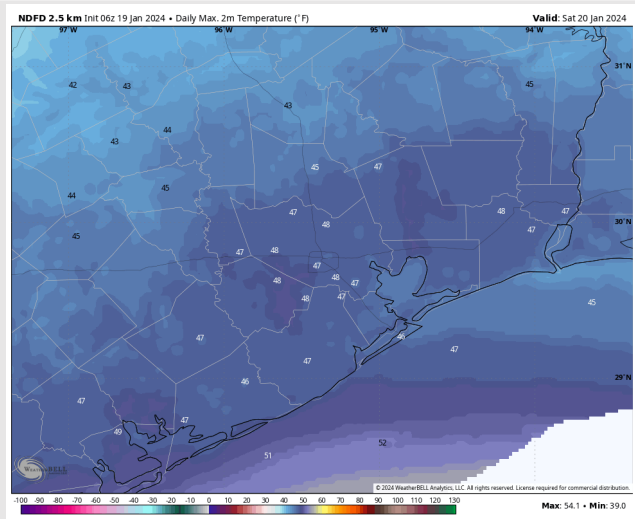
Precip Image: 12 PM CT



Wind Speed:
11 AM CT



High Temps
Saturday



Houston Pilots: Sun. 01/21/2024



Forecast Discussion

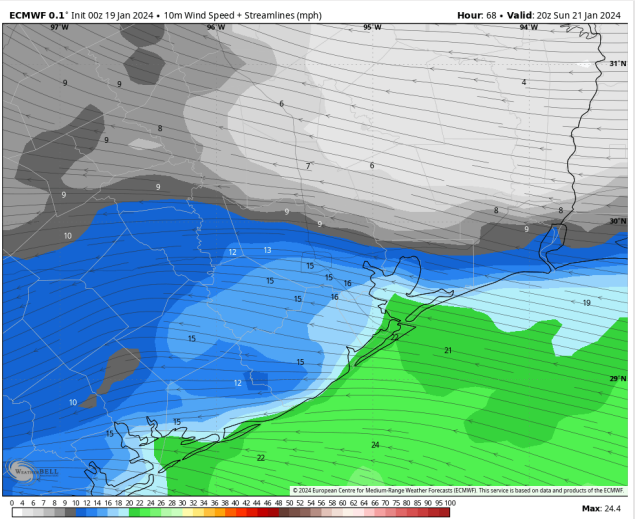
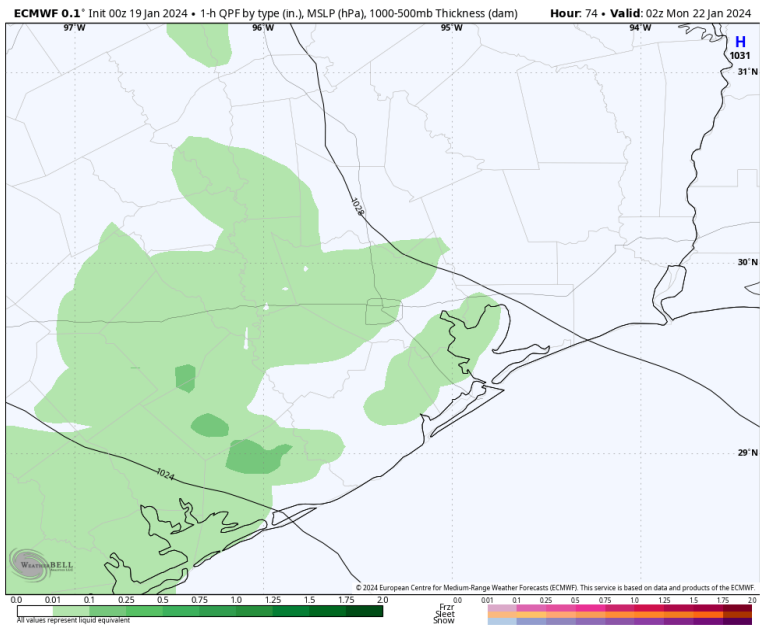
Precip: Dry conditions favored through 6 PM SUN, with scattered showers building in from the West after that time.

Wind: Winds will remain out of the ENE throughout the day Sunday. **N Morgan's Point:** Winds will be at 4-9 kts through 10 AM CT, increasing to 7-12 kts after that time. **S of Morgan's Point:** 15-20 kt winds throughout the day.

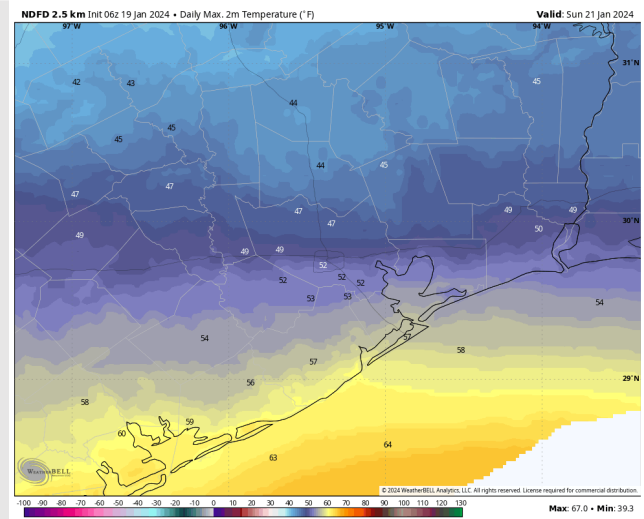
High Temps: **N of Morgan's Point:** Low 50s F. **S of Morgan's Point:** Upper 50s F.

Visibility: No visibility concerns for Sunday.

Precip Image: 8 PM CT



Wind Speed:
2 PM CT

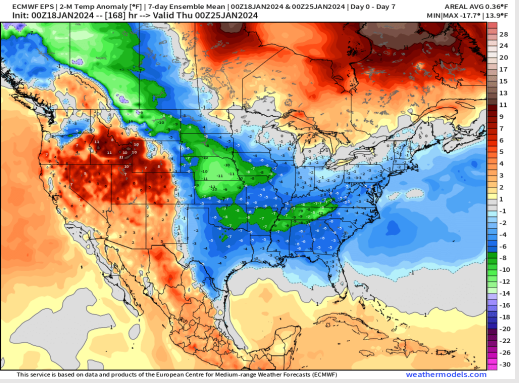


High Temps
Sunday

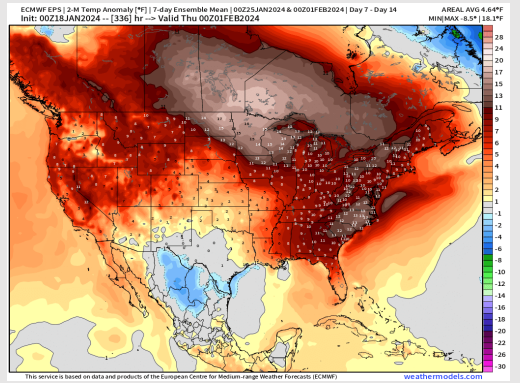
Houston Pilots: 1/19/24



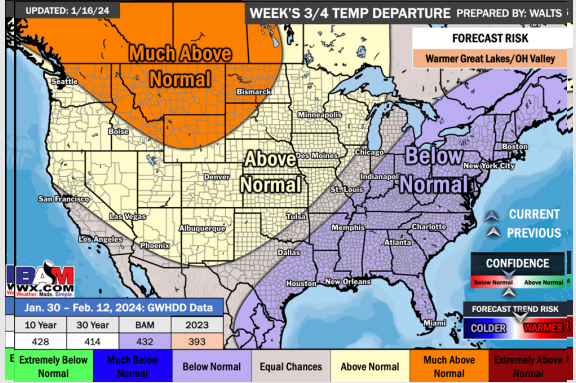
Next 7 Day Temperature Departure



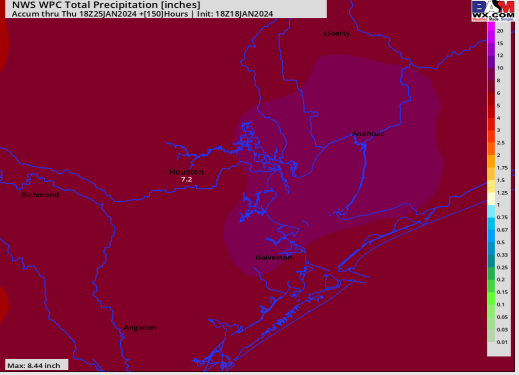
8-14 Day Temperature Departure



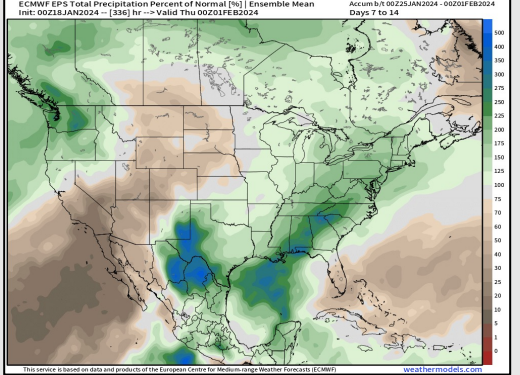
15-30 Day Temperature Departure



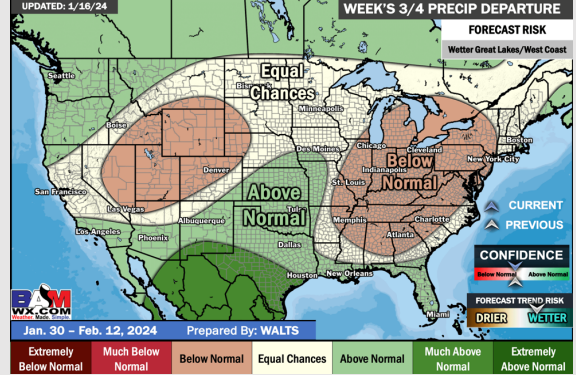
Next 7 Day Total Precipitation



8-14 Day % of Average Precip.



15-30 Day % of Average Precip.



- Looking at MON for the next chance of significant rain. Much below normal temperatures favored for the week ahead.
- Above normal rain chances are expected for the week 2 timeframe. Temps expected to warm up becoming above normal for the week 2 timeframe after a very cold stretch the week prior.
- Below normal temperatures and above normal chances for precipitation are favored in the weeks 3/4 timeframe.