

# Houston Pilots Forecast Package



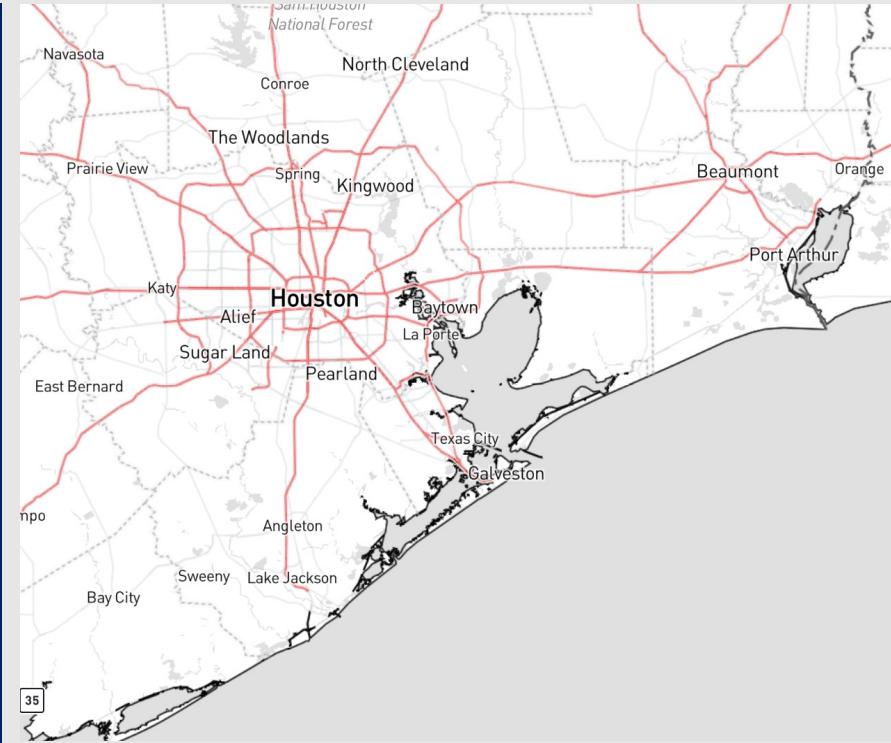
Updated: 4:25 AM CT

Tuesday, January 2, 2024

Forecaster: Will Danby

## Weather Headlines

- Winds will be on the increase late this afternoon with the arrival of a cold front from ~11 PM - 2 AM. Winds can become elevated at the Boarding Station during this time.
- Fog does not look to be a concern in the forecast outside of a low-end risk to watch Thursday AM
- Outside of rain exiting early WED, the next round of rain showers will enter early FRI AM.



**Radar/NWS Alerts: 4:20 AM CT**



As always, please do not hesitate to reach out to us with any forecast questions via the chat option on the Weather Porthole or our on-call number, **(317)-560-8122** press 1 for forecast questions.

# Houston Pilots Extended Range Visibility Report



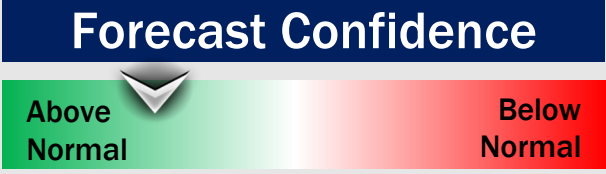
## Friday 1/5/24

No visibility concerns for Friday. Rain Showers/downpours can cause visibility to drop ~2 mi.



## Saturday 1/6/24

No visibility concerns for Saturday.



## Sunday 1/7/24

No visibility concerns for Sunday.



## Chance for Fog

Friday AM	Unlikely
Friday PM	Unlikely
Saturday AM	Unlikely
Saturday PM	Unlikely
Sunday AM	Unlikely
Sunday PM	Unlikely

# Houston Pilots Visibility Chart (miles)



## Forecast Confidence



Time	Tue 4am	Tue 5am	Tue 6am	Tue 7am	Tue 8am	Tue 9am	Tue 10am	Tue 11am	Tue 12pm	Tue 1pm	Tue 2pm	Tue 3pm	Tue 4pm	Tue 5pm	Tue 6pm	Tue 7pm	Tue 8pm	Tue 9pm	Tue 10pm	Tue 11pm	Wed 12am	Wed 1am	Wed 2am	Wed 3am	Wed 4am	Wed 5am	Wed 6am	Wed 7am	Wed 8am	Wed 9am	Wed 10am	Wed 11am	Wed 12pm	Wed 1pm	Wed 2pm	Wed 3pm	
<b>610 Bridge</b>	10	10	10	10	10	10	10	10	10	10	10	10	10	9	7	7	6	6	4	4	3	3	4	5	5	5	5	5	5	3	4	7	10	10	10	10	10
<b>Kinder 1</b>	10	10	10	10	10	10	10	10	10	10	10	10	10	9	7	7	7	6	5	5	5	4	5	5	5	5	5	5	4	5	7	10	10	10	10	10	
<b>Greens Bayou</b>	10	10	10	10	10	10	10	10	10	10	10	10	10	10	8	7	8	7	7	6	6	5	6	5	5	7	7	7	6	7	8	10	10	10	10	10	
<b>Shell Crude</b>	10	10	10	10	10	10	10	10	10	10	10	10	10	9	7	7	9	9	9	9	9	5	9	4	4	8	9	9	9	9	9	9	10	10	10	10	10
<b>Lynchburg Ferries</b>	10	10	10	10	10	10	10	10	10	10	10	10	10	10	8	7	10	9	9	9	9	5	9	4	4	8	9	9	9	9	9	9	10	10	10	10	10
<b>Exxon 3</b>	10	10	10	10	10	10	10	10	10	10	10	10	10	10	7	7	10	10	10	9	9	5	9	4	4	8	9	9	9	9	9	9	10	10	10	10	10
<b>Morgans Point</b>	10	10	10	10	10	10	10	10	10	10	10	10	10	8	7	7	10	10	10	9	9	7	9	4	5	9	9	9	9	9	9	9	10	10	10	10	10
<b>75/76</b>	10	10	10	10	10	10	10	10	10	10	10	10	10	8	7	7	10	10	10	9	9	7	9	4	7	9	9	9	9	9	9	9	10	10	10	10	10
<b>63/64</b>	10	10	10	10	10	10	10	10	10	10	10	10	10	7	7	6	10	10	10	9	9	7	9	4	8	9	9	9	9	9	9	9	10	10	10	10	10
<b>51/52</b>	10	10	10	10	10	10	10	10	10	10	10	10	9	7	6	6	10	10	10	9	9	8	9	4	9	9	9	9	9	9	9	9	10	10	10	10	10
<b>37/38</b>	10	10	10	10	10	10	10	10	10	10	10	10	9	6	5	5	10	10	10	9	9	8	7	4	9	9	9	9	9	9	9	9	10	10	10	10	10
<b>25/26</b>	10	10	10	10	10	10	10	10	10	10	10	10	9	6	5	5	10	10	10	9	9	9	6	5	9	9	9	9	9	9	9	9	10	10	10	10	10
<b>11/12</b>	10	10	10	10	10	10	10	10	10	10	10	10	9	6	5	5	10	10	10	8	9	9	6	5	9	9	9	9	9	9	9	9	10	10	10	10	10
<b>1 &amp; 2 Bravo</b>	10	10	10	10	10	10	10	10	10	10	10	9	6	5	5	5	10	10	10	6	9	9	7	6	8	9	9	9	9	9	9	9	10	10	10	10	10

**NOTE: This is automated data that may/may not agree with the official BAM thinking that's found on the daily slides or special visibility report slides. This data should be used as a guide only**

# Houston Pilots Wind Chart



## Forecast Confidence



## Example

Sustained wind 13 Knots  
Gusts 18 Knots  
Wind from the N

WS: 13  
G:18  
N

Time Knots	Tue 4am	Tue 5am	Tue 6am	Tue 7am	Tue 8am	Tue 9am	Tue 10am	Tue 11am	Tue 12pm	Tue 1pm	Tue 2pm	Tue 3pm	Tue 4pm	Tue 5pm	Tue 6pm	Tue 7pm	Tue 8pm	Tue 9pm	Tue 10pm	Tue 11pm	Wed 12am	Wed 1am	Wed 2am	Wed 3am	Wed 4am	Wed 5am	Wed 6am	Wed 7am	Wed 8am	Wed 9am	Wed 10am	Wed 11am	Wed 12pm	Wed 1pm	Wed 2pm	Wed 3pm	
<b>610 Bridge</b>	4 11 NE	4 11 ENE	4 12 ENE	4 14 ENE	5 13 ENE	6 13 ENE	6 10 ENE	5 9 ENE	5 8 E	6 6 E	6 6 E	6 13 ESE	6 6 ESE	9 15 E	9 14 E	9 15 E	10 15 E	9 14 ENE	9 15 ENE	9 14 NE	9 14 NNE	9 14 NNE	10 15 NNE	12 18 NNE	10 15 NNE	9 14 NNE	8 12 N	8 12 N	8 12 N	8 13 N	9 13 N	8 12 N	8 11 N	8 11 N	7 11 NNE	7 11 NNE	
<b>Kinder 1</b>	4 11 NE	4 11 ENE	5 11 ENE	4 13 ENE	4 13 ENE	6 16 ENE	6 12 ENE	5 10 ENE	5 9 E	5 8 E	6 6 E	6 5 ESE	5 5 ESE	9 15 E	9 14 E	9 15 E	10 14 ENE	9 14 NE	9 14 NNE	9 14 NNE	10 15 NNE	11 17 NNE	10 15 NNE	9 14 NNE	8 12 N	8 12 N	8 12 N	8 13 N	9 13 N	8 12 N	8 11 N	8 11 N	8 11 N	7 11 ENE	7 11 ENE		
<b>Greens Bayou</b>	4 10 NE	4 11 ENE	5 12 ENE	4 11 ENE	4 13 ENE	6 12 ENE	6 11 ENE	6 10 ENE	5 9 E	5 8 E	6 10 E	5 11 ESE	5 12 ESE	9 14 E	9 14 E	9 15 E	10 14 ENE	9 14 NE	9 14 NNE	9 14 NNE	10 16 NNE	11 17 NNE	10 16 NNE	11 16 NNE	9 14 NNE	8 12 N	8 12 N	8 12 N	8 13 N	9 13 N	8 12 N	8 11 N	8 11 N	8 11 N	8 11 SSE	8 11 SSE	
<b>Shell Crude</b>	4 10 NE	4 11 ENE	5 12 ENE	4 11 ENE	4 12 ENE	5 12 ENE	6 11 ENE	6 11 ENE	5 9 E	5 8 E	6 10 E	5 11 ESE	4 13 ESE	4 14 ESE	9 15 E	9 16 E	10 16 ENE	9 14 NE	9 14 NNE	10 14 NNE	11 16 NNE	11 16 NNE	11 16 NNE	10 14 NNE	9 12 NNE	8 12 NNE	8 12 N	8 12 N	9 13 N	9 12 N	9 12 N	9 11 N	9 11 N	8 11 N	8 11 WNW	8 11 WNW	
<b>Lynchburg Ferries</b>	3 10 NE	4 10 ENE	4 12 ENE	4 11 ENE	4 12 ENE	5 12 ENE	6 11 ENE	6 11 ENE	5 9 E	4 7 E	5 8 E	5 11 E	5 12 ESE	4 12 SE	4 13 E	9 15 E	10 16 ENE	10 14 NE	10 14 NNE	10 15 NNE	11 16 NNE	11 16 NNE	11 16 NNE	10 14 NNE	9 13 NNE	8 12 N	8 12 N	8 12 N	9 13 N	9 12 N	9 12 N	9 12 N	9 11 N	9 11 N	8 11 NW	8 11 NW	
<b>Exxon 3</b>	3 11 NE	4 11 ENE	5 13 ENE	4 12 ENE	4 13 ENE	6 13 ENE	6 11 ENE	6 11 ENE	5 9 E	5 7 E	5 10 E	5 11 E	4 12 ESE	5 14 ESE	5 13 E	10 15 ENE	11 16 ENE	10 14 NE	10 14 NNE	10 15 NNE	12 16 NNE	12 16 NNE	12 16 NNE	12 16 NNE	10 14 NNE	9 13 NNE	9 12 N	9 12 N	9 12 N	9 13 N	9 12 N	9 12 N	9 11 N	9 11 N	9 11 NW	9 11 NW	
<b>Morgans Point</b>	6 13 NE	6 13 ENE	7 15 ENE	7 13 ENE	7 13 ENE	7 13 ENE	7 11 ENE	7 12 ENE	6 10 E	6 9 E	6 10 E	6 11 E	6 13 ESE	8 16 ESE	8 15 E	12 16 ENE	13 17 ENE	11 15 NE	11 14 NNE	11 15 NNE	12 17 NNE	13 17 NNE	13 17 NNE	13 17 NNE	12 16 NNE	11 14 NNE	10 13 NNE	10 13 N	10 13 N	10 13 N	10 13 N	9 12 N	9 12 N	9 12 N	9 12 NW	9 12 NW	
<b>75/76</b>	12 14 ENE	12 14 ENE	13 16 ENE	13 15 ENE	11 14 ENE	11 12 ENE	10 12 ENE	9 11 ENE	8 10 E	8 10 E	7 8 E	8 10 E	12 15 ESE	15 18 ESE	16 18 E	16 18 ENE	16 18 ENE	16 16 ENE	16 16 NNE	16 18 NNE	17 19 NNE	17 20 NNE	17 20 NNE	17 20 NNE	16 18 NNE	14 16 NNE	14 16 NNE	15 16 NNE	15 16 NNE	14 15 NNE	14 14 NNE	14 14 NNE	14 14 NNE	13 13 NNE	13 13 SSE	13 13 SSE	
<b>63/64</b>	13 16 ENE	13 16 ENE	14 17 ENE	13 16 ENE	12 14 ENE	11 13 ENE	11 12 ENE	11 11 ENE	7 8 E	8 10 E	9 11 E	10 12 E	16 13 E	16 16 E	17 17 E	17 17 E	16 16 ENE	16 16 ENE	16 16 NNE	18 19 NNE	19 20 NNE	20 22 NNE	20 22 NNE	20 22 NNE	18 17 NNE	17 16 NNE	16 15 NNE	16 15 NNE	15 14 NNE	15 14 NNE	14 13 NNE	14 13 NNE	14 13 NNE	14 14 NNE	13 13 NE	13 13 E	
<b>51/52</b>	13 15 ENE	12 15 ENE	13 16 ENE	13 16 ENE	12 14 ENE	11 13 ENE	11 12 ENE	10 11 ENE	8 10 E	7 9 E	7 11 E	12 15 E	16 19 E	16 18 E	17 19 E	17 18 E	16 17 ENE	15 17 ENE	15 17 NNE	18 19 NNE	18 20 NNE	20 22 NNE	20 22 NNE	20 22 NNE	18 17 NNE	16 15 NNE	16 15 NNE	15 14 NNE	15 14 NNE	14 13 NNE	14 13 NNE	14 13 NNE	14 14 NNE	13 13 ENE	12 12 W	14 13 W	
<b>37/38</b>	12 14 NE	12 14 ENE	13 15 ENE	12 14 ENE	11 14 ENE	12 14 ENE	12 13 ENE	10 12 ENE	9 11 E	8 11 E	11 12 E	12 12 E	13 16 E	16 18 E	16 18 E	16 18 ENE	16 18 ENE	16 18 ENE	15 17 NNE	15 17 NNE	17 19 NNE	18 20 NNE	18 20 NNE	18 20 NNE	18 17 NNE	15 14 NNE	15 14 NNE	15 14 NNE	14 13 NNE	14 13 NNE	14 13 NNE	14 13 NNE	14 13 NNE	13 12 SSE	12 12 N	12 12 N	
<b>25/26</b>	11 14 NE	11 14 ENE	11 15 ENE	11 14 ENE	11 14 ENE	12 14 ENE	12 13 ENE	11 12 ENE	10 11 E	10 10 E	10 12 E	12 12 E	12 15 E	16 18 E	16 18 E	16 18 ENE	15 18 ENE	15 18 ENE	15 18 ENE	15 19 NNE	16 19 NNE	16 21 NNE	18 22 NNE	18 21 NNE	18 17 NNE	16 16 NNE	16 16 NNE	16 16 NNE	15 16 NNE	15 16 NNE	14 14 NNE	14 14 NNE	14 14 NNE	14 14 NNE	14 14 NNE	13 13 SW	12 12 SW
<b>11/12</b>	11 14 NE	11 14 ENE	12 15 ENE	12 15 ENE	12 14 ENE	12 13 ENE	12 13 ENE	12 12 ENE	13 13 E	12 13 E	13 13 E	13 15 E	16 19 E	16 18 E	16 18 E	16 18 ENE	16 18 ENE	15 18 ENE	15 18 NNE	15 18 NNE	16 19 NNE	16 18 NNE	18 21 NNE	18 19 NNE	18 17 NNE	15 14 NNE	14 14 NNE	14 14 NNE	14 14 NNE	14 14 NNE	14 14 NNE	14 13 NNE	14 13 NNE	13 12 SSE	11 11 SSE	11 11 SSE	
<b>1 &amp; 2 Bravo</b>	14 15 ENE	14 15 ENE	15 16 ENE	14 15 ENE	14 16 ENE	16 17 ENE	16 16 ENE	15 15 ENE	14 15 ENE	14 15 ENE	14 15 ENE	15 17 E	16 19 E	16 20 E	20 22 E	20 22 E	20 22 ENE	19 18 ENE	16 19 ENE	16 19 NNE	20 22 NNE	20 22 NNE	22 24 NNE	22 22 NNE	22 22 NNE	18 18 NNE	18 17 NNE	18 17 NNE	17 17 NNE	17 16 NNE	17 16 NNE	16 16 NNE	16 14 NNE	14 13 NNE	14 13 NNE	12 12 W	12 12 W

NOTE: This is automated data that may/may not agree with the official BAM thinking that's found on the daily slides or special visibility report slides. This data should be used as a guide only

# Houston Pilots: Tue. 01/02/2024



## Forecast Discussion

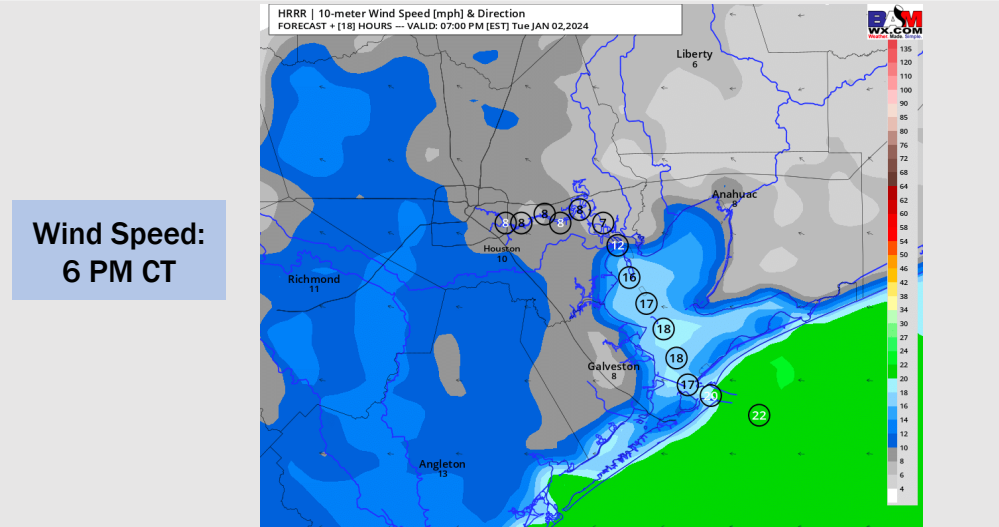
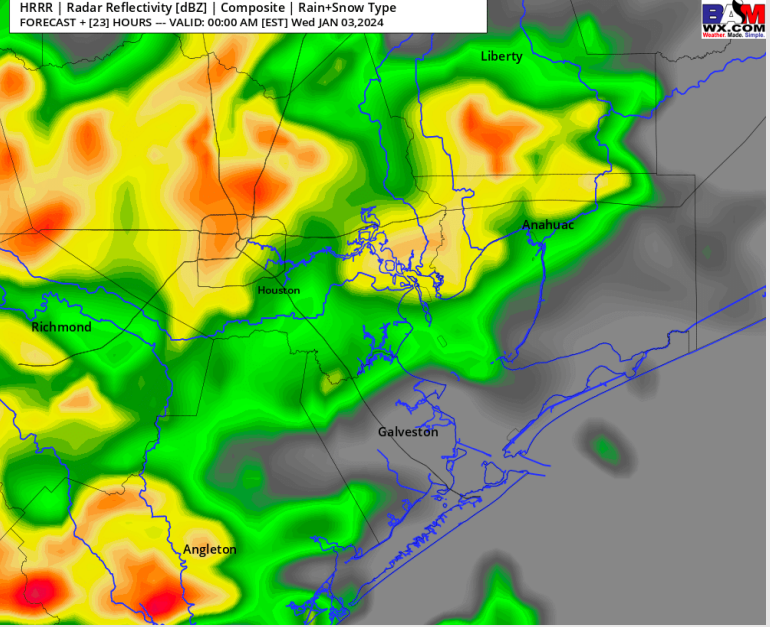
**Precip:** Dry conditions for the morning and early-mid afternoon. Scattered showers will then build in from the SW near 5 PM as a light drizzle, although some dry air at the low levels will keep the risk for start times closer to 7 PM. Better coverage will finally move in towards 10 PM into the overnight.

**Wind:** Winds out of the E/ENE throughout the day. Winds will begin to flip from the NNW right towards midnight as the front approaches. **N of Morgan's Point:** 4-9 kts through 2 PM, increasing to 6 - 11 kts towards 5 PM with the arrival of rain. **S of Morgan's Point:** 8-13 kts before 6 PM, increasing to 11-16 kts at that time. 15-20 kts winds at the Boarding Station. Watch for winds to slightly increase to 17 - 22 kts near 8 PM. **Wind gusts of up to 24 kts will be possible across all stations starting towards 7 PM ahead of the front.**

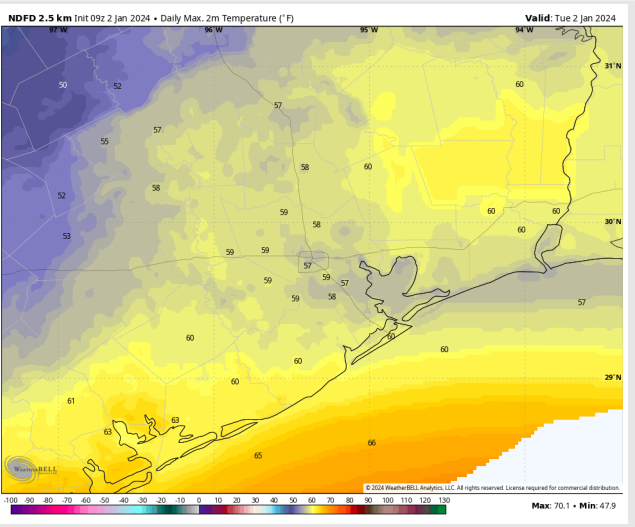
**High Temps:** **N of Morgan's Point:** Upper 50s F **S of Morgan's Point:** Upper 50s F. Near 60 at the Boarding Station.

**Visibility:** No visibility concerns for Tuesday. Downpours can cause visibility to drop to ~2 miles at times in the early AM Wednesday.

## Precip Image: 11 PM CT



**Wind Speed:  
6 PM CT**



**High Temps  
Tuesday**

## Forecast Discussion

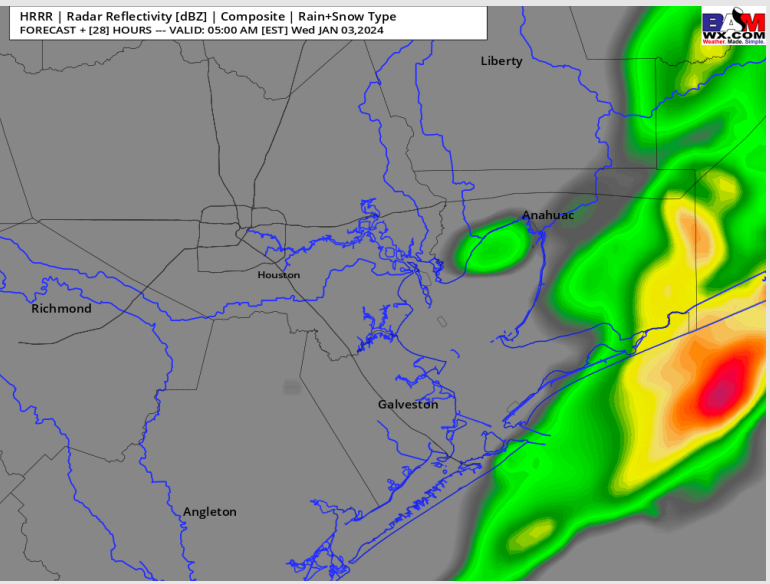
**Precip:** Scattered showers continue through 4 AM. From roughly 4 - 6 AM coverage tapers off to drizzle, with dry conditions thereafter.

**Wind:** Winds will be shifting from 10 PM (TUE PM) through ~3 AM from ENE to NNE. Sustained NNE winds favored by 6 AM. **N Morgan's Point:** 7-12 kt winds will calm to 5-10 kts by 5 AM. Towards sunset winds calm more to 3-7 kts. **S of Morgan's Point:** 11-16 kt winds will decrease to 7-12 kts by 10 AM. 17-22 kt winds at the Boarding Station are favored. From 2 - 5 AM there can be a moment of winds increasing to 20-25 kts at the Boarding Station. Winds near 1 PM calm to 10-15 kts for the afternoon. **Gusts to 24 kts prior to 3 AM possible North of 25/26 with gusts up to 28 kts at 11/12 and the Boarding Station.**

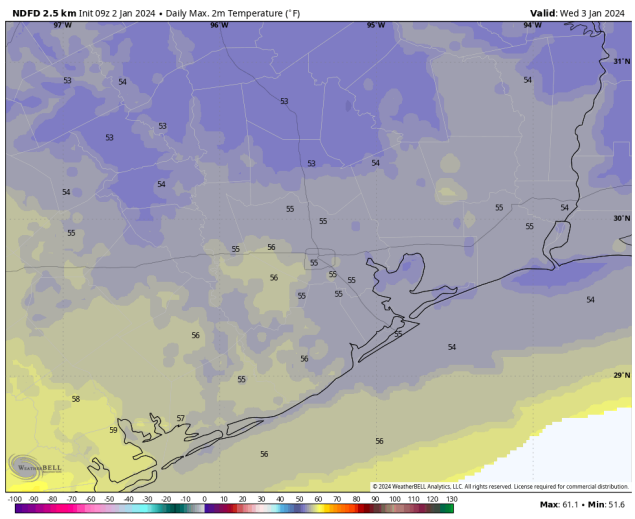
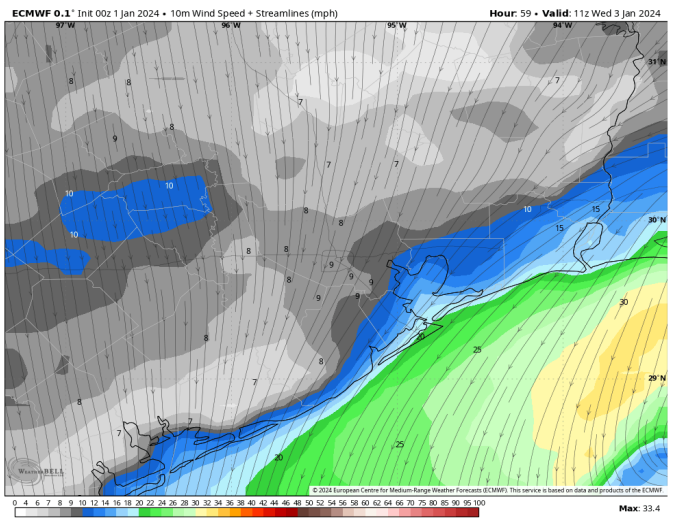
**High Temps:** **N of Morgan's Point:** Mid 50s F. **S of Morgan's Point:** Mid 50s F

**Visibility:** Not anticipating any fog concerns. Downpours can reduce visibilities to ~2 miles.

## Precip Image: 4 AM CT



**Wind Speed:  
5 AM CT**



**High Temps  
Wednesday**

# Houston Pilots: Thu. 01/04/2024



## Forecast Discussion

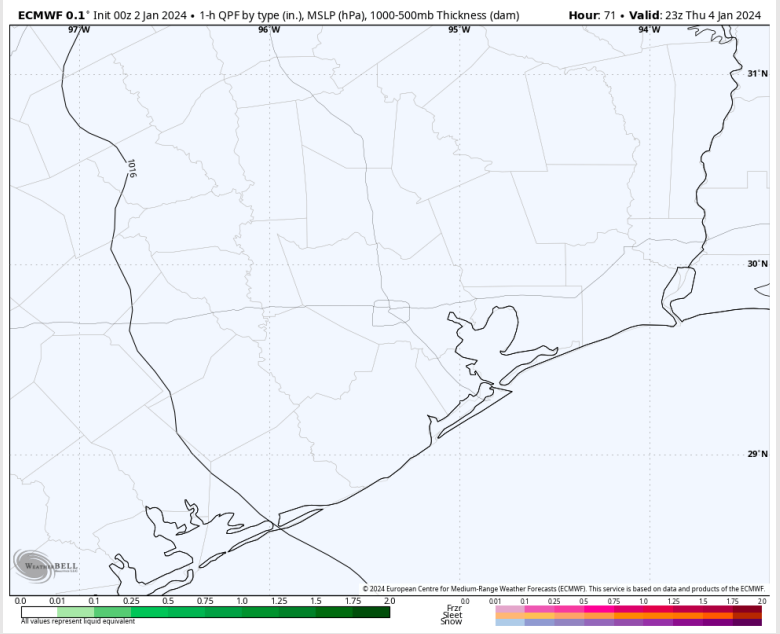
**Precip:** Dry Conditions are favored for Thursday.

**Wind:** Winds will rotate ~110 degrees clockwise from the N to ESE. Winds would be from the E by 12 PM and ESE by 4 PM. **N Morgan's Point:** 3 - 7 kits prior to 12 PM, increasing to 6 - 11 kts thereafter. **S of Morgan's Point:** 4 - 9 kts through 8 AM, increasing to 9 - 14 kts by 2 PM. Winds at the Boarding Station a touch higher at 11 - 16 kts by 2 PM.

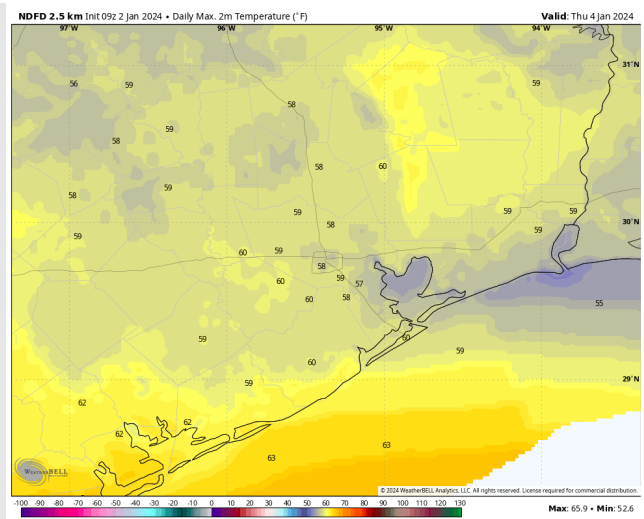
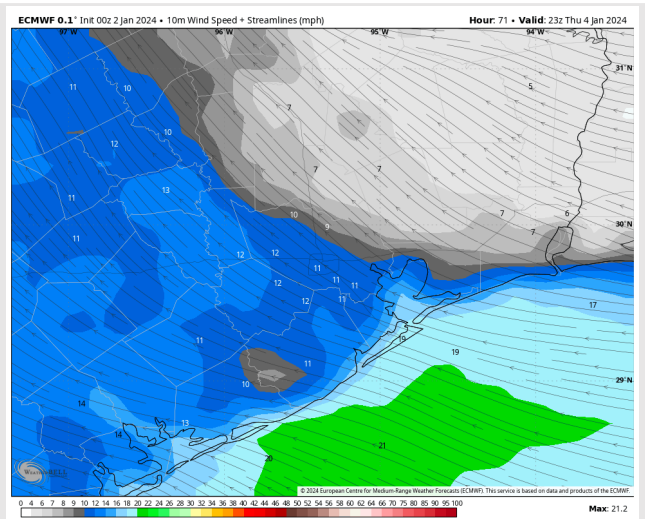
**High Temps:** **N of Morgan's Point:** Mid to upper 50s F. **S of Morgan's Point:** Mid 50s F. Upper 50s F at the Boarding Station.

**Visibility:** While fog is not favored, it would be worth monitoring Thursday AM as there will be a stable airmass overhead. Question will be how much the low levels can dry out from previous rains on Wednesday.

## Precip Image: 5 PM CT

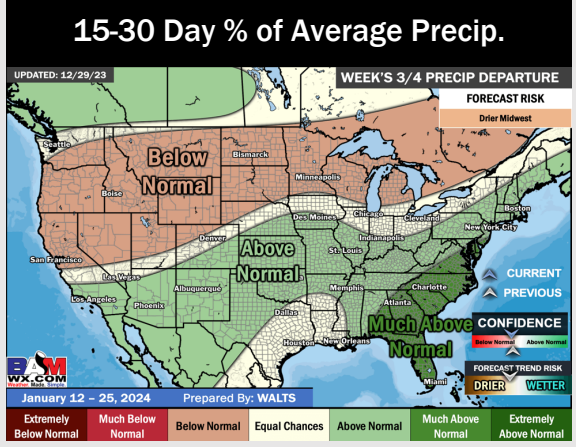
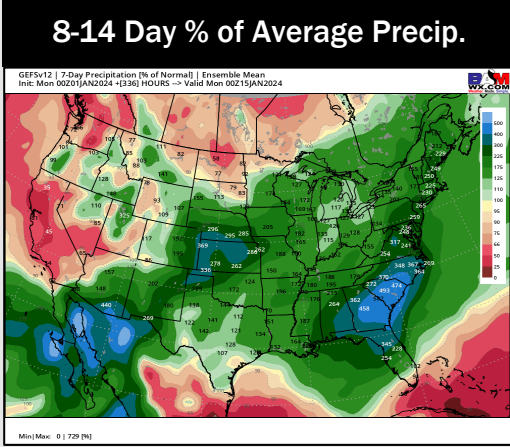
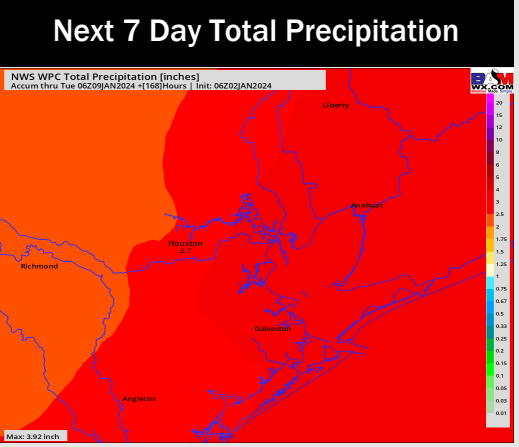
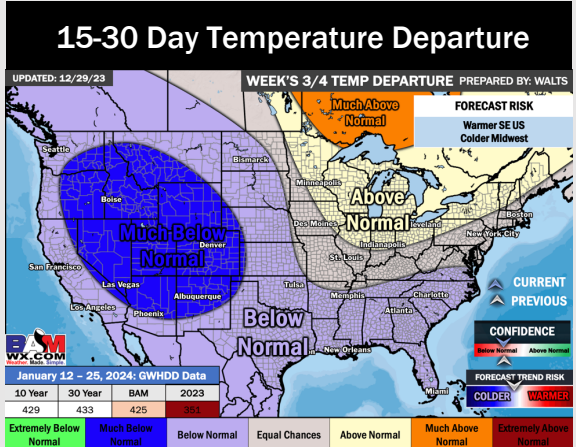
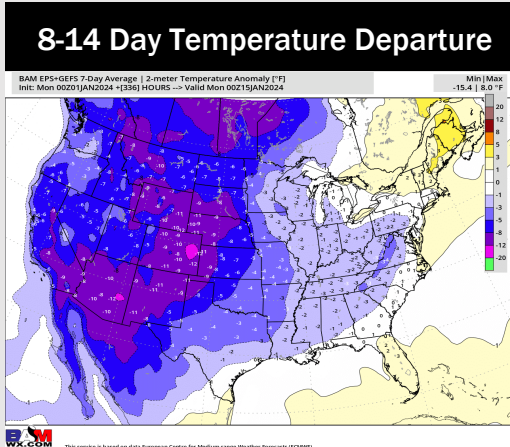
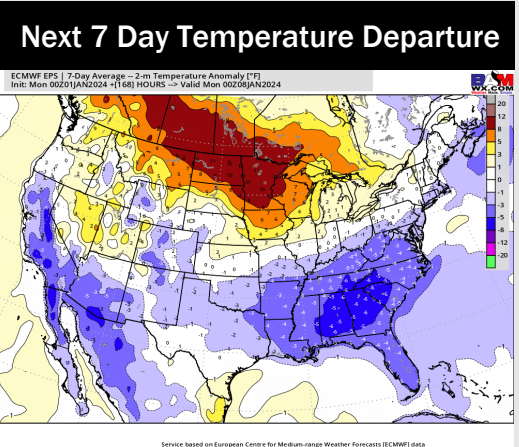


Wind Speed:  
5 PM CT



High Temps  
Thursday

# Houston Pilots: 1/2/24



- With exiting rains WED AM, the next wave of rain showers will enter near early Friday AM. Seasonable temperatures anticipated this week.
- Cooler temperatures and above normal rainfall is favored for the week 2 timeframe
- Below normal temperatures and seasonal chances for precipitation are favored in the weeks 3/4 timeframe.