

# Houston Pilots Forecast Package



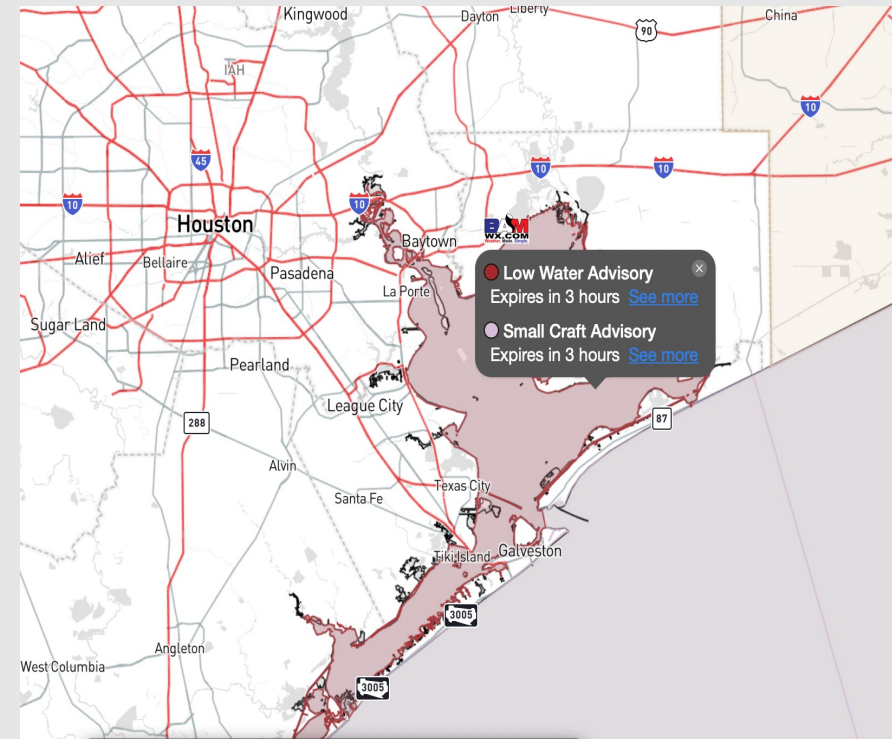
Updated: 2:30 PM CT

Tuesday, January 9, 2024

Forecaster: Vince Bryan

## Weather Headlines

- Watching for hit and miss rain chances Thursday with a cold front working through the area Friday AM
- Winds will continue to die down over the coming hours, more details on Day 1 slide.
- Waves will continue to subside over the coming hours as well. No threat of 5 - 6' waves this evening.
- Sea fog threat looks limited over the coming days.



**Radar/NWS Alerts: 2:15 PM CT**



As always, please do not hesitate to reach out to us with any forecast questions via the chat option on the Weather Porthole or our on-call number, **(317)-560-8122** press 1 for forecast questions.

# Houston Pilots Extended Range Visibility Report



## Friday 1/12/24

No fog concerns for Friday, but reduced visibilities possible under heaviest storms.



## Saturday 1/13/24

No visibility concerns for Saturday.



## Sunday 1/14/24

No visibility concerns for Sunday.



## Chance for Fog

Friday AM	Unlikely
Friday PM	Unlikely
Saturday AM	Unlikely
Saturday PM	Unlikely
Sunday AM	Unlikely
Sunday PM	Unlikely

# Houston Pilots Visibility Chart (miles)



Time Knots	Tue 1pm	Tue 2pm	Tue 3pm	Tue 4pm	Tue 5pm	Tue 6pm	Tue 7pm	Tue 8pm	Tue 9pm	Tue 10pm	Tue 11pm	Wed 12am	Wed 1am	Wed 2am	Wed 3am	Wed 4am	Wed 5am	Wed 6am	Wed 7am	Wed 8am	Wed 9am	Wed 10am	Wed 11am	Wed 12pm	Wed 1pm	Wed 2pm	Wed 3pm	Wed 4pm	Wed 5pm	Wed 6pm	Wed 7pm	Wed 8pm	Wed 9pm	Wed 10pm	Wed 11pm	Thu 12am			
610 Bridge	19	18	18	17	13	9	7	5	4	3	3	3	3	2	2	2	3	3	3	4	5	7	8	10	12	10	11	10	11	11	9	8	7	6	5	5	4	4	
	29	27	27	25	20	14	11	8	6	5	5	5	4	4	4	3	3	4	5	6	8	10	12	15	16	16	17	16	14	12	11	9	8	7	6	5	5	4	4
Kinder 1	19	18	18	16	13	9	7	5	4	3	3	3	2	2	2	3	3	3	4	5	6	8	10	12	15	16	16	16	14	12	11	9	8	7	6	5	5	4	4
	29	27	27	25	20	14	11	8	6	5	5	5	4	4	3	3	4	5	6	8	10	12	15	16	16	16	14	12	11	9	8	7	6	5	5	4	4	4	
Greens Bayou	18	18	18	16	13	9	7	5	4	3	3	4	3	2	2	2	3	3	4	5	6	8	9	10	10	10	11	10	9	7	7	6	5	5	4	4	4	4	
	28	27	27	24	20	14	11	8	6	5	5	5	4	3	3	3	4	5	6	8	9	12	15	16	16	16	15	14	11	10	9	8	7	6	5	5	4	4	
Shell Crude	18	18	17	16	13	9	7	5	4	3	3	4	3	2	2	2	3	3	3	4	5	7	8	9	10	10	10	11	10	9	7	7	6	5	5	4	4	4	
	28	27	26	24	19	14	11	8	6	6	5	5	5	4	4	4	4	5	6	8	9	12	15	15	15	16	16	15	14	11	10	9	8	7	6	5	5	4	4
Lynchburg Ferries	18	17	17	16	13	9	7	5	4	4	4	4	3	3	3	3	4	4	4	5	7	8	10	10	10	10	11	10	9	7	7	6	6	5	5	4	4	4	
	27	26	26	24	19	14	11	8	6	6	5	6	5	4	4	4	4	5	6	8	10	12	15	15	15	16	15	14	11	10	9	8	7	6	5	5	4	4	
Exxon 3	18	17	17	16	13	10	8	6	5	4	4	4	4	3	3	3	3	4	4	4	5	6	7	8	9	10	10	10	11	10	9	8	7	6	6	5	5	5	
	27	26	26	23	19	14	11	8	6	6	6	6	6	5	4	4	4	6	6	8	10	12	14	15	15	16	15	13	11	10	9	8	8	7	7	7	7	7	
Morgans Point	18	18	18	16	14	11	9	7	5	5	5	5	4	4	4	4	4	5	5	6	6	8	9	9	10	11	11	11	10	9	8	7	7	6	6	5	5	5	
	27	26	26	24	19	15	12	9	7	7	7	6	6	5	5	5	5	6	7	7	8	10	12	13	15	15	16	15	14	11	10	9	8	8	8	7	7	7	7
75/76	21	20	19	18	16	13	11	9	7	7	6	6	6	5	5	5	5	6	7	8	8	9	9	10	11	12	12	12	13	12	10	9	8	8	8	7	7	7	7
	28	27	26	24	20	16	13	11	8	8	7	7	6	5	5	5	6	7	8	9	9	10	12	14	15	15	16	16	14	12	11	10	9	8	8	8	7	7	7
63/64	23	21	20	18	17	14	12	10	8	7	6	6	6	5	4	4	5	6	7	8	9	9	10	10	11	12	12	12	12	10	9	8	8	8	8	7	7	7	7
	29	27	26	23	21	17	14	11	9	8	7	7	6	5	5	5	5	7	8	9	9	10	12	14	15	15	16	15	14	12	10	9	8	8	8	8	7	7	7
37/38	23	21	20	18	17	15	12	10	7	7	6	6	5	4	3	2	3	4	6	8	9	10	11	11	12	12	12	11	10	9	8	7	7	7	7	7	7	7	7
	28	25	24	22	20	17	15	12	9	8	7	7	6	5	4	4	3	4	5	7	9	10	11	13	14	15	15	14	12	11	10	9	8	8	8	8	8	8	8
25/26	22	20	19	17	16	13	12	9	7	6	6	5	5	4	3	2	3	4	6	7	8	10	11	11	11	11	11	10	9	8	8	7	6	7	7	7	7	6	6
	28	25	24	22	20	18	15	12	10	8	7	7	6	5	4	3	3	4	5	7	9	10	12	13	14	14	14	14	13	12	10	10	9	8	8	8	8	8	8
11/12	22	20	19	18	16	14	12	10	8	7	6	6	6	4	3	3	3	4	6	8	9	10	11	11	11	11	11	10	9	8	8	7	7	7	7	7	7	7	7
	28	25	24	23	21	18	16	13	11	9	8	7	7	5	4	4	4	5	7	9	10	12	13	14	14	13	14	13	12	10	10	9	9	9	9	9	9	8	8
1 & 2 Bravo	26	24	23	22	20	18	16	14	12	10	9	8	7	6	5	4	4	5	7	9	11	11	12	12	12	12	11	11	11	10	10	9	9	9	9	9	9	9	9
	29	27	26	25	23	20	18	15	13	12	10	9	8	7	6	4	5	6	8	10	11	12	13	13	13	13	13	13	12	12	11	10	10	10	10	10	10	10	10

NOTE: This Visibility covers the normal timeframe, however still experiencing a data issue for red outlined locations.

# Houston Pilots Wind Chart



## Forecast Confidence



Sustained wind 13 Knots  
Gusts 18 Knots  
Wind from the N

## Example

WS: 13  
G:18  
N

Time	Tue 1pm	Tue 2pm	Tue 3pm	Tue 4pm	Tue 5pm	Tue 6pm	Tue 7pm	Tue 8pm	Tue 9pm	Tue 10pm	Tue 11pm	Wed 12am	Wed 1am	Wed 2am	Wed 3am	Wed 4am	Wed 5am	Wed 6am	Wed 7am	Wed 8am	Wed 9am	Wed 10am	Wed 11am	Wed 12pm	Wed 1pm	Wed 2pm	Wed 3pm	Wed 4pm	Wed 5pm	Wed 6pm	Wed 7pm	Wed 8pm	Wed 9pm	Wed 10pm	Wed 11pm	Thu 12am	
610 Bridge	10	10	10	10	10	10	10	10	10	10	10	10	10	10	10	10	10	10	10	10	10	10	10	10	10	10	10	10	10	10	10	10	10	10	10	10	
Kinder 1	10	10	10	10	10	10	10	10	10	10	10	10	10	10	10	10	10	10	10	10	10	10	10	10	10	10	10	10	10	10	10	10	10	10	10	10	
Greens Bayou	10	10	10	10	10	10	10	10	10	10	10	10	10	10	10	10	10	10	10	10	10	10	10	10	10	10	10	10	10	10	10	10	10	10	10	10	
Shell Crude	10	10	10	10	10	10	10	10	10	10	10	10	10	10	10	10	10	10	10	10	10	10	10	10	10	10	10	10	10	10	10	10	10	10	10	10	
Lynchburg Ferries	10	10	10	10	10	10	10	10	10	10	10	10	10	10	10	10	10	10	10	10	10	10	10	10	10	10	10	10	10	10	10	10	10	10	10	10	
Exxon 3	10	10	10	10	10	10	10	10	10	10	10	10	10	10	10	10	10	10	10	10	10	10	10	10	10	10	10	10	10	10	10	10	10	10	10	10	
Morgans Point	10	10	10	10	10	10	10	10	10	10	10	10	10	10	10	10	10	10	10	10	10	10	10	10	10	10	10	10	10	10	10	10	10	10	10	10	
75/76	10	10	10	10	10	10	10	10	10	10	10	10	10	10	10	10	10	10	10	10	10	10	10	10	10	10	10	10	10	10	10	10	10	10	10	10	
63/64	10	10	10	10	10	10	10	10	10	10	10	10	10	10	10	10	10	10	10	10	10	10	10	10	10	10	10	10	10	10	10	10	10	10	10	10	
51/52		10	10	10	10	10	10	10	10	10	10	10	10	10	10	10	10	10	10	10	10	10	10	10	10	10	10	10	10	10	10	10	10	10	10	10	
37/38	10	10	10	10	10	10	10	10	10	10	10	10	10	10	10	10	10	10	10	10	10	10	10	10	10	10	10	10	10	10	10	10	10	10	10	10	
25/26	10	10	10	10	10	10	10	10	10	10	10	10	10	10	10	10	10	10	10	10	10	10	10	10	10	10	10	10	10	10	10	10	10	10	10	10	
11/12	10	10	10	10	10	10	10	10	10	10	10	10	10	10	10	10	10	10	10	10	10	10	10	10	10	10	10	10	10	10	10	10	10	10	10	10	
1 & 2 Bravo	10	10	10	10	10	10	10	10	10	10	10	10	10	10	10	10	10	10	10	10	10	10	10	10	10	10	10	10	10	10	10	10	10	10	10	9	9

**NOTE:** This wind chart covers the normal timeframe, however still experiencing a data issue for red outlined locations. For more information regarding winds today, please view the Day 1 Slide.

## Forecast Discussion

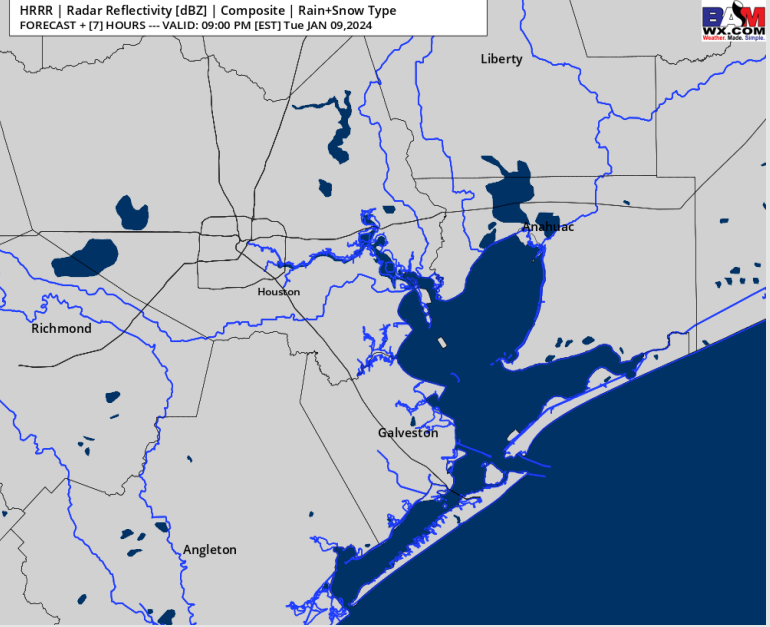
**Precip:** Dry conditions favored through tonight.

**Wind:** Winds out of the NW through midnight before shifting out of the South. **N Morgan's Point:** 8-13 knots through 6 PM before dying down to 3-8 knots. **S of Morgan's Point:** Winds will be 15-20 knots through 9 PM with gusts 18-23 possible (locally higher at boarding station). After 9 PM, winds are 8-13 knots.

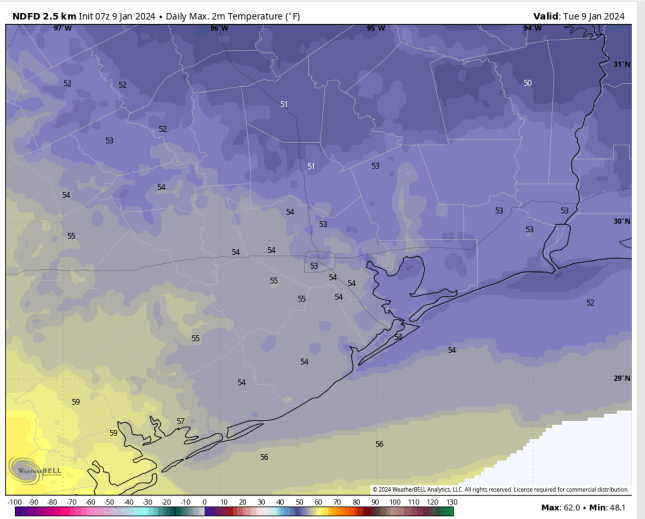
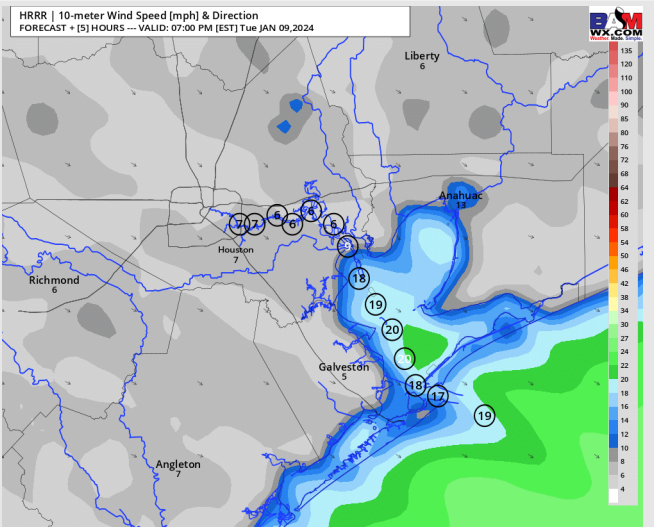
**Low Temps:** **N of Morgan's Point:** Mid 50s F. **S of Morgan's Point:** Mid 50s F.

**Visibility:** Not anticipating any visibility concerns.

## Precip Image: 8 PM CT



**Wind Speed:  
7 PM CT**



**Low Temps  
Overnight**

# Houston Pilots: Wed. 01/10/2024



## Forecast Discussion

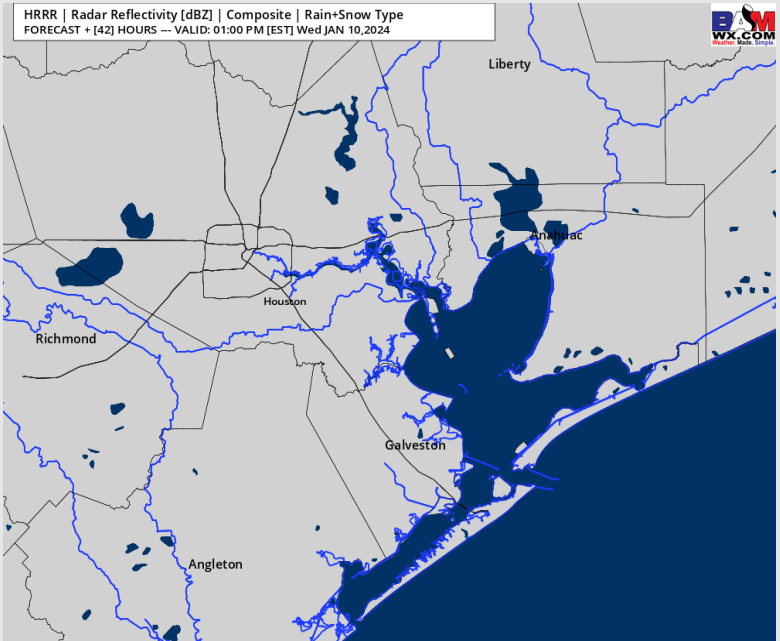
**Precip:** Favoring dry conditions for Wednesday.

**Wind:** Winds out of the WSW will veer out of the SSW by 7 AM. **N Morgan's Point:** 1-5 kts through the AM, increasing to 6-11 kts near 11 AM. Winds will then decrease to 3-8 kts by 6 PM. **S of Morgan's Point:** 4-9 kts through majority of the AM, increasing to 7-12 kts by 2 PM.

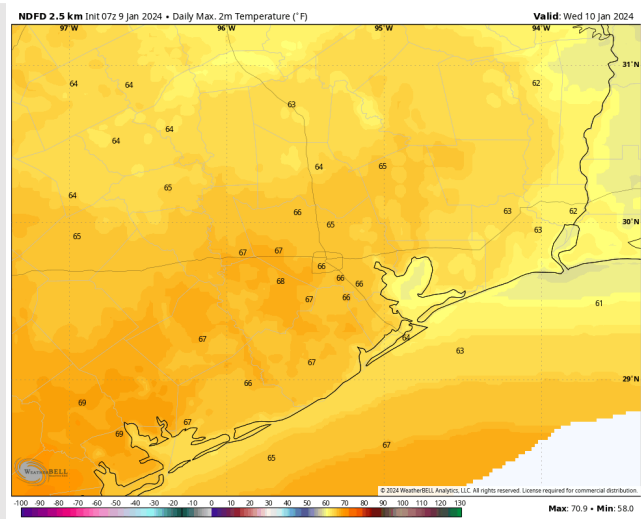
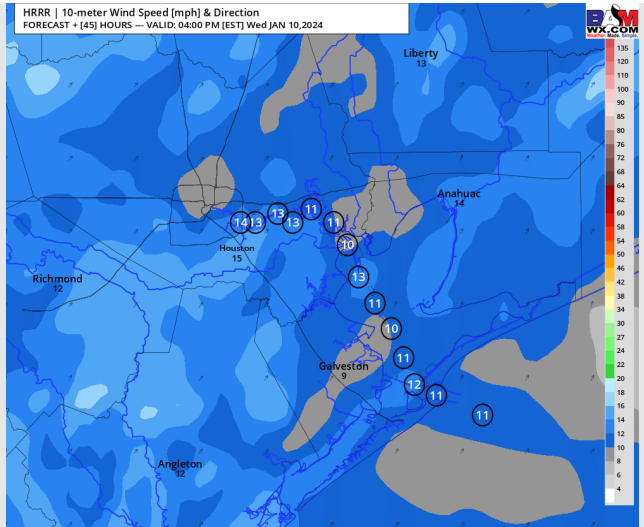
**High Temps:** **N of Morgan's Point:** Mid 60s F. **S of Morgan's Point:** Low/Mid 60s F.

**Visibility:** No visibility concerns for Wednesday.

## Precip Image: 12 PM CT



Wind Speed:  
3 PM CT



High Temps  
Wednesday

# Houston Pilots: Thu. 01/11/2024



## Forecast Discussion

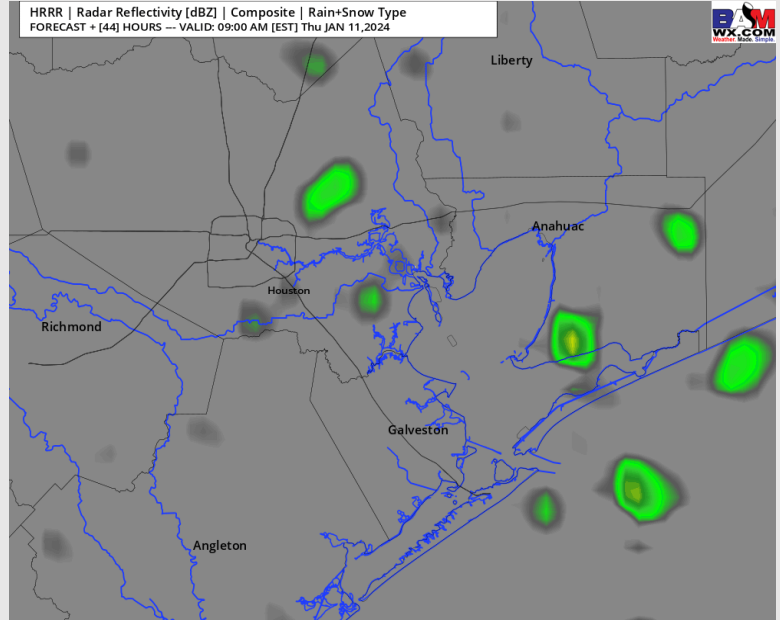
**Precip:** Favoring a dry early morning with hit and miss pockets of light showers starting as early as 8 AM. Expecting light showers to taper off by mid afternoon.

**Wind:** Winds will be out of the S through 8 AM before veering out of the SSW the rest of THU. **N of Morgan's Point:** Winds at 5-10 kts through 10 AM before increasing to 12-17 kts. Winds decrease to 10-15 kts after 5 PM. **S of Morgan's Point:** Winds at 8-13 kts through 9 AM then increase to 13-18 kts the rest of the day.

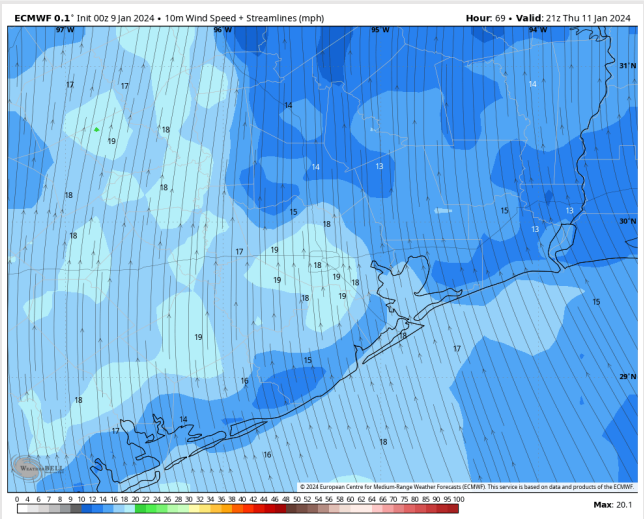
**High Temps:** **N of Morgan's Point:** Low 70s F **S of Morgan's Point:** Mid 60s F

**Visibility:** No visibility concerns for THU.

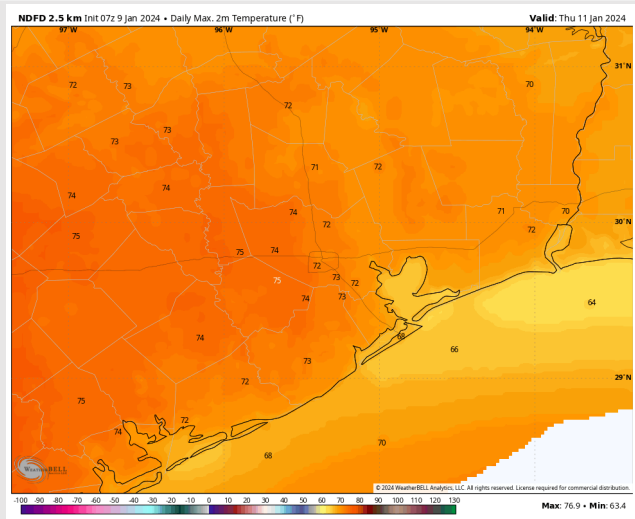
## Precip Image: 8 AM CT



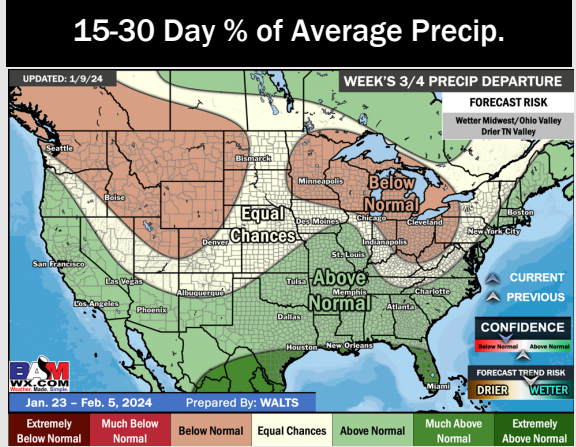
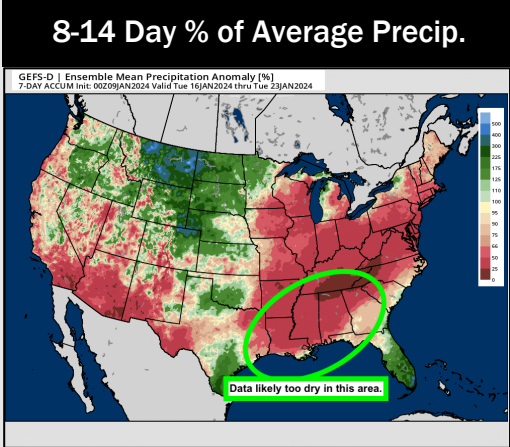
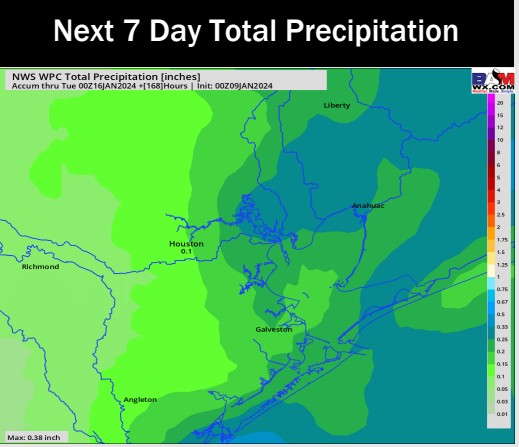
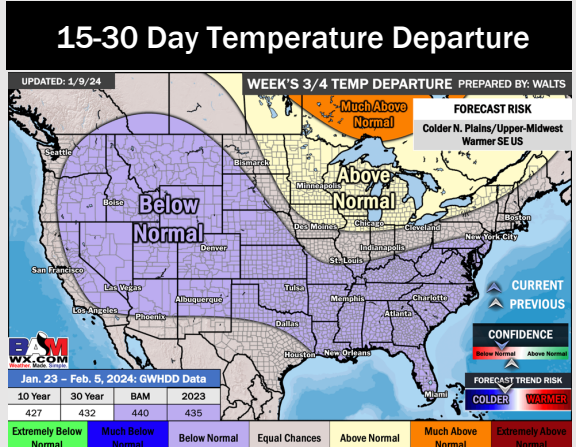
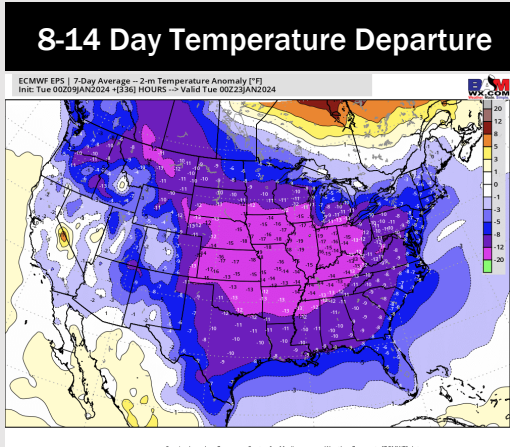
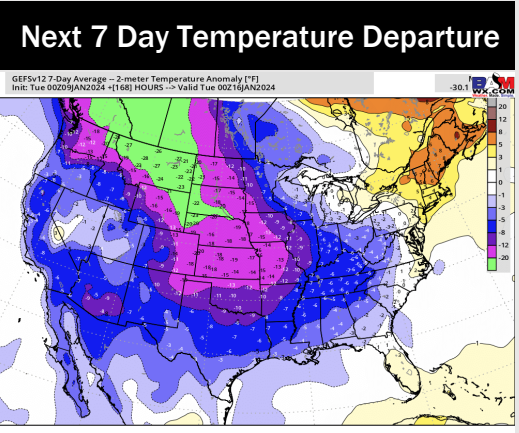
Wind Speeds:  
3 PM CT



High Temps  
Thursday



# Houston Pilots: 1/9/24



- Next opportunities for rain will be Thursday/Friday. Seasonable to slightly below normal temperatures for next week.
- Seasonable precip. chances are expected for the week 2 timeframe. Temps expected to be below normal.
- Below normal temperatures and seasonal to above normal chances for precipitation are favored in the weeks 3/4 timeframe.