

Houston Pilots Forecast Package



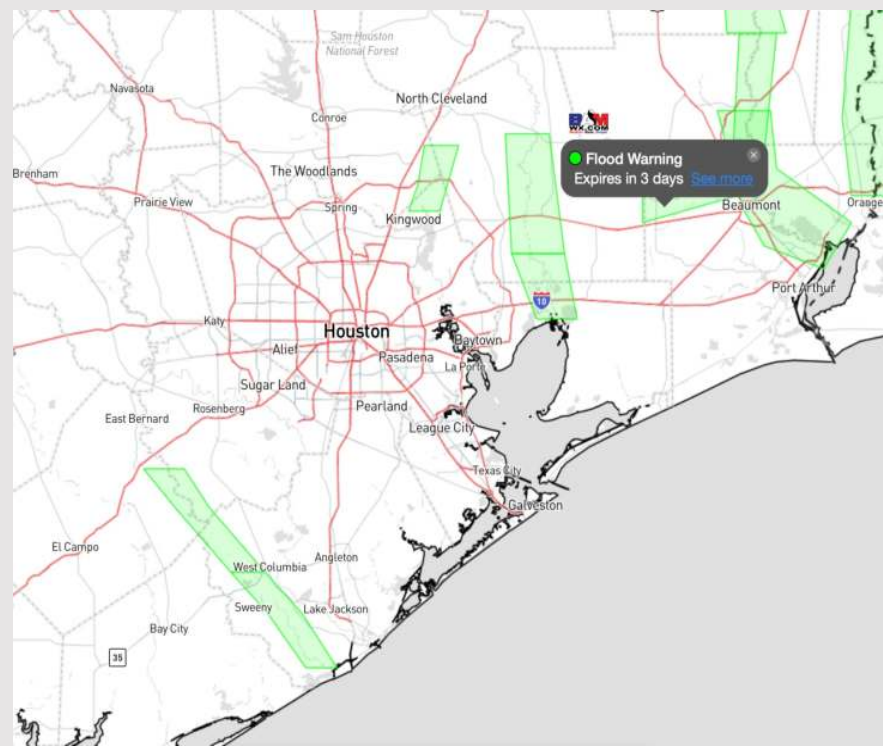
Updated: 12:20 AM CT

Tuesday, January 30, 2024

Forecaster: Jonathan Kipper

Weather Headlines

- A dry stretch is in store through Wednesday. Drizzle chances will enter on Thursday with better chances for accumulating precip through the weekend.
- Winds to remain rather calm over the next few days.
- Not anticipating a fog risk over the next couple of days. Need to watch Thursday AM for a low end risk.



Radar/NWS Alerts: 12:10 AM CT



As always, please do not hesitate to reach out to us with any forecast questions via the chat option on the Weather Porthole or our on-call number, **(317)-560-8122** press 1 for forecast questions.

Houston Pilots Extended Range Visibility Report



Friday 2/2/24

No visibility concerns favored for Friday

Forecast Confidence



Sunday 2/4/24

Lower confidence due to exit timing of rain SAT PM, but patchy fog will be possible behind heavy rain SUN AM

Forecast Confidence



Saturday 2/3/24

Periods of moderate to heavy rainfall can reduce visibilities throughout SAT (lower confidence on exact start timing). A few instances of patchy fog mixing in cannot be ruled out.

Forecast Confidence



Chance for Fog

Friday AM	Unlikely
Friday PM	Unlikely
Saturday AM	Possible
Saturday PM	Possible
Sunday AM	Possible
Sunday PM	Unlikely

Houston Pilots Visibility Chart (miles)



Time	Tue 12am	Tue 1am	Tue 2am	Tue 3am	Tue 4am	Tue 5am	Tue 6am	Tue 7am	Tue 8am	Tue 9am	Tue 10am	Tue 11am	Tue 12pm	Tue 1pm	Tue 2pm	Tue 3pm	Tue 4pm	Tue 5pm	Tue 6pm	Tue 7pm	Tue 8pm	Tue 9pm	Tue 10pm	Tue 11pm	Wed 12am	Wed 1am	Wed 2am	Wed 3am	Wed 4am	Wed 5am	Wed 6am	Wed 7am	Wed 8am	Wed 9am	Wed 10am	Wed 11am	
610 Bridge	10	10	10	10	10	10	10	10	10	10	10	10	10	10	10	10	10	10	10	10	10	10	10	10	10	10	10	7	6	0.48	0.42	0.42	0.24	0.24	7	10	10
Kinder 1	10	10	10	10	10	10	10	10	10	10	10	10	10	10	10	10	10	10	10	10	10	10	10	10	10	10	7	6	2	2	2	2	2	8	10	10	
Greens Bayou	10	10	10	10	10	10	10	10	10	10	10	10	10	10	10	10	10	10	10	10	10	10	10	10	10	10	8	6	5	5	5	4	5	9	10	10	
Shell Crude	10	10	10	10	10	10	10	10	10	10	10	10	10	10	10	10	10	10	10	10	10	10	10	10	10	10	9	8	8	9	9	8	8	10	10	10	
Lynchburg Ferries	10	10	10	10	10	10	10	10	10	10	10	10	10	10	10	10	10	10	10	10	10	10	10	10	10	10	9	9	8	8	9	9	8	8	10	10	10
Exxon 3	10	10	10	10	10	10	10	10	10	10	10	10	10	10	10	10	10	10	10	10	10	10	10	10	10	10	9	9	8	8	9	9	8	8	10	10	10
Morgans Point	10	10	10	10	10	10	10	10	10	10	10	10	10	10	10	10	10	10	10	10	10	10	10	10	10	10	9	9	8	8	9	9	8	8	10	10	10
75/76	10	10	10	10	10	10	10	10	10	10	10	10	10	10	10	10	10	10	10	10	10	10	10	10	10	10	9	9	8	8	9	9	8	8	10	10	10
63/64	10	10	10	10	10	10	10	10	10	10	10	10	10	10	10	10	10	10	10	10	10	10	10	10	10	10	9	9	8	8	9	9	8	8	10	10	10
51/52	10	10	10	10	10	10	10	10	10	10	10	10	10	10	10	10	10	10	10	10	10	10	10	10	10	10	9	8	8	9	9	8	8	9	10	10	
37/38	10	10	10	10	10	10	10	8	10	10	10	10	10	10	10	10	10	10	10	10	10	10	10	10	10	10	9	9	8	8	9	9	8	8	10	10	10
25/26	10	10	10	10	10	10	10	7	8	10	10	10	10	10	10	10	10	10	10	10	10	10	10	10	10	10	9	9	8	8	9	9	8	8	10	10	10
11/12	10	10	10	10	10	10	10	7	7	10	10	10	10	10	10	10	10	10	10	10	10	10	10	10	10	10	9	9	8	8	9	9	8	8	10	10	10
1 & 2 Bravo	10	10	10	10	10	8	7	6	7	10	10	10	10	10	10	10	10	10	10	10	10	10	9	9	9	9	9	8	8	9	9	8	10	10	10	9	

NOTE: This is automated data that may/may not agree with the official BAM thinking that's found on the daily slides or special visibility report slides. This data should be used as a guide only

Houston Pilots Wind Chart



Example

Sustained wind 13 Knots
Gusts 18 Knots
Wind from the N

WS: 13
G:18
N

Time Knots	Tue 12am	Tue 1am	Tue 2am	Tue 3am	Tue 4am	Tue 5am	Tue 6am	Tue 7am	Tue 8am	Tue 9am	Tue 10am	Tue 11am	Tue 12pm	Tue 1pm	Tue 2pm	Tue 3pm	Tue 4pm	Tue 5pm	Tue 6pm	Tue 7pm	Tue 8pm	Tue 9pm	Tue 10pm	Tue 11pm	Tue 12am	Wed 1am	Wed 2am	Wed 3am	Wed 4am	Wed 5am	Wed 6am	Wed 7am	Wed 8am	Wed 9am	Wed 10am	Wed 11am		
610 Bridge	4	4	3	3	3	3	3	4	4	4	5	6	6	6	6	6	5	5	4	4	4	3	4	3	4	4	4	4	4	4	3	3	3	3	4	4	4	
	7	6	5	5	5	5	5	5	5	7	8	8	9	8	9	8	9	8	7	6	6	5	5	5	6	6	6	6	6	6	5	4	4	4	6	6	6	
Kinder 1	SW	SW	WSW	WSW	WSW	WSW	WSW	WSW	W	W	W	W	W	W	W	W	W	W	WSW	WSW	WSW	SW	WSW	WSW	WSW	WSW	WSW	W	W	W	WNW	WNW	NW	NNW	SSE	NE	NE	ENE
	4	4	3	3	3	3	4	3	4	4	5	6	6	6	6	6	5	5	4	4	4	3	4	3	4	4	4	4	4	4	4	3	3	3	3	4	4	4
Greens Bayou	7	6	5	5	5	5	5	5	6	7	8	8	9	8	9	8	9	8	7	6	6	5	5	5	6	6	6	6	6	6	5	4	4	5	7	6	6	
	SW	SW	WSW	WSW	WSW	WSW	WSW	WSW	W	W	W	W	W	W	W	W	W	WSW	WSW	WSW	WSW	WSW	WSW	WSW	WSW	WSW	WSW	W	W	W	WNW	WNW	NW	NNW	SE	NE	NE	ENE
Shell Crude	4	4	3	3	3	3	4	4	4	4	5	6	6	6	6	6	5	5	4	4	4	4	3	4	4	4	4	4	4	4	3	3	3	3	4	4	4	
	7	6	5	5	5	5	6	6	6	7	7	8	9	8	9	8	9	8	7	6	6	5	6	5	6	6	6	6	6	6	5	5	5	5	7	6	6	
Lynchburg Ferries	SW	SW	WSW	WSW	WSW	WSW	W	W	W	W	W	W	W	W	W	W	W	WSW	WSW	WSW	WSW	WSW	WSW	WSW	WSW	WSW	W	W	W	WNW	WNW	NW	NNW	ENE	NE	NE	ENE	
	4	4	4	3	3	3	4	4	4	5	5	6	6	6	6	6	6	5	4	4	4	4	4	4	4	4	4	4	4	4	4	4	3	3	3	4	5	4
Exxon 3	7	6	5	5	5	5	6	6	6	7	7	8	9	9	9	8	9	8	7	6	6	6	6	6	6	6	6	6	6	6	6	5	5	5	7	6	5	
	SW	SW	WSW	WSW	WSW	WSW	W	W	W	W	W	W	W	W	W	W	WSW	WSW	WSW	WSW	WSW	WSW	WSW	WSW	WSW	WSW	W	W	W	WNW	WNW	NW	NNW	ENE	NE	NE	ENE	
Morgans Point	5	5	4	4	4	4	4	5	5	5	5	6	6	6	6	6	6	5	5	5	5	5	5	5	5	5	5	5	5	5	5	5	4	5	5	5		
	7	6	6	5	6	6	6	6	7	7	8	8	9	9	9	8	8	7	7	7	7	6	5	5	5	5	5	5	5	5	5	5	6	7	6	6		
75/76	SW	SW	WSW	WSW	WSW	W	W	W	W	W	W	W	W	W	W	WSW	WSW	WSW	SW	SW	SW	SW	WSW	WSW	WSW	WSW	W	W	W	WNW	NW	NNW	E	NNE	NE	ENE		
	6	6	5	4	5	5	5	6	6	6	6	6	6	6	6	6	7	7	7	7	6	7	7	7	7	7	6	6	6	6	6	6	5	6	5	4		
63/64	7	7	6	5	6	6	6	6	7	7	8	8	9	9	9	8	8	7	7	7	7	7	8	7	7	7	7	7	7	7	7	7	7	6	7	7	7	
	SW	SW	WSW	WSW	WSW	W	W	W	W	W	W	W	WSW	WSW	SW	SW	SW	SW	SW	SW	SW	WSW	WSW	WSW	WSW	WSW	W	W	W	WNW	WNW	NW	NNW	W	NNE	NE	NE	
51/52	5	5	4	4	4	4	4	5	6	6	5	5	5	5	6	6	6	7	7	7	7	6	6	7	7	7	7	7	7	7	6	6	6	6	6	5	5	
	SW	SW	WSW	WSW	WSW	W	W	W	W	W	W	W	WSW	SW	SW	SW	SW	SW	SW	SW	SW	WSW	WSW	WSW	WSW	WSW	W	W	W	WNW	WNW	NW	NNW	NW	NNE	NE	NE	
37/38	5	4	4	4	3	4	4	4	6	6	6	5	5	5	5	6	6	7	7	6	6	5	6	6	6	6	6	6	6	6	5	6	6	6	5	5		
	SW	WSW	WSW	WSW	WSW	W	W	W	W	W	W	W	WSW	SW	SW	SW	SW	SW	SW	SW	SW	SW	WSW	WSW	WSW	WSW	W	W	W	WNW	NNW	NW	NNW	N	NNE	NE	NE	
25/26	5	4	3	3	3	3	3	4	5	5	6	5	6	5	6	6	7	7	6	6	5	5	5	6	6	6	5	5	5	5	5	5	5	5	6	6		
	6	5	4	4	4	4	5	6	7	7	7	8	7	7	7	7	7	7	7	7	6	6	6	6	7	6	6	6	6	6	6	6	6	7	7	8	8	
11/12	SW	WSW	WSW	WSW	WSW	W	W	W	W	W	W	W	WSW	SW	SW	SW	SW	SW	SW	SW	SW	SW	WSW	WSW	WSW	WSW	W	W	W	WNW	NW	NNW	N	NNE	NE	NE		
	5	5	4	4	4	4	4	5	6	6	6	6	5	5	6	6	7	7	6	6	6	6	6	6	6	6	6	6	6	6	6	6	6	6	6	6		
1 & 2 Bravo	6	6	5	5	5	5	5	6	7	7	7	7	8	7	7	7	7	7	7	8	7	7	7	7	7	7	7	7	7	7	7	7	7	7	8	8	8	
	SW	WSW	WSW	WSW	WSW	W	W	W	W	W	W	W	WSW	SW	SW	SW	SW	SW	SW	SW	SW	SW	WSW	WSW	WSW	WSW	W	W	W	WNW	NW	NNW	NNW	NNE	NE	NE	NE	
	7	7	6	6	5	6	6	7	8	8	8	8	8	7	7	8	8	9	9	9	9	9	9	9	9	9	9	9	9	9	9	9	9	9	9	8		

NOTE: This is automated data that may/may not agree with the official BAM thinking that's found on the daily slides or special visibility report slides. This data should be used as a guide only

Houston Pilots: Tue. 1/30/2024

Forecast Discussion

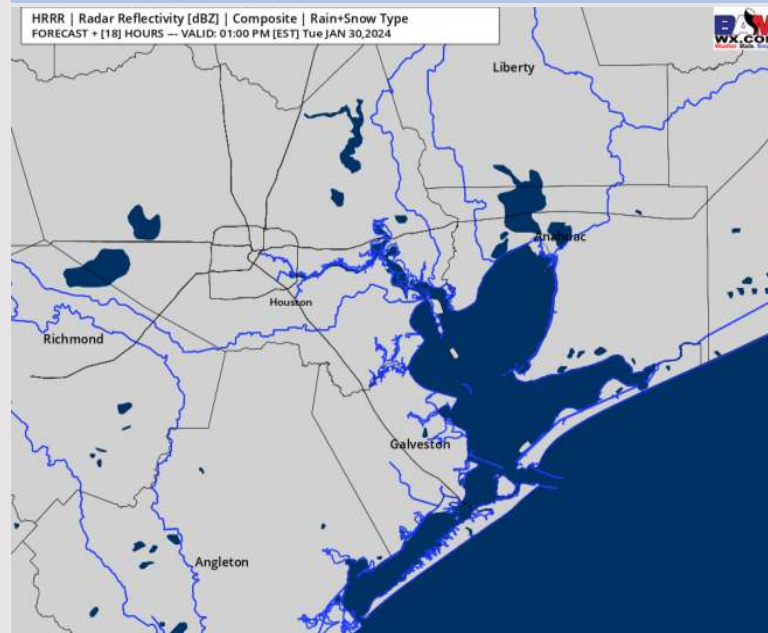
Precip: Dry conditions favored throughout the day.

Wind: Winds to gradually shift from SW to W by 7 AM then to out of the WSW by 6 PM. **N Morgan's Point:** 3-8 kts throughout the day. **S of Morgan's Point:** 4-9 kts through 4PM when winds will slightly pick up to 7 – 12 kts for the rest of the day.

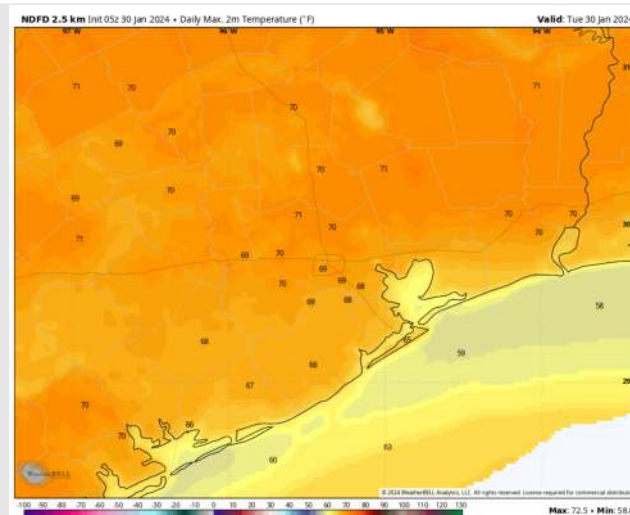
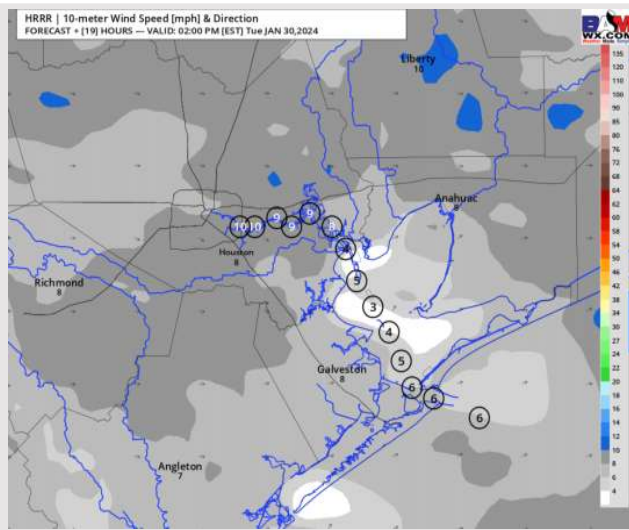
High Temps: **N of Morgan's Point:** Mid-to-High 60s F **S of Morgan's Point:** Upper 50s-Near 60 F .

Visibility: No visibility concerns for today.

Precip Image: 12 PM CT



Wind Speed:
1 PM CT



High Temps
Today

Houston Pilots: Wed. 1/31/2024

Forecast Discussion

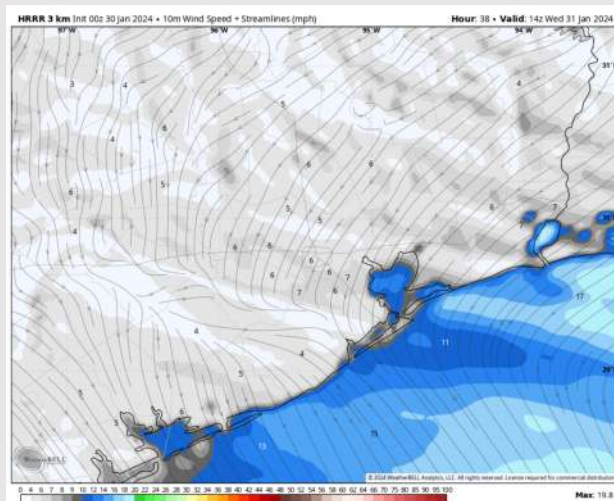
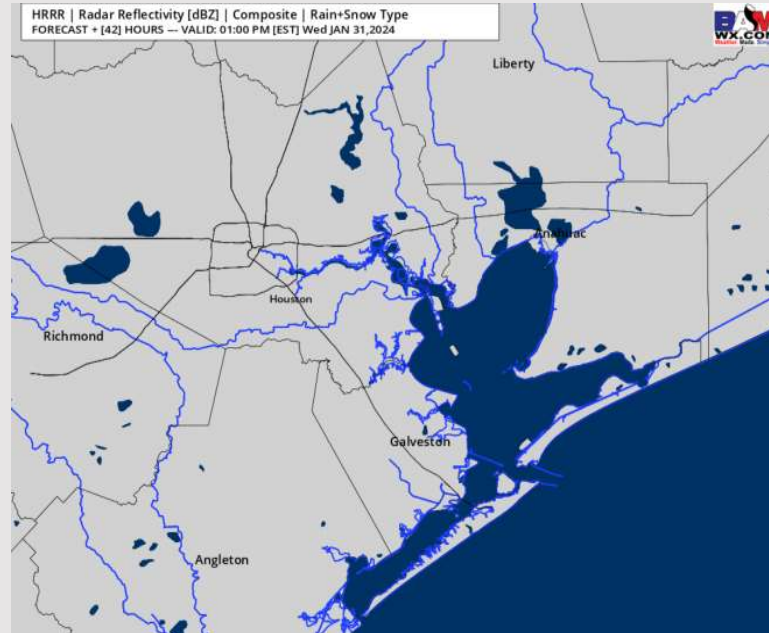
Precip: Favoring dry conditions throughout the day on Wednesday.

Wind: Winds to gradually shift to being out of the NW by 5AM, NE by 10 AM, then settle out of the SE by 6 PM. **N Morgan's Point:** 3-8 kts the entire day **S of Morgan's Point:** Winds will be at 7-12 kts through ~9 AM before decreasing to 3-8 kts the rest of the day. (Winds at the Boarding Station can linger ~10-12 kts through 4 PM)

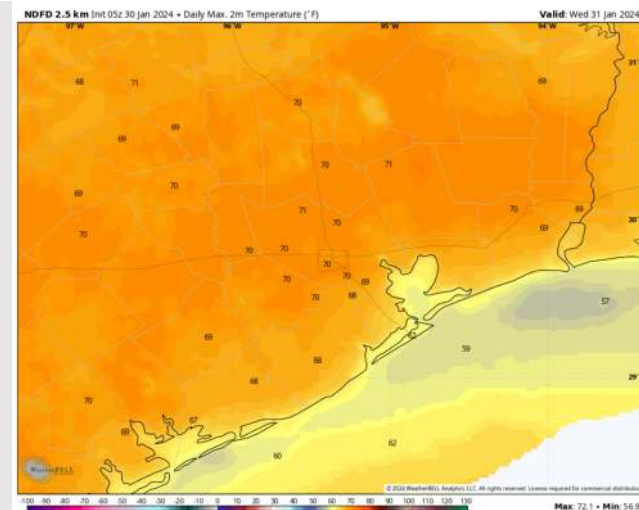
High Temps: **N of Morgan's Point:** Upper 60s/Near 70 F. **S of Morgan's Point:** Upper 50s/Near 60 F.

Visibility: No visibility concerns favored for Wednesday.

Precip Image: 12 PM CT



Wind Speed:
8 AM CT



High Temps
Wednesday

Houston Pilots: Thu. 2/1/2024

Forecast Discussion

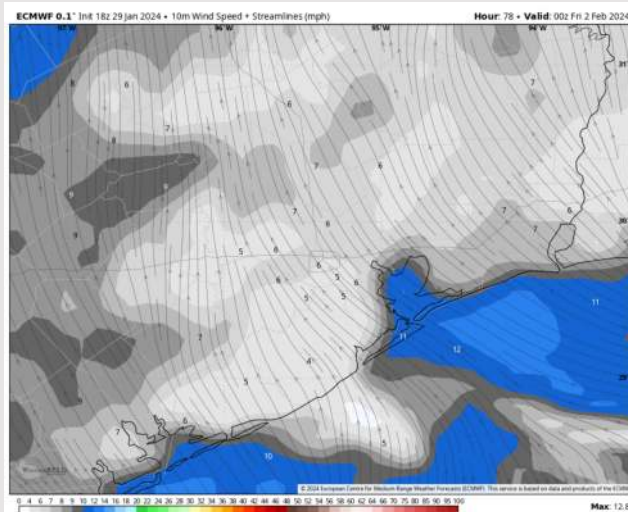
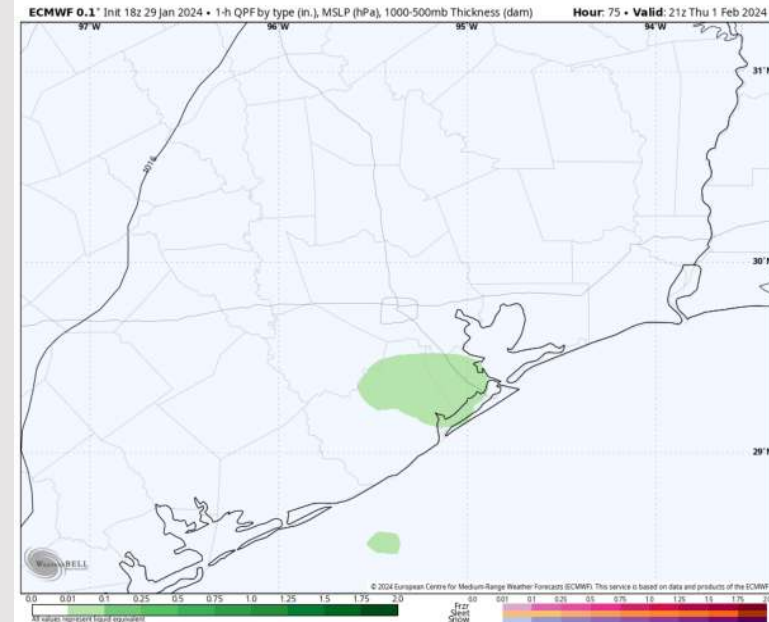
Precip: Dry conditions favored Thursday AM with light drizzle/showers entering for the PM hours.

Wind: Winds out of the SE the entire day THU. **N of Morgan's Point:** 3-8 kts the entire day. **S of Morgan's Point:** 3-8 kts through 10 AM before a slight increase to 7-12kts the rest of the day.

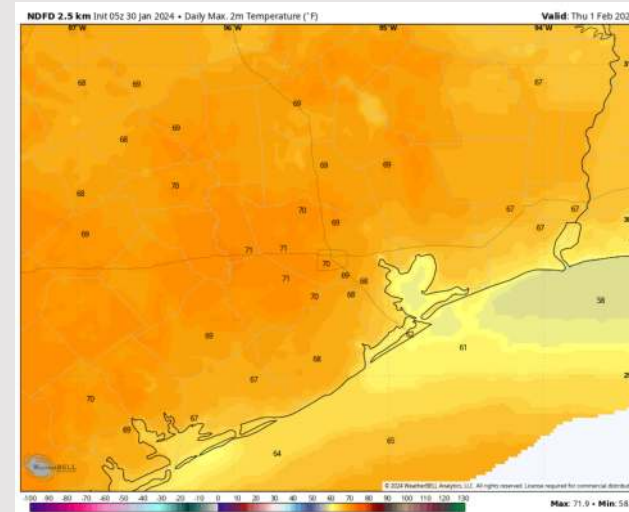
High Temps: **N of Morgan's Point:** High 60s to near 70 F. **S of Morgan's Point:** Low 60s F

Visibility: A patchy fog risk will present itself during the mid morning hours for stations N of Morgan's Point.

Precip Image: 3 PM CT



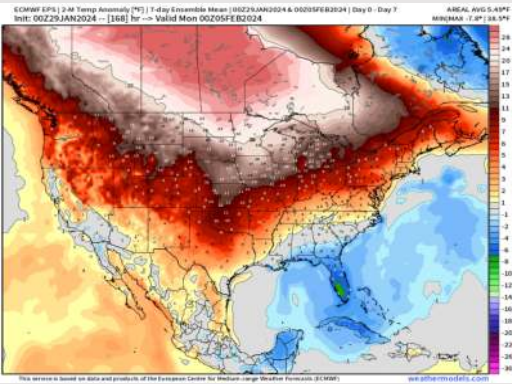
Wind Speed:
6 PM CT



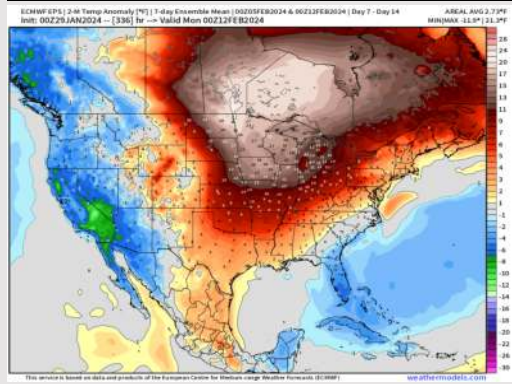
High Temps
Thursday

Houston Pilots: 1/30/24

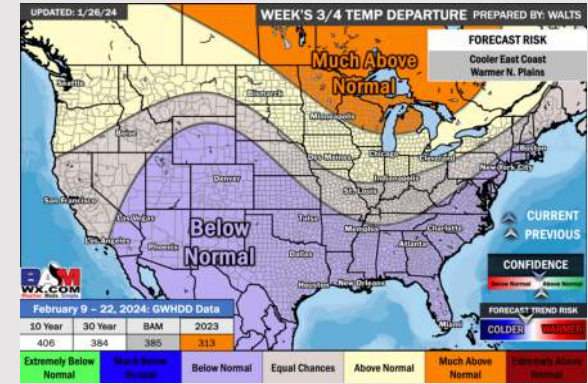
Next 7 Day Temperature Departure



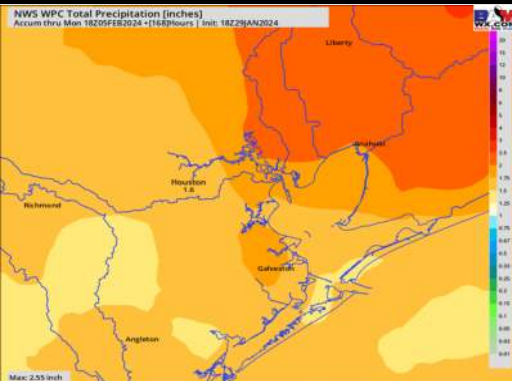
8-14 Day Temperature Departure



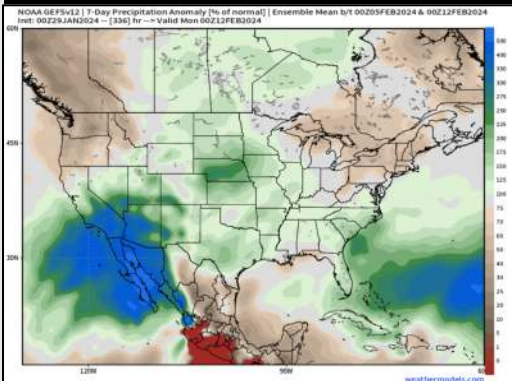
15-30 Day Temperature Departure



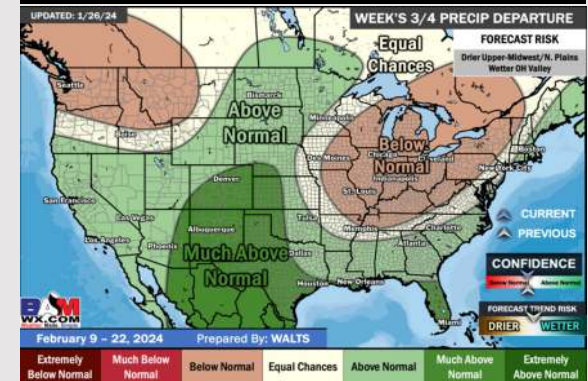
Next 7 Day Total Precipitation



8-14 Day % of Average Precip.



15-30 Day % of Average Precip.



- Drier conditions will continue through roughly Thursday AM before drizzle can press into the area during the afternoon. Another wave with the best chances for accumulation looks to enter on Saturday. Slightly above normal temperatures favored for the week ahead.
- Above normal precipitation chances are at play during the week 2 timeframe. Temps expected to be above normal.
- Below normal temperatures and much above normal chances for precipitation are favored in the weeks 3/4 timeframe.