

Houston Pilots Forecast Package



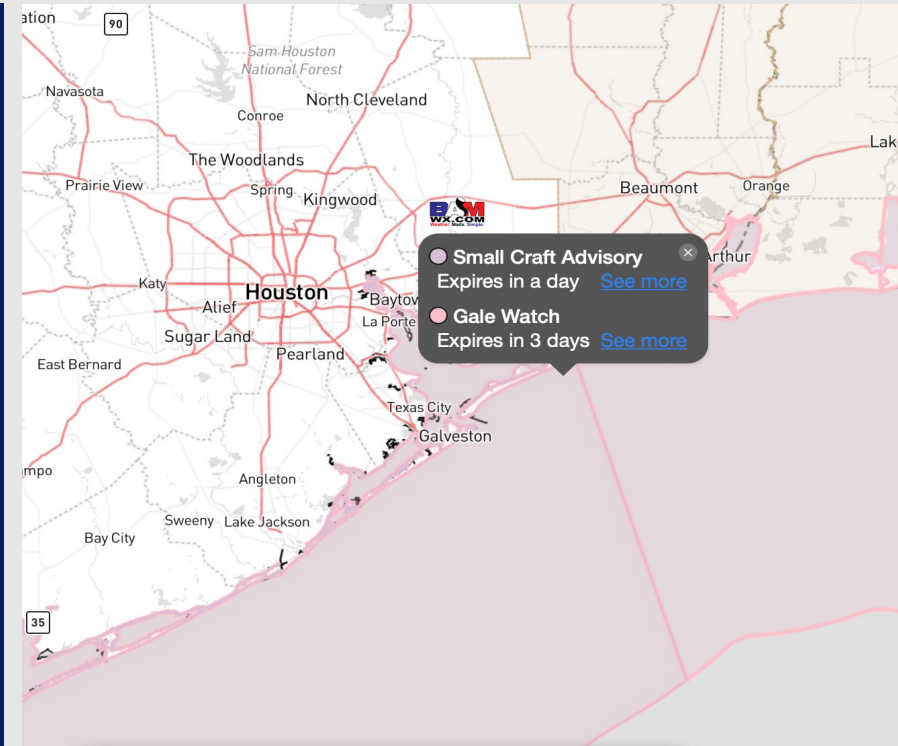
Updated: 4:00 PM CT

Saturday, January 6, 2024

Forecaster: Will Danby

Weather Headlines

- Favoring a dry rest of the weekend. Watching Monday AM ~5 AM at the earliest for rain chances to enter.
- Winds will remain generally calm throughout today and SUN AM, however watching for strong gust potential after SUN PM with incoming rain showers.
- Next fog potential will start early Monday AM ahead of rain chances with uplift on the cold front.
- A low end-severe threat will be possible with storms on Monday as well.



Radar/NWS Alerts: 3:54 PM CT



As always, please do not hesitate to reach out to us with any forecast questions via the chat option on the Weather Porthole or our on-call number, **(317)-560-8122** press 1 for forecast questions.

Houston Pilots Extended Range Visibility Report



Tuesday 1/9/24

No visibility concerns for Tuesday.

Forecast Confidence



Wednesday 1/10/24

No visibility concerns for Wednesday.

Forecast Confidence



Thursday 1/11/24

No visibility concerns for Thursday.

Forecast Confidence



Chance for Fog

Tuesday AM	Unlikely
Tuesday PM	Unlikely
Wednesday AM	Unlikely
Wednesday PM	Unlikely
Thursday AM	Unlikely
Thursday PM	Unlikely

Houston Pilots Visibility Chart (miles)



Forecast Confidence



Time	Sat 12am	Sat 1am	Sat 2am	Sat 3am	Sat 4am	Sat 5am	Sat 6am	Sat 8am	Sat 9am	Sat 10am	Sat 11am	Sat 12pm	Sat 1pm	Sat 2pm	Sat 3pm	Sat 4pm	Sat 5pm	Sat 6pm	Sat 7pm	Sat 8pm	Sat 9pm	Sat 10pm	Sat 11pm	Sun 12am	Sun 1am	Sun 2am	Sun 3am	Sun 4am	Sun 5am	Sun 6am	Sun 7am	Sun 8am	Sun 9am	Sun 10am	Sun 11am		
610 Bridge	10	10	10	10	10	10	9	2	8	10	10	10	10	10	10	10	10	10	10	10	10	10	10	10	10	10	10	10	10	10	7	7	6	10	10	10	
Kinder 1	10	10	10	10	10	10	7	2	6	10	10	10	10	10	10	10	10	10	10	10	10	10	10	10	10	10	10	10	10	10	7	7	6	10	10	10	
Greens Bayou	10	10	10	10	10	10	6	2	6	10	10	10	10	10	10	10	10	10	10	10	10	10	10	10	10	10	10	10	10	10	7	7	7	10	10	10	
Shell Crude	10	10	10	10	10	10	7	2	5	10	10	10	10	10	10	10	10	10	10	10	10	10	10	10	10	10	10	10	10	10	10	8	9	9	10	10	10
Lynchburg Ferries	10	10	10	10	10	7	4	2	5	10	10	10	10	10	10	10	10	10	10	10	10	10	10	10	10	10	10	10	10	10	10	8	9	9	10	10	10
Exxon 3	10	10	10	10	10	10	10	2	5	10	10	10	10	10	10	10	10	10	10	10	10	10	10	10	10	10	10	10	10	10	10	9	9	9	10	10	10
Morgans Point	10	10	10	10	10	10	10	2	5	10	10	10	10	10	10	10	10	10	10	10	10	10	10	10	10	10	10	10	10	10	10	9	9	10	10	10	10
75/76	10	10	10	10	10	10	10	2	5	10	10	10	10	10	10	10	10	10	10	10	10	10	10	10	10	10	10	10	10	10	10	9	10	10	10	10	10
63/64	10	10	10	10	10	10	10	2	5	10	10	10	10	10	10	10	10	10	10	10	10	10	10	10	10	10	10	10	10	10	10	10	10	10	10	10	10
51/52	10	10	10	10	10	10	10	4	6	10	10	10	10	10	10	10	10	10	10	10	10	10	10	10	10	10	10	10	10	10	10	10	10	10	10	10	10
37/38	10	10	10	10	10	10	10	7	9	10	10	10	10	10	10	10	10	10	10	10	10	10	10	10	10	10	10	10	10	10	10	10	10	10	10	10	10
25/26	10	10	10	10	10	10	10	10	10	10	10	10	10	10	10	10	10	10	10	10	10	10	10	10	10	10	10	10	10	10	10	10	10	10	10	10	10
11/12	10	10	10	10	10	10	10	10	10	10	10	10	10	10	10	10	10	10	10	10	10	10	10	10	10	10	10	10	10	10	10	10	10	10	10	10	10
1 & 2 Bravo	10	10	10	10	10	10	10	10	10	10	10	10	10	10	10	10	10	10	10	10	10	10	10	10	10	10	10	10	10	10	10	10	10	10	10	10	10

NOTE: This is the Visibility Log from the AM update. Currently dealing with data issues on initializing hourly visibility data. Check SAT PM slide for more details.

Houston Pilots Wind Chart



Forecast Confidence



Example

Sustained wind 13 Knots
Gusts 18 Knots
Wind from the N

WS: 13
G:18
N

Time Knots	Sat 12am	Sat 1am	Sat 2am	Sat 3am	Sat 4am	Sat 5am	Sat 6am	Sat 8am	Sat 9am	Sat 10am	Sat 11am	Sat 12pm	Sat 1pm	Sat 2pm	Sat 3pm	Sat 4pm	Sat 5pm	Sat 6pm	Sat 7pm	Sat 8pm	Sat 9pm	Sat 10pm	Sat 11pm	Sun 12am	Sun 1am	Sun 2am	Sun 3am	Sun 4am	Sun 5am	Sun 6am	Sun 7am	Sun 8am	Sun 9am	Sun 10am	Sun 11am	
610 Bridge	1	0	1	1	2	2	1	2	2	3	3	4	4	4	6	5	4	4	4	3	2	2	2	2	2	2	1	1	2	2	2	2	2	4	5	5
	2	1	1	2	3	4	5	7	6	7	7	8	8	7	9	7	7	6	5	4	3	2	2	2	2	2	2	2	2	2	3	3	4	6	6	7
	SSE	SSE	SSE	NNE	NNE	NNE	SSE	NW	NNW	NNW	NW	NW	NW	NW	NW	NW	NW	NW	NW	NW	NNW	NNW	NNW	N	NNE	NNE	NNE	NNE	NE	NE	ENE	ENE	ENE	E	E	E
Kinder 1	1	0	1	1	2	2	1	2	2	3	3	4	4	4	5	5	4	4	4	3	2	2	2	2	2	1	1	2	2	2	2	2	2	4	5	5
	2	1	2	2	3	4	5	7	6	7	7	8	8	7	8	7	6	6	4	4	3	2	2	2	2	3	2	2	2	3	3	4	6	6	7	
	SE	SE	SE	NE	NE	NNE	SE	NW	NW	NW	NW	NW	NW	NW	NW	NW	NW	NW	NW	NW	NNW	NNW	NNW	N	NNE	NNE	NNE	NNE	NE	NE	ENE	ENE	ENE	E	E	E
Greens Bayou	1	0	1	1	2	2	1	2	2	3	3	4	5	4	5	5	4	4	4	3	2	2	2	2	2	1	1	2	2	2	2	2	4	4	5	
	2	1	2	2	4	4	3	7	6	7	7	8	8	8	8	7	6	6	4	4	3	2	2	2	2	3	2	3	2	3	3	4	6	6	7	
	ESE	SSE	E	NE	NNE	NNE	SSE	NW	NW	NW	NW	NW	NW	NW	NW	NW	NW	NW	NW	NNW	NNW	NNW	NNW	N	SE	NNE	NNE	NNE	NE	NE	ENE	ENE	ENE	E	E	E
Shell Crude	1	0	2	1	2	2	1	2	2	3	3	4	5	4	5	4	4	4	4	3	2	2	2	2	2	2	2	2	2	2	2	3	4	5	5	
	2	1	2	3	4	5	2	6	6	7	7	8	8	8	8	7	6	6	5	4	3	3	3	3	4	3	2	3	2	3	3	4	6	6	7	
	ESE	SE	E	NE	NNE	NNE	ESE	NW	NW	NW	NW	NW	NW	NW	NW	NW	NW	NW	NW	NW	NNW	NNW	NNW	NNW	NNE	NNE	NNE	NE	NE	ENE	ENE	ENE	E	E	E	
Lynchburg Ferries	1	1	1	1	2	2	1	2	2	3	3	4	5	4	5	5	4	4	4	3	3	2	2	2	2	2	2	2	2	2	3	3	4	5	5	
	2	1	2	3	5	5	2	5	6	7	7	9	9	8	9	7	6	6	5	4	3	3	3	3	4	3	3	3	3	3	4	6	6	7		
	ESE	S	E	NE	NNE	NNE	WSW	NW	NW	NW	NW	NW	NW	NW	NW	NW	NW	NW	NW	NW	NNW	NNW	NNW	NW	NW	NNE	NNE	NE	NE	ENE	ENE	ENE	E	E	E	
Exxon 3	1	0	1	1	2	3	1	2	2	3	4	4	5	4	6	5	4	4	4	3	3	3	3	2	3	3	2	2	3	3	4	5	6	6		
	2	1	2	3	6	7	3	4	6	7	7	8	9	8	8	7	7	6	5	4	3	4	4	3	4	4	3	3	3	4	5	6	6	7		
	E	S	ENE	NE	NNE	NNE	WSW	NW	NW	NW	NW	NW	NW	NW	NW	NW	NW	NW	NW	NW	NNW	NNW	W	NW	NE	N	NNE	NE	NE	ENE	ENE	ENE	E	E	E	
Morgans Point	2	0	2	3	4	4	2	3	3	4	4	4	5	4	6	5	5	5	5	4	4	3	4	3	3	3	3	3	3	3	4	5	6	6		
	3	1	2	4	5	8	4	4	6	7	7	7	8	8	8	8	7	6	5	5	4	4	4	4	4	4	4	4	4	5	5	6	7	7	8	
	ENE	SE	NE	NNE	NNE	NNE	SSE	NW	NW	NW	NW	NW	NW	NW	NW	NW	NW	NW	NW	NW	NNW	NNW	SSW	S	SSE	NNE	N	NNE	NNE	NE	NE	ENE	ENE	ENE	E	E
75/76	3	0	1	3	4	7	4	4	4	5	5	5	4	3	6	6	6	6	5	5	5	5	5	4	5	4	4	4	5	5	6	6	7	7	7	
	3	0	1	3	4	8	4	4	6	7	7	8	7	8	8	8	7	6	6	6	6	5	5	5	5	5	5	5	5	5	6	6	7	8	8	9
	NNE	SSE	ENE	E	NNE	NNE	NNE	NW	NW	NW	NNW	NW	NW	NW	NW	NW	NW	NW	NW	NNW	NNW	W	ENE	NNE	N	NNE	NNE	NNE	NE	NE	ENE	ENE	ENE	E	E	E
63/64	3	0	1	1	3	7	4	4	4	5	5	5	4	3	5	6	5	5	5	5	4	5	4	5	4	5	4	4	4	5	5	6	6	7	8	8
	3	0	1	1	3	7	4	5	5	6	7	8	8	7	8	8	6	6	6	6	6	5	5	5	5	5	5	5	5	6	6	7	7	8	9	9
	NNE	SSW	SSE	SE	NNE	NNE	NNE	NW	NW	NW	NNW	NNW	NNW	NNW	NNW	NW	NW	NW	NW	NNW	NNW	N	NE	S	N	NNE	NNE	NNE	NE	NE	ENE	ENE	ENE	E	E	E
51/52	3	0	1	1	4	7	5	5	4	5	6	7	8	8	8	8	6	6	5	5	4	5	4	5	4	5	5	5	5	6	6	7	8	8	8	
	3	1	1	1	4	7	5	5	4	6	7	8	8	8	8	8	6	6	5	5	4	5	4	5	4	5	5	5	5	6	6	7	8	9	9	9
	NE	ESE	WSW	S	NNE	NNE	NNE	NNW	NNW	NNW	NNW	NNW	NNW	NNW	NNW	NNW	NNW	NNW	NNW	NNW	N	NE	NW	N	NNE	NNE	NNE	NE	NE	ENE	ENE	ENE	E	E	E	
37/38	2	2	1	1	5	6	6	4	4	4	6	7	6	5	5	5	4	4	4	4	3	4	4	5	4	4	5	4	4	5	5	6	7	8	8	8
	3	2	2	1	5	6	7	5	4	5	7	8	8	8	7	7	5	6	5	5	4	4	4	4	4	5	5	5	5	6	6	7	8	9	9	10
	NE	NNE	WNW	SW	NNE	NNE	NNE	NNW	NNW	NNW	NNW	NNW	NNW	SW	NNW	NNW	NNW	NNW	NNW	NNW	N	S	NW	N	N	NNE	NNE	NNE	NE	NE	ENE	ENE	ENE	E	E	E
25/26	2	3	1	1	5	5	6	4	4	4	6	7	6	6	5	5	4	4	3	4	3	3	3	3	4	4	4	4	5	5	5	6	7	8	8	8
	2	3	3	2	5	6	7	6	4	5	6	7	8	8	7	7	5	5	5	5	4	4	4	4	5	5	5	5	5	6	6	7	8	9	9	10
	NE	NNE	NW	W	ENE	NNE	NNE	N	NNW	NNW	NNW	NW	NW	SW	NNW	NNW	NNW	NNW	NNW	NNW	NNW	N	NW	WNW	N	N	NNE	NNE	NNE	NE	NE	ENE	ENE	ENE	E	E
11/12	3	4	2	2	4	5	6	4	3	3	6	7	6	5	5	4	4	4	4	4	4	4	4	4	5	5	5	5	5	6	6	7	8	8	8	9
	3	4	4	3	5	6	7	6	5	4	6	7	8	8	7	7	6	5	5	5	5	5	5	5	5	5	6	6	6	7	7	8	9	9	10	
	NE	SE	NW	W	S	NNE	NNE	NNW	N	NNW	NNW	NNW	NNW	NW	NNW	NNW	NNW	NNW	NNW	NNW	N	NNW	NNW	N	N	N	NNE	NNE	NE	NE	ENE	ENE	ENE	E	E	E
1 & 2 Bravo	3	5	3	3	4	5	7	4	4	4	6	7	7	7	6	6	4	5	5	6	6	6	6	6	6	6	6	6	7	7	7	8	8	9	9	9
	6	7	6	6	7	6	7	5	5	4	6	7	7	8	7	7	6	6	6	6	6	6	6	6	6	7	7	7	8	8	8	9	10	10	10	
	SW	NNW	NNW	NW	NNW	N	N	N	NNW	NNW	NNW	NNW	NNW	NNW	NNW	NNW	NNW	NW	NW	NNW	NNW	N	N	NNW	NE	N	N	NNE	NNE	NE	NE	ENE	ENE	ENE	E	E

NOTE: This is the wind Log from the AM update. Currently dealing with data issues on initializing hourly wind data. Check SAT PM slide for more details.

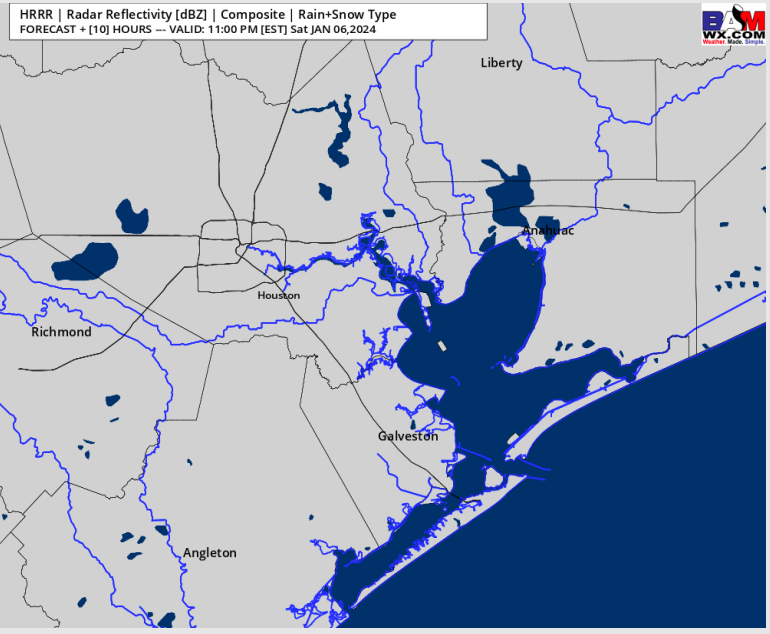
Houston Pilots: Sat. 01/06/2024



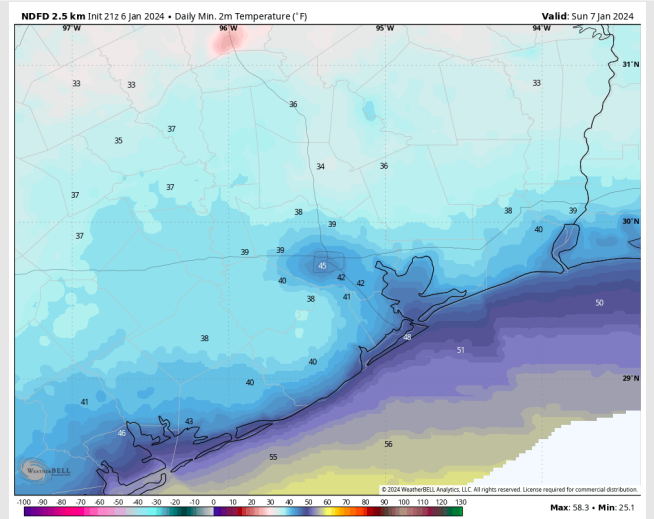
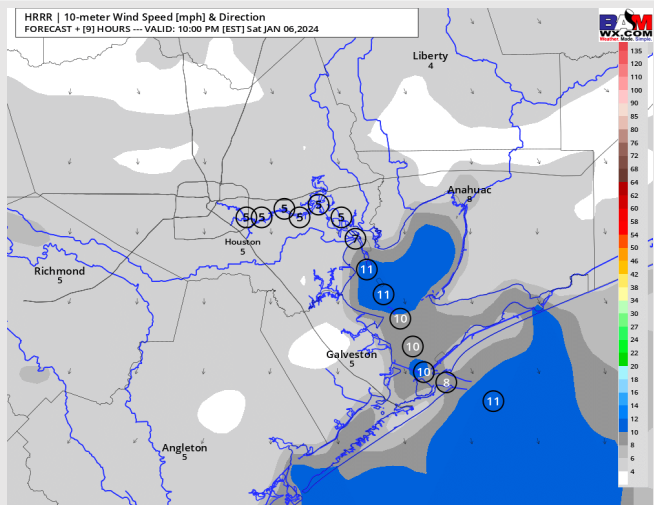
Forecast Discussion

- Precip:** Favoring dry conditions for the remainder of the evening and through sunrise Sunday.
- Wind:** NW winds this afternoon will become more northerly towards 10 PM. **N Morgan's Point:** Winds remain light at 2 - 6 kts. **S of Morgan's Point:** 4 - 9 kts increasing to 5 - 10 kts after 10 PM. Boarding Station remains a touch higher at 6 - 11 kts post 10 PM.
- Low Temps:** **N of Morgan's Point:** Lower to mid 40s F. **S of Morgan's Point:** Mid to upper 40s F. Near 50 F at the Boarding Station.
- Visibility:** Not anticipating any visibility concerns currently.

Precip Image: 10 PM CT



Wind Speed:
9 PM CT



Low Temps
Sunday AM

Houston Pilots: Sun. 01/07/2024



Forecast Discussion

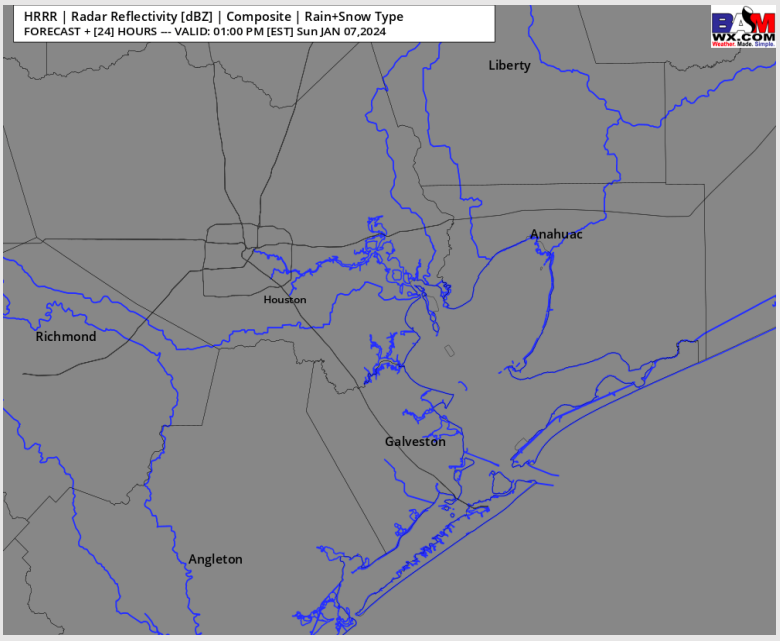
Precip: Favoring dry conditions to continue through Sunday.

Wind: Northerly winds at 12 AM will veer clockwise to being out of the ESE by 10 AM and SE by 7 PM. **N Morgan's Point:** 3- 7kts through 4PM before increasing to 6 -11 kts. **S of Morgan's Point:** 5 - 10 kt winds to start the day, increasing to 8 - 13 knots by 4 PM, and finally 12 - 17 kts by 6 PM. The Boarding station starts at 7 - 12 kts, increasing to 12 - 17 kts by 4 PM, then 17 - 22 kts by 8 PM. **Gusts of up to 25 kts cannot be ruled out after 6 PM for stations S of Morgan's Point and up to 28 kts at the Boarding Station after 9 PM.**

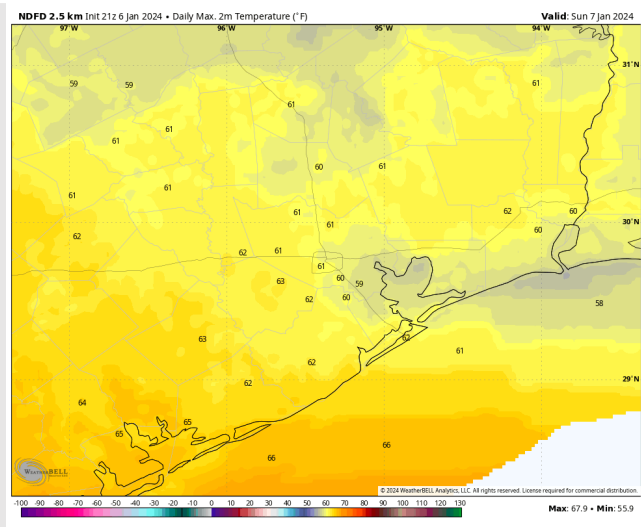
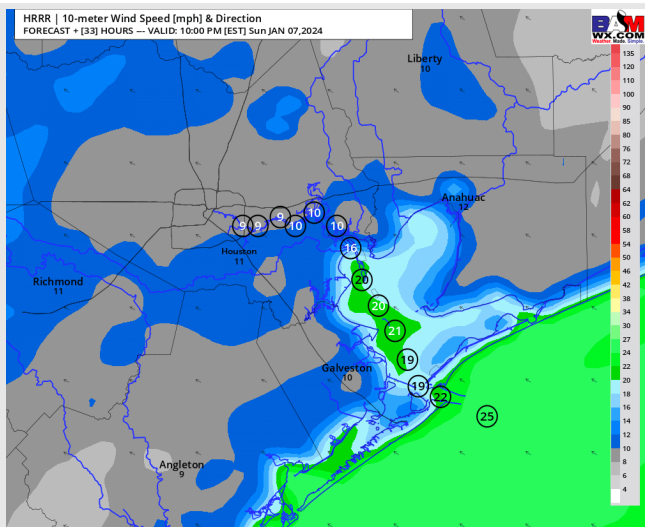
High Temps: **N of Morgan's Point:** Lower 60s F. **S of Morgan's Point:** Lower 60s F.

Visibility: No visibility concerns for Sunday.

Precip Image: 12 PM CT



Wind Speed:
9 PM CT



High Temps
Sunday

Houston Pilots: Mon. 01/08/2024



Forecast Discussion

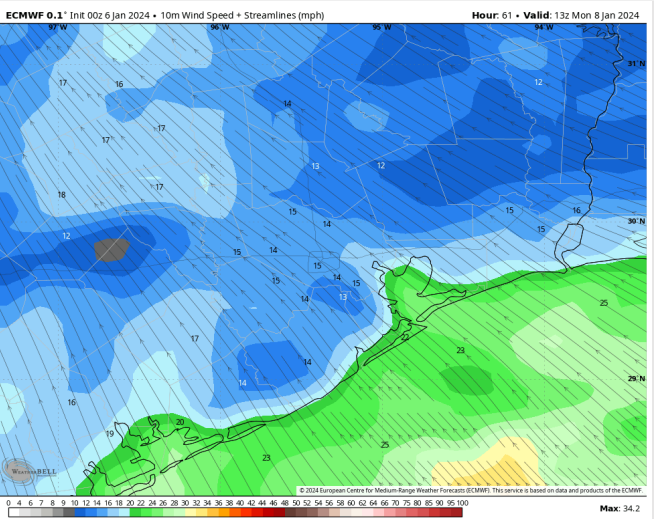
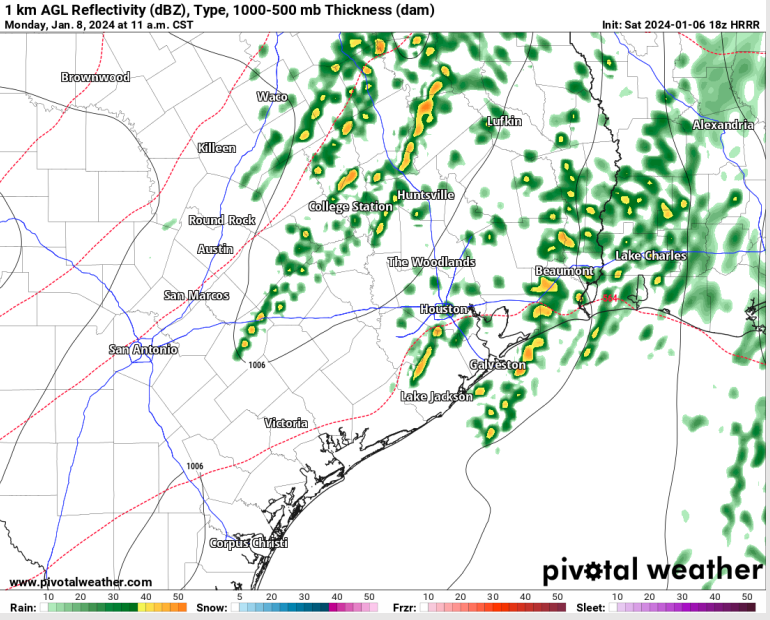
Precip: Anticipating showers/storms to push in from the West around 5 - 8 AM. While there is lower confidence at this time, storms will have potential to be severe in nature. Main threats will be gusty winds of up to 40 kts with locally higher gusts. Small hail and an isolated tornado cannot be ruled out mainly from 10 AM - 8 PM (timeframes will need narrowed down).

Wind: Winds are expected to remain sustained out the SE throughout the day. **N of Morgan's Point:** 12 - 17 kts throughout the day. **S of Morgan's Point:** 15 - 20 kts in the AM, increasing to 18 - 23 kts in the afternoon. The **Boarding Station** follows the same progression with speeds higher by a factor of about 2 kts. (17 - 22 kts prior to 10 AM, 20 - 25 kts thereafter). **Under any strong storm cells in the AM, gusts locally of up to 40 kts cannot be ruled out. Most locations will pose the risk for at least 28 - 33 kt gusts under cells.**

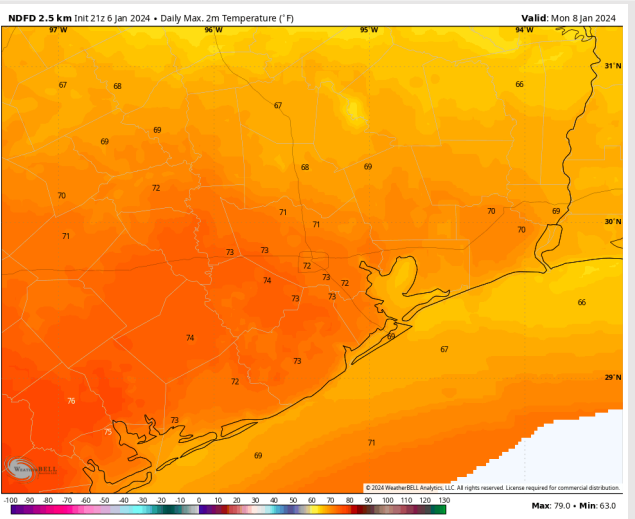
High Temps: Significantly warmer ahead of a cold front. **N of Morgan's Point:** Low 70s F **S of Morgan's Point:** Upper 60s F

Visibility: Lower confidence is present at this time, but we would need to watch in the early AM for fog prior to 8 AM to develop ahead of the front.

Precip Image: 1 PM CT

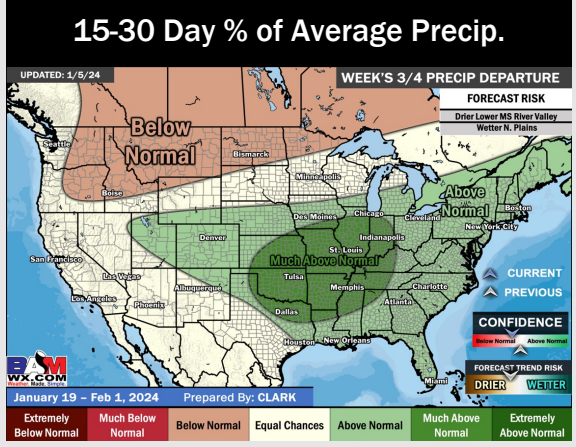
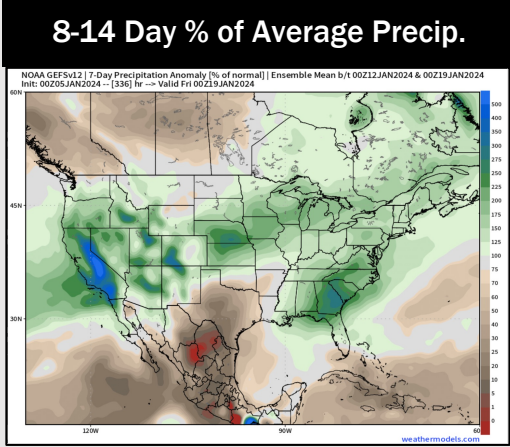
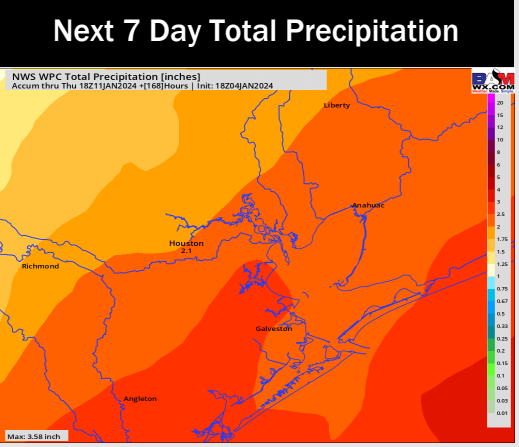
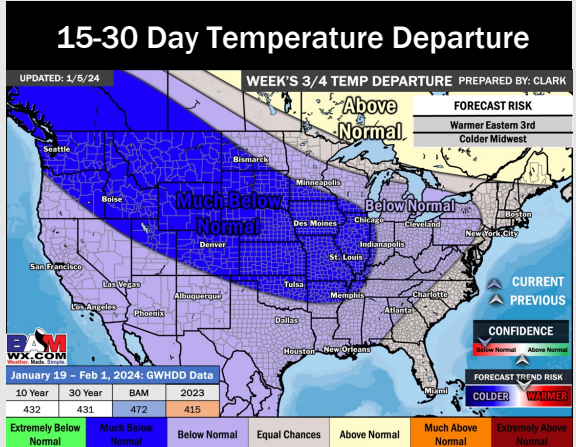
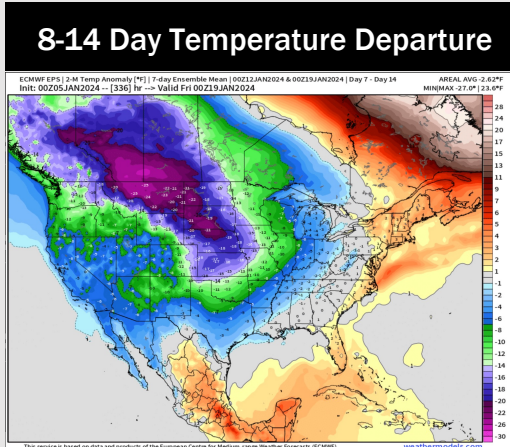
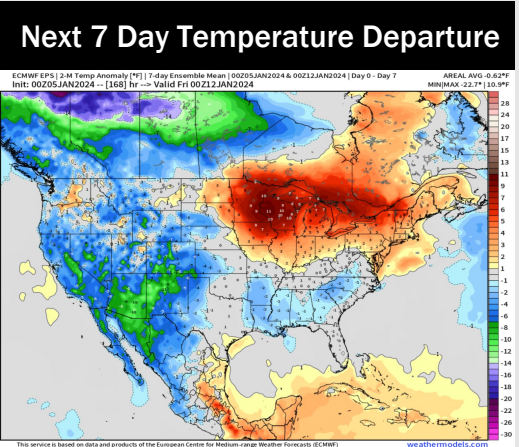


Wind Speed:
7 AM CT



High Temps
Monday

Houston Pilots: 1/6/24



- Next opportunities for rain will be Monday – Tuesday, although lower confidence on exact timing. Seasonable to slightly below normal temperatures for next week.
- Need to monitor for wetter trends towards the end of next week.
- Below normal temperatures and seasonal chances for precipitation are favored in the weeks 3/4 timeframe.