

# Houston Pilots Forecast Package



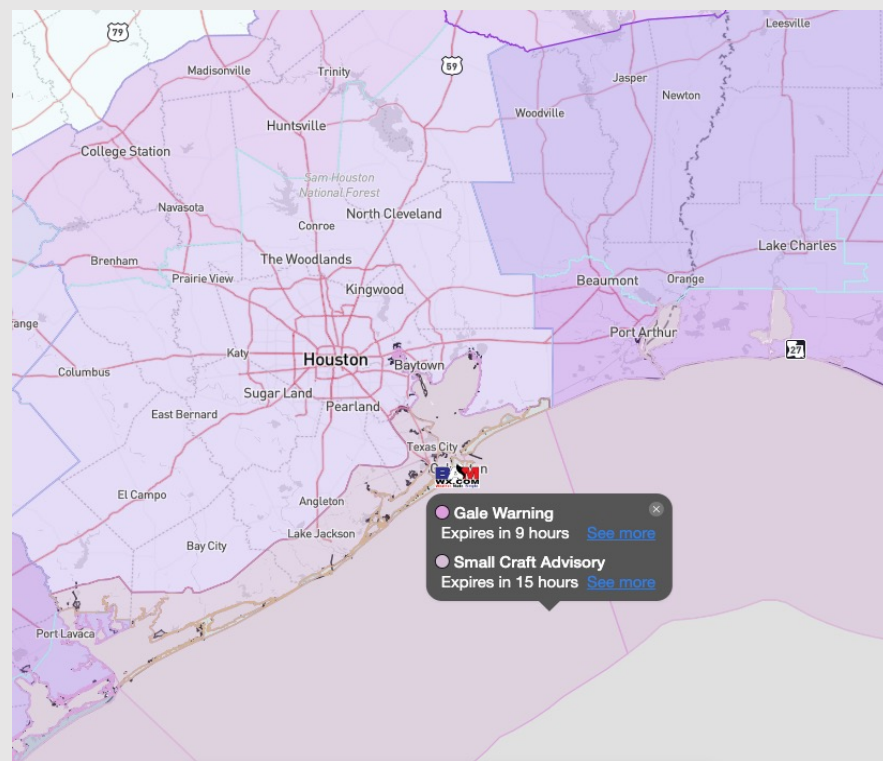
Updated: 3:25 AM CT

Tuesday, January 16, 2024

Forecaster: Jonathan Kipper

## Weather Headlines

- Outside of low end light rain chances THU AM, anticipating a dry week ahead
- Not anticipating fog over the next few days.
- Wind gusts up towards 25-30 kts will be in play near the Boarding Station through the AM hours. Winds on a declining trend come this afternoon/evening.



**Radar/NWS Alerts: 3:15 AM CT**



As always, please do not hesitate to reach out to us with any forecast questions via the chat option on the Weather Porthole or our on-call number, **(317)-560-8122** press 1 for forecast questions.

# Houston Pilots Extended Range Visibility Report



## Friday 1/19/24

Currently monitoring a low-end risk for patchy fog FRI AM, however better potential lies N and W of all Stations at this time.

### Forecast Confidence



## Sunday 1/21/24

No visibility concerns for Sunday

### Forecast Confidence



## Saturday 1/20/24

No visibility concerns for Saturday

### Forecast Confidence



### Chance for Fog

Friday AM	Unlikely
Friday PM	Unlikely
Saturday AM	Unlikely
Saturday PM	Unlikely
Sunday AM	Unlikely
Sunday PM	Unlikely

# Houston Pilots Visibility Chart (miles)



Time	Tue 2am	Tue 3am	Tue 4am	Tue 5am	Tue 6am	Tue 7am	Tue 8am	Tue 9am	Tue 10am	Tue 11am	Tue 12pm	Tue 1pm	Tue 2pm	Tue 3pm	Tue 4pm	Tue 5pm	Tue 6pm	Tue 7pm	Tue 8pm	Tue 9pm	Tue 10pm	Tue 11pm	Wed 12am	Wed 1am	Wed 2am	Wed 3am	Wed 4am	Wed 5am	Wed 6am	Wed 7am	Wed 8am	Wed 9am	Wed 10am	Wed 11am	Wed 12pm	Wed 1pm
610 Bridge	10	10	10	10	10	10	10	10	10	10	10	10	10	10	10	10	10	10	10	10	10	10	10	10	10	10	10	10	10	10	10	10	10	10	10	
Kinder 1	10	10	10	10	10	10	10	10	10	10	10	10	10	10	10	10	10	10	10	10	10	10	10	10	10	10	10	10	10	10	10	10	10	10	10	
Greens Bayou	10	10	10	10	10	10	10	10	10	10	10	10	10	10	10	10	10	10	10	10	10	10	10	10	10	10	10	10	10	10	10	10	10	10	10	
Shell Crude	10	10	10	10	10	10	10	10	10	10	10	10	10	10	10	10	10	10	10	10	10	10	10	10	10	10	10	10	10	10	10	10	10	10	10	
Lynchburg Ferries	10	10	10	10	10	10	10	10	10	10	10	10	10	10	10	10	10	10	10	10	10	10	10	10	10	10	10	10	10	10	10	10	10	10	10	
Exxon 3	10	10	10	10	10	10	10	10	10	10	10	10	10	10	10	10	10	10	10	10	10	10	10	10	10	10	10	10	10	10	10	10	10	10	10	
Morgans Point	10	10	10	10	10	10	10	10	10	10	10	10	10	10	10	10	10	10	10	10	10	10	10	10	10	10	10	10	10	10	10	10	10	10	10	
75/76	10	10	10	10	10	10	10	10	10	10	10	10	10	10	10	10	10	10	10	10	10	10	10	10	10	10	10	10	10	10	10	10	10	10	10	
63/64	10	10	10	10	10	10	10	10	10	10	10	10	10	10	10	10	10	10	10	10	10	10	10	10	10	10	10	10	10	10	10	10	10	10	10	
51/52	10	10	10	10	10	10	10	10	10	10	10	10	10	10	10	10	10	10	10	10	10	10	10	10	10	10	10	10	10	10	10	10	10	10	10	
37/38	10	10	10	10	10	10	10	10	10	10	10	10	10	10	10	10	10	10	10	10	10	10	10	10	10	10	10	10	10	10	10	10	10	10	10	
25/26	10	10	10	10	10	10	10	10	10	10	10	10	10	10	10	10	10	10	10	10	10	10	10	10	10	10	10	10	10	10	10	10	10	10	10	
11/12	10	10	10	10	10	10	10	10	10	10	10	10	10	10	10	10	10	10	10	10	10	10	10	10	10	10	10	10	10	10	10	10	10	10	10	
1 & 2 Bravo	10	10	10	10	10	10	10	10	10	10	10	10	10	10	10	10	10	10	10	10	10	10	10	10	10	10	10	10	10	10	10	10	10	10	10	

NOTE: This is automated data that may/may not agree with the official BAM thinking that’s found on the daily slides or special visibility report slides. This data should be used as a guide only

# Houston Pilots Wind Chart



Sustained wind 13 Knots

Gusts 18 Knots

Wind from the N

**Example**

WS: 13  
G:18  
N

Time Knots	Tue 2am	Tue 3am	Tue 4am	Tue 5am	Tue 6am	Tue 7am	Tue 8am	Tue 9am	Tue 10am	Tue 11am	Tue 12pm	Tue 1pm	Tue 2pm	Tue 3pm	Tue 4pm	Tue 5pm	Tue 6pm	Tue 7pm	Tue 8pm	Tue 9pm	Tue 10pm	Tue 11pm	Wed 12am	Wed 1am	Wed 2am	Wed 3am	Wed 4am	Wed 5am	Wed 6am	Wed 7am	Wed 8am	Wed 9am	Wed 10am	Wed 11am	Wed 12pm	Wed 1pm	
610 Bridge	15	15	15	14	13	12	12	12	12	12	12	11	10	10	9	9	7	6	5	5	4	4	4	3	3	3	2	2	2	2	3	4	4	4	4	5	
	23	23	23	22	20	19	18	18	18	18	17	16	15	15	14	12	11	9	8	7	6	6	6	5	5	5	4	4	4	4	5	6	7	7	8		
	N	N	N	N	N	N	N	N	N	N	N	N	N	N	NNW	N	N	N	N	N	N	N	W	WNW	N	N	NNE	NNE	NNE	NNE	ENE	ENE	E	ESE	SE	SE	
Kinder 1	15	15	15	14	13	12	12	12	12	13	12	12	11	10	10	9	9	7	6	5	5	4	4	4	3	3	3	2	2	2	3	4	4	4	4	5	
	23	23	23	22	20	19	18	18	18	18	17	16	15	15	14	12	11	9	8	7	6	5	6	6	5	5	4	4	4	4	6	6	6	7	8		
	N	N	N	N	N	N	N	N	N	N	N	N	N	N	NNW	N	N	N	N	N	N	N	WNW	WSW	N	N	NNE	NNE	NNE	NE	ENE	E	ESE	SE	SE		
Greens Bayou	16	16	15	14	13	12	12	12	12	13	13	12	11	11	10	10	9	7	6	5	5	4	4	4	3	3	2	2	3	2	3	4	4	5	5		
	23	24	23	22	20	18	18	18	18	16	17	16	15	14	14	12	11	9	8	7	6	5	6	6	5	5	4	4	4	4	6	6	6	7	8		
	N	N	N	N	N	N	N	N	N	N	N	N	N	N	NNW	N	N	N	N	N	N	N	NNW	SW	N	N	NNE	NNE	NNE	NNE	NE	ENE	ENE	E	ESE	SE	SE
Shell Crude	16	16	16	14	13	13	12	13	13	13	13	12	11	10	10	9	7	6	5	5	4	4	4	4	3	3	3	3	3	3	3	4	4	5	5	6	
	24	24	23	22	20	18	18	18	17	16	17	16	15	15	14	12	11	9	8	7	6	6	6	5	5	4	4	4	4	5	6	6	7	7	8		
	N	N	NNE	N	N	N	N	N	N	N	N	N	N	N	NNW	N	N	N	N	N	N	N	NNW	SE	N	N	NNE	NNE	NNE	NNE	NE	ENE	E	ESE	SE	SE	
Lynchburg Ferries	16	16	16	15	14	14	13	13	14	14	13	12	12	11	11	9	7	6	5	5	4	4	4	4	3	3	3	3	3	3	4	4	4	5	5	6	
	24	24	23	22	20	18	18	18	17	16	17	16	15	15	14	12	11	9	8	7	6	6	6	5	5	4	4	4	5	6	6	7	7	8			
	N	N	E	N	N	N	N	N	N	N	N	N	N	N	N	N	N	N	N	N	N	N	SSW	ESE	N	NNE	NNE	NNE	NNE	NNE	NE	ENE	E	ESE	SE	SE	
Exxon 3	17	17	17	16	15	14	14	14	14	14	13	12	12	12	11	10	8	7	6	6	5	5	4	4	4	4	4	4	4	4	4	5	5	5	6		
	24	24	23	22	21	19	18	18	17	17	17	16	16	15	14	13	11	9	9	8	7	6	6	6	6	5	5	5	5	6	6	7	7	8			
	N	N	S	N	N	N	N	N	N	N	N	N	N	N	N	N	N	N	N	N	N	N	SSW	ESE	NE	N	NNE	NNE	NNE	NNE	NE	ENE	E	ESE	SE	SE	
Morgans Point	19	19	19	18	17	16	15	15	15	15	14	13	13	13	13	11	10	9	8	7	7	7	6	6	6	5	5	5	5	5	5	5	5	5	5	6	
	24	24	24	23	21	20	19	19	18	18	17	16	16	15	14	12	11	10	9	9	9	8	8	7	7	7	6	6	6	7	7	7	7	8	9		
	N	N	SE	NNW	N	N	N	N	N	N	N	N	N	N	N	N	N	N	NNW	WSW	ESE	E	NE	N	NNE	NNE	NNE	NNE	NNE	NE	NE	ENE	ENE	ESE	ESE	SE	
75/76	23	23	23	22	21	21	19	19	18	17	16	15	15	14	15	14	13	12	11	10	10	9	9	8	8	7	7	7	7	7	7	6	6	7			
	27	27	26	26	24	23	22	22	20	19	18	18	17	17	16	15	14	13	12	11	10	10	10	9	9	9	8	8	8	8	8	8	8	8	9	10	
	N	N	N	S	N	N	N	N	N	N	N	N	N	N	N	N	N	N	N	N	N	N	SSW	ENE	NE	NNE	NNE	NNE	NNE	NNE	NE	ENE	ENE	E	ESE	ESE	
63/64	26	26	26	26	25	24	22	22	20	19	17	17	16	15	15	16	14	14	13	12	11	11	10	10	9	9	8	8	8	8	8	7	7	6	6	7	
	29	29	29	28	27	26	24	24	22	21	19	19	18	17	17	16	15	14	13	12	11	10	10	10	10	9	9	9	9	9	9	8	8	8	9	10	
	N	N	N	N	N	NW	NW	N	N	N	N	N	N	N	N	N	N	N	NNW	N	N	N	NNE	NNE	NNE	NNE	NNE	NE	NE	NE	ENE	ENE	E	E	ESE	ESE	
51/52	27	26	26	26	25	24	23	23	20	19	18	17	16	15	15	14	14	13	11	11	10	9	9	8	8	8	8	8	8	8	8	7	7	6	6	7	
	30	29	29	28	27	26	25	25	22	21	20	19	18	17	17	16	15	14	12	11	10	10	10	10	9	9	9	9	8	8	8	8	8	9	9	10	
	N	N	N	N	N	NW	NNW	N	N	N	N	N	N	N	N	N	N	N	NW	N	N	N	NNE	NNE	NNE	NNE	NE	NE	NE	NE	NE	ENE	ENE	E	E	ESE	
37/38	27	27	26	26	25	24	23	23	21	20	18	18	17	16	15	15	14	13	12	11	10	10	9	9	8	8	8	8	7	7	7	7	7	7	7	7	
	30	30	29	29	28	26	25	25	23	22	20	20	18	17	17	16	15	15	13	12	11	11	10	10	9	9	9	9	8	8	8	8	8	8	9	9	10
	N	N	N	N	N	SW	NNW	N	N	N	N	N	N	N	N	N	N	N	N	WSW	N	N	NNE	NNE	NNE	NNE	NE	NE	NE	NE	NE	ENE	ENE	E	E	ESE	
25/26	25	25	25	24	24	22	21	21	20	19	18	17	16	15	14	13	12	12	11	10	9	9	8	8	7	7	7	7	7	7	7	7	7	7	8		
	29	29	29	28	27	25	24	24	23	22	20	20	18	17	16	15	14	13	12	11	11	10	9	9	8	8	8	8	7	7	8	8	8	9	9	10	
	N	N	N	N	E	SW	NW	N	N	N	N	N	N	N	N	N	N	NNW	SSE	N	N	NNE	NNE	NNE	NNE	NE	NE	NE	NE	NE	NE	ENE	ENE	E	ESE	ESE	
11/12	24	24	24	23	23	21	21	21	19	19	17	17	16	15	14	13	12	12	11	10	10	9	9	8	8	8	8	7	7	7	7	7	7	8	8		
	28	28	28	27	26	24	23	23	22	21	20	19	18	17	16	15	14	13	12	11	11	10	10	9	9	9	9	8	8	8	8	8	8	8	9	10	
	N	N	N	N	N	E	WSW	N	N	N	N	N	N	N	N	N	NNW	NNE	N	N	N	NNE	NNE	NNE	NNE	NNE	NE	NE	NE	NE	NE	ENE	ENE	E	ESE	ESE	
1 & 2 Bravo	28	29	28	28	26	25	24	24	22	21	20	18	17	16	16	16	15	15	14	13	12	12	11	11	10	10	10	9	9	9	9	8	8	8	8	8	
	30	31	31	30	29	27	26	26	24	23	21	20	19	18	18	17	16	16	15	14	13	13	12	11	11	11	11	11	10	10	9	9	9	9	9	9	
	N	N	N	N	N	ESE	NNW	N	N	N	N	N	N	N	N	N	N	N	N	N	N	NNE	NNE	NNE	NNE	NNE	NNE	NE	NE	NE	NE	ENE	ENE	E	E	ESE	ESE

NOTE: This is automated data that may/may not agree with the official BAM thinking that's found on the daily slides or special visibility report slides. This data should be used as a guide only

# Houston Pilots: Tues. 01/16/2024

## Forecast Discussion

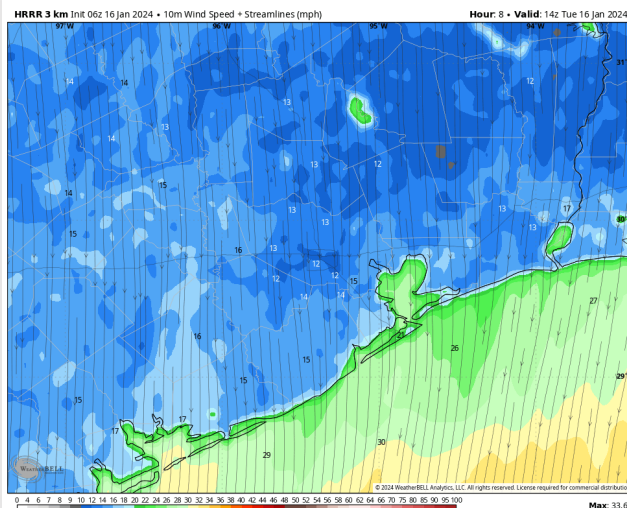
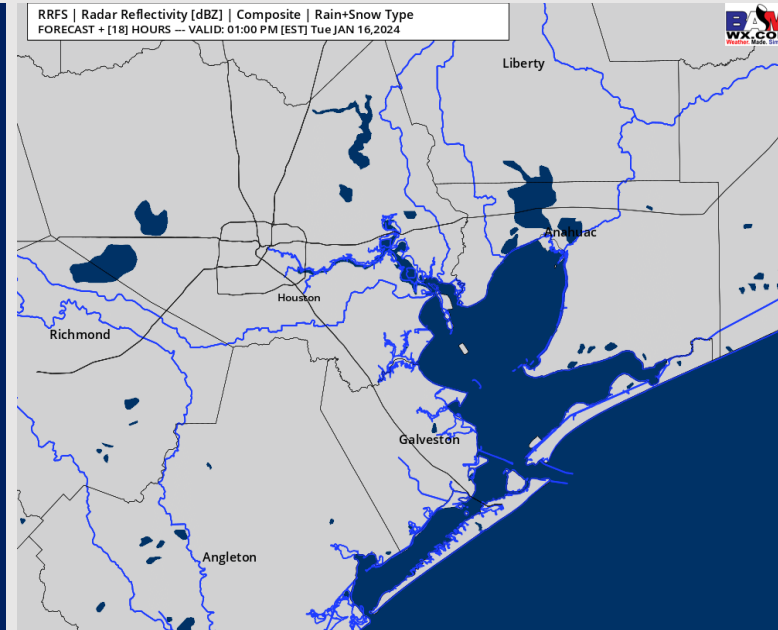
**Precip:** Favoring dry conditions for today.

**Wind:** Winds out of the N throughout the day. **N Morgan's Point:** 10-15 kt winds will begin to gradually decrease after 2 PM, settling at 3-8 kts by 7 PM. **Gusts of 20-25 kts in play N of Morgan's Point through 12 PM.** **S of Morgan's Point:** 20-25 kt winds will also begin to gradually decrease after 2 PM, reaching 12-17 kts by 8 PM and 9-14 kts by 11 PM. **Gusts of 25-30 kts will be in play for Stations S of Morgan's Point through 12 PM.**

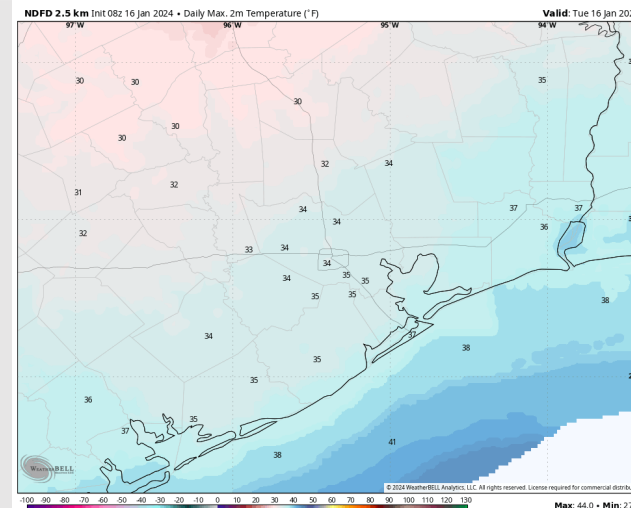
**High Temps:** **N of Morgan's Point:** Mid 30s F. **S of Morgan's Point:** Upper 30s F.

**Visibility:** No visibility concerns for today.

## Precip Image: 12 PM CT



Wind Speed:  
8 AM CT



High Temps  
Today



# Houston Pilots: Wed. 01/17/2024

## Forecast Discussion

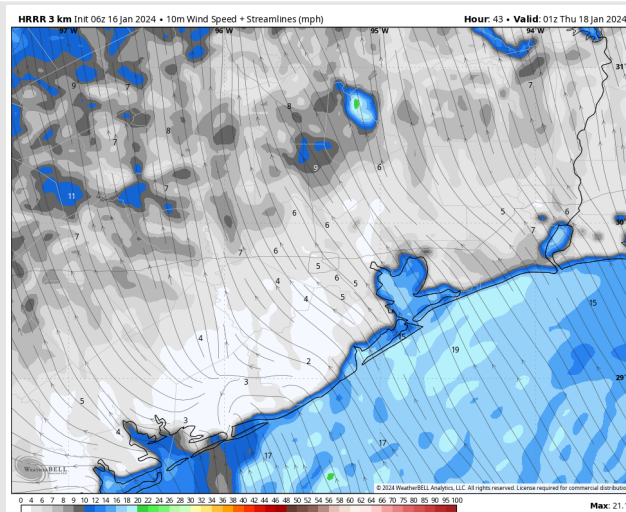
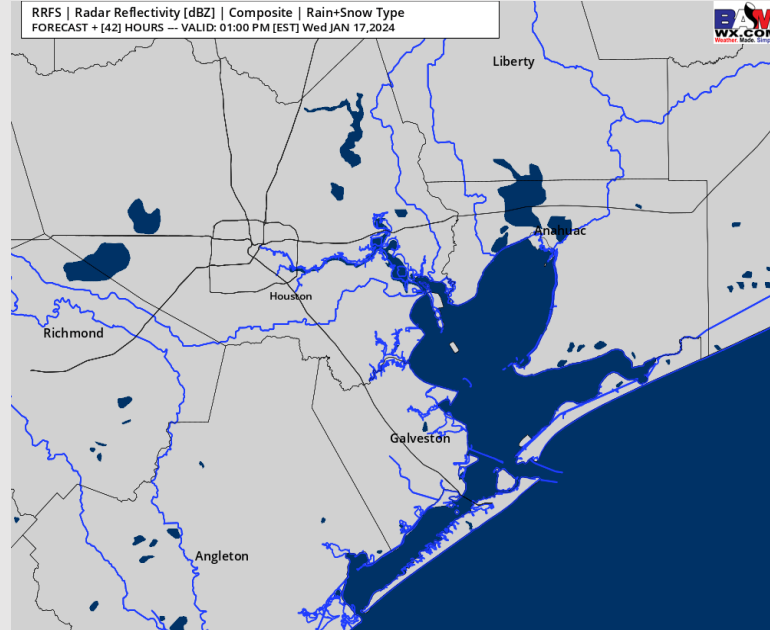
**Precip:** Favoring dry conditions throughout the day Wednesday.

**Wind:** Winds out of the N/NE will veer out of the SE by 12 PM. **N of Morgan's Point:** 3-8 kts throughout the majority of the day, with a increase to 5-10 kts between 2-6 PM. **S of Morgan's Point:** 7-12 kts through 8 PM before slightly increasing to 10-15 kts. Slightly higher winds towards 17 kts near the Boarding Station after 8 PM.

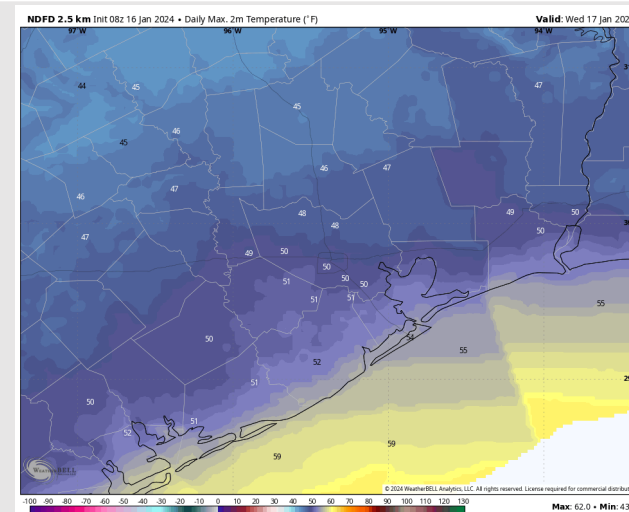
**High Temps:** **N of Morgan's Point:** Near/Low 50s **S of Morgan's Point:** Mid 50s F

**Visibility:** No visibility concerns for Wednesday.

## Precip Image: 12 PM CT



Wind Speeds:  
7 PM CT



High Temps  
Wednesday

## Forecast Discussion

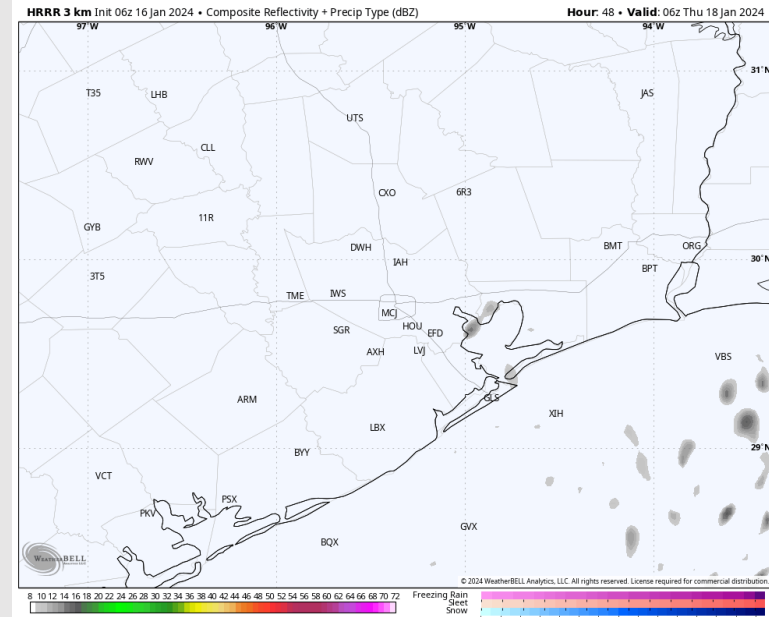
**Precip:** Light drizzle will be possible during the early AM hours S of Morgan's Point, however favoring most stations to remain drier than not. Dry conditions favored after ~6 AM.

**Wind:** Winds will gradually veer throughout THU, being out of the SW by 5 AM, the WSW by 1 PM. **N Morgan's Point:** Winds will be at 6-11 kts the entire day. **S of Morgan's Point:** Winds will be at 10-15 kts through 12 PM before decreasing to 7-12 kts for the PM hours.

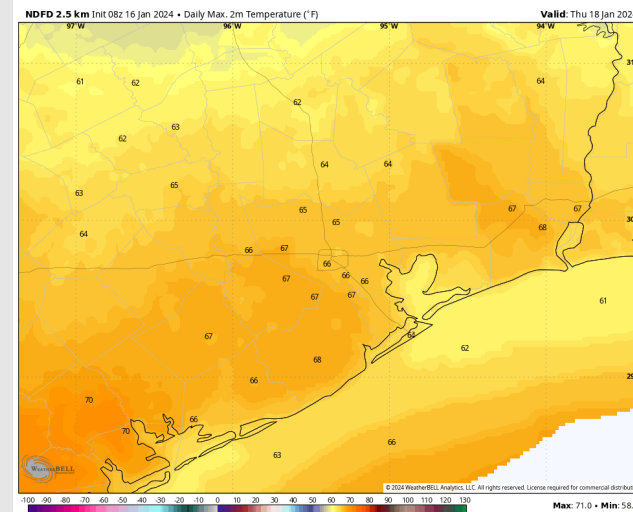
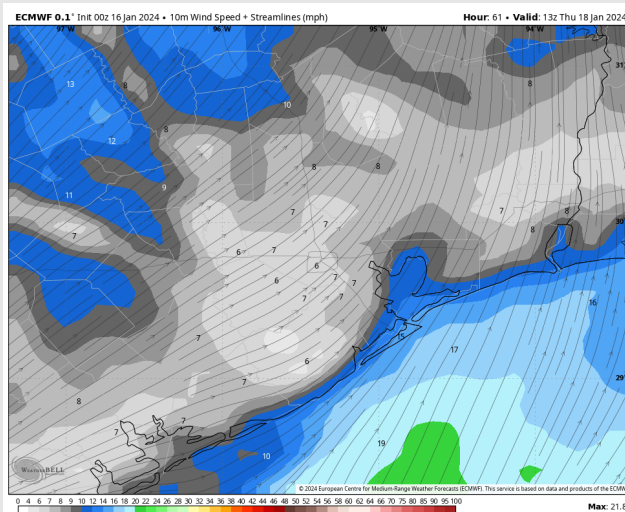
**High Temps:** A significant warm up on THU. **N of Morgan's Point:** Mid 60s F. **S of Morgan's Point:** Low 60s F.

**Visibility:** Not anticipating visibility concerns for Thursday.

## Precip Image: 12 AM CT



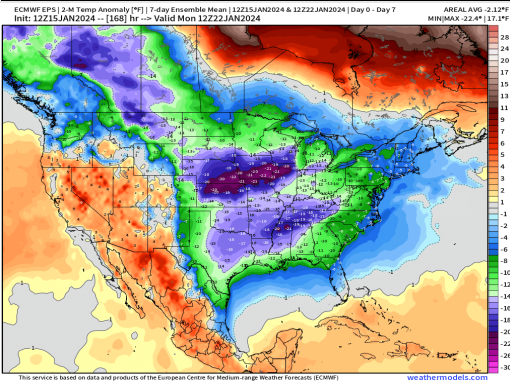
**Wind Speed:**  
7 AM CT



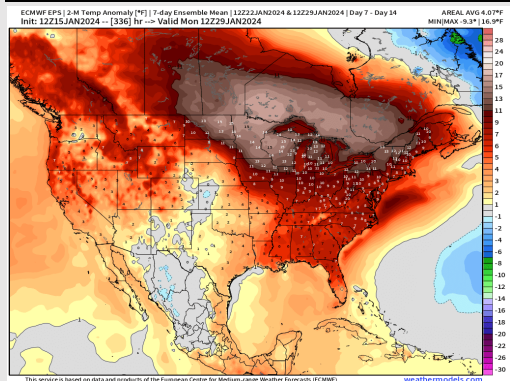
**High Temps**  
**Thursday**

# Houston Pilots: 1/16/24

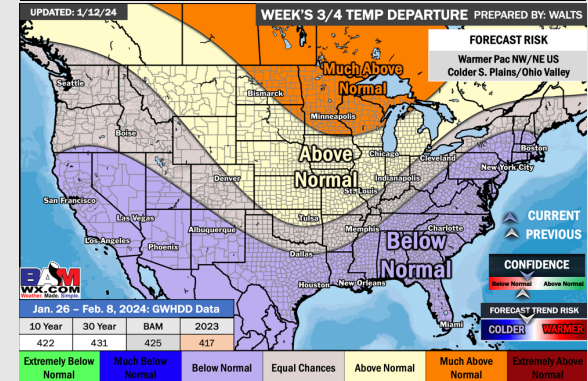
## Next 7 Day Temperature Departure



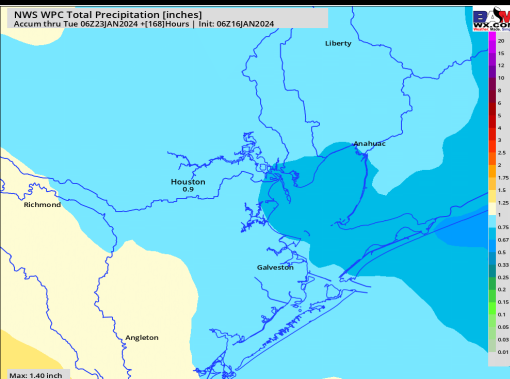
## 8-14 Day Temperature Departure



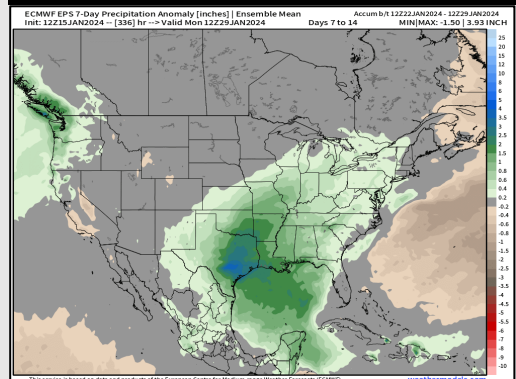
## 15-30 Day Temperature Departure



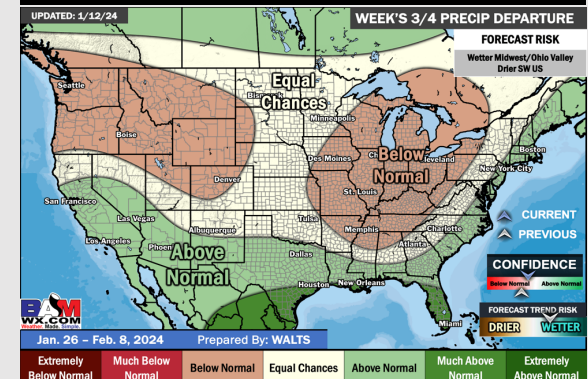
## Next 7 Day Total Precipitation



## 8-14 Day % of Average Precip.



## 15-30 Day % of Average Precip.



- Outside of minor chances THU, looking at MON for the next chance of significant rain. Much below normal temperatures favored for the week ahead.
- Above normal rain chances are expected for the week 2 timeframe. Temps expected to be above normal.
- Below normal temperatures and above normal chances for precipitation are favored in the weeks  $\frac{3}{4}$  timeframe.