

Houston Pilots Forecast Package



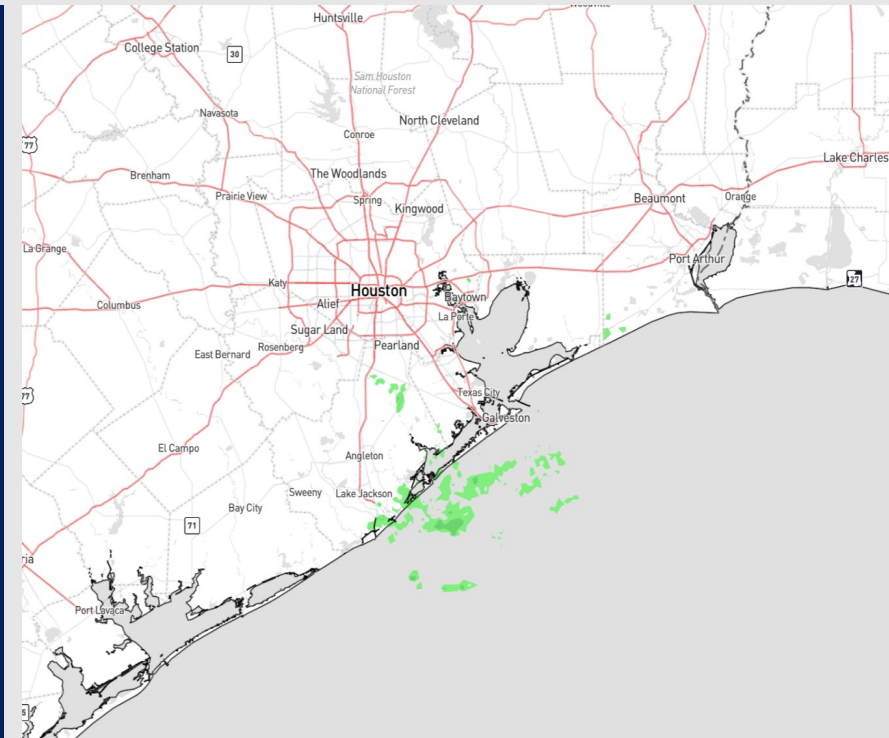
Updated: 4:00 AM CT

Thursday, January 18, 2024

Forecaster: John Kemper

Weather Headlines

- Drizzle / very patchy fog concerns to be low end through mid morning. **See Visibility Slide for Additional Details**
- Watching for a low end risk of patchy fog along the coastline early Friday morning. Otherwise no other concerns with fog at this time until next Tuesday.
- Front passage on Friday morning will result in some gusty winds of locally up to 30 – 35 kts for the boarding station.



Radar/NWS Alerts: 3:45 AM CT

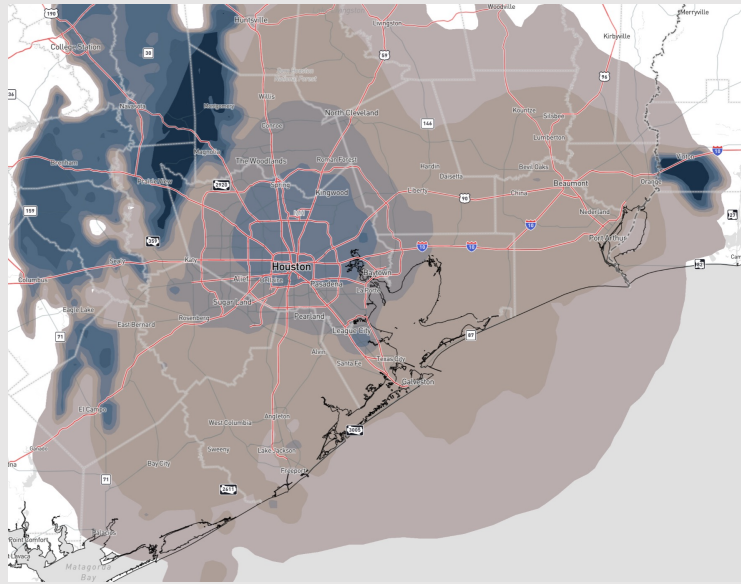


As always, please do not hesitate to reach out to us with any forecast questions via the chat option on the Weather Porthole or our on-call number, **(317)-560-8122** press 1 for forecast questions.

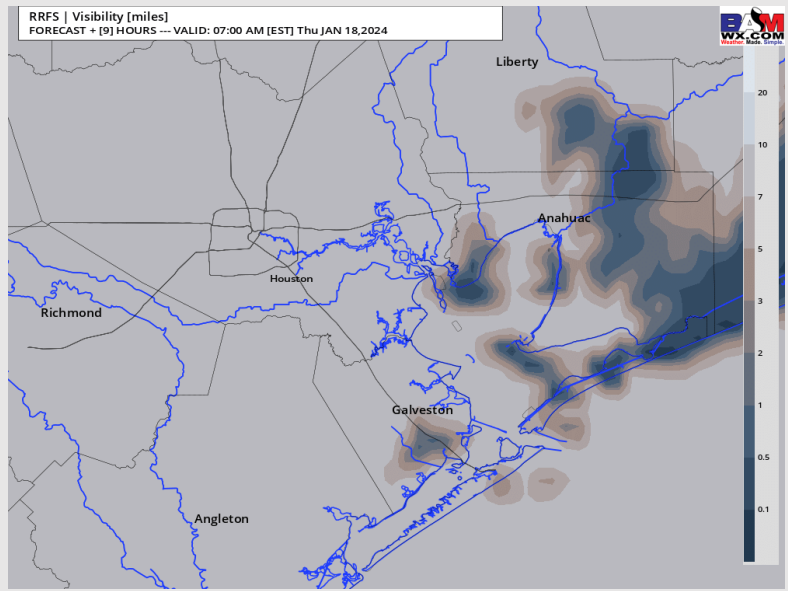
Houston Pilots Visibility Report



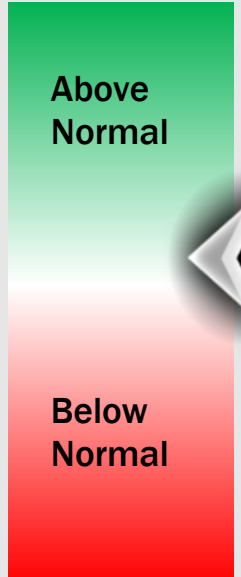
CURRENT VISIBILITY



7 AM CT THU VISIBILITY



Confidence



TIMEFRAME DISCUSSED	THREAT
Now – 9 AM CT THU	LOW

- Lower confidence in terms of coverage of reduced visibility, but favoring patchy fog / drizzle to be possible.
- Reduced visibilities of 1 – 3 miles favored. Not favoring visibilities to drop further down or become dense with high confidence given the patchier nature of the activity.
- Patchy drizzle / fog risk will be ongoing through ~ 9 AM-CT.
- Stations N of Morgan’s Point will have the best potential of this risk. Stations S of Morgan’s Point will still see potential for drizzle, but visibilities are expected to remain above 3 miles.

Houston Pilots Extended Range Visibility Report



Sunday 1/21/24

No visibility concerns for Sunday

Forecast Confidence



Tuesday 1/23/24

Keeping an eye on potential for sea fog during the evening hours. Low confidence on timing.

Forecast Confidence



Monday 1/22/24

No visibility concerns for Monday

Forecast Confidence



Chance for Fog

Sunday AM	Unlikely
Sunday PM	Unlikely
Monday AM	Unlikely
Monday PM	Unlikely
Tuesday AM	Unlikely
Tuesday PM	Possible

Houston Pilots Visibility Chart (miles)



Time	Thu 2am	Thu 3am	Thu 4am	Thu 5am	Thu 6am	Thu 7am	Thu 8am	Thu 9am	Thu 10am	Thu 11am	Thu 12pm	Thu 1pm	Thu 2pm	Thu 3pm	Thu 4pm	Thu 5pm	Thu 6pm	Thu 7pm	Thu 8pm	Thu 9pm	Thu 10pm	Thu 11pm	Fri 12am	Fri 1am	Fri 2am	Fri 3am	Fri 4am	Fri 5am	Fri 6am	Fri 7am	Fri 8am	Fri 9am	Fri 10am	Fri 11am	Fri 12pm	Fri 1pm	
610 Bridge	7	7	7	6	6	5	4	6	7	10	10	10	10	10	10	10	10	10	10	8	9	10	10	10	10	10	10	10	10	10	10	10	10	10	10	10	10
Kinder 1	9	7	8	6	6	5	4	6	7	10	10	10	10	10	10	10	10	10	10	8	9	10	10	10	10	10	10	10	10	10	10	10	10	10	10	10	10
Greens Bayou	9	7	7	6	6	5	4	6	7	10	10	10	10	10	10	10	10	10	10	9	9	10	10	10	10	10	10	10	10	10	10	10	10	10	10	10	10
Shell Crude	10	7	9	6	6	6	4	6	7	10	10	10	10	10	10	10	10	10	10	8	9	10	10	10	10	10	10	10	10	10	10	10	10	10	10	10	10
Lynchburg Ferries	10	7	7	6	5	5	4	5	7	10	10	10	10	10	10	10	10	10	10	8	9	10	10	10	10	10	10	10	10	10	10	10	10	10	10	10	10
Exxon 3	10	7	9	6	7	5	4	5	7	10	10	10	10	10	10	10	10	10	10	8	9	9	10	10	10	10	10	10	10	10	10	10	10	10	10	10	10
Morgans Point	10	9	9	6	10	5	4	6	7	10	10	10	10	10	10	10	10	10	10	8	9	8	10	10	10	10	10	10	10	10	10	10	10	10	10	10	10
75/76	10	9	9	6	10	6	4	6	7	10	10	10	10	10	10	10	10	10	10	8	9	8	9	10	10	10	10	10	10	10	10	10	10	10	10	10	10
63/64	10	9	9	6	10	6	4	6	7	10	10	10	10	10	10	10	10	10	10	8	9	8	8	10	10	10	10	10	10	10	10	10	10	10	10	10	10
51/52	10	10	8	6	10	6	4	6	7	10	10	10	10	10	10	10	10	10	10	8	9	8	8	10	10	10	10	10	10	10	10	10	10	10	10	10	10
37/38	10	10	6	6	9	6	4	5	7	10	10	10	10	10	10	10	10	10	9	8	8	8	8	10	10	10	10	10	10	10	10	10	10	10	10	10	10
25/26	10	10	6	6	9	6	4	5	7	9	10	10	10	10	10	10	10	10	9	8	7	8	8	10	10	10	10	10	10	10	10	10	10	10	10	10	10
11/12	10	10	6	7	9	6	4	5	7	9	10	10	10	10	10	10	10	10	9	8	7	8	8	10	10	10	10	10	10	10	10	10	10	10	10	10	10
1 & 2 Bravo	10	6	6	7	8	6	4	5	7	9	8	9	10	10	10	10	9	9	7	8	7	8	8	10	10	10	10	10	10	10	10	10	10	10	10	10	10

NOTE: This is automated data that may/may not agree with the official BAM thinking that's found on the daily slides or special visibility report slides. This data should be used as a guide only

Houston Pilots Wind Chart



Forecast Confidence



Example

Sustained wind 13 Knots
Gusts 18 Knots
Wind from the N

WS: 13
G:18
N

Time Knots	Thu 2am	Thu 3am	Thu 4am	Thu 5am	Thu 6am	Thu 7am	Thu 8am	Thu 9am	Thu 10am	Thu 11am	Thu 12pm	Thu 1pm	Thu 2pm	Thu 3pm	Thu 4pm	Thu 5pm	Thu 6pm	Thu 7pm	Thu 8pm	Thu 9pm	Thu 10pm	Thu 11pm	Fri 12am	Fri 1am	Fri 2am	Fri 3am	Fri 4am	Fri 5am	Fri 6am	Fri 7am	Fri 8am	Fri 9am	Fri 10am	Fri 11am	Fri 12pm	Fri 1pm
610 Bridge	2	2	2	3	3	3	4	7	8	10	12	12	11	11	9	7	4	4	3	2	2	3	3	4	6	8	10	11	13	15	15	16	14	13	13	12
	4	3	3	4	4	5	7	10	12	16	19	19	17	16	14	11	7	6	5	4	4	4	5	6	9	12	15	17	20	23	23	24	21	20	19	18
Kinder 1	3	2	3	3	3	4	5	7	8	10	12	12	11	11	9	7	4	4	3	2	2	3	3	4	6	8	9	11	13	15	15	16	14	13	13	12
	4	3	3	4	4	5	7	10	12	15	18	19	17	16	14	11	7	6	5	4	4	4	5	6	9	12	15	16	20	23	22	24	21	19	19	18
Greens Bayou	3	2	3	3	3	4	4	7	8	10	12	12	11	10	9	7	4	4	3	3	3	3	4	5	8	9	10	13	14	14	16	14	13	13	13	
	4	3	4	4	4	6	7	10	12	15	18	18	17	16	14	11	7	6	5	4	4	5	5	6	9	12	14	16	20	22	22	24	21	19	19	17
Shell Crude	3	3	3	3	3	4	5	7	8	9	11	12	11	10	9	7	5	4	3	3	3	3	4	6	7	9	10	13	14	14	16	14	14	13	13	
	4	4	4	4	5	6	7	10	12	14	17	18	17	16	14	11	7	6	5	4	4	5	5	6	9	11	14	16	19	21	21	24	21	19	18	17
Lynchburg Ferries	3	3	3	3	3	4	5	7	8	9	11	12	11	10	9	7	5	4	4	3	3	3	4	6	8	10	11	13	14	14	16	14	14	14	13	
	4	4	4	4	5	6	7	10	11	14	17	18	17	16	14	11	7	6	5	5	5	5	6	8	11	14	15	19	21	21	23	20	19	19	17	
Exxon 3	4	3	3	4	4	4	5	7	7	8	10	11	11	11	9	7	5	4	4	4	4	4	5	7	9	11	14	15	18	20	20	23	20	19	18	17
	5	5	5	5	5	6	7	10	11	13	15	17	16	16	14	11	7	6	6	5	5	5	5	7	9	11	14	15	18	20	20	23	20	19	18	17
Morgans Point	4	4	4	4	4	5	6	7	8	8	9	11	10	11	10	8	6	5	5	4	4	4	5	7	9	11	12	14	16	15	16	15	15	14	14	
	6	5	5	5	6	7	8	10	11	12	14	16	16	16	14	11	8	7	6	5	6	5	6	7	9	12	14	16	19	21	21	23	20	19	18	17
75/76	6	4	5	5	5	6	7	8	8	8	9	10	10	10	9	8	7	6	5	5	5	5	6	8	10	13	16	18	19	19	19	18	17	16	15	
	7	5	6	6	6	7	9	10	11	12	13	14	15	15	14	11	9	7	7	6	6	6	6	7	10	12	15	18	21	22	22	24	21	21	19	19
63/64	6	5	5	5	5	6	8	8	8	8	8	8	9	10	10	9	8	7	6	5	5	5	6	7	8	10	14	18	21	22	22	22	20	19	17	17
	7	5	6	6	6	7	9	10	11	11	12	13	14	14	14	11	9	8	7	6	6	6	6	7	9	12	16	19	23	24	24	25	23	22	20	20
51/52	6	5	5	5	5	6	7	8	8	7	8	8	8	9	9	9	8	7	6	5	5	5	6	7	10	14	17	20	22	22	22	22	21	20	18	17
	6	5	6	6	6	7	8	10	11	11	12	12	13	13	13	10	9	8	7	6	6	6	6	7	8	11	15	19	23	24	25	26	24	22	21	20
37/38	6	5	5	5	5	6	7	8	8	8	8	8	8	8	8	8	7	6	5	5	5	5	6	7	10	13	16	20	22	22	23	21	20	19	18	
	7	5	5	6	6	7	8	10	11	11	11	11	12	12	12	10	9	7	6	6	6	6	6	8	11	15	19	22	24	25	26	25	23	21	20	18
25/26	6	5	5	5	5	6	7	7	8	8	8	8	8	8	8	8	6	5	5	4	4	5	6	6	9	12	15	18	20	21	21	20	19	18	17	
	7	6	6	6	6	7	8	9	10	11	11	11	11	11	11	9	9	8	6	6	6	6	6	7	8	11	15	18	22	24	26	27	25	23	21	20
11/12	7	6	6	6	6	6	7	8	8	8	8	7	7	7	7	8	8	7	6	5	5	5	6	7	9	12	15	17	19	20	21	20	19	18	17	
	8	7	7	7	7	8	9	10	10	11	11	10	10	10	10	10	8	7	6	6	6	6	6	7	9	11	15	18	21	24	26	26	25	22	20	19
1 & 2 Bravo	10	8	8	8	8	8	9	9	9	8	8	7	7	7	9	10	10	10	8	8	7	6	7	8	9	12	15	19	21	23	25	25	24	22	21	19
	11	9	9	9	9	9	10	10	11	11	11	9	9	10	11	11	12	11	9	8	8	7	7	9	10	13	17	20	23	26	27	28	26	24	23	21

NOTE: This is automated data that may/may not agree with the official BAM thinking that's found on the daily slides or special visibility report slides. This data should be used as a guide only

Houston Pilots: Thu. 01/18/2024



Forecast Discussion

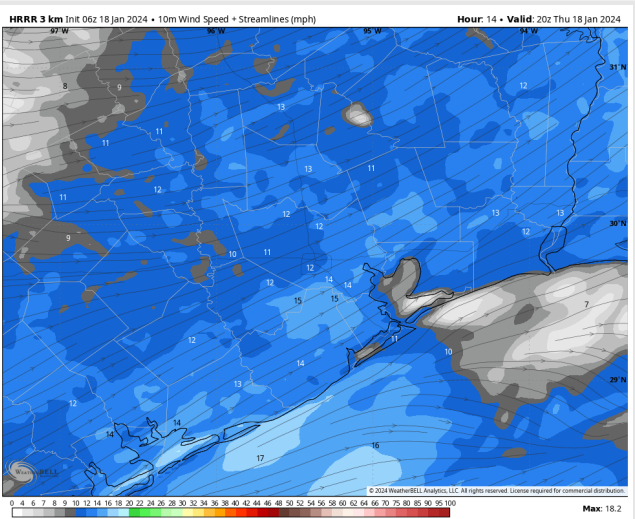
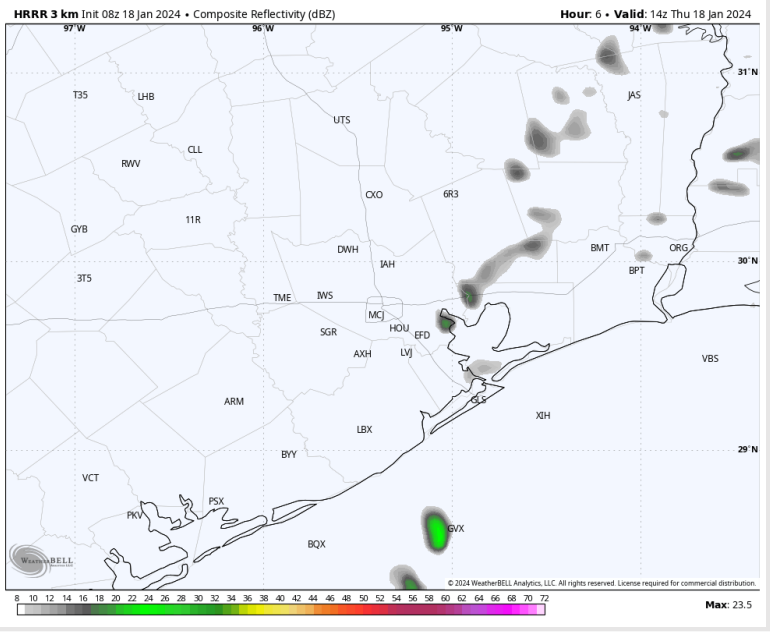
Precip: Light drizzle will be possible during the early AM hours for all locations, however favoring dry conditions after 9AM.

Wind: Winds will begin out of the SW, becoming WSW by 9AM and remaining there for the remainder of the day. **N Morgan's Point:** Winds will be at 6-11 kts through 11AM before increasing to 9 – 14 through the evening. After 7PM, favoring winds to calm to 3 – 6 kts. **S of Morgan's Point:** Winds will be at 13-17 kts through 7 AM before decreasing to 7-12 kts for the PM hours for the remainder of the day.

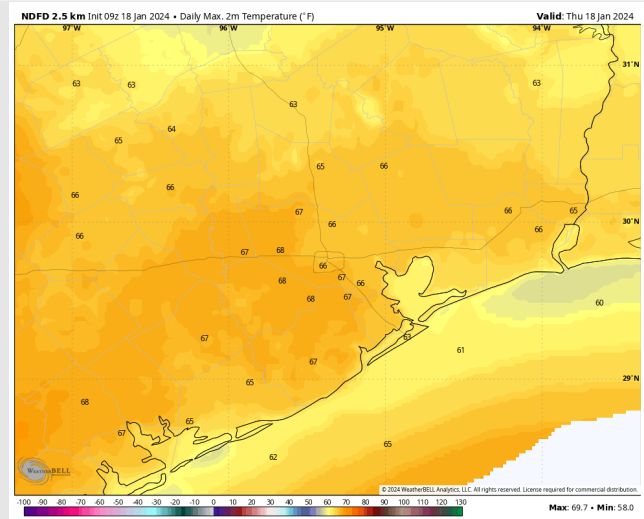
High Temps: Warm Outlook for Today. **N of Morgan's Point:** Mid to Upper 60s F. **S of Morgan's Point:** Low 60s F.

Visibility: Reduced visibilities of 2-4 miles as a result of drizzle possible

Precip Image: 8 AM CT



**Wind Speed:
2 PM CT**



**High Temps
Today**

Houston Pilots: Fri. 01/19/2024



Forecast Discussion

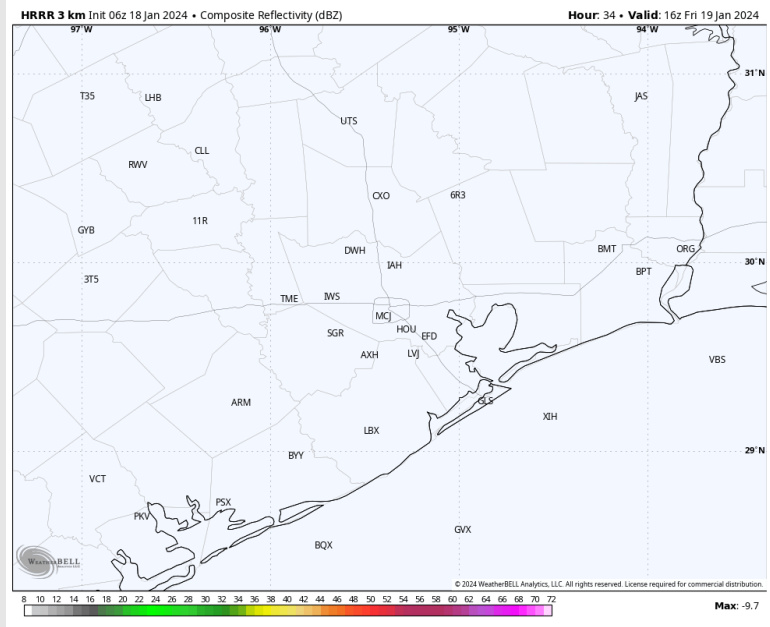
Precip: Favoring dry conditions for Friday.

Wind: Winds will begin out of the NW and veer out of the NE by 8AM. **N Morgan's Point:** 5-10 kt winds will increase to 12 – 16 kts after 7AM, and remain there for the rest of the day. **Gusts of 20-25 kts in play N of Morgan's Point through 6 PM.** **S of Morgan's Point:** 12 – 15 kt winds will increase to 18 – 22kts by 8 AM, with winds at the board station reaching closer to 20-24 kts. Winds after 4PM will gradually decrease to 16 – 20 kts (including boarding station). **Gusts of 25 - 30 kts will be in play for Stations S of Morgan's Point through 6 PM.** Boarding station will see gusts closer to 30 – 35kts.

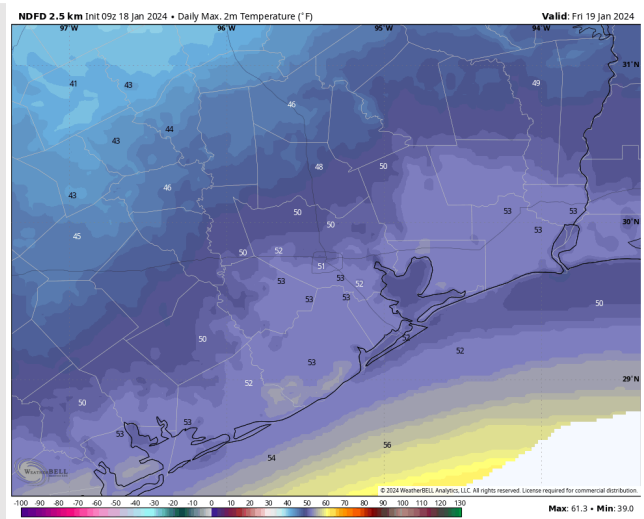
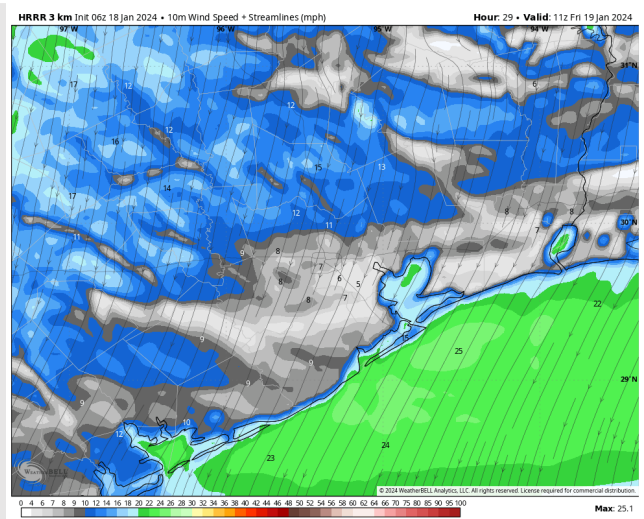
High Temps: **N of Morgan's Point:** Mid 50's. **S of Morgan's Point:** Low to mid 50s F.

Visibility: Keeping an eye on a low end patchy fog risk early Friday AM prior to the arrival of the front.

Precip Image: 10 AM CT



Wind Speed:
5 AM CT



High Temps
Friday

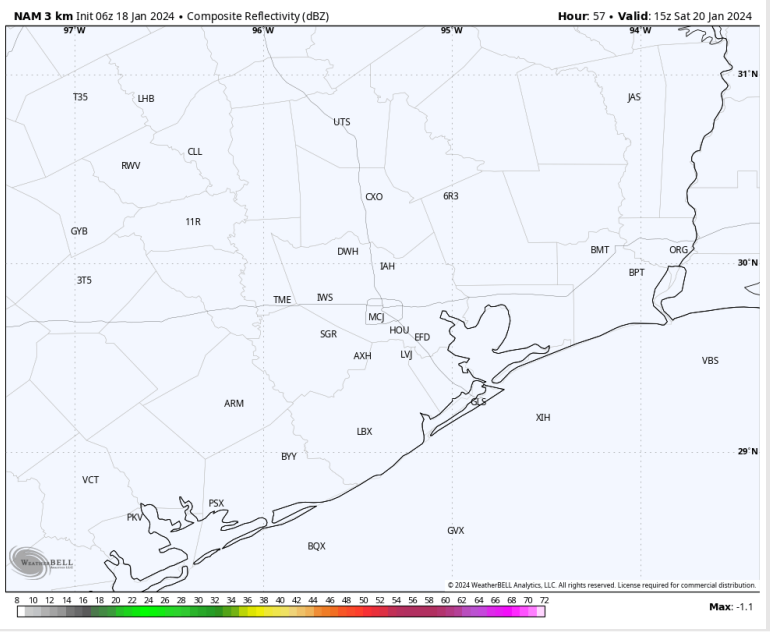
Houston Pilots: Sat. 01/20/2024



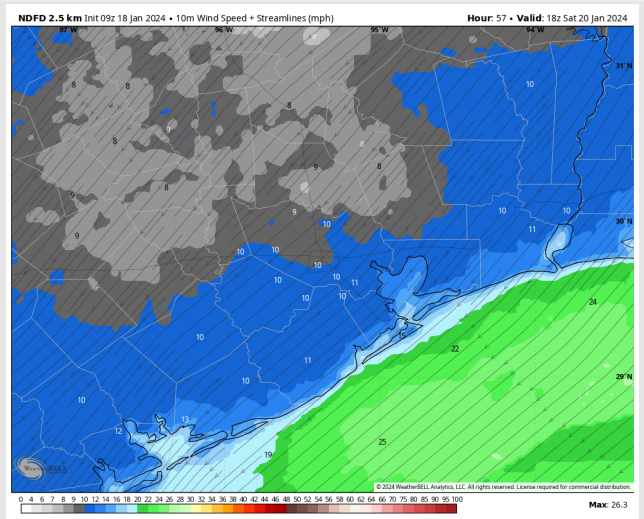
Forecast Discussion

- Precip:** Favoring dry conditions for Saturday.
- Wind:** Winds expected to remain out of the NE through the late afternoon before veering out of the ENE. **N of Morgan's Point:** 6 - 9 kts throughout the entire day. **S of Morgan's Point:** 8 - 14 kts through the rest of the day. Slightly higher winds towards 20 kts near the Boarding Station before 3PM.
- High Temps:** Cool Down given Passage of Front **N of Morgan's Point:** Mid 40s **S of Morgan's Point:** Mid 40s F
- Visibility:** No visibility concerns for Saturday.

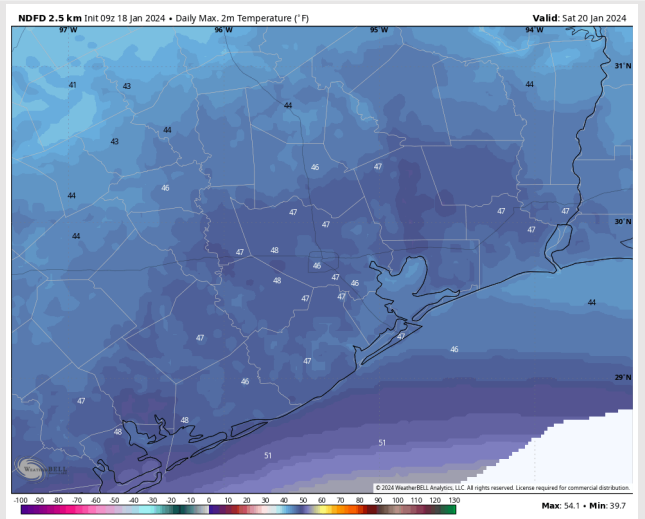
Precip Image: 4 PM CT



Wind Speed:
12 PM CT

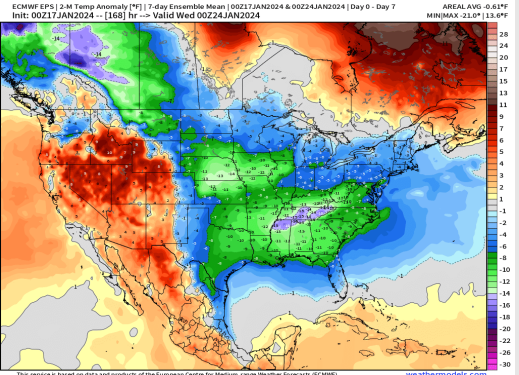


High Temps
Saturday

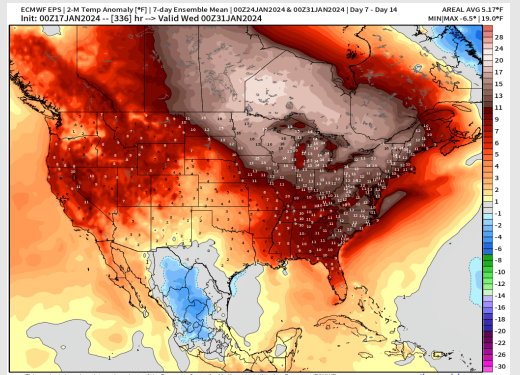


Houston Pilots: 1/18/24

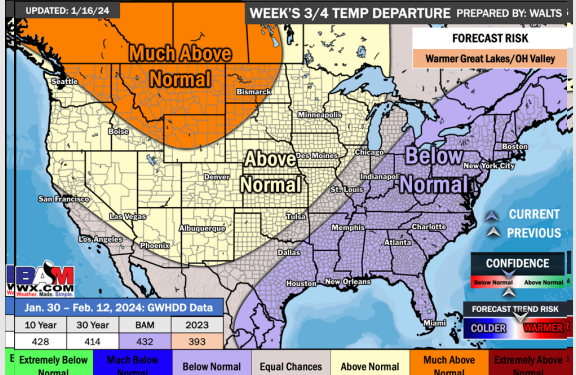
Next 7 Day Temperature Departure



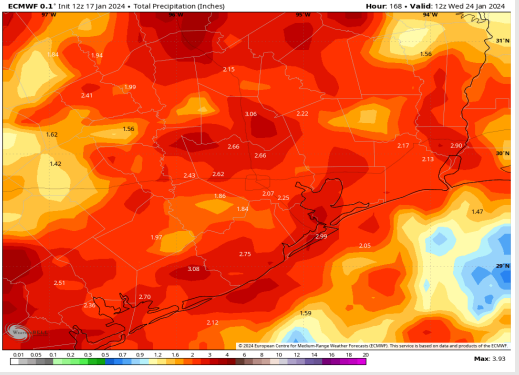
8-14 Day Temperature Departure



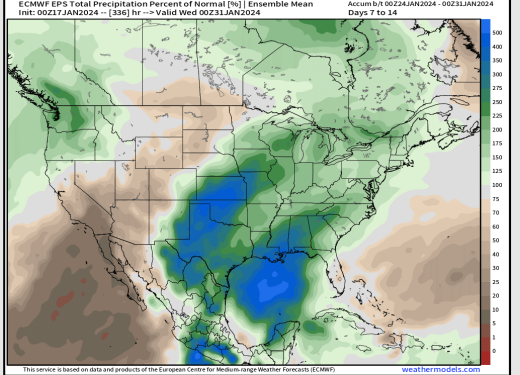
15-30 Day Temperature Departure



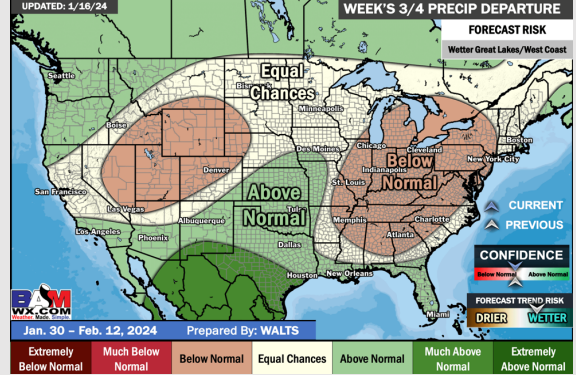
Next 7 Day Total Precipitation



8-14 Day % of Average Precip.



15-30 Day % of Average Precip.



- Outside of minor chances THU, looking at MON for the next chance of significant rain. Much below normal temperatures favored for the week ahead.
- Above normal rain chances are expected for the week 2 timeframe. Temps expected to warm up becoming above normal for the week 2 timeframe after a very cold stretch the week prior.
- Below normal temperatures and above normal chances for precipitation are favored in the weeks 3/4 timeframe.