

Houston Pilots Forecast Package



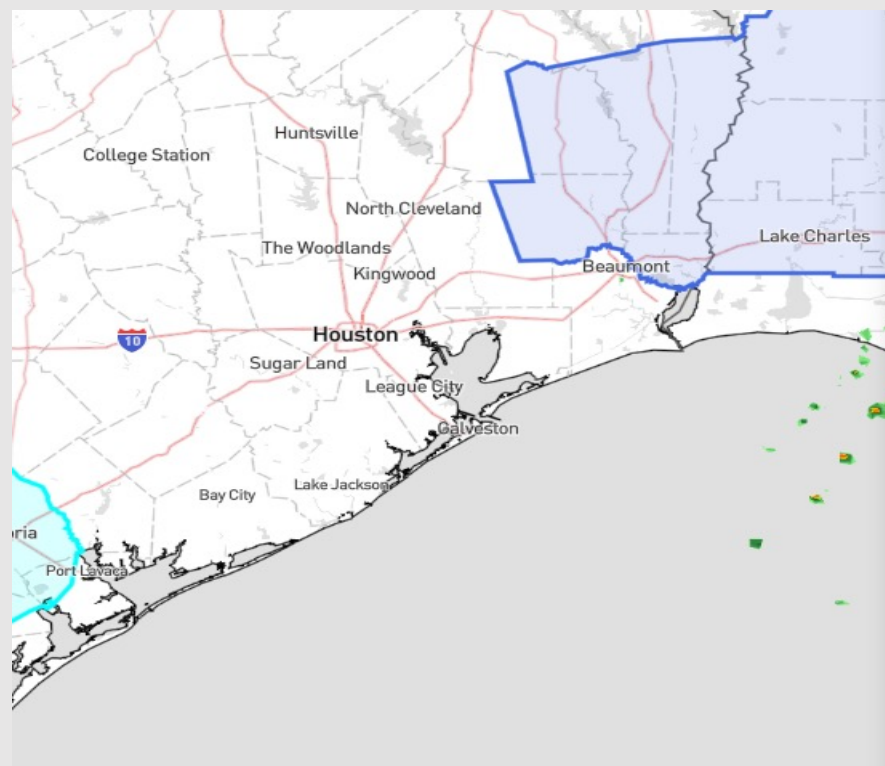
Updated: 2:45 PM CT

Thursday, January 18, 2024

Forecaster: Jonathan Kipper

Weather Headlines

- Patchy to widespread fog will work into the area this evening and last into FRI AM. See Visibility Slide for Additional Details
- No precip chances are favored for this upcoming weekend.
- Front passage on Friday morning will result in some gusty winds of locally up to 32 kts for the boating station.



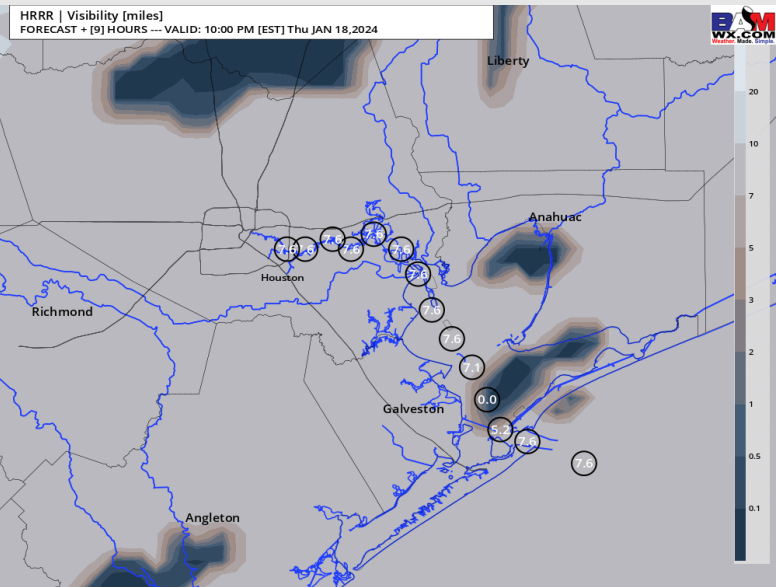
Radar/NWS Alerts: 2:40 PM CT



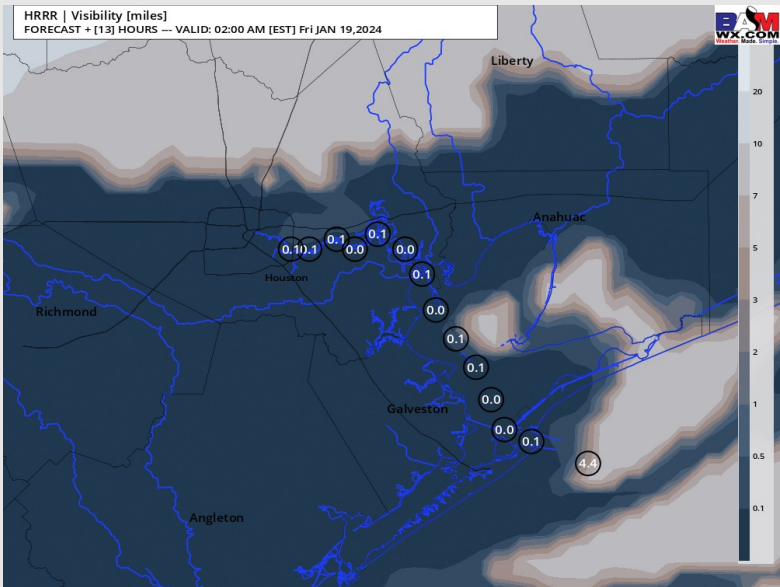
As always, please do not hesitate to reach out to us with any forecast questions via the chat option on the Weather Porthole or our on-call number, **(317)-560-8122** press 1 for forecast questions.

Houston Pilots Visibility Report

9 PM CT THU VISIBILITY



1 AM CT FRI VISIBILITY



Confidence

Above
Normal

Below
Normal

TIMEFRAME DISCUSSED

THREAT

7 PM CT THU-5 AM CT FRI

Med

- There is increasing confidence that patchy / patchy dense fog will work back into the area this PM with the risk continuing into the early AM tomorrow (Friday) due to a brief calming of the winds.
- Anticipating visibility will be reduced to 1 - 3 miles in a patchy fashion for all stations as early as 7 PM, with a few locally dense pockets reducing visibility down to 1 mile or less at times.
- The risk for reduced visibility is favored to peak between 11 PM - 2 AM-CT, becoming the most widespread and dense for all stations. Visibility of less than 1 mile cannot be ruled out for that timeframe.
- Expecting the front moving through early Friday AM to gradually clear for out of the area from N to S, clearing up visibility for all locations by ~5 AM-CT Fri.

Houston Pilots Extended Range Visibility Report



Sunday 1/21/24

No visibility concerns for Sunday

Forecast Confidence



Tuesday 1/23/24

Keeping an eye on potential for sea fog during the evening hours. Low confidence on timing.

Forecast Confidence



Monday 1/22/24

No visibility concerns for Monday

Forecast Confidence



Chance for Fog

Sunday AM	Unlikely
Sunday PM	Unlikely
Monday AM	Unlikely
Monday PM	Unlikely
Tuesday AM	Unlikely
Tuesday PM	Possible

Houston Pilots Visibility Chart (miles)



Forecast Confidence

Above
Normal

Below
Normal

Time	Thu 1pm	Thu 2pm	Thu 3pm	Thu 4pm	Thu 5pm	Thu 6pm	Thu 7pm	Thu 8pm	Thu 9pm	Thu 10pm	Thu 11pm	Fri 12am	Fri 1am	Fri 2am	Fri 3am	Fri 4am	Fri 5am	Fri 6am	Fri 7am	Fri 8am	Fri 9am	Fri 10am	Fri 11am	Fri 12pm	Fri 1pm	Fri 2pm	Fri 3pm	Fri 4pm	Fri 5pm	Fri 6pm	Fri 7pm	Fri 8pm	Fri 9pm	Fri 10pm	Fri 11pm	Sat 12am
610 Bridge	10	10	10	10	10	10	10	10	10	8	6	0.48	10	10	10	10	10	10	10	10	10	10	10	10	10	10	10	10	10	10	10	10	10	10	10	10
Kinder 1	10	10	10	10	10	10	10	10	10	8	6	0.48	10	10	10	10	10	10	10	10	10	10	10	10	10	10	10	10	10	10	10	10	10	10	10	10
Greens Bayou	10	10	10	10	10	10	10	10	10	8	6	0.48	10	10	10	10	10	10	10	10	10	10	10	10	10	10	10	10	10	10	10	10	10	10	10	10
Shell Crude	10	10	10	10	10	10	10	10	10	8	6	1	10	10	10	10	10	10	10	10	10	10	10	10	10	10	10	10	10	10	10	10	10	10	10	10
Lynchburg Ferries	10	10	10	10	10	10	10	10	10	8	6	1	10	10	10	10	10	10	10	10	10	10	10	10	10	10	10	10	10	10	10	10	10	10	10	10
Exxon 3	10	10	10	10	10	10	10	10	10	8	6	1	8	10	10	10	10	10	10	10	10	10	10	10	10	10	10	10	10	10	10	10	10	10	10	10
Morgans Point	10	10	10	10	10	10	10	10	10	8	6	1	6	10	10	10	10	10	10	10	10	10	10	10	10	10	10	10	10	10	10	10	10	10	10	10
75/76	10	10	10	10	10	10	10	10	9	8	6	2	6	10	10	10	10	10	10	10	10	10	10	10	10	10	10	10	10	10	10	10	10	10	10	10
63/64	10	10	10	10	10	10	10	10	9	8	7	5	1	10	10	10	10	10	10	10	10	10	10	10	10	10	10	10	10	10	10	10	10	10	10	10
51/52	10	10	10	10	10	10	10	10	10	8	8	8	1	5	10	10	10	10	10	10	10	10	10	10	10	10	10	10	10	10	10	10	10	10	10	10
37/38	10	10	10	10	10	10	10	10	10	8	8	10	6	0.97	10	10	10	10	10	10	10	10	10	10	10	10	10	10	10	10	10	10	10	10	10	10
25/26	10	10	10	10	10	10	10	10	10	8	8	10	10	2	6	10	10	10	10	10	10	10	10	10	10	10	10	10	10	10	10	10	10	10	10	10
11/12	10	10	10	10	10	10	10	10	10	8	8	10	10	2	6	10	10	10	10	10	10	10	10	10	10	10	10	10	10	10	10	10	10	10	10	10
1 & 2 Bravo	10	10	10	10	10	10	10	10	7	6	6	8	10	7	8	9	10	10	10	10	10	10	10	10	10	10	10	10	10	10	10	10	10	10	10	10

NOTE: This is automated data that may/may not agree with the official BAM thinking that's found on the daily slides or special visibility report slides. This data should be used as a guide only

Houston Pilots Wind Chart



Forecast Confidence

Above Normal

Below Normal

Sustained wind 13 Knots

Gusts 18 Knots

Wind from the N

Example

WS: 13
G:18
N

Time Knots	Thu 1pm	Thu 2pm	Thu 3pm	Thu 4pm	Thu 5pm	Thu 6pm	Thu 7pm	Thu 8pm	Thu 9pm	Thu 10pm	Thu 11pm	Fri 12am	Fri 1am	Fri 2am	Fri 3am	Fri 4am	Fri 5am	Fri 6am	Fri 7am	Fri 8am	Fri 9am	Fri 10am	Fri 11am	Fri 12pm	Fri 1pm	Fri 2pm	Fri 3pm	Fri 4pm	Fri 5pm	Fri 6pm	Fri 7pm	Fri 8pm	Fri 9pm	Fri 10pm	Fri 11pm	Sat 12am	
610 Bridge	10 15	9 14	9 14	9 14	7 11	4 7	3 5	3 4	2 3	2 3	2 3	3 5	4 6	6 9	8 13	9 15	11 17	12 18	13 20	13 14	14 22	13 20	13 19	13 19	13 18	12 17	11 16	11 16	11 10	9 15	9 14	9 14	9 14	9 14	9 14	9 14	9 13
	WSW	WSW	WSW	SW	SW	SW	SW	SW	WSW	W	NW	NNW	NNW	N	N	N	N	N	N	N	N	N	N	N	N	N	N	N	N	N	N	N	NNE	NNE	NNE	NNE	
Kinder 1	9 14	9 14	9 14	9 14	7 11	4 7	3 5	3 4	2 3	2 3	2 3	3 5	4 6	6 9	8 13	9 14	11 17	12 19	13 20	13 22	14 20	13 19	13 18	13 18	12 18	12 16	11 17	11 15	11 15	14 14	14 14	14 14	14 14	14 14	14 14	14 13	
	WSW	WSW	WSW	SW	SW	SW	SW	SW	WSW	W	NW	NNW	NNW	N	N	N	N	N	N	N	N	N	N	N	N	N	N	N	N	N	N	N	NNE	NNE	NNE	NNE	
Greens Bayou	9 14	9 14	9 13	9 14	7 11	4 7	3 5	3 4	2 3	2 4	2 3	3 5	4 6	6 9	8 12	9 14	11 16	11 19	12 20	13 22	14 20	13 18	13 18	13 18	12 18	12 16	11 17	11 16	11 15	9 14	9 14	9 14	9 14	9 14	9 13	9 13	
	WSW	WSW	WSW	SW	SW	SW	SW	WSW	WSW	W	NW	NNW	NNW	N	NE	N	N	N	N	N	N	N	N	N	N	N	N	N	N	N	N	N	NNE	NNE	NNE	NNE	
Shell Crude	9 13	9 13	8 13	8 14	7 11	5 7	4 6	3 5	2 4	2 4	2 3	3 5	4 6	6 9	8 12	9 14	11 16	11 17	12 19	13 20	14 22	13 18	13 18	13 18	12 18	12 16	12 16	12 16	11 15	9 14	9 14	9 14	9 14	9 14	9 13	9 13	
	WSW	WSW	WSW	SW	SW	SW	SW	WSW	WSW	W	NW	NNW	NNW	N	ESE	N	N	N	N	N	N	N	N	N	N	N	N	N	N	N	N	N	NNE	NNE	NNE	NNE	
Lynchburg Ferries	9 13	9 13	8 13	8 13	7 11	5 7	4 6	3 5	3 4	3 4	3 4	4 5	5 6	6 9	8 12	10 14	11 16	12 17	12 18	13 19	15 21	14 20	14 18	14 18	13 18	13 17	12 16	12 16	13 16	12 14	10 14	10 14	10 14	10 14	10 14	10 13	9 13
	WSW	WSW	WSW	SW	SW	SW	SW	WSW	WSW	W	NW	NNW	NNW	N	SSW	N	N	N	N	N	N	N	N	N	N	N	N	N	N	N	N	N	N	N	NNE	NNE	
Exxon 3	8 12	8 12	8 12	8 13	7 11	5 7	4 6	4 5	3 5	3 5	3 5	4 6	5 6	7 9	9 12	10 15	11 16	12 17	13 18	13 19	15 21	14 18	14 18	14 18	13 18	13 17	13 16	13 16	12 15	11 14	10 14	10 14	10 14	10 14	10 13	9 13	
	WSW	WSW	WSW	SW	SW	SW	SW	WSW	WSW	W	NW	NNW	NNW	N	NW	N	N	N	N	N	N	N	N	N	N	N	N	N	N	N	N	N	N	NNE	NNE	NNE	NNE
Morgans Point	8 12	8 12	8 12	8 12	8 11	6 7	5 7	4 6	4 5	4 5	3 5	4 6	5 7	7 9	10 13	12 15	13 17	14 18	14 19	15 22	16 19	15 18	14 18	14 18	14 18	14 18	13 17	13 17	13 17	12 15	12 15	12 15	12 15	12 15	11 14	11 14	
	WSW	WSW	WSW	SW	SW	SW	SW	WSW	WSW	W	WNW	NW	NNW	N	W	N	N	N	N	N	N	N	N	N	N	N	N	N	N	N	N	N	NNE	NNE	NNE	NNE	
75/76	7 11	8 12	8 12	8 12	9 11	10 9	8 7	6 5	5 4	5 5	4 5	5 6	6 7	8 9	12 13	15 17	16 19	17 20	18 21	18 23	19 20	17 20	16 18	15 19	15 19	15 18	15 18	16 18	16 18	15 18	15 18	16 18	16 18	16 18	16 17	15 17	
	WSW	WSW	WSW	SSW	SSW	SW	SW	WSW	WSW	W	WNW	NW	NNW	N	SSE	N	N	N	N	N	N	N	N	N	N	N	N	N	N	N	N	N	NNE	NNE	NNE	NNE	
63/64	6 10	7 10	7 10	7 11	8 11	10 9	8 7	6 5	5 4	5 5	4 5	5 6	6 7	8 9	12 13	16 17	18 20	19 21	20 23	21 23	22 24	19 21	19 21	19 19	17 19	16 19	16 18	16 18	17 19	17 18	17 19	18 19	18 19	18 19	18 20	18 20	18 20
	WSW	WSW	WSW	SW	SSW	SW	SW	WSW	WSW	W	WNW	NW	NNW	N	ENE	N	N	N	N	NNE	NNE	NNE	NNE	NNE	NNE	NNE	NNE	NNE	NNE	NNE	NNE	NNE	NNE	NNE	NNE	NNE	
51/52	6 9	6 9	7 9	7 10	7 11	8 9	6 7	5 6	4 5	4 5	4 5	4 5	6 7	8 9	11 12	15 16	17 19	19 21	20 23	21 25	22 22	19 21	18 20	17 19	17 18	16 18	16 18	17 18	17 18	17 18	17 18	17 18	17 18	18 19	18 19	18 20	18 20
	WSW	WSW	WSW	SW	SSW	SW	SW	WSW	WSW	W	WNW	NW	NNW	N	NNE	N	N	N	NNE	NNE	NNE	NNE	NNE	NNE	NNE	NNE	NNE	NNE	NNE	NNE	NNE	NNE	NNE	NNE	NNE	NNE	
37/38	6 9	6 9	7 9	7 9	8 10	8 7	6 5	5 4	4 5	4 5	4 5	5 6	6 7	7 8	10 12	14 15	17 18	19 21	21 23	22 24	20 25	19 23	18 22	18 20	17 19	16 19	16 18	16 18	16 18	16 18	16 18	17 18	17 18	18 19	18 20	18 20	18 20
	WSW	WSW	WSW	SW	SSW	SSW	SW	WSW	WSW	W	W	NW	NNW	NNW	S	N	N	N	N	NNE	NNE	NNE	NNE	NNE	NNE	NNE	NNE	NNE	NNE	NNE	NNE	NNE	NNE	NNE	NNE	NNE	
25/26	6 8	6 8	7 8	6 8	8 9	8 7	6 5	5 4	4 5	4 5	4 5	5 6	6 7	8 9	12 15	15 18	18 21	19 23	20 24	21 25	19 24	19 22	18 21	17 20	16 19	16 18	15 18	15 18	15 18	15 18	15 18	16 18	16 18	16 18	16 18	16 18	
	WSW	WSW	WSW	SSW	SSW	SSW	SW	WSW	WSW	W	W	WNW	NNW	NNW	NNW	N	N	N	N	NNE	NNE	NNE	NNE	NNE	NNE	NNE	NNE	NNE	NNE	NNE	NNE	NNE	NNE	NNE	NNE	NNE	
11/12	6 8	6 8	7 8	7 8	8 9	8 10	7 6	5 4	5 5	5 6	5 6	6 7	7 8	8 12	12 15	14 18	17 21	18 22	19 24	20 25	19 24	19 22	17 20	16 18	16 18	15 17	15 17	14 16	14 17	15 18	15 18	16 18	16 18	16 18	16 18	16 18	
	WSW	WSW	WSW	SW	SSW	SSW	SW	WSW	WSW	W	W	WNW	NNW	NNW	NNW	N	N	N	N	NNE	NNE	NNE	NNE	NNE	NNE	NNE	NNE	NNE	NNE	NNE	NNE	NNE	NNE	NNE	NNE	NNE	
1 & 2 Bravo	6 8	6 8	7 8	7 9	8 10	9 11	8 7	7 6	6 5	6 7	6 7	7 8	8 9	11 12	15 16	18 20	21 22	22 24	23 25	24 27	23 25	22 24	21 22	19 21	18 20	18 20	18 20	18 20	19 20	19 20	20 21	20 21	21 22	21 22	21 22	21 22	
	WSW	WSW	WSW	WSW	SW	SW	SW	WSW	WSW	W	W	WNW	NNW	NNW	NNW	N	NNE	NNE	NNE	NNE	NNE	NNE	NNE	NNE	NNE	NNE	NNE	NNE	NNE	NNE	NNE	NNE	NNE	NNE	NNE	NNE	

NOTE: This is automated data that may/may not agree with the official BAM thinking that's found on the daily slides or special visibility report slides. This data should be used as a guide only

Houston Pilots: Thu. 01/18/2024

Forecast Discussion

Precip: Dry conditions favored the remainder of the day today.

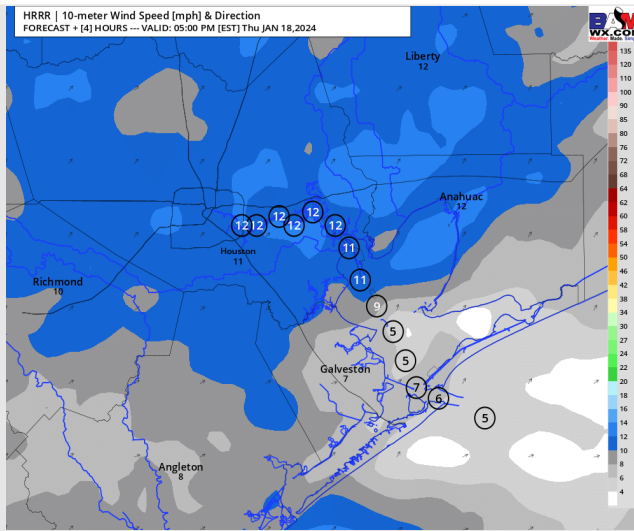
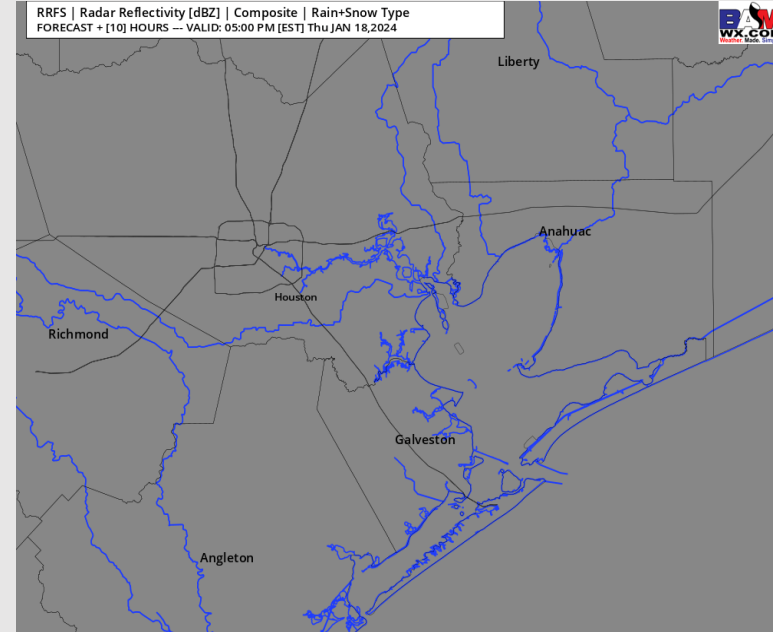
Wind: Winds will remain out of the WSW the rest of today. **N Morgan's Point:** Winds will be at 9 – 14 through the evening. After 7PM, favoring winds to calm to 3 – 6 kts. **Gusts of up to 20-22 kts possible through 6 PM N of Morgan's Point.** **S of Morgan's Point:** Winds will continue at 7-12 kts for the remainder of the day.

Low Temps: **N of Morgan's Point:** Low 40s F. **S of Morgan's Point:** Upper 40s F.

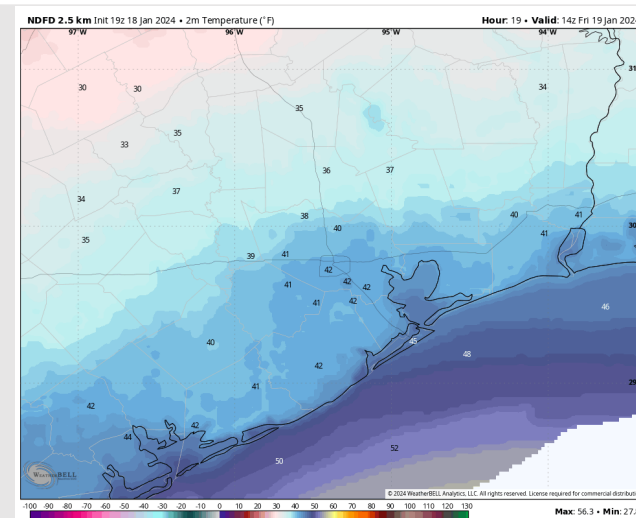
Visibility: Patchy to widespread fog will work into the area later this evening. Check out visibility slide above for more info

Precip Image: 4 PM CT

RRFS | Radar Reflectivity [dBZ] | Composite | Rain+Snow Type
FORECAST + [10] HOURS --- VALID: 05:00 PM [EST] Thu JAN 18, 2024



Wind Speed:
4 PM CT



Low Temps
FRI AM

Houston Pilots: Fri. 01/19/2024

Forecast Discussion

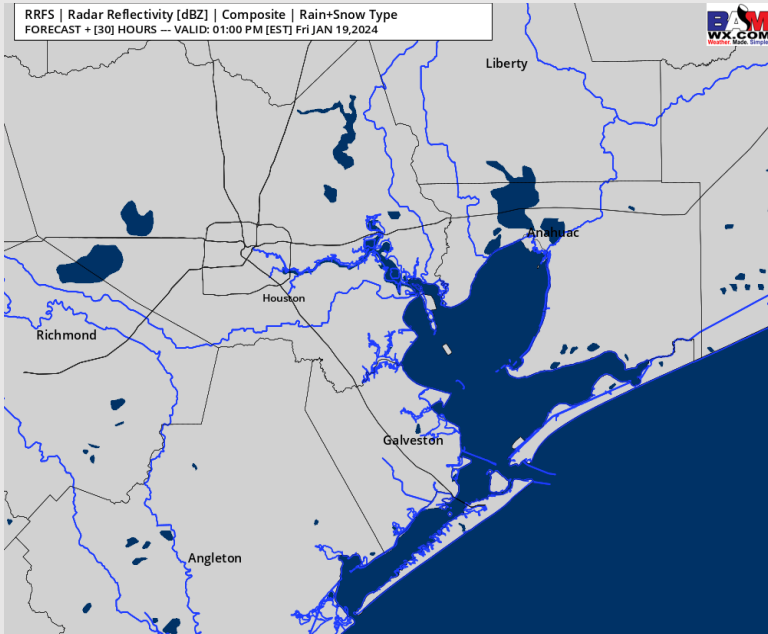
Precip: Favoring dry conditions for Friday.

Wind: Winds will begin out of the SW before quickly shifting to out of the NW by 2 AM and veer out of the NE by 7AM. **N Morgan's Point:** 5-10 kt winds will increase to 11 – 16 kts after 6AM and remain there for the rest of the day. **Gusts of 20-25 kts in play N of Morgan's Point through 6 PM.** **S of Morgan's Point:** 12 – 15 kt winds will increase to 18 – 22kts by 6 AM, with winds at the board station reaching closer to 20-24 kts. Winds after 4PM will gradually decrease to 16 – 20 kts (boarding station remains elevated). **Gusts of 25 - 30 kts will be in play for Stations S of Morgan's Point from 5 AM through 6 PM.** Boarding station will see gusts closer to 28 – 32kts the entire day.

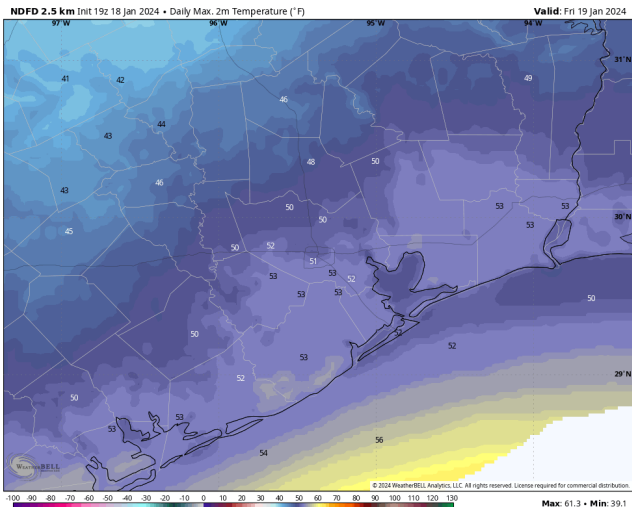
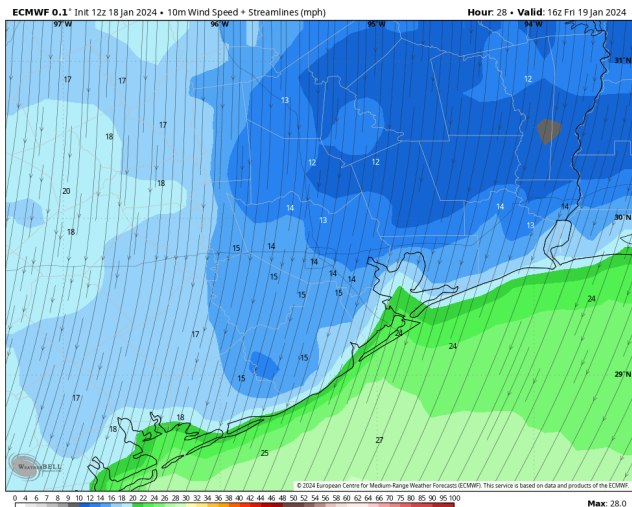
High Temps: **N of Morgan's Point:** Mid 50's F. **S of Morgan's Point:** Low 50s F.

Visibility: Patchy to widespread fog will continue in the area later through early FRI AM. Check out visibility slide above for more info

Precip Image: 12 PM CT



Wind Speed:
10 AM CT



High Temps
Friday

Houston Pilots: Sat. 01/20/2024

Forecast Discussion

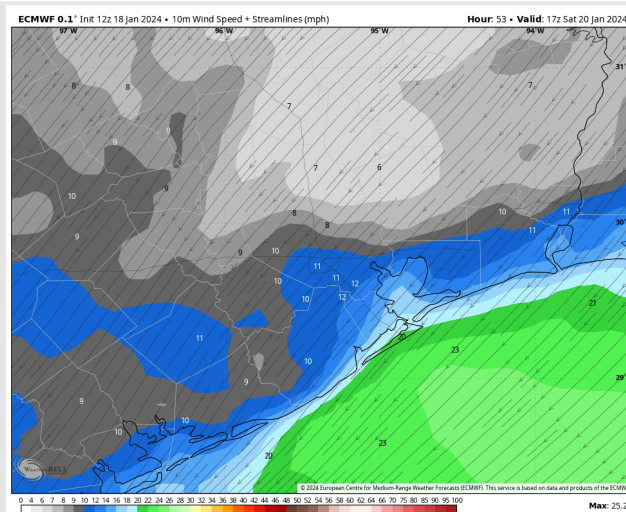
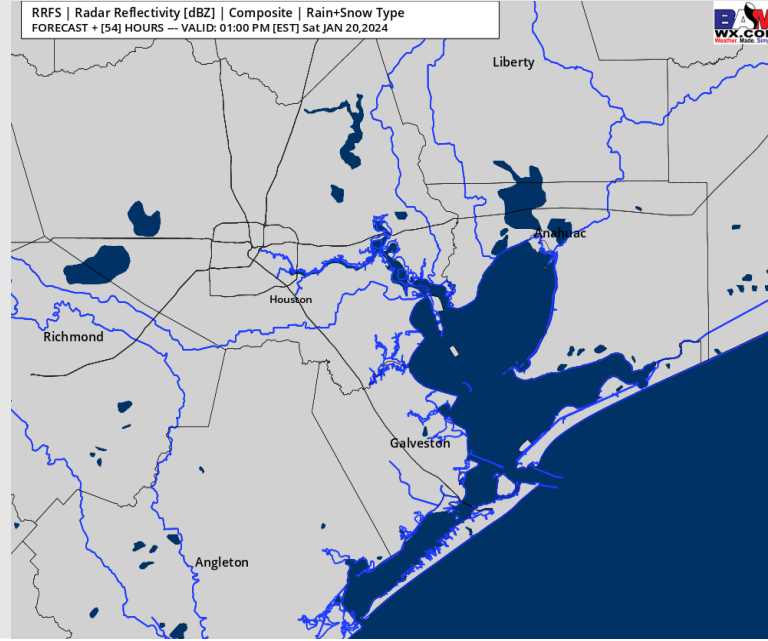
Precip: Favoring dry conditions for Saturday.

Wind: Winds expected to remain out of the NE through the late afternoon before veering out of the ENE ~4 PM. **N of Morgan's Point:** 6 -11 kts through 2 PM before decreasing to 4-9 kts. **S of Morgan's Point:** 10 – 15 kts throughout the day on SAT. Slightly higher winds towards 15-20 kts near the Boarding Station. **Wind gusts of 25-30 kts near the Boarding Station through 2 PM.**

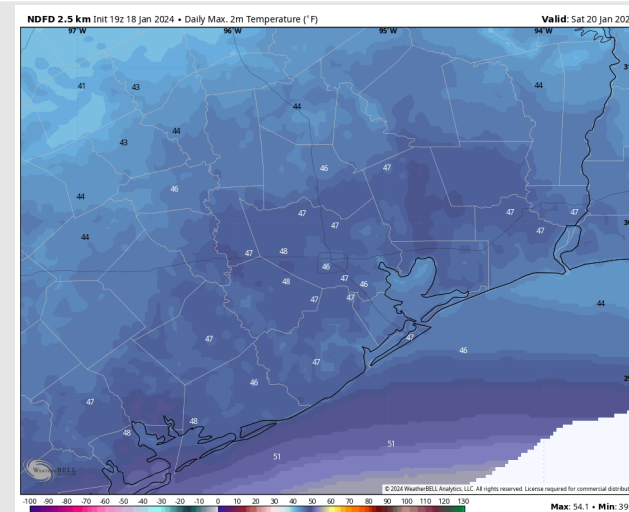
High Temps: Cool Down given Passage of Front **N of Morgan's Point:** Mid 40s **S of Morgan's Point:** Mid 40s F

Visibility: No visibility concerns for Saturday.

Precip Image: 12 PM CT



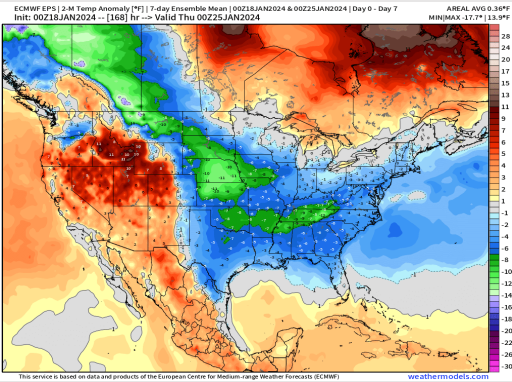
Wind Speed:
11 AM CT



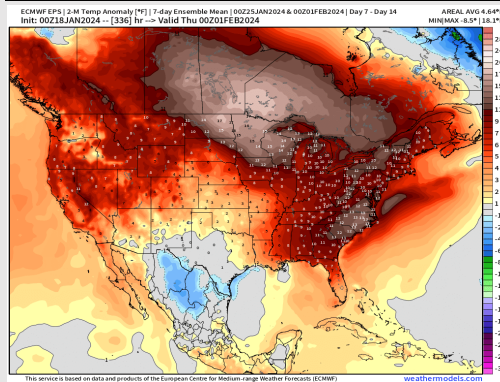
High Temps
Saturday

Houston Pilots: 1/18/24

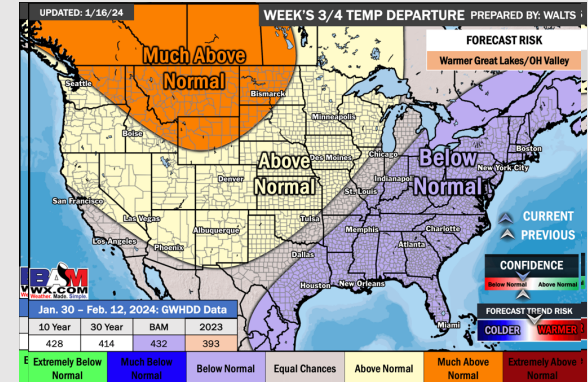
Next 7 Day Temperature Departure



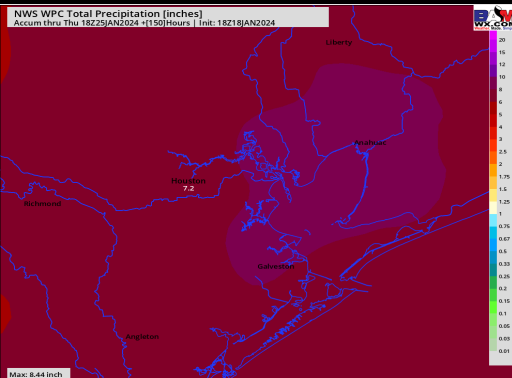
8-14 Day Temperature Departure



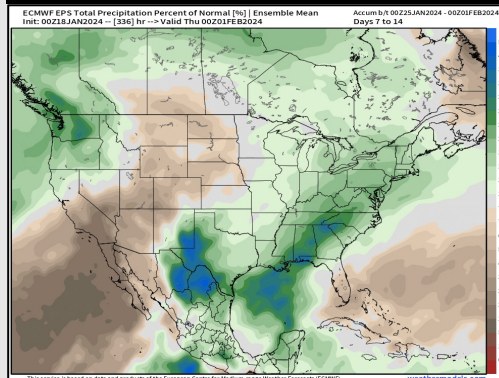
15-30 Day Temperature Departure



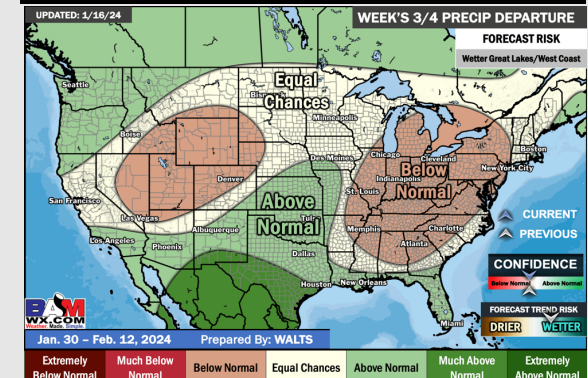
Next 7 Day Total Precipitation



8-14 Day % of Average Precip.



15-30 Day % of Average Precip.



- Looking at MON for the next chance of significant rain. Much below normal temperatures favored for the week ahead.
- Above normal rain chances are expected for the week 2 timeframe. Temps expected to warm up becoming above normal for the week 2 timeframe after a very cold stretch the week prior.
- Below normal temperatures and above normal chances for precipitation are favored in the weeks 3/4 timeframe.