

# Houston Pilots Forecast Package



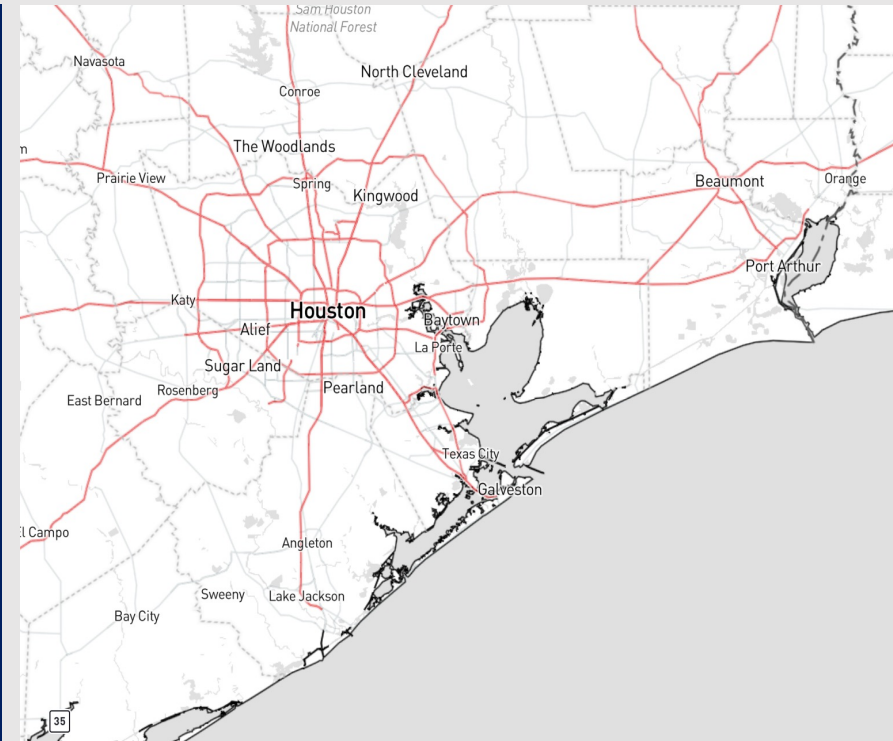
Updated: 2:25 PM CT

Saturday, December 30, 2023

Forecaster: Will Danby

## Weather Headlines

- A quiet weekend is in store with the next rain chance entering on New Year's Day (MON) and with additional chances coming Tuesday night into Wednesday.
- **Monitoring a moderate potential for fog over 51/52 and points north. Check the visibility slide below for more details**
- Winds remain generally calm over the coming days, rarely exceeding 12 kts.



**Radar/NWS Alerts: 2:16 PM CT**



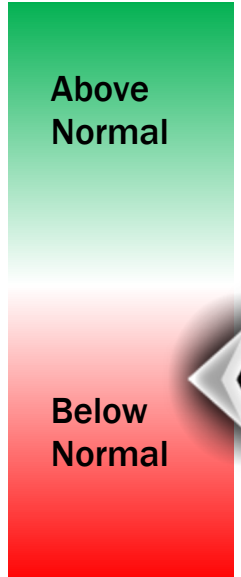
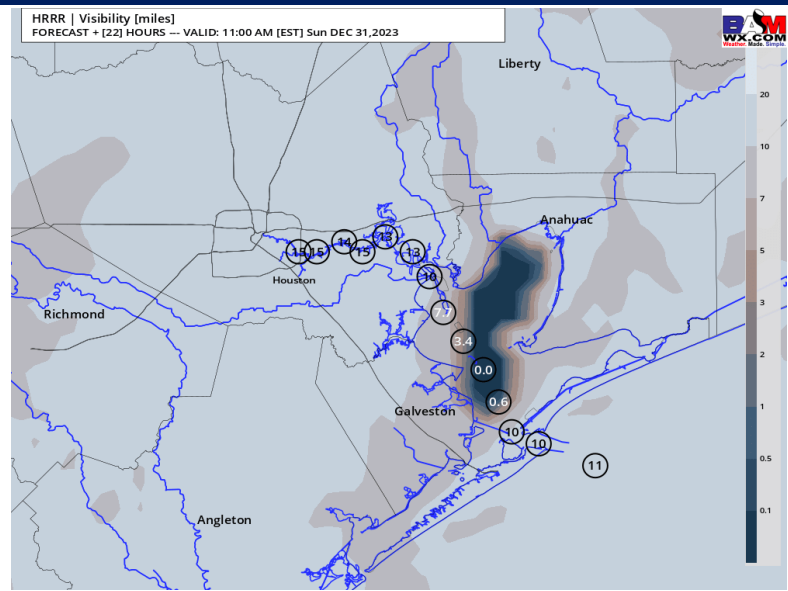
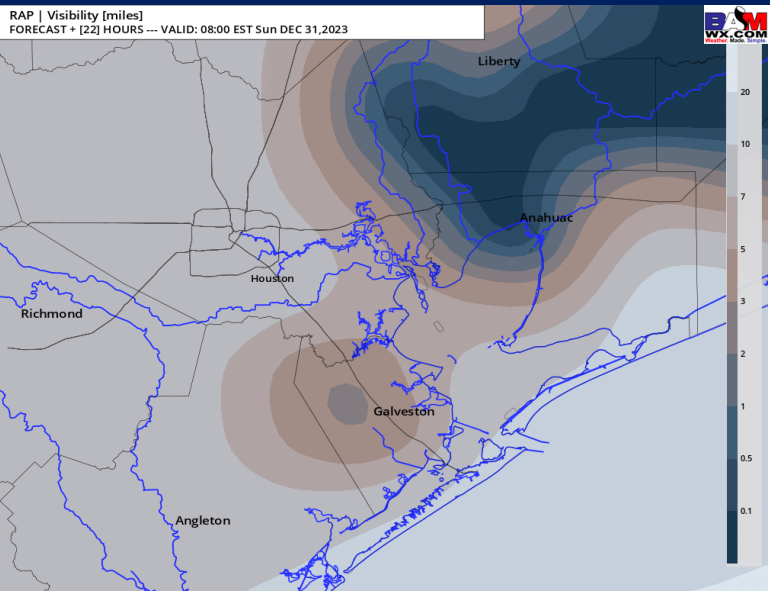
As always, please do not hesitate to reach out to us with any forecast questions via the chat option on the Weather Porthole or our on-call number, **(317)-560-8122** press 1 for forecast questions.

# Houston Pilots Visibility Report



## 7 AM CT WED Visibility      10 AM CT WED VISIBILITY

## Confidence



TIMEFRAME DISCUSSED	THREAT
4 AM - 1 PM CT SUN	Medium

- Due to very light winds along the shore during the overnight, fog development will be possible towards 4-5 AM CT. There is a risk that fog can develop about 1-2 hours sooner towards 3 AM CT.
- Initial development of fog will start to the east of Trinity bay and north of Morgan's Point. Fog North of Morgan's Point will be patchy ( 2-4+ mi visibility) and present through 9 AM, burning off completely by 10 AM.
- Starting towards roughly 8 - 9 AM fog east of Trinity Bay will slowly drift west across stations 51/52 through Morgan's Point. **The key window to watch will be from 8 - 11 AM across these stations.**
- There is lower confidence regarding density of this fog but favoring visibility to be within the 1 - 3-mile range. This would be valid through 11 AM CT.
- Due to the lack of winds sitting over the Bay (Morgan's Point through 51/52) hazy conditions of 2-4 mi visibility can linger through about 1 PM before winds increase and mix the atmosphere.

# Houston Pilots Extended Range Visibility Report



## Tuesday 1/2/24

No visibility concerns for Tuesday.



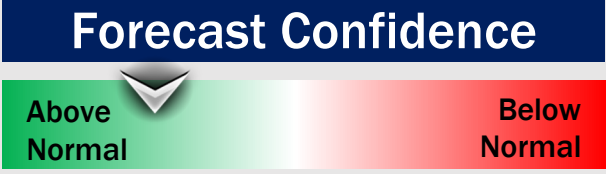
## Thursday 1/4/24

No visibility concerns for Thursday.



## Wednesday 1/3/24

No visibility concerns for Wednesday.  
Downpours can cause visibility to drop below 2 miles at times.



## Chance for Fog

Tuesday AM	Unlikely
Tuesday PM	Unlikely
Wednesday AM	Unlikely
Wednesday PM	Unlikely
Thursday AM	Unlikely
Thursday PM	Unlikely



# Houston Pilots Wind Chart



## Forecast Confidence



## Example

Sustained wind 13 Knots  
Gusts 18 Knots  
Wind from the N

WS: 13  
G:18  
N

Time Knots	Sat 1pm	Sat 2pm	Sat 3pm	Sat 4pm	Sat 5pm	Sat 6pm	Sat 7pm	Sat 8pm	Sat 9pm	Sat 10pm	Sat 11pm	Sun 12am	Sun 1am	Sun 2am	Sun 3am	Sun 4am	Sun 5am	Sun 6am	Sun 7am	Sun 8am	Sun 9am	Sun 10am	Sun 11am	Sun 12pm	Sun 1pm	Sun 2pm	Sun 3pm	Sun 4pm	Sun 5pm	Sun 6pm	Sun 7pm	Sun 8pm	Sun 9pm	Sun 10pm	Sun 11pm	Sun 12am	Mon
<b>610 Bridge</b>	4 WNW	5 WNW	5 WNW	5 WNW	1 WNW	1 SSW	2 SSE	3 SSE	3 SSE	3 S	3 S	3 SSW	3 S	3 S	3 SSW	2 S	2 S	2 SSW	2 SSW	2 S	2 S	3 SSW	3 SSW	4 SSW	6 SSW	7 SW	7 SSW	6 SSW	6 SSW	6 SSE	5 SSE	5 SSE	5 SSE	4 SSE	4 SSE	3 SSE	4 SSE
<b>Kinder 1</b>	4 WNW	5 WNW	5 WNW	5 WNW	1 WNW	1 SSW	2 SSE	3 SSE	3 SSE	3 S	3 S	3 SSW	3 S	3 S	3 SSW	2 S	2 S	2 SSW	2 SSW	2 S	2 S	3 SSW	3 SSW	4 SSW	6 SSW	6 SW	6 SSW	6 SSW	6 SSE	5 SSE	5 SSE	5 SSE	4 SSE	4 SSE	3 SSE	4 SSE	
<b>Greens Bayou</b>	4 WNW	5 WNW	5 WNW	5 WNW	1 W	1 WSW	2 SSE	3 SSE	3 SSE	3 S	3 S	3 S	3 SSW	3 S	3 S	3 SSW	2 S	2 S	2 SSW	2 SSW	2 S	2 S	3 SSW	3 SSW	4 SSW	6 SW	6 SW	6 SSW	6 SSW	6 SSE	5 SSE	5 SSE	5 SSE	4 SSE	4 SSE	3 SSE	4 SSE
<b>Shell Crude</b>	4 W	5 WNW	5 WNW	5 WNW	1 WNW	1 SW	2 SSE	3 SSE	3 SSE	3 S	3 S	3 SSW	3 SSW	3 SSW	3 SSW	2 S	2 S	2 SSW	2 SSW	2 S	2 S	3 SSW	3 SSW	4 SSW	6 SSW	6 SSW	6 SSW	6 SSE	5 SSE	5 SSE	5 SSE	4 SSE	4 SSE	3 SSE	4 SSE		
<b>Lynchburg Ferries</b>	3 W	5 WNW	5 WNW	4 WNW	1 W	1 SW	2 SSE	3 SSE	3 SSE	3 S	3 S	3 SSW	3 SSW	3 SSW	3 SSW	2 S	2 S	2 SSW	2 SSW	2 S	2 S	3 SSW	3 SSW	4 SSW	5 SSW	6 SSW	6 SSW	6 SSE	5 SSE	5 SSE	5 SSE	4 SSE	4 SSE	3 SSE	4 SSE		
<b>Exxon 3</b>	2 WSW	4 W	4 W	4 W	2 W	3 SSE	4 SSE	4 SSE	4 SSE	4 SSE	4 SSE	3 SSE	3 SSE	3 SSE	3 SSE	3 SSE	3 SSE	3 SSE	3 SSE	3 SSE	2 SSE	3 SSE	3 SSE	4 SSE	5 SSE	6 SSE	6 SSE	6 SSE	6 SSE	5 SSE	5 SSE	5 SSE	4 SSE	4 SSE	4 SSE	5 SSE	
<b>Morgans Point</b>	2 SSW	3 S	3 S	3 S	3 SE	3 SSE	3 SSE	3 SSE	3 SSE	4 S	4 S	4 SSW	4 SSW	4 SSW	4 SSW	4 SSW	4 SSW	4 SSW	4 SSW	4 SSW	3 SSW	3 SSW	3 SSW	4 SSW	5 SSW	6 SSW	6 SSW	6 SSE	5 SSE	5 SSE	5 SSE	4 SSE	4 SSE	4 SSE	5 SSE		
<b>75/76</b>	3 ESE	3 ESE	4 ESE	4 ESE	4 SE	4 SSE	5 SSE	5 SSE	5 SSE	5 S	5 S	4 SSW	4 SSW	4 SSW	4 SSW	5 SSW	5 SSW	5 SSW	5 SSW	5 SSW	5 SSW	4 SSW	4 SSW	4 SSW	5 SSW	6 SSW	6 SSW	6 SSW	6 SSE	5 SSE	5 SSE	5 SSE	4 SSE	4 SSE	4 SSE	5 SSE	
<b>63/64</b>	2 E	3 E	3 ESE	3 ESE	5 ESE	5 SSE	5 SSE	5 SSE	5 SSE	6 S	6 S	6 SSW	6 SSW	6 SSW	6 SSW	5 SSW	5 SSW	5 SSW	5 SSW	5 SSW	4 SSW	4 SSW	4 SSW	5 SSW	6 SSW	7 SSW	7 SSW	7 SSE	8 SSE	8 SSE	8 SSE	8 SSE	7 SSE	7 SSE	7 SSE	8 SSE	
<b>51/52</b>	1 SE	2 E	3 ESE	4 E	5 E	5 SE	5 SSE	5 SSE	5 SSE	5 S	5 S	4 SSW	4 SSW	4 SSW	4 SSW	4 SSW	4 SSW	4 SSW	4 SSW	4 SSW	3 SSW	3 SSW	3 SSW	4 SSW	5 SSW	5 SSW	6 SSW	6 SSW	6 SSE	5 SSE	5 SSE	5 SSE	4 SSE	4 SSE	4 SSE	5 SSE	
<b>37/38</b>	1 SSW	2 E	2 E	2 E	5 SE	5 SSE	5 SSE	5 SSE	5 SSE	5 S	5 S	4 SSW	4 SSW	4 SSW	4 SSW	3 SSW	3 SSW	3 SSW	3 SSW	3 SSW	3 SSW	3 SSW	3 SSW	4 SSW	5 SSW	5 SSW	6 SSW	6 SSW	6 SSE	5 SSE	5 SSE	5 SSE	4 SSE	4 SSE	4 SSE	5 SSE	
<b>25/26</b>	7 W	6 S	6 S	6 SE	6 SE	6 SSE	6 SSE	6 SSE	6 SSE	6 S	6 S	6 SSW	6 SSW	6 SSW	6 SSW	6 SSW	6 SSW	6 SSW	6 SSW	6 SSW	6 SSW	6 SSW	6 SSW	6 SSW	6 SSW	6 SSW	6 SSW	6 SSW	6 SSE	5 SSE	5 SSE	5 SSE	4 SSE	4 SSE	4 SSE	5 SSE	
<b>11/12</b>	3 W	2 WSW	3 SSW	3 SSW	4 SSE	4 S	4 S	4 S	4 S	4 S	4 S	4 SSW	4 SSW	4 SSW	4 SSW	4 SSW	4 SSW	4 SSW	4 SSW	4 SSW	4 SSW	4 SSW	4 SSW	4 SSW	4 SSW	4 SSW	4 SSW	4 SSW	4 SSW	4 SSE	3 SSE	3 SSE	3 SSE	2 SSE	2 SSE	2 SSE	3 SSE
<b>1 &amp; 2 Bravo</b>	2 W	3 W	3 SW	3 SSW	3 SSE	5 S	5 S	5 S	5 S	5 S	5 S	5 SSW	5 SSW	5 SSW	5 SSW	5 SSW	5 SSW	5 SSW	5 SSW	5 SSW	5 SSW	5 SSW	5 SSW	5 SSW	5 SSW	5 SSW	5 SSW	5 SSW	5 SSW	5 SSE	4 SSE	4 SSE	4 SSE	3 SSE	3 SSE	3 SSE	4 SSE

NOTE: This is automated data that may/may not agree with the official BAM thinking that's found on the daily slides or special visibility report slides. This data should be used as a guide only

# Houston Pilots: Sat. 12/30/2023



## Forecast Discussion

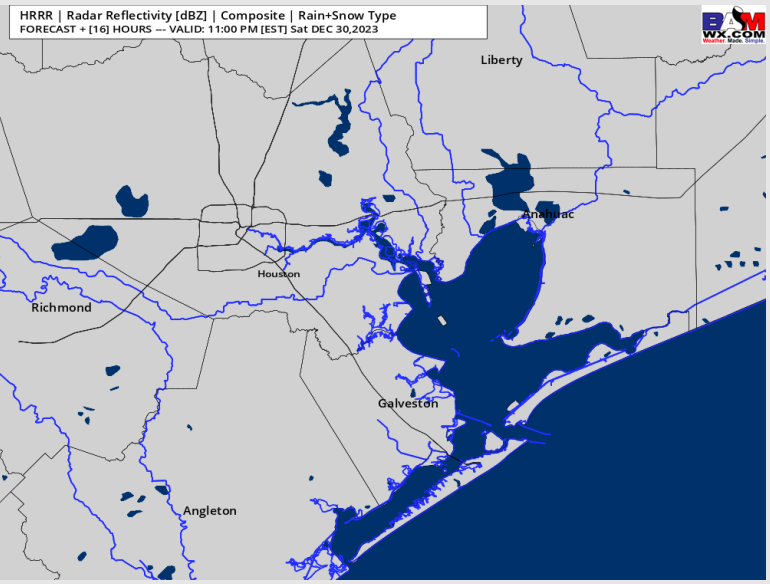
**Precip:** Dry conditions will continue this afternoon and overnight.

**Wind:** Winds will be rather variable this afternoon due to the light nature of winds. Winds will stay from the NW N of Morgan's Point and from the SE S of Morgan's Point. By 8 PM southerly to SSW will take over into the overnight. Towards **N of Morgan's Point:** Winds at 3 - 7 kts sustained. **S of Morgan's Point:** sustained at 4 - 9 kts consistently.

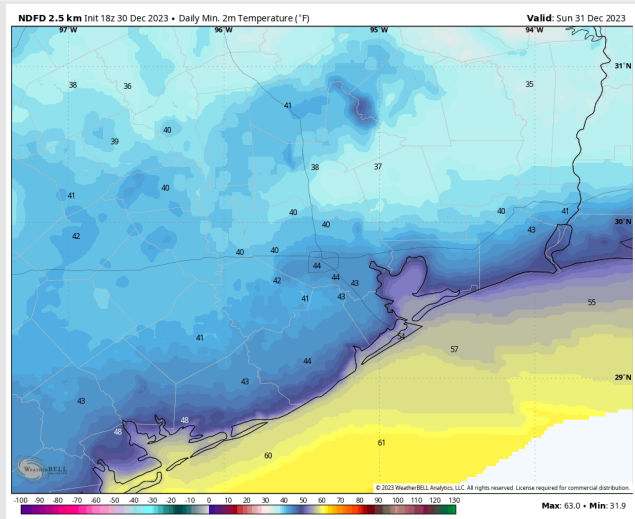
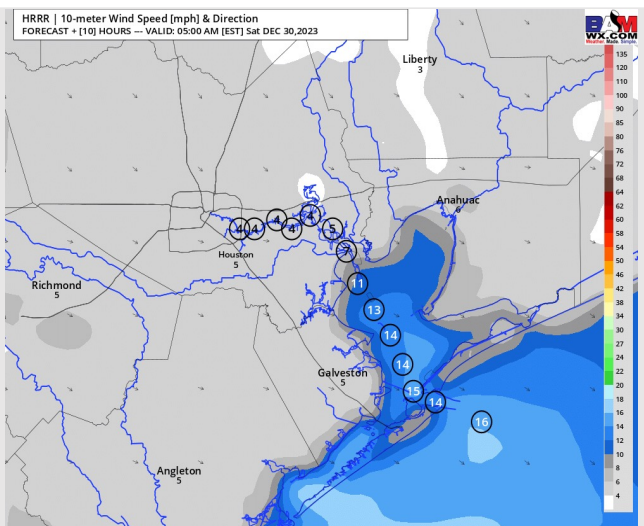
**Low Temps:** **N of Morgan's Point:** Mid 40s F **S of Morgan's Point:** Lower 50s F . Mid to upper 50s F at the Boarding Station.

**Visibility:** Please check the visibility slide above for more details on Fog formation.

## Precip Image: 10 PM CT



Wind Speed: 4 AM CT



Low Temps SUN AM

# Houston Pilots: Sun. 12/31/2023



## Forecast Discussion

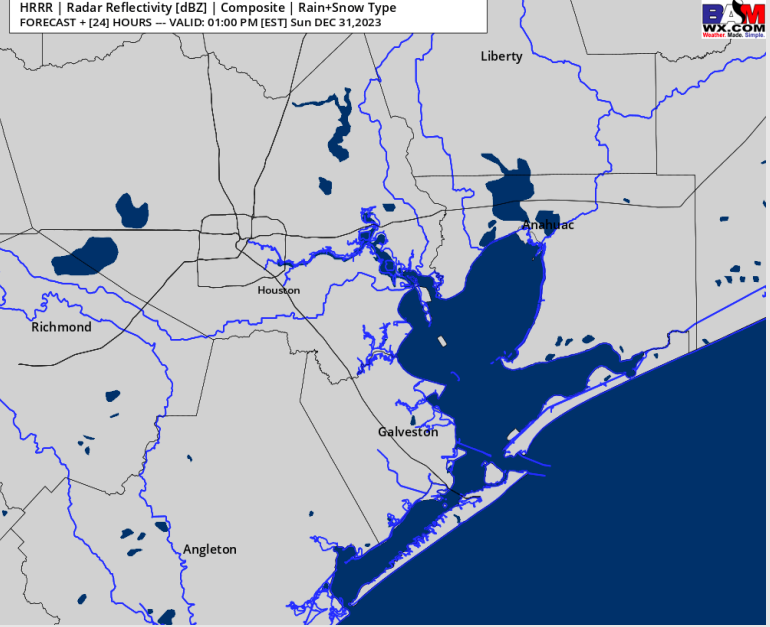
**Precip:** Favoring dry conditions for Sunday.

**Wind:** SSW winds to continue for much of Sunday, veering out of the SSE by 6 PM. **N Morgan's Point:** 3-7 kts outside of a window from 12 - 2 PM at 5 - 10 kts. **S of Morgan's Point:** Sustained winds 4-9 kts with gusts occasionally reaching 12 kts at the Boarding Station. Winds will calm briefly to 1-5 kts between 10 AM - 2 PM. Starting at 3 PM winds pickup to 5 - 10 kts.

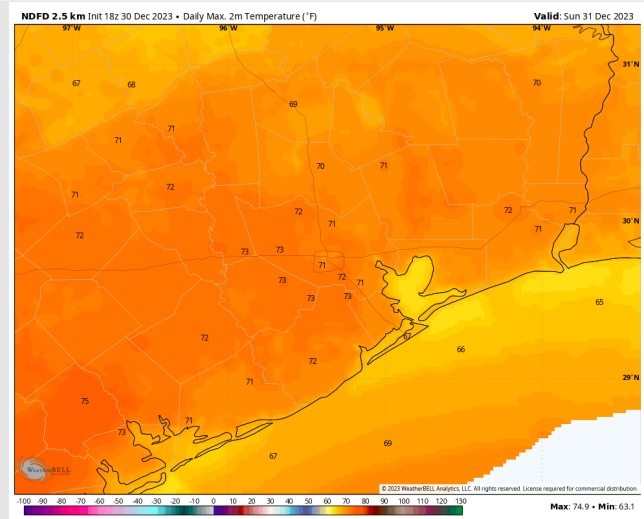
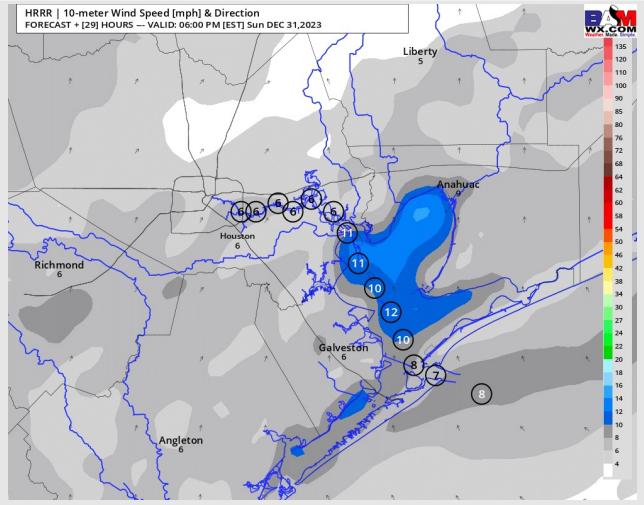
**High Temps:** **N of Morgan's Point:** Low 70s F. **S of Morgan's Point:** Mid-Upper 60s F

**Visibility:** Check the visibility slide for more details.

## Precip Image: 12 PM CT



Wind Speed:  
5 PM CT



High Temps  
Sunday

# Houston Pilots: Mon. 01/01/2024



## Forecast Discussion

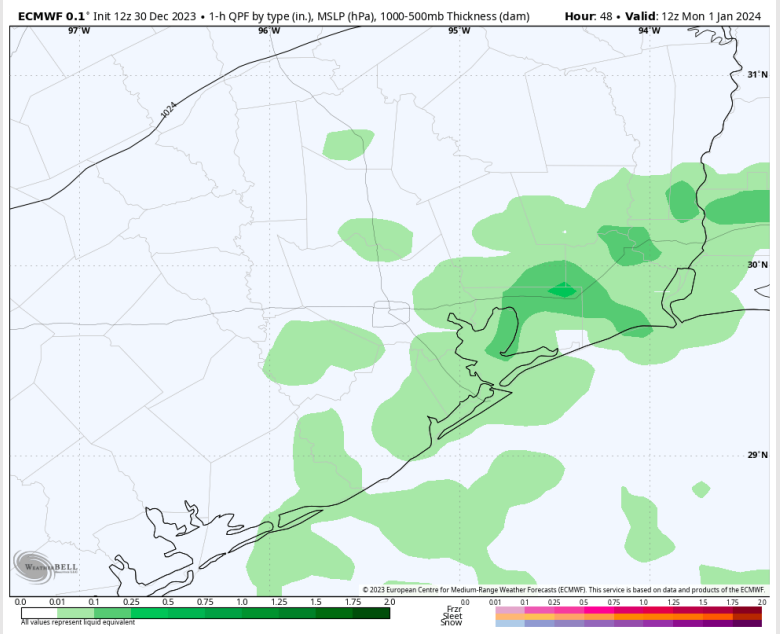
**Precip:** Scattered showers will build in along a front just after midnight towards 2 AM. Best window for rainfall will be from 4 - 10 AM. Dry conditions are favored after 10 AM. Chance of rain is 50 - 60 %

**Wind:** S/SE winds will veer clockwise with the arrival of the front, settling out of the NNE by 10 AM. Winds become NE by 10 PM. **N Morgan's Point:** 2-7 kts through 7 AM, at which time winds will increase to 5-10 kts and will remain at that clip for the rest of the day. **S of Morgan's Point:** 4 - 9 kts through 8 AM, increasing to 7 -12 kts at that time. Winds near the Boarding Station will be 8-14 kts after 3 PM.

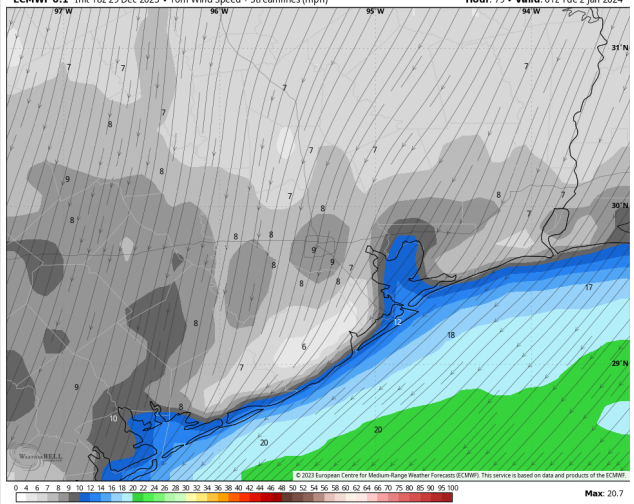
**High Temps:** **N of Morgan's Point:** Mid 60s F. **S of Morgan's Point:** Low to mid 60s F.

**Visibility:** No fog concerns favored for Monday.

## Precip Image: 6 AM CT

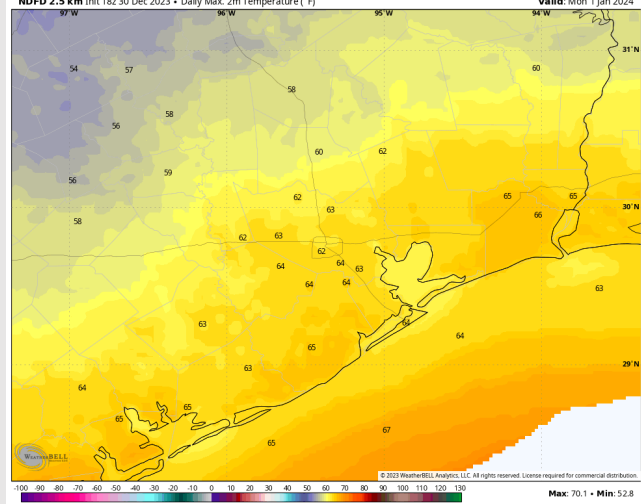


ECMWF 0.1" Init 18z 29 Dec 2023 • 10m Wind Speed + Streamlines (mph) Hour: 79 • Valid: 01z Tue 2 Jan 2024



Wind Speed:  
7 PM CT

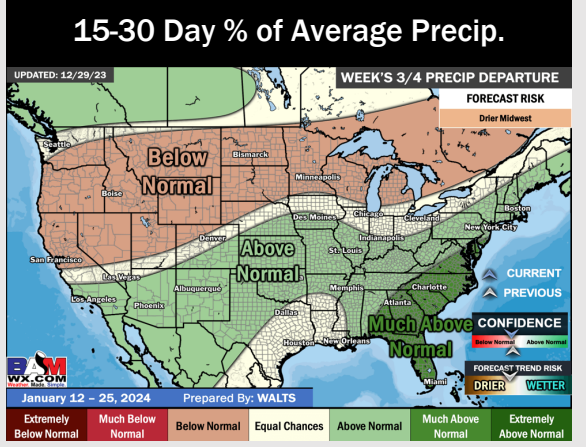
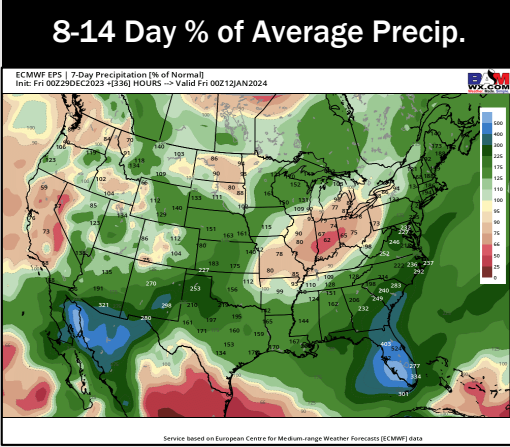
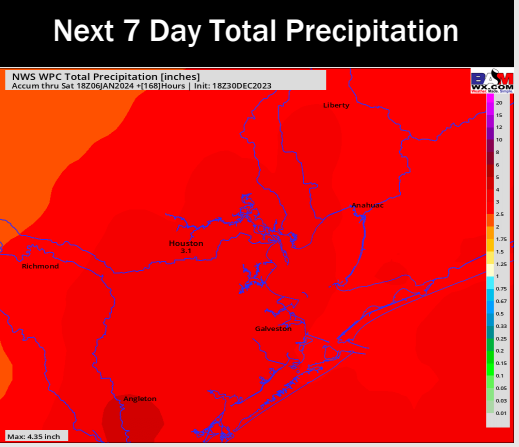
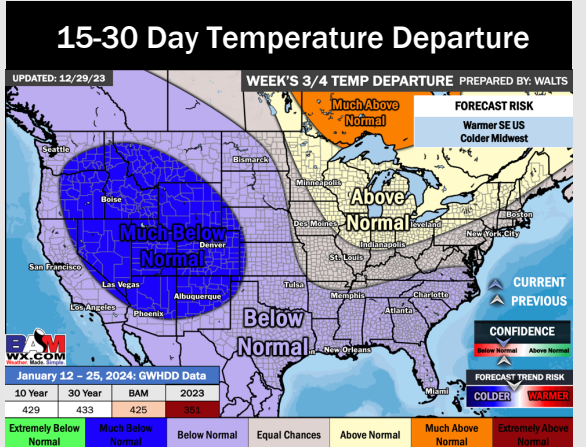
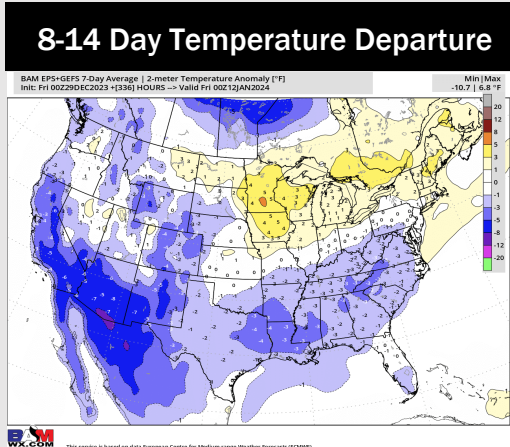
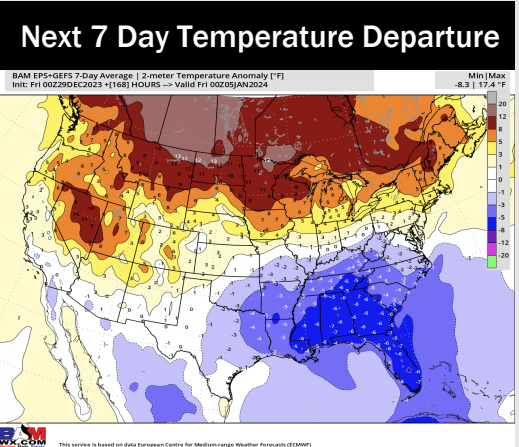
NDFD 2.5 km Init 18z 30 Dec 2023 • Daily Max, 2m Temperature (°F) Valid: Mon 1 Jan 2024



High Temps  
Monday



# Houston Pilots: 12/30/23



- Expecting the next rain chance moving in Monday AM and an all day event of rain on Wednesday. Below normal temperatures are favored over the next week.
- Cooler temperatures and above normal rainfall is favored for the week 2 timeframe
- Below normal temperatures and seasonal chances for precipitation are favored in the weeks ¾ timeframe.