

Houston Pilots Extended Range Visibility Report



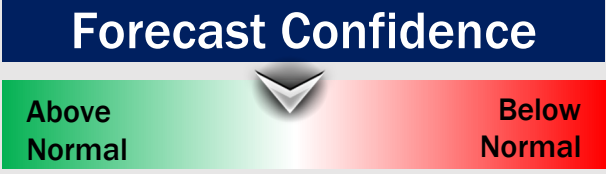
Sunday 12/31/23

No visibility concerns for Sunday.



Monday 1/1/24

Currently no fog concerns for Monday (*Happy New Year!*).



Tuesday 1/2/24

No visibility concerns for Tuesday.



Chance for Fog

Sunday AM	Unlikely
Sunday PM	Unlikely
Monday AM	Unlikely
Monday PM	Unlikely
Tuesday AM	Unlikely
Tuesday PM	Unlikely

Houston Pilots Visibility Chart (miles)



Forecast Confidence



Time	Thu 12pm	Thu 1pm	Thu 2pm	Thu 3pm	Thu 4pm	Thu 5pm	Thu 6pm	Thu 7pm	Thu 8pm	Thu 9pm	Thu 10pm	Thu 11pm	Fri 12am	Fri 1am	Fri 2am	Fri 3am	Fri 4am	Fri 5am	Fri 6am	Fri 7am	Fri 8am	Fri 9am	Fri 10am	Fri 11am	Fri 12pm	Fri 1pm	Fri 2pm	Fri 3pm	Fri 4pm	Fri 5pm	Fri 6pm	Fri 7pm	Fri 8pm	Fri 9pm	Fri 10pm	Fri 11pm	
610 Bridge	10	10	10	10	10	10	10	10	10	10	10	10	10	10	10	10	10	10	10	10	10	10	10	10	10	10	10	10	10	10	10	10	10	10	10	10	
Kinder 1	10	10	10	10	10	10	10	10	10	10	10	10	10	10	10	10	10	10	10	10	10	10	10	10	10	10	10	10	10	10	10	10	10	10	10	10	10
Greens Bayou	10	10	10	10	10	10	10	10	10	10	10	10	10	10	10	10	10	10	10	10	10	10	10	10	10	10	10	10	10	10	10	10	10	10	10	10	10
Shell Crude	10	10	10	10	10	10	10	10	10	10	10	10	10	10	10	10	10	10	10	10	10	10	10	10	10	10	10	10	10	10	10	10	10	10	10	10	10
Lynchburg Ferries	10	10	10	10	10	10	10	10	10	10	10	10	10	10	10	10	10	10	10	10	10	10	10	10	10	10	10	10	10	10	10	10	10	10	10	10	10
Exxon 3	10	10	10	10	10	10	10	10	10	10	10	10	10	10	10	10	10	10	10	10	10	10	10	10	10	10	10	10	10	10	10	10	10	10	10	10	10
Morgans Point	10	10	10	10	10	10	10	10	10	10	10	10	10	10	10	10	10	10	10	10	10	10	10	10	10	10	10	10	10	10	10	10	10	10	10	10	10
75/76	10	10	10	10	10	10	10	10	10	10	10	10	10	10	10	10	10	10	10	10	10	10	10	10	10	10	10	10	10	10	10	10	10	10	10	10	10
63/64	10	10	10	10	10	10	10	10	10	10	10	10	10	10	10	10	10	10	10	10	10	10	10	10	10	10	10	10	10	10	10	10	10	10	10	10	10
51/52	10	10	10	10	10	10	10	10	10	10	10	10	10	10	10	10	10	10	10	10	10	10	10	10	10	10	10	10	10	10	10	10	10	10	10	10	10
37/38	10	10	10	10	10	10	10	10	10	10	10	10	10	10	10	10	10	10	10	10	10	10	10	10	10	10	10	10	10	10	10	10	10	10	10	10	10
25/26	10	10	10	10	10	10	10	10	10	10	10	10	10	10	10	10	10	10	10	10	10	10	10	10	10	10	10	10	10	10	10	10	10	10	10	10	10
11/12	10	10	10	10	10	10	10	10	10	10	10	10	10	10	10	10	10	10	10	10	10	10	10	10	10	10	10	10	10	10	10	10	10	10	10	10	10
1 & 2 Bravo	10	10	10	10	10	10	10	10	10	10	10	10	10	10	10	10	10	10	10	10	10	10	10	10	10	10	10	10	10	10	10	10	10	10	10	10	10

NOTE: This is automated data that may/may not agree with the official BAM thinking that's found on the daily slides or special visibility report slides. This data should be used as a guide only

Houston Pilots Wind Chart



Forecast Confidence



Example

Sustained wind 13 Knots
Gusts 18 Knots
Wind from the N

WS: 13
G:18
N

Time Knots	Thu 12pm	Thu 1pm	Thu 2pm	Thu 3pm	Thu 4pm	Thu 5pm	Thu 6pm	Thu 7pm	Thu 8pm	Thu 9pm	Thu 10pm	Thu 11pm	Fri 12am	Fri 1am	Fri 2am	Fri 3am	Fri 4am	Fri 5am	Fri 6am	Fri 7am	Fri 8am	Fri 9am	Fri 10am	Fri 11am	Fri 12pm	Fri 1pm	Fri 2pm	Fri 3pm	Fri 4pm	Fri 5pm	Fri 6pm	Fri 7pm	Fri 8pm	Fri 9pm	Fri 10pm	Fri 11pm	
610 Bridge	8	9	10	9	8	6	3	3	3	4	3	4	2	3	3	4	4	4	4	4	4	4	6	6	6	7	7	7	8	8	7	6	5	4	4	4	
	16	18	17	16	14	12	7	8	8	9	8	10	9	10	10	6	6	6	6	6	6	6	9	9	10	11	11	11	12	12	11	9	8	7	6	7	6
	NNW	NNW	NW	NNW	NNW	NW	NNW	NNW	N	NNE	NNE	NNE	ENE	ENE	WSW	NNW	NNW	NNW	NNW	NNW	NW	NW	NW	NW	NW	NW	WNW	WNW	WNW	WNW	W	W	WSW	WSW	WSW	WSW	
Kinder 1	8	9	10	9	8	6	3	3	3	3	3	4	2	3	3	4	4	4	4	4	4	6	6	7	7	7	7	8	8	7	6	5	4	4	4	4	
	17	18	16	15	14	12	7	7	7	9	9	10	9	10	9	6	6	6	6	6	6	6	9	9	9	11	11	11	12	12	11	9	8	7	6	7	6
	NNW	NNW	NW	NNW	NNW	NW	NNW	NNW	NNE	NNE	NNE	ENE	ESE	NNW	WNW	NNW	NNW	NNW	NNW	NNW	NW	NW	NW	NW	NW	WNW	WNW	WNW	WNW	W	W	WSW	WSW	WSW	WSW		
Greens Bayou	9	9	10	10	9	6	3	3	3	3	3	3	2	3	3	4	4	4	4	4	4	6	6	7	7	7	7	8	8	7	6	5	4	4	4	4	
	19	18	16	15	14	12	7	7	6	8	9	10	9	10	9	6	6	6	6	6	6	7	9	9	9	10	11	11	12	12	11	9	8	7	6	6	
	NNW	NNW	NW	NNW	NNW	NW	NNW	W	NNE	NNE	NNE	N	S	N	N	NNW	NNW	NNW	NNW	NNW	NW	NW	NW	NW	NW	WNW	WNW	WNW	WNW	W	W	WSW	WSW	WSW	WSW		
Shell Crude	9	9	10	10	9	6	3	3	3	3	3	3	2	3	3	4	4	4	4	4	4	5	6	6	7	7	7	8	8	7	6	5	4	4	4	4	
	19	18	16	15	14	12	7	6	6	8	10	10	9	10	9	6	6	6	6	6	6	6	7	9	9	10	10	11	11	12	12	11	9	8	7	6	6
	NNW	NNW	NW	NNW	NNW	NW	NNW	SSW	NNE	NNE	NE	N	SSE	NNW	N	NNW	NNW	NNW	NNW	NNW	NW	NW	NW	NW	NW	NW	WNW	WNW	WNW	WNW	W	W	WSW	WSW	WSW	WSW	
Lynchburg Ferries	8	9	11	10	9	6	3	3	3	3	4	3	3	3	3	5	5	5	5	5	5	6	7	7	7	7	8	8	7	6	5	4	4	4	4		
	18	18	16	15	14	12	7	6	7	9	10	10	10	9	7	6	6	6	6	6	6	7	9	9	10	10	10	11	11	12	12	11	9	8	7	6	6
	NNW	NNW	NW	NNW	NNW	NNW	WNW	ENE	NNE	N	ENE	N	SSE	WSW	WNW	NNW	NNW	NNW	NNW	NNW	NW	NW	NW	NW	NW	NW	WNW	WNW	WNW	W	W	WSW	WSW	WSW	WSW		
Exxon 3	8	9	11	10	8	6	3	3	3	4	4	4	3	3	4	5	5	5	5	5	5	6	7	7	7	8	8	8	8	8	7	6	5	5	5	5	
	16	18	16	15	14	12	8	7	9	11	11	10	10	10	10	7	7	7	7	7	7	8	9	9	10	10	11	11	12	12	11	10	8	7	7	7	7
	NNW	NNW	NW	NNW	NNW	NNW	WSW	NNE	NNE	N	NE	N	W	SW	WNW	NNW	NNW	NNW	NNW	NNW	NW	NW	NW	NW	NW	NW	WNW	WNW	WNW	W	W	WSW	WSW	WSW	WSW		
Morgans Point	8	10	11	11	9	7	4	4	5	6	6	5	5	5	5	7	7	7	7	7	7	7	7	8	8	8	8	9	9	9	8	7	7	6	6	6	
	15	17	16	16	14	12	10	9	10	13	13	12	12	12	11	9	9	9	9	9	8	9	10	10	11	11	12	12	13	13	12	10	9	8	8	7	
	NNW	NNW	NNW	NNW	NNW	NNW	WSW	NNE	NNE	N	NNE	N	SSW	SSE	SW	NNW	NNW	NNW	NNW	NNW	NW	NW	NW	NW	NW	NW	WNW	WNW	WNW	W	W	WSW	WSW	WSW	WSW		
75/76	9	11	12	13	11	9	7	7	8	10	11	10	10	9	8	10	10	10	10	10	10	9	9	9	9	8	8	9	10	11	10	9	8	8	8	8	
	16	15	18	17	15	13	11	9	11	14	15	14	15	13	11	12	11	11	11	11	11	11	11	11	11	12	13	13	13	14	13	12	11	10	9	9	9
	NNW	NNW	NNW	NNW	NNW	NNW	NW	NNE	NNE	N	N	N	NNE	NE	NE	NNW	NNW	NNW	NNW	NNW	NW	NW	NW	NW	NW	NW	WNW	WNW	WNW	W	W	WSW	WSW	WSW	WSW		
63/64	10	11	13	14	13	11	9	9	10	11	13	12	12	12	10	13	12	12	12	12	11	11	10	9	9	8	9	9	10	11	11	10	9	8	8	9	
	16	15	19	17	16	13	12	10	11	14	15	14	16	14	11	14	13	13	13	13	12	12	11	12	12	12	12	13	13	14	13	12	10	9	9	10	
	NNW	NNW	NNW	NNW	NNW	NNW	NNW	NE	N	N	N	N	N	N	N	N	NNW	NNW	NNW	NNW	NNW	NW	NW	NW	NW	NW	WNW	WNW	WNW	W	W	WSW	WSW	WSW	WSW		
51/52	10	10	13	14	13	12	10	9	10	11	14	13	13	13	10	13	13	12	12	11	11	10	10	9	9	9	9	9	10	11	11	10	9	8	8	8	8
	17	15	18	18	16	14	13	11	12	13	15	14	16	15	11	14	14	13	13	12	12	11	12	12	12	12	12	13	13	13	12	11	10	9	9	9	
	NNW	NNW	NNW	NNW	NNW	NNW	NNW	SSW	NNE	N	N	N	N	N	N	NNW	NNW	NNW	NNW	NNW	NNW	NW	NW	NW	NW	NW	WNW	WNW	WNW	W	W	WSW	WSW	WSW	WSW		
37/38	11	10	12	14	13	12	11	9	10	11	13	13	13	13	10	13	13	12	12	11	11	11	10	10	9	9	9	9	10	11	11	10	8	7	8	8	
	18	15	17	18	16	14	13	12	13	14	14	15	15	12	15	14	14	13	12	12	12	12	12	12	12	12	12	12	12	12	12	11	9	8	9	9	
	NNW	NNW	NNW	NNW	NNW	NNW	NNW	NW	N	N	N	N	N	NNE	N	N	NNW	NNW	NNW	NNW	NNW	NW	NW	NW	NW	NW	WNW	WNW	WNW	W	W	WSW	WSW	WSW	WSW		
25/26	11	10	12	13	13	11	10	9	9	10	11	12	12	13	10	12	12	11	11	10	10	10	10	10	9	9	9	9	10	10	10	9	8	7	7	8	
	18	16	16	18	16	14	13	12	11	12	14	14	15	15	13	14	13	13	13	12	12	12	12	12	12	12	11	12	11	12	12	11	10	9	9	9	
	NNW	NNW	NNW	NNW	NNW	NNW	NNW	NW	N	N	N	N	N	N	NNE	N	N	NNW	NNW	NNW	NNW	NW	NW	NW	NW	NW	WNW	WNW	WNW	W	W	WSW	WSW	WSW	WSW		
11/12	11	11	11	12	12	10	10	9	9	9	10	11	11	11	9	12	12	12	12	11	11	11	10	10	9	9	9	9	10	10	10	9	8	8	8	8	
	19	17	17	18	16	14	13	12	12	12	14	14	15	15	14	14	14	13	13	13	12	12	12	12	12	12	11	11	11	12	12	12	11	10	10	10	
	NNW	NNW	NNW	NNW	NNW	NNW	NNW	W	N	N	N	NNE	N	N	NNE	N	N	N	N	NNW	NNW	NNW	NNW	NNW	NW	NW	NW	WNW	WNW	WNW	W	W	WSW	WSW	WSW	WSW	
1 & 2 Bravo	13	13	13	13	14	12	13	12	12	11	14	14	14	15	14	11	16	16	15	14	14	13	13	12	11	10	9	9	9	11	12	14	14	12	11	11	
	19	20	19	18	17	15	15	14	13	14	15	15	16	17	15	17	17	17	16	15	14	14	13	12	11	10	9	9	11	12	14	15	13	13	12	12	
	NNW	NNW	NNW	NNW	NNW	NNW	NNW	N	W	SW	SSE	N	N	N	N	N	N	N	N	NNW	NNW	NNW	NNW	NW	NW	NW	NW	WNW	WNW	W	W	WSW	WSW	WSW	WSW		

NOTE: This is automated data that may/may not agree with the official BAM thinking that's found on the daily slides or special visibility report slides. This data should be used as a guide only

Forecast Discussion

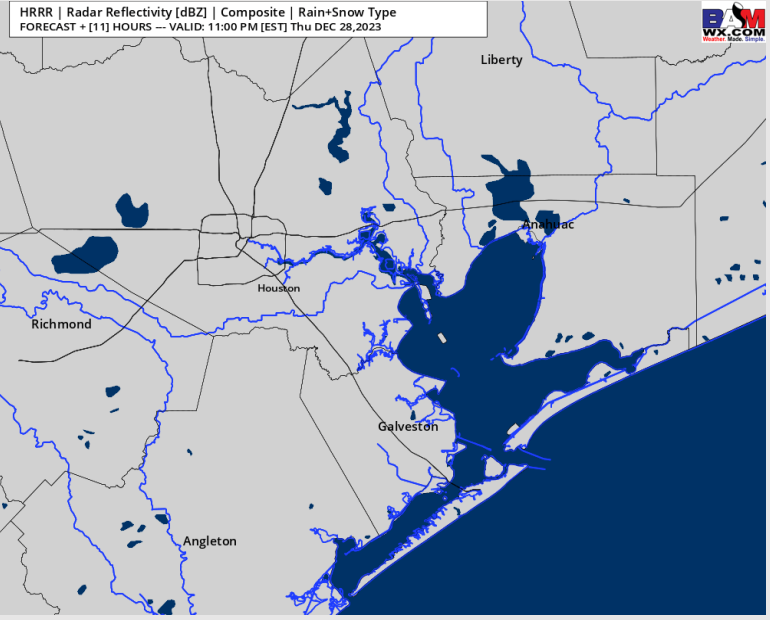
Precip: Favoring dry conditions for the rest of the day.

Wind: N/NW winds to continue today. **N Morgan's Point:** 7-12 knots through 6 PM before tapering to 3-8 knots. **S of Morgan's Point:** Sustained winds 13 – 18 kts. **Periodic wind gusts of 15-20 kts will be possible for all stations S of Morgan's point for the entire day, with highest gusts of 20-24 kts possible at the boarding station through 7 PM. Gusts then sit closer to 15-20 knots.**

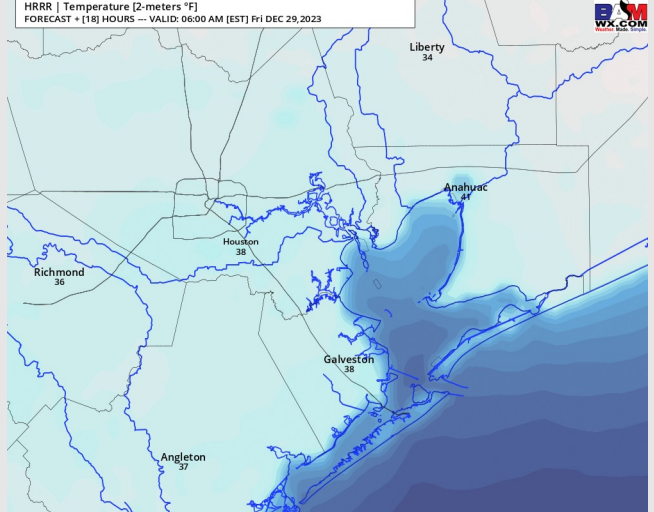
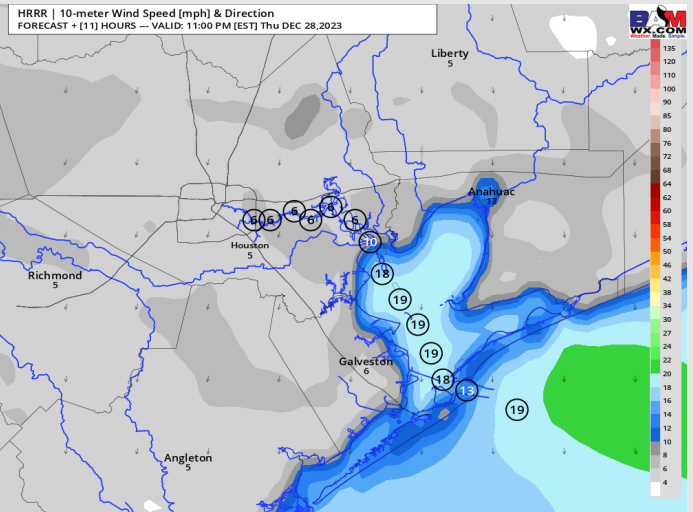
Low Temps: **N of Morgan's Point:** Upper 30s F. **S of Morgan's Point:** Mid 40s F

Visibility: Not anticipating any visibility concerns.

Precip Image: 10 PM CT



**Wind Speed:
10 PM CT**



**Low Temps
Tonight**

Houston Pilots: Fri. 12/29/2023



Forecast Discussion

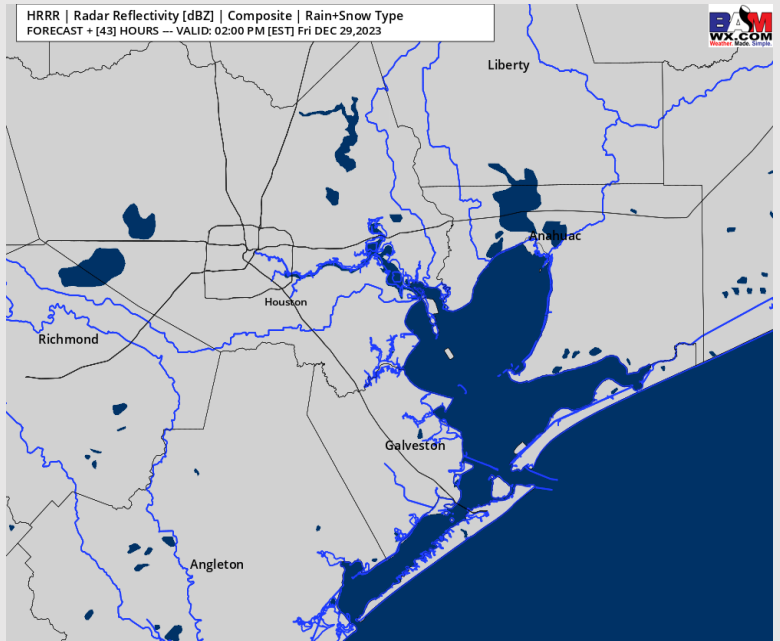
Precip: Favoring dry conditions for Friday.

Wind: NW winds to continue into Friday. **N Morgan's Point:** 3 – 6 kts favored through 12PM, before increasing to 8 – 11 kts for the remainder of the day. **S of Morgan's Point:** Winds will be at 11- 16 kts through 11AM, before weakening to 9 – 14 kts for the remainder of the day.

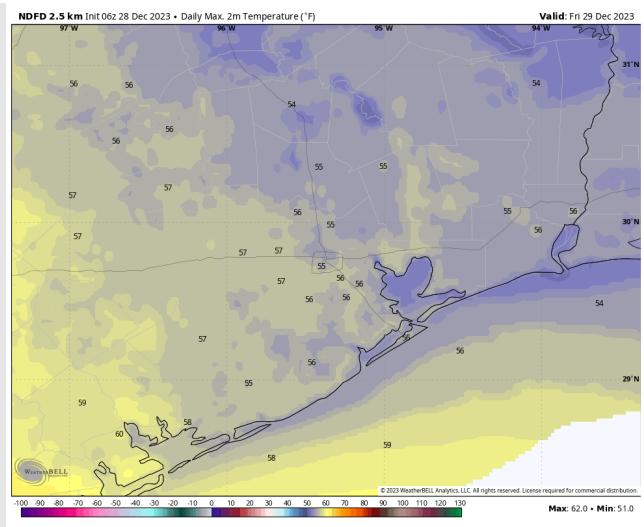
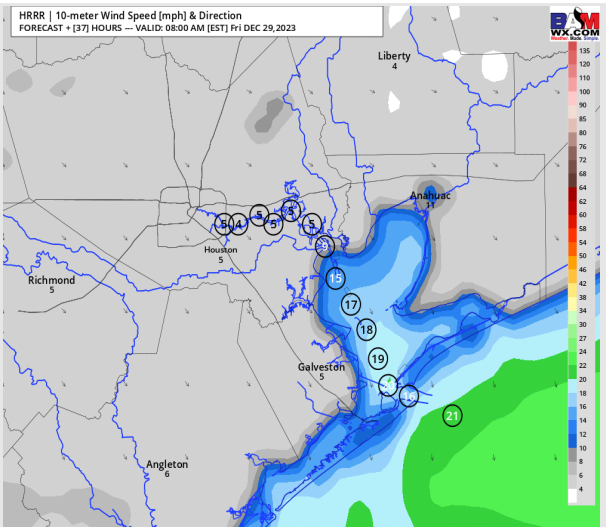
High temps: **N of Morgan's Point:** Mid 50s F **S of Morgan's Point:** Low to Mid 50s F.

Visibility: No fog concerns favored for Friday.

Precip Image: 1 PM CT



Wind Speed:
7 AM CT



High Temps
Friday

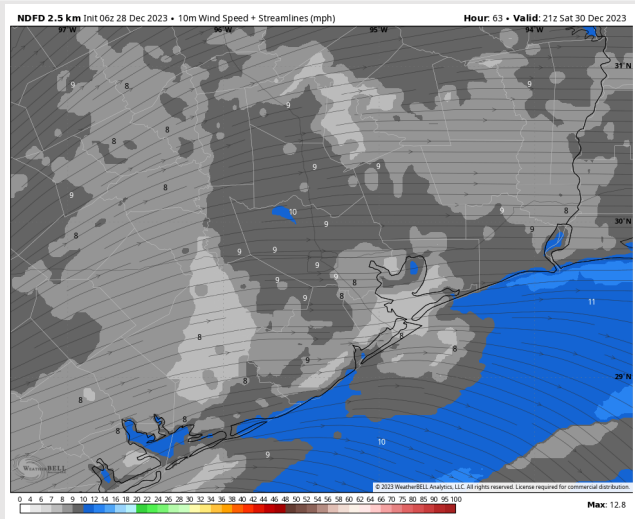
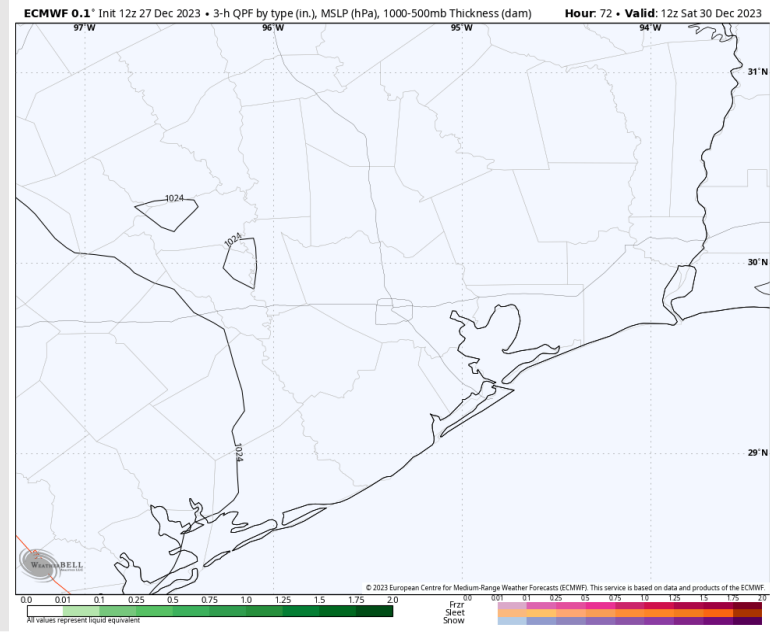
Houston Pilots: Sat. 12/30/2023



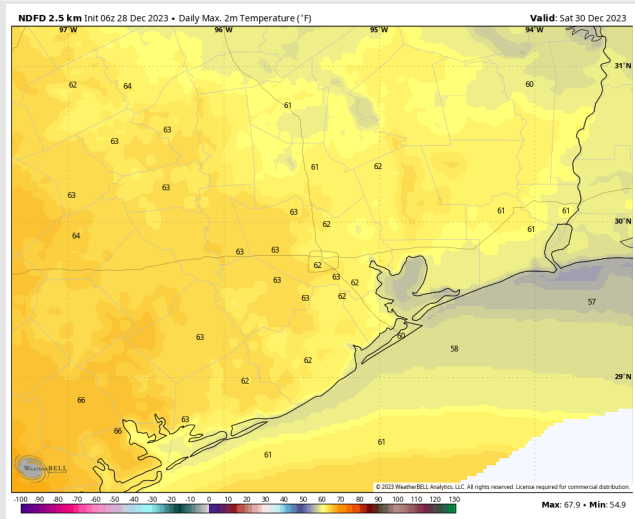
Forecast Discussion

- Precip:** Favoring dry conditions for Saturday.
- Wind:** Winds will gradually veer from the NW to the WSW after 3PM. **N of Morgan's Point:** Winds at 3 - 7 kts are favored for the entire day. **S of Morgan's Point:** Winds of 8 - 13 kts will be favored through 11AM, before weakening to 7 - 11 kts for the remainder of the day.
- High Temps:** Warmer **N of Morgan's Point:** Upper 50s F / Lower 60s F **S of Morgan's Point:** Upper 50s F
- Visibility:** No fog concerns favored for Saturday.

Precip Image: 6 AM CT

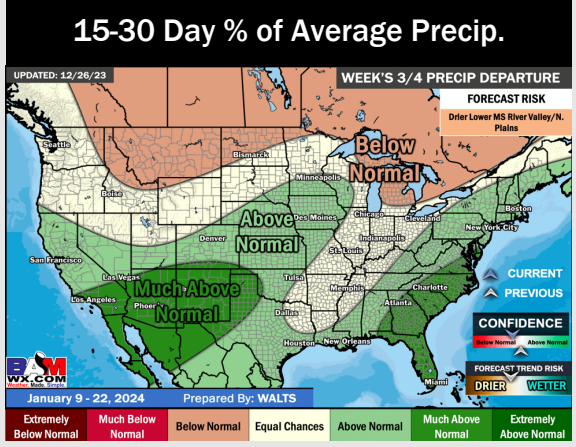
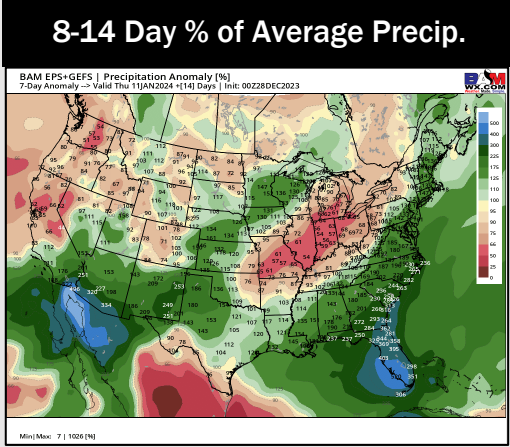
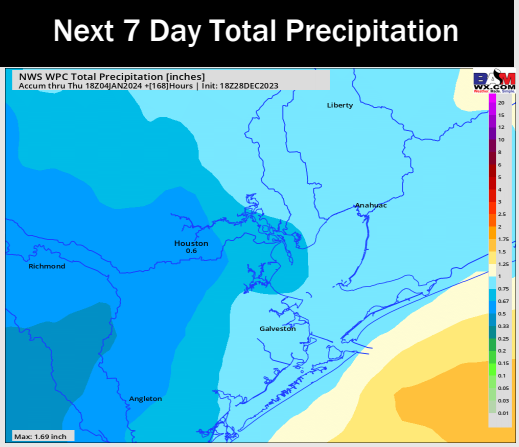
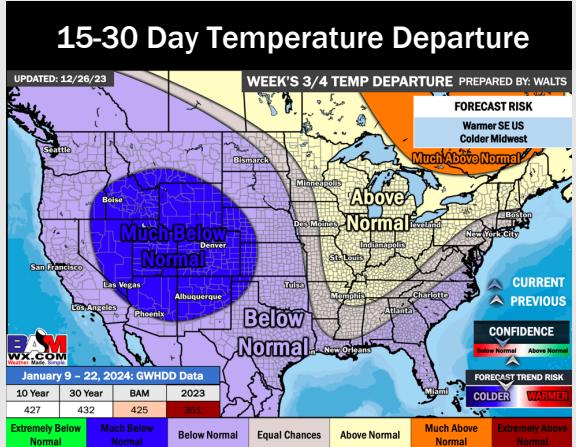
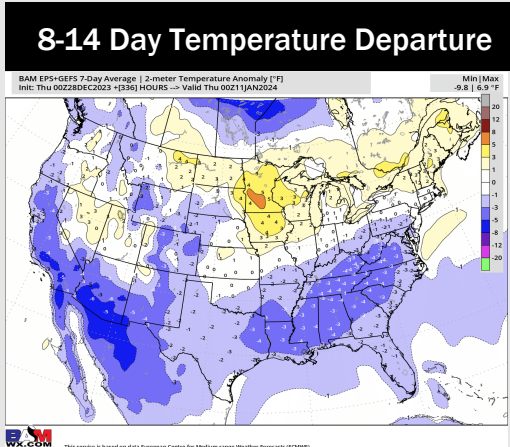
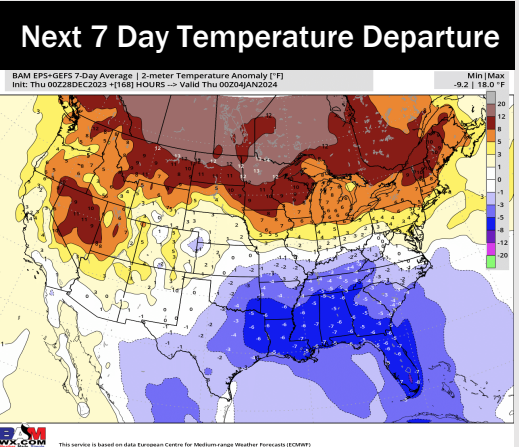


Wind Speed:
3 PM CT



High Temps
Saturday

Houston Pilots: 12/28/23



- A quiet second half of the week lies ahead with the next rain chance moving in Monday. Below normal temperatures are favored over the next week.
- Cooler temperatures and above normal rainfall is favored for the week 2 timeframe
- Below normal temperatures and above normal chances for precipitation are favored in the weeks 3/4 timeframe.