

Houston Pilots Forecast Package



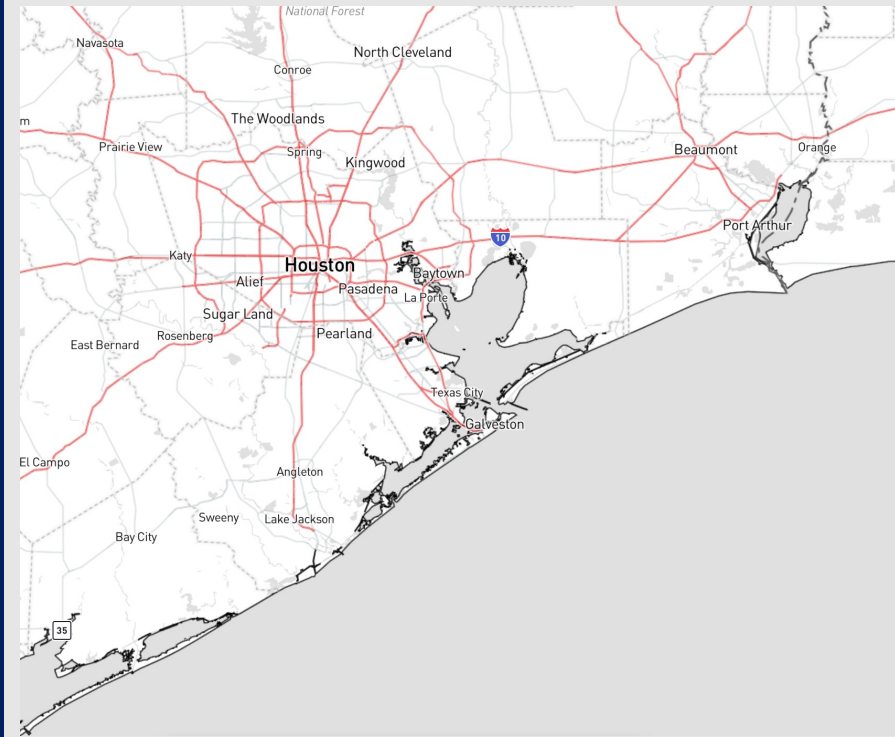
Updated: 1:30 AM CT

Thursday, December 28, 2023

Forecaster: John Kemper

Weather Headlines

- A quiet second half of the week is in store with the next rain chance entering NYE through early morning hours of January 1st.
- Not anticipating fog concerns through the end of the year at this time.
- NW winds will be on the gustier side over the next 40 hrs, at times reaching 25+ kts, especially south of Morgan's Point.



Radar/NWS Alerts: 1:15 AM CT



As always, please do not hesitate to reach out to us with any forecast questions via the chat option on the Weather Porthole or our on-call number, **(317)-560-8122** press 1 for forecast questions.

Houston Pilots Extended Range Visibility Report



Sunday 12/31/23

No visibility concerns for Sunday.



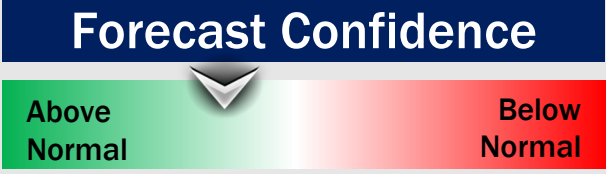
Tuesday 1/2/24

No visibility concerns for Tuesday.



Monday 1/1/24

No visibility concerns for Monday (*Happy New Year*).



Chance for Fog

Sunday AM	Unlikely
Sunday PM	Unlikely
Monday AM	Unlikely
Monday PM	Unlikely
Tuesday AM	Unlikely
Tuesday PM	Unlikely

Houston Pilots Visibility Chart (miles)



Time	Thu 12am	Thu 1am	Thu 2am	Thu 3am	Thu 4am	Thu 5am	Thu 6am	Thu 7am	Thu 8am	Thu 9am	Thu 10am	Thu 11am	Thu 12pm	Thu 1pm	Thu 2pm	Thu 3pm	Thu 4pm	Thu 5pm	Thu 6pm	Thu 7pm	Thu 8pm	Thu 9pm	Thu 10pm	Thu 11pm	Fri 12am	Fri 1am	Fri 2am	Fri 3am	Fri 4am	Fri 5am	Fri 6am	Fri 7am	Fri 8am	Fri 9am	Fri 10am	Fri 11am	
610 Bridge	10	10	10	10	10	10	10	10	10	10	10	10	10	10	10	10	10	10	10	10	10	10	10	10	10	10	10	10	10	10	10	10	10	10	10	10	10
Kinder 1	10	10	10	10	10	10	10	10	10	10	10	10	10	10	10	10	10	10	10	10	10	10	10	10	10	10	10	10	10	10	10	10	10	10	10	10	10
Greens Bayou	10	10	10	10	10	10	10	10	10	10	10	10	10	10	10	10	10	10	10	10	10	10	10	10	10	10	10	10	10	10	10	10	10	10	10	10	10
Shell Crude	10	10	10	10	10	10	10	10	10	10	10	10	10	10	10	10	10	10	10	10	10	10	10	10	10	10	10	10	10	10	10	10	10	10	10	10	10
Lynchburg Ferries	10	10	10	10	10	10	10	10	10	10	10	10	10	10	10	10	10	10	10	10	10	10	10	10	10	10	10	10	10	10	10	10	10	10	10	10	10
Exxon 3	10	10	10	10	10	10	10	10	10	10	10	10	10	10	10	10	10	10	10	10	10	10	10	10	10	10	10	10	10	10	10	10	10	10	10	10	10
Morgans Point	10	10	10	10	10	10	10	10	10	10	10	10	10	10	10	10	10	10	10	10	10	10	10	10	10	10	10	10	10	10	10	10	10	10	10	10	10
75/76	10	10	10	10	10	10	10	10	10	10	10	10	10	10	10	10	10	10	10	10	10	10	10	10	10	10	10	10	10	10	10	10	10	10	10	10	10
63/64	10	10	10	10	10	10	10	10	10	10	10	10	10	10	10	10	10	10	10	10	10	10	10	10	10	10	10	10	10	10	10	10	10	10	10	10	10
51/52	10	10	10	10	10	10	10	10	10	10	10	10	10	10	10	10	10	10	10	10	10	10	10	10	10	10	10	10	10	10	10	10	10	10	10	10	10
37/38	10	10	10	10	10	10	10	10	10	10	10	10	10	10	10	10	10	10	10	10	10	10	10	10	10	10	10	10	10	10	10	10	10	10	10	10	10
25/26	10	10	10	10	10	10	10	10	10	10	10	10	10	10	10	10	10	10	10	10	10	10	10	10	10	10	10	10	10	10	10	10	10	10	10	10	10
11/12	10	10	10	10	10	10	10	10	10	10	10	10	10	10	10	10	10	10	10	10	10	10	10	10	10	10	10	10	10	10	10	10	10	10	10	10	10
1 & 2 Bravo	10	10	10	10	10	10	10	10	10	10	10	10	10	10	10	10	10	10	10	10	10	10	10	10	10	10	10	10	10	10	10	10	10	10	10	10	10

NOTE: This is automated data that may/may not agree with the official BAM thinking that's found on the daily slides or special visibility report slides. This data should be used as a guide only

Houston Pilots Wind Chart



Forecast Confidence



Example

Sustained wind 13 Knots
Gusts 18 Knots
Wind from the N

WS: 13
G:18
N

Time Knots	Thu 12am	Thu 1am	Thu 2am	Thu 3am	Thu 4am	Thu 5am	Thu 6am	Thu 7am	Thu 8am	Thu 9am	Thu 10am	Thu 11am	Thu 12pm	Thu 1pm	Thu 2pm	Thu 3pm	Thu 4pm	Thu 5pm	Thu 6pm	Thu 7pm	Thu 8pm	Thu 9pm	Thu 10pm	Thu 11pm	Fri 12am	Fri 1am	Fri 2am	Fri 3am	Fri 4am	Fri 5am	Fri 6am	Fri 7am	Fri 8am	Fri 9am	Fri 10am	Fri 11am						
610 Bridge	5 15 N	4 12 NNW	2 8 N	2 7 NW	3 8 NNW	3 8 WSW	2 6 NNW	2 5 NNW	2 9 WSW	3 10 NNW	5 12 NNW	7 14 NNW	7 16 NW	9 17 NW	9 14 NW	9 13 NW	7 11 NW	6 10 NNW	6 8 NNW	6 5 NNW	5 8 N	5 8 N	5 5 N	5 8 N	5 5 N	4 7 NNW	4 6 NNW	4 6 NNW	4 6 NW	4 6 NW	4 6 NW	4 6 NW	5 7 NW	5 10 NW	6 11 NW	7 11 NW						
Kinder 1	5 14 N	5 12 NNW	2 8 NNW	2 7 NNW	3 8 N	3 8 SSE	2 6 NNW	2 5 NNW	2 9 SW	2 10 NNW	4 11 NNW	5 14 NNW	7 17 NW	8 18 NW	9 14 NW	8 13 NW	7 11 NW	6 10 NNW	5 8 NNW	5 8 NNW	5 8 N	5 8 N	5 7 N	5 7 N	5 7 N	4 6 NNW	4 6 NNW	4 6 NW	4 6 NW	4 6 NW	4 6 NW	4 6 NW	5 7 NW	5 10 NW	6 11 NW	7 11 NW						
Greens Bayou	5 13 NNW	4 11 NNW	2 7 NNW	2 6 NNW	3 8 NE	3 6 NNW	2 5 NNW	2 4 W	2 9 NNW	2 10 NNW	4 11 NNW	5 13 NNW	7 17 NW	8 18 NW	9 14 NW	8 13 NW	7 11 NW	6 10 NNW	5 8 NNW	5 8 NNW	5 8 N	5 7 N	5 7 N	5 7 N	5 5 N	4 6 NNW	4 6 NNW	4 6 NW	4 6 NW	4 6 NW	4 6 NW	4 6 NW	5 7 NW	5 10 NW	6 11 NW	7 11 NW						
Shell Crude	4 12 NNW	4 11 NNW	2 8 NW	2 7 NNW	3 8 N	3 8 ENE	2 6 NNW	2 5 NNW	2 9 SW	2 10 NNW	4 11 NNW	5 13 NNW	7 17 NW	8 18 NW	9 14 NW	8 13 NW	7 11 NW	6 10 NNW	5 8 NNW	5 8 NNW	5 8 N	5 7 N	5 7 N	5 7 N	5 5 N	4 6 NNW	4 6 NNW	4 6 NW	4 6 NW	4 6 NW	4 6 NW	4 6 NW	5 7 NW	5 10 NW	6 11 NW	7 11 NW						
Lynchburg Ferries	4 12 NNW	4 11 NNW	2 8 NNW	2 7 NNW	3 8 ESE	3 6 NNW	2 5 NNW	2 4 W	2 9 NNW	2 10 NNW	4 11 NNW	5 13 NNW	7 17 NW	8 18 NW	9 14 NW	8 13 NW	7 11 NW	6 10 NNW	5 8 NNW	5 8 NNW	5 8 N	5 7 N	5 7 N	5 7 N	5 5 N	4 6 NNW	4 6 NNW	4 6 NW	4 6 NW	4 6 NW	4 6 NW	4 6 NW	5 7 NW	5 10 NW	6 11 NW	7 11 NW						
Exxon 3	4 12 NNW	4 11 NNW	3 9 NNW	3 8 NNW	3 9 SE	3 8 NNW	3 7 NNW	3 6 N	4 10 NNW	4 11 NNW	5 12 NNW	7 14 NNW	8 18 NW	9 14 NW	10 13 NW	9 12 NW	8 10 NNW	7 9 NNW	6 8 NNW	6 8 NNW	6 8 N	6 8 N	6 8 N	6 8 N	6 8 N	6 7 NNW	6 7 NNW	6 7 NW	6 7 NW	6 7 NW	6 7 NW	6 7 NW	6 7 NW	6 7 NW	6 7 NW	6 7 NW						
Morgans Point	6 14 NNW	5 14 NNW	5 11 NNW	4 10 NNW	4 11 N	5 11 SE	4 9 NNW	4 7 NNW	5 11 N	5 12 NNW	6 14 NNW	7 17 NW	8 18 NW	10 15 NW	11 14 NW	11 13 NW	9 11 NNW	8 10 NNW	8 9 NNW	8 8 NNW	8 8 N	8 8 N	8 8 N	8 8 N	8 8 N	8 7 NNW	8 7 NNW	8 7 NW	8 7 NW	8 7 NW	8 7 NW	8 7 NW	8 7 NW	8 7 NW	8 7 NW	8 7 NW	8 7 NW					
75/76	11 17 N	10 16 NNW	9 14 N	8 12 N	8 11 WSW	9 12 NE	8 11 W	8 11 N	7 12 NNW	7 13 NNW	8 14 NNW	10 17 NW	11 18 NW	12 16 NW	12 15 NW	12 14 NNW	11 13 NNW	11 12 NNW	11 11 NNW	11 11 NNW	11 11 N	11 11 N	11 11 N	11 11 N	11 11 N	11 11 NNW	11 11 NNW	11 11 NW	11 11 NW	11 11 NW	11 11 NW	11 11 NW	11 11 NW	11 11 NW	11 11 NW	11 11 NW	11 11 NW					
63/64	13 18 N	12 16 N	11 14 N	10 13 NNE	11 12 ENE	11 11 ENE	7 9 NW	7 8 N	8 12 NNW	8 13 NNW	9 14 NNW	11 17 NW	12 18 NW	12 15 NW	12 14 NNW	12 13 NNW	12 12 NNW	12 12 NNW	12 12 NNW	12 12 NNW	12 12 N	12 12 N	12 12 N	12 12 N	12 12 N	12 12 NNW	12 12 NNW	12 12 NW	12 12 NW	12 12 NW	12 12 NW	12 12 NW	12 12 NW	12 12 NW	12 12 NW	12 12 NW	12 12 NW	12 12 NW				
51/52	13 18 N	13 16 N	11 14 N	10 13 ENE	11 12 N	11 11 NNE	7 9 SSE	8 12 NNW	8 13 NNW	9 14 NNW	11 17 NW	12 18 NW	12 15 NW	12 14 NNW	12 13 NNW	12 12 NNW	12 12 NNW	12 12 NNW	12 12 NNW	12 12 NNW	12 12 N	12 12 N	12 12 N	12 12 N	12 12 N	12 12 NNW	12 12 NNW	12 12 NW	12 12 NW	12 12 NW	12 12 NW	12 12 NW	12 12 NW	12 12 NW	12 12 NW	12 12 NW	12 12 NW	12 12 NW	12 12 NW			
37/38	13 18 N	13 16 NNW	11 14 N	10 13 N	11 12 N	11 11 NNE	8 9 NNE	8 12 NNW	9 13 NNW	9 14 NNW	11 17 NW	12 18 NW	12 15 NW	12 14 NNW	12 13 NNW	12 12 NNW	12 12 NNW	12 12 NNW	12 12 NNW	12 12 NNW	12 12 N	12 12 N	12 12 N	12 12 N	12 12 N	12 12 NNW	12 12 NNW	12 12 NW	12 12 NW	12 12 NW	12 12 NW	12 12 NW	12 12 NW	12 12 NW	12 12 NW	12 12 NW	12 12 NW	12 12 NW	12 12 NW			
25/26	13 17 N	12 16 SSW	11 14 N	10 13 NNE	9 12 N	10 11 NNE	8 9 NNE	7 11 N	8 12 NNW	8 13 NNW	9 14 NNW	11 17 NW	12 18 NW	12 15 NW	12 14 NNW	12 12 NNW	12 12 NNW	12 12 NNW	12 12 NNW	12 12 NNW	12 12 N	12 12 N	12 12 N	12 12 N	12 12 N	12 12 NNW	12 12 NNW	12 12 NW	12 12 NW	12 12 NW	12 12 NW	12 12 NW	12 12 NW	12 12 NW	12 12 NW	12 12 NW	12 12 NW	12 12 NW	12 12 NW	12 12 NW		
11/12	11 16 NW	10 15 N	10 14 NNE	10 14 N	8 12 NNE	8 11 NNE	7 10 NNE	7 11 N	8 12 NNW	8 13 NNW	9 14 NNW	11 17 NW	12 18 NW	12 15 NW	12 14 NNW	12 12 NNW	12 12 NNW	12 12 NNW	12 12 NNW	12 12 NNW	12 12 N	12 12 N	12 12 N	12 12 N	12 12 N	12 12 NNW	12 12 NNW	12 12 NW	12 12 NW	12 12 NW	12 12 NW	12 12 NW	12 12 NW	12 12 NW	12 12 NW	12 12 NW	12 12 NW	12 12 NW	12 12 NW	12 12 NW	12 12 NW	
1 & 2 Bravo	14 16 E	13 15 N	14 15 SE	14 15 N	12 12 NNE	11 12 N	10 12 N	10 11 N	11 13 NW	11 14 NNW	10 12 NNW	9 11 NNW	10 16 NW	11 15 NW	12 14 NW	13 15 NW	14 16 NW	13 15 NNW	13 15 NNW	14 16 NNW	14 16 N	14 16 N	14 16 N	14 16 N	14 16 N	14 16 NNW	14 16 NNW	15 16 NW	15 16 NW	15 16 NW	15 16 NW	15 16 NW	15 16 NW	15 16 NW	15 16 NW	15 16 NW	15 16 NW	15 16 NW	15 16 NW	15 16 NW	15 16 NW	15 16 NW

NOTE: This is automated data that may/may not agree with the official BAM thinking that's found on the daily slides or special visibility report slides. This data should be used as a guide only

Houston Pilots: Thu. 12/28/2023



Forecast Discussion

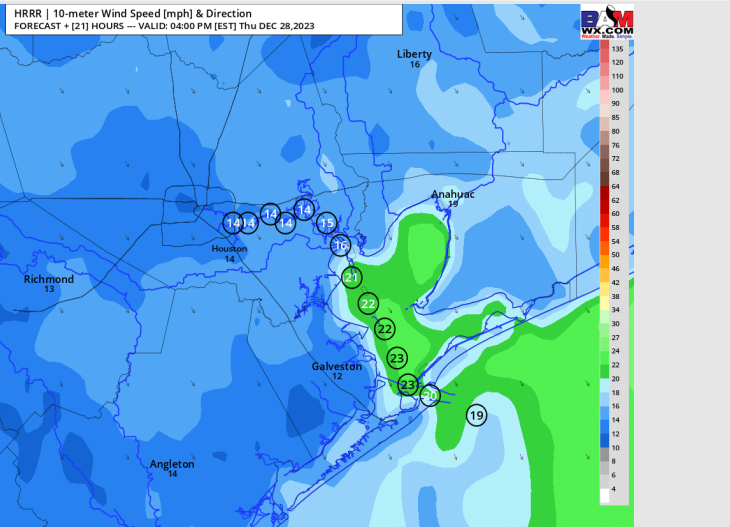
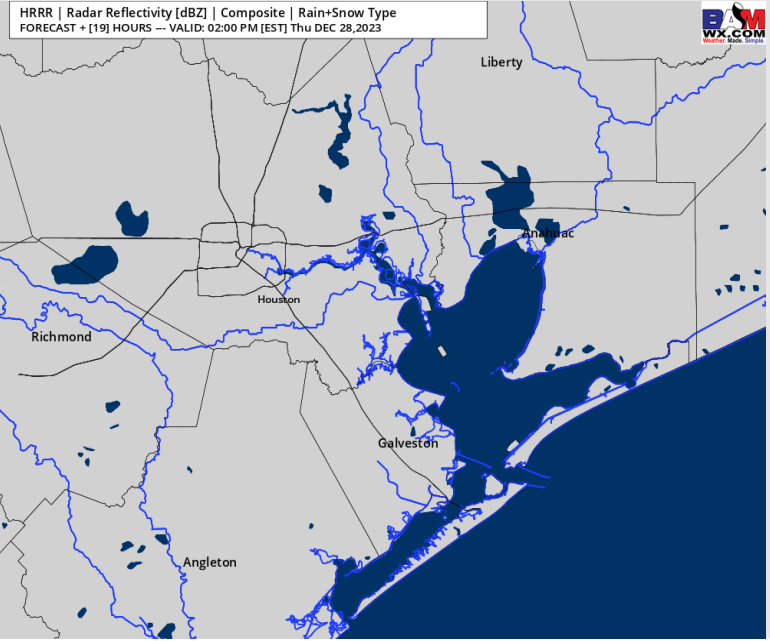
Precip: Favoring dry conditions for today.

Wind: NW winds to continue for all of today. **N Morgan's Point:** 4 - 7 kts favored through 9 AM. After 9 AM, 5 - 10 kts will be in play for the remainder of the day, except for 2 - 5 PM when winds of 7 - 12kts will be possible. **S of Morgan's Point:** Winds will be at 12- 16 kts through 11 AM. From 11 AM and onward, winds will increase to 14 - 19 kts. **Gusty winds of 20 - 24 kts will be possible for all stations S of Morgan's point for the entire day, with gusts reaching 26 kts south of 51/52 after 11 AM.**

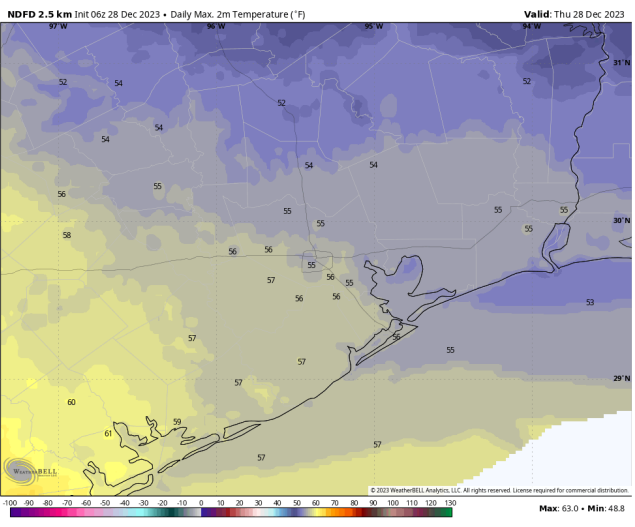
High Temps: **N of Morgan's Point:** Mid 50s F. **S of Morgan's Point:** Mid 50s F

Visibility: Not anticipating any visibility concerns,

Precip Image: 1 PM CT



Wind Speed:
3 PM CT



High Temps
Today

Houston Pilots: Fri. 12/29/2023



Forecast Discussion

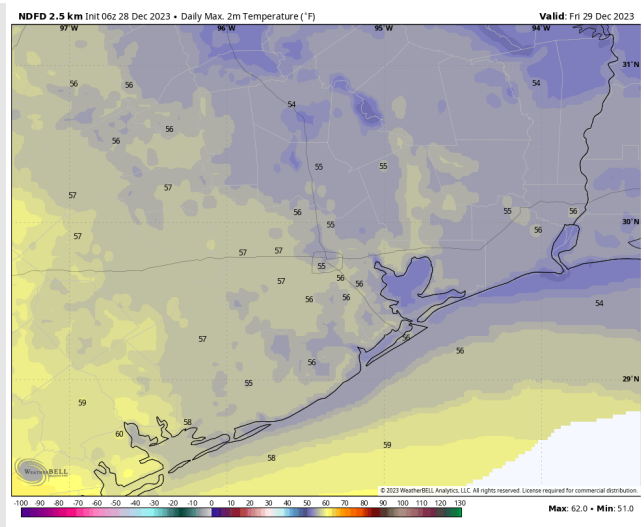
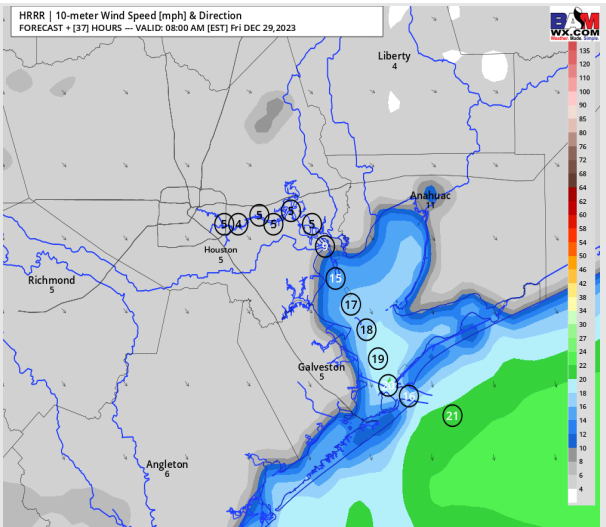
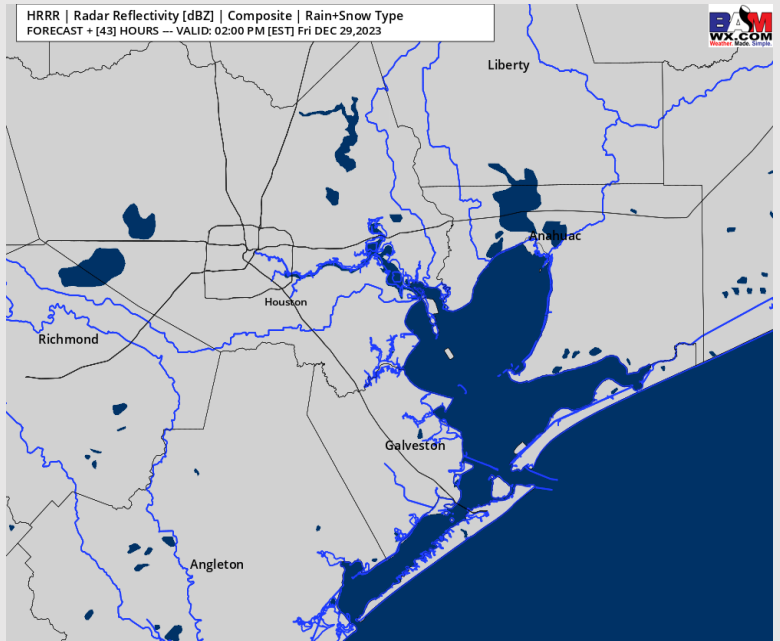
Precip: Favoring dry conditions for Friday.

Wind: NW winds to continue into Friday. **N Morgan's Point:** 3 – 6 kts favored through 12PM, before increasing to 8 – 11 kts for the remainder of the day. **S of Morgan's Point:** Winds will be at 11- 16 kts through 11AM, before weakening to 9 – 14 kts for the remainder of the day.

High temps: **N of Morgan's Point:** Mid 50s F **S of Morgan's Point:** Low to mid 50s F.

Visibility: No fog concerns favored for Friday.

Precip Image: 1 PM CT



Wind Speed:
7 AM CT

High Temps
Friday

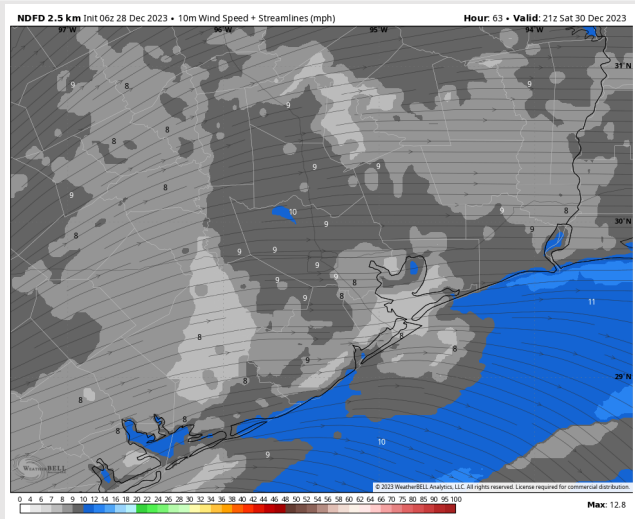
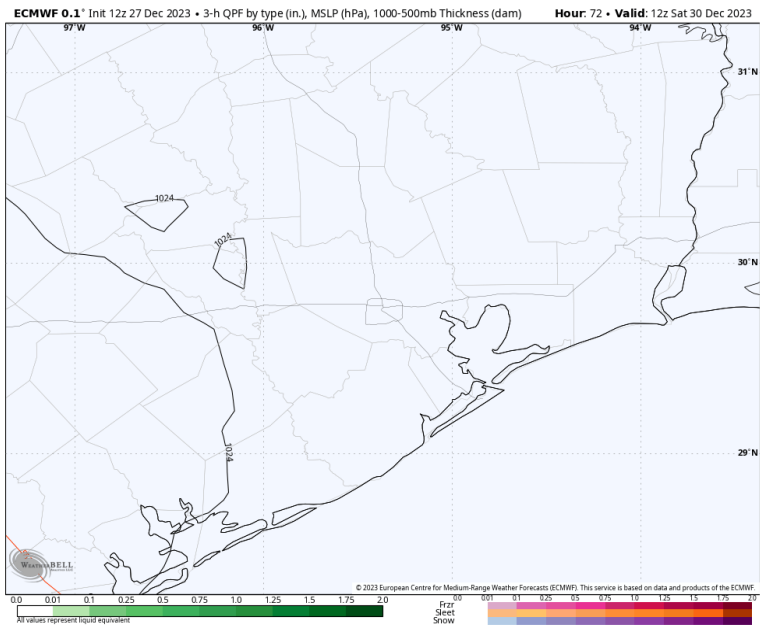
Houston Pilots: Sat. 12/30/2023



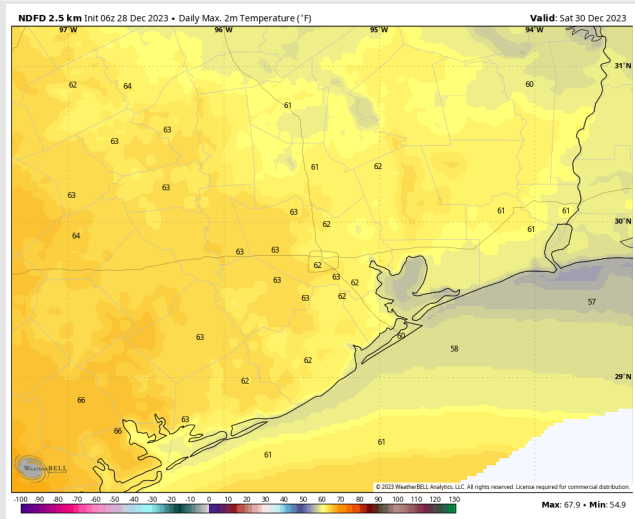
Forecast Discussion

- Precip:** Favoring dry conditions for Saturday.
- Wind:** Winds will gradually veer from the NW to the WSW after 3PM. **N of Morgan's Point:** Winds at 3 - 7 kts are favored for the entire day. **S of Morgan's Point:** Winds of 8 - 13 kts will be favored through 11AM, before weakening to 7 - 11 kts for the remainder of the day.
- High Temps:** Warmer **N of Morgan's Point:** Upper 50s F / Lower 60s F **S of Morgan's Point:** Upper 50s F
- Visibility:** No fog concerns favored for Saturday

Precip Image: 6 AM CT

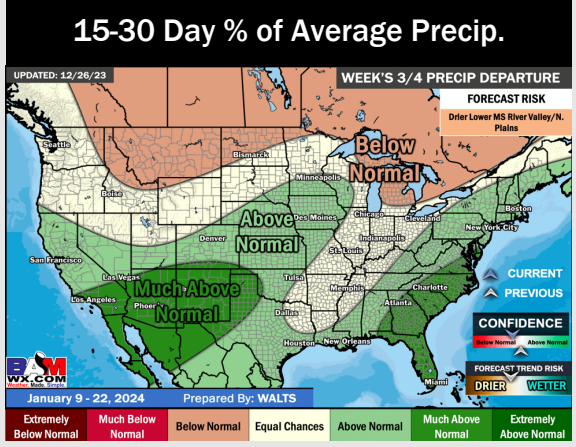
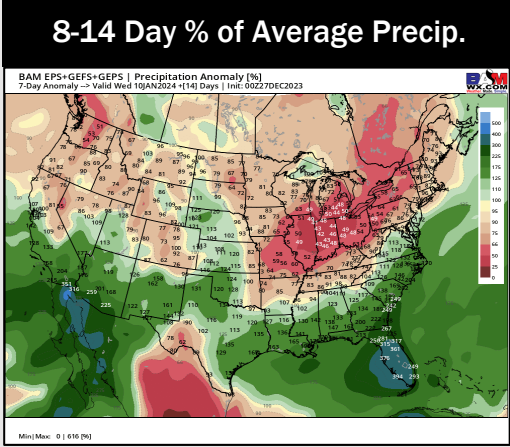
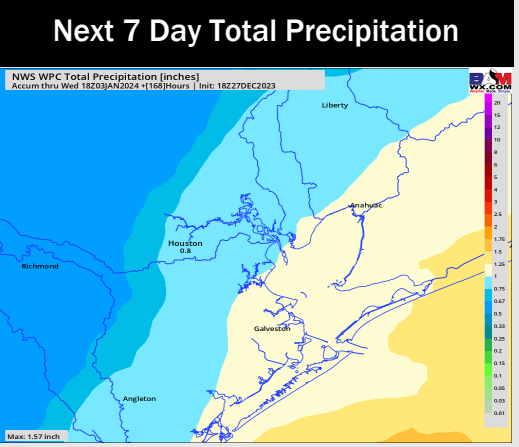
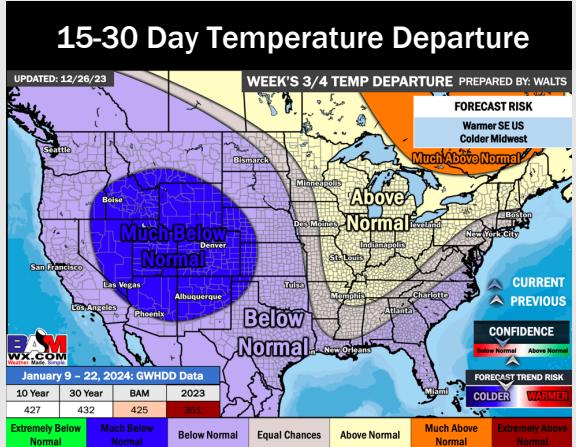
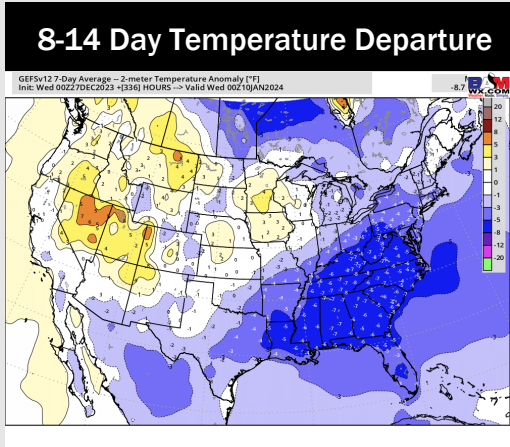
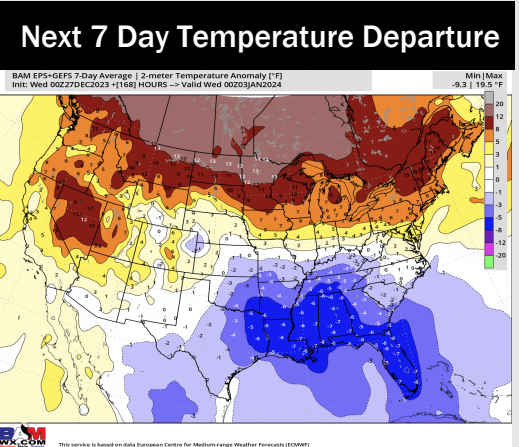


Wind Speed:
3 PM CT



High Temps
Saturday

Houston Pilots: 12/28/23



- A quiet second half of the week lies ahead with the next rain chance moving in Monday. Below normal temperatures are favored over the next week.
- Cooler temperatures and above normal rainfall is favored for the week 2 timeframe
- Below normal temperatures and above normal chances for precipitation are favored in the weeks 3/4 timeframe.