

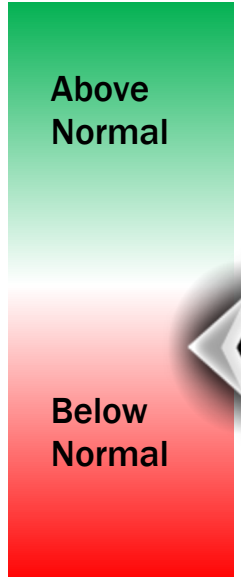
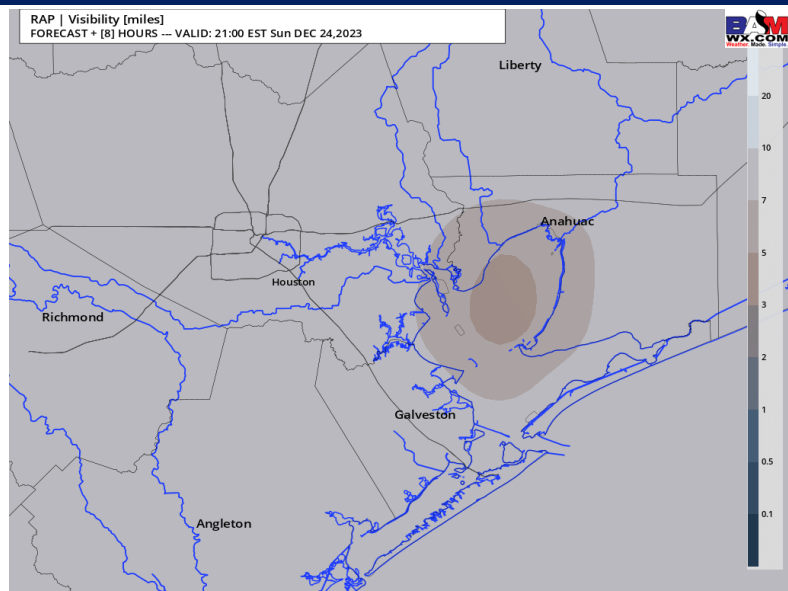
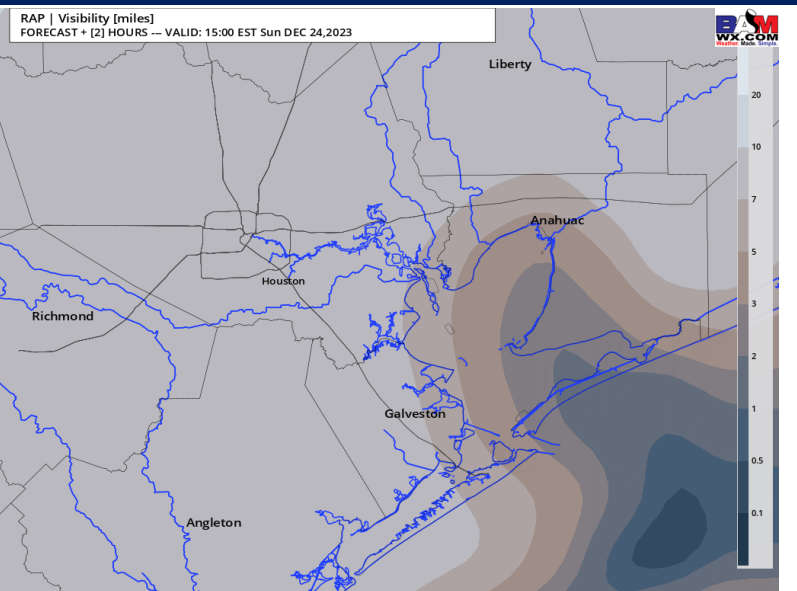
Houston Pilots Visibility Report



2 PM CT SUN VISIBILITY

8 PM CT SUN VISIBILITY

Confidence



TIMEFRAME DISCUSSED	THREAT
CURRENT - 10 PM CT SUN	MED

- Winds will look to remain generally calm (<10 kts at all stations) as a few scattered showers continue to taper off. The next window to watch (will be from about 2 PM CT - 8 PM CT where lighter rainfall + calm winds will pose a <2 mi visibility threat for all stations.
- Rain chances will completely exit near 8 PM CT this evening. As rain chances exit visibility is favored to slowly improve. The main risks of reduced visibility will exit by 10 PM CT this evening. While we are monitoring a low-end risk during the early AM hours on MON, better coverage will remain to the east of the HOU area.

Houston Pilots Forecast Package



Updated: 1:45 PM CT

Sunday, December 24, 2023

Forecaster: Tyler Riggles

Weather Headlines

- Check the slide above for information about fog through this afternoon.
- Winds do not look to be overly problematic the next few days aside from briefly stronger winds through this morning and a few gustier winds on MON.
- Rain chances are expected to continue through this evening, with a drier few days starting on Christmas Day.
- Fog threats look to end by Sunday evening as winds flip from the Northwest.



Radar/NWS Alerts: 1:37 PM CT



As always, please do not hesitate to reach out to us with any forecast questions via the chat option on the Weather Porthole or our on-call number, **(317)-560-8122** press 1 for forecast questions.

Houston Pilots Extended Range Visibility Report



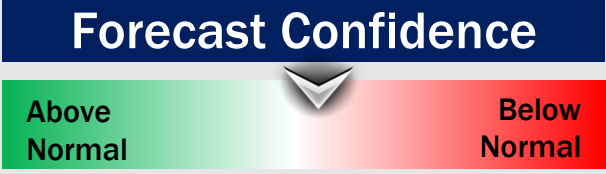
Wednesday 12/27/23

NW/N winds will continue to limit fog potential throughout the day Wednesday.



Thursday 12/28/23

No visibility concerns for Thursday at this time.



Friday 12/29/23

No visibility concerns for Friday at this time due to continued N/NW winds.



Chance for Fog

Wednesday AM	Unlikely
Wednesday PM	Unlikely
Thursday AM	Unlikely
Thursday PM	Unlikely
Friday AM	Unlikely
Friday PM	Unlikely

Houston Pilots Visibility Chart (miles)



Time	Sun 1pm	Sun 2pm	Sun 3pm	Sun 4pm	Sun 5pm	Sun 6pm	Sun 7pm	Sun 8pm	Sun 9pm	Sun 10pm	Sun 11pm	Mon 12am	Mon 1am	Mon 2am	Mon 3am	Mon 4am	Mon 5am	Mon 6am	Mon 7am	Mon 8am	Mon 9am	Mon 10am	Mon 11am	Mon 12pm	Mon 1pm	Mon 2pm	Mon 3pm	Mon 4pm	Mon 5pm	Mon 6pm	Mon 7pm	Mon 8pm	Mon 9pm	Mon 10pm	Mon 11pm	Tue 12am	
610 Bridge	10	10	10	10	10	10	10	10	10	10	10	10	10	10	10	10	10	10	10	10	10	10	10	10	10	10	10	10	10	10	10	10	10	10	10	10	10
Kinder 1	10	10	10	10	10	10	10	10	10	10	10	10	10	10	10	10	10	10	10	10	10	10	10	10	10	10	10	10	10	10	10	10	10	10	10	10	10
Greens Bayou	10	10	10	10	10	10	10	10	10	10	10	10	10	10	10	10	10	10	10	10	10	10	10	10	10	10	10	10	10	10	10	10	10	10	10	10	10
Shell Crude	10	10	10	10	10	10	10	10	10	10	10	10	10	10	10	10	10	10	10	10	10	10	10	10	10	10	10	10	10	10	10	10	10	10	10	10	10
Lynchburg Ferries	10	10	10	10	10	10	10	10	10	10	10	10	10	10	10	10	10	10	10	10	10	10	10	10	10	10	10	10	10	10	10	10	10	10	10	10	10
Exxon 3	10	10	10	10	10	10	10	10	10	10	10	10	10	10	10	10	10	10	10	10	10	10	10	10	10	10	10	10	10	10	10	10	10	10	10	10	10
Morgans Point	10	10	10	10	10	10	10	10	10	10	10	10	10	10	10	10	10	10	10	10	10	10	10	10	10	10	10	10	10	10	10	10	10	10	10	10	10
75/76	10	10	10	10	10	10	10	10	10	10	10	10	10	10	10	10	10	10	10	10	10	10	10	10	10	10	10	10	10	10	10	10	10	10	10	10	10
63/64	10	10	10	10	10	10	10	10	10	10	10	10	10	10	10	10	10	10	10	10	10	10	10	10	10	10	10	10	10	10	10	10	10	10	10	10	10
51/52	10	10	10	10	10	10	10	10	10	10	10	10	10	10	10	10	10	10	10	10	10	10	10	10	10	10	10	10	10	10	10	10	10	10	10	10	10
37/38	10	10	10	10	10	10	10	10	10	10	10	10	10	10	10	10	10	10	10	10	10	10	10	10	10	10	10	10	10	10	10	10	10	10	10	10	10
25/26	10	10	10	10	10	10	10	10	10	10	10	10	10	10	10	10	10	10	10	10	10	10	10	10	10	10	10	10	10	10	10	10	10	10	10	10	10
11/12	10	10	10	10	10	10	10	10	10	10	10	10	10	10	10	10	10	10	10	10	10	10	10	10	10	10	10	10	10	10	10	10	10	10	10	10	10
1 & 2 Bravo	8	10	10	10	10	10	10	10	9	10	10	10	10	10	10	10	10	10	10	10	10	10	10	10	10	10	10	10	10	10	10	10	10	10	10	10	9

NOTE: This is automated data that may/may not agree with the official BAM thinking that's found on the daily slides or special visibility report slides. This data should be used as a guide only

Forecast Discussion

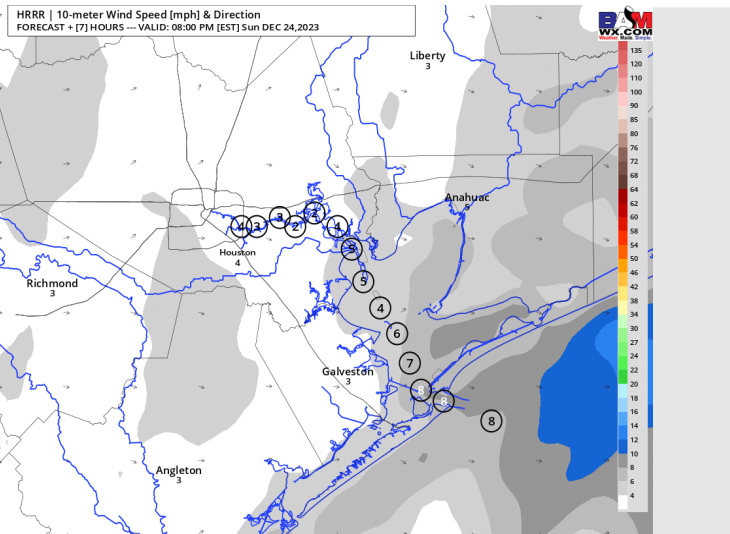
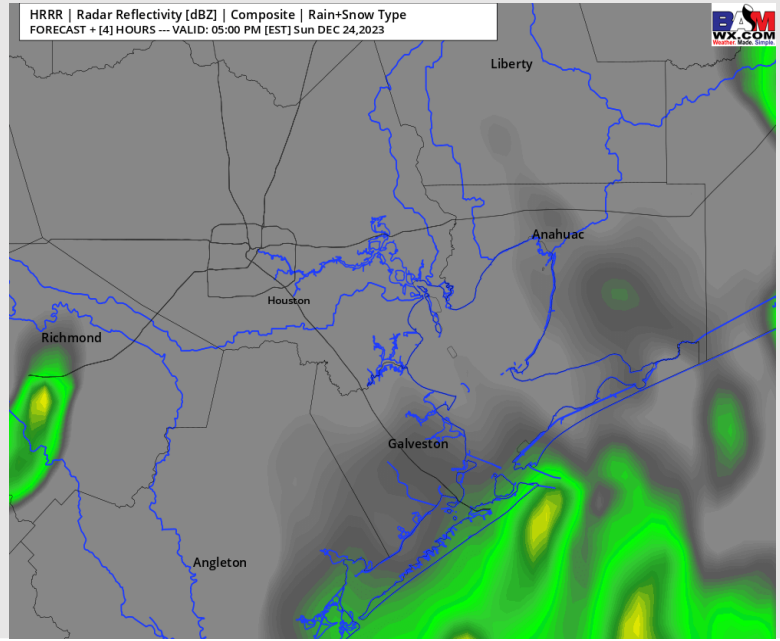
Precip: Scattered coverage will last through 3 PM when coverage will taper off through 8 PM gradually. After 8 PM, favoring dry conditions.

Wind: Winds will be variable in direction through the PM hours. **N of Morgan's Point:** Winds at 6-11 kts will decrease to 3-8 kts by 4 PM. **S of Morgan's Point:** Winds at 7-12 kts will decrease to 4-9 kts by 5 PM.

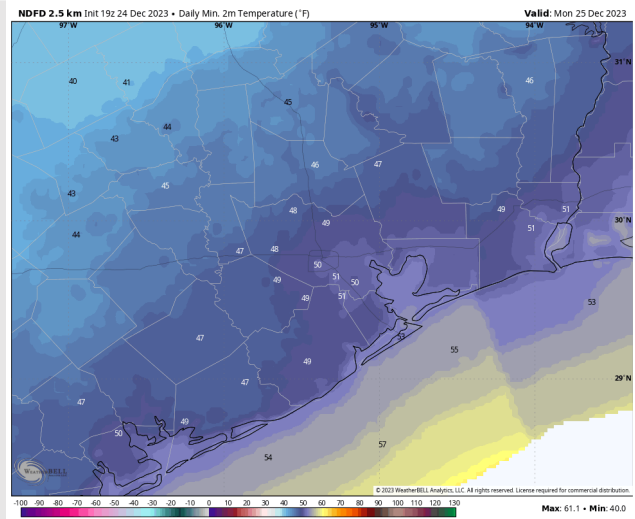
Low Temps: **N of Morgan's Point:** Low 50's F. **S of Morgan's Point:** Mid 50s F

Visibility: Check the Sunday Visibility analysis slide for more details on sea fog progression

Precip Image: 4 PM CT



Wind Speed:
7 PM CT



Low Temps
MON AM

Forecast Discussion

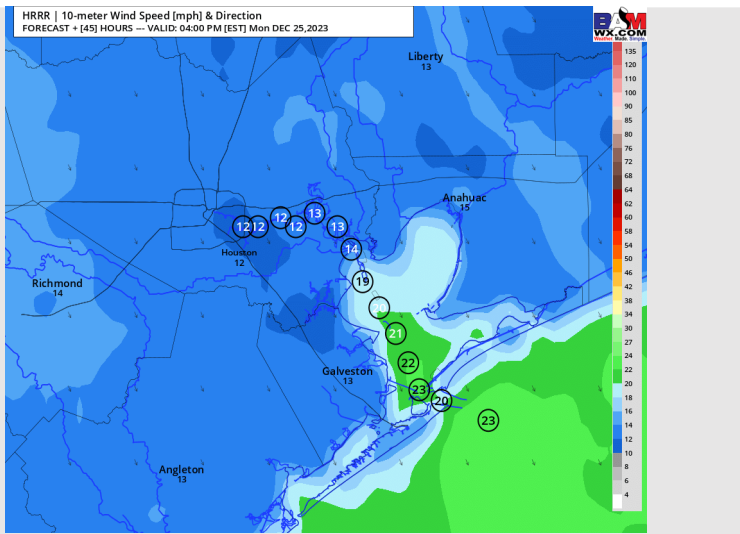
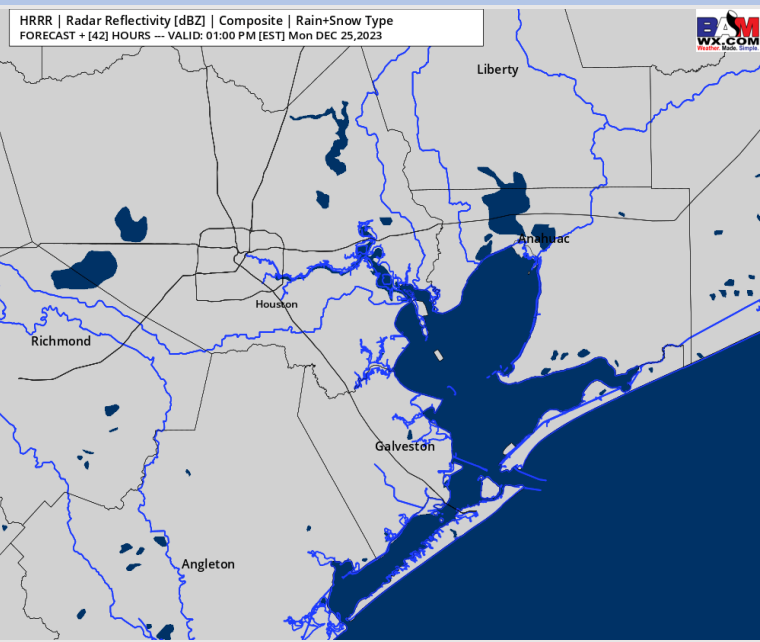
Precip: Favoring dry conditions for Christmas day.

Wind: WNW prior to sunrise, then NW winds thereafter. **N Morgan's Point:** Winds of 3-8 kts will increase 8-13 kts by 6 AM, before returning to 5-10 kts at 5 PM. **S of Morgan's Point:** Winds at 7 - 12 kts will increase to 13-18 kts by 5 AM. Winds revert to 7 - 12 kts by 5 PM. Boarding Station winds will remain slightly elevated at 12-16 kts after 5 PM. **Wind gusts of 22 -26 kts will be possible for the Boarding Station after 6 AM though 2 PM.**

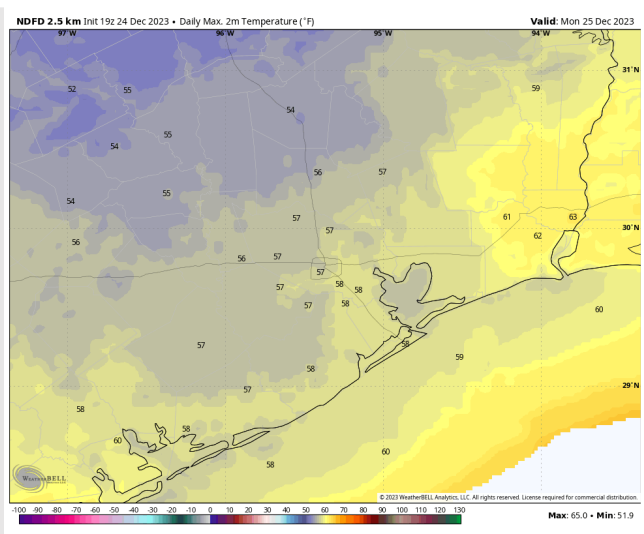
High Temps: Near 60 F across all stations.

Visibility: A low end risk of fog will be present early MON AM, however better coverage will remain to the East.

Precip Image: 12 PM CT



**Wind Speed:
3 PM CT**



**High Temps
Monday**

Forecast Discussion

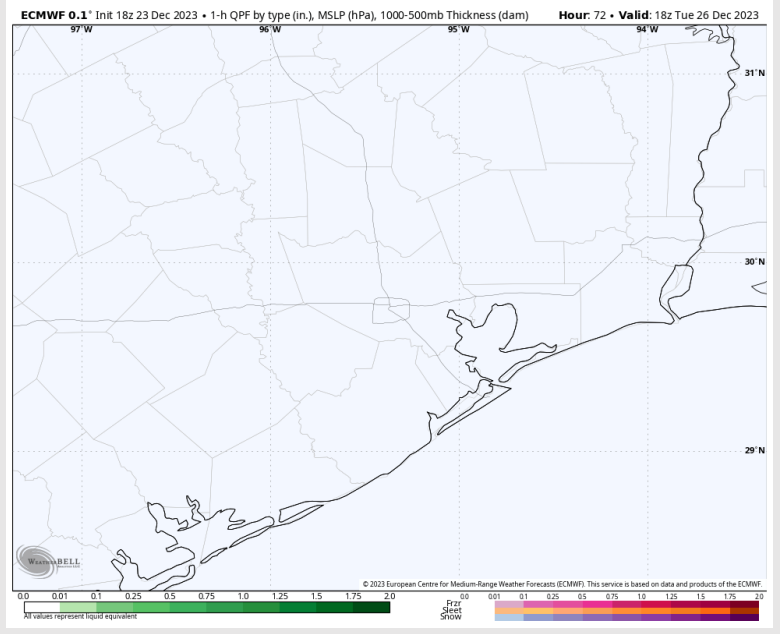
Precip: Favoring dry conditions for Tuesday.

Wind: Winds will start out of the NW and slowly veer the entire day. Direction will be out of the N by 6 AM, E by 12 PM, S by 5 PM, then remain out of the S/SW the rest of the day Tuesday. **N of Morgan's Point:** 4-8 kts the entire day. **S of Morgan's Point:** 8-13 kts through 8 AM, then decreasing 6-11 kts. Winds will decrease once again to 4-8 kts by 1 PM and remain there the rest of the PM Hours.

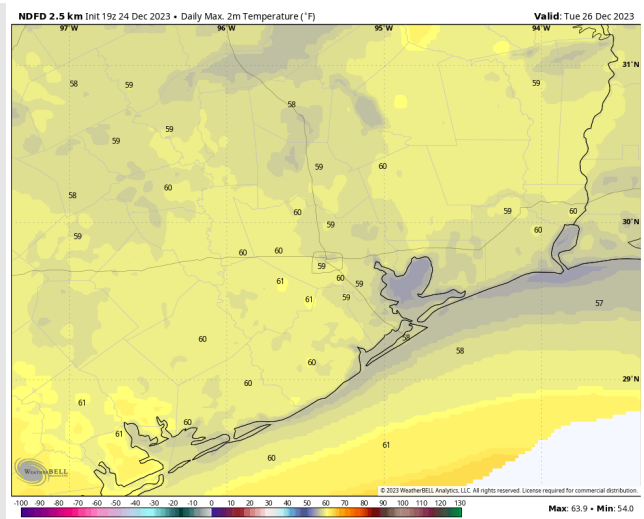
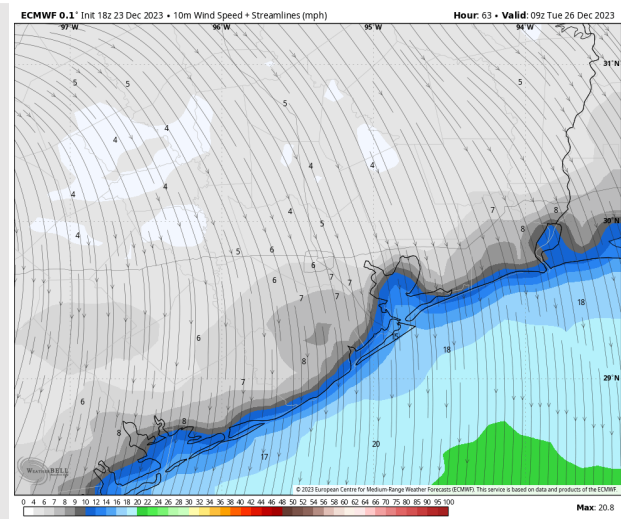
High temps: **N of Morgan's Point:** Nar 60 F. **S of Morgan's Point:** Mid to Upper 50s F.

Visibility: No visibility concerns are favored for Tuesday.

Precip Image: 12 PM CT

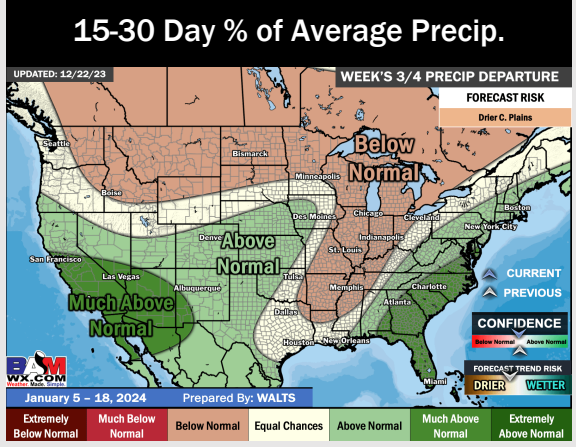
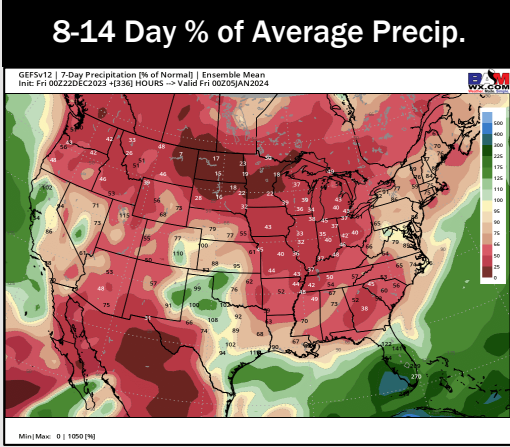
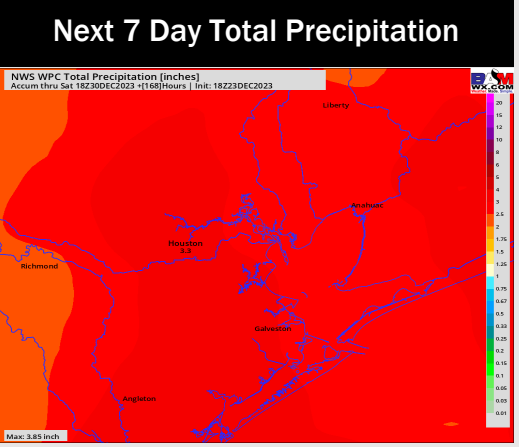
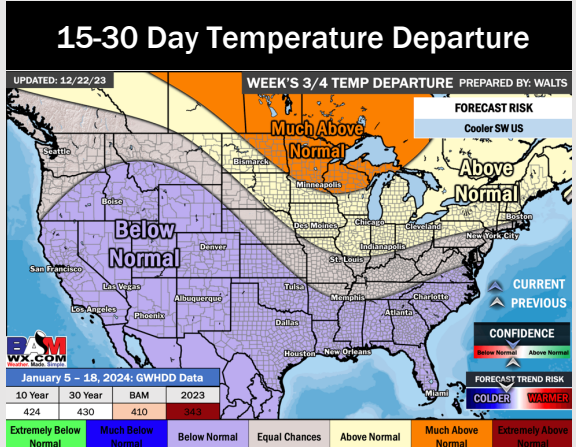
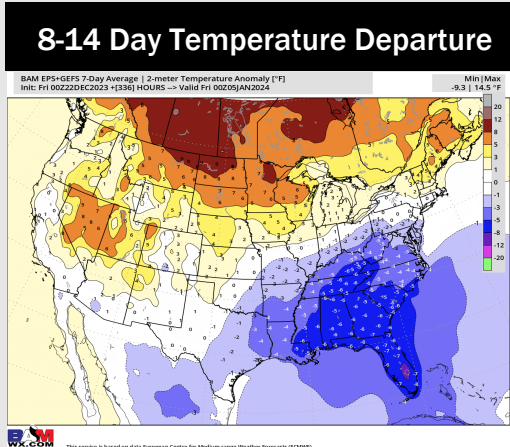
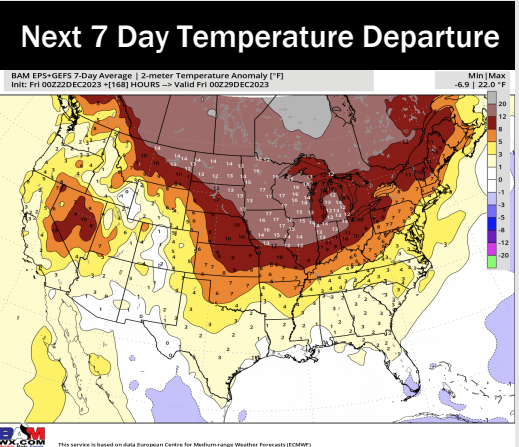


Wind Speed:
3 AM CT



High Temps
Tuesday

Houston Pilots: 12/24/23



- Today will offer up widespread, and at times heavy, rainfall opportunities. Outside of this weekend, the week ahead looks quite inactive. Above normal temperatures are expected until colder air fill behind a cold front after Monday.
- Cooler temperatures and near normal rain chances are at play for the week 2 timeframe.
- Below normal temperatures and near normal chances for precipitation are favored in the weeks 3/4 timeframe. There is a risk this can trend wetter given an active subtropical jet.