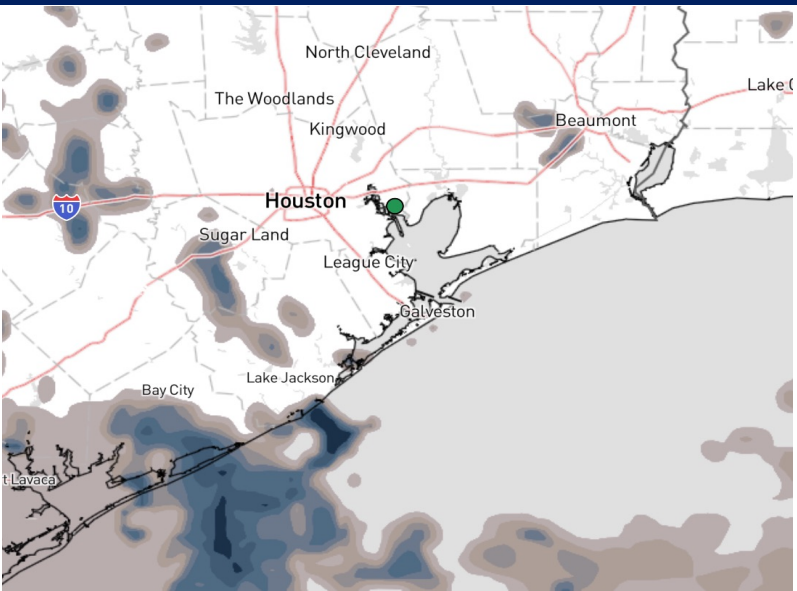


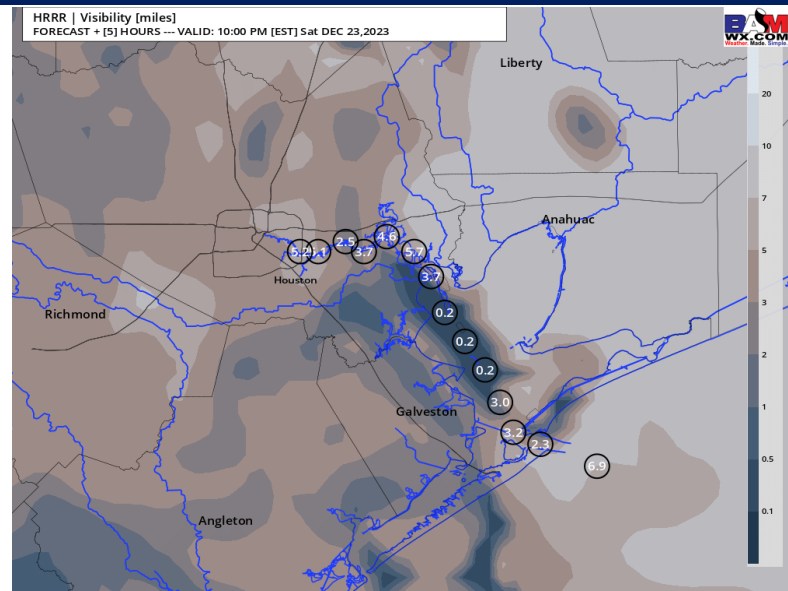
Houston Pilots Visibility Report



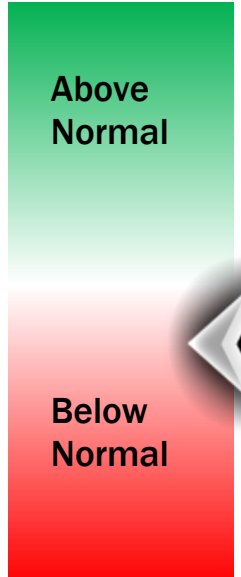
Current Visibility as of 5 PM CST



9 PM CT SAT VISIBILITY



Confidence



TIMEFRAME DISCUSSED	THREAT
CURRENT - 12 AM CT SUNDAY	LOW-MEDIUM

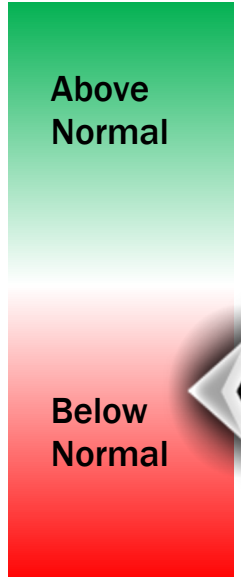
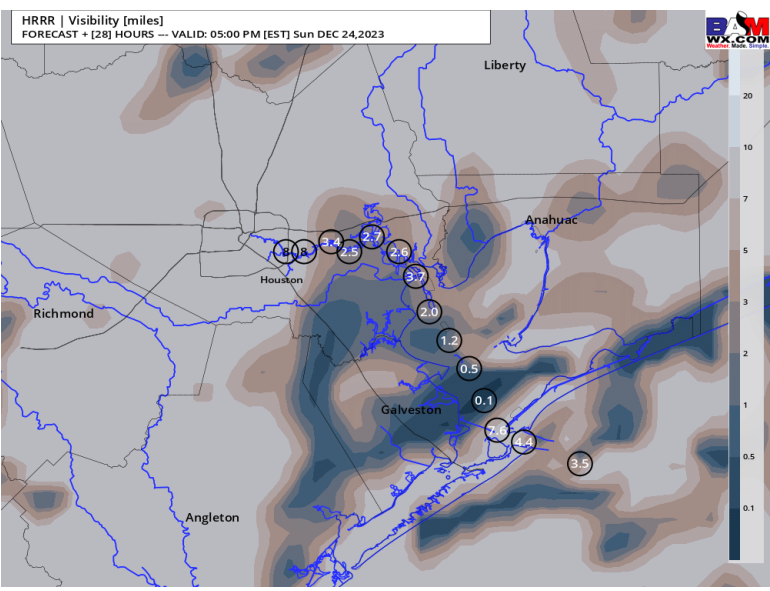
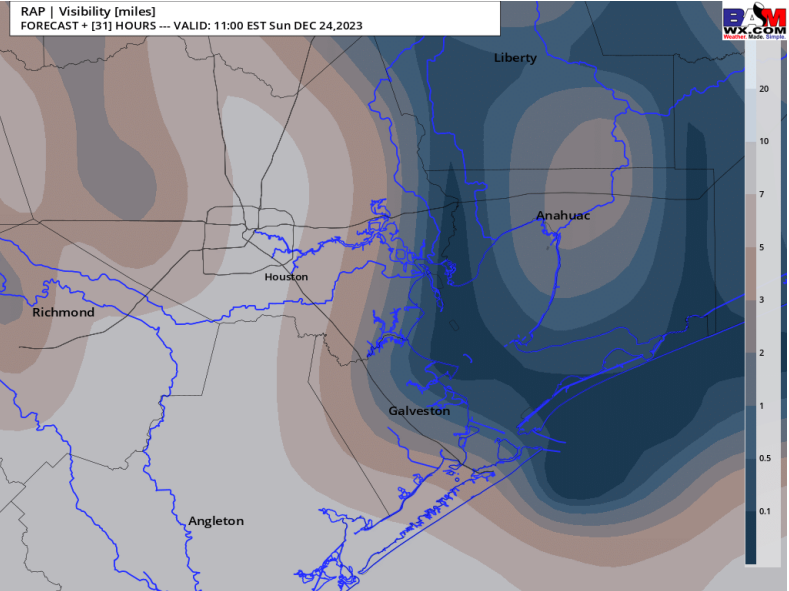
- After a brief lull in sea fog activity, now through 7 PM will be the key timeframe to watch for continued instances, although brief, of potentially dense sea fog (<1 mi vis) as rain continues to push in from the SW.
- Rain chances entering towards the 7-8 PM timeframe will certainly help to disperse/mix fog into the evening and thinking is by 8 PM that mixing can help partially lift sea fog, but widespread reduced visibility of 2-4 mi is anticipated across all stations once rain becomes more established by 9 PM CT.

Houston Pilots Visibility Report



6 AM CT SUN VISIBILITY 4 PM CT SAT VISIBILITY

Confidence



TIMEFRAME DISCUSSED	THREAT
1 AM CT SUN - 6 PM CT SUN	MED - HIGH

- Continuous scattered showers/thunderstorms from Saturday evening will continue throughout the AM hours of Sunday. While all stations are at risk for visibility reduction of 2-4 miles due to a rain/mist/fog, would need to watch near 3-4 AM for rainfall coverage to become lighter in nature/let up a tad
- It would be near 3-4 AM CT through roughly 8 AM CT where sea fog across all stations has the greatest risk. This would be due to a lack of rainfall and more of a "soupy" atmosphere. Visibility during this window can be dense of <1 mi visibility
- More pulses of rain enter near 9 AM CT, and this can again work to mix the atmosphere and improve visibility slightly to 2-5 miles.
- Rain chances will exit near 7 PM CT Sunday. As rain chances exit visibility is favored to slowly improve after sunset Sunday. Model data likely holds onto fog chances too long, but favoring near normal visibility by 11 PM CT SUN.

Houston Pilots Forecast Package



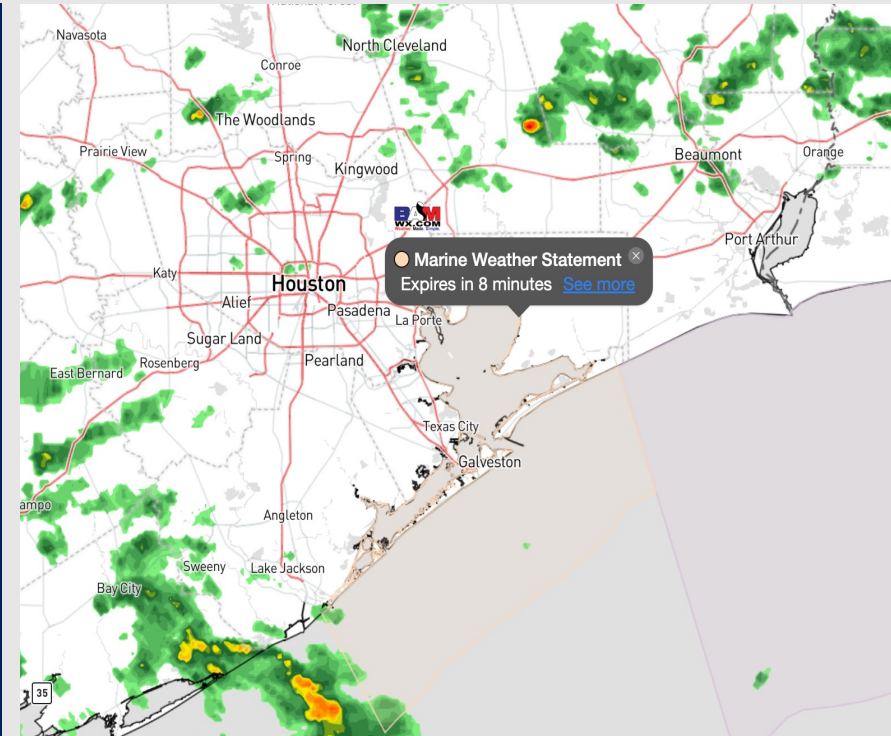
Updated: 2:40 PM CT

Saturday, December 23, 2023

Forecaster: Will Danby

Weather Headlines

- Check the slides above for information about fog through today into SUN afternoon.
- Winds do not look to be overly problematic the next few days aside from briefly stronger winds late tonight into SUN AM.
- Active weather is anticipated this evening into early SUN AM.
- Fog threats look to end by Sunday evening as winds flip from the Northwest.



Radar/NWS Alerts: 2:34 PM CT



As always, please do not hesitate to reach out to us with any forecast questions via the chat option on the Weather Porthole or our on-call number, **(317)-560-8122** press 1 for forecast questions.

Houston Pilots Extended Range Visibility Report



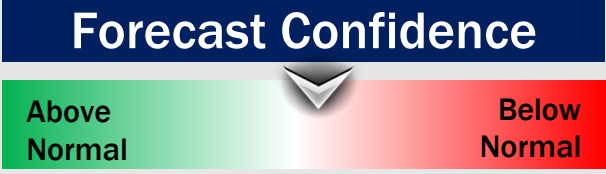
Tuesday 12/26/23

A shift back to winds from the NW/N will limit fog potential throughout the day Tuesday.



Wednesday 12/27/23

NW/N winds will continue to limit fog potential throughout the day Wednesday.



Thursday 12/28/23

No visibility concerns for Thursday at this time.



Chance for Fog

Tuesday AM	Unlikely
Tuesday PM	Unlikely
Wednesday AM	Unlikely
Wednesday PM	Unlikely
Thursday AM	Unlikely
Thursday PM	Unlikely

Houston Pilots Visibility Chart (miles)



Forecast Confidence



Time	Sat 5pm	Sat 6pm	Sat 7pm	Sat 8pm	Sat 9pm	Sat 10pm	Sat 11pm	Sun 12am	Sun 1am	Sun 2am	Sun 3am	Sun 4am	Sun 5am	Sun 6am	Sun 7am	Sun 8am	Sun 9am	Sun 10am	Sun 11am	Sun 12pm	Sun 1pm	Sun 2pm	Sun 3pm	Sun 4pm	Sun 5pm	Sun 6pm	Sun 7pm	Sun 8pm	Sun 9pm	Sun 10pm	Sun 11pm	Mon 12am	Mon 1am	Mon 2am	Mon 3am	Mon 4am		
610 Bridge	10	8	6	3	4	3	3	2	2	2	2	2	3	3	2	2	3	4	4	5	6	7	10	10	10	10	10	9	6	6	8	9	10	10	10	10	10	
Kinder 1	10	8	6	4	4	3	3	2	2	2	2	2	3	3	2	2	4	4	4	5	6	7	10	10	10	10	10	8	6	6	7	9	10	10	10	10	10	
Greens Bayou	10	8	6	4	4	3	3	2	2	2	3	2	2	3	2	2	4	6	4	5	6	6	10	10	10	10	10	7	6	6	7	9	10	10	10	10	10	
Shell Crude	10	8	6	5	4	3	3	2	2	2	3	2	3	4	2	2	4	7	4	5	6	6	10	10	10	10	10	7	6	6	7	8	10	10	10	10	10	
Lynchburg Ferries	10	8	6	5	4	3	3	2	2	3	3	3	3	3	2	2	5	7	4	5	6	6	10	10	10	10	10	7	6	6	7	8	10	10	10	10	10	
Exxon 3	10	8	6	5	4	3	3	2	2	2	3	4	5	4	3	2	6	7	4	5	6	6	9	10	10	10	10	9	6	6	6	7	7	10	10	10	10	10
Morgans Point	10	7	6	5	4	4	3	3	2	2	4	4	5	4	3	2	7	7	4	5	6	6	9	10	10	10	10	9	6	6	6	7	7	10	10	10	10	10
75/76	10	7	6	5	4	4	3	4	2	4	4	4	5	4	4	3	7	7	4	5	6	6	9	10	10	10	9	6	6	6	7	7	9	10	10	10	10	
63/64	9	7	6	5	4	4	3	4	2	4	4	5	6	4	4	3	7	7	4	5	6	6	9	9	10	10	9	6	6	5	6	7	8	10	10	10	10	
51/52	9	7	6	5	3	4	3	4	2	4	4	6	6	5	4	3	7	7	4	5	6	6	9	9	10	10	9	6	6	5	6	7	8	10	10	10	10	
37/38	8	7	6	5	4	4	4	4	2	4	4	6	6	5	4	3	7	7	4	5	6	6	9	9	10	10	9	6	6	6	7	7	8	10	10	10	10	
25/26	8	7	6	5	4	4	4	4	2	4	4	6	6	6	5	3	7	7	5	5	6	6	9	9	10	10	9	6	6	7	7	7	8	10	10	10	10	
11/12	8	7	6	5	4	4	4	4	2	4	4	6	6	6	5	3	7	7	5	5	6	6	9	9	10	10	9	6	6	7	7	7	8	10	10	10	10	
1 & 2 Bravo	7	6	6	5	4	4	3	4	3	4	4	6	6	4	5	3	7	6	4	5	5	5	6	6	6	6	6	5	5	6	7	7	8	8	9	9	9	

NOTE: This is automated data that may/may not agree with the official BAM thinking that's found on the daily slides or special visibility report slides. This data should be used as a guide only

Houston Pilots Wind Chart



Forecast Confidence



Example

Sustained wind 13 Knots
 Gusts 18 Knots
 Wind from the N

WS: 13
 G:18
 N

Time Knots	Sat 1pm	Sat 2pm	Sat 3pm	Sat 4pm	Sat 5pm	Sat 6pm	Sat 7pm	Sat 8pm	Sat 9pm	Sat 10pm	Sat 11pm	Sat 12am	Sun 1am	Sun 2am	Sun 3am	Sun 4am	Sun 5am	Sun 6am	Sun 7am	Sun 8am	Sun 9am	Sun 10am	Sun 11am	Sun 12pm	Sun 1pm	Sun 2pm	Sun 3pm	Sun 4pm	Sun 5pm	Sun 6pm	Sun 7pm	Sun 8pm	Sun 9pm	Sun 10pm	Sun 11pm	Sun 12am	Mon
610 Bridge	8 11	9 14	9 15	9 17	8 18	7 18	8 18	7 16	7 18	7 17	7 13	5 14	4 15	6 17	7 19	13 19	11 17	10 15	9 14	9 13	9 14	8 13	8 12	7 11	6 10	6 8	5 7	5 6	4 5	4 5	3 5	3 5	3 5	3 5	4 6	4 6	4 7
Kinder 1	8 12	9 14	9 16	9 17	8 18	8 19	8 18	7 17	8 18	7 18	5 14	5 14	5 15	6 18	7 20	13 20	11 17	10 16	9 15	9 14	9 14	8 13	8 12	7 11	6 10	6 9	5 7	5 6	4 5	4 5	3 5	3 5	3 5	3 5	4 6	4 6	4 7
Greens Bayou	9 14	10 16	9 17	9 19	8 19	8 20	8 19	8 19	9 20	8 19	8 13	5 13	5 16	5 17	7 18	7 19	14 21	12 18	11 17	10 15	9 14	9 13	8 12	7 11	6 10	6 9	5 7	5 6	4 5	4 5	3 5	3 5	3 5	3 5	4 6	4 6	4 7
Shell Crude	9 15	10 16	9 17	9 19	9 19	8 20	8 19	8 19	9 20	8 19	8 13	5 13	6 16	6 19	6 17	14 21	12 18	11 17	10 16	9 15	9 14	9 13	8 12	7 11	7 10	6 9	5 7	5 6	4 5	4 5	3 5	3 5	3 5	3 5	4 6	4 6	4 7
Lynchburg Ferries	9 16	9 16	9 17	9 20	9 20	9 21	9 20	9 20	10 22	10 19	10 13	5 12	7 16	8 18	5 14	14 21	12 18	11 17	10 16	10 15	10 14	9 13	8 12	7 11	6 10	6 9	5 7	5 6	4 5	4 5	3 5	3 5	3 5	3 5	4 6	4 6	4 7
Exxon 3	9 17	9 18	8 18	9 20	9 21	9 20	9 20	9 20	10 21	8 18	8 12	5 6	7 7	8 14	5 20	14 18	12 17	11 16	10 15	11 16	11 14	9 13	8 11	7 11	6 9	6 8	5 7	5 6	4 5	4 5	3 5	3 5	3 5	4 6	4 6	4 7	
Morgans Point	8 18	8 18	9 19	10 20	10 21	10 19	10 19	10 20	12 21	8 16	3 9	7 12	8 15	7 14	7 15	14 19	13 17	12 16	11 16	11 16	10 14	10 13	8 12	8 11	6 10	6 9	6 8	5 7	5 6	4 5	4 5	3 5	3 5	3 5	4 6	4 6	5 7
75/76	7 18	7 18	9 19	10 19	11 20	11 17	11 15	11 14	13 21	14 21	6 13	4 12	7 15	9 14	9 16	15 18	13 17	13 16	13 15	12 15	12 14	12 13	10 16	9 15	8 12	7 10	7 9	6 8	6 6	5 6	5 6	4 6	4 6	4 6	5 7	5 7	6 7
63/64	8 18	8 17	9 18	10 17	11 18	10 17	10 17	10 17	11 17	10 12	5 9	6 11	7 13	9 15	9 18	14 18	14 17	14 17	12 15	12 15	12 15	10 13	9 12	8 11	7 10	7 9	6 8	6 7	5 7	5 6	4 5	4 5	3 5	3 5	4 6	4 6	7 8
51/52	9 19	8 17	8 16	10 16	11 16	11 15	11 14	9 13	11 15	8 13	6 11	6 11	7 11	6 11	7 11	14 18	13 18	13 18	12 16	12 16	12 15	10 13	9 12	8 11	7 10	7 9	6 8	6 7	5 6	5 6	4 5	4 5	3 5	3 5	4 6	4 6	6 7
37/38	10 18	9 16	9 16	9 15	10 15	11 16	9 16	9 17	9 16	8 15	7 12	8 12	6 11	3 11	8 22	14 18	13 19	13 18	12 16	12 16	12 14	12 13	10 12	9 11	8 10	7 9	6 8	6 7	5 6	5 6	4 5	4 5	3 5	3 5	4 6	4 6	6 7
25/26	10 18	9 16	9 15	10 15	11 15	10 17	10 18	10 16	11 18	9 14	7 12	8 12	7 12	4 12	12 19	13 18	13 18	13 16	12 15	12 14	12 15	10 12	9 11	8 10	7 9	6 8	6 7	5 6	5 6	4 5	4 5	3 5	3 5	4 6	4 6	7 8	
11/12	11 18	9 16	8 15	9 14	10 15	10 16	12 17	10 17	11 18	10 15	7 12	7 11	8 12	8 18	15 22	13 19	13 19	13 18	12 17	11 15	11 14	10 12	9 11	8 10	7 9	6 8	6 7	5 6	5 6	4 5	4 5	3 5	3 5	4 6	4 6	7 8	
1 & 2 Bravo	11 17	9 15	8 15	9 14	10 15	13 18	11 18	11 18	14 19	10 14	12 17	9 13	10 13	10 13	12 19	12 15	16 21	15 20	15 19	14 18	13 16	12 15	10 13	9 12	8 11	7 10	6 9	6 8	5 7	5 7	4 6	4 6	3 5	3 5	4 6	4 7	8 9

NOTE: This is automated data that may/may not agree with the official BAM thinking that's found on the daily slides or special visibility report slides. This data should be used as a guide only

Houston Pilots: Sat. 12/23/2023



Forecast Discussion

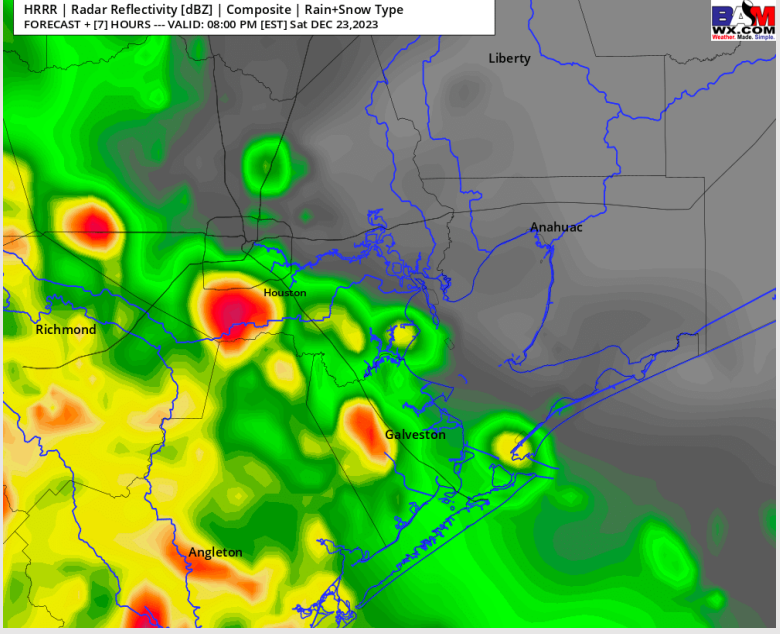
Precip: Favoring dry conditions for the most part prior to 7 PM across all stations (only minor 20% chances for drizzle present leading up to 7 PM). Leading edge of rain favored to reach near 8 PM CT and will be continuous through 12 AM.

Wind: Sustained SE winds can veer slightly SSE near 9 PM. **N of Morgan's Point:** 7 - 12 kts through 11 PM, calming to 5 - 10 kts by 12 AM. **S of Morgan's Point:** 11 - 16 kts, increasing slightly with onset of rain chances to 14 - 19 kts near 8 PM. **Wind gusts of up to 22 - 24 kts will be possible across all stations through 5 PM, increasing to 24 - 28 kts after 8 PM with rain entering.**

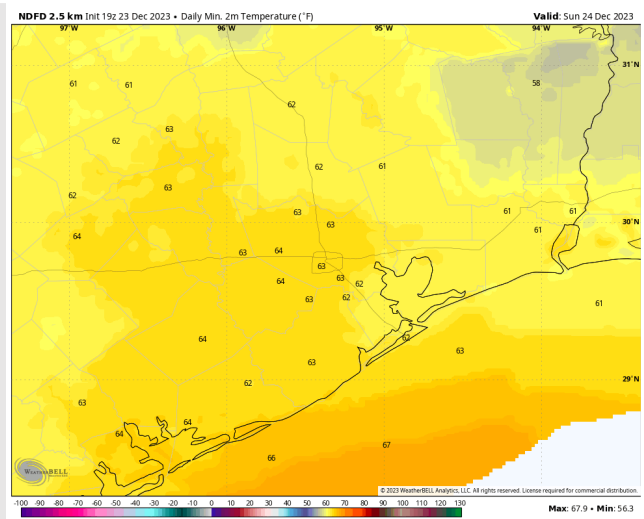
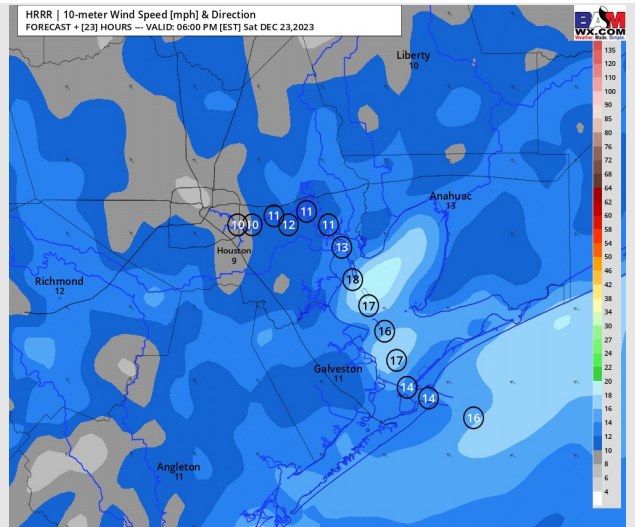
Low temps: Mild. **N of Morgan's Point:** Mid 60s F. **S of Morgan's Point:** Mid to low 60's F.

Visibility: More information about lower visibilities this PM on the first slide of report.

Precip Image: 7 PM CT



Wind Speed:
5 PM CT



High Temps
Today

Houston Pilots: Sun. 12/24/2023



Forecast Discussion

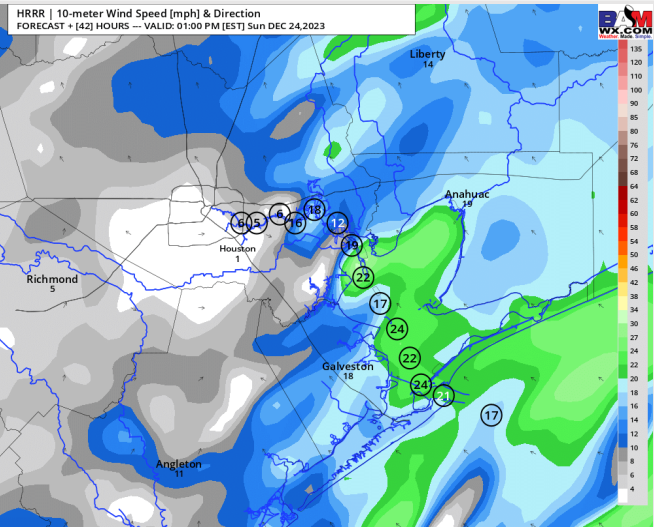
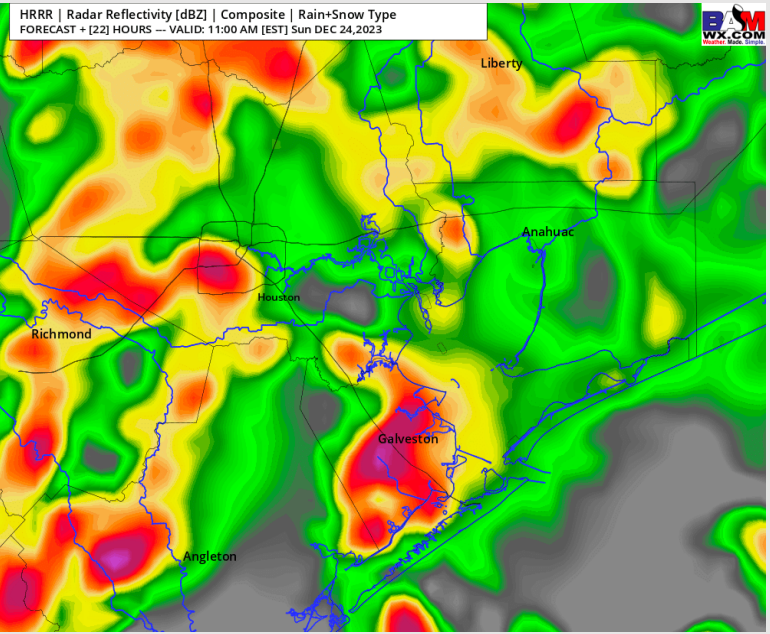
Precip: Consistent coverage will become more scattered near 2 AM - 8 AM. Chances here would be a split of dry and wet time at 50%. After 8 AM coverage fills in slightly, with 70% chances of rain from 8 AM - 5 PM. Coverage tapers off from 5 PM - 7 PM, leaving dry conditions after 7 PM.

Wind: S to SE winds anticipated in the AM hours, with winds becoming variable in direction towards 1 PM. **N of Morgan's Point:** Winds at 8-13 kts will calm to 4 - 9kts by 1 PM and remain there for the rest of the day. **S of Morgan's Point:** Winds will remain at 14 - 19 kts in the AM hours. The Boarding Station and 11/12 can see an increasing trend, starting at 14-19 kts at 12 AM, increasing to 16 - 21 kts sustained by 4 AM. At/towards 1 PM, winds sharply drop back to 6 -11 kts and remain there for the afternoon hours. **Wind gusts prior to 10 AM across all stations can reach 26 - 30 kts.**

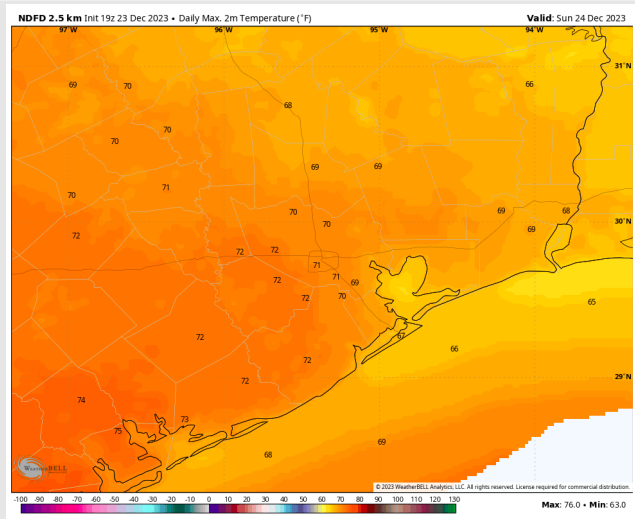
High Temps: **N of Morgan's Point:** Low 70's F. **S of Morgan's Point:** Mid to upper 60s F. Mid 60s F at the Boarding Station.

Visibility: Check the Sunday Visibility analysis slide for more details on sea fog progression

Precip Image: 10 AM CT



Wind Speed:
12 PM CT



High Temps
Sunday

Forecast Discussion

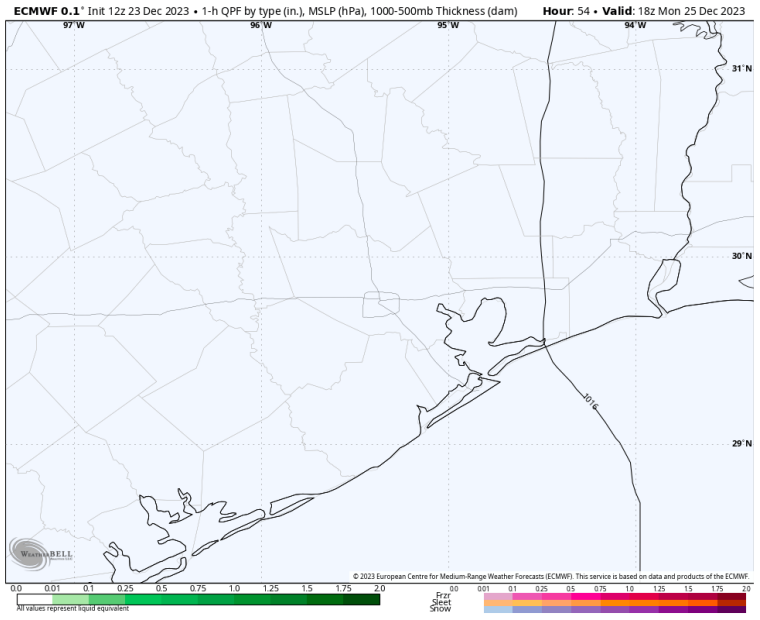
Precip: Favoring dry conditions for Christmas day.

Wind: WNW prior to sunrise, then NW winds thereafter. **N Morgan's Point:** Winds of 4-9 kts will increase slightly to 6-11 kts by 10 AM, before returning to 4-9 kts at 5 PM. **S of Morgan's Point:** Winds at 7 - 12 kts will increase to 10 -15 kts by 4 AM. Winds revert to 7 - 12 kts by Sunset. Boarding Station winds follow this same progression, with wind speeds faster by a scale of 2 kts. **Wind gusts of 22 -24 kts will be possible for the Boarding Station after 6 AM though 2 PM.**

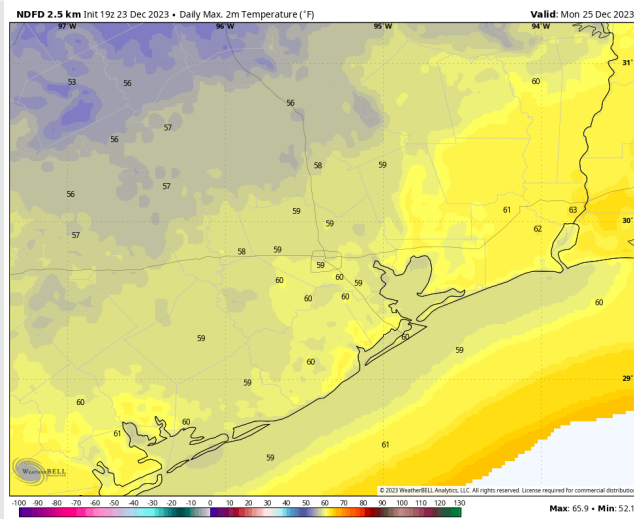
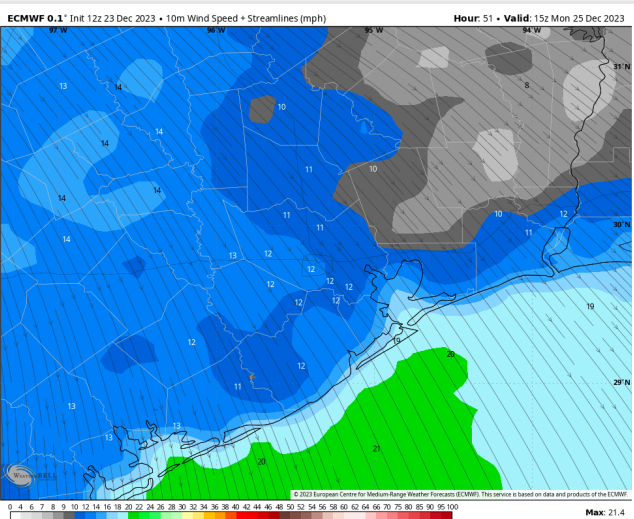
High Temps: Near 60 F across all stations.

Visibility: Not favoring any visibility concerns at this time.

Precip Image: 12 PM CT

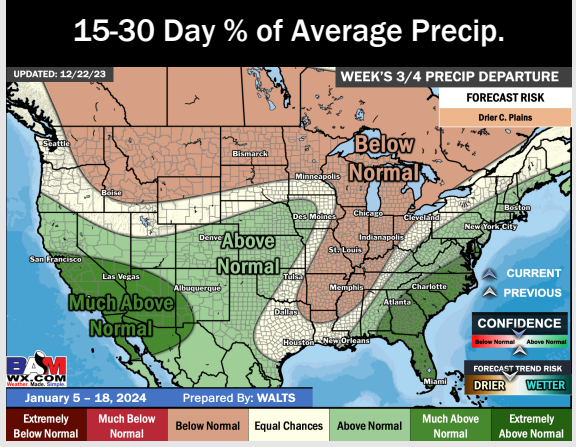
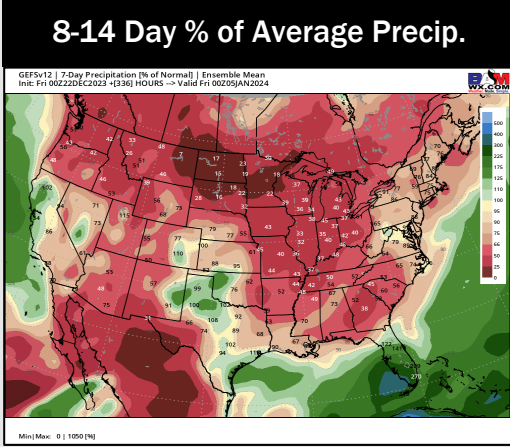
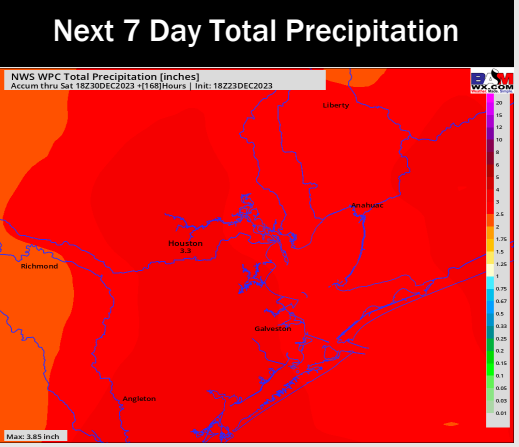
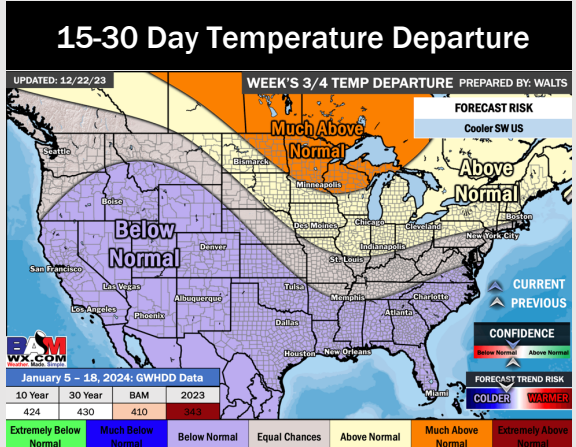
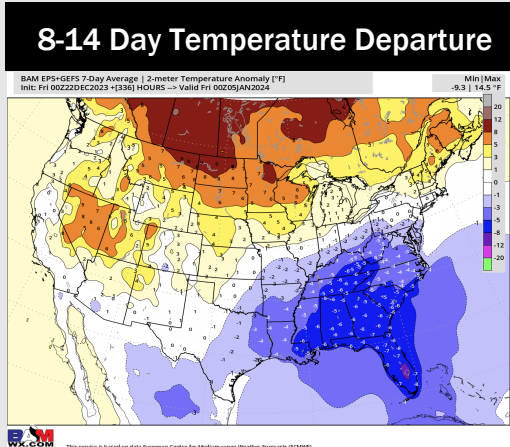
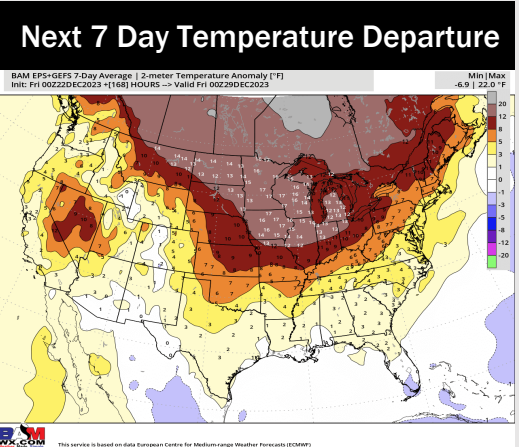


Wind Speed:
10 AM CT



High Temps
Monday

Houston Pilots: 12/23/23



- SAT evening through SUN PM will offer up widespread, and at times heavy, rainfall opportunities. Outside of this weekend, the week ahead looks quite inactive. Above normal temperatures are expected until colder air fill behind a cold front after Monday.
- Cooler temperatures and near normal rain chances are at play for the week 2 timeframe.
- Below normal temperatures and near normal chances for precipitation are favored in the weeks 3/4 timeframe. There is a risk this can trend wetter given an active subtropical jet.