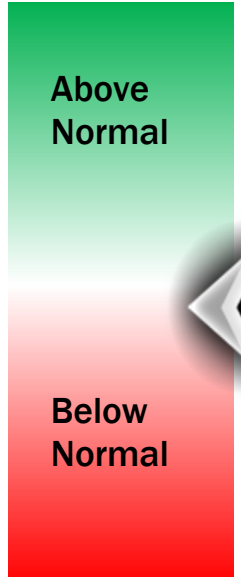
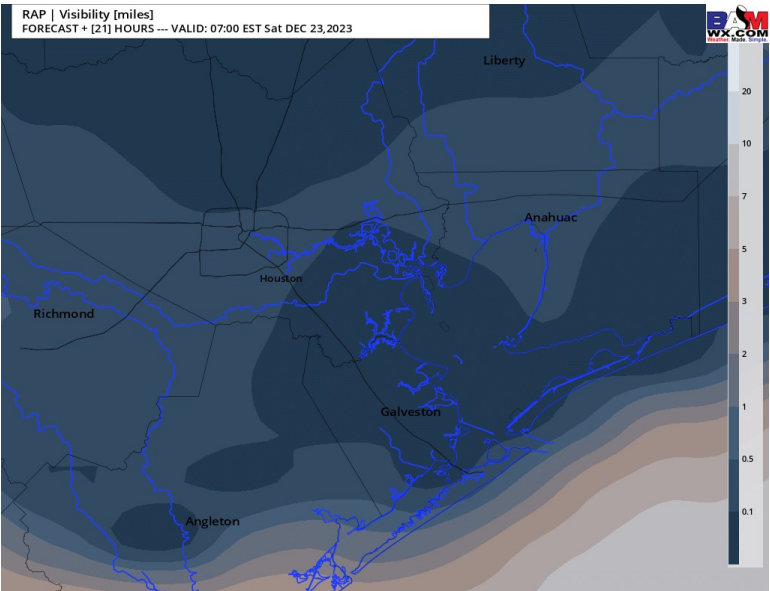
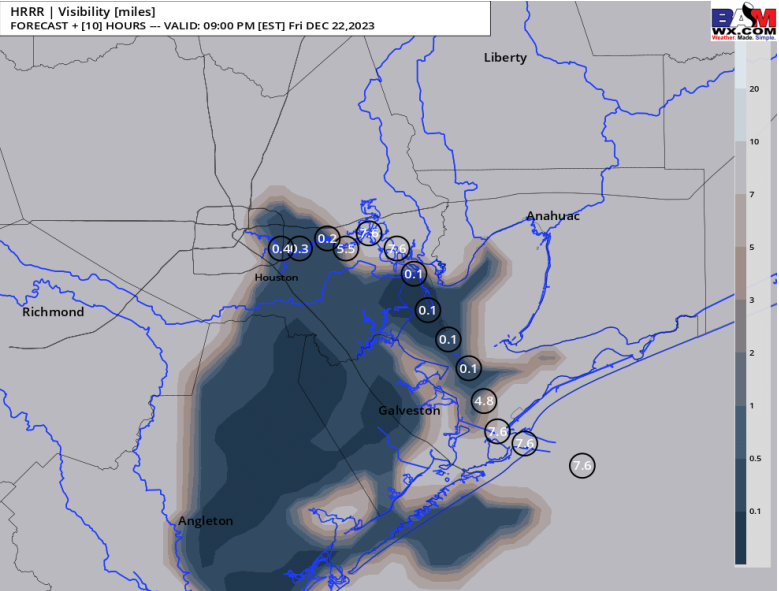


Houston Pilots Visibility Report



12 PM CT FRI VISIBILITY 6 AM CT SAT VISIBILITY

Confidence



TIMEFRAME DISCUSSED	THREAT
NOW - 12 PM SAT	MED-HIGH

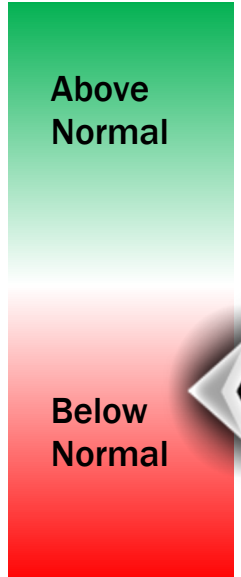
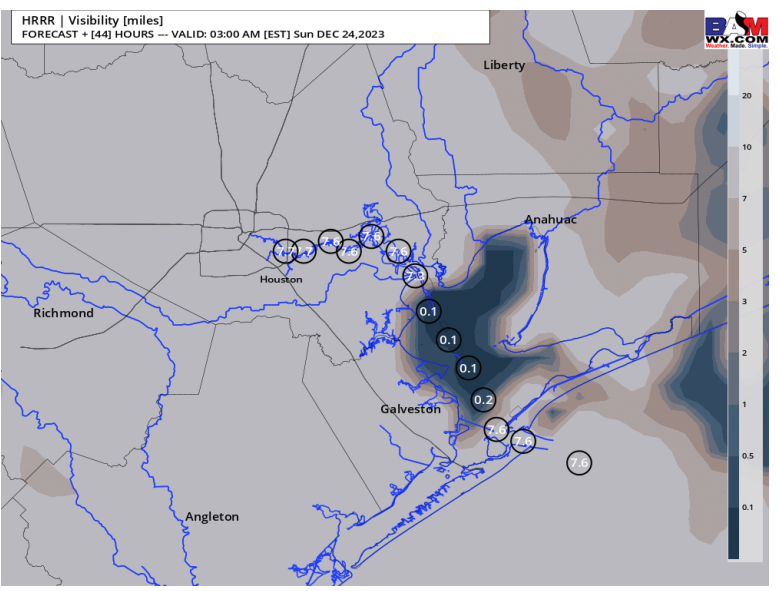
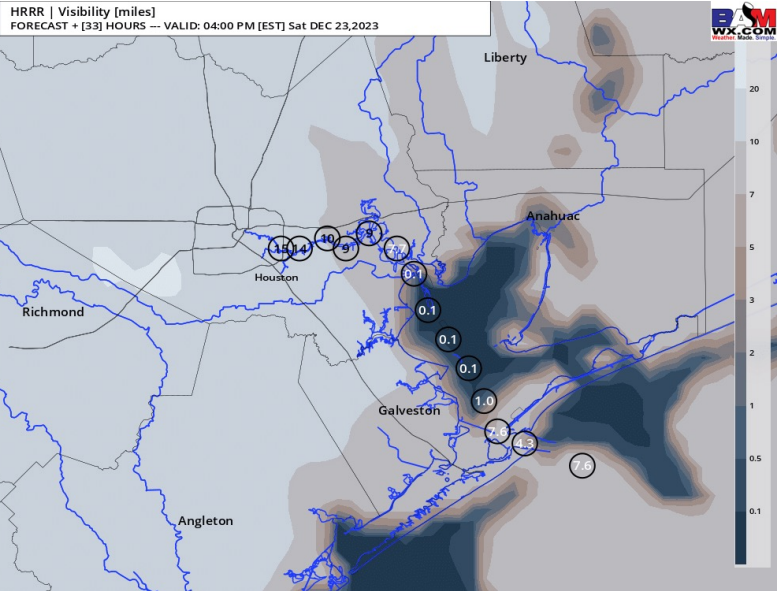
- As we head into the early afternoon, any type of fog threat is expected to remain isolated. Assessment of cameras/ observations have already shown a diminished threat vs this AM.
- After 5 - 6 PM, the threat for fog will be on the increase, likely for stations just south of Morgan's Point where waters are cooler.
- The threat will continue to increase into the evening and by 10 PM tonight, fog will be possible for any one location, with the greatest potential likely to set up north of the Boarding station where waters are slightly cooler.
- Almost all data is now in agreement about fog forming tonight into tomorrow morning. Lowest confidence areas would be towards the boarding station. However, sea fog looks **LIKELY** tonight/ tomorrow AM.
- The greatest risk for Sea Fog will be from 10 PM tonight through 10 AM tomorrow. Thereafter, fog threat likely becomes more broken up. However, the risk for patchy sea fog remains into tomorrow afternoon.

Houston Pilots Visibility Report



3 PM CT SAT VISIBILITY 2 AM CT SUN VISIBILITY

Confidence



TIMEFRAME DISCUSSED	THREAT
12 PM SAT- 12 PM SUN	MED

- Patchy fog sea fog will be possible into SAT afternoon, continuing from the morning.
- Once again, the best potential will be north of the Boarding Station where waters are cooler.
- Confidence is slightly lower into tomorrow afternoon, as it can sometimes be difficult for widespread threats to linger into the afternoon.
- Bouts of sea fog will be possible into the evening as well. However, the great complicating factor is the onset of heavy rain/ storms, which can scour away fog. Onset of storms / heavier rain looks to be around 7 - 9 PM on SAT. As these settle in, sea fog will become less of a threat.
- Uncertainty is high on additional threats for sea fog heading into late SAT night into SUN AM. The threat will continue to exist in behind the heaviest of rain. However, additional rounds of sea fog will continue to remain possible from roughly 12 AM SAT though roughly 10 AM SUN AM. Additional rounds of fog will be possible into SUN PM, once again in a broken fashion.

Houston Pilots Forecast Package



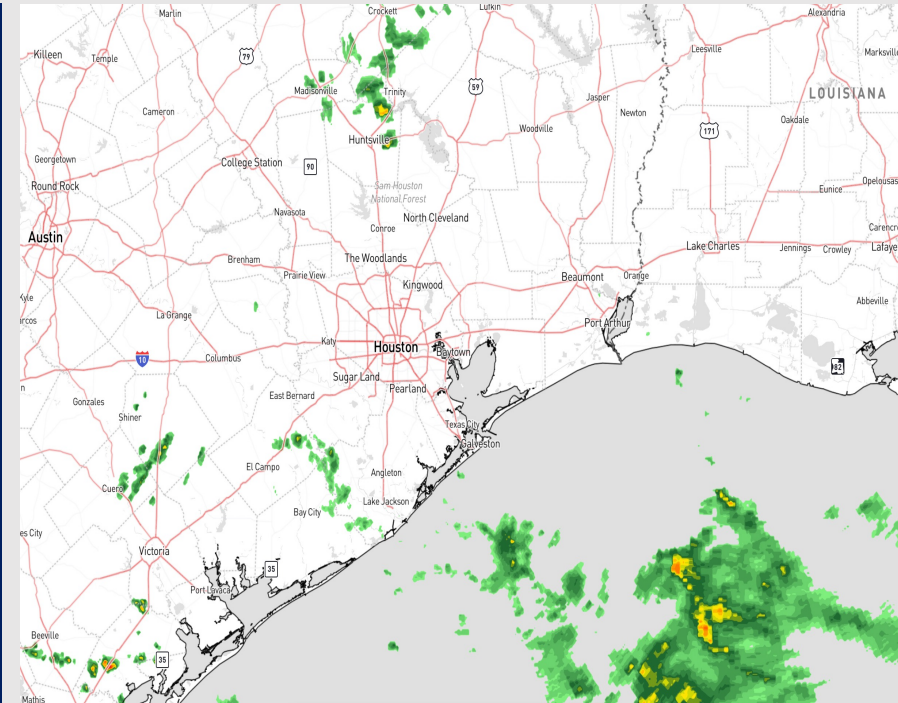
Updated: 12:30 PM CT

Friday, December 22, 2023

Forecaster: Matt Griffin

Weather Headlines

- Check the slides above for information about fog through today into SUN AM.
- Winds do not look to be overly problematic the next few days aside from briefly stronger winds late Saturday into SUN AM.
- Active weather is anticipated from SAT PM into early SUN AM.
- Elevated northerly winds will be possible MON/TUE after the passage of the cold front, especially towards the boarding station.



Radar/NWS Alerts: 12:30 PM CT



As always, please do not hesitate to reach out to us with any forecast questions via the chat option on the Weather Porthole or our on-call number, **(317)-560-8122** press 1 for forecast questions.

Houston Pilots Extended Range Visibility Report



Monday 12/25/23

Pending on how much rain falls, some pockets of fog cannot be fully ruled out despite a shift to more northerly winds. Threat on Monday is not as great as SAT/SUN.



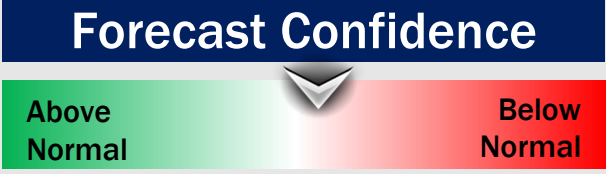
Wednesday 12/27/23

NW/N winds will continue to limit fog potential throughout the day Wednesday.



Tuesday 12/26/23

A shift back to winds from the NW/N will limit fog potential throughout the day Tuesday.



Chance for Fog

Monday AM	Possible
Monday PM	Unlikely
Tuesday AM	Unlikely
Tuesday PM	Unlikely
Wednesday AM	Unlikely
Wednesday PM	Unlikely

Houston Pilots Visibility Chart (miles)



Forecast Confidence



Time	Thu 7pm	Thu 8pm	Thu 9pm	Thu 10pm	Thu 11pm	Fri 12am	Fri 1am	Fri 2am	Fri 3am	Fri 4am	Fri 5am	Fri 6am	Fri 7am	Fri 8am	Fri 9am	Fri 10am	Fri 11am	Fri 12pm	Fri 1pm	Fri 2pm	Fri 3pm	Fri 4pm	Fri 5pm	Fri 6pm	Fri 7pm	Fri 8pm	Fri 9pm	Fri 10pm	Fri 11pm	Sat 12am	Sat 1am	Sat 2am	Sat 3am	Sat 4am	Sat 5am	Sat 6am	
610 Bridge	10	10	10	10	10	8	7	6	6	4	3	3	4	3	5	7	10	10	10	9	7	6	6	5	5	4	4	3	3	3	2	2	2	2	3	2	
Kinder 1	10	10	10	10	9	8	6	6	6	4	3	3	4	3	5	7	10	10	10	9	7	7	6	5	5	4	4	3	3	3	2	2	2	2	2	3	2
Greens Bayou	10	10	10	10	9	9	7	6	5	4	3	3	4	3	5	7	10	10	10	10	8	7	6	6	5	4	4	3	3	4	3	2	2	2	2	3	2
Shell Crude	10	10	10	10	8	8	6	6	5	5	4	4	5	4	5	7	10	10	10	9	9	8	7	5	5	4	4	3	3	4	2	2	2	2	2	3	2
Lynchburg Ferries	10	10	10	10	9	9	7	6	5	5	4	4	5	4	5	7	10	10	10	10	9	9	7	6	5	4	4	3	4	4	3	2	2	2	2	3	2
Exxon 3	10	9	10	9	9	8	6	6	6	6	5	5	5	4	5	7	10	10	10	8	9	9	7	5	5	4	4	3	5	4	2	2	2	2	2	3	2
Morgans Point	9	9	9	9	8	8	6	6	6	6	6	5	5	4	5	6	9	10	10	10	10	9	9	7	6	5	4	5	7	5	2	2	2	2	2	3	2
75/76	8	9	7	8	8	8	6	7	6	6	6	6	6	5	6	6	9	10	10	10	10	9	9	7	6	4	4	5	7	5	2	2	3	3	3	3	3
63/64	9	9	7	8	8	8	7	7	6	6	6	6	6	5	6	6	9	10	10	10	10	9	9	6	5	5	5	6	6	4	3	3	3	3	3	3	3
51/52	9	9	9	8	8	8	7	7	7	7	6	6	6	5	6	8	9	10	10	10	10	9	7	5	4	4	4	6	5	3	3	3	3	3	3	3	3
37/38	10	10	9	10	9	8	8	9	9	9	7	7	7	6	6	8	9	10	9	8	8	6	6	4	4	4	3	4	4	3	3	3	3	3	3	3	3
25/26	10	10	9	10	10	10	8	10	9	9	8	7	7	6	6	8	9	10	9	8	6	4	4	4	4	4	3	3	4	3	3	3	3	3	3	3	4
11/12	10	10	10	10	10	10	10	10	10	10	9	9	7	6	6	7	9	10	9	8	5	5	4	4	4	4	3	6	6	5	4	3	3	3	3	4	4
1 & 2 Bravo	10	10	10	10	10	10	10	10	10	10	9	9	7	6	7	7	7	7	7	6	4	4	3	3	5	6	6	7	7	7	7	6	3	5	7	8	

NOTE: This is automated data that may/may not agree with the official BAM thinking that's found on the daily slides or special visibility report slides. This data should be used as a guide only

Houston Pilots Wind Chart



Forecast Confidence



Example

Sustained wind 13 Knots
Gusts 18 Knots
Wind from the N

WS: 13
G:18
N

Time Knots	Thu 8pm	Thu 9pm	Thu 10pm	Thu 11pm	Fri 12am	Fri 1am	Fri 2am	Fri 3am	Fri 4am	Fri 5am	Fri 6am	Fri 7am	Fri 8am	Fri 9am	Fri 10am	Fri 11am	Fri 12pm	Fri 1pm	Fri 2pm	Fri 3pm	Fri 4pm	Fri 5pm	Fri 6pm	Fri 7pm	Fri 8pm	Fri 9pm	Fri 10pm	Fri 11pm	Sat 12am	Sat 1am	Sat 2am	Sat 3am	Sat 4am	Sat 5am	Sat 6am	Sat 7am					
610 Bridge	4	4	3	3	2	2	3	2	3	3	3	3	3	5	5	6	5	5	6	6	6	6	5	5	5	4	4	4	4	4	4	4	4	4	4	4	4	4			
	14	12	11	8	6	6	7	7	8	9	9	8	9	12	9	8	8	8	9	9	9	9	8	8	7	7	7	6	7	6	6	6	6	6	6	6	7	7			
	E	ESE	ESE	ESE	E	ENE	ESE	E	E	ESE	ESE	E	ESE	ESE	SE	ESE	ESE	ESE	SE	SE	ESE	ESE	SE	ESE	ESE	ESE	ESE	ESE	ESE	ESE	ESE	ESE	ESE	ESE	ESE	ESE	ESE	ESE			
Kinder 1	4	4	3	3	2	2	3	2	3	3	3	3	3	5	5	6	5	5	6	6	6	6	5	5	4	4	4	4	4	4	4	4	4	4	4	4	4	4	4		
	15	12	11	8	6	6	7	8	9	9	9	8	9	12	9	8	8	8	9	9	9	9	8	8	7	7	7	6	7	6	6	6	6	6	6	6	6	7	7		
	ESE	ESE	ESE	ESE	E	ENE	ESE	ESE	E	ESE	ESE	E	ESE	ESE	SE	ESE	ESE	ESE	SE	SE	ESE	ESE	SE	ESE	ESE	ESE	ESE	ESE	ESE	ESE	ESE	ESE	ESE	ESE	ESE	ESE	ESE	ESE			
Greens Bayou	4	3	3	2	2	2	2	3	3	3	2	3	5	6	6	6	6	6	6	6	6	6	5	5	4	4	4	4	4	4	4	4	4	4	4	4	4	4	4		
	14	11	9	8	6	6	7	8	9	9	9	8	8	13	10	8	8	8	9	9	9	9	8	7	7	6	6	6	6	6	6	6	6	6	6	6	6	6	7	7	
	ESE	ESE	E	ESE	E	ENE	ESE	ESE	ESE	ESE	ESE	E	E	ESE	SE	ESE	ESE	SE	SE	SE	SE	SE	SE	SE	ESE	ESE	ESE	ESE	ESE	ESE	ESE	ESE	ESE	ESE	ESE	ESE	ESE	ESE	ESE		
Shell Crude	4	3	3	2	2	2	2	3	3	4	3	3	3	5	6	6	6	6	6	6	7	6	6	5	5	4	4	4	4	4	4	4	4	4	4	4	4	4	4	5	
	15	11	9	8	6	6	7	8	9	10	9	8	8	13	10	9	8	8	9	10	9	8	8	7	7	6	6	6	6	6	6	6	6	6	6	6	6	6	7	7	
	ESE	ESE	E	ESE	ESE	ENE	ESE	ESE	ESE	ESE	ESE	E	E	ESE	SE	ESE	ESE	SE	SE	SE	SE	SE	SE	SE	ESE	ESE	ESE	ESE	ESE	ESE	ESE	ESE	ESE	ESE	ESE	ESE	ESE	ESE	ESE		
Lynchburg Ferries	4	2	2	2	1	2	3	2	3	4	3	2	3	5	6	6	6	6	6	6	7	6	6	5	5	4	4	4	4	4	4	4	4	4	4	4	4	4	5		
	13	10	8	8	6	6	8	8	9	10	9	8	8	13	10	9	8	8	9	10	9	9	8	7	7	7	7	6	6	6	6	6	6	6	6	6	6	6	7	7	
	E	SE	E	ESE	SE	ENE	ESE	ESE	ESE	ESE	ESE	E	E	ESE	SE	SE	SE	SE	SE	SE	SE	SE	SE	SE	SE	ESE	ESE	ESE	ESE	ESE	ESE	ESE	ESE	ESE	ESE	ESE	ESE	ESE	ESE		
Exxon 3	4	1	3	2	1	2	3	2	3	4	3	3	3	6	6	6	6	6	6	7	7	7	7	6	5	5	5	5	5	5	5	5	5	5	5	5	5	5	5	5	
	13	9	8	8	6	6	8	9	9	10	9	9	8	12	11	9	8	9	10	10	10	9	8	8	7	7	7	7	6	6	6	6	6	6	6	6	6	6	7	8	
	E	ESE	E	E	SE	E	ESE	ESE	ESE	ESE	ESE	E	E	ESE	SE	ESE	ESE	SE	SE	SE	SE	SE	SE	ESE	ESE	ESE	ESE	ESE	ESE	ESE	ESE	ESE	ESE	ESE	ESE	ESE	ESE	ESE	ESE		
Morgans Point	4	2	3	3	2	3	4	3	4	5	5	4	4	6	5	7	6	7	7	8	8	8	7	7	6	6	6	6	6	6	6	6	6	6	6	6	6	6	6	7	
	13	8	9	9	6	7	9	10	10	10	10	10	10	13	12	9	9	10	10	10	10	10	10	9	8	8	7	7	7	7	7	7	7	7	7	7	7	8	8		
	ENE	E	ENE	E	ENE	ENE	ESE	E	ESE	ESE	ESE	E	E	ESE	ESE	ESE	ESE	SE	SE	SE	SE	SE	SE	ESE	ESE	ESE	ESE	ESE	ESE	ESE	ESE	ESE	ESE	ESE	ESE	ESE	ESE	ESE	ESE		
75/76	4	2	4	3	3	4	5	5	5	6	7	6	6	5	4	7	7	7	8	9	9	9	9	8	8	7	7	7	7	7	7	7	7	7	7	7	7	7	8		
	13	9	9	10	8	8	10	11	11	12	12	12	11	13	12	10	11	11	11	11	11	11	11	10	9	9	8	8	8	8	8	8	8	8	8	8	8	8	8	9	10
	NE	NE	ENE	E	NE	ENE	E	ESE	E	ESE	ESE	ESE	ESE	E	E	ESE	ESE	ESE	SE	ESE	ESE	ESE	ESE	ESE	ESE	ESE	ESE	ESE	ESE	ESE	ESE	ESE	ESE	ESE	ESE	ESE	ESE	ESE	ESE		
63/64	5	3	4	4	4	5	6	7	7	8	7	7	6	5	8	7	7	8	9	9	9	9	9	8	8	7	7	7	7	7	7	7	7	7	7	7	7	7	8		
	13	9	10	10	9	10	10	12	12	13	13	12	12	12	12	10	11	11	11	11	11	11	11	10	9	8	8	8	8	8	8	8	8	8	8	8	8	8	8	9	
	NE	ENE	ENE	E	ENE	E	ESE	E	ESE	ESE	ESE	ESE	E	E	ESE	ESE	ESE	ESE	SE	ESE	ESE	ESE	ESE	ESE	ESE	ESE	ESE	ESE	ESE	ESE	ESE	ESE	ESE	ESE	ESE	ESE	ESE	ESE	ESE		
51/52	7	5	6	5	5	6	8	7	7	8	8	7	7	7	8	8	8	8	8	8	8	8	9	9	8	7	6	6	6	6	6	6	6	6	6	6	6	6	6	7	
	13	11	12	11	11	10	11	13	12	13	13	13	12	12	12	11	11	11	11	11	11	11	10	10	9	8	7	7	7	7	7	7	7	7	7	7	7	7	8		
	E	E	E	E	ESE	E	ESE	E	ESE	ESE	ESE	ESE	E	E	ESE	ESE	ESE	ESE	ESE	ESE	ESE	ESE	ESE	ESE	ESE	ESE	ESE	ESE	ESE	ESE	ESE	ESE	ESE	ESE	ESE	ESE	ESE	ESE	ESE		
37/38	7	5	7	6	6	5	6	7	6	7	8	7	7	7	7	9	8	8	8	8	8	8	9	9	8	7	6	6	6	6	6	6	6	6	6	6	6	6	7		
	12	12	13	12	12	10	12	12	12	12	13	12	12	12	11	11	11	11	11	11	11	11	10	10	9	8	7	7	7	7	7	7	7	7	7	7	7	7	8		
	E	E	ESE	ESE	ESE	E	ESE	ESE	E	E	ESE	ESE	ESE	E	ESE	ESE	ESE	ESE	ESE	ESE	ESE	ESE	ESE	ESE	ESE	ESE	ESE	ESE	ESE	ESE	ESE	ESE	ESE	ESE	ESE	ESE	ESE	ESE	ESE		
25/26	6	6	8	7	6	5	6	6	6	7	7	7	6	7	7	9	8	8	8	8	8	8	8	7	7	6	5	6	6	6	6	6	6	6	6	6	6	6	6	7	
	12	14	14	13	13	11	12	12	12	12	13	12	11	12	10	11	11	10	10	10	10	9	9	8	7	7	7	7	7	7	7	7	7	7	7	7	7	7	7	8	
	E	ESE	ESE	ESE	ESE	ESE	ESE	ESE	E	E	ESE	ESE	ESE	E	E	ESE	ESE	ESE	ESE	ESE	ESE	ESE	ESE	ESE	ESE	ESE	ESE	ESE	ESE	ESE	ESE	ESE	ESE	ESE	ESE	ESE	ESE	ESE	ESE	ESE	
11/12	6	10	10	8	8	6	7	7	7	8	8	7	6	7	7	9	8	8	8	8	8	8	8	7	7	6	6	6	6	6	6	6	6	6	6	6	6	6	6	7	
	14	17	16	14	14	12	12	13	13	13	13	13	12	12	11	11	11	10	10	10	10	9	9	8	8	7	6	6	6	6	6	6	6	6	6	6	6	6	6	7	
	E	ESE	ESE	ESE	ESE	ESE	ESE	ESE	ESE	E	ESE	ESE	ESE	ESE	E	E	E	E	E	E	E	E	E	E	E	E	E	E	E	E	E	E	E	E	E	E	E	E	E	E	
1 & 2 Bravo	13	13	12	11	10	8	8	10	10	9	10	10	9	8	7	9	9	8	8	8	8	8	9	9	8	8	8	8	8	8	8	8	8	8	8	8	8	8	8	9	
	20	20	19	17	14	12	13	14	14	14	14	14	14	14	13	11	11	10	10	10	10	10	10	10	9	9	9	9	9	9	9	9	9	9	9	9	9	9	10		
	ESE	ESE	ESE	ESE	ESE	ESE	ESE	ESE	ESE	E	ESE	ESE	ESE	ESE	E	E	E	E	E	E	E	E	E	E	E	E	E	E	E	E	E	E	E	E	E	E	E	E	E		

NOTE: This is automated data that may/may not agree with the official BAM thinking that's found on the daily slides or special visibility report slides. This data should be used as a guide only

Houston Pilots: Friday. 12/22/2023



Forecast Discussion

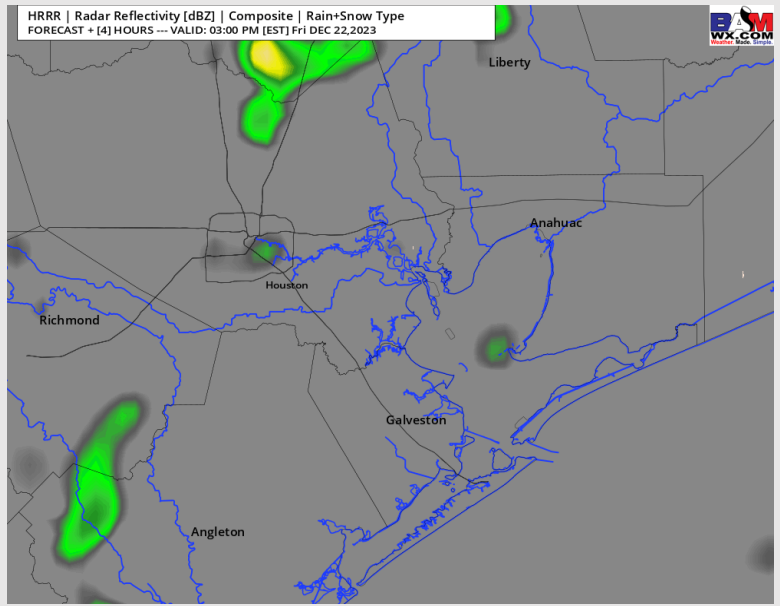
Precip: Data has really backed off on chances today with about 20% chances through 8 PM – 10 PM. Plenty of dry time is likely.

Wind: SE winds will turn ESE/ E by 8 PM tonight. **N Morgan's Point:** 3 - 7 kts for the remainder of the day. **S of Morgan's Point:** Winds will steadily decline though the evening becoming sustained around 3 – 8 MPH by 8 PM where they will remain for the night.

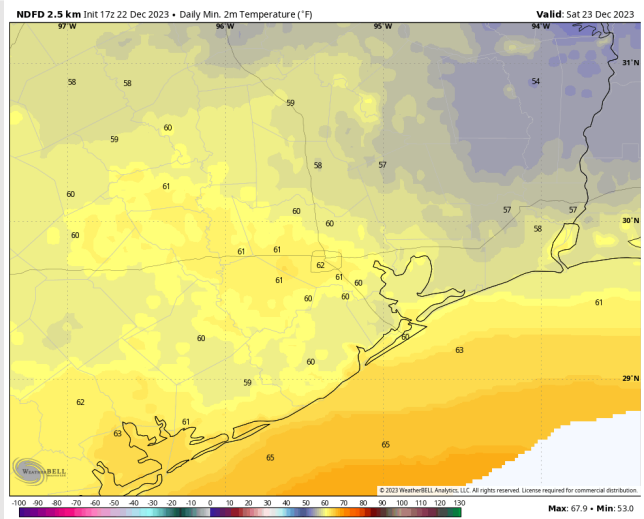
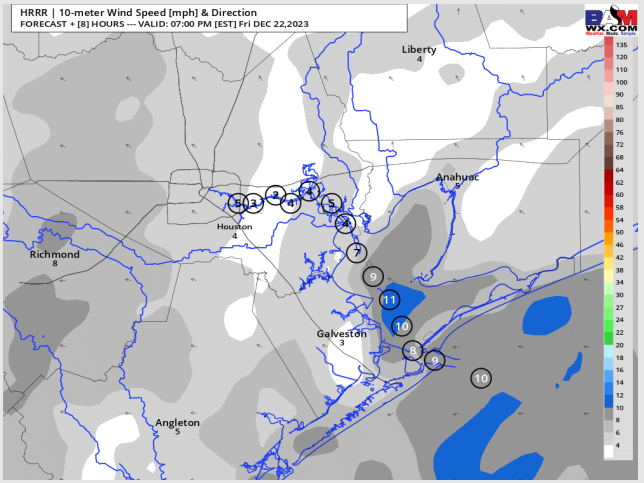
Low Temps: Near 60 F

Visibility: More information about lower visibilities tonight into tomorrow AM on the first slide of report today into SAT AM.

Precip Image: 4 PM CT



Wind Speed:
6 PM CT



Low Temps
SAT

Houston Pilots: sat. 12/23/2023



Forecast Discussion

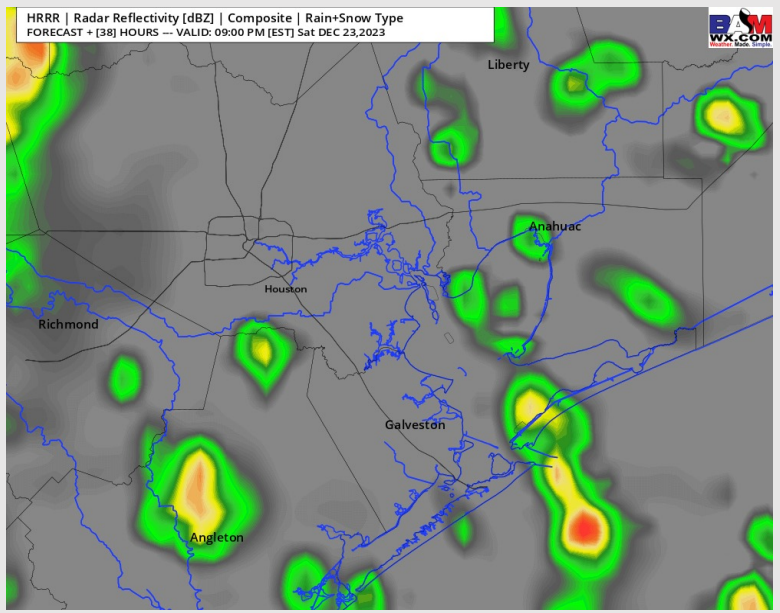
Precip: 3 AM – 2 PM offers up spotty shower potential around 20%. Chances will increase slightly to 30% through 6 PM. Rain/ storms are expected to fill in thereafter with likely rain beyond 8 PM.

Wind: Winds start to shift more out of the SE in the AM where they remain for the day.
N of Morgan's Point: Winds will start out at 3 – 7 knots becoming 4 – 9 knots in the afternoon.
S of Morgan's Point: Winds will steadily pick up through the morning becoming sustained around 7 – 12 knots by 9 am where they will generally remain until roughly 5 – 6 PM where winds can pick up to 12 – 15 knots sustained. **Stronger wind gusts cannot be ruled out under storms. Winds gusts of 20 – 25 kts will be possible after 5PM.**

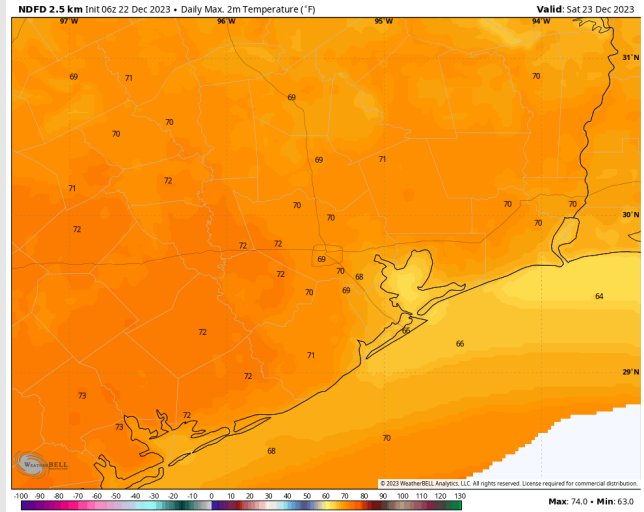
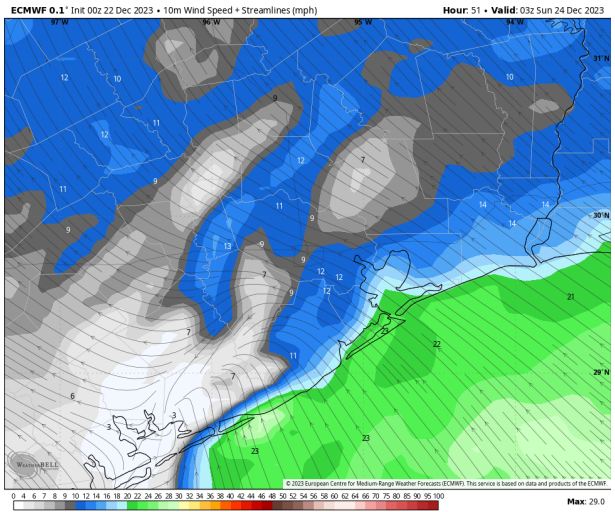
High Temps: **N of Morgan's Point:** Low 70's F. **S of Morgan's Point:** Mid 60's F.

Visibility: More information about sea fog SAT PM into SUN AM on the second slide of report.

Precip Image: 8 PM CT



Wind Speed:
9 PM CT



High Temps
Saturday

Houston Pilots: Sun. 12/24/2023



Forecast Discussion

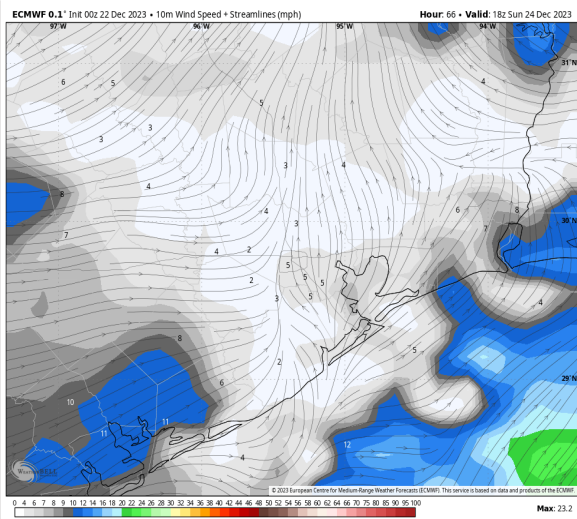
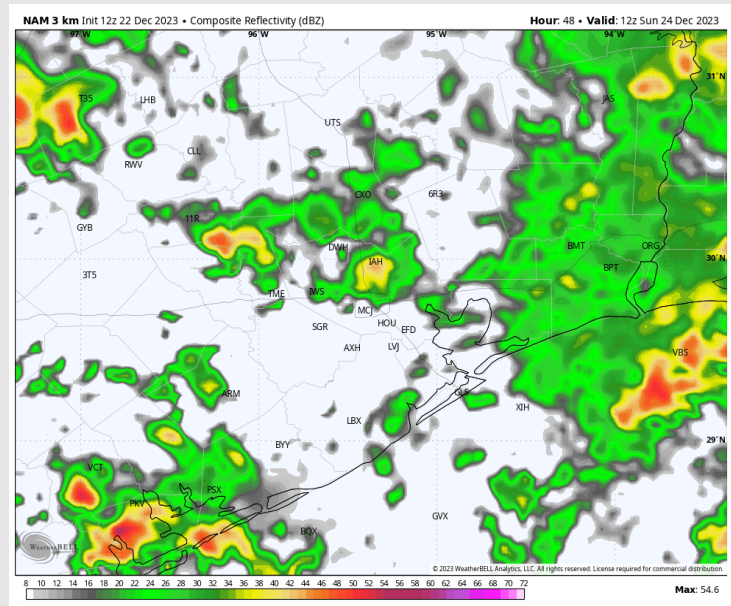
Precip: Scattered showers/ storms will be possible SUN AM before chances become more isolated into the PM. Chances roughly end by 6 PM.

Wind: SE winds in the AM shift from the SW in the afternoon and will slowly swing out of the NW into MON AM. **N of Morgan's Point:** Winds at 8-13 kts will calm to 3-8 kts by 4 PM and remain there for the rest of the day. **S of Morgan's Point:** Winds will increase into SUN AM to around 13-17 kts will calm to 4-9 kts by 4 PM, remaining at that clip for the rest of the day. **Winds gusts of 20 - 25 kts will be possible before 6 AM for stations S of Morgan's Point.**

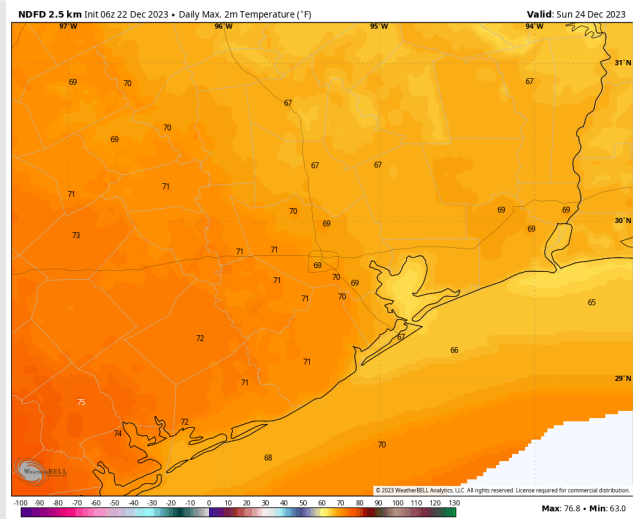
High Temps: **N of Morgan's Point:** Low 70's F. **S of Morgan's Point:** Mid 60's F.

Visibility: More information about fog SUN AM on the 2nd slide of the report. Additional bouts of fog will be possible into SUN afternoon with an increased threat into the evening/ MON AM. Storms will be the great complicating factor in this. Overall low confidence on precise details at this distance.

Precip Image: 6 AM CT

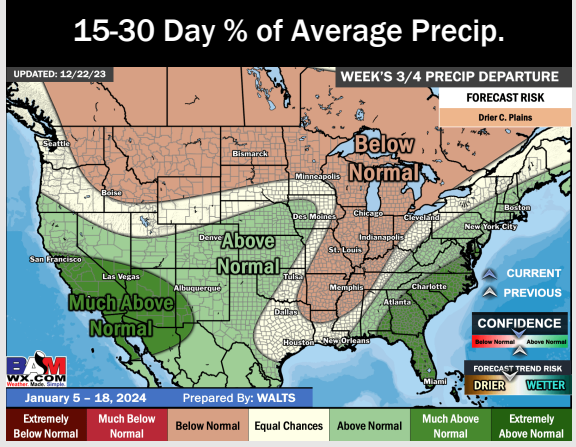
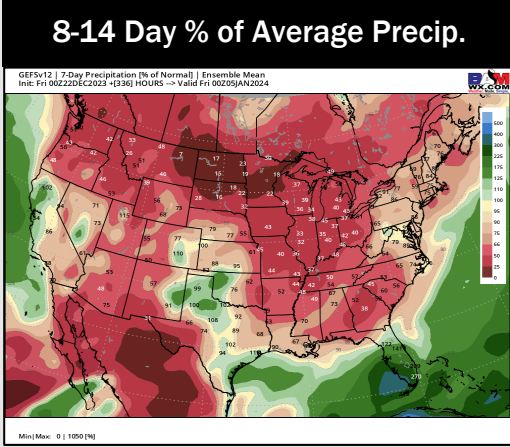
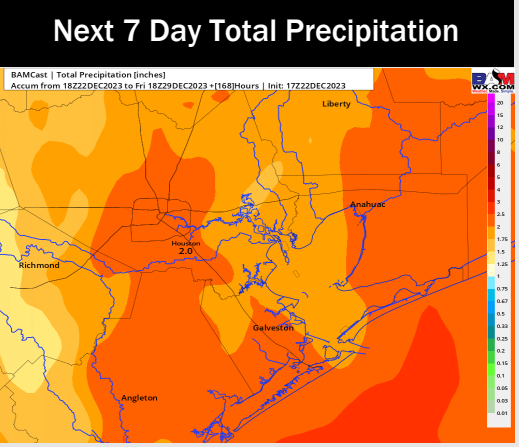
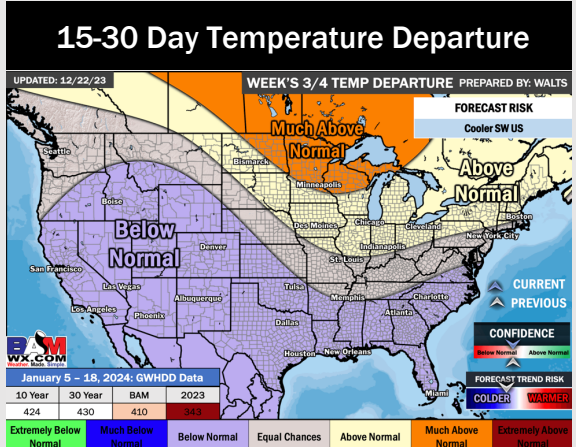
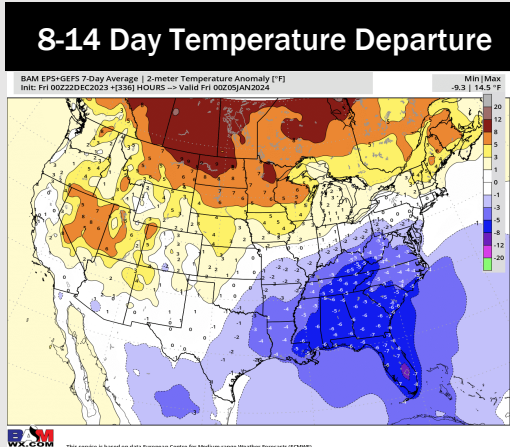
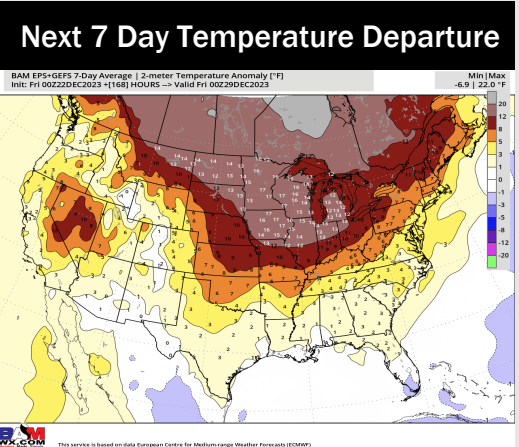


Wind Speed:
12 PM CT



High Temps
Sunday

Houston Pilots: 12/22/23



- SAT evening through SUN PM will offer up widespread, and at times heavy, rainfall opportunities. Above normal temperatures are expected until colder air fill behind a cold front after Monday.
- Cooler temperatures and above normal moisture chances are at play for the week 2 timeframe.
- Below normal temperatures and near normal chances for precipitation are favored in the weeks 3/4 timeframe. There is a risk this can trend wetter given an active subtropical jet.