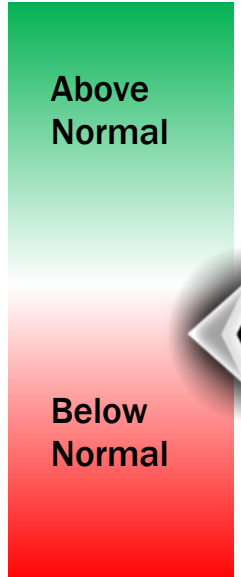
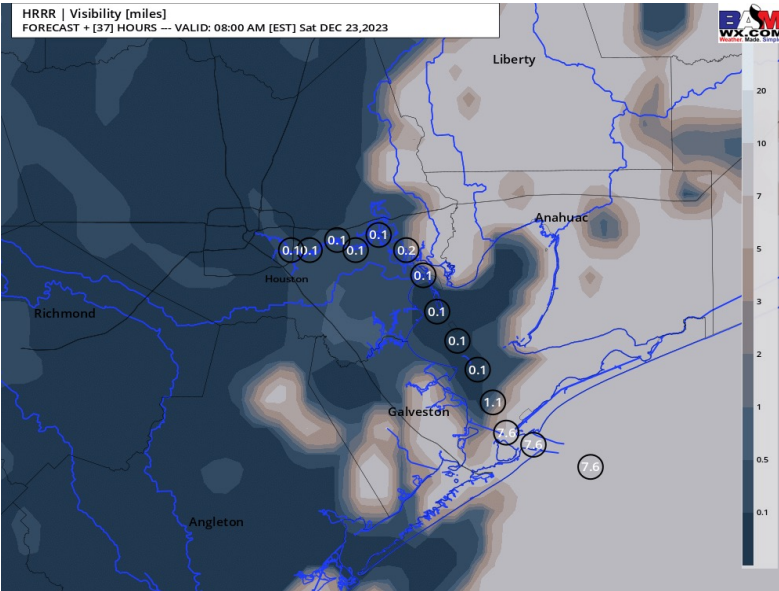
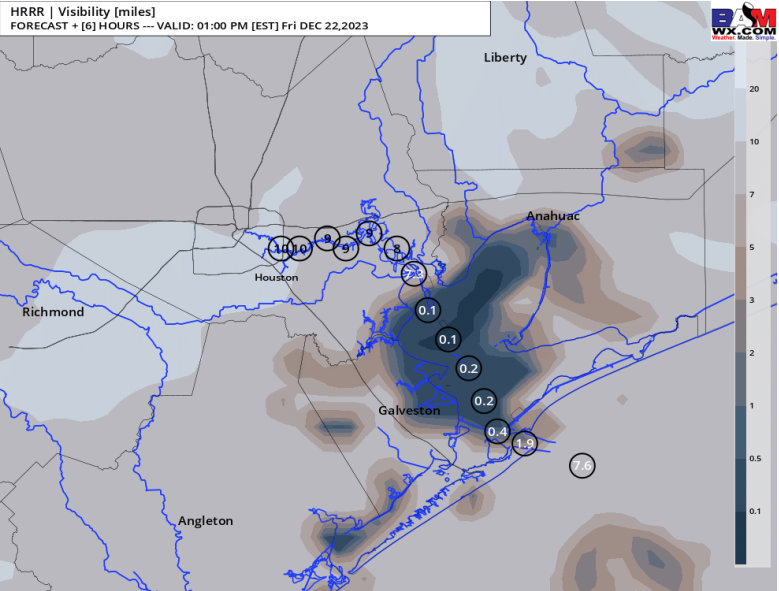


Houston Pilots Visibility Report



12 PM CT FRI VISIBILITY 2 AM CT SAT VISIBILITY

Confidence



TIMEFRAME DISCUSSED	THREAT
NOW- 12 PM SAT	MED

- We are starting to notice some visibilities lower near the HOU area.
- With this being said, patchy instances of fog will be possible this morning, especially for, but not limited to, stations north of the Boarding Station. At times this can be dense, with visibilities dropped below 1 mile.
- We need to continue to watch for patchy dense fog development this afternoon. Once again, the greatest fog threat is for locations north of the boarding station.
- Coverage can start to increase after 8 - 10 PM tonight and will be more of a risk for ALL stations into the morning hours of Saturday. However, current thinking is the best potential for fog will be north of the boarding station where waters are cooler.
- Dense Fog risk will continue through the AM but can become increasingly broken up into the afternoon of Saturday. **Best risk timeframe for sea fog is 10 PM tonight to 10 AM SAT.** More details on additional fog threats into SAT PM in additional updates.

Houston Pilots Forecast Package



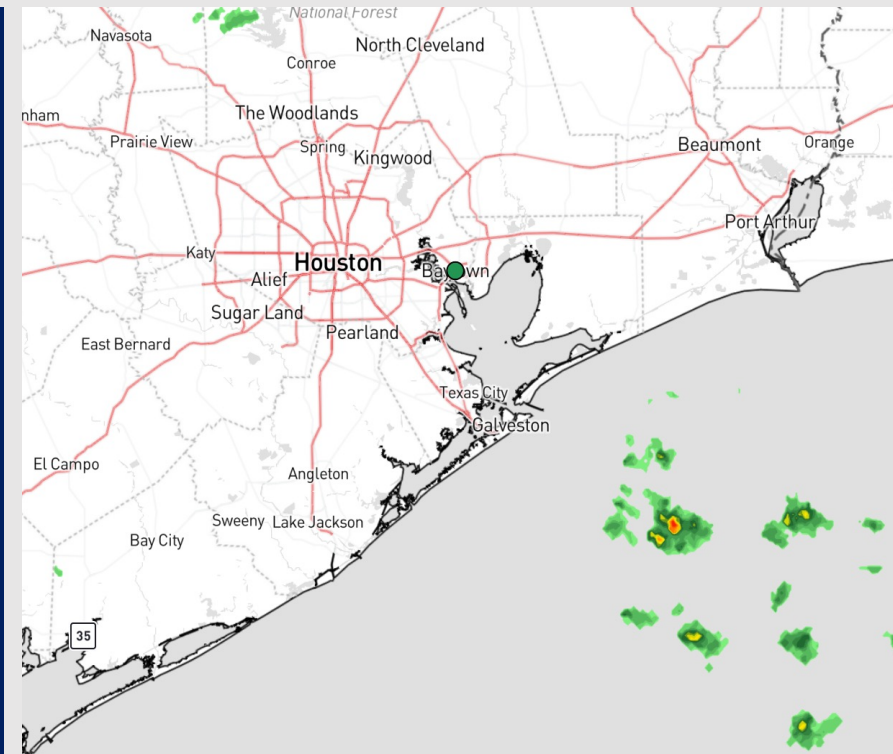
Updated: 7:40 AM CT

Friday, December 22, 2023

Forecaster: Matt Griffin

Weather Headlines

- Check the slide above for information about fog through today into SAT AM.
- Additional sea fog will be possible into SAT PM/ SUN AM
- Winds do not look to be overly problematic the next few days aside from briefly stronger winds late Saturday. Would need to watch SUN for elevated winds as a front approaches the area.
- Active weather is anticipated from SAT PM into SUN PM.



Radar/NWS Alerts: 1:10 AM CT



As always, please do not hesitate to reach out to us with any forecast questions via the chat option on the Weather Porthole or our on-call number, **(317)-560-8122** press 1 for forecast questions.

Houston Pilots Extended Range Visibility Report



Monday 12/25/23

Pending on how much rain falls, some pockets of fog cannot be fully ruled out despite a shift to more northerly winds. Threat on Monday is not as great as SAT/SUN.



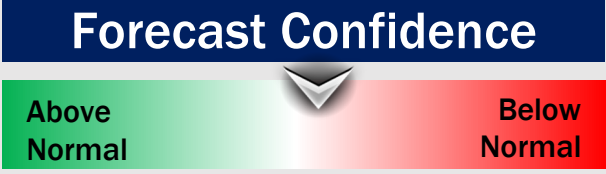
Wednesday 12/27/23

NW/N winds will continue to limit fog potential throughout the day Wednesday.



Tuesday 12/26/23

A shift back to winds from the NW/N will limit fog potential throughout the day Tuesday.



Chance for Fog

Monday AM	Possible
Monday PM	Unlikely
Tuesday AM	Unlikely
Tuesday PM	Unlikely
Wednesday AM	Unlikely
Wednesday PM	Unlikely

Houston Pilots Visibility Chart (miles)



Forecast Confidence



Time	Thu 7pm	Thu 8pm	Thu 9pm	Thu 10pm	Thu 11pm	Fri 12am	Fri 1am	Fri 2am	Fri 3am	Fri 4am	Fri 5am	Fri 6am	Fri 7am	Fri 8am	Fri 9am	Fri 10am	Fri 11am	Fri 12pm	Fri 1pm	Fri 2pm	Fri 3pm	Fri 4pm	Fri 5pm	Fri 6pm	Fri 7pm	Fri 8pm	Fri 9pm	Fri 10pm	Fri 11pm	Sat 12am	Sat 1am	Sat 2am	Sat 3am	Sat 4am	Sat 5am	Sat 6am		
610 Bridge	10	10	10	10	10	8	7	6	6	4	3	3	4	3	5	7	10	10	10	9	7	6	6	5	5	4	4	3	3	3	2	2	2	2	3	2		
Kinder 1	10	10	10	10	9	8	6	6	6	4	3	3	4	3	5	7	10	10	10	9	7	7	6	5	5	4	4	3	3	3	2	2	2	2	2	3	2	
Greens Bayou	10	10	10	10	9	9	7	6	5	4	3	3	4	3	5	7	10	10	10	10	8	7	6	6	5	4	4	3	3	4	3	2	2	2	2	3	2	
Shell Crude	10	10	10	10	8	8	6	6	5	5	4	4	5	4	5	7	10	10	10	9	9	8	7	5	5	4	4	3	3	4	2	2	2	2	2	3	2	
Lynchburg Ferries	10	10	10	10	9	9	7	6	5	5	4	4	5	4	5	7	10	10	10	10	9	9	7	6	5	4	4	3	4	4	3	2	2	2	2	3	2	
Exxon 3	10	9	10	9	9	8	6	6	6	6	5	5	5	4	5	7	10	10	10	8	9	9	7	5	5	4	4	3	5	4	2	2	2	2	2	3	2	
Morgans Point	9	9	9	9	8	8	6	6	6	6	6	5	5	4	5	6	9	10	10	10	10	9	9	7	6	5	4	5	7	5	2	2	2	2	2	3	2	
75/76	8	9	7	8	8	8	6	7	6	6	6	6	6	5	6	6	9	10	10	10	10	9	9	7	6	4	4	5	7	5	2	2	3	3	3	3	3	
63/64	9	9	7	8	8	8	7	7	6	6	6	6	6	5	6	6	9	10	10	10	10	9	9	6	5	5	5	6	6	4	3	3	3	3	3	3	3	
51/52	9	9	9	8	8	8	7	7	7	7	6	6	6	5	6	8	9	10	10	10	10	9	7	5	4	4	4	6	5	3	3	3	3	3	3	3	3	
37/38	10	10	9	10	9	8	8	9	9	9	7	7	7	6	6	8	9	10	9	8	8	6	6	4	4	4	3	4	4	3	3	3	3	3	3	3	3	3
25/26	10	10	9	10	10	10	8	10	9	9	8	7	7	6	6	8	9	10	9	8	6	4	4	4	4	4	4	3	3	4	3	3	3	3	3	3	3	4
11/12	10	10	10	10	10	10	10	10	10	10	9	9	7	6	6	7	9	10	9	8	5	5	4	4	4	4	4	3	6	6	5	4	3	3	3	3	4	4
1 & 2 Bravo	10	10	10	10	10	10	10	10	10	10	9	9	7	6	7	7	7	7	7	6	4	4	3	3	5	6	6	7	7	7	7	6	3	5	7	8	8	

NOTE: This is automated data that may/may not agree with the official BAM thinking that's found on the daily slides or special visibility report slides. This data should be used as a guide only

Houston Pilots Wind Chart



Forecast Confidence



Example

Sustained wind 13 Knots
Gusts 18 Knots
Wind from the N

WS: 13
G:18
N

Time Knots	Thu 8pm	Thu 9pm	Thu 10pm	Thu 11pm	Fri 12am	Fri 1am	Fri 2am	Fri 3am	Fri 4am	Fri 5am	Fri 6am	Fri 7am	Fri 8am	Fri 9am	Fri 10am	Fri 11am	Fri 12pm	Fri 1pm	Fri 2pm	Fri 3pm	Fri 4pm	Fri 5pm	Fri 6pm	Fri 7pm	Fri 8pm	Fri 9pm	Fri 10pm	Fri 11pm	Sat 12am	Sat 1am	Sat 2am	Sat 3am	Sat 4am	Sat 5am	Sat 6am	Sat 7am				
610 Bridge	4	4	3	3	2	2	3	2	3	3	3	3	3	5	5	6	5	5	6	6	6	6	5	5	5	4	4	4	4	4	4	4	4	4	4	4	4	4		
	14	12	11	8	6	6	7	7	8	9	9	8	9	12	9	8	8	8	9	9	9	9	8	8	7	7	7	6	7	6	6	6	6	6	6	6	7	7		
	E	ESE	ESE	ESE	E	ENE	ESE	E	E	ESE	ESE	E	ESE	ESE	SE	ESE	ESE	ESE	ESE	SE	ESE	ESE	SE	ESE	ESE	ESE	ESE	ESE	ESE	ESE	ESE	ESE	ESE	ESE	ESE	ESE	ESE	ESE		
Kinder 1	4	4	3	3	2	2	3	2	3	3	3	3	3	5	5	6	5	5	6	6	6	6	5	5	4	4	4	4	4	4	4	4	4	4	4	4	4	4	4	
	15	12	11	8	6	6	7	8	9	9	9	8	9	12	9	8	8	8	9	9	9	9	8	8	7	7	7	6	7	6	6	6	6	6	6	6	6	7	7	
	ESE	ESE	ESE	ESE	E	ENE	ESE	ESE	E	ESE	ESE	E	ESE	ESE	SE	ESE	ESE	ESE	SE	ESE	SE	ESE	SE	ESE	ESE	ESE	ESE	ESE	ESE	ESE	ESE	ESE	ESE	ESE	ESE	ESE	ESE	ESE		
Greens Bayou	4	3	3	2	2	2	2	3	3	3	2	3	5	6	6	6	6	6	6	6	6	6	5	5	4	4	4	4	4	4	4	4	4	4	4	4	4	4	4	
	14	11	9	8	6	6	7	8	9	9	9	8	8	13	10	8	8	8	9	9	9	9	8	7	7	6	6	6	6	6	6	6	6	6	6	6	6	6	7	7
	ESE	ESE	E	ESE	E	ENE	ESE	ESE	ESE	ESE	ESE	E	E	ESE	SE	ESE	ESE	SE	SE	SE	SE	SE	SE	SE	ESE	ESE	ESE	ESE	ESE	ESE	ESE	ESE	ESE	ESE	ESE	ESE	ESE	ESE	ESE	
Shell Crude	4	3	3	2	2	2	2	3	3	4	3	3	3	5	6	6	6	6	6	6	6	6	5	5	4	4	4	4	4	4	4	4	4	4	4	4	4	4	4	5
	15	11	9	8	6	6	7	8	9	10	9	8	8	13	10	9	8	8	9	10	9	8	8	7	7	6	6	6	6	6	6	6	6	6	6	6	6	6	7	7
	ESE	ESE	E	ESE	ESE	ESE	ESE	ESE	ESE	ESE	ESE	E	E	ESE	SE	ESE	ESE	SE	SE	SE	SE	SE	SE	SE	ESE	ESE	ESE	ESE	ESE	ESE	ESE	ESE	ESE	ESE	ESE	ESE	ESE	ESE	ESE	
Lynchburg Ferries	4	2	2	2	1	2	3	2	3	4	3	2	3	5	6	6	6	6	6	6	6	6	5	5	5	4	4	4	4	4	4	4	4	4	4	4	4	4	5	
	13	10	8	8	6	6	8	8	9	10	9	8	8	13	10	9	8	8	9	10	9	9	8	7	7	7	6	6	6	6	6	6	6	6	6	6	6	6	7	7
	E	SE	E	ESE	SE	ENE	ESE	ESE	ESE	ESE	ESE	E	E	ESE	SE	SE	SE	SE	SE	SE	SE	SE	SE	SE	ESE	ESE	ESE	ESE	ESE	ESE	ESE	ESE	ESE	ESE	ESE	ESE	ESE	ESE	ESE	
Exxon 3	4	1	3	2	1	2	3	2	3	4	3	3	3	6	6	6	6	6	6	6	6	6	5	5	5	5	5	5	5	5	5	5	5	5	5	5	5	5	5	5
	13	9	8	8	6	6	8	9	9	10	9	9	8	12	11	9	8	9	10	10	10	9	8	8	7	7	7	6	6	6	6	6	6	6	6	6	6	6	7	8
	E	ESE	E	E	SE	E	ESE	ESE	ESE	ESE	ESE	E	E	ESE	SE	ESE	ESE	SE	SE	SE	SE	SE	SE	ESE	ESE	ESE	ESE	ESE	ESE	ESE	ESE	ESE	ESE	ESE	ESE	ESE	ESE	ESE	ESE	
Morgans Point	4	2	3	3	2	3	4	3	4	5	5	4	4	6	5	7	6	7	7	8	8	8	8	7	7	6	6	6	6	6	6	6	6	6	6	6	6	6	6	7
	13	8	9	9	6	7	9	10	10	10	10	10	10	13	12	9	9	10	10	10	10	10	9	8	8	7	7	7	7	7	7	7	7	7	7	7	7	8	8	
	ENE	E	ENE	E	ENE	ENE	ESE	ESE	ESE	ESE	ESE	E	E	ESE	ESE	ESE	ESE	SE	SE	SE	SE	SE	SE	ESE	ESE	ESE	ESE	ESE	ESE	ESE	ESE	ESE	ESE	ESE	ESE	ESE	ESE	ESE	ESE	
75/76	4	2	4	3	3	4	5	5	5	6	7	6	6	5	4	7	7	7	8	9	9	9	9	8	8	7	7	7	7	7	7	7	7	7	7	7	7	7	8	
	13	9	9	10	8	8	10	11	11	12	12	12	11	13	12	10	10	11	11	11	11	11	10	9	9	8	8	7	7	7	7	7	7	7	7	7	7	7	8	8
	NE	NE	ENE	E	NE	ENE	E	ESE	ESE	ESE	ESE	ESE	E	E	ESE	ESE	ESE	SE	ESE	ESE	ESE	ESE	ESE	ESE	ESE	ESE	ESE	ESE	ESE	ESE	ESE	ESE	ESE	ESE	ESE	ESE	ESE	ESE	ESE	
63/64	5	3	4	4	4	5	6	7	7	8	7	7	6	5	8	7	7	8	9	9	9	9	9	8	8	7	7	7	7	7	7	7	7	7	7	7	7	7	8	
	13	9	10	10	9	10	10	12	12	13	13	12	12	12	10	11	11	11	11	11	11	11	10	9	8	8	8	8	8	8	8	8	8	8	8	8	8	8	8	9
	NE	ENE	ENE	E	ENE	E	ESE	ESE	ESE	ESE	ESE	ESE	E	E	ESE	ESE	ESE	ESE	SE	ESE	ESE	ESE	ESE	ESE	ESE	ESE	ESE	ESE	ESE	ESE	ESE	ESE	ESE	ESE	ESE	ESE	ESE	ESE	ESE	
51/52	7	5	6	5	5	6	8	7	7	8	8	7	7	7	8	8	8	8	8	8	8	8	9	9	8	7	6	6	6	6	6	6	6	6	6	6	6	6	6	7
	13	11	12	11	11	10	11	13	12	13	13	13	12	12	12	11	11	11	11	11	11	11	10	10	9	8	7	7	7	7	7	7	7	7	7	7	7	7	8	
	E	E	E	E	ESE	E	ESE	E	ESE	ESE	ESE	ESE	ESE	E	ESE	ESE	ESE	ESE	ESE	ESE	ESE	ESE	ESE	ESE	ESE	ESE	ESE	ESE	ESE	ESE	ESE	ESE	ESE	ESE	ESE	ESE	ESE	ESE	ESE	
37/38	7	5	7	6	6	5	6	7	6	7	8	7	7	7	9	8	8	8	8	8	8	8	9	9	8	7	6	6	6	6	6	6	6	6	6	6	6	6	7	
	12	12	13	12	12	10	12	12	12	12	13	12	12	12	11	11	11	11	11	11	11	11	10	10	9	8	7	7	7	7	7	7	7	7	7	7	7	7	8	
	E	E	ESE	ESE	ESE	E	ESE	ESE	ESE	ESE	ESE	ESE	ESE	E	ESE	ESE	ESE	ESE	ESE	ESE	ESE	ESE	ESE	ESE	ESE	ESE	ESE	ESE	ESE	ESE	ESE	ESE	ESE	ESE	ESE	ESE	ESE	ESE	ESE	
25/26	6	6	8	7	6	5	6	6	6	7	7	7	6	7	7	9	8	8	8	8	8	8	8	7	7	6	5	6	6	6	6	6	6	6	6	6	6	6	6	
	12	14	14	13	13	11	12	12	12	12	13	12	11	12	10	11	11	10	10	10	10	9	9	8	7	7	7	7	7	7	7	7	7	7	7	7	7	7	7	
	E	ESE	ESE	ESE	ESE	ESE	ESE	ESE	E	E	ESE	ESE	ESE	E	E	ESE	ESE	ESE	ESE	ESE	ESE	ESE	ESE	ESE	ESE	ESE	ESE	ESE	ESE	ESE	ESE	ESE	ESE	ESE	ESE	ESE	ESE	ESE	ESE	
11/12	6	10	10	8	8	6	7	7	7	8	8	7	6	7	7	9	8	8	8	8	8	8	8	7	7	6	6	6	6	6	6	6	6	6	6	6	6	6	6	
	14	17	16	14	14	12	12	13	13	13	13	13	12	12	11	11	11	10	10	10	10	9	9	8	8	7	6	6	6	6	6	6	6	6	6	6	6	6	6	
	E	ESE	ESE	ESE	ESE	ESE	ESE	ESE	ESE	ESE	ESE	ESE	ESE	E	E	E	E	E	E	E	E	E	E	E	E	E	E	E	E	E	E	E	E	E	E	E	E	E	E	
1 & 2 Bravo	13	13	12	11	10	8	8	10	10	9	10	10	9	8	7	9	9	8	8	8	8	8	9	9	8	8	8	8	8	8	8	8	8	8	8	8	8	8	8	
	20	20	19	17	14	12	13	14	14	14	14	14	14	14	13	11	11	10	10	10	10	10	10	10	9	9	9	9	9	9	9	9	9	9	9	9	9	9	10	
	ESE	ESE	ESE	ESE	ESE	ESE	ESE	ESE	ESE	ESE	ESE	ESE	ESE	ESE	E	E	E	E	E	E	E	E	E	E	E	E	E	E	E	E	E	E	E	E	E	E	E	E	E	

NOTE: This is automated data that may/may not agree with the official BAM thinking that's found on the daily slides or special visibility report slides. This data should be used as a guide only

Forecast Discussion

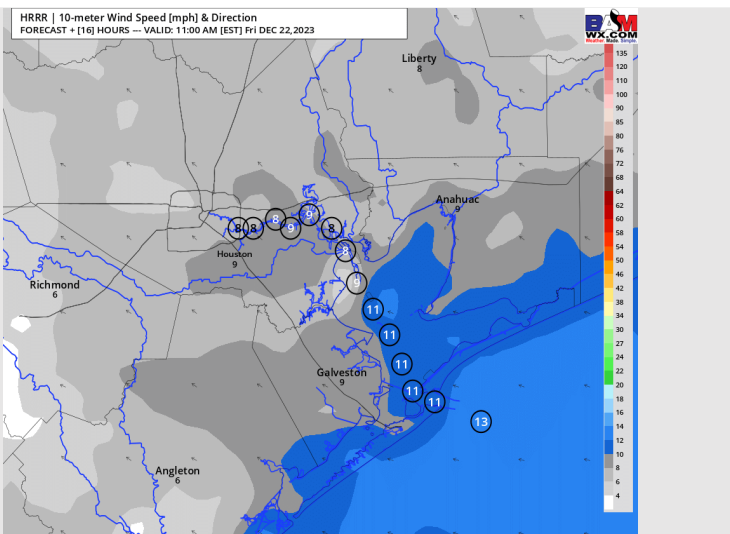
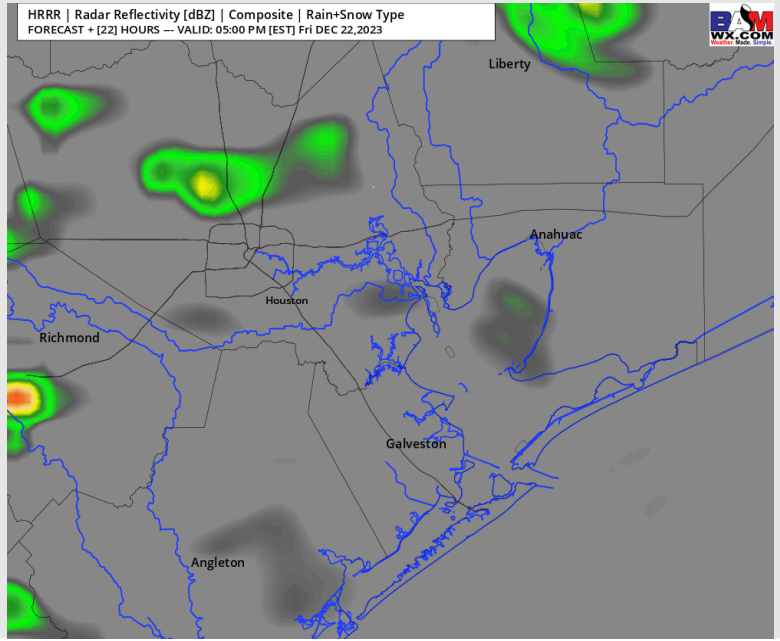
Precip: Spotty rain chances will be possible in the AM (10-20%). Better threats come after 2 – 3 PM for showers with a few moderate bursts (40%). In a scattered fashion, chances will linger through the evening.

Wind: Sustained winds will be out of the SE throughout the day. **N Morgan's Point:** 4 - 8 kts throughout much of the day Friday. **S of Morgan's Point:** Winds will generally be around 8 – 13 knots for much of the day. A few wind gusts of 14 – 17 knots will be possible in the afternoon hours.

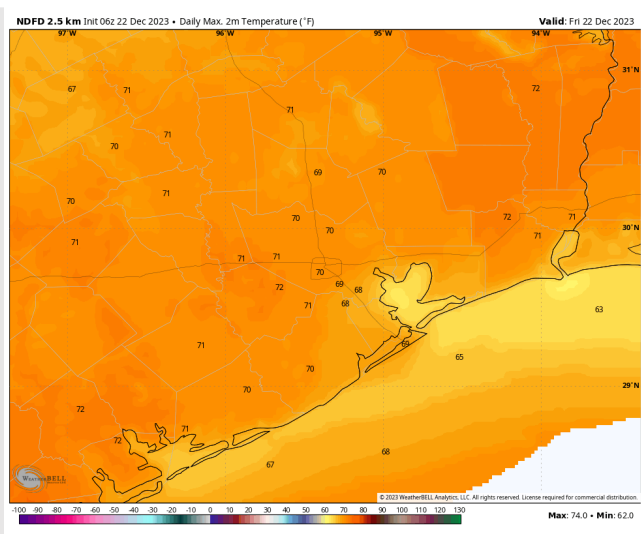
High Temps: **N of Morgan's Point:** High 60s to 70s **F S of Morgan's Point:** Mid 60s F

Visibility: More information about lower visibilities on the first slide of report today into SAT AM.

Precip Image: 4 PM CT



Wind Speed:
10 AM CT



High Temps
Today

Forecast Discussion

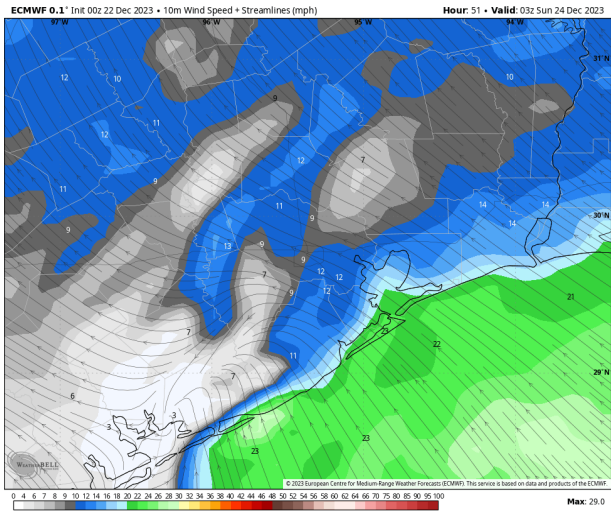
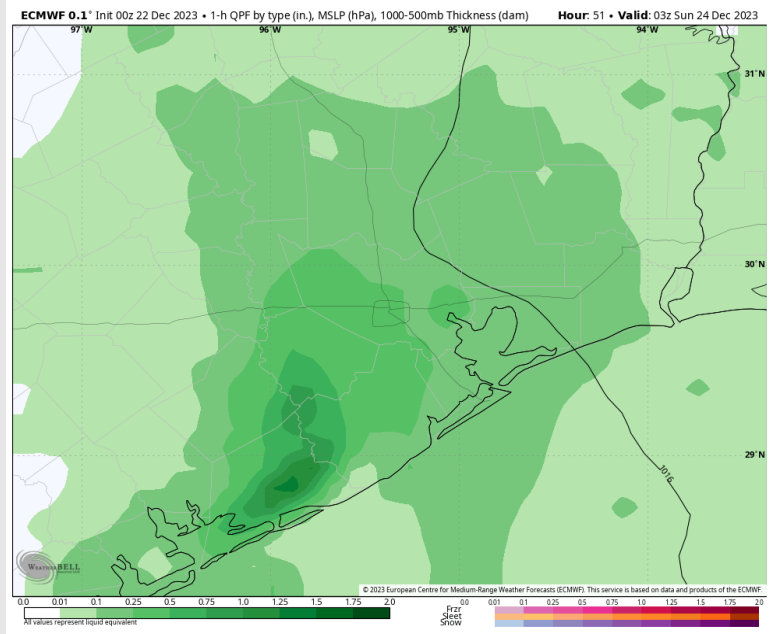
Precip: Scattered showers will continue to be possible in the AM. However, it is into the afternoon, especially after 5 PM where storms and heavier pockets of rain come into the picture. Once again, confidence is lower than desired on precise details

Wind: Winds will be out of the SE/ESE throughout the day. **N of Morgan's Point:** Winds will start out at 5 - 10 kts before increasing to 9 - 14 kts by after 8 PM. Stronger winds possible under storms. **S of Morgan's Point:** Winds will start out around 8 - 13 knots before sustained winds increase to around 13 - 17 knots after 5 PM. **Stronger wind gusts cannot be ruled out under storms. Winds gusts of 20 - 25 kts will be possible after 6PM for stations S of Morgan's Point.**

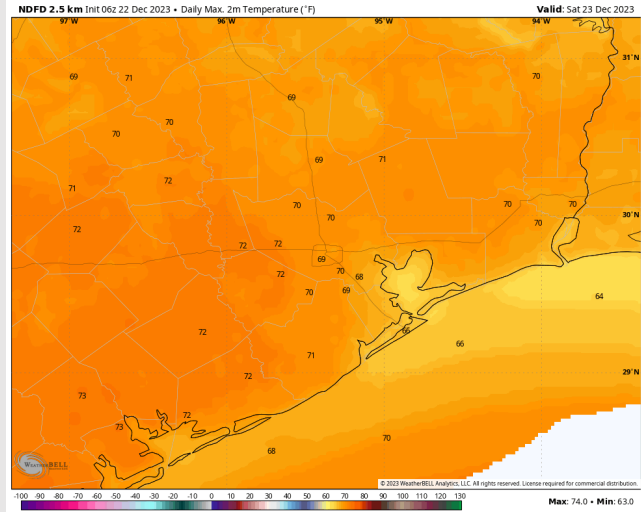
High Temps: **N of Morgan's Point:** Low 70's F. **S of Morgan's Point:** Mid 60's F.

Visibility: The set up for sea fog will continue into Saturday, especially in the AM (info on first slide) and heading into the evening. The large complicating/limiting factor to sea fog will be showers/storms around the area after 1 PM. However, where there are breaks in storm, instances of sea fog cannot be ruled out. Sea fog will continue to be possible through the day in a patchy fashion.

Precip Image: 9 PM CT



Wind Speed:
9 PM CT



High Temps
Saturday

Houston Pilots: Sun. 12/24/2023



Forecast Discussion

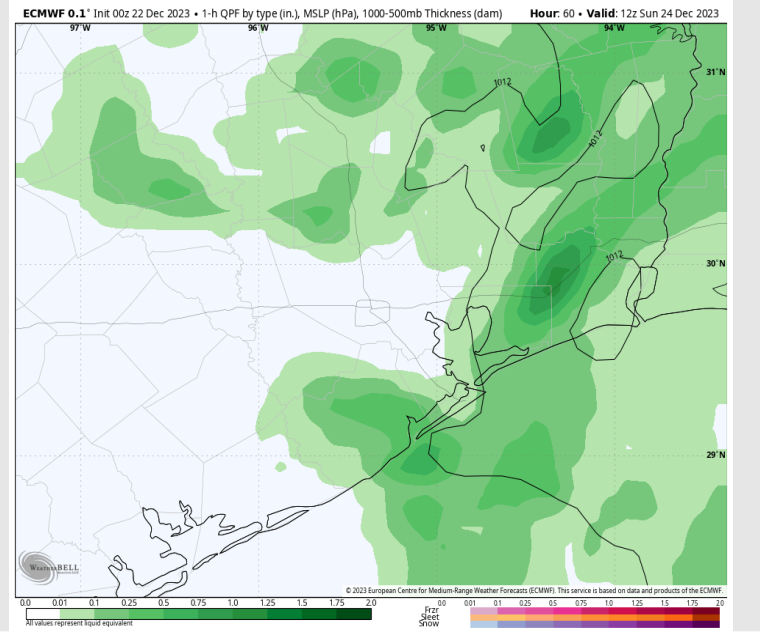
Precip: Widespread showers/storms continue into the early AM, with coverage becoming more scattered after 6 AM. Precip will completely taper off by 6 PM.

Wind: Winds will be variable throughout the day but will settle out of the NW by midnight MON. **N of Morgan's Point:** Winds at 9-14 kts will quickly calm to 3-8 kts by 5 AM and remain there for the rest of the day. **S of Morgan's Point:** of 13-17 kts will calm to 4-9 kts by 8 AM, remaining at that clip for the rest of the day. **Winds gusts of 20 – 25 kts will be possible before 6 AM for stations S of Morgan's Point.**

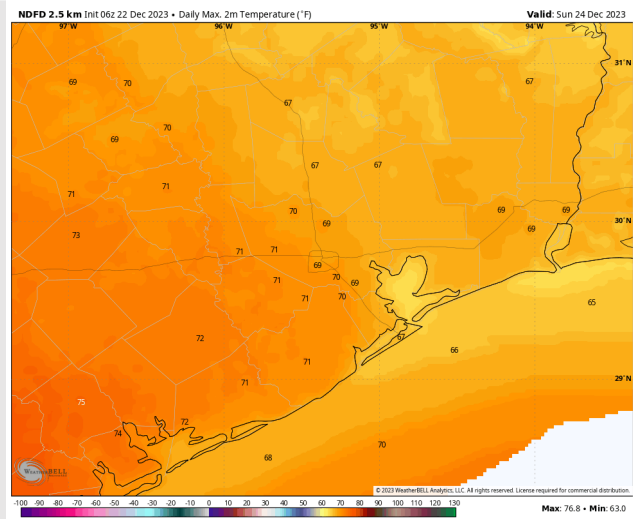
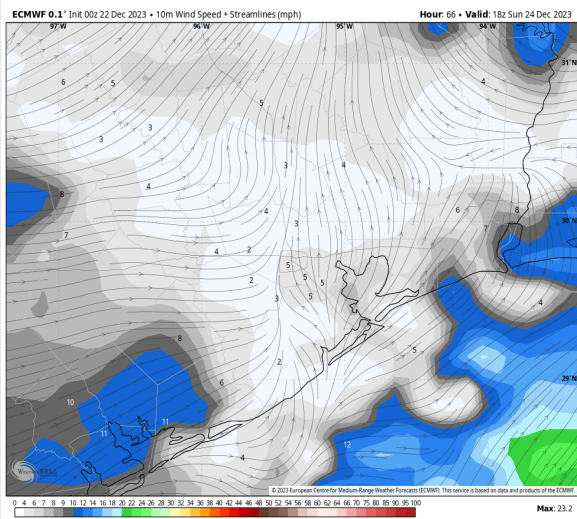
High Temps: **N of Morgan's Point:** Low 70's F. **S of Morgan's Point:** Mid 60's F.

Visibility: SUN AM holds the best potential for another round of sea fog however the complicating/limiting factor will continue to be scattered showers/storms. Where there are breaks in rain, patchy sea fog cannot be ruled out. Sea fog risk will likely wane for a time as precip tapers off, however additional sea fog will be in play MON AM (see extended range visibility report slide)

Precip Image: 6 AM CT

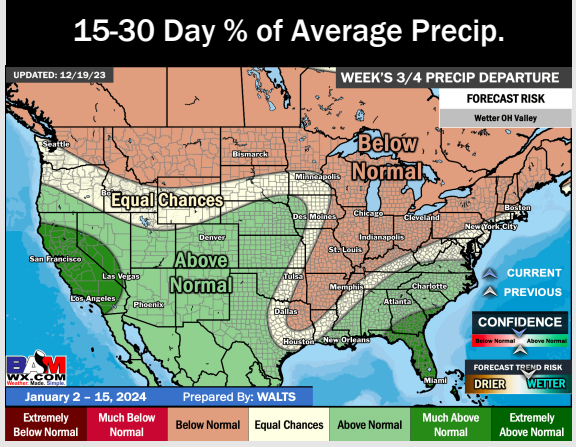
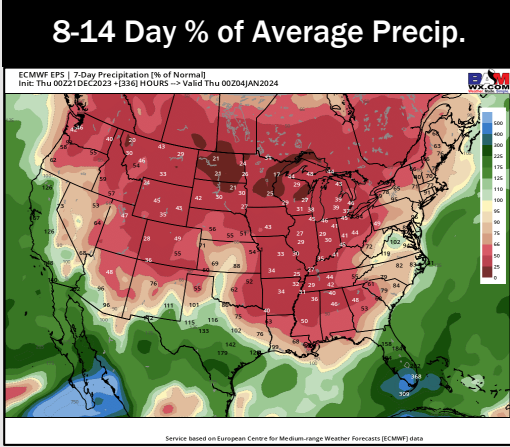
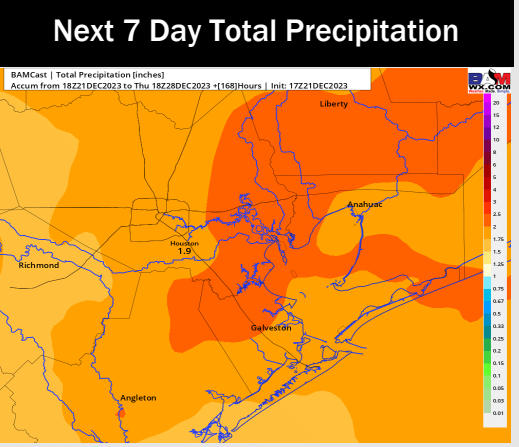
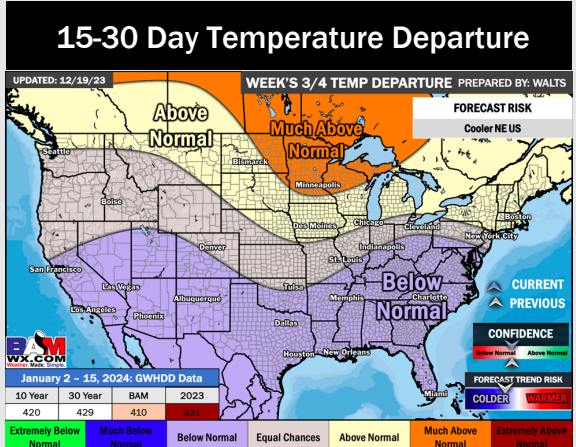
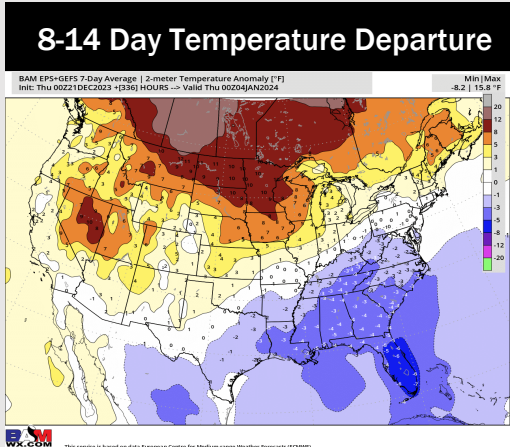
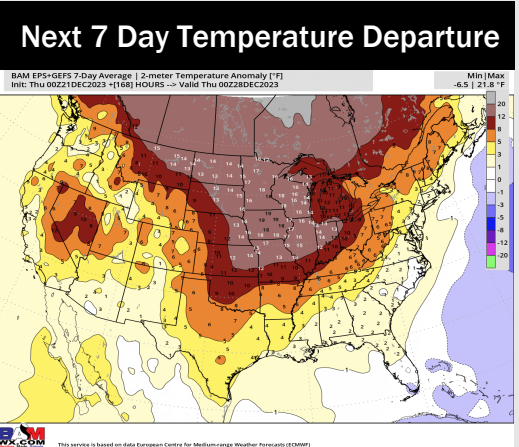


Wind Speed:
12 PM CT



High Temps
Sunday

Houston Pilots: 12/22/23



- SAT evening through SUN PM will offer up widespread, and at times heavy, rainfall opportunities. Above normal temperatures are expected until colder air fill behind a cold front after Monday.
- Cooler temperatures and above normal moisture chances are at play for the week 2 timeframe.
- Below normal temperatures and near normal chances for precipitation are favored in the weeks 3/4 timeframe. There is a risk this can trend wetter given an active subtropical jet.