

Houston Pilots Forecast Package



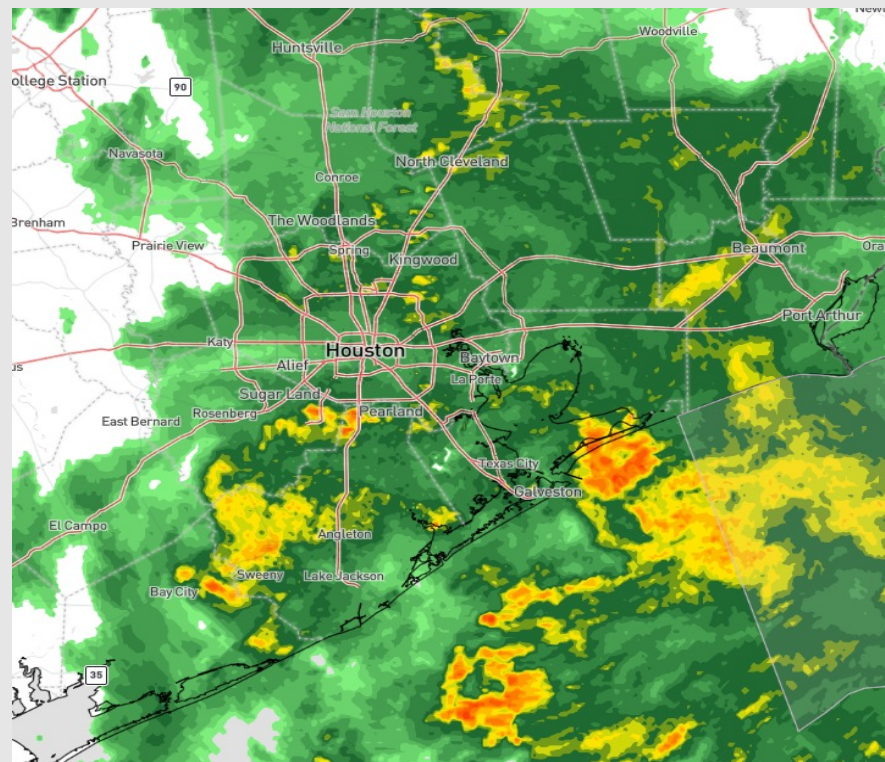
Updated: 12:20 AM CT

Saturday, December 23, 2023

Forecaster: Jonathan Kipper

Weather Headlines

- Check the slides above for information about fog through this afternoon.
- Winds do not look to be overly problematic the next few days aside from briefly stronger winds through this morning and a few gustier winds on MON.
- Rain chances are expected to continue through this evening, with a drier few days starting on Christmas Day.
- Fog threats look to end by Sunday evening as winds flip from the Northwest.



Radar/NWS Alerts: 12:15 AM CT



As always, please do not hesitate to reach out to us with any forecast questions via the chat option on the Weather Porthole or our on-call number, **(317)-560-8122** press 1 for forecast questions.

Houston Pilots Extended Range Visibility Report



Wednesday 12/27/23

NW/N winds will continue to limit fog potential throughout the day Wednesday.

Forecast Confidence



Friday 12/29/23

No visibility concerns for Friday at this time due to continue N/NW winds.

Forecast Confidence



Thursday 12/28/23

No visibility concerns for Thursday at this time.

Forecast Confidence



Chance for Fog

Wednesday AM	Unlikely
Wednesday PM	Unlikely
Thursday AM	Unlikely
Thursday PM	Unlikely
Friday AM	Unlikely
Friday PM	Unlikely

Houston Pilots Visibility Chart (miles)



Time	Sat 11pm	Sun 12am	Sun 1am	Sun 2am	Sun 3am	Sun 4am	Sun 5am	Sun 6am	Sun 7am	Sun 8am	Sun 9am	Sun 10am	Sun 11am	Sun 12pm	Sun 1pm	Sun 2pm	Sun 3pm	Sun 4pm	Sun 5pm	Sun 6pm	Sun 7pm	Sun 8pm	Sun 9pm	Sun 10pm	Sun 11pm	Mon 12am	Mon 1am	Mon 2am	Mon 3am	Mon 4am	Mon 5am	Mon 6am	Mon 7am	Mon 8am	Mon 9am	Mon 10am	
610 Bridge	5	4	4	3	4	6	4	4	3	3	5	6	8	10	10	10	10	10	10	10	10	10	7	6	6	5	7	10	10	10	10	10	10	10	10	10	10
Kinder 1	5	4	4	3	4	6	4	4	3	3	5	6	6	10	10	10	10	10	10	10	10	10	7	6	6	5	7	10	10	10	10	10	10	10	10	10	10
Greens Bayou	5	4	4	4	4	6	4	4	3	3	5	6	6	6	10	10	10	10	10	10	10	10	7	6	6	5	7	10	10	10	10	10	10	10	10	10	10
Shell Crude	5	4	4	4	4	5	4	4	3	3	5	6	6	6	10	10	10	10	10	10	10	10	7	6	6	5	7	10	10	10	10	10	10	10	10	10	10
Lynchburg Ferries	4	4	4	4	4	5	4	4	3	3	5	6	6	6	8	10	10	10	10	10	10	9	7	6	6	5	7	10	10	10	10	10	10	10	10	10	10
Exxon 3	4	4	3	4	4	5	4	4	3	3	5	6	6	6	8	10	10	10	10	10	10	9	7	6	6	4	7	10	10	10	10	10	10	10	10	10	10
Morgans Point	5	4	3	4	4	5	4	4	3	3	5	6	6	6	7	10	10	10	10	10	10	9	7	6	5	3	7	8	10	10	10	10	10	10	10	10	10
75/76	5	4	3	4	4	5	4	4	3	3	5	6	6	6	7	9	10	10	10	10	10	9	7	6	5	3	7	8	9	10	10	10	10	10	10	10	10
63/64	5	5	3	4	4	5	4	4	3	3	4	6	6	3	7	8	10	10	10	10	10	9	6	6	4	3	7	8	8	10	10	10	10	10	10	10	10
51/52	5	5	3	4	4	5	4	4	3	2	4	6	6	5	6	6	9	10	10	10	10	8	6	6	4	3	7	8	8	9	10	10	10	10	10	10	10
37/38	5	5	3	4	4	4	4	4	3	2	4	6	6	5	5	6	8	9	10	10	10	7	6	5	4	1	5	8	8	8	10	10	10	10	10	10	10
25/26	5	5	3	3	4	4	4	5	3	2	4	6	6	6	6	6	7	9	10	10	10	7	6	5	4	0.87	5	8	8	8	10	10	10	9	10	10	10
11/12	5	5	3	3	4	3	4	5	3	2	3	6	6	6	6	6	7	9	10	10	10	7	6	5	4	0.48	3	8	8	8	10	10	10	9	10	10	10
1 & 2 Bravo	4	4	3	3	3	3	4	4	3	2	3	6	6	6	5	6	5	7	7	7	7	6	5	6	4	0.8	0.3	6	8	8	8	8	8	9	9	9	10

NOTE: This is automated data that may/may not agree with the official BAM thinking that's found on the daily slides or special visibility report slides. This data should be used as a guide only

Houston Pilots Wind Chart



Forecast Confidence



Example

Sustained wind 13 Knots
Gusts 18 Knots
Wind from the N

WS: 13
G:18
N

Time Knots	Sat 11pm	Sun 12am	Sun 1am	Sun 2am	Sun 3am	Sun 4am	Sun 5am	Sun 6am	Sun 7am	Sun 8am	Sun 9am	Sun 10am	Sun 11am	Sun 12pm	Sun 1pm	Sun 2pm	Sun 3pm	Sun 4pm	Sun 5pm	Sun 6pm	Sun 7pm	Sun 8pm	Sun 9pm	Sun 10pm	Sun 11pm	Mon 12am	Mon 1am	Mon 2am	Mon 3am	Mon 4am	Mon 5am	Mon 6am	Mon 7am	Mon 8am	Mon 9am	Mon 10am
610 Bridge	7	8	8	8	10	11	11	10	10	10	7	6	3	4	5	5	5	5	4	4	3	3	4	4	4	6	8	9	11	11	11	11	11	10	10	10
	18	19	19	18	24	26	28	25	25	19	14	10	3	5	6	8	7	7	6	5	5	5	5	7	7	9	12	13	16	17	17	18	17	16	15	15
	SSE	SSE	ESE	SE	SE	SE	ESE	ESE	ESE	ESE	ESE	E	ESE	ESE	E	SW	SSW	SSW	WSW	S	SW	SW	WSW	W	W	W	WNW	WNW	NW	NW	NW	NNW	NNW	NNW	NNW	
Kinder 1	7	8	9	8	11	11	11	11	10	10	6	7	3	4	5	5	5	4	4	3	3	3	3	4	4	6	8	8	10	11	11	11	10	10	10	10
	18	20	21	20	25	27	28	26	25	19	15	11	4	4	7	7	7	7	6	5	5	5	5	6	7	9	12	13	16	17	17	16	16	15	15	15
	SE	SSE	SE	SE	SE	SE	ESE	ESE	ESE	ESE	ESE	E	ESE	ESE	E	SSW	SSW	SSW	SW	S	SW	SW	WSW	W	W	W	WNW	WNW	NW	NW	NW	NNW	NNW	NNW	NNW	
Greens Bayou	8	8	10	10	12	12	12	12	12	10	7	8	4	3	5	4	5	4	4	3	3	3	3	4	4	5	7	8	10	11	11	11	10	9	10	10
	19	21	24	26	28	29	29	26	27	18	17	13	5	4	7	7	7	7	6	5	5	5	5	6	7	8	11	12	15	16	17	16	15	15	15	15
	SE	SSE	SE	SE	SE	SE	ESE	ESE	ESE	ESE	ESE	E	ESE	ESE	E	S	SSW	S	S	S	SSW	SSW	WSW	W	W	W	WNW	WNW	NW	NW	NW	NNW	NNW	NNW	NNW	NNW
Shell Crude	8	8	11	12	13	12	12	12	11	8	8	8	4	2	6	4	5	4	4	3	3	3	3	4	4	5	7	8	10	11	11	11	10	10	10	11
	20	21	26	27	29	29	29	25	26	14	19	13	5	3	8	7	7	7	6	5	4	5	5	6	6	8	11	12	15	16	16	16	15	15	15	15
	SE	SSE	SE	SE	SE	SE	ESE	ESE	E	ESE	ESE	E	E	ESE	E	S	S	S	SSW	S	SSW	SSW	WSW	W	W	W	WNW	WNW	NW	NW	NW	NNW	NNW	NNW	NNW	
Lynchburg Ferries	9	10	12	14	14	12	12	11	11	6	9	8	5	3	6	5	5	5	4	4	3	3	3	4	4	5	5	7	8	10	11	11	10	10	11	11
	21	23	27	30	30	29	29	24	26	11	21	14	6	3	8	7	7	7	6	5	4	5	5	6	6	8	11	12	15	16	16	15	14	15	15	15
	SE	SE	SE	SE	SE	SE	ESE	ESE	E	SE	ESE	E	E	E	E	SSE	S	SSE	SSE	SSW	SSW	WSW	W	W	W	WNW	WNW	NW	NW	NW	NNW	NNW	NNW	NNW	NNW	
Exxon 3	10	11	12	13	13	13	12	12	12	5	10	7	5	3	6	5	5	5	5	4	3	4	4	4	5	6	7	9	10	11	11	11	10	11	11	11
	22	26	26	26	29	29	30	24	27	13	21	11	7	3	9	7	8	7	7	5	5	5	5	6	7	8	10	12	14	16	16	15	15	15	15	15
	SE	SE	SE	SE	SE	ESE	ESE	ESE	E	SSE	ESE	E	E	E	E	SSE	S	SSE	SSE	SSE	SSW	SSW	SW	WSW	W	W	WNW	WNW	NW	NW	NW	NNW	NNW	NNW	NNW	
Morgans Point	10	12	11	11	13	13	15	13	16	10	9	7	6	4	6	5	6	5	5	5	4	4	4	5	6	6	8	10	11	12	13	13	13	12	12	12
	23	28	24	26	28	27	30	25	28	19	18	10	8	5	9	8	8	7	7	6	5	5	5	6	7	8	10	12	15	16	17	16	15	16	15	15
	SE	SE	ESE	SE	SE	ESE	SE	ESE	E	SSE	E	ENE	ENE	ENE	E	SE	SSE	SSE	SE	SE	S	SSW	SW	WSW	W	W	WNW	WNW	NW	NW	NW	NNW	NNW	NNW	NNW	
75/76	11	13	10	12	14	15	15	16	9	10	8	8	7	7	6	7	6	7	7	6	6	5	6	7	7	9	12	13	15	16	16	16	15	15	15	15
	23	28	22	27	26	27	28	24	23	18	18	12	10	8	9	9	9	9	8	7	7	6	6	7	8	8	10	13	16	17	19	18	18	17	17	17
	SE	SE	ESE	SE	SE	ESE	SE	E	E	ESE	ENE	ENE	NE	ENE	ESE	SE	SE	SE	SSE	S	SSW	SW	WSW	W	W	W	WNW	NW	NW	NW	NNW	NNW	NNW	NNW	NNW	
63/64	11	15	10	16	13	16	16	14	11	5	12	10	9	7	8	6	6	7	7	7	6	5	5	6	7	8	9	12	14	16	18	18	17	17	17	16
	23	28	22	28	23	27	27	21	18	16	17	13	10	8	9	9	9	9	8	7	6	6	7	7	8	8	10	13	16	18	19	19	20	19	19	17
	SE	ESE	SE	SE	SE	ESE	SE	E	ENE	E	ENE	ENE	E	ESE	SE	SE	SE	SSE	SSE	S	SSW	SW	WSW	WSW	W	W	WNW	NW	NW	NW	NNW	NNW	NNW	NNW	NNW	
51/52	12	15	14	17	12	17	16	15	9	9	12	9	7	6	8	6	6	7	7	6	5	5	5	6	7	9	11	13	15	17	18	18	17	17	16	16
	23	25	25	28	22	24	23	23	19	20	16	11	8	6	9	8	8	8	7	7	7	6	5	6	7	8	10	12	15	17	19	19	20	19	19	18
	SE	ESE	ESE	SE	SE	ESE	ESE	E	E	ESE	ENE	E	NE	ENE	ESE	SE	SE	SE	SSE	SSE	S	SSW	SW	WSW	WSW	W	W	WNW	NW	NW	NNW	NNW	NNW	NNW	NNW	
37/38	13	12	15	17	13	15	12	15	10	13	13	8	5	6	7	7	6	7	6	6	6	5	4	5	6	7	8	10	12	15	16	17	18	18	17	16
	21	24	26	28	22	22	19	24	21	22	18	11	6	7	7	8	7	8	7	7	6	5	5	6	7	9	11	14	16	18	19	20	19	19	18	
	SSE	ESE	ESE	SE	ESE	E	E	E	ESE	ESE	ESE	SE	ENE	E	E	SE	SE	SE	SSE	SW	SSW	SW	WSW	W	W	W	WNW	NW	NW	NW	NNW	NNW	NNW	NNW	NNW	
25/26	12	13	16	16	12	12	11	15	12	13	11	8	4	7	6	7	6	5	5	5	4	4	5	5	6	7	8	10	13	16	17	18	16	16	15	15
	20	25	27	28	21	22	20	25	23	19	16	12	5	8	6	8	7	7	6	6	6	5	5	6	6	7	8	10	13	16	17	18	18	19	18	18
	SE	ESE	ESE	SE	ESE	E	E	ESE	SE	ESE	ESE	SE	SSE	E	SSE	SE	SE	SSE	S	WSW	SW	WSW	WSW	W	W	W	WNW	NW	NW	NNW	NNW	NNW	NNW	NNW		
11/12	13	16	18	18	13	13	14	17	16	9	8	7	5	5	7	7	6	5	5	5	5	5	5	6	6	8	9	11	13	14	15	16	16	16	15	15
	20	26	28	27	21	23	23	26	24	14	14	13	9	8	5	8	8	7	6	6	6	6	5	6	7	9	10	13	16	17	18	18	19	18	18	18
	SE	ESE	SE	SE	ESE	E	E	ESE	SE	SSE	ESE	SE	SSE	SE	ENE	SE	SE	SE	SSE	S	SW	SW	WSW	WSW	W	W	W	WNW	NW	NW	NNW	NNW	NNW	NNW	NNW	
1 & 2 Bravo	16	19	21	20	16	17	20	21	19	19	10	15	8	7	5	8	7	7	7	7	7	7	7	7	7	8	9	11	14	16	18	19	20	20	20	19
	24	29	30	28	23	29	29	29	27	26	15	19	10	9	6	9	9	8	7	7	7	7	7	7	8	9	11	12	15	18	20	21	21	22	22	20
	SE	ESE	SE	SE	ESE	ESE	ESE	ESE	ESE	SSE	ESE	SE	SE	SE	SE	SSE	SE	SSE	SSE	S	SSW	SW	WSW	WSW	W	W	W	WNW	WNW	NW	NW	NW	NNW	NNW	NNW	NNW

NOTE: This is automated data that may/may not agree with the official BAM thinking that's found on the daily slides or special visibility report slides. This data should be used as a guide only

Houston Pilots: Sun. 12/24/2023

Forecast Discussion

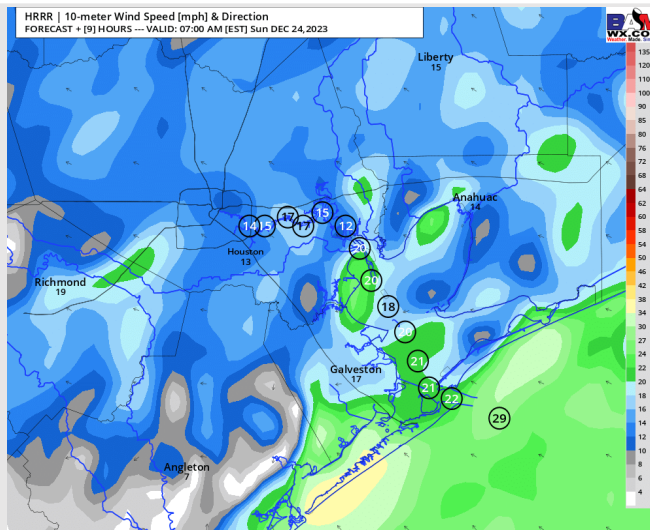
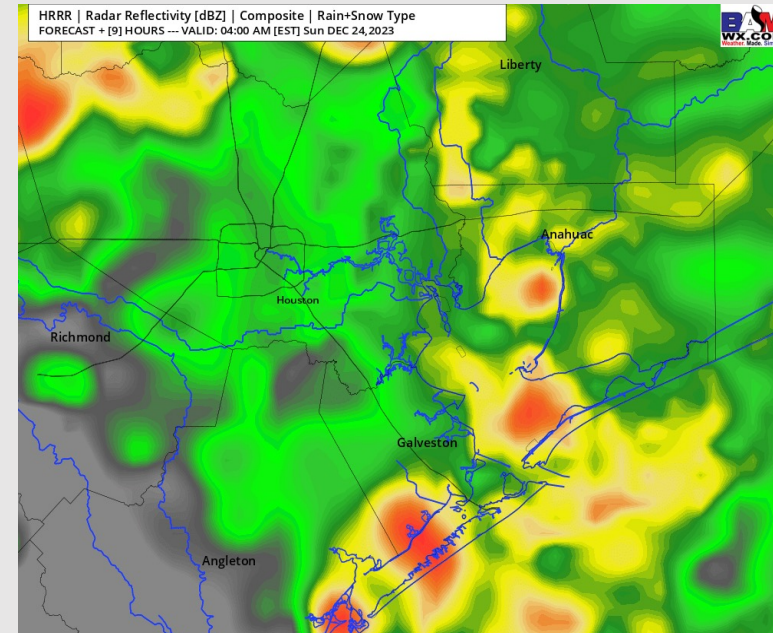
Precip: Consistent coverage will continue between now and 4 AM. After 4 AM, chances will become a tad more scattered at 60-70%, as there will be short periods of dry time mixed in. This will last through 3 PM when coverage will taper off through 8 PM gradually. After 8 PM, favoring dry conditions.

Wind: S to SE winds anticipated in the AM hours, with winds becoming variable in direction towards 12 PM. **N of Morgan's Point:** 10-15 kts through 8 AM, then gradually decrease to 6-11 kts by 12 PM and 3-8 kts by 4 PM. **S of Morgan's Point:** Winds will remain at 14 - 19 kts in the AM hours. The Boarding Station and 11/12 can see slightly higher winds at 17 - 22 kts. Towards 8 AM, winds will gradually decrease, reaching 7-12 kts by 12 PM and 5-10 kts by 5 PM. **Wind gusts prior to 9 AM across all stations can reach 28 - 32 kts.**

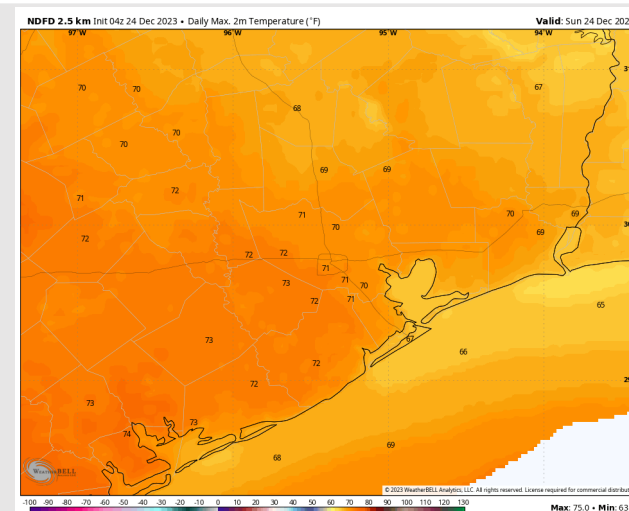
High Temps: **N of Morgan's Point:** Low 70's F. **S of Morgan's Point:** Mid 60s F

Visibility: Check the Sunday Visibility analysis slide for more details on sea fog progression

Precip Image: 3 AM CT



Wind Speed:
6 AM CT



High Temps
Today

Houston Pilots: Mon. 12/25/2023

Forecast Discussion

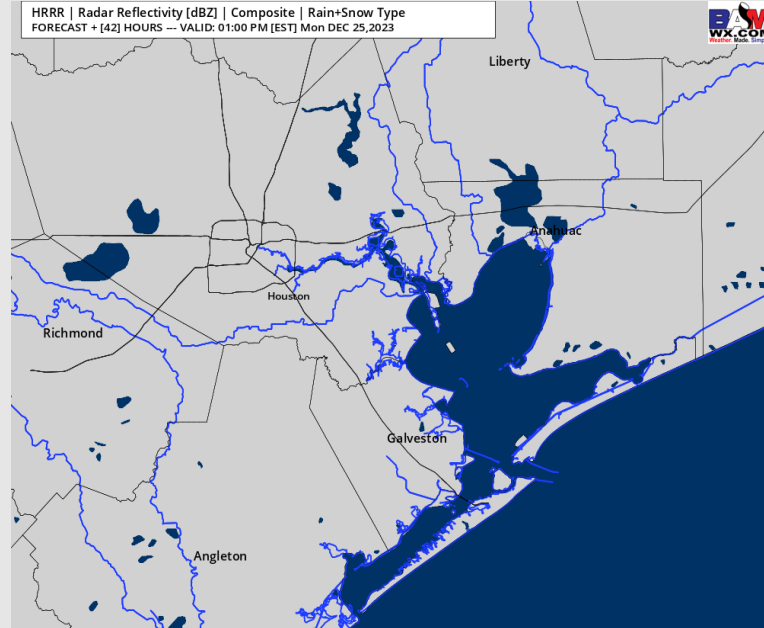
Precip: Favoring dry conditions for Christmas day.

Wind: WNW prior to sunrise, then NW winds thereafter. **N Morgan's Point:** Winds of 5-10 kts will increase 8-13 kts by 6 AM, before returning to 5-10 kts at 5 PM. **S of Morgan's Point:** Winds at 7 - 12 kts will increase to 13-18 kts by 5 AM. Winds revert to 7 - 12 kts by 5 PM. Boarding Station winds will remain slightly elevate at 12-16 kts after 5 PM. **Wind gusts of 22 -26 kts will be possible for the Boarding Station after 6 AM though 2 PM.**

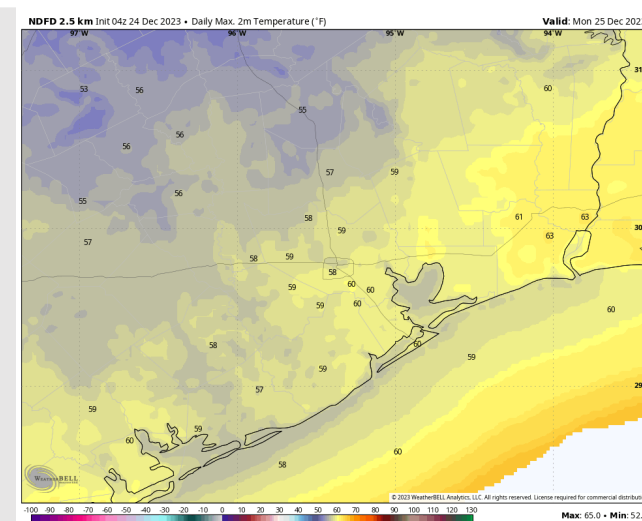
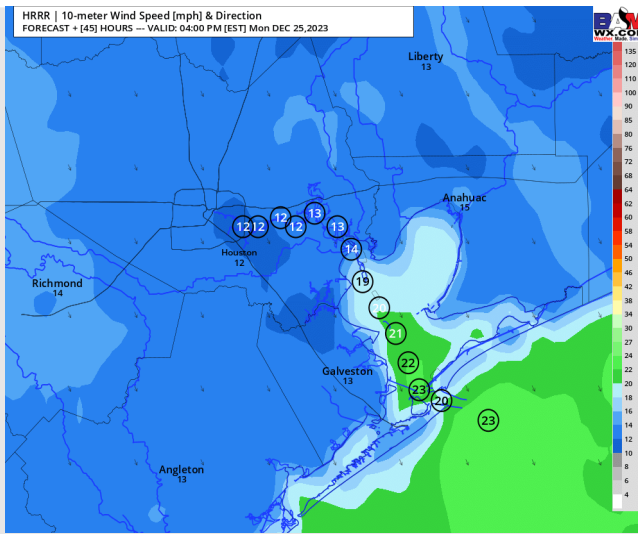
High Temps: Near 60 F across all stations.

Visibility: A low end risk of fog will be present early MON AM, however better coverage will remain to the East.

Precip Image: 12 PM CT



Wind Speed:
3 PM CT



High Temps
Monday

Houston Pilots: Tue. 12/26/2023

Forecast Discussion

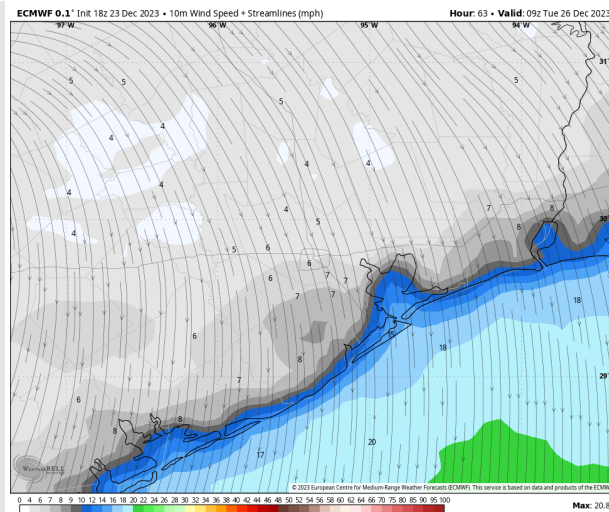
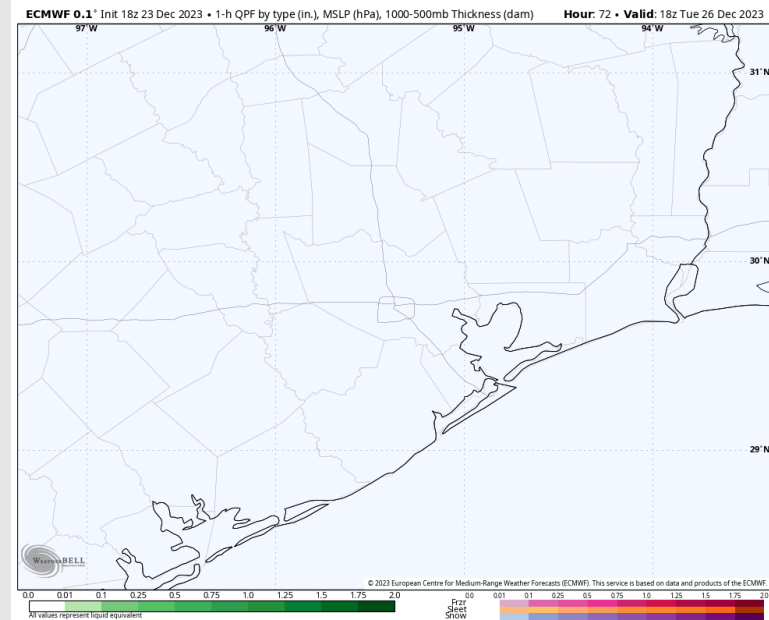
Precip: Favoring dry conditions for Tuesday.

Wind: Winds will start out of the NW and slowly veer the entire day. Direction will be out of the N by 6 AM, E by 12 PM, S by 5 PM, then remain out of the S/SW the rest of the day Tuesday. **N of Morgan's Point:** 4-8 kts the entire day. **S of Morgan's Point:** 8-13 kts through 8 AM, then decreasing 6-11 kts. Winds will decrease once again to 4-8 kts by 1 PM and remain there the rest of the PM Hours.

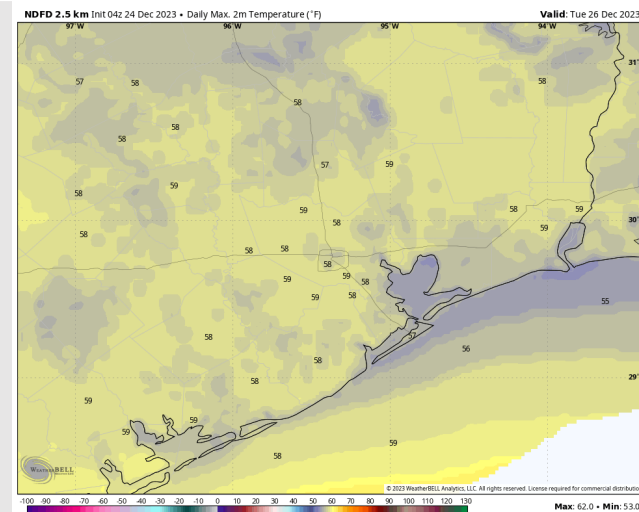
High temps: **N of Morgan's Point:** Nar 60 F. **S of Morgan's Point:** Mid to Upper 50s F.

Visibility: No visibility concerns are favored for Tuesday.

Precip Image: 12 PM CT



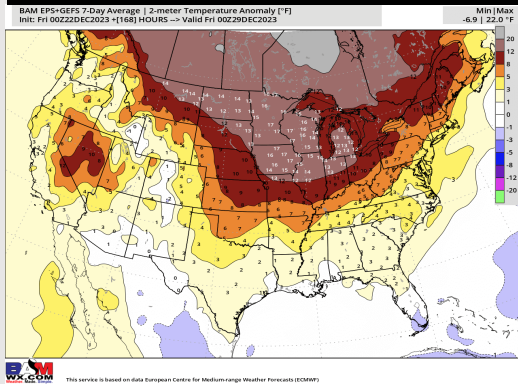
Wind Speed:
3 AM CT



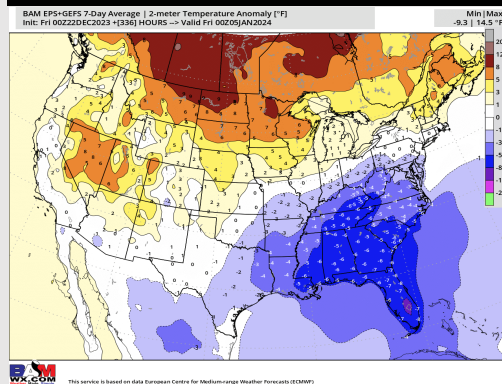
High Temps
Tuesday

Houston Pilots: 12/23/23

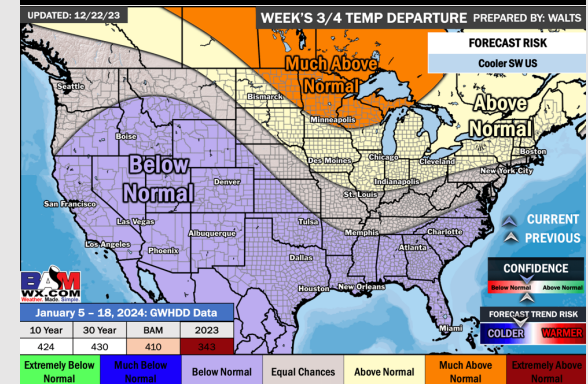
Next 7 Day Temperature Departure



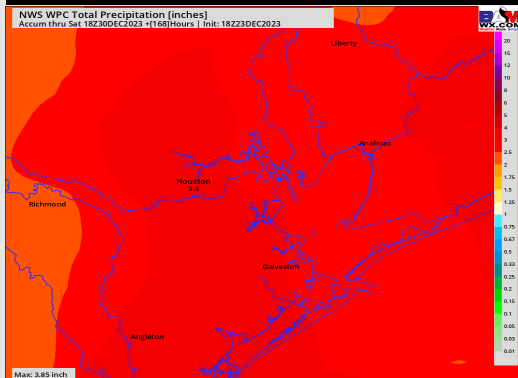
8-14 Day Temperature Departure



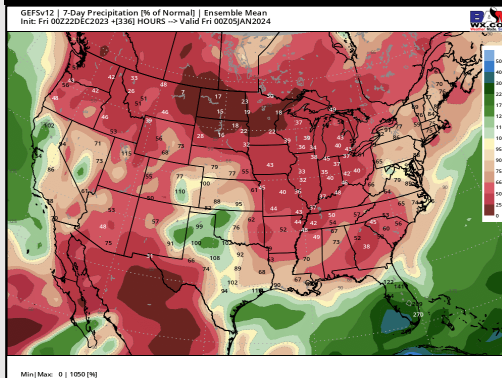
15-30 Day Temperature Departure



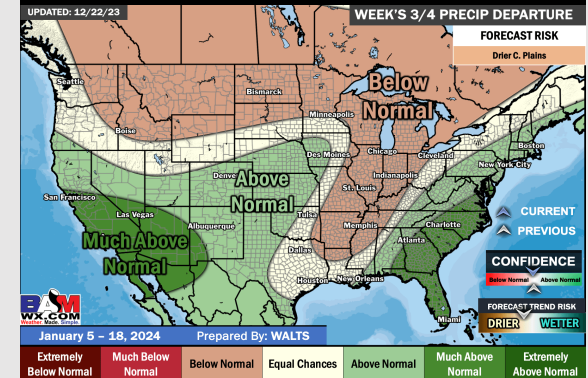
Next 7 Day Total Precipitation



8-14 Day % of Average Precip.



15-30 Day % of Average Precip.



- Today will offer up widespread, and at times heavy, rainfall opportunities. Outside of this weekend, the week ahead looks quite inactive. Above normal temperatures are expected until colder air fill behind a cold front after Monday.
- Cooler temperatures and near normal rain chances are at play for the week 2 timeframe.
- Below normal temperatures and near normal chances for precipitation are favored in the weeks 3/4 timeframe. There is a risk this can trend wetter given an active subtropical jet.