

Houston Pilots Forecast Package



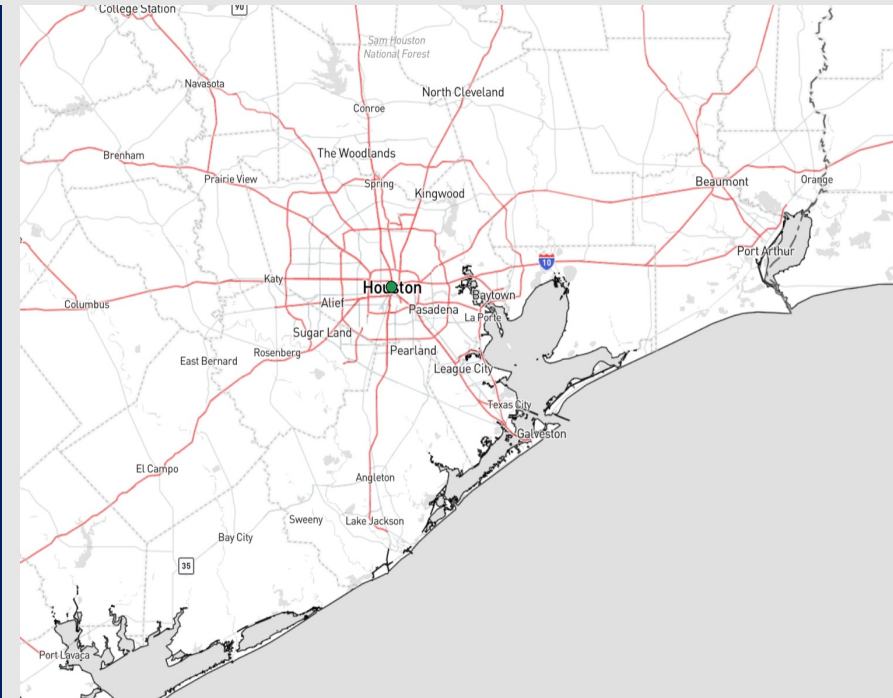
Updated: 1:50 PM CT

Monday, December 18, 2023

Forecaster: Will Danby

Weather Headlines

- Winds are expected to remain calm over the next couple days, seldom reaching over 15kts outside of the Boarding Station.
- Dry conditions are favored over the next few days, with next rain chances occurring late THU into FRI
- Not favoring any visibility issues over the coming days for fog (low end risk on WED).
- Next Best opportunity for Sea Fog arrives Friday PM into Saturday AM



Radar/NWS Alerts: 1:48 PM CT



As always, please do not hesitate to reach out to us with any forecast questions via the chat option on the Weather Porthole or our on-call number, **(317)-560-8122** press 1 for forecast questions.

Houston Pilots Extended Range Visibility Report



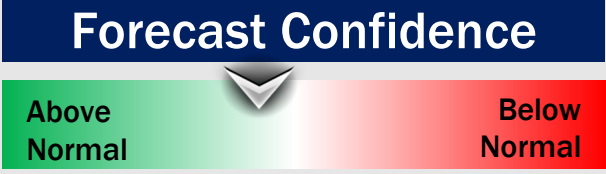
Thursday 12/21/23

Still needing to watch THU for a risk of sea fog, as a slightly higher risk than WED due to better low level moisture in the area.



Friday 12/22/23

Sea fog will be possible in the AM hours. Would need to watch into the early afternoon as southerly winds can draw up moisture into the bay



Saturday 12/23/23

As a front passes through the area FRI, patchy to widespread fog across the area will need to be monitored (exit time for rain will need to be watched for potential timeframe of fog on SAT).



Chance for Fog

Thursday AM	Low-end
Thursday PM	Unlikely
Friday AM	Low-end
Friday PM	Possible
Saturday AM	Likely
Saturday PM	Possible

Houston Pilots Visibility Chart (miles)



Forecast Confidence

Above Normal

Below Normal

Time	Mon 1pm	Mon 2pm	Mon 3pm	Mon 4pm	Mon 5pm	Mon 6pm	Mon 7pm	Mon 8pm	Mon 9pm	Mon 10pm	Mon 11pm	Tue 12am	Tue 1am	Tue 2am	Tue 3am	Tue 4am	Tue 5am	Tue 6am	Tue 7am	Tue 8am	Tue 9am	Tue 10am	Tue 11am	Tue 12pm	Tue 1pm	Tue 2pm	Tue 3pm	Tue 4pm	Tue 5pm	Tue 6pm	Tue 7pm	Tue 8pm	Tue 9pm	Tue 10pm	Tue 11pm	Wed 12am			
610 Bridge	10	10	10	10	10	10	10	10	10	10	10	10	10	10	10	10	10	10	10	10	10	10	10	10	10	10	10	10	10	10	10	10	10	10	10	10	10	10	10
Kinder 1	10	10	10	10	10	10	10	10	10	10	10	10	10	10	10	10	10	10	10	10	10	10	10	10	10	10	10	10	10	10	10	10	10	10	10	10	10	10	10
Greens Bayou	10	10	10	10	10	10	10	10	10	10	10	10	10	10	10	10	10	10	10	10	10	10	10	10	10	10	10	10	10	10	10	10	10	10	10	10	10	10	10
Shell Crude	10	10	10	10	10	10	10	10	10	10	10	10	10	10	10	10	10	10	10	10	10	10	10	10	10	10	10	10	10	10	10	10	10	10	10	10	10	10	10
Lynchburg Ferries	10	10	10	10	10	10	10	10	10	10	10	10	10	10	10	10	10	10	10	10	10	10	10	10	10	10	10	10	10	10	10	10	10	10	10	10	10	10	10
Exxon 3	10	10	10	10	10	10	10	10	10	10	10	10	10	10	10	10	10	10	10	10	10	10	10	10	10	10	10	10	10	10	10	10	10	10	10	10	10	10	10
Morgans Point	10	10	10	10	10	10	10	10	10	10	10	10	10	10	10	10	10	10	10	10	10	10	10	10	10	10	10	10	10	10	10	10	10	10	10	10	10	10	10
75/76	10	10	10	10	10	10	10	10	10	10	10	10	10	10	10	10	10	10	10	10	10	10	10	10	10	10	10	10	10	10	10	10	10	10	10	10	10	10	10
63/64	10	10	10	10	10	10	10	10	10	10	10	10	10	10	10	10	10	10	10	10	10	10	10	10	10	10	10	10	10	10	10	10	10	10	10	10	10	10	10
51/52	10	10	10	10	10	10	10	10	10	10	10	10	10	10	10	10	10	10	10	10	10	10	10	10	10	10	10	10	10	10	10	10	10	10	10	10	10	10	10
37/38	10	10	10	10	10	10	10	10	10	10	10	10	10	10	10	10	10	10	10	10	10	10	10	10	10	10	10	10	10	10	10	10	10	10	10	10	10	10	10
25/26	10	10	10	10	10	10	10	10	10	10	10	10	10	10	10	10	10	10	10	10	10	10	10	10	10	10	10	10	10	10	10	10	10	10	10	10	10	10	10
11/12	10	10	10	10	10	10	10	10	10	10	10	10	10	10	10	10	10	10	10	10	10	10	10	10	10	10	10	10	10	10	10	10	10	10	10	10	10	10	10
1 & 2 Bravo	10	10	10	10	10	10	10	10	10	10	10	10	10	10	10	10	10	10	10	10	10	10	10	10	10	10	10	10	10	10	10	10	10	10	10	10	10	10	10

NOTE: This is automated data that may/may not agree with the official BAM thinking that's found on the daily slides or special visibility report slides. This data should be used as a guide only

Houston Pilots Wind Chart



Forecast Confidence



Example

Sustained wind 13 Knots
Gusts 18 Knots
Wind from the N

WS: 13
G:18
N

Time Knots	Mon 1pm	Mon 2pm	Mon 3pm	Mon 4pm	Mon 5pm	Mon 6pm	Mon 7pm	Mon 8pm	Mon 9pm	Mon 10pm	Mon 11pm	Tue 12am	Tue 1am	Tue 2am	Tue 3am	Tue 4am	Tue 5am	Tue 6am	Tue 7am	Tue 8am	Tue 9am	Tue 10am	Tue 11am	Tue 12pm	Tue 1pm	Tue 2pm	Tue 3pm	Tue 4pm	Tue 5pm	Tue 6pm	Tue 7pm	Tue 8pm	Tue 9pm	Tue 10pm	Tue 11pm	Tue 12am	Wed	
610 Bridge	6 SE	7 SE	7 NE	6 NNE	6 NNE	4 N	4 NNE	3 NNE	3 NE	2 NNE	3 NE	3 NE	3 NE	3 NE	4 NE	4 ENE	5 ENE	5 ENE	6 E	8 E	8 E	8 E	8 ESE	8 ESE	7 ESE	8 ESE	8 ESE	7 ESE	7 ESE	6 ESE	6 ESE	6 ESE	6 ESE	5 ESE	5 ESE			
Kinder 1	6 ENE	7 NE	7 N	6 NNE	6 NNE	5 NE	4 NNE	3 NNE	3 NNE	3 NNE	3 NE	3 NE	3 NE	4 NE	4 ENE	5 ENE	6 ENE	8 ENE	8 ENE	8 ENE	8 ESE	8 ESE	7 ESE	8 ESE	8 ESE	7 ESE	8 ESE	7 ESE	6 ESE	6 ESE	6 ESE	6 ESE	5 ESE	5 ESE				
Greens Bayou	6 NE	7 N	7 NNE	6 SSE	6 SSE	5 SSE	4 NNE	3 NNE	3 NNE	3 NNE	3 NE	3 NE	3 NE	4 ENE	4 ENE	5 ENE	6 ENE	8 ENE	8 ENE	8 ENE	8 ESE	8 ESE	7 ESE	8 ESE	8 ESE	7 ESE	8 ESE	7 ESE	6 ESE	6 ESE	6 ESE	6 ESE	5 ESE	5 ESE				
Shell Crude	6 SE	7 NE	7 NNE	6 ENE	6 SW	5 W	5 W	4 NNE	3 NNE	3 NNE	3 NE	3 NE	3 NE	4 ENE	4 ENE	5 ENE	6 ENE	8 ENE	8 ENE	8 ENE	8 ESE	8 ESE	7 ESE	8 ESE	8 ESE	7 ESE	8 ESE	7 ESE	6 ESE	6 ESE	6 ESE	6 ESE	5 ESE	5 ESE				
Lynchburg Ferries	6 W	7 ENE	7 NNE	6 ESE	6 N	5 N	5 N	4 NNE	3 NNE	3 NNE	3 NNE	3 NE	3 NNE	3 NE	3 NE	4 ENE	5 ENE	6 ENE	8 ENE	8 ENE	8 ENE	8 ESE	8 ESE	7 ESE	8 ESE	8 ESE	7 ESE	8 ESE	7 ESE	6 ESE	6 ESE	6 ESE	6 ESE	5 ESE	5 ESE			
Exxon 3	6 N	7 WSW	7 SE	6 S	5 N	5 N	5 NNE	4 NNE	3 NNE	3 NNE	3 NNE	4 NE	3 NE	3 NE	4 NE	5 NE	6 NE	7 NE	8 NE	8 NE	8 NE	8 ESE	8 ESE	7 ESE	8 ESE	8 ESE	7 ESE	8 ESE	7 ESE	6 ESE	6 ESE	6 ESE	6 ESE	5 ESE	5 ESE			
Morgans Point	5 WNW	6 NNW	6 WSW	5 S	5 N	5 N	5 NNE	4 NNE	3 NNE	3 NNE	3 NNE	4 NE	3 NE	3 NE	4 NE	5 NE	6 NE	7 NE	8 NE	8 NE	8 NE	8 ESE	8 ESE	7 ESE	8 ESE	8 ESE	7 ESE	8 ESE	7 ESE	6 ESE	6 ESE	6 ESE	6 ESE	5 ESE	5 ESE			
75/76	4 WSW	6 WSW	6 W	6 W	7 N	7 NNE	7 NNE	6 NNE	5 NNE	5 NNE	5 NNE	6 NE	7 NE	8 NE	9 NE	9 NE	10 NE	12 NE	13 NE	13 NE	13 NE	13 NE	12 NE	10 NE	10 NE	10 NE	10 NE	11 NE	11 NE	11 NE	11 NE	11 NE	11 NE	10 NE	10 NE	10 NE	9 NE	
63/64	4 NW	6 WNW	6 NW	7 NNW	7 NW	8 WNW	8 N	8 NNE	8 NNE	6 NNE	6 NE	8 NE	10 NE	11 NE	11 NE	12 NE	13 NE	13 NE	13 NE	13 NE	14 NE	14 NE	14 NE	14 NE	14 NE	14 NE	14 NE	14 NE	14 NE	13 NE	13 NE	13 NE	13 NE	13 NE	12 NE	11 NE	10 NE	10 NE
51/52	4 NW	4 NNW	5 NNW	6 NNW	6 WSW	7 NNE	7 NNE	8 NNE	8 NNE	6 NNE	6 NE	9 NE	10 NE	11 NE	11 NE	12 NE	13 NE	13 NE	13 NE	13 NE	14 NE	14 NE	14 NE	14 NE	14 NE	14 NE	14 NE	14 NE	14 NE	13 NE	13 NE	13 NE	13 NE	12 NE	11 NE	10 NE	10 NE	9 NE
37/38	5 NNW	4 NNW	4 NNW	5 NNW	6 NNW	7 NNE	7 NNE	8 NNE	8 NNE	7 NNE	7 NE	10 NE	10 NE	10 NE	10 NE	11 NE	12 NE	13 NE	13 NE	13 NE	13 NE	14 NE	14 NE	14 NE	14 NE	14 NE	14 NE	14 NE	14 NE	13 NE	13 NE	13 NE	13 NE	12 NE	11 NE	10 NE	9 NE	9 NE
25/26	5 NNW	5 NNW	5 NNW	5 NNW	5 NNW	6 NNW	5 NNE	6 NNE	6 NNE	7 NNE	8 NNE	9 NNE	9 NNE	9 NNE	8 NNE	9 NNE	10 NNE	11 NNE	12 NNE	13 NNE	13 NNE	13 NNE	13 NNE	13 NNE	12 NNE	12 NNE	11 NNE	11 NNE	10 NNE	10 NNE	10 NNE	10 NNE	10 NNE	9 NNE	9 NNE	9 NNE	9 NNE	
11/12	4 NNW	5 NNW	5 NNW	5 NNW	5 NNW	5 W	5 NNE	6 NNE	6 NNE	8 NNE	8 NNE	9 NNE	10 NNE	10 NNE	8 NNE	9 NNE	10 NNE	11 NNE	12 NNE	13 NNE	13 NNE	13 NNE	13 NNE	13 NNE	12 NNE	12 NNE	11 NNE	11 NNE	10 NNE	10 NNE	10 NNE	10 NNE	10 NNE	10 NNE	10 NNE	10 NNE	10 NNE	
1 & 2 Bravo	6 NW	3 WNW	4 WNW	5 WNW	5 NW	6 ESE	8 NNE	9 NNE	11 NNE	11 NNE	10 NNE	12 NE	13 NE	13 NE	12 NE	13 NE	14 NE	15 NE	16 NE	16 NE	16 NE	16 NE	15 NE	14 NE	13 NE	13 NE	12 NE	13 NE	13 NE	13 NE	13 NE	13 NE	13 NE	13 NE	13 NE	13 NE	12 NE	12 NE

NOTE: This is automated data that may/may not agree with the official BAM thinking that's found on the daily slides or special visibility report slides. This data should be used as a guide only

Forecast Discussion

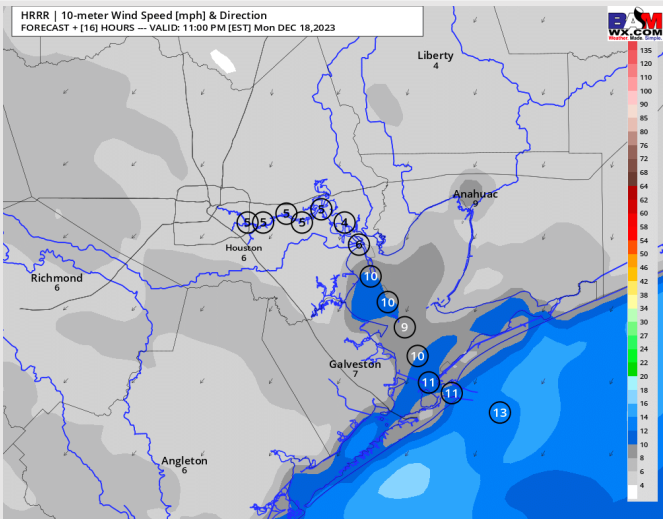
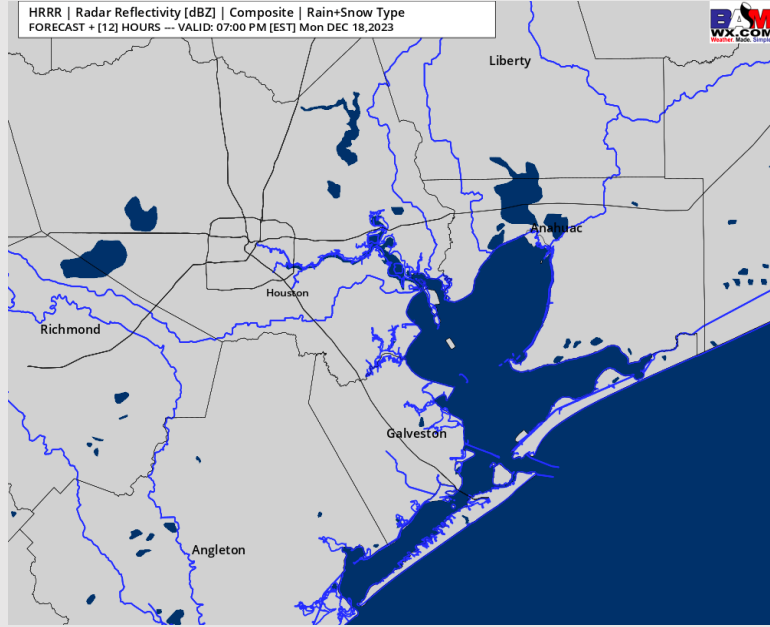
Precip: Dry conditions favored to continue this afternoon

Wind: Northerly winds will veer slightly from the NE by 12 AM. **N of Morgan's Point:** Sustained 3 - 8 kts. **S of Morgan's Point:** Light winds at 4 -9 kts will increase slightly to 7 -12 kts by 9 PM. Towards midnight winds increase at 11/12 and Boarding Station to 11 - 16 kts.

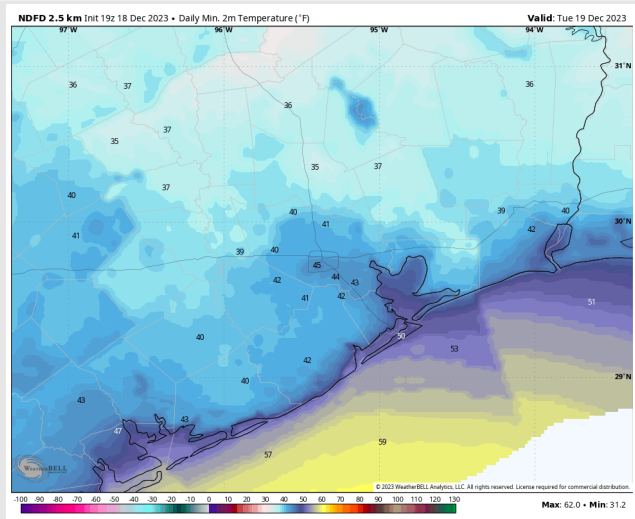
Low Temps: **N of Morgan's Point:** Mid 40s F. **S of Morgan's Point:** upper 40s to near 50 F. **Boarding Station:** Mid 50s F

Visibility: Not favoring any fog today.

Precip Image: 6 PM CT



Wind Speed:
10 PM CT



Low Temps
Tue AM

Houston Pilots: Tue. 12/19/2023



Forecast Discussion

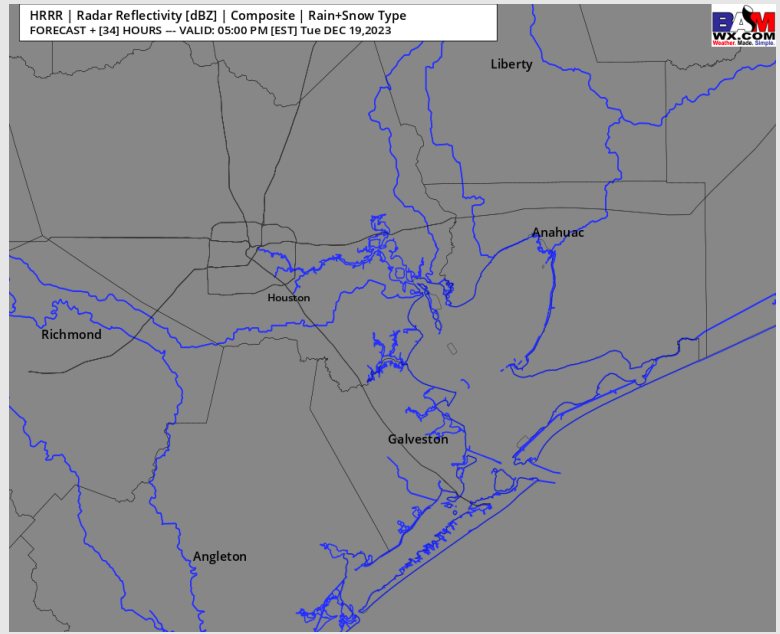
Precip: Dry conditions are favored for Tuesday.

Wind: Winds will slowly veer the entire day. Winds will start out of the NE in the early AM, becoming easterly by 10 AM and out of the ESE by 4-5 PM. **N Morgan's Point:** 3 - 8 kts prior to 9 AM. After 9 AM winds increase to 6 - 11 kts. By 6 PM winds revert to 3-8 kts. **S of Morgan's Point:** 7 -12 kt winds at 12 AM will increase to 10 -15 kts by 7 AM. By 2 PM winds return to 7 -12 kts. Boarding Station winds will remain sustained at 13 - 18 kts. After 3 PM winds calm a touch to 11 - 16 kts.

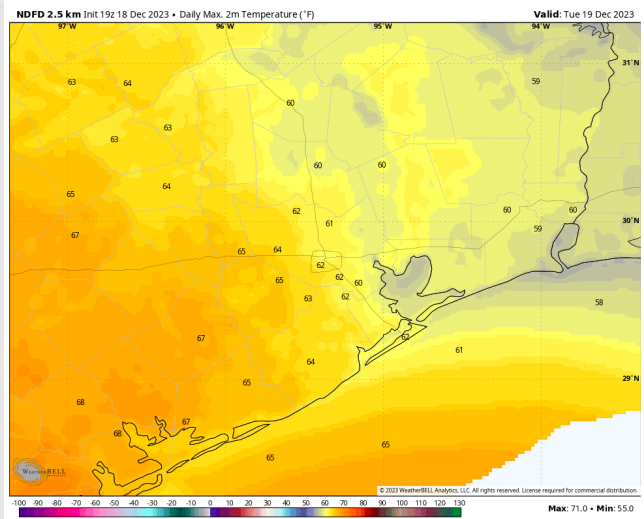
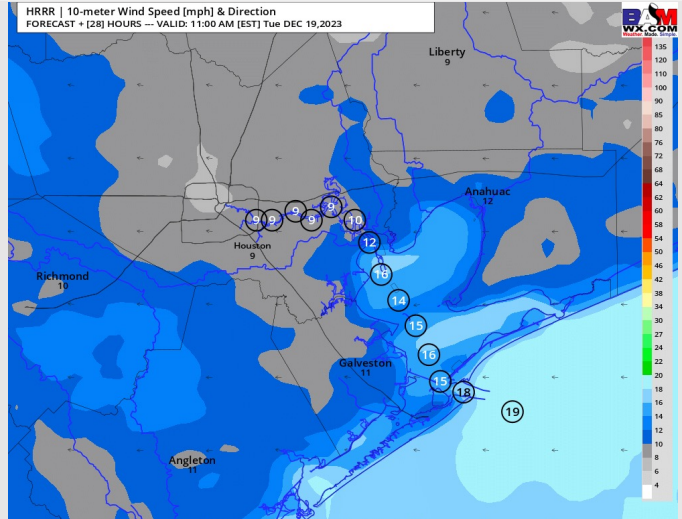
High Temps: **N of Morgan's Point:** Low 60s. **S of Morgan's Point:** Upper 50s F/Near 60 F.

Visibility: Not anticipating any visibility concerns

Precip Image: 4 PM CT



Wind Speed:
10 AM CT



High Temps
Tuesday

Forecast Discussion

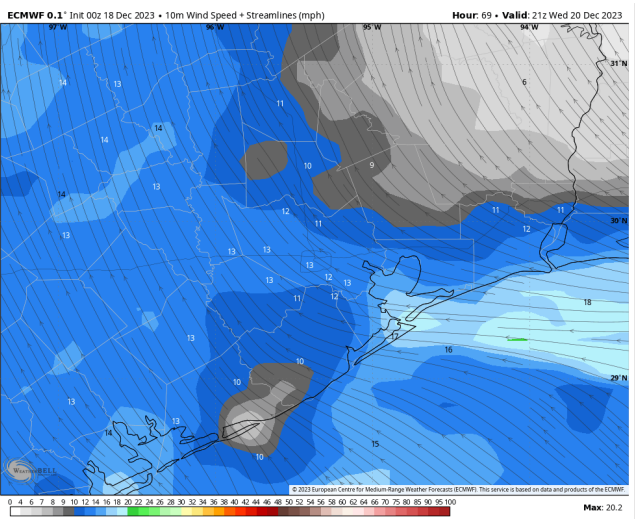
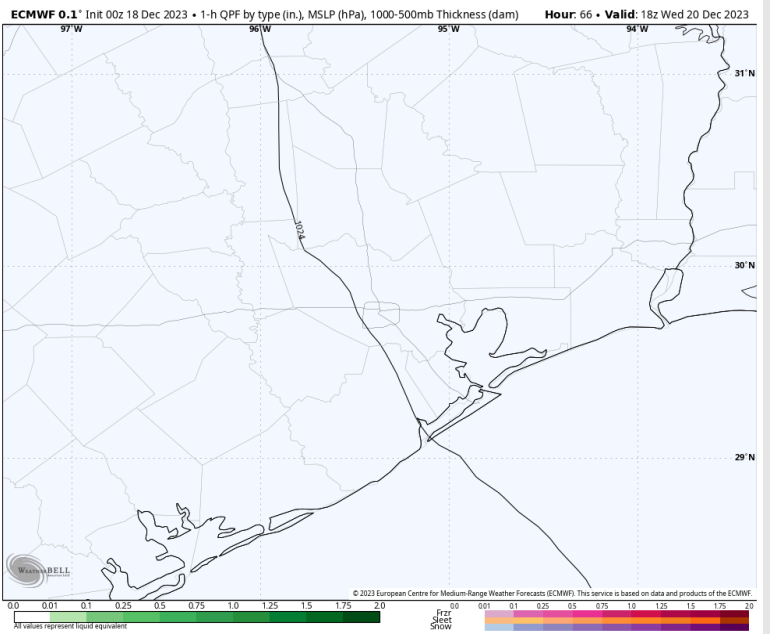
Precip: Dry conditions favored for Wednesday.

Wind: Winds will be out of the SE/ESE the entire day. **N of Morgan's Point:** Winds will be at 6-11 kts in the AM, increasing to 8 -13 kts in the afternoon. After sunset winds return to 6 - 11 kts. **S of Morgan's Point:** Winds will start off at 9-14 kts through 6 PM before increasing to 12-17 kts the rest of the evening.

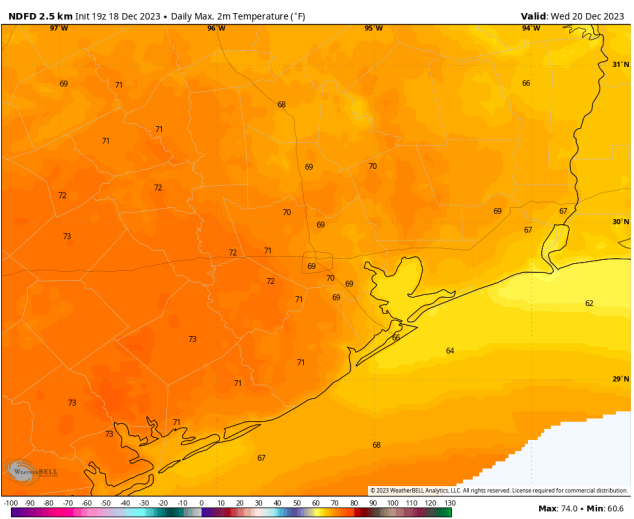
High Temps: **N of Morgan's Point:** Upper 60s to 70 F. **S of Morgan's Point:** Mid 60s F.

Visibility: A low end risk for sea fog will need to be monitored for WED AM, however lower confidence at this time.

Precip Image: 12 PM CT

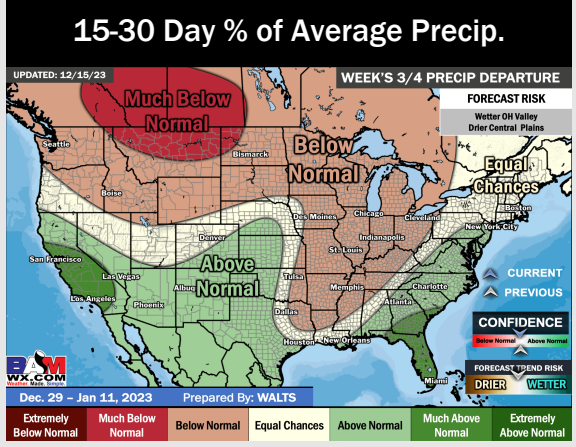
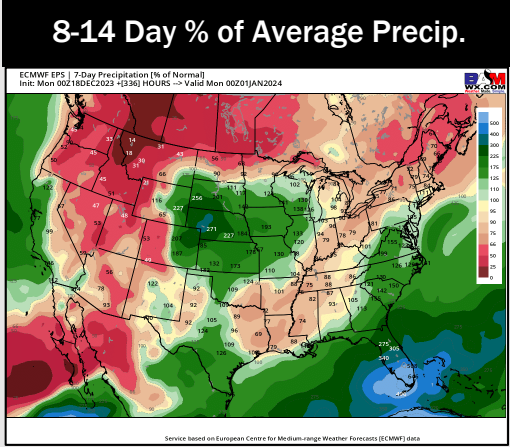
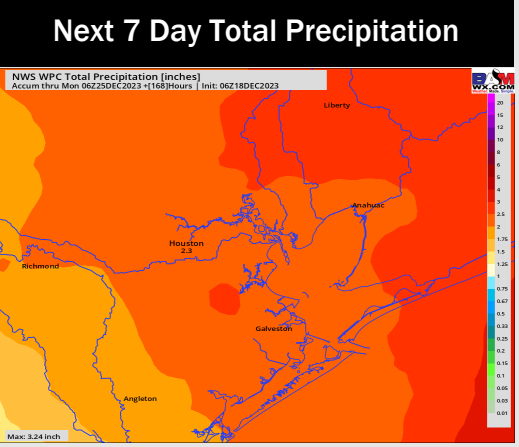
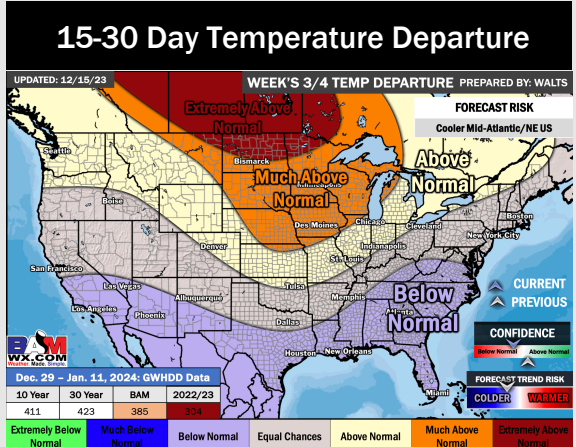
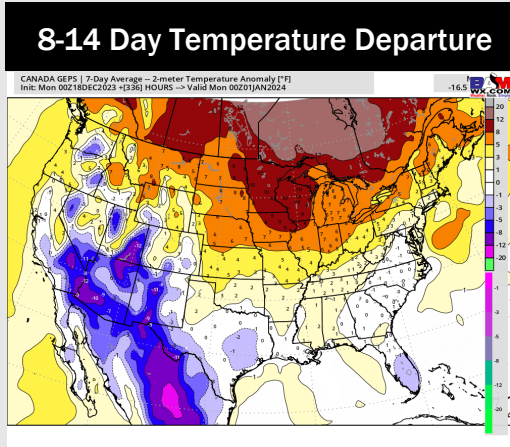
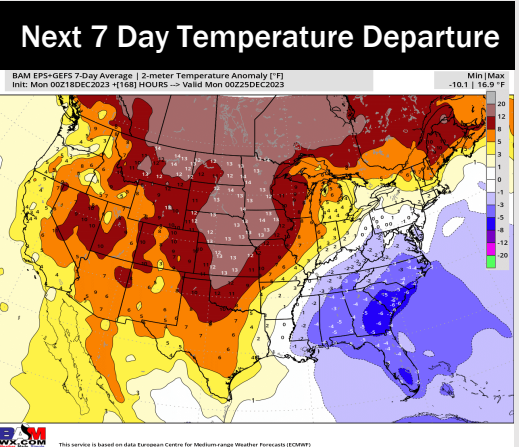


Wind Speed:
3 PM CT



High Temps
Wednesday

Houston Pilots: 12/18/23



- The next best shot for rain will occur THU/FRI and into the weekend, bringing periods of moderate/heavy rain. Seasonable/slightly above normal temps are favored this week.
- Seasonal precipitation chances and seasonal temperatures are expected into the week 2 timeframe.
- Below normal temperatures and slightly above normal chances for precipitation are favored in the weeks ¾ timeframe.